



UNIFORM CRIME REPORTING PROGRAM
UCR STATISTICAL DATA VERIFICATION FORM

As an agency administrator or designee for the _____, I have
(Name of Agency)
reviewed the UCR monthly statistics for **March 2010** which includes all UCR data submitted
year to date. Based upon my or my designee's review and validation of same, I find that:

All data contained in the report for my agency is accurate and complete and may be
released and made part of UCR publications for future distribution to the public and other
interested UCR data subscribers.

Data contained in the report is inaccurate or incomplete and may not be published or
released at this time. (If this choice is selected, please provide the reason in the space
provided below.)

Reason: _____

The corrected data will be supplied to the UCR Program by: _____.
(Date)

This document must be signed and mailed to the Uniform Crime Reporting Program, 333 W.
Nye Lane Ste 100, Carson City, Nevada 89706 or faxed to (775) 684-6268 by **Sep 17, 2010**.

Signature of Agency Administrator (or designee)

Name/Title of Agency Administrator (print or type)

Agency's Name/Location

Date



Monthly Report



**March
2010**



Disclaimer: The following information is preliminary and cannot be certified until it is published in the annual report, *Crime in Nevada*, which will be available after July 1, 2011.



**Jearld Hafen, Director
Department of Public Safety**

**Pat Conmay, Division Chief
Records and Identification Bureau**

**Nicole Davis, Administrative Assistant IV
Sherri Sharp, Administrative Assistant II**

**Prepared by:
Records and Identification Bureau
Uniform Crime Reporting
333 W. Nye Lane Ste 100
Carson City, Nevada 89706
(775) 684-6262**



Nevada UCR Definitions / Explanations

Uniform Crime Reporting Program

The UCR program is a nationwide, cooperative, statistical effort by over 17,000 cities, county and state law enforcement agencies that voluntarily report data on crimes brought to their attention. Law enforcement agencies active in the national program represent 95% of the total population of the United States. While the program's primary objective is to generate a reliable set of crime statistics for use in law enforcement administration, operation and management, its data has over the years become one of the country's leading social indicators.

In Nevada, 39 agencies are currently reporting UCR data to the statewide program representing nearly 99% of its population. Rather than submitting directly to the FBI, local agencies must submit crime data to the state UCR Repository, which compiles, analyzes and submits copies of the reports to the FBI. The Nevada UCR Program prides itself on its responsiveness to local contributing agencies that previously received limited feedback for their efforts. The Nevada program is also responsible for producing and distributing periodic reports of the information contained in its database. As its database has grown, the program's utility has become even more apparent.

Eight offenses serve as an index for gauging fluctuations in overall volumes and rates of crime. Known collectively as the " Crime Index, " these offenses include *the violent crimes of murder, rape, robbery and assault and the property crimes of burglary, larceny, motor vehicle theft and arson*. These offenses were selected as a grouped measuring device because they represent the most common crime problems. They are all serious crimes; either by their very nature or due to the volume and frequency with which they occur.

Index Crimes Definitions

Murder and Non-negligent Manslaughter

Murder and non negligent manslaughter, as defined in the Uniform Crime Reporting Program, is the willful (non-negligent) killing of a human being by another.

The classification of this offense, as for all other Crime Index offenses, is based solely on police investigation as opposed to the determination of a court, medical examiner, coroner, jury or other judicial entity. Not included in the count for this offense classification are deaths caused by negligence, suicide or accident, justifiable homicides and attempts to murder or assaults to murder. These are scored as aggravated assaults.

Nevada UCR Definitions / Explanations

Forcible Rape

Forcible rape, as defined in the program, is the carnal knowledge of a female forcibly and against her will. Assaults or attempts to commit rape by force or threat of force are also included; however, statutory rape (without force) and other sex offenses are excluded.

Robbery

Robbery is the taking or attempting to take anything of value from the care, custody or control of a person or persons by force or threat of force or violence and/or by putting the victim in fear.

Aggravated Assault

Aggravated assault is an unlawful attack by one person upon another for the purpose of inflicting severe or aggravated bodily injury. This type of assault is usually accompanied by the use of a weapon or by means likely to produce death or great bodily harm. Attempts are included since it is not necessary that an injury result when a gun, knife or other weapon is used which could and probably would result in serious personal injury if the crime were successfully completed

Burglary

The Uniform Crime Reporting Program defines burglary as the unlawful entry of a structure to commit a felony or theft. The use of force to gain entry is not required to classify an offense as burglary. Burglary in this program is categorized into three sub classifications: forcible entry, unlawful entry where no force is used and attempted forcible entry.

Larceny-Theft

Larceny-theft is the unlawful taking, carrying, leading, or riding away of property from the possession or constructive possession of another. It includes crimes such as shoplifting, pocket picking, purse-snatching, thefts from motor vehicles, thefts of motor vehicle parts and accessories, and bicycle thefts, etc., in which no use of force, violence, or fraud occurs. In the UCR Program, this crime category does not include embezzlement, "con" games, forgery, and worthless checks. Motor vehicle theft is also excluded from this category inasmuch as it is a separate Crime Index offense.

Motor Vehicle Theft

Defined as the theft or attempted theft of a motor vehicle, this offense category includes the stealing of automobiles, trucks, buses, motorcycles, motor scooters, snowmobiles, etc. The definition excludes the taking of a motor vehicle for temporary use by those persons having lawful access.

Nevada UCR Definitions / Explanations

Arson

Arson is defined by the Uniform Crime Reporting Program as any willful or malicious burning or attempt to burn, with or without intent to defraud, a dwelling house, public building, a motor vehicle or aircraft, personal property of another, etc. Only fires determined through investigation to have been willfully or maliciously set are classified as arsons. Fires of suspicious or unknown origins are excluded.

Population Estimates

State, county and incorporated city population estimates are prepared and reviewed prior to the end of each calendar year for certification by the governor by March 1. The Nevada Department of Taxation and Nevada State Demographer, Bureau of Business and Economic Research, College of Business Administration, University of Nevada, Reno, prepares these estimates.

Crime Rates

Crime rates involve the number of Index Crimes per unit of population, usually per 100,000 persons. Because Nevada has such a low population, a rate per 1,000 persons is used to reflect a more realistic volume. No attempt is made to incorporate transient populations or other factors that contribute to the ratio and types of crime in given areas. Any effort to make comparisons of crime rates between areas should be tempered by these population and environmental variables.

Crime rates are one of the most meaningful statistical elements. Computation of crime rates per 1,000 population is achieved by dividing the community's population by 1,000, then dividing the number of offenses in each class by that number. The answer is the number of offenses per 1,000 population and is the crime rate for that particular offense. In Table 2, the County Total Crime Rate is computed after subtracting the population figure for all non-reporting agencies for the current month.

The index offense "Aggravated Assault" is an item of special interest to users of Nevada's UCR report. In Tables 1 & 3, where Nevada and National crime rates are compared, "simple assaults" are subtracted from the total of all assaults following FBI UCR rules, thus allowing for direct comparison. However, total assaults (simple and aggravated) are also presented in the Nevada report. This is because the Nevada UCR staff believes this figure is an important indicator of risk for citizens and it presents a more balanced picture of this portion of the crime index to law enforcement personnel.

The Federal Bureau of Investigation, Uniform Crime Reporting Section, publishes national rates.

Clearance Rates

The percentage of crimes cleared is obtained by dividing the number of offenses cleared by the number of offenses known. This number is then multiplied by 100.

Nevada--Statewide Summary--UCR
Index Crimes

March 2010

Offense	Crimes this Month	# Cleared this Month	% Cleared this Month	Crimes this YTD	# Cleared this YTD	% Cleared this YTD	March Crimes 2009	March Cleared 2009	% March Cleared 2009	2009 NV Rate / 1,000 (Proj) *	2008 NV Rate / 1,000	2008 Natl. Rate / 1,000
Murder	13	13	100	53	50	94	10	9	90	0.08	0.09	0.05
Rape	72	21	29	314	81	26	101	24	24	0.46	0.41	0.29
Robbery	448	136	30	1,672	503	30	564	158	28	2.47	2.39	1.45
Assault *	909	492	54	3,636	1,867	51	910	438	48	5.38	4.11	2.75
Burglary	1,757	175	10	6,803	728	11	1,761	238	14	10.07	8.94	7.31
Larceny	3,617	1,194	33	14,244	4,666	33	4,067	1,192	29	21.08	18.34	21.67
MV Theft	839	73	9	3,051	250	8	1,206	80	7	4.52	5.88	3.15
Arson	43	11	26	140	28	20	57	9	16	0.21	0.24	0.24
Total	7,698	2,115	27	29,913	8,173	27	8,676	2,148	25	44.27	40.40	36.91

* The projected Crime Rate for Assaults is computed after subtracting Simple Assaults from the total for all Assaults following FBI guidelines. Therefore, this rate may be compared directly to the National Rate. See Table 3 and the "Footnotes/Exceptions page for further information.

Nevada UCR - - Monthly Crime/ Clearance Summary - - All Crimes

Contributing Agency	Est. Pop	Murder		Rape		Robbery		Assault		Burglary		Larceny		MV Theft		Arson		Total Crimes	Crime Rate	Clearances	Clearance Rate
Carson County																		March 2010			
Carson SO	57,723	0	0	0	0	1	0	70	53	23	7	51	16	14	3	0	0	159	2.75	79	49.7%
County Total	57,723	0	0	0	0	1	0	70	53	23	7	51	16	14	3	0	0	159	2.75	79	49.7%
Churchill County																					
Churchill SO	18,738	0	0	0	0	0	0	14	15	3	0	7	2	9	0	0	0	33	1.76	17	51.5%
Fallon PD	8,452	0	0	0	0	0	0	27	20	3	1	23	4	1	0	0	0	54	6.39	25	46.3%
County Total	27,190	0	0	0	0	0	0	41	35	6	1	30	6	10	0	0	0	87	3.20	42	48.3%
Clark County																					
Boulder PD	15,863	0	0	0	0	0	0	14	13	4	0	5	2	1	0	0	0	24	1.51	15	62.5%
Clark Co. Schools PD*	313,600	0	0	1	0	4	2	98	65	22	6	79	13	2	1	6	2	212	0.68	89	42.0%
Henderson	260,161	0	0	0	0	17	15	257	206	83	21	342	114	35	0	4	1	738	2.84	357	48.4%
LV Metro PD	1,449,036	10	10	52	11	340	86	2,716	1,307	1,096	64	1,801	660	580	43	12	0	6,607	4.56	2,181	33.0%
LV Fire Dept*																10	1	10	N/A	1	10.0%
Mesquite	18,787	0	0	0	0	1	1	10	8	4	0	24	9	1	0	0	0	40	2.13	18	45.0%
North Las Vegas PD	210,472	1	1	7	1	38	13	227	174	164	12	252	81	82	2	1	1	772	3.67	285	36.9%
Taxicab Authority		0	0	0	0	0	0	1	1	0	0	21	15	0	0	0	0	22	0.00	16	72.7%
UNLV PD*	30,850	0	0	0	0	1	0	11	8	5	0	21	0	3	0	0	0	41	1.33	8	19.5%
County Total	1,954,319	11	11	60	12	401	117	3,334	1,782	1,378	103	2,545	894	704	46	33	5	8,466	4.33	2,970	35.1%
Douglas County																					
Douglas SO	52,386	0	0	0	1	0	0	44	38	23	3	64	8	7	1	2	0	140	2.67	51	36.4%
County Total	52,386	0	0	0	1	0	0	44	38	23	3	64	8	7	1	2	0	140	2.67	51	36.4%

*Population figure not included in county total
Table 2

5
Assault data includes ALL assaults (aggravated and simple).

Nevada UCR - - Monthly Crime/ Clearance Summary - - All Crimes

Contributing Agency	Est. Pop	Murder		Rape		Robbery		Assault		Burglary		Larceny		MV Theft		Arson		Total Crimes	Crime Rate	Clearances	Clearance Rate
Elko County																		March 2010			
Elko SO	23,004	0	0	0	0	0	0	4	3	1	0	2	2	0	0	0	0	7	0.30	5	71.4%
Carlin PD	2,281	0	0	0	0	0	0	1	1	4	2	1	1	0	0	0	0	6	2.63	4	66.7%
Elko PD	18,183	0	0	4	0	1	0	36	20	23	0	54	10	3	0	1	0	122	6.71	30	24.6%
WestWendover PD	4,871	0	0	0	0	1	0	12	4	3	1	2	0	0	0	0	0	18	3.70	5	27.8%
County Total	48,339	0	0	4	0	2	0	53	28	31	3	59	13	3	0	1	0	153	3.17	44	28.8%
Esmeralda County																					
Esmeralda SO	1,262	0	0	0	0	0	0	0	0	1	0	0	0	0	0	0	0	1	0.79	0	0.0%
County Total	1,262	0	0	0	0	0	0	0	0	1	0	0	0	0	0	0	0	1	0.79	0	0.0%
Eureka County																					
Eureka SO	1,460	0	0	0	0	0	0	1	0	0	0	0	0	0	0	0	0	1	0.68	0	0.0%
County Total	1,460	0	0	0	0	0	0	1	0	0	0	0	0	0	0	0	0	1	0.68	0	0.0%
Humboldt County																					
Humboldt SO	10,108	0	0	0	0	0	0	5	2	0	0	2	0	0	0	0	0	7	0.69	2	28.6%
Winnemucca PD	7,643	0	0	0	0	0	0	9	9	0	0	7	6	0	0	0	0	16	2.09	15	
County Total	17,751	0	0	0	0	0	0	14	11	0	0	9	6	0	0	0	0	23	1.30	17	73.9%

*Population figure not included in county total
Table 2

6
Assault data includes ALL assaults (aggravated and simple).

Nevada UCR - - Monthly Crime/ Clearance Summary - - All Crimes

Contributing Agency	Est. Pop	Murder		Rape		Robbery		Assault		Burglary		Larceny		MV Theft		Arson		Total Crimes	Crime Rate	Clearances	Clearance Rate
Lander County																		March 2010			
Lander SO	5,655	0	0	0	0	0	0	20	18	4	2	5	2	1	1	0	0	30	5.31	23	76.7%
County Total	5,655	0	0	0	0	0	0	20	18	4	2	5	2	1	1	0	0	30	5.31	23	76.7%
Lincoln County																					
Lincoln SO	3,987	0	0	0	0	0	0	8	8	0	1	4	1	0	0	0	0	12	3.01	10	83.3%
County Total	3,987	0	0	0	0	0	0	8	8	0	1	4	1	0	0	0	0	12	3.01	10	83.3%
Lyon County																					
Lyon SO	50,774	0	0	1	1	0	0	43	42	12	3	41	24	6	3	0	0	103	2.03	73	70.9%
Yerington PD	3,257	0	0	0	0	0	0	4	0	3	0	0	0	0	0	0	0	7	2.15	0	0.0%
County Total	54,031	0	0	1	1	0	0	47	42	15	3	41	24	6	3	0	0	110	2.04	73	66.4%
Mineral County																					
Mineral SO	4,399	0	0	0	0	0	0	4	4	0	0	2	1	0	0	0	0	6	1.36	5	83.3%
County Total	4,399	0	0	0	0	0	0	4	4	0	0	2	1	0	0	0	0	6	1.36	5	83.3%
Nye County																					
Nye SO	44,795	0	0	1	0	1	0	65	30	28	3	65	6	10	5	0	0	170	3.80	44	25.9%
County Total	44,795	0	0	1	0	1	0	65	30	28	3	65	6	10	5	0	0	170	3.80	44	25.9%

*Population figure not included in county total
Table 2

Nevada UCR - - Monthly Crime/ Clearance Summary - - All Crimes

Contributing Agency	Est. Pop	Murder		Rape		Robbery		Assault		Burglary		Larceny		MV Theft		Arson		Total Crimes	Crime Rate	Clearances	Clearance Rate
Pershing County																		March 2010			
Pershing SO	4,528	0	0	0	0	0	0	1	1	2	1	4	1	0	0	0	0	7	1.55	3	42.9%
Lovelock PD	2,427	0	0	0	0	0	0	3	2	1	0	2	1	0	0	0	0	6	2.47	3	50.0%
County Total	6,955	0	0	0	0	0	0	4	3	3	1	6	2	0	0	0	0	13	1.87	6	46.2%
Storey County																					
Storey	4,110	0	0	0	0	0	0	2	2	3	0	0	0	1	1	1	1	7	1.70	4	57.1%
County Total	4,110	0	0	0	0	0	0	2	2	3	0	0	0	1	1	1	1	7	1.70	4	57.1%
Washoe County																					
Washoe SO	106,868	0	0	2	0	1	0	50	40	32	6	46	12	5	2	0	0	136	1.27	60	44.1%
Reno PD	214,371	1	1	2	3	37	14	261	148	147	14	458	121	53	6	2	1	961	4.48	308	32.0%
Sparks PD	87,846	1	1	2	4	4	4	119	66	57	27	188	75	23	4	0	0	394	4.49	181	45.9%
UNR PD*	16,671	0	0	0	0	0	0	2	2	3	1	19	1	1	0	0	0	25	1.50	4	16.0%
Washoe Co Schl PD*	68,366	0	0	0	0	0	0	8	8	0	0	14	6	0	0	4	4	26	0.38	18	69.2%
TMCC PD*	15,260	0	0	0	0	0	0	0	0	0	0	5	0	0	0	0	0	5	0.33	0	0.0%
County Total	409,085	2	2	6	7	42	18	440	264	239	48	730	215	82	12	6	5	1,547	3.78	571	36.9%
White Pine County																					
White Pine SO	9,542	0	0	0	0	1	1	1	0	3	0	6	0	1	1	0	0	12	1.26	2	16.7%
County Total	9,542	0	0	0	0	1	1	1	0	3	0	6	0	1	1	0	0	12	1.26	2	16.7%
Grand Total	2,702,989	13	13	72	21	448	136	4,148	2,318	1,757	175	3,617	1,194	839	73	43	11	10,937	4.05	3,941	36.0%

*Population figure not included in county total
Table 2

8
Assault data includes ALL assaults (aggravated and simple).

Nevada UCR - - Monthly Crimes/Clearances Summary - - Index Crimes
March 2010

Est. Pop	Murder		Rape		Robbery		*Assault		Burglary		Larceny		MV Theft		Arson		Total Crimes	Crime Rate	Total Clear	Clearance Rate	
Statewide Totals																					
(Crimes/Clearances)	2,702,989	13	13	72	21	448	136	909	492	1757	175	3617	1194	839	73	43	11	7698	2.85	2115	27.47

Nevada (Projected 2010) vs National (2008) Index Crime Rates

(per 1,000 population)

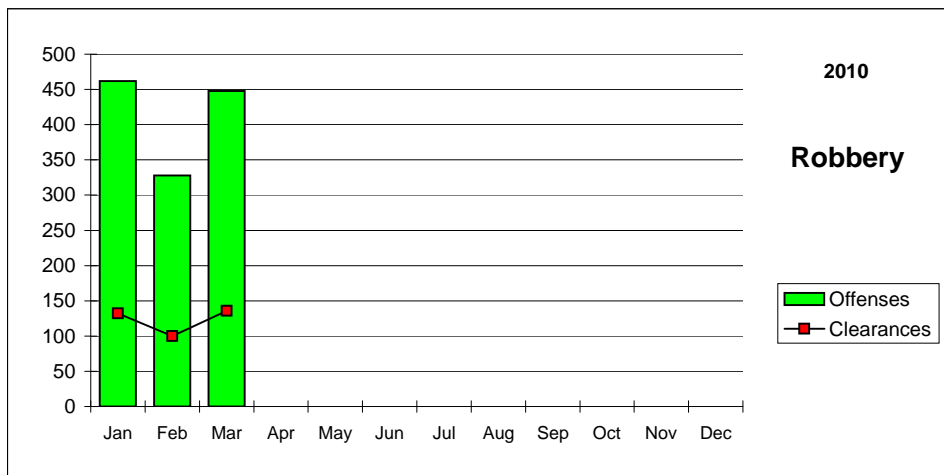
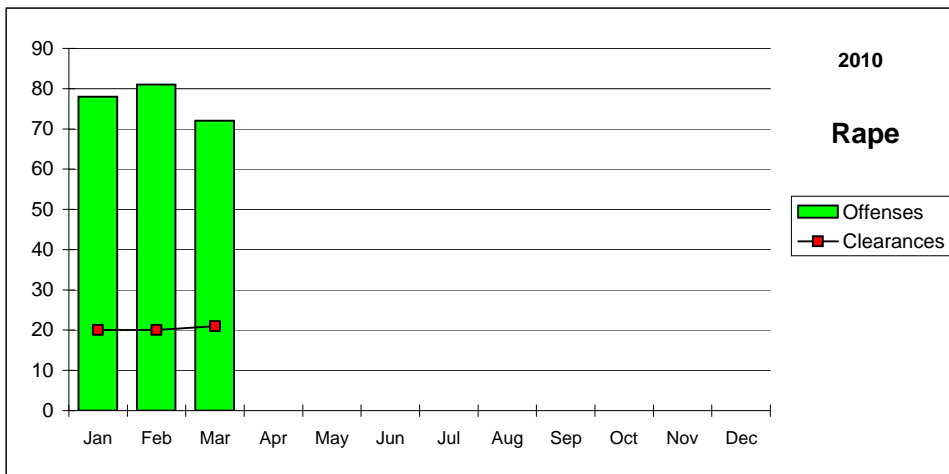
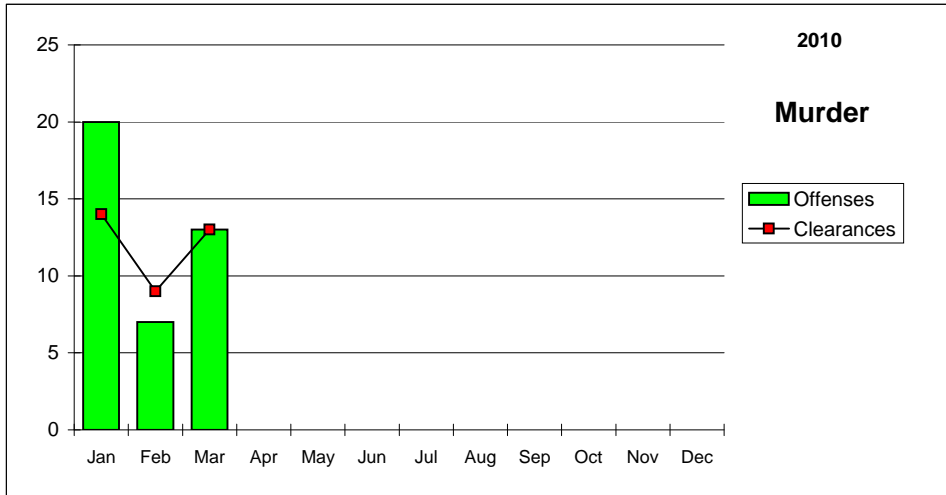
	Murder	Rape	Robbery	Assault	Burglary	Larceny	MV Theft	**Arson	Crime Rate
Nevada	0.08	0.46	2.47	5.38	10.07	21.08	4.52	0.21	44.27
National	0.05	0.29	1.45	2.75	7.31	21.67	3.15	0.24	36.91

Nevada (Projected 2010) vs National (2008) Crime Clearance Rates

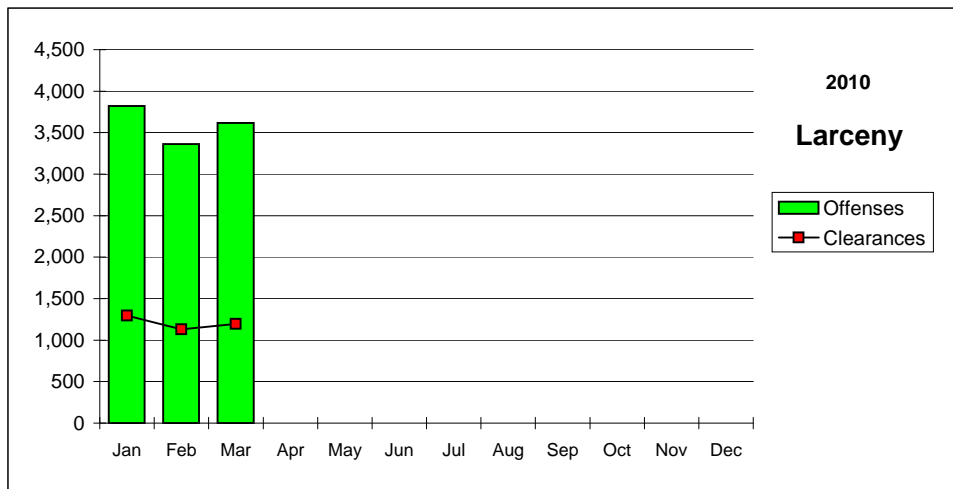
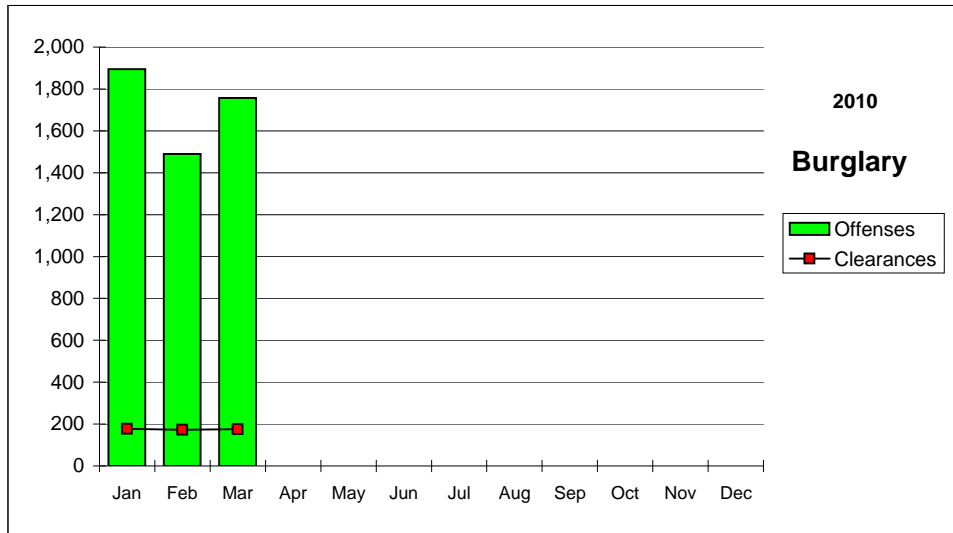
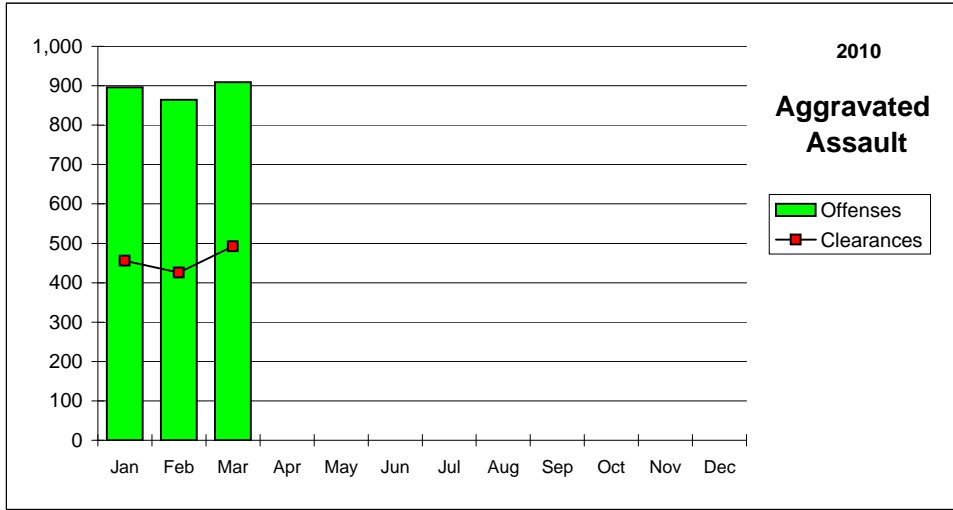
(by Percent)

	Murder	Rape	Robbery	Assault	Burglary	Larceny	MV Theft	Arson	Clear Rate
Nevada	94.3	25.8	30.1	51.3	10.7	32.8	8.2	20.0	27.5
National	63.6	40.4	26.8	54.9	12.5	19.9	12.0	17.8	31.0

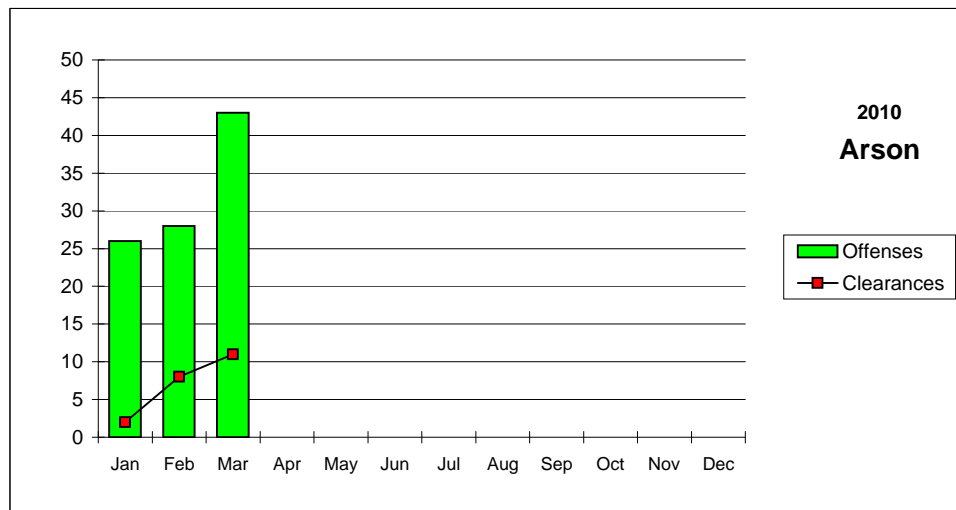
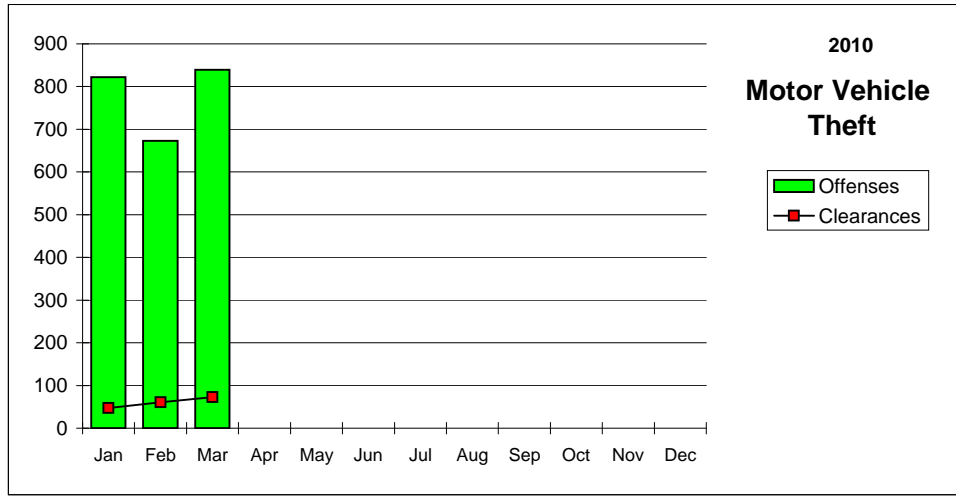
Nevada--Graphic Summary--UCR



Nevada--Graphic Summary--UCR



Nevada--Graphic Summary--UCR



Nevada--Murder--Incidence Level Variation--UCR

March 2010

Agency	March 2010 Offenses	March 2010 Cleared	2010 YTD Offenses	2010 YTD Cleared	March 2009 Offenses	March 2009 Cleared	2009 YTD Offenses	2009 YTD Cleared
Boulder	0	0	0	0	0	0	1	0
Carlin PD	0	0	0	0	0	0	0	0
Carson SO	0	0	0	0	0	0	0	0
Churchill SO	0	0	0	0	0	0	0	0
Clark Co Schl PD	0	0	0	0	0	0	0	0
Douglas SO	0	0	0	0	0	0	0	0
Elko PD	0	0	0	0	0	0	0	0
Elko SO	0	0	0	0	0	0	0	0
Esmeralda SO	0	0	0	0	0	0	0	0
Eureka SO	0	0	0	0	0	0	0	0
Fallon PD	0	0	0	0	0	0	0	0
Henderson PD	0	0	1	2	1	1	1	2
Humboldt SO	0	0	0	0	0	0	0	0
Lander SO	0	0	0	0	0	0	0	0
Lincoln SO	0	0	0	0	0	0	0	1
Lovelock PD	0	0	0	0	0	0	0	0
LV Fire Dept	0	0	0	0	0	0	0	0
LV Metro	10	10	40	36	7	6	28	23
Lyon SO	0	0	0	0	0	0	0	0
Mesquite PD	0	0	0	0	0	0	0	0
Mineral SO	0	0	0	0	0	0	0	0
NLVPD	1	1	7	6	1	0	6	2
Nye SO	0	0	1	1	1	1	1	1
Pershing SO	0	0	0	0	0	0	0	0
Reno PD	1	1	3	3	0	1	2	3
Sparks PD	1	1	1	2	0	0	0	0
Storey SO	0	0	0	0	0	0	0	0
Taxicab Authority	0	0	0	0	0	0	0	0
TMCC PD	0	0	0	0	0	0	0	0
UNLV PD	0	0	0	0	0	0	0	0
UNR PD	0	0	0	0	0	0	0	0
Washoe SO	0	0	0	0	0	0	0	0
Washoe Co Schl PD	0	0	0	0	0	0	0	0
Wendover PD	0	0	0	0	0	0	0	0
White Pine SO	0	0	0	0	0	0	0	0
Winnemucca PD	0	0	0	0	0	0	0	0
Yerington PD	0	0	0	0	0	0	0	0
TOTALS	13	13	53	50	10	9	39	32

Nevada--Rape--Incidence Level Variation--UCR

March 2010

Agency	March 2010 Offenses	March 2010 Cleared	2010 YTD Offenses	2010 YTD Cleared	March 2009 Offenses	March 2009 Cleared	2009 YTD Offenses	2009 YTD Cleared
Boulder	0	0	1	0	0	0	0	0
Carlin PD	0	0	0	0	0	0	0	0
Carson SO	0	0	1	0	0	0	1	0
Churchill SO	0	0	3	4	1	1	1	1
Clark Co Schl PD	1	0	1	0	1	0	1	0
Douglas SO	0	1	0	1	1	0	3	0
Elko PD	4	0	7	2	2	0	4	0
Elko SO	0	0	0	0	0	0	0	0
Esmeralda SO	0	0	0	0	0	0	0	0
Eureka SO	0	0	0	0	0	0	1	1
Fallon PD	0	0	0	0	0	0	0	0
Henderson PD	0	0	7	6	4	3	13	11
Humboldt SO	0	0	0	0	0	0	0	0
Lander SO	0	0	2	2	0	0	1	0
Lincoln SO	0	0	0	0	0	0	0	0
Lovelock PD	0	0	0	0	0	0	0	0
LV Fire Dept	0	0	0	0	0	0	0	0
LV Metro	52	11	214	38	72	17	180	33
Lyon SO	1	1	2	2	0	0	0	0
Mesquite PD	0	0	0	0	0	0	0	1
Mineral SO	0	0	0	0	0	0	0	0
NLVPD	7	1	17	7	4	2	9	5
Nye SO	1	0	6	1	1	1	3	3
Pershing SO	0	0	1	0	0	0	2	0
Reno PD	2	3	22	6	10	0	25	3
Sparks PD	2	4	18	12	4	0	12	5
Storey SO	0	0	0	0	0	0	0	0
Taxicab Authority	0	0	0	0	0	0	0	0
TMCC PD	0	0	0	0	0	0	0	0
UNLV PD	0	0	0	0	0	0	1	0
UNR PD	0	0	0	0	0	0	0	0
Washoe SO	2	0	9	0	0	0	0	0
Washoe Co Schl PD	0	0	0	0	0	0	0	0
Wendover PD	0	0	1	0	1	0	3	0
White Pine SO	0	0	2	0	0	0	0	0
Winnemucca PD	0	0	0	0	0	0	0	0
Yerington PD	0	0	0	0	0	0	0	0
TOTALS	72	21	314	81	101	24	260	63

Nevada--Robbery--Incidence Level Variation--UCR

March 2010

Agency	March 2010 Offenses	March 2010 Cleared	2010 YTD Offenses	2010 YTD Cleared	March 2009 Offenses	March 2009 Cleared	2009 YTD Offenses	2009 YTD Cleared
Boulder	0	0	0	0	0	0	0	0
Carlin PD	0	0	0	0	0	0	0	0
Carson SO	1	0	8	6	2	2	8	7
Churchill SO	0	0	0	0	0	0	0	0
Clark Co Schl PD	4	2	19	10	8	5	17	8
Douglas SO	0	0	2	0	2	2	3	3
Elko PD	1	0	6	4	0	0	1	1
Elko SO	0	0	0	0	0	0	0	0
Esmeralda SO	0	0	0	0	0	0	0	0
Eureka SO	0	0	0	0	0	0	0	0
Fallon PD	0	0	1	0	1	0	1	0
Henderson PD	17	15	69	40	28	8	81	26
Humboldt SO	0	0	0	0	0	0	0	0
Lander SO	0	0	0	0	0	0	0	0
Lincoln SO	0	0	0	0	0	0	0	0
Lovelock PD	0	0	0	0	0	0	0	0
LV Fire Dept	0	0	0	0	0	0	0	0
LV Metro	340	86	1,253	338	423	102	1,198	287
Lyon SO	0	0	2	0	1	1	3	1
Mesquite PD	1	1	2	1	1	0	2	1
Mineral SO	0	0	0	0	0	0	0	0
NLVPD	38	13	133	39	47	17	162	48
Nye SO	1	0	3	1	1	1	6	5
Pershing SO	0	0	0	0	0	0	0	0
Reno PD	37	14	134	46	38	13	104	30
Sparks PD	4	4	26	14	12	6	33	10
Storey SO	0	0	0	0	0	0	0	0
Taxicab Authority	0	0	0	0	0	0	0	0
TMCC PD	0	0	0	0	0	0	0	0
UNLV PD	1	0	2	0	0	0	0	0
UNR PD	0	0	0	0	0	0	0	0
Washoe SO	1	0	9	3	-1	0	2	1
Washoe Co Schl PD	0	0	0	0	0	0	0	0
Wendover PD	1	0	1	0	0	0	0	0
White Pine SO	1	1	1	1	1	1	0	0
Winnemucca PD	0	0	1	0	0	0	0	0
Yerington PD	0	0	0	0	0	0	0	0
TOTALS	448	136	1,672	503	564	158	1,621	428

Nevada--Aggravated Assault--Incidence Level Variation--UCR

March 2010

Agency	March 2010 Offenses	March 2010 Cleared	2010 YTD Offenses	2010 YTD Cleared	March 2009 Offenses	March 2009 Cleared	2009 YTD Offenses	2009 YTD Cleared
Boulder	1	1	7	7	0	0	2	0
Carlin PD	0	0	0	0	1	1	6	6
Carson SO	19	16	55	43	8	8	42	23
Churchill SO	5	4	12	8	0	2	2	3
Clark Co Schl PD	2	2	13	10	4	3	9	5
Douglas SO	3	5	21	14	1	1	7	7
Elko PD	4	2	12	12	6	2	15	8
Elko SO	1	1	3	3	1	0	1	0
Esmeralda SO	0	0	0	0	0	0	1	0
Eureka SO	1	0	1	0	1	1	2	2
Fallon PD	0	0	10	9	1	1	2	2
Henderson PD	34	22	103	80	18	12	51	26
Humboldt SO	4	2	13	10	4	4	11	9
Lander SO	1	1	10	8	0	0	10	7
Lincoln SO	1	1	3	2	0	0	0	0
Lovelock PD	0	0	2	2	0	0	1	2
LV Fire Dept	0	0	0	0	0	0	0	0
LV Metro	656	309	2,541	1,153	616	279	1,710	781
Lyon SO	8	8	36	34	6	6	18	17
Mesquite PD	0	0	1	1	1	0	3	1
Mineral SO	2	2	10	10	2	2	4	4
NLVPD	69	60	336	210	73	31	224	110
Nye SO	20	7	79	30	7	6	20	16
Pershing SO	0	0	3	2	2	2	4	2
Reno PD	49	29	199	109	102	46	230	109
Sparks PD	13	6	64	39	17	5	50	25
Storey SO	0	0	2	1	0	0	0	0
Taxicab Authority	0	0	2	2	1	1	1	1
TMCC PD	0	0	0	0	0	0	1	1
UNLV PD	1	1	2	1	1	1	2	1
UNR PD	2	2	7	7	0	0	0	0
Washoe SO	7	8	57	46	29	18	62	47
Washoe Co Schl PD	1	1	2	2	0	0	2	2
Wendover PD	1	0	3	2	3	1	7	2
White Pine SO	0	0	8	3	0	0	2	2
Winnemucca PD	2	2	7	7	5	5	8	3
Yerington PD	2	0	12	0	0	0	0	0
TOTALS	909	492	3,636	1,867	910	438	2,510	1,224

Nevada--All Assaults--Incidence Level Variation--UCR

March 2010

Agency	March 2010 Offenses	March 2010 Cleared	2010 YTD Offenses	2010 YTD Cleared	March 2009 Offenses	March 2009 Cleared	2009 YTD Offenses	2009 YTD Cleared
Boulder	14	13	46	40	0	0	6	2
Carlin PD	1	1	7	7	8	8	15	15
Carson SO	70	53	242	158	50	34	179	107
Churchill SO	14	15	59	51	5	10	28	33
Clark Co Schl PD	98	65	337	219	111	62	282	164
Douglas SO	44	38	210	146	42	29	126	108
Elko PD	36	20	111	79	36	23	91	64
Elko SO	4	3	11	10	1	0	3	1
Esmeralda SO	0	0	1	1	1	1	2	1
Eureka SO	1	0	1	0	1	1	2	2
Fallon PD	27	20	111	88	21	12	49	37
Henderson PD	257	206	899	827	240	167	644	439
Humboldt SO	5	2	15	11	5	5	13	11
Lander SO	20	18	59	51	6	6	31	25
Lincoln SO	8	8	15	13	6	2	6	2
Lovelock PD	3	2	10	10	4	5	15	13
LV Fire Dept	0	0	0	0	0	0	0	0
LV Metro	2,716	1,307	10,212	4,736	2,515	1,182	6,829	3,133
Lyon SO	43	42	178	171	48	46	139	136
Mesquite PD	10	8	59	51	16	14	45	38
Mineral SO	4	4	15	15	2	2	12	12
NLVPD	227	174	1,038	649	301	161	803	485
Nye SO	65	30	235	132	61	58	158	151
Pershing SO	1	1	5	3	2	2	5	3
Reno PD	261	148	1,110	619	396	211	1,065	550
Sparks PD	119	66	435	266	132	81	348	186
Storey SO	2	2	11	7	4	3	8	5
Taxicab Authority	1	1	12	12	9	8	18	14
TMCC PD	0	0	0	0	0	0	1	1
UNLV PD	11	8	16	10	6	6	13	11
UNR PD	2	2	8	8	0	0	0	0
Washoe SO	50	40	231	187	74	50	177	131
Washoe Co Schl PD	8	8	21	20	0	0	13	13
Wendover PD	12	4	45	24	11	3	43	16
White Pine SO	1	0	21	10	1	0	12	11
Winnemucca PD	9	9	33	33	17	12	40	33
Yerington PD	4	0	18	0	4	0	10	0
TOTALS	4,148	2,318	15,837	8,664	4,136	2,204	11,231	5,953

Nevada--Burglary--Incidence Level Variation--UCR

March 2010

Agency	March 2010 Offenses	March 2010 Cleared	2010 YTD Offenses	2010 YTD Cleared	March 2009 Offenses	March 2009 Cleared	2009 YTD Offenses	2009 YTD Cleared
Boulder	4	0	13	0	8	0	21	2
Carlin PD	4	2	7	3	1	1	6	6
Carson SO	23	7	81	17	24	7	67	14
Churchill SO	3	0	16	3	3	1	8	4
Clark Co Schl PD	22	6	66	20	15	4	52	17
Douglas SO	23	3	50	10	15	3	43	9
Elko PD	23	0	93	7	13	3	29	3
Elko SO	1	0	6	3	5	0	15	2
Esmeralda SO	1	0	1	0	0	0	0	0
Eureka SO	0	0	0	0	1	1	2	1
Fallon PD	3	1	9	3	10	1	15	4
Henderson PD	83	21	411	81	89	24	349	84
Humboldt SO	0	0	3	0	0	0	0	0
Lander SO	4	2	19	10	6	2	23	6
Lincoln SO	0	1	0	2	1	0	2	0
Lovelock PD	1	0	7	9	1	0	5	5
LV Fire Dept	0	0	0	0	0	0	0	0
LV Metro	1,096	64	4,243	258	1,023	86	3,322	221
Lyon SO	12	3	55	8	20	2	48	6
Mesquite PD	4	0	14	1	5	2	11	4
Mineral SO	0	0	4	3	2	0	4	1
NLVPD	164	12	564	41	154	16	503	60
Nye SO	28	3	136	15	23	8	68	18
Pershing SO	2	1	4	2	1	1	2	1
Reno PD	147	14	535	74	178	39	444	97
Sparks PD	57	27	269	118	84	24	248	76
Storey SO	3	0	4	0	2	0	4	0
Taxicab Authority	0	0	2	1	0	0	0	0
TMCC PD	0	0	0	0	0	0	2	0
UNLV PD	5	0	8	0	6	0	13	0
UNR PD	3	1	7	1	0	0	0	0
Washoe SO	32	6	125	24	51	10	115	19
Washoe Co Schl PD	0	0	3	3	0	0	2	0
Wendover PD	3	1	11	3	2	1	18	1
White Pine SO	3	0	14	1	3	0	3	0
Winnemucca PD	0	0	11	7	9	2	22	7
Yerington PD	3	0	12	0	6	0	11	0
TOTALS	1,757	175	6,803	728	1,761	238	5,477	668

Nevada--Larceny--Incidence Level Variation--UCR

March 2010

Agency	March 2010 Offenses	March 2010 Cleared	2010 YTD Offenses	2010 YTD Cleared	March 2009 Offenses	March 2009 Cleared	2009 YTD Offenses	2009 YTD Cleared
Boulder	5	2	15	4	3	0	19	3
Carlin PD	1	1	7	2	2	2	4	4
Carson SO	51	16	209	79	82	35	202	87
Churchill SO	7	2	16	11	8	10	29	17
Clark Co Schl PD	79	13	312	68	98	21	256	50
Douglas SO	64	8	207	25	53	8	145	31
Elko PD	54	10	166	23	29	6	74	15
Elko SO	2	2	6	6	6	4	16	6
Esmeralda SO	0	0	0	0	1	1	2	2
Eureka SO	0	0	3	1	0	0	1	0
Fallon PD	23	4	71	23	30	6	74	30
Henderson PD	342	114	1,212	461	252	61	755	202
Humboldt SO	2	0	6	1	2	0	5	2
Lander SO	5	2	14	9	4	1	14	5
Lincoln SO	4	1	7	4	4	0	5	0
Lovelock PD	2	1	10	5	2	4	5	5
LV Fire Dept	0	0	0	0	0	0	0	0
LV Metro	1,801	660	7,460	2,674	2,189	682	6,666	2,000
Lyon SO	41	24	157	73	34	11	98	39
Mesquite PD	24	9	57	24	14	6	46	18
Mineral SO	2	1	4	3	1	1	2	1
NLVPD	252	81	1,028	301	289	63	866	228
Nye SO	65	6	214	43	41	16	126	47
Pershing SO	4	1	7	2	2	0	5	0
Reno PD	458	121	1,844	489	564	152	1,368	337
Sparks PD	188	75	679	229	180	53	488	132
Storey SO	0	0	6	0	2	0	9	0
Taxicab Authority	21	15	85	17	49	22	128	68
TMCC PD	5	0	12	0	2	0	4	0
UNLV PD	21	0	75	5	21	2	46	3
UNR PD	19	1	43	5	0	0	0	0
Washoe SO	46	12	175	41	57	10	211	28
Washoe Co Schl PD	14	6	63	26	16	5	44	17
Wendover PD	2	0	22	2	8	2	25	4
White Pine SO	6	0	24	2	6	0	14	1
Winnemucca PD	7	6	28	8	13	8	27	13
Yerington PD	0	0	0	0	3	0	3	0
TOTALS	3,617	1,194	14,244	4,666	4,067	1,192	11,782	3,395

Nevada--MV Theft--Incidence Level Variation--UCR

March 2010

Agency	March 2010 Offenses	March 2010 Cleared	2010 YTD Offenses	2010 YTD Cleared	March 2009 Offenses	March 2009 Cleared	2009 YTD Offenses	2009 YTD Cleared
Boulder	1	0	11	0	1	0	1	0
Carlin PD	0	0	0	0	0	0	1	1
Carson SO	14	3	37	12	5	1	19	6
Churchill SO	9	0	10	1	2	0	5	0
Clark Co Schl PD	2	1	9	1	12	0	22	1
Douglas SO	7	1	15	4	4	1	10	3
Elko PD	3	0	14	1	1	0	10	0
Elko SO	0	0	1	0	4	3	6	4
Esmeralda SO	0	0	0	0	0	0	0	0
Eureka SO	0	0	0	0	0	0	0	0
Fallon PD	1	0	1	0	2	0	3	0
Henderson PD	35	0	152	8	62	3	187	6
Humboldt SO	0	0	0	0	0	0	0	0
Lander SO	1	1	1	1	0	0	4	2
Lincoln SO	0	0	0	0	3	1	5	1
Lovelock PD	0	0	1	0	0	0	1	1
LV Fire Dept	0	0	0	0	0	0	0	0
LV Metro	580	43	2106	153	839	44	2510	117
Lyon SO	6	3	25	8	7	4	15	4
Mesquite PD	1	0	4	0	1	0	6	1
Mineral SO	0	0	0	0	0	0	2	0
NLVPD	82	2	293	13	116	7	316	18
Nye SO	10	5	36	6	6	0	20	1
Pershing SO	0	0	0	0	0	0	0	0
Reno PD	53	6	218	25	90	7	221	23
Sparks PD	23	4	79	11	28	5	82	22
Storey SO	1	1	2	1	0	0	1	0
Taxicab Authority	0	0	0	0	0	0	0	0
TMCC PD	0	0	0	0	0	0	0	0
UNLV PD	3	0	5	0	6	0	11	1
UNR PD	1	0	2	0	0	0	0	0
Washoe SO	5	2	23	4	13	3	35	5
Washoe Co Schl PD	0	0	1	0	0	0	2	1
Wendover PD	0	0	0	0	1	0	2	0
White Pine SO	1	1	2	1	1	1	2	0
Winnemucca PD	0	0	3	0	2	0	8	0
Yerington PD	0	0	0	0	0	0	0	0
TOTALS	839	73	3051	250	1206	80	3507	218

Nevada--Arson--Incidence Level Variation--UCR

March 2010

Agency	March 2010 Offenses	March 2010 Cleared	2010 YTD Offenses	2010 YTD Cleared	March 2009 Offenses	March 2009 Cleared	2009 YTD Offenses	2009 YTD Cleared
Boulder	0	0	0	0	0	0	2	1
Carlin PD	0	0	1	1	0	0	0	0
Carson SO	0	0	2	0	2	0	4	0
Churchill SO	0	0	0	0	0	0	0	0
Clark Co Schl PD	6	2	18	5	7	5	14	9
Douglas SO	2	0	3	0	0	0	1	0
Elko PD	1	0	3	0	0	0	0	0
Elko SO	0	0	0	0	0	0	0	0
Esmeralda SO	0	0	0	0	0	0	0	0
Eureka SO	0	0	0	0	0	0	0	0
Fallon PD	0	0	0	0	0	0	0	0
Henderson PD	4	1	16	2	6	1	35	2
Humboldt SO	0	0	0	0	0	0	0	0
Lander SO	0	0	0	0	0	0	0	0
Lincoln SO	0	0	0	0	0	0	0	0
Lovelock PD	0	0	0	0	0	0	0	0
LV Fire Dept	10	1	27	3	6	0	13	0
LV Metro	12	0	40	0	21	0	54	0
Lyon SO	0	0	2	2	1	0	1	0
Mesquite PD	0	0	0	0	0	0	0	0
Mineral SO	0	0	0	0	0	0	0	0
NLVPD	1	1	6	1	4	2	8	2
Nye SO	0	0	6	2	0	0	1	0
Pershing SO	0	0	0	0	0	0	0	0
Reno PD	2	1	6	3	2	0	10	1
Sparks PD	0	0	1	1	5	1	8	1
Storey SO	1	1	1	1	0	0	0	0
Taxicab Authority	0	0	0	0	0	0	0	0
TMCC PD	0	0	0	0	0	0	0	0
UNLV PD	0	0	0	0	0	0	0	0
UNR PD	0	0	0	0	0	0	0	0
Washoe SO	0	0	1	1	0	0	1	0
Washoe CO Sci PD	4	4	7	6	2	0	4	0
Wendover PD	0	0	0	0	0	0	1	0
White Pine SO	0	0	0	0	0	0	1	1
Winnemucca PD	0	0	0	0	1	0	1	0
Yerington PD	0	0	0	0	0	0	0	0
TOTALS	43	11	140	28	57	9	159	17

State of Nevada

Hate Crimes Reports for March 2010

#	Agency	Date of Incident	UCR Offense	Location	Bias Motivation	Victim Type and Number	Offender Race and Number
1	LAS VEGAS METRO PD	3/2/2010	DESTRUCTION/DAMAGE/VANDALISM	RESIDENCE/HOME	ANTI-BLACK	INDIVIDUAL-01	UNKNOWN-00
2	LAS VEGAS METRO PD	3/19/2010	INTIMIDATION	RESIDENCE/HOME	ANTI-OTHER RELIGION	INDIVIDUAL-01	WHITE-02
3	LAS VEGAS METRO PD	3/24/2010	SIMPLE ASSAULT	HIGHWAY/ROAD	ANTI-BLACK	INDIVIDUAL-01	WHITE-04
4	LAS VEGAS METRO PD	3/26/2010	DESTRUCTION/DAMAGE/VANDALISM	RESIDENCE/HOME	ANTI-HISPANIC	INDIVIDUAL-01	UNKNOWN-00
5	LAS VEGAS METRO PD	3/30/2010	INTIMIDATION	HIGHWAY/ROAD	ANTI-FEMALE HOMOSEXUAL	INDIVIDUAL,SOCIETY/PUBLIC-01	WHITE-01
6	UNLVPD	3/17/2010	SIMPLE ASSAULT	SCHOOL/COLLEGE	ANTI-ISLAMIC(MUSLIM)	RELIGIOUS/ORGANIZATION-01	WHITE-02

Stolen/Recovered Property Report

March 2010

Property Type	Boulder PD	Carlin PD	Carson SO	Churchill SO	Clark Co Schl PD	Douglas SO	Elko PD	Elko SO	Esmeralda SO
Currency									
Stolen	\$0	\$805	\$4,900	\$60	\$1,015	\$25,659	\$3,280	\$0	\$0
Recovered	\$0	\$95	\$40	\$0	\$176	\$0	\$0	\$0	\$0
% Recovered	0.0%	11.8%	0.8%	0.0%	17.3%	0.0%	0.0%	0.0%	0.0%
Jewelry									
Stolen	\$1,890	\$0	\$20,356	\$0	\$1,500	\$8,696	\$16,809	\$0	\$0
Recovered	\$0	\$0	\$31	\$0	\$0	\$8	\$0	\$0	\$0
% Recovered	0.0%	0.0%	0.2%	0.0%	0.0%	0.1%	0.0%	0.0%	0.0%
Clothing									
Stolen	\$0	\$40	\$906	\$0	\$354	\$630	\$840	\$0	\$0
Recovered	\$0	\$40	\$325	\$0	\$0	\$0	\$0	\$0	\$0
% Recovered	0.0%	100.0%	35.9%	0.0%	0.0%	0.0%	0.0%	0.0%	0.0%
Motor Vehicle									
Stolen	\$13,000	\$0	\$107,500	\$9,300	\$0	\$22,500	\$16,500	\$0	\$0
Recovered	\$8,000	\$0	\$17,601	\$0	\$0	\$19,500	\$5,000	\$0	\$0
% Recovered	61.5%	0.0%	16.4%	0.0%	0.0%	86.7%	30.3%	0.0%	0.0%
Office Equipment									
Stolen	\$0	\$350	\$4,232	\$268	\$75,674	\$0	\$678	\$0	\$0
Recovered	\$0	\$0	\$34	\$0	\$50	\$0	\$200	\$0	\$0
% Recovered	0.0%	0.0%	0.8%	0.0%	0.1%	0.0%	29.5%	0.0%	0.0%
TV, VCR, Camera, Etc.									
Stolen	\$2,800	\$150	\$2,922	\$717	\$3,582	\$4,158	\$24,875	\$1,999	\$0
Recovered	\$0	\$0	\$40	\$0	\$250	\$88	\$0	\$0	\$0
% Recovered	0.0%	0.0%	1.4%	0.0%	7.0%	2.1%	0.0%	0.0%	0.0%
Firearm									
Stolen	\$2,969	\$0	\$3,039	\$0	\$0	\$1,050	\$5,840	\$0	\$0
Recovered	\$0	\$0	\$0	\$80	\$0	\$0	\$0	\$0	\$0
% Recovered	0.0%	0.0%	0.0%	0.0%	0.0%	0.0%	0.0%	0.0%	0.0%
Household Goods									
Stolen	\$2,000	\$0	\$0	\$0	\$0	\$7,012	\$7,494	\$0	\$0
Recovered	\$0	\$0	\$0	\$0	\$0	\$0	\$0	\$0	\$0
% Recovered	0.0%	0.0%	0.0%	0.0%	0.0%	0.0%	0.0%	0.0%	0.0%
Consumable Goods									
Stolen	\$0	\$10	\$37	\$80	\$62	\$638	\$573	\$0	\$0
Recovered	\$0	\$0	\$17	\$0	\$0	\$11	\$78	\$0	\$0
% Recovered	0.0%	0.0%	45.9%	0.0%	0.0%	1.7%	13.6%	0.0%	0.0%
Livestock									
Stolen	\$0	\$0	\$0	\$0	\$25	\$0	\$0	\$0	\$0
Recovered	\$0	\$0	\$0	\$0	\$0	\$0	\$0	\$0	\$0
% Recovered	0.0%	0.0%	0.0%	0.0%	0.0%	0.0%	0.0%	0.0%	0.0%
Misc.									
Stolen	\$12,043	\$0	\$28,128	\$764	\$60,718	\$33,332	\$41,476	\$0	\$0
Recovered	\$2,746	\$0	\$309	\$40	\$3,782	\$1,943	\$164	\$0	\$0
% Recovered	22.8%	0.0%	1.1%	5.2%	6.2%	5.8%	0.4%	0.0%	0.0%
TOTALS									
Stolen	\$34,702	\$1,355	\$172,020	\$11,189	\$142,930	\$103,675	\$118,365	\$1,999	\$0
Recovered	\$10,746	\$135	\$18,397	\$120	\$4,258	\$21,550	\$5,442	\$0	\$0
% Recovered	31.0%	10.0%	10.7%	1.1%	3.0%	20.8%	4.6%	0.0%	0.0%

Stolen/Recovered Property Report

March 2010

Property Type	Eureka SO	Fallon PD	Henderson PD	Humboldt SO	Lander SO	Las Vegas Metro	Lincoln SO	Lovelock PD	Lyon SO
Currency									
Stolen	\$0	\$0	\$74,507	\$0	\$0	\$902,889	\$0	\$0	\$991
Recovered	\$0	\$0	\$5,403	\$0	\$0	\$24,908	\$0	\$0	\$0
% Recovered	0.0%	0.0%	7.3%	0.0%	0.0%	2.8%	0.0%	0.0%	0.0%
Jewelry									
Stolen	\$0	\$0	\$227,583	\$0	\$0	\$1,363,482	\$0	\$0	\$925
Recovered	\$0	\$0	\$5,784	\$0	\$0	\$48,815	\$0	\$0	\$0
% Recovered	0.0%	0.0%	2.5%	0.0%	0.0%	3.6%	0.0%	0.0%	0.0%
Clothing									
Stolen	\$0	\$50	\$75,871	\$0	\$0	\$270,992	\$0	\$0	\$0
Recovered	\$0	\$50	\$7,096	\$0	\$0	\$29,141	\$0	\$0	\$0
% Recovered	0.0%	100.0%	9.4%	0.0%	0.0%	10.8%	0.0%	0.0%	0.0%
Motor Vehicle									
Stolen	\$0	\$2,000	\$477,850	\$0	\$23,650	\$692,435	\$0	\$0	\$48,615
Recovered	\$0	\$0	\$410,900	\$0	\$2,850	\$458,361	\$2,500	\$0	\$18,000
% Recovered	0.0%	0.0%	86.0%	0.0%	12.1%	66.2%	0.0%	0.0%	37.0%
Office Equipment									
Stolen	\$0	\$0	\$56,472	\$0	\$0	\$490,434	\$2,000	\$0	\$0
Recovered	\$0	\$0	\$3,010	\$0	\$0	\$19,070	\$0	\$0	\$0
% Recovered	0.0%	0.0%	5.3%	0.0%	0.0%	3.9%	0.0%	0.0%	0.0%
TV, VCR, Camera, Etc.									
Stolen	\$0	\$1,023	\$88,616	\$0	\$750	\$837,981	\$0	\$0	\$2,559
Recovered	\$0	\$0	\$7,170	\$0	\$0	\$32,010	\$0	\$0	\$45
% Recovered	0.0%	0.0%	8.1%	0.0%	0.0%	3.8%	0.0%	0.0%	1.8%
Firearm									
Stolen	\$0	\$0	\$10,785	\$0	\$0	\$68,230	\$0	\$0	\$250
Recovered	\$0	\$0	\$2,938	\$0	\$0	\$11,799	\$0	\$0	\$0
% Recovered	0.0%	0.0%	27.2%	0.0%	0.0%	17.3%	0.0%	0.0%	0.0%
Household Goods									
Stolen	\$0	\$1,090	\$87,736	\$0	\$0	\$381,069	\$37	\$0	\$0
Recovered	\$0	\$0	\$361	\$0	\$0	\$23,271	\$32	\$0	\$0
% Recovered	0.0%	0.0%	0.4%	0.0%	0.0%	6.1%	86.5%	0.0%	0.0%
Consumable Goods									
Stolen	\$0	\$0	\$38,904	\$0	\$74	\$215,533	\$0	\$0	\$137
Recovered	\$0	\$0	\$1,784	\$0	\$0	\$11,901	\$0	\$0	\$36
% Recovered	0.0%	0.0%	4.6%	0.0%	0.0%	5.5%	0.0%	0.0%	26.3%
Livestock									
Stolen	\$0	\$0	\$3,000	\$0	\$0	\$0	\$0	\$0	\$0
Recovered	\$0	\$0	\$0	\$0	\$0	\$0	\$0	\$0	\$0
% Recovered	0.0%	0.0%	0.0%	0.0%	0.0%	0.0%	0.0%	0.0%	0.0%
Misc.									
Stolen	\$0	\$2,224	\$290,791	\$1,030	\$2,733	\$1,246,526	\$90	\$60	\$51,837
Recovered	\$0	\$1,210	\$41,937	\$0	\$0	\$59,050	\$0	\$0	\$1,342
% Recovered	0.0%	54.4%	14.4%	0.0%	0.0%	4.7%	0.0%	0.0%	2.6%
TOTALS									
Stolen	\$0	\$6,387	\$1,432,115	\$1,030	\$27,207	\$6,469,571	\$2,127	\$60	\$105,314
Recovered	\$0	\$1,260	\$486,383	\$0	\$2,850	\$718,326	\$2,532	\$0	\$19,423
% Recovered	0.0%	19.7%	34.0%	0.0%	10.5%	11.1%	119.0%	0.0%	18.4%

Stolen/Recovered Property Report

March 2010

Property Type	Mesquite PD	Mineral SO	NLVPD	Nye SO	Pershing SO	Reno PD	Sparks PD	Storey SO	Taxicab	TMCC PD
Currency										
Stolen	\$18,857	\$162,000	\$50,127	\$23,519	\$230	\$125,980	\$11,209	\$0	\$302	\$35
Recovered	\$0	\$149,000	\$19	\$800	\$0	\$0	\$875	\$0	\$0	\$0
% Recovered	0.0%	92.0%	0.0%	3.4%	0.0%	0.0%	7.8%	0.0%	0.0%	0.0%
Jewelry										
Stolen	\$9,750	\$0	\$242,205	\$6,300	\$0	\$63,583	\$31,867	\$0	\$0	\$0
Recovered	\$0	\$0	\$897	\$750	\$0	\$36	\$1,310	\$0	\$0	\$0
% Recovered	0.0%	0.0%	0.4%	11.9%	0.0%	0.1%	4.1%	0.0%	0.0%	0.0%
Clothing										
Stolen	\$302	\$0	\$89,570	\$75	\$0	\$18,742	\$3,105	\$0	\$0	\$100
Recovered	\$17	\$0	\$1,087	\$0	\$0	\$3,971	\$1,570	\$0	\$0	\$0
% Recovered	5.6%	0.0%	1.2%	0.0%	0.0%	21.2%	50.6%	0.0%	0.0%	0.0%
Motor Vehicle										
Stolen	\$0	\$0	\$870,409	\$55,000	\$0	\$273,258	\$249,868	\$250,000	\$0	\$0
Recovered	\$2,500	\$0	\$763,300	\$11,000	\$0	\$141,590	\$104,368	\$250,000	\$0	\$0
% Recovered	0.0%	0.0%	87.7%	20.0%	0.0%	51.8%	41.8%	100.0%	0.0%	0.0%
Office Equipment										
Stolen	\$0	\$0	\$5,920	\$0	\$0	\$48,734	\$9,633	\$505	\$0	\$902
Recovered	\$0	\$0	\$0	\$0	\$0	\$1,459	\$5,640	\$155	\$0	\$0
% Recovered	0.0%	0.0%	0.0%	0.0%	0.0%	3.0%	58.5%	30.7%	0.0%	0.0%
TV, VCR, Camera, Etc.										
Stolen	\$1,850	\$129	\$251,457	\$25,680	\$0	\$48,851	\$35,986	\$0	\$1,000	\$529
Recovered	\$0	\$0	\$3,457	\$400	\$0	\$287	\$2,808	\$0	\$0	\$0
% Recovered	0.0%	0.0%	1.4%	1.6%	0.0%	0.6%	7.8%	0.0%	0.0%	0.0%
Firearm										
Stolen	\$8,650	\$0	\$5,620	\$1,136	\$0	\$8,215	\$7,250	\$0	\$0	\$0
Recovered	\$0	\$0	\$0	\$336	\$0	\$0	\$700	\$0	\$0	\$0
% Recovered	0.0%	0.0%	0.0%	29.6%	0.0%	0.0%	9.7%	0.0%	0.0%	0.0%
Household Goods										
Stolen	\$4,675	\$0	\$25,646	\$17,796	\$0	\$12,846	\$24,549	\$0	\$0	\$0
Recovered	\$0	\$0	\$20	\$1,291	\$0	\$0	\$2,056	\$0	\$0	\$0
% Recovered	0.0%	0.0%	0.1%	7.3%	0.0%	0.0%	8.4%	0.0%	0.0%	0.0%
Consumable Goods										
Stolen	\$333	\$0	\$70,066	\$1,010	\$0	\$1,025	\$1,697	\$0	\$0	\$0
Recovered	\$282	\$0	\$50,889	\$211	\$0	\$651	\$794	\$0	\$0	\$0
% Recovered	84.7%	0.0%	72.6%	20.9%	0.0%	63.5%	46.8%	0.0%	0.0%	0.0%
Livestock										
Stolen	\$0	\$0	\$0	\$500	\$7,398	\$0	\$0	\$0	\$0	\$0
Recovered	\$0	\$0	\$0	\$0	\$0	\$0	\$0	\$0	\$0	\$0
% Recovered	0.0%	0.0%	0.0%	0.0%	0.0%	0.0%	0.0%	0.0%	0.0%	0.0%
Misc.										
Stolen	\$15,713	\$0	\$1,199,218	\$46,307	\$0	\$186,985	\$22,375	\$0	\$1,350	\$450
Recovered	\$842	\$0	\$2,156	\$25	\$0	\$7,472	\$3,720	\$0	\$0	\$17
% Recovered	5.4%	0.0%	0.2%	0.1%	0.0%	4.0%	16.6%	0.0%	0.0%	3.8%
TOTALS										
Stolen	\$60,130	\$162,129	\$2,810,238	\$177,323	\$7,628	\$788,219	\$397,539	\$250,505	\$2,652	\$2,016
Recovered	\$3,641	\$149,000	\$821,825	\$14,813	\$0	\$155,466	\$123,841	\$250,155	\$0	\$17
% Recovered	6.1%	91.9%	29.2%	8.4%	0.0%	19.7%	31.2%	99.9%	0.0%	0.8%

Stolen/Recovered Property Report

March 2010

Property Type	UNLV PD	UNR PD	Washoe SO	Washoe Co Schl PD	Wendover PD	White Pine SO	Winnemucca PD	Yerington PD	Total By Property
Currency									
Stolen	\$330	\$226	\$13,341	\$0	\$1,700	\$1,047	\$20	\$0	\$1,423,029
Recovered	\$0	\$0	\$0	\$0	\$0	\$0	\$0	\$0	\$181,316
% Recovered	0.0%	0.0%	0.0%	0.0%	0.0%	0.0%	0.0%	0.0%	12.7%
Jewelry									
Stolen	\$100	\$0	\$85,990	\$0	\$0	\$0	\$0	\$0	\$2,081,036
Recovered	\$0	\$0	\$0	\$0	\$0	\$0	\$0	\$0	\$57,631
% Recovered	0.0%	0.0%	0.0%	0.0%	0.0%	0.0%	0.0%	0.0%	2.8%
Clothing									
Stolen	\$305	\$0	\$6,748	\$930	\$0	\$0	\$0	\$0	\$469,560
Recovered	\$0	\$0	\$0	\$0	\$0	\$0	\$0	\$0	\$43,297
% Recovered	0.0%	0.0%	0.0%	0.0%	0.0%	0.0%	0.0%	0.0%	9.2%
Motor Vehicle									
Stolen	\$7,000	\$25,000	\$35,995	\$0	\$0	\$2,500	\$0	\$0	\$3,182,380
Recovered	\$4,000	\$25,000	\$4,500	\$0	\$0	\$2,500	\$0	\$0	\$2,251,470
% Recovered	57.1%	100.0%	12.5%	0.0%	0.0%	100.0%	0.0%	0.0%	70.7%
Office Equipment									
Stolen	\$610	\$539	\$10,141	\$0	\$0	\$0	\$0	\$0	\$707,092
Recovered	\$0	\$0	\$0	\$0	\$0	\$0	\$0	\$0	\$29,618
% Recovered	0.0%	0.0%	0.0%	0.0%	0.0%	0.0%	0.0%	0.0%	4.2%
TV, VCR, Camera, Etc.									
Stolen	\$39,060	\$0	\$8,472	\$4,690	\$0	\$974	\$700	\$0	\$1,391,510
Recovered	\$0	\$0	\$0	\$229	\$0	\$0	\$700	\$0	\$47,484
% Recovered	0.0%	0.0%	0.0%	4.9%	0.0%	0.0%	100.0%	0.0%	3.4%
Firearm									
Stolen	\$0	\$0	\$8,550	\$0	\$0	\$0	\$0	\$0	\$131,584
Recovered	\$0	\$0	\$0	\$0	\$0	\$0	\$0	\$0	\$15,853
% Recovered	0.0%	0.0%	0.0%	0.0%	0.0%	0.0%	0.0%	0.0%	12.0%
Household Goods									
Stolen	\$0	\$0	\$4,500	\$84	\$0	\$0	\$27	\$0	\$576,561
Recovered	\$0	\$0	\$0	\$9	\$0	\$0	\$27	\$0	\$27,067
% Recovered	0.0%	0.0%	0.0%	10.7%	0.0%	0.0%	100.0%	0.0%	4.7%
Consumable Goods									
Stolen	\$270	\$0	\$6	\$52	\$0	\$342	\$68	\$0	\$330,917
Recovered	\$0	\$0	\$6	\$36	\$0	\$0	\$36	\$0	\$66,732
% Recovered	0.0%	0.0%	100.0%	69.2%	0.0%	0.0%	52.9%	0.0%	20.2%
Livestock									
Stolen	\$0	\$0	\$0	\$0	\$0	\$0	\$0	\$0	\$10,923
Recovered	\$0	\$0	\$0	\$0	\$0	\$0	\$0	\$0	\$0
% Recovered	0.0%	0.0%	0.0%	0.0%	0.0%	0.0%	0.0%	0.0%	0.0%
Misc.									
Stolen	\$13,741	\$10,793	\$43,369	\$0	\$800	\$600	\$2,291	\$0	\$3,315,744
Recovered	\$0	\$700	\$48	\$0	\$0	\$0	\$2,263	\$0	\$129,766
% Recovered	0.0%	6.5%	0.1%	0.0%	0.0%	0.0%	98.8%	0.0%	3.9%
TOTALS									
Stolen	\$61,416	\$36,558	\$217,112	\$5,756	\$2,500	\$5,463	\$3,106	\$0	\$13,620,336
Recovered	\$4,000	\$25,700	\$4,554	\$274	\$0	\$2,500	\$3,026	\$0	\$2,850,234
% Recovered	6.5%	70.3%	2.1%	4.8%	0.0%	45.8%	97.4%	0.0%	20.9%

Nevada--Assaults on Officers by Agency--UCR

March 2010

Agency	March 2010 Offenses	March 2010 Cleared	2010 YTD Offenses	2010 YTD Cleared	March 2009 Offenses	March 2009 Cleared	2009 YTD Offenses	2009 YTD Cleared
Boulder	0	0	0	0	0	0	0	0
Carlin PD	0	0	1	0	0	0	0	0
Carson SO	1	1	4	4	2	2	7	7
Churchill SO	0	0	2	2	0	0	0	0
ClrkSchIDst PD	4	4	17	17	5	5	8	8
Douglas SO	0	0	5	5	1	1	2	1
Elko PD	4	4	7	7	0	0	1	1
Elko SO	0	0	0	0	0	0	0	0
Esmeralda SO	0	0	0	0	0	0	0	0
Eureka SO	0	0	0	0	0	0	0	0
Fallon PD	0	0	0	0	0	0	1	0
Henderson PD	2	2	14	14	6	4	8	6
Highway Patrol	0	0	0	0	0	0	6	6
Humboldt SO	0	0	0	0	0	0	0	0
Lander SO	0	0	0	0	0	0	0	0
Lincoln SO	0	0	0	0	0	0	3	3
Lovelock PD	0	0	0	0	0	0	0	0
LV Fire Dept	0	0	0	0	0	0	0	0
LV Metro	12	12	25	25	18	18	55	55
Lyon SO	2	2	3	2	0	0	4	4
Mesquite PD	0	0	0	0	0	0	2	2
Mineral SO	0	0	0	0	0	0	1	1
NV Div Investigations	0	0	0	0	0	0	0	0
NLVPD	13	13	41	40	7	6	25	23
Nye SO	1	1	10	10	1	0	2	0
Pershing SO	0	0	0	0	0	0	0	0
Reno PD	2	2	10	10	5	5	11	11
Sparks PD	4	0	5	0	0	0	3	0
Storey SO	0	0	2	2	1	1	1	1
Taxicab Authority	0	0	0	0	0	0	0	0
TMCC PD	0	0	0	0	0	0	0	0
UNLV PD	1	1	2	2	0	0	1	1
UNR PD	0	0	0	0	0	0	0	0
Washoe SO	0	0	0	0	2	0	5	0
Washoe Co Schl PD	0	0	0	0	0	0	0	0
Wendover PD	0	0	0	0	0	0	0	0
White Pine SO	0	0	0	0	0	0	0	0
Winnemucca PD	0	0	0	0	0	0	1	1
Yerington PD	0	0	0	0	0	0	0	0
TOTALS	46	42	148	140	48	42	147	131

Nevada -- Assaults by Agency/Weapon/Assignment -- UCR

March 2010

Agency	Total Assaults	Number Cleared	Firearm	Knife / Cutting Device	Other Danger. Weapon	Hands, Fists, Feet, Etc.	2-Officer Vehicle	1-Officer Vehicle- Alone	1-Officer Vehicle- Assisted	Det./Spec. Assign. - Alone	Det./Spec. Assign. - Assisted	Other- Alone	Other- Assisted
Boulder City PD	0	0	0	0	0	0	0	0	0	0	0	0	0
Carlin PD	0	0	0	0	0	0	0	0	0	0	0	0	0
Carson City SO	1	1	0	0	0	1	0	0	1	0	0	0	0
Churchill Co SO	0	0	0	0	0	0	0	0	0	0	0	0	0
Clark School Dist PD	4	4	0	0	0	4	0	1	0	0	0	1	2
Douglas Co SO	0	0	0	0	0	0	0	0	0	0	0	0	0
Elko PD	4	4	0	0	0	4	0	0	4	0	0	0	0
Elko Co SO	0	0	0	0	0	0	0	0	0	0	0	0	0
Esmeralda Co SO	0	0	0	0	0	0	0	0	0	0	0	0	0
Eureka Co SO	0	0	0	0	0	0	0	0	0	0	0	0	0
Fallon PD	0	0	0	0	0	0	0	0	0	0	0	0	0
Henderson PD	2	2	0	0	0	2	1	1	0	0	0	0	0
NV Highway Patrol	0	0	0	0	0	0	0	0	0	0	0	0	0
Humboldt Co SO	0	0	0	0	0	0	0	0	0	0	0	0	0
Lander Co SO	0	0	0	0	0	0	0	0	0	0	0	0	0
Lincoln Co SO	0	0	0	0	0	0	0	0	0	0	0	0	0
Lovelock PD	0	0	0	0	0	0	0	0	0	0	0	0	0
Las Vegas Fire Dept	0	0	0	0	0	0	0	0	0	0	0	0	0
Las Vegas Metro PD	12	12	4	0	6	2	1	4	7	0	0	0	0
Lyon Co SO	2	2	0	1	0	1	0	0	2	0	0	0	0
Mesquite PD	0	0	0	0	0	0	0	0	0	0	0	0	0
Mineral Co SO	0	0	0	0	0	0	0	0	0	0	0	0	0
NV Div of Investigations	0	0	0	0	0	0	0	0	0	0	0	0	0
North Las Vegas PD	13	13	0	0	0	13	5	1	7	0	0	0	0
Nye Co SO	1	1	0	0	0	1	0	1	0	0	0	0	0
Pershing Co SO	0	0	0	0	0	0	0	0	0	0	0	0	0
Reno PD	2	2	0	0	1	1	1	1	0	0	0	0	0
Sparks PD	4	0	0	0	0	4	0	1	3	0	0	0	0
Storey Co SO	0	0	0	0	0	0	0	0	0	0	0	0	0
Taxi Authority	0	0	0	0	0	0	0	0	0	0	0	0	0
TMCC PD	0	0	0	0	0	0	0	0	0	0	0	0	0
UNLV PD	1	1	0	0	0	1	0	0	1	0	0	0	0
UNR PD	0	0	0	0	0	0	0	0	0	0	0	0	0
Washoe Co SO	0	0	0	0	0	0	0	0	0	0	0	0	0
Washoe Co School PD	0	0	0	0	0	0	0	0	0	0	0	0	0
West Westwendover PD	0	0	0	0	0	0	0	0	0	0	0	0	0
White Pine Co SO	0	0	0	0	0	0	0	0	0	0	0	0	0
Winnemucca PD	0	0	0	0	0	0	0	0	0	0	0	0	0
Yerington PD	0	0	0	0	0	0	0	0	0	0	0	0	0
TOTALS	46	42	4	1	7	34	8	10	25	0	0	1	2

Nevada -- Officer Assaults by Activity/Weapon/Assignment -- UCR

March 2010

ACTIVITY TYPE	Total Assaults	Number Cleared	Firearm	Knife / Cutting Device	Other Danger. Weapon	Hands, Fists, Feet, Etc.	2-Officer Vehicle	1-Officer Vehicle- Alone	1-Officer Vehicle- Assisted	Det./Spec. Assign.-Alone	Det./Spec. Assign.- Assisted	Other- Alone	Other- Assisted
DOMESTIC / OTHER DISTURBANCE	20	18	2	0	1	17	2	5	11	0	0	1	1
BURGLARY IN PROGRESS	1	1	1	0	0	0	0	0	1	0	0	0	0
ROBBERY IN PROGRESS	0	0	0	0	0	0	0	0	0	0	0	0	0
ATTEMPTING OTHER ARREST	6	6	0	0	0	6	3	0	3	0	0	0	0
CIVIL DISORDER	0	0	0	0	0	0	0	0	0	0	0	0	0
HANDLING PRISONER	4	4	0	0	1	3	2	1	1	0	0	0	0
INVEST. SUSP. PERSONS / CIRCUM.	1	1	0	0	0	1	0	0	0	0	0	0	1
AMBUSH-NO WARNING	0	0	0	0	0	0	0	0	0	0	0	0	0
MENTALLY DERANGED	1	1	0	1	0	0	0	0	1	0	0	0	0
TRAFFIC PURSUITS / STOPS	4	4	1	0	3	0	1	1	2	0	0	0	0
ALL OTHER	9	7	0	0	2	7	0	3	6	0	0	0	0
TOTALS	46	42	4	1	7	34	8	10	25	0	0	1	2

Nevada--Assaults with Injury/without Injury--UCR

March 2010

Agency	Total Assaults by weapon	Firearm		Knife or Other Cutting Instruments		Other Dangerous weapons		Hands, Fists, Feet, Etc.			
		With personal injury	Without personal injury	With personal injury	Without personal injury	With personal injury	Without personal injury	With personal injury	Without personal injury		
Boulder City PD	0	0	0	0	0	0	0	0	0		
Carlin PD	0	0	0	0	0	0	0	0	0		
Carson City SO	1	0	1	0	0	0	0	0	1		
Churchill Co SO	0	0	0	0	0	0	0	0	0		
Clark Co Schl Dist PD	4	2	2	0	0	0	0	2	2		
Douglas Co SO	0	0	0	0	0	0	0	0	0		
Elko Co SO	0	0	0	0	0	0	0	0	0		
Elko PD	4	1	3	0	0	0	0	1	3		
Esmeralda Co SO	0	0	0	0	0	0	0	0	0		
Eureka Co SO	0	0	0	0	0	0	0	0	0		
Fallon PD	0	0	0	0	0	0	0	0	0		
Henderson PD	2	1	1	0	0	0	0	1	1		
NV Highway Patrol	0	0	0	0	0	0	0	0	0		
Humboldt Co SO	0	0	0	0	0	0	0	0	0		
Lander Co SO	0	0	0	0	0	0	0	0	0		
Las Vegas Metro PD	12	3	9	1	3	0	0	6	2		
Lincoln Co SO	0	0	0	0	0	0	0	0	0		
Lovelock PD	0	0	0	0	0	0	0	0	0		
Lyon Co SO	2	0	2	0	0	0	1	0	1		
Mesquite PD	0	0	0	0	0	0	0	0	0		
Mineral Co SO	0	0	0	0	0	0	0	0	0		
NV Div Investigations	0	0	0	0	0	0	0	0	0		
North Las Vegas PD	13	1	12	0	0	0	0	1	12		
Nye Co SO	1	0	1	0	0	0	0	0	1		
Pershing Co SO	0	0	0	0	0	0	0	0	0		
Reno PD	2	0	2	0	0	0	0	1	1		
Sparks PD	4	1	3	0	0	0	0	1	3		
Storey Co SO	0	0	0	0	0	0	0	0	0		
Taxicab Authority	0	0	0	0	0	0	0	0	0		
TMCC PD	0	0	0	0	0	0	0	0	0		
UNLV PD	1	1	0	0	0	0	0	1	0		
UNR PD	0	0	0	0	0	0	0	0	0		
Washoe Co SO	0	0	0	0	0	0	0	0	0		
Washoe Co School Dist.	0	0	0	0	0	0	0	0	0		
West Wendover PD	0	0	0	0	0	0	0	0	0		
White Pine Co SO	0	0	0	0	0	0	0	0	0		
Winnemucca PD	0	0	0	0	0	0	0	0	0		
Yerington PD	0	0	0	0	0	0	0	0	0		
Totals	46	10	36	1	3	0	1	0	7	9	25

Nevada--Time of Assaults on Officers--UCR

March 2010

Agency	12:01-2:00	2:00-4:00	4:00-6:00	6:00-8:00	8:00-10:00	10:00-12:00	12:01-2:00	2:00-4:00	4:00-6:00	6:00-8:00	8:00-10:00	10:00-12:00
	AM	AM	AM	AM	AM	AM	PM	PM	PM	PM	PM	PM
Boulder City PD	0	0	0	0	0	0	0	0	0	0	0	0
Carlin PD	0	0	0	0	0	0	0	0	0	0	0	0
Carson City SO	0	0	0	1	0	0	0	0	0	0	0	0
Churchill Co SO	0	0	0	0	0	0	0	0	0	0	0	0
Clark Co Schl Dist PD	0	0	0	0	1	2	1	0	0	0	0	0
Douglas Co SO	0	0	0	0	0	0	0	0	0	0	0	0
Elko Co SO	0	0	0	0	0	0	0	0	0	0	0	0
Elko PD	0	0	0	0	0	0	0	0	0	0	4	0
Esmeralda Co SO	0	0	0	0	0	0	0	0	0	0	0	0
Eureka Co SO	0	0	0	0	0	0	0	0	0	0	0	0
Fallon PD	0	0	0	0	0	0	0	0	0	0	0	0
Henderson PD	0	0	0	0	0	0	0	0	0	0	0	2
Highway Patrol	0	0	0	0	0	0	0	0	0	0	0	0
Humboldt Co SO	0	0	0	0	0	0	0	0	0	0	0	0
Lander Co SO	0	0	0	0	0	0	0	0	0	0	0	0
Las Vegas Metro PD	1	2	0	0	2	1	0	3	0	0	2	1
Lincoln Co SO	0	0	0	0	0	0	0	0	0	0	0	0
Lovelock PD	0	0	0	0	0	0	0	0	0	0	0	0
Lyon Co SO	0	0	0	0	0	0	1	1	0	0	0	0
Mesquite PD	0	0	0	0	0	0	0	0	0	0	0	0
Mineral Co SO	0	0	0	0	0	0	0	0	0	0	0	0
NV Div Investigations	0	0	0	0	0	0	0	0	0	0	0	0
North LV PD	0	4	1	0	1	0	0	2	1	2	0	2
Nye Co SO	0	0	0	0	0	0	0	0	0	1	0	0
Pershing Co SO	0	0	0	0	0	0	0	0	0	0	0	0
Reno PD	0	0	0	0	0	0	0	0	1	1	0	0
Sparks PD	0	1	0	0	1	0	0	0	1	1	0	0
Storey Co SO	0	0	0	0	0	0	0	0	0	0	0	0
Taxicab Authority	0	0	0	0	0	0	0	0	0	0	0	0
TMCC PD	0	0	0	0	0	0	0	0	0	0	0	0
UNLV PD	0	0	0	0	0	0	0	0	0	0	0	1
UNR PD	0	0	0	0	0	0	0	0	0	0	0	0
Washoe Co SO	0	0	0	0	0	0	0	0	0	0	0	0
Washoe Co Schl PD	0	0	0	0	0	0	0	0	0	0	0	0
West Wendover PD	0	0	0	0	0	0	0	0	0	0	0	0
White Pine Co SO	0	0	0	0	0	0	0	0	0	0	0	0
Winnemucca PD	0	0	0	0	0	0	0	0	0	0	0	0
Yerington PD	0	0	0	0	0	0	0	0	0	0	0	0
Totals	1	7	1	1	5	3	2	6	3	5	6	6

AGE, SEX, AND RACE OF PERSONS CHARGED

March 2010

18 Years of age and under

(Count all Offences even if the Arrest is based on only one charge)

CLASSIFICATION OF OFFENSES	SEX	AGE							Total Under 18	RACE				
		Under 10	10-12	13-14	15	16	17	White		Black	American Indian or Alaskan Native	Asian or Pacific Islander		
Murder and Nonnegligent Manslaughter	01a	Male						1	1					
		Female							0	1				
Manslaughter by Negligence	01b	Male							0					
		Female							0					
Forcible Rape	02	Male		1	2				3					
		Female							0	3				
Robbery	03	Male		1	3	3	3	4	14					
		Female			1	1	5	1	8	9	13			
Aggravated Assault (Return A-4a-d)	04	Male	1	5	13	6	8	8	41					
		Female		2	2	4	2	4	14	36	18			1
Burglary--Breaking or Entering	05	Male		5	11	9	13	8	46					
		Female		3	2		1	2	8	26	27	1		
Larceny--Theft (except Motor Vehicle Theft)	06	Male	1	18	56	36	41	41	193					
		Female		7	47	37	52	39	182	277	76	2		20
Motor Vehicle Theft	07	Male			1	2	3	3	9					
		Female							0	6	3			
Other Assaults (Return A-4e)	08	Male	3	20	44	25	41	21	154					
		Female		18	47	25	19	20	129	195	77	3		8
Arson	09	Male			6	1	2		9					
		Female							0	9				
Forgery & Counterfeiting	10	Male					1	1	2					
		Female							0	2				
Fraud	11	Male			1	3			4					
		Female					1	1	2	4	1			1
Embezzlement	12	Male							0					
		Female							0					
Stolen Property; Buying, Receiving, Possessing	13	Male			4	4	4	2	14					
		Female				2	1	2	5	14	4			1
Vandalism	14	Male		15	41	19	21	26	122					
		Female	1	3	4	1	1	2	12	115	16	1		2
Weapons; Carrying, Possessing, etc.	15	Male		4	11	3	4	6	28					
		Female		1				1	2	26	2			2
Prostitution and Commercialized Vice	16	Male							0					
		Female					1		1		1			
Sex Offenses (except Forcible Rape and Prostitution)	17	Male		3	5	3	3		14					
		Female		1					1	10	5			
Drug Abuse Violations	18	Male	0	7	54	42	36	53	192					
		Female	0	2	13	8	5	9	37	187	34	4		4
(1) Sale/Manufacturing Subtotal	180	Male	0	2	16	9	3	14	44					
		Female	0	0	3	0	0	1	4	40	3	4		1
Opium or Cocaine and Their Derivatives (Morphine, Heroin, Codeine)	a	Male						2	2					
		Female							0	2				
Marijuana	b	Male		1	10	4	1	11	27					
		Female							0	23	2	1		1
Synthetic Narcotics-Manufactured Narcotics Which Cause True Drug Addiction (Dem)	c	Male				1			1					
		Female			1			1	2	3				
Other Dangerous Non-Narcotic Drugs (Barbiturates, Benzadrine)	d	Male		1	6	4	2	1	14					
		Female			2				2	12	1	3		
(2) Possession - Subtotal	185	Male	0	5	38	33	33	39	148					
		Female	0	2	10	8	5	8	33	147	31	0		3
Opium or Cocaine and Their Derivatives (Morphine, Heroin, Codeine)	e	Male							0					
		Female							0					
Marijuana	f	Male		5	36	30	32	35	138					
		Female		2	9	6	5	7	29	135	29			3
Synthetic Narcotics-Manufactured Narcotics Which Cause True Drug Addiction (Dem)	g	Male						1	1					
		Female			1	2			3	3	1			
Other Dangerous Non-Narcotic Drugs (Barbiturates, Benzadrine)	h	Male			2	3	1	3	9					
		Female						1	1	9	1			

CLASSIFICATION OF OFFENSES	SEX	Under 10	10-12	13-14	15	16	17	Total Under 18	RACE				
									White	Black	American Indian or Alaskan Native	Asian or Pacific Islander	
Gambling Total	19	Male	0	0	0	0	0	0	0	0	0	0	0
		Female	0	0	0	0	0	0	0	0	0	0	0
Bookmaking (Horses and Sports Book)	a	Male						0					
		Female						0					
Numbers and Lottery	b	Male						0					
		Female						0					
All Other Gambling	c	Male						0					
		Female						0					
Offenses Against Family and Children	20	Male	1	2			2	5	8	1			
		Female			1	2	1	4					
Driving Under the Influence	21	Male					2	2					
		Female					0	0	2				
Liquor Laws	22	Male		1	15	17	24	38	95				
		Female			7	6	10	10	33	110	9	4	5
Drunkenness	23	Male		1			1	1	3				
		Female					1	1	4				
Disorderly Conduct	24	Male		9	25	21	17	12	84				
		Female		8	11	10	12	5	46	78	46	1	5
Vagrancy	25	Male			3	3	2	2	10				
		Female						0	6	4			
All Other Offenses (except Traffic) Total	26	Male	3	13	93	68	69	86	332				
		Female		11	25	26	39	27	128	339	105	7	9
Suspicion	27	Male						0					
		Female						0					
Curfew and Loitering Law Violatic	28	Male		4	23	29	38	48	142				
		Female		2	16	10	21	21	70	150	59		3
Runaway	29	Male		3	8	12	13	7	43				
		Female		3	10	15	20	16	64	93	7	2	5
GRAND TOTAL			10	169	606	454	537	533	2309	1710	508	25	66



Nevada UCR *Footnotes / Exceptions

March 2010

Table 1

--Nevada figures are annualized projections.

--"Assault" does not include simple assaults to allow direct comparison between the Nevada rate and the National rate for this Index offense. See Table 8 for a count of all assaults.

Table 2

--The LV Fire Department reports "Arson" offenses for the City of Las Vegas. The population figure for this agency represents jurisdiction and is not added to the county total. Similarly, the School District Police Departments in Clark and Washoe Counties are not added to county population estimates as they represent persons served (student enrollment plus staff.)

--Assault data in this table includes ALL assaults (aggravated and simple) reported for the current month.

--County crime rates are calculated following subtraction of populations of jurisdictions failing to report.

Table 3

-- In the "Nevada vs National Index Crime and Clearance Rates" sections, the "Assaults" numbers do not include simple assaults following FBI guidelines. Therefore, they may be compared directly to National rates.

-- National crime rate figures are the latest available for comparative use (2005). Nevada figures are annualized projections.

Table 13

--At various times, property values recovered will exceed values stolen for the current reporting period.

General Notes:

The following agencies were unable to submit reports for this month:

-- Any late reports not submitted in time for this publication will be incorporated in to the year-to-date totals in subsequent reports.