

Disclaimer: The following information is preliminary and cannot be certified until it is published in the annual report, Crime and Justice in Nevada, which will be available after July 1, 2005.

UNIFORM CRIME REPORTING PROGRAM
UCR STATISTICAL DATA VERIFICATION FORM

As an agency administrator or designee for the _____, I have
(Name of Agency)
reviewed the UCR monthly statistics for **September 2004** which includes all UCR data submitted year to date. Based upon my or my designee's review and validation of same, I find that:

All data contained in the report for my agency is accurate and complete and may be released and made part of UCR publications for future distribution to the public and other interested UCR data subscribers.

Data contained in the report is inaccurate or incomplete and may not be published or released at this time. (If this choice is selected, please provide the reason in the space provided below.)

Reason: _____

The corrected data will be supplied to the UCR Program by: _____.
(Date)

This document must be signed and mailed to the Uniform Crime Reporting Program, 808 W. Nye Lane, Carson City, Nevada 89703 or faxed to (775) 687-1843 by **March 31, 2005**.

Signature of Agency Administrator (or designee)

Name/Title of Agency Administrator (print or type)

Agency's Name/Location

Date

Department of Public Safety
Nevada Highway Patrol
Records and Identification Bureau

Monthly Report



September

2004

**George Togliatti, Director
Department of Public Safety**

**Colonel David Hosmer, Chief
Nevada Highway Patrol**

**Lt. Brian Sanchez, Manager
Records and Identification Bureau**

**Phyllis Yancey, Administrative Assistant II
Tenna Herman, Management Analyst I**

**Prepared by:
Records and Identification Bureau
Uniform Crime Reporting
808 W. Nye Lane
Carson City, Nevada 89703
(775) 687-1600**

Nevada UCR Definitions / Explanations

Uniform Crime Reporting Program

The UCR program is a nationwide, cooperative, statistical effort by over 17,000 city, county and state law enforcement agencies that voluntarily report data on crimes brought to their attention. Law enforcement agencies active in the national program represent 95% of the total population of the United States. While the program's primary objective is to generate a reliable set of crime statistics for use in law enforcement administration, operation and management, its data has over the years become one of the country's leading social indicators.

In Nevada, 36 agencies are currently reporting UCR data to the statewide program representing nearly 99% of its population. Rather than submitting directly to the FBI, local agencies must submit crime data to the state UCR Repository, which compiles, analyzes and submits copies of the reports to the FBI. The Nevada UCR Program prides itself on its responsiveness to local contributing agencies that previously received limited feedback for their efforts. The Nevada program is also responsible for producing and distributing periodic reports of the information contained in its database. As its database has grown, the program's utility has become even more apparent.

Eight offenses serve as an index for gauging fluctuations in overall volumes and rates of crime. Known collectively as the " Crime Index, " these offenses include *the violent crimes of murder, rape, robbery and assault and the property crimes of burglary, larceny, motor vehicle theft and arson*. These offenses were selected as a grouped measuring device because they represent the most common crime problems. They are all serious crimes; either by their very nature or due to the volume and frequency with which they occur.

Index Crimes Definitions

Murder and Non-negligent Manslaughter

Murder and non negligent manslaughter, as defined in the Uniform Crime Reporting Program, is the willful (non-negligent) killing of a human being by another.

The classification of this offense, as for all other Crime Index offenses, is based solely on police investigation as opposed to the determination of a court, medical examiner, coroner, jury or other judicial entity. Not included in the count for this offense classification are deaths caused by negligence, suicide or accident, justifiable homicides and attempts to murder or assaults to murder. These are scored as aggravated assaults.

Nevada UCR Definitions / Explanations

Forcible Rape

Forcible rape, as defined in the program, is the carnal knowledge of a female forcibly and against her will. Assaults or attempts to commit rape by force or threat of force are also included; however, statutory rape (without force) and other sex offenses are excluded.

Robbery

Robbery is the taking or attempting to take anything of value from the care, custody or control of a person or persons by force or threat of force or violence and/or by putting the victim in fear.

Aggravated Assault

Aggravated assault is an unlawful attack by one person upon another for the purpose of inflicting severe or aggravated bodily injury. This type of assault is usually accompanied by the use of a weapon or by means likely to produce death or great bodily harm. Attempts are included since it is not necessary that an injury result when a gun, knife or other weapon is used which could and probably would result in serious personal injury if the crime were successfully completed

Burglary

The Uniform Crime Reporting Program defines burglary as the unlawful entry of a structure to commit a felony or theft. The use of force to gain entry is not required to classify an offense as burglary. Burglary in this program is categorized into three sub classifications: forcible entry, unlawful entry where no force is used and attempted forcible entry.

Larceny-Theft

Larceny-theft is the unlawful taking, carrying, leading, or riding away of property from the possession or constructive possession of another. It includes crimes such as shoplifting, pocket picking, purse-snatching, thefts from motor vehicles, thefts of motor vehicle parts and accessories, and bicycle thefts, etc., in which no use of force, violence, or fraud occurs. In the UCR Program, this crime category does not include embezzlement, "con" games, forgery, and worthless checks. Motor vehicle theft is also excluded from this category inasmuch as it is a separate Crime Index offense.

Motor Vehicle Theft

Defined as the theft or attempted theft of a motor vehicle, this offense category includes the stealing of automobiles, trucks, buses, motorcycles, motor scooters, snowmobiles, etc. The definition excludes the taking of a motor vehicle for temporary use by those persons having lawful access.

Nevada UCR

Definitions / Explanations

Arson

Arson is defined by the Uniform Crime Reporting Program as any willful or malicious burning or attempt to burn, with or without intent to defraud, a dwelling house, public building, a motor vehicle or aircraft, personal property of another, etc. Only fires determined through investigation to have been willfully or maliciously set are classified as arsons. Fires of suspicious or unknown origins are excluded.

Population Estimates

State, county and incorporated city population estimates are prepared and reviewed prior to the end of each calendar year for certification by the governor by March 1. The Nevada Department of Taxation and Nevada State Demographer, Bureau of Business and Economic Research, College of Business Administration, University of Nevada, Reno, prepares these estimates.

Crime Rates

Crime rates involve the number of Index Crimes per unit of population, usually per 100,000 persons. Because Nevada has such a low population, a rate per 1,000 persons is used to reflect a more realistic volume. No attempt is made to incorporate transient populations or other factors that contribute to the ratio and types of crime in given areas. Any effort to make comparisons of crime rates between areas should be tempered by these population and environmental variables.

Crime rates are one of the most meaningful statistical elements. Computation of crime rates per 1,000 population is achieved by dividing the community's population by 1,000, then dividing the number of offenses in each class by that number. The answer is the number of offenses per 1,000 population and is the crime rate for that particular offense. In Table 2, the County Total Crime Rate is computed after subtracting the population figure for all non-reporting agencies for the current month.

The index offense "Aggravated Assault" is an item of special interest to users of Nevada's UCR report. In Tables 1 & 3, where Nevada and National crime rates are compared, "simple assaults" are subtracted from the total of all assaults following FBI UCR rules, thus allowing for direct comparison. However, total assaults (simple and aggravated) are also presented in the Nevada report. This is because the Nevada UCR staff believes this figure is an important indicator of risk for citizens and it presents a more balanced picture of this portion of the crime index to law enforcement personnel.

The Federal Bureau of Investigation, Uniform Crime Reporting Section, publishes national rates.

Clearance Rates

The percentage of crimes cleared is obtained by dividing the number of offenses cleared by the number of offenses known. This number is then multiplied by 100.

Nevada--Statewide Summary--UCR Index Crimes

SEPTEMBER 2004

Offense	Crimes this Month	# Cleared this Month	% Cleared this Month	Crimes this YTD	# Cleared this YTD	% Cleared this YTD	September Crimes 2003	September Cleared 2003	% September Cleared 2003	2004 NV Rate / 1,000 (Proj) *	2003 NV Rate / 1,000	2002 Natl. Rate / 1,000
Murder	19	13	68	135	90	67	10	5	50	0.08	0.09	0.56
Rape	65	16	25	691	169	24	74	26	35	0.40	0.39	0.32
Robbery	416	57	14	3,609	674	19	502	101	20	2.10	2.36	1.48
Assault *	808	242	30	6,333	2,244	35	693	276	40	3.68	3.41	3.19
Burglary	1,942	395	20	17,330	3,611	21	1,846	405	22	10.06	9.96	7.41
Larceny	4,140	937	23	39,529	9,246	23	4,638	1,207	26	22.95	24.17	24.85
MV Theft	1,947	217	11	16,710	2,017	12	1,566	240	15	9.70	9.45	4.31
Arson	49	8	16	532	58	11	40	4	10	0.31	0.26	0.35
Total	9,386	1,885	20	84,869	18,109	21	9,369	2,264	24	49.27	50.10	42.47

* The projected Crime Rate for Assaults is computed after subtracting Simple Assaults from the total for all Assaults following FBI guidelines. Therefore, this rate may be compared directly to the National Rate. See Table 3 and the "Footnotes/Exceptions page for further information.

Nevada UCR - - Monthly Crime/ Clearance Summary - - All Crimes

Contributing Agency	Est. Pop	Murder		Rape		Robbery		Assault		Burglary		Larceny		MV Theft		Arson		Total Crimes	Crime Rate	Clearances	Clearance Rate
Carson County																		SEPTEMBER 2004			
Carson SO	54,844	0	0	0	0	0	1	87	45	36	9	85	22	16	3	2	1	226	4.12	81	35.8%
County Total	54,844	0	0	0	0	0	1	87	45	36	9	85	22	16	3	2	1	226	4.12	81	35.8%
Churchill County																					
Churchill SO	16,939	1	1	0	0	0	0	37	21	13	5	14	8	0	0	0	0	65	3.84	35	53.8%
Fallon PD	8,178	0	0	0	0	2	1	24	24	2	3	30	9	1	1	1	0	60	7.34	38	63.3%
County Total	25,117	1	1	0	0	2	1	61	45	15	8	44	17	1	1	1	0	125	4.98	73	58.4%
Clark County																					
Boulder PD	14,842	0	0	0	0	0	0	1	0	18	2	13	0	2	0	0	0	34	2.29	2	5.9%
Clark Co. Schools PD*	284,512	0	0	1	0	4	3	73	43	38	2	79	7	1	0	3	1	199	0.70	56	28.1%
Henderson	209,486	1	1	2	2	11	3	234	124	141	21	273	51	122	3	1	0	785	3.75	205	26.1%
LV Metro PD	1,176,146	12	8	42	8	325	29	2,280	358	1,153	273	2,253	537	1,384	147	19	0	7,468	6.35	1,360	18.2%
LV Fire Dept*																5	0	5	N/A	0	0.0%
Mesquite	13,216	0	0	0	0	0	0	16	12	0	0	21	8	2	0	0	0	39	2.95	20	51.3%
North Las Vegas PD	135,967	3	1	6	1	30	8	234	128	139	9	237	55	166	9	1	0	816	6.00	211	25.9%
UNLV PD*	26,345	0	0	0	0	1	0	3	3	10	0	16	1	1	0	0	0	31	1.18	4	12.9%
County Total	1,549,657	16	10	51	11	371	43	2,841	668	1,499	307	2,892	659	1,678	159	29	1	9,377	6.05	1,858	19.8%
Douglas County																					
Douglas SO	44,212	0	0	0	0	3	2	60	40	30	3	92	16	14	8	2	2	201	4.55	71	35.3%
County Total	44,212	0	0	0	0	3	2	60	40	30	3	92	16	14	8	2	2	201	4.55	71	35.3%

*Population figure not included in county total
Table 2

Nevada UCR - - Monthly Crime/ Clearance Summary - - All Crimes

Contributing Agency	Est. Pop	Murder		Rape		Robbery		Assault		Burglary		Larceny		MV Theft		Arson		Total Crimes	Crime Rate	Clearances	Clearance Rate
Elko County																	SEPTEMBER 2004				
Elko SO	23,153	0	0	1	0	0	0	5	1	9	2	7	3	2	2	2	0	26	1.12	8	30.8%
Carlin PD	2,074	0	0	0	0	0	0	3	3	2	0	1	1	2	1	0	0	8	3.86	5	62.5%
Elko PD	16,690	1	1	0	0	0	0	13	6	6	0	31	3	2	0	0	0	53	3.18	10	18.9%
WestWendover PD	4,661	0	0	0	0	0	0	6	5	1	0	9	4	0	0	0	0	16	3.43	9	56.3%
County Total	46,578	1	1	1	0	0	0	27	15	18	2	48	11	6	3	2	0	103	2.21	32	31.1%
Esmeralda County																					
Esmeralda SO	1,125	0	0	0	0	0	0	0	0	0	0	0	0	0	0	0	0	0	0.00	0	0.0%
County Total	1,125	0	0	0	0	0	0	0	0	0	0	0	0	0	0	0	0	0	0.00	0	0.0%
Eureka County																					
Eureka SO	1,384	0	0	0	0	0	0	5	4	1	0	1	0	0	0	0	0	7	5.06	4	57.1%
County Total	1,384	0	0	0	0	0	0	5	4	1	0	1	0	0	0	0	0	7	5.06	4	57.1%
Humboldt County																					
Humboldt SO	9,074	0	0	0	0	0	0	3	3	5	4	3	3	0	0	0	0	11	1.21	10	90.9%
Winnemucca PD	7,234	0	0	1	0	0	0	9	9	4	1	4	1	2	2	0	0	20	2.76	13	65.0%
County Total	16,308	0	0	1	0	0	0	12	12	9	5	7	4	2	2	0	0	31	1.90	23	74.2%

*Population figure not included in county total
Table 2

Nevada UCR - - Monthly Crime/ Clearance Summary - - All Crimes

Contributing Agency	Est. Pop	Murder		Rape		Robbery		Assault		Burglary		Larceny		MV Theft		Arson		Total Crimes	Crime Rate	Clearances	Clearance Rate
Lander County																		SEPTEMBER 2004			
Lander SO	5,547	0	0	0	0	0	0	4	2	1	0	3	1	2	0	0	0	10	1.80	3	30.0%
County Total	5,547	0	0	0	0	0	0	4	2	1	0	3	1	2	0	0	0	10	1.80	3	30.0%
Lincoln County																					
Lincoln SO	3,879	0	0	0	0	0	0	7	4	1	0	1	0	1	2	0	0	10	2.58	6	60.0%
County Total	3,879	0	0	0	0	0	0	7	4	1	0	1	0	1	2	0	0	10	2.58	6	60.0%
Lyon County																					
Lyon SO	35,917	0	0	1	2	0	0	59	57	25	5	40	8	12	8	1	1	138	3.84	81	58.7%
Yerington PD	2,859	0	0	0	0	0	0	8	7	0	0	2	0	0	0	0	0	10	3.50	7	70.0%
County Total	38,776	0	0	1	2	0	0	67	64	25	5	42	8	12	8	1	1	148	3.82	88	59.5%
Mineral County																					
Mineral SO	4,695	0	0	0	0	0	0	2	2	3	0	1	1	0	0	0	0	6	1.28	3	50.0%
County Total	4,695	0	0	0	0	0	0	2	2	3	0	1	1	0	0	0	0	6	1.28	3	50.0%
Nye County																					
Nye SO	35,039	0	0	0	0	1	0	58	58	51	26	49	25	6	4	0	0	165	4.71	113	68.5%
County Total	35,039	0	0	0	0	1	0	58	58	51	26	49	25	6	4	0	0	165	4.71	113	68.5%

*Population figure not included in county total
Table 2

Nevada UCR - - Monthly Crime/ Clearance Summary - - All Crimes

Contributing Agency	Est. Pop	Murder		Rape		Robbery		Assault		Burglary		Larceny		MV Theft		Arson		Total Crimes	Crime Rate	Clearances	Clearance Rate
Pershing County																		SEPTEMBER 2004			
Pershing SO	4,670	0	0	-1	0	1	0	7	4	3	0	6	3	0	1	0	0	16	3.43	8	50.0%
Lovelock PD	2,267	0	0	2	1	0	0	4	2	3	0	1	0	0	0	0	0	10	4.41	3	30.0%
County Total	6,937	0	0	1	1	1	0	11	6	6	0	7	3	0	1	0	0	26	3.75	11	42.3%
Storey County																					
Storey	3,639	0	0	0	0	1	0	2	3	4	1	2	1	0	0	0	0	9	2.47	5	55.6%
County Total	3,639	0	0	0	0	1	0	2	3	4	1	2	1	0	0	0	0	9	2.47	5	55.6%
Washoe County																					
Washoe SO	96,334	0	0	0	0	1	0	81	42	43	4	63	6	10	0	1	1	199	2.07	53	26.6%
Reno PD	187,834	1	0	7	3	25	7	425	211	133	15	556	123	156	21	9	1	1,312	6.98	381	29.0%
Sparks PD	75,255	0	1	2	-1	11	3	105	79	58	9	190	33	40	3	2	1	408	5.42	128	31.4%
UNR PD*	15,000	0	0	1	0	0	0	2	1	1	0	17	0	2	1	0	0	23	1.53	2	8.7%
Washoe Co Schi PD*	66,515	0	0	0	0	0	0	0	0	3	1	24	2	0	0	0	0	27	0.41	3	11.1%
TMCC PD*	11,878	0	0	0	0	0	0	0	0	2	0	0	0	0	0	0	0	2	0.17	0	0.0%
County Total	359,423	1	1	10	2	37	10	613	333	240	29	850	164	208	25	12	3	1,971	5.48	567	28.8%
White Pine County																					
White Pine SO	8,863	0	0	0	0	0	0	13	13	3	0	16	5	1	1	0	0	33	3.72	19	57.6%
County Total	8,863	0	0	0	0	0	0	13	13	3	0	16	5	1	1	0	0	33	3.72	19	57.6%
Grand Total	2,206,023	19	13	65	16	416	57	3,870	1,314	1,942	395	4,140	937	1,947	217	49	8	12,448	5.64	2,957	23.8%

*Population figure not included in county total
Table 2

Nevada UCR - - **Monthly Crimes/Clearances Summary** - - Index Crimes

SEPTEMBER 2004

Est. Pop	Murder		Rape		Robbery		Assault		Burglary		Larceny		MV Theft		Arson		Total Crimes	Crime Rate	Total Clear	Clearance Rate	
Statewide Totals																					
(Crimes/Clearances)	2,296,563	19	13	65	16	416	57	808	242	1942	395	4140	937	1947	217	49	8	9386	4.09	1885	20.08

Nevada (Projected 2004) vs National (2002) Index Crime Rates

(per 1,000 population)

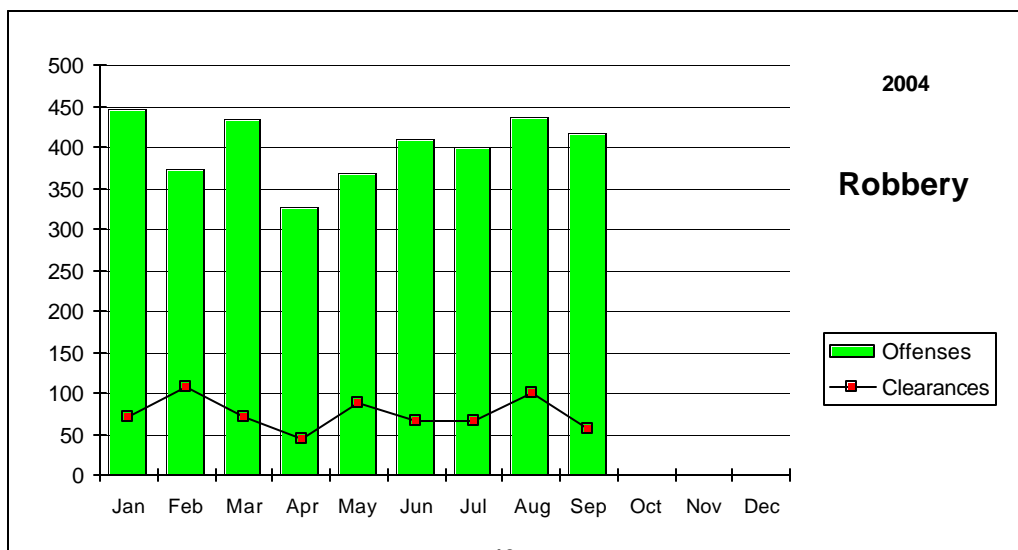
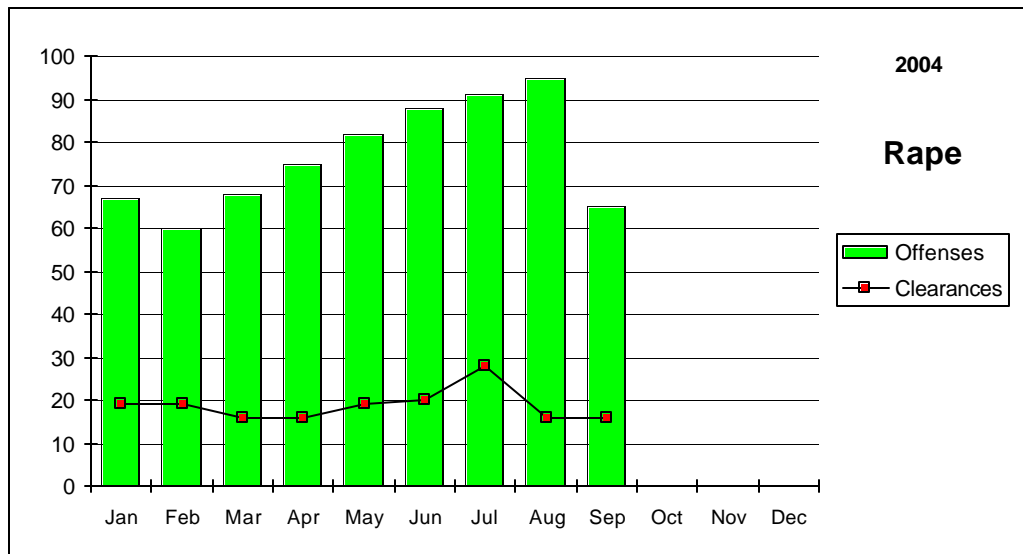
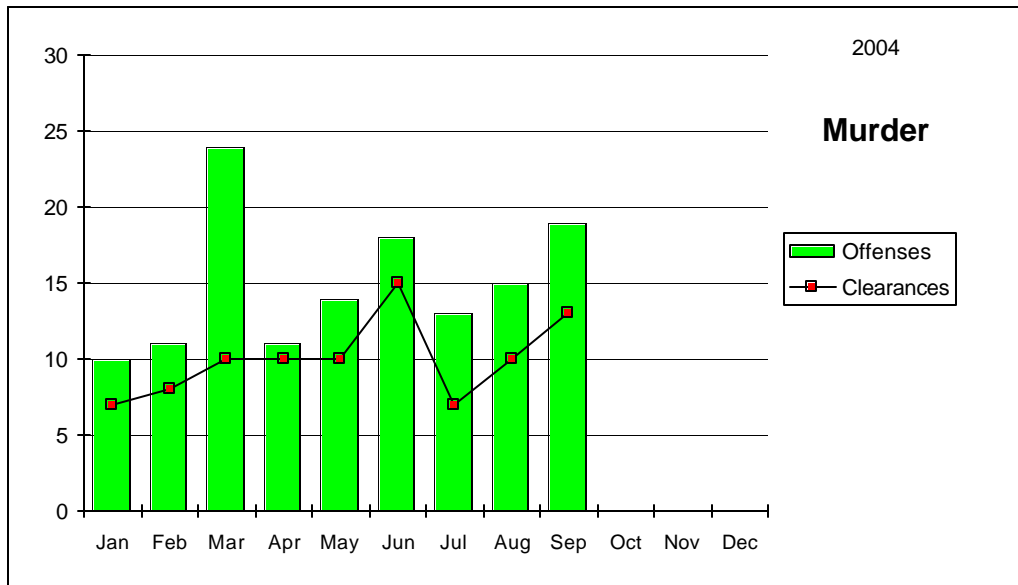
	Murder	Rape	Robbery	Assault	Burglary	Larceny	MV Theft	Arson	Crime Rate
Nevada	0.08	0.40	2.10	3.68	10.06	22.95	9.70	0.31	49.27
National	0.56	0.32	1.48	3.19	7.41	24.85	4.31	0.35	41.85

Nevada (Projected 2004) vs National (2002) Crime Clearance Rates

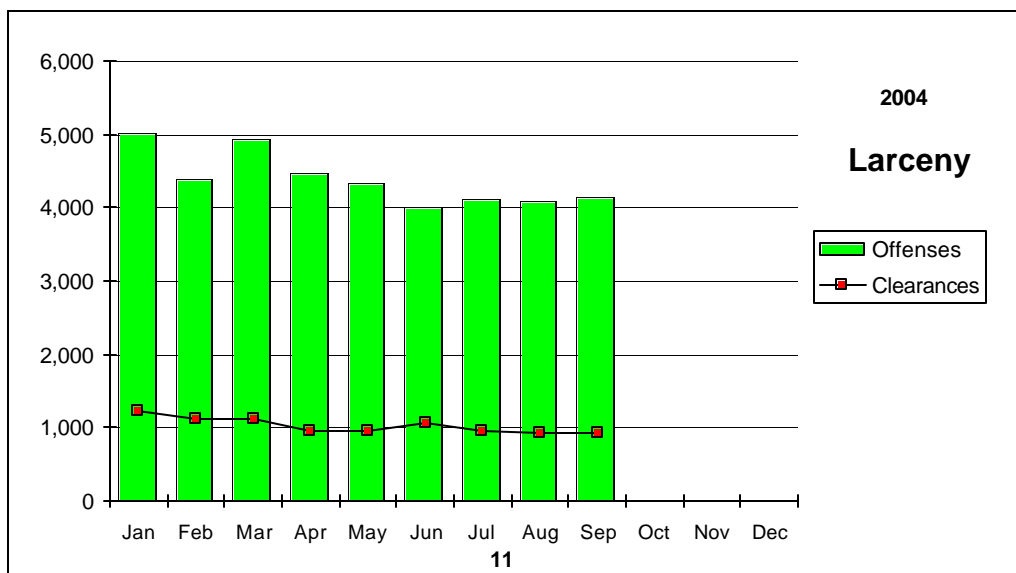
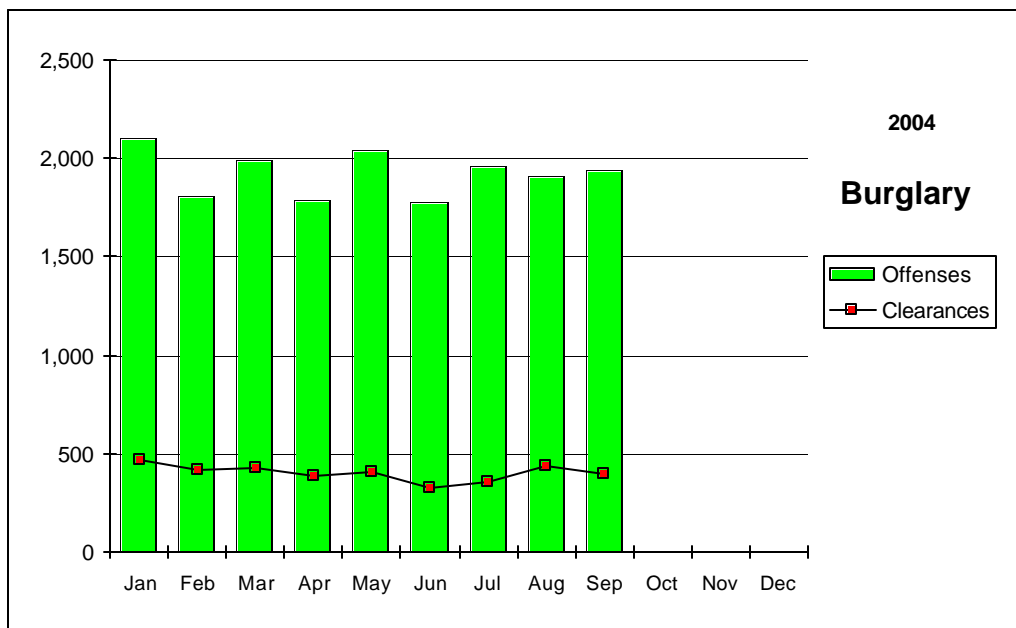
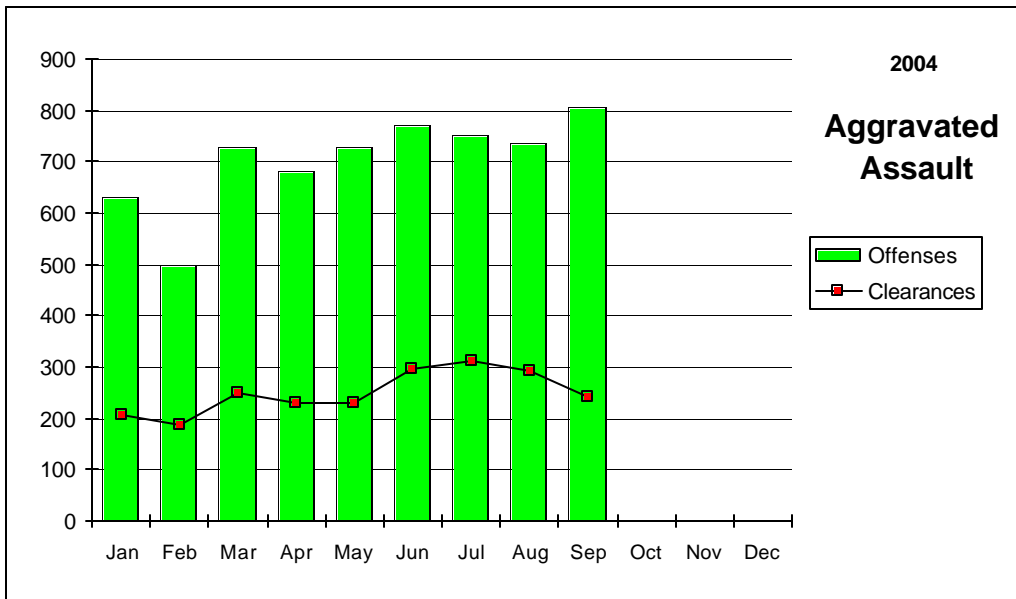
(by Percent)

	Murder	Rape	Robbery	Assault	Burglary	Larceny	MV Theft	Arson	Clear Rate
Nevada	66.67	24.46	18.68	35.43	20.84	23.39	12.07	10.90	21.49
National	62.40	44.30	24.90	56.10	12.70	17.60	13.60	16.00	19.60

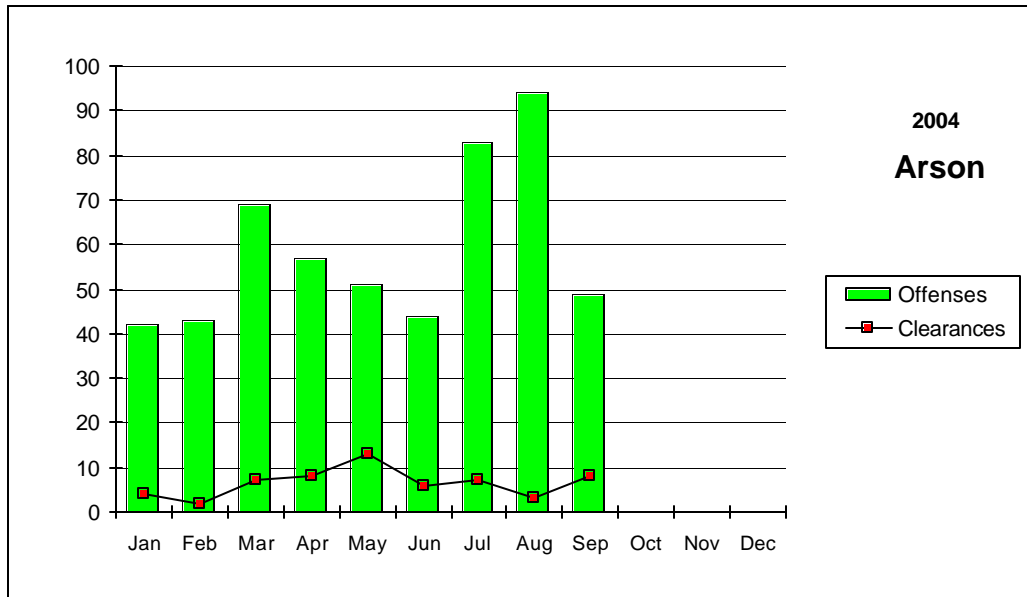
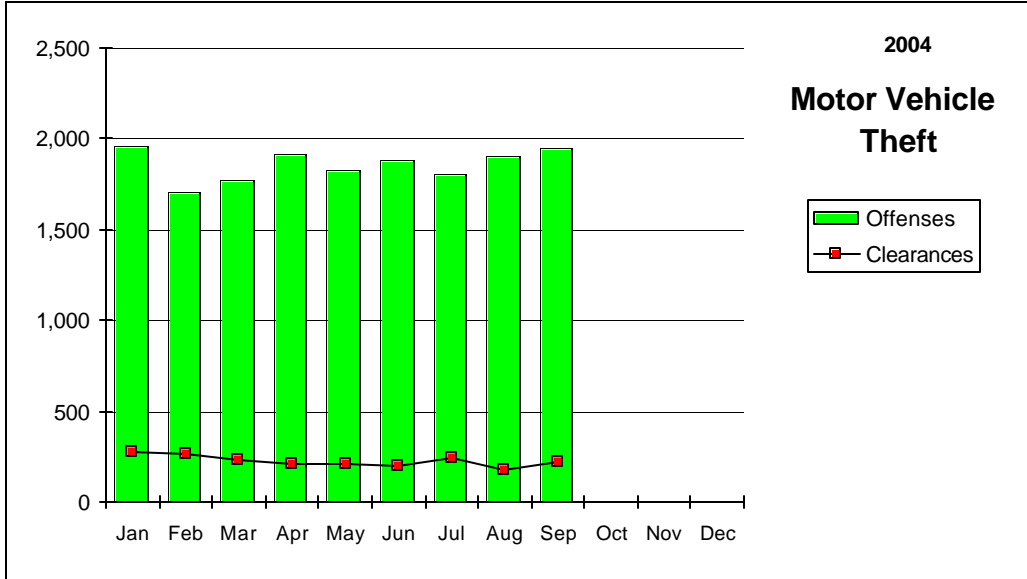
Nevada--Graphic Summary--UCR



Nevada--Graphic Summary--UCR



Nevada--Graphic Summary--UCR



Nevada--Murder--Incidence Level Variation--UCR

SEPTEMBER 2004

Agency	SEPTEMBER 2004				SEPTEMBER 2003			
	2004 Offenses	SEPTEMBER 2004 Cleared	2004 YTD Offenses	2004 YTD Cleared	2003 Offenses	SEPTEMBER 2003 Cleared	2003 YTD Offenses	2003 YTD Cleared
Boulder	0	0	0	0	0	0	1	0
Carlin PD	0	0	0	0	0	0	0	0
Carson SO	0	0	1	2	0	0	0	0
Churchill SO	1	1	1	1	0	0	0	0
Clark Co Schl PD	0	0	0	0	0	0	0	0
Douglas SO	0	0	0	0	0	0	0	0
Elko PD	1	1	1	1	0	0	0	0
Elko SO	0	0	0	0	0	0	1	1
Esmeralda SO	0	0	0	0	0	0	0	0
Eureka SO	0	0	0	0	0	0	0	0
Fallon PD	0	0	0	0	0	0	0	0
Henderson PD	1	1	8	9	2	1	8	4
Humboldt SO	0	0	0	0	0	0	0	0
Lander SO	0	0	1	0	0	0	0	0
Lincoln SO	0	0	0	0	0	0	0	0
Lovelock PD	0	0	0	0	0	0	0	0
LV Fire Dept	0	0	0	0	0	0	0	0
LV Metro	12	8	95	53	19	7	105	41
Lyon SO	0	0	0	0	0	0	0	0
Mesquite PD	0	0	0	0	0	0	1	0
Mineral SO	0	0	0	0	0	0	0	0
NLVPD	3	1	14	12	2	1	16	9
Nye SO	0	0	0	0	0	0	0	0
Pershing SO	0	0	0	0	1	1	1	1
Reno PD	1	0	9	5	2	1	9	6
Sparks PD	0	1	3	6	0	1	3	5
Storey SO	0	0	0	0	0	0	0	0
TMCC PD	0	0	0	0	0	0	0	0
UNLV PD	0	0	0	0	0	0	0	0
UNR PD	0	0	0	0	0	0	0	0
Washoe SO	0	0	0	0	1	0	5	2
Washoe Co Schl PD	0	0	0	0	0	0	0	0
Wendover PD	0	0	0	0	0	0	0	0
White Pine SO	0	0	1	1	0	0	0	0
Winnemucca PD	0	0	0	0	0	0	0	0
Yerington PD	0	0	1	0	0	0	0	0
TOTALS	19	13	135	90	27	12	150	69

Nevada--Rape--Incidence Level Variation--UCR

SEPTEMBER 2004

Agency	SEPTEMBER	SEPTEMBER	2004		SEPTEMBER	SEPTEMBER	2003 YTD	
	2004	2004	2004 YTD	2004	2003	2003	2003 YTD	2003 YTD
	Offenses	Cleared	Offenses	Cleared	Offenses	Cleared	Offenses	Cleared
Boulder	0	0	1	1	0	0	0	0
Carlin PD	0	0	0	0	0	0	0	0
Carson SO	0	0	0	0	0	0	1	0
Churchill SO	0	0	21	19	0	2	13	5
Clark Co Schl PD	1	0	2	1	0	0	0	0
Douglas SO	0	0	0	0	0	0	0	0
Elko PD	0	0	5	1	2	1	5	4
Elko SO	1	0	3	2	1	0	8	5
Esmeralda SO	0	0	0	0	1	1	1	1
Eureka SO	0	0	0	0	0	0	0	0
Fallon PD	0	0	0	0	0	0	1	0
Henderson PD	2	2	45	20	6	1	76	23
Humboldt SO	0	0	0	0	0	0	0	0
Lander SO	0	0	1	1	0	0	2	0
Lincoln SO	0	0	0	0	0	0	1	0
Lovelock PD	2	1	3	1	0	0	-1	0
LV Fire Dept	0	0	0	0	0	0	0	0
LV Metro	42	8	426	63	55	12	415	93
Lyon SO	1	2	6	3	1	0	6	2
Mesquite PD	0	0	1	1	0	0	0	0
Mineral SO	0	0	0	0	0	0	0	0
NLVPD	6	1	45	11	5	1	39	20
Nye SO	0	0	0	0	0	0	2	2
Pershing SO	-1	0	3	1	1	0	3	1
Reno PD	7	3	83	27	7	2	72	11
Sparks PD	2	-1	27	13	1	3	36	29
Storey SO	0	0	0	0	0	0	0	0
TMCC PD	0	0	0	0	0	0	0	0
UNLV PD	0	0	1	0	2	0	3	1
UNR PD	1	0	11	1	1	0	3	0
Washoe SO	0	0	1	-1	0	0	4	3
Washoe Co Schl PD	0	0	1	0	0	0	0	1
Wendover PD	0	0	0	0	0	0	1	0
White Pine SO	0	0	1	1	0	0	2	1
Winnemucca PD	1	0	4	3	2	2	4	4
Yerington PD	0	0	0	0	0	0	0	0
TOTALS	65	16	691	169	85	25	697	206

Nevada--Robbery--Incidence Level Variation--UCR

SEPTEMBER 2004

Agency	SEPTEMBER 2004		YTD 2004		SEPTEMBER 2003		YTD 2003	
	R Offenses	R Cleared	Offenses	Cleared	R Offenses	R Cleared	Offenses	Cleared
Boulder	0	0	1	0	0	0	2	1
Carlin PD	0	0	0	0	0	0	0	0
Carson SO	0	1	21	10	0	0	16	5
Churchill SO	0	0	0	0	1	0	1	0
Clark Co Schl PD	4	3	19	9	3	2	26	13
Douglas SO	3	2	9	6	1	1	5	4
Elko PD	0	0	4	1	1	2	8	3
Elko SO	0	0	1	1	0	0	2	2
Esmeralda SO	0	0	0	0	0	0	0	0
Eureka SO	0	0	1	1	0	0	0	0
Fallon PD	2	1	4	3	0	0	6	2
Henderson PD	11	3	99	36	18	2	116	32
Humboldt SO	0	0	1	1	0	0	0	0
Lander SO	0	0	1	0	0	0	1	0
Lincoln SO	0	0	0	0	0	0	0	0
Lovelock PD	0	0	0	0	0	0	0	0
LV Fire Dept	0	0	0	0	0	0	0	0
LV Metro	325	29	2,750	408	301	33	2,939	517
Lyon SO	0	0	3	1	0	0	4	1
Mesquite PD	0	0	4	4	0	0	3	1
Mineral SO	0	0	1	1	0	0	0	0
NLVPD	30	8	254	51	31	5	247	41
Nye SO	1	0	4	5	2	1	10	4
Pershing SO	1	0	1	0	0	0	0	0
Reno PD	25	7	349	94	51	12	342	99
Sparks PD	11	3	65	34	10	4	71	23
Storey SO	1	0	1	0	0	0	0	0
TMCC PD	0	0	1	0	0	0	0	0
UNLV PD	1	0	3	1	0	0	3	1
UNR PD	0	0	0	0	0	0	0	0
Washoe SO	1	0	8	4	0	1	16	7
Washoe Co Schl PD	0	0	0	0	0	0	5	5
Wendover PD	0	0	1	1	0	0	2	0
White Pine SO	0	0	1	1	0	0	0	0
Winnemucca PD	0	0	2	1	0	0	3	1
Yerington PD	0	0	0	0	0	0	0	0
TOTALS	416	57	3,609	674	419	63	3,828	762

Nevada--Aggravated Assault--Incidence Level Variation--UCR

SEPTEMBER 2004

Agency	SEPTEMBER	SEPTEMBER	2004 YTD	2004 YTD	SEPTEMBER	SEPTEMBER	2003 YTD	2003 YTD
	2004	2004			2003	2003		
	Offenses	Cleared	Offenses	Cleared	Offenses	Cleared	Offenses	Cleared
Boulder	0	0	10	7	3	1	29	13
Carlin PD	0	0	6	6	0	0	7	6
Carson SO	20	6	215	130	17	9	182	96
Churchill SO	4	4	34	24	6	4	44	33
Clark Co Schl PD	8	4	15	8	3	3	27	16
Douglas SO	10	2	48	34	3	0	30	15
Elko PD	0	0	12	11	1	1	12	3
Elko SO	3	1	17	12	2	2	10	8
Esmeralda SO	0	0	5	5	3	3	4	4
Eureka SO	3	2	6	5	0	0	3	2
Fallon PD	1	1	18	13	0	0	6	3
Henderson PD	13	5	168	93	26	14	170	130
Humboldt SO	2	2	25	22	6	2	40	25
Lander SO	4	2	29	20	0	0	15	5
Lincoln SO	1	1	6	2	0	0	1	1
Lovelock PD	0	0	14	11	3	2	13	10
LV Fire Dept	0	0	0	0	0	0	0	0
LV Metro	527	101	4,050	917	429	83	3,500	796
Lyon SO	5	5	66	62	7	6	56	48
Mesquite PD	1	0	7	5	0	0	12	11
Mineral SO	0	0	1	1	0	0	2	2
NLVPD	46	26	457	256	71	38	606	321
Nye SO	11	11	78	66	6	6	69	69
Pershing SO	4	2	28	14	3	3	18	11
Reno PD	100	41	649	295	51	31	499	275
Sparks PD	22	13	189	112	20	14	158	134
Storey SO	0	0	3	1	0	0	1	1
TMCC PD	0	0	0	0	0	0	0	0
UNLV PD	0	0	1	0	1	0	5	3
UNR PD	1	1	11	6	0	0	2	1
Washoe SO	19	9	126	71	18	14	241	158
Washoe Co Schl PD	0	0	0	0	0	0	4	4
Wendover PD	1	1	12	9	2	2	7	7
White Pine SO	2	2	17	16	3	3	25	22
Winnemucca PD	0	0	10	10	1	1	10	9
Yerington PD	0	0	0	0	0	0	4	3
TOTALS	808	242	6,333	2,244	685	242	5,812	2,245

Nevada--All Assaults--Incidence Level Variation--UCR

SEPTEMBER 2004

Agency	SEPTEMBER 2004 Offenses	SEPTEMBER 2004 Cleared	2004 YTD Offenses	2004 YTD Cleared	SEPTEMBER 2003 Offenses	SEPTEMBER 2003 Cleared	2003 YTD Offenses	2003 YTD Cleared
Boulder	1	0	26	13	3	1	34	16
Carlin PD	3	3	23	19	5	4	21	16
Carson SO	87	45	738	455	85	39	741	360
Churchill SO	37	21	174	146	21	19	169	135
Clark Co Schl PD	73	43	552	398	83	65	616	399
Douglas SO	60	40	469	350	50	35	423	301
Elko PD	13	6	191	106	27	17	220	96
Elko SO	5	1	30	19	3	2	16	12
Esmeralda SO	0	0	6	6	3	3	5	5
Eureka SO	5	4	12	11	1	0	8	4
Fallon PD	24	24	200	170	18	19	178	124
Henderson PD	234	124	1,840	1,027	214	115	1,765	1,197
Humboldt SO	3	3	38	31	8	5	51	32
Lander SO	4	2	41	29	0	0	50	34
Lincoln SO	7	4	30	12	3	1	14	9
Lovelock PD	4	2	40	32	9	5	45	39
LV Fire Dept	0	0	0	0	0	0	0	0
LV Metro	2,280	358	19,471	4,050	2,137	429	18,656	3,963
Lyon SO	59	57	426	411	38	37	345	324
Mesquite PD	16	12	126	117	13	12	153	126
Mineral SO	2	2	35	30	2	2	29	31
NLVPD	234	128	2,069	1,166	246	147	2,157	1,150
Nye SO	58	58	478	467	59	59	497	497
Pershing SO	7	4	50	24	7	5	36	25
Reno PD	425	211	3,384	1,830	374	197	3,268	1,678
Sparks PD	105	79	1,126	750	119	92	1,181	994
Storey SO	2	3	26	14	3	1	24	10
TMCC PD	0	0	3	0	1	0	1	0
UNLV PD	3	3	20	14	7	4	23	16
UNR PD	2	1	17	8	1	0	19	6
Washoe SO	81	42	615	370	64	40	654	420
Washoe Co Schl PD	0	0	0	0	0	0	20	20
Wendover PD	6	5	57	49	8	8	35	31
White Pine SO	13	13	90	89	11	11	85	72
Winnemucca PD	9	9	64	62	9	9	72	67
Yerington PD	8	7	36	32	3	5	47	42
TOTALS	3,870	1,314	32,503	12,307	3,635	1,388	31,658	12,251

Nevada--Burglary--Incidence Level Variation--UCR

SEPTEMBER 2004

Agency	SEPTEMBER	SEPTEMBER	2004 YTD	2004 YTD	SEPTEMBER	SEPTEMBER	2003 YTD	2003 YTD
	2004	2004			2003	2003		
	Offenses	Cleared	Offenses	Cleared	Offenses	Cleared	Offenses	Cleared
Boulder	18	2	114	11	7	1	85	29
Carlin PD	2	0	7	1	0	0	10	5
Carson SO	36	9	291	58	35	8	325	41
Churchill SO	13	5	88	22	11	2	57	16
Clark Co SchI PD	38	2	201	26	28	3	201	35
Douglas SO	30	3	193	32	23	2	206	38
Elko PD	6	0	114	15	19	2	101	9
Elko SO	9	2	91	18	11	1	75	15
Esmeralda SO	0	0	1	0	0	0	5	2
Eureka SO	1	0	3	1	1	0	4	0
Fallon PD	2	3	57	18	3	0	46	10
Henderson PD	141	21	1,239	175	132	10	1,040	119
Humboldt SO	5	4	32	14	3	1	22	3
Lander SO	1	0	21	2	0	0	21	4
Lincoln SO	1	0	10	4	4	0	20	8
Lovelock PD	3	0	26	12	6	2	20	10
LV Fire Dept	0	0	0	0	0	0	0	0
LV Metro	1,153	273	10,529	2,517	1,096	264	9,631	2,523
Lyon SO	25	5	211	22	18	2	172	23
Mesquite PD	0	0	3	2	0	0	10	10
Mineral SO	3	0	22	1	1	0	28	3
NLVPD	139	9	1,119	113	121	11	1,246	137
Nye SO	51	26	421	166	54	23	374	166
Pershing SO	3	0	29	4	1	0	29	5
Reno PD	133	15	1,273	114	140	10	1,418	139
Sparks PD	58	9	611	156	68	23	628	165
Storey SO	4	1	19	5	1	0	6	0
TMCC PD	2	0	6	0	0	0	4	0
UNLV PD	10	0	70	2	8	0	104	5
UNR PD	1	0	28	2	3	2	18	2
Washoe SO	43	4	353	51	44	5	401	40
Washoe Co SchI PD	3	1	28	6	5	0	48	8
Wendover PD	1	0	35	9	1	1	14	3
White Pine SO	3	0	29	6	5	3	41	9
Winnemucca PD	4	1	36	14	4	1	43	17
Yerington PD	0	0	20	12	3	2	38	19
TOTALS	1,942	395	17,330	3,611	1,856	379	16,491	3,618

Nevada--Larceny--Incidence Level Variation--UCR

SEPTEMBER 2004

Agency	SEPTEMBER	SEPTEMBER	2004 YTD		SEPTEMBER	SEPTEMBER	2003 YTD	
	2004 Offenses	2004 Cleared	Offenses	Cleared	2003 Offense	2003 Cleared	Offenses	2003 YTD Cleared
Boulder	13	0	71	8	9	2	115	14
Carlin PD	1	1	13	6	9	3	31	10
Carson SO	85	22	827	173	115	22	879	171
Churchill SO	14	8	128	51	8	4	113	31
Clark Co Schl PD	79	7	587	90	55	11	585	81
Douglas SO	92	16	672	142	53	20	548	152
Elko PD	31	3	274	44	42	4	290	34
Elko SO	7	3	79	16	5	0	66	9
Esmeralda SO	0	0	1	0	0	0	2	2
Eureka SO	1	0	12	3	2	0	10	2
Fallon PD	30	9	331	89	32	6	322	58
Henderson PD	273	51	2,489	440	229	39	2,130	444
Humboldt SO	3	3	20	11	1	0	35	13
Lander SO	3	1	28	6	0	0	25	3
Lincoln SO	1	0	11	2	12	1	32	6
Lovelock PD	1	0	21	13	1	1	25	17
LV Fire Dept	0	0	0	0	0	0	0	0
LV Metro	2,253	537	22,107	5,626	2,409	11	22,079	2,853
Lyon SO	40	8	375	94	43	11	316	74
Mesquite PD	21	8	195	50	19	13	176	50
Mineral SO	1	1	16	5	2	1	15	6
NLVPD	237	55	2,205	407	246	51	2,004	419
Nye SO	49	25	472	231	59	24	425	227
Pershing SO	6	3	31	13	4	1	40	15
Reno PD	556	123	5,220	1,144	597	122	5,427	1,104
Sparks PD	190	33	1,888	350	207	48	1,825	510
Storey SO	2	1	21	2	5	0	29	2
TMCC PD	0	0	6	1	1	0	9	0
UNLV PD	16	1	203	7	32	0	188	5
UNR PD	17	0	116	1	16	0	100	2
Washoe SO	63	6	587	55	86	9	555	73
Washoe Co Schl PD	24	2	181	55	25	6	189	40
Wendover PD	9	4	126	44	7	2	73	21
White Pine SO	16	5	108	33	9	1	98	21
Winnemucca PD	4	1	90	29	5	3	108	39
Yerington PD	2	0	18	5	0	1	18	8
TOTALS	4,140	937	39,529	9,246	4,345	417	38,882	6,516

Nevada--MV Theft--Incidence Level Variation--UCR

SEPTEMBER 2004

Agency	SEPTEMBER 2004				SEPTEMBER 2003			
	2004 Offenses	SEPTEMBER 2004 Cleared	2004 YTD Offenses	2004 YTD Cleared	2003 Offenses	SEPTEMBER 2003 Cleared	2003 YTD Offenses	2003 YTD Cleared
Boulder	2	0	19	1	2	1	22	16
Carlin PD	2	1	3	1	0	0	7	3
Carson SO	16	3	162	42	13	2	127	19
Churchill SO	0	0	13	8	2	2	35	17
Clark Co Schl PD	1	0	37	3	6	1	39	3
Douglas SO	14	8	75	49	5	5	40	30
Elko PD	2	0	37	2	5	0	24	4
Elko SO	2	2	19	7	3	1	18	10
Esmeralda SO	0	0	0	0	0	0	0	0
Eureka SO	0	0	2	1	0	0	4	2
Fallon PD	1	1	19	5	2	0	17	3
Henderson PD	122	3	993	38	115	3	1,023	55
Humboldt SO	0	0	6	4	0	0	4	2
Lander SO	2	0	12	4	0	0	3	1
Lincoln SO	1	2	6	3	2	0	7	0
Lovelock PD	0	0	4	2	0	0	0	0
LV Fire Dept	0	0	0	0	0	0	0	0
LV Metro	1,384	147	11,894	1,472	1,268	151	10,744	1,328
Lyon SO	12	8	62	23	3	0	57	13
Mesquite PD	2	0	27	6	2	2	30	11
Mineral SO	0	0	5	3	0	0	0	0
NLVPD	166	9	1,457	83	158	12	1,308	81
Nye SO	6	4	40	26	2	0	46	25
Pershing SO	0	1	2	1	0	0	1	0
Reno PD	156	21	1,240	128	134	9	1,090	104
Sparks PD	40	3	345	63	44	10	309	77
Storey SO	0	0	3	0	0	0	2	0
TMCC PD	0	0	0	0	0	0	0	0
UNLV PD	1	0	51	2	2	0	61	5
UNR PD	2	1	10	1	1	0	5	0
Washoe SO	10	0	140	23	21	5	138	22
Washoe Co Schl PD	0	0	3	1	1	1	6	3
Wendover PD	0	0	7	6	1	1	10	8
White Pine SO	1	1	8	5	3	1	18	5
Winnemucca PD	2	2	9	4	2	0	13	4
Yerington PD	0	0	0	0	0	0	0	0
TOTALS	1,947	217	16,710	2,017	1,797	207	15,208	1,851

Nevada--Arson--Incidence Level Variation--UCR

SEPTEMBER 2004

Agency	SEPTEMBER	SEPTEMBER	2004		SEPTEMBER	SEPTEMBER	2003	
	2004	2004	2004 YTD	YTD	2003	2003	2003 YTD	YTD
	Offenses	Cleared	Offenses	Cleared	Offenses	Cleared	Offenses	Cleared
Boulder	0	0	3	0	0	0	2	1
Carlin PD	0	0	0	0	0	0	0	0
Carson SO	2	1	12	3	2	0	14	1
Churchill SO	0	0	3	2	0	0	1	1
Clark Co Schl PD	3	1	36	8	3	1	55	16
Douglas SO	2	2	6	6	2	2	3	2
Elko PD	0	0	7	2	0	0	1	1
Elko SO	2	0	5	2	0	0	2	1
Esmeralda SO	0	0	0	0	0	0	0	0
Eureka SO	0	0	0	0	0	0	0	0
Fallon PD	1	0	2	1	0	0	0	0
Henderson PD	1	0	58	10	1	0	38	4
Humboldt SO	0	0	2	2	0	0	0	0
Lander SO	0	0	0	0	0	0	0	0
Lincoln SO	0	0	3	0	0	0	0	0
Lovelock PD	0	0	0	0	0	0	0	0
LV Fire Dept	5	0	52	6	4	0	67	7
LV Metro	19	0	230	0	31	0	146	3
Lyon SO	1	1	5	1	0	0	8	4
Mesquite PD	0	0	0	0	0	0	0	0
Mineral SO	0	0	3	1	0	0	0	0
NLVPD	1	0	39	2	5	0	39	6
Nye SO	0	0	3	0	0	0	9	0
Pershing SO	0	0	0	0	0	0	0	0
Reno PD	9	1	39	2	5	0	35	5
Sparks PD	2	1	6	6	0	0	0	0
Storey SO	0	0	1	0	0	0	2	2
TMCC PD	0	0	0	0	0	0	0	0
UNLV PD	0	0	1	1	0	0	1	1
UNR PD	0	0	0	0	0	0	1	0
Washoe SO	1	1	3	1	0	0	5	1
Washoe CO Scl PD	0	0	10	0	2	0	14	3
Wendover PD	0	0	1	0	0	0	0	0
White Pine SO	0	0	1	1	0	0	1	0
Winnemucca PD	0	0	1	1	1	0	2	0
Yerington PD	0	0	0	0	0	0	0	0
TOTALS	49	8	532	58	56	3	446	59

Stolen/Recovered Property Report

SEPTEMBER 2004

Property Type	Boulder PD	Carlin PD	Carson SO	Churchill SO	Clark Co SchI PD	Douglas SO	Elko PD	Elko SO	Esmeralda SO
Currency									
Stolen	\$1,569	\$0	\$18,811	\$2,100	\$4,366	\$20,140	\$613	\$3,507	\$0
Recovered	\$0	\$0	\$15	\$0	\$0	\$37	\$0	\$0	\$0
% Recovered	0.0%	0.0%	0.1%	0.0%	0.0%	0.2%	0.0%	0.0%	0.0%
Jewelry									
Stolen	\$7,340	\$0	\$59,068	\$7,450	\$2,652	\$4,930	\$1,500	\$0	\$0
Recovered	\$0	\$0	\$54	\$50	\$0	\$0	\$0	\$0	\$0
% Recovered	0.0%	0.0%	0.1%	0.7%	0.0%	0.0%	0.0%	0.0%	0.0%
Clothing									
Stolen	\$40	\$0	\$175	\$800	\$621	\$2,285	\$25	\$0	\$0
Recovered	\$20	\$0	\$0	\$0	\$0	\$100	\$0	\$0	\$0
% Recovered	50.0%	0.0%	0.0%	0.0%	0.0%	4.4%	0.0%	0.0%	0.0%
Motor Vehicle									
Stolen	\$43,200	\$9,000	\$143,826	\$500	\$8,100	\$112,700	\$3,500	\$25,000	\$0
Recovered	\$3,200	\$9,000	\$141,400	\$3,710	\$0	\$92,600	\$3,500	\$10,000	\$0
% Recovered	7.4%	100.0%	98.3%	742.0%	0.0%	82.2%	100.0%	40.0%	0.0%
Office Equipment									
Stolen	\$0	\$0	\$2,850	\$0	\$35,393	\$0	\$1,634	\$0	\$0
Recovered	\$0	\$0	\$0	\$0	\$0	\$0	\$0	\$0	\$0
% Recovered	0.0%	0.0%	0.0%	0.0%	0.0%	0.0%	0.0%	0.0%	0.0%
TV, VCR, Camera, Etc.									
Stolen	\$0	\$0	\$7,510	\$8,854	\$8,670	\$4,887	\$1,909	\$541	\$0
Recovered	\$0	\$0	\$0	\$0	\$0	\$216	\$229	\$0	\$0
% Recovered	0.0%	0.0%	0.0%	0.0%	0.0%	4.4%	12.0%	0.0%	0.0%
Firearm									
Stolen	\$638	\$0	\$4,250	\$1,350	\$0	\$0	\$0	\$0	\$0
Recovered	\$0	\$0	\$0	\$1,350	\$0	\$0	\$0	\$0	\$0
% Recovered	0.0%	0.0%	0.0%	100.0%	0.0%	0.0%	0.0%	0.0%	0.0%
Household Goods									
Stolen	\$0	\$0	\$50	\$3,855	\$0	\$0	\$860	\$0	\$0
Recovered	\$0	\$0	\$0	\$0	\$0	\$0	\$0	\$0	\$0
% Recovered	0.0%	0.0%	0.0%	0.0%	0.0%	0.0%	0.0%	0.0%	0.0%
Consumable Goods									
Stolen	\$104	\$300	\$40	\$794	\$347	\$74	\$168	\$0	\$0
Recovered	\$0	\$300	\$38	\$1,002	\$0	\$0	\$108	\$0	\$0
% Recovered	0.0%	100.0%	95.0%	126.2%	0.0%	0.0%	64.3%	0.0%	0.0%
Livestock									
Stolen	\$0	\$0	\$0	\$0	\$0	\$0	\$0	\$0	\$0
Recovered	\$0	\$0	\$0	\$0	\$0	\$0	\$0	\$0	\$0
% Recovered	0.0%	0.0%	0.0%	0.0%	0.0%	0.0%	0.0%	0.0%	0.0%
Misc.									
Stolen	\$22,612	\$2,500	\$76,246	\$9,376	\$130,693	\$76,579	\$3,302	\$3,158	\$0
Recovered	\$391	\$0	\$1,076	\$395	\$0	\$7,815	\$50	\$0	\$0
% Recovered	1.7%	0.0%	1.4%	4.2%	0.0%	10.2%	1.5%	0.0%	0.0%
TOTALS									
Stolen	\$75,503	\$11,800	\$312,826	\$35,079	\$190,842	\$221,595	\$13,511	\$32,206	\$0
Recovered	\$3,611	\$9,300	\$142,583	\$6,507	\$0	\$100,768	\$3,887	\$10,000	\$0
% Recovered	4.8%	78.8%	45.6%	18.5%	0.0%	45.5%	28.8%	31.1%	0.0%

Stolen/Recovered Property Report

SEPTEMBER 2004

Property Type	Eureka SO	Fallon PD	Henderson PD	Humboldt SO	Lander SO	Las Vegas Metro	Lincoln SO	Lovelock PD	Lyon SO
Currency									
Stolen	\$0	\$4,161	\$29,147	\$337	\$0	\$2,672,901	\$0	\$0	\$7,738
Recovered	\$0	\$0	\$810	\$137	\$0	\$10,480	\$0	\$0	\$0
% Recovered	0.0%	0.0%	2.8%	40.7%	0.0%	0.4%	0.0%	0.0%	0.0%
Jewelry									
Stolen	\$0	\$91	\$49,614	\$500	\$0	\$1,201,332	\$0	\$0	\$89,913
Recovered	\$0	\$0	\$2,077	\$500	\$0	\$6,663	\$0	\$0	\$80
% Recovered	0.0%	0.0%	4.2%	100.0%	0.0%	0.6%	0.0%	0.0%	0.1%
Clothing									
Stolen	\$0	\$0	\$30,846	\$0	\$0	\$258,923	\$0	\$0	\$0
Recovered	\$0	\$0	\$806	\$0	\$0	\$18,761	\$0	\$0	\$0
% Recovered	0.0%	0.0%	2.6%	0.0%	0.0%	7.2%	0.0%	0.0%	0.0%
Motor Vehicle									
Stolen	\$0	\$1,700	\$1,666,333	\$0	\$2	\$4,303,883	\$500	\$0	\$144,400
Recovered	\$0	\$1,700	\$1,194,974	\$0	\$1	\$1,578,049	\$0	\$0	\$118,000
% Recovered	0.0%	100.0%	71.7%	0.0%	50.0%	36.7%	0.0%	0.0%	81.7%
Office Equipment									
Stolen	\$0	\$0	\$91,398	\$0	\$100	\$327,910	\$0	\$0	\$5,879
Recovered	\$0	\$0	\$0	\$0	\$0	\$2,925	\$0	\$0	\$3,171
% Recovered	0.0%	0.0%	0.0%	0.0%	0.0%	0.9%	0.0%	0.0%	53.9%
TV, VCR, Camera, Etc.									
Stolen	\$200	\$945	\$119,352	\$250	\$150	\$646,415	\$0	\$0	\$6,296
Recovered	\$0	\$0	\$830	\$250	\$0	\$7,428	\$0	\$0	\$0
% Recovered	0.0%	0.0%	0.7%	100.0%	0.0%	1.1%	0.0%	0.0%	0.0%
Firearm									
Stolen	\$500	\$0	\$11,954	\$395	\$0	\$48,564	\$650	\$0	\$400
Recovered	\$0	\$0	\$1,150	\$145	\$0	\$1,800	\$0	\$0	\$150
% Recovered	0.0%	0.0%	9.6%	36.7%	0.0%	3.7%	0.0%	0.0%	37.5%
Household Goods									
Stolen	\$0	\$1,308	\$21,850	\$155	\$0	\$128,033	\$0	\$0	\$2,100
Recovered	\$0	\$6	\$0	\$0	\$0	\$140	\$1,800	\$0	\$0
% Recovered	0.0%	0.5%	0.0%	0.0%	0.0%	0.1%	0.0%	0.0%	0.0%
Consumable Goods									
Stolen	\$0	\$0	\$5,107	\$0	\$0	\$147,339	\$0	\$34	\$58
Recovered	\$0	\$0	\$62	\$0	\$0	\$2,698	\$0	\$0	\$0
% Recovered	0.0%	0.0%	1.2%	0.0%	0.0%	1.8%	0.0%	0.0%	0.0%
Livestock									
Stolen	\$0	\$0	\$0	\$0	\$0	\$3,434	\$0	\$0	\$0
Recovered	\$0	\$0	\$0	\$0	\$0	\$0	\$0	\$0	\$0
% Recovered	0.0%	0.0%	0.0%	0.0%	0.0%	0.0%	0.0%	0.0%	0.0%
Misc.									
Stolen	\$0	\$3,369	\$726,222	\$0	\$12,820	\$2,633,008	\$1,760	\$285	\$33,237
Recovered	\$0	\$753	\$290,200	\$0	\$10	\$143,662	\$1,764	\$250	\$9,150
% Recovered	0.0%	22.4%	40.0%	0.0%	0.1%	5.5%	100.2%	87.7%	27.5%
TOTALS									
Stolen	\$700	\$11,574	\$2,751,823	\$1,637	\$13,072	\$12,371,742	\$2,910	\$319	\$290,021
Recovered	\$0	\$2,459	\$1,490,909	\$1,032	\$11	\$1,772,606	\$3,564	\$250	\$130,551
% Recovered	0.0%	21.2%	54.2%	63.0%	0.1%	14.3%	122.5%	78.4%	45.0%

Stolen/Recovered Property Report

SEPTEMBER 2004

Property Type	Mesquite PD	Mineral SO	NLVPD	Nye SO	Pershing SO	Reno PD	Sparks PD	Storey SO	TMCC PD	UNLV PD
Currency										
Stolen	\$17,410	\$0	\$91,710	\$2,500	\$0	\$50,149	\$24,480	\$0	\$0	\$2,968
Recovered	\$0	\$0	\$746	\$0	\$0	\$0	\$69	\$0	\$0	\$0
% Recovered	0.0%	0.0%	0.8%	0.0%	0.0%	0.0%	0.3%	0.0%	0.0%	0.0%
Jewelry										
Stolen	\$37,600	\$0	\$32,709	\$2,900	\$0	\$60,254	\$11,267	\$0	\$0	\$0
Recovered	\$0	\$0	\$209	\$800	\$0	\$3,008	\$2,670	\$0	\$0	\$0
% Recovered	0.0%	0.0%	0.6%	27.6%	0.0%	5.0%	23.7%	0.0%	0.0%	0.0%
Clothing										
Stolen	\$0	\$0	\$7,430	\$700	\$0	\$14,476	\$4,878	\$0	\$200	\$60
Recovered	\$0	\$0	\$387	\$250	\$0	\$2,130	\$265	\$0	\$0	\$0
% Recovered	0.0%	0.0%	5.2%	35.7%	0.0%	14.7%	5.4%	0.0%	0.0%	0.0%
Motor Vehicle										
Stolen	\$16,000	\$0	\$1,283,900	\$38,600	\$0	\$851,534	\$294,055	\$0	\$0	\$0
Recovered	\$16,000	\$0	\$602,087	\$20,500	\$0	\$564,056	\$181,530	\$0	\$0	\$0
% Recovered	100.0%	0.0%	46.9%	53.1%	0.0%	66.2%	61.7%	0.0%	0.0%	0.0%
Office Equipment										
Stolen	\$0	\$0	\$2,025	\$600	\$400	\$32,095	\$10,046	\$0	\$0	\$1,000
Recovered	\$0	\$0	\$0	\$300	\$0	\$141	\$6,903	\$0	\$0	\$0
% Recovered	0.0%	0.0%	0.0%	50.0%	0.0%	0.4%	68.7%	0.0%	0.0%	0.0%
TV, VCR, Camera, Etc.										
Stolen	\$1,781	\$804	\$111,813	\$500	\$400	\$77,697	\$27,368	\$0	\$60	\$7,724
Recovered	\$0	\$0	\$1,648	\$500	\$0	\$1,088	\$1,443	\$0	\$0	\$0
% Recovered	0.0%	0.0%	1.5%	100.0%	0.0%	1.4%	5.3%	0.0%	0.0%	0.0%
Firearm										
Stolen	\$0	\$0	\$15,800	\$2,800	\$1,100	\$35,911	\$15,218	\$0	\$0	\$0
Recovered	\$0	\$0	\$400	\$900	\$0	\$950	\$0	\$0	\$0	\$0
% Recovered	0.0%	0.0%	2.5%	32.1%	0.0%	2.6%	0.0%	0.0%	0.0%	0.0%
Household Goods										
Stolen	\$450	\$0	\$35,851	\$500	\$0	\$9,634	\$58,094	\$0	\$0	\$0
Recovered	\$0	\$0	\$106	\$250	\$0	\$1,754	\$4,531	\$0	\$0	\$0
% Recovered	0.0%	0.0%	0.3%	50.0%	0.0%	18.2%	7.8%	0.0%	0.0%	0.0%
Consumable Goods										
Stolen	\$0	\$0	\$57,045	\$15	\$0	\$1,541	\$1,942	\$0	\$0	\$0
Recovered	\$0	\$0	\$582	\$0	\$0	\$565	\$618	\$0	\$0	\$0
% Recovered	0.0%	0.0%	1.0%	0.0%	0.0%	36.7%	31.8%	0.0%	0.0%	0.0%
Livestock										
Stolen	\$0	\$0	\$958	\$0	\$0	\$0	\$0	\$0	\$0	\$0
Recovered	\$0	\$0	\$0	\$0	\$0	\$0	\$0	\$0	\$0	\$0
% Recovered	0.0%	0.0%	0.0%	0.0%	0.0%	0.0%	0.0%	0.0%	0.0%	0.0%
Misc.										
Stolen	\$23,802	\$0	\$210,083	\$18,181	\$4,670	\$270,666	\$47,307	\$0	\$0	\$1,130
Recovered	\$14	\$0	\$1,659	\$9,562	\$0	\$7,367	\$4,443	\$0	\$0	\$100
% Recovered	0.1%	0.0%	0.8%	52.6%	0.0%	2.7%	9.4%	0.0%	0.0%	8.8%
TOTALS										
Stolen	\$97,043	\$804	\$1,849,324	\$67,296	\$6,570	\$1,403,957	\$494,655	\$0	\$260	\$12,882
Recovered	\$16,014	\$0	\$607,824	\$33,062	\$0	\$581,059	\$202,472	\$0	\$0	\$100
% Recovered	16.5%	0.0%	32.9%	49.1%	0.0%	41.4%	40.9%	0.0%	0.0%	0.8%

Stolen/Recovered Property Report

SEPTEMBER 2004

Property Type	UNR PD	Washoe SO	Washoe Co Schl PD	Wendover PD	White Pine SO	Winnemucca PD	Yerington PD	Total By Property
Currency								
Stolen	\$0	\$35,592	\$791	\$730	\$600	\$102	\$75	\$2,992,497
Recovered	\$0	\$0	\$0	\$0	\$0	\$0	\$0	\$12,294
% Recovered	0.0%	0.0%	0.0%	0.0%	0.0%	0.0%	0.0%	0.4%
Jewelry								
Stolen	\$0	\$111,853	\$0	\$20	\$0	\$0	\$0	\$1,680,993
Recovered	\$0	\$0	\$0	\$20	\$0	\$0	\$0	\$16,131
% Recovered	0.0%	0.0%	0.0%	100.0%	0.0%	0.0%	0.0%	1.0%
Clothing								
Stolen	\$0	\$5,560	\$0	\$0	\$0	\$0	\$0	\$327,019
Recovered	\$0	\$0	\$0	\$0	\$0	\$0	\$0	\$22,719
% Recovered	0.0%	0.0%	0.0%	0.0%	0.0%	0.0%	0.0%	6.9%
Motor Vehicle								
Stolen	\$12,000	\$79,525	\$0	\$0	\$7,500	\$30,000	\$0	\$9,075,758
Recovered	\$0	\$1,500	\$0	\$0	\$7,500	\$30,000	\$0	\$4,579,307
% Recovered	0.0%	1.9%	0.0%	0.0%	100.0%	100.0%	0.0%	50.5%
Office Equipment								
Stolen	\$3,300	\$11,804	\$150	\$0	\$0	\$0	\$0	\$526,584
Recovered	\$0	\$2,000	\$0	\$0	\$0	\$0	\$0	\$15,440
% Recovered	0.0%	16.9%	0.0%	0.0%	0.0%	0.0%	0.0%	2.9%
TV, VCR, Camera, Etc.								
Stolen	\$5,825	\$52,884	\$749	\$1,650	\$770	\$420	\$0	\$1,096,424
Recovered	\$300	\$0	\$0	\$65	\$0	\$0	\$0	\$13,997
% Recovered	5.2%	0.0%	0.0%	3.9%	0.0%	0.0%	0.0%	1.3%
Firearm								
Stolen	\$0	\$2,500	\$0	\$0	\$150	\$0	\$0	\$142,180
Recovered	\$0	\$950	\$0	\$0	\$150	\$0	\$0	\$7,945
% Recovered	0.0%	38.0%	0.0%	0.0%	100.0%	0.0%	0.0%	5.6%
Household Goods								
Stolen	\$0	\$8,420	\$0	\$0	\$2,094	\$0	\$0	\$273,254
Recovered	\$0	\$0	\$0	\$0	\$7	\$0	\$0	\$8,594
% Recovered	0.0%	0.0%	0.0%	0.0%	0.3%	0.0%	0.0%	3.1%
Consumable Goods								
Stolen	\$0	\$14	\$0	\$41	\$54	\$1,500	\$0	\$216,517
Recovered	\$0	\$0	\$0	\$7	\$0	\$1,500	\$0	\$7,480
% Recovered	0.0%	0.0%	0.0%	17.1%	0.0%	100.0%	0.0%	3.5%
Livestock								
Stolen	\$0	\$0	\$0	\$0	\$0	\$0	\$0	\$4,392
Recovered	\$0	\$0	\$0	\$0	\$0	\$0	\$0	\$0
% Recovered	0.0%	0.0%	0.0%	0.0%	0.0%	0.0%	0.0%	0.0%
Misc.								
Stolen	\$7,541	\$93,385	\$1,826	\$767	\$4,699	\$2,000	\$150	\$4,421,374
Recovered	\$1,250	\$20,908	\$18	\$385	\$0	\$0	\$0	\$501,222
% Recovered	16.6%	22.4%	1.0%	0.0%	0.0%	0.0%	0.0%	11.3%
TOTALS								
Stolen	\$28,666	\$401,537	\$3,516	\$3,208	\$15,867	\$34,022	\$225	\$20,756,991
Recovered	\$1,550	\$25,358	\$18	\$477	\$7,657	\$31,500	\$0	\$5,185,128
% Recovered	5.4%	6.3%	0.5%	14.9%	48.3%	92.6%	0.0%	25.0%

Nevada--Assaults on Officers by Agency--UCR

SEPTEMBER 2004

Agency	SEPTEMBER	SEPTEMBER	2004	2004	SEPTEMBER	SEPTEMBER	2003	2003
	2004	2004	YTD	YTD	2003	2003	YTD	YTD
	Offenses	Cleared	Offenses	Cleared	Offenses	Cleared	Offenses	Cleared
Boulder	0	0	3	3	0	0	0	0
Carlin PD	0	0	1	1	0	0	0	0
Carson SO	1	0	5	3	0	0	9	9
Churchill SO	0	0	0	0	2	2	7	7
ClrkSchIDst PD	0	0	0	0	0	0	0	0
Douglas SO	0	0	4	3	0	0	7	7
Elko PD	2	2	8	8	2	1	7	6
Elko SO	0	0	1	1	0	0	0	0
Esmeralda SO	0	0	0	0	0	0	0	0
Eureka SO	0	0	0	0	0	0	0	0
Fallon PD	0	0	1	1	0	0	0	0
Henderson PD	0	0	3	2	1	1	10	10
Highway Patrol	1	1	13	12	1	1	20	18
Humboldt SO	0	0	0	0	0	0	3	3
Lander SO	0	0	0	0	0	0	0	0
Lincoln SO	0	0	0	0	0	0	0	0
Lovelock PD	0	0	0	0	0	0	0	0
LV Fire Dept	0	0	0	0	0	0	0	0
LV Metro	18	18	215	210	25	25	242	242
Lyon SO	1	1	7	7	0	0	4	4
Mesquite PD	0	0	0	0	0	0	0	0
Mineral SO	0	0	0	0	0	0	0	0
NV Div Investigations	0	0	0	0	0	0	0	0
NLVPD	4	3	46	44	6	6	53	50
Nye SO	2	2	4	4	0	0	8	8
Pershing SO	2	2	2	2	0	0	0	0
Reno PD	4	4	21	20	2	2	13	12
Sparks PD	3	3	7	7	2	2	10	10
Storey SO	0	0	0	0	0	0	0	0
TMCC PD	0	0	0	0	0	0	0	0
UNLV PD	2	2	4	4	3	3	7	7
UNR PD	0	0	0	0	0	0	0	0
Washoe SO	0	0	0	0	0	0	2	2
Washoe Co Schl PD	0	0	0	0	0	0	0	0
Wendover PD	0	0	3	3	2	2	3	3
White Pine SO	0	0	2	2	0	0	0	0
Winnemucca PD	0	0	3	3	0	0	1	1
Yerington PD	0	0	0	0	0	0	0	0
TOTALS	40	38	353	340	46	45	406	399

Nevada -- Assaults by Agency/Weapon/Assignment -- UCR

SEPTEMBER 2004

Table 16

Agency	Total Assaults	Number Cleared	Firearm	Knife / Cutting Device	Other Danger. Weapon	Hands, Fists, Feet, Etc.	2-Officer Vehicle	1-Officer Vehicle- Alone	1-Officer Vehicle- Assisted	Det./Spec. Assign. - Alone	Det./Spec. Assign. - Assisted	Other- Alone	Other- Assisted
Boulder City PD	0	0	0	0	0	0	0	0	0	0	0	0	0
Carlin PD	0	0	0	0	0	0	0	0	0	0	0	0	0
Carson City SO	1	0	0	0	0	1	0	0	1	0	0	0	0
Churchill Co SO	0	0	0	0	0	0	0	0	0	0	0	0	0
Clark School Dist PD	0	0	0	0	0	0	0	0	0	0	0	0	0
Douglas Co SO	0	0	0	0	0	0	0	0	0	0	0	0	0
Elko PD	2	2	0	0	0	2	0	0	2	0	0	0	0
Elko Co SO	0	0	0	0	0	0	0	0	0	0	0	0	0
Esmeralda Co SO	0	0	0	0	0	0	0	0	0	0	0	0	0
Eureka Co SO	0	0	0	0	0	0	0	0	0	0	0	0	0
Fallon PD	0	0	0	0	0	0	0	0	0	0	0	0	0
Henderson PD	0	0	0	0	0	0	0	0	0	0	0	0	0
NV Highway Patrol	1	1	0	0	0	1	0	1	0	0	0	0	1
Humboldt Co SO	0	0	0	0	0	0	0	0	0	0	0	0	0
Lander Co SO	0	0	0	0	0	0	0	0	0	0	0	0	0
Lincoln Co SO	0	0	0	0	0	0	0	0	0	0	0	0	0
Lovelock PD	0	0	0	0	0	0	0	0	0	0	0	0	0
Las Vegas Fire Dept	0	0	0	0	0	0	0	0	0	0	0	0	0
Las Vegas Metro PD	18	18	1	0	6	11	6	5	2	2	2	0	1
Lyon Co SO	1	1	0	0	0	1	0	0	1	0	0	0	0
Mesquite PD	0	0	0	0	0	0	0	0	0	0	0	0	0
Mineral Co SO	0	0	0	0	0	0	0	0	0	0	0	0	0
NV Div of Investigations	0	0	0	0	0	0	0	0	0	0	0	0	0
North Las Vegas PD	4	3	0	0	1	3	2	0	1	0	0	1	0
Nye Co SO	2	2	0	0	0	2	0	0	2	0	0	0	0
Pershing Co SO	2	2	2	0	0	0	0	0	0	0	0	2	2
Reno PD	4	4	0	0	0	4	2	2	0	0	0	0	0
Sparks PD	3	3	1	0	0	2	0	0	3	0	0	0	0
Storey Co SO	0	0	0	0	0	0	0	0	0	0	0	0	0
TMCC PD	0	0	0	0	0	0	0	0	0	0	0	0	0
UNLV PD	2	2	0	0	0	2	0	0	0	0	0	0	2
UNR PD	0	0	0	0	0	0	0	0	0	0	0	0	0
Washoe Co SO	0	0	0	0	0	0	0	0	0	0	0	0	0
Washoe Co School PD	0	0	0	0	0	0	0	0	0	0	0	0	0
West Wendover PD	0	0	0	0	0	0	0	0	0	0	0	0	0
White Pine Co SO	0	0	0	0	0	0	0	0	0	0	0	0	0
Winnemucca PD	0	0	0	0	0	0	0	0	0	0	0	0	0
Yerington PD	0	0	0	0	0	0	0	0	0	0	0	0	0
TOTALS	40	38	4	0	7	29	10	8	12	2	2	3	6

28

Nevada -- Officer Assaults by Activity/Weapon/Assignment -- UCR

SEPTEMBER 2004

Table 17

29

ACTIVITY TYPE	Total Assaults	Number Cleared	Firearm	Knife / Cutting Device	Other Danger. Weapon	Hands, Fists, Feet, Etc.	2-Officer Vehicle	1-Officer Vehicle- Alone	1-Officer Vehicle- Assisted	Det./Spec. Assign.- Alone	Det./Spec. Assign.- Assisted	Other- Alone	Other- Assisted
DOMESTIC / OTHER DISTURBANCE	9	9	0	0	1	8	2	2	4	0	0	0	1
BURGLARY IN PROGRESS	3	3	0	0	3	0	0	1	2	0	0	0	0
ROBBERY IN PROGRESS	0	0	0	0	0	0	0	0	0	0	0	0	0
ATTEMPTING OTHER ARREST	6	5	0	0	1	5	1	2	3	0	0	0	0
CIVIL DISORDER	1	1	0	0	0	1	0	0	1	0	0	0	0
HANDLING PRISONER	10	9	0	0	0	10	3	2	1	2	1	1	0
INVEST. SUSP. PERSONS / CIRCUM.	1	1	0	0	1	0	1	0	0	0	0	0	0
AMBUSH-NO WARNING	0	0	0	0	0	0	0	0	0	0	0	0	0
MENTALLY DERANGED	2	2	2	0	0	0	0	0	0	0	0	0	2
TRAFFIC PURSUITS / STOPS	4	4	2	0	1	1	1	1	1	0	1	0	1
ALL OTHER	4	4	0	0	0	4	2	0	0	0	0	0	2
TOTALS	40	38	4	0	7	29	10	8	12	2	2	1	6

Nevada--Assaults with Injury/without Injury--UCR

SEPTEMBER 2004

Agency	Total		Firearm		Cutting Instruments		Other Dangerous weapons		Hands, Fists, Feet, Etc.		
	Assaults by weapon	With personal injury	Without personal injury	With personal injury	Without personal injury	With personal injury	Without personal injury	With personal injury	Without personal injury	With personal injury	
Boulder City PD	0	0	0	0	0	0	0	0	0	0	
Carlin PD	0	0	0	0	0	0	0	0	0	0	
Carson City SO	1	0	1	0	0	0	0	0	0	1	
Churchill Co SO	0	0	0	0	0	0	0	0	0	0	
Clark Co Schl Dist PD	0	0	0	0	0	0	0	0	0	0	
Douglas Co SO	0	0	0	0	0	0	0	0	0	0	
Elko Co SO	0	0	0	0	0	0	0	0	0	0	
Elko PD	2	0	2	0	0	0	0	0	0	2	
Esmeralda Co SO	0	0	0	0	0	0	0	0	0	0	
Eureka Co SO	0	0	0	0	0	0	0	0	0	0	
Fallon PD	0	0	0	0	0	0	0	0	0	0	
Henderson PD	0	0	0	0	0	0	0	0	0	0	
NV Highway Patrol	1	1	0	0	0	0	0	0	1	0	
Humboldt Co SO	0	0	0	0	0	0	0	0	0	0	
Lander Co SO	0	0	0	0	0	0	0	0	0	0	
Las Vegas Metro PD	18	0	18	0	1	0	0	6	0	11	
Lincoln Co SO	0	0	0	0	0	0	0	0	0	0	
Lovelock PD	0	0	0	0	0	0	0	0	0	0	
Lyon Co SO	1	0	1	0	0	0	0	0	0	1	
Mesquite PD	0	0	0	0	0	0	0	0	0	0	
Mineral Co SO	0	0	0	0	0	0	0	0	0	0	
NV Div Investigations	0	0	0	0	0	0	0	0	0	0	
North Las Vegas PD	4	1	3	0	0	0	0	1	1	2	
Nye Co SO	2	0	2	0	0	0	0	0	0	2	
Pershing Co SO	2	1	1	1	1	0	0	0	0	0	
Reno PD	4	1	3	0	0	0	0	0	1	3	
Sparks PD	3	0	3	0	1	0	0	0	0	2	
Storey Co SO	0	0	0	0	0	0	0	0	0	0	
TMCC PD	0	0	0	0	0	0	0	0	0	0	
UNLV PD	2	0	2	0	0	0	0	0	0	2	
UNR PD	0	0	0	0	0	0	0	0	0	0	
Washoe Co SO	0	0	0	0	0	0	0	0	0	0	
Washoe Co School Dist.	0	0	0	0	0	0	0	0	0	0	
West Wendover PD	0	0	0	0	0	0	0	0	0	0	
White Pine Co SO	0	0	0	0	0	0	0	0	0	0	
Winnemucca PD	0	0	0	0	0	0	0	0	0	0	
Yerington PD	0	0	0	0	0	0	0	0	0	0	
Totals	40	4	36	1	3	0	0	0	7	3	26

Nevada--Time of Assaults on Officers--UCR

SEPTEMBER 2004

Agency	2:00 AM	4:00 AM	6:00 AM	8:00 AM	10:00 AM	12:00 AM	12:01- 2:00 PM	2:00- 4:00 PM	4:00- 6:00 PM	6:00- 8:00 PM	10:00 PM	10:00- 12:00 PM
Boulder City PD	0	0	0	0	0	0	0	0	0	0	0	0
Carlin PD	0	0	0	0	0	0	0	0	0	0	0	0
Carson City SO	0	1	0	0	0	0	0	0	0	0	0	0
Churchill Co SO	0	0	0	0	0	0	0	0	0	0	0	0
Clark Co Schl Dist PD	0	0	0	0	0	0	0	0	0	0	0	0
Douglas Co SO	0	0	0	0	0	0	0	0	0	0	0	0
Elko Co SO	0	0	0	0	0	0	0	0	0	0	0	0
Elko PD	0	0	0	0	0	0	0	0	0	0	2	0
Esmeralda Co SO	0	0	0	0	0	0	0	0	0	0	0	0
Eureka Co SO	0	0	0	0	0	0	0	0	0	0	0	0
Fallon PD	0	0	0	0	0	0	0	0	0	0	0	0
Henderson PD	0	0	0	0	0	0	0	0	0	0	0	0
Highway Patrol	1	0	0	0	0	0	0	0	0	0	0	0
Humbolt Co SO	0	0	0	0	0	0	0	0	0	0	0	0
Lander Co SO	0	0	0	0	0	0	0	0	0	0	0	0
Las Vegas Metro PD	1	0	0	2	1	1	1	4	0	1	1	6
Lincoln Co SO	0	0	0	0	0	0	0	0	0	0	0	0
Lovelock PD	0	0	0	0	0	0	0	0	0	0	0	0
Lyon Co SO	0	0	0	0	0	0	0	0	0	1	0	0
Mesquite PD	0	0	0	0	0	0	0	0	0	0	0	0
Mineral Co SO	0	0	0	0	0	0	0	0	0	0	0	0
NV Div Investigations	0	0	0	0	0	0	0	0	0	0	0	0
North LV PD	0	0	0	1	0	0	0	0	0	2	1	0
Nye Co SO	1	0	0	1	0	0	0	0	0	0	0	0
Pershing Co SO	0	0	0	0	0	2	0	0	0	0	0	0
Reno PD	2	0	0	0	0	1	0	0	0	1	0	0
Sparks PD	1	0	0	0	0	0	1	0	0	0	0	1
Storey Co SO	0	0	0	0	0	0	0	0	0	0	0	0
TMCC PD	0	0	0	0	0	0	0	0	0	0	0	0
UNLV PD	0	0	0	0	0	0	2	0	0	0	0	0
UNR PD	0	0	0	0	0	0	0	0	0	0	0	0
Washoe Co SO	0	0	0	0	0	0	0	0	0	0	0	0
Washoe Co Schl PD	0	0	0	0	0	0	0	0	0	0	0	0
West Wendover PD	0	0	0	0	0	0	0	0	0	0	0	0
White Pine Co SO	0	0	0	0	0	0	0	0	0	0	0	0
Winnemucca PD	0	0	0	0	0	0	0	0	0	0	0	0
Yerington PD	0	0	0	0	0	0	0	0	0	0	0	0
Totals	6	1	0	4	1	4	4	4	0	5	4	7

Nevada -- Division Of Investigations

Arrests for Narcotics Violations

Sep-04

		10-12	13-15	16-18	19-21	22-24	25-29	30-34	35-39	40-44	45-49	50-54	55-59	60-64	>64	Total	W	B	A	I			
SALES/MANUFACTURING VIOLATIONS																							
Opium or cocaine and their derivatives (morphine, heroin, codeine)	M																0						
	F																0						
Marijuana	M																0						
	F																0						
Synthetic narcotics- Manufactured narcotics that can cause true drug addiction (demerol, meth)	M																0						
	F																0						
Other dangerous, non-narcotic, drugs (barbituates, benzderine)	M																2	2					
	F																1	1					
Sub-Total	M	0	0	0	0	0	0	0	1	0	0	0	0	0	0	1	0	0	0	0			
	F	0	0	0	0	0	0	0	1	0	0	0	0	0	0	0	0	0	0	0			
POSSESSION VIOLATIONS																							
Opium or cocaine and their derivatives (morphine, heroin, codeine)	M																1	1					
	F																0						
Marijuana	M	3						2		1	1	1						8	7	1			
	F				1			1		1							3	3					
Synthetic narcotics- Manufactured narcotics that can cause true drug addiction (demerol, meth)	M																1	1					
	F																0						
Other dangerous, non-narcotic, drugs (barbituates, benzderine)	M																5	5					
	F																2	2					
Sub-Total	M	0	0	0	0	0	3	0	1	0	0	1	0	5	1	3	0	0	1	0	0	0	0
	F	0	0	0	0	0	0	0	1	0	0	2	1	0	0	0	1	0	0	0	0	0	0
Total		0	0	0	0	0	3	0	2	0	2	3	1	5	1	3	1	0	2	0	0	0	23

2004 September

AGE, SEX, AND RACE OF PERSONS CHARGED
18 Years of age and over
(Include those released without having been formally charged)

CLASSIFICATION OF OFFENSES	SEX																Total Over 18	RACE					
		18	19	20	21	22	23	24	25-29	30-34	35-39	40-44	45-49	50-54	55-59	60-64		over 64	White	Black	American Indian or Alaskan Native	Asian or Pacific Islander	
Murder and Nonnegligent Manslaughter	01a	Male						2					2		1	1		6					
		Female								1			1					3	9				
Manslaughter by Negligence	01b	Male								1								1					
		Female																0	1				
Forcible Rape	02	Male		2			1	1	1	3	1	2	1	1	1			14					
		Female																0	8	4	1	1	
Robbery	03	Male	9	17	2	2		4	2	11	6	8	7		3		2	73					
		Female			1		1	2	1	1		2	1	1				10	45	37	1		
Aggravated Assault (Return A-4a-d)	04	Male	6	10	10	12	13	9	13	36	27	32	30	25	6	5	2	5	241				
		Female	5	1	2	3	2	3	4	12	5	10	7	9	4	1	2		70	240	59	6	6
Burglary--Breaking or Entering	05	Male	18	12	10	17	10	14	11	41	36	29	37	10	3	3		251					
		Female	4	2	4	6	11	5	5	7	14	14	9	10	1	1		93	259	71	2	12	
Larceny--Theft (except Motor Vehicle Theft)	06	Male	28	24	24	29	25	16	11	54	71	78	77	53	26	19	7	2	544				
		Female	12	8	18	10	17	8	18	41	35	35	17	9	6		3	272	595	185	8	28	
Motor Vehicle Theft	07	Male	13	7	11	4	5	5	8	15	17	18	8	8	3			122					
		Female	2	2	1	4		1	2	8	2	3	2	1				28	111	38		1	
Other Assaults (Return A-4e)	08	Male	16	28	25	28	38	31	43	119	161	141	125	75	41	19	9	15	914				
		Female	11	16	10	24	18	17	12	37	48	43	34	22	16	11	5	3	327	925	268	11	37
Arson	09	Male	1	2					1									5					
		Female																0	4	1			
Forgery & Counterfeiting	10	Male		1			1	2	1	11	3	7	5	2	2	1	1	37					
		Female	2		1		1			7	4	2	2		2	1		22	48	9	1	1	
Fraud	11	Male		4	2	2	1	7	6	15	23	22	29	13	6	3	1	134					
		Female	1	1	4	3	2	7	2	8	8	13	11	4	6		1	1	72	157	41	3	5
Embezzlement	12	Male	1	1		1				1		3	1	1		1		11					
		Female	2	1	1				1			2	2					9	17	2		1	
Stolen Property; Buying, Receiving, Possessing	13	Male	10	5	10	7	7	6	5	31	20	15	9	8	1	2	1	1	138				
		Female	1	1	3	2		2		6	5	4	2		1			27	140	21		4	
Vandalism	14	Male	11	5	3	2	3	4	3	10	11	6	12	7	1	2	1	81					
		Female	1	1		1			1	2	1	4	1		3			14	78	15	1	1	
Weapons; Carrying, Possessing, etc.	15	Male	13	9	9	8	3	9	6	24	8	6	10	6	8	2	1	1	123				
		Female		3	4	3	1			2		2	1	1				17	111	28	1		
Prostitution and Commercialized Vice	16	Male				1	2		3	5	9	7	5	3	6	1	2	4	48				
		Female	16	35	19	45	35	24	15	76	42	35	44	17	2			405	294	141	3	15	
Sex Offenses (except Forcible Rape and Prostitution)	17	Male	4	1	2	4	5		4	16	14	14	17	13	9	3	4	110					
		Female				1	1		1	3	6	5	3	3				24	112	17		5	
Drug Abuse Violations	18	Male	37	49	44	26	39	35	22	125	84	62	65	44	14	10	3	0	659				
Grand Total	180	Female	8	9	9	5	9	4	7	24	27	32	17	10	3	1	0	0	165	568	230	5	21
(1) Sale/Manufacturing Subtotal	180	Male	5	21	11	5	5	9	4	31	27	17	16	8	2	4	0	0	165				
		Female	1	1	2	0	1	1	3	4	3	8	2	1	0	1	0	0	28	125	62	3	3
Opium or Cocaine and Their Derivatives (Morphine, Heroin, Codeine)	a	Male	1	6	3	2	3	2	1	16	10	9	7	6				67					
		Female							1	2	1	4	1	1				10	37	40			
Marijuana	b	Male	2	9	6	1	1	5	2	5	7	3	2			1		44					
		Female	1	1	2							2						6	30	17	1	2	
Synthetic Narcotics--Manufactured Narcotics Which Cause True Drug Addiction (Demerol, Methad)	c	Male	1		1	1				7	8	5	6	2	1			32					
		Female						2	1	2	2	1			1			9	38	2	1		
Other Dangerous Non-Narcotic Drugs (Barbiturates, Benzedrine)	d	Male	1	6	1	1	1	2	1	3	2		1		1	2		22					
		Female				1	1		1									3	20	3	1	1	

AGE, SEX, AND RACE OF PERSONS CHARGED

2004 September

18 Years of age and under

(Count all Offences even if the Arrest is based on only one charge)

CLASSIFICATION OF OFFENSES	SEX	Under 10	10-12	13-14	15	16	17	Total Under 18	RACE			
									White	Black	American Indian or Alaskan Native	Asian or Pacific Islander
Murder and Nonnegligent Manslaughter 01a	Male							0				
	Female					1		1	1			
Manslaughter by Negligence 01b	Male			1		1	1	3				
	Female			1	1			2	4	1		
Forcible Rape 02	Male			1				1				
	Female							0	1			
Robbery 03	Male		2	6	3	3	5	19				
	Female					2		2	4	17		
Aggravated Assault (Return A-4a-d) 04	Male	2	6	9	9	7	11	44				
	Female		3	3	2	4	3	15	49	10		
Burglary--Breaking or Entering 05	Male		2	3	6	9	7	27				
	Female	1	2	2	1		1	7	29	5		
Larceny--Theft (except Motor Vehicle Theft) 06	Male	3	20	34	33	17	29	136				
	Female		7	34	17	20	14	92	154	63	1	10
Motor Vehicle Theft 07	Male			3			5	8				
	Female				3		1	4	11	8	1	
Other Assaults (Return A-4e) 08	Male	6	5	22	20	30	21	104	5			
	Female		4	13	10	5	3	35	105	25	1	3
Arson 09	Male		11	5	5	4	2	27				
	Female		2	6	3	3	2	16	24	19		
Forgery & Counterfeiting 10	Male							0				
	Female							0				
Fraud 11	Male				2		2	4				
	Female			2				2	5	3		
Embezzlement 12	Male						2	2				
	Female							0	2			
Stolen Property; Buying, Receiving, Possessing 13	Male		5	7	4	4	3	23				
	Female			1	1	1	1	4	16	10		1
Vandalism 14	Male		6	9	6	13	13	47				
	Female			2	3	2		7	41	10		3
Weapons; Carrying, Possessing, etc. 15	Male		6	8	9	2	14	39				
	Female			2	1			3	35	5	1	1
Prostitution and Commercialized Vice 16	Male							0				
	Female			1	2	3	5	11	5	6		
Sex Offenses (except Forcible Rape and Prostitution) 17	Male		2	7	1	1		11				
	Female							0	6	5		
Drug Abuse Violations Grand Total 18	Male	1	0	18	21	27	29	96				
	Female	0	0	4	8	7	9	28	97	21	1	5
(1) Sale/Manufacturing Subtotal 180	Male	0	0	3	0	3	3	9				
	Female	0	0	0	0	2	0	2	8	1	1	1
Opium or Cocaine and Their Derivatives (Morphine, Heroin, Codeine) a	Male							0				
	Female							0				
Marijuana b	Male			3		2	1	6				
	Female					1		1	5	1		1
Synthetic Narcotics-Manufactured Narcotics Cause True Drug Addiction (Demerol) c	Male						1	1				
	Female							0	1			
Other Dangerous Non-Narcotic Drugs (Barbiturates, Benzedrine) d	Male					1	1	2			1	
	Female					1		1	2		1	
(2) Possession - Subtotal 185	Male	1	0	15	21	24	26	87				
	Female	0	0	4	8	5	9	26	89	20	0	4
Opium or Cocaine and Their Derivatives (Morphine, Heroin, Codeine) e	Male				1		1	2				
	Female					1		1	2	1		
Marijuana f	Male			13	17	23	16	69				
	Female			4	7	3	8	22	70	17		4
Synthetic Narcotics-Manufactured Narcotics Cause True Drug Addiction (Demerol) g	Male	1			2		3	6				
	Female						1	1	5	2		
Other Dangerous Non-Narcotic Drugs (Barbiturates, Benzedrine) h	Male			2	1	1	6	10				
	Female				1	1		2	12			

CLASSIFICATION OF OFFENSES												
		SEX										
Gambling Total	19	Male	0	0	0	0	0	0	0	0	0	0
		Female	0	0	0	0	0	0	0	0	0	0
Bookmaking (Horses and Sports Book)	a	Male						0				
		Female						0				
Numbers and Lottery	b	Male						0				
		Female						0				
All Other Gambling	c	Male						0				
		Female						0				
Offenses Against Family and Children	20	Male			1	1	1	3				
		Female						0	2	1		
Driving Under the Influence	21	Male			1	3	1	5				
		Female				1	3	4	9			
Liquor Laws	22	Male		1	6	5	21	37	70			
		Female			3	2	9	7	21	79	8	4
Drunkenness	23	Male					4	4				
		Female				1	2	3	7			
Disorderly Conduct	24	Male	1	4	23	18	8	8	62			
		Female	1	3	5		4	2	15	60	48	2
Vagrancy	25	Male				1		1	2			
		Female	1						1	1	2	
All Other Offenses (except Traffic) Total	26	Male	4	9	45	41	46	41	186			
		Female	1	3	14	8	21	8	55	181	51	4
Suspicion	27	Male			2			2	4			
		Female							0	4		
Curfew and Loitering Law Violatic	28	Male		4	32	36	41	59	172			
		Female		1	14	20	30	31	96	196	56	16
Runaway	29	Male			9	8	18	10	45	2		
		Female		1	11	14	13	8	47	77	9	2
GRAND TOTAL			21	109	368	326	388	413	1625	1212	383	11
												52

Department of Motor Vehicles and Public Safety
808 West Nye Lane
Carson City NV 89703

Uniform Crime Reporting

Date

Disposition of Juveniles

TOTAL

1. Handled within Department and released.
2. Referred to Juvenile court.
3. Referred to welfare agency.
4. Released to other police agency.
5. Referred to criminal or adult court.

Nevada UCR
*Footnotes / Exceptions

SEPTEMBER 2004

Table 1

--Nevada figures are annualized projections.

--"Assault" does not include simple assaults to allow direct comparison between the Nevada rate and the National rate for this Index offense. See Table 8 for a count of all assaults.

Table 2

--The LV Fire Department reports "Arson" offenses for the City of Las Vegas. The population figure for this agency represents jurisdiction and is not added to the county total. Similarly, the School District Police Departments in Clark and Washoe Counties are not added to county population estimates as they represent persons served (student enrollment plus staff.)

--Assault data in this table includes ALL assaults (aggravated and simple) reported for the current month.

--County crime rates are calculated following subtraction of populations of jurisdictions failing to report.

Table 3

-- In the "Nevada vs National Index Crime and Clearance Rates" sections, the "Assaults" numbers do not include simple assaults following FBI guidelines. Therefore, they may be compared directly to National rates.

-- National crime rate figures are the latest available for comparative use (2002). Nevada figures are annualized projections.

Table 13

--At various times, property values recovered will exceed values stolen for the current reporting period.

General Notes:

■ The following agency(ies) was unable to submit reports for this month:

-- Any late reports not submitted in time for this publication will be incorporated in to the year-to-date totals in subsequent reports.