

**Disclaimer: The following information is preliminary and cannot be certified until it is published in the annual report, Crime and Justice in Nevada, which will be available after July 1, 2005.**

**UNIFORM CRIME REPORTING PROGRAM**  
**UCR STATISTICAL DATA VERIFICATION FORM**

As an agency administrator or designee for the \_\_\_\_\_, I have  
(Name of Agency)  
reviewed the UCR monthly statistics for **October 2004** which includes all UCR data submitted  
year to date. Based upon my or my designee's review and validation of same, I find that:

All data contained in the report for my agency is accurate and complete and may be  
released and made part of UCR publications for future distribution to the public and other  
interested UCR data subscribers.

Data contained in the report is inaccurate or incomplete and may not be published or  
released at this time. (If this choice is selected, please provide the reason in the space  
provided below.)

Reason: \_\_\_\_\_  
\_\_\_\_\_  
\_\_\_\_\_

**The corrected data will be supplied to the UCR Program by: \_\_\_\_\_.**  
**(Date)**

This document must be signed and mailed to the Uniform Crime Reporting Program, 808 W.  
Nye Lane, Carson City, Nevada 89703 or faxed to (775) 687-1843 by **May 15, 2005**.

\_\_\_\_\_  
**Signature of Agency Administrator (or designee)**

\_\_\_\_\_  
**Name/Title of Agency Administrator (print or type)**

\_\_\_\_\_  
**Agency's Name/Location**

\_\_\_\_\_  
**Date**

Department of Public Safety  
Nevada Highway Patrol  
Records and Identification Bureau

# Monthly Report



**October**

**2004**

**George Togliatti, Director  
Department of Public Safety**

**Colonel David Hosmer, Chief  
Nevada Highway Patrol**

**Lt. Brian Sanchez, Manager  
Records and Identification Bureau**

**Phyllis Yancey, Administrative Assistant II  
Tenna Herman, Management Analyst I**

**Prepared by:  
Records and Identification Bureau  
Uniform Crime Reporting  
808 W. Nye Lane  
Carson City, Nevada 89703  
(775) 687-1600**

# Nevada UCR Definitions / Explanations

---

## Uniform Crime Reporting Program

The UCR program is a nationwide, cooperative, statistical effort by over 17,000 city, county and state law enforcement agencies that voluntarily report data on crimes brought to their attention. Law enforcement agencies active in the national program represent 95% of the total population of the United States. While the program's primary objective is to generate a reliable set of crime statistics for use in law enforcement administration, operation and management, its data has over the years become one of the country's leading social indicators.

In Nevada, 36 agencies are currently reporting UCR data to the statewide program representing nearly 99% of its population. Rather than submitting directly to the FBI, local agencies must submit crime data to the state UCR Repository, which compiles, analyzes and submits copies of the reports to the FBI. The Nevada UCR Program prides itself on its responsiveness to local contributing agencies that previously received limited feedback for their efforts. The Nevada program is also responsible for producing and distributing periodic reports of the information contained in its database. As its database has grown, the program's utility has become even more apparent.

Eight offenses serve as an index for gauging fluctuations in overall volumes and rates of crime. Known collectively as the " Crime Index, " these offenses include *the violent crimes of murder, rape, robbery and assault and the property crimes of burglary, larceny, motor vehicle theft and arson*. These offenses were selected as a grouped measuring device because they represent the most common crime problems. They are all serious crimes; either by their very nature or due to the volume and frequency with which they occur.

## Index Crimes Definitions

### Murder and Non-negligent Manslaughter

Murder and non negligent manslaughter, as defined in the Uniform Crime Reporting Program, is the willful (non-negligent) killing of a human being by another.

The classification of this offense, as for all other Crime Index offenses, is based solely on police investigation as opposed to the determination of a court, medical examiner, coroner, jury or other judicial entity. Not included in the count for this offense classification are deaths caused by negligence, suicide or accident, justifiable homicides and attempts to murder or assaults to murder. These are scored as aggravated assaults.

# Nevada UCR Definitions / Explanations

---

## **Forcible Rape**

Forcible rape, as defined in the program, is the carnal knowledge of a female forcibly and against her will. Assaults or attempts to commit rape by force or threat of force are also included; however, statutory rape (without force) and other sex offenses are excluded.

## **Robbery**

Robbery is the taking or attempting to take anything of value from the care, custody or control of a person or persons by force or threat of force or violence and/or by putting the victim in fear.

## **Aggravated Assault**

Aggravated assault is an unlawful attack by one person upon another for the purpose of inflicting severe or aggravated bodily injury. This type of assault is usually accompanied by the use of a weapon or by means likely to produce death or great bodily harm. Attempts are included since it is not necessary that an injury result when a gun, knife or other weapon is used which could and probably would result in serious personal injury if the crime were successfully completed

## **Burglary**

The Uniform Crime Reporting Program defines burglary as the unlawful entry of a structure to commit a felony or theft. The use of force to gain entry is not required to classify an offense as burglary. Burglary in this program is categorized into three sub classifications: forcible entry, unlawful entry where no force is used and attempted forcible entry.

## **Larceny-Theft**

Larceny-theft is the unlawful taking, carrying, leading, or riding away of property from the possession or constructive possession of another. It includes crimes such as shoplifting, pocket picking, purse-snatching, thefts from motor vehicles, thefts of motor vehicle parts and accessories, and bicycle thefts, etc., in which no use of force, violence, or fraud occurs. In the UCR Program, this crime category does not include embezzlement, "con" games, forgery, and worthless checks. Motor vehicle theft is also excluded from this category inasmuch as it is a separate Crime Index offense.

## **Motor Vehicle Theft**

Defined as the theft or attempted theft of a motor vehicle, this offense category includes the stealing of automobiles, trucks, buses, motorcycles, motor scooters, snowmobiles, etc. The definition excludes the taking of a motor vehicle for temporary use by those persons having lawful access.

# Nevada UCR Definitions / Explanations

---

## Arson

Arson is defined by the Uniform Crime Reporting Program as any willful or malicious burning or attempt to burn, with or without intent to defraud, a dwelling house, public building, a motor vehicle or aircraft, personal property of another, etc. Only fires determined through investigation to have been willfully or maliciously set are classified as arsons. Fires of suspicious or unknown origins are excluded.

## Population Estimates

State, county and incorporated city population estimates are prepared and reviewed prior to the end of each calendar year for certification by the governor by March 1. The Nevada Department of Taxation and Nevada State Demographer, Bureau of Business and Economic Research, College of Business Administration, University of Nevada, Reno, prepares these estimates.

## Crime Rates

Crime rates involve the number of Index Crimes per unit of population, usually per 100,000 persons. Because Nevada has such a low population, a rate per 1,000 persons is used to reflect a more realistic volume. No attempt is made to incorporate transient populations or other factors that contribute to the ratio and types of crime in given areas. Any effort to make comparisons of crime rates between areas should be tempered by these population and environmental variables.

Crime rates are one of the most meaningful statistical elements. Computation of crime rates per 1,000 population is achieved by dividing the community's population by 1,000, then dividing the number of offenses in each class by that number. The answer is the number of offenses per 1,000 population and is the crime rate for that particular offense. In Table 2, the County Total Crime Rate is computed after subtracting the population figure for all non-reporting agencies for the current month.

The index offense "Aggravated Assault" is an item of special interest to users of Nevada's UCR report. In Tables 1 & 3, where Nevada and National crime rates are compared, "simple assaults" are subtracted from the total of all assaults following FBI UCR rules, thus allowing for direct comparison. However, total assaults (simple and aggravated) are also presented in the Nevada report. This is because the Nevada UCR staff believes this figure is an important indicator of risk for citizens and it presents a more balanced picture of this portion of the crime index to law enforcement personnel.

The Federal Bureau of Investigation, Uniform Crime Reporting Section, publishes national rates.

## Clearance Rates

The percentage of crimes cleared is obtained by dividing the number of offenses cleared by the number of offenses known. This number is then multiplied by 100.

## Nevada--Statewide Summary--UCR Index Crimes

### October 2004

Offense	Crimes this Month	# Cleared this Month	% Cleared this Month	Crimes this YTD	# Cleared this YTD	% Cleared this YTD	October Crimes 2003	October Cleared 2003	% Cleared October 2003	2004 NV Rate / 1,000 (Proj) *	2003 NV Rate / 1,000	2002 Natl. Rate / 1,000
<b>Murder</b>	15	5	33	150	95	63	10	5	50	0.08	0.09	0.56
<b>Rape</b>	90	22	24	781	191	24	74	26	35	0.41	0.39	0.32
<b>Robbery</b>	484	88	18	4,093	762	19	502	101	20	2.14	2.36	1.48
<b>Assault *</b>	699	254	36	7,032	2,498	36	693	276	40	3.67	3.41	3.19
<b>Burglary</b>	1,899	388	20	19,228	3,999	21	1,846	405	22	10.05	9.96	7.41
<b>Larceny</b>	4,210	960	23	43,740	10,206	23	4,638	1,207	26	22.86	24.17	24.85
<b>MV Theft</b>	1,879	253	13	18,589	2,270	12	1,566	240	15	9.71	9.45	4.31
<b>Arson</b>	44	9	20	576	67	12	40	4	10	0.30	0.26	0.35
<b>Total</b>	9,320	1,979	21	94,189	20,088	21	9,369	2,264	24	49.22	50.10	42.47

\* The projected Crime Rate for Assaults is computed after subtracting Simple Assaults from the total for all Assaults following FBI guidelines. Therefore, this rate may be compared directly to the National Rate. See Table 3 and the "Footnotes/Exceptions page for further information.

# Nevada UCR - - Monthly Crime/ Clearance Summary - - All Crimes

Contributing Agency	Est. Pop	Murder		Rape		Robbery		Assault		Burglary		Larceny		MV Theft		Arson		Total Crimes	Crime Rate	Clearances	Clearance Rate
<b>Carson County</b>																		<b>October 2004</b>			
Carson SO	54,844	0	0	0	0	0	0	68	46	34	12	87	26	21	8	0	0	210	3.83	92	43.8%
County Total	54,844	0	0	0	0	0	0	68	46	34	12	87	26	21	8	0	0	210	3.83	92	43.8%
<b>Churchill County</b>																					
Churchill SO	16,939	0	0	0	1	0	0	14	17	1	7	10	4	4	2	0	0	29	1.71	31	106.9%
Fallon PD	8,178	0	0	0	0	0	1	26	16	4	0	33	8	3	3	0	0	66	8.07	28	42.4%
County Total	25,117	0	0	0	1	0	1	40	33	5	7	43	12	7	5	0	0	95	3.78	59	62.1%
<b>Clark County</b>																					
Boulder PD	14,842	0	0	0	0	0	0	0	0	15	1	9	1	5	0	0	0	29	1.95	2	6.9%
Clark Co. Schools PD*	284,512	0	0	4	0	1	1	105	67	34	7	83	20	6	0	3	2	236	0.83	97	41.1%
Henderson	209,486	0	1	5	3	12	2	210	126	159	24	299	50	133	7	13	4	831	3.97	217	26.1%
LV Metro PD	1,176,146	13	3	57	13	353	65	2,210	479	1,183	260	2,256	514	1,324	153	9	0	7,405	6.30	1,487	20.1%
LV Fire Dept*																5	0	5	N/A	0	0.0%
Mesquite	13,216	0	0	0	0	0	0	15	17	1	1	27	10	9	5	0	0	52	3.93	33	63.5%
North Las Vegas PD	135,967	1	0	5	2	60	5	211	99	124	16	219	50	147	6	1	0	768	5.65	178	23.2%
UNLV PD*	26,345	0	0	0	0	0	0	3	0	6	1	45	2	5	0	0	0	59	2.24	3	5.1%
County Total	1,549,657	14	4	71	18	426	73	2,754	788	1,522	310	2,938	647	1,629	171	31	6	9,385	6.06	2,017	21.5%
<b>Douglas County</b>																					
Douglas SO	44,212	0	0	0	0	0	0	54	35	20	2	85	18	9	6	2	0	170	3.85	61	35.9%
County Total	44,212	0	0	0	0	0	0	54	35	20	2	85	18	9	6	2	0	170	3.85	61	35.9%

\*Population figure not included in county total  
Table 2

# Nevada UCR - - Monthly Crime/ Clearance Summary - - All Crimes

Contributing Agency	Est. Pop	Murder		Rape		Robbery		Assault		Burglary		Larceny		MV Theft		Arson		Total Crimes	Crime Rate	Clearances	Clearance Rate
<b>Elko County</b>																		<b>October 2004</b>			
Elko SO	23,153	0	0	0	0	0	0	2	2	15	2	14	0	2	1	0	0	33	1.43	5	15.2%
Carlin PD	2,074	0	0	0	0	0	0	2	2	0	0	4	0	0	0	0	0	6	2.89	2	33.3%
Elko PD	16,690	0	0	0	0	3	1	29	9	12	3	27	3	4	0	0	0	75	4.49	16	21.3%
WestWendover PD	4,661	0	0	0	0	1	0	5	5	2	1	7	1	3	2	0	0	18	3.86	9	50.0%
<b>County Total</b>	<b>46,578</b>	<b>0</b>	<b>0</b>	<b>0</b>	<b>0</b>	<b>4</b>	<b>1</b>	<b>38</b>	<b>18</b>	<b>29</b>	<b>6</b>	<b>52</b>	<b>4</b>	<b>9</b>	<b>3</b>	<b>0</b>	<b>0</b>	<b>132</b>	<b>2.83</b>	<b>32</b>	<b>24.2%</b>
<b>Esmeralda County</b>																					
Esmeralda SO	1,125	0	0	0	0	0	0	0	0	0	0	3	1	0	0	0	0	3	2.67	1	33.3%
<b>County Total</b>	<b>1,125</b>	<b>0</b>	<b>0</b>	<b>0</b>	<b>0</b>	<b>0</b>	<b>0</b>	<b>0</b>	<b>0</b>	<b>0</b>	<b>0</b>	<b>3</b>	<b>1</b>	<b>0</b>	<b>0</b>	<b>0</b>	<b>0</b>	<b>3</b>	<b>2.67</b>	<b>1</b>	<b>33.3%</b>
<b>Eureka County</b>																					
Eureka SO	1,384	0	0	0	0	0	0	2	1	1	0	1	0	0	0	0	0	4	2.89	1	25.0%
<b>County Total</b>	<b>1,384</b>	<b>0</b>	<b>0</b>	<b>0</b>	<b>0</b>	<b>0</b>	<b>0</b>	<b>2</b>	<b>1</b>	<b>1</b>	<b>0</b>	<b>1</b>	<b>0</b>	<b>0</b>	<b>0</b>	<b>0</b>	<b>0</b>	<b>4</b>	<b>2.89</b>	<b>1</b>	<b>25.0%</b>
<b>Humboldt County</b>																					
Humboldt SO	9,074	0	0	0	0	0	0	2	0	0	0	5	2	2	1	1	1	10	1.10	4	40.0%
Winnemucca PD	7,234	0	0	0	0	0	0	9	9	2	1	11	5	3	1	0	0	25	3.46	16	64.0%
<b>County Total</b>	<b>16,308</b>	<b>0</b>	<b>0</b>	<b>0</b>	<b>0</b>	<b>0</b>	<b>0</b>	<b>11</b>	<b>9</b>	<b>2</b>	<b>1</b>	<b>16</b>	<b>7</b>	<b>5</b>	<b>2</b>	<b>1</b>	<b>1</b>	<b>35</b>	<b>2.15</b>	<b>20</b>	<b>57.1%</b>

\*Population figure not included in county total  
Table 2

# Nevada UCR - - Monthly Crime/ Clearance Summary - - All Crimes

Contributing Agency	Est. Pop	Murder		Rape		Robbery		Assault		Burglary		Larceny		MV Theft		Arson		Total Crimes	Crime Rate	Clearances	Clearance Rate
<b>Lander County</b>																		<b>October 2004</b>			
Lander SO	5,547	0	0	0	0	0	0	0	0	0	0	0	0	0	0	0	0	0	0.00	0	0.0%
<b>County Total</b>	<b>5,547</b>	0	0	0	0	0	0	0	0	0	0	0	0	0	0	0	0	0	0.00	0	0.0%
<b>Lincoln County</b>																					
Lincoln SO	3,879	0	0	0	0	0	0	6	3	2	0	3	1	1	1	0	0	12	3.09	5	41.7%
<b>County Total</b>	<b>3,879</b>	0	0	0	0	0	0	6	3	2	0	3	1	1	1	0	0	12	3.09	5	41.7%
<b>Lyon County</b>																					
Lyon SO	35,917	0	0	0	0	2	0	48	48	20	3	39	13	4	3	0	0	113	3.15	67	59.3%
Yerington PD	2,859	0	0	0	0	0	0	6	3	2	1	3	2	0	0	0	0	11	3.85	6	54.5%
<b>County Total</b>	<b>38,776</b>	0	0	0	0	2	0	54	51	22	4	42	15	4	3	0	0	124	3.20	73	58.9%
<b>Mineral County</b>																					
Mineral SO	4,695	0	0	0	0	0	0	2	2	2	0	1	1	0	0	0	0	5	1.06	3	60.0%
<b>County Total</b>	<b>4,695</b>	0	0	0	0	0	0	2	2	2	0	1	1	0	0	0	0	5	1.06	3	60.0%
<b>Nye County</b>																					
Nye SO	35,039	0	0	1	1	0	0	10	6	14	3	44	10	29	21	0	0	98	2.80	41	41.8%
<b>County Total</b>	<b>35,039</b>	0	0	1	1	0	0	10	6	14	3	44	10	29	21	0	0	98	2.80	41	41.8%

\*Population figure not included in county total  
Table 2

# Nevada UCR - - Monthly Crime/ Clearance Summary - - All Crimes

Contributing Agency	Est. Pop	Murder		Rape		Robbery		Assault		Burglary		Larceny		MV Theft		Arson		Total Crimes	Crime Rate	Clearances	Clearance Rate
<b>Pershing County</b>																		<b>October 2004</b>			
Pershing SO	4,670	0	0	2	1	0	0	5	4	1	0	5	3	0	0	0	0	13	2.78	8	61.5%
Lovelock PD	2,267	0	0	0	0	0	0	4	0	5	4	4	4	0	1	0	0	13	5.73	9	69.2%
<b>County Total</b>	<b>6,937</b>	<b>0</b>	<b>0</b>	<b>2</b>	<b>1</b>	<b>0</b>	<b>0</b>	<b>9</b>	<b>4</b>	<b>6</b>	<b>4</b>	<b>9</b>	<b>7</b>	<b>0</b>	<b>1</b>	<b>0</b>	<b>0</b>	<b>26</b>	<b>3.75</b>	<b>17</b>	<b>65.4%</b>
<b>Storey County</b>																					
Storey	3,639	0	0	0	0	0	0	6	4	1	1	3	0	0	0	0	0	10	2.75	5	50.0%
<b>County Total</b>	<b>3,639</b>	<b>0</b>	<b>0</b>	<b>0</b>	<b>0</b>	<b>0</b>	<b>0</b>	<b>6</b>	<b>4</b>	<b>1</b>	<b>1</b>	<b>3</b>	<b>0</b>	<b>0</b>	<b>0</b>	<b>0</b>	<b>0</b>	<b>10</b>	<b>2.75</b>	<b>5</b>	<b>50.0%</b>
<b>Washoe County</b>																					
Washoe SO	96,334	1	1	0	0	2	1	73	28	29	11	58	5	10	1	0	0	173	1.80	47	27.2%
Reno PD	187,834	0	0	13	1	40	7	399	205	141	7	563	153	122	19	6	2	1,284	6.84	394	30.7%
Sparks PD	75,255	0	0	3	0	10	5	87	74	57	19	198	34	32	11	0	0	387	5.14	143	37.0%
UNR PD*	15,000	0	0	0	0	0	0	3	1	5	1	9	3	1	1	0	0	18	1.20	6	33.3%
Washoe Co Schi PD*	66,515	0	0	0	0	0	0	0	0	2	0	40	14	0	0	4	0	46	0.69	14	30.4%
TMCC PD*	11,878	0	0	0	0	0	0	0	0	1	0	1	0	0	0	0	0	2	0.17	0	0.0%
<b>County Total</b>	<b>359,423</b>	<b>1</b>	<b>1</b>	<b>16</b>	<b>1</b>	<b>52</b>	<b>13</b>	<b>562</b>	<b>308</b>	<b>235</b>	<b>38</b>	<b>869</b>	<b>209</b>	<b>165</b>	<b>32</b>	<b>10</b>	<b>2</b>	<b>1,910</b>	<b>5.31</b>	<b>604</b>	<b>31.6%</b>
<b>White Pine County</b>																					
White Pine SO	8,863	0	0	0	0	0	0	7	7	4	0	14	2	0	0	0	0	25	2.82	9	36.0%
<b>County Total</b>	<b>8,863</b>	<b>0</b>	<b>0</b>	<b>0</b>	<b>0</b>	<b>0</b>	<b>0</b>	<b>7</b>	<b>7</b>	<b>4</b>	<b>0</b>	<b>14</b>	<b>2</b>	<b>0</b>	<b>0</b>	<b>0</b>	<b>0</b>	<b>25</b>	<b>2.82</b>	<b>9</b>	<b>36.0%</b>
<b>Grand Total</b>	<b>2,206,023</b>	<b>15</b>	<b>5</b>	<b>90</b>	<b>22</b>	<b>484</b>	<b>88</b>	<b>3,623</b>	<b>1,315</b>	<b>1,899</b>	<b>388</b>	<b>4,210</b>	<b>960</b>	<b>1,879</b>	<b>253</b>	<b>44</b>	<b>9</b>	<b>12,244</b>	<b>5.55</b>	<b>3,040</b>	<b>24.8%</b>

\*Population figure not included in county total  
Table 2

# Nevada UCR - - **Monthly Crimes/Clearances Summary** - - Index Crimes

October 2004

Est. Pop	Murder		Rape		Robbery		Assault		Burglary		Larceny		MV Theft		Arson		Total Crimes	Crime Rate	Total Clear	Clearance Rate	
<b>Statewide Totals</b>																					
<b>(Crimes/Clearances)</b>	2,296,563	15	5	90	22	484	88	699	254	1899	388	4210	960	1879	253	44	9	9320	4.06	1979	21.23

## Nevada (Projected 2004) vs National (2002) Index Crime Rates

*(per 1,000 population)*

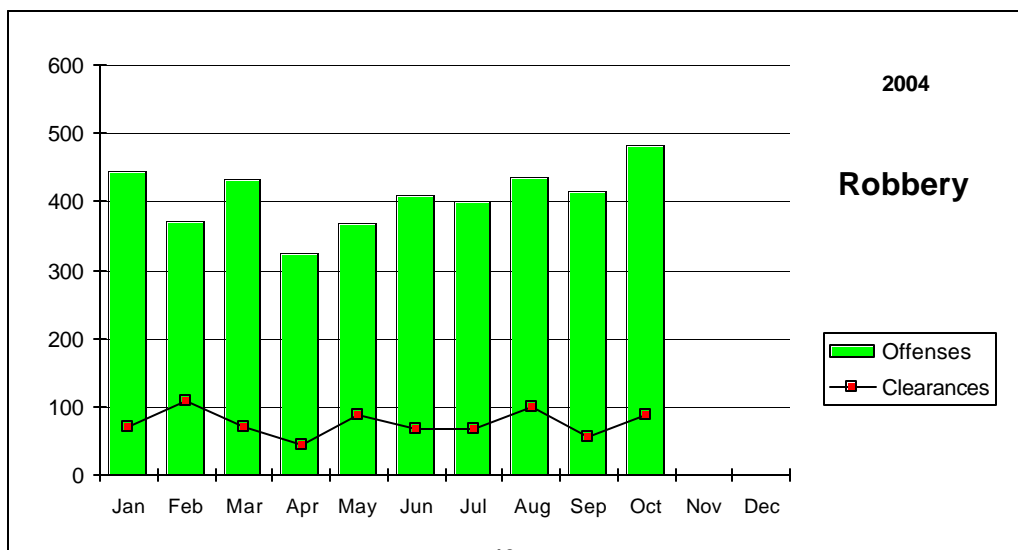
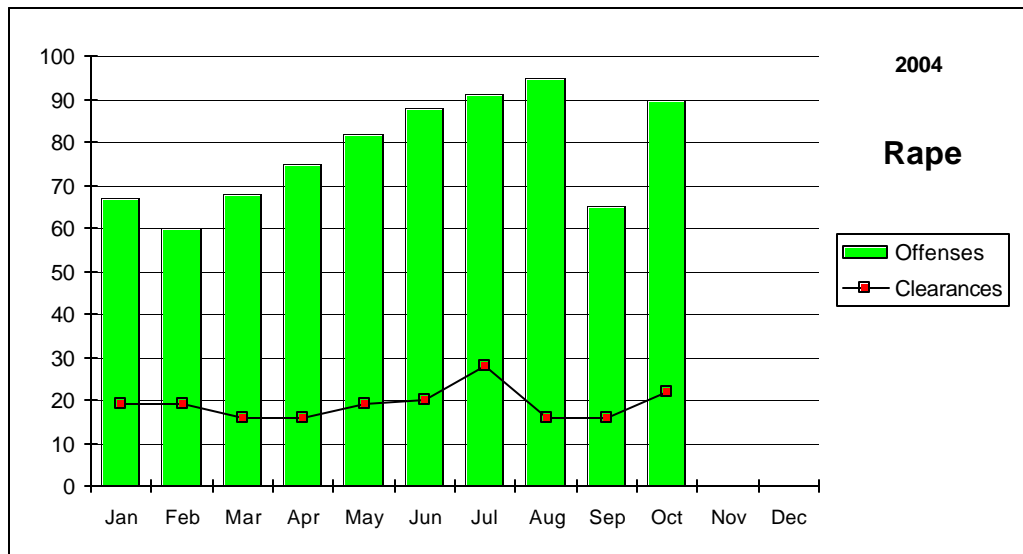
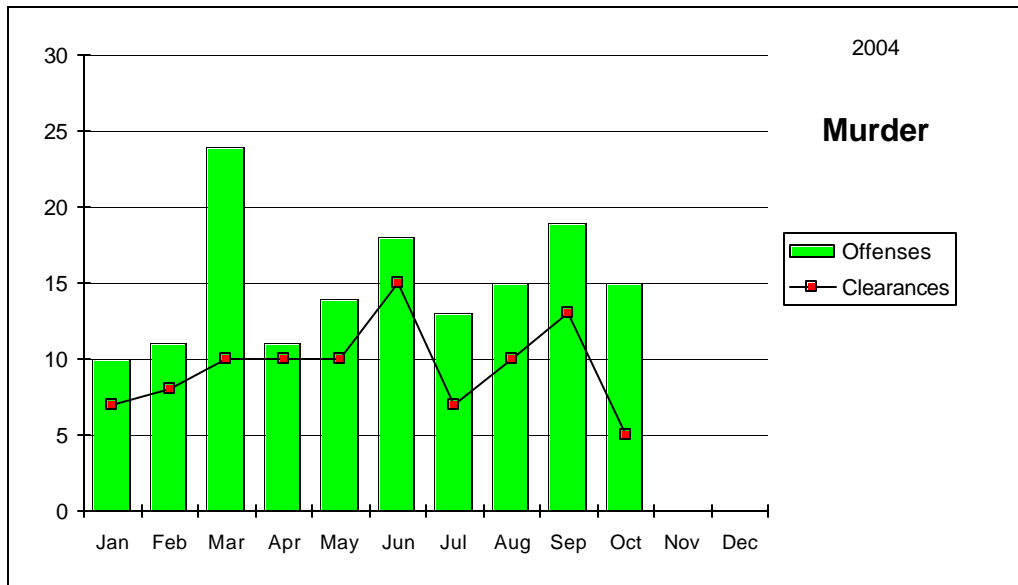
	Murder	Rape	Robbery	Assault	Burglary	Larceny	MV Theft	Arson	Crime Rate
<b>Nevada</b>	0.08	0.41	2.14	3.67	10.05	22.86	9.71	0.30	49.22
<b>National</b>	0.56	0.32	1.48	3.19	7.41	24.85	4.31	0.35	41.85

## Nevada (Projected 2004) vs National (2002) Crime Clearance Rates

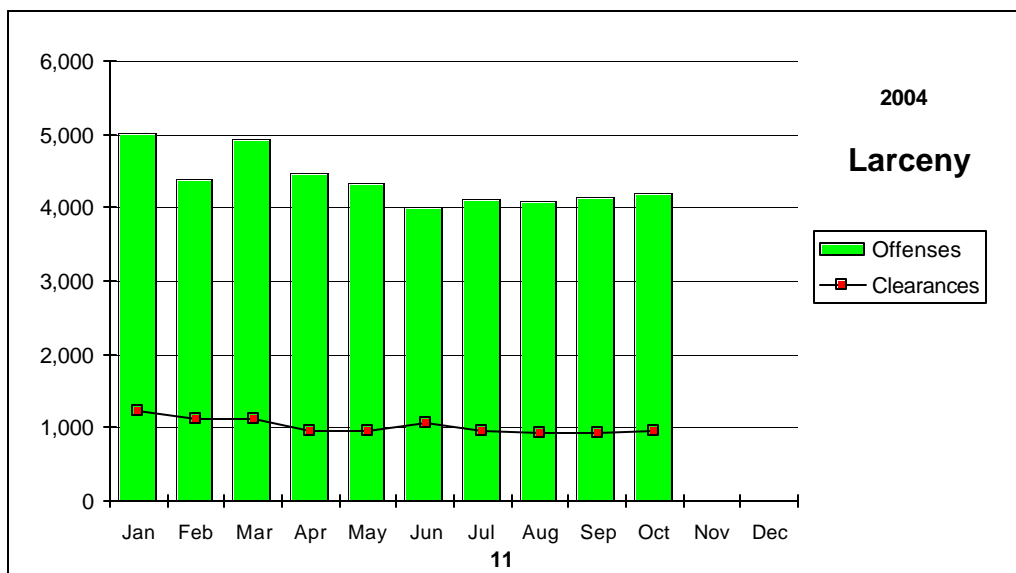
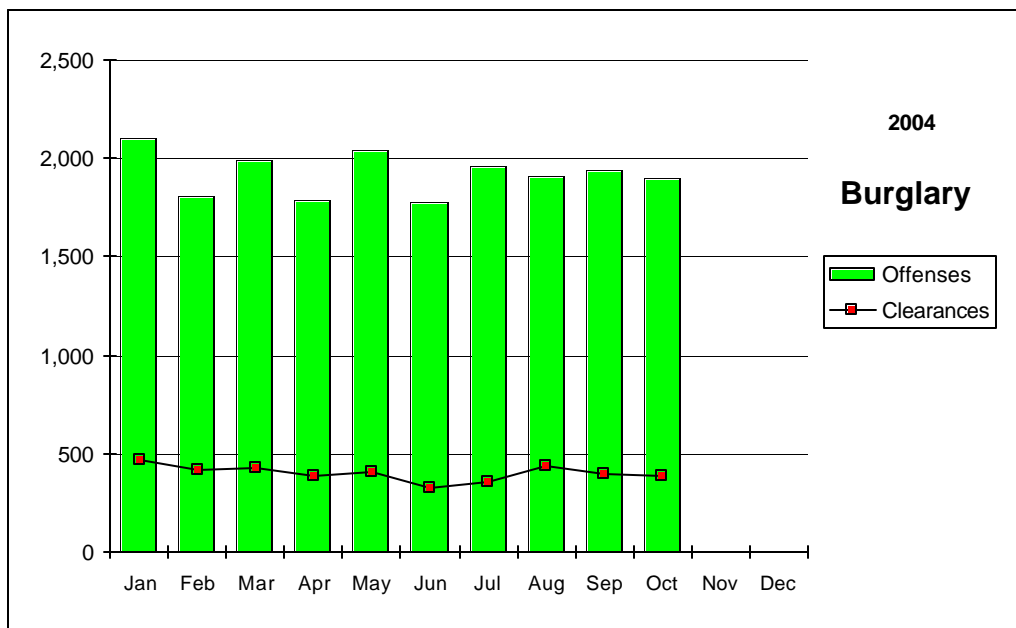
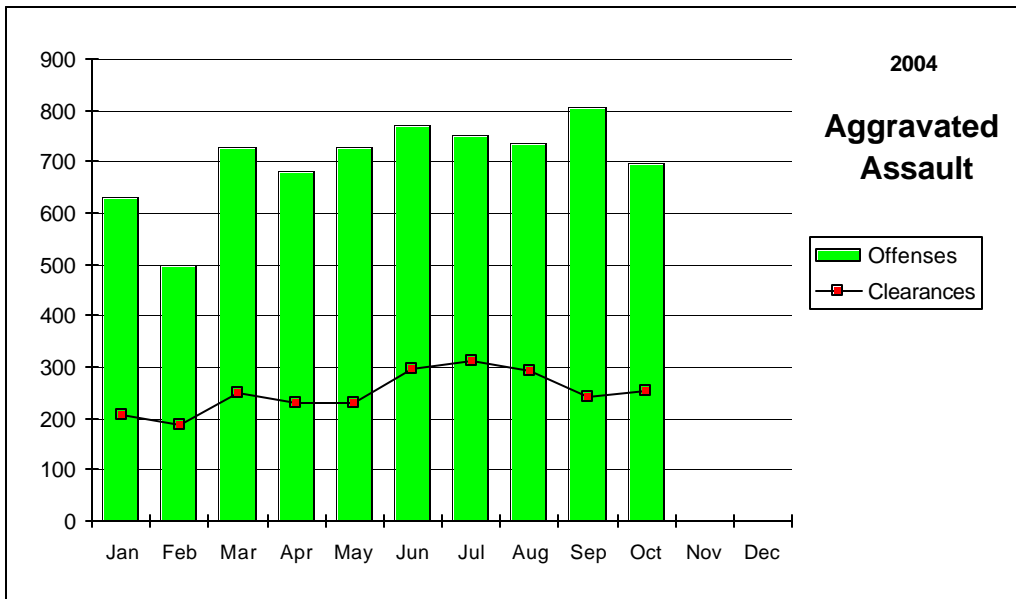
*(by Percent)*

	Murder	Rape	Robbery	Assault	Burglary	Larceny	MV Theft	Arson	Clear Rate
<b>Nevada</b>	63.33	24.46	18.62	35.52	20.80	23.33	12.21	11.63	21.34
<b>National</b>	62.40	44.30	24.90	56.10	12.70	17.60	13.60	16.00	19.60

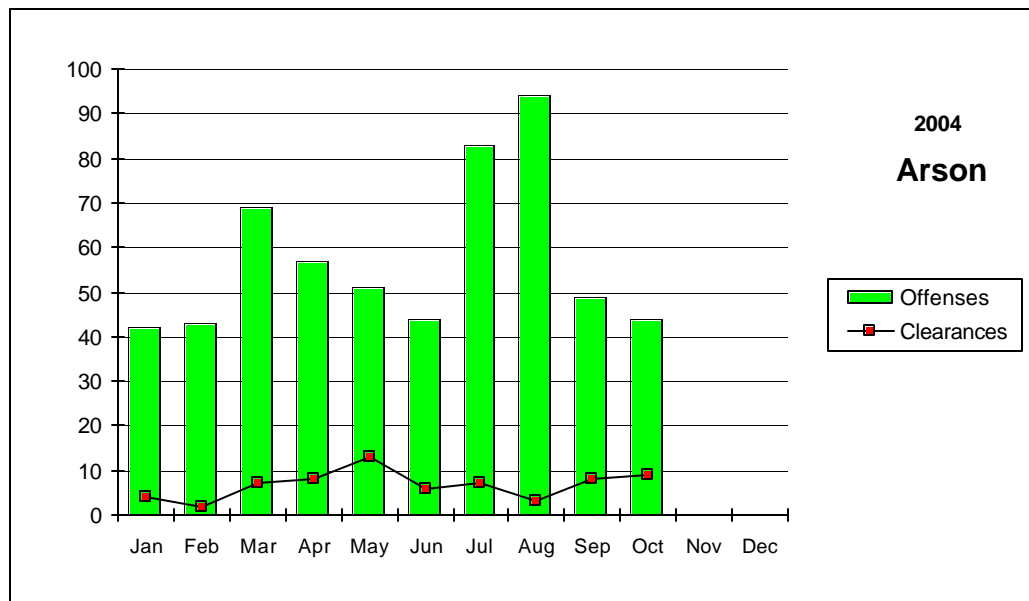
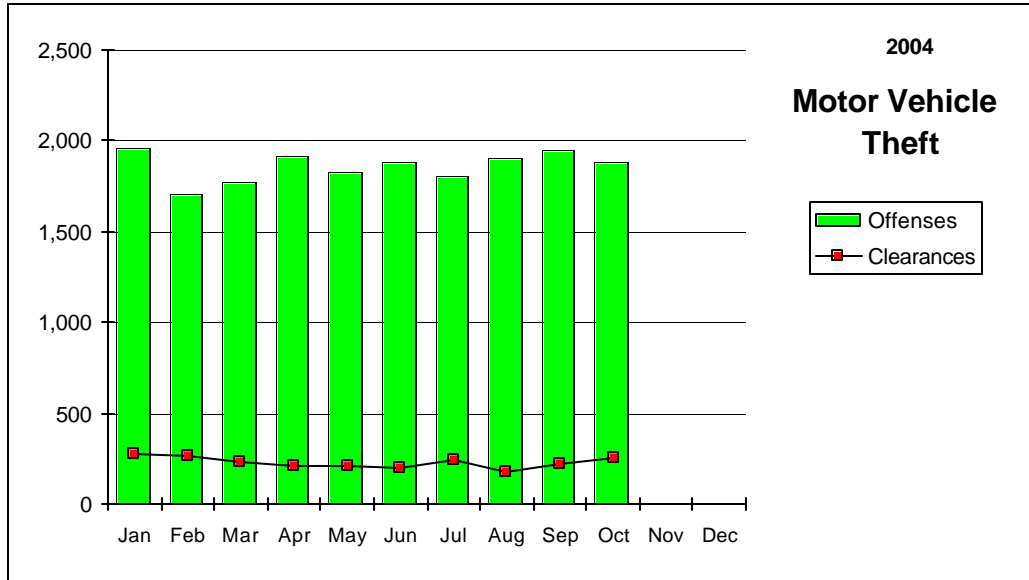
# Nevada--Graphic Summary--UCR



# Nevada--Graphic Summary--UCR



# Nevada--Graphic Summary--UCR



## Nevada--Murder--Incidence Level Variation--UCR

### October 2004

Agency	October	October	2004 YTD	2004 YTD	October	October	2003 YTD	2003 YTD
	2004 Offenses	2004 Cleared	Offenses	Cleared	2003 Offenses	2003 Cleared	Offenses	Cleared
Boulder	0	0	0	0	1	0	2	0
Carlin PD	0	0	0	0	0	0	0	0
Carson SO	0	0	1	2	0	0	0	0
Churchill SO	0	0	1	1	0	0	0	0
Clark Co Schl PD	0	0	0	0	0	0	0	0
Douglas SO	0	0	0	0	0	0	0	0
Elko PD	0	0	1	1	0	0	0	0
Elko SO	0	0	0	0	0	0	1	1
Esmeralda SO	0	0	0	0	0	0	0	0
Eureka SO	0	0	0	0	0	0	0	0
Fallon PD	0	0	0	0	0	0	0	0
Henderson PD	0	1	8	10	0	0	8	4
Humboldt SO	0	0	0	0	0	0	0	0
Lander SO	0	0	1	0	0	0	0	0
Lincoln SO	0	0	0	0	0	0	0	0
Lovelock PD	0	0	0	0	0	0	0	0
LV Fire Dept	0	0	0	0	0	0	0	0
LV Metro	13	3	108	56	14	6	119	47
Lyon SO	0	0	0	0	0	0	0	0
Mesquite PD	0	0	0	0	0	0	1	0
Mineral SO	0	0	0	0	0	0	0	0
NLVPD	1	0	15	12	0	0	16	9
Nye SO	0	0	0	0	0	0	0	0
Pershing SO	0	0	0	0	0	0	1	1
Reno PD	0	0	9	5	1	3	10	9
Sparks PD	0	0	3	6	0	0	3	5
Storey SO	0	0	0	0	0	0	0	0
TMCC PD	0	0	0	0	0	0	0	0
UNLV PD	0	0	0	0	0	0	0	0
UNR PD	0	0	0	0	0	0	0	0
Washoe SO	1	1	1	1	0	0	5	2
Washoe Co Schl PD	0	0	0	0	0	0	0	0
Wendover PD	0	0	0	0	0	0	0	0
White Pine SO	0	0	1	1	0	0	0	0
Winnemucca PD	0	0	0	0	0	0	0	0
Yerington PD	0	0	1	0	0	0	0	0
<b>TOTALS</b>	<b>15</b>	<b>5</b>	<b>150</b>	<b>95</b>	<b>16</b>	<b>9</b>	<b>166</b>	<b>78</b>

## Nevada--Rape--Incidence Level Variation--UCR

### October 2004

Agency	October 2004 Offenses	October 2004 Cleared	2004 YTD Offenses	2004 YTD Cleared	October 2003 Offenses	October 2003 Cleared	2003 YTD Offenses	2003 YTD Cleared
Boulder	0	0	1	1	0	0	0	0
Carlin PD	0	0	0	0	0	0	0	0
Carson SO	0	0	0	0	0	0	1	0
Churchill SO	0	1	21	20	0	0	13	5
Clark Co Schl PD	4	0	6	1	0	0	0	0
Douglas SO	0	0	0	0	0	0	0	0
Elko PD	0	0	5	1	-1	0	4	4
Elko SO	0	0	3	2	1	0	9	5
Esmeralda SO	0	0	0	0	0	0	1	1
Eureka SO	0	0	0	0	0	0	0	0
Fallon PD	0	0	0	0	0	0	1	0
Henderson PD	5	3	50	23	9	4	85	27
Humboldt SO	0	0	0	0	0	0	0	0
Lander SO	0	0	1	1	0	0	2	0
Lincoln SO	0	0	0	0	0	0	1	0
Lovelock PD	0	0	3	1	0	0	-1	0
LV Fire Dept	0	0	0	0	0	0	0	0
LV Metro	57	13	483	76	36	11	451	104
Lyon SO	0	0	6	3	2	0	8	2
Mesquite PD	0	0	1	1	0	0	0	0
Mineral SO	0	0	0	0	0	0	0	0
NLVPD	5	2	50	13	5	4	44	24
Nye SO	1	1	1	1	0	0	2	2
Pershing SO	2	1	5	2	0	0	3	1
Reno PD	13	1	96	28	6	3	78	14
Sparks PD	3	0	30	13	5	3	41	32
Storey SO	0	0	0	0	0	0	0	0
TMCC PD	0	0	0	0	0	0	0	0
UNLV PD	0	0	1	0	0	0	3	1
UNR PD	0	0	11	1	2	0	5	0
Washoe SO	0	0	1	-1	0	0	4	3
Washoe Co Schl PD	0	0	1	0	0	0	0	1
Wendover PD	0	0	0	0	0	0	1	0
White Pine SO	0	0	1	1	0	0	2	1
Winnemucca PD	0	0	4	3	0	0	4	4
Yerington PD	0	0	0	0	0	0	0	0
<b>TOTALS</b>	<b>90</b>	<b>22</b>	<b>781</b>	<b>191</b>	<b>65</b>	<b>25</b>	<b>762</b>	<b>231</b>

## Nevada--Robbery--Incidence Level Variation--UCR

### October 2004

Agency	October 2004 Offenses	October 2004 Cleared	YTD Offenses	2004 YTD Cleared	October 2003 Offenses	October 2003 Cleared	YTD Offenses	2003 YTD Cleared
Boulder	0	0	1	0	0	0	2	1
Carlin PD	0	0	0	0	0	0	0	0
Carson SO	0	0	21	10	0	0	16	5
Churchill SO	0	0	0	0	1	0	2	0
Clark Co Schl PD	1	1	20	10	3	0	29	13
Douglas SO	0	0	9	6	1	0	6	4
Elko PD	3	1	7	2	0	0	8	3
Elko SO	0	0	1	1	0	0	2	2
Esmeralda SO	0	0	0	0	0	0	0	0
Eureka SO	0	0	1	1	0	0	0	0
Fallon PD	0	1	4	4	1	0	7	2
Henderson PD	12	2	111	38	19	9	135	41
Humboldt SO	0	0	1	1	0	0	0	0
Lander SO	0	0	1	0	0	0	1	0
Lincoln SO	0	0	0	0	0	0	0	0
Lovelock PD	0	0	0	0	0	0	0	0
LV Fire Dept	0	0	0	0	0	0	0	0
LV Metro	353	65	3,103	473	317	51	3,256	568
Lyon SO	2	0	5	1	1	0	5	1
Mesquite PD	0	0	4	4	1	1	4	2
Mineral SO	0	0	1	1	0	0	0	0
NLVPD	60	5	314	56	24	4	271	45
Nye SO	0	0	4	5	2	1	12	5
Pershing SO	0	0	1	0	0	0	0	0
Reno PD	40	7	389	101	57	26	399	125
Sparks PD	10	5	75	39	11	5	82	28
Storey SO	0	0	1	0	0	0	0	0
TMCC PD	0	0	1	0	0	0	0	0
UNLV PD	0	0	3	1	0	0	3	1
UNR PD	0	0	0	0	0	0	0	0
Washoe SO	2	1	10	5	2	0	18	7
Washoe Co Schl PD	0	0	0	0	0	0	5	5
Wendover PD	1	0	2	1	0	0	2	0
White Pine SO	0	0	1	1	0	0	0	0
Winnemucca PD	0	0	2	1	0	0	3	1
Yerington PD	0	0	0	0	0	0	0	0
<b>TOTALS</b>	<b>484</b>	<b>88</b>	<b>4,093</b>	<b>762</b>	<b>440</b>	<b>97</b>	<b>4,268</b>	<b>859</b>

# Nevada--Aggravated Assault--Incidence Level Variation--UCR

## October 2004

Agency	October 2004 Offenses	October 2004 Cleared	2004 YTD Offenses	2004 YTD Cleared	October 2003 Offenses	October 2003 Cleared	2003 YTD Offenses	2003 YTD Cleared
Boulder	0	0	10	7	1	1	30	14
Carlin PD	0	0	6	6	2	2	9	8
Carson SO	17	8	232	138	15	8	197	104
Churchill SO	6	5	40	29	4	3	48	36
Clark Co SchI PD	12	4	27	12	11	9	38	25
Douglas SO	6	1	54	35	8	3	38	18
Elko PD	0	0	12	11	0	0	12	3
Elko SO	1	1	18	13	2	1	12	9
Esmeralda SO	0	0	5	5	1	1	5	5
Eureka SO	2	1	8	6	1	0	4	2
Fallon PD	1	0	19	13	1	1	7	4
Henderson PD	22	13	190	106	12	8	182	138
Humboldt SO	2	0	27	22	2	2	42	27
Lander SO	0	0	29	20	4	0	19	5
Lincoln SO	1	1	7	3	0	0	1	1
Lovelock PD	2	0	16	11	0	1	13	11
LV Fire Dept	0	0	0	0	0	0	0	0
LV Metro	461	147	4,511	1,064	399	77	3,899	873
Lyon SO	8	8	74	70	12	10	68	58
Mesquite PD	1	1	8	6	1	0	13	11
Mineral SO	2	2	3	3	0	0	2	2
NLVPD	41	12	498	268	50	34	656	355
Nye SO	4	1	82	67	8	8	77	77
Pershing SO	2	1	30	15	0	0	18	11
Reno PD	87	36	736	331	77	31	576	306
Sparks PD	12	10	201	122	20	16	178	150
Storey SO	0	0	3	1	0	0	1	1
TMCC PD	0	0	0	0	0	0	0	0
UNLV PD	0	0	1	0	0	0	5	3
UNR PD	0	0	11	6	1	1	3	2
Washoe SO	8	1	134	72	16	6	257	164
Washoe Co SchI PD	0	0	0	0	0	0	4	4
Wendover PD	0	0	12	9	2	2	9	9
White Pine SO	1	1	18	17	2	2	27	24
Winnemucca PD	0	0	10	10	1	1	11	10
Yerington PD	0	0	0	0	0	0	4	3
<b>TOTALS</b>	<b>699</b>	<b>254</b>	<b>7,032</b>	<b>2,498</b>	<b>653</b>	<b>228</b>	<b>6,465</b>	<b>2,473</b>

**Nevada--All Assaults--Incidence Level Variation--UCR**

**October 2004**

<b>Agency</b>	<b>October 2004 Offenses</b>	<b>October 2004 Cleared</b>	<b>2004 YTD Offenses</b>	<b>2004 YTD Cleared</b>	<b>October 2003 Offenses</b>	<b>October 2003 Cleared</b>	<b>2003 YTD Offenses</b>	<b>2003 YTD Cleared</b>
Boulder	0	0	26	13	1	2	35	18
Carlin PD	2	2	25	21	2	2	23	18
Carson SO	68	46	806	501	79	43	820	403
Churchill SO	14	17	188	163	20	16	189	151
Clark Co Schl PD	105	67	657	465	151	78	767	477
Douglas SO	54	35	523	385	57	33	480	334
Elko PD	29	9	220	115	18	8	238	104
Elko SO	2	2	32	21	4	2	20	14
Esmeralda SO	0	0	6	6	1	1	6	6
Eureka SO	2	1	14	12	1	0	9	4
Fallon PD	26	16	226	186	26	22	204	146
Henderson PD	210	126	2,050	1,153	192	107	1,957	1,304
Humboldt SO	2	0	40	31	6	6	57	38
Lander SO	0	0	41	29	7	2	57	36
Lincoln SO	6	3	36	15	2	0	16	9
Lovelock PD	4	0	44	32	1	5	46	44
LV Fire Dept	0	0	0	0	0	0	0	0
LV Metro	2,210	479	21,681	4,529	2,065	287	20,721	4,250
Lyon SO	48	48	474	459	51	48	396	372
Mesquite PD	15	17	141	134	12	11	165	137
Mineral SO	2	2	37	32	7	7	36	38
NLVPD	211	99	2,280	1,265	216	136	2,373	1,286
Nye SO	10	6	488	473	54	54	551	551
Pershing SO	5	4	55	28	1	0	37	25
Reno PD	399	205	3,783	2,035	492	252	3,760	1,930
Sparks PD	87	74	1,213	824	130	99	1,311	1,093
Storey SO	6	4	32	18	2	2	26	12
TMCC PD	0	0	3	0	0	0	1	0
UNLV PD	3	0	23	14	2	1	25	17
UNR PD	3	1	20	9	4	3	23	9
Washoe SO	73	28	688	398	74	28	728	448
Washoe Co Schl PD	0	0	0	0	0	0	20	20
Wendover PD	5	5	62	54	4	4	39	35
White Pine SO	7	7	97	96	13	13	98	85
Winnemucca PD	9	9	73	71	8	7	80	74
Yerington PD	6	3	42	35	7	6	54	48
<b>TOTALS</b>	<b>3,623</b>	<b>1,315</b>	<b>36,126</b>	<b>13,622</b>	<b>3,710</b>	<b>1,285</b>	<b>35,368</b>	<b>13,536</b>

## Nevada--Burglary--Incidence Level Variation--UCR

### October 2004

Agency	October 2004	October 2004	2004 YTD	2004 YTD	October 2003	October 2003	2003 YTD	2003 YTD
	Offenses	Cleared	Offenses	Cleared	Offenses	Cleared	Offenses	Cleared
Boulder	15	1	129	12	12	3	97	32
Carlin PD	0	0	7	1	0	0	10	5
Carson SO	34	12	325	70	20	6	345	47
Churchill SO	1	7	89	29	9	2	66	18
Clark Co SchI PD	34	7	235	33	20	5	221	40
Douglas SO	20	2	213	34	17	7	223	45
Elko PD	12	3	126	18	5	0	106	9
Elko SO	15	2	106	20	7	1	82	16
Esmeralda SO	0	0	1	0	1	0	6	2
Eureka SO	1	0	4	1	1	0	5	0
Fallon PD	4	0	61	18	5	0	51	10
Henderson PD	159	24	1,398	199	144	22	1,184	141
Humboldt SO	0	0	32	14	0	0	22	3
Lander SO	0	0	21	2	8	1	29	5
Lincoln SO	2	0	12	4	0	0	20	8
Lovelock PD	5	4	31	16	2	3	22	13
LV Fire Dept	0	0	0	0	0	0	0	0
LV Metro	1,183	260	11,712	2,777	1,094	327	10,725	2,850
Lyon SO	20	3	231	25	20	2	192	25
Mesquite PD	1	1	4	3	0	0	10	10
Mineral SO	2	0	24	1	2	0	30	3
NLVPD	124	16	1,243	129	149	12	1,395	149
Nye SO	14	3	435	169	50	23	424	189
Pershing SO	1	0	30	4	4	0	33	5
Reno PD	141	7	1,414	121	230	21	1,648	160
Sparks PD	57	19	668	175	52	14	680	179
Storey SO	1	1	20	6	0	0	6	0
TMCC PD	1	0	7	0	1	0	5	0
UNLV PD	6	1	75	3	9	0	113	5
UNR PD	5	1	33	3	2	0	20	2
Washoe SO	29	11	382	62	23	4	424	44
Washoe Co SchI PD	2	0	30	6	4	0	52	8
Wendover PD	2	1	37	10	1	0	15	3
White Pine SO	4	0	33	6	4	0	45	9
Winnemucca PD	2	1	38	15	4	2	47	19
Yerington PD	2	1	22	13	4	2	42	21
<b>TOTALS</b>	<b>1,899</b>	<b>388</b>	<b>19,228</b>	<b>3,999</b>	<b>1,904</b>	<b>457</b>	<b>18,395</b>	<b>4,075</b>

## Nevada--Larceny--Incidence Level Variation--UCR

### October 2004

Agency	October 2004 Offenses	October 2004 Cleared	2004 YTD Offenses	2004 YTD Cleared	October 2003 Offense	October 2003 Cleared	2003 YTD Offenses	2003 YTD Cleared
Boulder	9	1	80	9	12	1	127	15
Carlin PD	4	0	17	6	4	1	35	11
Carson SO	87	26	914	199	99	22	978	193
Churchill SO	10	4	138	55	17	7	130	38
Clark Co Schl PD	83	20	670	110	73	16	658	97
Douglas SO	85	18	757	160	78	15	626	167
Elko PD	27	3	301	47	28	6	318	40
Elko SO	14	0	93	16	15	3	81	12
Esmeralda SO	3	1	4	1	0	0	2	2
Eureka SO	1	0	13	3	1	0	11	2
Fallon PD	33	8	364	97	28	6	350	64
Henderson PD	299	50	2,788	490	236	46	2,366	490
Humboldt SO	5	2	25	13	1	1	36	14
Lander SO	0	0	28	6	4	0	29	3
Lincoln SO	3	1	14	3	0	0	32	6
Lovelock PD	4	4	25	17	4	2	29	19
LV Fire Dept	0	0	0	0	0	0	0	0
LV Metro	2,256	514	24,363	6,140	2,498	14	24,577	2,867
Lyon SO	39	13	414	107	59	12	375	86
Mesquite PD	27	10	222	60	19	8	195	58
Mineral SO	1	1	17	6	4	1	19	7
NLVPD	219	50	2,424	457	232	57	2,236	476
Nye SO	44	10	516	241	48	25	473	252
Pershing SO	5	3	36	16	4	1	44	16
Reno PD	563	153	5,783	1,297	994	191	6,421	1,295
Sparks PD	198	34	2,086	384	221	39	2,046	549
Storey SO	3	0	24	2	3	1	32	3
TMCC PD	1	0	7	1	0	0	9	0
UNLV PD	45	2	249	9	41	2	229	7
UNR PD	9	3	125	4	16	0	116	2
Washoe SO	58	5	645	60	75	8	630	81
Washoe Co Schl PD	40	14	221	69	22	3	211	43
Wendover PD	7	1	133	45	13	4	86	25
White Pine SO	14	2	122	35	9	1	107	22
Winnemucca PD	11	5	101	34	8	6	116	45
Yerington PD	3	2	21	7	3	2	21	10
<b>TOTALS</b>	<b>4,210</b>	<b>960</b>	<b>43,740</b>	<b>10,206</b>	<b>4,869</b>	<b>501</b>	<b>43,751</b>	<b>7,017</b>

## Nevada--MV Theft--Incidence Level Variation--UCR

### October 2004

Agency	October	October	2004 YTD	2004 YTD	October	October	2003 YTD	2003 YTD
	2004 Offenses	2004 Cleared	Offenses	Cleared	2003 Offenses	2003 Cleared	Offenses	Cleared
Boulder	5	0	24	1	2	0	24	16
Carlin PD	0	0	3	1	0	0	7	3
Carson SO	21	8	183	50	12	3	139	22
Churchill SO	4	2	17	10	6	7	41	24
Clark Co Schl PD	6	0	43	3	6	2	45	5
Douglas SO	9	6	84	55	6	3	46	33
Elko PD	4	0	41	2	1	0	25	4
Elko SO	2	1	21	8	1	2	19	12
Esmeralda SO	0	0	0	0	0	0	0	0
Eureka SO	0	0	2	1	0	0	4	2
Fallon PD	3	3	22	8	3	1	20	4
Henderson PD	133	7	1,126	45	132	4	1,155	59
Humboldt SO	2	1	8	5	1	1	5	3
Lander SO	0	0	12	4	3	1	6	2
Lincoln SO	1	1	7	4	1	1	8	1
Lovelock PD	0	1	4	3	0	0	0	0
LV Fire Dept	0	0	0	0	0	0	0	0
LV Metro	1,324	153	13,218	1,625	1,313	143	12,057	1,471
Lyon SO	4	3	66	26	7	5	64	18
Mesquite PD	9	5	36	11	0	1	30	12
Mineral SO	0	0	5	3	0	0	0	0
NLVPD	147	6	1,604	89	160	10	1,468	91
Nye SO	29	21	69	47	7	4	53	29
Pershing SO	0	0	2	1	1	1	2	1
Reno PD	122	19	1,362	147	158	16	1,248	120
Sparks PD	32	11	377	74	36	4	345	81
Storey SO	0	0	3	0	0	0	2	0
TMCC PD	0	0	0	0	0	0	0	0
UNLV PD	5	0	56	2	8	1	69	6
UNR PD	1	1	11	2	2	0	7	0
Washoe SO	10	1	150	24	14	5	152	27
Washoe Co Schl PD	0	0	3	1	0	0	6	3
Wendover PD	3	2	10	8	0	0	10	8
White Pine SO	0	0	8	5	1	0	19	5
Winnemucca PD	3	1	12	5	0	0	13	4
Yerington PD	0	0	0	0	0	0	0	0
<b>TOTALS</b>	<b>1,879</b>	<b>253</b>	<b>18,589</b>	<b>2,270</b>	<b>1,881</b>	<b>215</b>	<b>17,089</b>	<b>2,066</b>

## Nevada--Arson--Incidence Level Variation--UCR

### October 2004

Agency	October 2004 Offenses	October 2004 Cleared	2004 YTD Offenses	2004 YTD Cleared	October 2003 Offenses	October 2003 Cleared	2003 YTD Offenses	2003 YTD Cleared
Boulder	0	0	3	0	1	0	3	1
Carlin PD	0	0	0	0	0	0	0	0
Carson SO	0	0	12	3	0	0	14	1
Churchill SO	0	0	3	2	0	0	1	1
Clark Co Schl PD	3	2	39	10	6	1	61	17
Douglas SO	2	0	8	6	0	0	3	2
Elko PD	0	0	7	2	1	0	2	1
Elko SO	0	0	5	2	0	0	2	1
Esmeralda SO	0	0	0	0	0	0	0	0
Eureka SO	0	0	0	0	0	0	0	0
Fallon PD	0	0	2	1	0	0	0	0
Henderson PD	13	4	71	14	1	0	39	4
Humboldt SO	1	1	3	3	0	0	0	0
Lander SO	0	0	0	0	0	0	0	0
Lincoln SO	0	0	3	0	0	0	0	0
Lovelock PD	0	0	0	0	0	0	0	0
LV Fire Dept	5	0	57	6	3	0	70	7
LV Metro	9	0	239	0	23	0	169	3
Lyon SO	0	0	5	1	0	0	8	4
Mesquite PD	0	0	0	0	0	0	0	0
Mineral SO	0	0	3	1	0	0	0	0
NLVPD	1	0	40	2	6	0	45	6
Nye SO	0	0	3	0	1	0	10	0
Pershing SO	0	0	0	0	0	0	0	0
Reno PD	6	2	45	4	6	1	41	6
Sparks PD	0	0	6	6	0	0	0	0
Storey SO	0	0	1	0	0	0	2	2
TMCC PD	0	0	0	0	0	0	0	0
UNLV PD	0	0	1	1	0	0	1	1
UNR PD	0	0	0	0	0	0	1	0
Washoe SO	0	0	3	1	0	0	5	1
Washoe CO Scl PD	4	0	14	0	5	0	19	3
Wendover PD	0	0	1	0	1	1	1	1
White Pine SO	0	0	1	1	0	0	1	0
Winnemucca PD	0	0	1	1	1	1	3	1
Yerington PD	0	0	0	0	0	0	0	0
<b>TOTALS</b>	<b>44</b>	<b>9</b>	<b>576</b>	<b>67</b>	<b>55</b>	<b>4</b>	<b>501</b>	<b>63</b>



# Stolen/Recovered Property Report

October 2004

Property Type	Boulder PD	Carlin PD	Carson SO	Churchill SO	Clark Co SchI PD	Douglas SO	Elko PD	Elko SO	Esmeralda SO
<b>Currency</b>									
Stolen	\$1,392	\$800	\$2,771	\$1,383	\$2,605	\$4,990	\$3,510	\$25,039	\$0
Recovered	\$0	\$0	\$0	\$0	\$0	\$620	\$58	\$24,819	\$0
% Recovered	0.0%	0.0%	0.0%	0.0%	0.0%	12.4%	1.7%	99.1%	0.0%
<b>Jewelry</b>									
Stolen	\$7,500	\$0	\$18,025	\$0	\$0	\$36,902	\$2,480	\$2,065	\$0
Recovered	\$4,000	\$0	\$0	\$0	\$0	\$23,850	\$1,120	\$1,640	\$0
% Recovered	53.3%	0.0%	0.0%	0.0%	0.0%	64.6%	45.2%	79.4%	0.0%
<b>Clothing</b>									
Stolen	\$560	\$0	\$500	\$0	\$310	\$0	\$311	\$90	\$0
Recovered	\$0	\$0	\$0	\$0	\$0	\$0	\$81	\$90	\$0
% Recovered	0.0%	0.0%	0.0%	0.0%	0.0%	0.0%	26.0%	100.0%	0.0%
<b>Motor Vehicle</b>									
Stolen	\$21,500	\$0	\$170,851	\$3,450	\$0	\$116,075	\$48,300	\$27,000	\$0
Recovered	\$17,400	\$0	\$128,652	\$100	\$0	\$92,775	\$28,300	\$40,000	\$0
% Recovered	80.9%	0.0%	75.3%	2.9%	0.0%	79.9%	58.6%	148.1%	0.0%
<b>Office Equipment</b>									
Stolen	\$0	\$0	\$3,061	\$0	\$10,935	\$0	\$490	\$0	\$0
Recovered	\$0	\$0	\$0	\$0	\$0	\$0	\$90	\$0	\$0
% Recovered	0.0%	0.0%	0.0%	0.0%	0.0%	0.0%	18.4%	0.0%	0.0%
<b>TV, VCR, Camera, Etc.</b>									
Stolen	\$1,450	\$0	\$2,455	\$0	\$4,186	\$3,159	\$4,938	\$650	\$0
Recovered	\$0	\$0	\$95	\$0	\$0	\$440	\$0	\$200	\$0
% Recovered	0.0%	0.0%	3.9%	0.0%	0.0%	13.9%	0.0%	30.8%	0.0%
<b>Firearm</b>									
Stolen	\$0	\$650	\$900	\$0	\$179	\$4,000	\$5,250	\$2,115	\$0
Recovered	\$0	\$0	\$0	\$0	\$0	\$0	\$0	\$1,190	\$0
% Recovered	0.0%	0.0%	0.0%	0.0%	0.0%	0.0%	0.0%	56.3%	0.0%
<b>Household Goods</b>									
Stolen	\$250	\$0	\$0	\$0	\$0	\$0	\$3,045	\$300	\$0
Recovered	\$0	\$0	\$0	\$750	\$0	\$0	\$0	\$300	\$0
% Recovered	0.0%	0.0%	0.0%	0.0%	0.0%	0.0%	0.0%	100.0%	0.0%
<b>Consumable Goods</b>									
Stolen	\$15	\$0	\$191	\$553	\$6	\$632	\$202	\$0	\$150
Recovered	\$0	\$0	\$170	\$30	\$0	\$37	\$16	\$0	\$0
% Recovered	0.0%	0.0%	89.0%	5.4%	0.0%	5.9%	7.9%	0.0%	0.0%
<b>Livestock</b>									
Stolen	\$0	\$0	\$0	\$0	\$0	\$0	\$0	\$0	\$0
Recovered	\$0	\$0	\$0	\$0	\$0	\$0	\$0	\$0	\$0
% Recovered	0.0%	0.0%	0.0%	0.0%	0.0%	0.0%	0.0%	0.0%	0.0%
<b>Misc.</b>									
Stolen	\$13,467	\$100	\$38,704	\$3,369	\$32,559	\$47,750	\$1,117	\$10,685	\$800
Recovered	\$4,000	\$0	\$1,640	\$80	\$1,900	\$2,538	\$5,140	\$1,010	\$0
% Recovered	29.7%	0.0%	4.2%	2.4%	5.8%	5.3%	460.2%	9.5%	0.0%
<b>TOTALS</b>									
Stolen	\$46,134	\$1,550	\$237,458	\$8,755	\$50,780	\$213,508	\$69,643	\$67,944	\$950
Recovered	\$25,400	\$0	\$130,557	\$960	\$1,900	\$120,260	\$34,805	\$69,249	\$0
% Recovered	55.1%	0.0%	55.0%	11.0%	3.7%	56.3%	50.0%	101.9%	0.0%

# Stolen/Recovered Property Report

## October 2004

Property Type	Eureka SO	Fallon PD	Henderson PD	Humboldt SO	Lander SO	Las Vegas Metro	Lincoln SO	Lovelock PD	Lyon SO
<b>Currency</b>									
Stolen	\$93	\$18	\$55,357	\$0	\$0	\$950,520	\$0	\$0	\$3,630
Recovered	\$0	\$0	\$1,982	\$0	\$0	\$121,090	\$0	\$0	\$280
% Recovered	0.0%	0.0%	3.6%	0.0%	0.0%	12.7%	0.0%	0.0%	7.7%
<b>Jewelry</b>									
Stolen	\$0	\$0	\$517,709	\$0	\$0	\$1,414,038	\$0	\$0	\$2,000
Recovered	\$0	\$0	\$2,579	\$0	\$0	\$11,071	\$0	\$0	\$0
% Recovered	0.0%	0.0%	0.5%	0.0%	0.0%	0.8%	0.0%	0.0%	0.0%
<b>Clothing</b>									
Stolen	\$0	\$12	\$23,253	\$235	\$0	\$1,162,989	\$600	\$0	\$60
Recovered	\$0	\$12	\$803	\$0	\$0	\$22,581	\$0	\$0	\$60
% Recovered	0.0%	100.0%	3.5%	0.0%	0.0%	1.9%	0.0%	0.0%	100.0%
<b>Motor Vehicle</b>									
Stolen	\$0	\$7,065	\$1,078,715	\$29,500	\$0	\$3,517,085	\$5,000	\$1,000	\$46,900
Recovered	\$0	\$3,475	\$876,215	\$21,000	\$0	\$1,344,487	\$5,000	\$0	\$44,000
% Recovered	0.0%	49.2%	81.2%	71.2%	0.0%	38.2%	100.0%	0.0%	93.8%
<b>Office Equipment</b>									
Stolen	\$0	\$0	\$121,357	\$0	\$0	\$402,642	\$0	\$0	\$2,873
Recovered	\$0	\$0	\$0	\$0	\$0	\$1,758	\$0	\$0	\$0
% Recovered	0.0%	0.0%	0.0%	0.0%	0.0%	0.4%	0.0%	0.0%	0.0%
<b>TV, VCR, Camera, Etc.</b>									
Stolen	\$0	\$709	\$183,739	\$850	\$0	\$657,171	\$100	\$100	\$4,795
Recovered	\$0	\$0	\$638	\$0	\$0	\$9,283	\$100	\$0	\$0
% Recovered	0.0%	0.0%	0.3%	0.0%	0.0%	1.4%	100.0%	0.0%	0.0%
<b>Firearm</b>									
Stolen	\$0	\$0	\$7,230	\$300	\$0	\$34,904	\$1,800	\$0	\$5,585
Recovered	\$0	\$0	\$1,000	\$300	\$0	\$504	\$1,800	\$0	\$0
% Recovered	0.0%	0.0%	13.8%	100.0%	0.0%	1.4%	100.0%	0.0%	0.0%
<b>Household Goods</b>									
Stolen	\$0	\$162	\$56,396	\$0	\$0	\$169,658	\$0	\$0	\$921
Recovered	\$0	\$0	\$9,523	\$0	\$0	\$1,308	\$0	\$0	\$0
% Recovered	0.0%	0.0%	16.9%	0.0%	0.0%	0.8%	0.0%	0.0%	0.0%
<b>Consumable Goods</b>									
Stolen	\$0	\$251	\$10,807	\$0	\$0	\$108,337	\$0	\$22	\$502
Recovered	\$0	\$225	\$778	\$0	\$0	\$2,508	\$0	\$22	\$19
% Recovered	0.0%	89.6%	7.2%	0.0%	0.0%	2.3%	0.0%	100.0%	3.8%
<b>Livestock</b>									
Stolen	\$0	\$0	\$800	\$0	\$0	\$0	\$0	\$0	\$0
Recovered	\$0	\$0	\$0	\$0	\$0	\$0	\$0	\$0	\$0
% Recovered	0.0%	0.0%	0.0%	0.0%	0.0%	0.0%	0.0%	0.0%	0.0%
<b>Misc.</b>									
Stolen	\$300	\$3,080	\$309,672	\$2,200	\$0	\$2,057,672	\$9,382	\$255	\$15,709
Recovered	\$0	\$375	\$7,563	\$1,150	\$0	\$95,581	\$17	\$0	\$3,818
% Recovered	0.0%	12.2%	2.4%	52.3%	0.0%	4.6%	0.2%	0.0%	24.3%
<b>TOTALS</b>									
Stolen	\$393	\$11,297	\$2,365,035	\$33,085	\$0	\$10,475,016	\$16,882	\$1,377	\$82,974
Recovered	\$0	\$4,087	\$901,081	\$22,450	\$0	\$1,610,171	\$6,917	\$22	\$48,176
% Recovered	0.0%	36.2%	38.1%	67.9%	0.0%	15.4%	41.0%	1.6%	58.1%

# Stolen/Recovered Property Report

October 2004

Property Type	Mesquite PD	Mineral SO	NLVPD	Nye SO	Pershing SO	Reno PD	Sparks PD	Storey SO	TMCC PD	UNLV PD
<b>Currency</b>										
Stolen	\$220	\$0	\$36,677	\$2,446	\$0	\$29,998	\$22,976	\$0	\$0	\$1,187
Recovered	\$0	\$0	\$172	\$0	\$0	\$65	\$4	\$0	\$0	\$0
% Recovered	0.0%	0.0%	0.5%	0.0%	0.0%	0.2%	0.0%	0.0%	0.0%	0.0%
<b>Jewelry</b>										
Stolen	\$1,810	\$0	\$89,850	\$2,093	\$0	\$120,503	\$22,450	\$0	\$0	\$0
Recovered	\$250	\$0	\$4,345	\$1,893	\$0	\$1,350	\$281	\$0	\$0	\$0
% Recovered	13.8%	0.0%	4.8%	90.4%	0.0%	1.1%	1.3%	0.0%	0.0%	0.0%
<b>Clothing</b>										
Stolen	\$194	\$0	\$5,980	\$270	\$0	\$13,843	\$3,001	\$0	\$0	\$400
Recovered	\$0	\$0	\$625	\$0	\$0	\$8,277	\$321	\$0	\$0	\$0
% Recovered	0.0%	0.0%	10.5%	0.0%	0.0%	59.8%	10.7%	0.0%	0.0%	0.0%
<b>Motor Vehicle</b>										
Stolen	\$133,000	\$0	\$1,485,830	\$4,295	\$0	\$609,478	\$300,150	\$0	\$0	\$7,000
Recovered	\$13,000	\$0	\$1,007,191	\$1,795	\$0	\$549,567	\$463,500	\$0	\$0	\$2,000
% Recovered	9.8%	0.0%	67.8%	41.8%	0.0%	90.2%	154.4%	0.0%	0.0%	28.6%
<b>Office Equipment</b>										
Stolen	\$3,500	\$50	\$5,650	\$320	\$0	\$48,199	\$11,804	\$0	\$1,487	\$0
Recovered	\$0	\$0	\$0	\$0	\$0	\$0	\$75	\$0	\$0	\$0
% Recovered	0.0%	0.0%	0.0%	0.0%	0.0%	0.0%	0.6%	0.0%	0.0%	0.0%
<b>TV, VCR, Camera, Etc.</b>										
Stolen	\$320	\$0	\$91,737	\$790	\$0	\$80,424	\$60,865	\$119	\$0	\$19,523
Recovered	\$0	\$0	\$2,485	\$0	\$0	\$777	\$1,620	\$0	\$0	\$0
% Recovered	0.0%	0.0%	2.7%	0.0%	0.0%	1.0%	2.7%	0.0%	0.0%	0.0%
<b>Firearm</b>										
Stolen	\$1,199	\$0	\$5,304	\$0	\$0	\$8,020	\$2,768	\$0	\$0	\$0
Recovered	\$150	\$0	\$0	\$0	\$0	\$200	\$0	\$0	\$0	\$0
% Recovered	12.5%	0.0%	0.0%	0.0%	0.0%	2.5%	0.0%	0.0%	0.0%	0.0%
<b>Household Goods</b>										
Stolen	\$1,139	\$0	\$32,184	\$6,050	\$4,000	\$1,563	\$58,572	\$150	\$0	\$0
Recovered	\$0	\$0	\$34	\$1,000	\$4,000	\$30	\$4,440	\$0	\$0	\$0
% Recovered	0.0%	0.0%	0.1%	16.5%	100.0%	1.9%	7.6%	0.0%	0.0%	0.0%
<b>Consumable Goods</b>										
Stolen	\$10,828	\$0	\$1,299	\$158	\$0	\$11,138	\$2,007	\$1	\$0	\$0
Recovered	\$27	\$0	\$315	\$0	\$0	\$886	\$105	\$1	\$0	\$0
% Recovered	0.2%	0.0%	24.2%	0.0%	0.0%	8.0%	5.2%	100.0%	0.0%	0.0%
<b>Livestock</b>										
Stolen	\$0	\$0	\$420	\$1,500	\$0	\$0	\$0	\$0	\$0	\$0
Recovered	\$0	\$0	\$0	\$0	\$0	\$0	\$0	\$0	\$0	\$0
% Recovered	0.0%	0.0%	0.0%	0.0%	0.0%	0.0%	0.0%	0.0%	0.0%	0.0%
<b>Misc.</b>										
Stolen	\$10,016	\$25	\$190,605	\$48,389	\$3,809	\$671,102	\$103,747	\$0	\$323	\$16,894
Recovered	\$77	\$25	\$6,120	\$363	\$0	\$7,292	\$25,798	\$0	\$0	\$0
% Recovered	0.8%	100.0%	3.2%	0.8%	0.0%	1.1%	24.9%	0.0%	0.0%	0.0%
<b>TOTALS</b>										
Stolen	\$162,226	\$75	\$1,945,536	\$66,311	\$7,809	\$1,594,268	\$588,340	\$270	\$1,810	\$45,004
Recovered	\$13,504	\$25	\$1,021,287	\$5,051	\$4,000	\$568,444	\$496,144	\$1	\$0	\$2,000
% Recovered	8.3%	33.3%	52.5%	7.6%	51.2%	35.7%	84.3%	0.2%	0.0%	4.4%

# Stolen/Recovered Property Report

## October 2004

Property Type	UNR PD	Washoe SO	Washoe Co Schl PD	Wendover PD	White Pine SO	Winnemucca PD	Yerington PD	Total By Property
<b>Currency</b>								
Stolen	\$0	\$11,389	\$1,113	\$3,000	\$840	\$1,060	\$200	\$1,163,214
Recovered	\$0	\$21	\$233	\$0	\$0	\$60	\$0	\$149,404
% Recovered	0.0%	0.2%	20.9%	0.0%	0.0%	5.7%	0.0%	12.8%
<b>Jewelry</b>								
Stolen	\$0	\$38,065	\$0	\$474	\$0	\$500	\$0	\$2,276,464
Recovered	\$0	\$15,250	\$0	\$0	\$0	\$0	\$0	\$67,629
% Recovered	0.0%	40.1%	0.0%	0.0%	0.0%	0.0%	0.0%	3.0%
<b>Clothing</b>								
Stolen	\$0	\$1,290	\$0	\$0	\$0	\$404	\$0	\$1,214,302
Recovered	\$0	\$0	\$0	\$0	\$0	\$404	\$0	\$33,254
% Recovered	0.0%	0.0%	0.0%	0.0%	0.0%	100.0%	0.0%	2.7%
<b>Motor Vehicle</b>								
Stolen	\$2,500	\$5,209	\$0	\$2,500	\$0	\$19,500	\$0	\$7,641,903
Recovered	\$2,500	\$18,650	\$0	\$2,000	\$0	\$19,500	\$0	\$4,681,107
% Recovered	100.0%	358.0%	0.0%	80.0%	0.0%	100.0%	0.0%	61.3%
<b>Office Equipment</b>								
Stolen	\$0	\$7,666	\$2,275	\$0	\$0	\$0	\$0	\$622,309
Recovered	\$0	\$1,500	\$150	\$0	\$0	\$0	\$0	\$3,573
% Recovered	0.0%	19.6%	6.6%	0.0%	0.0%	0.0%	0.0%	0.6%
<b>TV, VCR, Camera, Etc.</b>								
Stolen	\$1,800	\$8,706	\$329	\$0	\$295	\$130	\$0	\$1,129,340
Recovered	\$0	\$370	\$0	\$0	\$0	\$130	\$0	\$16,138
% Recovered	0.0%	4.2%	0.0%	0.0%	0.0%	100.0%	0.0%	1.4%
<b>Firearm</b>								
Stolen	\$0	\$2,430	\$0	\$0	\$1,000	\$1,650	\$0	\$85,284
Recovered	\$0	\$0	\$0	\$0	\$0	\$0	\$0	\$5,144
% Recovered	0.0%	0.0%	0.0%	0.0%	0.0%	0.0%	0.0%	6.0%
<b>Household Goods</b>								
Stolen	\$0	\$3,690	\$0	\$0	\$0	\$0	\$0	\$338,080
Recovered	\$0	\$10	\$0	\$0	\$0	\$0	\$0	\$21,395
% Recovered	0.0%	0.3%	0.0%	0.0%	0.0%	0.0%	0.0%	6.3%
<b>Consumable Goods</b>								
Stolen	\$11	\$361	\$40	\$20	\$314	\$0	\$0	\$147,843
Recovered	\$0	\$74	\$40	\$0	\$0	\$0	\$0	\$5,252
% Recovered	0.0%	20.5%	100.0%	0.0%	0.0%	0.0%	0.0%	3.6%
<b>Livestock</b>								
Stolen	\$0	\$250	\$0	\$0	\$0	\$0	\$0	\$2,970
Recovered	\$0	\$0	\$0	\$0	\$0	\$0	\$0	\$0
% Recovered	0.0%	0.0%	0.0%	0.0%	0.0%	0.0%	0.0%	0.0%
<b>Misc.</b>								
Stolen	\$4,635	\$83,920	\$11,291	\$675	\$3,004	\$1,011	\$1,150	\$3,697,416
Recovered	\$0	\$37,134	\$1,215	\$0	\$24	\$305	\$2,554	\$205,718
% Recovered	0.0%	44.2%	10.8%	0.0%	0.8%	30.2%	222.1%	5.6%
<b>TOTALS</b>								
Stolen	\$8,946	\$162,976	\$15,048	\$6,669	\$5,452	\$24,255	\$1,350	\$18,319,125
Recovered	\$2,500	\$73,009	\$1,638	\$2,000	\$24	\$20,399	\$2,554	\$5,188,614
% Recovered	27.9%	44.8%	10.9%	30.0%	0.4%	84.1%	189.2%	28.3%

## Nevada--Assaults on Officers by Agency--UCR

### October 2004

Agency	October 2004 Offenses	October 2004 Cleared	2004 YTD Offenses	2004 YTD Cleared	October 2003 Offenses	October 2003 Cleared	2003 YTD Offenses	2003 YTD Cleared
Boulder	0	0	3	3	0	0	0	0
Carlin PD	0	0	1	1	0	0	0	0
Carson SO	3	0	8	3	1	1	10	10
Churchill SO	0	0	0	0	1	1	8	8
ClrkSchIDst PD	0	0	0	0	0	0	0	0
Douglas SO	0	0	4	3	0	0	7	7
Elko PD	1	1	10	10	0	0	7	6
Elko SO	0	0	1	1	0	0	0	0
Esmeralda SO	0	0	0	0	0	0	0	0
Eureka SO	4	4	4	4	0	0	0	0
Fallon PD	0	0	1	1	0	0	0	0
Henderson PD	0	0	3	2	1	1	11	11
Highway Patrol	3	3	16	15	4	4	24	22
Humboldt SO	0	0	0	0	0	0	3	3
Lander SO	0	0	0	0	0	0	0	0
Lincoln SO	0	0	0	0	0	0	0	0
Lovelock PD	0	0	0	0	0	0	0	0
LV Fire Dept	0	0	0	0	0	0	0	0
LV Metro	21	21	236	231	28	27	270	269
Lyon SO	1	1	8	8	1	1	5	5
Mesquite PD	0	0	0	0	0	0	0	0
Mineral SO	0	0	0	0	0	0	0	0
NV Div Investigations	0	0	0	0	0	0	0	0
NLVPD	4	4	50	47	5	4	58	54
Nye SO	0	0	4	4	1	1	9	9
Pershing SO	0	0	2	2	0	0	0	0
Reno PD	2	2	23	22	0	0	13	12
Sparks PD	0	0	7	7	0	0	10	10
Storey SO	0	0	0	0	0	0	0	0
TMCC PD	0	0	0	0	0	0	0	0
UNLV PD	0	0	4	4	0	0	7	7
UNR PD	0	0	0	0	0	0	0	0
Washoe SO	0	0	0	0	0	0	2	2
Washoe Co Schl PD	0	0	0	0	0	0	0	0
Wendover PD	0	0	3	3	0	0	3	3
White Pine SO	0	0	2	2	0	0	0	0
Winnemucca PD	0	0	3	3	0	0	1	1
Yerington PD	0	0	0	0	0	0	0	0
<b>TOTALS</b>	<b>39</b>	<b>36</b>	<b>393</b>	<b>376</b>	<b>42</b>	<b>40</b>	<b>448</b>	<b>439</b>

**Nevada -- Assaults by Agency/Weapon/Assignment -- UCR**

**October 2004**

Table 16

Agency	Total Assaults	Number Cleared	Firearm	Knife / Cutting Device	Other Danger. Weapon	Hands, Fists, Feet, Etc.	2-Officer Vehicle	1-Officer Vehicle- Alone	1-Officer Vehicle- Assisted	Det./Spec. Assign. - Alone	Det./Spec. Assign. - Assisted	Other- Alone	Other- Assisted
Boulder City PD	0	0	0	0	0	0	0	0	0	0	0	0	0
Carlin PD	0	0	0	0	0	0	0	0	0	0	0	0	0
Carson City SO	3	0	0	0	1	2	0	2	1	0	0	0	0
Churchill Co SO	0	0	0	0	0	0	0	0	0	0	0	0	0
Clark School Dist PD	0	0	0	0	0	0	0	0	0	0	0	0	0
Douglas Co SO	0	0	0	0	0	0	0	0	0	0	0	0	0
Elko PD	1	1	0	0	0	1	0	0	1	0	0	0	0
Elko Co SO	0	0	0	0	0	0	0	0	0	0	0	0	0
Esmeralda Co SO	0	0	0	0	0	0	0	0	0	0	0	0	0
Eureka Co SO	4	4	0	0	4	0	4	0	0	0	0	0	0
Fallon PD	0	0	0	0	0	0	0	0	0	0	0	0	0
Henderson PD	0	0	0	0	0	0	0	0	0	0	0	0	0
NV Highway Patrol	3	3	0	0	1	2	0	3	0	0	0	0	0
Humboldt Co SO	0	0	0	0	0	0	0	0	0	0	0	0	0
Lander Co SO	0	0	0	0	0	0	0	0	0	0	0	0	0
Lincoln Co SO	0	0	0	0	0	0	0	0	0	0	0	0	0
Lovelock PD	0	0	0	0	0	0	0	0	0	0	0	0	0
Las Vegas Fire Dept	0	0	0	0	0	0	0	0	0	0	0	0	0
Las Vegas Metro PD	21	21	0	2	3	16	9	3	9	0	0	0	0
Lyon Co SO	1	1	0	0	0	1	0	0	1	0	0	0	0
Mesquite PD	0	0	0	0	0	0	0	0	0	0	0	0	0
Mineral Co SO	0	0	0	0	0	0	0	0	0	0	0	0	0
NV Div of Investigations	0	0	0	0	0	0	0	0	0	0	0	0	0
North Las Vegas PD	4	4	1	0	0	3	1	0	2	0	0	1	0
Nye Co SO	0	0	0	0	0	0	0	0	0	0	0	0	0
Pershing Co SO	0	0	0	0	0	0	0	0	0	0	0	0	0
Reno PD	2	2	0	0	0	2	1	1	0	0	0	0	0
Sparks PD	0	0	0	0	0	0	0	0	0	0	0	0	0
Storey Co SO	0	0	0	0	0	0	0	0	0	0	0	0	0
TMCC PD	0	0	0	0	0	0	0	0	0	0	0	0	0
UNLV PD	0	0	0	0	0	0	0	0	0	0	0	0	0
UNR PD	0	0	0	0	0	0	0	0	0	0	0	0	0
Washoe Co SO	0	0	0	0	0	0	0	0	0	0	0	0	0
Washoe Co School PD	0	0	0	0	0	0	0	0	0	0	0	0	0
West Wendover PD	0	0	0	0	0	0	0	0	0	0	0	0	0
White Pine Co SO	0	0	0	0	0	0	0	0	0	0	0	0	0
Winnemucca PD	0	0	0	0	0	0	0	0	0	0	0	0	0
Yerington PD	0	0	0	0	0	0	0	0	0	0	0	0	0
<b>TOTALS</b>	<b>39</b>	<b>36</b>	<b>1</b>	<b>2</b>	<b>9</b>	<b>27</b>	<b>15</b>	<b>9</b>	<b>14</b>	<b>0</b>	<b>0</b>	<b>1</b>	<b>0</b>

28

## Nevada -- Officer Assaults by Activity/Weapon/Assignment -- UCR

### October 2004

Table 17

ACTIVITY TYPE	Total Assaults	Number Cleared	Firearm	Knife / Cutting Device	Other Danger. Weapon	Hands, Fists, Feet, Etc.	2-Officer Vehicle	1-Officer Vehicle- Alone	1-Officer Vehicle- Assisted	Det./Spec. Assign.- Alone	Det./Spec. Assign.- Assisted	Other- Alone	Other- Assisted
DOMESTIC / OTHER DISTURBANCE	20	19	1	2	2	15	10	1	9	0	0	0	0
BURGLARY IN PROGRESS	0	0	0	0	0	0	0	0	0	0	0	0	0
ROBBERY IN PROGRESS	0	0	0	0	0	0	0	0	0	0	0	0	0
ATTEMPTING OTHER ARREST	0	0	0	0	0	0	0	0	0	0	0	0	0
CIVIL DISORDER	0	0	0	0	0	0	0	0	0	0	0	0	0
HANDLING PRISONER	6	6	0	0	0	6	1	1	3	0	0	1	0
INVEST. SUSP. PERSONS / CIRCUM.	2	1	0	0	0	2	0	0	2	0	0	0	0
AMBUSH-NO WARNING	0	0	0	0	0	0	0	0	0	0	0	0	0
MENTALLY DERANGED	0	0	0	0	0	0	0	0	0	0	0	0	0
TRAFFIC PURSUITS / STOPS	8	8	0	0	6	2	4	4	0	0	0	0	0
ALL OTHER	3	2	0	0	1	2	0	3	0	0	0	0	0
<b>TOTALS</b>	<b>39</b>	<b>36</b>	<b>1</b>	<b>2</b>	<b>9</b>	<b>27</b>	<b>15</b>	<b>9</b>	<b>14</b>	<b>0</b>	<b>0</b>	<b>1</b>	<b>0</b>

29

## Nevada--Assaults with Injury/without Injury--UCR

**October 2004**

Agency	Total		Firearm		Cutting Instruments		Other Dangerous weapons		Hands, Fists, Feet, Etc.		
	Assaults by weapon	With personal injury	Without personal injury	With personal injury	Without personal injury	With personal injury	Without personal injury	With personal injury	Without personal injury	With personal injury	
Boulder City PD	0	0	0	0	0	0	0	0	0	0	
Carlin PD	0	0	0	0	0	0	0	0	0	0	
Carson City SO	3	0	3	0	0	0	0	1	0	2	
Churchill Co SO	0	0	0	0	0	0	0	0	0	0	
Clark Co Schl Dist PD	0	0	0	0	0	0	0	0	0	0	
Douglas Co SO	0	0	0	0	0	0	0	0	0	0	
Elko Co SO	0	0	0	0	0	0	0	0	0	0	
Elko PD	1	0	1	0	0	0	0	0	0	1	
Esmeralda Co SO	0	0	0	0	0	0	0	0	0	0	
Eureka Co SO	4	0	4	0	0	0	0	4	0	0	
Fallon PD	0	0	0	0	0	0	0	0	0	0	
Henderson PD	0	0	0	0	0	0	0	0	0	0	
NV Highway Patrol	0	0	0	0	0	0	0	0	0	0	
Humboldt Co SO	0	0	0	0	0	0	0	0	0	0	
Lander Co SO	0	0	0	0	0	0	0	0	0	0	
Las Vegas Metro PD	21	1	20	0	0	2	0	3	1	15	
Lincoln Co SO	0	0	0	0	0	0	0	0	0	0	
Lovelock PD	0	0	0	0	0	0	0	0	0	0	
Lyon Co SO	1	0	1	0	0	0	0	0	0	1	
Mesquite PD	0	0	0	0	0	0	0	0	0	0	
Mineral Co SO	0	0	0	0	0	0	0	0	0	0	
NV Div Investigations	0	0	0	0	0	0	0	0	0	0	
North Las Vegas PD	4	0	4	0	1	0	0	0	0	3	
Nye Co SO	0	0	0	0	0	0	0	0	0	0	
Pershing Co SO	0	0	0	0	0	0	0	0	0	0	
Reno PD	2	0	2	0	0	0	0	0	0	2	
Sparks PD	0	0	0	0	0	0	0	0	0	0	
Storey Co SO	0	0	0	0	0	0	0	0	0	0	
TMCC PD	0	0	0	0	0	0	0	0	0	0	
UNLV PD	0	0	0	0	0	0	0	0	0	0	
UNR PD	0	0	0	0	0	0	0	0	0	0	
Washoe Co SO	0	0	0	0	0	0	0	0	0	0	
Washoe Co School Dist.	0	0	0	0	0	0	0	0	0	0	
West Wendover PD	0	0	0	0	0	0	0	0	0	0	
White Pine Co SO	0	0	0	0	0	0	0	0	0	0	
Winnemucca PD	0	0	0	0	0	0	0	0	0	0	
Yerington PD	0	0	0	0	0	0	0	0	0	0	
<b>Totals</b>	<b>36</b>	<b>1</b>	<b>35</b>	<b>0</b>	<b>1</b>	<b>0</b>	<b>2</b>	<b>0</b>	<b>8</b>	<b>1</b>	<b>24</b>

## Nevada--Time of Assaults on Officers--UCR

### October 2004

Agency	2:00 AM	4:00 AM	6:00 AM	8:00 AM	10:00 AM	12:00 AM	12:01-2:00 PM	2:00-4:00 PM	4:00-6:00 PM	6:00-8:00 PM	10:00 PM	10:00-12:00 PM
Boulder City PD	0	0	0	0	0	0	0	0	0	0	0	0
Carlin PD	0	0	0	0	0	0	0	0	0	0	0	0
Carson City SO	0	0	0	0	0	0	0	0	3	0	0	0
Churchill Co SO	0	0	0	0	0	0	0	0	0	0	0	0
Clark Co Schl Dist PD	0	0	0	0	0	0	0	0	0	0	0	0
Douglas Co SO	0	0	0	0	0	0	0	0	0	0	0	0
Elko Co SO	0	0	0	0	0	0	0	0	0	0	0	0
Elko PD	0	0	0	0	0	0	0	1	0	0	0	0
Esmeralda Co SO	0	0	0	0	0	0	0	0	0	0	0	0
Eureka Co SO	0	0	0	0	4	0	0	0	0	0	0	0
Fallon PD	0	0	0	0	0	0	0	0	0	0	0	0
Henderson PD	0	0	0	0	0	0	0	0	0	0	0	0
Highway Patrol	1	0	0	0	0	0	1	0	0	0	1	0
Humbolt Co SO	0	0	0	0	0	0	0	0	0	0	0	0
Lander Co SO	0	0	0	0	0	0	0	0	0	0	0	0
Las Vegas Metro PD	1	0	0	6	2	0	3	4	2	3	0	0
Lincoln Co SO	0	0	0	0	0	0	0	0	0	0	0	0
Lovelock PD	0	0	0	0	0	0	0	0	0	0	0	0
Lyon Co SO	1	0	0	0	0	0	0	0	0	0	0	0
Mesquite PD	0	0	0	0	0	0	0	0	0	0	0	0
Mineral Co SO	0	0	0	0	0	0	0	0	0	0	0	0
NV Div Investigations	0	0	0	0	0	0	0	0	0	0	0	0
North LV PD	0	0	0	0	0	0	0	1	0	1	1	1
Nye Co SO	0	0	0	0	0	0	0	0	0	0	0	0
Pershing Co SO	0	0	0	0	0	0	0	0	0	0	0	0
Reno PD	0	0	0	0	0	0	0	0	1	0	1	0
Sparks PD	0	0	0	0	0	0	0	0	0	0	0	0
Storey Co SO	0	0	0	0	0	0	0	0	0	0	0	0
TMCC PD	0	0	0	0	0	0	0	0	0	0	0	0
UNLV PD	0	0	0	0	0	0	0	0	0	0	0	0
UNR PD	0	0	0	0	0	0	0	0	0	0	0	0
Washoe Co SO	0	0	0	0	0	0	0	0	0	0	0	0
Washoe Co Schl PD	0	0	0	0	0	0	0	0	0	0	0	0
West Wendover PD	0	0	0	0	0	0	0	0	0	0	0	0
White Pine Co SO	0	0	0	0	0	0	0	0	0	0	0	0
Winnemucca PD	0	0	0	0	0	0	0	0	0	0	0	0
Yerington PD	0	0	0	0	0	0	0	0	0	0	0	0
Totals	3	0	0	6	6	0	4	6	6	4	3	1



2004 October

**AGE, SEX, AND RACE OF PERSONS CHARGED**  
**18 Years of age and over**  
**(Include those released without having been formally charged)**

CLASSIFICATION OF OFFENSES	SEX															Total Over 18	RACE						
		18	19	20	21	22	23	24	25-29	30-34	35-39	40-44	45-49	50-54	55-59		60-64	over 64	White	Black	American Indian or Alaskan Native	Asian or Pacific Islander	
Murder and Nonnegligent Manslaughter	01a	Male		1										1				2					
		Female				1												1	3				
Manslaughter by Negligence	01b	Male							1									1					
		Female																0	1				
Forcible Rape	02	Male		1			1	1	2	3	4	3	4	1				20					
		Female																0	11	9			
Robbery	03	Male	3	4	4	6	5	2	1	9	9	7	4	7	1	1		63					
		Female	1		2	1	1		1	2	2		4					14	48	29			
Aggravated Assault (Return A-4a-d)	04	Male	4	7	5	6	8	5	3	20	22	15	25	10	9	3	1	1	144				
		Female		1		2		2		6	7	7	9	1	1		1	37	134	38	4	5	
Burglary--Breaking or Entering	05	Male	13	6	10	9	12	6	9	35	44	37	37	14	3	5		240					
		Female	6	4	9	4	2	6	3	17	22	7	11	4	2			97	242	81	6	8	
Larceny--Theft (except Motor Vehicle Theft)	06	Male	23	21	26	18	15	21	13	49	59	60	60	41	30	11	10	3	460				
		Female	11	8	10	10	10	12	33	42	29	28	15	12	3		2	235	540	132	9	14	
Motor Vehicle Theft	07	Male	7	5	6	4	6	13	5	19	10	13	2	1	2	2		95					
		Female	3		1		1			6		3	1	2				17	75	27	3	7	
Other Assaults (Return A-4e)	08	Male	21	16	30	33	33	35	45	143	126	128	124	88	39	20	11	10	902				
		Female	8	12	10	14	14	12	10	40	40	40	30	23	12	5	2	1	273	865	248	19	43
Arson	09	Male							2	1								3					
		Female									1							1	4				
Forgery & Counterfeiting	10	Male	2				2	2	3	6	3	3	1	1	1			24					
		Female	1				2	1	1	1	2	1		2	1		1	13	31	5		1	
Fraud	11	Male	6	4	4	5	5	1	4	22	17	18	13	15	3	4	4	2	127				
		Female	1	1	4	4	1	4	4	11	8	7	7	9	2	2			65	154	27	6	5
Embezzlement	12	Male	3		2	1			1	1	1	2		3	2			16					
		Female		2				1	1	2		2	1	1	1			11	22	3		2	
Stolen Property; Buying, Receiving, Possessing	13	Male	8	3	3	4	6	3	12	17	16	18	17	3	1	2		113					
		Female	1	1	3	2		1		11	6	5	2	3				35	122	20	3	3	
Vandalism	14	Male	7	7	2	2	3	5	3	14	7	6	6	5	3	2		72					
		Female			1					2	3	1	2	2				11	66	14	1	2	
Weapons; Carrying, Possessing, etc.	15	Male	6	5	5	4	9	5	6	22	17	20	11	5	1	1		119					
		Female	1			1			1	3	2		1					9	97	27	1	3	
Prostitution and Commercialized Vice	16	Male			1			2		5	3	2	7	2	1	2		26					
		Female	28	33	23	24	19	20	26	61	29	33	29	11	5	1	1		343	230	117	2	20
Sex Offenses (except Forcible Rape and Prostitution)	17	Male	2		4	4	7	2	4	19	8	12	11	12	7	9	5	9	115				
		Female	1		1	2	1	1	1	7	7	9	2	3	1	1	1		38	127	22		4
Drug Abuse Violations	18	Male	44	47	40	43	42	30	31	106	104	68	70	36	22	7	3	1	694				
Grand Total		Female	11	5	6	9	11	4	3	21	30	22	21	5	7	0	0	0	155	596	235	2	16
(1) Sale/Manufacturing Subtotal	180	Male	6	7	4	11	9	7	5	29	18	13	20	7	8	1	2	0	147				
		Female	1	1	1	2	3	1	0	3	8	5	2	1	3	0	0	0	31	120	57	0	1
Opium or Cocaine and Their Derivatives (Morphine, Heroin, Codeine)	a	Male	1	2	2	5	6	2		14	13	8	4	2	2			61					
		Female	1			1	1	1		1	4		1	1				11	34	38			
Marijuana	b	Male	2	1	2	1		3	3	5	1	2	5	1	1		1		28				
		Female					1			1	1							4	15	16		1	
Synthetic Narcotics--Manufactured Narcotics Which Cause True Drug Addiction (Demerol, Methad)	c	Male	1	1		2	1	2	1	7	3	2	2	7	2	5	1	1	36				
		Female				1				2	2	2				1			6	40	2		
Other Dangerous Non-Narcotic Drugs (Barbiturates, Benzedrine)	d	Male	2	3		3	2		1	3	1	1	4	2				22					
		Female	0	1	1		1			1	1	3	1	1				10	31	1			



2004 October

**AGE, SEX, AND RACE OF PERSONS CHARGED**  
**18 Years of age and under**  
 (Count all Offences even if the Arrest is based on only one charge)

CLASSIFICATION OF OFFENSES	SEX	Under 10	10-12	13-14	15	16	17	Total Under 18	RACE				
									White	Black	American Indian or Alaskan Native	Asian or Pacific Islander	
									Murder and Nonnegligent Manslaughter 01a	Male			
	Female			1			1	2	2				
Manslaughter by Negligence 01b	Male							0					
	Female							0					
Forcible Rape 02	Male		1	2				3					
	Female							0	2		1		
Robbery 03	Male			4	7	4	2	17					
	Female					1		1	6	12			
Aggravated Assault (Return A-4a-d) 04	Male		1	5	4	6	7	23					
	Female		1	1	2	1		5	19	6	1	2	
Burglary--Breaking or Entering 05	Male	1	18	23	8	12	7	69					
	Female			1	1			2	42	30	1	1	
Larceny--Theft (except Motor Vehicle Theft) 06	Male	4	23	42	24	25	22	140					
	Female	2	10	31	18	25	18	104	184	58	1	8	
Motor Vehicle Theft 07	Male		1	3	11	7	8	30					
	Female		1			2	2	5	28	4		3	
Other Assaults (Return A-4e) 08	Male	4	18	35	32	28	23	140					
	Female		15	16	9	13	6	59	146	63	6	7	
Arson 09	Male	1		3				4					
	Female						1	1	4	1			
Forgery & Counterfeiting 10	Male						1	1					
	Female							0		1			
Fraud 11	Male						5	5					
	Female							0	3	2			
Embezzlement 12	Male			3	7	5	2	17					
	Female							0	9	6	1	1	
Stolen Property; Buying, Receiving, Possessing 13	Male		9	19	8	6	6	48					
	Female		3	1			2	6	42	14	1		
Vandalism 14	Male		4	13	4	10	6	37					
	Female		5					5	32	9	1	1	
Prostitution and Commercialized Vice 16	Male							0					
	Female			1		4	5	10	2	6		2	
Sex Offenses (except Forcible Rape and Prostitution) 17	Male		2	8	1	2	2	15					
	Female							0	12	3			
Drug Abuse Violations 18	Male	0	1	13	26	19	27	86					
	Female	0	0	4	4	6	9	23	99	16	2	3	
(1) Sale/Manufacturing Subtotal 180	Male	0	0	1	2	2	2	7					
	Female	0	0	1	0	1	3	5	11	2	0	0	
Opium or Cocaine and Their Derivatives (Morphine, Heroin, Codeine) a	Male				1			1					
	Female						2	2	3				
Marijuana b	Male				1	1	1	3					
	Female						1	1	2	2			
Synthetic Narcotics-Manufactured Narcotics Cause True Drug Addiction (Demec) c	Male			1		1		2					
	Female							0	2				
Other Dangerous Non-Narcotic Drugs (Barbiturates, Benzedrine) d	Male						1	1					
	Female			1		1		2	4				
(2) Possession - Subtotal 185	Male	0	1	12	24	17	25	79					
	Female	0	0	3	4	5	6	18	88	14	2	3	
Opium or Cocaine and Their Derivatives (Morphine, Heroin, Codeine) e	Male			1	1	1		3					
	Female						2	2	4	1			
Marijuana f	Male		1	11	20	14	25	71					
	Female			3	3	5	2	13	74	11	2	3	
Synthetic Narcotics-Manufactured Narcotics Cause True Drug Addiction (Demec) g	Male				2			2					
	Female				1		2	3	9				
Other Dangerous Non-Narcotic Drugs (Barbiturates, Benzedrine) h	Male				1	2		3					
	Female							0	1	2			

CLASSIFICATION OF OFFENSES		SEX											
		Male	0	0	0	0	1	0	1				
Gambling Total	19	Female	0	0	0	0	0	0	0	1	0	0	
Bookmaking (Horses and Sports Book)	a	Male							0				
		Female							0				
Numbers and Lottery	b	Male							0				
		Female							0				
All Other Gambling	c	Male				1			1				
		Female							0	1			
Offenses Against Family and Children	20	Male		1		1			2				
		Female			1	1	1	1	3	3	2		
Driving Under the Influence	21	Male				1		1	3	4			
		Female				1		2	3	7			
Liquor Laws	22	Male	1	1	3	6	21	26	58				
		Female		2	1	7	5	15	64	6	2	3	
Drunkenness	23	Male				1	5	6					
		Female				1	1	2	8				
Disorderly Conduct	24	Male		10	31	29	18	15	103				
		Female		1		1		2	80	71		9	
Vagrancy	25	Male					1	1					
		Female						0		1			
All Other Offenses (except Traffic) Total	26	Male	1	8	51	43	49	45	197				
		Female		2	11	9	11	10	43	213	46	1	6
Suspicion	27	Male							0				
		Female				1		1	1				
Curfew and Loitering Law Violatic	28	Male	1	5	27	19	27	40	119				
		Female		9	22	14	27	16	88	170	36	1	1
Runaway	29	Male	1	1	15	15	11	11	54	1			
		Female		2	17	14	22	5	60	100	12	1	
GRAND TOTAL			16	151	410	318	378	348	1621	1281	405	20	47

Department of Motor Vehicles and Public Safety  
808 West Nye Lane  
Carson City NV 89703

Uniform Crime Reporting

Date

Disposition of Juveniles

TOTAL

1. Handled within Department and released.
2. Referred to Juvenile court.
3. Referred to welfare agency.
4. Released to other police agency.
5. Referred to criminal or adult court.

Nevada UCR  
\*Footnotes / Exceptions

---

**October 2004**

---

Table 1

--Nevada figures are annualized projections.

--"Assault" does not include simple assaults to allow direct comparison between the Nevada rate and the National rate for this Index offense. See Table 8 for a count of all assaults.

Table 2

--The LV Fire Department reports "Arson" offenses for the City of Las Vegas. The population figure for this agency represents jurisdiction and is not added to the county total. Similarly, the School District Police Departments in Clark and Washoe Counties are not added to county population estimates as they represent persons served (student enrollment plus staff.)

--Assault data in this table includes ALL assaults (aggravated and simple) reported for the current month.

--County crime rates are calculated following subtraction of populations of jurisdictions failing to report.

Table 3

-- In the "Nevada vs National Index Crime and Clearance Rates" sections, the "Assaults" numbers do not include simple assaults following FBI guidelines. Therefore, they may be compared directly to National rates.

-- National crime rate figures are the latest available for comparative use (2002). Nevada figures are annualized projections.

Table 13

--At various times, property values recovered will exceed values stolen for the current reporting period.

**General Notes:**

■ The following agency(ies) was unable to submit reports for this month:

-- Any late reports not submitted in time for this publication will be incorporated in to the year-to-date totals in subsequent reports.