

Disclaimer: The following information is preliminary and cannot be certified until it is published in the annual report, Crime and Justice in Nevada, which will be available after July 1, 2004.

UNIFORM CRIME REPORTING PROGRAM
UCR STATISTICAL DATA VERIFICATION FORM

As an agency administrator or designee for the _____, I have
(Name of Agency)
reviewed the UCR monthly statistics for **September 2003** which includes all UCR data
submitted year to date. Based upon my or my designee's review and validation of same, I find
that:

All data contained in the report for my agency is accurate and complete and may be
released and made part of UCR publications for future distribution to the public and other
interested UCR data subscribers.

Data contained in the report is inaccurate or incomplete and may not be published or
released at this time. (If this choice is selected, please provide the reason in the space
provided below.)

Reason: _____

The corrected data will be supplied to the UCR Program by: _____.
(Date)

This document must be signed and mailed to the Uniform Crime Reporting Program, 808 W.
Nye Lane, Carson City, Nevada 89703 or faxed to (775) 687-1843 by **June 15, 2004.**

Signature of Agency Administrator (or designee)

Name/Title of Agency Administrator (print or type)

Agency's Name/Location

Date

Department of Public Safety
Nevada Highway Patrol
Records and Identification Bureau

Monthly Report



SEPTEMBER

2003

**George Togliatti, Director
Department of Public Safety**

**Colonel David Hosmer, Chief
Nevada Highway Patrol**

**Daryl Riersgard, Manager
Records and Identification Bureau**

**Phyllis Yancey, Administrative Assistant II
Tenna Herman, Management Analyst I**

**Prepared by:
Records and Identification Bureau
Uniform Crime Reporting
808 W. Nye Lane
Carson City, Nevada 89703
(775) 687-1600**

Nevada UCR Definitions / Explanations

Uniform Crime Reporting Program

The UCR program is a nationwide, cooperative, statistical effort by over 17,000 city, county and state law enforcement agencies that voluntarily report data on crimes brought to their attention. Law enforcement agencies active in the national program represent 95% of the total population of the United States. While the program's primary objective is to generate a reliable set of crime statistics for use in law enforcement administration, operation and management, its data has over the years become one of the country's leading social indicators.

In Nevada, 36 agencies are currently reporting UCR data to the statewide program representing nearly 99% of its population. Rather than submitting directly to the FBI, local agencies must submit crime data to the state UCR Repository, which compiles, analyzes and submits copies of the reports to the FBI. The Nevada UCR Program prides itself on its responsiveness to local contributing agencies that previously received limited feedback for their efforts. The Nevada program is also responsible for producing and distributing periodic reports of the information contained in its database. As its database has grown, the program's utility has become even more apparent.

Eight offenses serve as an index for gauging fluctuations in overall volumes and rates of crime. Known collectively as the " Crime Index, " these offenses include *the violent crimes of murder, rape, robbery and assault and the property crimes of burglary, larceny, motor vehicle theft and arson*. These offenses were selected as a grouped measuring device because they represent the most common crime problems. They are all serious crimes; either by their very nature or due to the volume and frequency with which they occur.

Index Crimes Definitions

Murder and Non-negligent Manslaughter

Murder and non negligent manslaughter, as defined in the Uniform Crime Reporting Program, is the willful (non-negligent) killing of a human being by another.

The classification of this offense, as for all other Crime Index offenses, is based solely on police investigation as opposed to the determination of a court, medical examiner, coroner, jury or other judicial entity. Not included in the count for this offense classification are deaths caused by negligence, suicide or accident, justifiable homicides and attempts to murder or assaults to murder. These are scored as aggravated assaults.

Nevada UCR Definitions / Explanations

Forcible Rape

Forcible rape, as defined in the program, is the carnal knowledge of a female forcibly and against her will. Assaults or attempts to commit rape by force or threat of force are also included; however, statutory rape (without force) and other sex offenses are excluded.

Robbery

Robbery is the taking or attempting to take anything of value from the care, custody or control of a person or persons by force or threat of force or violence and/or by putting the victim in fear.

Aggravated Assault

Aggravated assault is an unlawful attack by one person upon another for the purpose of inflicting severe or aggravated bodily injury. This type of assault is usually accompanied by the use of a weapon or by means likely to produce death or great bodily harm. Attempts are included since it is not necessary that an injury result when a gun, knife or other weapon is used which could and probably would result in serious personal injury if the crime were successfully completed

Burglary

The Uniform Crime Reporting Program defines burglary as the unlawful entry of a structure to commit a felony or theft. The use of force to gain entry is not required to classify an offense as burglary. Burglary in this program is categorized into three sub classifications: forcible entry, unlawful entry where no force is used and attempted forcible entry.

Larceny-Theft

Larceny-theft is the unlawful taking, carrying, leading, or riding away of property from the possession or constructive possession of another. It includes crimes such as shoplifting, pocket picking, purse-snatching, thefts from motor vehicles, thefts of motor vehicle parts and accessories, and bicycle thefts, etc., in which no use of force, violence, or fraud occurs. In the UCR Program, this crime category does not include embezzlement, "con" games, forgery, and worthless checks. Motor vehicle theft is also excluded from this category inasmuch as it is a separate Crime Index offense.

Motor Vehicle Theft

Defined as the theft or attempted theft of a motor vehicle, this offense category includes the stealing of automobiles, trucks, buses, motorcycles, motor scooters, snowmobiles, etc. The definition excludes the taking of a motor vehicle for temporary use by those persons having lawful access.

Nevada UCR

Definitions / Explanations

Arson

Arson is defined by the Uniform Crime Reporting Program as any willful or malicious burning or attempt to burn, with or without intent to defraud, a dwelling house, public building, a motor vehicle or aircraft, personal property of another, etc. Only fires determined through investigation to have been willfully or maliciously set are classified as arsons. Fires of suspicious or unknown origins are excluded.

Population Estimates

State, county and incorporated city population estimates are prepared and reviewed prior to the end of each calendar year for certification by the governor by March 1. The Nevada Department of Taxation and Nevada State Demographer, Bureau of Business and Economic Research, College of Business Administration, University of Nevada, Reno, prepares these estimates.

Crime Rates

Crime rates involve the number of Index Crimes per unit of population, usually per 100,000 persons. Because Nevada has such a low population, a rate per 1,000 persons is used to reflect a more realistic volume. No attempt is made to incorporate transient populations or other factors that contribute to the ratio and types of crime in given areas. Any effort to make comparisons of crime rates between areas should be tempered by these population and environmental variables.

Crime rates are one of the most meaningful statistical elements. Computation of crime rates per 1,000 population is achieved by dividing the community's population by 1,000, then dividing the number of offenses in each class by that number. The answer is the number of offenses per 1,000 population and is the crime rate for that particular offense. In Table 2, the County Total Crime Rate is computed after subtracting the population figure for all non-reporting agencies for the current month.

The index offense "Aggravated Assault" is an item of special interest to users of Nevada's UCR report. In Tables 1 & 3, where Nevada and National crime rates are compared, "simple assaults" are subtracted from the total of all assaults following FBI UCR rules, thus allowing for direct comparison. However, total assaults (simple and aggravated) are also presented in the Nevada report. This is because the Nevada UCR staff believes this figure is an important indicator of risk for citizens and it presents a more balanced picture of this portion of the crime index to law enforcement personnel.

The Federal Bureau of Investigation, Uniform Crime Reporting Section, publishes national rates.

Clearance Rates

The percentage of crimes cleared is obtained by dividing the number of offenses cleared by the number of offenses known. This number is then multiplied by 100.

Nevada--Statewide Summary--UCR Index Crimes

SEPTEMBER 2003

Offense	Crimes this Month	# Cleared this Month	% Cleared this Month	Crimes this YTD	# Cleared this YTD	% Cleared this YTD	% Cleared			2003 NV Rate / 1,000 (Proj) *	2002 NV Rate / 1,000	2001 Natl. Rate / 1,000
							SEPTEMBER Crimes 2002	SEPTEMBER Cleared 2002	SEPTEMBER Cleared 2002			
Murder	25	11	44	144	66	46	14	8	57	0.09	0.09	0.56
Rape	79	24	30	681	200	29	63	25	40	0.41	0.44	0.32
Robbery	399	60	15	3,796	754	20	437	97	22	2.29	2.40	1.48
Assault *	653	222	34	5,753	2,208	38	543	304	56	3.48	3.58	3.19
Burglary	1,670	346	21	16,151	3,570	22	1,721	379	22	9.76	8.89	7.41
Larceny	4,057	354	9	38,286	6,400	17	4,265	1,265	30	23.14	22.26	24.85
MV Theft	1,680	204	12	14,929	1,836	12	1,452	221	15	9.02	8.20	4.31
Arson	55	3	5	444	59	13	55	10	18	0.27	0.30	0.35
Total	8,618	1,224	14	80,184	15,093	19	8,550	2,309	27	48.46	46.14	42.47

* The projected Crime Rate for Assaults is computed after subtracting Simple Assaults from the total for all Assaults following FBI guidelines. Therefore, this rate may be compared directly to the National Rate. See Table 3 and the "Footnotes/Exceptions page for further information.

Nevada UCR - - Monthly Crime/ Clearance Summary - - All Crimes

Contributing Agency	Est. Pop	Murder		Rape		Robbery		Assault		Burglary		Larceny		MV Theft		Arson		Total Crimes	Crime Rate	Clearances	Clearance Rate
Carson County																		SEPTEMBER 2003			
Carson SO	54,844	0	0	0	0	0	0	78	40	35	8	115	22	13	2	2	0	243	4.43	72	29.6%
County Total	54,844	0	0	0	0	0	0	78	40	35	8	115	22	13	2	2	0	243	4.43	72	29.6%
Churchill County																					
Churchill SO	16,939	0	0	0	2	1	0	28	18	11	2	8	4	2	2	0	0	50	2.95	28	56.0%
Fallon PD	8,178	0	0	0	0	0	0	20	11	3	0	32	6	2	0	0	0	57	6.97	17	29.8%
County Total	25,117	0	0	0	2	1	0	48	29	14	2	40	10	4	2	0	0	107	4.26	45	42.1%
Clark County																					
Boulder PD	14,842	0	0	0	0	0	0	3	1	7	1	9	2	2	1	0	0	21	1.41	5	23.8%
Clark Co. Schools PD*	284,512	0	0	0	0	3	2	83	65	28	3	55	11	6	1	3	1	178	0.63	83	46.6%
Henderson	209,486	0	0	0	0	0	0	0	0	0	0	0	0	0	0	0	0	0	0.00	0	0.0%
LV Metro PD	1,176,146	19	7	55	12	301	33	2,137	429	1,096	264	2,409	11	1,268	151	31	0	7,316	6.22	907	12.4%
LV Fire Dept*														4	0			4	N/A	0	0.0%
Mesquite	13,216	0	0	0	0	0	0	13	12	0	0	19	13	2	2	0	0	34	2.57	27	79.4%
North Las Vegas PD	135,967	2	1	5	1	31	5	246	147	121	11	246	51	158	12	5	0	814	5.99	228	28.0%
UNLV PD*	26,345	0	0	2	0	0	0	7	4	8	0	32	0	2	0	0	0	51	1.94	4	7.8%
County Total	1,549,657	21	8	62	13	335	40	2,489	658	1,260	279	2,770	88	1,438	167	43	1	8,418	5.43	1,254	14.9%
Douglas County																					
Douglas SO	44,212	0	0	0	0	1	1	50	35	23	2	53	20	5	5	2	2	134	3.03	65	48.5%
County Total	44,212	0	0	0	0	1	1	50	35	23	2	53	20	5	5	2	2	134	3.03	65	48.5%

*Population figure not included in county total
Table 2

Nevada UCR - - Monthly Crime/ Clearance Summary - - All Crimes

Contributing Agency	Est. Pop	Murder		Rape		Robbery		Assault		Burglary		Larceny		MV Theft		Arson		Total Crimes	Crime Rate	Clearances	Clearance Rate
Elko County																		SEPTEMBER 2003			
Elko SO	23,153	0	0	1	0	0	0	3	2	11	1	5	0	3	1	0	0	23	0.99	4	17.4%
Carlin PD	2,074	0	0	0	0	0	0	5	4	0	0	9	3	0	0	0	0	14	6.75	7	50.0%
Elko PD	16,690	0	0	2	1	1	2	27	17	19	2	42	4	5	0	0	0	96	5.75	26	27.1%
WestWendover PD	4,661	0	0	0	0	0	0	8	8	1	1	7	2	1	1	0	0	17	3.65	12	70.6%
County Total	46,578	0	0	3	1	1	2	43	31	31	4	63	9	9	2	0	0	150	3.22	49	32.7%
Esmeralda County																					
Esmeralda SO	1,125	0	0	1	1	0	0	3	3	0	0	0	0	0	0	0	0	4	3.56	4	100.0%
County Total	1,125	0	0	1	1	0	0	3	3	0	0	0	0	0	0	0	0	4	3.56	4	100.0%
Eureka County																					
Eureka SO	1,384	0	0	0	0	0	0	1	0	1	0	2	0	0	0	0	0	4	2.89	0	0.0%
County Total	1,384	0	0	0	0	0	0	1	0	1	0	2	0	0	0	0	0	4	2.89	0	0.0%
Humboldt County																					
Humboldt SO	9,074	0	0	0	0	0	0	8	5	3	1	1	0	0	0	0	0	12	1.32	6	50.0%
Winnemucca PD	7,234	0	0	2	2	0	0	9	9	4	1	5	3	2	0	1	0	23	3.18	15	65.2%
County Total	16,308	0	0	2	2	0	0	17	14	7	2	6	3	2	0	1	0	35	2.15	21	60.0%

*Population figure not included in county total
Table 2

Nevada UCR - - Monthly Crime/ Clearance Summary - - All Crimes

Contributing Agency	Est. Pop	Murder		Rape		Robbery		Assault		Burglary		Larceny		MV Theft		Arson		Total Crimes	Crime Rate	Clearances	Clearance Rate
Lander County																		SEPTEMBER 2003			
Lander SO	5,547	0	0	0	0	0	0	0	0	0	0	0	0	0	0	0	0	0	0.00	0	0.0%
County Total	5,547	0	0	0	0	0	0	0	0	0	0	0	0	0	0	0	0	0	0.00	0	0.0%
Lincoln County																					
Lincoln SO	3,879	0	0	0	0	0	0	3	1	4	0	12	1	2	0	0	0	21	5.41	2	9.5%
County Total	3,879	0	0	0	0	0	0	3	1	4	0	12	1	2	0	0	0	21	5.41	2	9.5%
Lyon County																					
Lyon SO	35,917	0	0	1	0	0	0	38	37	18	2	43	11	3	0	0	0	103	2.87	50	48.5%
Yerington PD	2,859	0	0	0	0	0	0	3	5	3	2	0	1	0	0	0	0	6	2.10	8	133.3%
County Total	38,776	0	0	1	0	0	0	41	42	21	4	43	12	3	0	0	0	109	2.81	58	53.2%
Mineral County																					
Mineral SO	4,695	0	0	0	0	0	0	2	2	1	0	2	1	0	0	0	0	5	1.06	3	60.0%
County Total	4,695	0	0	0	0	0	0	2	2	1	0	2	1	0	0	0	0	5	1.06	3	60.0%
Nye County																					
Nye SO	35,039	0	0	0	0	0	0	0	0	0	0	0	0	0	0	0	0	0	0.00	0	0.0%
County Total	35,039	0	0	0	0	0	0	0	0	0	0	0	0	0	0	0	0	0	0.00	0	0.0%

*Population figure not included in county total
Table 2

Nevada UCR - - Monthly Crime/ Clearance Summary - - All Crimes

Contributing Agency	Est. Pop	Murder		Rape		Robbery		Assault		Burglary		Larceny		MV Theft		Arson		Total Crimes	Crime Rate	Clearances	Clearance Rate
Pershing County																		SEPTEMBER 2003			
Pershing SO	4,670	1	1	1	0	0	0	7	5	1	0	4	1	0	0	0	0	14	3.00	7	50.0%
Lovelock PD	2,267	0	0	0	0	0	0	9	5	6	2	1	1	0	0	0	0	16	7.06	8	50.0%
County Total	6,937	1	1	1	0	0	0	16	10	7	2	5	2	0	0	0	0	30	4.32	15	50.0%
Storey County																					
Storey	3,639	0	0	0	0	0	0	3	1	1	0	5	0	0	0	0	0	9	2.47	1	11.1%
County Total	3,639	0	0	0	0	0	0	3	1	1	0	5	0	0	0	0	0	9	2.47	1	11.1%
Washoe County																					
Washoe SO	96,334	1	0	0	0	0	1	64	40	44	5	86	9	21	5	0	0	216	2.24	60	27.8%
Reno PD	187,834	2	1	7	2	51	12	374	197	140	10	597	122	134	9	5	0	1,310	6.97	353	26.9%
Sparks PD	75,255	0	1	1	3	10	4	119	92	68	23	207	48	44	10	0	0	449	5.97	181	40.3%
UNR PD*	15,000	0	0	1	0	0	0	1	0	3	2	16	0	1	0	0	0	22	1.47	2	9.1%
Washoe Co SchI PD*	66,515	0	0	0	0	0	0	0	0	5	0	25	6	1	1	2	0	33	0.50	7	21.2%
TMCC PD*	11,878	0	0	0	0	0	0	1	0	0	0	1	0	0	0	0	0	2	0.17	0	0.0%
County Total	359,423	3	2	9	5	61	17	559	329	260	40	932	185	201	25	7	0	2,032	5.65	603	29.7%
White Pine County																					
White Pine SO	8,863	0	0	0	0	0	0	11	11	5	3	9	1	3	1	0	0	28	3.16	16	57.1%
County Total	8,863	0	0	0	0	0	0	11	11	5	3	9	1	3	1	0	0	28	3.16	16	57.1%
Grand Total	2,206,023	25	11	79	24	399	60	3,364	1,206	1,670	346	4,057	354	1,680	204	55	3	11,329	5.14	2,208	19.5%

*Population figure not included in county total
Table 2

Nevada UCR - - Monthly Crimes/Clearances Summary - - Index Crimes

SEPTEMBER 2003

	Est. Pop	Murder		Rape		Robbery		Assault		Burglary		Larceny		MV Theft		Arson		Total Crimes	Crime Rate	Total Clear	Clearance Rate
Statewide Totals																					
(Crimes/Clearances)	2,206,023	25	11	79	24	399	60	653	222	1670	346	4057	354	1680	204	55	3	8618	3.91	1224	14.20

Nevada (Projected 2003) vs National (2001) Index Crime Rates

(per 1,000 population)

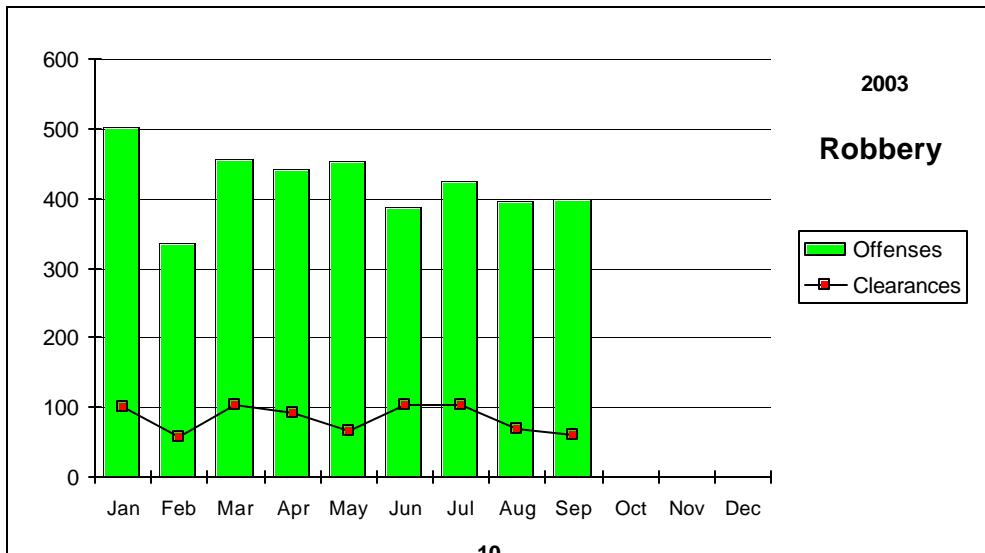
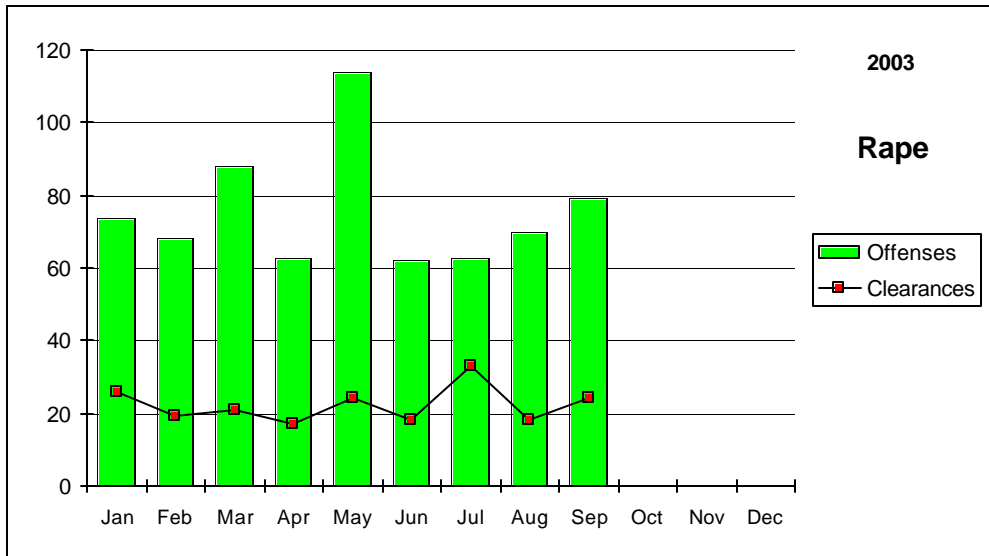
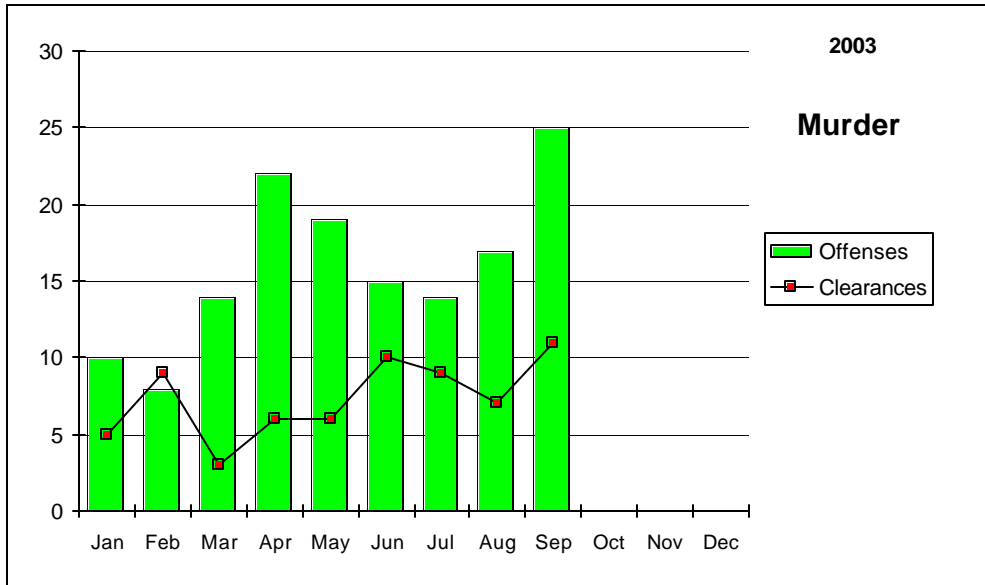
	Murder	Rape	Robbery	Assault	Burglary	Larceny	MV Theft	Arson	Crime Rate
Nevada	0.09	0.41	2.29	3.48	9.76	23.14	9.02	0.27	48.46
National	0.56	0.32	1.48	3.19	7.41	24.85	4.31	0.35	41.85

Nevada (Projected 2003) vs National (2001) Crime Clearance Rates

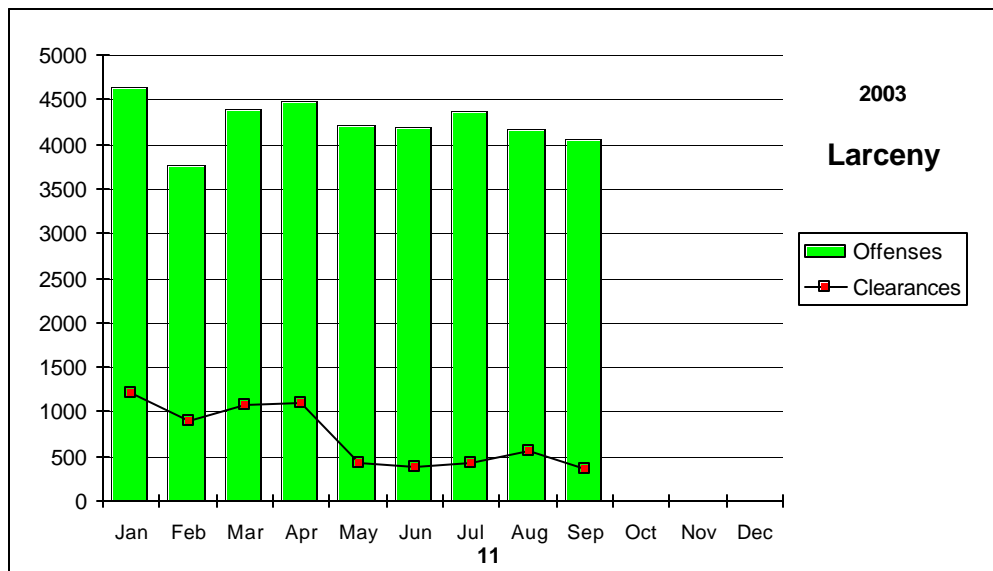
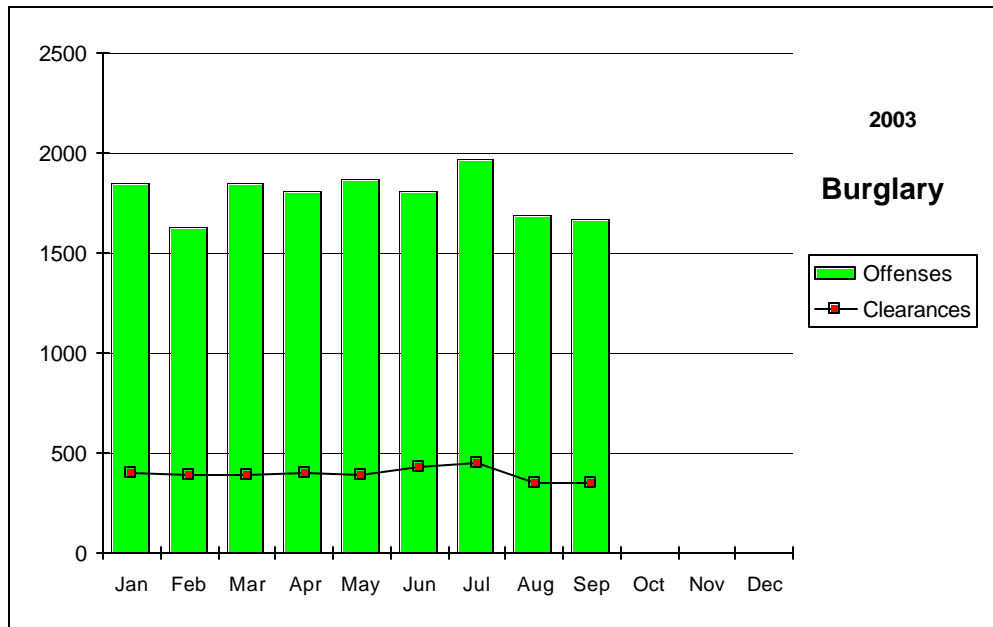
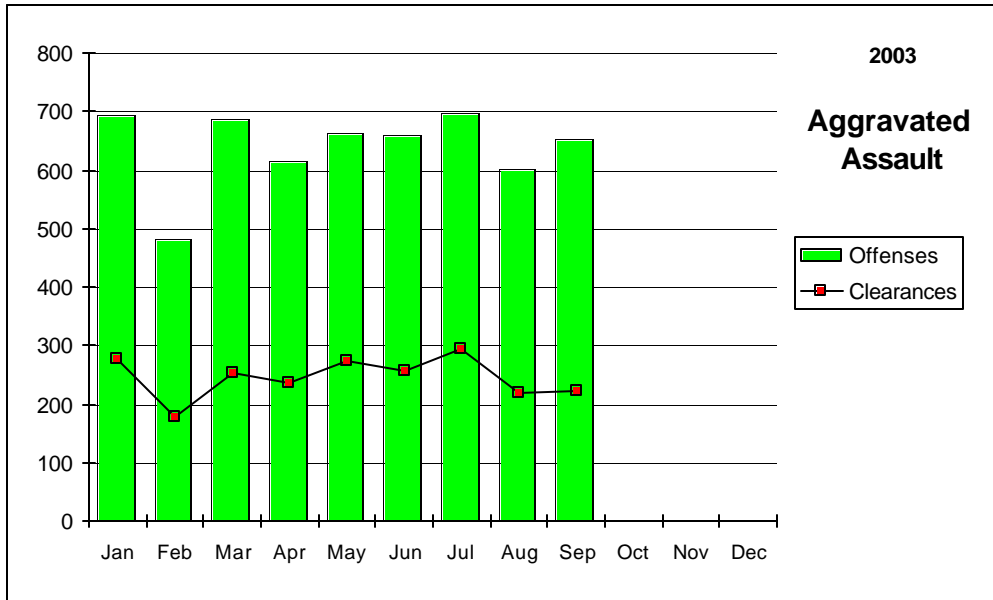
(by Percent)

	Murder	Rape	Robbery	Assault	Burglary	Larceny	MV Theft	Arson	Clear Rate
Nevada	45.83	29.37	19.86	38.38	22.10	16.72	12.30	13.29	18.82
National	62.40	44.30	24.90	56.10	12.70	17.60	13.60	16.00	19.60

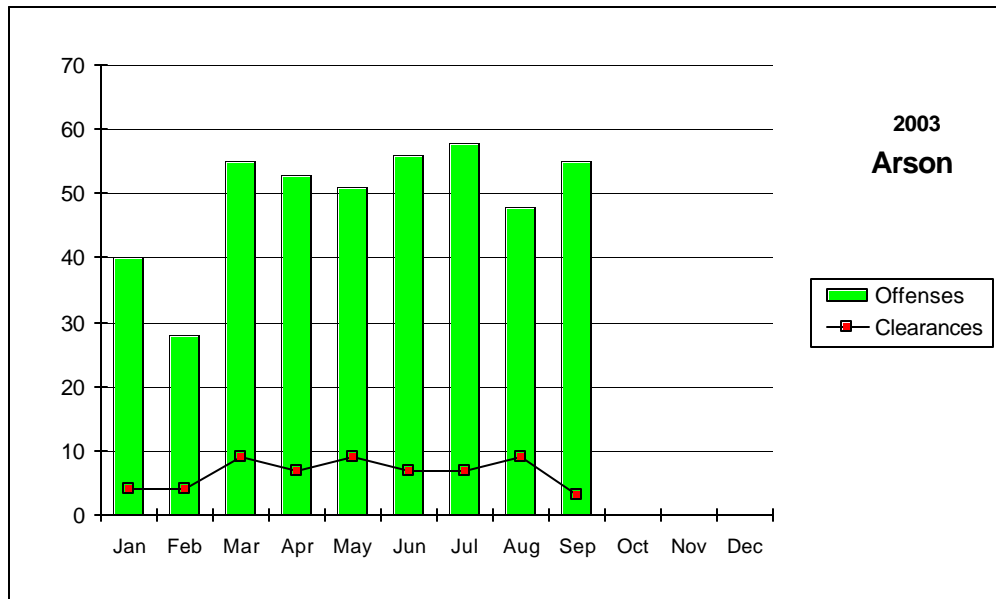
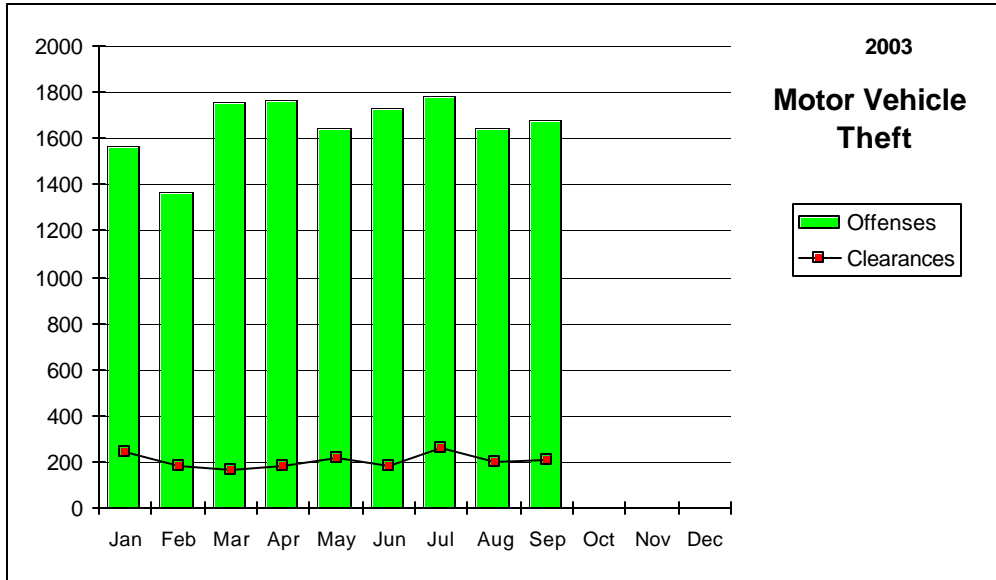
Nevada--Graphic Summary--UCR



Nevada--Graphic Summary--UCR



Nevada--Graphic Summary--UCR



Nevada--Murder--Incidence Level Variation--UCR

SEPTEMBER 2003

Agency	SEPTEMBER	SEPTEMBER	YTD	2003	SEPTEMBER	SEPTEMBER	YTD	2002
	R 2003 Offenses	R 2003 Cleared	Offense s	YTD Cleared	R 2002 Offenses	R 2002 Cleared	Offense s	YTD Cleared
Boulder	0	0	1	0	0	0	0	0
Carlin PD	0	0	0	0	0	0	0	0
Carson SO	0	0	0	0	0	0	0	0
Churchill SO	0	0	0	0	0	0	0	0
Clark Co Schl PD	0	0	0	0	0	0	0	0
Douglas SO	0	0	0	0	0	0	1	1
Elko PD	0	0	0	0	0	0	0	0
Elko SO	0	0	1	1	0	0	1	1
Esmeralda SO	0	0	0	0	0	0	0	0
Eureka SO	0	0	0	0	0	0	0	0
Fallon PD	0	0	0	0	0	0	0	0
Henderson PD	0	0	2	1	0	0	2	3
Humboldt SO	0	0	0	0	0	0	0	0
Lander SO	0	0	0	0	0	0	0	0
Lincoln SO	0	0	0	0	0	0	0	0
Lovelock PD	0	0	0	0	0	0	0	0
LV Fire Dept	0	0	0	0	0	0	0	0
LV Metro	19	7	105	41	12	9	106	60
Lyon SO	0	0	0	0	0	0	0	0
Mesquite PD	0	0	1	0	0	0	0	0
Mineral SO	0	0	0	0	0	0	1	1
NLVPD	2	1	16	9	3	1	17	4
Nye SO	0	0	0	0	0	0	2	1
Pershing SO	1	1	1	1	0	0	0	0
Reno PD	2	1	9	6	1	0	8	7
Sparks PD	0	1	3	5	0	0	2	5
Storey SO	0	0	0	0	0	0	0	0
TMCC PD	0	0	0	0	0	0	0	0
UNLV PD	0	0	0	0	0	0	0	0
UNR PD	0	0	0	0	0	0	0	0
Washoe SO	1	0	5	2	0	0	1	0
Washoe Co Schl PD	0	0	0	0	0	0	0	0
Wendover PD	0	0	0	0	0	0	1	1
White Pine SO	0	0	0	0	0	0	0	0
Winnemucca PD	0	0	0	0	0	0	0	0
Yerington PD	0	0	0	0	0	0	0	0
TOTALS	25	11	144	66	16	10	142	84

Nevada--Rape--Incidence Level Variation--UCR

SEPTEMBER 2003

Agency	SEPTEMBER	SEPTEMBER	YTD	2003	SEPTEMBER	SEPTEMBER	YTD	2002
	R 2003 Offenses	R 2003 Cleared	Offense s	YTD Cleared	R 2002 Offenses	R 2002 Cleared	Offense s	YTD Cleared
Boulder	0	0	0	0	0	0	0	0
Carlin PD	0	0	0	0	0	0	0	0
Carson SO	0	0	1	0	0	0	29	6
Churchill SO	0	2	13	5	1	1	15	11
Clark Co Schl PD	0	0	0	0	0	0	0	0
Douglas SO	0	0	0	0	0	0	0	0
Elko PD	2	1	5	4	1	1	3	3
Elko SO	1	0	8	5	0	0	4	0
Esmeralda SO	1	1	1	1	0	0	0	0
Eureka SO	0	0	0	0	0	0	0	0
Fallon PD	0	0	1	0	0	0	1	1
Henderson PD	0	0	60	17	10	5	79	27
Humboldt SO	0	0	0	0	0	0	0	0
Lander SO	0	0	2	0	0	0	0	0
Lincoln SO	0	0	1	0	0	0	0	0
Lovelock PD	0	0	-1	0	0	0	2	1
LV Fire Dept	0	0	0	0	0	0	0	0
LV Metro	55	12	415	93	55	7	350	119
Lyon SO	1	0	6	2	1	0	6	1
Mesquite PD	0	0	0	0	0	0	0	0
Mineral SO	0	0	0	0	0	0	1	1
NLVPD	5	1	39	20	5	2	35	18
Nye SO	0	0	2	2	0	0	0	0
Pershing SO	1	0	3	1	1	0	3	1
Reno PD	7	2	72	11	6	1	96	13
Sparks PD	1	3	36	29	5	9	42	46
Storey SO	0	0	0	0	0	0	1	1
TMCC PD	0	0	0	0	0	0	0	0
UNLV PD	2	0	3	1	0	0	2	0
UNR PD	1	0	3	0	1	0	1	0
Washoe SO	0	0	4	3	0	0	6	2
Washoe Co Schl PD	0	0	0	1	0	0	0	0
Wendover PD	0	0	1	0	0	0	2	2
White Pine SO	0	0	2	1	0	0	1	1
Winnemucca PD	2	2	4	4	1	1	2	2
Yerington PD	0	0	0	0	0	0	0	0
TOTALS	79	24	681	200	87	27	681	256

Nevada--Robbery--Incidence Level Variation--UCR

SEPTEMBER 2003

Agency	SEPTEMBER	SEPTEMBER	YTD	2003	SEPTEMBER	SEPTEMBER	YTD	2002
	R 2003 Offenses	R 2003 Cleared	Offense s	YTD Cleared	R 2002 Offenses	R 2002 Cleared	Offense s	YTD Cleared
Boulder	0	0	2	1	0	0	2	1
Carlin PD	0	0	0	0	0	0	0	0
Carson SO	0	0	16	5	2	0	22	10
Churchill SO	1	0	1	0	0	0	1	0
Clark Co Schl PD	3	2	26	13	1	0	14	5
Douglas SO	1	1	5	4	2	1	8	5
Elko PD	1	2	8	3	0	0	5	0
Elko SO	0	0	2	2	0	0	3	2
Esmeralda SO	0	0	0	0	0	0	0	0
Eureka SO	0	0	0	0	0	0	0	0
Fallon PD	0	0	6	2	0	1	4	1
Henderson PD	0	0	82	23	14	7	136	32
Humboldt SO	0	0	0	0	0	0	0	0
Lander SO	0	0	1	0	0	0	1	0
Lincoln SO	0	0	0	0	0	0	1	0
Lovelock PD	0	0	0	0	0	0	0	0
LV Fire Dept	0	0	0	0	0	0	0	0
LV Metro	301	33	2939	517	362	77	2694	519
Lyon SO	0	0	4	1	0	0	1	0
Mesquite PD	0	0	3	1	0	0	1	1
Mineral SO	0	0	0	0	0	0	1	1
NLVPD	31	5	247	41	36	3	342	60
Nye SO	0	0	8	3	0	0	13	7
Pershing SO	0	0	0	0	0	0	1	0
Reno PD	51	12	342	99	34	9	318	86
Sparks PD	10	4	71	23	3	1	73	34
Storey SO	0	0	4	2	0	0	0	0
TMCC PD	0	0	0	0	0	0	0	0
UNLV PD	0	0	3	1	0	0	4	1
UNR PD	0	0	0	0	0	0	0	0
Washoe SO	0	1	16	7	2	1	10	4
Washoe Co Schl PD	0	0	5	5	0	0	1	0
Wendover PD	0	0	2	0	0	0	1	0
White Pine SO	0	0	0	0	0	0	2	1
Winnemucca PD	0	0	3	1	0	0	1	0
Yerington PD	0	0	0	0	0	0	0	0
TOTALS	399	60	3796	754	456	100	3660	770

Nevada--Aggravated Assault--Incidence Level Variation--UCR

SEPTEMBER 2003

Agency	SEPTEMBER	SEPTEMBER	2003 YTD		SEPTEMBER	SEPTEMBER	2002 YTD	
	2003 Offenses	2003 Cleared	Offenses	Cleared	2002 Offenses	2002 Cleared	Offenses	Cleared
Boulder	3	1	29	13	0	0	43	31
Carlin PD	0	0	7	6	3	3	8	6
Carson SO	17	9	182	96	25	13	149	70
Churchill SO	6	4	44	33	7	3	30	25
Clark Co SchI PD	3	3	27	16	3	3	28	21
Douglas SO	3	0	30	15	6	3	34	20
Elko PD	1	1	12	3	4	4	18	9
Elko SO	2	2	10	8	1	1	15	8
Esmeralda SO	3	3	4	4	0	0	1	1
Eureka SO	0	0	3	2	0	0	5	2
Fallon PD	0	0	6	3	2	1	11	7
Henderson PD	0	0	118	100	13	9	109	96
Humboldt SO	6	2	40	25	5	4	43	26
Lander SO	0	0	15	5	0	0	28	16
Lincoln SO	0	0	1	1	1	1	2	1
Lovelock PD	3	2	13	10	0	0	3	2
LV Fire Dept	0	0	0	0	0	0	0	0
LV Metro	429	83	3500	796	456	185	3485	1446
Lyon SO	7	6	56	48	4	4	45	42
Mesquite PD	0	0	12	11	1	1	6	6
Mineral SO	0	0	2	2	0	0	3	3
NLVPD	71	38	606	321	52	30	605	332
Nye SO	0	0	63	63	5	6	82	70
Pershing SO	3	3	18	11	2	1	9	7
Reno PD	51	31	499	275	54	28	730	391
Sparks PD	20	14	158	134	14	19	150	141
Storey SO	0	0	0	0	7	2	25	10
TMCC PD	0	0	0	0	0	0	0	0
UNLV PD	1	0	5	3	0	0	3	2
UNR PD	0	0	2	1	0	0	2	2
Washoe SO	18	14	241	158	19	6	125	50
Washoe Co SchI PD	0	0	4	4	2	2	5	5
Wendover PD	2	2	7	7	2	2	10	8
White Pine SO	3	3	25	22	7	6	19	17
Winnemucca PD	1	1	10	9	0	0	6	6
Yerington PD	0	0	4	3	1	0	8	4
TOTALS	653	222	5753	2208	696	337	5845	2883

Nevada--All Assaults--Incidence Level Variation--UCR

SEPTEMBER 2003

Agency	SEPTEMBER	SEPTEMBER	2003 YTD	2003 YTD	SEPTEMBER	SEPTEMBER	2002 YTD	2002 YTD
	2003	2003			2002	2002		
	Offenses	Cleared	Offenses	Cleared	Offenses	Cleared	Offenses	Cleared
Boulder	3	1	34	16	4	2	130	37
Carlin PD	5	4	21	16	3	3	16	13
Carson SO	85	39	741	360	78	40	683	366
Churchill SO	21	19	169	135	28	18	171	134
Clark Co Schl PD	83	65	616	399	82	56	590	357
Douglas SO	50	35	423	301	29	21	366	289
Elko PD	27	17	220	96	24	15	192	105
Elko SO	3	2	16	12	12	8	78	49
Esmeralda SO	3	3	5	5	0	0	3	3
Eureka SO	1	0	8	4	0	0	10	4
Fallon PD	18	19	178	124	20	11	154	93
Henderson PD	0	0	1288	923	198	144	1639	1282
Humboldt SO	8	5	51	32	6	4	45	27
Lander SO	0	0	50	34	2	1	45	23
Lincoln SO	3	1	14	9	2	1	18	12
Lovelock PD	9	5	45	39	6	6	48	46
LV Fire Dept	0	0	0	0	0	0	0	0
LV Metro	2137	429	18656	3963	2384	1016	17865	7683
Lyon SO	38	37	345	324	36	34	341	333
Mesquite PD	13	12	153	126	27	18	197	139
Mineral SO	2	2	29	31	2	2	26	26
NLVPD	246	147	2157	1149	211	132	2106	1252
Nye SO	0	0	438	438	52	53	507	462
Pershing SO	7	5	36	25	3	1	23	14
Reno PD	374	197	3268	1678	369	166	3112	1577
Sparks PD	119	92	1181	994	106	101	1028	917
Storey SO	3	1	20	8	7	2	25	10
TMCC PD	1	0	1	0	0	0	2	0
UNLV PD	7	4	23	16	0	0	13	11
UNR PD	1	0	19	6	1	1	9	8
Washoe SO	64	40	654	420	84	55	667	454
Washoe Co Schl PD	0	0	20	20	2	2	181	171
Wendover PD	8	8	35	31	6	5	40	30
White Pine SO	11	11	85	72	14	10	63	51
Winnemucca PD	9	9	72	67	7	5	74	68
Yerington PD	3	5	47	42	1	0	10	5
TOTALS	3362	1214	31118	11915	3806	1933	30477	16051

Nevada--Burglary--Incidence Level Variation--UCR

SEPTEMBER 2003

Agency	SEPTEMBER 2003 Offenses	SEPTEMBER 2003 Cleared	YTD Offense s	2003 YTD Cleared	SEPTEMBER 2002 Offenses	SEPTEMBER 2002 Cleared	YTD Offense s	2002 YTD Cleared
Boulder	7	1	85	29	8	2	59	10
Carlin PD	0	0	10	5	1	0	9	0
Carson SO	35	8	325	41	33	7	300	43
Churchill SO	11	2	57	16	3	2	47	13
Clark Co Schl PD	28	3	201	35	14	2	225	29
Douglas SO	23	2	206	38	15	7	154	38
Elko PD	19	2	101	9	13	4	111	28
Elko SO	11	1	75	15	11	1	95	19
Esmeralda SO	0	0	5	2	0	0	2	1
Eureka SO	1	0	4	0	2	0	2	0
Fallon PD	3	0	46	10	5	1	41	6
Henderson PD	0	0	754	94	135	13	1130	163
Humboldt SO	3	1	22	3	4	2	36	7
Lander SO	0	0	21	4	1	0	27	4
Lincoln SO	4	0	20	8	3	1	10	2
Lovelock PD	6	2	20	10	4	0	18	13
LV Fire Dept	0	0	0	0	0	0	0	0
LV Metro	1096	264	9631	2523	999	209	8240	2326
Lyon SO	18	2	172	23	8	1	113	19
Mesquite PD	0	0	10	10	3	2	14	9
Mineral SO	1	0	28	3	1	1	18	4
NLVPD	121	11	1246	137	132	14	1093	97
Nye SO	0	0	320	143	28	16	308	150
Pershing SO	1	0	29	5	4	0	13	0
Reno PD	140	10	1418	139	96	13	975	109
Sparks PD	68	23	628	165	65	26	518	155
Storey SO	1	0	6	0	1	0	9	1
TMCC PD	0	0	4	0	2	0	7	0
UNLV PD	8	0	104	5	12	0	60	3
UNR PD	3	2	18	2	6	0	23	0
Washoe SO	44	5	401	40	38	2	320	31
Washoe Co Schl PD	5	0	48	8	5	0	8	0
Wendover PD	1	1	14	3	4	1	25	9
White Pine SO	5	3	41	9	3	0	27	1
Winnemucca PD	4	1	43	17	8	4	59	16
Yerington PD	3	2	38	19	2	0	36	21
TOTALS	1670	346	16151	3570	1669	331	14132	3327

Nevada--Larceny--Incidence Level Variation--UCR

SEPTEMBER 2003

Agency	SEPTEMBER 2003		YTD 2003		SEPTEMBER 2002		YTD 2002	
	R Offenses	R Cleared	Offenses	Cleared	R Offenses	R Cleared	Offenses	Cleared
Boulder	9	2	115	14	16	2	110	13
Carlin PD	9	3	31	10	3	0	35	6
Carson SO	115	22	879	171	116	18	931	111
Churchill SO	8	4	113	31	11	0	124	26
Clark Co Schi PD	55	11	585	81	69	3	524	53
Douglas SO	53	20	548	152	54	14	487	150
Elko PD	42	4	290	34	31	6	324	58
Elko SO	5	0	66	9	14	2	81	12
Esmeralda SO	0	0	2	2	0	0	2	0
Eureka SO	2	0	10	2	1	1	10	3
Fallon PD	32	6	322	58	33	3	303	44
Henderson PD	0	0	1593	352	230	39	1941	466
Humboldt SO	1	0	35	13	5	0	50	12
Lander SO	0	0	25	3	3	0	46	3
Lincoln SO	12	1	32	6	4	0	18	1
Lovelock PD	1	1	25	17	8	8	29	20
LV Fire Dept	0	0	0	0	0	0	0	0
LV Metro	2409	11	22079	2853	2223	522	18150	5264
Lyon SO	43	11	316	74	33	3	279	54
Mesquite PD	19	13	176	50	14	8	108	59
Mineral SO	2	1	15	6	1	0	17	6
NLVPD	246	51	2004	419	266	49	2300	509
Nye SO	0	0	366	203	53	29	457	241
Pershing SO	4	1	40	15	9	1	51	9
Reno PD	597	122	5427	1104	608	117	5614	978
Sparks PD	207	48	1825	510	167	57	1870	559
Storey SO	5	0	29	2	4	0	30	3
TMCC PD	1	0	9	0	2	0	12	0
UNLV PD	32	0	188	5	52	1	263	13
UNR PD	16	0	100	2	22	0	94	4
Washoe SO	86	9	555	73	75	13	695	122
Washoe Co Schi PD	25	6	189	40	21	1	89	30
Wendover PD	7	2	73	21	10	2	107	22
White Pine SO	9	1	98	21	8	1	89	10
Winnemucca PD	5	3	108	39	18	6	110	34
Yerington PD	0	1	18	8	1	1	30	20
TOTALS	4057	354	38286	6400	4185	907	35380	8915

Nevada--MV Theft--Incidence Level Variation--UCR

SEPTEMBER 2003

Agency	SEPTEMBER 2003		YTD Offenses	2003 YTD Cleared	SEPTEMBER 2002		YTD Offenses	2002 YTD Cleared
	R Offenses	R Cleared			R Offenses	R Cleared		
Boulder	2	1	22	16	7	5	20	10
Carlin PD	0	0	7	3	0	0	5	4
Carson SO	13	2	127	19	10	1	97	13
Churchill SO	2	2	35	17	1	1	22	12
Clark Co Schl PD	6	1	39	3	4	0	36	2
Douglas SO	5	5	40	30	2	2	48	37
Elko PD	5	0	24	4	1	0	22	7
Elko SO	3	1	18	10	1	1	14	10
Esmeralda SO	0	0	0	0	1	1	1	1
Eureka SO	0	0	4	2	0	0	0	0
Fallon PD	2	0	17	3	5	3	21	9
Henderson PD	0	0	746	40	110	7	807	61
Humboldt SO	0	0	4	2	3	3	9	5
Lander SO	0	0	3	1	1	1	7	1
Lincoln SO	2	0	7	0	0	0	6	3
Lovelock PD	0	0	0	0	0	0	3	3
LV Fire Dept	0	0	0	0	0	0	0	0
LV Metro	1268	151	10744	1328	1138	166	8983	1382
Lyon SO	3	0	57	13	6	2	36	12
Mesquite PD	2	2	30	11	3	3	32	16
Mineral SO	0	0	0	0	1	1	2	1
NLVPD	158	12	1308	81	153	11	1165	82
Nye SO	0	0	44	25	5	4	55	35
Pershing SO	0	0	1	0	0	0	2	0
Reno PD	134	9	1090	104	99	8	809	73
Sparks PD	44	10	309	77	31	6	228	78
Storey SO	0	0	2	0	0	0	5	3
TMCC PD	0	0	0	0	0	0	1	0
UNLV PD	2	0	61	5	15	1	37	2
UNR PD	1	0	5	0	1	0	4	0
Washoe SO	21	5	138	22	11	2	132	20
Washoe Co Schl PD	1	1	6	3	0	0	0	0
Wendover PD	1	1	10	8	0	0	12	5
White Pine SO	3	1	18	5	0	0	4	0
Winnemucca PD	2	0	13	4	1	1	20	5
Yerington PD	0	0	0	0	0	0	3	1
TOTALS	1680	204	14929	1836	1610	230	12648	1893

Nevada--Arson--Incidence Level Variation--UCR

SEPTEMBER 2003

Agency	SEPTEMBER 2003	SEPTEMBER 2003	YTD 2003	YTD 2003	SEPTEMBER 2002	SEPTEMBER 2002	YTD 2002	YTD 2002
	Offenses	R Cleared	Offenses	Cleared	Offenses	R Cleared	Offenses	Cleared
Boulder	0	0	2	1	0	0	3	1
Carlin PD	0	0	0	0	0	0	0	0
Carson SO	2	0	14	1	1	0	10	2
Churchill SO	0	0	1	1	1	0	2	1
Clark Co Schl PD	3	1	55	16	1	0	43	16
Douglas SO	2	2	3	2	1	0	4	3
Elko PD	0	0	1	1	1	0	8	2
Elko SO	0	0	2	1	0	0	1	0
Esmeralda SO	0	0	0	0	0	0	0	0
Eureka SO	0	0	0	0	0	0	1	0
Fallon PD	0	0	0	0	0	0	0	0
Henderson PD	0	0	36	4	4	1	33	7
Humboldt SO	0	0	0	0	0	0	0	0
Lander SO	0	0	0	0	0	0	0	0
Lincoln SO	0	0	0	0	0	0	0	0
Lovelock PD	0	0	0	0	0	0	0	0
LV Fire Dept	4	0	67	7	8	0	115	9
LV Metro	31	0	146	3	12	0	122	0
Lyon SO	0	0	8	4	0	0	2	1
Mesquite PD	0	0	0	0	0	0	0	0
Mineral SO	0	0	0	0	0	0	2	1
NLVPD	5	0	39	6	7	0	47	5
Nye SO	0	0	9	0	2	0	9	4
Pershing SO	0	0	0	0	0	0	0	0
Reno PD	5	0	35	5	12	1	41	8
Sparks PD	0	0	0	0	0	0	0	0
Storey SO	0	0	2	2	0	0	0	0
TMCC PD	0	0	0	0	0	0	0	0
UNLV PD	0	0	1	1	0	0	2	0
UNR PD	0	0	1	0	0	0	1	1
Washoe SO	0	0	5	1	1	0	4	2
Washoe CO Sci PD	2	0	14	3	1	0	3	2
Wendover PD	0	0	0	0	0	0	2	0
White Pine SO	0	0	1	0	1	0	2	1
Winnemucca PD	1	0	2	0	1	1	2	2
Yerington PD	0	0	0	0	0	0	0	0
TOTALS	55	3	444	59	54	3	459	68

Nevada--Hate Crimes--UCR

Sep-03

AGENCY	OFFENSE	LOCATION	BIAS	VICTIM TYPE / NUMBER	OFFENDER RACE / NUMBER
Las Vegas Metro PD	Simple Assault	Residence/Home	Anti-Male Homosexual	Individual- 1	White- 2
Las Vegas Metro PD	Destruction/Damage/Vandalism	Residence/Home	Anti- Black	Individual- 2	Unknown-00
Las Vegas Metro PD	Aggravated Assault	Parking Lot/Garage	Anti-Black	Individual-1	White- 5
Las Vegas Metro PD	Aggravated Assault	Parking Lot/Garage	Anti-Black	Individual- 1	White- 1
Washoe Co Schl PD	Destruction/Damage/Vandalism	School/College	Anti-Black	Social/Public	White-00
Washoe Co Schl PD	Simple Assault	Other/Unknown	Anti-Black	Individual-1	White-4

Stolen/Recovered Property Report

SEPTEMBER 2003

Property Type	Boulder PD	Carlin PD	Carson SO	Churchill SO	Clark Co SchI PD	Douglas SO	Elko PD	Elko SO	Esmeralda SO
Currency									
Stolen	\$0	\$0	\$8,378	\$2,251	\$3,353	\$11,955	\$6,055	\$190	\$0
Recovered	\$0	\$0	\$0	\$900	\$0	\$1,295	\$3	\$0	\$0
% Recovered	0.0%	0.0%	0.0%	40.0%	0.0%	10.8%	0.0%	0.0%	0.0%
Jewelry									
Stolen	\$0	\$0	\$2,180	\$2,100	\$0	\$735	\$7,956	\$0	\$0
Recovered	\$0	\$0	\$0	\$1,300	\$0	\$685	\$0	\$0	\$0
% Recovered	0.0%	0.0%	0.0%	61.9%	0.0%	93.2%	0.0%	0.0%	0.0%
Clothing									
Stolen	\$0	\$0	\$890	\$0	\$300	\$85	\$640	\$0	\$0
Recovered	\$0	\$0	\$0	\$0	\$15	\$0	\$10	\$0	\$0
% Recovered	0.0%	0.0%	0.0%	0.0%	5.0%	0.0%	1.6%	0.0%	0.0%
Motor Vehicle									
Stolen	\$11,000	\$0	\$93,200	\$20,000	\$8,500	\$10,600	\$27,200	\$42,500	\$0
Recovered	\$10,000	\$0	\$54,300	\$31,000	\$10,500	\$0	\$19,000	\$12,500	\$0
% Recovered	90.9%	0.0%	58.3%	155.0%	123.5%	0.0%	69.9%	29.4%	0.0%
Office Equipment									
Stolen	\$800	\$0	\$6,714	\$0	\$7,295	\$0	\$1,889	\$275	\$0
Recovered	\$0	\$0	\$0	\$0	\$1,500	\$0	\$0	\$0	\$0
% Recovered	0.0%	0.0%	0.0%	0.0%	20.6%	0.0%	0.0%	0.0%	0.0%
TV, VCR, Camera, Etc.									
Stolen	\$0	\$2,765	\$17,297	\$0	\$11,174	\$570	\$3,131	\$1,550	\$0
Recovered	\$0	\$0	\$0	\$0	\$0	\$0	\$857	\$0	\$0
% Recovered	0.0%	0.0%	0.0%	0.0%	0.0%	0.0%	27.4%	0.0%	0.0%
Firearm									
Stolen	\$1,075	\$0	\$2,500	\$3,064	\$0	\$900	\$800	\$1,750	\$0
Recovered	\$0	\$0	\$0	\$400	\$0	\$0	\$500	\$0	\$0
% Recovered	0.0%	0.0%	0.0%	13.1%	0.0%	0.0%	62.5%	0.0%	0.0%
Household Goods									
Stolen	\$0	\$50	\$0	\$1,721	\$0	\$0	\$25	\$360	\$0
Recovered	\$0	\$50	\$0	\$0	\$0	\$0	\$0	\$0	\$0
% Recovered	0.0%	100.0%	0.0%	0.0%	0.0%	0.0%	0.0%	0.0%	0.0%
Consumable Goods									
Stolen	\$0	\$52	\$648	\$8	\$60	\$107	\$1,118	\$73	\$0
Recovered	\$0	\$15	\$12	\$0	\$0	\$44	\$10	\$63	\$0
% Recovered	0.0%	28.8%	1.9%	0.0%	0.0%	41.1%	0.9%	86.3%	0.0%
Livestock									
Stolen	\$0	\$0	\$0	\$0	\$0	\$0	\$0	\$40,000	\$0
Recovered	\$0	\$0	\$0	\$0	\$0	\$0	\$0	\$0	\$0
% Recovered	0.0%	0.0%	0.0%	0.0%	0.0%	0.0%	0.0%	0.0%	0.0%
Misc.									
Stolen	\$11,503	\$725	\$55,814	\$7,948	\$40,407	\$14,508	\$15,951	\$5,431	\$0
Recovered	\$9,265	\$0	\$887	\$915	\$290	\$481	\$1,064	\$503	\$0
% Recovered	80.5%	0.0%	1.6%	11.5%	0.7%	3.3%	6.7%	9.3%	0.0%
TOTALS									
Stolen	\$24,378	\$3,592	\$187,621	\$37,092	\$71,089	\$39,460	\$64,765	\$92,129	\$0
Recovered	\$19,265	\$65	\$55,199	\$34,515	\$12,305	\$2,505	\$21,444	\$13,066	\$0
% Recovered	79.0%	1.8%	29.4%	93.1%	17.3%	6.3%	33.1%	14.2%	0.0%

Stolen/Recovered Property Report

SEPTEMBER 2003

Property Type	Eureka SO	Fallon PD	Henderson PD	Humboldt SO	Lander SO	Las Vegas Metro	Lincoln SO	Lovelock PD	Lyon SO
Currency									
Stolen	\$0	\$278	\$0	\$600	\$0	\$1,544,957	\$5,580	\$0	\$2,182
Recovered	\$0	\$0	\$0	\$0	\$0	\$5,432	\$2,171	\$0	\$10
% Recovered	0.0%	0.0%	0.0%	0.0%	0.0%	0.4%	38.9%	0.0%	0.5%
Jewelry									
Stolen	\$0	\$0	\$0	\$0	\$0	\$3,541,315	\$45	\$0	\$17,772
Recovered	\$0	\$0	\$0	\$0	\$0	\$21,195	\$0	\$0	\$2,305
% Recovered	0.0%	0.0%	0.0%	0.0%	0.0%	0.6%	0.0%	0.0%	13.0%
Clothing									
Stolen	\$0	\$0	\$0	\$0	\$0	\$372,199	\$60	\$0	\$295
Recovered	\$0	\$0	\$0	\$0	\$0	\$22,519	\$60	\$0	\$0
% Recovered	0.0%	0.0%	0.0%	0.0%	0.0%	6.1%	100.0%	0.0%	0.0%
Motor Vehicle									
Stolen	\$0	\$3,000	\$0	\$0	\$0	\$5,746,995	\$6,000	\$0	\$24,500
Recovered	\$0	\$1,000	\$0	\$0	\$0	\$1,916,047	\$0	\$0	\$8,000
% Recovered	0.0%	33.3%	0.0%	0.0%	0.0%	33.3%	0.0%	0.0%	32.7%
Office Equipment									
Stolen	\$0	\$362	\$0	\$0	\$0	\$584,269	\$0	\$0	\$0
Recovered	\$0	\$0	\$0	\$0	\$0	\$10,515	\$0	\$0	\$0
% Recovered	0.0%	0.0%	0.0%	0.0%	0.0%	1.8%	0.0%	0.0%	0.0%
TV, VCR, Camera, Etc.									
Stolen	\$0	\$325	\$0	\$0	\$0	\$729,931	\$9,336	\$0	\$5,680
Recovered	\$0	\$0	\$0	\$0	\$0	\$7,174	\$3,947	\$0	\$0
% Recovered	0.0%	0.0%	0.0%	0.0%	0.0%	1.0%	42.3%	0.0%	0.0%
Firearm									
Stolen	\$0	\$0	\$0	\$0	\$0	\$47,333	\$0	\$0	\$300
Recovered	\$0	\$0	\$0	\$0	\$0	\$1,150	\$0	\$0	\$0
% Recovered	0.0%	0.0%	0.0%	0.0%	0.0%	2.4%	0.0%	0.0%	0.0%
Household Goods									
Stolen	\$0	\$0	\$0	\$0	\$0	\$221,581	\$2	\$0	\$1,886
Recovered	\$0	\$0	\$0	\$0	\$0	\$890	\$2	\$0	\$0
% Recovered	0.0%	0.0%	0.0%	0.0%	0.0%	0.4%	100.0%	0.0%	0.0%
Consumable Goods									
Stolen	\$0	\$13	\$0	\$0	\$0	\$44,143	\$0	\$11	\$1,393
Recovered	\$0	\$0	\$0	\$0	\$0	\$5,517	\$0	\$0	\$345
% Recovered	0.0%	0.0%	0.0%	0.0%	0.0%	12.5%	0.0%	0.0%	24.8%
Livestock									
Stolen	\$0	\$0	\$0	\$0	\$0	\$1,414	\$0	\$550	\$0
Recovered	\$0	\$0	\$0	\$0	\$0	\$0	\$0	\$0	\$0
% Recovered	0.0%	0.0%	0.0%	0.0%	0.0%	0.0%	0.0%	0.0%	0.0%
Misc.									
Stolen	\$26,197	\$4,773	\$0	\$72,060	\$0	\$3,670,882	\$4,759	\$75	\$119,169
Recovered	\$0	\$86	\$0	\$5,400	\$0	\$89,170	\$2,943	\$0	\$84,584
% Recovered	0.0%	1.8%	0.0%	7.5%	0.0%	2.4%	61.8%	0.0%	71.0%
TOTALS									
Stolen	\$26,197	\$8,751	\$0	\$72,660	\$0	\$16,505,019	\$25,782	\$636	\$173,178
Recovered	\$0	\$1,086	\$0	\$5,400	\$0	\$2,079,609	\$9,123	\$0	\$95,244
% Recovered	0.0%	12.4%	0.0%	7.4%	0.0%	12.6%	35.4%	0.0%	55.0%

Stolen/Recovered Property Report

SEPTEMBER 2003

Property Type	Mesquite PD	Mineral SO	NLVPD	Nye SO	Pershing SO	Reno PD	Sparks PD	Storey SO	TMCC PD	UNLV PD
Currency										
Stolen	\$205	\$0	\$62,849	\$0	\$23	\$37,180	\$26,595	\$5,900	\$0	\$152
Recovered	\$0	\$0	\$39	\$0	\$0	\$1,325	\$99	\$0	\$0	\$0
% Recovered	0.0%	0.0%	0.1%	0.0%	0.0%	3.6%	0.4%	0.0%	0.0%	0.0%
Jewelry										
Stolen	\$0	\$0	\$66,353	\$0	\$0	\$102,813	\$54,357	\$15,000	\$0	\$0
Recovered	\$0	\$0	\$393	\$0	\$0	\$3,000	\$2,518	\$0	\$0	\$0
% Recovered	0.0%	0.0%	0.6%	0.0%	0.0%	2.9%	4.6%	0.0%	0.0%	0.0%
Clothing										
Stolen	\$10	\$0	\$18,348	\$0	\$0	\$10,776	\$548	\$0	\$0	\$30
Recovered	\$10	\$0	\$1,547	\$0	\$0	\$953	\$321	\$0	\$0	\$0
% Recovered	100.0%	0.0%	8.4%	0.0%	0.0%	8.8%	58.6%	0.0%	0.0%	0.0%
Motor Vehicle										
Stolen	\$3,800	\$0	\$1,358,885	\$0	\$0	\$954,219	\$537,200	\$0	\$0	\$4,700
Recovered	\$5,250	\$0	\$899,110	\$0	\$0	\$475,328	\$473,950	\$0	\$0	\$0
% Recovered	138.2%	0.0%	66.2%	0.0%	0.0%	49.8%	88.2%	0.0%	0.0%	0.0%
Office Equipment										
Stolen	\$0	\$0	\$4,299	\$0	\$0	\$20,115	\$14,460	\$0	\$0	\$0
Recovered	\$0	\$0	\$0	\$0	\$0	\$150	\$4,397	\$0	\$0	\$0
% Recovered	0.0%	0.0%	0.0%	0.0%	0.0%	0.7%	30.4%	0.0%	0.0%	0.0%
TV, VCR, Camera, Etc.										
Stolen	\$0	\$0	\$303,424	\$0	\$0	\$74,704	\$33,481	\$0	\$0	\$17,833
Recovered	\$0	\$0	\$2,314	\$0	\$0	\$847	\$734	\$0	\$0	\$0
% Recovered	0.0%	0.0%	0.8%	0.0%	0.0%	1.1%	2.2%	0.0%	0.0%	0.0%
Firearm										
Stolen	\$0	\$0	\$6,960	\$0	\$0	\$23,397	\$10,590	\$300	\$0	\$0
Recovered	\$0	\$0	\$0	\$0	\$450	\$187	\$550	\$0	\$0	\$0
% Recovered	0.0%	0.0%	0.0%	0.0%	0.0%	0.8%	5.2%	0.0%	0.0%	0.0%
Household Goods										
Stolen	\$0	\$0	\$22,012	\$0	\$0	\$5,096	\$42,309	\$0	\$0	\$0
Recovered	\$0	\$0	\$468	\$0	\$0	\$145	\$200	\$0	\$0	\$0
% Recovered	0.0%	0.0%	2.1%	0.0%	0.0%	2.8%	0.5%	0.0%	0.0%	0.0%
Consumable Goods										
Stolen	\$63	\$0	\$12,140	\$0	\$0	\$4,211	\$1,762	\$0	\$0	\$0
Recovered	\$63	\$0	\$442	\$0	\$0	\$198	\$265	\$0	\$0	\$0
% Recovered	100.0%	0.0%	3.6%	0.0%	0.0%	4.7%	15.0%	0.0%	0.0%	0.0%
Livestock										
Stolen	\$0	\$0	\$0	\$0	\$0	\$0	\$0	\$0	\$0	\$0
Recovered	\$0	\$0	\$0	\$0	\$0	\$0	\$0	\$0	\$0	\$0
% Recovered	0.0%	0.0%	0.0%	0.0%	0.0%	0.0%	0.0%	0.0%	0.0%	0.0%
Misc.										
Stolen	\$4,037	\$0	\$253,463	\$0	\$46,452	\$234,299	\$160,467	\$28	\$1,297	\$5,168
Recovered	\$127	\$0	\$602	\$0	\$19,777	\$4,250	\$123,816	\$0	\$0	\$0
% Recovered	3.1%	0.0%	0.2%	0.0%	42.6%	1.8%	77.2%	0.0%	0.0%	0.0%
TOTALS										
Stolen	\$8,115	\$0	\$2,108,733	\$0	\$46,475	\$1,466,810	\$881,769	\$21,228	\$1,297	\$27,883
Recovered	\$5,450	\$0	\$904,915	\$0	\$20,227	\$486,383	\$606,850	\$0	\$0	\$0
% Recovered	67.2%	0.0%	42.9%	0.0%	43.5%	33.2%	68.8%	0.0%	0.0%	0.0%

Stolen/Recovered Property Report

SEPTEMBER 2003

Property Type	UNR PD	Washoe SO	Washoe Co Schl PD	Wendover PD	White Pine SO	Winnemucca PD	Yerington PD	Total By Property
Currency								
Stolen	\$307	\$4,200	\$565	\$80	\$68	\$1,400	\$0	\$1,725,303
Recovered	\$0	\$0	\$25	\$0	\$0	\$0	\$0	\$11,299
% Recovered	0.0%	0.0%	4.4%	0.0%	0.0%	0.0%	0.0%	0.7%
Jewelry								
Stolen	\$0	\$34,868	\$10	\$0	\$3,120	\$0	\$0	\$3,848,624
Recovered	\$0	\$10,100	\$0	\$0	\$80	\$0	\$0	\$41,576
% Recovered	0.0%	29.0%	0.0%	0.0%	2.6%	0.0%	0.0%	1.1%
Clothing								
Stolen	\$0	\$938	\$513	\$500	\$0	\$0	\$0	\$406,132
Recovered	\$0	\$0	\$0	\$0	\$0	\$0	\$0	\$25,435
% Recovered	0.0%	0.0%	0.0%	0.0%	0.0%	0.0%	0.0%	6.3%
Motor Vehicle								
Stolen	\$14,600	\$77,470	\$1,500	\$20,000	\$28,500	\$11,000	\$0	\$9,005,369
Recovered	\$1,000	\$25,020	\$1,500	\$20,000	\$27,500	\$11,000	\$0	\$4,002,005
% Recovered	6.8%	32.3%	100.0%	100.0%	96.5%	100.0%	0.0%	44.4%
Office Equipment								
Stolen	\$2,550	\$11,031	\$5,011	\$0	\$0	\$0	\$0	\$659,070
Recovered	\$0	\$0	\$259	\$0	\$0	\$0	\$0	\$16,821
% Recovered	0.0%	0.0%	5.2%	0.0%	0.0%	0.0%	0.0%	2.6%
TV, VCR, Camera, Etc.								
Stolen	\$0	\$8,845	\$3,165	\$1,079	\$1,550	\$1,400	\$0	\$1,227,240
Recovered	\$0	\$20	\$0	\$0	\$0	\$350	\$0	\$16,243
% Recovered	0.0%	0.2%	0.0%	0.0%	0.0%	25.0%	0.0%	1.3%
Firearm								
Stolen	\$0	\$2,820	\$0	\$0	\$0	\$0	\$500	\$102,289
Recovered	\$0	\$0	\$0	\$0	\$0	\$0	\$0	\$3,237
% Recovered	0.0%	0.0%	0.0%	0.0%	0.0%	0.0%	0.0%	3.2%
Household Goods								
Stolen	\$0	\$1,976	\$0	\$0	\$0	\$0	\$0	\$297,018
Recovered	\$0	\$150	\$0	\$0	\$0	\$0	\$0	\$1,905
% Recovered	0.0%	7.6%	0.0%	0.0%	0.0%	0.0%	0.0%	0.6%
Consumable Goods								
Stolen	\$19	\$218	\$0	\$10	\$138	\$847	\$0	\$67,034
Recovered	\$0	\$4	\$0	\$10	\$0	\$0	\$0	\$6,988
% Recovered	0.0%	1.8%	0.0%	100.0%	0.0%	0.0%	0.0%	10.4%
Livestock								
Stolen	\$0	\$0	\$0	\$0	\$1,200	\$0	\$0	\$43,164
Recovered	\$0	\$0	\$0	\$0	\$1,200	\$0	\$0	\$1,200
% Recovered	0.0%	0.0%	0.0%	0.0%	100.0%	0.0%	0.0%	2.8%
Misc.								
Stolen	\$7,459	\$50,227	\$7,123	\$15	\$303	\$10,854	\$635	\$4,832,030
Recovered	\$898	\$389	\$901	\$0	\$100	\$22,004	\$0	\$368,452
% Recovered	12.0%	0.8%	12.6%	0.0%	33.0%	202.7%	0.0%	7.6%
TOTALS								
Stolen	\$24,936	\$192,593	\$17,887	\$21,684	\$34,879	\$25,501	\$1,135	\$22,213,274
Recovered	\$1,898	\$35,683	\$2,685	\$20,010	\$28,880	\$33,354	\$0	\$4,495,161
% Recovered	7.6%	18.5%	15.0%	92.3%	82.8%	130.8%	0.0%	20.2%

Nevada--Assaults on Officers by Agency--UCR

SEPTEMBER 2003

Agency	SEPTEMBER 2003 Offenses	SEPTEMBER 2003 Cleared	2003 YTD Offenses	2003 YTD Cleared	SEPTEMBER 2002 Offenses	SEPTEMBER 2002 Cleared	2002 YTD Offenses	2002 YTD Cleared
Boulder	0	0	0	0	0	0	0	0
Carlin PD	0	0	0	0	0	0	3	3
Carson SO	0	0	9	9	0	0	9	8
Churchill SO	2	2	7	7	1	1	3	3
CirkSchIDst PD	0	0	0	0	0	0	0	0
Douglas SO	0	0	7	7	0	0	5	5
Elko PD	2	1	7	6	0	0	3	3
Elko SO	0	0	0	0	0	0	0	0
Esmeralda SO	0	0	0	0	0	0	0	0
Eureka SO	0	0	0	0	0	0	0	0
Fallon PD	0	0	0	0	0	0	0	0
Henderson PD	0	0	9	9	1	1	23	23
Highway Patrol	1	1	20	18	1	1	18	18
Humboldt SO	0	0	3	3	0	0	3	3
Lander SO	0	0	0	0	0	0	0	0
Lincoln SO	0	0	0	0	0	0	0	0
Lovelock PD	0	0	0	0	0	0	0	0
LV Fire Dept	0	0	0	0	0	0	0	0
LV Metro	25	25	242	242	41	41	223	223
Lyon SO	0	0	4	4	0	0	4	4
Mesquite PD	0	0	0	0	0	0	0	0
Mineral SO	0	0	0	0	0	0	3	3
NV Div Investigations	0	0	0	0	0	0	0	0
NLVPD	6	6	53	50	6	6	59	59
Nye SO	0	0	6	6	3	3	12	12
Pershing SO	0	0	0	0	0	0	0	0
Reno PD	2	2	13	12	2	2	3	3
Sparks PD	2	2	10	10	0	0	3	3
Storey SO	0	0	0	0	0	0	0	0
TMCC PD	0	0	0	0	0	0	0	0
UNLV PD	3	3	7	7	0	0	1	1
UNR PD	0	0	0	0	0	0	0	0
Washoe SO	0	0	2	2	1	1	14	12
Washoe Co Schl PD	0	0	0	0	0	0	3	3
Wendover PD	2	2	3	3	0	0	1	1
White Pine SO	0	0	0	0	1	1	1	1
Winnemucca PD	0	0	1	1	0	0	3	3
Yerington PD	0	0	0	0	0	0	0	0
TOTALS	45	44	403	396	57	57	397	394

Nevada -- Assaults by Agency/Weapon/Assignment -- UCR

SEPTEMBER 2003

Table 16

Agency	Total Assaults	Number Cleared	Firearm	Knife / Cutting Device	Other Danger. Weapon	Hands, Fists, Feet, Etc.	2-Officer Vehicle	1-Officer Vehicle- Alone	1-Officer Vehicle- Assisted	Det./Spec. Assign. - Alone	Det./Spec. Assign. - Assisted	Other- Alone	Other- Assisted
Boulder City PD	0	0	0	0	0	0	0	0	0	0	0	0	0
Carlin PD	0	0	0	0	0	0	0	0	0	0	0	0	0
Carson City SO	0	0	0	0	0	0	0	0	0	0	0	0	0
Churchill Co SO	2	2	0	0	0	2	0	0	2	0	0	0	0
Clark School Dist PD	0	0	0	0	0	0	0	0	0	0	0	0	0
Douglas Co SO	0	0	0	0	0	0	0	0	0	0	0	0	0
Elko PD	2	1	0	0	0	2	0	0	1	0	0	0	0
Elko Co SO	0	0	0	0	0	0	0	0	0	0	0	0	0
Esmeralda Co SO	0	0	0	0	0	0	0	0	0	0	0	0	0
Eureka Co SO	0	0	0	0	0	0	0	0	0	0	0	0	0
Fallon PD	0	0	0	0	0	0	0	0	0	0	0	0	0
Henderson PD	0	0	0	0	0	0	0	0	0	0	0	0	0
NV Highway Patrol	1	1	0	0	0	1	0	1	0	0	0	0	0
Humboldt Co SO	0	0	0	0	0	0	0	0	0	0	0	0	0
Lander Co SO	0	0	0	0	0	0	0	0	0	0	0	0	0
Lincoln Co SO	0	0	0	0	0	0	0	0	0	0	0	0	0
Lovelock PD	0	0	0	0	0	0	0	0	0	0	0	0	0
Las Vegas Fire Dept	0	0	0	0	0	0	0	0	0	0	0	0	0
Las Vegas Metro PD	25	25	3	1	5	16	5	7	6	0	1	2	4
Lyon Co SO	0	0	0	0	0	0	0	0	0	0	0	0	0
Mesquite PD	0	0	0	0	0	0	0	0	0	0	0	0	0
Mineral Co SO	0	0	0	0	0	0	0	0	0	0	0	0	0
NV Div of Investigations	0	0	0	0	0	0	0	0	0	0	0	0	0
North Las Vegas PD	6	6	0	1	1	4	4	0	1	0	0	0	1
Nye Co SO	0	0	0	0	0	0	0	0	0	0	0	0	0
Pershing Co SO	0	0	0	0	0	0	0	0	0	0	0	0	0
Reno PD	2	2	0	0	0	2	0	0	2	0	0	0	0
Sparks PD	2	2	0	1	0	1	0	0	2	0	0	0	0
Storey Co SO	0	0	0	0	0	0	0	0	0	0	0	0	0
TMCC PD	0	0	0	0	0	0	0	0	0	0	0	0	0
UNLV PD	3	3	0	0	0	3	0	0	0	0	0	2	1
UNR PD	0	0	0	0	0	0	0	0	0	0	0	0	0
Washoe Co SO	0	0	0	0	0	0	0	0	0	0	0	0	0
Washoe Co School PD	0	0	0	0	0	0	0	0	0	0	0	0	0
West Wendover PD	2	2	0	0	2	0	0	0	2	0	0	0	0
White Pine Co SO	0	0	0	0	0	0	0	0	0	0	0	0	0
Winnemucca PD	0	0	0	0	0	0	0	0	0	0	0	0	0
Yerington PD	0	0	0	0	0	0	0	0	0	0	0	0	0
TOTALS	45	44	3	3	8	31	9	8	16	0	1	4	6

28

Nevada -- Officer Assaults by Activity/Weapon/Assignment -- UCR

SEPTEMBER 2003

Table 17

ACTIVITY TYPE	Total Assaults	Number Cleared	Firearm	Knife / Cutting Device	Other Danger. Weapon	Hands, Fists, Feet, Etc.	2-Officer Vehicle	1-Officer Vehicle- Alone	1-Officer Vehicle- Assisted	Det./Spec. Assign.- Alone	Det./Spec. Assign.- Assisted	Other- Alone	Other- Assisted
DOMESTIC / OTHER DISTURBANCE	15	14	0	2	3	10	5	2	3	0	1	3	0
BURGLARY IN PROGRESS	0	0	0	0	0	0	0	0	0	0	0	0	0
ROBBERY IN PROGRESS	0	0	0	0	0	0	0	0	0	0	0	0	0
ATTEMPTING OTHER ARREST	3	3	0	1	1	1	0	1	1	0	0	0	1
CIVIL DISORDER	0	0	0	0	0	0	0	0	0	0	0	0	0
HANDLING PRISONER	10	10	3	0	1	6	0	1	7	0	0	0	2
INVEST. SUSP. PERSONS / CIRCUM.	7	7	0	0	0	7	1	0	4	0	0	0	2
AMBUSH-NO WARNING	1	1	0	0	1	0	0	1	0	0	0	0	0
MENTALLY DERANGED	0	0	0	0	0	0	0	0	0	0	0	0	0
TRAFFIC PURSUITS / STOPS	5	5	0	0	1	4	1	3	0	0	0	1	0
ALL OTHER	4	4	0	0	1	3	2	0	1	0	0	0	1
TOTALS	45	44	3	3	8	31	9	8	16	0	1	4	6

29

Nevada--Assaults with Injury/without Injury--UCR

SEPTEMBER 2003

Agency	Total Assaults by weapon		Firearm		Cutting Instruments		Other Dangerous weapons		Hands, Fists, Feet, Etc.		
	With personal injury	Without personal injury	With personal injury	Without personal injury	With personal injury	Without personal injury	With personal injury	Without personal injury	With personal injury	Without personal injury	
Boulder City PD	0	0	0	0	0	0	0	0	0	0	
Carlin PD	0	0	0	0	0	0	0	0	0	0	
Carson City SO	0	0	0	0	0	0	0	0	0	0	
Churchill Co SO	2	0	2	0	0	0	0	0	0	2	
Clark Co Schl Dist PD	0	0	0	0	0	0	0	0	0	0	
Douglas Co SO	0	0	0	0	0	0	0	0	0	0	
Elko Co SO	0	0	0	0	0	0	0	0	0	0	
Elko PD	2	0	2	0	0	0	0	0	0	2	
Esmeralda Co SO	0	0	0	0	0	0	0	0	0	0	
Eureka Co SO	0	0	0	0	0	0	0	0	0	0	
Fallon PD	0	0	0	0	0	0	0	0	0	0	
Henderson PD	0	0	0	0	0	0	0	0	0	0	
NV Highway Patrol	0	0	0	0	0	0	0	0	0	0	
Humboldt Co SO	0	0	0	0	0	0	0	0	0	0	
Lander Co SO	0	0	0	0	0	0	0	0	0	0	
Las Vegas Metro PD	25	6	19	1	2	0	1	2	3	3	13
Lincoln Co SO	0	0	0	0	0	0	0	0	0	0	
Lovelock PD	0	0	0	0	0	0	0	0	0	0	
Lyon Co SO	0	0	0	0	0	0	0	0	0	0	
Mesquite PD	0	0	0	0	0	0	0	0	0	0	
Mineral Co SO	0	0	0	0	0	0	0	0	0	0	
NV Div Investigations	0	0	0	0	0	0	0	0	0	0	
North Las Vegas PD	6	1	5	0	0	0	1	1	0	0	4
Nye Co SO	0	0	0	0	0	0	0	0	0	0	0
Pershing Co SO	0	0	0	0	0	0	0	0	0	0	0
Reno PD	2	1	1	0	0	0	0	0	0	1	1
Sparks PD	2	1	1	0	0	0	0	0	0	1	1
Storey Co SO	0	0	0	0	0	0	0	0	0	0	0
TMCC PD	0	0	0	0	0	0	0	0	0	0	0
UNLV PD	3	0	3	0	0	0	0	0	0	0	3
UNR PD	0	0	0	0	0	0	0	0	0	0	0
Washoe Co SO	0	0	0	0	0	0	0	0	0	0	0
Washoe Co School Dist.	0	0	0	0	0	0	0	0	0	0	0
West Wendover PD	2	0	2	0	0	0	0	0	2	0	0
White Pine Co SO	0	0	0	0	0	0	0	0	0	0	0
Winnemucca PD	0	0	0	0	0	0	0	0	0	0	0
Yerington PD	0	0	0	0	0	0	0	0	0	0	0
Totals	44	9	35	1	2	0	2	3	5	5	26

Nevada--Time of Assaults on Officers--UCR

SEPTEMBER 2003

Agency	2:00 AM	4:00 AM	6:00 AM	8:00 AM	10:00 AM	12:00 AM	12:01- 2:00 PM	2:00- 4:00 PM	4:00- 6:00 PM	6:00- 8:00 PM	10:00 PM	10:00- 12:00 PM
Boulder City PD	0	0	0	0	0	0	0	0	0	0	0	0
Carlin PD	0	0	0	0	0	0	0	0	0	0	0	0
Carson City SO	0	0	0	0	0	0	0	0	0	0	0	0
Churchill Co SO	0	0	0	0	0	0	0	0	0	0	0	2
Clark Co Schl Dist PD	0	0	0	0	0	0	0	0	0	0	0	0
Douglas Co SO	0	0	0	0	0	0	0	0	0	0	0	0
Elko Co SO	0	0	0	0	0	0	0	0	0	0	0	0
Elko PD	0	0	0	0	0	0	0	0	0	0	2	0
Esmeralda Co SO	0	0	0	0	0	0	0	0	0	0	0	0
Eureka Co SO	0	0	0	0	0	0	0	0	0	0	0	0
Fallon PD	0	0	0	0	0	0	0	0	0	0	0	0
Henderson PD	0	0	0	0	0	0	0	0	0	0	0	0
Highway Patrol	0	0	0	1	0	0	0	0	0	0	0	0
Humbolt Co SO	0	0	0	0	0	0	0	0	0	0	0	0
Lander Co SO	0	0	0	0	0	0	0	0	0	0	0	0
Las Vegas Metro PD	3	0	0	5	1	0	4	1	4	3	2	2
Lincoln Co SO	0	0	0	0	0	0	0	0	0	0	0	0
Lovelock PD	0	0	0	0	0	0	0	0	0	0	0	0
Lyon Co SO	0	0	0	0	0	0	0	0	0	0	0	0
Mesquite PD	0	0	0	0	0	0	0	0	0	0	0	0
Mineral Co SO	0	0	0	0	0	0	0	0	0	0	0	0
NV Div Investigations	0	0	0	0	0	0	0	0	0	0	0	0
North LV PD	1	0	0	1	1	0	0	0	0	0	0	3
Nye Co SO	0	0	0	0	0	0	0	0	0	0	0	0
Pershing Co SO	0	0	0	0	0	0	0	0	0	0	0	0
Reno PD	0	2	0	0	0	0	0	0	0	0	0	0
Sparks PD	0	0	0	0	0	0	0	1	0	1	0	0
Storey Co SO	0	0	0	0	0	0	0	0	0	0	0	0
TMCC PD	0	0	0	0	0	0	0	0	0	0	0	0
UNLV PD	0	0	1	0	0	0	0	0	0	0	2	0
UNR PD	0	0	0	0	0	0	0	0	0	0	0	0
Washoe Co SO	0	0	0	0	0	0	0	0	0	0	0	0
Washoe Co Schl PD	0	0	0	0	0	0	0	0	0	0	0	0
West Wendover PD	0	0	0	0	0	0	0	0	0	2	0	0
White Pine Co SO	0	0	0	0	0	0	0	0	0	0	0	0
Winnemucca PD	0	0	0	0	0	0	0	0	0	0	0	0
Yerington PD	0	0	0	0	0	0	0	0	0	0	0	0
Totals	4	2	1	7	2	0	4	2	4	6	6	7

Nevada -- Highway Patrol DUI Arrests -- UCR

Sept 2003

		10- 13-										25- 30- 35- 40- 45- 50- 55- 60-							Age		Total				
		<10	12	14	15	16	17	18	19	20	21	22	23	24	29	34	39	44	49	54		59	64	>64	Unknown
Carson City	M																								0
	F																								
Churchill	M																								0
	F																								0
Clark	M																								0
	F																								0
Douglas	M																								0
	F																								0
Elko	M																								0
	F																								0
Esmeralda	M																								0
	F																								0
Eureka	M																								0
	F																								0
Humboldt	M																								0
	F																								0
Lander	M																								0
	F																								0
Lincoln	M																								0
	F																								0
Lyon	M																								0
	F																								0
Mineral	M																								0
	F																								0
Nye	M																								0
	F																								0
Pershing	M																								0
	F																								0
Storey	M																								0
	F																								0
Washoe	M																								0
	F																								0
White Pine	M																								0
	F																								0
Unknown	M																								0
	F																								0
County*	M																								0
	F																								0
Total		0	0	0	0	0	0	0	0	0	0	0	0	0	0	0	0	0	0	0	0	0	0	0	0

*Due to error in reporting

Nevada -- Highway Patrol Drug Arrests -- UCR

Sept 2003

		10- 13-										25- 30- 35- 40- 45- 50- 55- 60-										Age		Total	
		<10	12	14	15	16	17	18	19	20	21	22	23	24	29	34	39	44	49	54	59	64	>64		Unknown
Carson City	M																								0
	F																								
Churchill	M																								0
	F																								0
Clark	M																								0
	F																								0
Douglas	M																								0
	F																								0
Elko	M																								0
	F																								0
Esmeralda	M																								0
	F																								0
Eureka	M																								0
	F																								0
Humboldt	M																								0
	F																								0
Lander	M																								0
	F																								0
Lincoln	M																								0
	F																								0
Lyon	M																								0
	F																								0
Mineral	M																								0
	F																								0
Nye	M																								0
	F																								0
Pershing	M																								0
	F																								0
Storey	M																								0
	F																								0
Washoe	M																								0
	F																								0
White Pine	M																								0
	F																								0
Unknown County*	M																								0
	F																								0
Total		0	0	0	0	0	0	0	0	0	0	0	0	0	0	0	0	0	0	0	0	0	0	0	0

Nevada UCR
*Footnotes / Exceptions

SEPTEMBER 2003

Table 1

--Nevada figures are annualized projections.

--"Assault" does not include simple assaults to allow direct comparison between the Nevada rate and the National rate for this Index offense. See Table 8 for a count of all assaults.

Table 2

--The LV Fire Department reports "Arson" offenses for the City of Las Vegas. The population figure for this agency represents jurisdiction and is not added to the county total. Similarly, the School District Police Departments in Clark and Washoe Counties are not added to county population estimates as they represent persons served (student enrollment plus staff.)

--Assault data in this table includes ALL assaults (aggravated and simple) reported for the current month.

--County crime rates are calculated following subtraction of populations of jurisdictions failing to report.

Table 3

-- In the "Nevada vs National Index Crime and Clearance Rates" sections, the "Assaults" numbers do not include simple assaults following FBI guidelines. Therefore, they may be compared directly to National rates.

-- National crime rate figures are the latest available for comparative use (2000). Nevada figures are annualized projections.

Table 13

--At various times, property values recovered will exceed values stolen for the current reporting period.

General Notes:

- The following agency(ies) was unable to submit reports for this month: Henderson Police Department and Nye County Sheriff's Office.

-- Any late reports not submitted in time for this publication will be incorporated in to the year-to-date totals in subsequent reports.