

**Disclaimer: The following information is preliminary and cannot be certified until it is published in the annual report, Crime and Justice in Nevada, which will be available after July 1, 2004.**

Department of Public Safety  
Nevada Highway Patrol  
Records and Identification Bureau

# Monthly Report



**OCTOBER**

**2003**

**George Togliatti, Director  
Department of Public Safety**

**Colonel David Hosmer, Chief  
Nevada Highway Patrol**

**Daryl Riersgard, Manager  
Records and Identification Bureau**

**Phyllis Yancey, Administrative Assistant II  
Tenna Herman, Management Analyst I**

**Prepared by:  
Records and Identification Bureau  
Uniform Crime Reporting  
808 W. Nye Lane  
Carson City, Nevada 89703  
(775) 687-1600**

# Nevada UCR Definitions / Explanations

---

## Uniform Crime Reporting Program

The UCR program is a nationwide, cooperative, statistical effort by over 17,000 city, county and state law enforcement agencies that voluntarily report data on crimes brought to their attention. Law enforcement agencies active in the national program represent 95% of the total population of the United States. While the program's primary objective is to generate a reliable set of crime statistics for use in law enforcement administration, operation and management, its data has over the years become one of the country's leading social indicators.

In Nevada, 36 agencies are currently reporting UCR data to the statewide program representing nearly 99% of its population. Rather than submitting directly to the FBI, local agencies must submit crime data to the state UCR Repository, which compiles, analyzes and submits copies of the reports to the FBI. The Nevada UCR Program prides itself on its responsiveness to local contributing agencies that previously received limited feedback for their efforts. The Nevada program is also responsible for producing and distributing periodic reports of the information contained in its database. As its database has grown, the program's utility has become even more apparent.

Eight offenses serve as an index for gauging fluctuations in overall volumes and rates of crime. Known collectively as the " Crime Index, " these offenses include *the violent crimes of murder, rape, robbery and assault and the property crimes of burglary, larceny, motor vehicle theft and arson*. These offenses were selected as a grouped measuring device because they represent the most common crime problems. They are all serious crimes; either by their very nature or due to the volume and frequency with which they occur.

## Index Crimes Definitions

### Murder and Non-negligent Manslaughter

Murder and non negligent manslaughter, as defined in the Uniform Crime Reporting Program, is the willful (non-negligent) killing of a human being by another.

The classification of this offense, as for all other Crime Index offenses, is based solely on police investigation as opposed to the determination of a court, medical examiner, coroner, jury or other judicial entity. Not included in the count for this offense classification are deaths caused by negligence, suicide or accident, justifiable homicides and attempts to murder or assaults to murder. These are scored as aggravated assaults.

# Nevada UCR Definitions / Explanations

---

## **Forcible Rape**

Forcible rape, as defined in the program, is the carnal knowledge of a female forcibly and against her will. Assaults or attempts to commit rape by force or threat of force are also included; however, statutory rape (without force) and other sex offenses are excluded.

## **Robbery**

Robbery is the taking or attempting to take anything of value from the care, custody or control of a person or persons by force or threat of force or violence and/or by putting the victim in fear.

## **Aggravated Assault**

Aggravated assault is an unlawful attack by one person upon another for the purpose of inflicting severe or aggravated bodily injury. This type of assault is usually accompanied by the use of a weapon or by means likely to produce death or great bodily harm. Attempts are included since it is not necessary that an injury result when a gun, knife or other weapon is used which could and probably would result in serious personal injury if the crime were successfully completed

## **Burglary**

The Uniform Crime Reporting Program defines burglary as the unlawful entry of a structure to commit a felony or theft. The use of force to gain entry is not required to classify an offense as burglary. Burglary in this program is categorized into three sub classifications: forcible entry, unlawful entry where no force is used and attempted forcible entry.

## **Larceny-Theft**

Larceny-theft is the unlawful taking, carrying, leading, or riding away of property from the possession or constructive possession of another. It includes crimes such as shoplifting, pocket picking, purse-snatching, thefts from motor vehicles, thefts of motor vehicle parts and accessories, and bicycle thefts, etc., in which no use of force, violence, or fraud occurs. In the UCR Program, this crime category does not include embezzlement, "con" games, forgery, and worthless checks. Motor vehicle theft is also excluded from this category inasmuch as it is a separate Crime Index offense.

## **Motor Vehicle Theft**

Defined as the theft or attempted theft of a motor vehicle, this offense category includes the stealing of automobiles, trucks, buses, motorcycles, motor scooters, snowmobiles, etc. The definition excludes the taking of a motor vehicle for temporary use by those persons having lawful access.

# Nevada UCR

## Definitions / Explanations

---

### Arson

Arson is defined by the Uniform Crime Reporting Program as any willful or malicious burning or attempt to burn, with or without intent to defraud, a dwelling house, public building, a motor vehicle or aircraft, personal property of another, etc. Only fires determined through investigation to have been willfully or maliciously set are classified as arsons. Fires of suspicious or unknown origins are excluded.

### Population Estimates

State, county and incorporated city population estimates are prepared and reviewed prior to the end of each calendar year for certification by the governor by March 1. The Nevada Department of Taxation and Nevada State Demographer, Bureau of Business and Economic Research, College of Business Administration, University of Nevada, Reno, prepares these estimates.

### Crime Rates

Crime rates involve the number of Index Crimes per unit of population, usually per 100,000 persons. Because Nevada has such a low population, a rate per 1,000 persons is used to reflect a more realistic volume. No attempt is made to incorporate transient populations or other factors that contribute to the ratio and types of crime in given areas. Any effort to make comparisons of crime rates between areas should be tempered by these population and environmental variables.

Crime rates are one of the most meaningful statistical elements. Computation of crime rates per 1,000 population is achieved by dividing the community's population by 1,000, then dividing the number of offenses in each class by that number. The answer is the number of offenses per 1,000 population and is the crime rate for that particular offense. In Table 2, the County Total Crime Rate is computed after subtracting the population figure for all non-reporting agencies for the current month.

The index offense "Aggravated Assault" is an item of special interest to users of Nevada's UCR report. In Tables 1 & 3, where Nevada and National crime rates are compared, "simple assaults" are subtracted from the total of all assaults following FBI UCR rules, thus allowing for direct comparison. However, total assaults (simple and aggravated) are also presented in the Nevada report. This is because the Nevada UCR staff believes this figure is an important indicator of risk for citizens and it presents a more balanced picture of this portion of the crime index to law enforcement personnel.

The Federal Bureau of Investigation, Uniform Crime Reporting Section, publishes national rates.

### Clearance Rates

The percentage of crimes cleared is obtained by dividing the number of offenses cleared by the number of offenses known. This number is then multiplied by 100.

## Nevada--Statewide Summary--UCR Index Crimes

### OCTOBER 2003

Offense	Crimes this Month	# Cleared this Month	% Cleared this Month	Crimes this YTD	# Cleared this YTD	% Cleared this YTD	2003 NV			2001 Natl. Rate / 1,000		
							OCTOBER Crimes 2002	OCTOBER Cleared 2002	% OCTOBER Cleared 2002			
<b>Murder</b>	16	9	56	166	78	47	14	8	57	0.09	0.09	0.56
<b>Rape</b>	65	25	38	762	231	30	63	25	40	0.41	0.44	0.32
<b>Robbery</b>	440	97	22	4,272	861	20	437	97	22	2.32	2.40	1.48
<b>Assault *</b>	653	228	35	6,464	2,472	38	543	304	56	3.52	3.58	3.19
<b>Burglary</b>	1,904	457	24	18,395	4,075	22	1,721	379	22	10.01	8.89	7.41
<b>Larceny</b>	4,869	501	10	43,751	7,017	16	4,265	1,265	30	23.80	22.26	24.85
<b>MV Theft</b>	1,881	215	11	17,089	2,066	12	1,452	221	15	9.30	8.20	4.31
<b>Arson</b>	55	4	7	501	63	13	55	10	18	0.27	0.30	0.35
<b>Total</b>	9,883	1,536	16	91,400	16,863	18	8,550	2,309	27	49.72	46.14	42.47

\* The projected Crime Rate for Assaults is computed after subtracting Simple Assaults from the total for all Assaults following FBI guidelines. Therefore, this rate may be compared directly to the National Rate. See Table 3 and the "Footnotes/Exceptions page for further information.

# Nevada UCR - - Monthly Crime/ Clearance Summary - - All Crimes

Contributing Agency	Est. Pop	Murder		Rape		Robbery		Assault		Burglary		Larceny		MV Theft		Arson		Total Crimes	Crime Rate	Clearances	Clearance Rate
<b>Carson County</b>																		<b>OCTOBER 2003</b>			
Carson SO	54,844	0	0	0	0	0	0	79	47	20	6	99	22	12	3	0	0	210	3.83	78	37.1%
County Total	54,844	0	0	0	0	0	0	79	47	20	6	99	22	12	3	0	0	210	3.83	78	37.1%
<b>Churchill County</b>																					
Churchill SO	16,939	0	0	0	0	1	0	22	16	9	2	17	7	6	7	0	0	55	3.25	32	58.2%
Fallon PD	8,178	0	0	0	0	1	0	23	9	5	0	28	6	3	1	0	0	60	7.34	16	26.7%
County Total	25,117	0	0	0	0	2	0	45	25	14	2	45	13	9	8	0	0	115	4.58	48	41.7%
<b>Clark County</b>																					
Boulder PD	14,842	1	0	0	0	0	0	1	2	12	3	12	1	2	0	1	0	29	1.95	6	20.7%
Clark Co. Schools PD*	284,512	0	0	0	0	3	0	151	78	20	5	73	16	6	2	6	1	259	0.91	102	39.4%
Henderson	209,486	0	0	9	4	19	9	192	107	144	22	236	46	132	4	1	0	733	3.50	192	26.2%
LV Metro PD	1,176,146	14	6	36	11	317	51	2,065	287	1,094	327	2,498	14	1,313	143	23	0	7,360	6.26	839	11.4%
LV Fire Dept*																3	0	N/A	0	0.0%	
Mesquite	13,216	0	0	0	0	1	1	12	11	0	0	19	8	0	1	0	0	32	2.42	21	65.6%
North Las Vegas PD	135,967	0	0	5	4	24	4	216	136	149	12	232	57	160	10	6	0	792	5.82	223	28.2%
UNLV PD*	26,345	0	0	0	0	0	0	2	1	9	0	41	2	8	1	0	0	60	2.28	4	6.7%
County Total	1,549,657	15	6	50	19	364	65	2,639	622	1,428	369	3,111	144	1,621	161	40	1	9,268	5.98	1,387	15.0%
<b>Douglas County</b>																					
Douglas SO	44,212	0	0	0	0	1	0	57	33	17	7	78	15	6	3	0	0	159	3.60	58	36.5%
County Total	44,212	0	0	0	0	1	0	57	33	17	7	78	15	6	3	0	0	159	3.60	58	36.5%

\*Population figure not included in county total  
Table 2

## Nevada UCR - - Monthly Crime/ Clearance Summary - - All Crimes

Contributing Agency	Est. Pop	Murder		Rape		Robbery		Assault		Burglary		Larceny		MV Theft		Arson		Total Crimes	Crime Rate	Clearances	Clearance Rate
<b>Elko County</b>																		<b>OCTOBER 2003</b>			
Elko SO	23,153	0	0	1	0	0	0	4	2	7	1	15	3	1	2	0	0	28	1.21	8	28.6%
Carlin PD	2,074	0	0	0	0	0	0	2	2	0	0	4	1	0	0	0	0	6	2.89	3	50.0%
Elko PD	16,690	0	0	-1	0	0	0	18	8	5	0	28	6	1	0	1	0	52	3.12	14	26.9%
WestWendover PD	4,661	0	0	0	0	0	0	4	4	1	0	13	4	0	0	1	1	19	4.08	9	47.4%
<b>County Total</b>	<b>46,578</b>	<b>0</b>	<b>0</b>	<b>0</b>	<b>0</b>	<b>0</b>	<b>0</b>	<b>28</b>	<b>16</b>	<b>13</b>	<b>1</b>	<b>60</b>	<b>14</b>	<b>2</b>	<b>2</b>	<b>2</b>	<b>1</b>	<b>105</b>	<b>2.25</b>	<b>34</b>	<b>32.4%</b>
<b>Esmeralda County</b>																					
Esmeralda SO	1,125	0	0	0	0	0	0	1	1	1	0	0	0	0	0	0	0	2	1.78	1	50.0%
<b>County Total</b>	<b>1,125</b>	<b>0</b>	<b>0</b>	<b>0</b>	<b>0</b>	<b>0</b>	<b>0</b>	<b>1</b>	<b>1</b>	<b>1</b>	<b>0</b>	<b>0</b>	<b>0</b>	<b>0</b>	<b>0</b>	<b>0</b>	<b>0</b>	<b>2</b>	<b>1.78</b>	<b>1</b>	<b>50.0%</b>
<b>Eureka County</b>																					
Eureka SO	1,384	0	0	0	0	0	0	1	0	1	0	1	0	0	0	0	0	3	2.17	0	0.0%
<b>County Total</b>	<b>1,384</b>	<b>0</b>	<b>0</b>	<b>0</b>	<b>0</b>	<b>0</b>	<b>0</b>	<b>1</b>	<b>0</b>	<b>1</b>	<b>0</b>	<b>1</b>	<b>0</b>	<b>0</b>	<b>0</b>	<b>0</b>	<b>0</b>	<b>3</b>	<b>2.17</b>	<b>0</b>	<b>0.0%</b>
<b>Humboldt County</b>																					
Humboldt SO	9,074	0	0	0	0	0	0	6	6	0	0	1	1	1	1	0	0	8	0.88	8	100.0%
Winnemucca PD	7,234	0	0	0	0	0	0	8	7	4	2	8	6	0	0	1	1	21	2.90	16	76.2%
<b>County Total</b>	<b>16,308</b>	<b>0</b>	<b>0</b>	<b>0</b>	<b>0</b>	<b>0</b>	<b>0</b>	<b>14</b>	<b>13</b>	<b>4</b>	<b>2</b>	<b>9</b>	<b>7</b>	<b>1</b>	<b>1</b>	<b>1</b>	<b>1</b>	<b>29</b>	<b>1.78</b>	<b>24</b>	<b>82.8%</b>

\*Population figure not included in county total  
Table 2

## Nevada UCR - - Monthly Crime/ Clearance Summary - - All Crimes

Contributing Agency	Est. Pop	Murder		Rape		Robbery		Assault		Burglary		Larceny		MV Theft		Arson		Total Crimes	Crime Rate	Clearances	Clearance Rate
<b>OCTOBER 2003</b>																					
<b>Lander County</b>																					
Lander SO	5,547	0	0	0	0	0	0	7	2	8	1	4	0	3	1	0	0	22	3.97	4	18.2%
County Total	5,547	0	0	0	0	0	0	7	2	8	1	4	0	3	1	0	0	22	3.97	4	18.2%
<b>Lincoln County</b>																					
Lincoln SO	3,879	0	0	0	0	0	0	2	0	0	0	0	0	1	1	0	0	3	0.77	1	33.3%
County Total	3,879	0	0	0	0	0	0	2	0	0	0	0	0	1	1	0	0	3	0.77	1	33.3%
<b>Lyon County</b>																					
Lyon SO	35,917	0	0	2	0	1	0	51	48	20	2	59	12	7	5	0	0	140	3.90	67	47.9%
Yerington PD	2,859	0	0	0	0	0	0	7	6	4	2	3	2	0	0	0	0	14	4.90	10	71.4%
County Total	38,776	0	0	2	0	1	0	58	54	24	4	62	14	7	5	0	0	154	3.97	77	50.0%
<b>Mineral County</b>																					
Mineral SO	4,695	0	0	0	0	0	0	7	7	2	0	4	1	0	0	0	0	13	2.77	8	61.5%
County Total	4,695	0	0	0	0	0	0	7	7	2	0	4	1	0	0	0	0	13	2.77	8	61.5%
<b>Nye County</b>																					
Nye SO	35,039	0	0	0	0	2	1	54	54	50	23	48	25	7	4	1	0	162	4.62	107	66.0%
County Total	35,039	0	0	0	0	2	1	54	54	50	23	48	25	7	4	1	0	162	4.62	107	66.0%

\*Population figure not included in county total  
Table 2

# Nevada UCR - - Monthly Crime/ Clearance Summary - - All Crimes

Contributing Agency	Est. Pop	Murder		Rape		Robbery		Assault		Burglary		Larceny		MV Theft		Arson		Total Crimes	Crime Rate	Clearances	Clearance Rate
<b>Pershing County</b>																		<b>OCTOBER 2003</b>			
Pershing SO	4,670	0	0	0	0	0	0	1	0	4	0	4	1	1	1	0	0	10	2.14	2	20.0%
Lovelock PD	2,267	0	0	0	0	0	0	1	5	2	3	4	2	0	0	0	0	7	3.09	10	142.9%
<b>County Total</b>	<b>6,937</b>	<b>0</b>	<b>0</b>	<b>0</b>	<b>0</b>	<b>0</b>	<b>0</b>	<b>2</b>	<b>5</b>	<b>6</b>	<b>3</b>	<b>8</b>	<b>3</b>	<b>1</b>	<b>1</b>	<b>0</b>	<b>0</b>	<b>17</b>	<b>2.45</b>	<b>12</b>	<b>70.6%</b>
<b>Storey County</b>																					
Storey	3,639	0	0	0	0	0	0	2	2	0	0	3	1	0	0	0	0	5	1.37	3	60.0%
<b>County Total</b>	<b>3,639</b>	<b>0</b>	<b>0</b>	<b>0</b>	<b>0</b>	<b>0</b>	<b>0</b>	<b>2</b>	<b>2</b>	<b>0</b>	<b>0</b>	<b>3</b>	<b>1</b>	<b>0</b>	<b>0</b>	<b>0</b>	<b>0</b>	<b>5</b>	<b>1.37</b>	<b>3</b>	<b>60.0%</b>
<b>Washoe County</b>																					
Washoe SO	96,334	0	0	0	0	2	0	74	28	23	4	75	8	14	5	0	0	188	1.95	45	23.9%
Reno PD	187,834	1	3	6	3	57	26	492	252	230	21	994	191	158	16	6	1	1,944	10.35	513	26.4%
Sparks PD	75,255	0	0	5	3	11	5	130	99	52	14	221	39	36	4	0	0	455	6.05	164	36.0%
UNR PD*	15,000	0	0	2	0	0	0	4	3	2	0	16	0	2	0	0	0	26	1.73	3	11.5%
Washoe Co Schi PD*	66,515	0	0	0	0	0	0	0	0	4	0	22	3	0	0	5	0	31	0.47	3	9.7%
TMCC PD*	11,878	0	0	0	0	0	0	0	0	1	0	0	0	0	0	0	0	1	0.08	0	0.0%
<b>County Total</b>	<b>359,423</b>	<b>1</b>	<b>3</b>	<b>13</b>	<b>6</b>	<b>70</b>	<b>31</b>	<b>700</b>	<b>382</b>	<b>312</b>	<b>39</b>	<b>1,328</b>	<b>241</b>	<b>210</b>	<b>25</b>	<b>11</b>	<b>1</b>	<b>2,645</b>	<b>7.36</b>	<b>728</b>	<b>27.5%</b>
<b>White Pine County</b>																					
White Pine SO	8,863	0	0	0	0	0	0	13	13	4	0	9	1	1	0	0	0	27	3.05	14	51.9%
<b>County Total</b>	<b>8,863</b>	<b>0</b>	<b>0</b>	<b>0</b>	<b>0</b>	<b>0</b>	<b>0</b>	<b>13</b>	<b>13</b>	<b>4</b>	<b>0</b>	<b>9</b>	<b>1</b>	<b>1</b>	<b>0</b>	<b>0</b>	<b>0</b>	<b>27</b>	<b>3.05</b>	<b>14</b>	<b>51.9%</b>
<b>Grand Total</b>	<b>2,206,023</b>	<b>16</b>	<b>9</b>	<b>65</b>	<b>25</b>	<b>440</b>	<b>97</b>	<b>3,709</b>	<b>1,276</b>	<b>1,904</b>	<b>457</b>	<b>4,869</b>	<b>501</b>	<b>1,881</b>	<b>215</b>	<b>55</b>	<b>4</b>	<b>12,939</b>	<b>5.87</b>	<b>2,584</b>	<b>20.0%</b>

\*Population figure not included in county total  
Table 2

# Nevada UCR - - Monthly Crimes/Clearances Summary - - Index Crimes

**OCTOBER 2003**

	Est. Pop	Murder		Rape		Robbery		Assault		Burglary		Larceny		MV Theft		Arson		Total Crimes	Crime Rate	Total Clear	Clearance Rate
<b>Statewide Totals</b>																					
<b>(Crimes/Clearances)</b>	2,206,023	16	9	65	25	440	97	653	228	1904	457	4869	501	1881	215	55	4	9883	4.48	1536	15.54

## Nevada (Projected 2003) vs National (2001) Index Crime Rates

*(per 1,000 population)*

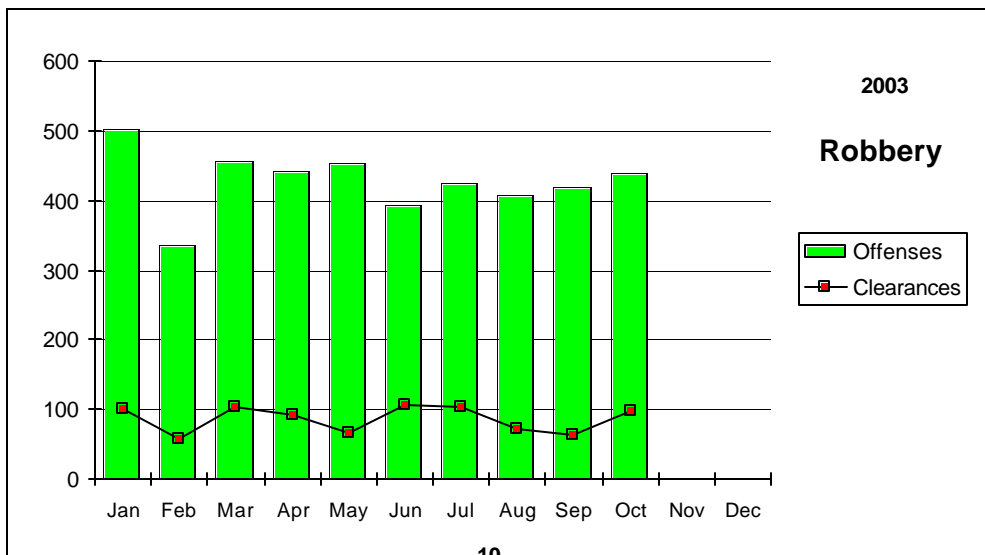
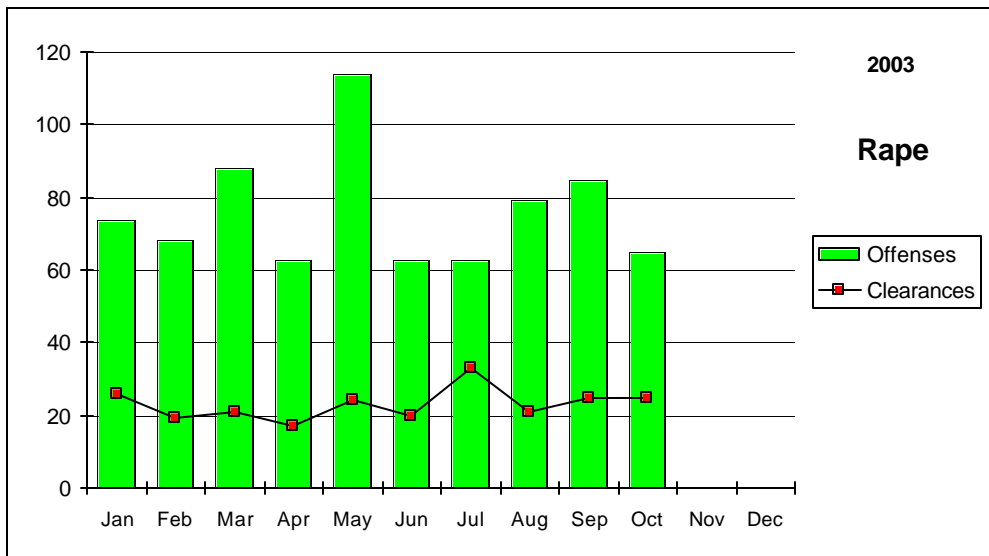
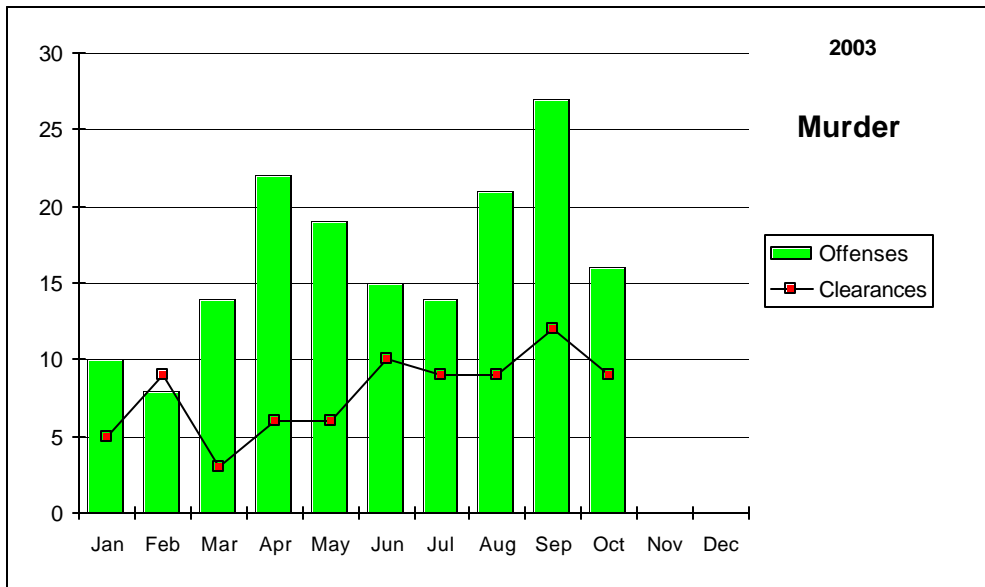
	Murder	Rape	Robbery	Assault	Burglary	Larceny	MV Theft	Arson	Crime Rate
<b>Nevada</b>	0.09	0.41	2.32	3.52	10.01	23.80	9.30	0.27	49.72
<b>National</b>	0.56	0.32	1.48	3.19	7.41	24.85	4.31	0.35	41.85

## Nevada (Projected 2003) vs National (2001) Crime Clearance Rates

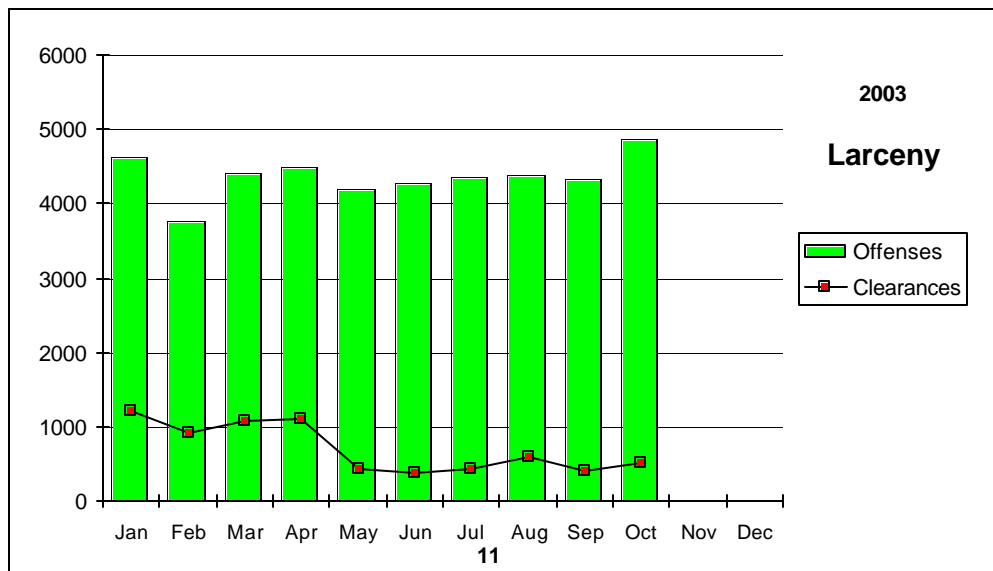
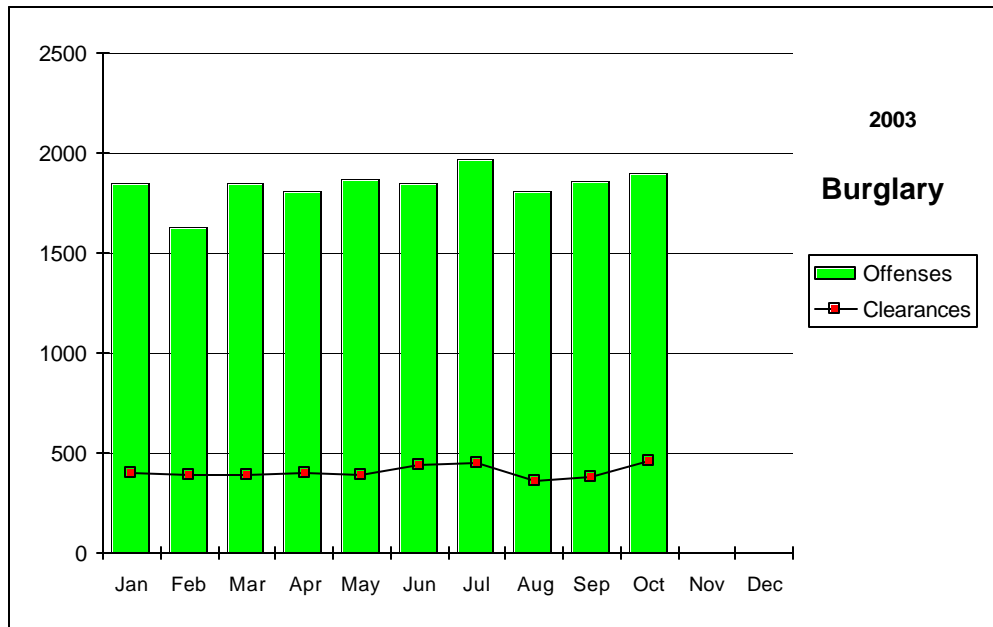
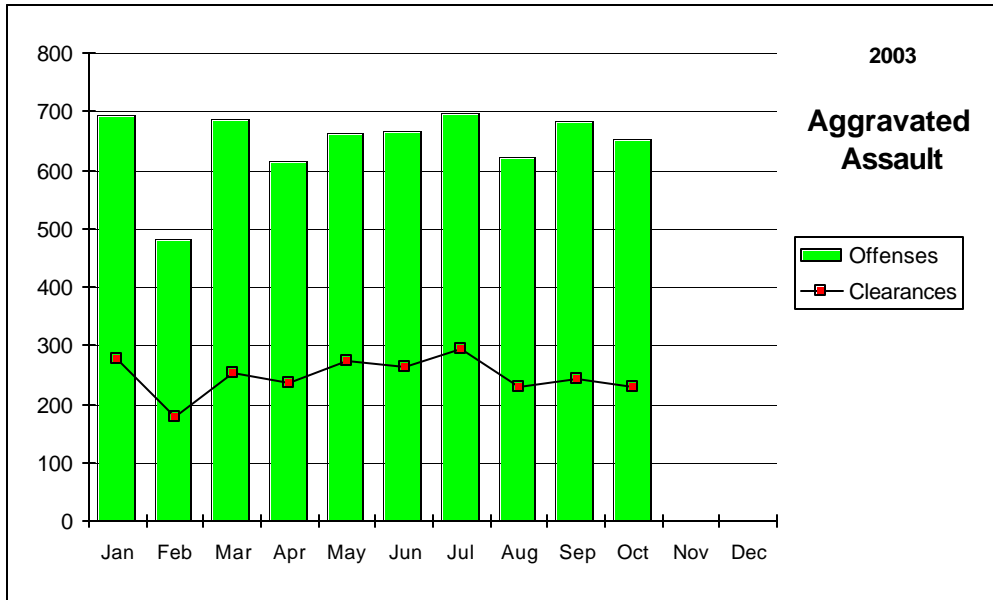
*(by Percent)*

	Murder	Rape	Robbery	Assault	Burglary	Larceny	MV Theft	Arson	Clear Rate
<b>Nevada</b>	46.99	30.31	20.15	38.24	22.15	16.04	12.09	12.57	18.82
<b>National</b>	62.40	44.30	24.90	56.10	12.70	17.60	13.60	16.00	19.60

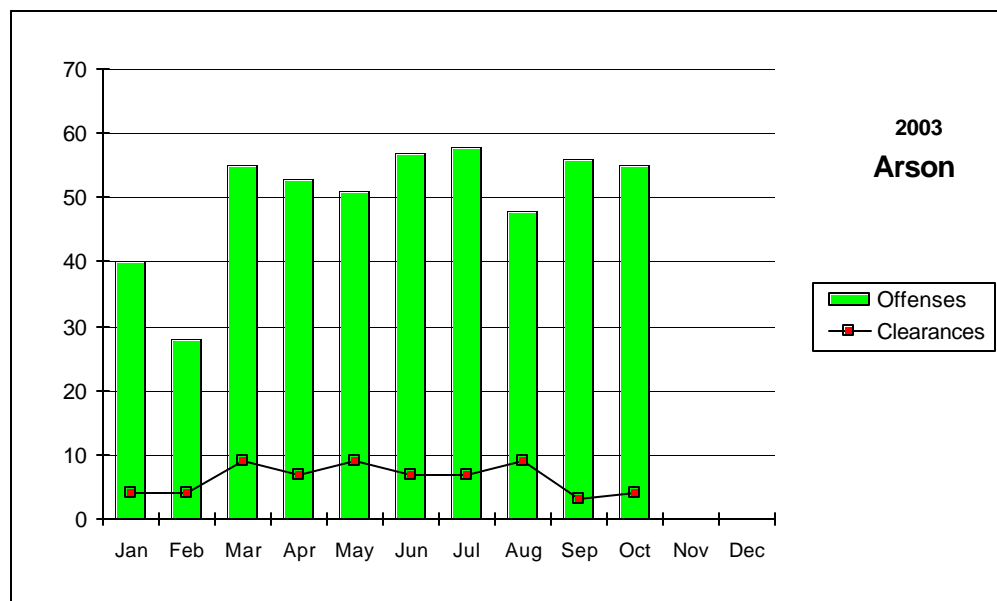
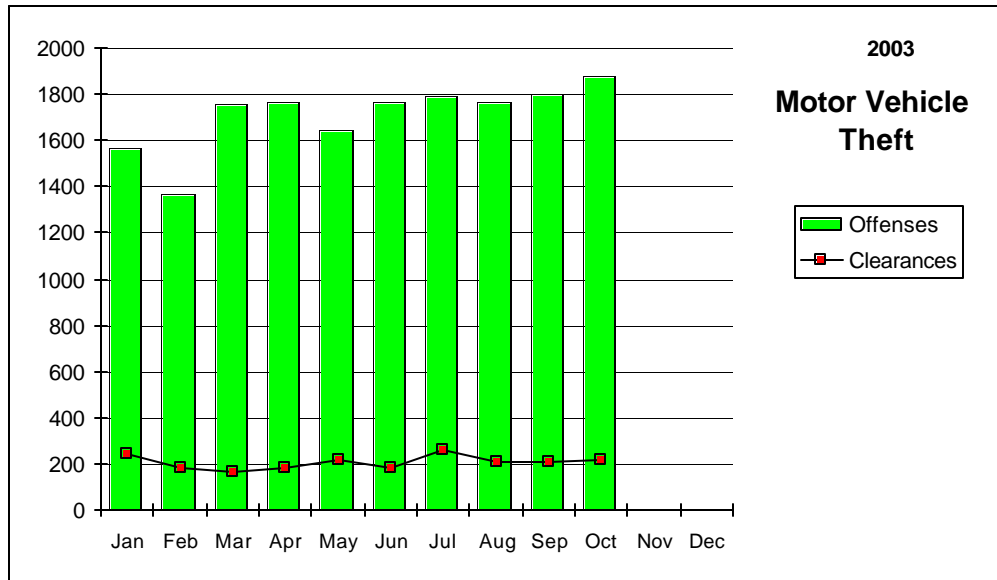
# Nevada--Graphic Summary--UCR



# Nevada--Graphic Summary--UCR



# Nevada--Graphic Summary--UCR



## Nevada--Murder--Incidence Level Variation--UCR

### OCTOBER 2003

Agency	OCTOBER 2003 Offenses	OCTOBER 2003 Cleared	YTD Offenses	2003 YTD Cleared	OCTOBER 2002 Offenses	OCTOBER 2002 Cleared	YTD Offenses	2002 YTD Cleared
Boulder	1	0	2	0	0	0	0	0
Carlin PD	0	0	0	0	0	0	0	0
Carson SO	0	0	0	0	0	0	0	0
Churchill SO	0	0	0	0	0	0	0	0
Clark Co Schl PD	0	0	0	0	0	0	0	0
Douglas SO	0	0	0	0	0	0	1	1
Elko PD	0	0	0	0	1	0	1	0
Elko SO	0	0	1	1	0	0	1	1
Esmeralda SO	0	0	0	0	0	0	0	0
Eureka SO	0	0	0	0	0	0	0	0
Fallon PD	0	0	0	0	0	0	0	0
Henderson PD	0	0	8	4	1	1	3	4
Humboldt SO	0	0	0	0	0	0	0	0
Lander SO	0	0	0	0	0	0	0	0
Lincoln SO	0	0	0	0	0	0	0	0
Lovelock PD	0	0	0	0	0	0	0	0
LV Fire Dept	0	0	0	0	0	0	0	0
LV Metro	14	6	119	47	12	6	118	66
Lyon SO	0	0	0	0	0	0	0	0
Mesquite PD	0	0	1	0	0	0	0	0
Mineral SO	0	0	0	0	0	0	1	1
NLVPD	0	0	16	9	0	0	17	4
Nye SO	0	0	0	0	0	0	2	1
Pershing SO	0	0	1	1	0	0	0	0
Reno PD	1	3	10	9	0	0	8	7
Sparks PD	0	0	3	5	0	0	2	5
Storey SO	0	0	0	0	0	0	0	0
TMCC PD	0	0	0	0	0	0	0	0
UNLV PD	0	0	0	0	0	0	0	0
UNR PD	0	0	0	0	0	0	0	0
Washoe SO	0	0	5	2	0	0	1	0
Washoe Co Schl PD	0	0	0	0	0	0	0	0
Wendover PD	0	0	0	0	0	0	1	1
White Pine SO	0	0	0	0	0	0	0	0
Winnemucca PD	0	0	0	0	0	0	0	0
Yerington PD	0	0	0	0	0	0	0	0
<b>TOTALS</b>	<b>16</b>	<b>9</b>	<b>166</b>	<b>78</b>	<b>14</b>	<b>7</b>	<b>156</b>	<b>91</b>

## Nevada--Rape--Incidence Level Variation--UCR

### OCTOBER 2003

Agency	OCTOBER 2003 Offenses	OCTOBER 2003 Cleared	YTD Offense s	2003 YTD Cleared	OCTOBER 2002 Offenses	OCTOBER 2002 Cleared	YTD Offense s	2002 YTD Cleared
Boulder	0	0	0	0	0	0	0	0
Carlin PD	0	0	0	0	0	0	0	0
Carson SO	0	0	1	0	0	0	29	6
Churchill SO	0	0	13	5	1	0	16	11
Clark Co Schl PD	0	0	0	0	0	0	0	0
Douglas SO	0	0	0	0	0	0	0	0
Elko PD	-1	0	4	4	0	0	3	3
Elko SO	1	0	9	5	1	0	5	0
Esmeralda SO	0	0	1	1	0	0	0	0
Eureka SO	0	0	0	0	0	0	0	0
Fallon PD	0	0	1	0	1	0	2	1
Henderson PD	9	4	85	27	12	5	91	32
Humboldt SO	0	0	0	0	0	0	0	0
Lander SO	0	0	2	0	0	0	0	0
Lincoln SO	0	0	1	0	0	0	0	0
Lovelock PD	0	0	-1	0	0	0	2	1
LV Fire Dept	0	0	0	0	0	0	0	0
LV Metro	36	11	451	104	66	28	416	147
Lyon SO	2	0	8	2	0	0	6	1
Mesquite PD	0	0	0	0	0	0	0	0
Mineral SO	0	0	0	0	0	0	1	1
NLVPD	5	4	44	24	7	4	42	22
Nye SO	0	0	2	2	0	0	0	0
Pershing SO	0	0	3	1	0	0	3	1
Reno PD	6	3	78	14	16	3	112	16
Sparks PD	5	3	41	32	3	5	45	51
Storey SO	0	0	0	0	0	0	1	1
TMCC PD	0	0	0	0	0	0	0	0
UNLV PD	0	0	3	1	0	0	2	0
UNR PD	2	0	5	0	1	0	2	0
Washoe SO	0	0	4	3	0	0	6	2
Washoe Co Schl PD	0	0	0	1	0	0	0	0
Wendover PD	0	0	1	0	0	0	2	2
White Pine SO	0	0	2	1	0	0	1	1
Winnemucca PD	0	0	4	4	0	0	2	2
Yerington PD	0	0	0	0	0	0	0	0
<b>TOTALS</b>	<b>65</b>	<b>25</b>	<b>762</b>	<b>231</b>	<b>108</b>	<b>45</b>	<b>789</b>	<b>301</b>

## Nevada--Robbery--Incidence Level Variation--UCR

### OCTOBER 2003

Agency	OCTOBER 2003 Offenses	OCTOBER 2003 Cleared	YTD Offenses	2003 YTD Cleared	OCTOBER 2002 Offenses	OCTOBER 2002 Cleared	YTD Offenses	2002 YTD Cleared
Boulder	0	0	2	1	0	0	2	1
Carlin PD	0	0	0	0	1	0	1	0
Carson SO	0	0	16	5	4	1	26	11
Churchill SO	1	0	2	0	0	0	1	0
Clark Co Schl PD	3	0	29	13	2	1	16	6
Douglas SO	1	0	6	4	1	1	9	6
Elko PD	0	0	8	3	0	0	5	0
Elko SO	0	0	2	2	0	0	3	2
Esmeralda SO	0	0	0	0	0	0	0	0
Eureka SO	0	0	0	0	0	0	0	0
Fallon PD	1	0	7	2	0	0	4	1
Henderson PD	19	9	135	41	18	7	154	39
Humboldt SO	0	0	0	0	0	0	0	0
Lander SO	0	0	1	0	0	0	1	0
Lincoln SO	0	0	0	0	0	0	1	0
Lovelock PD	0	0	0	0	0	0	0	0
LV Fire Dept	0	0	0	0	0	0	0	0
LV Metro	317	51	3256	568	349	44	3043	563
Lyon SO	1	0	5	1	0	0	1	0
Mesquite PD	1	1	4	2	2	0	3	1
Mineral SO	0	0	0	0	0	0	1	1
NLVPD	24	4	271	45	31	5	373	65
Nye SO	2	1	12	5	1	1	14	8
Pershing SO	0	0	0	0	0	0	1	0
Reno PD	57	26	399	125	34	9	352	95
Sparks PD	11	5	82	28	7	4	80	38
Storey SO	0	0	4	2	0	0	0	0
TMCC PD	0	0	0	0	0	0	0	0
UNLV PD	0	0	3	1	0	0	4	1
UNR PD	0	0	0	0	0	0	0	0
Washoe SO	2	0	18	7	1	1	11	5
Washoe Co Schl PD	0	0	5	5	0	0	1	0
Wendover PD	0	0	2	0	0	0	1	0
White Pine SO	0	0	0	0	0	0	2	1
Winnemucca PD	0	0	3	1	0	0	1	0
Yerington PD	0	0	0	0	0	0	0	0
<b>TOTALS</b>	<b>440</b>	<b>97</b>	<b>4272</b>	<b>861</b>	<b>451</b>	<b>74</b>	<b>4111</b>	<b>844</b>

## Nevada--Aggravated Assault--Incidence Level Variation--UCR

### OCTOBER 2003

Agency	OCTOBER	OCTOBER	2003 YTD		OCTOBER	OCTOBER	2002 YTD	
	2003 Offenses	2003 Cleared	Offenses	Cleared	2002 Offenses	2002 Cleared	Offenses	Cleared
Boulder	1	1	30	14	4	4	47	35
Carlin PD	2	2	9	8	1	1	9	7
Carson SO	15	8	197	104	37	25	186	95
Churchill SO	4	3	48	36	5	2	35	27
Clark Co SchI PD	11	9	38	25	0	0	28	21
Douglas SO	8	3	38	18	3	2	37	22
Elko PD	0	0	12	3	0	0	18	9
Elko SO	2	1	12	9	3	3	18	11
Esmeralda SO	1	1	5	5	0	0	1	1
Eureka SO	1	0	4	2	0	0	5	2
Fallon PD	1	1	7	4	2	0	13	7
Henderson PD	12	8	182	138	8	4	117	100
Humboldt SO	2	2	42	27	3	3	46	29
Lander SO	4	0	19	5	3	0	31	16
Lincoln SO	0	0	1	1	0	0	2	1
Lovelock PD	0	1	13	11	1	1	4	3
LV Fire Dept	0	0	0	0	0	0	0	0
LV Metro	399	77	3899	873	317	115	3802	1561
Lyon SO	12	10	68	58	7	7	52	49
Mesquite PD	1	0	13	11	0	0	6	6
Mineral SO	0	0	2	2	0	0	3	3
NLVPD	50	34	656	355	61	30	666	362
Nye SO	8	8	77	77	11	11	93	81
Pershing SO	0	0	18	11	0	0	9	7
Reno PD	77	31	576	306	79	29	809	420
Sparks PD	20	16	178	150	12	12	162	153
Storey SO	0	0	0	0	0	0	25	10
TMCC PD	0	0	0	0	0	0	0	0
UNLV PD	0	0	5	3	3	3	6	5
UNR PD	1	1	3	2	0	0	2	2
Washoe SO	16	6	257	164	6	6	131	56
Washoe Co SchI PD	0	0	4	4	0	0	5	5
Wendover PD	2	2	9	9	0	0	10	8
White Pine SO	2	2	27	24	2	1	21	18
Winnemucca PD	1	1	11	10	2	0	8	6
Yerington PD	0	0	4	3	0	0	8	4
<b>TOTALS</b>	<b>653</b>	<b>228</b>	<b>6464</b>	<b>2472</b>	<b>570</b>	<b>259</b>	<b>6415</b>	<b>3142</b>

## Nevada--All Assaults--Incidence Level Variation--UCR

### OCTOBER 2003

Agency	OCTOBER 2003 Offenses	OCTOBER 2003 Cleared	2003 YTD Offenses	2003 YTD Cleared	OCTOBER 2002 Offenses	OCTOBER 2002 Cleared	2002 YTD Offenses	2002 YTD Cleared
Boulder	1	2	35	18	8	8	138	45
Carlin PD	2	2	23	18	1	1	17	14
Carson SO	79	43	820	403	79	47	762	413
Churchill SO	20	16	189	151	22	16	193	150
Clark Co Schl PD	151	78	767	477	120	75	710	432
Douglas SO	57	33	480	334	31	20	397	309
Elko PD	18	8	238	104	17	13	209	118
Elko SO	4	2	20	14	5	7	83	56
Esmeralda SO	1	1	6	6	0	0	3	3
Eureka SO	1	0	9	4	0	0	10	4
Fallon PD	26	22	204	146	23	9	177	102
Henderson PD	192	107	1957	1304	171	120	1810	1402
Humboldt SO	6	6	57	38	6	6	51	33
Lander SO	7	2	57	36	3	0	48	23
Lincoln SO	2	0	16	9	0	0	18	12
Lovelock PD	1	5	46	44	3	3	51	49
LV Fire Dept	0	0	0	0	0	0	0	0
LV Metro	2065	287	20721	4250	1793	713	19658	8396
Lyon SO	51	48	396	372	42	42	383	375
Mesquite PD	12	11	165	137	26	21	223	160
Mineral SO	7	7	36	38	2	2	28	28
NLVPD	216	136	2373	1285	238	115	2344	1367
Nye SO	54	54	551	551	49	49	556	511
Pershing SO	1	0	37	25	1	0	24	14
Reno PD	492	252	3760	1930	331	129	3443	1706
Sparks PD	130	99	1311	1093	97	89	1125	1006
Storey SO	2	2	22	10	0	0	25	10
TMCC PD	0	0	1	0	2	0	4	0
UNLV PD	2	1	25	17	6	5	19	16
UNR PD	4	3	23	9	4	2	13	10
Washoe SO	74	28	728	448	66	25	733	479
Washoe Co Schl PD	0	0	20	20	0	0	181	171
Wendover PD	4	4	39	35	5	3	45	33
White Pine SO	13	13	98	85	7	5	70	56
Winnemucca PD	8	7	80	74	8	6	82	74
Yerington PD	7	6	54	48	0	0	10	5
<b>TOTALS</b>	<b>3710</b>	<b>1285</b>	<b>35364</b>	<b>13533</b>	<b>3166</b>	<b>1531</b>	<b>33643</b>	<b>17582</b>

**Nevada--Burglary--Incidence Level Variation--UCR**

**OCTOBER 2003**

Agency	OCTOBER 2003 Offenses	OCTOBER 2003 Cleared	YTD Offenses	2003 YTD Cleared	OCTOBER 2002 Offenses	OCTOBER 2002 Cleared	YTD Offenses	2002 YTD Cleared
Boulder	12	3	97	32	11	0	70	10
Carlin PD	0	0	10	5	2	0	11	0
Carson SO	20	6	345	47	33	7	333	50
Churchill SO	9	2	66	18	5	4	52	17
Clark Co Schl PD	20	5	221	40	24	8	249	37
Douglas SO	17	7	223	45	15	2	169	40
Elko PD	5	0	106	9	14	1	125	29
Elko SO	7	1	82	16	15	2	110	21
Esmeralda SO	1	0	6	2	0	0	2	1
Eureka SO	1	0	5	0	1	0	3	0
Fallon PD	5	0	51	10	3	0	44	6
Henderson PD	144	22	1184	141	114	17	1244	180
Humboldt SO	0	0	22	3	0	0	36	7
Lander SO	8	1	29	5	3	0	30	4
Lincoln SO	0	0	20	8	2	1	12	3
Lovelock PD	2	3	22	13	3	1	21	14
LV Fire Dept	0	0	0	0	0	0	0	0
LV Metro	1094	327	10725	2850	975	237	9215	2563
Lyon SO	20	2	192	25	16	3	129	22
Mesquite PD	0	0	10	10	0	0	14	9
Mineral SO	2	0	30	3	1	0	19	4
NLVPD	149	12	1395	149	140	13	1233	110
Nye SO	50	23	424	189	41	24	349	174
Pershing SO	4	0	33	5	4	0	17	0
Reno PD	230	21	1648	160	111	8	1086	117
Sparks PD	52	14	680	179	59	19	577	174
Storey SO	0	0	6	0	1	1	10	2
TMCC PD	1	0	5	0	0	0	7	0
UNLV PD	9	0	113	5	9	0	69	3
UNR PD	2	0	20	2	7	0	30	0
Washoe SO	23	4	424	44	30	0	350	31
Washoe Co Schl PD	4	0	52	8	0	1	8	1
Wendover PD	1	0	15	3	1	0	26	9
White Pine SO	4	0	45	9	1	0	28	1
Winnemucca PD	4	2	47	19	2	0	61	16
Yerington PD	4	2	42	21	1	1	37	22
<b>TOTALS</b>	<b>1904</b>	<b>457</b>	<b>18395</b>	<b>4075</b>	<b>1644</b>	<b>350</b>	<b>15776</b>	<b>3677</b>

## Nevada--Larceny--Incidence Level Variation--UCR

### OCTOBER 2003

Agency	OCTOBER 2003 Offenses	OCTOBER 2003 Cleared	YTD Offenses	2003 YTD Cleared	OCTOBER 2002 Offenses	OCTOBER 2002 Cleared	YTD Offenses	2002 YTD Cleared
Boulder	12	1	127	15	13	1	123	14
Carlin PD	4	1	35	11	12	0	47	6
Carson SO	99	22	978	193	102	20	1033	131
Churchill SO	17	7	130	38	9	0	133	26
Clark Co SchI PD	73	16	658	97	79	16	603	69
Douglas SO	78	15	626	167	54	22	541	172
Elko PD	28	6	318	40	35	7	359	65
Elko SO	15	3	81	12	13	3	94	15
Esmeralda SO	0	0	2	2	0	0	2	0
Eureka SO	1	0	11	2	3	0	13	3
Fallon PD	28	6	350	64	59	8	362	52
Henderson PD	236	46	2366	490	241	37	2182	503
Humboldt SO	1	1	36	14	1	0	51	12
Lander SO	4	0	29	3	1	0	47	3
Lincoln SO	0	0	32	6	1	0	19	1
Lovelock PD	4	2	29	19	1	0	30	20
LV Fire Dept	0	0	0	0	0	0	0	0
LV Metro	2498	14	24577	2867	2345	618	20495	5882
Lyon SO	59	12	375	86	32	6	311	60
Mesquite PD	19	8	195	58	21	9	129	68
Mineral SO	4	1	19	7	0	0	17	6
NLVPD	232	57	2236	476	276	68	2576	577
Nye SO	48	25	473	252	43	20	500	261
Pershing SO	4	1	44	16	4	2	55	11
Reno PD	994	191	6421	1295	725	147	6339	1125
Sparks PD	221	39	2046	549	187	40	2057	599
Storey SO	3	1	32	3	0	0	30	3
TMCC PD	0	0	9	0	0	0	12	0
UNLV PD	41	2	229	7	27	0	290	13
UNR PD	16	0	116	2	22	0	116	4
Washoe SO	75	8	630	81	78	21	773	143
Washoe Co SchI PD	22	3	211	43	28	6	117	36
Wendover PD	13	4	86	25	8	3	115	25
White Pine SO	9	1	107	22	14	1	103	11
Winnemucca PD	8	6	116	45	10	5	120	39
Yerington PD	3	2	21	10	4	4	34	24
<b>TOTALS</b>	<b>4869</b>	<b>501</b>	<b>43751</b>	<b>7017</b>	<b>4448</b>	<b>1064</b>	<b>39828</b>	<b>9979</b>

## Nevada--MV Theft--Incidence Level Variation--UCR

### OCTOBER 2003

Agency	OCTOBER 2003 Offenses	OCTOBER 2003 Cleared	YTD Offense s	2003 YTD Cleared	OCTOBER 2002 Offenses	OCTOBER 2002 Cleared	YTD Offense s	2002 YTD Cleared
Boulder	2	0	24	16	3	3	23	13
Carlin PD	0	0	7	3	0	0	5	4
Carson SO	12	3	139	22	9	3	106	16
Churchill SO	6	7	41	24	1	0	23	12
Clark Co Schl PD	6	2	45	5	4	0	40	2
Douglas SO	6	3	46	33	2	2	50	39
Elko PD	1	0	25	4	3	1	25	8
Elko SO	1	2	19	12	1	0	15	10
Esmeralda SO	0	0	0	0	0	0	1	1
Eureka SO	0	0	4	2	1	1	1	1
Fallon PD	3	1	20	4	0	0	21	9
Henderson PD	132	4	1155	59	120	4	927	65
Humboldt SO	1	1	5	3	2	2	11	7
Lander SO	3	1	6	2	1	0	8	1
Lincoln SO	1	1	8	1	2	1	8	4
Lovelock PD	0	0	0	0	0	0	3	3
LV Fire Dept	0	0	0	0	0	0	0	0
LV Metro	1313	143	12057	1471	1193	187	10176	1569
Lyon SO	7	5	64	18	3	2	39	14
Mesquite PD	0	1	30	12	2	0	34	16
Mineral SO	0	0	0	0	0	0	2	1
NLVPD	160	10	1468	91	131	15	1296	97
Nye SO	7	4	53	29	6	5	61	40
Pershing SO	1	1	2	1	1	0	3	0
Reno PD	158	16	1248	120	113	7	922	80
Sparks PD	36	4	345	81	27	16	255	94
Storey SO	0	0	2	0	0	0	5	3
TMCC PD	0	0	0	0	0	0	1	0
UNLV PD	8	1	69	6	18	1	55	3
UNR PD	2	0	7	0	1	0	5	0
Washoe SO	14	5	152	27	21	2	153	22
Washoe Co Schl PD	0	0	6	3	2	1	2	1
Wendover PD	0	0	10	8	0	0	12	5
White Pine SO	1	0	19	5	3	0	7	0
Winnemucca PD	0	0	13	4	0	0	20	5
Yerington PD	0	0	0	0	0	0	3	1
<b>TOTALS</b>	<b>1881</b>	<b>215</b>	<b>17089</b>	<b>2066</b>	<b>1670</b>	<b>253</b>	<b>14318</b>	<b>2146</b>

## Nevada--Arson--Incidence Level Variation--UCR

### OCTOBER 2003

Agency	OCTOBER 2003 Offenses	OCTOBER 2003 Cleared	YTD Offense s	2003 YTD Cleared	OCTOBER 2002 Offenses	OCTOBER 2002 Cleared	YTD Offense s	2002 YTD Cleared
Boulder	1	0	3	1	0	0	3	1
Carlin PD	0	0	0	0	0	0	0	0
Carson SO	0	0	14	1	4	0	14	2
Churchill SO	0	0	1	1	0	0	2	1
Clark Co Schl PD	6	1	61	17	12	4	55	20
Douglas SO	0	0	3	2	0	0	4	3
Elko PD	1	0	2	1	1	0	9	2
Elko SO	0	0	2	1	0	0	1	0
Esmeralda SO	0	0	0	0	0	0	0	0
Eureka SO	0	0	0	0	0	0	1	0
Fallon PD	0	0	0	0	0	0	0	0
Henderson PD	1	0	39	4	6	2	39	9
Humboldt SO	0	0	0	0	0	0	0	0
Lander SO	0	0	0	0	0	0	0	0
Lincoln SO	0	0	0	0	0	0	0	0
Lovelock PD	0	0	0	0	0	0	0	0
LV Fire Dept	3	0	70	7	9	2	124	11
LV Metro	23	0	169	3	12	0	134	0
Lyon SO	0	0	8	4	1	0	3	1
Mesquite PD	0	0	0	0	0	0	0	0
Mineral SO	0	0	0	0	1	0	3	1
NLVPD	6	0	45	6	6	0	53	5
Nye SO	1	0	10	0	3	3	12	7
Pershing SO	0	0	0	0	0	0	0	0
Reno PD	6	1	41	6	11	1	52	9
Sparks PD	0	0	0	0	0	0	0	0
Storey SO	0	0	2	2	0	0	0	0
TMCC PD	0	0	0	0	0	0	0	0
UNLV PD	0	0	1	1	1	0	3	0
UNR PD	0	0	1	0	0	0	1	1
Washoe SO	0	0	5	1	1	0	5	2
Washoe CO Sci PD	5	0	19	3	1	0	4	2
Wendover PD	1	1	1	1	0	0	2	0
White Pine SO	0	0	1	0	1	1	3	2
Winnemucca PD	1	1	3	1	0	0	2	2
Yerington PD	0	0	0	0	0	0	0	0
<b>TOTALS</b>	<b>55</b>	<b>4</b>	<b>501</b>	<b>63</b>	<b>70</b>	<b>13</b>	<b>529</b>	<b>81</b>

# Nevada--Hate Crimes--UCR

Oct-03

AGENCY	OFFENSE	LOCATION	BIAS	VICTIM TYPE / NUMBER	OFFENDER RACE / NUMBER
Las Vegas Metro PD	Intimidation	Other/Unknown Radio Station	Anti-Black	Business-1	Unknown-00
Las Vegas Metro PD	Aggravated Assault	Highway/Road/Alley/Street	Anti-Black	Individual-1	White-1
Las Vegas Metro PD	Simple Assault	Hotel/Motel/Etc.	Anti-White	Individual-1	Black-1
Las Vegas Metro PD	Aggravated Assault	Parking Lot/ Garage	Anti-Black	Individual-1	White-2
Las Vegas Metro PD	Simple Assault	Department / Discount Store	Anti- Hispanic	Individual-1	White-1
North Las Vegas	Intimidation	Residence/Home	Anti-Black	Individual-1	Unknown-00

# Stolen/Recovered Property Report

## OCTOBER 2003

Property Type	Boulder PD	Carlin PD	Carson SO	Churchill SO	Clark Co Schi PD	Douglas SO	Elko PD	Elko SO	Esmeralda SO
<b>Currency</b>									
Stolen	\$4,495	\$0	\$1,501	\$255	\$854	\$24,981	\$2,765	\$3,519	\$33
Recovered	\$0	\$0	\$0	\$0	\$199	\$5,771	\$0	\$0	\$0
% Recovered	0.0%	0.0%	0.0%	0.0%	23.3%	23.1%	0.0%	0.0%	0.0%
<b>Jewelry</b>									
Stolen	\$5,100	\$0	\$19,594	\$0	\$6,986	\$26,600	\$0	\$0	\$0
Recovered	\$0	\$0	\$0	\$0	\$0	\$20,000	\$0	\$1,000	\$0
% Recovered	0.0%	0.0%	0.0%	0.0%	0.0%	75.2%	0.0%	0.0%	0.0%
<b>Clothing</b>									
Stolen	\$0	\$0	\$1,215	\$300	\$0	\$19,405	\$72	\$1,000	\$0
Recovered	\$0	\$0	\$0	\$300	\$0	\$19,005	\$0	\$0	\$0
% Recovered	0.0%	0.0%	0.0%	100.0%	0.0%	97.9%	0.0%	0.0%	0.0%
<b>Motor Vehicle</b>									
Stolen	\$7,500	\$0	\$47,300	\$66,775	\$46,891	\$34,475	\$3,000	\$5,000	\$0
Recovered	\$7,000	\$0	\$48,700	\$66,275	\$30,000	\$8,675	\$1,200	\$5,000	\$0
% Recovered	93.3%	0.0%	103.0%	99.3%	64.0%	25.2%	40.0%	100.0%	0.0%
<b>Office Equipment</b>									
Stolen	\$0	\$0	\$706	\$0	\$9,485	\$0	\$230	\$0	\$0
Recovered	\$0	\$0	\$0	\$0	\$0	\$0	\$0	\$0	\$0
% Recovered	0.0%	0.0%	0.0%	0.0%	0.0%	0.0%	0.0%	0.0%	0.0%
<b>TV, VCR, Camera, Etc.</b>									
Stolen	\$0	\$20	\$6,189	\$40	\$12,937	\$2,685	\$2,027	\$1,433	\$0
Recovered	\$0	\$0	\$0	\$0	\$699	\$0	\$15	\$34	\$0
% Recovered	0.0%	0.0%	0.0%	0.0%	5.4%	0.0%	0.7%	2.4%	0.0%
<b>Firearm</b>									
Stolen	\$765	\$0	\$0	\$500	\$0	\$900	\$950	\$1,600	\$0
Recovered	\$465	\$0	\$0	\$0	\$0	\$900	\$0	\$0	\$0
% Recovered	60.8%	0.0%	0.0%	0.0%	0.0%	100.0%	0.0%	0.0%	0.0%
<b>Household Goods</b>									
Stolen	\$0	\$0	\$378	\$5,460	\$0	\$0	\$580	\$614	\$0
Recovered	\$0	\$0	\$0	\$0	\$0	\$0	\$0	\$0	\$0
% Recovered	0.0%	0.0%	0.0%	0.0%	0.0%	0.0%	0.0%	0.0%	0.0%
<b>Consumable Goods</b>									
Stolen	\$118	\$0	\$1,162	\$789	\$0	\$244	\$185	\$22	\$0
Recovered	\$0	\$0	\$1,121	\$150	\$0	\$226	\$7	\$1	\$0
% Recovered	0.0%	0.0%	96.5%	19.0%	0.0%	92.6%	3.8%	4.5%	0.0%
<b>Livestock</b>									
Stolen	\$0	\$0	\$30	\$0	\$0	\$0	\$0	\$0	\$0
Recovered	\$0	\$0	\$30	\$0	\$0	\$0	\$0	\$0	\$0
% Recovered	0.0%	0.0%	100.0%	0.0%	0.0%	0.0%	0.0%	0.0%	0.0%
<b>Misc.</b>									
Stolen	\$13,368	\$830	\$46,507	\$2,450	\$57,617	\$19,357	\$2,125	\$3,677	\$0
Recovered	\$7,465	\$20	\$642	\$150	\$730	\$2,713	\$147	\$108	\$0
% Recovered	55.8%	2.4%	1.4%	6.1%	1.3%	14.0%	6.9%	2.9%	0.0%
<b>TOTALS</b>									
Stolen	\$31,346	\$850	\$124,582	\$76,569	\$134,770	\$128,647	\$11,934	\$16,865	\$33
Recovered	\$14,930	\$20	\$50,493	\$66,875	\$31,628	\$57,290	\$1,369	\$6,143	\$0
% Recovered	47.6%	2.4%	40.5%	87.3%	23.5%	44.5%	11.5%	36.4%	0.0%

# Stolen/Recovered Property Report

## OCTOBER 2003

Property Type	Eureka SO	Fallon PD	Henderson PD	Humboldt SO	Lander SO	Las Vegas Metro	Lincoln SO	Lovelock PD	Lyon SO
<b>Currency</b>									
Stolen	\$0	\$40	\$38,280	\$0	\$750	\$1,018,471	\$0	\$700	\$4,780
Recovered	\$0	\$0	\$7,543	\$4,849	\$0	\$1,411	\$0	\$0	\$0
% Recovered	0.0%	0.0%	19.7%	0.0%	0.0%	0.1%	0.0%	0.0%	0.0%
<b>Jewelry</b>									
Stolen	\$0	\$33	\$126,742	\$0	\$0	\$2,614,575	\$0	\$0	\$460
Recovered	\$0	\$33	\$9,264	\$51,940	\$0	\$52,948	\$0	\$0	\$0
% Recovered	0.0%	100.0%	7.3%	0.0%	0.0%	2.0%	0.0%	0.0%	0.0%
<b>Clothing</b>									
Stolen	\$0	\$605	\$9,048	\$0	\$0	\$257,063	\$0	\$0	\$48
Recovered	\$0	\$105	\$1,096	\$0	\$0	\$21,007	\$0	\$31	\$0
% Recovered	0.0%	17.4%	12.1%	0.0%	0.0%	8.2%	0.0%	0.0%	0.0%
<b>Motor Vehicle</b>									
Stolen	\$0	\$2,000	\$1,634,864	\$1,500	\$1,800	\$5,705,280	\$8,000	\$0	\$58,200
Recovered	\$0	\$2,000	\$1,244,185	\$1,500	\$1,800	\$2,023,610	\$8,000	\$0	\$35,700
% Recovered	0.0%	100.0%	76.1%	100.0%	100.0%	35.5%	100.0%	0.0%	61.3%
<b>Office Equipment</b>									
Stolen	\$0	\$0	\$32,250	\$0	\$0	\$694,479	\$0	\$0	\$0
Recovered	\$0	\$0	\$150	\$5,598	\$0	\$14,172	\$0	\$0	\$0
% Recovered	0.0%	0.0%	0.5%	0.0%	0.0%	2.0%	0.0%	0.0%	0.0%
<b>TV, VCR, Camera, Etc.</b>									
Stolen	\$0	\$60	\$140,725	\$0	\$1	\$935,491	\$0	\$315	\$8,833
Recovered	\$0	\$0	\$388	\$2,180	\$0	\$12,551	\$0	\$0	\$1,380
% Recovered	0.0%	0.0%	0.3%	0.0%	0.0%	1.3%	0.0%	0.0%	15.6%
<b>Firearm</b>									
Stolen	\$0	\$0	\$13,524	\$0	\$385	\$53,633	\$0	\$0	\$1,000
Recovered	\$0	\$0	\$1,450	\$1,440	\$0	\$975	\$0	\$0	\$0
% Recovered	0.0%	0.0%	10.7%	0.0%	0.0%	1.8%	0.0%	0.0%	0.0%
<b>Household Goods</b>									
Stolen	\$0	\$0	\$6,609	\$0	\$1,470	\$141,546	\$0	\$0	\$1,230
Recovered	\$0	\$0	\$587	\$640	\$1	\$458	\$0	\$0	\$0
% Recovered	0.0%	0.0%	8.9%	0.0%	0.1%	0.3%	0.0%	0.0%	0.0%
<b>Consumable Goods</b>									
Stolen	\$40	\$220	\$3,590	\$2,500	\$87	\$39,059	\$0	\$0	\$560
Recovered	\$0	\$208	\$557	\$120	\$20	\$12,573	\$0	\$0	\$336
% Recovered	0.0%	94.5%	15.5%	4.8%	23.0%	32.2%	0.0%	0.0%	60.0%
<b>Livestock</b>									
Stolen	\$0	\$0	\$0	\$0	\$0	\$3,700	\$0	\$0	\$0
Recovered	\$0	\$0	\$0	\$0	\$0	\$0	\$0	\$0	\$0
% Recovered	0.0%	0.0%	0.0%	0.0%	0.0%	0.0%	0.0%	0.0%	0.0%
<b>Misc.</b>									
Stolen	\$175	\$5,185	\$188,396	\$0	\$1,162	\$2,912,217	\$0	\$700	\$73,757
Recovered	\$0	\$472	\$48,863	\$6,300	\$355	\$112,935	\$0	\$700	\$14,812
% Recovered	0.0%	9.1%	25.9%	0.0%	30.6%	3.9%	0.0%	100.0%	20.1%
<b>TOTALS</b>									
Stolen	\$215	\$8,143	\$2,194,028	\$4,000	\$5,655	\$14,375,514	\$8,000	\$1,715	\$148,868
Recovered	\$0	\$2,818	\$1,314,083	\$74,567	\$2,176	\$2,252,640	\$8,000	\$731	\$52,228
% Recovered	0.0%	34.6%	59.9%	1864.2%	38.5%	15.7%	100.0%	42.6%	35.1%

# Stolen/Recovered Property Report

## OCTOBER 2003

Property Type	Mesquite PD	Mineral SO	NLVPD	Nye SO	Pershing SO	Reno PD	Sparks PD	Storey SO	TMCC PD	UNLV PD
<b>Currency</b>										
Stolen	\$1,810	\$150	\$45,599	\$1,453	\$0	\$192,895	\$11,685	\$220	\$150	\$162
Recovered	\$610	\$150	\$0	\$0	\$0	\$80,503	\$0	\$60	\$0	\$0
% Recovered	33.7%	100.0%	0.0%	0.0%	0.0%	41.7%	0.0%	27.3%	0.0%	0.0%
<b>Jewelry</b>										
Stolen	\$2,000	\$0	\$77,442	\$0	\$0	\$197,582	\$45,239	\$0	\$0	\$0
Recovered	\$0	\$0	\$1,001	\$0	\$0	\$824	\$7,370	\$0	\$0	\$0
% Recovered	0.0%	0.0%	1.3%	0.0%	0.0%	0.4%	16.3%	0.0%	0.0%	0.0%
<b>Clothing</b>										
Stolen	\$200	\$150	\$13,944	\$500	\$20	\$28,744	\$2,001	\$0	\$20	\$1,340
Recovered	\$0	\$0	\$837	\$250	\$20	\$5,896	\$395	\$0	\$0	\$0
% Recovered	0.0%	0.0%	6.0%	50.0%	100.0%	20.5%	19.7%	0.0%	0.0%	0.0%
<b>Motor Vehicle</b>										
Stolen	\$0	\$0	\$1,229,649	\$16,250	\$2,000	\$629,380	\$548,490	\$0	\$0	\$18,650
Recovered	\$13,000	\$0	\$1,083,591	\$6,750	\$0	\$514,090	\$472,200	\$0	\$0	\$13,500
% Recovered	0.0%	0.0%	88.1%	41.5%	0.0%	81.7%	86.1%	0.0%	0.0%	72.4%
<b>Office Equipment</b>										
Stolen	\$0	\$0	\$1,696	\$890	\$0	\$38,760	\$2,156	\$0	\$0	\$0
Recovered	\$0	\$0	\$0	\$150	\$0	\$0	\$0	\$0	\$0	\$0
% Recovered	0.0%	0.0%	0.0%	16.9%	0.0%	0.0%	0.0%	0.0%	0.0%	0.0%
<b>TV, VCR, Camera, Etc.</b>										
Stolen	\$0	\$0	\$171,308	\$2,650	\$0	\$98,960	\$36,678	\$0	\$0	\$12,675
Recovered	\$0	\$0	\$5,792	\$1,600	\$0	\$1,038	\$940	\$0	\$0	\$0
% Recovered	0.0%	0.0%	3.4%	60.4%	0.0%	1.0%	2.6%	0.0%	0.0%	0.0%
<b>Firearm</b>										
Stolen	\$0	\$0	\$14,985	\$3,500	\$0	\$7,789	\$7,390	\$0	\$0	\$0
Recovered	\$0	\$0	\$4,010	\$1,500	\$0	\$500	\$320	\$0	\$0	\$0
% Recovered	0.0%	0.0%	26.8%	42.9%	0.0%	6.4%	4.3%	0.0%	0.0%	0.0%
<b>Household Goods</b>										
Stolen	\$750	\$0	\$16,505	\$4,025	\$0	\$2,005	\$71,508	\$0	\$0	\$0
Recovered	\$150	\$0	\$0	\$1,085	\$0	\$0	\$430	\$0	\$0	\$0
% Recovered	20.0%	0.0%	0.0%	27.0%	0.0%	0.0%	0.6%	0.0%	0.0%	0.0%
<b>Consumable Goods</b>										
Stolen	\$1	\$0	\$3,500	\$25	\$20	\$2,464	\$1,368	\$0	\$0	\$100
Recovered	\$0	\$0	\$500	\$0	\$0	\$232	\$118	\$0	\$0	\$0
% Recovered	0.0%	0.0%	14.3%	0.0%	0.0%	9.4%	8.6%	0.0%	0.0%	0.0%
<b>Livestock</b>										
Stolen	\$0	\$0	\$0	\$0	\$0	\$0	\$0	\$0	\$0	\$0
Recovered	\$0	\$0	\$0	\$0	\$0	\$0	\$0	\$0	\$0	\$0
% Recovered	0.0%	0.0%	0.0%	0.0%	0.0%	0.0%	0.0%	0.0%	0.0%	0.0%
<b>Misc.</b>										
Stolen	\$1,700	\$158	\$616,406	\$10,028	\$3,825	\$375,614	\$85,906	\$506	\$136	\$5,511
Recovered	\$0	\$158	\$5,687	\$5,264	\$3,225	\$8,339	\$3,015	\$0	\$0	\$859
% Recovered	0.0%	100.0%	0.9%	52.5%	84.3%	2.2%	3.5%	0.0%	0.0%	15.6%
<b>TOTALS</b>										
Stolen	\$6,461	\$458	\$2,191,034	\$39,321	\$5,865	\$1,574,193	\$812,421	\$726	\$306	\$38,438
Recovered	\$13,760	\$308	\$1,101,418	\$16,599	\$3,245	\$611,422	\$484,788	\$60	\$0	\$14,359
% Recovered	213.0%	67.2%	50.3%	42.2%	55.3%	38.8%	59.7%	8.3%	0.0%	37.4%

# Stolen/Recovered Property Report

## OCTOBER 2003

Property Type	UNR PD	Washoe SO	Washoe Co Schl PD	Wendover PD	White Pine SO	Winnemucca PD	Yerington PD	Total By Property
<b>Currency</b>								
Stolen	\$797	\$38,342	\$214	\$10,020	\$520	\$374	\$0	\$1,405,815
Recovered	\$0	\$0	\$0	\$0	\$400	\$0	\$0	\$101,496
% Recovered	0.0%	0.0%	0.0%	0.0%	76.9%	0.0%	0.0%	7.2%
<b>Jewelry</b>								
Stolen	\$0	\$69,983	\$0	\$0	\$0	\$500	\$0	\$3,192,836
Recovered	\$0	\$0	\$0	\$0	\$0	\$0	\$0	\$144,380
% Recovered	0.0%	0.0%	0.0%	0.0%	0.0%	0.0%	0.0%	4.5%
<b>Clothing</b>								
Stolen	\$0	\$30	\$400	\$20	\$0	\$0	\$0	\$336,125
Recovered	\$0	\$0	\$0	\$0	\$0	\$0	\$0	\$48,942
% Recovered	0.0%	0.0%	0.0%	0.0%	0.0%	0.0%	0.0%	14.6%
<b>Motor Vehicle</b>								
Stolen	\$10,100	\$70,601	\$0	\$0	\$1,000	\$0	\$0	\$10,148,705
Recovered	\$10,100	\$24,001	\$0	\$0	\$1,000	\$0	\$0	\$5,621,877
% Recovered	100.0%	34.0%	0.0%	0.0%	100.0%	0.0%	0.0%	55.4%
<b>Office Equipment</b>								
Stolen	\$5,000	\$6,922	\$1,340	\$0	\$1,128	\$0	\$0	\$795,042
Recovered	\$0	\$10,500	\$250	\$0	\$479	\$0	\$0	\$31,299
% Recovered	0.0%	151.7%	18.7%	0.0%	42.5%	0.0%	0.0%	3.9%
<b>TV, VCR, Camera, Etc.</b>								
Stolen	\$2,364	\$4,539	\$1,550	\$900	\$0	\$950	\$0	\$1,443,330
Recovered	\$0	\$0	\$0	\$100	\$0	\$0	\$0	\$26,717
% Recovered	0.0%	0.0%	0.0%	11.1%	0.0%	0.0%	0.0%	1.9%
<b>Firearm</b>								
Stolen	\$0	\$680	\$0	\$0	\$0	\$0	\$2,000	\$109,601
Recovered	\$0	\$400	\$0	\$0	\$0	\$0	\$0	\$11,960
% Recovered	0.0%	58.8%	0.0%	0.0%	0.0%	0.0%	0.0%	10.9%
<b>Household Goods</b>								
Stolen	\$0	\$3,369	\$0	\$93	\$0	\$85	\$2,643	\$258,870
Recovered	\$0	\$0	\$0	\$93	\$0	\$0	\$0	\$3,444
% Recovered	0.0%	0.0%	0.0%	100.0%	0.0%	0.0%	0.0%	1.3%
<b>Consumable Goods</b>								
Stolen	\$0	\$58	\$0	\$94	\$70	\$9	\$47	\$56,333
Recovered	\$0	\$0	\$0	\$94	\$0	\$9	\$12	\$16,284
% Recovered	0.0%	0.0%	0.0%	100.0%	0.0%	100.0%	25.5%	28.9%
<b>Livestock</b>								
Stolen	\$0	\$0	\$0	\$0	\$0	\$0	\$0	\$3,730
Recovered	\$0	\$0	\$0	\$0	\$0	\$0	\$0	\$30
% Recovered	0.0%	0.0%	0.0%	0.0%	0.0%	0.0%	0.0%	0.8%
<b>Misc.</b>								
Stolen	\$4,238	\$57,546	\$4,616	\$190	\$3,274	\$1,460	\$305	\$4,498,941
Recovered	\$580	\$550	\$1,640	\$50	\$250	\$155	\$0	\$226,184
% Recovered	13.7%	1.0%	35.5%	0.0%	7.6%	10.6%	0.0%	5.0%
<b>TOTALS</b>								
Stolen	\$22,499	\$252,070	\$8,120	\$11,317	\$5,992	\$3,378	\$4,995	\$22,249,328
Recovered	\$10,680	\$35,451	\$1,890	\$337	\$2,129	\$164	\$12	\$6,232,613
% Recovered	47.5%	14.1%	23.3%	3.0%	35.5%	4.9%	0.2%	28.0%

**Nevada--Assaults on Officers by Agency--UCR**

**OCTOBER 2003**

Agency	OCTOBER 2003 Offenses	OCTOBER 2003 Cleared	2003 YTD Offenses	2003 YTD Cleared	OCTOBER 2002 Offenses	OCTOBER 2002 Cleared	2002 YTD Offenses	2002 YTD Cleared
Boulder	0	0	0	0	0	0	0	0
Carlin PD	0	0	0	0	0	0	3	3
Carson SO	1	1	10	10	0	0	9	8
Churchill SO	1	1	8	8	0	0	3	3
CirkSchIDst PD	0	0	0	0	0	0	0	0
Douglas SO	0	0	7	7	0	0	5	5
Elko PD	0	0	7	6	1	1	4	4
Elko SO	0	0	0	0	0	0	0	0
Esmeralda SO	0	0	0	0	0	0	0	0
Eureka SO	0	0	0	0	0	0	0	0
Fallon PD	0	0	0	0	0	0	0	0
Henderson PD	1	1	11	11	1	1	24	24
Highway Patrol	4	4	24	22	0	0	18	18
Humboldt SO	0	0	3	3	0	0	3	3
Lander SO	0	0	0	0	0	0	0	0
Lincoln SO	0	0	0	0	0	0	0	0
Lovelock PD	0	0	0	0	0	0	0	0
LV Fire Dept	0	0	0	0	0	0	0	0
LV Metro	28	27	270	269	31	31	254	254
Lyon SO	1	1	5	5	1	1	5	5
Mesquite PD	0	0	0	0	0	0	0	0
Mineral SO	0	0	0	0	0	0	3	3
NV Div Investigations	0	0	0	0	0	0	0	0
NLVPD	5	4	58	54	2	2	61	61
Nye SO	1	1	9	9	1	1	13	13
Pershing SO	0	0	0	0	0	0	0	0
Reno PD	0	0	13	12	1	1	4	4
Sparks PD	0	0	10	10	1	1	4	4
Storey SO	0	0	0	0	0	0	0	0
TMCC PD	0	0	0	0	0	0	0	0
UNLV PD	0	0	7	7	2	2	3	3
UNR PD	0	0	0	0	0	0	0	0
Washoe SO	0	0	2	2	0	0	14	12
Washoe Co Schl PD	0	0	0	0	0	0	3	3
Wendover PD	0	0	3	3	0	0	1	1
White Pine SO	0	0	0	0	0	0	1	1
Winnemucca PD	0	0	1	1	0	0	3	3
Yerington PD	0	0	0	0	0	0	0	0
<b>TOTALS</b>	<b>42</b>	<b>40</b>	<b>448</b>	<b>439</b>	<b>41</b>	<b>41</b>	<b>438</b>	<b>435</b>

**Nevada -- Assaults by Agency/Weapon/Assignment -- UCR**

**OCTOBER 2003**

Table 16

Agency	Total Assaults	Number Cleared	Firearm	Knife / Cutting Device	Other Danger. Weapon	Hands, Fists, Feet, Etc.	2-Officer Vehicle	1-Officer Vehicle- Alone	1-Officer Vehicle- Assisted	Det./Spec. Assign. - Alone	Det./Spec. Assign. - Assisted	Other- Alone	Other- Assisted
Boulder City PD	0	0	0	0	0	0	0	0	0	0	0	0	0
Carlin PD	0	0	0	0	0	0	0	0	0	0	0	0	0
Carson City SO	1	1	0	0	0	1	0	0	1	0	0	0	0
Churchill Co SO	1	1	0	0	0	1	0	0	0	0	0	0	1
Clark School Dist PD	0	0	0	0	0	0	0	0	0	0	0	0	0
Douglas Co SO	0	0	0	0	0	0	0	0	0	0	0	0	0
Elko PD	0	0	0	0	0	0	0	0	0	0	0	0	0
Elko Co SO	0	0	0	0	0	0	0	0	0	0	0	0	0
Esmeralda Co SO	0	0	0	0	0	0	0	0	0	0	0	0	0
Eureka Co SO	0	0	0	0	0	0	0	0	0	0	0	0	0
Fallon PD	0	0	0	0	0	0	0	0	0	0	0	0	0
Henderson PD	1	1	0	0	0	1	1	0	0	0	0	0	0
NV Highway Patrol	4	4	0	0	0	4	0	0	4	0	0	0	0
Humboldt Co SO	0	0	0	0	0	0	0	0	0	0	0	0	0
Lander Co SO	0	0	0	0	0	0	0	0	0	0	0	0	0
Lincoln Co SO	0	0	0	0	0	0	0	0	0	0	0	0	0
Lovelock PD	0	0	0	0	0	0	0	0	0	0	0	0	0
Las Vegas Fire Dept	0	0	0	0	0	0	0	0	0	0	0	0	0
Las Vegas Metro PD	28	27	5	0	3	20	4	10	9	0	4	1	0
Lyon Co SO	1	1	0	0	0	1	0	1	0	0	0	0	0
Mesquite PD	0	0	0	0	0	0	0	0	0	0	0	0	0
Mineral Co SO	0	0	0	0	0	0	0	0	0	0	0	0	0
NV Div of Investigations	0	0	0	0	0	0	0	0	0	0	0	0	0
North Las Vegas PD	5	4	0	0	0	5	1	1	3	0	0	0	0
Nye Co SO	1	1	0	0	0	1	0	1	0	0	0	0	0
Pershing Co SO	0	0	0	0	0	0	0	0	0	0	0	0	0
Reno PD	0	0	0	0	0	0	0	0	0	0	0	0	0
Sparks PD	0	0	0	0	0	0	0	0	0	0	0	0	0
Storey Co SO	0	0	0	0	0	0	0	0	0	0	0	0	0
TMCC PD	0	0	0	0	0	0	0	0	0	0	0	0	0
UNLV PD	0	0	0	0	0	0	0	0	0	0	0	0	0
UNR PD	0	0	0	0	0	0	0	0	0	0	0	0	0
Washoe Co SO	0	0	0	0	0	0	0	0	0	0	0	0	0
Washoe Co School PD	0	0	0	0	0	0	0	0	0	0	0	0	0
West Wendover PD	0	0	0	0	0	0	0	0	0	0	0	0	0
White Pine Co SO	0	0	0	0	0	0	0	0	0	0	0	0	0
Winnemucca PD	0	0	0	0	0	0	0	0	0	0	0	0	0
Yerington PD	0	0	0	0	0	0	0	0	0	0	0	0	0
<b>TOTALS</b>	<b>42</b>	<b>40</b>	<b>5</b>	<b>0</b>	<b>3</b>	<b>34</b>	<b>6</b>	<b>13</b>	<b>17</b>	<b>0</b>	<b>4</b>	<b>1</b>	<b>1</b>

28

## Nevada--Assaults with Injury/without Injury--UCR

### OCTOBER 2003

Agency	Total		Firearm		Cutting Instruments		Other Dangerous weapons		Hands, Fists, Feet, Etc.		
	Assaults by weapon	With personal injury	Without personal injury	With personal injury	Without personal injury	With personal injury	Without personal injury	With personal injury	Without personal injury	With personal injury	
Boulder City PD	0	0	0	0	0	0	0	0	0	0	
Carlin PD	0	0	0	0	0	0	0	0	0	0	
Carson City SO	1	0	1	0	0	0	0	0	0	1	
Churchill Co SO	1	0	1	0	0	0	0	0	0	1	
Clark Co Schl Dist PD	0	0	0	0	0	0	0	0	0	0	
Douglas Co SO	0	0	0	0	0	0	0	0	0	0	
Elko Co SO	0	0	0	0	0	0	0	0	0	0	
Elko PD	0	0	0	0	0	0	0	0	0	0	
Esmeralda Co SO	0	0	0	0	0	0	0	0	0	0	
Eureka Co SO	0	0	0	0	0	0	0	0	0	0	
Fallon PD	0	0	0	0	0	0	0	0	0	0	
Henderson PD	1	0	1	0	0	0	0	0	0	1	
NV Highway Patrol	4	0	4	0	0	0	0	0	0	4	
Humboldt Co SO	0	0	0	0	0	0	0	0	0	0	
Lander Co SO	0	0	0	0	0	0	0	0	0	0	
Las Vegas Metro PD	28	3	25	0	5	0	0	0	3	3	17
Lincoln Co SO	0	0	0	0	0	0	0	0	0	0	0
Lovelock PD	0	0	0	0	0	0	0	0	0	0	0
Lyon Co SO	1	0	1	0	0	0	0	0	0	0	1
Mesquite PD	0	0	0	0	0	0	0	0	0	0	0
Mineral Co SO	0	0	0	0	0	0	0	0	0	0	0
NV Div Investigations	0	0	0	0	0	0	0	0	0	0	0
North Las Vegas PD	5	0	5	0	0	0	0	0	0	0	5
Nye Co SO	0	0	0	0	0	0	0	0	0	0	0
Pershing Co SO	0	0	0	0	0	0	0	0	0	0	0
Reno PD	0	0	0	0	0	0	0	0	0	0	0
Sparks PD	0	0	0	0	0	0	0	0	0	0	0
Storey Co SO	0	0	0	0	0	0	0	0	0	0	0
TMCC PD	0	0	0	0	0	0	0	0	0	0	0
UNLV PD	0	0	0	0	0	0	0	0	0	0	0
UNR PD	0	0	0	0	0	0	0	0	0	0	0
Washoe Co SO	0	0	0	0	0	0	0	0	0	0	0
Washoe Co School Dist.	0	0	0	0	0	0	0	0	0	0	0
West Wendover PD	0	0	0	0	0	0	0	0	0	0	0
White Pine Co SO	0	0	0	0	0	0	0	0	0	0	0
Winnemucca PD	0	0	0	0	0	0	0	0	0	0	0
Yerington PD	0	0	0	0	0	0	0	0	0	0	0
<b>Totals</b>	<b>41</b>	<b>3</b>	<b>38</b>	<b>0</b>	<b>5</b>	<b>0</b>	<b>0</b>	<b>0</b>	<b>3</b>	<b>3</b>	<b>30</b>

## Nevada--Time of Assaults on Officers--UCR

### OCTOBER 2003

Agency	2:00 AM	4:00 AM	6:00 AM	8:00 AM	10:00 AM	12:00 AM	12:01- 2:00 PM	2:00- 4:00 PM	4:00- 6:00 PM	6:00- 8:00 PM	10:00 PM	10:00- 12:00 PM
Boulder City PD	0	0	0	0	0	0	0	0	0	0	0	0
Carlin PD	0	0	0	0	0	0	0	0	0	0	0	0
Carson City SO	0	0	0	0	0	0	0	1	0	0	0	0
Churchill Co SO	1	0	0	0	0	0	0	0	0	0	0	0
Clark Co Schl Dist PD	0	0	0	0	0	0	0	0	0	0	0	0
Douglas Co SO	0	0	0	0	0	0	0	0	0	0	0	0
Elko Co SO	0	0	0	0	0	0	0	0	0	0	0	0
Elko PD	0	0	0	0	0	0	0	0	0	0	0	0
Esmeralda Co SO	0	0	0	0	0	0	0	0	0	0	0	0
Eureka Co SO	0	0	0	0	0	0	0	0	0	0	0	0
Fallon PD	0	0	0	0	0	0	0	0	0	0	0	0
Henderson PD	0	0	0	0	0	0	0	0	0	0	0	1
Highway Patrol	0	0	0	0	0	0	0	2	0	2	0	0
Humbolt Co SO	0	0	0	0	0	0	0	0	0	0	0	0
Lander Co SO	0	0	0	0	0	0	0	0	0	0	0	0
Las Vegas Metro PD	6	1	0	2	0	2	4	2	2	3	0	6
Lincoln Co SO	0	0	0	0	0	0	0	0	0	0	0	0
Lovelock PD	0	0	0	0	0	0	0	0	0	0	0	0
Lyon Co SO	0	1	0	0	0	0	0	0	0	0	0	0
Mesquite PD	0	0	0	0	0	0	0	0	0	0	0	0
Mineral Co SO	0	0	0	0	0	0	0	0	0	0	0	0
NV Div Investigations	0	0	0	0	0	0	0	0	0	0	0	0
North LV PD	0	0	0	0	0	0	1	0	2	0	1	1
Nye Co SO	1	0	0	0	0	0	0	0	0	0	0	0
Pershing Co SO	0	0	0	0	0	0	0	0	0	0	0	0
Reno PD	0	0	0	0	0	0	0	0	0	0	0	0
Sparks PD	0	0	0	0	0	0	0	0	0	0	0	0
Storey Co SO	0	0	0	0	0	0	0	0	0	0	0	0
TMCC PD	0	0	0	0	0	0	0	0	0	0	0	0
UNLV PD	0	0	0	0	0	0	0	0	0	0	0	0
UNR PD	0	0	0	0	0	0	0	0	0	0	0	0
Washoe Co SO	0	0	0	0	0	0	0	0	0	0	0	0
Washoe Co Schl PD	0	0	0	0	0	0	0	0	0	0	0	0
West Wendover PD	0	0	0	0	0	0	0	0	0	0	0	0
White Pine Co SO	0	0	0	0	0	0	0	0	0	0	0	0
Winnemucca PD	0	0	0	0	0	0	0	0	0	0	0	0
Yerington PD	0	0	0	0	0	0	0	0	0	0	0	0
<b>Totals</b>	<b>8</b>	<b>2</b>	<b>0</b>	<b>2</b>	<b>0</b>	<b>2</b>	<b>5</b>	<b>5</b>	<b>4</b>	<b>5</b>	<b>1</b>	<b>8</b>

# Nevada -- Division Of Investigations

## Arrests for Narcotics Violations

October 2003

		10-	13-											23-	25-	30-	35-	40-	45-	50-	55-	60-		Total	W	B	A	I																
		<10	12	14	15	16	17	18	19	20	21	22	24	29	34	39	44	49	54	59	64	>64																						
<b>SALES/MANUFACTURING VIOLATIONS</b>																																												
Opium or cocaine and their derivatives (morphine, heroin, codeine)	M																				1			1	1											3								
	F																																											
Marijuana	M																				1		1		1	1	2		1											8				
	F																																											
Synthetic narcotics- Manufactured narcotics that can cause true drug addiction (demerol, meth)	M																																											
	F																																											
Other dangerous, non-narcotic, drugs (barbituates, benzderine)	M					1		1	2	1	1		2	2	3	1	2				1						17	15	1															
	F																				1			1		2	1	1											6	5			1	
Sub-Total	M	0	0	0	0	1	0	2	3	2	1	0	3	4	6	1	3	0	1	1	0	0	28	26	1	0	1																	
	F	0	0	0	0	0	0	0	1	0	0	0	0	0	1	0	0	2	1	1	0	0	6	5	0	0	1																	
<b>POSSESSION VIOLATIONS</b>																																												
Opium or cocaine and their derivatives (morphine, heroin, codeine)	M																																											
	F																																											
Marijuana	M					1		1											1		1											4	3			1								
	F																																											
Synthetic narcotics- Manufactured narcotics that can cause true drug addiction (demerol, meth)	M																																											
	F																																											
Other dangerous, non-narcotic, drugs (barbituates, benzderine)	M																						1											1										
	F																						1				1											2	2			1		
Sub-Total	M	0	0	0	0	1	0	1	0	0	0	0	2	0	1	0	0	0	0	0	0	0	5	3	1	0	0																	
	F	0	0	0	0	0	0	0	0	0	0	0	0	1	0	0	0	0	0	1	0	0	2	2	0	0	1																	
<b>Total</b>		0	0	0	0	2	0	3	4	2	1	0	3	6	8	2	3	2	2	3	0	0	41	36	2	0	3																	

Nevada UCR  
\*Footnotes / Exceptions

---

**OCTOBER 2003**

---

Table 1

--Nevada figures are annualized projections.

--"Assault" does not include simple assaults to allow direct comparison between the Nevada rate and the National rate for this Index offense. See Table 8 for a count of all assaults.

Table 2

--The LV Fire Department reports "Arson" offenses for the City of Las Vegas. The population figure for this agency represents jurisdiction and is not added to the county total. Similarly, the School District Police Departments in Clark and Washoe Counties are not added to county population estimates as they represent persons served (student enrollment plus staff.)

--Assault data in this table includes ALL assaults (aggravated and simple) reported for the current month.

--County crime rates are calculated following subtraction of populations of jurisdictions failing to report.

Table 3

-- In the "Nevada vs National Index Crime and Clearance Rates" sections, the "Assaults" numbers do not include simple assaults following FBI guidelines. Therefore, they may be compared directly to National rates.

-- National crime rate figures are the latest available for comparative use (2000). Nevada figures are annualized projections.

Table 13

--At various times, property values recovered will exceed values stolen for the current reporting period.

**General Notes:**

■ The following agency(ies) was unable to submit reports for this month:

-- Any late reports not submitted in time for this publication will be incorporated in to the year-to-date totals in subsequent reports.