

Disclaimer: The following information is preliminary and cannot be certified until it is published in the annual report, Crime and Justice in Nevada, which will be available after July 1, 2004.

Department of Public Safety
Nevada Highway Patrol
Records and Identification Bureau

Monthly Report



NOVEMBER

2003

**George Togliatti, Director
Department of Public Safety**

**Colonel David Hosmer, Chief
Nevada Highway Patrol**

**Daryl Riersgard, Manager
Records and Identification Bureau**

**Phyllis Yancey, Administrative Assistant II
Tenna Herman, Management Analyst I**

**Prepared by:
Records and Identification Bureau
Uniform Crime Reporting
808 W. Nye Lane
Carson City, Nevada 89703
(775) 687-1600**

Nevada UCR Definitions / Explanations

Uniform Crime Reporting Program

The UCR program is a nationwide, cooperative, statistical effort by over 17,000 city, county and state law enforcement agencies that voluntarily report data on crimes brought to their attention. Law enforcement agencies active in the national program represent 95% of the total population of the United States. While the program's primary objective is to generate a reliable set of crime statistics for use in law enforcement administration, operation and management, its data has over the years become one of the country's leading social indicators.

In Nevada, 36 agencies are currently reporting UCR data to the statewide program representing nearly 99% of its population. Rather than submitting directly to the FBI, local agencies must submit crime data to the state UCR Repository, which compiles, analyzes and submits copies of the reports to the FBI. The Nevada UCR Program prides itself on its responsiveness to local contributing agencies that previously received limited feedback for their efforts. The Nevada program is also responsible for producing and distributing periodic reports of the information contained in its database. As its database has grown, the program's utility has become even more apparent.

Eight offenses serve as an index for gauging fluctuations in overall volumes and rates of crime. Known collectively as the " Crime Index, " these offenses include *the violent crimes of murder, rape, robbery and assault and the property crimes of burglary, larceny, motor vehicle theft and arson*. These offenses were selected as a grouped measuring device because they represent the most common crime problems. They are all serious crimes; either by their very nature or due to the volume and frequency with which they occur.

Index Crimes Definitions

Murder and Non-negligent Manslaughter

Murder and non negligent manslaughter, as defined in the Uniform Crime Reporting Program, is the willful (non-negligent) killing of a human being by another.

The classification of this offense, as for all other Crime Index offenses, is based solely on police investigation as opposed to the determination of a court, medical examiner, coroner, jury or other judicial entity. Not included in the count for this offense classification are deaths caused by negligence, suicide or accident, justifiable homicides and attempts to murder or assaults to murder. These are scored as aggravated assaults.

Nevada UCR Definitions / Explanations

Forcible Rape

Forcible rape, as defined in the program, is the carnal knowledge of a female forcibly and against her will. Assaults or attempts to commit rape by force or threat of force are also included; however, statutory rape (without force) and other sex offenses are excluded.

Robbery

Robbery is the taking or attempting to take anything of value from the care, custody or control of a person or persons by force or threat of force or violence and/or by putting the victim in fear.

Aggravated Assault

Aggravated assault is an unlawful attack by one person upon another for the purpose of inflicting severe or aggravated bodily injury. This type of assault is usually accompanied by the use of a weapon or by means likely to produce death or great bodily harm. Attempts are included since it is not necessary that an injury result when a gun, knife or other weapon is used which could and probably would result in serious personal injury if the crime were successfully completed

Burglary

The Uniform Crime Reporting Program defines burglary as the unlawful entry of a structure to commit a felony or theft. The use of force to gain entry is not required to classify an offense as burglary. Burglary in this program is categorized into three sub classifications: forcible entry, unlawful entry where no force is used and attempted forcible entry.

Larceny-Theft

Larceny-theft is the unlawful taking, carrying, leading, or riding away of property from the possession or constructive possession of another. It includes crimes such as shoplifting, pocket picking, purse-snatching, thefts from motor vehicles, thefts of motor vehicle parts and accessories, and bicycle thefts, etc., in which no use of force, violence, or fraud occurs. In the UCR Program, this crime category does not include embezzlement, "con" games, forgery, and worthless checks. Motor vehicle theft is also excluded from this category inasmuch as it is a separate Crime Index offense.

Motor Vehicle Theft

Defined as the theft or attempted theft of a motor vehicle, this offense category includes the stealing of automobiles, trucks, buses, motorcycles, motor scooters, snowmobiles, etc. The definition excludes the taking of a motor vehicle for temporary use by those persons having lawful access.

Nevada UCR

Definitions / Explanations

Arson

Arson is defined by the Uniform Crime Reporting Program as any willful or malicious burning or attempt to burn, with or without intent to defraud, a dwelling house, public building, a motor vehicle or aircraft, personal property of another, etc. Only fires determined through investigation to have been willfully or maliciously set are classified as arsons. Fires of suspicious or unknown origins are excluded.

Population Estimates

State, county and incorporated city population estimates are prepared and reviewed prior to the end of each calendar year for certification by the governor by March 1. The Nevada Department of Taxation and Nevada State Demographer, Bureau of Business and Economic Research, College of Business Administration, University of Nevada, Reno, prepares these estimates.

Crime Rates

Crime rates involve the number of Index Crimes per unit of population, usually per 100,000 persons. Because Nevada has such a low population, a rate per 1,000 persons is used to reflect a more realistic volume. No attempt is made to incorporate transient populations or other factors that contribute to the ratio and types of crime in given areas. Any effort to make comparisons of crime rates between areas should be tempered by these population and environmental variables.

Crime rates are one of the most meaningful statistical elements. Computation of crime rates per 1,000 population is achieved by dividing the community's population by 1,000, then dividing the number of offenses in each class by that number. The answer is the number of offenses per 1,000 population and is the crime rate for that particular offense. In Table 2, the County Total Crime Rate is computed after subtracting the population figure for all non-reporting agencies for the current month.

The index offense "Aggravated Assault" is an item of special interest to users of Nevada's UCR report. In Tables 1 & 3, where Nevada and National crime rates are compared, "simple assaults" are subtracted from the total of all assaults following FBI UCR rules, thus allowing for direct comparison. However, total assaults (simple and aggravated) are also presented in the Nevada report. This is because the Nevada UCR staff believes this figure is an important indicator of risk for citizens and it presents a more balanced picture of this portion of the crime index to law enforcement personnel.

The Federal Bureau of Investigation, Uniform Crime Reporting Section, publishes national rates.

Clearance Rates

The percentage of crimes cleared is obtained by dividing the number of offenses cleared by the number of offenses known. This number is then multiplied by 100.

Nevada--Statewide Summary--UCR Index Crimes

NOVEMBER 2003

Offense	Crimes this Month	# Cleared this Month	% Cleared this Month	Crimes this YTD	# Cleared this YTD	% Cleared this YTD	NOVEMBER 2002			2003 NV Rate / 1,000 (Proj) *	2002 NV Rate / 1,000	2001 Natl. Rate / 1,000
							NOVEMBER Crimes 2002	NOVEMBER Cleared 2002	% NOVEMBER Cleared 2002			
Murder	21	11	52	187	89	48	14	8	57	0.09	0.09	0.56
Rape	59	27	46	821	258	31	63	25	40	0.41	0.44	0.32
Robbery	466	65	14	4,738	926	20	437	97	22	2.34	2.40	1.48
Assault *	518	208	40	6,982	2,680	38	543	304	56	3.45	3.58	3.19
Burglary	1,646	366	22	20,041	4,441	22	1,721	379	22	9.91	8.89	7.41
Larceny	4,563	473	10	48,314	7,490	16	4,265	1,265	30	23.89	22.26	24.85
MV Theft	1,885	224	12	18,974	2,290	12	1,452	221	15	9.38	8.20	4.31
Arson	33	4	12	534	67	13	55	10	18	0.26	0.30	0.35
Total	9,191	1,378	15	100,591	18,241	18	8,550	2,309	27	49.74	46.14	42.47

* The projected Crime Rate for Assaults is computed after subtracting Simple Assaults from the total for all Assaults following FBI guidelines. Therefore, this rate may be compared directly to the National Rate. See Table 3 and the "Footnotes/Exceptions page for further information.

Nevada UCR - - Monthly Crime/ Clearance Summary - - All Crimes

Contributing Agency	Est. Pop	Murder		Rape		Robbery		Assault		Burglary		Larceny		MV Theft		Arson		Total Crimes	Crime Rate	Clearances	Clearance Rate
NOVEMBER 2003																					
Carson County																					
Carson SO	54,844	0	0	0	0	6	1	74	38	34	5	113	26	17	0	1	0	245	4.47	70	28.6%
County Total	54,844	0	0	0	0	6	1	74	38	34	5	113	26	17	0	1	0	245	4.47	70	28.6%
Churchill County																					
Churchill SO	16,939	0	0	1	1	0	0	28	27	9	1	11	6	0	0	0	0	49	2.89	35	71.4%
Fallon PD	8,178	0	0	0	0	1	0	24	16	7	1	42	10	2	1	0	0	76	9.29	28	36.8%
County Total	25,117	0	0	1	1	1	0	52	43	16	2	53	16	2	1	0	0	125	4.98	63	50.4%
Clark County																					
Boulder PD	14,842	0	0	0	0	1	0	0	0	11	1	4	0	1	0	0	0	17	1.15	1	5.9%
Clark Co. Schools PD*	284,512	0	0	0	0	5	2	72	44	31	5	118	8	6	0	4	1	236	0.83	60	25.4%
Henderson	209,486	2	1	10	9	13	3	183	94	121	25	240	46	110	5	3	0	682	3.26	183	26.8%
LV Metro PD	1,176,146	15	8	37	13	349	30	1,797	472	936	249	2,626	29	1,331	175	15	0	7,106	6.04	976	13.7%
LV Fire Dept*																3	1	3	N/A	1	33.3%
Mesquite	13,216	0	0	0	0	0	0	13	14	0	0	15	11	3	1	0	0	31	2.35	26	83.9%
North Las Vegas PD	135,967	1	0	1	1	30	4	210	123	115	7	212	62	155	10	2	0	726	5.34	207	28.5%
UNLV PD*	26,345	0	0	0	0	0	0	1	0	8	0	24	2	12	0	0	0	45	1.71	2	4.4%
County Total	1,549,657	18	9	48	23	398	39	2,276	747	1,222	287	3,239	158	1,618	191	27	2	8,846	5.71	1,456	16.5%
Douglas County																					
Douglas SO	44,212	0	0	0	0	1	1	47	35	18	6	57	13	3	3	1	0	127	2.87	58	45.7%
County Total	44,212	0	0	0	0	1	1	47	35	18	6	57	13	3	3	1	0	127	2.87	58	45.7%

*Population figure not included in county total
Table 2

Nevada UCR - - Monthly Crime/ Clearance Summary - - All Crimes

Contributing Agency	Est. Pop	Murder		Rape		Robbery		Assault		Burglary		Larceny		MV Theft		Arson		Total Crimes	Crime Rate	Clearances	Clearance Rate
NOVEMBER 2003																					
Elko County																					
Elko SO	23,153	0	0	1	1	0	0	3	2	6	2	2	2	1	0	1	0	14	0.60	7	50.0%
Carlin PD	2,074	0	0	0	0	0	0	6	6	0	0	2	0	1	1	0	0	9	4.34	7	77.8%
Elko PD	16,690	0	0	1	0	2	0	22	11	8	2	31	5	6	0	1	1	71	4.25	19	26.8%
WestWendover PD	4,661	0	0	0	0	0	0	6	5	3	2	23	15	1	1	1	1	34	7.29	24	70.6%
County Total	46,578	0	0	2	1	2	0	37	24	17	6	58	22	9	2	3	2	128	2.75	57	44.5%
Esmeralda County																					
Esmeralda SO	1,125	0	0	0	0	0	0	0	0	0	0	0	0	0	0	0	0	0	0.00	0	0.0%
County Total	1,125	0	0	0	0	0	0	0	0	0	0	0	0	0	0	0	0	0	0.00	0	0.0%
Eureka County																					
Eureka SO	1,384	0	0	0	0	0	0	1	0	0	0	2	1	0	0	0	0	3	2.17	1	33.3%
County Total	1,384	0	0	0	0	0	0	1	0	0	0	2	1	0	0	0	0	3	2.17	1	33.3%
Humboldt County																					
Humboldt SO	9,074	0	0	0	0	0	0	3	0	2	1	6	0	0	0	0	0	11	1.21	1	9.1%
Winnemucca PD	7,234	0	0	0	0	0	0	8	8	1	0	2	1	1	1	0	0	12	1.66	10	83.3%
County Total	16,308	0	0	0	0	0	0	11	8	3	1	8	1	1	1	0	0	23	1.41	11	47.8%

*Population figure not included in county total
Table 2

Nevada UCR - - Monthly Crime/ Clearance Summary - - All Crimes

Contributing Agency	Est. Pop	Murder		Rape		Robbery		Assault		Burglary		Larceny		MV Theft		Arson		Total Crimes	Crime Rate	Clearances	Clearance Rate
Lander County																		NOVEMBER 2003			
Lander SO	5,547	0	0	1	0	0	0	13	7	2	0	7	2	1	0	0	0	24	4.33	9	37.5%
County Total	5,547	0	0	1	0	0	0	13	7	2	0	7	2	1	0	0	0	24	4.33	9	37.5%
Lincoln County																					
Lincoln SO	3,879	0	0	0	0	0	0	2	2	1	0	2	0	2	1	0	0	7	1.80	3	42.9%
County Total	3,879	0	0	0	0	0	0	2	2	1	0	2	0	2	1	0	0	7	1.80	3	42.9%
Lyon County																					
Lyon SO	35,917	1	1	0	0	0	1	37	37	16	3	44	10	3	0	0	0	101	2.81	52	51.5%
Yerington PD	2,859	0	0	0	0	0	0	4	1	4	0	2	1	0	0	0	0	10	3.50	2	20.0%
County Total	38,776	1	1	0	0	0	1	41	38	20	3	46	11	3	0	0	0	111	2.86	54	48.6%
Mineral County																					
Mineral SO	4,695	0	0	0	0	0	0	0	0	4	1	0	0	0	0	0	0	4	0.85	1	25.0%
County Total	4,695	0	0	0	0	0	0	0	0	4	1	0	0	0	0	0	0	4	0.85	1	25.0%
Nye County																					
Nye SO	35,039	0	0	0	0	1	0	50	50	55	21	58	27	6	3	0	0	170	4.85	101	59.4%
County Total	35,039	0	0	0	0	1	0	50	50	55	21	58	27	6	3	0	0	170	4.85	101	59.4%

*Population figure not included in county total
Table 2

Nevada UCR - - Monthly Crime/ Clearance Summary - - All Crimes

Contributing Agency	Est. Pop	Murder		Rape		Robbery		Assault		Burglary		Larceny		MV Theft		Arson		Total Crimes	Crime Rate	Clearances	Clearance Rate
NOVEMBER 2003																					
Pershing County																					
Pershing SO	4,670	0	0	1	0	0	0	3	2	2	0	3	2	2	2	0	0	11	2.36	6	54.5%
Lovelock PD	2,267	0	0	0	0	0	0	1	1	2	0	5	2	0	0	0	0	8	3.53	3	37.5%
County Total	6,937	0	0	1	0	0	0	4	3	4	0	8	4	2	2	0	0	19	2.74	9	47.4%
Storey County																					
Storey	3,639	0	0	0	0	0	0	2	2	0	0	4	0	0	0	0	0	6	1.65	2	33.3%
County Total	3,639	0	0	0	0	0	0	2	2	0	0	4	0	0	0	0	0	6	1.65	2	33.3%
Washoe County																					
Washoe SO	96,334	1	1	0	0	1	1	66	48	32	3	85	8	19	1	1	0	205	2.13	62	30.2%
Reno PD	187,834	1	0	4	2	45	14	297	161	141	13	580	140	146	12	0	0	1,214	6.46	342	28.2%
Sparks PD	75,255	0	0	1	0	8	6	108	90	71	18	192	33	54	6	0	0	434	5.77	153	35.3%
UNR PD*	15,000	0	0	1	0	1	0	1	1	2	0	13	0	1	0	0	0	19	1.27	1	5.3%
Washoe Co Schi PD*	66,515	0	0	0	0	0	0	0	0	2	0	22	7	1	1	0	0	25	0.38	8	32.0%
TMCC PD*	11,878	0	0	0	0	0	0	1	1	0	0	2	0	0	0	0	0	3	0.25	1	33.3%
County Total	359,423	2	1	6	2	55	21	473	301	248	34	894	188	221	20	1	0	1,900	5.29	567	29.8%
White Pine County																					
White Pine SO	8,863	0	0	0	0	2	2	5	3	2	0	14	4	0	0	0	0	23	2.60	9	39.1%
County Total	8,863	0	0	0	0	2	2	5	3	2	0	14	4	0	0	0	0	23	2.60	9	39.1%
Grand Total	2,206,023	21	11	59	27	466	65	3,088	1,301	1,646	366	4,563	473	1,885	224	33	4	11,761	5.33	2,471	21.0%

*Population figure not included in county total
Table 2

Nevada UCR - - Monthly Crimes/Clearances Summary - - Index Crimes

NOVEMBER 2003

	Est. Pop	Murder		Rape		Robbery		Assault		Burglary		Larceny		MV Theft		Arson		Total Crimes	Crime Rate	Total Clear	Clearance Rate
Statewide Totals																					
(Crimes/Clearances)	2,206,023	21	11	59	27	466	65	518	208	1646	366	4563	473	1885	224	33	4	9191	4.17	1378	14.99

Nevada (Projected 2003) vs National (2001) Index Crime Rates

(per 1,000 population)

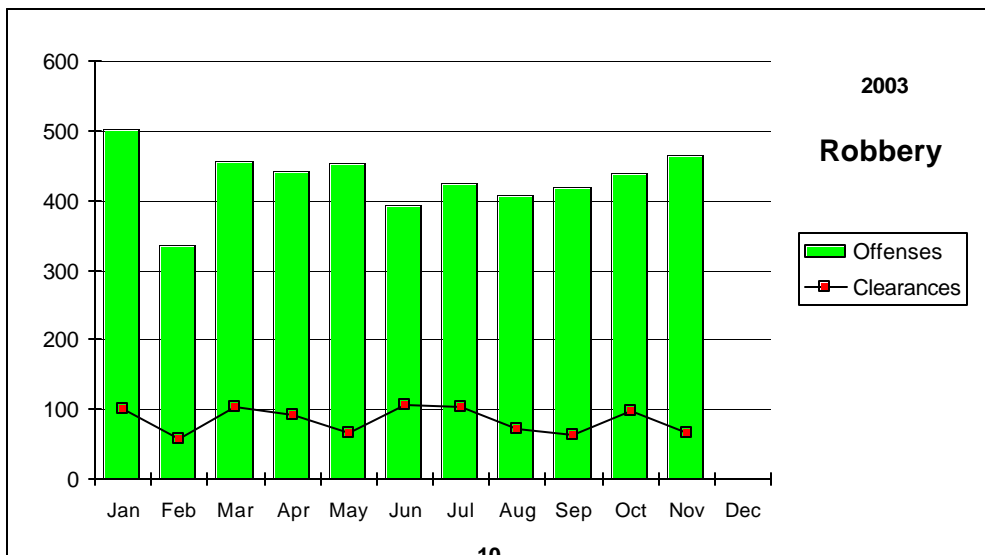
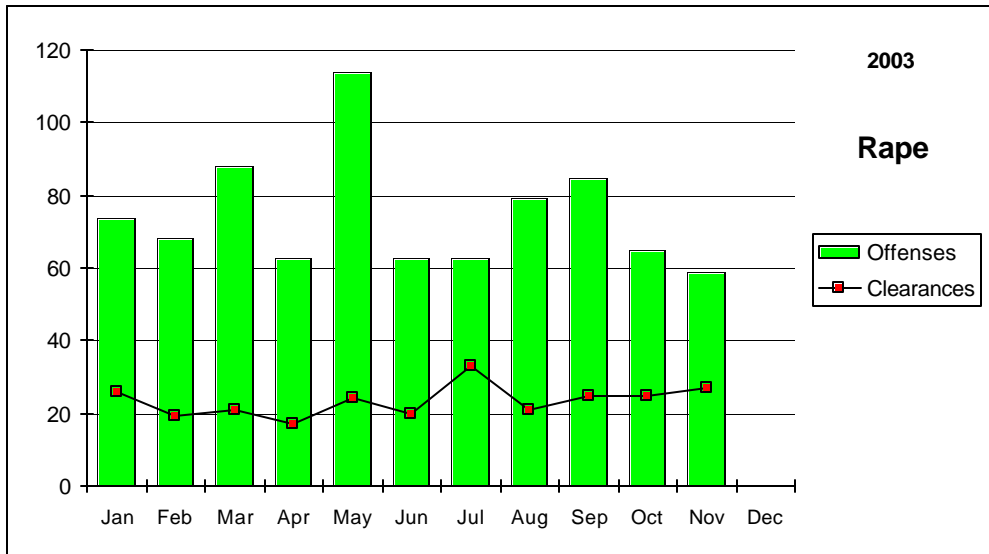
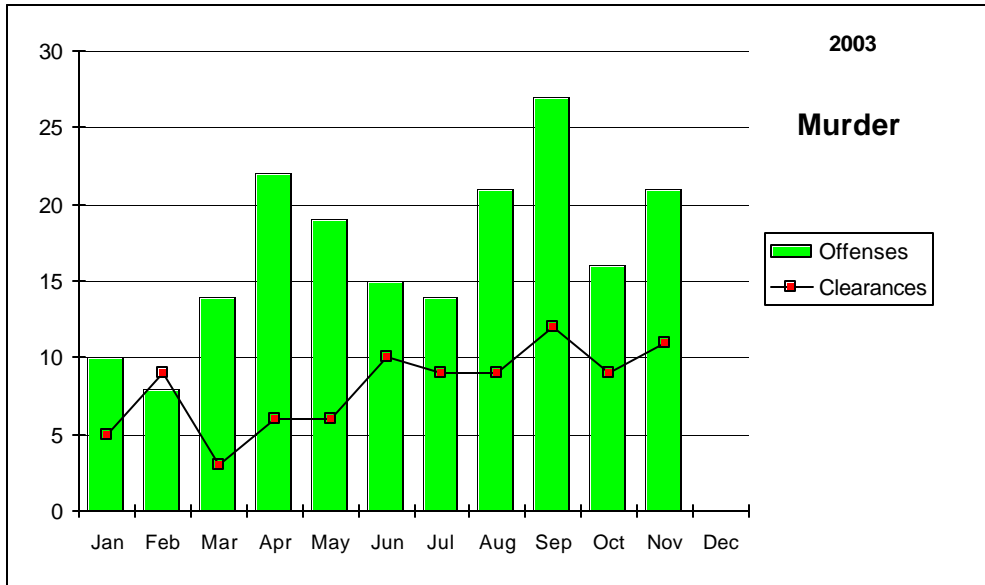
	Murder	Rape	Robbery	Assault	Burglary	Larceny	MV Theft	Arson	Crime Rate
Nevada	0.09	0.41	2.34	3.45	9.91	23.89	9.38	0.26	49.74
National	0.56	0.32	1.48	3.19	7.41	24.85	4.31	0.35	41.85

Nevada (Projected 2003) vs National (2001) Crime Clearance Rates

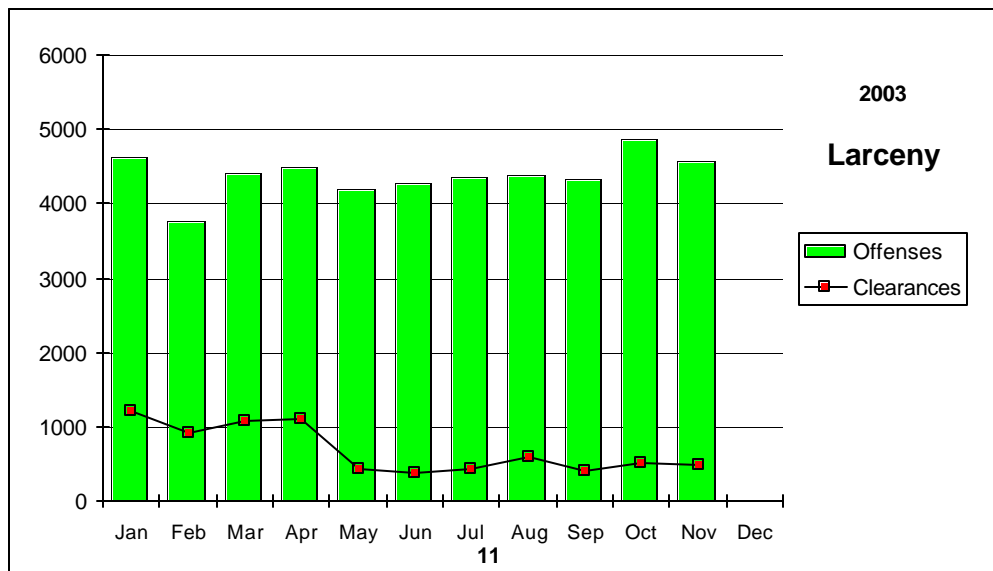
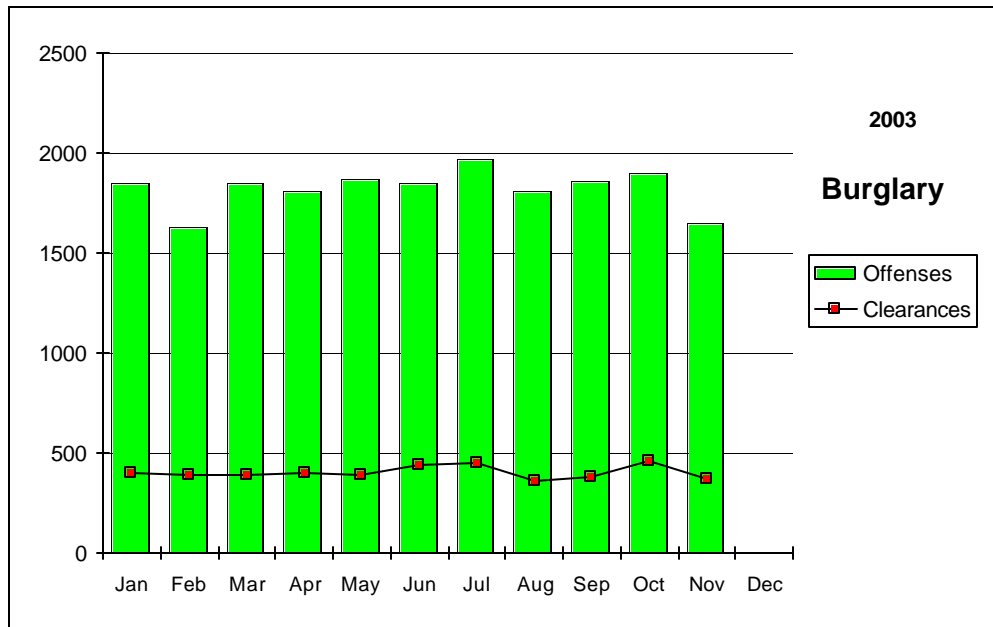
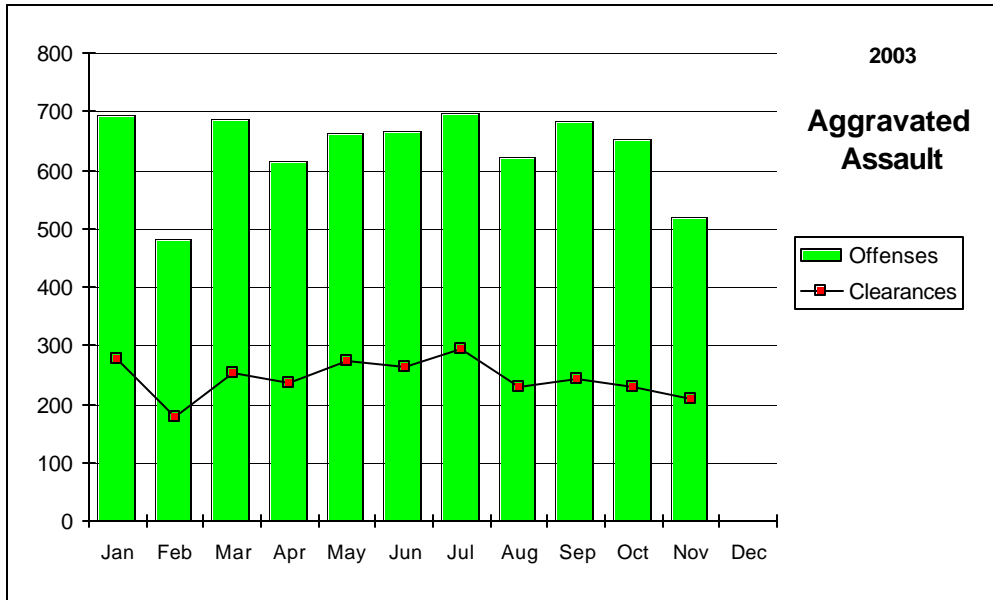
(by Percent)

	Murder	Rape	Robbery	Assault	Burglary	Larceny	MV Theft	Arson	Clear Rate
Nevada	47.59	31.43	19.54	38.38	22.16	15.50	12.07	12.55	18.45
National	62.40	44.30	24.90	56.10	12.70	17.60	13.60	16.00	19.60

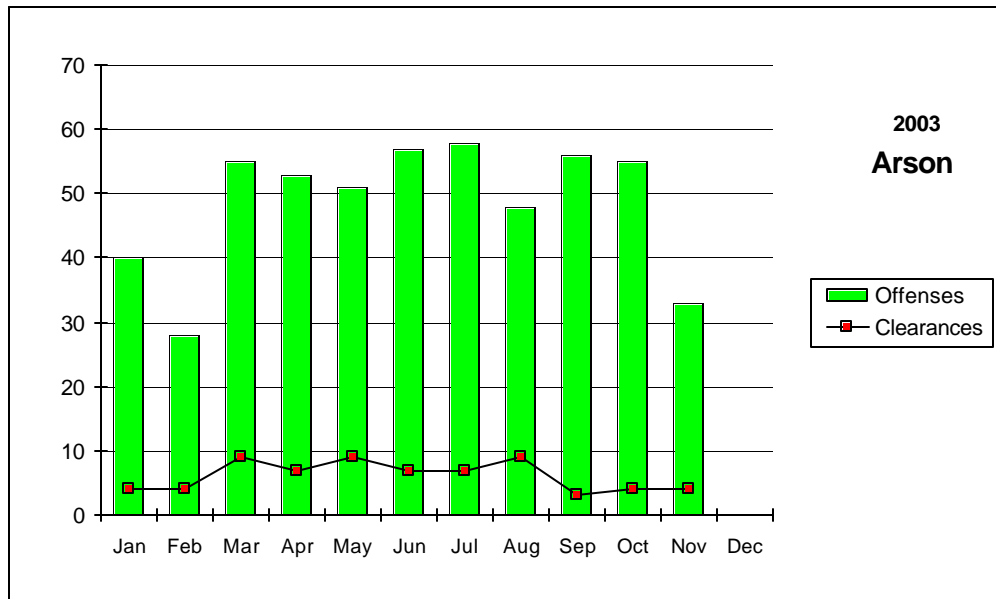
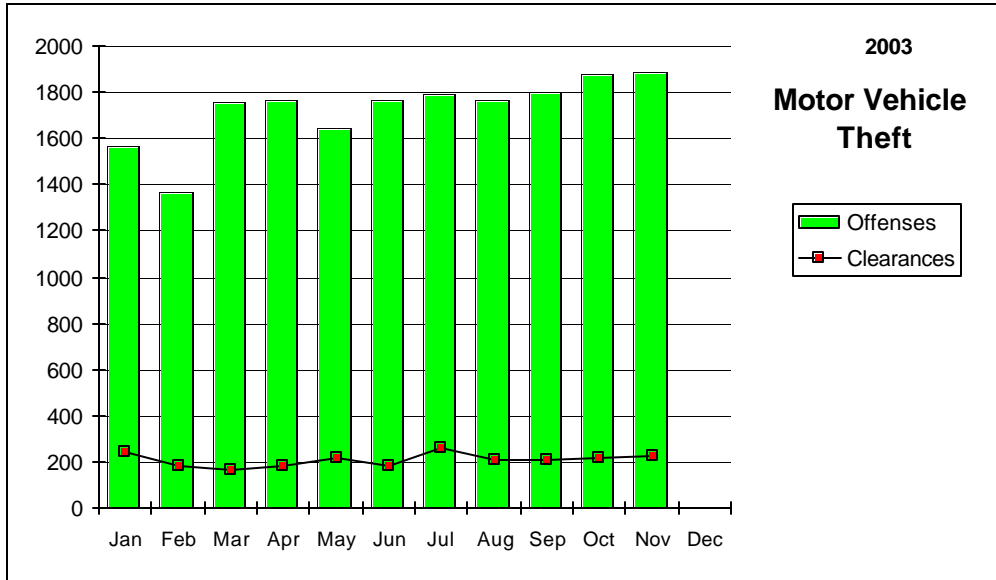
Nevada--Graphic Summary--UCR



Nevada--Graphic Summary--UCR



Nevada--Graphic Summary--UCR



Nevada--Murder--Incidence Level Variation--UCR

NOVEMBER 2003

Agency	NOVEMBER 2003 Offenses	NOVEMBER 2003 Cleared	YTD Offense s	2003 YTD Cleared	NOVEMBER 2002 Offenses	NOVEMBER 2002 Cleared	YTD Offense s	2002 YTD Cleared
Boulder	0	0	2	0	0	0	0	0
Carlin PD	0	0	0	0	0	0	0	0
Carson SO	0	0	0	0	1	1	1	1
Churchill SO	0	0	0	0	0	0	0	0
Clark Co Schl PD	0	0	0	0	0	0	0	0
Douglas SO	0	0	0	0	0	0	1	1
Elko PD	0	0	0	0	0	0	1	0
Elko SO	0	0	1	1	0	0	1	1
Esmeralda SO	0	0	0	0	0	0	0	0
Eureka SO	0	0	0	0	0	0	0	0
Fallon PD	0	0	0	0	0	0	0	0
Henderson PD	2	1	10	5	2	0	5	4
Humboldt SO	0	0	0	0	0	0	0	0
Lander SO	0	0	0	0	0	0	0	0
Lincoln SO	0	0	0	0	0	0	0	0
Lovelock PD	0	0	0	0	0	0	0	0
LV Fire Dept	0	0	0	0	0	0	0	0
LV Metro	15	8	134	55	7	4	125	70
Lyon SO	1	1	1	1	0	0	0	0
Mesquite PD	0	0	1	0	0	0	0	0
Mineral SO	0	0	0	0	0	0	1	1
NLVPD	1	0	17	9	2	1	19	5
Nye SO	0	0	0	0	0	0	2	1
Pershing SO	0	0	1	1	0	0	0	0
Reno PD	1	0	11	9	1	1	9	8
Sparks PD	0	0	3	5	0	0	2	5
Storey SO	0	0	0	0	0	0	0	0
TMCC PD	0	0	0	0	0	0	0	0
UNLV PD	0	0	0	0	0	0	0	0
UNR PD	0	0	0	0	0	0	0	0
Washoe SO	1	1	6	3	0	0	1	0
Washoe Co Schl PD	0	0	0	0	0	0	0	0
Wendover PD	0	0	0	0	0	0	1	1
White Pine SO	0	0	0	0	0	0	0	0
Winnemucca PD	0	0	0	0	0	0	0	0
Yerington PD	0	0	0	0	0	0	0	0
TOTALS	21	11	187	89	13	7	169	98

Nevada--Rape--Incidence Level Variation--UCR

NOVEMBER 2003

Agency	NOVEMBER 2003 Offenses	NOVEMBER 2003 Cleared	YTD Offense s	2003 YTD Cleared	NOVEMBER 2002 Offenses	NOVEMBER 2002 Cleared	YTD Offense s	2002 YTD Cleared
Boulder	0	0	0	0	0	0	0	0
Carlin PD	0	0	0	0	0	0	0	0
Carson SO	0	0	1	0	0	0	29	6
Churchill SO	1	1	14	6	3	0	19	11
Clark Co Schl PD	0	0	0	0	0	0	0	0
Douglas SO	0	0	0	0	0	0	0	0
Elko PD	1	0	5	4	1	0	4	3
Elko SO	1	1	10	6	1	0	6	0
Esmeralda SO	0	0	1	1	0	0	0	0
Eureka SO	0	0	0	0	0	0	0	0
Fallon PD	0	0	1	0	0	0	2	1
Henderson PD	10	9	95	36	3	4	94	36
Humboldt SO	0	0	0	0	0	0	0	0
Lander SO	1	0	3	0	0	0	0	0
Lincoln SO	0	0	1	0	0	0	0	0
Lovelock PD	0	0	-1	0	0	0	2	1
LV Fire Dept	0	0	0	0	0	0	0	0
LV Metro	37	13	488	117	42	6	458	153
Lyon SO	0	0	8	2	2	1	8	2
Mesquite PD	0	0	0	0	0	0	0	0
Mineral SO	0	0	0	0	0	0	1	1
NLVPD	1	1	45	25	6	0	48	22
Nye SO	0	0	2	2	0	0	0	0
Pershing SO	1	0	4	1	0	0	3	1
Reno PD	4	2	82	16	11	4	123	20
Sparks PD	1	0	42	32	4	2	49	53
Storey SO	0	0	0	0	0	0	1	1
TMCC PD	0	0	0	0	0	0	0	0
UNLV PD	0	0	3	1	0	0	2	0
UNR PD	1	0	6	0	1	0	3	0
Washoe SO	0	0	4	3	0	0	6	2
Washoe Co Schl PD	0	0	0	1	1	0	1	0
Wendover PD	0	0	1	0	0	0	2	2
White Pine SO	0	0	2	1	0	0	1	1
Winnemucca PD	0	0	4	4	0	0	2	2
Yerington PD	0	0	0	0	0	0	0	0
TOTALS	59	27	821	258	75	17	864	318

Nevada--Robbery--Incidence Level Variation--UCR

NOVEMBER 2003

Agency	NOVEMBER 2003 Offenses	NOVEMBER 2003 Cleared	YTD Offense s	2003 YTD Cleared	NOVEMBER 2002 Offenses	NOVEMBER 2002 Cleared	YTD Offense s	2002 YTD Cleared
Boulder	1	0	3	1	1	0	3	1
Carlin PD	0	0	0	0	0	0	1	0
Carson SO	6	1	22	6	1	0	27	11
Churchill SO	0	0	2	0	0	0	1	0
Clark Co Schl PD	5	2	34	15	3	1	19	7
Douglas SO	1	1	7	5	2	1	11	7
Elko PD	2	0	10	3	0	0	5	0
Elko SO	0	0	2	2	0	0	3	2
Esmeralda SO	0	0	0	0	0	0	0	0
Eureka SO	0	0	0	0	0	0	0	0
Fallon PD	1	0	8	2	0	0	4	1
Henderson PD	13	3	148	44	19	7	173	46
Humboldt SO	0	0	0	0	0	0	0	0
Lander SO	0	0	1	0	0	0	1	0
Lincoln SO	0	0	0	0	0	0	1	0
Lovelock PD	0	0	0	0	0	0	0	0
LV Fire Dept	0	0	0	0	0	0	0	0
LV Metro	349	30	3605	598	361	49	3404	612
Lyon SO	0	1	5	2	0	0	1	0
Mesquite PD	0	0	4	2	0	0	3	1
Mineral SO	0	0	0	0	1	1	2	2
NLVPD	30	4	301	49	34	5	407	70
Nye SO	1	0	13	5	1	1	15	9
Pershing SO	0	0	0	0	0	0	1	0
Reno PD	45	14	444	139	52	18	404	113
Sparks PD	8	6	90	34	7	3	87	41
Storey SO	0	0	4	2	0	0	0	0
TMCC PD	0	0	0	0	0	0	0	0
UNLV PD	0	0	3	1	0	0	4	1
UNR PD	1	0	1	0	0	0	0	0
Washoe SO	1	1	19	8	4	2	15	7
Washoe Co Schl PD	0	0	5	5	1	0	2	0
Wendover PD	0	0	2	0	1	1	2	1
White Pine SO	2	2	2	2	0	0	2	1
Winnemucca PD	0	0	3	1	0	0	1	0
Yerington PD	0	0	0	0	0	0	0	0
TOTALS	466	65	4738	926	488	89	4599	933

Nevada--Aggravated Assault--Incidence Level Variation--UCR

NOVEMBER 2003

Agency	NOVEMBER	NOVEMBER	2003 YTD		NOVEMBER	NOVEMBER	2002 YTD	
	2003 Offenses	2003 Cleared	Offenses	Cleared	2002 Offenses	2002 Cleared	Offenses	Cleared
Boulder	0	0	30	14	5	5	52	40
Carlin PD	0	0	9	8	0	0	9	7
Carson SO	19	18	216	122	30	17	216	112
Churchill SO	2	3	50	39	3	7	38	34
Clark Co SchI PD	5	4	43	29	1	1	29	22
Douglas SO	4	3	42	21	5	3	42	25
Elko PD	0	0	12	3	3	0	21	9
Elko SO	1	1	13	10	1	1	19	12
Esmeralda SO	0	0	5	5	0	0	1	1
Eureka SO	0	0	4	2	0	0	5	2
Fallon PD	2	2	9	6	1	1	14	8
Henderson PD	17	7	199	145	10	6	127	106
Humboldt SO	2	0	44	27	5	3	51	32
Lander SO	7	3	26	8	1	0	32	16
Lincoln SO	0	0	1	1	1	0	3	1
Lovelock PD	0	0	13	11	0	0	4	3
LV Fire Dept	0	0	0	0	0	0	0	0
LV Metro	312	71	4211	944	408	131	4210	1692
Lyon SO	4	4	72	62	6	6	58	55
Mesquite PD	0	0	13	11	2	1	8	7
Mineral SO	0	0	2	2	0	0	3	3
NLVPD	56	34	712	389	57	30	723	392
Nye SO	4	4	81	81	12	12	105	93
Pershing SO	2	1	20	12	0	0	9	7
Reno PD	44	26	620	332	52	36	861	456
Sparks PD	18	13	196	163	17	15	179	168
Storey SO	1	1	1	1	1	0	26	10
TMCC PD	0	0	0	0	0	0	0	0
UNLV PD	0	0	5	3	0	0	6	5
UNR PD	0	0	3	2	0	0	2	2
Washoe SO	13	9	270	173	22	8	153	64
Washoe Co SchI PD	0	0	4	4	2	2	7	7
Wendover PD	3	2	12	11	0	0	10	8
White Pine SO	1	1	28	25	3	2	24	20
Winnemucca PD	1	1	12	11	0	0	8	6
Yerington PD	0	0	4	3	1	0	9	4
TOTALS	518	208	6982	2680	649	287	7064	3429

Nevada--All Assaults--Incidence Level Variation--UCR

NOVEMBER 2003

Agency	NOVEMBER 2003 Offenses	NOVEMBER 2003 Cleared	2003 YTD Offenses	2003 YTD Cleared	NOVEMBER 2002 Offenses	NOVEMBER 2002 Cleared	2002 YTD Offenses	2002 YTD Cleared
Boulder	0	0	35	18	11	11	149	56
Carlin PD	6	6	29	24	0	0	17	14
Carson SO	60	42	880	445	74	38	836	451
Churchill SO	8	8	197	159	28	27	221	177
Clark Co Schl PD	72	44	839	521	72	47	782	479
Douglas SO	47	35	527	369	24	21	421	330
Elko PD	22	11	260	115	17	6	226	124
Elko SO	3	2	23	16	2	2	85	58
Esmeralda SO	0	0	6	6	1	1	4	4
Eureka SO	1	0	10	4	0	0	10	4
Fallon PD	15	7	219	153	24	16	201	118
Henderson PD	183	94	2140	1398	161	95	1971	1497
Humboldt SO	3	0	60	38	7	3	58	36
Lander SO	13	7	70	43	3	2	51	25
Lincoln SO	2	2	18	11	5	2	23	14
Lovelock PD	1	1	47	45	2	2	53	51
LV Fire Dept	0	0	0	0	0	0	0	0
LV Metro	1797	472	22518	4722	1756	626	21414	9022
Lyon SO	37	37	433	409	40	37	423	412
Mesquite PD	13	14	178	151	16	12	239	172
Mineral SO	0	0	36	38	1	1	29	29
NLVPD	210	123	2583	1409	197	107	2541	1474
Nye SO	50	50	601	601	60	60	616	571
Pershing SO	3	2	40	27	2	0	26	14
Reno PD	297	161	4057	2091	359	194	3802	1900
Sparks PD	108	90	1419	1183	116	116	1241	1122
Storey SO	2	2	24	12	3	1	28	11
TMCC PD	1	1	2	1	0	0	4	0
UNLV PD	1	0	26	17	1	1	20	17
UNR PD	1	1	24	10	2	0	15	10
Washoe SO	66	48	794	496	60	38	793	517
Washoe Co Schl PD	0	0	20	20	2	2	183	173
Wendover PD	6	5	45	40	3	3	48	36
White Pine SO	5	3	103	88	10	6	80	62
Winnemucca PD	8	8	88	82	8	8	90	82
Yerington PD	4	1	58	49	1	0	11	5
TOTALS	3045	1277	38409	14811	3068	1485	36711	19067

Nevada--Burglary--Incidence Level Variation--UCR

NOVEMBER 2003

Agency	NOVEMBER 2003 Offenses	NOVEMBER 2003 Cleared	YTD Offense s	2003 YTD Cleared	NOVEMBER 2002 Offenses	NOVEMBER 2002 Cleared	YTD Offense s	2002 YTD Cleared
Boulder	11	1	108	33	12	1	82	11
Carlin PD	0	0	10	5	1	0	12	0
Carson SO	34	5	379	52	30	5	363	55
Churchill SO	9	1	75	19	3	1	55	18
Clark Co SchI PD	31	5	252	45	13	0	262	37
Douglas SO	18	6	241	51	17	2	186	42
Elko PD	8	2	114	11	13	2	138	31
Elko SO	6	2	88	18	11	0	121	21
Esmeralda SO	0	0	6	2	0	0	2	1
Eureka SO	0	0	5	0	0	0	3	0
Fallon PD	7	1	58	11	4	0	48	6
Henderson PD	121	25	1305	166	106	18	1350	198
Humboldt SO	2	1	24	4	2	0	38	7
Lander SO	2	0	31	5	1	0	31	4
Lincoln SO	1	0	21	8	2	2	14	5
Lovelock PD	2	0	24	13	1	1	22	15
LV Fire Dept	0	0	0	0	0	0	0	0
LV Metro	936	249	11661	3099	955	278	10170	2841
Lyon SO	16	3	208	28	13	1	142	23
Mesquite PD	0	0	10	10	2	0	16	9
Mineral SO	4	1	34	4	1	0	20	4
NLVPD	115	7	1510	156	121	16	1354	126
Nye SO	55	21	479	210	22	16	371	190
Pershing SO	2	0	35	5	1	0	18	0
Reno PD	141	13	1789	173	112	9	1198	126
Sparks PD	71	18	751	197	43	14	620	188
Storey SO	0	0	6	0	0	0	10	2
TMCC PD	0	0	5	0	0	0	7	0
UNLV PD	8	0	121	5	10	0	79	3
UNR PD	2	0	22	2	2	0	32	0
Washoe SO	32	3	456	47	27	6	377	37
Washoe Co SchI PD	2	0	54	8	3	0	11	1
Wendover PD	3	2	18	5	3	0	29	9
White Pine SO	2	0	47	9	1	1	29	2
Winnemucca PD	1	0	48	19	2	1	63	17
Yerington PD	4	0	46	21	0	0	37	22
TOTALS	1646	366	20041	4441	1534	374	17310	4051

Nevada--Larceny--Incidence Level Variation--UCR

NOVEMBER 2003

Agency	NOVEMBER 2003 Offenses	NOVEMBER 2003 Cleared	YTD Offenses	2003 YTD Cleared	NOVEMBER 2002 Offense	NOVEMBER 2002 Cleared	YTD Offenses	2002 YTD Cleared
Boulder	4	0	131	15	13	0	136	14
Carlin PD	2	0	37	11	2	1	49	7
Carson SO	113	26	1091	219	102	12	1135	143
Churchill SO	11	6	141	44	7	2	140	28
Clark Co Schi PD	118	8	776	105	51	10	654	79
Douglas SO	57	13	683	180	58	14	599	186
Elko PD	31	5	349	45	29	6	388	71
Elko SO	2	2	83	14	10	1	104	16
Esmeralda SO	0	0	2	2	0	0	2	0
Eureka SO	2	1	13	3	1	0	14	3
Fallon PD	42	10	392	74	30	7	392	59
Henderson PD	240	46	2606	536	236	67	2418	570
Humboldt SO	6	0	42	14	5	2	56	14
Lander SO	7	2	36	5	1	0	48	3
Lincoln SO	2	0	34	6	2	0	21	1
Lovelock PD	5	2	34	21	4	1	34	21
LV Fire Dept	0	0	0	0	0	0	0	0
LV Metro	2626	29	27203	2896	1376	462	21871	6344
Lyon SO	44	10	419	96	32	9	343	69
Mesquite PD	15	11	210	69	20	7	149	75
Mineral SO	0	0	19	7	1	0	18	6
NLVPD	212	62	2448	538	241	56	2817	633
Nye SO	58	27	531	279	37	20	537	281
Pershing SO	3	2	47	18	4	0	59	11
Reno PD	580	140	7001	1435	797	198	7136	1323
Sparks PD	192	33	2238	582	148	31	2205	630
Storey SO	4	0	36	3	2	0	32	3
TMCC PD	2	0	11	0	2	0	14	0
UNLV PD	24	2	253	9	17	0	307	13
UNR PD	13	0	129	2	20	0	136	4
Washoe SO	85	8	715	89	74	11	847	154
Washoe Co Schi PD	22	7	233	50	20	8	137	44
Wendover PD	23	15	109	40	10	5	125	30
White Pine SO	14	4	121	26	7	2	110	13
Winnemucca PD	2	1	118	46	10	4	130	43
Yerington PD	2	1	23	11	1	1	35	25
TOTALS	4563	473	48314	7490	3370	937	43198	10916

Nevada--MV Theft--Incidence Level Variation--UCR

NOVEMBER 2003

Agency	NOVEMBER 2003 Offenses	NOVEMBER 2003 Cleared	YTD Offenses	2003 YTD Cleared	NOVEMBER 2002 Offenses	NOVEMBER 2002 Cleared	YTD Offenses	2002 YTD Cleared
Boulder	1	0	25	16	1	1	24	14
Carlin PD	1	1	8	4	0	0	5	4
Carson SO	17	0	156	22	15	2	121	18
Churchill SO	0	0	41	24	2	2	25	14
Clark Co Schl PD	6	0	51	5	6	1	46	3
Douglas SO	3	3	49	36	5	4	55	43
Elko PD	6	0	31	4	0	0	25	8
Elko SO	1	0	20	12	1	1	16	11
Esmeralda SO	0	0	0	0	0	0	1	1
Eureka SO	0	0	4	2	1	1	2	2
Fallon PD	2	1	22	5	1	1	22	10
Henderson PD	110	5	1265	64	108	7	1035	72
Humboldt SO	0	0	5	3	1	1	12	8
Lander SO	1	0	7	2	1	0	9	1
Lincoln SO	2	1	10	2	0	0	8	4
Lovelock PD	0	0	0	0	0	0	3	3
LV Fire Dept	0	0	0	0	0	0	0	0
LV Metro	1331	175	13388	1646	1039	137	11215	1706
Lyon SO	3	0	67	18	4	2	43	16
Mesquite PD	3	1	33	13	3	3	37	19
Mineral SO	0	0	0	0	0	0	2	1
NLVPD	155	10	1623	101	113	11	1409	108
Nye SO	6	3	59	32	6	4	67	44
Pershing SO	2	2	4	3	0	0	3	0
Reno PD	146	12	1394	132	92	10	1014	90
Sparks PD	54	6	399	87	34	5	289	99
Storey SO	0	0	2	0	0	0	5	3
TMCC PD	0	0	0	0	0	0	1	0
UNLV PD	12	0	81	6	10	1	65	4
UNR PD	1	0	8	0	0	0	5	0
Washoe SO	19	1	171	28	20	4	173	26
Washoe Co Schl PD	1	1	7	4	0	0	2	1
Wendover PD	1	1	11	9	1	1	13	6
White Pine SO	0	0	19	5	0	0	7	0
Winnemucca PD	1	1	14	5	2	0	22	5
Yerington PD	0	0	0	0	0	0	3	1
TOTALS	1885	224	18974	2290	1466	199	15784	2345

Nevada--Arson--Incidence Level Variation--UCR

NOVEMBER 2003

Agency	NOVEMBER 2003 Offenses	NOVEMBER 2003 Cleared	YTD Offense s	2003 YTD Cleared	NOVEMBER 2002 Offenses	NOVEMBER 2002 Cleared	YTD Offense s	2002 YTD Cleared
Boulder	0	0	3	1	0	0	3	1
Carlin PD	0	0	0	0	0	0	0	0
Carson SO	1	0	15	1	3	0	17	2
Churchill SO	0	0	1	1	0	0	2	1
Clark Co Schl PD	4	1	65	18	1	0	56	20
Douglas SO	1	0	4	2	2	1	6	4
Elko PD	1	1	3	2	0	0	9	2
Elko SO	1	0	3	1	0	0	1	0
Esmeralda SO	0	0	0	0	0	0	0	0
Eureka SO	0	0	0	0	0	0	1	0
Fallon PD	0	0	0	0	0	0	0	0
Henderson PD	3	0	42	4	12	5	51	14
Humboldt SO	0	0	0	0	0	0	0	0
Lander SO	0	0	0	0	0	0	0	0
Lincoln SO	0	0	0	0	0	0	0	0
Lovelock PD	0	0	0	0	0	0	0	0
LV Fire Dept	3	1	73	8	8	2	132	13
LV Metro	15	0	184	3	12	0	146	0
Lyon SO	0	0	8	4	2	2	5	3
Mesquite PD	0	0	0	0	0	0	0	0
Mineral SO	0	0	0	0	1	1	4	2
NLVPD	2	0	47	6	9	0	62	5
Nye SO	0	0	10	0	2	1	14	8
Pershing SO	0	0	0	0	0	0	0	0
Reno PD	0	0	41	6	9	1	61	10
Sparks PD	0	0	0	0	0	0	0	0
Storey SO	0	0	2	2	0	0	0	0
TMCC PD	0	0	0	0	0	0	0	0
UNLV PD	0	0	1	1	2	0	5	0
UNR PD	0	0	1	0	0	0	1	1
Washoe SO	1	0	6	1	2	0	7	2
Washoe CO Sci PD	0	0	19	3	1	0	5	2
Wendover PD	1	1	2	2	0	0	2	0
White Pine SO	0	0	1	0	0	0	3	2
Winnemucca PD	0	0	3	1	0	0	2	2
Yerington PD	0	0	0	0	0	0	0	0
TOTALS	33	4	534	67	66	13	595	94

Nevada--Hate Crimes--UCR

NOVEMBER 2003

AGENCY	OFFENSE	LOCATION	BIAS	VICTIM TYPE / NUMBER	OFFENDER RACE / NUMBER
Las Vegas Metro	Destruction/Damage/Vandalism	Residence/Home	Anti-Male Homosexual	Individual-1	Unknown-00
Las Vegas Metro	Aggravated Assault	Highway/Road/Alley/Street	Anti-Black	Individual-1	White-1
Las Vegas Metro	Simple Assault	Highway/Road/Alley/Street	Anti-Hispanic	Individual-2	Black-1

Stolen/Recovered Property Report

NOVEMBER 2003

Property Type	Boulder PD	Carlin PD	Carson SO	Churchill SO	Clark Co SchI PD	Douglas SO	Elko PD	Elko SO	Esmeralda SO
Currency									
Stolen	\$2,298	\$100	\$5,313	\$1,600	\$2,279	\$10,259	\$1,603	\$2,820	\$0
Recovered	\$0	\$0	\$0	\$0	\$2	\$4,500	\$0	\$0	\$0
% Recovered	0.0%	0.0%	0.0%	0.0%	0.1%	43.9%	0.0%	0.0%	0.0%
Jewelry									
Stolen	\$2,350	\$0	\$2,195	\$4,300	\$455	\$8,720	\$169	\$0	\$0
Recovered	\$0	\$0	\$0	\$300	\$25	\$0	\$0	\$0	\$0
% Recovered	0.0%	0.0%	0.0%	7.0%	5.5%	0.0%	0.0%	0.0%	0.0%
Clothing									
Stolen	\$0	\$0	\$3,850	\$0	\$100	\$2,001	\$312	\$0	\$0
Recovered	\$0	\$0	\$0	\$0	\$0	\$551	\$24	\$0	\$0
% Recovered	0.0%	0.0%	0.0%	0.0%	0.0%	27.5%	7.7%	0.0%	0.0%
Motor Vehicle									
Stolen	\$1,500	\$10,000	\$110,998	\$0	\$52,500	\$11,450	\$101,400	\$500	\$0
Recovered	\$0	\$10,000	\$38,399	\$2,684	\$4,000	\$11,450	\$56,900	\$0	\$0
% Recovered	0.0%	100.0%	34.6%	0.0%	7.6%	100.0%	56.1%	0.0%	0.0%
Office Equipment									
Stolen	\$1,250	\$0	\$6,608	\$0	\$27,155	\$0	\$3,030	\$50	\$0
Recovered	\$0	\$0	\$0	\$0	\$0	\$0	\$530	\$0	\$0
% Recovered	0.0%	0.0%	0.0%	0.0%	0.0%	0.0%	17.5%	0.0%	0.0%
TV, VCR, Camera, Etc.									
Stolen	\$0	\$0	\$12,629	\$0	\$9,640	\$3,763	\$4,594	\$0	\$0
Recovered	\$0	\$0	\$80	\$0	\$0	\$1,136	\$345	\$0	\$0
% Recovered	0.0%	0.0%	0.6%	0.0%	0.0%	30.2%	7.5%	0.0%	0.0%
Firearm									
Stolen	\$0	\$0	\$5,220	\$2,719	\$0	\$0	\$0	\$0	\$0
Recovered	\$400	\$0	\$0	\$575	\$0	\$0	\$0	\$0	\$0
% Recovered	0.0%	0.0%	0.0%	21.1%	0.0%	0.0%	0.0%	0.0%	0.0%
Household Goods									
Stolen	\$207	\$0	\$75	\$3,733	\$0	\$0	\$0	\$0	\$0
Recovered	\$0	\$0	\$0	\$0	\$0	\$0	\$0	\$0	\$0
% Recovered	0.0%	0.0%	0.0%	0.0%	0.0%	0.0%	0.0%	0.0%	0.0%
Consumable Goods									
Stolen	\$3	\$0	\$89	\$477	\$0	\$217	\$146	\$0	\$0
Recovered	\$0	\$0	\$0	\$70	\$0	\$141	\$0	\$0	\$0
% Recovered	0.0%	0.0%	0.0%	14.7%	0.0%	65.0%	0.0%	0.0%	0.0%
Livestock									
Stolen	\$0	\$0	\$0	\$0	\$0	\$0	\$0	\$0	\$0
Recovered	\$0	\$0	\$0	\$0	\$0	\$0	\$0	\$0	\$0
% Recovered	0.0%	0.0%	0.0%	0.0%	0.0%	0.0%	0.0%	0.0%	0.0%
Misc.									
Stolen	\$1,156	\$46	\$108,179	\$14,056	\$32,300	\$37,361	\$61,909	\$540	\$0
Recovered	\$0	\$0	\$580	\$1,880	\$925	\$2,943	\$44,560	\$0	\$0
% Recovered	0.0%	0.0%	0.5%	13.4%	2.9%	7.9%	72.0%	0.0%	0.0%
TOTALS									
Stolen	\$8,764	\$10,146	\$255,156	\$26,885	\$124,429	\$73,771	\$173,163	\$3,910	\$0
Recovered	\$400	\$10,000	\$39,059	\$5,509	\$4,952	\$20,721	\$102,359	\$0	\$0
% Recovered	4.6%	98.6%	15.3%	20.5%	4.0%	28.1%	59.1%	0.0%	0.0%

Stolen/Recovered Property Report

NOVEMBER 2003

Property Type	Eureka SO	Fallon PD	Henderson PD	Humboldt SO	Lander SO	Las Vegas Metro	Lincoln SO	Lovelock PD	Lyon SO
Currency									
Stolen	\$0	\$1,891	\$21,298	\$502	\$144	\$903,918	\$0	\$0	\$13,821
Recovered	\$0	\$0	\$2,962	\$502	\$40	\$12,806	\$1	\$0	\$0
% Recovered	0.0%	0.0%	13.9%	100.0%	27.8%	1.4%	0.0%	0.0%	0.0%
Jewelry									
Stolen	\$0	\$200	\$246,758	\$0	\$0	\$2,005,521	\$0	\$2,550	\$3,550
Recovered	\$0	\$0	\$26,864	\$0	\$0	\$9,015	\$0	\$0	\$100
% Recovered	0.0%	0.0%	10.9%	0.0%	0.0%	0.4%	0.0%	0.0%	2.8%
Clothing									
Stolen	\$0	\$131	\$14,447	\$400	\$100	\$200,353	\$30	\$0	\$220
Recovered	\$57	\$42	\$1,499	\$0	\$0	\$29,820	\$0	\$0	\$20
% Recovered	0.0%	32.1%	10.4%	0.0%	0.0%	14.9%	0.0%	0.0%	9.1%
Motor Vehicle									
Stolen	\$0	\$30,000	\$759,509	\$0	\$7,500	\$4,623,737	\$5,000	\$0	\$11,700
Recovered	\$0	\$26,100	\$653,555	\$0	\$0	\$1,728,729	\$5,000	\$0	\$3,600
% Recovered	0.0%	87.0%	86.0%	0.0%	0.0%	37.4%	100.0%	0.0%	30.8%
Office Equipment									
Stolen	\$0	\$6,758	\$33,603	\$0	\$0	\$478,144	\$0	\$0	\$400
Recovered	\$0	\$0	\$2,832	\$0	\$0	\$7,108	\$535	\$0	\$0
% Recovered	0.0%	0.0%	8.4%	0.0%	0.0%	1.5%	0.0%	0.0%	0.0%
TV, VCR, Camera, Etc.									
Stolen	\$0	\$2,450	\$99,069	\$100	\$1	\$1,197,239	\$1,000	\$250	\$1,445
Recovered	\$0	\$0	\$5,254	\$0	\$0	\$13,019	\$0	\$0	\$900
% Recovered	0.0%	0.0%	5.3%	0.0%	0.0%	1.1%	0.0%	0.0%	62.3%
Firearm									
Stolen	\$0	\$140	\$16,513	\$900	\$247	\$39,380	\$0	\$0	\$11,710
Recovered	\$0	\$0	\$3,630	\$0	\$222	\$2,597	\$0	\$0	\$0
% Recovered	0.0%	0.0%	22.0%	0.0%	89.9%	6.6%	0.0%	0.0%	0.0%
Household Goods									
Stolen	\$0	\$445	\$20,224	\$50	\$0	\$165,341	\$1	\$0	\$2,640
Recovered	\$0	\$15	\$140	\$0	\$0	\$1,458	\$1	\$0	\$1,500
% Recovered	0.0%	3.4%	0.7%	0.0%	0.0%	0.9%	100.0%	0.0%	56.8%
Consumable Goods									
Stolen	\$5	\$37	\$3,332	\$89	\$2	\$872,248	\$0	\$0	\$109
Recovered	\$5	\$29	\$820	\$0	\$2	\$5,350	\$0	\$0	\$103
% Recovered	100.0%	78.4%	24.6%	0.0%	100.0%	0.6%	0.0%	0.0%	94.5%
Livestock									
Stolen	\$0	\$0	\$0	\$0	\$0	\$1,037	\$0	\$0	\$0
Recovered	\$0	\$0	\$0	\$0	\$0	\$37	\$0	\$0	\$0
% Recovered	0.0%	0.0%	0.0%	0.0%	0.0%	3.6%	0.0%	0.0%	0.0%
Misc.									
Stolen	\$1,225	\$7,886	\$317,575	\$650	\$8,772	\$2,126,630	\$207	\$0	\$11,796
Recovered	\$0	\$120	\$13,684	\$0	\$35	\$35,496	\$1	\$0	\$412
% Recovered	0.0%	1.5%	4.3%	0.0%	0.4%	1.7%	0.5%	0.0%	3.5%
TOTALS									
Stolen	\$1,230	\$49,938	\$1,532,328	\$2,691	\$16,766	\$12,613,548	\$6,238	\$2,800	\$57,391
Recovered	\$62	\$26,306	\$711,240	\$502	\$299	\$1,845,435	\$5,538	\$0	\$6,635
% Recovered	5.0%	52.7%	46.4%	18.7%	1.8%	14.6%	88.8%	0.0%	11.6%

Stolen/Recovered Property Report

NOVEMBER 2003

Property Type	Mesquite PD	Mineral SO	NLVPD	Nye SO	Pershing SO	Reno PD	Sparks PD	Storey SO	TMCC PD	UNLV PD
Currency										
Stolen	\$0	\$230	\$46,502	\$4,630	\$0	\$76,339	\$29,026	\$0	\$0	\$260
Recovered	\$0	\$0	\$1,050	\$0	\$0	\$665	\$1,061	\$0	\$0	\$0
% Recovered	0.0%	0.0%	2.3%	0.0%	0.0%	0.9%	3.7%	0.0%	0.0%	0.0%
Jewelry										
Stolen	\$0	\$0	\$62,426	\$0	\$329	\$173,431	\$77,014	\$1,400	\$0	\$0
Recovered	\$0	\$0	\$22	\$0	\$0	\$10,468	\$205	\$0	\$0	\$0
% Recovered	0.0%	0.0%	0.0%	0.0%	0.0%	6.0%	0.3%	0.0%	0.0%	0.0%
Clothing										
Stolen	\$0	\$0	\$9,559	\$1,550	\$0	\$31,957	\$8,907	\$170	\$35	\$760
Recovered	\$0	\$0	\$678	\$0	\$0	\$5,048	\$388	\$0	\$20	\$180
% Recovered	0.0%	0.0%	7.1%	0.0%	0.0%	15.8%	4.4%	0.0%	57.1%	23.7%
Motor Vehicle										
Stolen	\$5,000	\$0	\$1,253,977	\$45,000	\$3,800	\$1,060,554	\$350,366	\$0	\$0	\$31,500
Recovered	\$2,500	\$0	\$771,000	\$35,000	\$1,500	\$962,224	\$243,900	\$0	\$0	\$6,000
% Recovered	50.0%	0.0%	61.5%	77.8%	39.5%	90.7%	69.6%	0.0%	0.0%	19.0%
Office Equipment										
Stolen	\$325	\$100	\$5,100	\$3,500	\$0	\$29,423	\$10,492	\$0	\$0	\$0
Recovered	\$0	\$0	\$0	\$1,200	\$0	\$1,600	\$140	\$0	\$0	\$0
% Recovered	0.0%	0.0%	0.0%	34.3%	0.0%	5.4%	1.3%	0.0%	0.0%	0.0%
TV, VCR, Camera, Etc.										
Stolen	\$2,200	\$0	\$88,172	\$2,500	\$0	\$73,660	\$28,130	\$1,079	\$0	\$13,270
Recovered	\$0	\$0	\$1,276	\$1,500	\$0	\$380	\$1,698	\$0	\$0	\$135
% Recovered	0.0%	0.0%	1.4%	60.0%	0.0%	0.5%	6.0%	0.0%	0.0%	1.0%
Firearm										
Stolen	\$0	\$0	\$4,950	\$5,000	\$0	\$6,935	\$1,600	\$0	\$0	\$0
Recovered	\$0	\$0	\$0	\$1,500	\$0	\$200	\$50	\$0	\$0	\$0
% Recovered	0.0%	0.0%	0.0%	30.0%	0.0%	2.9%	3.1%	0.0%	0.0%	0.0%
Household Goods										
Stolen	\$0	\$0	\$6,278	\$0	\$0	\$9,158	\$27,544	\$0	\$0	\$0
Recovered	\$0	\$0	\$1,501	\$0	\$0	\$60	\$1,149	\$0	\$0	\$0
% Recovered	0.0%	0.0%	23.9%	0.0%	0.0%	0.7%	4.2%	0.0%	0.0%	0.0%
Consumable Goods										
Stolen	\$0	\$0	\$4,896	\$76	\$0	\$1,448	\$3,008	\$0	\$0	\$0
Recovered	\$0	\$0	\$346	\$50	\$0	\$59	\$82	\$0	\$0	\$0
% Recovered	0.0%	0.0%	7.1%	65.8%	0.0%	4.1%	2.7%	0.0%	0.0%	0.0%
Livestock										
Stolen	\$0	\$0	\$0	\$0	\$0	\$2,300	\$0	\$0	\$0	\$0
Recovered	\$0	\$0	\$0	\$0	\$0	\$0	\$0	\$0	\$0	\$0
% Recovered	0.0%	0.0%	0.0%	0.0%	0.0%	0.0%	0.0%	0.0%	0.0%	0.0%
Misc.										
Stolen	\$1,890	\$0	\$202,057	\$16,126	\$0	\$317,699	\$85,430	\$170	\$640	\$4,350
Recovered	\$1,215	\$0	\$8,891	\$8,525	\$0	\$6,511	\$2,527	\$0	\$150	\$150
% Recovered	64.3%	0.0%	4.4%	52.9%	0.0%	2.0%	3.0%	0.0%	23.4%	3.4%
TOTALS										
Stolen	\$9,415	\$330	\$1,683,917	\$78,382	\$4,129	\$1,782,904	\$621,517	\$2,819	\$675	\$50,140
Recovered	\$3,715	\$0	\$784,764	\$47,775	\$1,500	\$987,215	\$251,200	\$0	\$170	\$6,465
% Recovered	39.5%	0.0%	46.6%	61.0%	36.3%	55.4%	40.4%	0.0%	25.2%	12.9%

Stolen/Recovered Property Report

NOVEMBER 2003

Property Type	UNR PD	Washoe SO	Washoe Co Schl PD	Wendover PD	White Pine SO	Winnemucca PD	Yerington PD	Total By Property
Currency								
Stolen	\$1,379	\$2,600	\$510	\$2,014	\$0	\$0	\$0	\$1,131,336
Recovered	\$0	\$0	\$110	\$0	\$0	\$0	\$0	\$23,699
% Recovered	0.0%	0.0%	21.6%	0.0%	0.0%	0.0%	0.0%	2.1%
Jewelry								
Stolen	\$0	\$44,215	\$0	\$1,730	\$5,011	\$0	\$0	\$2,642,324
Recovered	\$0	\$0	\$0	\$0	\$11	\$0	\$0	\$47,010
% Recovered	0.0%	0.0%	0.0%	0.0%	0.2%	0.0%	0.0%	1.8%
Clothing								
Stolen	\$0	\$2,065	\$0	\$681	\$0	\$0	\$673	\$278,301
Recovered	\$0	\$0	\$0	\$70	\$0	\$0	\$35	\$38,432
% Recovered	0.0%	0.0%	0.0%	10.3%	0.0%	0.0%	5.2%	13.8%
Motor Vehicle								
Stolen	\$2,500	\$122,601	\$2,247	\$6,000	\$0	\$13,000	\$0	\$8,622,339
Recovered	\$0	\$22,601	\$1,000	\$6,000	\$0	\$13,000	\$0	\$4,605,142
% Recovered	0.0%	18.4%	44.5%	100.0%	0.0%	100.0%	0.0%	53.4%
Office Equipment								
Stolen	\$872	\$4,800	\$499	\$10,985	\$0	\$0	\$0	\$623,094
Recovered	\$0	\$0	\$0	\$0	\$0	\$0	\$0	\$13,945
% Recovered	0.0%	0.0%	0.0%	0.0%	0.0%	0.0%	0.0%	2.2%
TV, VCR, Camera, Etc.								
Stolen	\$1,550	\$9,076	\$0	\$2,655	\$1,432	\$0	\$0	\$1,555,904
Recovered	\$0	\$0	\$0	\$250	\$1,432	\$0	\$0	\$27,405
% Recovered	0.0%	0.0%	0.0%	9.4%	100.0%	0.0%	0.0%	1.8%
Firearm								
Stolen	\$0	\$1,485	\$0	\$550	\$0	\$0	\$0	\$97,349
Recovered	\$0	\$0	\$0	\$0	\$0	\$0	\$0	\$9,174
% Recovered	0.0%	0.0%	0.0%	0.0%	0.0%	0.0%	0.0%	9.4%
Household Goods								
Stolen	\$0	\$7,605	\$0	\$280	\$1,500	\$0	\$0	\$245,081
Recovered	\$0	\$0	\$0	\$280	\$0	\$0	\$0	\$6,104
% Recovered	0.0%	0.0%	0.0%	100.0%	0.0%	0.0%	0.0%	2.5%
Consumable Goods								
Stolen	\$0	\$79	\$0	\$348	\$70	\$0	\$0	\$886,679
Recovered	\$0	\$12	\$0	\$0	\$22	\$0	\$0	\$7,090
% Recovered	0.0%	15.2%	0.0%	0.0%	31.0%	0.0%	0.0%	0.8%
Livestock								
Stolen	\$0	\$74,210	\$0	\$0	\$0	\$0	\$0	\$77,547
Recovered	\$0	\$0	\$0	\$0	\$0	\$0	\$0	\$37
% Recovered	0.0%	0.0%	0.0%	0.0%	0.0%	0.0%	0.0%	0.0%
Misc.								
Stolen	\$5,364	\$51,301	\$6,291	\$2,245	\$4,285	\$697	\$2,404	\$3,431,237
Recovered	\$0	\$600	\$3,500	\$81	\$0	\$30	\$0	\$132,816
% Recovered	0.0%	1.2%	55.6%	0.0%	0.0%	4.3%	0.0%	3.9%
TOTALS								
Stolen	\$11,665	\$320,037	\$9,547	\$27,488	\$12,298	\$13,697	\$3,077	\$19,591,191
Recovered	\$0	\$23,213	\$4,610	\$6,681	\$1,465	\$13,030	\$35	\$4,910,854
% Recovered	0.0%	7.3%	48.3%	24.3%	11.9%	95.1%	1.1%	25.1%

Nevada--Assaults on Officers by Agency--UCR

NOVEMBER 2003

Agency	NOVEMBER 2003 Offenses	NOVEMBER 2003 Cleared	2003 YTD Offenses	2003 YTD Cleared	NOVEMBER 2002 Offenses	NOVEMBER 2002 Cleared	2002 YTD Offenses	2002 YTD Cleared
Boulder	0	0	0	0	0	0	0	0
Carlin PD	0	0	0	0	0	0	3	3
Carson SO	0	0	10	10	0	0	9	8
Churchill SO	0	0	8	8	4	4	7	7
CirkSchIDst PD	0	0	0	0	0	0	0	0
Douglas SO	1	1	8	8	0	0	5	5
Elko PD	0	0	7	6	0	0	4	4
Elko SO	0	0	0	0	0	0	0	0
Esmeralda SO	0	0	0	0	0	0	0	0
Eureka SO	0	0	0	0	0	0	0	0
Fallon PD	0	0	0	0	0	0	0	0
Henderson PD	0	0	11	11	3	3	27	27
Highway Patrol	1	1	25	23	1	1	19	19
Humboldt SO	0	0	3	3	0	0	3	3
Lander SO	0	0	0	0	0	0	0	0
Lincoln SO	0	0	0	0	0	0	0	0
Lovelock PD	0	0	0	0	0	0	0	0
LV Fire Dept	0	0	0	0	0	0	0	0
LV Metro	24	24	294	293	23	23	277	277
Lyon SO	2	2	7	7	2	2	7	7
Mesquite PD	0	0	0	0	0	0	0	0
Mineral SO	0	0	0	0	0	0	3	3
NV Div Investigations	0	0	0	0	0	0	0	0
NLVPD	3	3	61	57	8	8	69	69
Nye SO	1	1	10	10	1	1	14	14
Pershing SO	0	0	0	0	0	0	0	0
Reno PD	1	1	14	13	1	1	5	5
Sparks PD	0	0	10	10	0	0	4	4
Storey SO	0	0	0	0	0	0	0	0
TMCC PD	0	0	0	0	0	0	0	0
UNLV PD	0	0	7	7	1	1	4	4
UNR PD	0	0	0	0	0	0	0	0
Washoe SO	0	0	2	2	0	0	14	12
Washoe Co Schl PD	0	0	0	0	0	0	3	3
Wendover PD	0	0	3	3	0	0	1	1
White Pine SO	1	1	1	1	0	0	1	1
Winnemucca PD	0	0	1	1	0	0	3	3
Yerington PD	0	0	0	0	0	0	0	0
TOTALS	34	34	482	473	44	44	482	479

Nevada -- Assaults by Agency/Weapon/Assignment -- UCR

NOVEMBER 2003

Table 16

#

Agency	Total Assaults	Number Cleared	Firearm	Knife / Cutting Device	Other Danger. Weapon	Hands, Fists, Feet, Etc.	2-Officer Vehicle	1-Officer Vehicle- Alone	1-Officer Vehicle- Assisted	Det./Spec. Assign. - Alone	Det./Spec. Assign. - Assisted	Other- Alone	Other- Assisted
Boulder City PD	0	0	0	0	0	0	0	0	0	0	0	0	0
Carlin PD	0	0	0	0	0	0	0	0	0	0	0	0	0
Carson City SO	0	0	0	0	0	0	0	0	0	0	0	0	0
Churchill Co SO	0	0	0	0	0	0	0	0	0	0	0	0	0
Clark School Dist PD	0	0	0	0	0	0	0	0	0	0	0	0	0
Douglas Co SO	1	1	0	0	0	1	0	1	0	0	0	0	0
Elko PD	0	0	0	0	0	0	0	0	0	0	0	0	0
Elko Co SO	0	0	0	0	0	0	0	0	0	0	0	0	0
Esmeralda Co SO	0	0	0	0	0	0	0	0	0	0	0	0	0
Eureka Co SO	0	0	0	0	0	0	0	0	0	0	0	0	0
Fallon PD	0	0	0	0	0	0	0	0	0	0	0	0	0
Henderson PD	0	0	0	0	0	0	0	0	0	0	0	0	0
NV Highway Patrol	1	1	0	0	0	1	0	0	1	0	0	0	0
Humboldt Co SO	0	0	0	0	0	0	0	0	0	0	0	0	0
Lander Co SO	0	0	0	0	0	0	0	0	0	0	0	0	0
Lincoln Co SO	0	0	0	0	0	0	0	0	0	0	0	0	0
Lovelock PD	0	0	0	0	0	0	0	0	0	0	0	0	0
Las Vegas Fire Dept	0	0	0	0	0	0	0	0	0	0	0	0	0
Las Vegas Metro PD	24	24	2	0	3	19	10	4	5	2	0	2	1
Lyon Co SO	2	2	0	0	0	2	0	1	1	0	0	0	0
Mesquite PD	0	0	0	0	0	0	0	0	0	0	0	0	0
Mineral Co SO	0	0	0	0	0	0	0	0	0	0	0	0	0
NV Div of Investigations	0	0	0	0	0	0	0	0	0	0	0	0	0
North Las Vegas PD	3	3	1	0	0	2	2	0	1	0	0	0	0
Nye Co SO	1	1	0	0	0	1	0	0	1	0	0	0	0
Pershing Co SO	0	0	0	0	0	0	0	0	0	0	0	0	0
Reno PD	1	1	0	0	0	1	0	0	0	0	1	0	0
Sparks PD	0	0	0	0	0	0	0	0	0	0	0	0	0
Storey Co SO	0	0	0	0	0	0	0	0	0	0	0	0	0
TMCC PD	0	0	0	0	0	0	0	0	0	0	0	0	0
UNLV PD	0	0	0	0	0	0	0	0	0	0	0	0	0
UNR PD	0	0	0	0	0	0	0	0	0	0	0	0	0
Washoe Co SO	0	0	0	0	0	0	0	0	0	0	0	0	0
Washoe Co School PD	0	0	0	0	0	0	0	0	0	0	0	0	0
West Wendover PD	0	0	0	0	0	0	0	0	0	0	0	0	0
White Pine Co SO	1	1	0	0	0	1	0	0	1	0	0	0	0
Winnemucca PD	0	0	0	0	0	0	0	0	0	0	0	0	0
Yerington PD	0	0	0	0	0	0	0	0	0	0	0	0	0
TOTALS	34	34	3	0	3	28	12	6	10	2	1	2	1

Nevada -- Officer Assaults by Activity/Weapon/Assignment -- UCR

NOVEMBER 2003

Table 17

ACTIVITY TYPE	Total Assaults	Number Cleared	Firearm	Knife / Cutting Device	Other Danger. Weapon	Hands, Fists, Feet, Etc.	2-Officer Vehicle	1-Officer Vehicle- Alone	1-Officer Vehicle- Assisted	Det./Spec. Assign.- Alone	Det./Spec. Assign.- Assisted	Other- Alone	Other- Assisted
DOMESTIC / OTHER DISTURBANCE	16	16	1	0	1	14	10	2	2	0	0	2	0
BURGLARY IN PROGRESS	0	0	0	0	0	0	0	0	0	0	0	0	0
ROBBERY IN PROGRESS	1	1	0	0	0	1	1	0	0	0	0	0	0
ATTEMPTING OTHER ARREST	2	2	0	0	0	2	1	0	0	0	1	0	0
CIVIL DISORDER	0	0	0	0	0	0	0	0	0	0	0	0	0
HANDLING PRISONER	4	4	0	0	0	4	0	0	3	0	0	0	1
INVEST. SUSP. PERSONS / CIRCUM.	1	1	0	0	0	1	0	0	1	0	0	0	0
AMBUSH-NO WARNING	0	0	0	0	0	0	0	0	0	0	0	0	0
MENTALLY DERANGED	0	0	0	0	0	0	0	0	0	0	0	0	0
TRAFFIC PURSUITS / STOPS	5	5	0	0	2	3	0	3	2	0	0	0	0
ALL OTHER	5	5	2	0	0	3	0	1	2	2	0	0	0
TOTALS	34	34	3	0	3	28	12	6	10	2	1	2	1

29

Nevada--Assaults with Injury/without Injury--UCR

NOVEMBER 2003

Agency	Total Assaults by weapon		Firearm		Cutting Instruments		Other Dangerous weapons		Hands, Fists, Feet, Etc.	
	With personal injury	Without personal injury	With personal injury	Without personal injury	With personal injury	Without personal injury	With personal injury	Without personal injury	With personal injury	Without personal injury
Boulder City PD	0	0	0	0	0	0	0	0	0	0
Carlin PD	0	0	0	0	0	0	0	0	0	0
Carson City SO	0	0	0	0	0	0	0	0	0	0
Churchill Co SO	0	0	0	0	0	0	0	0	0	0
Clark Co Schl Dist PD	0	0	0	0	0	0	0	0	0	0
Douglas Co SO	1	1	0	0	0	0	0	0	1	0
Elko Co SO	0	0	0	0	0	0	0	0	0	0
Elko PD	0	0	0	0	0	0	0	0	0	0
Esmeralda Co SO	0	0	0	0	0	0	0	0	0	0
Eureka Co SO	0	0	0	0	0	0	0	0	0	0
Fallon PD	0	0	0	0	0	0	0	0	0	0
Henderson PD	0	0	0	0	0	0	0	0	0	0
NV Highway Patrol	1	0	1	0	0	0	0	0	0	1
Humboldt Co SO	0	0	0	0	0	0	0	0	0	0
Lander Co SO	0	0	0	0	0	0	0	0	0	0
Las Vegas Metro PD	24	2	22	0	2	0	0	3	2	17
Lincoln Co SO	0	0	0	0	0	0	0	0	0	0
Lovelock PD	0	0	0	0	0	0	0	0	0	0
Lyon Co SO	2	0	2	0	0	0	0	0	0	2
Mesquite PD	0	0	0	0	0	0	0	0	0	0
Mineral Co SO	0	0	0	0	0	0	0	0	0	0
NV Div Investigations	0	0	0	0	0	0	0	0	0	0
North Las Vegas PD	3	0	3	0	1	0	0	0	0	2
Nye Co SO	1	0	1	0	0	0	0	0	0	1
Pershing Co SO	0	0	0	0	0	0	0	0	0	0
Reno PD	1	1	0	0	0	0	0	0	1	0
Sparks PD	0	0	0	0	0	0	0	0	0	0
Storey Co SO	0	0	0	0	0	0	0	0	0	0
TMCC PD	0	0	0	0	0	0	0	0	0	0
UNLV PD	0	0	0	0	0	0	0	0	0	0
UNR PD	0	0	0	0	0	0	0	0	0	0
Washoe Co SO	0	0	0	0	0	0	0	0	0	0
Washoe Co School Dist.	0	0	0	0	0	0	0	0	0	0
West Wendover PD	0	0	0	0	0	0	0	0	0	0
White Pine Co SO	1	1	0	0	0	0	0	0	1	0
Winnemucca PD	0	0	0	0	0	0	0	0	0	0
Yerington PD	0	0	0	0	0	0	0	0	0	0
Totals	34	5	29	0	3	0	0	3	5	23

Nevada--Time of Assaults on Officers--UCR

NOVEMBER 2003

Agency	2:00 AM	4:00 AM	6:00 AM	8:00 AM	10:00 AM	12:00 AM	12:01- 2:00 PM	2:00- 4:00 PM	4:00- 6:00 PM	6:00- 8:00 PM	10:00 PM	10:00- 12:00 PM
Boulder City PD	0	0	0	0	0	0	0	0	0	0	0	0
Carlin PD	0	0	0	0	0	0	0	0	0	0	0	0
Carson City SO	0	0	0	0	0	0	0	0	0	0	0	0
Churchill Co SO	0	0	0	0	0	0	0	0	0	0	0	0
Clark Co Schl Dist PD	0	0	0	0	0	0	0	0	0	0	0	0
Douglas Co SO	0	0	0	0	0	0	0	0	1	0	0	0
Elko Co SO	0	0	0	0	0	0	0	0	0	0	0	0
Elko PD	0	0	0	0	0	0	0	0	0	0	0	0
Esmeralda Co SO	0	0	0	0	0	0	0	0	0	0	0	0
Eureka Co SO	0	0	0	0	0	0	0	0	0	0	0	0
Fallon PD	0	0	0	0	0	0	0	0	0	0	0	0
Henderson PD	0	0	0	0	0	0	0	0	0	0	0	0
Highway Patrol	0	0	0	0	0	0	0	0	0	0	1	0
Humbolt Co SO	0	0	0	0	0	0	0	0	0	0	0	0
Lander Co SO	0	0	0	0	0	0	0	0	0	0	0	0
Las Vegas Metro PD	3	0	0	0	2	4	6	1	0	1	2	5
Lincoln Co SO	0	0	0	0	0	0	0	0	0	0	0	0
Lovelock PD	0	0	0	0	0	0	0	0	0	0	0	0
Lyon Co SO	0	0	0	0	2	0	0	0	0	0	0	0
Mesquite PD	0	0	0	0	0	0	0	0	0	0	0	0
Mineral Co SO	0	0	0	0	0	0	0	0	0	0	0	0
NV Div Investigations	0	0	0	0	0	0	0	0	0	0	0	0
North LV PD	0	0	0	0	0	0	1	1	0	0	1	0
Nye Co SO	1	0	0	0	0	0	0	0	0	0	0	0
Pershing Co SO	0	0	0	0	0	0	0	0	0	0	0	0
Reno PD	0	0	0	0	0	0	1	0	0	0	0	0
Sparks PD	0	0	0	0	0	0	0	0	0	0	0	0
Storey Co SO	0	0	0	0	0	0	0	0	0	0	0	0
TMCC PD	0	0	0	0	0	0	0	0	0	0	0	0
UNLV PD	0	0	0	0	0	0	0	0	0	0	0	0
UNR PD	0	0	0	0	0	0	0	0	0	0	0	0
Washoe Co SO	0	0	0	0	0	0	0	0	0	0	0	0
Washoe Co Schl PD	0	0	0	0	0	0	0	0	0	0	0	0
West Wendover PD	0	0	0	0	0	0	0	0	0	0	0	0
White Pine Co SO	1	0	0	0	1	0	0	0	0	0	0	0
Winnemucca PD	0	0	0	0	0	0	0	0	0	0	0	0
Yerington PD	0	0	0	0	0	0	0	0	0	0	0	0
Totals	5	0	0	0	5	4	8	2	1	1	4	5

Nevada -- Division Of Investigations

Arrests for Narcotics Violations

November 2003

		10- 13-				23- 25-		30- 35-		40- 45-		50- 55-		60-		Total	W	B	A	I																																																																																		
		<10	12	14	15	16	17	18	19	20	21	22	24	29	34	39	44	49	54	59	64	>64																																																																																
SALES/MANUFACTURING VIOLATIONS																																																																																																						
Opium or cocaine and their derivatives (morphine, heroin codeine)	M																							2	2																																																																													
	F																							0																																																																														
Marijuana	M																							1	1	1																							3	3																																																				
	F																							1																							1																							1																																
Synthetic narcotics- Manufactured narcotics that can cause true drug addiction (demerol, meth)	M																																													0																																																								
	F																																													0																																																								
Other dangerous, non-narcotic, drugs (barbituates, benzderine)	M																							1	3	1	2	1	5	2	1																							16	16																																															
	F																																													1																							3	3																																
Sub-Total	M	0	0	0	0	0	0	1	1	4	1	3	1	7	2	0	1	0	0	0	0	0	0	21	21	0	0	0																																																																										
	F	0	0	0	0	0	0	1	0	0	0	0	1	0	2	0	0	0	0	0	0	0	4	3	0	0	0	1																																																																										
POSSESSION VIOLATIONS																																																																																																						
Opium or cocaine and their derivatives (morphine, heroin codeine)	M																							0																																																																														
	F																							0																																																																														
Marijuana	M																							1	1																							1	1	1																							5	5																												
	F																																													1	1	1																							3	3																														
Synthetic narcotics- Manufactured narcotics that can cause true drug addiction (demerol, meth)	M																																													0																																																								
	F																																													0																																																								
Other dangerous, non-narcotic, drugs (barbituates, benzderine)	M																																													1																							2	1																							4	4								
	F																							1	1																							1	1	1																							5	5																												
Sub-Total	M	0	0	0	0	0	1	1	0	0	0	1	1	1	2	1	1	0	0	0	0	0	9	9	0	0	0	0																																																																										
	F	0	0	0	0	0	0	1	1	2	0	1	0	1	1	1	0	0	0	0	0	0	8	8	0	0	0	0																																																																										
Total		0	0	0	0	0	1	2	3	5	3	4	3	9	5	4	3	0	0	0	0	0	42	41	0	0	0	1																																																																										

Nevada UCR
*Footnotes / Exceptions

NOVEMBER 2003

Table 1

--Nevada figures are annualized projections.

--"Assault" does not include simple assaults to allow direct comparison between the Nevada rate and the National rate for this Index offense. See Table 8 for a count of all assaults.

Table 2

--The LV Fire Department reports "Arson" offenses for the City of Las Vegas. The population figure for this agency represents jurisdiction and is not added to the county total. Similarly, the School District Police Departments in Clark and Washoe Counties are not added to county population estimates as they represent persons served (student enrollment plus staff.)

--Assault data in this table includes ALL assaults (aggravated and simple) reported for the current month.

--County crime rates are calculated following subtraction of populations of jurisdictions failing to report.

Table 3

-- In the "Nevada vs National Index Crime and Clearance Rates" sections, the "Assaults" numbers do not include simple assaults following FBI guidelines. Therefore, they may be compared directly to National rates.

-- National crime rate figures are the latest available for comparative use (2000). Nevada figures are annualized projections.

Table 13

--At various times, property values recovered will exceed values stolen for the current reporting period.

General Notes:

■ The following agency(ies) was unable to submit reports for this month:

-- Any late reports not submitted in time for this publication will be incorporated in to the year-to-date totals in subsequent reports.