

Disclaimer: The following information is preliminary and cannot be certified until it is published in the annual report, Crime and Justice in Nevada, which will be available after July 1, 2004.

UNIFORM CRIME REPORTING PROGRAM
UCR STATISTICAL DATA VERIFICATION FORM

As an agency administrator or designee for the _____, I have
(Name of Agency)
reviewed the UCR monthly statistics for **December 2003** which includes all UCR data
submitted year to date. Based upon my or my designee's review and validation of same, I find
that:

All data contained in the report for my agency is accurate and complete and may be
released and made part of UCR publications for future distribution to the public and other
interested UCR data subscribers.

Data contained in the report is inaccurate or incomplete and may not be published or
released at this time. (If this choice is selected, please provide the reason in the space
provided below.)

Reason: _____

The corrected data will be supplied to the UCR Program by: _____.
(Date)

This document must be signed and mailed to the Uniform Crime Reporting Program, 808 W.
Nye Lane, Carson City, Nevada 89703 or faxed to (775) 687-1843 by **July 15, 2004.**

Signature of Agency Administrator (or designee)

Name/Title of Agency Administrator (print or type)

Agency's Name/Location

Date

Department of Public Safety
Nevada Highway Patrol
Records and Identification Bureau

Monthly Report



DECEMBER

2003

**George Togliatti, Director
Department of Public Safety**

**Colonel David Hosmer, Chief
Nevada Highway Patrol**

**Daryl Riersgard, Manager
Records and Identification Bureau**

**Phyllis Yancey, Administrative Assistant II
Tenna Herman, Management Analyst I**

**Prepared by:
Records and Identification Bureau
Uniform Crime Reporting
808 W. Nye Lane
Carson City, Nevada 89703
(775) 687-1600**

Nevada UCR Definitions / Explanations

Uniform Crime Reporting Program

The UCR program is a nationwide, cooperative, statistical effort by over 17,000 city, county and state law enforcement agencies that voluntarily report data on crimes brought to their attention. Law enforcement agencies active in the national program represent 95% of the total population of the United States. While the program's primary objective is to generate a reliable set of crime statistics for use in law enforcement administration, operation and management, its data has over the years become one of the country's leading social indicators.

In Nevada, 36 agencies are currently reporting UCR data to the statewide program representing nearly 99% of its population. Rather than submitting directly to the FBI, local agencies must submit crime data to the state UCR Repository, which compiles, analyzes and submits copies of the reports to the FBI. The Nevada UCR Program prides itself on its responsiveness to local contributing agencies that previously received limited feedback for their efforts. The Nevada program is also responsible for producing and distributing periodic reports of the information contained in its database. As its database has grown, the program's utility has become even more apparent.

Eight offenses serve as an index for gauging fluctuations in overall volumes and rates of crime. Known collectively as the " Crime Index, " these offenses include *the violent crimes of murder, rape, robbery and assault and the property crimes of burglary, larceny, motor vehicle theft and arson*. These offenses were selected as a grouped measuring device because they represent the most common crime problems. They are all serious crimes; either by their very nature or due to the volume and frequency with which they occur.

Index Crimes Definitions

Murder and Non-negligent Manslaughter

Murder and non negligent manslaughter, as defined in the Uniform Crime Reporting Program, is the willful (non-negligent) killing of a human being by another.

The classification of this offense, as for all other Crime Index offenses, is based solely on police investigation as opposed to the determination of a court, medical examiner, coroner, jury or other judicial entity. Not included in the count for this offense classification are deaths caused by negligence, suicide or accident, justifiable homicides and attempts to murder or assaults to murder. These are scored as aggravated assaults.

Nevada UCR Definitions / Explanations

Forcible Rape

Forcible rape, as defined in the program, is the carnal knowledge of a female forcibly and against her will. Assaults or attempts to commit rape by force or threat of force are also included; however, statutory rape (without force) and other sex offenses are excluded.

Robbery

Robbery is the taking or attempting to take anything of value from the care, custody or control of a person or persons by force or threat of force or violence and/or by putting the victim in fear.

Aggravated Assault

Aggravated assault is an unlawful attack by one person upon another for the purpose of inflicting severe or aggravated bodily injury. This type of assault is usually accompanied by the use of a weapon or by means likely to produce death or great bodily harm. Attempts are included since it is not necessary that an injury result when a gun, knife or other weapon is used which could and probably would result in serious personal injury if the crime were successfully completed

Burglary

The Uniform Crime Reporting Program defines burglary as the unlawful entry of a structure to commit a felony or theft. The use of force to gain entry is not required to classify an offense as burglary. Burglary in this program is categorized into three sub classifications: forcible entry, unlawful entry where no force is used and attempted forcible entry.

Larceny-Theft

Larceny-theft is the unlawful taking, carrying, leading, or riding away of property from the possession or constructive possession of another. It includes crimes such as shoplifting, pocket picking, purse-snatching, thefts from motor vehicles, thefts of motor vehicle parts and accessories, and bicycle thefts, etc., in which no use of force, violence, or fraud occurs. In the UCR Program, this crime category does not include embezzlement, "con" games, forgery, and worthless checks. Motor vehicle theft is also excluded from this category inasmuch as it is a separate Crime Index offense.

Motor Vehicle Theft

Defined as the theft or attempted theft of a motor vehicle, this offense category includes the stealing of automobiles, trucks, buses, motorcycles, motor scooters, snowmobiles, etc. The definition excludes the taking of a motor vehicle for temporary use by those persons having lawful access.

Nevada UCR

Definitions / Explanations

Arson

Arson is defined by the Uniform Crime Reporting Program as any willful or malicious burning or attempt to burn, with or without intent to defraud, a dwelling house, public building, a motor vehicle or aircraft, personal property of another, etc. Only fires determined through investigation to have been willfully or maliciously set are classified as arsons. Fires of suspicious or unknown origins are excluded.

Population Estimates

State, county and incorporated city population estimates are prepared and reviewed prior to the end of each calendar year for certification by the governor by March 1. The Nevada Department of Taxation and Nevada State Demographer, Bureau of Business and Economic Research, College of Business Administration, University of Nevada, Reno, prepares these estimates.

Crime Rates

Crime rates involve the number of Index Crimes per unit of population, usually per 100,000 persons. Because Nevada has such a low population, a rate per 1,000 persons is used to reflect a more realistic volume. No attempt is made to incorporate transient populations or other factors that contribute to the ratio and types of crime in given areas. Any effort to make comparisons of crime rates between areas should be tempered by these population and environmental variables.

Crime rates are one of the most meaningful statistical elements. Computation of crime rates per 1,000 population is achieved by dividing the community's population by 1,000, then dividing the number of offenses in each class by that number. The answer is the number of offenses per 1,000 population and is the crime rate for that particular offense. In Table 2, the County Total Crime Rate is computed after subtracting the population figure for all non-reporting agencies for the current month.

The index offense "Aggravated Assault" is an item of special interest to users of Nevada's UCR report. In Tables 1 & 3, where Nevada and National crime rates are compared, "simple assaults" are subtracted from the total of all assaults following FBI UCR rules, thus allowing for direct comparison. However, total assaults (simple and aggravated) are also presented in the Nevada report. This is because the Nevada UCR staff believes this figure is an important indicator of risk for citizens and it presents a more balanced picture of this portion of the crime index to law enforcement personnel.

The Federal Bureau of Investigation, Uniform Crime Reporting Section, publishes national rates.

Clearance Rates

The percentage of crimes cleared is obtained by dividing the number of offenses cleared by the number of offenses known. This number is then multiplied by 100.

Nevada--Statewide Summary--UCR Index Crimes

DECEMBER 2003

Offense	Crimes this Month	# Cleared this Month	% Cleared this Month	Crimes this YTD	# Cleared this YTD	% Cleared this YTD	2003 NV			2001 Natl. Rate / 1,000		
							DECEMBER Crimes 2002	DECEMBER Cleared 2002	% DECEMBER Cleared 2002			
Murder	10	10	100	197	99	50	14	8	57	0.09	0.09	0.56
Rape	50	15	30	871	273	31	63	25	40	0.39	0.44	0.32
Robbery	481	106	22	5,215	1,030	20	437	97	22	2.36	2.40	1.48
Assault *	545	197	36	7,528	2,878	38	543	304	56	3.41	3.58	3.19
Burglary	1,920	452	24	21,962	4,893	22	1,721	379	22	9.96	8.89	7.41
Larceny	5,011	1,091	22	53,325	8,581	16	4,265	1,265	30	24.17	22.26	24.85
MV Theft	1,875	227	12	20,849	2,517	12	1,452	221	15	9.45	8.20	4.31
Arson	39	8	21	573	75	13	55	10	18	0.26	0.30	0.35
Total	9,931	2,106	21	110,520	20,346	18	8,550	2,309	27	50.10	46.14	42.47

* The projected Crime Rate for Assaults is computed after subtracting Simple Assaults from the total for all Assaults following FBI guidelines. Therefore, this rate may be compared directly to the National Rate. See Table 3 and the "Footnotes/Exceptions page for further information.

Nevada UCR - - Monthly Crime/ Clearance Summary - - All Crimes

Contributing Agency	Est. Pop	Murder		Rape		Robbery		Assault		Burglary		Larceny		MV Theft		Arson		Total Crimes	Crime Rate	Clearances	Clearance Rate
Carson County																		DECEMBER 2003			
Carson SO	54,844	0	0	0	0	2	2	75	44	51	24	124	25	7	1	0	0	259	4.72	96	37.1%
County Total	54,844	0	0	0	0	2	2	75	44	51	24	124	25	7	1	0	0	259	4.72	96	37.1%
Churchill County																					
Churchill SO	16,939	0	0	1	1	1	0	20	20	8	1	12	4	3	1	1	0	46	2.72	27	58.7%
Fallon PD	8,178	0	0	0	0	0	0	23	15	5	0	32	10	0	1	0	0	60	7.34	26	43.3%
County Total	25,117	0	0	1	1	1	0	43	35	13	1	44	14	3	2	1	0	106	4.22	53	50.0%
Clark County																					
Boulder PD	14,842	0	0	1	0	0	0	4	1	8	0	9	1	3	0	2	1	27	1.82	3	11.1%
Clark Co. Schools PD*	284,512	0	0	0	0	7	4	88	59	17	6	82	12	5	0	3	2	202	0.71	83	41.1%
Henderson	209,486	0	0	6	3	17	4	174	100	130	21	280	38	106	4	7	2	720	3.44	172	23.9%
LV Metro PD	1,176,146	7	7	23	4	350	75	1,795	494	1,121	312	2,849	702	1,330	152	18	0	7,493	6.37	1,746	23.3%
LV Fire Dept*																4	2	4	N/A	2	50.0%
Mesquite	13,216	0	0	0	0	0	0	12	11	0	0	18	3	1	1	0	0	31	2.35	15	48.4%
North Las Vegas PD	135,967	1	2	3	2	31	4	174	112	131	10	239	51	157	15	4	1	740	5.44	197	26.6%
UNLV PD*	26,345	0	0	1	0	0	0	3	1	11	0	15	0	10	0	0	0	40	1.52	1	2.5%
County Total	1,549,657	8	9	34	9	405	87	2,250	778	1,418	349	3,492	807	1,612	172	38	8	9,257	5.97	2,219	24.0%
Douglas County																					
Douglas SO	44,212	0	0	0	0	1	1	47	33	15	1	77	12	9	7	0	0	149	3.37	54	36.2%
County Total	44,212	0	0	0	0	1	1	47	33	15	1	77	12	9	7	0	0	149	3.37	54	36.2%

*Population figure not included in county total
Table 2

Nevada UCR - - Monthly Crime/ Clearance Summary - - All Crimes

Contributing Agency	Est. Pop	Murder		Rape		Robbery		Assault		Burglary		Larceny		MV Theft		Arson		Total Crimes	Crime Rate	Clearances	Clearance Rate
Elko County																		DECEMBER 2003			
Elko SO	23,153	0	0	2	1	1	0	4	2	6	0	8	1	2	1	0	0	23	0.99	5	21.7%
Carlin PD	2,074	0	0	0	0	0	0	3	3	0	0	3	1	1	0	0	0	7	3.38	4	57.1%
Elko PD	16,690	0	0	0	0	0	0	29	19	14	3	36	7	1	2	0	0	80	4.79	31	38.8%
WestWendover PD	4,661	0	0	0	0	0	0	3	3	2	1	9	1	1	1	0	0	15	3.22	6	40.0%
County Total	46,578	0	0	2	1	1	0	39	27	22	4	56	10	5	4	0	0	125	2.68	46	36.8%
Esmeralda County																					
Esmeralda SO	1,125	0	0	0	0	0	0	0	0	0	0	0	0	0	0	0	0	0	0.00	0	0.0%
County Total	1,125	0	0	0	0	0	0	0	0	0	0	0	0	0	0	0	0	0	0.00	0	0.0%
Eureka County																					
Eureka SO	1,384	0	0	0	0	0	0	2	0	0	0	1	1	0	0	0	0	3	2.17	1	33.3%
County Total	1,384	0	0	0	0	0	0	2	0	0	0	1	1	0	0	0	0	3	2.17	1	33.3%
Humboldt County																					
Humboldt SO	9,074	0	0	0	0	0	0	2	2	1	0	4	0	2	0	0	0	9	0.99	2	22.2%
Winnemucca PD	7,234	1	1	0	0	1	1	8	7	4	2	7	0	3	2	0	0	24	3.32	13	54.2%
County Total	16,308	1	1	0	0	1	1	10	9	5	2	11	0	5	2	0	0	33	2.02	15	45.5%

*Population figure not included in county total
Table 2

Nevada UCR - - Monthly Crime/ Clearance Summary - - All Crimes

Contributing Agency	Est. Pop	Murder		Rape		Robbery		Assault		Burglary		Larceny		MV Theft		Arson		Total Crimes	Crime Rate	Clearances	Clearance Rate
Lander County																		DECEMBER 2003			
Lander SO	5,547	0	0	0	0	1	0	5	2	0	0	4	1	0	0	0	0	10	1.80	3	30.0%
County Total	5,547	0	0	0	0	1	0	5	2	0	0	4	1	0	0	0	0	10	1.80	3	30.0%
Lincoln County																					
Lincoln SO	3,879	0	0	0	0	0	0	0	0	1	0	0	0	0	0	0	0	1	0.26	0	0.0%
County Total	3,879	0	0	0	0	0	0	0	0	1	0	0	0	0	0	0	0	1	0.26	0	0.0%
Lyon County																					
Lyon SO	35,917	0	0	3	2	1	0	38	37	21	0	43	9	4	0	0	0	110	3.06	48	43.6%
Yerington PD	2,859	0	0	0	0	0	0	3	6	4	5	6	2	0	0	0	0	13	4.55	13	100.0%
County Total	38,776	0	0	3	2	1	0	41	43	25	5	49	11	4	0	0	0	123	3.17	61	49.6%
Mineral County																					
Mineral SO	4,695	0	0	0	0	0	0	2	2	0	0	1	0	2	2	0	0	5	1.06	4	80.0%
County Total	4,695	0	0	0	0	0	0	2	2	0	0	1	0	2	2	0	0	5	1.06	4	80.0%
Nye County																					
Nye SO	35,039	0	0	0	0	1	1	63	63	55	27	48	21	10	4	0	0	177	5.05	116	65.5%
County Total	35,039	0	0	0	0	1	1	63	63	55	27	48	21	10	4	0	0	177	5.05	116	65.5%

*Population figure not included in county total
Table 2

Nevada UCR - - Monthly Crime/ Clearance Summary - - All Crimes

Contributing Agency	Est. Pop	Murder		Rape		Robbery		Assault		Burglary		Larceny		MV Theft		Arson		Total Crimes	Crime Rate	Clearances	Clearance Rate
Pershing County																		DECEMBER 2003			
Pershing SO	4,670	0	0	0	0	0	0	6	3	0	0	4	0	1	0	0	0	11	2.36	3	27.3%
Lovelock PD	2,267	0	0	0	0	0	0	3	3	1	0	2	3	0	0	0	0	6	2.65	6	100.0%
County Total	6,937	0	0	0	0	0	0	9	6	1	0	6	3	1	0	0	0	17	2.45	9	52.9%
Storey County																					
Storey	3,639	0	0	0	0	0	0	1	1	1	2	2	0	1	1	0	0	5	1.37	4	80.0%
County Total	3,639	0	0	0	0	0	0	1	1	1	2	2	0	1	1	0	0	5	1.37	4	80.0%
Washoe County																					
Washoe SO	96,334	0	0	0	0	5	0	79	55	42	4	98	5	15	2	0	0	239	2.48	66	27.6%
Reno PD	187,834	0	0	7	2	50	12	312	143	187	17	707	144	151	18	0	0	1,414	7.53	336	23.8%
Sparks PD	75,255	1	0	2	0	12	2	90	62	77	11	244	33	47	12	0	0	473	6.29	120	25.4%
UNR PD*	15,000	0	0	1	0	0	0	1	0	4	3	24	1	2	0	0	0	32	2.13	4	12.5%
Washoe Co SchI PD*	66,515	0	0	0	0	0	0	0	0	2	2	13	2	0	0	0	0	15	0.23	4	26.7%
TMCC PD*	11,878	0	0	0	0	0	0	0	0	0	0	1	0	0	0	0	0	1	0.08	0	0.0%
County Total	359,423	1	0	10	2	67	14	482	260	312	37	1,087	185	215	32	0	0	2,174	6.05	530	24.4%
White Pine County																					
White Pine SO	8,863	0	0	0	0	0	0	6	6	1	0	9	1	1	0	0	0	17	1.92	7	41.2%
County Total	8,863	0	0	0	0	0	0	6	6	1	0	9	1	1	0	0	0	17	1.92	7	41.2%
Grand Total	2,206,023	10	10	50	15	481	106	3,075	1,309	1,920	452	5,011	1,091	1,875	227	39	8	12,461	5.65	3,218	25.8%

*Population figure not included in county total
Table 2

Nevada UCR - - **Monthly Crimes/Clearances Summary** - - Index Crimes

DECEMBER 2003

	Est. Pop	Murder		Rape		Robbery		Assault		Burglary		Larceny		MV Theft		Arson		Total Crimes	Crime Rate	Total Clear	Clearance Rate
Statewide Totals																					
(Crimes/Clearances)	2,206,023	10	10	50	15	481	106	545	197	1920	452	5011	1091	1875	227	39	8	9931	4.50	2106	21.21

Nevada (Projected 2003) vs National (2001) Index Crime Rates

(per 1,000 population)

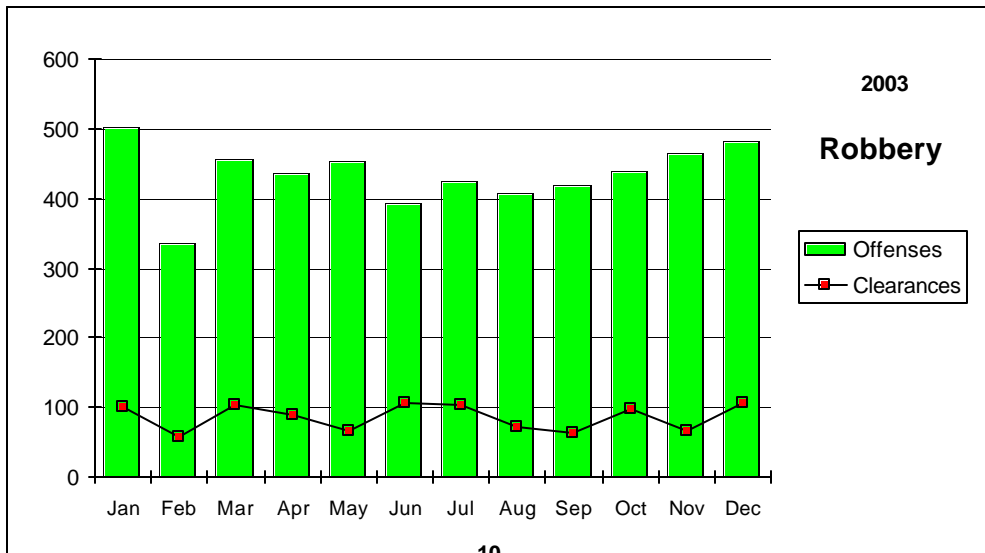
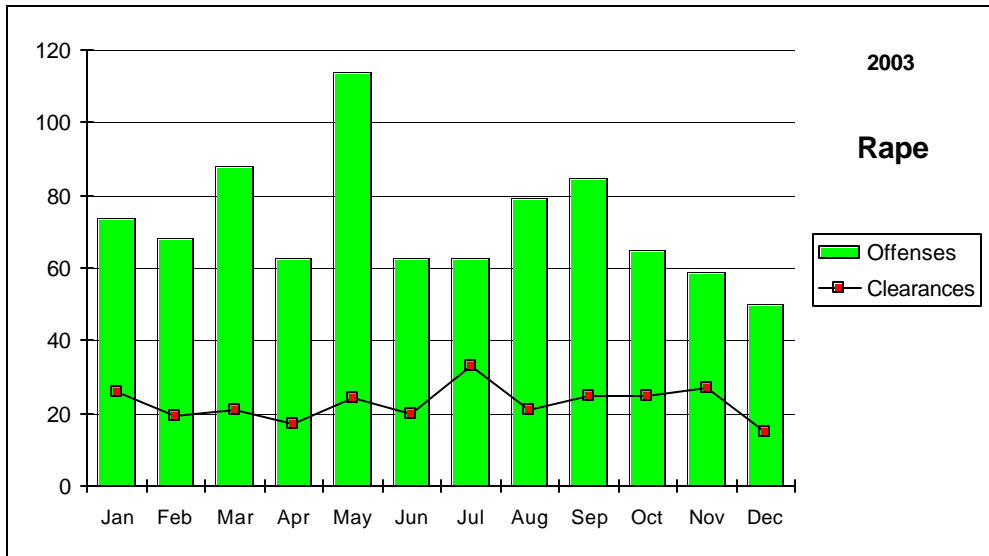
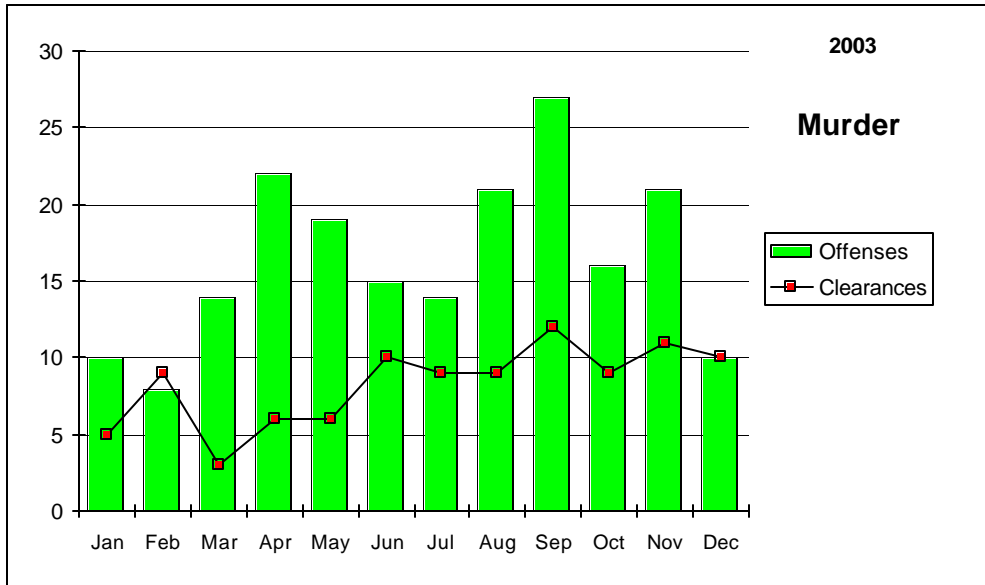
	Murder	Rape	Robbery	Assault	Burglary	Larceny	MV Theft	Arson	Crime Rate
Nevada	0.09	0.39	2.36	3.41	9.96	24.17	9.45	0.26	50.10
National	0.56	0.32	1.48	3.19	7.41	24.85	4.31	0.35	41.85

Nevada (Projected 2003) vs National (2001) Crime Clearance Rates

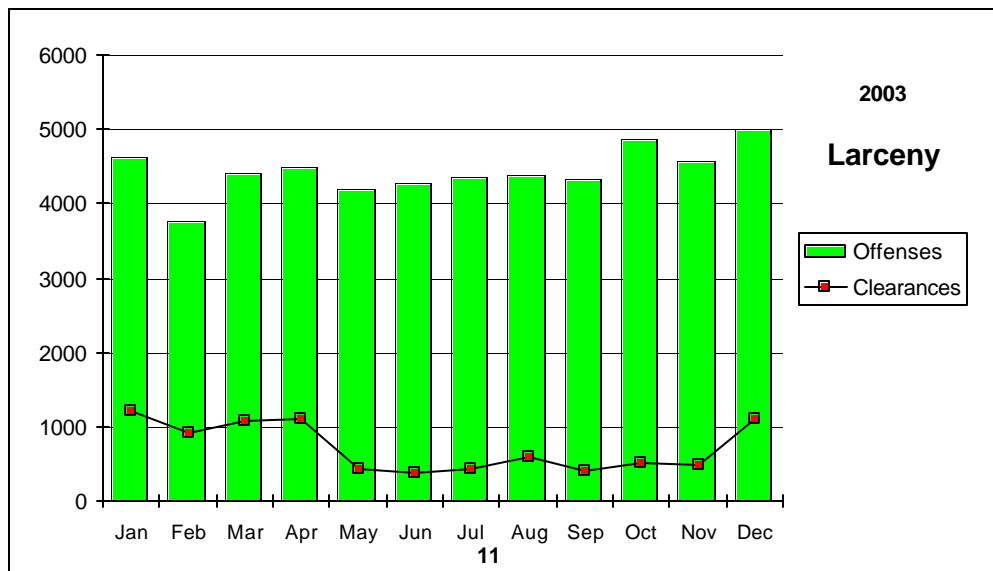
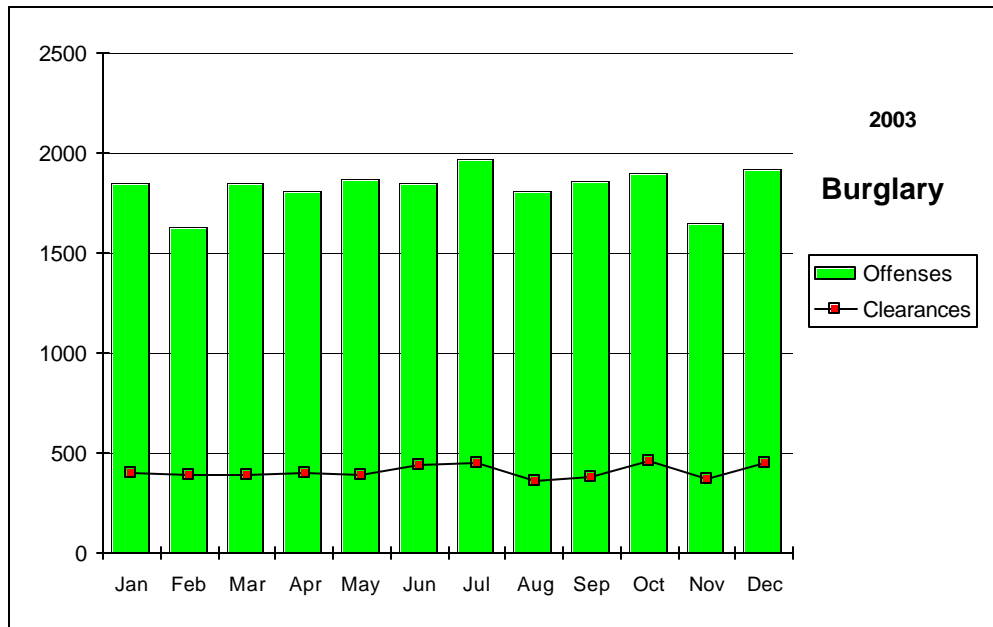
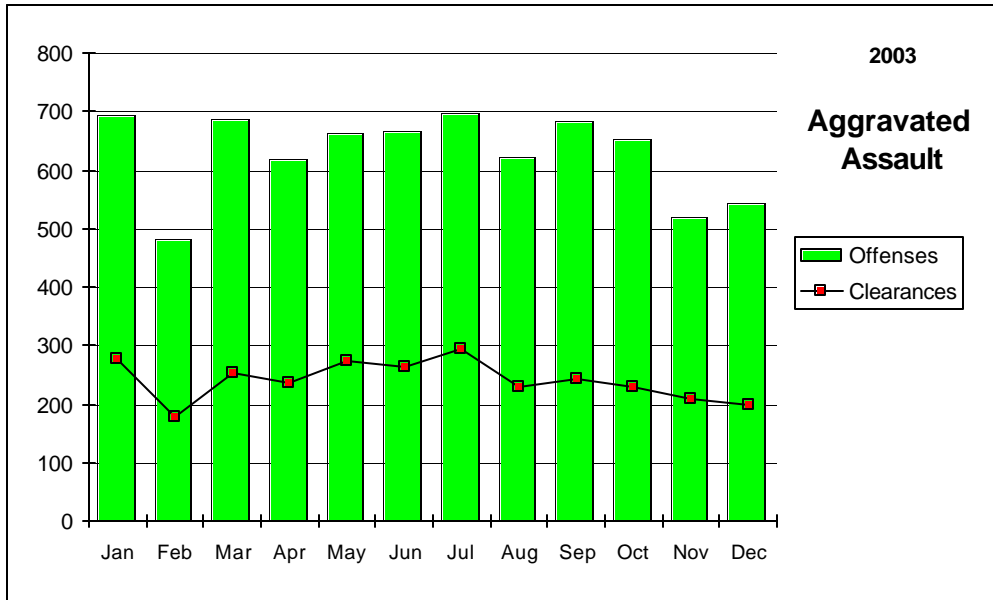
(by Percent)

	Murder	Rape	Robbery	Assault	Burglary	Larceny	MV Theft	Arson	Clear Rate
Nevada	50.25	31.34	19.75	38.23	22.28	16.09	12.07	13.09	18.13
National	62.40	44.30	24.90	56.10	12.70	17.60	13.60	16.00	19.60

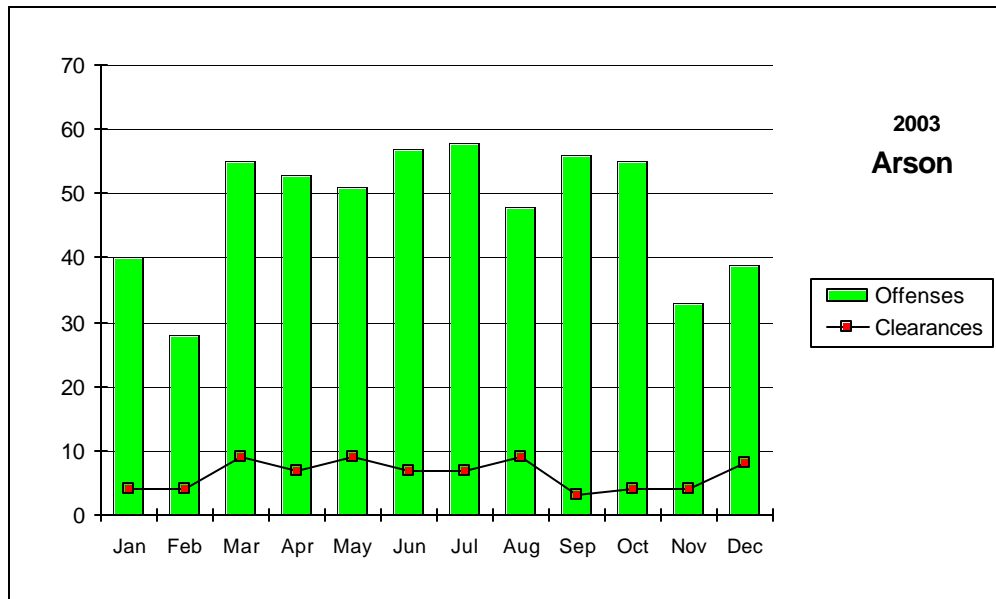
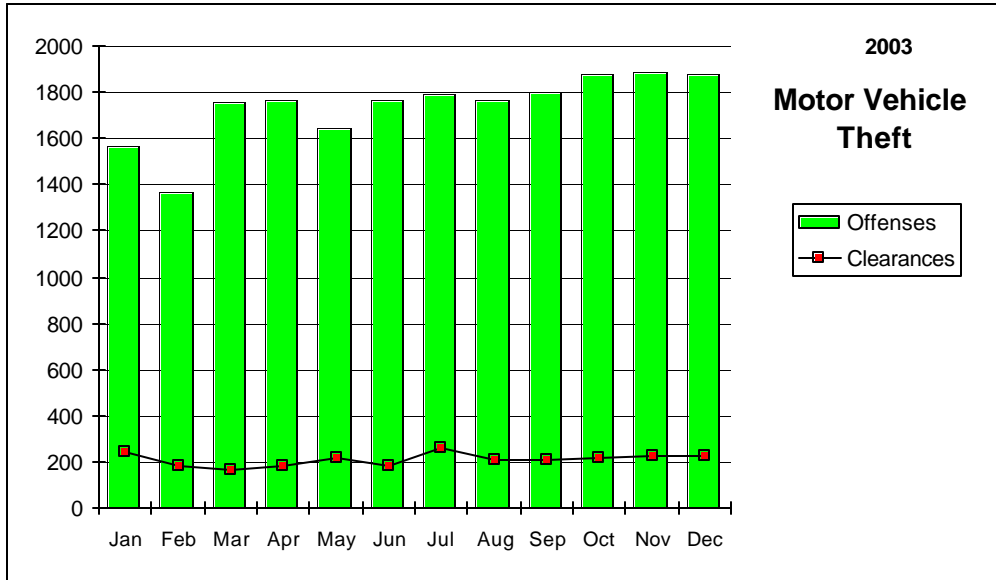
Nevada--Graphic Summary--UCR



Nevada--Graphic Summary--UCR



Nevada--Graphic Summary--UCR



Nevada--Murder--Incidence Level Variation--UCR

DECEMBER 2003

Agency	DECEMBER 2003 Offenses	DECEMBER 2003 Cleared	YTD Offense s	2003 YTD Cleared	DECEMBER 2002 Offenses	DECEMBER 2002 Cleared	YTD Offense s	2002 YTD Cleared
Boulder	0	0	2	0	0	0	0	0
Carlin PD	0	0	0	0	0	0	0	0
Carson SO	0	0	0	0	0	0	1	1
Churchill SO	0	0	0	0	0	0	0	0
Clark Co Schl PD	0	0	0	0	0	0	0	0
Douglas SO	0	0	0	0	0	0	1	1
Elko PD	0	0	0	0	0	0	1	0
Elko SO	0	0	1	1	0	0	1	1
Esmeralda SO	0	0	0	0	0	0	0	0
Eureka SO	0	0	0	0	0	0	0	0
Fallon PD	0	0	0	0	0	0	0	0
Henderson PD	0	0	10	5	0	0	5	4
Humboldt SO	0	0	0	0	0	0	0	0
Lander SO	0	0	0	0	0	0	0	0
Lincoln SO	0	0	0	0	0	0	0	0
Lovelock PD	0	0	0	0	0	0	0	0
LV Fire Dept	0	0	0	0	0	0	0	0
LV Metro	7	7	141	62	13	4	138	74
Lyon SO	0	0	1	1	0	0	0	0
Mesquite PD	0	0	1	0	0	0	0	0
Mineral SO	0	0	0	0	0	0	1	1
NLVPD	1	2	18	11	0	0	19	5
Nye SO	0	0	0	0	0	0	2	1
Pershing SO	0	0	1	1	0	0	0	0
Reno PD	0	0	11	9	0	0	9	8
Sparks PD	1	0	4	5	0	0	2	5
Storey SO	0	0	0	0	0	0	0	0
TMCC PD	0	0	0	0	0	0	0	0
UNLV PD	0	0	0	0	0	0	0	0
UNR PD	0	0	0	0	0	0	0	0
Washoe SO	0	0	6	3	0	0	1	0
Washoe Co Schl PD	0	0	0	0	0	0	0	0
Wendover PD	0	0	0	0	0	0	1	1
White Pine SO	0	0	0	0	2	2	2	2
Winnemucca PD	1	1	1	1	0	0	0	0
Yerington PD	0	0	0	0	0	0	0	0
TOTALS	10	10	197	99	15	6	184	104

Nevada--Rape--Incidence Level Variation--UCR

DECEMBER 2003

Agency	DECEMBER 2003 Offenses	DECEMBER 2003 Cleared	YTD Offense s	2003 YTD Cleared	DECEMBER 2002 Offenses	DECEMBER 2002 Cleared	YTD Offense s	2002 YTD Cleared
Boulder	1	0	1	0	0	0	0	0
Carlin PD	0	0	0	0	0	0	0	0
Carson SO	0	0	1	0	0	0	29	6
Churchill SO	1	1	15	7	1	1	20	12
Clark Co Schl PD	0	0	0	0	0	0	0	0
Douglas SO	0	0	0	0	0	0	0	0
Elko PD	0	0	5	4	3	0	7	3
Elko SO	2	1	12	7	1	0	7	0
Esmeralda SO	0	0	1	1	0	0	0	0
Eureka SO	0	0	0	0	0	0	0	0
Fallon PD	0	0	1	0	0	0	2	1
Henderson PD	6	3	101	39	10	2	104	38
Humboldt SO	0	0	0	0	0	0	0	0
Lander SO	0	0	3	0	0	0	0	0
Lincoln SO	0	0	1	0	0	0	0	0
Lovelock PD	0	0	-1	0	0	0	2	1
LV Fire Dept	0	0	0	0	0	0	0	0
LV Metro	23	4	511	121	36	3	494	156
Lyon SO	3	2	11	4	0	0	8	2
Mesquite PD	0	0	0	0	0	0	0	0
Mineral SO	0	0	0	0	0	0	1	1
NLVPD	3	2	48	27	9	3	57	25
Nye SO	0	0	2	2	0	0	0	0
Pershing SO	0	0	4	1	0	0	3	1
Reno PD	7	2	89	18	3	1	126	21
Sparks PD	2	0	44	32	3	1	52	54
Storey SO	0	0	0	0	0	0	1	1
TMCC PD	0	0	0	0	0	0	0	0
UNLV PD	1	0	4	1	0	0	2	0
UNR PD	1	0	7	0	0	0	3	0
Washoe SO	0	0	4	3	0	0	6	2
Washoe Co Schl PD	0	0	0	1	0	0	1	0
Wendover PD	0	0	1	0	0	0	2	2
White Pine SO	0	0	2	1	0	0	1	1
Winnemucca PD	0	0	4	4	0	0	2	2
Yerington PD	0	0	0	0	0	0	0	0
TOTALS	50	15	871	273	66	11	930	329

Nevada--Robbery--Incidence Level Variation--UCR

DECEMBER 2003

Agency	DECEMBER 2003 Offenses	DECEMBER 2003 Cleared	YTD Offense s	2003 YTD Cleared	DECEMBER 2002 Offenses	DECEMBER 2002 Cleared	YTD Offense s	2002 YTD Cleared
Boulder	0	0	3	1	3	1	6	2
Carlin PD	0	0	0	0	0	0	1	0
Carson SO	2	2	24	8	5	0	32	11
Churchill SO	1	0	3	0	0	0	1	0
Clark Co Schl PD	7	4	41	19	1	1	20	8
Douglas SO	1	1	8	6	1	0	12	7
Elko PD	0	0	10	3	1	0	6	0
Elko SO	1	0	3	2	0	0	3	2
Esmeralda SO	0	0	0	0	0	0	0	0
Eureka SO	0	0	0	0	0	0	0	0
Fallon PD	0	0	8	2	1	0	5	1
Henderson PD	17	4	165	48	27	3	200	49
Humboldt SO	0	0	0	0	0	0	0	0
Lander SO	1	0	2	0	0	0	1	0
Lincoln SO	0	0	0	0	0	0	1	0
Lovelock PD	0	0	0	0	0	0	0	0
LV Fire Dept	0	0	0	0	0	0	0	0
LV Metro	350	75	3955	673	372	59	3776	671
Lyon SO	1	0	6	2	0	0	1	0
Mesquite PD	0	0	4	2	1	0	4	1
Mineral SO	0	0	0	0	0	0	2	2
NLVPD	31	4	332	53	42	5	449	75
Nye SO	1	1	14	6	1	1	16	10
Pershing SO	0	0	0	0	0	0	1	0
Reno PD	50	12	494	151	46	19	450	132
Sparks PD	12	2	102	36	15	9	102	50
Storey SO	0	0	0	0	0	0	0	0
TMCC PD	0	0	0	0	0	0	0	0
UNLV PD	0	0	3	1	0	0	4	1
UNR PD	0	0	1	0	0	0	0	0
Washoe SO	5	0	24	8	2	1	17	8
Washoe Co Schl PD	0	0	5	5	2	2	4	2
Wendover PD	0	0	2	0	0	0	2	1
White Pine SO	0	0	2	2	0	0	2	1
Winnemucca PD	1	1	4	2	0	0	1	0
Yerington PD	0	0	0	0	0	0	0	0
TOTALS	481	106	5215	1030	520	101	5119	1034

Nevada--Aggravated Assault--Incidence Level Variation--UCR

DECEMBER 2003

Agency	DECEMBER	DECEMBER	2003 YTD	2003 YTD	DECEMBER	DECEMBER	2002 YTD	2002 YTD
	2003	2003			2002	2002		
	Offenses	Cleared	Offenses	Cleared	Offenses	Cleared	Offenses	Cleared
Boulder	1	0	31	14	3	3	55	43
Carlin PD	3	3	12	11	0	0	9	7
Carson SO	24	9	240	131	26	16	242	128
Churchill SO	10	5	60	44	3	3	41	37
Clark Co SchI PD	4	2	47	31	2	2	31	24
Douglas SO	4	2	46	23	3	2	45	27
Elko PD	2	2	14	5	2	2	23	11
Elko SO	3	2	16	12	0	0	19	12
Esmeralda SO	0	0	5	5	0	0	1	1
Eureka SO	1	0	5	2	0	0	5	2
Fallon PD	3	3	12	9	2	2	16	10
Henderson PD	14	7	213	152	19	14	146	120
Humboldt SO	1	1	45	28	4	1	55	33
Lander SO	1	0	27	8	0	0	32	16
Lincoln SO	0	0	1	1	0	0	3	1
Lovelock PD	0	0	13	11	3	3	7	6
LV Fire Dept	0	0	0	0	0	0	0	0
LV Metro	340	84	4551	1028	366	118	4576	1810
Lyon SO	4	3	76	65	4	4	62	59
Mesquite PD	0	0	13	11	2	2	10	9
Mineral SO	0	0	2	2	0	0	3	3
NLVPD	53	35	765	424	46	31	769	423
Nye SO	5	5	86	86	9	9	114	102
Pershing SO	4	2	24	14	2	2	11	9
Reno PD	41	19	661	351	38	32	899	488
Sparks PD	13	8	209	171	14	19	193	187
Storey SO	0	0	2	2	2	2	28	12
TMCC PD	0	0	0	0	0	0	0	0
UNLV PD	1	0	6	3	0	0	6	5
UNR PD	0	0	3	2	0	0	2	2
Washoe SO	10	3	280	176	18	11	171	75
Washoe Co SchI PD	0	0	4	4	0	0	7	7
Wendover PD	1	1	13	12	1	1	11	9
White Pine SO	1	1	29	26	1	1	25	21
Winnemucca PD	1	0	13	11	0	0	8	6
Yerington PD	0	0	4	3	0	1	9	5
TOTALS	545	197	7528	2878	570	281	7634	3710

Nevada--All Assaults--Incidence Level Variation--UCR

DECEMBER 2003

Agency	DECEMBER	DECEMBER	2003 YTD	2003 YTD	DECEMBER	DECEMBER	2002 YTD	2002 YTD
	2003	2003			2002	2002		
	Offenses	Cleared	Offenses	Cleared	Offenses	Cleared	Offenses	Cleared
Boulder	4	1	39	19	10	10	159	66
Carlin PD	3	3	32	27	3	3	20	17
Carson SO	77	37	957	482	75	44	911	495
Churchill SO	19	12	216	171	20	20	241	197
Clark Co Schl PD	88	59	927	580	82	56	864	535
Douglas SO	47	33	574	402	37	29	458	359
Elko PD	29	19	289	134	16	9	242	133
Elko SO	4	2	27	18	1	1	86	59
Esmeralda SO	0	0	6	6	1	1	5	5
Eureka SO	2	0	12	4	0	0	10	4
Fallon PD	16	14	235	167	23	15	224	133
Henderson PD	174	100	2314	1498	164	107	2135	1604
Humboldt SO	2	2	62	40	4	1	62	37
Lander SO	5	2	75	45	0	0	51	25
Lincoln SO	0	0	18	11	0	0	23	14
Lovelock PD	3	3	50	48	6	5	59	56
LV Fire Dept	0	0	0	0	0	0	0	0
LV Metro	1795	494	24313	5216	1679	620	23093	9642
Lyon SO	38	37	471	446	32	32	455	444
Mesquite PD	12	11	190	162	18	16	257	188
Mineral SO	2	2	38	40	3	3	32	32
NLVPD	174	112	2757	1521	195	127	2736	1601
Nye SO	63	63	664	664	48	48	664	619
Pershing SO	6	3	46	30	2	2	28	16
Reno PD	312	143	4369	2234	301	167	4103	2067
Sparks PD	90	62	1509	1245	111	119	1352	1241
Storey SO	1	1	29	15	3	3	31	14
TMCC PD	0	0	2	1	0	0	4	0
UNLV PD	3	1	29	18	0	0	20	17
UNR PD	1	0	25	10	3	0	18	10
Washoe SO	79	55	873	551	64	55	857	572
Washoe Co Schl PD	0	0	20	20	0	0	183	173
Wendover PD	3	3	48	43	2	2	50	38
White Pine SO	6	6	109	94	8	7	88	69
Winnemucca PD	8	7	96	89	10	10	100	92
Yerington PD	3	6	61	55	0	1	11	6
TOTALS	3069	1293	41482	16106	2921	1513	39632	20580

Nevada--Burglary--Incidence Level Variation--UCR

DECEMBER 2003

Agency	DECEMBER 2003 Offenses	DECEMBER 2003 Cleared	YTD Offense s	2003 YTD Cleared	DECEMBER 2002 Offenses	DECEMBER 2002 Cleared	YTD Offense s	2002 YTD Cleared
Boulder	8	0	116	33	5	0	87	11
Carlin PD	0	0	10	5	3	0	15	0
Carson SO	51	24	430	76	31	3	394	58
Churchill SO	8	1	83	20	3	2	58	20
Clark Co Schl PD	17	6	269	51	21	6	283	43
Douglas SO	15	1	256	52	13	2	199	44
Elko PD	14	3	129	14	11	0	149	31
Elko SO	6	0	94	18	14	2	135	23
Esmeralda SO	0	0	6	2	0	0	2	1
Eureka SO	0	0	5	0	0	0	3	0
Fallon PD	5	0	63	11	8	0	56	6
Henderson PD	130	21	1435	187	120	17	1470	215
Humboldt SO	1	0	25	4	3	2	41	9
Lander SO	0	0	31	5	0	0	31	4
Lincoln SO	1	0	22	8	0	0	14	5
Lovelock PD	1	0	25	13	0	0	22	15
LV Fire Dept	0	0	0	0	0	0	0	0
LV Metro	1121	312	12782	3411	966	321	11136	3162
Lyon SO	21	0	229	28	18	5	160	28
Mesquite PD	0	0	10	10	1	2	17	11
Mineral SO	0	0	34	4	3	0	23	4
NLVPD	131	10	1641	166	171	14	1525	140
Nye SO	55	27	534	237	47	26	418	216
Pershing SO	0	0	35	5	4	1	22	1
Reno PD	187	17	1976	190	90	6	1288	132
Sparks PD	77	11	828	208	53	20	673	208
Storey SO	1	2	7	2	0	0	10	2
TMCC PD	0	0	5	0	0	0	7	0
UNLV PD	11	0	132	5	5	0	84	3
UNR PD	4	3	26	5	7	0	39	0
Washoe SO	42	4	498	51	32	3	409	40
Washoe Co Schl PD	2	2	56	10	1	0	12	1
Wendover PD	2	1	20	6	1	0	30	9
White Pine SO	1	0	48	9	3	0	32	2
Winnemucca PD	4	2	52	21	4	1	67	18
Yerington PD	4	5	50	26	5	3	42	25
TOTALS	1920	452	21962	4893	1643	436	18953	4487

Nevada--Larceny--Incidence Level Variation--UCR

DECEMBER 2003

Agency	DECEMBER 2003 Offenses	DECEMBER 2003 Cleared	YTD Offense s	2003 YTD Cleared	DECEMBER 2002 Offense	DECEMBER 2002 Cleared	YTD Offense s	2002 YTD Cleared
Boulder	9	1	140	16	14	0	150	14
Carlin PD	3	1	40	12	2	0	51	7
Carson SO	124	25	1215	244	98	19	1233	162
Churchill SO	12	4	153	48	12	9	152	37
Clark Co SchI PD	82	12	858	117	79	12	733	91
Douglas SO	77	12	760	192	51	11	650	197
Elko PD	36	7	385	52	31	5	419	76
Elko SO	8	1	91	15	7	3	111	19
Esmeralda SO	0	0	2	2	1	1	3	1
Eureka SO	1	1	14	4	0	0	14	3
Fallon PD	32	10	424	84	37	5	429	64
Henderson PD	280	38	2886	574	287	75	2705	645
Humboldt SO	4	0	46	14	1	1	57	15
Lander SO	4	1	40	6	0	0	48	3
Lincoln SO	0	0	34	6	0	0	21	1
Lovelock PD	2	3	36	24	1	1	35	22
LV Fire Dept	0	0	0	0	0	0	0	0
LV Metro	2849	702	30052	3598	2333	384	24204	6728
Lyon SO	43	9	462	105	45	15	388	84
Mesquite PD	18	3	228	72	24	13	173	88
Mineral SO	1	0	20	7	2	2	20	8
NLVPD	239	51	2687	589	212	43	3029	676
Nye SO	48	21	579	300	57	40	594	321
Pershing SO	4	0	51	18	10	2	69	13
Reno PD	707	144	7708	1579	612	161	7748	1484
Sparks PD	244	33	2482	615	202	36	2407	666
Storey SO	2	0	38	3	4	0	36	3
TMCC PD	1	0	12	0	0	0	14	0
UNLV PD	15	0	268	9	12	0	319	13
UNR PD	24	1	153	3	8	0	144	4
Washoe SO	98	5	813	94	64	17	911	171
Washoe Co SchI PD	13	2	246	52	18	7	155	51
Wendover PD	9	1	118	41	8	2	133	32
White Pine SO	9	1	130	27	12	3	122	16
Winnemucca PD	7	0	125	46	17	7	147	50
Yerington PD	6	2	29	13	2	0	37	25
TOTALS	5011	1091	53325	8581	4263	874	47461	11790

Nevada--MV Theft--Incidence Level Variation--UCR

DECEMBER 2003

Agency	DECEMBER 2003 Offenses	DECEMBER 2003 Cleared	YTD Offense s	2003 YTD Cleared	DECEMBER 2002 Offenses	DECEMBER 2002 Cleared	YTD Offense s	2002 YTD Cleared
Boulder	3	0	28	16	1	0	25	14
Carlin PD	1	0	9	4	0	0	5	4
Carson SO	7	1	163	23	22	4	143	22
Churchill SO	3	1	44	25	1	1	26	15
Clark Co Schl PD	5	0	56	5	3	0	49	3
Douglas SO	9	7	58	43	1	1	56	44
Elko PD	1	2	32	6	3	0	28	8
Elko SO	2	1	22	13	2	1	18	12
Esmeralda SO	0	0	0	0	0	0	1	1
Eureka SO	0	0	4	2	0	0	2	2
Fallon PD	0	1	22	6	3	2	25	12
Henderson PD	106	4	1371	68	117	9	1152	81
Humboldt SO	2	0	7	3	0	0	12	8
Lander SO	0	0	7	2	0	0	9	1
Lincoln SO	0	0	10	2	0	0	8	4
Lovelock PD	0	0	0	0	1	0	4	3
LV Fire Dept	0	0	0	0	0	0	0	0
LV Metro	1330	152	14718	1798	1274	127	12489	1833
Lyon SO	4	0	71	18	4	0	47	16
Mesquite PD	1	1	34	14	2	1	39	20
Mineral SO	2	2	2	2	0	0	2	1
NLVPD	157	15	1780	116	110	9	1519	117
Nye SO	10	4	69	36	8	6	75	50
Pershing SO	1	0	5	3	0	0	3	0
Reno PD	151	18	1545	150	92	9	1106	99
Sparks PD	47	12	446	99	23	9	312	108
Storey SO	1	1	3	1	0	0	5	3
TMCC PD	0	0	0	0	0	0	1	0
UNLV PD	10	0	91	6	6	0	71	4
UNR PD	2	0	10	0	1	1	6	1
Washoe SO	15	2	186	30	20	4	193	30
Washoe Co Schl PD	0	0	7	4	0	0	2	1
Wendover PD	1	1	12	10	2	2	15	8
White Pine SO	1	0	20	5	1	0	8	0
Winnemucca PD	3	2	17	7	4	2	26	7
Yerington PD	0	0	0	0	0	0	3	1
TOTALS	1875	227	20849	2517	1701	188	17485	2533

Nevada--Arson--Incidence Level Variation--UCR

DECEMBER 2003

Agency	DECEMBER 2003 Offenses	DECEMBER 2003 Cleared	YTD Offense s	2003 YTD Cleared	DECEMBER 2002 Offenses	DECEMBER 2002 Cleared	YTD Offense s	2002 YTD Cleared
Boulder	2	1	5	2	0	0	3	1
Carlin PD	0	0	0	0	0	0	0	0
Carson SO	0	0	15	1	0	0	17	2
Churchill SO	1	0	2	1	0	0	2	1
Clark Co Schl PD	3	2	68	20	5	2	61	22
Douglas SO	0	0	4	2	0	0	6	4
Elko PD	0	0	3	2	1	0	10	2
Elko SO	0	0	3	1	0	0	1	0
Esmeralda SO	0	0	0	0	0	0	0	0
Eureka SO	0	0	0	0	0	0	1	0
Fallon PD	0	0	0	0	0	0	0	0
Henderson PD	7	2	49	6	2	1	53	15
Humboldt SO	0	0	0	0	0	0	0	0
Lander SO	0	0	0	0	0	0	0	0
Lincoln SO	0	0	0	0	0	0	0	0
Lovelock PD	0	0	0	0	0	0	0	0
LV Fire Dept	4	2	77	10	2	0	134	13
LV Metro	18	0	202	3	9	0	155	0
Lyon SO	0	0	8	4	0	0	5	3
Mesquite PD	0	0	0	0	0	0	0	0
Mineral SO	0	0	0	0	0	0	4	2
NLVPD	4	1	51	7	6	0	68	5
Nye SO	0	0	10	0	5	2	19	10
Pershing SO	0	0	0	0	0	0	0	0
Reno PD	0	0	41	6	3	0	64	10
Sparks PD	0	0	0	0	0	0	0	0
Storey SO	0	0	2	2	0	0	0	0
TMCC PD	0	0	0	0	0	0	0	0
UNLV PD	0	0	1	1	0	0	5	0
UNR PD	0	0	1	0	0	0	1	1
Washoe SO	0	0	6	1	2	0	9	2
Washoe CO Sci PD	0	0	19	3	0	0	5	2
Wendover PD	0	0	2	2	0	0	2	0
White Pine SO	0	0	1	0	0	0	3	2
Winnemucca PD	0	0	3	1	0	0	2	2
Yerington PD	0	0	0	0	0	0	0	0
TOTALS	39	8	573	75	35	5	630	99

Nevada--Hate Crimes--UCR

DECEMBER 2003

AGENCY	OFFENSE	LOCATION	BIAS	VICTIM TYPE / NUMBER	OFFENDER RACE / NUMBER
Las Vegas Metro	Simple Assault	School/College	Anti-White	Individual-1	American Indian-1
Las Vegas Metro	Aggravated Assault	Schoolbus Stop	Anti-Hispanic	Individual-1	Black-02
Las Vegas Metro	Destruction/Damage/Vandalism	Construction Site	Anti-Black	Individual-1	Unknown-00
Las Vegas Metro	Destruction/Damage/Vandalism	Church/Synagogue/Temple	Anti-Homosexual	Business-1	Unknown-00
Las Vegas Metro	Aggravated Assault	Highway/Road/Alley/Street	Anti-Black	Individual-1	White-1
Las Vegas Metro	Simple Assault	Resident/Home	Anti-Black	Individual-1	White-4
Las Vegas Metro	Aggravated Assault	Resident/Home	Anit-Black	Individual-1	White-2
Las Vegas Metro	Intimidation	Bar/Nightclub	Anti-Homosexual	Business-1	Unknown-00
Las Vegas Metro	Aggravated Assault	Bus Stop/Public Transportation	Anti-Homosexual	Individual-1	Black-1

Stolen/Recovered Property Report

DECEMBER 2003

Property Type	Boulder PD	Carlin PD	Carson SO	Churchill SO	Clark Co SchI PD	Douglas SO	Elko PD	Elko SO	Esmeralda SO
Currency									
Stolen	\$700	\$473	\$9,322	\$610	\$2,167	\$10,143	\$6,492	\$288	\$0
Recovered	\$920	\$0	\$0	\$0	\$20	\$634	\$0	\$0	\$0
% Recovered	131.4%	0.0%	0.0%	0.0%	0.9%	6.3%	0.0%	0.0%	0.0%
Jewelry									
Stolen	\$560	\$0	\$4,718	\$9,500	\$1,050	\$1,100	\$63,902	\$0	\$0
Recovered	\$560	\$0	\$0	\$7,500	\$0	\$0	\$202	\$0	\$0
% Recovered	100.0%	0.0%	0.0%	78.9%	0.0%	0.0%	0.3%	0.0%	0.0%
Clothing									
Stolen	\$80	\$0	\$1,970	\$0	\$0	\$2,333	\$413	\$1,000	\$0
Recovered	\$80	\$0	\$38	\$0	\$0	\$32	\$30	\$0	\$0
% Recovered	100.0%	0.0%	1.9%	0.0%	0.0%	1.4%	7.3%	0.0%	0.0%
Motor Vehicle									
Stolen	\$9,053	\$50,000	\$55,850	\$19,800	\$33,700	\$71,050	\$800	\$11,500	\$0
Recovered	\$1,800	\$35,000	\$70,000	\$18,300	\$70,700	\$63,550	\$2,200	\$11,500	\$0
% Recovered	19.9%	70.0%	125.3%	92.4%	209.8%	89.4%	275.0%	100.0%	0.0%
Office Equipment									
Stolen	\$0	\$0	\$14,385	\$0	\$54,000	\$0	\$2,500	\$0	\$0
Recovered	\$0	\$0	\$73	\$0	\$0	\$0	\$0	\$0	\$0
% Recovered	0.0%	0.0%	0.5%	0.0%	0.0%	0.0%	0.0%	0.0%	0.0%
TV, VCR, Camera, Etc.									
Stolen	\$330	\$0	\$27,815	\$0	\$12,651	\$4,518	\$16,835	\$1,020	\$0
Recovered	\$0	\$0	\$0	\$0	\$175	\$308	\$700	\$0	\$0
% Recovered	0.0%	0.0%	0.0%	0.0%	1.4%	6.8%	4.2%	0.0%	0.0%
Firearm									
Stolen	\$0	\$159	\$10,005	\$6,500	\$0	\$100	\$2,950	\$0	\$0
Recovered	\$0	\$0	\$0	\$0	\$0	\$0	\$0	\$0	\$0
% Recovered	0.0%	0.0%	0.0%	0.0%	0.0%	0.0%	0.0%	0.0%	0.0%
Household Goods									
Stolen	\$910	\$0	\$2,600	\$540	\$0	\$0	\$1,929	\$3,300	\$0
Recovered	\$0	\$0	\$0	\$0	\$0	\$0	\$34	\$0	\$0
% Recovered	0.0%	0.0%	0.0%	0.0%	0.0%	0.0%	1.8%	0.0%	0.0%
Consumable Goods									
Stolen	\$0	\$0	\$212	\$622	\$39	\$202	\$315	\$25	\$0
Recovered	\$0	\$0	\$37	\$19	\$0	\$182	\$187	\$25	\$0
% Recovered	0.0%	0.0%	17.5%	3.1%	0.0%	90.1%	59.4%	100.0%	0.0%
Livestock									
Stolen	\$0	\$0	\$450	\$0	\$0	\$0	\$0	\$0	\$0
Recovered	\$0	\$0	\$0	\$0	\$0	\$0	\$0	\$0	\$0
% Recovered	0.0%	0.0%	0.0%	0.0%	0.0%	0.0%	0.0%	0.0%	0.0%
Misc.									
Stolen	\$11,526	\$8,000	\$99,445	\$8,185	\$32,053	\$102,978	\$14,560	\$777	\$0
Recovered	\$700	\$8,000	\$409	\$0	\$3,395	\$431	\$142	\$0	\$0
% Recovered	6.1%	100.0%	0.4%	0.0%	10.6%	0.4%	1.0%	0.0%	0.0%
TOTALS									
Stolen	\$23,159	\$58,632	\$226,772	\$45,757	\$135,660	\$192,424	\$110,696	\$17,910	\$0
Recovered	\$4,060	\$43,000	\$70,557	\$25,819	\$74,290	\$65,137	\$3,495	\$11,525	\$0
% Recovered	17.5%	73.3%	31.1%	56.4%	54.8%	33.9%	3.2%	64.3%	0.0%

Stolen/Recovered Property Report

DECEMBER 2003

Property Type	Eureka SO	Fallon PD	Henderson PD	Humboldt SO	Lander SO	Las Vegas Metro	Lincoln SO	Lovelock PD	Lyon SO
Currency									
Stolen	\$0	\$1,636	\$56,702	\$1,000	\$0	\$1,878,734	\$0	\$30	\$3,608
Recovered	\$0	\$0	\$500	\$0	\$0	\$9,194	\$0	\$0	\$0
% Recovered	0.0%	0.0%	0.9%	0.0%	0.0%	0.5%	0.0%	0.0%	0.0%
Jewelry									
Stolen	\$0	\$6	\$141,646	\$0	\$0	\$1,723,002	\$0	\$0	\$4,000
Recovered	\$0	\$6	\$14,598	\$0	\$0	\$86,271	\$0	\$0	\$200
% Recovered	0.0%	100.0%	10.3%	0.0%	0.0%	5.0%	0.0%	0.0%	5.0%
Clothing									
Stolen	\$0	\$0	\$52,863	\$0	\$0	\$900,744	\$0	\$0	\$55
Recovered	\$0	\$0	\$2,965	\$0	\$0	\$36,992	\$0	\$0	\$0
% Recovered	0.0%	0.0%	5.6%	0.0%	0.0%	4.1%	0.0%	0.0%	0.0%
Motor Vehicle									
Stolen	\$0	\$0	\$877,814	\$3,200	\$0	\$4,034,256	\$0	\$0	\$27,750
Recovered	\$0	\$0	\$758,128	\$0	\$0	\$1,402,825	\$0	\$0	\$21,100
% Recovered	0.0%	0.0%	86.4%	0.0%	0.0%	34.8%	0.0%	0.0%	76.0%
Office Equipment									
Stolen	\$0	\$0	\$104,506	\$0	\$0	\$502,964	\$0	\$0	\$3,150
Recovered	\$0	\$0	\$7,599	\$0	\$0	\$12,289	\$0	\$0	\$0
% Recovered	0.0%	0.0%	7.3%	0.0%	0.0%	2.4%	0.0%	0.0%	0.0%
TV, VCR, Camera, Etc.									
Stolen	\$0	\$214	\$78,027	\$0	\$1	\$1,276,182	\$200	\$0	\$7,034
Recovered	\$0	\$0	\$1,697	\$0	\$0	\$20,135	\$0	\$0	\$119
% Recovered	0.0%	0.0%	2.2%	0.0%	0.0%	1.6%	0.0%	0.0%	1.7%
Firearm									
Stolen	\$0	\$0	\$13,864	\$520	\$0	\$79,965	\$0	\$125	\$778
Recovered	\$0	\$425	\$1,959	\$0	\$0	\$535	\$0	\$125	\$0
% Recovered	0.0%	0.0%	14.1%	0.0%	0.0%	0.7%	0.0%	100.0%	0.0%
Household Goods									
Stolen	\$0	\$0	\$83,567	\$1,780	\$0	\$167,557	\$0	\$0	\$2,170
Recovered	\$0	\$0	\$1,086	\$0	\$0	\$1,003	\$0	\$0	\$0
% Recovered	0.0%	0.0%	1.3%	0.0%	0.0%	0.6%	0.0%	0.0%	0.0%
Consumable Goods									
Stolen	\$0	\$317	\$5,760	\$50	\$2	\$107,050	\$0	\$0	\$44
Recovered	\$0	\$0	\$173	\$0	\$0	\$6,879	\$0	\$0	\$6
% Recovered	0.0%	0.0%	3.0%	0.0%	0.0%	6.4%	0.0%	0.0%	12.8%
Livestock									
Stolen	\$0	\$0	\$0	\$0	\$0	\$0	\$0	\$0	\$0
Recovered	\$0	\$0	\$0	\$0	\$0	\$0	\$0	\$0	\$0
% Recovered	0.0%	0.0%	0.0%	0.0%	0.0%	0.0%	0.0%	0.0%	0.0%
Misc.									
Stolen	\$69	\$2,226	\$258,040	\$5,825	\$551	\$3,340,159	\$0	\$0	\$52,949
Recovered	\$69	\$342	\$4,938	\$0	\$0	\$94,769	\$0	\$0	\$717
% Recovered	100.0%	15.4%	1.9%	0.0%	0.0%	2.8%	0.0%	0.0%	1.4%
TOTALS									
Stolen	\$69	\$4,399	\$1,672,789	\$12,375	\$554	\$14,010,613	\$200	\$155	\$101,538
Recovered	\$69	\$773	\$793,643	\$0	\$0	\$1,670,892	\$0	\$125	\$22,141
% Recovered	100.0%	17.6%	47.4%	0.0%	0.0%	11.9%	0.0%	80.6%	21.8%

Stolen/Recovered Property Report

DECEMBER 2003

Property Type	Mesquite PD	Mineral SO	NLVPD	Nye SO	Pershing SO	Reno PD	Sparks PD	Storey SO	TMCC PD	UNLV PD
Currency										
Stolen	\$390	\$0	\$45,161	\$2,500	\$0	\$78,773	\$25,323	\$19,000	\$0	\$825
Recovered	\$0	\$0	\$674	\$0	\$0	\$5,952	\$1	\$0	\$0	\$0
% Recovered	0.0%	0.0%	1.5%	0.0%	0.0%	7.6%	0.0%	0.0%	0.0%	0.0%
Jewelry										
Stolen	\$0	\$0	\$218,152	\$3,000	\$0	\$197,442	\$28,864	\$0	\$0	\$1,247
Recovered	\$0	\$0	\$1,665	\$1,500	\$0	\$443	\$189	\$0	\$0	\$0
% Recovered	0.0%	0.0%	0.8%	50.0%	0.0%	0.2%	0.7%	0.0%	0.0%	0.0%
Clothing										
Stolen	\$300	\$0	\$7,328	\$0	\$0	\$46,633	\$7,416	\$0	\$0	\$0
Recovered	\$0	\$0	\$1,027	\$0	\$0	\$5,441	\$485	\$0	\$0	\$0
% Recovered	0.0%	0.0%	14.0%	0.0%	0.0%	11.7%	6.5%	0.0%	0.0%	0.0%
Motor Vehicle										
Stolen	\$0	\$0	\$1,347,746	\$25,300	\$4,000	\$665,000	\$305,100	\$5,000	\$0	\$28,700
Recovered	\$0	\$0	\$880,237	\$15,000	\$4,000	\$606,947	\$189,500	\$0	\$0	\$24,000
% Recovered	0.0%	0.0%	65.3%	59.3%	100.0%	91.3%	62.1%	0.0%	0.0%	83.6%
Office Equipment										
Stolen	\$0	\$2,649	\$2,055	\$3,500	\$0	\$82,883	\$8,315	\$0	\$0	\$0
Recovered	\$0	\$0	\$960	\$1,000	\$0	\$1,636	\$0	\$0	\$0	\$0
% Recovered	0.0%	0.0%	46.7%	28.6%	0.0%	2.0%	0.0%	0.0%	0.0%	0.0%
TV, VCR, Camera, Etc.										
Stolen	\$0	\$0	\$395,750	\$2,500	\$0	\$90,171	\$100,354	\$0	\$1,650	\$1,720
Recovered	\$0	\$0	\$2,990	\$2,000	\$0	\$6,021	\$1,928	\$0	\$0	\$0
% Recovered	0.0%	0.0%	0.8%	80.0%	0.0%	6.7%	1.9%	0.0%	0.0%	0.0%
Firearm										
Stolen	\$800	\$0	\$7,465	\$1,500	\$0	\$14,585	\$5,225	\$0	\$0	\$0
Recovered	\$0	\$0	\$0	\$500	\$0	\$100	\$1,525	\$0	\$0	\$0
% Recovered	0.0%	0.0%	0.0%	33.3%	0.0%	0.7%	29.2%	0.0%	0.0%	0.0%
Household Goods										
Stolen	\$1,026	\$0	\$21,353	\$817	\$0	\$7,450	\$57,634	\$3,500	\$0	\$0
Recovered	\$0	\$0	\$141	\$217	\$0	\$0	\$1,050	\$0	\$0	\$0
% Recovered	0.0%	0.0%	0.7%	26.6%	0.0%	0.0%	1.8%	0.0%	0.0%	0.0%
Consumable Goods										
Stolen	\$2	\$0	\$6,060	\$0	\$231	\$2,268	\$181,679	\$0	\$0	\$0
Recovered	\$2	\$0	\$339	\$0	\$0	\$432	\$225	\$0	\$0	\$0
% Recovered	100.0%	0.0%	5.6%	0.0%	0.0%	19.0%	0.1%	0.0%	0.0%	0.0%
Livestock										
Stolen	\$0	\$0	\$0	\$0	\$0	\$1,200	\$0	\$0	\$0	\$0
Recovered	\$0	\$0	\$0	\$0	\$0	\$0	\$0	\$0	\$0	\$0
% Recovered	0.0%	0.0%	0.0%	0.0%	0.0%	0.0%	0.0%	0.0%	0.0%	0.0%
Misc.										
Stolen	\$8,535	\$0	\$331,444	\$15,230	\$162	\$432,172	\$105,348	\$6	\$0	\$61,411
Recovered	\$100	\$0	\$20,175	\$10,250	\$0	\$20,597	\$2,661	\$0	\$0	\$0
% Recovered	1.2%	0.0%	6.1%	67.3%	0.0%	4.8%	2.5%	0.0%	0.0%	0.0%
TOTALS										
Stolen	\$11,053	\$2,649	\$2,382,514	\$54,347	\$4,393	\$1,618,577	\$825,258	\$27,506	\$1,650	\$93,903
Recovered	\$102	\$0	\$908,208	\$30,467	\$4,000	\$647,569	\$197,564	\$0	\$0	\$24,000
% Recovered	0.9%	0.0%	38.1%	56.1%	91.1%	40.0%	23.9%	0.0%	0.0%	25.6%

Stolen/Recovered Property Report

DECEMBER 2003

Property Type	UNR PD	Washoe SO	Washoe Co Schl PD	Wendover PD	White Pine SO	Winnemucca PD	Yerington PD	Total By Property
Currency								
Stolen	\$87	\$10,225	\$282	\$710	\$0	\$5,090	\$212	\$2,160,483
Recovered	\$0	\$0	\$0	\$0	\$0	\$0	\$0	\$17,895
% Recovered	0.0%	0.0%	0.0%	0.0%	0.0%	0.0%	0.0%	0.8%
Jewelry								
Stolen	\$0	\$65,316	\$0	\$0	\$0	\$0	\$0	\$2,463,505
Recovered	\$0	\$0	\$0	\$0	\$0	\$0	\$0	\$113,134
% Recovered	0.0%	0.0%	0.0%	0.0%	0.0%	0.0%	0.0%	4.6%
Clothing								
Stolen	\$0	\$1,420	\$0	\$408	\$40	\$0	\$45	\$1,023,048
Recovered	\$0	\$0	\$0	\$0	\$0	\$0	\$45	\$47,135
% Recovered	0.0%	0.0%	0.0%	0.0%	0.0%	0.0%	100.0%	4.6%
Motor Vehicle								
Stolen	\$37,675	\$118,218	\$0	\$1,000	\$15,000	\$45,000	\$0	\$7,792,512
Recovered	\$0	\$56,447	\$0	\$1,000	\$15,000	\$18,000	\$0	\$4,265,234
% Recovered	0.0%	47.7%	0.0%	100.0%	100.0%	40.0%	0.0%	54.7%
Office Equipment								
Stolen	\$1,550	\$7,264	\$903	\$0	\$0	\$0	\$0	\$790,624
Recovered	\$1,550	\$0	\$0	\$0	\$0	\$0	\$0	\$25,107
% Recovered	100.0%	0.0%	0.0%	0.0%	0.0%	0.0%	0.0%	3.2%
TV, VCR, Camera, Etc.								
Stolen	\$3,130	\$29,074	\$317	\$600	\$1,330	\$2,565	\$0	\$2,053,988
Recovered	\$0	\$0	\$0	\$0	\$50	\$0	\$0	\$36,123
% Recovered	0.0%	0.0%	0.0%	0.0%	3.8%	0.0%	0.0%	1.8%
Firearm								
Stolen	\$0	\$6,160	\$0	\$0	\$700	\$400	\$0	\$151,801
Recovered	\$0	\$0	\$0	\$0	\$0	\$0	\$0	\$5,169
% Recovered	0.0%	0.0%	0.0%	0.0%	0.0%	0.0%	0.0%	3.4%
Household Goods								
Stolen	\$0	\$4,931	\$0	\$45	\$0	\$250	\$1,434	\$362,793
Recovered	\$0	\$0	\$0	\$0	\$0	\$250	\$0	\$3,781
% Recovered	0.0%	0.0%	0.0%	0.0%	0.0%	100.0%	0.0%	1.0%
Consumable Goods								
Stolen	\$21	\$3,736	\$0	\$1	\$131	\$43	\$0	\$308,809
Recovered	\$0	\$13	\$0	\$1	\$0	\$0	\$0	\$8,520
% Recovered	0.0%	0.3%	0.0%	100.0%	0.0%	0.0%	0.0%	2.8%
Livestock								
Stolen	\$0	\$0	\$0	\$0	\$0	\$0	\$0	\$1,650
Recovered	\$0	\$0	\$0	\$0	\$0	\$0	\$0	\$0
% Recovered	0.0%	0.0%	0.0%	0.0%	0.0%	0.0%	0.0%	0.0%
Misc.								
Stolen	\$11,930	\$165,528	\$1,109	\$2,905	\$68	\$164	\$150	\$5,073,505
Recovered	\$946	\$4,215	\$111	\$0	\$18	\$0	\$0	\$172,985
% Recovered	7.9%	2.5%	10.0%	0.0%	26.4%	0.0%	0.0%	3.4%
TOTALS								
Stolen	\$54,393	\$411,872	\$2,611	\$5,669	\$17,269	\$53,512	\$1,841	\$22,182,718
Recovered	\$2,496	\$60,675	\$111	\$1,001	\$15,068	\$18,250	\$45	\$4,695,083
% Recovered	4.6%	14.7%	4.3%	17.7%	87.3%	34.1%	2.4%	21.2%

Nevada--Assaults on Officers by Agency--UCR

DECEMBER 2003

Agency	DECEMBER 2003 Offenses	DECEMBER 2003 Cleared	2003 YTD Offenses	2003 YTD Cleared	DECEMBER 2002 Offenses	DECEMBER 2002 Cleared	2002 YTD Offenses	2002 YTD Cleared
Boulder	0	0	0	0	0	0	0	0
Carlin PD	0	0	0	0	0	0	3	3
Carson SO	0	0	10	10	0	0	9	8
Churchill SO	0	0	8	8	0	0	7	7
ClrkSchIDst PD	0	0	0	0	0	0	0	0
Douglas SO	1	1	9	9	0	0	5	5
Elko PD	1	1	8	7	0	0	4	4
Elko SO	0	0	0	0	0	0	0	0
Esmeralda SO	0	0	0	0	0	0	0	0
Eureka SO	0	0	0	0	0	0	0	0
Fallon PD	0	0	0	0	0	0	0	0
Henderson PD	0	0	11	11	2	2	29	29
Highway Patrol	2	1	27	24	0	0	19	19
Humboldt SO	0	0	3	3	0	0	3	3
Lander SO	0	0	0	0	0	0	0	0
Lincoln SO	0	0	0	0	0	0	0	0
Lovelock PD	0	0	0	0	0	0	0	0
LV Fire Dept	0	0	0	0	0	0	0	0
LV Metro	16	16	310	309	21	21	298	298
Lyon SO	1	1	8	8	0	0	7	7
Mesquite PD	0	0	0	0	0	0	0	0
Mineral SO	0	0	0	0	0	0	3	3
NV Div Investigations	0	0	0	0	0	0	0	0
NLVPD	4	4	65	61	9	9	78	78
Nye SO	2	2	12	12	0	0	14	14
Pershing SO	0	0	0	0	0	0	0	0
Reno PD	3	3	17	16	0	0	5	5
Sparks PD	3	2	13	12	0	0	4	4
Storey SO	0	0	0	0	0	0	0	0
TMCC PD	0	0	0	0	0	0	0	0
UNLV PD	0	0	7	7	0	0	4	4
UNR PD	0	0	0	0	0	0	0	0
Washoe SO	0	0	2	2	1	1	15	13
Washoe Co SchI PD	0	0	0	0	0	0	3	3
Wendover PD	0	0	3	3	0	0	1	1
White Pine SO	0	0	1	1	0	0	1	1
Winnemucca PD	1	1	2	2	0	0	3	3
Yerington PD	0	0	0	0	0	0	0	0
TOTALS	34	32	516	505	33	33	515	512

Nevada -- Assaults by Agency/Weapon/Assignment -- UCR

DECEMBER 2003

Table 16

Agency	Total Assaults	Number Cleared	Firearm	Knife / Cutting Device	Other Danger. Weapon	Hands, Fists, Feet, Etc.	2-Officer Vehicle	1-Officer Vehicle- Alone	1-Officer Vehicle- Assisted	Det./Spec. Assign. - Alone	Det./Spec. Assign. - Assisted	Other- Alone	Other- Assisted
Boulder City PD	0	0	0	0	0	0	0	0	0	0	0	0	0
Carlin PD	0	0	0	0	0	0	0	0	0	0	0	0	0
Carson City SO	0	0	0	0	0	0	0	0	0	0	0	0	0
Churchill Co SO	0	0	0	0	0	0	0	0	0	0	0	0	0
Clark School Dist PD	0	0	0	0	0	0	0	0	0	0	0	0	0
Douglas Co SO	1	1	0	0	0	1	0	1	0	0	0	0	0
Elko PD	1	1	0	0	0	1	0	0	1	0	0	0	0
Elko Co SO	0	0	0	0	0	0	0	0	0	0	0	0	0
Esmeralda Co SO	0	0	0	0	0	0	0	0	0	0	0	0	0
Eureka Co SO	0	0	0	0	0	0	0	0	0	0	0	0	0
Fallon PD	0	0	0	0	0	0	0	0	0	0	0	0	0
Henderson PD	0	0	0	0	0	0	0	0	0	0	0	0	0
NV Highway Patrol	2	1	0	0	0	2	0	0	1	1	0	0	0
Humboldt Co SO	0	0	0	0	0	0	0	0	0	0	0	0	0
Lander Co SO	0	0	0	0	0	0	0	0	0	0	0	0	0
Lincoln Co SO	0	0	0	0	0	0	0	0	0	0	0	0	0
Lovelock PD	0	0	0	0	0	0	0	0	0	0	0	0	0
Las Vegas Fire Dept	0	0	0	0	0	0	0	0	0	0	0	0	0
Las Vegas Metro PD	16	16	0	2	0	14	7	3	4	0	0	0	2
Lyon Co SO	1	1	0	0	0	1	0	1	0	0	0	0	0
Mesquite PD	0	0	0	0	0	0	0	0	0	0	0	0	0
Mineral Co SO	0	0	0	0	0	0	0	0	0	0	0	0	0
NV Div of Investigations	0	0	0	0	0	0	0	0	0	0	0	0	0
North Las Vegas PD	4	4	0	0	0	4	0	1	3	0	0	0	0
Nye Co SO	2	2	0	0	0	2	0	0	2	0	0	0	0
Pershing Co SO	0	0	0	0	0	0	0	0	0	0	0	0	0
Reno PD	3	3	0	0	0	3	1	0	2	0	0	0	0
Sparks PD	3	2	0	0	0	3	0	1	2	0	0	0	0
Storey Co SO	0	0	0	0	0	0	0	0	0	0	0	0	0
TMCC PD	0	0	0	0	0	0	0	0	0	0	0	0	0
UNLV PD	0	0	0	0	0	0	0	0	0	0	0	0	0
UNR PD	0	0	0	0	0	0	0	0	0	0	0	0	0
Washoe Co SO	0	0	0	0	0	0	0	0	0	0	0	0	0
Washoe Co School PD	0	0	0	0	0	0	0	0	0	0	0	0	0
West Wendover PD	0	0	0	0	0	0	0	0	0	0	0	0	0
White Pine Co SO	0	0	0	0	0	0	0	0	0	0	0	0	0
Winnemucca PD	1	1	0	0	0	1	0	0	0	0	0	0	1
Yerington PD	0	0	0	0	0	0	0	0	0	0	0	0	0
TOTALS	34	32	0	2	0	32	8	7	15	1	0	0	3

28

Nevada -- Officer Assaults by Activity/Weapon/Assignment -- UCR

DECEMBER 2003

Table 17

29

ACTIVITY TYPE	Total Assaults	Number Cleared	Firearm	Knife / Cutting Device	Other Danger. Weapon	Hands, Fists, Feet, Etc.	2-Officer Vehicle	1-Officer Vehicle- Alone	1-Officer Vehicle- Assisted	Det./Spec. Assign.- Alone	Det./Spec. Assign.- Assisted	Other- Alone	Other- Assisted
DOMESTIC / OTHER DISTURBANCE	13	13	0	0	0	13	2	3	7	1	0	0	0
BURGLARY IN PROGRESS	0	0	0	0	0	0	0	0	0	0	0	0	0
ROBBERY IN PROGRESS	0	0	0	0	0	0	0	0	0	0	0	0	0
ATTEMPTING OTHER ARREST	3	3	0	0	0	3	0	0	3	0	0	0	0
CIVIL DISORDER	0	0	0	0	0	0	0	0	0	0	0	0	0
HANDLING PRISONER	5	5	0	0	0	5	2	0	0	0	0	0	3
INVEST. SUSP. PERSONS / CIRCUM.	3	3	0	2	0	1	2	1	0	0	0	0	0
AMBUSH-NO WARNING	0	0	0	0	0	0	0	0	0	0	0	0	0
MENTALLY DERANGED	0	0	0	0	0	0	0	0	0	0	0	0	0
TRAFFIC PURSUITS / STOPS	5	4	0	0	0	5	0	1	4	0	0	0	0
ALL OTHER	5	4	0	0	0	5	2	2	1	0	0	0	0
TOTALS	34	32	0	2	0	32	8	7	15	1	0	0	3

Nevada--Assaults with Injury/without Injury--UCR

DECEMBER 2003

Agency	Total Assaults by weapon		Firearm		Cutting Instruments		Other Dangerous weapons		Hands, Fists, Feet, Etc.	
	With personal injury	Without personal injury	With personal injury	Without personal injury	With personal injury	Without personal injury	With personal injury	Without personal injury	With personal injury	Without personal injury
Boulder City PD	0	0	0	0	0	0	0	0	0	0
Carlin PD	0	0	0	0	0	0	0	0	0	0
Carson City SO	0	0	0	0	0	0	0	0	0	0
Churchill Co SO	0	0	0	0	0	0	0	0	0	0
Clark Co Schl Dist PD	0	0	0	0	0	0	0	0	0	0
Douglas Co SO	1	1	0	0	0	0	0	0	1	0
Elko Co SO	0	0	0	0	0	0	0	0	0	0
Elko PD	1	0	1	0	0	0	0	0	0	1
Esmeralda Co SO	0	0	0	0	0	0	0	0	0	0
Eureka Co SO	0	0	0	0	0	0	0	0	0	0
Fallon PD	0	0	0	0	0	0	0	0	0	0
Henderson PD	0	0	0	0	0	0	0	0	0	0
NV Highway Patrol	2	0	2	0	0	0	0	0	0	2
Humboldt Co SO	0	0	0	0	0	0	0	0	0	0
Lander Co SO	0	0	0	0	0	0	0	0	0	0
Las Vegas Metro PD	16	3	13	0	0	0	0	0	3	13
Lincoln Co SO	0	0	0	0	0	0	0	0	0	0
Lovelock PD	0	0	0	0	0	0	0	0	0	0
Lyon Co SO	1	0	1	0	0	0	0	0	0	1
Mesquite PD	0	0	0	0	0	0	0	0	0	0
Mineral Co SO	0	0	0	0	0	0	0	0	0	0
NV Div Investigations	0	0	0	0	0	0	0	0	0	0
North Las Vegas PD	4	0	4	0	0	0	0	0	0	4
Nye Co SO	2	2	0	0	0	0	0	0	2	0
Pershing Co SO	0	0	0	0	0	0	0	0	0	0
Reno PD	3	1	2	0	0	0	0	0	1	2
Sparks PD	3	0	3	0	0	0	0	0	0	3
Storey Co SO	0	0	0	0	0	0	0	0	0	0
TMCC PD	0	0	0	0	0	0	0	0	0	0
UNLV PD	0	0	0	0	0	0	0	0	0	0
UNR PD	0	0	0	0	0	0	0	0	0	0
Washoe Co SO	0	0	0	0	0	0	0	0	0	0
Washoe Co School Dist.	0	0	0	0	0	0	0	0	0	0
West Wendover PD	0	0	0	0	0	0	0	0	0	0
White Pine Co SO	0	0	0	0	0	0	0	0	0	0
Winnemucca PD	1	1	0	0	0	0	0	0	1	0
Yerington PD	0	0	0	0	0	0	0	0	0	0
Totals	34	8	26	0	0	0	0	0	8	26

Nevada--Time of Assaults on Officers--UCR

DECEMBER 2003

Agency	2:00 AM	4:00 AM	6:00 AM	8:00 AM	10:00 AM	12:00 AM	12:01- 2:00 PM	2:00- 4:00 PM	4:00- 6:00 PM	6:00- 8:00 PM	10:00 PM	10:00- 12:00 PM
Boulder City PD	0	0	0	0	0	0	0	0	0	0	0	0
Carlin PD	0	0	0	0	0	0	0	0	0	0	0	0
Carson City SO	0	0	0	0	0	0	0	0	0	0	0	0
Churchill Co SO	0	0	0	0	0	0	0	0	0	0	0	0
Clark Co Schl Dist PD	0	0	0	0	0	0	0	0	0	0	0	0
Douglas Co SO	0	0	0	0	0	0	0	0	0	1	0	0
Elko Co SO	0	0	0	0	0	0	0	0	0	0	0	0
Elko PD	0	0	0	0	0	0	0	0	0	0	1	0
Esmeralda Co SO	0	0	0	0	0	0	0	0	0	0	0	0
Eureka Co SO	0	0	0	0	0	0	0	0	0	0	0	0
Fallon PD	0	0	0	0	0	0	0	0	0	0	0	0
Henderson PD	0	0	0	0	0	0	0	0	0	0	0	0
Highway Patrol	0	0	0	0	0	0	0	0	0	0	2	0
Humbolt Co SO	0	0	0	0	0	0	0	0	0	0	0	0
Lander Co SO	0	0	0	0	0	0	0	0	0	0	0	0
Las Vegas Metro PD	7	0	2	0	0	0	0	0	0	1	3	3
Lincoln Co SO	0	0	0	0	0	0	0	0	0	0	0	0
Lovelock PD	0	0	0	0	0	0	0	0	0	0	0	0
Lyon Co SO	0	0	0	0	0	1	0	0	0	0	0	0
Mesquite PD	0	0	0	0	0	0	0	0	0	0	0	0
Mineral Co SO	0	0	0	0	0	0	0	0	0	0	0	0
NV Div Investigations	0	0	0	0	0	0	0	0	0	0	0	0
North LV PD	0	1	0	0	0	0	1	0	0	0	1	1
Nye Co SO	1	0	0	0	0	0	0	0	0	0	0	1
Pershing Co SO	0	0	0	0	0	0	0	0	0	0	0	0
Reno PD	2	0	0	0	0	0	1	0	0	0	0	0
Sparks PD	0	0	0	0	0	0	0	0	0	2	0	1
Storey Co SO	0	0	0	0	0	0	0	0	0	0	0	0
TMCC PD	0	0	0	0	0	0	0	0	0	0	0	0
UNLV PD	0	0	0	0	0	0	0	0	0	0	0	0
UNR PD	0	0	0	0	0	0	0	0	0	0	0	0
Washoe Co SO	0	0	0	0	0	0	0	0	0	0	0	0
Washoe Co Schl PD	0	0	0	0	0	0	0	0	0	0	0	0
West Wendover PD	0	0	0	0	0	0	0	0	0	0	0	0
White Pine Co SO	0	0	0	0	0	0	0	0	0	0	0	0
Winnemucca PD	0	0	0	0	0	0	0	0	0	0	1	0
Yerington PD	0	0	0	0	0	0	0	0	0	0	0	0
Totals	10	1	2	0	0	1	2	0	0	4	8	6

Nevada -- Division Of Investigations

Arrests for Narcotics Violations

December 2003

		10- 13-		23- 25- 30- 35- 40- 45- 50- 55- 60-																	Total	W	B	A	I					
		<10	12	14	15	16	17	18	19	20	21	22	24	29	34	39	44	49	54	59	64	>64								
SALES/MANUFACTURING VIOLATIONS																														
Opium or cocaine and their derivatives (morphine, heroin, codeine)	M																						0							
	F																						0							
Marijuana	M								1						1						2	2								
	F																						0							
Synthetic narcotics- Manufactured narcotics that can cause true drug addiction (demerol, meth)	M																						0							
	F																						0							
Other dangerous, non-narcotic, drugs (barbituates, benzderine)	M										1	1	2	1				1	1	1						8	8			
	F											1					1			2						4	4			
Sub-Total	M	0	0	0	0	0	0	1	0	1	1	3	1	0	0	1	1	1	0	0	0	0	10	10	0	0	0			
	F	0	0	0	0	0	0	0	0	0	1	0	0	1	0	2	0	0	0	0	0	0	4	4	0	0	0			
POSSESSION VIOLATIONS																														
Opium or cocaine and their derivatives (morphine, heroin, codeine)	M																						0							
	F																						0							
Marijuana	M					1	4	1				1				2			1						10	10				
	F									1	1					1			1						3	3				
Synthetic narcotics- Manufactured narcotics that can cause true drug addiction (demerol, meth)	M																						0							
	F																						0							
Other dangerous, non-narcotic, drugs (barbituates, benzderine)	M								1						2				1						4	4				
	F												1	2	1						4	4								
Sub-Total	M	0	0	0	0	1	4	2	0	1	0	0	2	2	0	0	1	1	0	0	0	0	14	14	0	0	0			
	F	0	0	0	0	0	0	0	1	0	1	0	1	2	2	0	0	0	0	0	0	0	7	7	0	0	0			
Total		0	0	0	0	1	4	3	1	2	3	3	4	5	2	3	2	2	0	0	0	0	35	35	0	0	0			

Nevada UCR
*Footnotes / Exceptions

DECEMBER 2003

Table 1

--Nevada figures are annualized projections.

--"Assault" does not include simple assaults to allow direct comparison between the Nevada rate and the National rate for this Index offense. See Table 8 for a count of all assaults.

Table 2

--The LV Fire Department reports "Arson" offenses for the City of Las Vegas. The population figure for this agency represents jurisdiction and is not added to the county total. Similarly, the School District Police Departments in Clark and Washoe Counties are not added to county population estimates as they represent persons served (student enrollment plus staff.)

--Assault data in this table includes ALL assaults (aggravated and simple) reported for the current month.

--County crime rates are calculated following subtraction of populations of jurisdictions failing to report.

Table 3

-- In the "Nevada vs National Index Crime and Clearance Rates" sections, the "Assaults" numbers do not include simple assaults following FBI guidelines. Therefore, they may be compared directly to National rates.

-- National crime rate figures are the latest available for comparative use (2000). Nevada figures are annualized projections.

Table 13

--At various times, property values recovered will exceed values stolen for the current reporting period.

General Notes:

■ The following agency(ies) was unable to submit reports for this month:

-- Any late reports not submitted in time for this publication will be incorporated in to the year-to-date totals in subsequent reports.