

Disclaimer: The following information is preliminary and cannot be certified until it is published in the annual report, Crime and Justice in Nevada, which will be available after July 1, 2004.

UNIFORM CRIME REPORTING PROGRAM
UCR STATISTICAL DATA VERIFICATION FORM

As an agency administrator or designee for the _____, I have
(Name of Agency)
reviewed the UCR monthly statistics for **August 2003** which includes all UCR data submitted
year to date. Based upon my or my designee's review and validation of same, I find that:

All data contained in the report for my agency is accurate and complete and may be
released and made part of UCR publications for future distribution to the public and other
interested UCR data subscribers.

Data contained in the report is inaccurate or incomplete and may not be published or
released at this time. (If this choice is selected, please provide the reason in the space
provided below.)

Reason: _____

The corrected data will be supplied to the UCR Program by: _____.
(Date)

This document must be signed and mailed to the Uniform Crime Reporting Program, 808 W.
Nye Lane, Carson City, Nevada 89703 or faxed to (775) 687-1843 by **June 11, 2004**.

Signature of Agency Administrator (or designee)

Name/Title of Agency Administrator (print or type)

Agency's Name/Location

Date

Department of Public Safety
Nevada Highway Patrol
Records and Identification Bureau

Monthly Report



AUGUST

2003

**George Togliatti, Director
Department of Public Safety**

**Colonel David Hosmer, Chief
Nevada Highway Patrol**

**Daryl Riersgard, Manager
Records and Identification Bureau**

**Phyllis Yancey, Administrative Assistant II
Tenna Herman, Management Analyst I**

**Prepared by:
Records and Identification Bureau
Uniform Crime Reporting
808 W. Nye Lane
Carson City, Nevada 89703
(775) 687-1600**

Nevada UCR Definitions / Explanations

Uniform Crime Reporting Program

The UCR program is a nationwide, cooperative, statistical effort by over 17,000 city, county and state law enforcement agencies that voluntarily report data on crimes brought to their attention. Law enforcement agencies active in the national program represent 95% of the total population of the United States. While the program's primary objective is to generate a reliable set of crime statistics for use in law enforcement administration, operation and management, its data has over the years become one of the country's leading social indicators.

In Nevada, 36 agencies are currently reporting UCR data to the statewide program representing nearly 99% of its population. Rather than submitting directly to the FBI, local agencies must submit crime data to the state UCR Repository, which compiles, analyzes and submits copies of the reports to the FBI. The Nevada UCR Program prides itself on its responsiveness to local contributing agencies that previously received limited feedback for their efforts. The Nevada program is also responsible for producing and distributing periodic reports of the information contained in its database. As its database has grown, the program's utility has become even more apparent.

Eight offenses serve as an index for gauging fluctuations in overall volumes and rates of crime. Known collectively as the " Crime Index, " these offenses include *the violent crimes of murder, rape, robbery and assault and the property crimes of burglary, larceny, motor vehicle theft and arson*. These offenses were selected as a grouped measuring device because they represent the most common crime problems. They are all serious crimes; either by their very nature or due to the volume and frequency with which they occur.

Index Crimes Definitions

Murder and Non-negligent Manslaughter

Murder and non negligent manslaughter, as defined in the Uniform Crime Reporting Program, is the willful (non-negligent) killing of a human being by another.

The classification of this offense, as for all other Crime Index offenses, is based solely on police investigation as opposed to the determination of a court, medical examiner, coroner, jury or other judicial entity. Not included in the count for this offense classification are deaths caused by negligence, suicide or accident, justifiable homicides and attempts to murder or assaults to murder. These are scored as aggravated assaults.

Nevada UCR Definitions / Explanations

Forcible Rape

Forcible rape, as defined in the program, is the carnal knowledge of a female forcibly and against her will. Assaults or attempts to commit rape by force or threat of force are also included; however, statutory rape (without force) and other sex offenses are excluded.

Robbery

Robbery is the taking or attempting to take anything of value from the care, custody or control of a person or persons by force or threat of force or violence and/or by putting the victim in fear.

Aggravated Assault

Aggravated assault is an unlawful attack by one person upon another for the purpose of inflicting severe or aggravated bodily injury. This type of assault is usually accompanied by the use of a weapon or by means likely to produce death or great bodily harm. Attempts are included since it is not necessary that an injury result when a gun, knife or other weapon is used which could and probably would result in serious personal injury if the crime were successfully completed

Burglary

The Uniform Crime Reporting Program defines burglary as the unlawful entry of a structure to commit a felony or theft. The use of force to gain entry is not required to classify an offense as burglary. Burglary in this program is categorized into three sub classifications: forcible entry, unlawful entry where no force is used and attempted forcible entry.

Larceny-Theft

Larceny-theft is the unlawful taking, carrying, leading, or riding away of property from the possession or constructive possession of another. It includes crimes such as shoplifting, pocket picking, purse-snatching, thefts from motor vehicles, thefts of motor vehicle parts and accessories, and bicycle thefts, etc., in which no use of force, violence, or fraud occurs. In the UCR Program, this crime category does not include embezzlement, "con" games, forgery, and worthless checks. Motor vehicle theft is also excluded from this category inasmuch as it is a separate Crime Index offense.

Motor Vehicle Theft

Defined as the theft or attempted theft of a motor vehicle, this offense category includes the stealing of automobiles, trucks, buses, motorcycles, motor scooters, snowmobiles, etc. The definition excludes the taking of a motor vehicle for temporary use by those persons having lawful access.

Nevada UCR

Definitions / Explanations

Arson

Arson is defined by the Uniform Crime Reporting Program as any willful or malicious burning or attempt to burn, with or without intent to defraud, a dwelling house, public building, a motor vehicle or aircraft, personal property of another, etc. Only fires determined through investigation to have been willfully or maliciously set are classified as arsons. Fires of suspicious or unknown origins are excluded.

Population Estimates

State, county and incorporated city population estimates are prepared and reviewed prior to the end of each calendar year for certification by the governor by March 1. The Nevada Department of Taxation and Nevada State Demographer, Bureau of Business and Economic Research, College of Business Administration, University of Nevada, Reno, prepares these estimates.

Crime Rates

Crime rates involve the number of Index Crimes per unit of population, usually per 100,000 persons. Because Nevada has such a low population, a rate per 1,000 persons is used to reflect a more realistic volume. No attempt is made to incorporate transient populations or other factors that contribute to the ratio and types of crime in given areas. Any effort to make comparisons of crime rates between areas should be tempered by these population and environmental variables.

Crime rates are one of the most meaningful statistical elements. Computation of crime rates per 1,000 population is achieved by dividing the community's population by 1,000, then dividing the number of offenses in each class by that number. The answer is the number of offenses per 1,000 population and is the crime rate for that particular offense. In Table 2, the County Total Crime Rate is computed after subtracting the population figure for all non-reporting agencies for the current month.

The index offense "Aggravated Assault" is an item of special interest to users of Nevada's UCR report. In Tables 1 & 3, where Nevada and National crime rates are compared, "simple assaults" are subtracted from the total of all assaults following FBI UCR rules, thus allowing for direct comparison. However, total assaults (simple and aggravated) are also presented in the Nevada report. This is because the Nevada UCR staff believes this figure is an important indicator of risk for citizens and it presents a more balanced picture of this portion of the crime index to law enforcement personnel.

The Federal Bureau of Investigation, Uniform Crime Reporting Section, publishes national rates.

Clearance Rates

The percentage of crimes cleared is obtained by dividing the number of offenses cleared by the number of offenses known. This number is then multiplied by 100.

Nevada--Statewide Summary--UCR Index Crimes

AUGUST 2003

Offense	Crimes this Month	# Cleared this Month	% Cleared this Month	Crimes this YTD	# Cleared this YTD	% Cleared this YTD	AUGUST Crimes 2002	AUGUST Cleared 2002	% AUGUST Cleared 2002	2003 NV Rate / 1,000 (Proj) *	2002 NV Rate / 1,000	2001 Natl. Rate / 1,000
Murder	18	8	44	120	56	47	14	8	57	0.08	0.09	0.56
Rape	70	18	26	602	176	29	63	25	40	0.41	0.44	0.32
Robbery	396	68	17	3,397	694	20	437	97	22	2.31	2.40	1.48
Assault *	603	219	36	5,100	1,986	39	543	304	56	3.47	3.58	3.19
Burglary	1,689	352	21	14,481	3,224	22	1,721	379	22	9.85	8.89	7.41
Larceny	4,160	554	13	34,229	6,046	18	4,265	1,265	30	23.27	22.26	24.85
MV Theft	1,643	196	12	13,249	1,632	12	1,452	221	15	9.01	8.20	4.31
Arson	48	9	19	389	56	14	55	10	18	0.26	0.30	0.35
Total	8,627	1,424	17	71,567	13,870	19	8,550	2,309	27	48.66	46.14	42.47

* The projected Crime Rate for Assaults is computed after subtracting Simple Assaults from the total for all Assaults following FBI guidelines. Therefore, this rate may be compared directly to the National Rate. See Table 3 and the "Footnotes/Exceptions page for further information.

Nevada UCR - - Monthly Crime/ Clearance Summary - - All Crimes

Contributing Agency	Est. Pop	Murder		Rape		Robbery		Assault		Burglary		Larceny		MV Theft		Arson		Total Crimes	Crime Rate	Clearances	Clearance Rate
Carson County																		AUGUST 2003			
Carson SO	54,844	0	0	0	0	2	1	70	36	42	3	94	6	14	2	1	0	223	4.07	48	21.5%
County Total	54,844	0	0	0	0	2	1	70	36	42	3	94	6	14	2	1	0	223	4.07	48	21.5%
Churchill County																					
Churchill SO	16,939	0	0	2	0	0	0	20	17	7	3	21	5	4	5	0	0	54	3.19	30	55.6%
Fallon PD	8,178	0	0	0	0	1	0	20	11	4	0	33	5	1	0	0	0	59	7.21	16	27.1%
County Total	25,117	0	0	2	0	1	0	40	28	11	3	54	10	5	5	0	0	113	4.50	46	40.7%
Clark County																					
Boulder PD	14,842	1	0	0	0	0	0	3	2	5	1	7	0	1	1	0	0	17	1.15	4	23.5%
Clark Co. Schools PD*	284,512	0	0	0	0	1	0	8	2	25	2	32	1	4	0	5	0	75	0.26	5	6.7%
Henderson	209,486	0	0	0	0	0	0	0	0	0	0	0	0	0	0	0	0	0	0.00	0	0.0%
LV Metro PD	1,176,146	14	5	46	11	297	45	2,132	462	1,095	273	2,464	192	1,255	149	24	3	7,327	6.23	1,140	15.6%
LV Fire Dept*																8	3	8	N/A	3	37.5%
Mesquite	13,216	0	0	0	0	0	0	16	16	0	0	16	3	1	1	0	0	33	2.50	20	60.6%
North Las Vegas PD	135,967	0	0	4	1	27	2	215	128	113	11	207	47	148	5	2	0	716	5.27	194	27.1%
UNLV PD*	26,345	0	0	0	0	0	0	0	0	13	1	24	0	5	1	0	0	42	1.59	2	4.8%
County Total	1,549,657	15	5	50	12	325	47	2,374	610	1,251	288	2,750	243	1,414	157	39	6	8,218	5.30	1,368	16.6%
Douglas County																					
Douglas SO	44,212	0	0	0	0	1	1	65	46	17	2	67	13	4	4	1	0	155	3.51	66	42.6%
County Total	44,212	0	0	0	0	1	1	65	46	17	2	67	13	4	4	1	0	155	3.51	66	42.6%

*Population figure not included in county total
Table 2

Nevada UCR - - Monthly Crime/ Clearance Summary - - All Crimes

Contributing Agency	Est. Pop	Murder		Rape		Robbery		Assault		Burglary		Larceny		MV Theft		Arson		Total Crimes	Crime Rate	Clearances	Clearance Rate
Elko County																		AUGUST 2003			
Elko SO	23,153	0	0	1	1	0	0	3	1	4	0	14	1	1	1	1	1	24	1.04	5	20.8%
Carlin PD	2,074	0	0	0	0	0	0	2	1	2	0	3	1	0	0	0	0	7	3.38	2	28.6%
Elko PD	16,690	0	0	1	0	0	0	32	9	18	0	42	4	5	0	0	0	98	5.87	13	13.3%
WestWendover PD	4,661	0	0	0	0	1	0	5	4	0	0	16	5	1	1	0	0	23	4.93	10	43.5%
County Total	46,578	0	0	2	1	1	0	42	15	24	0	75	11	7	2	1	1	152	3.26	30	19.7%
Esmeralda County																					
Esmeralda SO	1,125	0	0	0	0	0	0	0	0	3	0	0	0	0	0	0	0	3	2.67	0	0.0%
County Total	1,125	0	0	0	0	0	0	0	0	3	0	0	0	0	0	0	0	3	2.67	0	0.0%
Eureka County																					
Eureka SO	1,384	0	0	0	0	0	0	0	0	0	0	0	0	1	0	0	0	1	0.72	0	0.0%
County Total	1,384	0	0	0	0	0	0	0	0	0	0	0	0	1	0	0	0	1	0.72	0	0.0%
Humboldt County																					
Humboldt SO	9,074	0	0	0	0	0	0	9	6	2	0	2	1	2	2	0	0	15	1.65	9	60.0%
Winnemucca PD	7,234	0	0	0	0	0	0	9	8	6	1	21	8	0	0	0	0	36	4.98	17	47.2%
County Total	16,308	0	0	0	0	0	0	18	14	8	1	23	9	2	2	0	0	51	3.13	26	51.0%

*Population figure not included in county total
Table 2

Nevada UCR - - Monthly Crime/ Clearance Summary - - All Crimes

Contributing Agency	Est. Pop	Murder		Rape		Robbery		Assault		Burglary		Larceny		MV Theft		Arson		Total Crimes	Crime Rate	Clearances	Clearance Rate
Lander County																		AUGUST 2003			
Lander SO	5,547	0	0	0	0	0	0	6	1	1	0	4	2	1	0	0	0	12	2.16	3	25.0%
County Total	5,547	0	0	0	0	0	0	6	1	1	0	4	2	1	0	0	0	12	2.16	3	25.0%
Lincoln County																					
Lincoln SO	3,879	0	0	0	0	0	0	1	1	1	0	3	2	1	0	0	0	6	1.55	3	50.0%
County Total	3,879	0	0	0	0	0	0	1	1	1	0	3	2	1	0	0	0	6	1.55	3	50.0%
Lyon County																					
Lyon SO	35,917	0	0	1	0	0	0	51	51	19	5	46	11	8	3	1	1	126	3.51	71	56.3%
Yerington PD	2,859	0	0	0	0	0	0	7	5	3	0	2	1	0	0	0	0	12	4.20	6	50.0%
County Total	38,776	0	0	1	0	0	0	58	56	22	5	48	12	8	3	1	1	138	3.56	77	55.8%
Mineral County																					
Mineral SO	4,695	0	0	0	0	0	0	0	0	9	0	2	1	0	0	0	0	11	2.34	1	9.1%
County Total	4,695	0	0	0	0	0	0	0	0	9	0	2	1	0	0	0	0	11	2.34	1	9.1%
Nye County																					
Nye SO	35,039	0	0	0	0	1	1	73	73	29	14	52	35	5	5	2	0	162	4.62	128	79.0%
County Total	35,039	0	0	0	0	1	1	73	73	29	14	52	35	5	5	2	0	162	4.62	128	79.0%

*Population figure not included in county total
Table 2

Nevada UCR - - Monthly Crime/ Clearance Summary - - All Crimes

Contributing Agency	Est. Pop	Murder		Rape		Robbery		Assault		Burglary		Larceny		MV Theft		Arson		Total Crimes	Crime Rate	Clearances	Clearance Rate
Pershing County																		AUGUST 2003			
Pershing SO	4,670	0	0	0	0	0	0	5	3	2	0	9	2	0	0	0	0	16	3.43	5	31.3%
Lovelock PD	2,267	0	0	0	0	0	0	6	6	4	2	1	0	0	0	0	0	11	4.85	8	72.7%
County Total	6,937	0	0	0	0	0	0	11	9	6	2	10	2	0	0	0	0	27	3.89	13	48.1%
Storey County																					
Storey	3,639	0	0	0	0	0	0	3	2	1	0	3	0	0	0	0	0	7	1.92	2	28.6%
County Total	3,639	0	0	0	0	0	0	3	2	1	0	3	0	0	0	0	0	7	1.92	2	28.6%
Washoe County																					
Washoe SO	96,334	1	1	2	1	1	0	74	40	47	4	61	6	13	0	0	0	199	2.07	52	26.1%
Reno PD	187,834	1	1	10	1	51	15	445	188	135	12	679	142	135	10	3	1	1,459	7.77	370	25.4%
Sparks PD	75,255	1	1	3	3	12	2	167	137	78	18	198	54	31	6	0	0	490	6.51	221	45.1%
UNR PD*	15,000	0	0	0	0	0	0	3	1	2	0	15	1	1	0	0	0	21	1.40	2	9.5%
Washoe Co SchI PD*	66,515	0	0	0	0	1	1	0	0	1	0	9	0	0	0	0	0	11	0.17	1	9.1%
TMCC PD*	11,878	0	0	0	0	0	0	0	0	0	0	1	0	0	0	0	0	1	0.08	0	0.0%
County Total	359,423	3	3	15	5	65	18	689	366	263	34	963	203	180	16	3	1	2,181	6.07	646	29.6%
White Pine County																					
White Pine SO	8,863	0	0	0	0	0	0	8	7	1	0	12	5	1	0	0	0	22	2.48	12	54.5%
County Total	8,863	0	0	0	0	0	0	8	7	1	0	12	5	1	0	0	0	22	2.48	12	54.5%
Grand Total	2,206,023	18	8	70	18	396	68	3,458	1,264	1,689	352	4,160	554	1,643	196	48	9	11,482	5.20	2,469	21.5%

*Population figure not included in county total
Table 2

Nevada UCR - - Monthly Crimes/Clearances Summary - - Index Crimes

AUGUST 2003

Est. Pop	Murder		Rape		Robbery		Assault		Burglary		Larceny		MV Theft		Arson		Total Crimes	Crime Rate	Total Clear	Clearance Rate	
Statewide Totals																					
(Crimes/Clearances)	2,206,023	18	8	70	18	396	68	603	219	1689	352	4160	554	1643	196	48	9	8627	3.91	1424	16.51

Nevada (Projected 2003) vs National (2001) Index Crime Rates

(per 1,000 population)

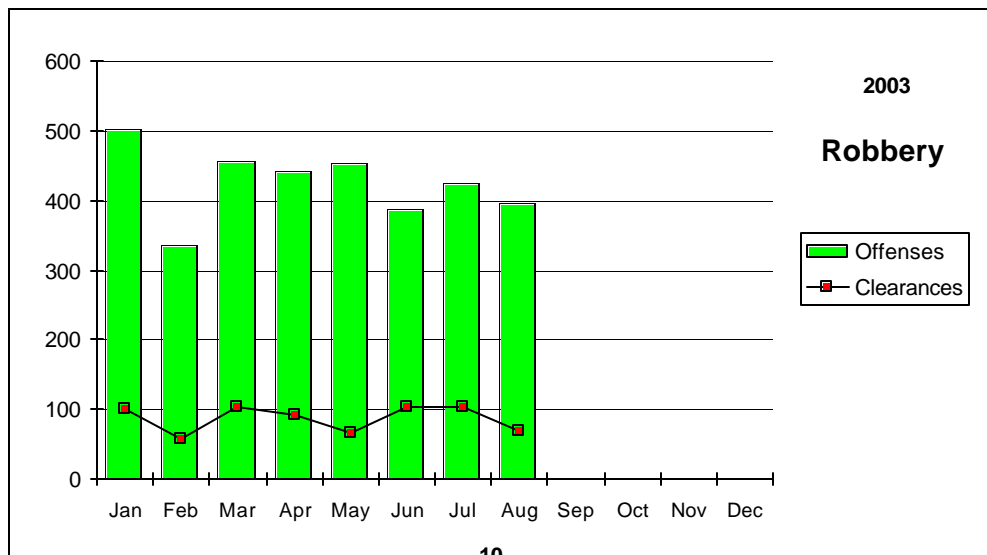
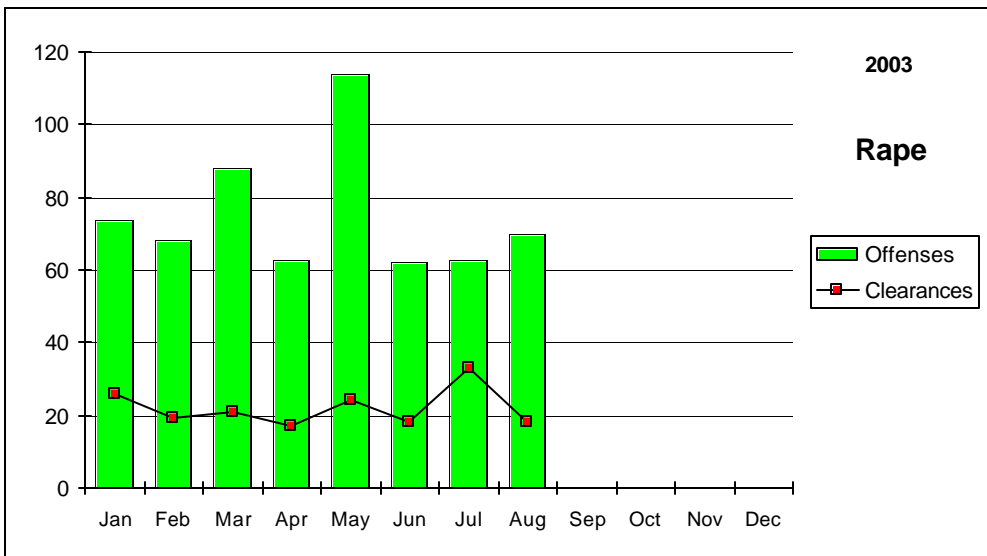
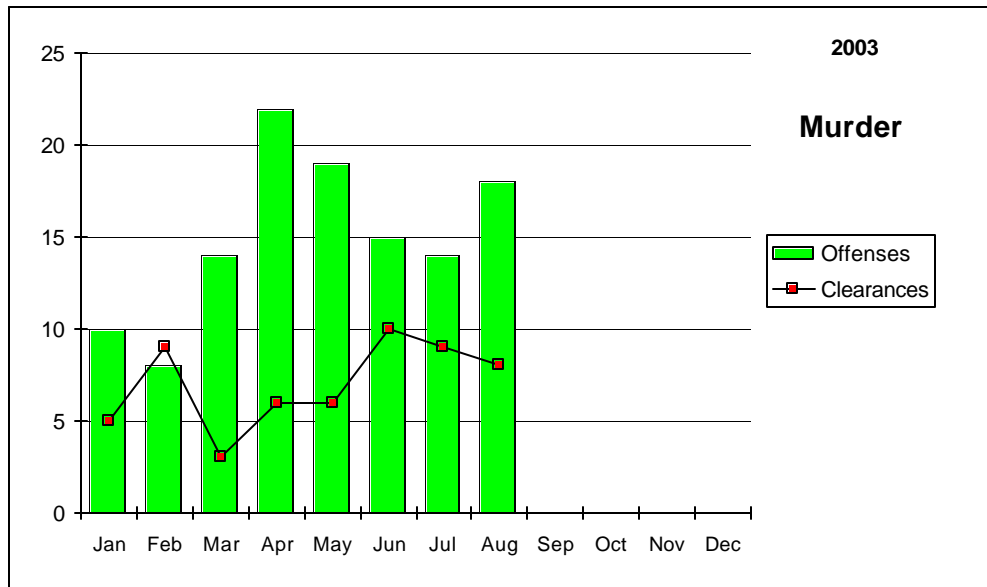
	Murder	Rape	Robbery	Assault	Burglary	Larceny	MV Theft	Arson	Crime Rate
Nevada	0.08	0.41	2.31	3.47	9.85	23.27	9.01	0.26	48.66
National	0.56	0.32	1.48	3.19	7.41	24.85	4.31	0.35	41.85

Nevada (Projected 2003) vs National (2001) Crime Clearance Rates

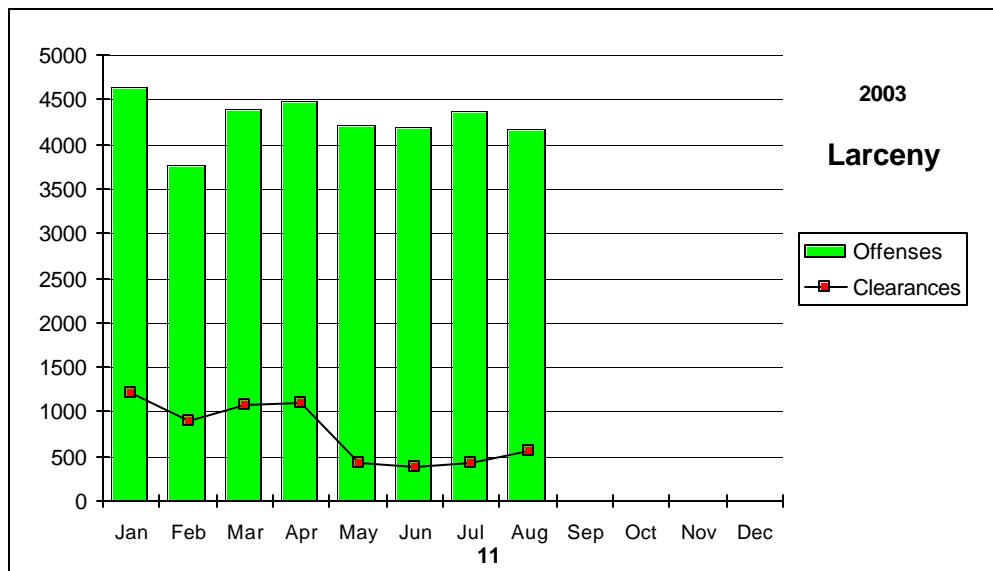
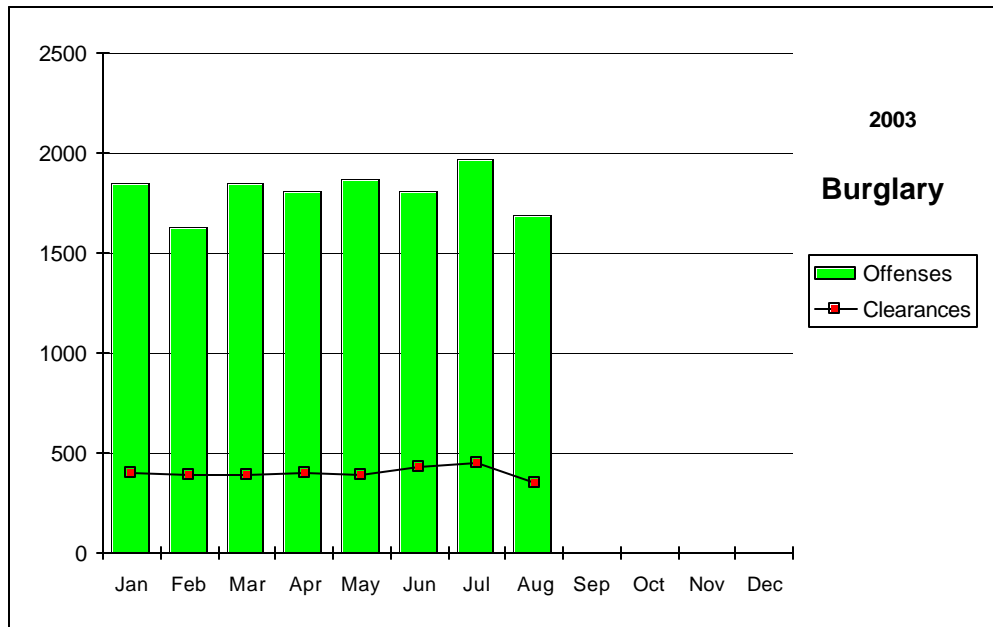
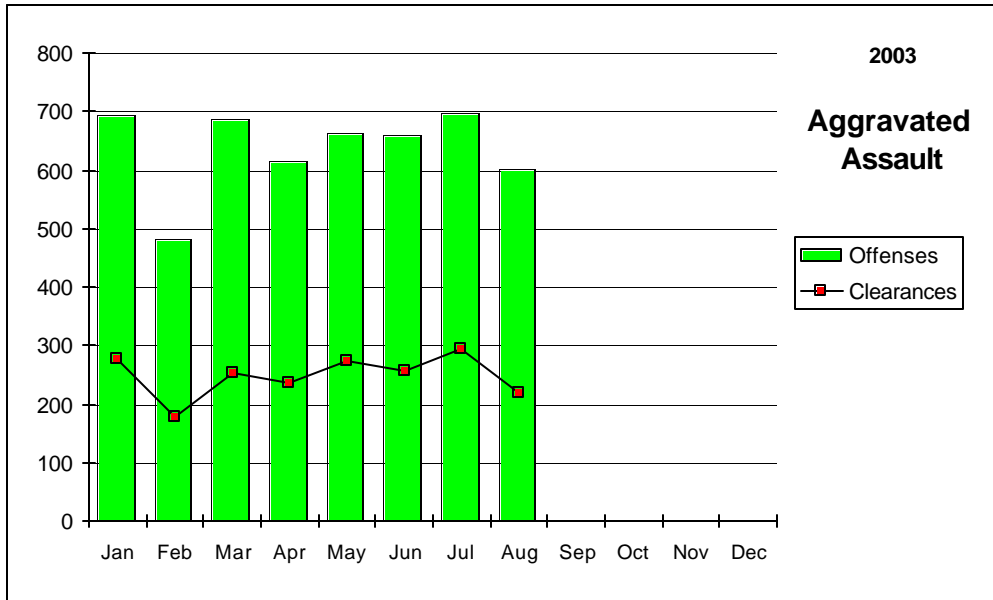
(by Percent)

	Murder	Rape	Robbery	Assault	Burglary	Larceny	MV Theft	Arson	Clear Rate
Nevada	46.67	29.24	20.43	38.94	22.26	17.66	12.32	14.40	19.76
National	62.40	44.30	24.90	56.10	12.70	17.60	13.60	16.00	19.60

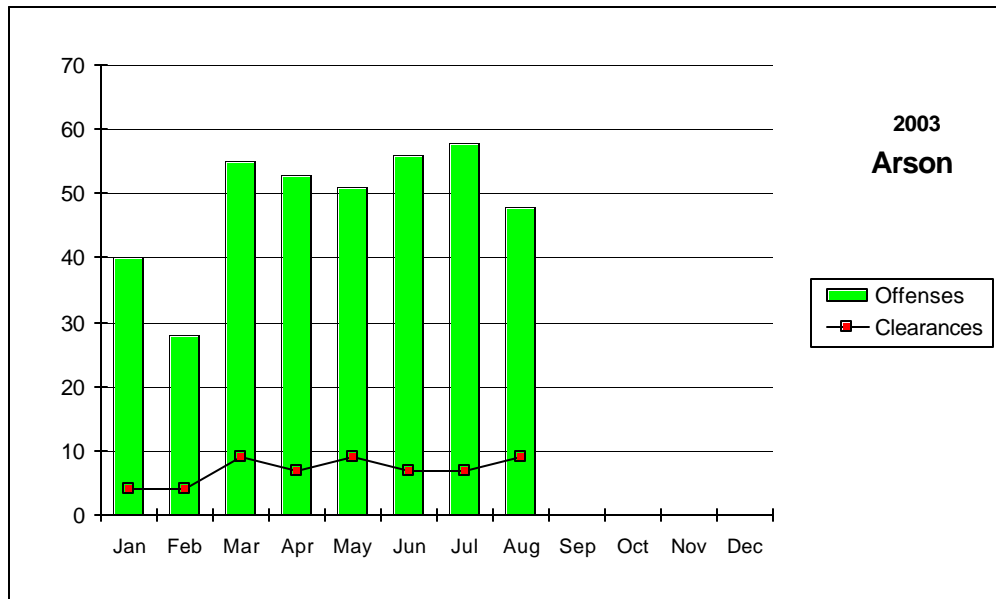
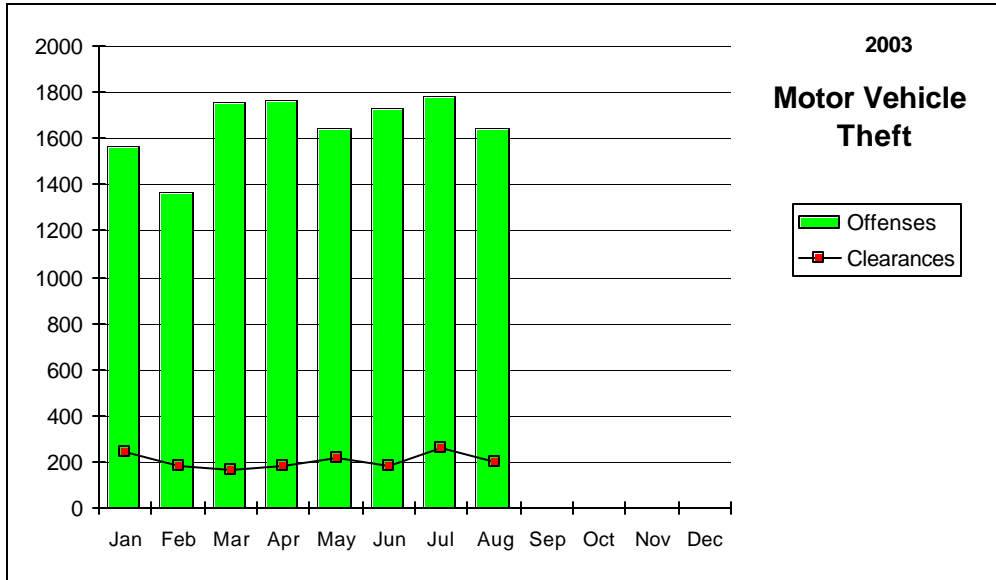
Nevada--Graphic Summary--UCR



Nevada--Graphic Summary--UCR



Nevada--Graphic Summary--UCR



Nevada--Murder--Incidence Level Variation--UCR

AUGUST 2003

Agency	AUGUST 2003 Offenses	AUGUST 2003 Cleared	YTD Offenses	2003 YTD Cleared	AUGUST 2002 Offenses	AUGUST 2002 Cleared	YTD Offenses	2002 YTD Cleared
Boulder	1	0	1	0	0	0	0	0
Carlin PD	0	0	0	0	0	0	0	0
Carson SO	0	0	0	0	0	0	0	0
Churchill SO	0	0	0	0	0	0	0	0
Clark Co Schl PD	0	0	0	0	0	0	0	0
Douglas SO	0	0	0	0	0	0	1	1
Elko PD	0	0	0	0	0	0	0	0
Elko SO	0	0	1	1	0	0	1	1
Esmeralda SO	0	0	0	0	0	0	0	0
Eureka SO	0	0	0	0	0	0	0	0
Fallon PD	0	0	0	0	0	0	0	0
Henderson PD	0	0	2	1	0	0	2	3
Humboldt SO	0	0	0	0	0	0	0	0
Lander SO	0	0	0	0	0	0	0	0
Lincoln SO	0	0	0	0	0	0	0	0
Lovelock PD	0	0	0	0	0	0	0	0
LV Fire Dept	0	0	0	0	0	0	0	0
LV Metro	14	5	87	35	11	6	94	51
Lyon SO	0	0	0	0	0	0	0	0
Mesquite PD	0	0	1	0	0	0	0	0
Mineral SO	0	0	0	0	0	0	1	1
NLVPD	0	0	14	8	3	1	14	3
Nye SO	0	0	0	0	0	0	2	1
Pershing SO	0	0	0	0	0	0	0	0
Reno PD	1	1	7	5	0	0	7	7
Sparks PD	1	1	3	4	0	0	2	5
Storey SO	0	0	0	0	0	0	0	0
TMCC PD	0	0	0	0	0	0	0	0
UNLV PD	0	0	0	0	0	0	0	0
UNR PD	0	0	0	0	0	0	0	0
Washoe SO	1	1	4	2	1	0	1	0
Washoe Co Schl PD	0	0	0	0	0	0	0	0
Wendover PD	0	0	0	0	0	0	1	1
White Pine SO	0	0	0	0	0	0	0	0
Winnemucca PD	0	0	0	0	0	0	0	0
Yerington PD	0	0	0	0	0	0	0	0
TOTALS	18	8	120	56	15	7	126	74

Nevada--Rape--Incidence Level Variation--UCR

AUGUST 2003

Agency	AUGUST 2003 Offenses	AUGUST 2003 Cleared	YTD Offense s	2003 YTD Cleared	AUGUST 2002 Offenses	AUGUST 2002 Cleared	YTD Offense s	2002 YTD Cleared
Boulder	0	0	0	0	0	0	0	0
Carlin PD	0	0	0	0	0	0	0	0
Carson SO	0	0	1	0	3	2	29	6
Churchill SO	2	0	13	3	1	1	14	10
Clark Co Schl PD	0	0	0	0	0	0	0	0
Douglas SO	0	0	0	0	0	0	0	0
Elko PD	1	0	3	3	0	0	2	2
Elko SO	1	1	7	5	0	0	4	0
Esmeralda SO	0	0	0	0	0	0	0	0
Eureka SO	0	0	0	0	0	0	0	0
Fallon PD	0	0	1	0	0	0	1	1
Henderson PD	0	0	60	17	16	5	69	22
Humboldt SO	0	0	0	0	0	0	0	0
Lander SO	0	0	2	0	0	0	0	0
Lincoln SO	0	0	1	0	0	0	0	0
Lovelock PD	0	0	-1	0	0	0	2	1
LV Fire Dept	0	0	0	0	0	0	0	0
LV Metro	46	11	360	81	48	13	295	112
Lyon SO	1	0	5	2	1	0	5	1
Mesquite PD	0	0	0	0	0	0	0	0
Mineral SO	0	0	0	0	0	0	1	1
NLVPD	4	1	34	19	2	2	30	16
Nye SO	0	0	2	2	0	0	0	0
Pershing SO	0	0	2	1	0	0	2	1
Reno PD	10	1	65	9	11	4	90	12
Sparks PD	3	3	35	26	10	7	37	37
Storey SO	0	0	0	0	0	0	1	1
TMCC PD	0	0	0	0	0	0	0	0
UNLV PD	0	0	1	1	1	0	2	0
UNR PD	0	0	2	0	0	0	0	0
Washoe SO	2	1	4	3	2	1	6	2
Washoe Co Schl PD	0	0	0	1	0	0	0	0
Wendover PD	0	0	1	0	0	0	2	2
White Pine SO	0	0	2	1	1	1	1	1
Winnemucca PD	0	0	2	2	0	0	1	1
Yerington PD	0	0	0	0	0	0	0	0
TOTALS	70	18	602	176	96	36	594	229

Nevada--Robbery--Incidence Level Variation--UCR

AUGUST 2003

Agency	AUGUST 2003 Offenses	AUGUST 2003 Cleared	YTD Offenses	2003 YTD Cleared	AUGUST 2002 Offenses	AUGUST 2002 Cleared	YTD Offenses	2002 YTD Cleared
Boulder	0	0	2	1	0	0	2	1
Carlin PD	0	0	0	0	0	0	0	0
Carson SO	2	1	16	5	2	1	20	10
Churchill SO	0	0	0	0	1	0	1	0
Clark Co Schl PD	1	0	23	11	1	0	13	5
Douglas SO	1	1	4	3	0	0	6	4
Elko PD	0	0	7	1	0	0	5	0
Elko SO	0	0	2	2	0	0	3	2
Esmeralda SO	0	0	0	0	0	0	0	0
Eureka SO	0	0	0	0	0	0	0	0
Fallon PD	1	0	6	2	2	0	4	0
Henderson PD	0	0	82	23	16	3	122	25
Humboldt SO	0	0	0	0	0	0	0	0
Lander SO	0	0	1	0	1	0	1	0
Lincoln SO	0	0	0	0	1	0	1	0
Lovelock PD	0	0	0	0	0	0	0	0
LV Fire Dept	0	0	0	0	0	0	0	0
LV Metro	297	45	2638	484	343	50	2332	442
Lyon SO	0	0	4	1	0	0	1	0
Mesquite PD	0	0	3	1	1	1	1	1
Mineral SO	0	0	0	0	0	0	1	1
NLVPD	27	2	216	36	41	11	306	57
Nye SO	1	1	8	3	2	1	13	7
Pershing SO	0	0	0	0	0	0	1	0
Reno PD	51	15	291	87	45	12	284	77
Sparks PD	12	2	61	19	8	5	70	33
Storey SO	0	0	4	2	0	0	0	0
TMCC PD	0	0	0	0	0	0	0	0
UNLV PD	0	0	3	1	0	0	4	1
UNR PD	0	0	0	0	0	0	0	0
Washoe SO	1	0	16	6	1	0	8	3
Washoe Co Schl PD	1	1	5	5	0	0	1	0
Wendover PD	1	0	2	0	0	0	1	0
White Pine SO	0	0	0	0	0	0	2	1
Winnemucca PD	0	0	3	1	0	0	1	0
Yerington PD	0	0	0	0	0	0	0	0
TOTALS	396	68	3397	694	465	84	3204	670

Nevada--Aggravated Assault--Incidence Level Variation--UCR

AUGUST 2003

Agency	AUGUST	AUGUST	2003 YTD		AUGUST	AUGUST	2002 YTD	
	2003 Offenses	2003 Cleared	Offenses	Cleared	2002 Offenses	2002 Cleared	Offenses	Cleared
Boulder	1	0	26	12	2	1	43	31
Carlin PD	1	0	7	6	0	0	5	3
Carson SO	21	12	165	87	10	4	124	57
Churchill SO	1	1	38	29	5	5	23	22
Clark Co SchI PD	0	0	24	13	1	0	25	18
Douglas SO	7	4	27	15	7	3	28	17
Elko PD	1	0	11	2	0	0	14	5
Elko SO	3	1	8	6	0	0	14	7
Esmeralda SO	0	0	1	1	0	0	1	1
Eureka SO	0	0	3	2	1	0	5	2
Fallon PD	1	0	6	3	2	2	9	6
Henderson PD	0	0	118	100	11	7	96	87
Humboldt SO	7	5	34	23	6	3	38	22
Lander SO	4	0	15	5	6	8	28	16
Lincoln SO	0	0	1	1	0	0	1	0
Lovelock PD	1	1	10	8	1	1	3	2
LV Fire Dept	0	0	0	0	0	0	0	0
LV Metro	374	78	3071	713	395	172	3029	1261
Lyon SO	9	9	49	42	10	8	41	38
Mesquite PD	2	2	12	11	2	2	5	5
Mineral SO	0	0	2	2	0	0	3	3
NLVPD	54	32	535	283	88	48	553	302
Nye SO	19	19	63	63	13	13	77	64
Pershing SO	5	3	15	8	1	0	7	6
Reno PD	46	23	448	244	86	42	676	363
Sparks PD	20	16	138	120	25	26	136	122
Storey SO	0	0	0	0	2	1	18	8
TMCC PD	0	0	0	0	0	0	0	0
UNLV PD	0	0	4	3	0	0	3	2
UNR PD	0	0	2	1	0	0	2	2
Washoe SO	21	8	223	144	16	9	106	44
Washoe Co SchI PD	0	0	4	4	0	0	3	3
Wendover PD	2	2	5	5	0	0	8	6
White Pine SO	2	2	22	19	4	3	12	11
Winnemucca PD	1	1	9	8	1	1	6	6
Yerington PD	0	0	4	3	1	1	7	4
TOTALS	603	219	5100	1986	696	360	5149	2546

Nevada--All Assaults--Incidence Level Variation--UCR

AUGUST 2003

Agency	AUGUST 2003 Offenses	AUGUST 2003 Cleared	2003 YTD Offenses	2003 YTD Cleared	AUGUST 2002 Offenses	AUGUST 2002 Cleared	2002 YTD Offenses	2002 YTD Cleared
Boulder	3	2	31	15	5	1	126	35
Carlin PD	2	1	16	12	0	0	13	10
Carson SO	85	47	656	321	70	36	605	326
Churchill SO	18	16	148	116	20	17	143	116
Clark Co Schl PD	8	2	533	334	9	5	508	301
Douglas SO	65	46	373	266	44	32	337	268
Elko PD	32	9	193	79	17	7	168	90
Elko SO	3	1	13	10	4	3	66	41
Esmeralda SO	0	0	2	2	1	1	3	3
Eureka SO	0	0	7	4	1	0	10	4
Fallon PD	25	18	160	105	20	11	134	82
Henderson PD	0	0	1288	923	176	133	1441	1138
Humboldt SO	9	6	43	27	6	3	39	23
Lander SO	6	1	50	34	12	8	43	22
Lincoln SO	1	1	11	8	3	3	16	11
Lovelock PD	6	6	36	34	4	6	42	40
LV Fire Dept	0	0	0	0	0	0	0	0
LV Metro	2132	462	16519	3534	2124	936	15481	6667
Lyon SO	51	51	307	287	47	44	305	299
Mesquite PD	16	16	140	114	19	19	170	121
Mineral SO	0	0	27	29	3	3	24	24
NLVPD	215	128	1911	1002	260	149	1895	1120
Nye SO	73	73	438	438	55	55	455	409
Pershing SO	5	3	29	20	3	3	20	13
Reno PD	445	188	2894	1481	405	196	2743	1411
Sparks PD	167	137	1062	902	148	141	922	816
Storey SO	3	2	17	7	2	1	18	8
TMCC PD	0	0	0	0	0	0	2	0
UNLV PD	0	0	16	12	3	3	13	11
UNR PD	3	1	18	6	1	1	8	7
Washoe SO	74	40	590	380	76	52	583	399
Washoe Co Schl PD	0	0	20	20	7	3	179	169
Wendover PD	5	4	27	23	4	4	34	25
White Pine SO	8	7	74	61	10	9	49	41
Winnemucca PD	9	8	63	58	8	7	67	63
Yerington PD	7	5	44	37	1	2	9	5
TOTALS	3476	1281	27756	10701	3568	1894	26671	14118

Nevada--Burglary--Incidence Level Variation--UCR

AUGUST 2003

Agency	AUGUST 2003 Offenses	AUGUST 2003 Cleared	YTD Offense s	2003 YTD Cleared	AUGUST 2002 Offenses	AUGUST 2002 Cleared	YTD Offense s	2002 YTD Cleared
Boulder	5	1	78	28	13	2	51	8
Carlin PD	2	0	10	5	1	0	8	0
Carson SO	42	3	290	33	37	5	267	36
Churchill SO	7	3	46	14	7	5	44	11
Clark Co Schl PD	25	2	173	32	5	1	211	27
Douglas SO	17	2	183	36	12	1	139	31
Elko PD	18	0	82	7	13	2	98	24
Elko SO	4	0	64	14	13	2	84	18
Esmeralda SO	3	0	5	2	0	0	2	1
Eureka SO	0	0	3	0	0	0	0	0
Fallon PD	4	0	43	10	5	0	36	5
Henderson PD	0	0	754	94	155	21	995	150
Humboldt SO	2	0	19	2	6	0	32	5
Lander SO	1	0	21	4	13	2	26	4
Lincoln SO	1	0	16	8	0	0	7	1
Lovelock PD	4	2	14	8	1	2	14	13
LV Fire Dept	0	0	0	0	0	0	0	0
LV Metro	1095	273	8535	2259	1021	222	7241	2117
Lyon SO	19	5	154	21	19	3	105	18
Mesquite PD	0	0	10	10	1	2	11	7
Mineral SO	9	0	27	3	1	0	17	3
NLVPD	113	11	1125	126	128	6	961	83
Nye SO	29	14	320	143	41	20	280	134
Pershing SO	2	0	28	5	0	0	9	0
Reno PD	135	12	1278	129	114	14	879	96
Sparks PD	78	18	560	142	43	16	453	129
Storey SO	1	0	5	0	0	0	8	1
TMCC PD	0	0	4	0	0	0	5	0
UNLV PD	13	1	96	5	3	0	48	3
UNR PD	2	0	15	0	3	0	17	0
Washoe SO	47	4	357	35	32	1	282	29
Washoe Co Schl PD	1	0	43	8	0	0	3	0
Wendover PD	0	0	13	2	4	4	21	8
White Pine SO	1	0	36	6	3	0	24	1
Winnemucca PD	6	1	39	16	7	1	51	12
Yerington PD	3	0	35	17	2	6	34	21
TOTALS	1689	352	14481	3224	1703	338	12463	2996

Nevada--Larceny--Incidence Level Variation--UCR

AUGUST 2003

Agency	AUGUST 2003 Offenses	AUGUST 2003 Cleared	YTD Offenses	2003 YTD Cleared	AUGUST 2002 Offense	AUGUST 2002 Cleared	YTD Offenses	2002 YTD Cleared
Boulder	7	0	106	12	12	3	94	11
Carlin PD	3	1	22	7	4	0	32	6
Carson SO	94	6	764	149	90	8	815	93
Churchill SO	21	5	105	27	15	3	113	26
Clark Co SchI PD	32	1	530	70	27	0	455	50
Douglas SO	67	13	495	132	51	17	433	136
Elko PD	42	4	248	30	38	3	293	52
Elko SO	14	1	61	9	6	0	67	10
Esmeralda SO	0	0	2	2	0	0	2	0
Eureka SO	0	0	8	2	1	0	9	2
Fallon PD	33	5	290	52	40	7	270	41
Henderson PD	0	0	1593	352	230	56	1711	427
Humboldt SO	2	1	34	13	6	2	45	12
Lander SO	4	2	25	3	8	0	43	3
Lincoln SO	3	2	20	5	1	0	14	1
Lovelock PD	1	0	24	16	3	2	21	12
LV Fire Dept	0	0	0	0	0	0	0	0
LV Metro	2464	192	19670	2842	2165	576	15927	4742
Lyon SO	46	11	273	63	28	3	246	51
Mesquite PD	16	3	157	37	8	5	94	51
Mineral SO	2	1	13	5	0	0	16	6
NLVPD	207	47	1758	368	270	59	2034	460
Nye SO	52	35	366	203	63	31	404	212
Pershing SO	9	2	36	14	7	1	42	8
Reno PD	679	142	4830	982	661	121	5006	861
Sparks PD	198	54	1618	462	226	52	1703	502
Storey SO	3	0	24	2	7	0	26	3
TMCC PD	1	0	8	0	2	0	10	0
UNLV PD	24	0	156	5	26	0	211	12
UNR PD	15	1	84	2	17	0	72	4
Washoe SO	61	6	469	64	76	7	620	109
Washoe Co SchI PD	9	0	164	34	5	0	68	29
Wendover PD	16	5	66	19	18	2	97	20
White Pine SO	12	5	89	20	18	1	81	9
Winnemucca PD	21	8	103	36	17	5	92	28
Yerington PD	2	1	18	7	7	5	29	19
TOTALS	4160	554	34229	6046	4153	969	31195	8008

Nevada--MV Theft--Incidence Level Variation--UCR

AUGUST 2003

Agency	AUGUST 2003 Offenses	AUGUST 2003 Cleared	YTD Offenses	2003 YTD Cleared	AUGUST 2002 Offenses	AUGUST 2002 Cleared	YTD Offenses	2002 YTD Cleared
Boulder	1	1	20	15	2	2	13	5
Carlin PD	0	0	7	3	1	0	5	4
Carson SO	14	2	114	17	11	3	87	12
Churchill SO	4	5	33	15	2	1	21	11
Clark Co Schl PD	4	0	33	2	0	0	32	2
Douglas SO	4	4	35	25	3	2	46	35
Elko PD	5	0	19	4	2	0	21	7
Elko SO	1	1	15	9	1	2	13	9
Esmeralda SO	0	0	0	0	0	0	0	0
Eureka SO	1	0	4	2	0	0	0	0
Fallon PD	1	0	15	3	5	1	16	6
Henderson PD	0	0	746	40	77	6	697	54
Humboldt SO	2	2	4	2	2	1	6	2
Lander SO	1	0	3	1	2	0	6	0
Lincoln SO	1	0	5	0	1	0	6	3
Lovelock PD	0	0	0	0	0	0	3	3
LV Fire Dept	0	0	0	0	0	0	0	0
LV Metro	1255	149	9476	1177	1116	214	7845	1216
Lyon SO	8	3	54	13	6	0	30	10
Mesquite PD	1	1	28	9	2	1	29	13
Mineral SO	0	0	0	0	1	0	1	0
NLVPD	148	5	1150	69	133	7	1012	71
Nye SO	5	5	44	25	3	2	50	31
Pershing SO	0	0	1	0	0	0	2	0
Reno PD	135	10	956	95	83	6	710	65
Sparks PD	31	6	265	67	32	6	197	72
Storey SO	0	0	2	0	0	0	5	3
TMCC PD	0	0	0	0	1	0	1	0
UNLV PD	5	1	59	5	8	0	22	1
UNR PD	1	0	4	0	1	0	3	0
Washoe SO	13	0	117	17	7	5	121	18
Washoe Co Schl PD	0	0	5	2	0	0	0	0
Wendover PD	1	1	9	7	2	1	12	5
White Pine SO	1	0	15	4	1	0	4	0
Winnemucca PD	0	0	11	4	4	2	19	4
Yerington PD	0	0	0	0	0	0	3	1
TOTALS	1643	196	13249	1632	1509	262	11038	1663

Nevada--Arson--Incidence Level Variation--UCR

AUGUST 2003

Agency	AUGUST 2003 Offenses	AUGUST 2003 Cleared	YTD Offenses	2003 YTD Cleared	AUGUST 2002 Offenses	AUGUST 2002 Cleared	YTD Offenses	2002 YTD Cleared
Boulder	0	0	2	1	0	0	3	1
Carlin PD	0	0	0	0	0	0	0	0
Carson SO	1	0	12	1	1	0	9	2
Churchill SO	0	0	1	1	0	0	1	1
Clark Co Schl PD	5	0	52	15	5	0	42	16
Douglas SO	1	0	1	0	0	0	3	3
Elko PD	0	0	1	1	0	0	7	2
Elko SO	1	1	2	1	0	0	1	0
Esmeralda SO	0	0	0	0	0	0	0	0
Eureka SO	0	0	0	0	0	0	1	0
Fallon PD	0	0	0	0	0	0	0	0
Henderson PD	0	0	36	4	10	2	29	6
Humboldt SO	0	0	0	0	0	0	0	0
Lander SO	0	0	0	0	0	0	0	0
Lincoln SO	0	0	0	0	0	0	0	0
Lovelock PD	0	0	0	0	0	0	0	0
LV Fire Dept	8	3	63	7	12	1	107	9
LV Metro	24	3	115	3	7	0	110	0
Lyon SO	1	1	8	4	0	0	2	1
Mesquite PD	0	0	0	0	0	0	0	0
Mineral SO	0	0	0	0	1	0	2	1
NLVPD	2	0	34	6	6	2	40	5
Nye SO	2	0	9	0	1	1	7	4
Pershing SO	0	0	0	0	0	0	0	0
Reno PD	3	1	30	5	5	1	29	7
Sparks PD	0	0	0	0	0	0	0	0
Storey SO	0	0	2	2	0	0	0	0
TMCC PD	0	0	0	0	0	0	0	0
UNLV PD	0	0	1	1	0	0	2	0
UNR PD	0	0	1	0	0	0	1	1
Washoe SO	0	0	5	1	0	0	3	2
Washoe CO Scl PD	0	0	12	3	0	0	2	2
Wendover PD	0	0	0	0	1	0	2	0
White Pine SO	0	0	1	0	0	0	1	1
Winnemucca PD	0	0	1	0	0	0	1	1
Yerington PD	0	0	0	0	0	0	0	0
TOTALS	48	9	389	56	49	7	405	65

Nevada--Hate Crimes--UCR

Aug-03

AGENCY	OFFENSE	LOCATION	BIAS	VICTIM TYPE / NUMBER	OFFENDER RACE / NUMBER
Las Vegas Metro PD	Intimidation	Government/Pulblic Building	Anti-White	Individual- 1	Unknown-00
Las Vegas Metro PD	Simple Assault	Highway/Road/Alley/Street	Anti-Black	Individual- 1	White- 2
Las Vegas Metro PD	Aggravated Assault	Other/Unknown	Anti-Asian/Pacific Islander	Individual- 1	White- 1
Las Vegas Metro PD	Intimidation	Residence/Home	Anti-Jewish	Individual- 1	Unknown-00
Las Vegas Metro PD	Destruction/Damage/Vanalism	Residence/Home	Anti-Multi-Racial Group	Individual- 1	Unknown-00
Las Vegas Metro PD	Aggravated Assault	Highway/Road/Alley/Street	Anti-Black	Individual- 1	White- 1
Las Vegas Metro PD	Intimidation	Commercial/Office Building	Anti-Black	Individual-2	White- 1
Las Vegas Metro PD	Aggravated Assault	Residence/Home	Anti-Black	Individual- 1	White- 1
Las Vegas Metro PD	Simple Assault	Highway/Road/Alley/Street	Anti-Male Homosexual	Individual- 1	White- 2
Las Vegas Metro PD	Intimidation	Residence/Home	Anti-Male Homosexual	Individual- 1	Unknown-00

Stolen/Recovered Property Report

AUGUST 2003

Property Type	Boulder PD	Carlin PD	Carson SO	Churchill SO	Clark Co SchI PD	Douglas SO	Elko PD	Elko SO	Esmeralda SO
Currency									
Stolen	\$376	\$305	\$3,365	\$15	\$268	\$3,700	\$4,820	\$751	\$500
Recovered	\$276	\$0	\$0	\$0	\$0	\$0	\$0	\$0	\$0
% Recovered	73.4%	0.0%	0.0%	0.0%	0.0%	0.0%	0.0%	0.0%	0.0%
Jewelry									
Stolen	\$0	\$0	\$30,369	\$0	\$0	\$7,386	\$116	\$0	\$0
Recovered	\$0	\$0	\$0	\$0	\$0	\$0	\$0	\$0	\$0
% Recovered	0.0%	0.0%	0.0%	0.0%	0.0%	0.0%	0.0%	0.0%	0.0%
Clothing									
Stolen	\$0	\$0	\$385	\$775	\$0	\$4,328	\$135	\$0	\$0
Recovered	\$0	\$0	\$0	\$400	\$0	\$0	\$0	\$0	\$0
% Recovered	0.0%	0.0%	0.0%	51.6%	0.0%	0.0%	0.0%	0.0%	0.0%
Motor Vehicle									
Stolen	\$28,000	\$0	\$68,100	\$28,500	\$27,000	\$25,500	\$51,529	\$4,000	\$0
Recovered	\$28,000	\$0	\$30,600	\$29,200	\$17,000	\$25,500	\$22,350	\$4,000	\$0
% Recovered	100.0%	0.0%	44.9%	102.5%	63.0%	100.0%	43.4%	100.0%	0.0%
Office Equipment									
Stolen	\$6,158	\$0	\$4,616	\$0	\$525	\$0	\$100	\$0	\$0
Recovered	\$4,558	\$0	\$0	\$0	\$0	\$0	\$0	\$0	\$0
% Recovered	74.0%	0.0%	0.0%	0.0%	0.0%	0.0%	0.0%	0.0%	0.0%
TV, VCR, Camera, Etc.									
Stolen	\$0	\$0	\$14,174	\$250	\$1,685	\$7,785	\$6,680	\$0	\$0
Recovered	\$0	\$0	\$0	\$0	\$0	\$0	\$1,710	\$0	\$0
% Recovered	0.0%	0.0%	0.0%	0.0%	0.0%	0.0%	25.6%	0.0%	0.0%
Firearm									
Stolen	\$0	\$0	\$2,175	\$1,887	\$0	\$5,745	\$500	\$0	\$0
Recovered	\$0	\$0	\$0	\$287	\$0	\$600	\$0	\$0	\$0
% Recovered	0.0%	0.0%	0.0%	15.2%	0.0%	10.4%	0.0%	0.0%	0.0%
Household Goods									
Stolen	\$0	\$100	\$1,150	\$10,105	\$0	\$0	\$2,900	\$560	\$0
Recovered	\$0	\$0	\$0	\$7,455	\$0	\$0	\$0	\$0	\$0
% Recovered	0.0%	0.0%	0.0%	73.8%	0.0%	0.0%	0.0%	0.0%	0.0%
Consumable Goods									
Stolen	\$0	\$0	\$23	\$415	\$284	\$16	\$346	\$20	\$0
Recovered	\$0	\$0	\$0	\$22	\$0	\$3	\$11	\$0	\$0
% Recovered	0.0%	0.0%	0.0%	5.3%	0.0%	18.8%	3.2%	0.0%	0.0%
Livestock									
Stolen	\$0	\$0	\$0	\$0	\$0	\$0	\$0	\$0	\$0
Recovered	\$0	\$0	\$0	\$4,083	\$0	\$0	\$0	\$0	\$0
% Recovered	0.0%	0.0%	0.0%	0.0%	0.0%	0.0%	0.0%	0.0%	0.0%
Misc.									
Stolen	\$2,133	\$390	\$105,667	\$13,625	\$43,685	\$38,592	\$7,199	\$9,505	\$2,000
Recovered	\$0	\$300	\$106	\$0	\$60	\$1,673	\$3,295	\$0	\$0
% Recovered	0.0%	76.9%	0.1%	0.0%	0.1%	4.3%	45.8%	0.0%	0.0%
TOTALS									
Stolen	\$36,667	\$795	\$230,024	\$55,572	\$73,447	\$93,052	\$74,325	\$14,836	\$2,500
Recovered	\$32,834	\$300	\$30,706	\$41,447	\$17,060	\$27,776	\$27,366	\$4,000	\$0
% Recovered	89.5%	37.7%	13.3%	74.6%	23.2%	29.8%	36.8%	27.0%	0.0%

Stolen/Recovered Property Report

AUGUST 2003

Property Type	Eureka SO	Fallon PD	Henderson PD	Humboldt SO	Lander SO	Las Vegas Metro	Lincoln SO	Lovelock PD	Lyon SO
Currency									
Stolen	\$0	\$20	\$0	\$0	\$0	\$1,326,378	\$205	\$20	\$53,572
Recovered	\$0	\$0	\$0	\$0	\$0	\$5,644	\$5	\$0	\$0
% Recovered	0.0%	0.0%	0.0%	0.0%	0.0%	0.4%	2.4%	0.0%	0.0%
Jewelry									
Stolen	\$0	\$0	\$0	\$0	\$0	\$2,051,778	\$19,713	\$0	\$12,900
Recovered	\$0	\$0	\$0	\$0	\$0	\$37,066	\$19,513	\$0	\$0
% Recovered	0.0%	0.0%	0.0%	0.0%	0.0%	1.8%	99.0%	0.0%	0.0%
Clothing									
Stolen	\$0	\$0	\$0	\$0	\$2	\$302,335	\$90	\$0	\$424
Recovered	\$0	\$0	\$0	\$0	\$2	\$26,639	\$90	\$0	\$317
% Recovered	0.0%	0.0%	0.0%	0.0%	100.0%	8.8%	100.0%	0.0%	74.8%
Motor Vehicle									
Stolen	\$500	\$0	\$0	\$1,900	\$1	\$3,907,053	\$10,000	\$0	\$38,673
Recovered	\$0	\$0	\$0	\$1,900	\$1	\$1,375,832	\$0	\$0	\$36,000
% Recovered	0.0%	0.0%	0.0%	100.0%	100.0%	35.2%	0.0%	0.0%	93.1%
Office Equipment									
Stolen	\$0	\$90	\$0	\$0	\$0	\$870,793	\$50	\$0	\$0
Recovered	\$0	\$0	\$0	\$0	\$0	\$14,487	\$50	\$0	\$0
% Recovered	0.0%	0.0%	0.0%	0.0%	0.0%	1.7%	100.0%	0.0%	0.0%
TV, VCR, Camera, Etc.									
Stolen	\$0	\$248	\$0	\$120	\$400	\$967,858	\$0	\$0	\$3,400
Recovered	\$0	\$0	\$0	\$120	\$400	\$19,833	\$0	\$0	\$115
% Recovered	0.0%	0.0%	0.0%	100.0%	100.0%	2.0%	0.0%	0.0%	3.4%
Firearm									
Stolen	\$0	\$2,190	\$0	\$0	\$0	\$65,478	\$0	\$0	\$0
Recovered	\$0	\$0	\$0	\$0	\$0	\$1,800	\$0	\$0	\$500
% Recovered	0.0%	0.0%	0.0%	0.0%	0.0%	2.7%	0.0%	0.0%	0.0%
Household Goods									
Stolen	\$0	\$0	\$0	\$40	\$0	\$158,964	\$3	\$0	\$22,951
Recovered	\$0	\$0	\$0	\$0	\$0	\$1,152	\$3	\$0	\$1,919
% Recovered	0.0%	0.0%	0.0%	0.0%	0.0%	0.7%	100.0%	0.0%	8.4%
Consumable Goods									
Stolen	\$0	\$25	\$0	\$15	\$0	\$33,571	\$0	\$0	\$1,384
Recovered	\$0	\$4	\$0	\$0	\$0	\$6,064	\$0	\$0	\$421
% Recovered	0.0%	16.0%	0.0%	0.0%	0.0%	18.1%	0.0%	0.0%	30.4%
Livestock									
Stolen	\$0	\$0	\$0	\$0	\$0	\$1,510	\$0	\$0	\$300
Recovered	\$0	\$0	\$0	\$0	\$0	\$0	\$0	\$0	\$0
% Recovered	0.0%	0.0%	0.0%	0.0%	0.0%	0.0%	0.0%	0.0%	0.0%
Misc.									
Stolen	\$0	\$2,493	\$0	\$2,645	\$641	\$2,722,083	\$644	\$771	\$5,209
Recovered	\$0	\$377	\$0	\$2,645	\$0	\$228,887	\$28	\$100	\$0
% Recovered	0.0%	15.1%	0.0%	100.0%	0.0%	8.4%	4.3%	13.0%	0.0%
TOTALS									
Stolen	\$500	\$5,066	\$0	\$4,720	\$1,044	\$12,407,801	\$30,705	\$791	\$138,814
Recovered	\$0	\$381	\$0	\$4,665	\$403	\$1,717,404	\$19,689	\$100	\$39,272
% Recovered	0.0%	7.5%	0.0%	98.8%	38.6%	13.8%	64.1%	12.6%	28.3%

Stolen/Recovered Property Report

AUGUST 2003

Property Type	Mesquite PD	Mineral SO	NLVPD	Nye SO	Pershing SO	Reno PD	Sparks PD	Storey SO	TMCC PD	UNLV PD
Currency										
Stolen	\$175	\$20	\$25,817	\$1,450	\$50	\$91,417	\$10,230	\$220	\$0	\$288
Recovered	\$0	\$20	\$0	\$0	\$102	\$164	\$177	\$0	\$0	\$0
% Recovered	0.0%	100.0%	0.0%	0.0%	204.0%	0.2%	1.7%	0.0%	0.0%	0.0%
Jewelry										
Stolen	\$0	\$0	\$44,051	\$3,500	\$0	\$60,089	\$58,060	\$0	\$0	\$1,200
Recovered	\$0	\$0	\$50	\$500	\$0	\$1,131	\$15,286	\$0	\$0	\$0
% Recovered	0.0%	0.0%	0.1%	14.3%	0.0%	1.9%	26.3%	0.0%	0.0%	0.0%
Clothing										
Stolen	\$0	\$0	\$11,635	\$950	\$30	\$13,741	\$3,368	\$0	\$0	\$740
Recovered	\$0	\$0	\$504	\$0	\$0	\$1,936	\$1,446	\$0	\$0	\$0
% Recovered	0.0%	0.0%	4.3%	0.0%	0.0%	14.1%	42.9%	0.0%	0.0%	0.0%
Motor Vehicle										
Stolen	\$0	\$0	\$1,313,204	\$29,600	\$2,500	\$765,455	\$308,930	\$0	\$0	\$4,000
Recovered	\$6,000	\$0	\$1,052,870	\$22,000	\$2,500	\$604,255	\$239,230	\$0	\$0	\$2,000
% Recovered	0.0%	0.0%	80.2%	74.3%	100.0%	78.9%	77.4%	0.0%	0.0%	50.0%
Office Equipment										
Stolen	\$0	\$0	\$1,200	\$1,950	\$0	\$36,437	\$13,595	\$0	\$0	\$0
Recovered	\$0	\$0	\$0	\$950	\$0	\$10	\$8,739	\$0	\$0	\$0
% Recovered	0.0%	0.0%	0.0%	48.7%	0.0%	0.0%	64.3%	0.0%	0.0%	0.0%
TV, VCR, Camera, Etc.										
Stolen	\$100	\$2,396	\$83,077	\$500	\$200	\$107,575	\$55,860	\$0	\$0	\$1,634
Recovered	\$0	\$2,396	\$2,021	\$0	\$0	\$1,072	\$9,021	\$0	\$0	\$0
% Recovered	0.0%	100.0%	2.4%	0.0%	0.0%	1.0%	16.1%	0.0%	0.0%	0.0%
Firearm										
Stolen	\$200	\$0	\$15,350	\$0	\$0	\$11,783	\$6,390	\$0	\$0	\$0
Recovered	\$0	\$0	\$0	\$0	\$0	\$0	\$0	\$0	\$0	\$0
% Recovered	0.0%	0.0%	0.0%	0.0%	0.0%	0.0%	0.0%	0.0%	0.0%	0.0%
Household Goods										
Stolen	\$0	\$20	\$15,617	\$1,650	\$0	\$2,657	\$46,410	\$0	\$50	\$0
Recovered	\$0	\$20	\$0	\$750	\$0	\$44	\$9,336	\$0	\$0	\$0
% Recovered	0.0%	100.0%	0.0%	45.5%	0.0%	1.7%	20.1%	0.0%	0.0%	0.0%
Consumable Goods										
Stolen	\$0	\$0	\$806,138	\$89	\$2	\$2,345	\$2,348	\$0	\$0	\$0
Recovered	\$0	\$0	\$198	\$89	\$0	\$261	\$671	\$0	\$0	\$0
% Recovered	0.0%	0.0%	0.0%	100.0%	0.0%	11.1%	28.6%	0.0%	0.0%	0.0%
Livestock										
Stolen	\$0	\$0	\$0	\$0	\$2	\$0	\$0	\$0	\$0	\$0
Recovered	\$0	\$0	\$0	\$0	\$0	\$0	\$0	\$0	\$0	\$0
% Recovered	0.0%	0.0%	0.0%	0.0%	0.0%	0.0%	0.0%	0.0%	0.0%	0.0%
Misc.										
Stolen	\$78,127	\$460	\$210,129	\$24,519	\$2,427	\$306,586	\$192,241	\$5,080	\$75	\$5,935
Recovered	\$0	\$460	\$5,968	\$15,320	\$0	\$3,951	\$67,257	\$0	\$0	\$101
% Recovered	0.0%	100.0%	2.8%	62.5%	0.0%	1.3%	35.0%	0.0%	0.0%	1.7%
TOTALS										
Stolen	\$78,602	\$2,896	\$2,526,218	\$64,208	\$5,211	\$1,398,085	\$697,432	\$5,300	\$125	\$13,797
Recovered	\$6,000	\$2,896	\$1,061,611	\$39,609	\$2,602	\$612,824	\$351,163	\$0	\$0	\$2,101
% Recovered	7.6%	100.0%	42.0%	61.7%	49.9%	43.8%	50.4%	0.0%	0.0%	15.2%

Stolen/Recovered Property Report

AUGUST 2003

Property Type	UNR PD	Washoe SO	Washoe Co Schl PD	Wendover PD	White Pine SO	Winnemucca PD	Yerington PD	Total By Property
Currency								
Stolen	\$1,220	\$18,593	\$200	\$1,949	\$0	\$9,524	\$120	\$1,555,568
Recovered	\$0	\$300	\$0	\$1,189	\$0	\$0	\$0	\$7,877
% Recovered	0.0%	1.6%	0.0%	61.0%	0.0%	0.0%	0.0%	0.5%
Jewelry								
Stolen	\$0	\$58,593	\$0	\$610	\$3,500	\$10,475	\$0	\$2,362,340
Recovered	\$0	\$0	\$0	\$0	\$0	\$0	\$0	\$73,546
% Recovered	0.0%	0.0%	0.0%	0.0%	0.0%	0.0%	0.0%	3.1%
Clothing								
Stolen	\$0	\$2,820	\$0	\$1,000	\$0	\$22	\$0	\$342,780
Recovered	\$0	\$0	\$0	\$0	\$0	\$0	\$0	\$31,334
% Recovered	0.0%	0.0%	0.0%	0.0%	0.0%	0.0%	0.0%	9.1%
Motor Vehicle								
Stolen	\$10,268	\$120,762	\$0	\$1,000	\$500	\$0	\$0	\$6,746,975
Recovered	\$10,268	\$34,000	\$0	\$1,000	\$500	\$0	\$0	\$3,545,006
% Recovered	100.0%	28.2%	0.0%	100.0%	100.0%	0.0%	0.0%	52.5%
Office Equipment								
Stolen	\$800	\$1,305	\$2,267	\$0	\$0	\$0	\$0	\$939,886
Recovered	\$0	\$0	\$0	\$0	\$0	\$0	\$0	\$28,794
% Recovered	0.0%	0.0%	0.0%	0.0%	0.0%	0.0%	0.0%	3.1%
TV, VCR, Camera, Etc.								
Stolen	\$3,465	\$6,121	\$2,995	\$937	\$165	\$650	\$0	\$1,268,275
Recovered	\$0	\$0	\$0	\$0	\$0	\$0	\$0	\$36,688
% Recovered	0.0%	0.0%	0.0%	0.0%	0.0%	0.0%	0.0%	2.9%
Firearm								
Stolen	\$0	\$2,370	\$0	\$0	\$200	\$800	\$0	\$115,068
Recovered	\$0	\$310	\$0	\$0	\$0	\$0	\$0	\$3,497
% Recovered	0.0%	13.1%	0.0%	0.0%	0.0%	0.0%	0.0%	3.0%
Household Goods								
Stolen	\$0	\$2,525	\$0	\$0	\$2,070	\$150	\$0	\$267,922
Recovered	\$0	\$0	\$0	\$0	\$0	\$0	\$0	\$20,679
% Recovered	0.0%	0.0%	0.0%	0.0%	0.0%	0.0%	0.0%	7.7%
Consumable Goods								
Stolen	\$0	\$148	\$0	\$160	\$94	\$23	\$21	\$847,468
Recovered	\$0	\$0	\$0	\$0	\$12	\$3	\$21	\$7,779
% Recovered	0.0%	0.0%	0.0%	0.0%	12.2%	13.0%	100.0%	0.9%
Livestock								
Stolen	\$0	\$0	\$0	\$0	\$0	\$0	\$0	\$1,812
Recovered	\$0	\$0	\$0	\$0	\$0	\$0	\$0	\$4,083
% Recovered	0.0%	0.0%	0.0%	0.0%	0.0%	0.0%	0.0%	225.3%
Misc.								
Stolen	\$3,879	\$119,170	\$1,300	\$1,355	\$2,066	\$9,283	\$248	\$3,920,162
Recovered	\$0	\$720	\$0	\$0	\$20	\$1,620	\$0	\$332,888
% Recovered	0.0%	0.6%	0.0%	0.0%	1.0%	17.5%	0.0%	8.5%
TOTALS								
Stolen	\$19,632	\$332,407	\$6,762	\$7,011	\$8,595	\$30,927	\$389	\$18,368,256
Recovered	\$10,268	\$35,330	\$0	\$2,189	\$532	\$1,623	\$21	\$4,092,172
% Recovered	52.3%	10.6%	0.0%	31.2%	6.2%	5.2%	5.4%	22.3%

Nevada--Assaults on Officers by Agency--UCR

AUGUST 2003

Agency	AUGUST 2003 Offenses	AUGUST 2003 Cleared	2003 YTD Offenses	2003 YTD Cleared	AUGUST 2002 Offenses	AUGUST 2002 Cleared	2002 YTD Offenses	2002 YTD Cleared
Boulder	0	0	0	0	0	0	0	0
Carlin PD	0	0	0	0	0	0	3	3
Carson SO	2	2	9	9	0	0	9	8
Churchill SO	0	0	5	5	1	1	2	2
CirkSchIDst PD	0	0	0	0	0	0	0	0
Douglas SO	1	1	7	7	0	0	5	5
Elko PD	1	1	5	5	1	1	3	3
Elko SO	0	0	0	0	0	0	0	0
Esmeralda SO	0	0	0	0	0	0	0	0
Eureka SO	0	0	0	0	0	0	0	0
Fallon PD	0	0	0	0	0	0	0	0
Henderson PD	0	0	9	9	0	0	22	22
Highway Patrol	6	6	19	17	2	2	17	17
Humboldt SO	1	1	3	3	0	0	3	3
Lander SO	0	0	0	0	0	0	0	0
Lincoln SO	0	0	0	0	0	0	0	0
Lovelock PD	0	0	0	0	0	0	0	0
LV Fire Dept	0	0	0	0	0	0	0	0
LV Metro	24	24	217	217	28	28	182	182
Lyon SO	2	2	4	4	0	0	4	4
Mesquite PD	0	0	0	0	0	0	0	0
Mineral SO	0	0	0	0	0	0	3	3
NV Div Investigations	0	0	0	0	0	0	0	0
NLVPD	4	4	47	44	12	12	53	53
Nye SO	0	0	6	6	3	3	9	9
Pershing SO	0	0	0	0	0	0	0	0
Reno PD	2	2	11	10	1	1	1	1
Sparks PD	2	2	8	8	0	0	3	3
Storey SO	0	0	0	0	0	0	0	0
TMCC PD	0	0	0	0	0	0	0	0
UNLV PD	0	0	4	4	0	0	1	1
UNR PD	0	0	0	0	0	0	0	0
Washoe SO	0	0	2	2	0	0	13	11
Washoe Co Schl PD	0	0	0	0	0	0	3	3
Wendover PD	0	0	1	1	1	1	1	1
White Pine SO	0	0	0	0	0	0	0	0
Winnemucca PD	0	0	1	1	0	0	3	3
Yerington PD	0	0	0	0	0	0	0	0
TOTALS	45	45	358	352	49	49	340	337

Nevada -- Assaults by Agency/Weapon/Assignment -- UCR

AUGUST 2003

Table 16

Agency	Total Assaults	Number Cleared	Firearm	Knife / Cutting Device	Other Danger. Weapon	Hands, Fists, Feet, Etc.	2-Officer Vehicle	1-Officer Vehicle- Alone	1-Officer Vehicle- Assisted	Det./Spec. Assign. - Alone	Det./Spec. Assign. - Assisted	Other- Alone	Other- Assisted
Boulder City PD	0	0	0	0	0	0	0	0	0	0	0	0	0
Carlin PD	0	0	0	0	0	0	0	0	0	0	0	0	0
Carson City SO	2	2	0	0	0	2	1	1	0	0	0	0	0
Churchill Co SO	0	0	0	0	0	0	0	0	0	0	0	0	0
Clark School Dist PD	0	0	0	0	0	0	0	0	0	0	0	0	0
Douglas Co SO	1	1	0	0	0	1	1	0	1	0	0	0	0
Elko PD	1	1	0	0	0	1	0	0	1	0	0	0	0
Elko Co SO	0	0	0	0	0	0	0	0	0	0	0	0	0
Esmeralda Co SO	0	0	0	0	0	0	0	0	0	0	0	0	0
Eureka Co SO	0	0	0	0	0	0	0	0	0	0	0	0	0
Fallon PD	0	0	0	0	0	0	0	0	0	0	0	0	0
Henderson PD	0	0	0	0	0	0	0	0	0	0	0	0	0
NV Highway Patrol	6	6	0	0	1	5	0	6	0	0	0	0	0
Humboldt Co SO	1	1	0	1	0	0	0	0	0	1	0	0	0
Lander Co SO	0	0	0	0	0	0	0	0	0	0	0	0	0
Lincoln Co SO	0	0	0	0	0	0	0	0	0	0	0	0	0
Lovelock PD	0	0	0	0	0	0	0	0	0	0	0	0	0
Las Vegas Fire Dept	0	0	0	0	0	0	0	0	0	0	0	0	0
Las Vegas Metro PD	24	24	0	0	4	20	13	1	7	1	1	0	1
Lyon Co SO	2	2	0	0	0	2	0	0	2	0	0	0	0
Mesquite PD	0	0	0	0	0	0	0	0	0	0	0	0	0
Mineral Co SO	0	0	0	0	0	0	0	0	0	0	0	0	0
NV Div of Investigations	0	0	0	0	0	0	0	0	0	0	0	0	0
North Las Vegas PD	4	4	0	0	1	3	3	0	0	0	0	1	0
Nye Co SO	0	0	0	0	0	0	0	0	0	0	0	0	0
Pershing Co SO	0	0	0	0	0	0	0	0	0	0	0	0	0
Reno PD	2	2	0	0	0	2	0	0	2	0	0	0	0
Sparks PD	2	2	0	0	0	2	0	0	2	0	0	0	0
Storey Co SO	0	0	0	0	0	0	0	0	0	0	0	0	0
TMCC PD	0	0	0	0	0	0	0	0	0	0	0	0	0
UNLV PD	0	0	0	0	0	0	0	0	0	0	0	0	0
UNR PD	0	0	0	0	0	0	0	0	0	0	0	0	0
Washoe Co SO	0	0	0	0	0	0	0	0	0	0	0	0	0
Washoe Co School PD	0	0	0	0	0	0	0	0	0	0	0	0	0
West Wendover PD	0	0	0	0	0	0	0	0	0	0	0	0	0
White Pine Co SO	0	0	0	0	0	0	0	0	0	0	0	0	0
Winnemucca PD	0	0	0	0	0	0	0	0	0	0	0	0	0
Yerington PD	0	0	0	0	0	0	0	0	0	0	0	0	0
TOTALS	45	45	0	1	6	38	18	8	15	2	1	1	1

28

Nevada -- Officer Assaults by Activity/Weapon/Assignment -- UCR

AUGUST 2003

Table 17

ACTIVITY TYPE	Total Assaults	Number Cleared	Firearm	Knife / Cutting Device	Other Danger. Weapon	Hands, Fists, Feet, Etc.	2-Officer Vehicle	1-Officer Vehicle- Alone	1-Officer Vehicle- Assisted	Det./Spec. Assign.- Alone	Det./Spec. Assign.- Assisted	Other- Alone	Other- Assisted
DOMESTIC / OTHER DISTURBANCE	10	10	0	0	0	10	5	0	5	0	0	0	0
BURGLARY IN PROGRESS	0	0	0	0	0	0	0	0	0	0	0	0	0
ROBBERY IN PROGRESS	0	0	0	0	0	0	0	0	0	0	0	0	0
ATTEMPTING OTHER ARREST	3	3	0	0	0	3	1	0	2	0	0	0	0
CIVIL DISORDER	0	0	0	0	0	0	0	0	0	0	0	0	0
HANDLING PRISONER	11	11	0	0	0	11	6	1	2	1	1	0	1
INVEST. SUSP. PERSONS / CIRCUM.	5	5	0	0	0	5	2	0	3	0	0	0	0
AMBUSH-NO WARNING	0	0	0	0	0	0	0	0	0	0	0	0	0
MENTALLY DERANGED	0	0	0	0	0	0	0	0	0	0	0	0	0
TRAFFIC PURSUITS / STOPS	12	12	0	1	5	6	2	6	3	1	0	0	0
ALL OTHER	4	4	0	0	1	3	2	1	0	0	0	1	0
TOTALS	45	45	0	1	6	38	18	8	15	2	1	1	1

29

Nevada--Assaults with Injury/without Injury--UCR

AUGUST 2003

Agency	Total Assaults by weapon		Firearm		Cutting Instruments		Other Dangerous weapons		Hands, Fists, Feet, Etc.		
	With personal injury	Without personal injury	With personal injury	Without personal injury	With personal injury	Without personal injury	With personal injury	Without personal injury	With personal injury	Without personal injury	
Boulder City PD	0	0	0	0	0	0	0	0	0	0	
Carlin PD	0	0	0	0	0	0	0	0	0	0	
Carson City SO	2	1	1	0	0	0	0	0	1	1	
Churchill Co SO	0	0	0	0	0	0	0	0	0	0	
Clark Co Schl Dist PD	0	0	0	0	0	0	0	0	0	0	
Douglas Co SO	0	0	0	0	0	0	0	0	0	0	
Elko Co SO	0	0	0	0	0	0	0	0	0	0	
Elko PD	1	0	1	0	0	0	0	0	0	1	
Esmeralda Co SO	0	0	0	0	0	0	0	0	0	0	
Eureka Co SO	0	0	0	0	0	0	0	0	0	0	
Fallon PD	0	0	0	0	0	0	0	0	0	0	
Henderson PD	0	0	0	0	0	0	0	0	0	0	
NV Highway Patrol	6	2	4	0	0	0	0	1	2	3	
Humboldt Co SO	1	0	1	0	0	1	0	0	0	0	
Lander Co SO	0	0	0	0	0	0	0	0	0	0	
Las Vegas Metro PD	24	5	19	0	0	0	0	4	5	15	
Lincoln Co SO	0	0	0	0	0	0	0	0	0	0	
Lovelock PD	0	0	0	0	0	0	0	0	0	0	
Lyon Co SO	2	1	1	0	0	0	0	0	1	1	
Mesquite PD	0	0	0	0	0	0	0	0	0	0	
Mineral Co SO	0	0	0	0	0	0	0	0	0	0	
NV Div Investigations	0	0	0	0	0	0	0	0	0	0	
North Las Vegas PD	4	1	3	0	0	0	0	1	1	2	
Nye Co SO	0	0	0	0	0	0	0	0	0	0	
Pershing Co SO	0	0	0	0	0	0	0	0	0	0	
Reno PD	2	1	1	0	0	0	0	0	1	1	
Sparks PD	2	0	2	0	0	0	0	0	0	2	
Storey Co SO	0	0	0	0	0	0	0	0	0	0	
TMCC PD	0	0	0	0	0	0	0	0	0	0	
UNLV PD	0	0	0	0	0	0	0	0	0	0	
UNR PD	0	0	0	0	0	0	0	0	0	0	
Washoe Co SO	0	0	0	0	0	0	0	0	0	0	
Washoe Co School Dist.	0	0	0	0	0	0	0	0	0	0	
West Wendover PD	0	0	0	0	0	0	0	0	0	0	
White Pine Co SO	0	0	0	0	0	0	0	0	0	0	
Winnemucca PD	0	0	0	0	0	0	0	0	0	0	
Yerington PD	0	0	0	0	0	0	0	0	0	0	
Totals	44	11	33	0	0	0	1	0	6	11	26

Nevada--Time of Assaults on Officers--UCR

AUGUST 2003

Agency	2:00 AM	4:00 AM	6:00 AM	8:00 AM	10:00 AM	12:00 AM	12:01- 2:00 PM	2:00- 4:00 PM	4:00- 6:00 PM	6:00- 8:00 PM	10:00 PM	10:00- 12:00 PM
Boulder City PD	0	0	0	0	0	0	0	0	0	0	0	0
Carlin PD	0	0	0	0	0	0	0	0	0	0	0	0
Carson City SO	0	0	0	0	1	0	0	1	0	0	0	0
Churchill Co SO	0	0	0	0	0	0	0	0	0	0	0	0
Clark Co Schl Dist PD	0	0	0	0	0	0	0	0	0	0	0	0
Douglas Co SO	0	1	0	0	0	0	0	0	0	0	0	0
Elko Co SO	0	0	0	0	0	0	0	0	0	0	0	0
Elko PD	0	0	0	0	0	0	1	0	0	0	0	0
Esmeralda Co SO	0	0	0	0	0	0	0	0	0	0	0	0
Eureka Co SO	0	0	0	0	0	0	0	0	0	0	0	0
Fallon PD	0	0	0	0	0	0	0	0	0	0	0	0
Henderson PD	0	0	0	0	0	0	0	0	0	0	0	0
Highway Patrol	1	0	0	0	0	0	0	0	1	2	2	0
Humbolt Co SO	0	0	0	0	0	0	0	0	1	0	0	0
Lander Co SO	0	0	0	0	0	0	0	0	0	0	0	0
Las Vegas Metro PD	3	2	1	0	3	3	0	0	4	4	0	4
Lincoln Co SO	0	0	0	0	0	0	0	0	0	0	0	0
Lovelock PD	0	0	0	0	0	0	0	0	0	0	0	0
Lyon Co SO	0	0	0	0	0	0	0	0	2	0	0	0
Mesquite PD	0	0	0	0	0	0	0	0	0	0	0	0
Mineral Co SO	0	0	0	0	0	0	0	0	0	0	0	0
NV Div Investigations	0	0	0	0	0	0	0	0	0	0	0	0
North LV PD	0	0	0	0	1	0	0	0	0	0	0	3
Nye Co SO	0	0	0	0	0	0	0	0	0	0	0	0
Pershing Co SO	0	0	0	0	0	0	0	0	0	0	0	0
Reno PD	2	0	0	0	0	0	0	0	0	0	0	0
Sparks PD	2	0	0	0	0	0	0	0	0	0	0	0
Storey Co SO	0	0	0	0	0	0	0	0	0	0	0	0
TMCC PD	0	0	0	0	0	0	0	0	0	0	0	0
UNLV PD	0	0	0	0	0	0	0	0	0	0	0	0
UNR PD	0	0	0	0	0	0	0	0	0	0	0	0
Washoe Co SO	0	0	0	0	0	0	0	0	0	0	0	0
Washoe Co Schl PD	0	0	0	0	0	0	0	0	0	0	0	0
West Wendover PD	0	0	0	0	0	0	0	0	0	0	0	0
White Pine Co SO	0	0	0	0	0	0	0	0	0	0	0	0
Winnemucca PD	0	0	0	0	0	0	0	0	0	0	0	0
Yerington PD	0	0	0	0	0	0	0	0	0	0	0	0
Totals	8	3	1	0	5	3	1	1	8	6	2	7

Nevada -- Highway Patrol DUI Arrests -- UCR

AUGUST 2003

		Age																				Total			
		10- <10	13- 12	14	15	16	17	18	19	20	21	22	23	24	25- 29	30- 34	35- 39	40- 44	45- 49	50- 54	55- 59	60- 64	>64	Unknown	Total
Carson City	M																	1							1
	F																								0
Churchill	M																								0
	F																								0
Clark	M																								0
	F																								0
Douglas	M											1													1
	F																								0
Elko	M																	1							1
	F																								0
Esmeralda	M																								0
	F																								0
Eureka	M																								0
	F																								0
Humboldt	M																								0
	F																								0
Lander	M																								0
	F																								0
Lincoln	M																								0
	F																								0
Lyon	M																								0
	F																								0
Mineral	M																								0
	F																								0
Nye	M																								0
	F																								0
Pershing	M																								0
	F																								0
Storey	M																								0
	F																								0
Washoe	M											1			1			1							3
	F																								0
White Pine	M																								0
	F																								0
Unknown County*	M																								0
	F																								0
Total		0	0	0	0	0	0	0	0	0	0	0	2	0	1	0	0	3	0	0	0	0	0	0	6

*Due to error in reporting

Nevada -- Highway Patrol Drug Arrests -- UCR

AUGUST 2003

		10-	13-												25-	30-	35-	40-	45-	50-	55-	60-	Age		Total	
		<10	12	14	15	16	17	18	19	20	21	22	23	24	29	34	39	44	49	54	59	64	>64	Unknown	Total	
Carson City	M																								0	
	F																									0
Churchill	M																									0
	F																									0
Clark	M																									0
	F																									0
Douglas	M																									0
	F																									0
Elko	M																									0
	F																									0
Esmeralda	M																									0
	F																									0
Eureka	M																									0
	F																									0
Humboldt	M																									0
	F																									0
Lander	M																									0
	F																									0
Lincoln	M																			1						1
	F																									0
Lyon	M																									0
	F																									0
Mineral	M																									0
	F																									0
Nye	M																									0
	F																									0
Pershing	M																									0
	F																									0
Storey	M																									0
	F																									0
Washoe	M																									0
	F																									0
White Pine	M																									0
	F																									0
Unknown	M																									0
County*	F																									0
Total		0	0	0	0	0	0	0	0	0	0	0	0	0	0	0	0	0	1	0	0	0	0	0	1	

Nevada -- Division Of Investigations Arrests for Narcotics Violations

AUGUST 2003

		10-	13-												25-	30-	35-	40-	45-	50-	55-	60-		Total	W	B	A	I																					
		<10	12	14	15	16	17	18	19	20	21	22	23	24	29	34	39	44	49	54	59	64	>64																										
SALES/MANUFACTURING VIOLATIONS																																																	
Opium or cocaine and their derivatives (morphine, heroin, codeine)	M																							1			1																						
	F																																																
Marijuana	M											1										1						2																					
	F																																																
Synthetic narcotics- Manufactured narcotics that can cause true drug addiction (demerol, meth)	M															1	1	2					1						5																				
	F																																																
Other dangerous, non-narcotic, drugs (barbituates, benzderine)	M																																																
	F																																																
Sub-Total	M	0	0	0	0	0	0	0	0	0	0	1	0	0	0	1	1	2	2	0	0	1	0	8	8	0	0	0																					
	F	0	0	0	0	0	0	0	0	0	0	0	0	0	0	0	0	0	0	0	0	0	0	0	0	0	0	0																					
POSSESSION VIOLATIONS																																																	
Opium or cocaine and their derivatives (morphine, heroin, codeine)	M														1											1																							
	F												1											1																									
Marijuana	M											1										1						1																					
	F																	1					1						1																				
Synthetic narcotics- Manufactured narcotics that can cause true drug addiction (demerol, meth)	M															1	1	1	1	3					1						9																		
	F																	1	1	1	1	3					1						3																
Other dangerous, non-narcotic, drugs (barbituates, benzderine)	M																																																
	F																																																
Sub-Total	M	0	0	0	0	0	0	0	0	0	1	1	0	2	1	1	3	0	0	1	0	1	0	11	11	0	0	0																					
	F	0	0	0	0	0	0	0	0	0	1	0	0	0	0	2	1	1	0	0	0	0	5	5	0	0	0																						
Total		0	0	0	0	0	0	0	0	0	1	3	0	2	1	2	6	3	3	1	0	2	0	24	24	0	0	0																					

Nevada UCR
*Footnotes / Exceptions

AUGUST 2003

Table 1

--Nevada figures are annualized projections.

--"Assault" does not include simple assaults to allow direct comparison between the Nevada rate and the National rate for this Index offense. See Table 8 for a count of all assaults.

Table 2

--The LV Fire Department reports "Arson" offenses for the City of Las Vegas. The population figure for this agency represents jurisdiction and is not added to the county total. Similarly, the School District Police Departments in Clark and Washoe Counties are not added to county population estimates as they represent persons served (student enrollment plus staff.)

--Assault data in this table includes ALL assaults (aggravated and simple) reported for the current month.

--County crime rates are calculated following subtraction of populations of jurisdictions failing to report.

Table 3

-- In the "Nevada vs National Index Crime and Clearance Rates" sections, the "Assaults" numbers do not include simple assaults following FBI guidelines. Therefore, they may be compared directly to National rates.

-- National crime rate figures are the latest available for comparative use (2000). Nevada figures are annualized projections.

Table 13

--At various times, property values recovered will exceed values stolen for the current reporting period.

General Notes:

- The following agency(ies) was unable to submit reports for this month: Henderson Police Department.

-- Any late reports not submitted in time for this publication will be incorporated in to the year-to-date totals in subsequent reports.