

**Disclaimer: The following information is preliminary and cannot be certified until it is published in the annual report, Crime and Justice in Nevada that will be available after July 1, 2003.**

**UNIFORM CRIME REPORTING PROGRAM**  
**UCR STATISTICAL DATA VERIFICATION FORM**

As an agency administrator or designee for the \_\_\_\_\_, I have  
(Name of Agency)  
reviewed the UCR monthly statistics for **September 2002** which includes all UCR data  
submitted year to date. Based upon my or my designee's review and validation of same, I find  
that:

All data contained in the report for my agency is accurate and complete and may be  
released and made part of UCR publications for future distribution to the public and other  
interested UCR data subscribers.

Data contained in the report is inaccurate or incomplete and may not be published or  
released at this time. (If this choice is selected, please provide the reason in the space  
provided below.)

Reason: \_\_\_\_\_  
\_\_\_\_\_  
\_\_\_\_\_

**The corrected data will be supplied to the UCR Program by: \_\_\_\_\_.**  
**(Date)**

This document must be signed and mailed to the Uniform Crime Reporting Program, 808 W.  
Nye Lane, Carson City, Nevada 89703 or faxed to (775) 687-1843 by **May 30, 2003**.

\_\_\_\_\_  
**Signature of Agency Administrator (or designee)**

\_\_\_\_\_  
**Name/Title of Agency Administrator (print or type)**

\_\_\_\_\_  
**Agency's Name/Location**

\_\_\_\_\_  
**Date**

Department of Public Safety  
Nevada Highway Patrol  
Records and Identification Bureau

# Monthly Report



**SEPTEMBER**

**2002**

**Richard Kirkland, Director  
Department of Public Safety**

**Colonel David Hosmer, Chief  
Nevada Highway Patrol**

**Daryl Riersgard, Manager  
Records and Identification Bureau**

**Tenna Herman, Management Analyst I**

**Prepared by:  
Records and Identification Bureau  
Uniform Crime Reporting  
808 W. Nye Lane  
Carson City, Nevada 89703  
(775) 687-1600**

# Nevada UCR Definitions / Explanations

---

## Uniform Crime Reporting Program

The UCR program is a nationwide, cooperative, statistical effort by over 17,000 city, county and state law enforcement agencies that voluntarily report data on crimes brought to their attention. Law enforcement agencies active in the national program represent 95% of the total population of the United States. While the program's primary objective is to generate a reliable set of crime statistics for use in law enforcement administration, operation and management, its data has over the years become one of the country's leading social indicators.

In Nevada, 36 agencies are currently reporting UCR data to the statewide program representing nearly 99% of its population. Rather than submitting directly to the FBI, local agencies must submit crime data to the state UCR Repository, which compiles, analyzes and submits copies of the reports to the FBI. The Nevada UCR Program prides itself on its responsiveness to local contributing agencies that previously received limited feedback for their efforts. The Nevada program is also responsible for producing and distributing periodic reports of the information contained in its database. As its database has grown, the program's utility has become even more apparent.

Eight offenses serve as an index for gauging fluctuations in overall volumes and rates of crime. Known collectively as the " Crime Index, " these offenses include *the violent crimes of murder, rape, robbery and assault and the property crimes of burglary, larceny, motor vehicle theft and arson*. These offenses were selected as a grouped measuring device because they represent the most common crime problems. They are all serious crimes; either by their very nature or due to the volume and frequency with which they occur.

## Index Crimes Definitions

### Murder and Non-negligent Manslaughter

Murder and non negligent manslaughter, as defined in the Uniform Crime Reporting Program, is the willful (non-negligent) killing of a human being by another.

The classification of this offense, as for all other Crime Index offenses, is based solely on police investigation as opposed to the determination of a court, medical examiner, coroner, jury or other judicial entity. Not included in the count for this offense classification are deaths caused by negligence, suicide or accident, justifiable homicides and attempts to murder or assaults to murder. These are scored as aggravated assaults.

# Nevada UCR Definitions / Explanations

---

## **Forcible Rape**

Forcible rape, as defined in the program, is the carnal knowledge of a female forcibly and against her will. Assaults or attempts to commit rape by force or threat of force are also included; however, statutory rape (without force) and other sex offenses are excluded.

## **Robbery**

Robbery is the taking or attempting to take anything of value from the care, custody or control of a person or persons by force or threat of force or violence and/or by putting the victim in fear.

## **Aggravated Assault**

Aggravated assault is an unlawful attack by one person upon another for the purpose of inflicting severe or aggravated bodily injury. This type of assault is usually accompanied by the use of a weapon or by means likely to produce death or great bodily harm. Attempts are included since it is not necessary that an injury result when a gun, knife or other weapon is used which could and probably would result in serious personal injury if the crime were successfully completed

## **Burglary**

The Uniform Crime Reporting Program defines burglary as the unlawful entry of a structure to commit a felony or theft. The use of force to gain entry is not required to classify an offense as burglary. Burglary in this program is categorized into three sub classifications: forcible entry, unlawful entry where no force is used and attempted forcible entry.

## **Larceny-Theft**

Larceny-theft is the unlawful taking, carrying, leading, or riding away of property from the possession or constructive possession of another. It includes crimes such as shoplifting, pocket picking, purse-snatching, thefts from motor vehicles, thefts of motor vehicle parts and accessories, and bicycle thefts, etc., in which no use of force, violence, or fraud occurs. In the UCR Program, this crime category does not include embezzlement, "con" games, forgery, and worthless checks. Motor vehicle theft is also excluded from this category inasmuch as it is a separate Crime Index offense.

## **Motor Vehicle Theft**

Defined as the theft or attempted theft of a motor vehicle, this offense category includes the stealing of automobiles, trucks, buses, motorcycles, motor scooters, snowmobiles, etc. The definition excludes the taking of a motor vehicle for temporary use by those persons having lawful access.

# Nevada UCR

## Definitions / Explanations

---

### Arson

Arson is defined by the Uniform Crime Reporting Program as any willful or malicious burning or attempt to burn, with or without intent to defraud, a dwelling house, public building, a motor vehicle or aircraft, personal property of another, etc. Only fires determined through investigation to have been willfully or maliciously set are classified as arsons. Fires of suspicious or unknown origins are excluded.

### Population Estimates

State, county and incorporated city population estimates are prepared and reviewed prior to the end of each calendar year for certification by the governor by March 1. The Nevada Department of Taxation and Nevada State Demographer, Bureau of Business and Economic Research, College of Business Administration, University of Nevada, Reno, prepares these estimates.

### Crime Rates

Crime rates involve the number of Index Crimes per unit of population, usually per 100,000 persons. Because Nevada has such a low population, a rate per 1,000 persons is used to reflect a more realistic volume. No attempt is made to incorporate transient populations or other factors that contribute to the ratio and types of crime in given areas. Any effort to make comparisons of crime rates between areas should be tempered by these population and environmental variables.

Crime rates are one of the most meaningful statistical elements. Computation of crime rates per 1,000 population is achieved by dividing the community's population by 1,000, then dividing the number of offenses in each class by that number. The answer is the number of offenses per 1,000 population and is the crime rate for that particular offense. In Table 2, the County Total Crime Rate is computed after subtracting the population figure for all non-reporting agencies for the current month.

The index offense "Aggravated Assault" is an item of special interest to users of Nevada's UCR report. In Tables 1 & 3, where Nevada and National crime rates are compared, "simple assaults" are subtracted from the total of all assaults following FBI UCR rules, thus allowing for direct comparison. However, total assaults (simple and aggravated) are also presented in the Nevada report. This is because the Nevada UCR staff believes this figure is an important indicator of risk for citizens and it presents a more balanced picture of this portion of the crime index to law enforcement personnel.

The Federal Bureau of Investigation, Uniform Crime Reporting Section, publishes national rates.

### Clearance Rates

The percentage of crimes cleared is obtained by dividing the number of offenses cleared by the number of offenses known. This number is then multiplied by 100.

## Nevada--Statewide Summary--UCR Index Crimes

### SEPTEMBER 2002

Offense	Crimes this Month	# Cleared this Month	% Cleared this Month	Crimes this YTD	# Cleared this YTD	% Cleared this YTD	September Crimes 2001	September Cleared 2001	% Cleared 2001	NV Rate / 1,000 (Proj) *	2001 NV Rate / 1,000	2000 Ntl. Rate / 1,000
<b>Murder</b>	16	10	63	143	84	59	22	10	45	0.09	0.07	0.55
<b>Rape</b>	87	27	31	679	256	38	87	26	30	0.43	0.44	0.32
<b>Robbery</b>	456	100	22	3,658	770	21	410	71	17	2.39	2.31	1.45
<b>Assault *</b>	694	335	48	5,843	2,881	49	372	182	49	3.07	2.51	3.24
<b>Burglary</b>	1,668	326	20	14,131	3,322	24	1,524	398	26	8.57	8.91	7.28
<b>Larceny</b>	4,185	907	22	35,380	8,914	25	3,737	1,046	28	21.81	22.43	24.75
<b>MV Theft</b>	1,610	230	14	12,649	1,893	15	1,139	122	11	7.11	6.69	4.14
<b>Arson</b>	54	3	6	459	68	15	47	10	21	0.26	0.30	0.37
<b>Total</b>	8,770	1,938	22	72,942	18,188	25	7,338	1,865	25	43.72	43.65	42.10

\* The projected Crime Rate for Assaults is computed after subtracting Simple Assaults from the total for all Assaults following FBI guidelines. Therefore, this rate may be compared directly to the National Rate. See Table 3 and the "Footnotes/Exceptions page for further information.

# Nevada UCR - - Monthly Crime/ Clearance Summary - - All Crimes

Contributing Agency	Est. Pop	Murder		Rape		Robbery		Assault		Burglary		Larceny		MV Theft		Arson		Total Crimes	Crime Rate	Clearances	Clearance Rate	
<b>September 2002</b>																						
<b>Carson County</b>																						
Carson SO	54,171	0	0	0	0	2	0	78	40	33	7	116	18	10	1	1	0	240	4.43	66	27.5%	
<b>County Total</b>	54,171	0	0	0	0	2	0	78	40	33	7	116	18	10	1	1	0	240	4.43	66	27.5%	
<b>Churchill County</b>																						
Churchill SO	16,766	0	0	1	1	0	0	28	18	3	2	11	0	1	1	1	0	45	2.68	22	48.9%	
Fallon PD	8,162	0	0	0	0	0	1	20	11	5	1	33	3	5	3	0	0	63	7.72	19	30.2%	
<b>County Total</b>	24,928	0	0	1	1	0	1	48	29	8	3	44	3	6	4	1	0	108	4.33	41	38.0%	
<b>Clark County</b>																						
Boulder PD	14,760	0	0	0	0	0	0	4	2	8	2	16	2	7	5	0	0	35	2.37	11	31.4%	
Clark Co. Schools PD*	267,697	0	0	0	0	1	0	82	56	14	2	69	3	4	0	1	0	171	0.64	61	35.7%	
Henderson	196,780	0	0	10	5	14	7	198	144	135	13	230	39	110	7	4	1	701	3.56	216	30.8%	
LV Metro PD	1,134,478	12	9	55	7	362	77	2,382	1,014	999	209	2,223	522	1,138	166	12	0	7,183	6.33	2,004	27.9%	
LV Fire Dept*	506,111															8	0	8	0.02	0	0.0%	
Mesquite	11,940	0	0	0	0	0	0	27	18	3	2	14	8	3	3	0	0	47	3.94	31	66.0%	
North Las Vegas PD	127,897	3	1	5	2	36	3	211	132	132	14	266	49	153	11	7	0	813	6.36	212	26.1%	
UNLV PD*	24,500	0	0	0	0	0	0	0	0	12	0	52	1	15	1	0	0	79	3.22	2	2.5%	
<b>County Total</b>	1,485,855	15	10	70	14	413	87	2,904	1,366	1,303	242	2,870	624	1,430	193	32	1	9,037	6.08	2,537	28.1%	
<b>Douglas County</b>																						
Douglas SO	43,450	0	0	0	0	2	1	29	21	15	2	54	14	2	2	1	0	103	2.37	40	38.8%	
<b>County Total</b>	43,450	0	0	0	0	2	1	29	21	15	2	54	14	2	2	1	0	103	2.37	40	38.8%	

\*Population figure not included in county total  
Table 2

## Nevada UCR - - Monthly Crime/ Clearance Summary - - All Crimes

Contributing Agency	Est. Pop	Murder		Rape		Robbery		Assault		Burglary		Larceny		MV Theft		Arson		Total Crimes	Crime Rate	Clearances	Clearance Rate
<b>September 2002</b>																					
<b>Elko County</b>																					
Elko SO	22,795	0	0	0	0	0	0	12	8	11	1	14	2	1	1	0	0	38	1.67	12	31.6%
Carlin PD	2,166	0	0	0	0	0	0	3	3	1	0	3	0	0	0	0	0	7	3.23	3	42.9%
Elko PD	17,093	0	0	1	1	0	0	24	15	13	4	31	6	1	0	1	0	71	4.15	26	36.6%
Wendover PD	4,614	0	0	0	0	0	0	6	5	4	1	10	2	0	0	0	0	20	4.33	8	40.0%
<b>County Total</b>	<b>46,668</b>	<b>0</b>	<b>0</b>	<b>1</b>	<b>1</b>	<b>0</b>	<b>0</b>	<b>45</b>	<b>31</b>	<b>29</b>	<b>6</b>	<b>58</b>	<b>10</b>	<b>2</b>	<b>1</b>	<b>1</b>	<b>0</b>	<b>136</b>	<b>2.91</b>	<b>49</b>	<b>36.0%</b>
<b>Esmeralda County</b>																					
Esmeralda SO	1,038	0	0	0	0	0	0	0	0	0	0	0	0	1	1	0	0	1	0.96	1	100.0%
<b>County Total</b>	<b>1,038</b>	<b>0</b>	<b>0</b>	<b>0</b>	<b>0</b>	<b>0</b>	<b>0</b>	<b>0</b>	<b>0</b>	<b>0</b>	<b>0</b>	<b>0</b>	<b>0</b>	<b>1</b>	<b>1</b>	<b>0</b>	<b>0</b>	<b>1</b>	<b>0.96</b>	<b>1</b>	<b>100.0%</b>
<b>Eureka County</b>																					
Eureka SO	1,506	0	0	0	0	0	0	0	0	1	0	1	1	0	0	0	0	2	1.33	1	50.0%
<b>County Total</b>	<b>1,506</b>	<b>0</b>	<b>0</b>	<b>0</b>	<b>0</b>	<b>0</b>	<b>0</b>	<b>0</b>	<b>0</b>	<b>1</b>	<b>0</b>	<b>1</b>	<b>1</b>	<b>0</b>	<b>0</b>	<b>0</b>	<b>0</b>	<b>2</b>	<b>1.33</b>	<b>1</b>	<b>50.0%</b>
<b>Humboldt County</b>																					
Humboldt SO	9,163	0	0	0	0	0	0	6	4	4	2	5	0	3	3	0	0	18	1.96	9	50.0%
Winnemucca PD	7,001	0	0	1	1	0	0	7	5	8	4	18	6	1	1	1	1	36	5.14	18	50.0%
<b>County Total</b>	<b>16,164</b>	<b>0</b>	<b>0</b>	<b>1</b>	<b>1</b>	<b>0</b>	<b>0</b>	<b>13</b>	<b>9</b>	<b>12</b>	<b>6</b>	<b>23</b>	<b>6</b>	<b>4</b>	<b>4</b>	<b>1</b>	<b>1</b>	<b>54</b>	<b>3.34</b>	<b>27</b>	<b>50.0%</b>

\*Population figure not included in county total  
Table 2

# Nevada UCR - - Monthly Crime/ Clearance Summary - - All Crimes

Contributing Agency	Est. Pop	Murder	Rape	Robbery	Assault	Burglary	Larceny	MV Theft	Arson	Total Crimes	Crime Rate	Clearances	Clearance Rate
										<b>September 2002</b>			
<b>Lander County</b>													
Lander SO	5,761	0 0	0 0	0 0	2 1	1 0	3 0	1 1	0 0	7	1.22	2	28.6%
County Total	5,761	0 0	0 0	0 0	2 1	1 0	3 0	1 1	0 0	7	1.22	2	28.6%
<b>Lincoln County</b>													
Lincoln SO	3,861	0 0	0 0	0 0	2 1	3 1	4 0	0 0	0 0	9	2.33	2	22.2%
County Total	3,861	0 0	0 0	0 0	2 1	3 1	4 0	0 0	0 0	9	2.33	2	22.2%
<b>Lyon County</b>													
Lyon SO	34,440	0 0	1 0	0 0	36 34	8 1	33 3	6 2	0 0	84	2.44	40	47.6%
Yerington PD	2,889	0 0	0 0	0 0	1 0	2 0	1 1	0 0	0 0	4	1.38	1	25.0%
County Total	37,329	0 0	1 0	0 0	37 34	10 1	34 4	6 2	0 0	88	2.36	41	46.6%
<b>Mineral County</b>													
Mineral SO	4,743	0 0	0 0	0 0	2 2	1 1	1 0	1 1	0 0	5	1.05	4	80.0%
County Total	4,743	0 0	0 0	0 0	2 2	1 1	1 0	1 1	0 0	5	1.05	4	80.0%
<b>Nye County</b>													
Nye SO	34,384	0 0	0 0	0 0	52 53	28 16	53 29	5 4	2 0	140	4.07	102	72.9%
County Total	34,384	0 0	0 0	0 0	52 53	28 16	53 29	5 4	2 0	140	4.07	102	72.9%

\*Population figure not included in county total  
Table 2

# Nevada UCR - - Monthly Crime/ Clearance Summary - - All Crimes

Contributing Agency	Est. Pop	Murder	Rape	Robbery	Assault	Burglary	Larceny	MV Theft	Arson	Total Crimes	Crime Rate	Clearances	Clearance Rate
										<b>September 2002</b>			
<b>Pershing County</b>													
Pershing SO	4,729	0 0	1 0	0 0	3 1	4 0	9 1	0 0	0 0	17	3.59	2	11.8%
Lovelock PD	2,144	0 0	0 0	0 0	6 6	4 0	8 8	0 0	0 0	18	8.40	14	77.8%
<b>County Total</b>	<b>6,873</b>	<b>0 0</b>	<b>1 0</b>	<b>0 0</b>	<b>9 7</b>	<b>8 0</b>	<b>17 9</b>	<b>0 0</b>	<b>0 0</b>	<b>35</b>	<b>5.09</b>	<b>16</b>	<b>45.7%</b>
<b>Storey County</b>													
Storey	3,714	0 0	0 0	0 0	7 2	1 0	4 0	0 0	0 0	12	3.23	2	16.7%
<b>County Total</b>	<b>3,714</b>	<b>0 0</b>	<b>0 0</b>	<b>0 0</b>	<b>7 2</b>	<b>1 0</b>	<b>4 0</b>	<b>0 0</b>	<b>0 0</b>	<b>12</b>	<b>3.23</b>	<b>2</b>	<b>16.7%</b>
<b>Washoe County</b>													
Washoe SO	94,634	0 0	0 0	2 1	84 55	38 2	75 13	11 2	1 0	211	2.23	73	34.6%
Reno PD	186,883	1 0	6 1	34 9	369 166	96 13	608 117	99 8	12 1	1,225	6.55	315	25.7%
Sparks PD	71,753	0 0	5 9	3 1	106 101	65 26	167 57	31 6	0 0	377	5.25	200	53.1%
UNR PD*	15,000	0 0	1 0	0 0	1 1	6 0	22 0	1 0	0 0	31	2.07	1	3.2%
Washoe Co Schl PD*	57,592	0 0	0 0	0 0	2 2	5 0	21 1	0 0	1 0	29	0.50	3	10.3%
TMCC PD*	12,311	0 0	0 0	0 0	0 0	2 0	2 0	0 0	0 0	4	0.32	0	0.0%
<b>County Total</b>	<b>353,270</b>	<b>1 0</b>	<b>12 10</b>	<b>39 11</b>	<b>562 325</b>	<b>212 41</b>	<b>895 188</b>	<b>142 16</b>	<b>14 1</b>	<b>1,877</b>	<b>5.31</b>	<b>592</b>	<b>31.5%</b>
<b>White Pine County</b>													
White Pine SO	8,783	0 0	0 0	0 0	14 10	3 0	8 1	0 0	1 0	26	2.96	11	42.3%
<b>County Total</b>	<b>8,783</b>	<b>0 0</b>	<b>0 0</b>	<b>0 0</b>	<b>14 10</b>	<b>3 0</b>	<b>8 1</b>	<b>0 0</b>	<b>1 0</b>	<b>26</b>	<b>2.96</b>	<b>11</b>	<b>42.3%</b>
<b>Grand Total</b>	<b>2,132,498</b>	<b>16 10</b>	<b>87 27</b>	<b>456 100</b>	<b>3,804 1,931</b>	<b>1,668 326</b>	<b>4,185 907</b>	<b>1,610 230</b>	<b>54 3</b>	<b>11,880</b>	<b>5.57</b>	<b>3,534</b>	<b>29.7%</b>

\*Population figure not included in county total  
Table 2

# Nevada UCR - - Monthly Crimes/Clearances Summary - - Index Crimes

**SEPTEMBER 2002**

	Est. Pop	Murder		Rape		Robbery		Assault		Burglary		Larceny		MV Theft		Arson		Total Crimes	Crime Rate	Total Clear	Clearance Rate
<b>Statewide Totals</b>																					
<b>(Crimes/Clearances)</b>	2,132,498	16	10	87	27	456	100	694	335	1668	326	4185	907	1610	230	54	3	8770	4.11	1938	22.10

## Nevada (Projected 2002) vs National (2000) Index Crime Rates

*(per 1,000 population)*

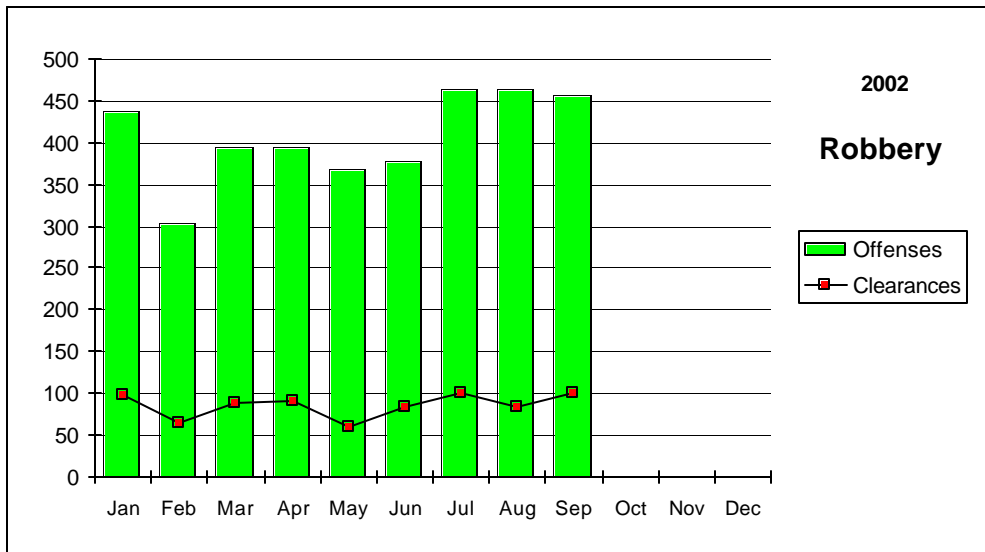
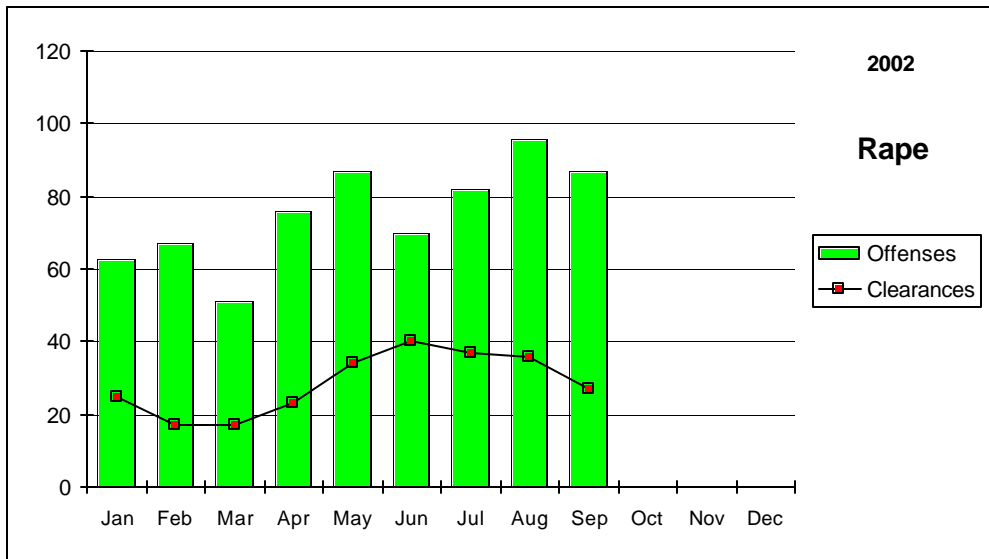
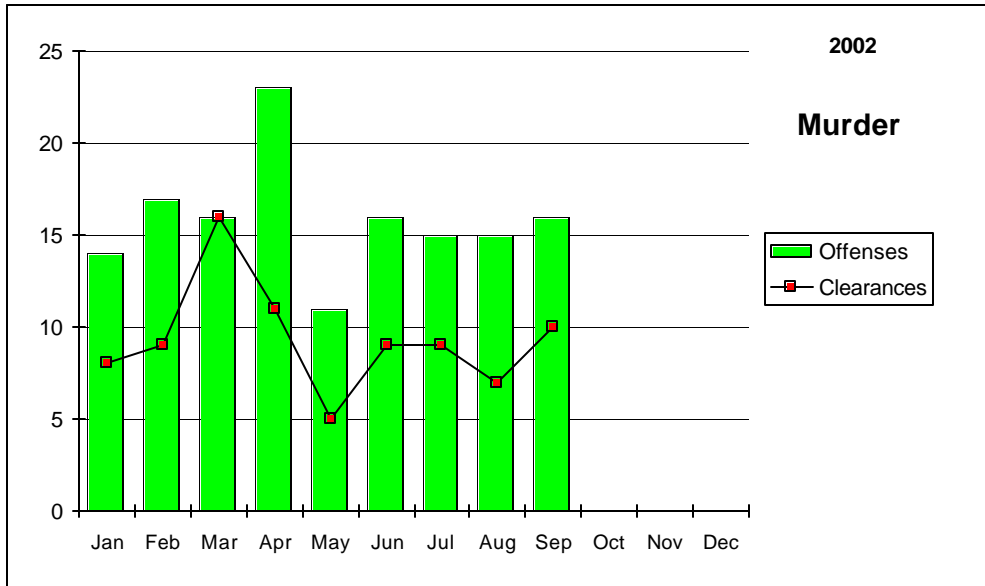
	Murder	Rape	Robbery	Assault	Burglary	Larceny	MV Theft	Arson	Crime Rate
<b>Nevada</b>	0.09	0.42	2.29	3.65	8.84	22.12	7.91	0.29	45.61
<b>National</b>	0.55	0.32	1.45	3.24	7.28	24.75	4.14	0.37	42.10

## Nevada (Projected 2002) vs National (2000) Crime Clearance Rates

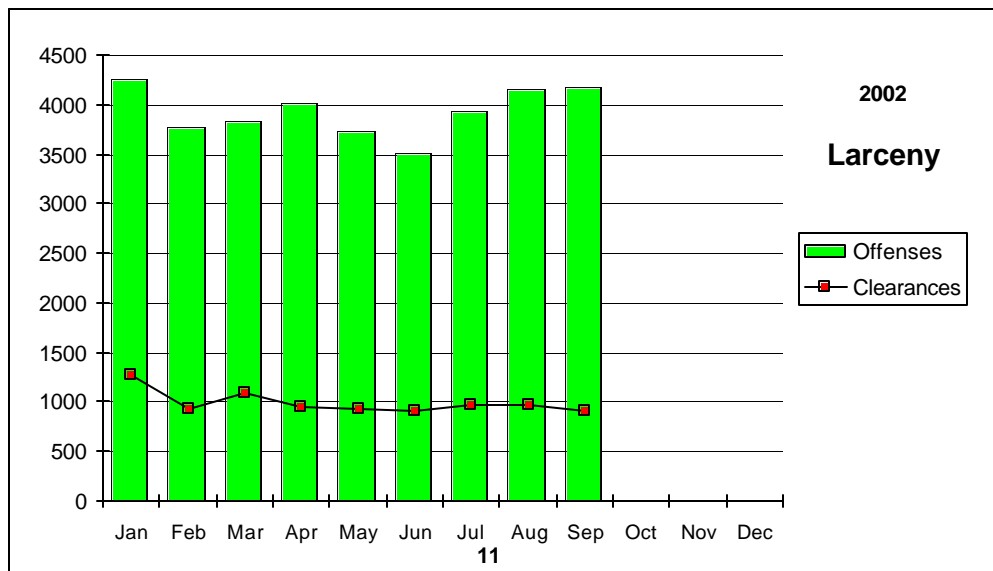
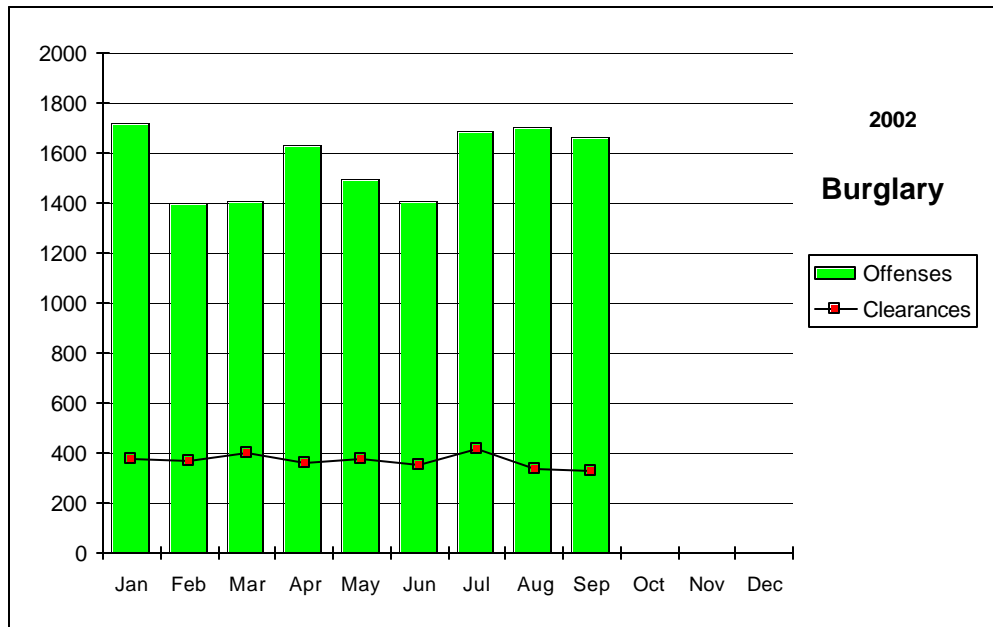
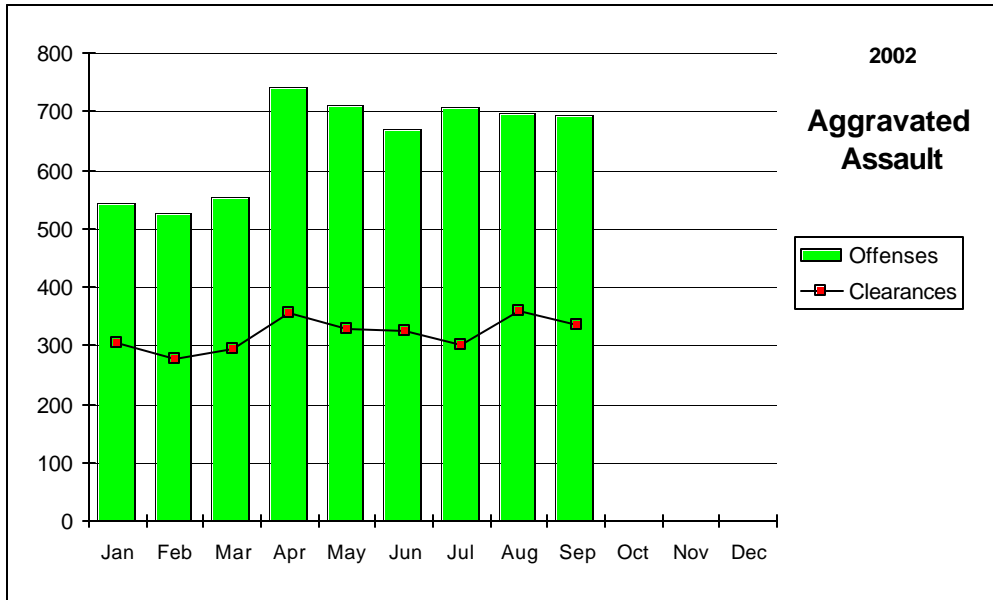
*(by Percent)*

	Murder	Rape	Robbery	Assault	Burglary	Larceny	MV Theft	Arson	Clear Rate
<b>Nevada</b>	58.74	37.70	21.05	49.31	23.51	25.20	14.97	14.81	25.32
<b>National</b>	63.10	46.90	25.70	56.90	13.40	18.20	14.10	16.00	20.50

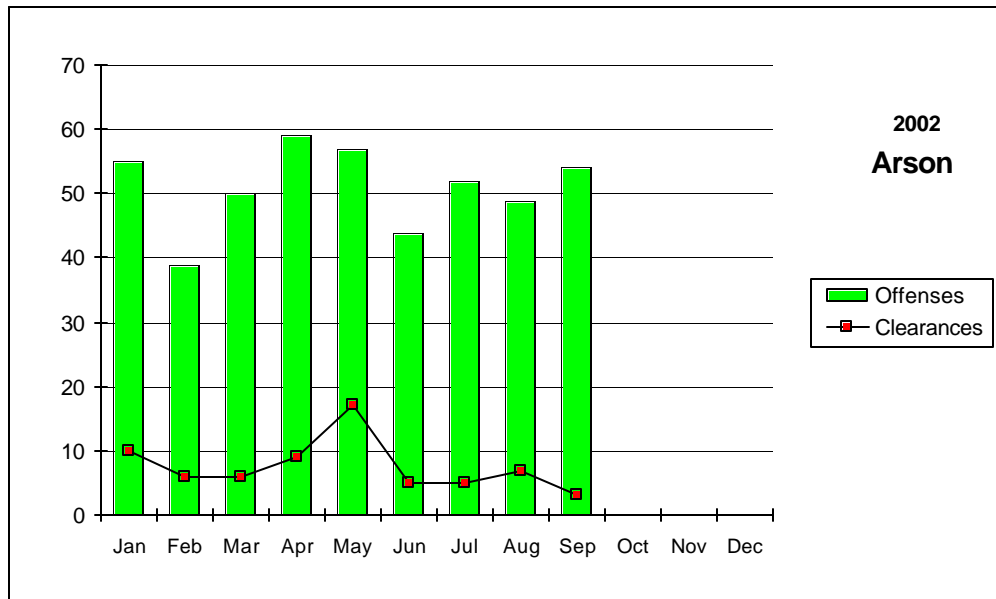
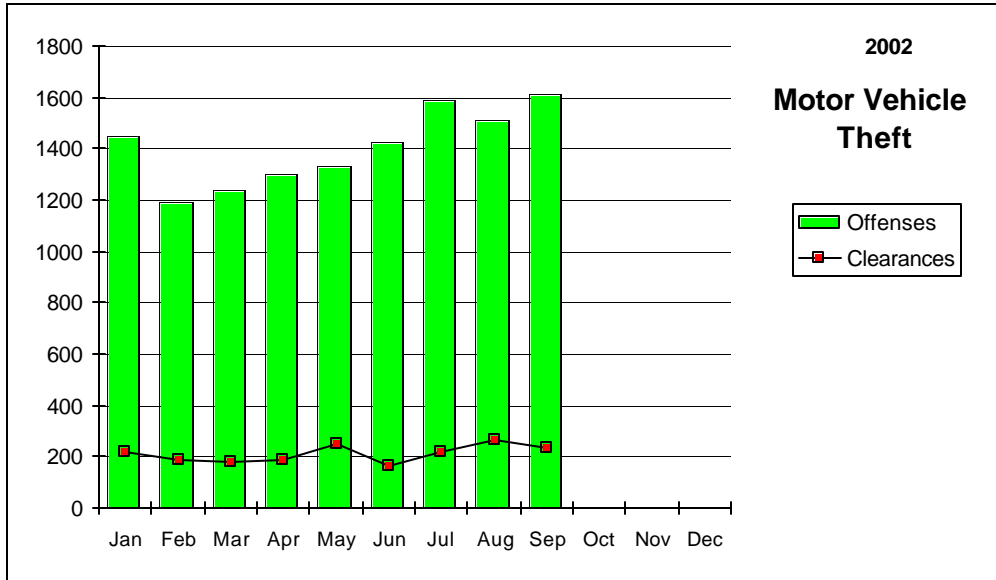
# Nevada--Graphic Summary--UCR



# Nevada--Graphic Summary--UCR



# Nevada--Graphic Summary--UCR



## Nevada--Murder--Incidence Level Variation--UCR

### September 2002

Agency	September 2002 Offenses	September 2002 Cleared	YTD Offenses	2002 YTD Cleared	September 2001 Offenses	September 2001 Cleared	YTD Offenses	2001 YTD Cleared
Boulder	0	0	0	0	0	0	0	0
Carlin PD	0	0	0	0	0	0	0	0
Carson SO	0	0	0	0	0	0	0	0
Churchill SO	0	0	0	0	0	0	-1	0
Clark Co Schl PD	0	0	0	0	0	0	0	0
Douglas SO	0	0	1	1	0	0	0	0
Elko PD	0	0	0	0	0	0	0	0
Elko SO	0	0	1	1	1	1	2	1
Esmeralda SO	0	0	0	0	0	0	0	0
Eureka SO	0	0	0	0	0	0	0	0
Fallon PD	0	0	0	0	0	0	0	0
Henderson PD	0	0	2	3	2	2	9	6
Humboldt SO	0	0	0	0	0	0	0	0
Lander SO	0	0	0	0	0	0	0	0
Lincoln SO	0	0	0	0	0	0	0	0
Lovelock PD	0	0	0	0	0	0	0	0
LV Fire Dept	0	0	0	0	0	0	0	0
LV Metro	12	9	107	60	10	4	109	73
Lyon SO	0	0	0	0	0	0	1	1
Mesquite PD	0	0	0	0	0	0	0	0
Mineral SO	0	0	1	1	0	0	1	1
NLVPD	3	1	17	4	1	0	20	6
Nye SO	0	0	2	1	0	0	1	1
Pershing SO	0	0	0	0	0	0	1	1
Reno PD	1	0	8	7	0	0	6	5
Sparks PD	0	0	2	5	0	0	1	1
Storey SO	0	0	0	0	0	0	0	0
TMCC PD	0	0	0	0	0	0	0	0
UNLV PD	0	0	0	0	0	0	0	0
UNR PD	0	0	0	0	0	0	0	0
Washoe SO	0	0	1	0	0	0	2	1
Washoe Co Schl PD	0	0	0	0	0	0	0	0
Wendover PD	0	0	1	1	0	0	0	0
White Pine SO	0	0	0	0	0	0	0	0
Winnemucca PD	0	0	0	0	0	0	1	1
Yerington PD	0	0	0	0	0	0	0	0
<b>TOTALS</b>	<b>16</b>	<b>10</b>	<b>143</b>	<b>84</b>	<b>14</b>	<b>7</b>	<b>153</b>	<b>98</b>

## Nevada--Rape--Incidence Level Variation--UCR

### September 2002

Agency	September 2002 Offenses	September 2002 Cleared	YTD Offenses	2002 YTD Cleared	September 2001 Offenses	September 2001 Cleared	YTD Offenses	2001 YTD Cleared
Boulder	0	0	0	0	0	0	4	4
Carlin PD	0	0	0	0	0	0	0	0
Carson SO	0	0	29	6	1	0	27	3
Churchill SO	1	1	13	11	3	3	21	13
Clark Co Schl PD	0	0	0	0	0	0	0	0
Douglas SO	0	0	0	0	0	0	0	0
Elko PD	1	1	3	3	0	1	3	1
Elko SO	0	0	4	0	0	0	3	1
Esmeralda SO	0	0	0	0	0	0	0	0
Eureka SO	0	0	0	0	0	0	0	0
Fallon PD	0	0	1	1	0	0	0	0
Henderson PD	10	5	79	27	12	6	78	37
Humboldt SO	0	0	0	0	0	0	3	1
Lander SO	0	0	0	0	1	0	3	1
Lincoln SO	0	0	0	0	0	0	0	0
Lovelock PD	0	0	2	1	0	0	1	0
LV Fire Dept	0	0	0	0	0	0	0	0
LV Metro	55	7	350	119	28	6	383	134
Lyon SO	1	0	6	1	2	0	9	3
Mesquite PD	0	0	0	0	0	0	0	0
Mineral SO	0	0	1	1	0	0	3	3
NLVPD	5	2	35	18	6	2	39	21
Nye SO	0	0	0	0	0	0	0	0
Pershing SO	1	0	3	1	0	0	2	1
Reno PD	6	1	96	13	2	2	91	21
Sparks PD	5	9	42	46	3	4	37	26
Storey SO	0	0	1	1	0	0	0	0
TMCC PD	0	0	0	0	0	0	0	0
UNLV PD	0	0	2	0	1	1	2	2
UNR PD	1	0	1	0	0	0	0	0
Washoe SO	0	0	6	2	2	1	26	11
Washoe Co Schl PD	0	0	0	0	0	0	0	0
Wendover PD	0	0	2	2	0	0	1	1
White Pine SO	0	0	1	1	0	0	1	1
Winnemucca PD	1	1	2	2	1	1	5	3
Yerington PD	0	0	0	0	0	0	0	0
<b>TOTALS</b>	<b>87</b>	<b>27</b>	<b>679</b>	<b>256</b>	<b>62</b>	<b>27</b>	<b>742</b>	<b>288</b>

## Nevada--Robbery--Incidence Level Variation--UCR

### September 2002

Agency	September 2002 Offenses	September 2002 Cleared	YTD Offenses	2002 YTD Cleared	September 2001 Offenses	September 2001 Cleared	YTD Offenses	2001 YTD Cleared
Boulder	0	0	2	1	0	0	3	3
Carlin PD	0	0	0	0	0	0	1	1
Carson SO	2	0	21	10	1	0	24	10
Churchill SO	0	0	1	0	0	0	0	0
Clark Co Schl PD	1	0	13	5	4	1	15	4
Douglas SO	2	1	8	5	2	0	8	4
Elko PD	0	0	5	0	4	0	6	0
Elko SO	0	0	3	2	0	0	1	1
Esmeralda SO	0	0	0	0	0	0	0	0
Eureka SO	0	0	0	0	0	0	0	0
Fallon PD	0	1	4	1	0	0	2	1
Henderson PD	14	7	136	32	17	0	149	33
Humboldt SO	0	0	0	0	0	0	0	0
Lander SO	0	0	1	0	0	0	0	0
Lincoln SO	0	0	1	0	0	0	0	0
Lovelock PD	0	0	0	0	0	0	0	0
LV Fire Dept	0	0	0	0	0	0	0	0
LV Metro	362	77	2694	519	276	55	2539	412
Lyon SO	0	0	1	0	0	0	4	0
Mesquite PD	0	0	1	1	1	2	5	4
Mineral SO	0	0	1	1	0	0	0	0
NLVPD	36	3	342	60	37	7	294	55
Nye SO	0	0	13	7	0	0	3	3
Pershing SO	0	0	1	0	0	0	0	0
Reno PD	34	9	318	86	37	8	278	75
Sparks PD	3	1	73	34	8	4	61	27
Storey SO	0	0	0	0	0	0	0	0
TMCC PD	0	0	0	0	0	0	0	0
UNLV PD	0	0	4	1	0	0	4	2
UNR PD	0	0	0	0	0	0	0	0
Washoe SO	2	1	10	4	0	0	15	7
Washoe Co Schl PD	0	0	1	0	0	0	0	0
Wendover PD	0	0	1	0	1	1	2	2
White Pine SO	0	0	2	1	0	0	0	0
Winnemucca PD	0	0	1	0	0	0	0	0
Yerington PD	0	0	0	0	0	0	0	0
<b>TOTALS</b>	<b>456</b>	<b>100</b>	<b>3658</b>	<b>770</b>	<b>388</b>	<b>78</b>	<b>3414</b>	<b>644</b>

# Nevada--Aggravated Assault--Incidence Level Variation--UCR

## September 2002

Agency	September	September	2002 YTD		September	September	2001 YTD	
	2002 Offenses	2002 Cleared	Offenses	Cleared	2001 Offenses	2001 Cleared	Offenses	Cleared
Boulder	0	0	43	31	4	0	44	30
Carlin PD	3	3	8	6	1	0	5	2
Carson SO	25	13	149	70	27	15	174	91
Churchill SO	7	3	30	25	7	3	25	15
Clark Co SchI PD	3	3	28	21	2	2	28	13
Douglas SO	6	3	34	20	3	1	34	23
Elko PD	4	4	18	9	2	0	22	10
Elko SO	1	1	15	8	1	1	21	5
Esmeralda SO	0	0	1	1	0	0	4	4
Eureka SO	0	0	5	2	3	0	14	7
Fallon PD	2	1	11	7	2	0	10	5
Henderson PD	13	9	109	96	25	23	169	93
Humboldt SO	5	4	43	26	7	4	36	27
Lander SO	0	0	28	16	0	0	25	4
Lincoln SO	1	1	2	1	0	0	6	5
Lovelock PD	0	0	3	2	1	1	9	8
LV Fire Dept	0	0	0	0	0	0	0	0
LV Metro	454	183	3483	1444	322	119	2324	884
Lyon SO	4	4	45	42	7	7	56	54
Mesquite PD	1	1	6	6	1	1	9	7
Mineral SO	0	0	3	3	2	1	8	7
NLVPD	52	30	605	332	99	45	641	311
Nye SO	5	6	82	70	6	1	64	57
Pershing SO	2	1	9	7	3	0	18	3
Reno PD	54	28	730	391	97	45	460	189
Sparks PD	14	19	150	141	18	10	147	105
Storey SO	7	2	25	10	3	2	29	22
TMCC PD	0	0	0	0	0	0	0	0
UNLV PD	0	0	3	2	0	0	4	4
UNR PD	0	0	2	2	0	0	3	0
Washoe SO	19	6	125	50	8	3	105	55
Washoe Co SchI PD	2	2	5	5	1	1	9	10
Wendover PD	2	2	10	8	0	0	5	5
White Pine SO	7	6	19	17	5	5	24	18
Winnemucca PD	0	0	6	6	0	0	7	7
Yerington PD	1	0	8	4	1	0	3	2
<b>TOTALS</b>	<b>694</b>	<b>335</b>	<b>5843</b>	<b>2881</b>	<b>658</b>	<b>290</b>	<b>4542</b>	<b>2082</b>

## Nevada--All Assaults--Incidence Level Variation--UCR

### September 2002

Agency	September	September	2002 YTD		September	September	2001 YTD	
	2002 Offenses	2002 Cleared	2002 YTD Offenses	2002 YTD Cleared	2001 Offenses	2001 Cleared	2001 YTD Offenses	2001 YTD Cleared
Boulder	4	2	130	37	22	0	121	62
Carlin PD	3	3	16	13	1	0	11	7
Carson SO	78	40	683	366	86	38	620	324
Churchill SO	28	18	171	134	28	14	184	134
Clark Co Schl PD	82	56	590	357	46	31	532	260
Douglas SO	29	21	366	289	39	35	367	316
Elko PD	24	15	192	105	23	17	242	166
Elko SO	12	8	78	49	7	4	51	16
Esmeralda SO	0	0	3	3	0	0	5	5
Eureka SO	0	0	10	4	3	0	17	10
Fallon PD	20	11	154	93	22	17	161	100
Henderson PD	198	144	1639	1282	189	144	1734	1216
Humboldt SO	6	4	45	27	7	4	44	30
Lander SO	2	1	45	23	4	3	58	31
Lincoln SO	2	1	18	12	1	1	16	9
Lovelock PD	6	6	48	46	3	5	36	28
LV Fire Dept	0	0	0	0	0	0	0	0
LV Metro	2382	1014	17863	7681	1631	759	15018	6864
Lyon SO	36	34	341	333	36	36	301	292
Mesquite PD	27	18	197	139	16	13	99	93
Mineral SO	2	2	26	26	8	7	45	34
NLVPD	211	132	2106	1252	299	142	2220	1161
Nye SO	52	53	507	462	58	53	470	463
Pershing SO	3	1	23	14	7	3	41	15
Reno PD	369	166	3112	1577	345	172	2667	1256
Sparks PD	106	101	1028	917	123	109	1104	903
Storey SO	7	2	25	10	4	2	32	24
TMCC PD	0	0	2	0	0	0	1	1
UNLV PD	0	0	13	11	5	4	32	26
UNR PD	1	1	9	8	4	0	46	13
Washoe SO	84	55	667	454	62	38	641	440
Washoe Co Schl PD	2	2	181	171	35	35	191	189
Wendover PD	6	5	40	30	2	1	57	50
White Pine SO	14	10	63	51	6	6	64	47
Winnemucca PD	7	5	74	68	9	9	86	85
Yerington PD	1	0	10	5	1	0	3	2
<b>TOTALS</b>	<b>3804</b>	<b>1931</b>	<b>30475</b>	<b>16049</b>	<b>3132</b>	<b>1702</b>	<b>27317</b>	<b>14672</b>

## Nevada--Burglary--Incidence Level Variation--UCR

### September 2002

Agency	September 2002 Offenses	September 2002 Cleared	YTD Offenses	2002 YTD Cleared	September 2001 Offenses	September 2001 Cleared	YTD Offenses	2001 YTD Cleared
Boulder	8	2	59	10	17	5	127	40
Carlin PD	1	0	9	0	1	0	3	1
Carson SO	33	7	300	43	27	4	285	32
Churchill SO	3	2	47	13	7	2	38	11
Clark Co Schl PD	14	2	225	29	20	5	240	38
Douglas SO	15	2	154	33	19	6	147	44
Elko PD	13	4	111	28	12	4	90	23
Elko SO	11	1	95	19	7	2	83	9
Esmeralda SO	0	0	2	1	1	0	2	0
Eureka SO	1	0	1	0	0	0	5	1
Fallon PD	5	1	41	6	2	1	40	6
Henderson PD	135	13	1130	163	103	15	1023	180
Humboldt SO	4	2	36	7	3	0	20	2
Lander SO	1	0	27	4	4	0	17	3
Lincoln SO	3	1	10	2	1	0	7	0
Lovelock PD	4	0	18	13	4	1	29	13
LV Fire Dept	0	0	0	0	0	0	0	0
LV Metro	999	209	8240	2326	957	281	7438	2231
Lyon SO	8	1	113	19	16	2	138	29
Mesquite PD	3	2	14	9	7	6	25	16
Mineral SO	1	1	18	4	1	0	31	5
NLVPD	132	14	1093	97	138	13	973	89
Nye SO	28	16	308	150	20	14	307	190
Pershing SO	4	0	13	0	2	1	12	2
Reno PD	96	13	975	109	101	11	1112	165
Sparks PD	65	26	518	155	48	17	417	133
Storey SO	1	0	9	1	3	0	13	0
TMCC PD	2	0	7	0	1	0	5	0
UNLV PD	12	0	60	3	4	0	55	3
UNR PD	6	0	23	0	6	0	42	2
Washoe SO	38	2	320	31	23	3	245	30
Washoe Co Schl PD	5	0	8	0	0	0	10	1
Wendover PD	4	1	25	9	3	0	17	4
White Pine SO	3	0	27	1	2	0	20	1
Winnemucca PD	8	4	59	16	3	0	25	5
Yerington PD	2	0	36	21	4	0	23	11
<b>TOTALS</b>	<b>1668</b>	<b>326</b>	<b>14131</b>	<b>3322</b>	<b>1567</b>	<b>393</b>	<b>13064</b>	<b>3320</b>

## Nevada--Larceny--Incidence Level Variation--UCR

### September 2002

Agency	September 2002 Offenses	September 2002 Cleared	YTD Offenses	2002 YTD Cleared	September 2001 Offense	September 2001 Cleared	YTD Offenses	2001 YTD Cleared
Boulder	16	2	110	13	7	4	99	39
Carlin PD	3	0	35	6	0	0	34	2
Carson SO	116	18	931	111	116	12	894	99
Churchill SO	11	0	124	26	16	2	105	21
Clark Co Schi PD	69	3	524	53	49	9	498	55
Douglas SO	54	14	487	150	50	11	440	137
Elko PD	31	6	324	58	44	1	369	43
Elko SO	14	2	81	12	16	0	80	5
Esmeralda SO	0	0	2	0	0	0	0	0
Eureka SO	1	1	10	3	1	0	9	2
Fallon PD	33	3	303	44	25	6	259	55
Henderson PD	230	39	1941	466	195	46	2215	483
Humboldt SO	5	0	50	12	4	0	37	10
Lander SO	3	0	46	3	3	0	49	7
Lincoln SO	4	0	18	1	2	0	16	0
Lovelock PD	8	8	29	20	2	0	25	14
LV Fire Dept	0	0	0	0	0	0	0	0
LV Metro	2223	522	18150	5264	1709	508	16809	5185
Lyon SO	33	3	279	54	52	5	419	59
Mesquite PD	14	8	108	59	15	5	61	29
Mineral SO	1	0	17	6	3	0	44	5
NLVPD	266	49	2300	509	204	45	2025	503
Nye SO	53	29	457	241	43	32	323	218
Pershing SO	9	1	51	9	5	2	41	11
Reno PD	608	117	5614	978	586	86	5273	1072
Sparks PD	167	57	1870	559	209	50	1798	476
Storey SO	4	0	30	2	3	0	30	5
TMCC PD	2	0	12	0	0	0	15	0
UNLV PD	52	1	263	13	36	2	219	16
UNR PD	22	0	94	4	5	0	89	0
Washoe SO	75	13	695	122	69	18	641	182
Washoe Co Schi PD	21	1	89	30	1	1	36	16
Wendover PD	10	2	107	22	11	2	88	22
White Pine SO	8	1	89	10	12	1	101	27
Winnemucca PD	18	6	110	34	8	3	93	45
Yerington PD	1	1	30	20	4	0	22	12
<b>TOTALS</b>	<b>4185</b>	<b>907</b>	<b>35380</b>	<b>8914</b>	<b>3505</b>	<b>851</b>	<b>33256</b>	<b>8855</b>

## Nevada--MV Theft--Incidence Level Variation--UCR

### September 2002

Agency	September 2002 Offenses	September 2002 Cleared	YTD Offenses	2001 YTD Cleared	September 2001 Offenses	September 2001 Cleared	YTD Offenses	2001 YTD Cleared
Boulder	7	5	20	10	2	1	19	2
Carlin PD	0	0	5	4	0	0	3	1
Carson SO	10	1	97	13	16	0	80	4
Churchill SO	1	1	22	12	2	0	10	3
Clark Co Schl PD	4	0	36	2	5	1	29	3
Douglas SO	2	2	48	37	4	3	33	25
Elko PD	1	0	22	7	4	0	25	4
Elko SO	1	1	14	10	1	0	16	4
Esmeralda SO	1	1	1	1	0	0	0	0
Eureka SO	0	0	0	0	0	0	1	0
Fallon PD	5	3	21	9	5	0	19	4
Henderson PD	110	7	807	61	97	6	622	78
Humboldt SO	3	3	9	5	1	1	4	2
Lander SO	1	1	7	1	0	0	1	1
Lincoln SO	0	0	6	3	0	0	3	3
Lovelock PD	0	0	3	3	1	0	3	1
LV Fire Dept	0	0	0	0	0	0	0	0
LV Metro	1138	166	8983	1382	911	146	7528	887
Lyon SO	6	2	36	12	8	2	29	9
Mesquite PD	3	3	32	16	2	0	14	1
Mineral SO	1	1	2	1	0	0	2	2
NLVPD	153	11	1165	82	90	4	909	68
Nye SO	5	4	55	35	2	1	19	13
Pershing SO	0	0	2	0	1	0	6	5
Reno PD	99	8	809	73	92	9	641	61
Sparks PD	31	6	228	78	32	11	208	77
Storey SO	0	0	6	3	0	0	4	0
TMCC PD	0	0	1	0	0	0	0	0
UNLV PD	15	1	37	2	8	0	27	2
UNR PD	1	0	4	0	0	0	1	0
Washoe SO	11	2	132	20	18	3	129	42
Washoe Co Schl PD	0	0	0	0	0	0	1	0
Wendover PD	0	0	12	5	1	0	4	1
White Pine SO	0	0	4	0	0	0	3	2
Winnemucca PD	1	1	20	5	2	0	17	7
Yerington PD	0	0	3	1	0	0	2	0
<b>TOTALS</b>	<b>1610</b>	<b>230</b>	<b>12649</b>	<b>1893</b>	<b>1305</b>	<b>188</b>	<b>10412</b>	<b>1312</b>

## Nevada--Arson--Incidence Level Variation--UCR

### September 2002

Agency	September 2002 Offenses	September 2002 Cleared	YTD Offenses	2002 YTD Cleared	September 2001 Offenses	September 2001 Cleared	YTD Offenses	2001 YTD Cleared
Boulder	0	0	3	1	0	0	6	5
Carlin PD	0	0	0	0	0	0	0	0
Carson SO	1	0	10	2	4	1	14	5
Churchill SO	1	0	2	1	0	0	1	1
Clark Co Schl PD	1	0	43	16	4	0	53	13
Douglas SO	1	0	4	3	0	0	0	0
Elko PD	1	0	8	2	0	0	4	2
Elko SO	0	0	1	0	1	1	3	2
Esmeralda SO	0	0	0	0	0	0	0	0
Eureka SO	0	0	1	0	0	0	0	0
Fallon PD	0	0	0	0	0	0	0	0
Henderson PD	4	1	33	7	5	4	27	10
Humboldt SO	0	0	0	0	1	0	1	0
Lander SO	0	0	0	0	0	0	0	0
Lincoln SO	0	0	0	0	0	0	0	0
Lovelock PD	0	0	0	0	0	0	0	0
LV Fire Dept	8	0	115	9	15	0	96	16
LV Metro	12	0	122	0	8	0	104	0
Lyon SO	0	0	2	1	0	0	1	1
Mesquite PD	0	0	0	0	0	0	0	0
Mineral SO	0	0	2	1	1	1	3	1
NLVPD	7	0	47	5	2	1	29	3
Nye SO	2	0	9	4	0	0	6	3
Pershing SO	0	0	0	0	0	0	0	0
Reno PD	12	1	41	8	3	0	40	6
Sparks PD	0	0	0	0	0	0	0	0
Storey SO	0	0	0	0	0	0	0	0
TMCC PD	0	0	0	0	0	0	0	0
UNLV PD	0	0	2	0	0	0	1	0
UNR PD	0	0	1	1	0	0	3	1
Washoe SO	1	0	4	2	0	0	4	0
Washoe CO Scl PD	1	0	3	2	0	0	4	3
Wendover PD	0	0	2	0	2	1	7	3
White Pine SO	1	0	2	1	0	0	4	4
Winnemucca PD	1	1	2	2	1	0	5	1
Yerington PD	0	0	0	0	0	0	0	0
<b>TOTALS</b>	<b>54</b>	<b>3</b>	<b>459</b>	<b>68</b>	<b>47</b>	<b>9</b>	<b>416</b>	<b>80</b>

# Nevada--Hate Crimes--UCR

**SEPTEMBER 2002**

AGENCY	OFFENSE	LOCATION	BIAS	VICTIM TYPE / NUMBER	OFFENDER RACE / NUMBER
Reno PD	Aggravated Assault	Highway/Road/Alley/Street	Anti-Male Homosexual	Individual/2	White/3
Las Vegas Metro PD	Destruction/Damage/Vandalism	Residence/Home	Anti-Black	Individual/2	Unknown
Las Vegas Metro PD	Intimidation	Church/Synagogue/Temple	Anti-Jewish	Religious Org.	Unknown

# Stolen/Recovered Property Report

## September 2002

Property Type	Boulder PD	Carlin PD	Carson SO	Churchill SO	Clark Co Schi PD	Douglas SO	Elko PD	Elko SO	Esmeralda SO
<b>Currency</b>									
Stolen	\$70	\$600	\$3,940	\$0	\$4,901	\$10,251	\$1,545	\$2,723	\$0
Recovered	\$0	\$0	\$0	\$0	\$0	\$0	\$0	\$0	\$0
% Recovered	0.0%	0.0%	0.0%	0.0%	0.0%	0.0%	0.0%	0.0%	0.0%
<b>Jewelry</b>									
Stolen	\$2,015	\$0	\$26,829	\$0	\$300	\$8,190	\$350	\$395	\$0
Recovered	\$0	\$0	\$0	\$0	\$0	\$0	\$150	\$0	\$0
% Recovered	0.0%	0.0%	0.0%	0.0%	0.0%	0.0%	42.9%	0.0%	0.0%
<b>Clothing</b>									
Stolen	\$0	\$0	\$255	\$0	\$310	\$1,514	\$355	\$0	\$0
Recovered	\$0	\$0	\$0	\$0	\$0	\$100	\$0	\$0	\$0
% Recovered	0.0%	0.0%	0.0%	0.0%	0.0%	6.6%	0.0%	0.0%	0.0%
<b>Motor Vehicle</b>									
Stolen	\$72,400	\$0	\$1,679,839	\$2,000	\$8,300	\$9,000	\$0	\$3,000	\$250
Recovered	\$63,200	\$0	\$38,000	\$2,000	\$7,000	\$2,500	\$0	\$3,000	\$250
% Recovered	87.3%	0.0%	2.3%	100.0%	84.3%	27.8%	0.0%	100.0%	100.0%
<b>Office Equipment</b>									
Stolen	\$50	\$0	\$2,800	\$0	\$11,896	\$0	\$540	\$225	\$0
Recovered	\$0	\$0	\$0	\$0	\$0	\$0	\$0	\$0	\$0
% Recovered	0.0%	0.0%	0.0%	0.0%	0.0%	0.0%	0.0%	0.0%	0.0%
<b>TV, VCR, Camera, Etc.</b>									
Stolen	\$0	\$0	\$22,812	\$320	\$13,430	\$5,225	\$850	\$1,026	\$0
Recovered	\$0	\$0	\$0	\$0	\$4,200	\$450	\$0	\$0	\$0
% Recovered	0.0%	0.0%	0.0%	0.0%	31.3%	8.6%	0.0%	0.0%	0.0%
<b>Firearm</b>									
Stolen	\$0	\$0	\$2,899	\$0	\$0	\$9,030	\$0	\$0	\$0
Recovered	\$0	\$0	\$0	\$0	\$0	\$0	\$0	\$0	\$0
% Recovered	0.0%	0.0%	0.0%	0.0%	0.0%	0.0%	0.0%	0.0%	0.0%
<b>Household Goods</b>									
Stolen	\$0	\$0	\$610	\$1,300	\$0	\$0	\$1,805	\$0	\$0
Recovered	\$0	\$0	\$0	\$0	\$0	\$0	\$20	\$0	\$0
% Recovered	0.0%	0.0%	0.0%	0.0%	0.0%	0.0%	1.1%	0.0%	0.0%
<b>Consumable Goods</b>									
Stolen	\$0	\$0	\$685	\$92	\$0	\$25	\$111	\$0	\$0
Recovered	\$0	\$0	\$0	\$0	\$0	\$25	\$1	\$0	\$0
% Recovered	0.0%	0.0%	0.0%	0.0%	0.0%	100.0%	0.9%	0.0%	0.0%
<b>Livestock</b>									
Stolen	\$0	\$0	\$70	\$210	\$0	\$0	\$0	\$0	\$0
Recovered	\$0	\$0	\$0	\$0	\$0	\$0	\$0	\$0	\$0
% Recovered	0.0%	0.0%	0.0%	0.0%	0.0%	0.0%	0.0%	0.0%	0.0%
<b>Misc.</b>									
Stolen	\$11,896	\$1,260	\$64,796	\$9,642	\$79,435	\$17,282	\$2,292	\$9,255	\$0
Recovered	\$5,640	\$0	\$0	\$6,515	\$540	\$367	\$696	\$500	\$0
% Recovered	47.4%	0.0%	0.0%	67.6%	0.7%	2.1%	30.4%	5.4%	0.0%
<b>TOTALS</b>									
Stolen	\$86,431	\$1,860	\$1,805,535	\$13,564	\$118,572	\$60,517	\$7,848	\$16,624	\$250
Recovered	\$68,840	\$0	\$38,000	\$8,515	\$11,740	\$3,442	\$867	\$3,500	\$250
% Recovered	79.6%	0.0%	2.1%	62.8%	9.9%	5.7%	11.0%	21.1%	100.0%

# Stolen/Recovered Property Report

## September 2002

Property Type	Eureka SO	Fallon PD	Henderson PD	Humboldt SO	Lander SO	Las Vegas Metro	Lincoln SO	Lovelock PD	Lyon SO
<b>Currency</b>									
Stolen	\$0	\$1,033	\$33,446	\$0	\$1	\$1,975,536	\$81	\$0	\$1,832
Recovered	\$0	\$0	\$716	\$0	\$1	\$2,200	\$81	\$0	\$150
% Recovered	0.0%	0.0%	2.1%	0.0%	100.0%	0.1%	100.0%	0.0%	8.2%
<b>Jewelry</b>									
Stolen	\$0	\$0	\$64,351	\$0	\$45	\$1,122,468	\$0	\$0	\$675
Recovered	\$0	\$995	\$8,051	\$0	\$0	\$16,079	\$0	\$0	\$0
% Recovered	0.0%	0.0%	12.5%	0.0%	0.0%	1.4%	0.0%	0.0%	0.0%
<b>Clothing</b>									
Stolen	\$0	\$0	\$116,928	\$450	\$500	\$211,667	\$996	\$0	\$0
Recovered	\$0	\$0	\$850	\$0	\$0	\$13,097	\$0	\$0	\$0
% Recovered	0.0%	0.0%	0.7%	0.0%	0.0%	6.2%	0.0%	0.0%	0.0%
<b>Motor Vehicle</b>									
Stolen	\$0	\$32,046	\$1,282,594	\$6,300	\$100	\$5,169,282	\$0	\$0	\$50,851
Recovered	\$0	\$28,825	\$740,382	\$5,800	\$100	\$1,565,571	\$0	\$0	\$47,300
% Recovered	0.0%	89.9%	57.7%	92.1%	100.0%	30.3%	0.0%	0.0%	93.0%
<b>Office Equipment</b>									
Stolen	\$0	\$0	\$18,317	\$0	\$0	\$348,587	\$0	\$0	\$0
Recovered	\$0	\$0	\$0	\$0	\$0	\$2,336	\$0	\$0	\$0
% Recovered	0.0%	0.0%	0.0%	0.0%	0.0%	0.7%	0.0%	0.0%	0.0%
<b>TV, VCR, Camera, Etc.</b>									
Stolen	\$0	\$800	\$86,980	\$0	\$0	\$575,351	\$0	\$655	\$3,174
Recovered	\$0	\$0	\$6,022	\$0	\$0	\$7,930	\$0	\$0	\$600
% Recovered	0.0%	0.0%	6.9%	0.0%	0.0%	1.4%	0.0%	0.0%	18.9%
<b>Firearm</b>									
Stolen	\$0	\$950	\$5,986	\$1,150	\$574	\$33,144	\$0	\$0	\$900
Recovered	\$0	\$0	\$450	\$0	\$0	\$0	\$0	\$0	\$300
% Recovered	0.0%	0.0%	7.5%	0.0%	0.0%	0.0%	0.0%	0.0%	33.3%
<b>Household Goods</b>									
Stolen	\$0	\$500	\$3,265	\$900	\$515	\$151,798	\$200	\$0	\$541
Recovered	\$0	\$0	\$0	\$0	\$0	\$174	\$0	\$0	\$0
% Recovered	0.0%	0.0%	0.0%	0.0%	0.0%	0.1%	0.0%	0.0%	0.0%
<b>Consumable Goods</b>									
Stolen	\$5	\$21	\$1,430	\$920	\$0	\$51,339	\$0	\$0	\$351
Recovered	\$5	\$10	\$180	\$0	\$0	\$4,120	\$0	\$0	\$1
% Recovered	100.0%	47.6%	12.6%	0.0%	0.0%	8.0%	0.0%	0.0%	0.2%
<b>Livestock</b>									
Stolen	\$0	\$0	\$0	\$0	\$0	\$1,200	\$0	\$0	\$1,500
Recovered	\$0	\$0	\$0	\$0	\$0	\$300	\$0	\$0	\$500
% Recovered	0.0%	0.0%	0.0%	0.0%	0.0%	25.0%	0.0%	0.0%	33.3%
<b>Misc.</b>									
Stolen	\$369	\$5,248	\$166,543	\$2,220	\$949	\$2,806,878	\$332	\$1,166	\$19,331
Recovered	\$269	\$276	\$1,245	\$0	\$0	\$25,036	\$1	\$175	\$250
% Recovered	72.9%	5.3%	0.7%	0.0%	0.0%	0.9%	0.3%	15.0%	1.3%
<b>TOTALS</b>									
Stolen	\$374	\$40,598	\$1,779,840	\$11,940	\$2,684	\$12,447,250	\$1,609	\$1,821	\$79,154
Recovered	\$274	\$30,106	\$757,896	\$5,800	\$101	\$1,636,843	\$82	\$175	\$49,101
% Recovered	73.3%	74.2%	42.6%	48.6%	3.8%	13.2%	5.1%	9.6%	62.0%

# Stolen/Recovered Property Report

## September 2002

Property Type	Mesquite PD	Mineral SO	NLVPD	Nye SO	Pershing SO	Reno PD	Sparks PD	Storey SO	TMCC PD	UNLV PD
<b>Currency</b>										
Stolen	\$298	\$0	\$49,215	\$3,500	\$0	\$65,074	\$30,851	\$820	\$77	\$842
Recovered	\$5	\$0	\$926	\$0	\$0	\$1,646	\$8	\$0	\$0	\$0
% Recovered	1.7%	0.0%	1.9%	0.0%	0.0%	2.5%	0.0%	0.0%	0.0%	0.0%
<b>Jewelry</b>										
Stolen	\$150	\$0	\$93,729	\$500	\$0	\$122,678	\$49,642	\$0	\$500	\$1,230
Recovered	\$150	\$0	\$2,761	\$0	\$0	\$127	\$971	\$0	\$0	\$0
% Recovered	100.0%	0.0%	2.9%	0.0%	0.0%	0.1%	2.0%	0.0%	0.0%	0.0%
<b>Clothing</b>										
Stolen	\$0	\$0	\$13,734	\$1,000	\$200	\$8,317	\$2,224	\$0	\$10	\$1,661
Recovered	\$0	\$0	\$627	\$0	\$0	\$878	\$77	\$0	\$0	\$865
% Recovered	0.0%	0.0%	4.6%	0.0%	0.0%	10.6%	3.5%	0.0%	0.0%	52.1%
<b>Motor Vehicle</b>										
Stolen	\$1,000	\$0	\$1,324,294	\$45,200	\$0	\$843,455	\$224,400	\$0	\$0	\$53,145
Recovered	\$0	\$0	\$870,560	\$40,200	\$0	\$334,504	\$165,800	\$0	\$0	\$20,500
% Recovered	0.0%	0.0%	65.7%	88.9%	0.0%	39.7%	73.9%	0.0%	0.0%	38.6%
<b>Office Equipment</b>										
Stolen	\$0	\$0	\$3,706	\$0	\$0	\$14,754	\$10,178	\$0	\$0	\$3,430
Recovered	\$0	\$0	\$6	\$0	\$0	\$4	\$2,413	\$0	\$0	\$0
% Recovered	0.0%	0.0%	0.2%	0.0%	0.0%	0.0%	23.7%	0.0%	0.0%	0.0%
<b>TV, VCR, Camera, Etc.</b>										
Stolen	\$559	\$0	\$154,972	\$500	\$0	\$75,188	\$45,516	\$4,425	\$0	\$11,156
Recovered	\$559	\$0	\$2,189	\$0	\$0	\$2,287	\$1,683	\$0	\$0	\$1,475
% Recovered	100.0%	0.0%	1.4%	0.0%	0.0%	3.0%	3.7%	0.0%	0.0%	13.2%
<b>Firearm</b>										
Stolen	\$0	\$0	\$13,449	\$1,250	\$0	\$9,618	\$35,450	\$0	\$0	\$0
Recovered	\$0	\$0	\$400	\$0	\$0	\$0	\$0	\$0	\$0	\$0
% Recovered	0.0%	0.0%	3.0%	0.0%	0.0%	0.0%	0.0%	0.0%	0.0%	0.0%
<b>Household Goods</b>										
Stolen	\$0	\$0	\$7,793	\$2,400	\$0	\$6,557	\$17,033	\$0	\$0	\$0
Recovered	\$0	\$0	\$400	\$1,000	\$0	\$1,507	\$1,098	\$0	\$0	\$0
% Recovered	0.0%	0.0%	5.1%	41.7%	0.0%	23.0%	6.4%	0.0%	0.0%	0.0%
<b>Consumable Goods</b>										
Stolen	\$20	\$0	\$2,434	\$0	\$0	\$2,425	\$694,975	\$0	\$0	\$0
Recovered	\$20	\$0	\$646	\$0	\$0	\$1,519	\$216	\$0	\$0	\$0
% Recovered	100.0%	0.0%	26.5%	0.0%	0.0%	62.6%	0.0%	0.0%	0.0%	0.0%
<b>Livestock</b>										
Stolen	\$0	\$0	\$1,550	\$0	\$0	\$0	\$0	\$0	\$0	\$0
Recovered	\$0	\$0	\$0	\$0	\$0	\$0	\$0	\$0	\$0	\$0
% Recovered	0.0%	0.0%	0.0%	0.0%	0.0%	0.0%	0.0%	0.0%	0.0%	0.0%
<b>Misc.</b>										
Stolen	\$1,024	\$1,586	\$439,000	\$11,102	\$10,022	\$244,653	\$51,478	\$6,400	\$2,218	\$8,620
Recovered	\$689	\$1,400	\$8,633	\$5,320	\$0	\$9,445	\$4,704	\$0	\$0	\$800
% Recovered	67.3%	88.3%	2.0%	47.9%	0.0%	3.9%	9.1%	0.0%	0.0%	9.3%
<b>TOTALS</b>										
Stolen	\$3,051	\$1,586	\$2,103,876	\$65,452	\$10,222	\$1,392,719	\$1,161,747	\$11,645	\$2,805	\$80,084
Recovered	\$1,423	\$1,400	\$887,148	\$46,520	\$0	\$351,917	\$176,970	\$0	\$0	\$23,640
% Recovered	46.6%	88.3%	42.2%	71.1%	0.0%	25.3%	15.2%	0.0%	0.0%	29.5%

# Stolen/Recovered Property Report

**September 2002**

Property Type	UNR PD	Washoe SO	Washoe Co Schl PD	Wendover PD	White Pine SO	Winnemucca PD	Yerington PD	Total By Property
<b>Currency</b>								
Stolen	\$2,985	\$19,662	\$3,644	\$1,572	\$316	\$20,396	\$0	\$2,235,211
Recovered	\$0	\$0	\$0	\$0	\$0	\$0	\$0	\$5,733
% Recovered	0.0%	0.0%	0.0%	0.0%	0.0%	0.0%	0.0%	0.3%
<b>Jewelry</b>								
Stolen	\$0	\$43,616	\$0	\$0	\$0	\$200	\$0	\$1,537,863
Recovered	\$0	\$0	\$0	\$0	\$0	\$0	\$0	\$29,284
% Recovered	0.0%	0.0%	0.0%	0.0%	0.0%	0.0%	0.0%	1.9%
<b>Clothing</b>								
Stolen	\$0	\$1,048	\$20	\$150	\$0	\$50	\$0	\$361,389
Recovered	\$0	\$20	\$0	\$0	\$0	\$0	\$0	\$16,514
% Recovered	0.0%	1.9%	0.0%	0.0%	0.0%	0.0%	0.0%	4.6%
<b>Motor Vehicle</b>								
Stolen	\$500	\$43,550	\$0	\$0	\$0	\$8,000	\$0	\$10,859,506
Recovered	\$0	\$10,500	\$0	\$0	\$0	\$14,000	\$0	\$3,959,992
% Recovered	0.0%	24.1%	0.0%	0.0%	0.0%	175.0%	0.0%	36.5%
<b>Office Equipment</b>								
Stolen	\$3,838	\$5,360	\$7,433	\$0	\$0	\$0	\$0	\$431,114
Recovered	\$0	\$0	\$1,231	\$0	\$0	\$0	\$0	\$5,990
% Recovered	0.0%	0.0%	16.6%	0.0%	0.0%	0.0%	0.0%	1.4%
<b>TV, VCR, Camera, Etc.</b>								
Stolen	\$3,240	\$18,831	\$5,108	\$350	\$310	\$1,140	\$0	\$1,031,918
Recovered	\$0	\$0	\$0	\$300	\$0	\$0	\$0	\$27,695
% Recovered	0.0%	0.0%	0.0%	85.7%	0.0%	0.0%	0.0%	2.7%
<b>Firearm</b>								
Stolen	\$0	\$8,121	\$0	\$0	\$0	\$560	\$0	\$123,081
Recovered	\$0	\$959	\$0	\$0	\$0	\$1,700	\$0	\$3,809
% Recovered	0.0%	11.8%	0.0%	0.0%	0.0%	303.6%	0.0%	3.1%
<b>Household Goods</b>								
Stolen	\$0	\$5,680	\$843	\$100	\$0	\$500	\$0	\$202,340
Recovered	\$0	\$0	\$0	\$0	\$0	\$0	\$0	\$4,199
% Recovered	0.0%	0.0%	0.0%	0.0%	0.0%	0.0%	0.0%	2.1%
<b>Consumable Goods</b>								
Stolen	\$0	\$236	\$0	\$0	\$16	\$101	\$0	\$755,185
Recovered	\$0	\$52	\$0	\$0	\$0	\$101	\$0	\$6,896
% Recovered	0.0%	22.0%	0.0%	0.0%	0.0%	100.0%	0.0%	0.9%
<b>Livestock</b>								
Stolen	\$0	\$0	\$0	\$0	\$0	\$0	\$0	\$4,530
Recovered	\$0	\$0	\$0	\$0	\$0	\$0	\$0	\$800
% Recovered	0.0%	0.0%	0.0%	0.0%	0.0%	0.0%	0.0%	17.7%
<b>Misc.</b>								
Stolen	\$10,375	\$52,439	\$2,009	\$9,159	\$884	\$7,993	\$0	\$4,057,856
Recovered	\$0	\$9,034	\$710	\$0	\$14	\$1,200	\$0	\$83,459
% Recovered	0.0%	17.2%	35.3%	0.0%	1.6%	15.0%	0.0%	2.1%
<b>TOTALS</b>								
Stolen	\$20,939	\$198,543	\$19,057	\$11,331	\$1,526	\$38,940	\$0	\$21,599,993
Recovered	\$0	\$20,565	\$1,941	\$300	\$14	\$17,001	\$0	\$4,144,370
% Recovered	0.0%	10.4%	10.2%	2.6%	0.9%	43.7%	0.0%	19.2%

## Nevada--Assaults on Officers by Agency--UCR

### September 2002

Agency	September				September			
	2002 Offenses	September 2002 Cleared	2002 YTD Offenses	2002 YTD Cleared	2001 Offenses	September 2001 Cleared	2001 YTD Offenses	2001 YTD Cleared
Boulder	0	0	0	0	0	0	2	2
Carlin PD	0	0	3	3	0	0	1	1
Carson SO	0	0	9	8	0	0	12	12
Churchill SO	1	1	3	3	2	2	3	3
ClrkSchIDst PD	0	0	0	0	0	0	0	0
Douglas SO	0	0	5	5	0	0	4	4
Elko PD	0	0	3	3	0	0	0	0
Elko SO	0	0	0	0	0	0	0	0
Esmeralda SO	0	0	0	0	0	0	0	0
Eureka SO	0	0	0	0	0	0	0	0
Fallon PD	0	0	0	0	0	0	3	3
Henderson PD	1	1	23	23	4	4	30	30
Highway Patrol	1	1	18	18	0	0	14	14
Humboldt SO	0	0	3	3	0	0	0	0
Lander SO	0	0	0	0	0	0	0	0
Lincoln SO	0	0	0	0	0	0	0	0
Lovelock PD	0	0	0	0	0	0	0	0
LV Fire Dept	0	0	0	0	0	0	0	0
LV Metro	39	39	221	221	27	27	197	197
Lyon SO	0	0	4	4	0	0	6	6
Mesquite PD	0	0	0	0	0	0	0	0
Mineral SO	0	0	3	3	0	0	0	0
NV Div Investigations	0	0	0	0	0	0	0	0
NLVPD	6	6	59	59	5	5	32	31
Nye SO	3	3	12	12	0	0	4	4
Pershing SO	0	0	0	0	0	0	0	0
Reno PD	2	2	3	3	0	0	9	9
Sparks PD	0	0	3	3	0	0	7	7
Storey SO	0	0	0	0	0	0	0	0
TMCC PD	0	0	0	0	0	0	0	0
UNLV PD	0	0	1	1	1	1	8	7
UNR PD	0	0	0	0	0	0	0	0
Washoe SO	1	1	14	12	2	1	9	8
Washoe Co SchI PD	0	0	3	3	0	0	1	1
Wendover PD	0	0	1	1	0	0	2	2
White Pine SO	1	1	1	1	0	0	1	1
Winnemucca PD	0	0	3	3	0	0	6	6
Yerington PD	0	0	0	0	0	0	0	0
<b>TOTALS</b>	<b>55</b>	<b>55</b>	<b>395</b>	<b>392</b>	<b>41</b>	<b>40</b>	<b>351</b>	<b>348</b>

**Nevada -- Assaults by Agency/Weapon/Assignment -- UCR**

**SEPTEMBER 2002**

Table 16

Agency	Total Assaults	Number Cleared	Firearm	Knife / Cutting Device	Other Danger. Weapon	Hands, Fists, Feet, Etc.	2-Officer Vehicle	1-Officer Vehicle- Alone	1-Officer Vehicle- Assisted	Det./Spec. Assign. - Alone	Det./Spec. Assign. - Assisted	Other- Alone	Other- Assisted
Boulder City PD	0	0	0	0	0	0	0	0	0	0	0	0	0
Carlin PD	0	0	0	0	0	0	0	0	0	0	0	0	0
Carson City SO	0	0	0	0	0	0	0	0	0	0	0	0	0
Churchill Co SO	1	1	0	0	0	1	0	0	0	0	0	0	1
Clark School Dist PD	0	0	0	0	0	0	0	0	0	0	0	0	0
Douglas Co SO	0	0	0	0	0	0	0	0	0	0	0	0	0
Elko PD	0	0	0	0	0	0	0	0	0	0	0	0	0
Elko Co SO	0	0	0	0	0	0	0	0	0	0	0	0	0
Esmeralda Co SO	0	0	0	0	0	0	0	0	0	0	0	0	0
Eureka Co SO	0	0	0	0	0	0	0	0	0	0	0	0	0
Fallon PD	0	0	0	0	0	0	0	0	0	0	0	0	0
Henderson PD	1	1	0	0	0	1	1	0	0	0	0	0	0
NV Highway Patrol	1	1	0	0	0	1	0	1	0	0	0	0	0
Humboldt Co SO	0	0	0	0	0	0	0	0	0	0	0	0	0
Lander Co SO	0	0	0	0	0	0	0	0	0	0	0	0	0
Lincoln Co SO	0	0	0	0	0	0	0	0	0	0	0	0	0
Lovelock PD	0	0	0	0	0	0	0	0	0	0	0	0	0
Las Vegas Fire Dept	0	0	0	0	0	0	0	0	0	0	0	0	0
Las Vegas Metro PD	39	39	2	0	3	34	17	7	11	0	0	1	3
Lyon Co SO	0	0	0	0	0	0	0	0	0	0	0	0	0
Mesquite PD	0	0	0	0	0	0	0	0	0	0	0	0	0
Mineral Co SO	0	0	0	0	0	0	0	0	0	0	0	0	0
NV Div of Investigations	0	0	0	0	0	0	0	0	0	0	0	0	0
North Las Vegas PD	6	6	0	0	6	0	4	1	1	0	0	0	0
Nye Co SO	3	3	0	0	0	3	0	1	2	0	0	0	0
Pershing Co SO	0	0	0	0	0	0	0	0	0	0	0	0	0
Reno PD	2	2	0	0	1	1	1	0	0	1	0	0	0
Sparks PD	0	0	0	0	0	0	0	0	0	0	0	0	0
Storey Co SO	0	0	0	0	0	0	0	0	0	0	0	0	0
TMCC PD	0	0	0	0	0	0	0	0	0	0	0	0	0
UNLV PD	0	0	0	0	0	0	0	0	0	0	0	0	0
UNR PD	0	0	0	0	0	0	0	0	0	0	0	0	0
Washoe Co SO	1	1	0	0	0	1	1	0	0	0	0	0	0
Washoe Co School PD	0	0	0	0	0	0	0	0	0	0	0	0	0
West Wendover PD	0	0	0	0	0	0	0	0	0	0	0	0	0
White Pine Co SO	1	1	0	0	0	1	0	0	1	0	0	0	0
Winnemucca PD	0	0	0	0	0	0	0	0	0	0	0	0	0
Yerington PD	0	0	0	0	0	0	0	0	0	0	0	0	0
<b>TOTALS</b>	<b>55</b>	<b>55</b>	<b>2</b>	<b>0</b>	<b>10</b>	<b>43</b>	<b>24</b>	<b>10</b>	<b>15</b>	<b>1</b>	<b>0</b>	<b>1</b>	<b>4</b>

28

# Nevada -- Officer Assaults by Activity/Weapon/Assignment -- UCR

## SEPTEMBER 2002

Table 17

29

ACTIVITY TYPE	Total Assaults	Number Cleared	Firearm	Knife / Cutting Device	Other Danger. Weapon	Hands, Fists, Feet, Etc.	2-Officer Vehicle	1-Officer Vehicle-Alone	1-Officer Vehicle-Assisted	Det./Spec. Assign.-Alone	Det./Spec. Assign.-Assisted	Other-Alone	Other-Assisted
DOMESTIC / OTHER DISTURBANCE	30	30	2	0	6	22	16	3	11	0	0	0	0
BURGLARY IN PROGRESS	1	1	0	0	0	1	1	0	0	0	0	0	0
ROBBERY IN PROGRESS	0	0	0	0	0	0	0	0	0	0	0	0	0
ATTEMPTING OTHER ARREST	3	3	0	0	0	3	0	1	2	0	0	0	0
CIVIL DISORDER	0	0	0	0	0	0	0	0	0	0	0	0	0
HANDLING PRISONER	6	6	0	0	0	6	2	2	0	0	0	1	1
INVEST. SUSP. PERSONS / CIRCUM.	5	5	0	0	2	3	3	1	0	1	0	0	0
AMBUSH-NO WARNING	0	0	0	0	0	0	0	0	0	0	0	0	0
MENTALLY DERANGED	0	0	0	0	0	0	0	0	0	0	0	0	0
TRAFFIC PURSUITS / STOPS	6	6	0	0	2	4	2	2	1	0	0	0	1
ALL OTHER	4	4	0	0	0	4	0	1	1	0	0	0	2
<b>TOTALS</b>	<b>55</b>	<b>55</b>	<b>2</b>	<b>0</b>	<b>10</b>	<b>43</b>	<b>24</b>	<b>10</b>	<b>15</b>	<b>1</b>	<b>0</b>	<b>1</b>	<b>4</b>

## Nevada--Assaults with Injury/without Injury--UCR

### SEPTEMBER 2002

Agency	Total		Firearm		Cutting Instruments		Other Dangerous weapons		Hands, Fists, Feet, Etc.		
	Assaults by weapon	With personal injury	Without personal injury	With personal injury	Without personal injury	With personal injury	Without personal injury	With personal injury	Without personal injury	With personal injury	
Boulder City PD	0	0	0	0	0	0	0	0	0	0	
Carlin PD	0	0	0	0	0	0	0	0	0	0	
Carson City SO	0	0	0	0	0	0	0	0	0	0	
Churchill Co SO	0	0	0	0	0	0	0	0	0	0	
Clark Co Schl Dist PD	0	0	0	0	0	0	0	0	0	0	
Douglas Co SO	0	0	0	0	0	0	0	0	0	0	
Elko Co SO	0	0	0	0	0	0	0	0	0	0	
Elko PD	0	0	0	0	0	0	0	0	0	0	
Esmeralda Co SO	0	0	0	0	0	0	0	0	0	0	
Eureka Co SO	0	0	0	0	0	0	0	0	0	0	
Fallon PD	0	0	0	0	0	0	0	0	0	0	
Henderson PD	1	0	1	0	0	0	0	0	0	1	
NV Highway Patrol	1	0	1	0	0	0	0	0	0	1	
Humboldt Co SO	0	0	0	0	0	0	0	0	0	0	
Lander Co SO	0	0	0	0	0	0	0	0	0	0	
Las Vegas Metro PD	41	2	39	0	2	0	0	0	3	2	34
Lincoln Co SO	0	0	0	0	0	0	0	0	0	0	0
Lovelock PD	0	0	0	0	0	0	0	0	0	0	0
Lyon Co SO	0	0	0	0	0	0	0	0	0	0	0
Mesquite PD	0	0	0	0	0	0	0	0	0	0	0
Mineral Co SO	0	0	0	0	0	0	0	0	0	0	0
NV Div Investigations	0	0	0	0	0	0	0	0	0	0	0
North Las Vegas PD	6	0	6	0	0	0	0	6	0	0	0
Nye Co SO	3	2	1	0	0	0	0	0	0	2	1
Pershing Co SO	0	0	0	0	0	0	0	0	0	0	0
Reno PD	2	0	2	0	0	0	0	1	0	0	1
Sparks PD	0	0	0	0	0	0	0	0	0	0	0
Storey Co SO	0	0	0	0	0	0	0	0	0	0	0
TMCC PD	0	0	0	0	0	0	0	0	0	0	0
UNLV PD	0	0	0	0	0	0	0	0	0	0	0
UNR PD	0	0	0	0	0	0	0	0	0	0	0
Washoe Co SO	1	1	0	0	0	0	0	0	1	0	0
Washoe Co School Dist.	0	0	0	0	0	0	0	0	0	0	0
West Wendover PD	0	0	0	0	0	0	0	0	0	0	0
White Pine Co SO	1	0	1	0	0	0	0	0	0	0	1
Winnemucca PD	0	0	0	0	0	0	0	0	0	0	0
Yerington PD	0	0	0	0	0	0	0	0	0	0	0
<b>Totals</b>	<b>56</b>	<b>5</b>	<b>51</b>	<b>0</b>	<b>2</b>	<b>0</b>	<b>0</b>	<b>0</b>	<b>10</b>	<b>5</b>	<b>39</b>

## Nevada--Time of Assaults on Officers--UCR

### September 2002

Agency	2:00 AM	4:00 AM	6:00 AM	8:00 AM	10:00 AM	12:00 AM	12:01- 2:00 PM	2:00- 4:00 PM	4:00- 6:00 PM	6:00- 8:00 PM	10:00 PM	10:00- 12:00 PM
Boulder City PD	0	0	0	0	0	0	0	0	0	0	0	0
Carlin PD	0	0	0	0	0	0	0	0	0	0	0	0
Carson City SO	0	0	0	0	0	0	0	0	0	0	0	0
Churchill Co SO	0	1	0	0	0	0	0	0	0	0	0	0
Clark Co Schl Dist PD	0	0	0	0	0	0	0	0	0	0	0	0
Douglas Co SO	0	0	0	0	0	0	0	0	0	0	0	0
Elko Co SO	0	0	0	0	0	0	0	0	0	0	0	0
Elko PD	0	0	0	0	0	0	0	0	0	0	0	0
Esmeralda Co SO	0	0	0	0	0	0	0	0	0	0	0	0
Eureka Co SO	0	0	0	0	0	0	0	0	0	0	0	0
Fallon PD	0	0	0	0	0	0	0	0	0	0	0	0
Henderson PD	1	0	0	0	0	0	0	0	0	0	0	0
Highway Patrol	0	0	0	0	0	0	0	0	0	1	0	0
Humbolt Co SO	0	0	0	0	0	0	0	0	0	0	0	0
Lander Co SO	0	0	0	0	0	0	0	0	0	0	0	0
Las Vegas Metro PD	7	0	3	2	7	4	1	2	3	6	1	3
Lincoln Co SO	0	0	0	0	0	0	0	0	0	0	0	0
Lovelock PD	0	0	0	0	0	0	0	0	0	0	0	0
Lyon Co SO	0	0	0	0	0	0	0	0	0	0	0	0
Mesquite PD	0	0	0	0	0	0	0	0	0	0	0	0
Mineral Co SO	0	0	0	0	0	0	0	0	0	0	0	0
NV Div Investigations	0	0	0	0	0	0	0	0	0	0	0	0
North LV PD	2	1	0	0	0	0	0	0	2	0	0	1
Nye Co SO	1	0	0	0	0	0	0	0	2	0	0	0
Pershing Co SO	0	0	0	0	0	0	0	0	0	0	0	0
Reno PD	0	0	1	0	1	0	0	0	0	0	0	0
Sparks PD	0	0	0	0	0	0	0	0	0	0	0	0
Storey Co SO	0	0	0	0	0	0	0	0	0	0	0	0
TMCC PD	0	0	0	0	0	0	0	0	0	0	0	0
UNLV PD	0	0	0	0	0	0	0	0	0	0	0	0
UNR PD	0	0	0	0	0	0	0	0	0	0	0	0
Washoe Co SO	1	0	0	0	0	0	0	0	0	0	0	0
Washoe Co Schl PD	0	0	0	0	0	0	0	0	0	0	0	0
West Wendover PD	0	0	0	0	0	0	0	0	0	0	0	0
White Pine Co SO	0	0	0	0	0	0	0	0	0	1	0	0
Winnemucca PD	0	0	0	0	0	0	0	0	0	0	0	0
Yerington PD	0	0	0	0	0	0	0	0	0	0	0	0
<b>Totals</b>	<b>12</b>	<b>2</b>	<b>4</b>	<b>2</b>	<b>8</b>	<b>4</b>	<b>1</b>	<b>2</b>	<b>7</b>	<b>8</b>	<b>1</b>	<b>4</b>





# Nevada -- Division Of Investigations

## Arrests for Narcotics Violations

September 2002

		10- 13-										25- 30- 35- 40- 45- 50- 55- 60-										Total	W	B	A	I																							
		<10	12	14	15	16	17	18	19	20	21	22	23	24	29	34	39	44	49	54	59						64	>64																					
<b>SALES/MANUFACTURING VIOLATIONS</b>																																																	
Opium or cocaine and their derivatives (morphine, heroin, codeine)	M																								0																								
	F																									0																							
Marijuana	M															1									1				1																				
	F																									0																							
Synthetic narcotics- Manufactured narcotics that can cause true drug addiction (demerol, meth)	M							1						1	2		2	1							7	7																							
	F							1							1				1						3	3																							
Other dangerous, non-narcotic, drugs (barbituates, benzderine)	M														1	1									2	2																							
	F																									0																							
Sub-Total	M	0	0	0	0	0	0	0	1	0	0	0	0	1	3	2	2	1	0	0	0	0	0	0	10	9	0	0	1																				
	F	0	0	0	0	0	0	0	1	0	0	0	0	0	1	0	0	0	1	0	0	0	0	0	3	3	0	0	0																				
<b>POSSESSION VIOLATIONS</b>																																																	
Opium or cocaine and their derivatives (morphine, heroin, codeine)	M																									0																							
	F																									0																							
Marijuana	M																1								1	1																							
	F																3								3	3																							
Synthetic narcotics- Manufactured narcotics that can cause true drug addiction (demerol, meth)	M							1			1				2	1		2	1						8	8																							
	F								1							1									2	2																							
Other dangerous, non-narcotic, drugs (barbituates, benzderine)	M							1									1								2	2																							
	F							1									1	1							3	2	1																						
Sub-Total	M	0	0	0	0	0	0	1	1	0	0	1	0	0	2	1	2	2	1	0	0	0	0	0	11	11	0	0	0																				
	F	0	0	0	0	0	0	1	0	1	0	0	0	0	0	1	4	1	0	0	0	0	0	0	8	7	1	0	0																				
<b>Total</b>		0	0	0	0	0	0	2	3	1	0	1	0	1	6	4	8	4	2	0	0	0	0	32	30	1	0	1																					

Nevada UCR  
\*Footnotes / Exceptions

---

**September 2002**

---

Table 1

--Nevada figures are annualized projections.

--"Assault" does not include simple assaults to allow direct comparison between the Nevada rate and the National rate for this Index offense. See Table 8 for a count of all assaults.

Table 2

--The LV Fire Department reports "Arson" offenses for the City of Las Vegas. The population figure for this agency represents jurisdiction and is not added to the county total. Similarly, the School District Police Departments in Clark and Washoe Counties are not added to county population estimates as they represent persons served (student enrollment plus staff.)

--Assault data in this table includes ALL assaults (aggravated and simple) reported for the current month.

--County crime rates are calculated following subtraction of populations of jurisdictions failing to report.

Table 3

-- In the "Nevada vs National Index Crime and Clearance Rates" sections, the "Assaults" numbers do not include simple assaults following FBI guidelines. Therefore, they may be compared directly to National rates.

-- National crime rate figures are the latest available for comparative use (2000). Nevada figures are annualized projections.

Table 13

--At various times, property values recovered will exceed values stolen for the current reporting period.

**General Notes:**

■ The following agency(ies) was unable to submit reports for this month: All agencies reported.

-- Any late reports not submitted in time for this publication will be incorporated in to the year-to-date totals in subsequent reports.