

UNIFORM CRIME REPORTING PROGRAM
UCR STATISTICAL DATA VERIFICATION FORM

As an agency administrator or designee for the _____, I have
(Name of Agency)
reviewed the UCR monthly statistics for **October 2002** which includes all UCR data submitted
year to date. Based upon my or my designee's review and validation of same, I find that:

All data contained in the report for my agency is accurate and complete and may be
released and made part of UCR publications for future distribution to the public and other
interested UCR data subscribers.

Data contained in the report is inaccurate or incomplete and may not be published or
released at this time. (If this choice is selected, please provide the reason in the space
provided below.)

Reason: _____

The corrected data will be supplied to the UCR Program by: _____.
(Date)

This document must be signed and mailed to the Uniform Crime Reporting Program, 808 W.
Nye Lane, Carson City, Nevada 89703 or faxed to (775) 687-1843 by **June 30, 2003**.

Signature of Agency Administrator (or designee)

Name/Title of Agency Administrator (print or type)

Agency's Name/Location

Date

Department of Public Safety
Nevada Highway Patrol
Records and Identification Bureau

Monthly Report



OCTOBER

2002

**Richard Kirkland, Director
Department of Public Safety**

**Colonel David Hosmer, Chief
Nevada Highway Patrol**

**Daryl Riersgard, Manager
Records and Identification Bureau**

Tenna Herman, Management Analyst I

**Prepared by:
Records and Identification Bureau
Uniform Crime Reporting
808 W. Nye Lane
Carson City, Nevada 89703
(775) 687-1600**

Nevada UCR Definitions / Explanations

Uniform Crime Reporting Program

The UCR program is a nationwide, cooperative, statistical effort by over 17,000 city, county and state law enforcement agencies that voluntarily report data on crimes brought to their attention. Law enforcement agencies active in the national program represent 95% of the total population of the United States. While the program's primary objective is to generate a reliable set of crime statistics for use in law enforcement administration, operation and management, its data has over the years become one of the country's leading social indicators.

In Nevada, 36 agencies are currently reporting UCR data to the statewide program representing nearly 99% of its population. Rather than submitting directly to the FBI, local agencies must submit crime data to the state UCR Repository, which compiles, analyzes and submits copies of the reports to the FBI. The Nevada UCR Program prides itself on its responsiveness to local contributing agencies that previously received limited feedback for their efforts. The Nevada program is also responsible for producing and distributing periodic reports of the information contained in its database. As its database has grown, the program's utility has become even more apparent.

Eight offenses serve as an index for gauging fluctuations in overall volumes and rates of crime. Known collectively as the " Crime Index, " these offenses include *the violent crimes of murder, rape, robbery and assault and the property crimes of burglary, larceny, motor vehicle theft and arson*. These offenses were selected as a grouped measuring device because they represent the most common crime problems. They are all serious crimes; either by their very nature or due to the volume and frequency with which they occur.

Index Crimes Definitions

Murder and Non-negligent Manslaughter

Murder and non negligent manslaughter, as defined in the Uniform Crime Reporting Program, is the willful (non-negligent) killing of a human being by another.

The classification of this offense, as for all other Crime Index offenses, is based solely on police investigation as opposed to the determination of a court, medical examiner, coroner, jury or other judicial entity. Not included in the count for this offense classification are deaths caused by negligence, suicide or accident, justifiable homicides and attempts to murder or assaults to murder. These are scored as aggravated assaults.

Nevada UCR Definitions / Explanations

Forcible Rape

Forcible rape, as defined in the program, is the carnal knowledge of a female forcibly and against her will. Assaults or attempts to commit rape by force or threat of force are also included; however, statutory rape (without force) and other sex offenses are excluded.

Robbery

Robbery is the taking or attempting to take anything of value from the care, custody or control of a person or persons by force or threat of force or violence and/or by putting the victim in fear.

Aggravated Assault

Aggravated assault is an unlawful attack by one person upon another for the purpose of inflicting severe or aggravated bodily injury. This type of assault is usually accompanied by the use of a weapon or by means likely to produce death or great bodily harm. Attempts are included since it is not necessary that an injury result when a gun, knife or other weapon is used which could and probably would result in serious personal injury if the crime were successfully completed

Burglary

The Uniform Crime Reporting Program defines burglary as the unlawful entry of a structure to commit a felony or theft. The use of force to gain entry is not required to classify an offense as burglary. Burglary in this program is categorized into three sub classifications: forcible entry, unlawful entry where no force is used and attempted forcible entry.

Larceny-Theft

Larceny-theft is the unlawful taking, carrying, leading, or riding away of property from the possession or constructive possession of another. It includes crimes such as shoplifting, pocket picking, purse-snatching, thefts from motor vehicles, thefts of motor vehicle parts and accessories, and bicycle thefts, etc., in which no use of force, violence, or fraud occurs. In the UCR Program, this crime category does not include embezzlement, "con" games, forgery, and worthless checks. Motor vehicle theft is also excluded from this category inasmuch as it is a separate Crime Index offense.

Motor Vehicle Theft

Defined as the theft or attempted theft of a motor vehicle, this offense category includes the stealing of automobiles, trucks, buses, motorcycles, motor scooters, snowmobiles, etc. The definition excludes the taking of a motor vehicle for temporary use by those persons having lawful access.

Nevada UCR

Definitions / Explanations

Arson

Arson is defined by the Uniform Crime Reporting Program as any willful or malicious burning or attempt to burn, with or without intent to defraud, a dwelling house, public building, a motor vehicle or aircraft, personal property of another, etc. Only fires determined through investigation to have been willfully or maliciously set are classified as arsons. Fires of suspicious or unknown origins are excluded.

Population Estimates

State, county and incorporated city population estimates are prepared and reviewed prior to the end of each calendar year for certification by the governor by March 1. The Nevada Department of Taxation and Nevada State Demographer, Bureau of Business and Economic Research, College of Business Administration, University of Nevada, Reno, prepares these estimates.

Crime Rates

Crime rates involve the number of Index Crimes per unit of population, usually per 100,000 persons. Because Nevada has such a low population, a rate per 1,000 persons is used to reflect a more realistic volume. No attempt is made to incorporate transient populations or other factors that contribute to the ratio and types of crime in given areas. Any effort to make comparisons of crime rates between areas should be tempered by these population and environmental variables.

Crime rates are one of the most meaningful statistical elements. Computation of crime rates per 1,000 population is achieved by dividing the community's population by 1,000, then dividing the number of offenses in each class by that number. The answer is the number of offenses per 1,000 population and is the crime rate for that particular offense. In Table 2, the County Total Crime Rate is computed after subtracting the population figure for all non-reporting agencies for the current month.

The index offense "Aggravated Assault" is an item of special interest to users of Nevada's UCR report. In Tables 1 & 3, where Nevada and National crime rates are compared, "simple assaults" are subtracted from the total of all assaults following FBI UCR rules, thus allowing for direct comparison. However, total assaults (simple and aggravated) are also presented in the Nevada report. This is because the Nevada UCR staff believes this figure is an important indicator of risk for citizens and it presents a more balanced picture of this portion of the crime index to law enforcement personnel.

The Federal Bureau of Investigation, Uniform Crime Reporting Section, publishes national rates.

Clearance Rates

The percentage of crimes cleared is obtained by dividing the number of offenses cleared by the number of offenses known. This number is then multiplied by 100.

Nevada--Statewide Summary--UCR Index Crimes

OCTOBER 2002

Offense	Crimes this Month	# Cleared this Month	% Cleared this Month	Crimes this YTD	# Cleared this YTD	% Cleared this YTD	October Crimes 2001	October Cleared 2001	% Cleared 2001	NV Rate / 1,000 (Proj) *	2001 NV Rate / 1,000	2000 Ntl. Rate / 1,000
Murder	14	7	50	157	91	58	22	10	45	0.09	0.07	0.55
Rape	108	45	42	789	301	38	87	26	30	0.43	0.44	0.32
Robbery	451	74	16	4,111	844	21	410	71	17	2.39	2.31	1.45
Assault *	570	259	45	6,413	3,140	49	372	182	49	3.07	2.51	3.24
Burglary	1,644	350	21	15,776	3,677	23	1,524	398	26	8.57	8.91	7.28
Larceny	4,448	1,064	24	39,828	9,979	25	3,737	1,046	28	21.81	22.43	24.75
MV Theft	1,670	253	15	14,318	2,146	15	1,139	122	11	7.11	6.69	4.14
Arson	70	13	19	529	81	15	47	10	21	0.26	0.30	0.37
Total	8,975	2,065	23	81,921	20,259	25	7,338	1,865	25	43.72	43.65	42.10

* The projected Crime Rate for Assaults is computed after subtracting Simple Assaults from the total for all Assaults following FBI guidelines. Therefore, this rate may be compared directly to the National Rate. See Table 3 and the "Footnotes/Exceptions page for further information.

Nevada UCR - - Monthly Crime/ Clearance Summary - - All Crimes

Contributing Agency	Est. Pop	Murder		Rape		Robbery		Assault		Burglary		Larceny		MV Theft		Arson		Total Crimes	Crime Rate	Clearances	Clearance Rate
Carson County																		October 2002			
Carson SO	54,171	0	0	0	0	4	1	79	47	33	7	102	20	9	3	4	0	231	4.26	78	33.8%
County Total	54,171	0	0	0	0	4	1	79	47	33	7	102	20	9	3	4	0	231	4.26	78	33.8%
Churchill County																					
Churchill SO	16,766	0	0	1	0	0	0	22	16	5	4	9	0	1	0	0	0	38	2.27	20	52.6%
Fallon PD	8,162	0	0	1	0	0	0	23	9	3	0	59	8	0	0	0	0	86	10.54	17	19.8%
County Total	24,928	0	0	2	0	0	0	45	25	8	4	68	8	1	0	0	0	124	4.97	37	29.8%
Clark County																					
Boulder PD	14,760	0	0	0	0	0	0	8	8	11	0	13	1	3	3	0	0	35	2.37	12	34.3%
Clark Co. Schools PD*	267,697	0	0	0	0	2	1	120	75	24	8	79	16	4	0	12	4	241	0.90	104	43.2%
Henderson	196,780	1	1	12	5	18	7	171	120	114	17	241	37	120	4	6	2	683	3.47	193	28.3%
LV Metro PD	1,134,478	12	6	66	28	349	44	1,793	713	975	237	2,345	618	1,193	187	12	0	6,745	5.95	1,833	27.2%
LV Fire Dept*	506,111															9	2	9	0.02	2	22.2%
Mesquite	11,940	0	0	0	0	2	0	26	21	0	0	21	9	2	0	0	0	51	4.27	30	58.8%
North Las Vegas PD	127,897	0	0	7	4	31	5	238	115	140	13	276	68	131	15	6	0	829	6.48	220	26.5%
UNLV PD*	24,500	0	0	0	0	0	0	6	5	9	0	27	0	18	1	1	0	61	2.49	6	9.8%
County Total	1,485,855	13	7	85	37	402	57	2,362	1,057	1,273	275	3,002	749	1,471	210	46	8	8,654	5.82	2,400	27.7%
Douglas County																					
Douglas SO	43,450	0	0	0	0	1	1	31	20	15	2	54	22	2	2	0	0	103	2.37	47	45.6%
County Total	43,450	0	0	0	0	1	1	31	20	15	2	54	22	2	2	0	0	103	2.37	47	45.6%

*Population figure not included in county total
Table 2

Nevada UCR - - Monthly Crime/ Clearance Summary - - All Crimes

Contributing Agency	Est. Pop	Murder		Rape		Robbery		Assault		Burglary		Larceny		MV Theft		Arson		Total Crimes	Crime Rate	Clearances	Clearance Rate
October 2002																					
Elko County																					
Elko SO	22,795	0	0	1	0	0	0	5	7	15	2	13	3	1	0	0	0	35	1.54	12	34.3%
Carlin PD	2,166	0	0	0	0	1	0	1	1	2	0	12	0	0	0	0	0	16	7.39	1	6.3%
Elko PD	17,093	1	0	0	0	0	0	17	13	14	1	35	7	3	1	1	0	71	4.15	22	31.0%
Wendover PD	4,614	0	0	0	0	0	0	5	3	1	0	8	3	0	0	0	0	14	3.03	6	42.9%
County Total	46,668	1	0	1	0	1	0	28	24	32	3	68	13	4	1	1	0	136	2.91	41	30.1%
Esmeralda County																					
Esmeralda SO	1,038	0	0	0	0	0	0	0	0	0	0	0	0	0	0	0	0	0	0.00	0	0.0%
County Total	1,038	0	0	0	0	0	0	0	0	0	0	0	0	0	0	0	0	0	0.00	0	0.0%
Eureka County																					
Eureka SO	1,506	0	0	0	0	0	0	0	0	1	0	3	0	1	1	0	0	5	3.32	1	20.0%
County Total	1,506	0	0	0	0	0	0	0	0	1	0	3	0	1	1	0	0	5	3.32	1	20.0%
Humboldt County																					
Humboldt SO	9,163	0	0	0	0	0	0	6	6	0	0	1	0	2	2	0	0	9	0.98	8	88.9%
Winnemucca PD	7,001	0	0	0	0	0	0	8	6	2	0	10	5	0	0	0	0	20	2.86	11	55.0%
County Total	16,164	0	0	0	0	0	0	14	12	2	0	11	5	2	2	0	0	29	1.79	19	65.5%

*Population figure not included in county total
Table 2

Nevada UCR - - Monthly Crime/ Clearance Summary - - All Crimes

Contributing Agency	Est. Pop	Murder	Rape	Robbery	Assault	Burglary	Larceny	MV Theft	Arson	Total Crimes	Crime Rate	Clearances	Clearance Rate
										October 2002			
Lander County													
Lander SO	5,761	0 0	0 0	0 0	3 0	3 0	1 0	1 0	0 0	8	1.39	0	0.0%
County Total	5,761	0 0	0 0	0 0	3 0	3 0	1 0	1 0	0 0	8	1.39	0	0.0%
Lincoln County													
Lincoln SO	3,861	0 0	0 0	0 0	0 0	2 1	1 0	2 1	0 0	5	1.30	2	40.0%
County Total	3,861	0 0	0 0	0 0	0 0	2 1	1 0	2 1	0 0	5	1.30	2	40.0%
Lyon County													
Lyon SO	34,440	0 0	0 0	0 0	42 42	16 3	32 6	3 2	1 0	94	2.73	53	56.4%
Yerington PD	2,889	0 0	0 0	0 0	0 0	1 1	4 4	0 0	0 0	5	1.73	5	100.0%
County Total	37,329	0 0	0 0	0 0	42 42	17 4	36 10	3 2	1 0	99	2.65	58	58.6%
Mineral County													
Mineral SO	4,743	0 0	0 0	0 0	2 2	1 0	0 0	0 0	1 0	4	0.84	2	50.0%
County Total	4,743	0 0	0 0	0 0	2 2	1 0	0 0	0 0	1 0	4	0.84	2	50.0%
Nye County													
Nye SO	34,384	0 0	0 0	1 1	49 49	41 24	43 20	6 5	3 3	143	4.16	102	71.3%
County Total	34,384	0 0	0 0	1 1	49 49	41 24	43 20	6 5	3 3	143	4.16	102	71.3%

*Population figure not included in county total
Table 2

Nevada UCR - - Monthly Crime/ Clearance Summary - - All Crimes

Contributing Agency	Est. Pop	Murder		Rape		Robbery		Assault		Burglary		Larceny		MV Theft		Arson		Total Crimes	Crime Rate	Clearances	Clearance Rate
Pershing County																		October 2002			
Pershing SO	4,729	0	0	0	0	0	0	1	0	4	0	4	2	1	0	0	0	10	2.11	2	20.0%
Lovelock PD	2,144	0	0	0	0	0	0	3	3	3	1	1	0	0	0	0	0	7	3.26	4	57.1%
County Total	6,873	0	0	0	0	0	0	4	3	7	1	5	2	1	0	0	0	17	2.47	6	35.3%
Storey County																					
Storey	3,714	0	0	0	0	0	0	0	0	1	1	0	0	0	0	0	0	1	0.27	1	100.0%
County Total	3,714	0	0	0	0	0	0	0	0	1	1	0	0	0	0	0	0	1	0.27	1	100.0%
Washoe County																					
Washoe SO	94,634	0	0	0	0	1	1	66	25	30	0	78	21	21	2	1	0	197	2.08	49	24.9%
Reno PD	186,883	0	0	16	3	34	9	331	129	111	8	725	147	113	7	11	1	1,341	7.18	304	22.7%
Sparks PD	71,753	0	0	3	5	7	4	97	89	59	19	187	40	27	16	0	0	380	5.30	173	45.5%
UNR PD*	15,000	0	0	1	0	0	0	4	2	7	0	22	0	1	0	0	0	35	2.33	2	5.7%
Washoe Co Schl PD*	57,592	0	0	0	0	0	0	0	0	0	1	28	6	2	1	1	0	31	0.54	8	25.8%
TMCC PD*	12,311	0	0	0	0	0	0	2	0	0	0	0	0	0	0	0	0	2	0.16	0	0.0%
County Total	353,270	0	0	20	8	42	14	500	245	207	28	1,040	214	164	26	13	1	1,986	5.62	536	27.0%
White Pine County																					
White Pine SO	8,783	0	0	0	0	0	0	7	5	1	0	14	1	3	0	1	1	26	2.96	7	26.9%
County Total	8,783	0	0	0	0	0	0	7	5	1	0	14	1	3	0	1	1	26	2.96	7	26.9%
Grand Total	2,132,498	14	7	108	45	451	74	3,166	1,531	1,644	350	4,448	1,064	1,670	253	70	13	11,571	5.43	3,337	28.8%

*Population figure not included in county total
Table 2

Nevada UCR - - Monthly Crimes/Clearances Summary - - Index Crimes

OCTOBER 2002

Est. Pop	Murder		Rape		Robbery		Assault		Burglary		Larceny		MV Theft		Arson		Total Crimes	Crime Rate	Total Clear	Clearance Rate	
Statewide Totals																					
(Crimes/Clearances)	2,132,498	14	7	108	45	451	74	570	259	1644	350	4448	1064	1670	253	70	13	8975	4.21	2065	23.01

Nevada (Projected 2002) vs National (2000) Index Crime Rates

(per 1,000 population)

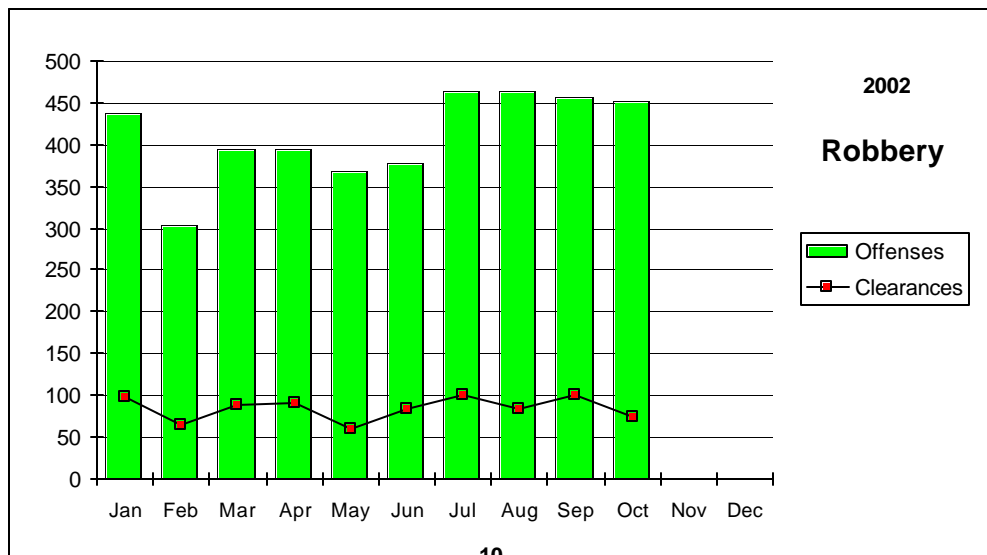
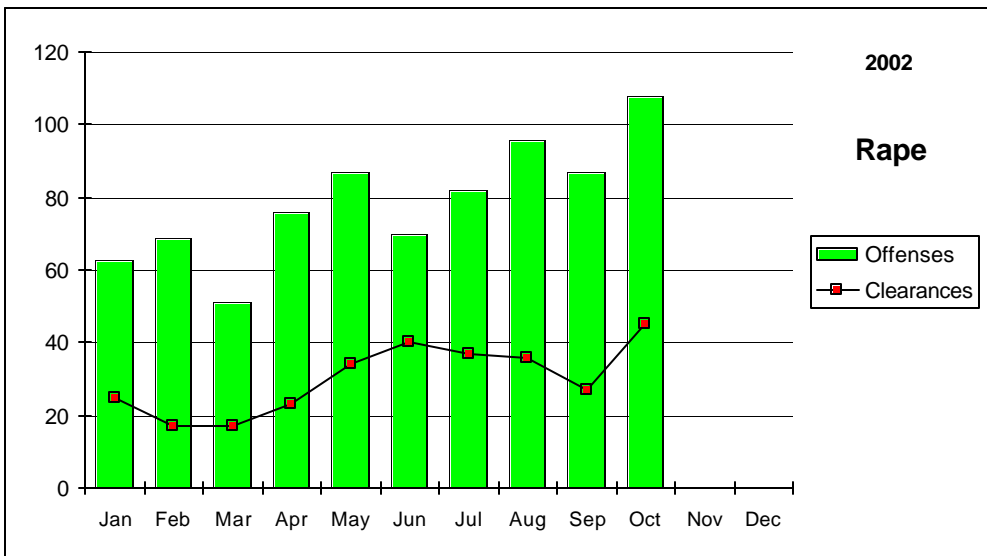
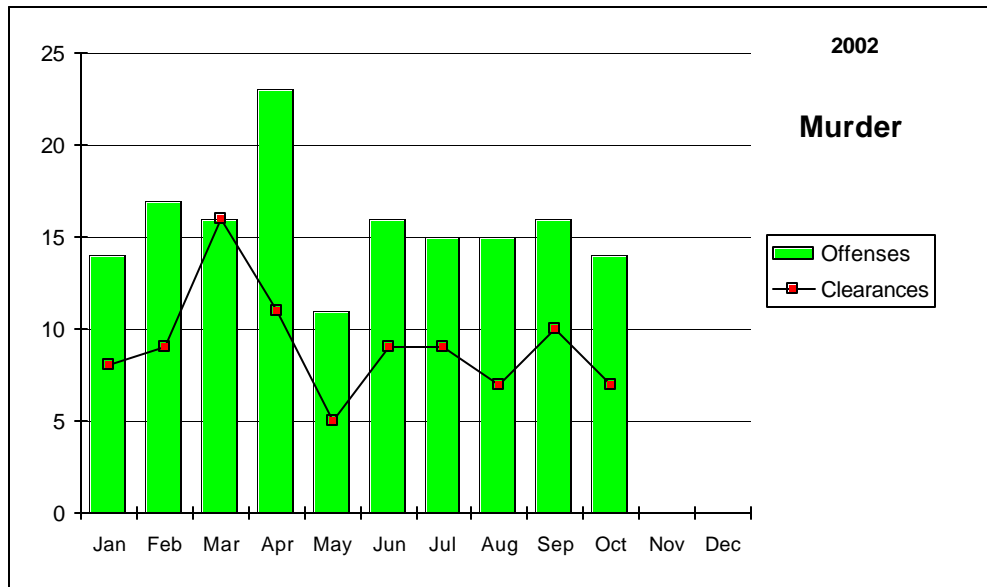
	Murder	Rape	Robbery	Assault	Burglary	Larceny	MV Theft	Arson	Crime Rate
Nevada	0.09	0.44	2.31	3.61	8.88	22.41	8.06	0.30	46.10
National	0.55	0.32	1.45	3.24	7.28	24.75	4.14	0.37	42.10

Nevada (Projected 2002) vs National (2000) Crime Clearance Rates

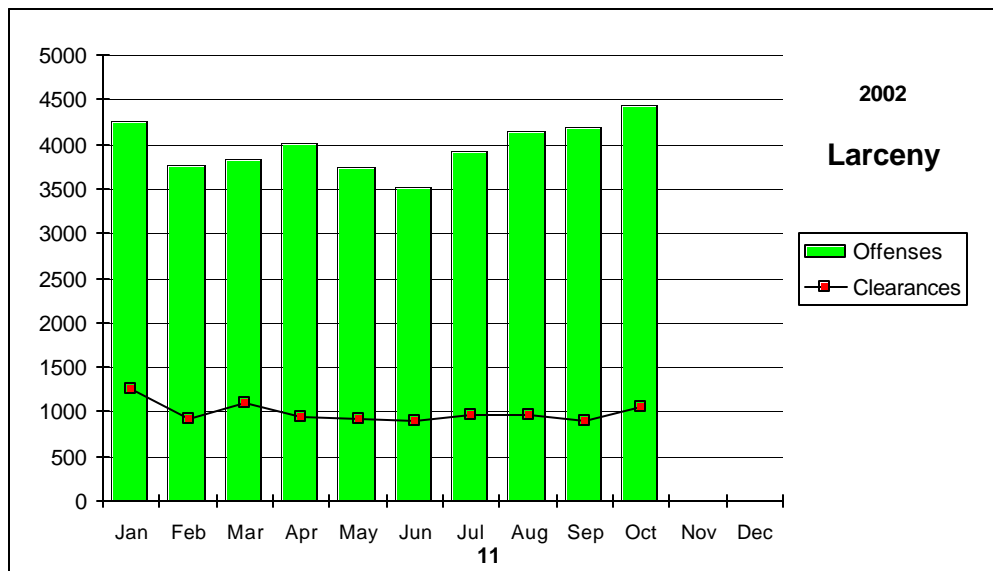
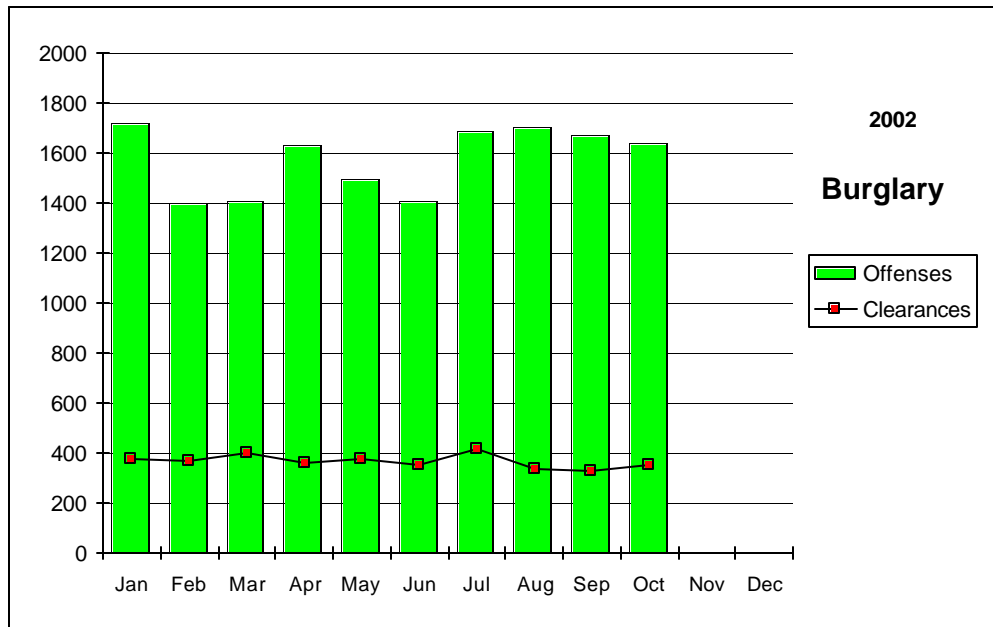
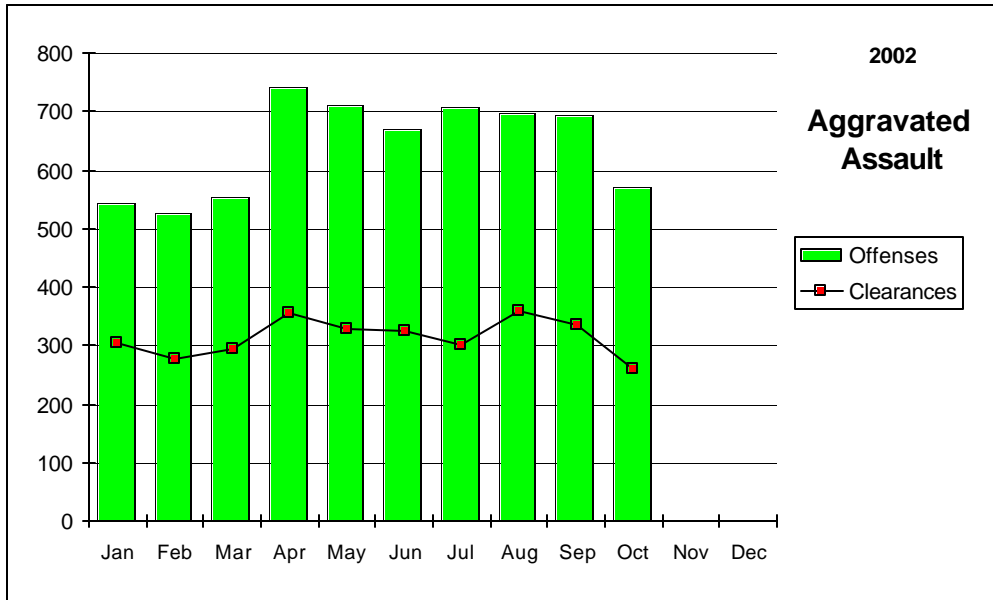
(by Percent)

	Murder	Rape	Robbery	Assault	Burglary	Larceny	MV Theft	Arson	Clear Rate
Nevada	57.96	38.15	20.53	48.96	23.31	25.06	14.99	15.31	24.93
National	63.10	46.90	25.70	56.90	13.40	18.20	14.10	16.00	20.50

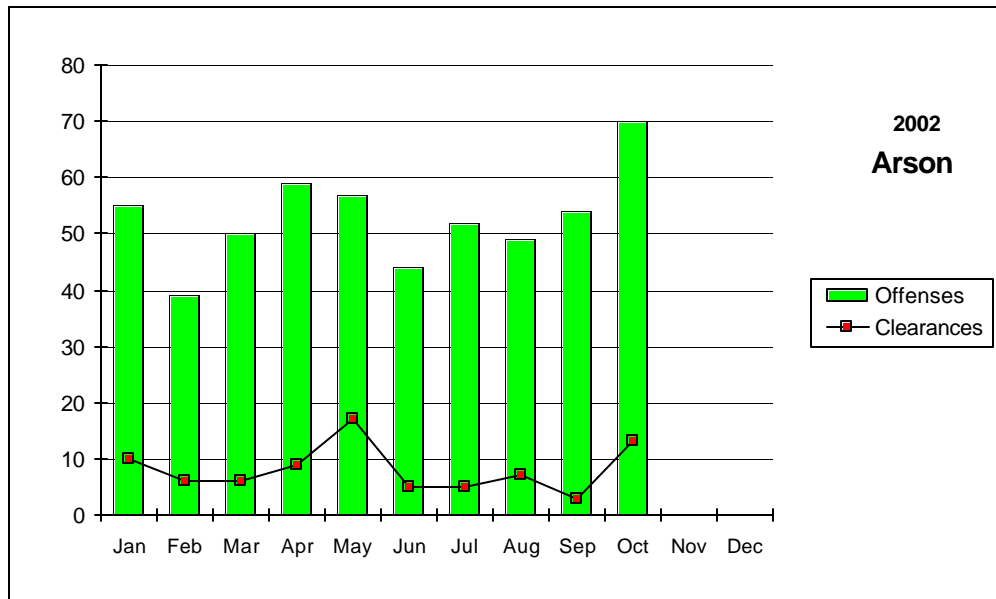
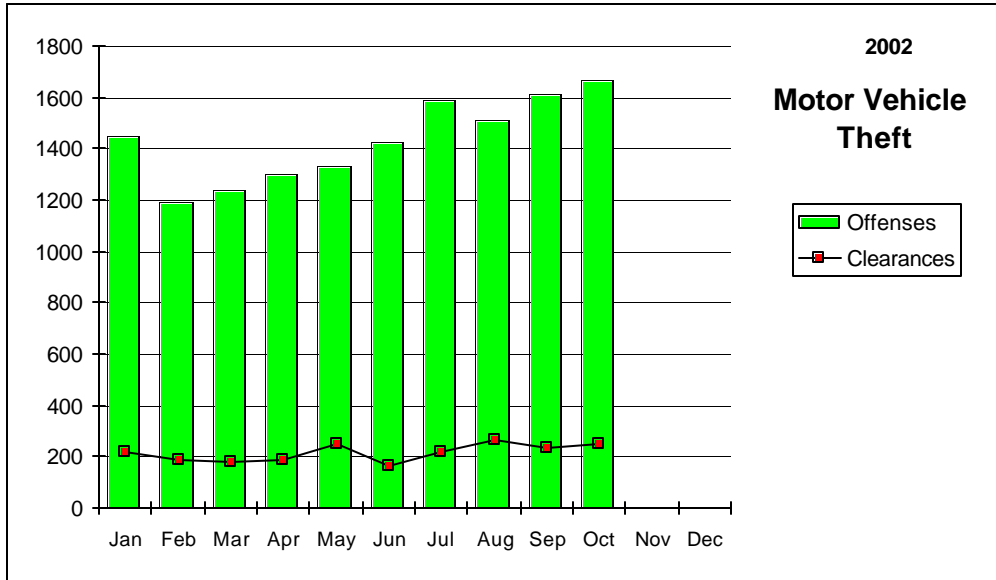
Nevada--Graphic Summary--UCR



Nevada--Graphic Summary--UCR



Nevada--Graphic Summary--UCR



Nevada--Murder--Incidence Level Variation--UCR

October 2002

Agency	October 2002 Offenses	October 2002 Cleared	YTD Offenses	2002 YTD Cleared	October 2001 Offenses	October 2001 Cleared	YTD Offenses	2001 YTD Cleared
Boulder	0	0	0	0	0	0	0	0
Carlin PD	0	0	0	0	0	0	0	0
Carson SO	0	0	0	0	0	0	0	0
Churchill SO	0	0	0	0	0	0	-1	0
Clark Co Schl PD	0	0	0	0	0	0	0	0
Douglas SO	0	0	1	1	0	0	0	0
Elko PD	1	0	1	0	0	0	0	0
Elko SO	0	0	1	1	0	0	2	1
Esmeralda SO	0	0	0	0	0	0	0	0
Eureka SO	0	0	0	0	0	0	0	0
Fallon PD	0	0	0	0	0	0	0	0
Henderson PD	1	1	3	4	0	1	9	7
Humboldt SO	0	0	0	0	0	0	0	0
Lander SO	0	0	0	0	0	0	0	0
Lincoln SO	0	0	0	0	0	0	0	0
Lovelock PD	0	0	0	0	0	0	0	0
LV Fire Dept	0	0	0	0	0	0	0	0
LV Metro	12	6	119	66	12	10	121	83
Lyon SO	0	0	0	0	0	0	1	1
Mesquite PD	0	0	0	0	0	0	0	0
Mineral SO	0	0	1	1	0	0	1	1
NLVPD	0	0	17	4	0	0	20	6
Nye SO	0	0	2	1	0	0	1	1
Pershing SO	0	0	0	0	0	0	1	1
Reno PD	0	0	8	7	1	0	7	5
Sparks PD	0	0	2	5	2	0	3	1
Storey SO	0	0	0	0	0	0	0	0
TMCC PD	0	0	0	0	0	0	0	0
UNLV PD	0	0	0	0	0	0	0	0
UNR PD	0	0	0	0	0	0	0	0
Washoe SO	0	0	1	0	0	0	2	1
Washoe Co Schl PD	0	0	0	0	0	0	0	0
Wendover PD	0	0	1	1	0	0	0	0
White Pine SO	0	0	0	0	1	1	1	1
Winnemucca PD	0	0	0	0	0	0	1	1
Yerington PD	0	0	0	0	0	0	0	0
TOTALS	14	7	157	91	16	12	169	110

Nevada--Rape--Incidence Level Variation--UCR

October 2002

Agency	October 2002 Offenses	October 2002 Cleared	YTD Offenses	2002 YTD Cleared	October 2001 Offenses	October 2001 Cleared	YTD Offenses	2001 YTD Cleared
Boulder	0	0	0	0	0	0	4	4
Carlin PD	0	0	0	0	0	0	0	0
Carson SO	0	0	29	6	1	0	28	3
Churchill SO	1	0	16	11	2	5	23	18
Clark Co Schl PD	0	0	0	0	0	0	0	0
Douglas SO	0	0	0	0	0	0	0	0
Elko PD	0	0	3	3	0	1	3	2
Elko SO	1	0	5	0	0	0	3	1
Esmeralda SO	0	0	0	0	0	0	0	0
Eureka SO	0	0	0	0	0	0	0	0
Fallon PD	1	0	2	1	0	0	0	0
Henderson PD	12	5	91	32	7	0	85	37
Humboldt SO	0	0	0	0	0	0	3	1
Lander SO	0	0	0	0	1	0	4	1
Lincoln SO	0	0	0	0	0	0	0	0
Lovelock PD	0	0	2	1	0	0	1	0
LV Fire Dept	0	0	0	0	0	0	0	0
LV Metro	66	28	416	147	20	6	403	140
Lyon SO	0	0	6	1	1	0	10	3
Mesquite PD	0	0	0	0	0	0	0	0
Mineral SO	0	0	1	1	2	0	5	3
NLVPD	7	4	42	22	2	0	41	21
Nye SO	0	0	0	0	0	0	0	0
Pershing SO	0	0	3	1	0	0	2	1
Reno PD	16	3	112	16	0	1	91	22
Sparks PD	3	5	45	51	6	0	43	26
Storey SO	0	0	1	1	0	0	0	0
TMCC PD	0	0	0	0	0	0	0	0
UNLV PD	0	0	2	0	0	0	2	2
UNR PD	1	0	2	0	0	0	0	0
Washoe SO	0	0	6	2	2	1	28	12
Washoe Co Schl PD	0	0	0	0	0	0	0	0
Wendover PD	0	0	2	2	1	0	2	1
White Pine SO	0	0	1	1	1	1	2	2
Winnemucca PD	0	0	2	2	0	0	5	3
Yerington PD	0	0	0	0	0	0	0	0
TOTALS	108	45	789	301	46	15	788	303

Nevada--Robbery--Incidence Level Variation--UCR

October 2002

Agency	October 2002 Offenses	October 2002 Cleared	YTD Offenses	2002 YTD Cleared	October 2001 Offenses	October 2001 Cleared	YTD Offenses	2001 YTD Cleared
Boulder	0	0	2	1	0	0	3	3
Carlin PD	1	0	1	0	0	0	1	1
Carson SO	4	1	26	11	4	2	28	12
Churchill SO	0	0	1	0	0	0	0	0
Clark Co Schl PD	2	1	16	6	2	0	17	4
Douglas SO	1	1	9	6	3	1	11	5
Elko PD	0	0	5	0	1	1	7	1
Elko SO	0	0	3	2	0	0	1	1
Esmeralda SO	0	0	0	0	0	0	0	0
Eureka SO	0	0	0	0	0	0	0	0
Fallon PD	0	0	4	1	1	1	3	2
Henderson PD	18	7	154	39	14	3	163	36
Humboldt SO	0	0	0	0	0	0	0	0
Lander SO	0	0	1	0	0	0	0	0
Lincoln SO	0	0	1	0	0	0	0	0
Lovelock PD	0	0	0	0	0	0	0	0
LV Fire Dept	0	0	0	0	0	0	0	0
LV Metro	349	44	3043	563	366	62	2905	474
Lyon SO	0	0	1	0	1	0	5	0
Mesquite PD	2	0	3	1	0	0	5	4
Mineral SO	0	0	1	1	1	0	1	0
NLVPD	31	5	373	65	38	9	332	64
Nye SO	1	1	14	8	1	1	4	4
Pershing SO	0	0	1	0	0	0	0	0
Reno PD	34	9	352	95	50	11	328	86
Sparks PD	7	4	80	38	5	1	66	28
Storey SO	0	0	0	0	0	0	0	0
TMCC PD	0	0	0	0	0	0	0	0
UNLV PD	0	0	4	1	1	0	5	2
UNR PD	0	0	0	0	0	0	0	0
Washoe SO	1	1	11	5	6	0	21	7
Washoe Co Schl PD	0	0	1	0	0	0	0	0
Wendover PD	0	0	1	0	0	0	2	2
White Pine SO	0	0	2	1	0	0	0	0
Winnemucca PD	0	0	1	0	0	0	0	0
Yerington PD	0	0	0	0	0	0	0	0
TOTALS	451	74	4111	844	494	92	3908	736

Nevada--Aggravated Assault--Incidence Level Variation--UCR

October 2002

Agency	October 2002 Offenses	October 2002 Cleared	2002 YTD Offenses	2002 YTD Cleared	October 2001 Offenses	October 2001 Cleared	2001 YTD Offenses	2001 YTD Cleared
Boulder	4	4	47	35	9	9	53	39
Carlin PD	1	1	9	7	3	1	8	3
Carson SO	37	25	186	95	27	11	201	102
Churchill SO	5	2	35	27	2	2	27	17
Clark Co SchI PD	0	0	28	21	5	5	33	18
Douglas SO	3	2	37	22	3	3	37	26
Elko PD	0	0	18	9	0	0	22	10
Elko SO	3	3	18	11	2	2	23	7
Esmeralda SO	0	0	1	1	0	0	4	4
Eureka SO	0	0	5	2	0	0	14	7
Fallon PD	2	0	13	7	0	0	10	5
Henderson PD	8	4	117	100	19	12	188	105
Humboldt SO	3	3	46	29	4	4	40	31
Lander SO	3	0	31	16	6	7	31	11
Lincoln SO	0	0	2	1	0	0	6	5
Lovelock PD	1	1	4	3	0	0	9	8
LV Fire Dept	0	0	0	0	0	0	0	0
LV Metro	317	115	3800	1559	363	147	2687	1031
Lyon SO	7	7	52	49	5	5	61	59
Mesquite PD	0	0	6	6	0	0	9	7
Mineral SO	0	0	3	3	3	2	11	9
NLVPD	61	30	666	362	70	39	711	350
Nye SO	11	11	93	81	8	8	72	65
Pershing SO	0	0	9	7	2	2	20	5
Reno PD	79	29	809	420	66	22	526	211
Sparks PD	12	12	162	153	16	16	163	121
Storey SO	0	0	25	10	1	0	30	22
TMCC PD	0	0	0	0	0	0	0	0
UNLV PD	3	3	6	5	0	0	4	4
UNR PD	0	0	2	2	1	0	4	0
Washoe SO	6	6	131	56	21	10	126	65
Washoe Co SchI PD	0	0	5	5	0	0	9	10
Wendover PD	0	0	10	8	0	0	5	5
White Pine SO	2	1	21	18	2	2	26	20
Winnemucca PD	2	0	8	6	1	1	8	8
Yerington PD	0	0	8	4	0	0	3	2
TOTALS	570	259	6413	3140	639	310	5181	2392

Nevada--All Assaults--Incidence Level Variation--UCR

October 2002

Agency	October 2002 Offenses	October 2002 Cleared	2002 YTD Offenses	2002 YTD Cleared	October 2001 Offenses	October 2001 Cleared	2001 YTD Offenses	2001 YTD Cleared
Boulder	8	8	138	45	27	27	148	89
Carlin PD	1	1	17	14	3	1	14	8
Carson SO	79	47	762	413	79	36	699	360
Churchill SO	22	16	193	150	22	20	206	154
Clark Co Schl PD	120	75	710	432	5	5	537	265
Douglas SO	31	20	397	309	42	36	409	352
Elko PD	17	13	209	118	13	12	255	178
Elko SO	5	7	83	56	7	6	58	22
Esmeralda SO	0	0	3	3	0	0	5	5
Eureka SO	0	0	10	4	0	0	17	10
Fallon PD	23	9	177	102	15	8	176	108
Henderson PD	171	120	1810	1402	183	130	1917	1346
Humboldt SO	6	6	51	33	4	4	48	34
Lander SO	3	0	48	23	7	7	65	38
Lincoln SO	0	0	18	12	8	2	24	11
Lovelock PD	3	3	51	49	8	9	44	37
LV Fire Dept	0	0	0	0	0	0	0	0
LV Metro	1793	713	19656	8394	1782	773	16800	7637
Lyon SO	42	42	383	375	27	26	328	318
Mesquite PD	26	21	223	160	11	8	110	101
Mineral SO	2	2	28	28	11	6	56	40
NLVPD	238	115	2344	1367	234	128	2454	1289
Nye SO	49	49	556	511	59	59	529	522
Pershing SO	1	0	24	14	5	4	46	19
Reno PD	331	129	3443	1706	350	135	3017	1391
Sparks PD	97	89	1125	1006	124	106	1228	1009
Storey SO	0	0	25	10	1	0	33	24
TMCC PD	2	0	4	0	0	0	1	1
UNLV PD	6	5	19	16	3	2	35	28
UNR PD	4	2	13	10	2	0	48	13
Washoe SO	66	25	733	479	96	48	737	488
Washoe Co Schl PD	0	0	181	171	31	31	222	220
Wendover PD	5	3	45	33	4	2	61	52
White Pine SO	7	5	70	56	3	3	67	50
Winnemucca PD	8	6	82	74	10	9	96	94
Yerington PD	0	0	10	5	0	0	3	2
TOTALS	3166	1531	33641	17580	3176	1643	30493	16315

Nevada--Burglary--Incidence Level Variation--UCR

October 2002

Agency	October 2002 Offenses	October 2002 Cleared	YTD Offenses	2002 YTD Cleared	October 2001 Offenses	October 2001 Cleared	YTD Offenses	2001 YTD Cleared
Boulder	11	0	70	10	17	17	144	57
Carlin PD	2	0	11	0	0	0	3	1
Carson SO	33	7	333	50	22	3	307	35
Churchill SO	5	4	52	17	6	1	44	12
Clark Co SchI PD	24	8	249	37	47	8	287	46
Douglas SO	15	2	169	40	16	7	163	51
Elko PD	14	1	125	29	21	8	111	31
Elko SO	15	2	110	21	6	0	89	9
Esmeralda SO	0	0	2	1	0	0	2	0
Eureka SO	1	0	3	0	0	0	5	1
Fallon PD	3	0	44	6	6	1	46	7
Henderson PD	114	17	1244	180	135	17	1158	197
Humboldt SO	0	0	36	7	3	1	23	3
Lander SO	3	0	30	4	7	0	24	3
Lincoln SO	2	1	12	3	2	1	9	1
Lovelock PD	3	1	21	14	2	5	31	18
LV Fire Dept	0	0	0	0	0	0	0	0
LV Metro	975	237	9215	2563	940	295	8378	2526
Lyon SO	16	3	129	22	13	1	151	30
Mesquite PD	0	0	14	9	0	0	25	16
Mineral SO	1	0	19	4	6	3	37	8
NLVPD	140	13	1233	110	115	12	1088	101
Nye SO	41	24	349	174	26	15	333	205
Pershing SO	4	0	17	0	1	0	13	2
Reno PD	111	8	1086	117	109	8	1221	173
Sparks PD	59	19	577	174	61	11	478	144
Storey SO	1	1	10	2	0	0	13	0
TMCC PD	0	0	7	0	2	0	7	0
UNLV PD	9	0	69	3	6	0	61	3
UNR PD	7	0	30	0	6	1	48	3
Washoe SO	30	0	350	31	35	2	280	32
Washoe Co SchI PD	0	1	8	1	0	0	10	1
Wendover PD	1	0	26	9	3	0	20	4
White Pine SO	1	0	28	1	3	0	23	1
Winnemucca PD	2	0	61	16	5	0	30	5
Yerington PD	1	1	37	22	2	0	25	11
TOTALS	1644	350	15776	3677	1623	417	14687	3737

Nevada--Larceny--Incidence Level Variation--UCR

October 2002

Agency	October 2002 Offenses	October 2002 Cleared	YTD Offenses	2002 YTD Cleared	October 2001 Offense	October 2001 Cleared	YTD Offenses	2001 YTD Cleared
Boulder	13	1	123	14	9	9	108	48
Carlin PD	12	0	47	6	3	2	37	4
Carson SO	102	20	1033	131	122	9	1016	108
Churchill SO	9	0	133	26	16	4	121	25
Clark Co SchI PD	79	16	603	69	81	16	579	71
Douglas SO	54	22	541	172	58	16	498	153
Elko PD	35	7	359	65	60	7	429	50
Elko SO	13	3	94	15	18	3	98	8
Esmeralda SO	0	0	2	0	0	0	0	0
Eureka SO	3	0	13	3	1	0	10	2
Fallon PD	59	8	362	52	33	7	292	62
Henderson PD	241	37	2182	503	206	45	2421	528
Humboldt SO	1	0	51	12	4	0	41	10
Lander SO	1	0	47	3	9	3	58	10
Lincoln SO	1	0	19	1	2	0	18	0
Lovelock PD	1	0	30	20	5	5	30	19
LV Fire Dept	0	0	0	0	0	0	0	0
LV Metro	2345	618	20495	5882	1877	524	18686	5709
Lyon SO	32	6	311	60	47	5	466	64
Mesquite PD	21	9	129	68	12	5	73	34
Mineral SO	0	0	17	6	0	0	44	5
NLVPD	276	68	2576	577	261	64	2286	567
Nye SO	43	20	500	261	44	30	367	248
Pershing SO	4	2	55	11	4	1	45	12
Reno PD	725	147	6339	1125	706	130	5979	1202
Sparks PD	187	40	2057	599	226	64	2024	540
Storey SO	0	0	30	3	1	0	31	5
TMCC PD	0	0	12	0	0	0	15	0
UNLV PD	27	0	290	13	47	1	266	17
UNR PD	22	0	116	4	6	0	95	0
Washoe SO	78	21	773	143	93	8	734	190
Washoe Co SchI PD	28	6	117	36	3	3	39	19
Wendover PD	8	3	115	25	11	1	99	23
White Pine SO	14	1	103	11	10	2	111	29
Winnemucca PD	10	5	120	39	16	6	109	51
Yerington PD	4	4	34	24	10	0	32	12
TOTALS	4448	1064	39828	9979	4001	970	37257	9825

Nevada--MV Theft--Incidence Level Variation--UCR

October 2002

Agency	October 2002 Offenses	October 2002 Cleared	YTD Offenses	2001 YTD Cleared	October 2001 Offenses	October 2001 Cleared	YTD Offenses	2001 YTD Cleared
Boulder	3	3	23	13	2	2	21	4
Carlin PD	0	0	5	4	2	1	5	2
Carson SO	9	3	106	16	6	2	86	6
Churchill SO	1	0	23	12	0	0	10	3
Clark Co Schl PD	4	0	40	2	3	0	32	3
Douglas SO	2	2	50	39	6	4	39	29
Elko PD	3	1	25	8	8	1	33	5
Elko SO	1	0	15	10	2	1	18	5
Esmeralda SO	0	0	1	1	0	0	0	0
Eureka SO	1	1	1	1	0	0	1	0
Fallon PD	0	0	21	9	1	1	20	5
Henderson PD	120	4	927	65	124	10	746	88
Humboldt SO	2	2	11	7	0	0	4	2
Lander SO	1	0	8	1	0	0	1	1
Lincoln SO	2	1	8	4	0	0	3	3
Lovelock PD	0	0	3	3	0	0	3	1
LV Fire Dept	0	0	0	0	0	0	0	0
LV Metro	1193	187	10176	1569	1034	144	8562	1031
Lyon SO	3	2	39	14	5	2	34	11
Mesquite PD	2	0	34	16	10	1	24	2
Mineral SO	0	0	2	1	0	0	2	2
NLVPD	131	15	1296	97	140	8	1049	76
Nye SO	6	5	61	40	3	3	22	16
Pershing SO	1	0	3	0	1	0	7	5
Reno PD	113	7	922	80	73	10	714	71
Sparks PD	27	16	255	94	36	8	244	85
Storey SO	0	0	5	3	0	0	4	0
TMCC PD	0	0	1	0	0	0	0	0
UNLV PD	18	1	55	3	1	0	28	2
UNR PD	1	0	5	0	1	0	2	0
Washoe SO	21	2	153	22	8	1	137	43
Washoe Co Schl PD	2	1	2	1	0	0	1	0
Wendover PD	0	0	12	5	0	0	4	1
White Pine SO	3	0	7	0	2	0	5	2
Winnemucca PD	0	0	20	5	0	0	17	7
Yerington PD	0	0	3	1	0	0	2	0
TOTALS	1670	253	14318	2146	1468	199	11880	1511

Nevada--Arson--Incidence Level Variation--UCR

October 2002

Agency	October 2002 Offenses	October 2002 Cleared	YTD Offenses	2002 YTD Cleared	October 2001 Offenses	October 2001 Cleared	YTD Offenses	2001 YTD Cleared
Boulder	0	0	3	1	1	0	7	5
Carlin PD	0	0	0	0	0	0	0	0
Carson SO	4	0	14	2	1	1	15	6
Churchill SO	0	0	2	1	1	0	2	1
Clark Co Schl PD	12	4	55	20	3	1	56	14
Douglas SO	0	0	4	3	0	0	0	0
Elko PD	1	0	9	2	1	0	5	2
Elko SO	0	0	1	0	0	0	3	2
Esmeralda SO	0	0	0	0	0	0	0	0
Eureka SO	0	0	1	0	0	0	0	0
Fallon PD	0	0	0	0	0	0	0	0
Henderson PD	6	2	39	9	3	2	30	12
Humboldt SO	0	0	0	0	0	0	1	0
Lander SO	0	0	0	0	0	0	0	0
Lincoln SO	0	0	0	0	0	0	0	0
Lovelock PD	0	0	0	0	0	0	0	0
LV Fire Dept	9	2	124	11	20	0	116	16
LV Metro	12	0	134	0	11	0	115	0
Lyon SO	1	0	3	1	0	0	1	1
Mesquite PD	0	0	0	0	0	0	0	0
Mineral SO	1	0	3	1	1	1	4	2
NLVPD	6	0	53	5	4	0	33	3
Nye SO	3	3	12	7	0	0	6	3
Pershing SO	0	0	0	0	0	0	0	0
Reno PD	11	1	52	9	1	0	41	6
Sparks PD	0	0	0	0	0	0	0	0
Storey SO	0	0	0	0	0	0	0	0
TMCC PD	0	0	0	0	0	0	0	0
UNLV PD	1	0	3	0	0	0	1	0
UNR PD	0	0	1	1	0	0	3	1
Washoe SO	1	0	5	2	0	0	4	0
Washoe CO Scl PD	1	0	4	2	0	0	4	3
Wendover PD	0	0	2	0	0	0	7	3
White Pine SO	1	1	3	2	0	0	4	4
Winnemucca PD	0	0	2	2	0	0	5	1
Yerington PD	0	0	0	0	0	0	0	0
TOTALS	70	13	529	81	47	5	463	85

Nevada--Hate Crimes--UCR

OCTOBER 2002

AGENCY	OFFENSE	LOCATION	BIAS	VICTIM TYPE / NUMBER	OFFENDER RACE / NUMBER
Humboldt Co SO	Aggravated Assault	Field/Woods	Anti-American Indian/ Alaskan Native	Individual/1	White/2
"	Larceny-theft				
Las Vegas Metro PD	Destruction/Damage/Vandalism	Construction Site	Anti-Black	Individual/1	Unknown
Las Vegas Metro PD	Destruction/Damage/Vandalism	Parking Lot/Garage	Anti-Black	Individual/1	Unknown
Las Vegas Metro PD	Destruction/Damage/Vandalism	Residence/Home	Anti-Multi-Racial Group	Individual/1	Unknown

Stolen/Recovered Property Report

October 2002

Property Type	Boulder PD	Carlin PD	Carson SO	Churchill SO	Clark Co Schi PD	Douglas SO	Elko PD	Elko SO	Esmeralda SO
Currency									
Stolen	\$0	\$0	\$4,981	\$70	\$4,522	\$23,185	\$3,162	\$2,539	\$0
Recovered	\$0	\$0	\$473	\$0	\$1,215	\$0	\$320	\$100	\$0
% Recovered	0.0%	0.0%	9.5%	0.0%	26.9%	0.0%	10.1%	3.9%	0.0%
Jewelry									
Stolen	\$0	\$31,573	\$53,049	\$0	\$970	\$10,550	\$5,665	\$600	\$0
Recovered	\$0	\$0	\$0	\$0	\$0	\$900	\$150	\$0	\$0
% Recovered	0.0%	0.0%	0.0%	0.0%	0.0%	8.5%	2.6%	0.0%	0.0%
Clothing									
Stolen	\$0	\$0	\$537	\$40	\$11	\$484	\$1,982	\$650	\$0
Recovered	\$0	\$0	\$0	\$40	\$0	\$17	\$91	\$0	\$0
% Recovered	0.0%	0.0%	0.0%	100.0%	0.0%	3.5%	4.6%	0.0%	0.0%
Motor Vehicle									
Stolen	\$220,000	\$0	\$1,081,241	\$2,000	\$65,000	\$24,475	\$27,725	\$20,000	\$0
Recovered	\$194,300	\$0	\$1,032,334	\$2,000	\$7,000	\$24,475	\$42,000	\$20,000	\$0
% Recovered	88.3%	0.0%	95.5%	100.0%	10.8%	100.0%	151.5%	100.0%	0.0%
Office Equipment									
Stolen	\$0	\$0	\$100	\$0	\$6,100	\$0	\$220	\$2,200	\$0
Recovered	\$0	\$0	\$0	\$0	\$0	\$0	\$0	\$0	\$0
% Recovered	0.0%	0.0%	0.0%	0.0%	0.0%	0.0%	0.0%	0.0%	0.0%
TV, VCR, Camera, Etc.									
Stolen	\$0	\$0	\$33,351	\$280	\$4,520	\$2,487	\$2,485	\$5,840	\$0
Recovered	\$0	\$0	\$0	\$0	\$0	\$0	\$31	\$0	\$0
% Recovered	0.0%	0.0%	0.0%	0.0%	0.0%	0.0%	1.2%	0.0%	0.0%
Firearm									
Stolen	\$1,450	\$0	\$1,535	\$322	\$0	\$2,500	\$100	\$1,400	\$0
Recovered	\$1,450	\$0	\$0	\$0	\$0	\$2,300	\$0	\$250	\$0
% Recovered	100.0%	0.0%	0.0%	0.0%	0.0%	92.0%	0.0%	17.9%	0.0%
Household Goods									
Stolen	\$0	\$0	\$100	\$3,350	\$0	\$0	\$190	\$0	\$0
Recovered	\$0	\$0	\$0	\$950	\$0	\$0	\$0	\$0	\$0
% Recovered	0.0%	0.0%	0.0%	28.4%	0.0%	0.0%	0.0%	0.0%	0.0%
Consumable Goods									
Stolen	\$0	\$46	\$97	\$40	\$30	\$63	\$285	\$507	\$0
Recovered	\$0	\$0	\$24	\$0	\$0	\$41	\$52	\$0	\$0
% Recovered	0.0%	0.0%	24.7%	0.0%	0.0%	65.1%	18.2%	0.0%	0.0%
Livestock									
Stolen	\$0	\$0	\$0	\$700	\$0	\$0	\$0	\$0	\$0
Recovered	\$0	\$0	\$0	\$0	\$0	\$0	\$0	\$0	\$0
% Recovered	0.0%	0.0%	0.0%	0.0%	0.0%	0.0%	0.0%	0.0%	0.0%
Misc.									
Stolen	\$8,204	\$3,875	\$18,511	\$245	\$31,140	\$16,357	\$13,021	\$10,160	\$0
Recovered	\$1,766	\$3,210	\$0	\$0	\$550	\$1,230	\$275	\$236	\$0
% Recovered	21.5%	82.8%	0.0%	0.0%	1.8%	7.5%	2.1%	2.3%	0.0%
TOTALS									
Stolen	\$229,654	\$35,494	\$1,193,502	\$7,047	\$112,293	\$80,101	\$54,835	\$43,896	\$0
Recovered	\$197,516	\$3,210	\$1,032,831	\$2,990	\$8,765	\$28,963	\$42,919	\$20,586	\$0
% Recovered	86.0%	9.0%	86.5%	42.4%	7.8%	36.2%	78.3%	46.9%	0.0%

Stolen/Recovered Property Report

October 2002

Property Type	Eureka SO	Fallon PD	Henderson PD	Humboldt SO	Lander SO	Las Vegas Metro	Lincoln SO	Lovelock PD	Lyon SO
Currency									
Stolen	\$0	\$1,712	\$64,870	\$0	\$100	\$1,393,996	\$853	\$0	\$2,273
Recovered	\$0	\$0	\$615	\$0	\$0	\$6,282	\$540	\$0	\$0
% Recovered	0.0%	0.0%	0.9%	0.0%	0.0%	0.5%	63.3%	0.0%	0.0%
Jewelry									
Stolen	\$0	\$130	\$69,853	\$0	\$0	\$1,908,505	\$0	\$0	\$1,860
Recovered	\$0	\$0	\$2,925	\$0	\$0	\$47,926	\$0	\$0	\$159
% Recovered	0.0%	0.0%	4.2%	0.0%	0.0%	2.5%	0.0%	0.0%	8.5%
Clothing									
Stolen	\$0	\$68	\$3,727	\$0	\$0	\$425,396	\$0	\$0	\$2,240
Recovered	\$0	\$0	\$404	\$0	\$0	\$26,171	\$0	\$0	\$0
% Recovered	0.0%	0.0%	10.8%	0.0%	0.0%	6.2%	0.0%	0.0%	0.0%
Motor Vehicle									
Stolen	\$2,850	\$0	\$807,415	\$3,500	\$1	\$6,469,567	\$0	\$0	\$6,930
Recovered	\$2,850	\$0	\$647,982	\$3,500	\$1	\$1,917,450	\$0	\$0	\$4,430
% Recovered	100.0%	0.0%	80.3%	100.0%	100.0%	29.6%	0.0%	0.0%	63.9%
Office Equipment									
Stolen	\$730	\$0	\$10,404	\$0	\$0	\$483,381	\$0	\$0	\$0
Recovered	\$0	\$0	\$3,000	\$0	\$0	\$5,198	\$0	\$0	\$0
% Recovered	0.0%	0.0%	28.8%	0.0%	0.0%	1.1%	0.0%	0.0%	0.0%
TV, VCR, Camera, Etc.									
Stolen	\$0	\$700	\$60,676	\$0	\$100	\$1,388,512	\$0	\$0	\$1,360
Recovered	\$0	\$0	\$4,124	\$0	\$0	\$21,487	\$0	\$0	\$100
% Recovered	0.0%	0.0%	6.8%	0.0%	0.0%	1.5%	0.0%	0.0%	7.4%
Firearm									
Stolen	\$0	\$410	\$5,165	\$0	\$500	\$63,717	\$0	\$0	\$3,395
Recovered	\$0	\$0	\$765	\$0	\$500	\$0	\$0	\$0	\$300
% Recovered	0.0%	0.0%	14.8%	0.0%	100.0%	0.0%	0.0%	0.0%	8.8%
Household Goods									
Stolen	\$225	\$80	\$2,468	\$0	\$0	\$204,691	\$1	\$0	\$800
Recovered	\$0	\$80	\$573	\$0	\$0	\$4,948	\$0	\$0	\$0
% Recovered	0.0%	100.0%	23.2%	0.0%	0.0%	2.4%	0.0%	0.0%	0.0%
Consumable Goods									
Stolen	\$27	\$119	\$418	\$0	\$0	\$61,438	\$0	\$70	\$46
Recovered	\$0	\$119	\$303	\$0	\$0	\$7,212	\$0	\$18	\$8
% Recovered	0.0%	100.0%	72.5%	0.0%	0.0%	11.7%	0.0%	25.7%	16.6%
Livestock									
Stolen	\$0	\$0	\$0	\$0	\$0	\$1,800	\$0	\$0	\$1,700
Recovered	\$0	\$0	\$0	\$0	\$0	\$0	\$0	\$0	\$0
% Recovered	0.0%	0.0%	0.0%	0.0%	0.0%	0.0%	0.0%	0.0%	0.0%
Misc.									
Stolen	\$805	\$7,768	\$199,112	\$150	\$3,400	\$2,587,560	\$50	\$0	\$8,951
Recovered	\$0	\$1,796	\$4,289	\$0	\$0	\$55,527	\$0	\$0	\$2,410
% Recovered	0.0%	23.1%	2.2%	0.0%	0.0%	2.1%	0.0%	0.0%	26.9%
TOTALS									
Stolen	\$4,637	\$10,987	\$1,224,108	\$3,650	\$4,101	\$14,988,563	\$904	\$70	\$29,555
Recovered	\$2,850	\$1,995	\$664,980	\$3,500	\$501	\$2,092,201	\$540	\$18	\$7,407
% Recovered	61.5%	18.2%	54.3%	95.9%	12.2%	14.0%	59.7%	25.7%	25.1%

Stolen/Recovered Property Report

October 2002

Property Type	Mesquite PD	Mineral SO	NLVPD	Nye SO	Pershing SO	Reno PD	Sparks PD	Storey SO	TMCC PD	UNLV PD
Currency										
Stolen	\$1,100	\$0	\$26,518	\$2,800	\$160	\$36,753	\$58,880	\$25	\$0	\$1,166
Recovered	\$0	\$0	\$6	\$0	\$0	\$40	\$139	\$0	\$0	\$0
% Recovered	0.0%	0.0%	0.0%	0.0%	0.0%	0.1%	0.2%	0.0%	0.0%	0.0%
Jewelry										
Stolen	\$300	\$675	\$147,659	\$1,500	\$0	\$144,031	\$36,756	\$0	\$0	\$0
Recovered	\$0	\$0	\$65	\$0	\$0	\$465	\$3,460	\$0	\$0	\$0
% Recovered	0.0%	0.0%	0.0%	0.0%	0.0%	0.3%	9.4%	0.0%	0.0%	0.0%
Clothing										
Stolen	\$0	\$0	\$24,864	\$650	\$135	\$20,559	\$4,496	\$0	\$0	\$1,920
Recovered	\$0	\$0	\$315	\$0	\$0	\$1,736	\$943	\$0	\$0	\$720
% Recovered	0.0%	0.0%	1.3%	0.0%	0.0%	8.4%	21.0%	0.0%	0.0%	37.5%
Motor Vehicle										
Stolen	\$0	\$0	\$1,101,810	\$36,000	\$10,000	\$640,470	\$155,005	\$0	\$0	\$104,400
Recovered	\$0	\$0	\$760,744	\$31,000	\$0	\$658,805	\$243,400	\$0	\$0	\$84,960
% Recovered	0.0%	0.0%	69.0%	86.1%	0.0%	102.9%	157.0%	0.0%	0.0%	81.4%
Office Equipment										
Stolen	\$0	\$0	\$1,278	\$900	\$0	\$31,106	\$17,000	\$0	\$0	\$0
Recovered	\$0	\$0	\$3	\$0	\$0	\$198	\$30	\$0	\$0	\$0
% Recovered	0.0%	0.0%	0.2%	0.0%	0.0%	0.6%	0.2%	0.0%	0.0%	0.0%
TV, VCR, Camera, Etc.										
Stolen	\$0	\$0	\$166,690	\$2,600	\$3,998	\$90,692	\$62,947	\$1,350	\$0	\$12,522
Recovered	\$0	\$0	\$2,073	\$1,500	\$0	\$253	\$2,895	\$0	\$0	\$0
% Recovered	0.0%	0.0%	1.2%	57.7%	0.0%	0.3%	4.6%	0.0%	0.0%	0.0%
Firearm										
Stolen	\$0	\$0	\$15,486	\$1,500	\$450	\$5,360	\$2,694	\$0	\$0	\$0
Recovered	\$0	\$0	\$0	\$500	\$0	\$0	\$0	\$0	\$0	\$0
% Recovered	0.0%	0.0%	0.0%	33.3%	0.0%	0.0%	0.0%	0.0%	0.0%	0.0%
Household Goods										
Stolen	\$15	\$0	\$4,860	\$450	\$0	\$108,225	\$18,847	\$0	\$0	\$0
Recovered	\$0	\$0	\$85	\$200	\$0	\$52	\$200	\$0	\$0	\$0
% Recovered	0.0%	0.0%	1.7%	44.4%	0.0%	0.0%	1.1%	0.0%	0.0%	0.0%
Consumable Goods										
Stolen	\$0	\$0	\$2,381	\$65	\$0	\$2,216	\$8,746	\$0	\$0	\$0
Recovered	\$0	\$0	\$635	\$65	\$0	\$600	\$264	\$0	\$0	\$0
% Recovered	0.0%	0.0%	26.7%	100.0%	0.0%	27.1%	3.0%	0.0%	0.0%	0.0%
Livestock										
Stolen	\$0	\$0	\$20	\$0	\$0	\$0	\$0	\$0	\$0	\$0
Recovered	\$0	\$0	\$0	\$0	\$0	\$0	\$0	\$0	\$0	\$0
% Recovered	0.0%	0.0%	0.0%	0.0%	0.0%	0.0%	0.0%	0.0%	0.0%	0.0%
Misc.										
Stolen	\$13,775	\$0	\$424,235	\$19,500	\$2,441	\$258,720	\$19,410	\$12	\$0	\$6,544
Recovered	\$100	\$0	\$1,313	\$8,695	\$400	\$3,802	\$3,268	\$0	\$0	\$260
% Recovered	0.7%	0.0%	0.3%	44.6%	16.4%	1.5%	16.8%	0.0%	0.0%	4.0%
TOTALS										
Stolen	\$15,190	\$675	\$1,915,801	\$65,965	\$17,184	\$1,338,132	\$384,781	\$1,387	\$0	\$126,552
Recovered	\$100	\$0	\$765,239	\$41,960	\$400	\$665,951	\$254,599	\$0	\$0	\$85,940
% Recovered	0.7%	0.0%	39.9%	63.6%	2.3%	49.8%	66.2%	0.0%	0.0%	67.9%

Stolen/Recovered Property Report

October 2002

Property Type	UNR PD	Washoe SO	Washoe Co Schl PD	Wendover PD	White Pine SO	Winnemucca PD	Yerington PD	Total By Property
Currency								
Stolen	\$0	\$7,455	\$108	\$67	\$160	\$2,160	\$0	\$1,639,615
Recovered	\$0	\$66	\$25	\$0	\$0	\$0	\$0	\$9,821
% Recovered	0.0%	0.9%	23.1%	0.0%	0.0%	0.0%	0.0%	0.6%
Jewelry								
Stolen	\$0	\$63,278	\$500	\$0	\$0	\$500	\$0	\$2,477,954
Recovered	\$0	\$0	\$0	\$0	\$0	\$0	\$0	\$56,050
% Recovered	0.0%	0.0%	0.0%	0.0%	0.0%	0.0%	0.0%	2.3%
Clothing								
Stolen	\$350	\$4,025	\$0	\$60	\$30	\$0	\$0	\$492,224
Recovered	\$0	\$0	\$0	\$0	\$30	\$0	\$0	\$30,467
% Recovered	0.0%	0.0%	0.0%	0.0%	100.0%	0.0%	0.0%	6.2%
Motor Vehicle								
Stolen	\$5,000	\$74,700	\$15,000	\$0	\$8,000	\$0	\$0	\$10,881,089
Recovered	\$5,000	\$23,620	\$0	\$0	\$8,000	\$0	\$0	\$5,713,851
% Recovered	100.0%	31.6%	0.0%	0.0%	100.0%	0.0%	0.0%	52.5%
Office Equipment								
Stolen	\$3,800	\$6,071	\$1,719	\$0	\$0	\$0	\$0	\$565,009
Recovered	\$0	\$0	\$89	\$0	\$0	\$0	\$0	\$8,518
% Recovered	0.0%	0.0%	5.2%	0.0%	0.0%	0.0%	0.0%	1.5%
TV, VCR, Camera, Etc.								
Stolen	\$10,890	\$36,298	\$1,932	\$810	\$1,125	\$6,000	\$0	\$1,898,165
Recovered	\$0	\$268	\$0	\$250	\$75	\$0	\$0	\$33,056
% Recovered	0.0%	0.7%	0.0%	30.9%	6.7%	0.0%	0.0%	1.7%
Firearm								
Stolen	\$0	\$3,389	\$0	\$0	\$250	\$2,000	\$0	\$111,623
Recovered	\$0	\$0	\$0	\$0	\$0	\$0	\$0	\$6,065
% Recovered	0.0%	0.0%	0.0%	0.0%	0.0%	0.0%	0.0%	5.4%
Household Goods								
Stolen	\$80	\$3,570	\$955	\$0	\$0	\$0	\$0	\$348,907
Recovered	\$0	\$0	\$0	\$0	\$0	\$0	\$0	\$7,088
% Recovered	0.0%	0.0%	0.0%	0.0%	0.0%	0.0%	0.0%	2.0%
Consumable Goods								
Stolen	\$0	\$642	\$0	\$111	\$26	\$452	\$0	\$77,825
Recovered	\$0	\$0	\$0	\$0	\$0	\$452	\$0	\$9,793
% Recovered	0.0%	0.0%	0.0%	0.0%	0.0%	100.0%	0.0%	12.6%
Livestock								
Stolen	\$0	\$0	\$0	\$0	\$0	\$0	\$0	\$4,220
Recovered	\$0	\$0	\$0	\$0	\$0	\$0	\$0	\$0
% Recovered	0.0%	0.0%	0.0%	0.0%	0.0%	0.0%	0.0%	0.0%
Misc.								
Stolen	\$6,699	\$72,803	\$2,005	\$180	\$814	\$1,387	\$0	\$3,737,834
Recovered	\$1,300	\$2,000	\$500	\$0	\$4	\$10	\$0	\$92,941
% Recovered	19.4%	2.7%	24.9%	0.0%	0.5%	0.7%	0.0%	2.5%
TOTALS								
Stolen	\$26,819	\$272,231	\$22,219	\$1,228	\$10,405	\$12,499	\$0	\$22,234,465
Recovered	\$6,300	\$25,954	\$614	\$250	\$8,109	\$462	\$0	\$5,967,650
% Recovered	23.5%	9.5%	2.8%	20.4%	77.9%	3.7%	0.0%	26.8%

Nevada--Assaults on Officers by Agency--UCR

October 2002

Agency	October	October	2002 YTD	2002 YTD	October	October	2001 YTD	2001 YTD
	2002 Offenses	2002 Cleared	Offenses	Cleared	2001 Offenses	2001 Cleared	Offenses	Cleared
Boulder	0	0	0	0	0	0	2	2
Carlin PD	0	0	3	3	1	1	2	2
Carson SO	0	0	9	8	0	0	12	12
Churchill SO	0	0	3	3	0	0	3	3
ClrkSchIDst PD	0	0	0	0	0	0	0	0
Douglas SO	0	0	5	5	0	0	4	4
Elko PD	1	1	4	4	0	0	0	0
Elko SO	0	0	0	0	0	0	0	0
Esmeralda SO	0	0	0	0	0	0	0	0
Eureka SO	0	0	0	0	0	0	0	0
Fallon PD	0	0	0	0	0	0	3	3
Henderson PD	1	1	24	24	0	0	30	30
Highway Patrol	0	0	18	18	1	1	15	15
Humboldt SO	0	0	3	3	0	0	0	0
Lander SO	0	0	0	0	0	0	0	0
Lincoln SO	0	0	0	0	0	0	0	0
Lovelock PD	0	0	0	0	0	0	0	0
LV Fire Dept	0	0	0	0	0	0	0	0
LV Metro	31	31	252	252	30	30	227	227
Lyon SO	1	1	5	5	0	0	6	6
Mesquite PD	0	0	0	0	0	0	0	0
Mineral SO	0	0	3	3	0	0	0	0
NV Div Investigations	0	0	0	0	0	0	0	0
NLVPD	2	2	61	61	4	4	36	35
Nye SO	1	1	13	13	0	0	4	4
Pershing SO	0	0	0	0	0	0	0	0
Reno PD	1	1	4	4	0	0	9	9
Sparks PD	1	1	4	4	0	0	7	7
Storey SO	0	0	0	0	0	0	0	0
TMCC PD	0	0	0	0	0	0	0	0
UNLV PD	2	2	3	3	1	1	9	8
UNR PD	0	0	0	0	0	0	0	0
Washoe SO	0	0	14	12	0	0	9	8
Washoe Co SchI PD	0	0	3	3	0	0	1	1
Wendover PD	0	0	1	1	0	0	2	2
White Pine SO	0	0	1	1	0	0	1	1
Winnemucca PD	0	0	3	3	0	0	6	6
Yerington PD	0	0	0	0	0	0	0	0
TOTALS	41	41	436	433	37	37	388	385

Nevada -- Assaults by Agency/Weapon/Assignment -- UCR

OCTOBER 2002

Table 16

Agency	Total Assaults	Number Cleared	Firearm	Knife / Cutting Device	Other Danger. Weapon	Hands, Fists, Feet, Etc.	2-Officer Vehicle	1-Officer Vehicle- Alone	1-Officer Vehicle- Assisted	Det./Spec. Assign. - Alone	Det./Spec. Assign. - Assisted	Other- Alone	Other- Assisted
Boulder City PD	0	0	0	0	0	0	0	0	0	0	0	0	0
Carlin PD	0	0	0	0	0	0	0	0	0	0	0	0	0
Carson City SO	0	0	0	0	0	0	0	0	0	0	0	0	0
Churchill Co SO	0	0	0	0	0	0	0	0	0	0	0	0	0
Clark School Dist PD	0	0	0	0	0	0	0	0	0	0	0	0	0
Douglas Co SO	0	0	0	0	0	0	0	0	0	0	0	0	0
Elko PD	1	1	0	0	0	1	0	0	1	0	0	0	0
Elko Co SO	0	0	0	0	0	0	0	0	0	0	0	0	0
Esmeralda Co SO	0	0	0	0	0	0	0	0	0	0	0	0	0
Eureka Co SO	0	0	0	0	0	0	0	0	0	0	0	0	0
Fallon PD	0	0	0	0	0	0	0	0	0	0	0	0	0
Henderson PD	1	1	0	0	0	1	0	1	0	0	0	0	0
NV Highway Patrol	0	0	0	0	0	0	0	0	0	0	0	0	0
Humboldt Co SO	0	0	0	0	0	0	0	0	0	0	0	0	0
Lander Co SO	0	0	0	0	0	0	0	0	0	0	0	0	0
Lincoln Co SO	0	0	0	0	0	0	0	0	0	0	0	0	0
Lovelock PD	0	0	0	0	0	0	0	0	0	0	0	0	0
Las Vegas Fire Dept	0	0	0	0	0	0	0	0	0	0	0	0	0
Las Vegas Metro PD	31	31	2	1	5	23	16	3	6	0	1	1	4
Lyon Co SO	1	1	0	0	0	1	0	1	0	0	0	0	0
Mesquite PD	0	0	0	0	0	0	0	0	0	0	0	0	0
Mineral Co SO	0	0	0	0	0	0	0	0	0	0	0	0	0
NV Div of Investigations	0	0	0	0	0	0	0	0	0	0	0	0	0
North Las Vegas PD	2	2	0	0	0	2	2	0	0	0	0	0	0
Nye Co SO	1	1	0	0	0	1	0	1	0	0	0	0	0
Pershing Co SO	0	0	0	0	0	0	0	0	0	0	0	0	0
Reno PD	1	1	0	0	0	1	0	0	1	0	0	0	0
Sparks PD	1	1	0	0	0	1	0	0	1	0	0	0	0
Storey Co SO	0	0	0	0	0	0	0	0	0	0	0	0	0
TMCC PD	0	0	0	0	0	0	0	0	0	0	0	0	0
UNLV PD	2	2	0	0	0	2	0	0	2	0	0	0	0
UNR PD	0	0	0	0	0	0	0	0	0	0	0	0	0
Washoe Co SO	0	0	0	0	0	0	0	0	0	0	0	0	0
Washoe Co School PD	0	0	0	0	0	0	0	0	0	0	0	0	0
West Wendover PD	0	0	0	0	0	0	0	0	0	0	0	0	0
White Pine Co SO	0	0	0	0	0	0	0	0	0	0	0	0	0
Winnemucca PD	0	0	0	0	0	0	0	0	0	0	0	0	0
Yerington PD	0	0	0	0	0	0	0	0	0	0	0	0	0
TOTALS	41	41	2	1	5	33	18	6	11	0	1	1	4

28

Nevada -- Officer Assaults by Activity/Weapon/Assignment -- UCR

OCTOBER 2002

Table 17

ACTIVITY TYPE	Total Assaults	Number Cleared	Firearm	Knife / Cutting Device	Other Danger. Weapon	Hands, Fists, Feet, Etc.	2-Officer Vehicle	1-Officer Vehicle-Alone	1-Officer Vehicle-Assisted	Det./Spec. Assign.-Alone	Det./Spec. Assign.-Assisted	Other-Alone	Other-Assisted
DOMESTIC / OTHER DISTURBANCE	14	14	2	1	4	7	11	1	2	0	0	0	0
BURGLARY IN PROGRESS	0	0	0	0	0	0	0	0	0	0	0	0	0
ROBBERY IN PROGRESS	1	1	0	0	1	0	0	0	1	0	0	0	0
ATTEMPTING OTHER ARREST	1	1	0	0	0	1	1	0	0	0	0	0	0
CIVIL DISORDER	1	1	0	0	0	1	0	0	1	0	0	0	0
HANDLING PRISONER	2	2	0	0	0	2	1	0	0	0	1	0	0
INVEST. SUSP. PERSONS / CIRCUM.	6	6	0	0	0	6	2	1	3	0	0	0	0
AMBUSH-NO WARNING	0	0	0	0	0	0	0	0	0	0	0	0	0
MENTALLY DERANGED	0	0	0	0	0	0	0	0	0	0	0	0	0
TRAFFIC PURSUITS / STOPS	9	9	0	0	0	9	0	2	4	0	0	0	3
ALL OTHER	7	7	0	0	0	7	3	2	0	0	0	1	1
TOTALS	41	41	2	1	5	33	18	6	11	0	1	1	4

29

Nevada--Assaults with Injury/without Injury--UCR

OCTOBER 2002

Agency	Total Assaults by weapon		Firearm		Cutting Instruments		Other Dangerous weapons		Hands, Fists, Feet, Etc.		
	With personal injury	Without personal injury	With personal injury	Without personal injury	With personal injury	Without personal injury	With personal injury	Without personal injury	With personal injury	Without personal injury	
Boulder City PD	0	0	0	0	0	0	0	0	0	0	
Carlin PD	0	0	0	0	0	0	0	0	0	0	
Carson City SO	0	0	0	0	0	0	0	0	0	0	
Churchill Co SO	0	0	0	0	0	0	0	0	0	0	
Clark Co Schl Dist PD	0	0	0	0	0	0	0	0	0	0	
Douglas Co SO	0	0	0	0	0	0	0	0	0	0	
Elko Co SO	0	0	0	0	0	0	0	0	0	0	
Elko PD	1	0	1	0	0	0	0	0	0	1	
Esmeralda Co SO	0	0	0	0	0	0	0	0	0	0	
Eureka Co SO	0	0	0	0	0	0	0	0	0	0	
Fallon PD	0	0	0	0	0	0	0	0	0	0	
Henderson PD	1	1	0	0	0	0	0	0	1	0	
NV Highway Patrol	0	0	0	0	0	0	0	0	0	0	
Humboldt Co SO	0	0	0	0	0	0	0	0	0	0	
Lander Co SO	0	0	0	0	0	0	0	0	0	0	
Las Vegas Metro PD	31	2	29	0	2	0	1	0	5	2	21
Lincoln Co SO	0	0	0	0	0	0	0	0	0	0	
Lovelock PD	0	0	0	0	0	0	0	0	0	0	
Lyon Co SO	1	0	1	0	0	0	0	0	0	1	
Mesquite PD	0	0	0	0	0	0	0	0	0	0	
Mineral Co SO	0	0	0	0	0	0	0	0	0	0	
NV Div Investigations	0	0	0	0	0	0	0	0	0	0	
North Las Vegas PD	2	0	2	0	0	0	0	0	0	2	
Nye Co SO	1	0	1	0	0	0	0	0	0	1	
Pershing Co SO	0	0	0	0	0	0	0	0	0	0	
Reno PD	1	0	1	0	0	0	0	0	0	1	
Sparks PD	1	0	1	0	0	0	0	0	0	1	
Storey Co SO	0	0	0	0	0	0	0	0	0	0	
TMCC PD	0	0	0	0	0	0	0	0	0	0	
UNLV PD	2	0	2	0	0	0	0	0	0	2	
UNR PD	0	0	0	0	0	0	0	0	0	0	
Washoe Co SO	0	0	0	0	0	0	0	0	0	0	
Washoe Co School Dist.	0	0	0	0	0	0	0	0	0	0	
West Wendover PD	0	0	0	0	0	0	0	0	0	0	
White Pine Co SO	0	0	0	0	0	0	0	0	0	0	
Winnemucca PD	0	0	0	0	0	0	0	0	0	0	
Yerington PD	0	0	0	0	0	0	0	0	0	0	
Totals	41	3	38	0	2	0	1	0	5	3	30

Nevada--Time of Assaults on Officers--UCR

October 2002

Agency	2:00 AM	4:00 AM	6:00 AM	8:00 AM	10:00 AM	12:00 AM	12:01-2:00 PM	2:00-4:00 PM	4:00-6:00 PM	6:00-8:00 PM	10:00 PM	10:00-12:00 PM
Boulder City PD	0	0	0	0	0	0	0	0	0	0	0	0
Carlin PD	0	0	0	0	0	0	0	0	0	0	0	0
Carson City SO	0	0	0	0	0	0	0	0	0	0	0	0
Churchill Co SO	0	0	0	0	0	0	0	0	0	0	0	0
Clark Co Schl Dist PD	0	0	0	0	0	0	0	0	0	0	0	0
Douglas Co SO	0	0	0	0	0	0	0	0	0	0	0	0
Elko Co SO	0	0	0	0	0	0	0	0	0	0	0	0
Elko PD	0	0	1	0	0	0	0	0	0	0	0	0
Esmeralda Co SO	0	0	0	0	0	0	0	0	0	0	0	0
Eureka Co SO	0	0	0	0	0	0	0	0	0	0	0	0
Fallon PD	0	0	0	0	0	0	0	0	0	0	0	0
Henderson PD	0	0	0	1	0	0	0	0	0	0	0	0
Highway Patrol	0	0	0	0	0	0	0	0	0	0	0	0
Humbolt Co SO	0	0	0	0	0	0	0	0	0	0	0	0
Lander Co SO	0	0	0	0	0	0	0	0	0	0	0	0
Las Vegas Metro PD	3	3	1	0	4	2	3	3	4	0	2	6
Lincoln Co SO	0	0	0	0	0	0	0	0	0	0	0	0
Lovelock PD	0	0	0	0	0	0	0	0	0	0	0	0
Lyon Co SO	1	0	0	0	0	0	0	0	0	0	0	0
Mesquite PD	0	0	0	0	0	0	0	0	0	0	0	0
Mineral Co SO	0	0	0	0	0	0	0	0	0	0	0	0
NV Div Investigations	0	0	0	0	0	0	0	0	0	0	0	0
North LV PD	0	0	0	0	0	0	0	0	0	1	0	1
Nye Co SO	0	0	0	1	0	0	0	0	0	0	0	0
Pershing Co SO	0	0	0	0	0	0	0	0	0	0	0	0
Reno PD	0	0	1	0	0	0	0	0	0	0	0	0
Sparks PD	0	0	0	0	0	0	0	0	1	0	0	0
Storey Co SO	0	0	0	0	0	0	0	0	0	0	0	0
TMCC PD	0	0	0	0	0	0	0	0	0	0	0	0
UNLV PD	2	0	0	0	0	0	0	0	0	0	0	0
UNR PD	0	0	0	0	0	0	0	0	0	0	0	0
Washoe Co SO	0	0	0	0	0	0	0	0	0	0	0	0
Washoe Co Schl PD	0	0	0	0	0	0	0	0	0	0	0	0
West Wendover PD	0	0	0	0	0	0	0	0	0	0	0	0
White Pine Co SO	0	0	0	0	0	0	0	0	0	0	0	0
Winnemucca PD	0	0	0	0	0	0	0	0	0	0	0	0
Yerington PD	0	0	0	0	0	0	0	0	0	0	0	0
Totals	6	3	3	2	4	2	3	3	5	1	2	7

Nevada -- Highway Patrol DUI Arrests -- UCR

6/13/2003

		NHP DUI Year-to-Date 2002 THRU DECEMBER																				Total			
		10- 13-					Age																		
		<10	12	14	15	16	17	18	19	20	21	22	23	24	25- 29	30- 34	35- 39	40- 44	45- 49	50- 54	55- 59	60- 64	>64	Unknown	
Carson City	M				1	2			2			4	5	24	18	19	30	14	12	8	7	1	4	151	
	F								2	3			1	5	7	5	7	8	1	1		1		41	
Churchill	M						1			1	1	1	1	1	1	6	2	4	4	1	1		1	25	
	F										1					1	1	1	1					5	
Clark	M				3	5	7			26	30	34	28	151	116	103	105	61	41	15	14	18	15	772	
	F					1				6	8	7	7	24	19	27	21	15	7	4	1	2	2	151	
Douglas	M									1	1				2	1	4	3	4	5	2	2	1	26	
	F															1	1	2	2		3			9	
Elko	M				1	1	1	1		3	5	7	4	17	8	9	13	4	7	5	4	2	2	94	
	F									1	2	1			2	5	5	6	1			1		25	
Esmeralda	M					1													1					2	
	F																1	1						2	
Eureka	M															1		1				1		3	
	F																							0	
Humboldt	M										2				1	1	3	6	3	3	1	4	1	25	
	F													1			1		1					3	
Lander	M											1			1	3			2	1	1	1		10	
	F											1												1	
Lincoln	M											1				2	1	3	1	1			1	10	
	F										1									1				2	
Lyon	M						1				2	1			7	6	4	7	3	3	3	3	3	43	
	F															3	2	3	1					9	
Mineral	M															1	1		2	1				5	
	F																							0	
Nye	M										1	1			1	1	7	5	7	6	2		1	32	
	F																	3	1					5	
Pershing	M														2			1	1					4	
	F																							0	
Story	M												1				1	1	1					4	
	F																			1				1	
Washoe	M				1	2		3	11		9	23	25	20	92	83	84	68	73	40	21	8	14	584	
	F							2	6		4	1	3	3	13	12	17	24	16	7	2	2	3	117	
White Pine	M							1			1			1	1	2	1	1	2		1	1	1	13	
	F								1											1	2	1		5	
Unknown County *	M					5			4		3	3	5	7	17	14	19	21	18	6	4	2	2	135	
	F										1					1	4	3		3	1			13	
Total		0	0	0	0	3	6	11	21	0	45	60	59	55	258	220	237	264	179	113	58	37	37	27	1690

* Due to reporting error.

Nevada -- Highway Patrol Drug Arrests -- UCR

NHP Drug Year-to-Date 2002 THRU DECEMBER

		Age																				Total			
		<10	10-12	13-14	15	16	17	18	19	20	21	22	23	24	25-29	30-34	35-39	40-44	45-49	50-54	55-59		60-64	>64	Unknown
Carson City	M				2			3		2		2			8	3	4	9	4				1	5	43
	F										2				2			1	2						7
Churchill	M														1	2		1	1						5
	F														2										2
Clark	M				1		1	5	10		4	12	9	10	48	32	23	22	17	5	1	3		12	215
	F				1	2			1		3	2	2	1	8	6	8	4	2	1				4	45
Douglas	M															2	1		2						5
	F																								0
Elko	M						2	2	1			1		1	4		1		2						14
	F				3						1				1		1								6
Esmeralda	M														1	4		1		1					7
	F																4		1						5
Eureka	M																								0
	F																								0
Humboldt	M															3	2	1		1					7
	F															1	1	2							4
Lander	M					1						1			3	1			1						7
	F													1			2								3
Lincoln	M												2			5									7
	F																								0
Lyon	M										2				2	2		2						1	9
	F																			1					1
Mineral	M						1									1	2		1						5
	F															2									2
Nye	M										1					2	1							1	5
	F																			1					1
Pershing	M									1						2									3
	F									1										1					2
Story	M																1								1
	F																								0
Washoe	M			1	1		2	10		20	5	13	8	36	33	21	15	7	4	1		1	16	194	
	F						2	1					2	11	3	6		1	2				7	35	
White Pine	M									1	1			2		1									5
	F									1							1								2
Unknown County *	M					1		1		2				11	6	3	3	1	4	1		1	2	36	
	F						1						1	2	2		3							9	
Total		0	0	0	6	3	8	12	27	0	35	27	27	26	140	100	91	70	42	21	3	3	3	48	692

* Due to reporting error.

Nevada -- Division Of Investigations

Arrests for Narcotics Violations

JANUARY TO DECEMBER 2002

		10- 13-										25- 30- 35- 40- 45- 50- 55- 60-										Total	W	B	A	I																
		<10	12	14	15	16	17	18	19	20	21	22	23	24	29	34	39	44	49	54	59	64	>64																			
SALES/MANUFACTURING VIOLATIONS																																										
Opium or cocaine and their derivatives (morphine, heroin, codeine)	M	1										1										2	1																			
	F																										0	1														
												1										1	1	2	1	1																
Marijuana	M	2										1	1										1	1	1	1	6	1														
	F																										3	9														
Synthetic narcotics- Manufactured narcotics that can cause true drug addiction (demerol, meth)	M	4										1	1	2	2	2										3	7	7	1	2	4	33	3									
	F	1										1	1										1	3	2	3	2										16	46	2	2		
		1										1	2	3	1	7	2	9	5	4	1	1	1	5										16	11	25	24					
		1										1	2										1	1	3										5	9	4	4	1			
Other dangerous, non-narcotic, drugs (barbituates, benzderine)	M																										0															
	F																										0															
		1										1										2	1	4										2	1							
Sub-Total	M	0	0	0	0	0	0	4	3	3	1	2	0	3	3	6	7	4	2	3	0	0	0	40	3	1	1	0														
	F	0	0	0	0	1	0	1	0	1	0	1	1	1	1	3	3	4	1	1	0	0	0	19	56	1	1	0														
POSSESSION VIOLATIONS		0	0	0	0	0	0	1	0	3	2	3	1	9	5	12	5	5	2	1	1	0	22	14	31	27	3															
		0	0	0	0	0	0	1	0	1	0	0	0	3	1	1	1	3	1	0	0	0	5	11	7	7	1															
Opium or cocaine and their derivatives (morphine, heroin, codeine)	M																										0															
	F																										0	0														
Marijuana	M	2										1	1	1	1										2	1	1	12	0													
	F	1										1	1										3										14	1								
Synthetic narcotics- Manufactured narcotics that can cause true drug addiction (demerol, meth)	M	1										2	2	3	1	1	1	4	2	7	4	2	1										1	26	5	8	8					
	F	1										3	1										4	2	1	16										33	3	2	1			
		1										4										3										2	2	5	4	2	15	14	8	8		
		2										2	2	2										2	2	1										3	2	1	8	9	9	9
Other dangerous, non-narcotic, drugs (barbituates, benzderine)	M																										3															
	F																										1	4														
		2										1										1	2										1	1	1	5	5	6	6			
Sub-Total	M	0	0	0	0	0	2	3	3	2	4	1	2	1	4	1	7	5	1	0	1	0	1	37	2	3	1	0														
	F	0	0	0	0	0	2	3	0	1	1	2	1	0	1	2	0	2	0	0	0	0	15	44	1	2	1															
Total		0	0	0	0	1	5	12	8	8	7	11	5	6	15	16	22	19	11	7	3	0	1	135	125	24	25	1														

Nevada UCR
*Footnotes / Exceptions

October 2002

Table 1

--Nevada figures are annualized projections.

--"Assault" does not include simple assaults to allow direct comparison between the Nevada rate and the National rate for this Index offense. See Table 8 for a count of all assaults.

Table 2

--The LV Fire Department reports "Arson" offenses for the City of Las Vegas. The population figure for this agency represents jurisdiction and is not added to the county total. Similarly, the School District Police Departments in Clark and Washoe Counties are not added to county population estimates as they represent persons served (student enrollment plus staff.)

--Assault data in this table includes ALL assaults (aggravated and simple) reported for the current month.

--County crime rates are calculated following subtraction of populations of jurisdictions failing to report.

Table 3

-- In the "Nevada vs National Index Crime and Clearance Rates" sections, the "Assaults" numbers do not include simple assaults following FBI guidelines. Therefore, they may be compared directly to National rates.

-- National crime rate figures are the latest available for comparative use (2000). Nevada figures are annualized projections.

Table 13

--At various times, property values recovered will exceed values stolen for the current reporting period.

General Notes:

■ The following agency(ies) was unable to submit reports for this month: All agencies reported.

-- Any late reports not submitted in time for this publication will be incorporated in to the year-to-date totals in subsequent reports.