

UNIFORM CRIME REPORTING PROGRAM
UCR STATISTICAL DATA VERIFICATION FORM

As an agency administrator or designee for the _____, I have
(Name of Agency)
reviewed the UCR monthly statistics for **November 2002** which includes all UCR data
submitted year to date. Based upon my or my designee's review and validation of same, I find
that:

All data contained in the report for my agency is accurate and complete and may be
released and made part of UCR publications for future distribution to the public and other
interested UCR data subscribers.

Data contained in the report is inaccurate or incomplete and may not be published or
released at this time. (If this choice is selected, please provide the reason in the space
provided below.)

Reason: _____

The corrected data will be supplied to the UCR Program by: _____.
(Date)

This document must be signed and mailed to the Uniform Crime Reporting Program, 808 W.
Nye Lane, Carson City, Nevada 89703 or faxed to (775) 687-1843 by **June 30, 2003**.

Signature of Agency Administrator (or designee)

Name/Title of Agency Administrator (print or type)

Agency's Name/Location

Date

Department of Public Safety
Nevada Highway Patrol
Records and Identification Bureau

Monthly Report



NOVEMBER

2002

**Richard Kirkland, Director
Department of Public Safety**

**Colonel David Hosmer, Chief
Nevada Highway Patrol**

**Daryl Riersgard, Manager
Records and Identification Bureau**

Tenna Herman, Management Analyst I

**Prepared by:
Records and Identification Bureau
Uniform Crime Reporting
808 W. Nye Lane
Carson City, Nevada 89703
(775) 687-1600**

Nevada UCR Definitions / Explanations

Uniform Crime Reporting Program

The UCR program is a nationwide, cooperative, statistical effort by over 17,000 city, county and state law enforcement agencies that voluntarily report data on crimes brought to their attention. Law enforcement agencies active in the national program represent 95% of the total population of the United States. While the program's primary objective is to generate a reliable set of crime statistics for use in law enforcement administration, operation and management, its data has over the years become one of the country's leading social indicators.

In Nevada, 36 agencies are currently reporting UCR data to the statewide program representing nearly 99% of its population. Rather than submitting directly to the FBI, local agencies must submit crime data to the state UCR Repository, which compiles, analyzes and submits copies of the reports to the FBI. The Nevada UCR Program prides itself on its responsiveness to local contributing agencies that previously received limited feedback for their efforts. The Nevada program is also responsible for producing and distributing periodic reports of the information contained in its database. As its database has grown, the program's utility has become even more apparent.

Eight offenses serve as an index for gauging fluctuations in overall volumes and rates of crime. Known collectively as the " Crime Index, " these offenses include *the violent crimes of murder, rape, robbery and assault and the property crimes of burglary, larceny, motor vehicle theft and arson*. These offenses were selected as a grouped measuring device because they represent the most common crime problems. They are all serious crimes; either by their very nature or due to the volume and frequency with which they occur.

Index Crimes Definitions

Murder and Non-negligent Manslaughter

Murder and non negligent manslaughter, as defined in the Uniform Crime Reporting Program, is the willful (non-negligent) killing of a human being by another.

The classification of this offense, as for all other Crime Index offenses, is based solely on police investigation as opposed to the determination of a court, medical examiner, coroner, jury or other judicial entity. Not included in the count for this offense classification are deaths caused by negligence, suicide or accident, justifiable homicides and attempts to murder or assaults to murder. These are scored as aggravated assaults.

Nevada UCR Definitions / Explanations

Forcible Rape

Forcible rape, as defined in the program, is the carnal knowledge of a female forcibly and against her will. Assaults or attempts to commit rape by force or threat of force are also included; however, statutory rape (without force) and other sex offenses are excluded.

Robbery

Robbery is the taking or attempting to take anything of value from the care, custody or control of a person or persons by force or threat of force or violence and/or by putting the victim in fear.

Aggravated Assault

Aggravated assault is an unlawful attack by one person upon another for the purpose of inflicting severe or aggravated bodily injury. This type of assault is usually accompanied by the use of a weapon or by means likely to produce death or great bodily harm. Attempts are included since it is not necessary that an injury result when a gun, knife or other weapon is used which could and probably would result in serious personal injury if the crime were successfully completed

Burglary

The Uniform Crime Reporting Program defines burglary as the unlawful entry of a structure to commit a felony or theft. The use of force to gain entry is not required to classify an offense as burglary. Burglary in this program is categorized into three sub classifications: forcible entry, unlawful entry where no force is used and attempted forcible entry.

Larceny-Theft

Larceny-theft is the unlawful taking, carrying, leading, or riding away of property from the possession or constructive possession of another. It includes crimes such as shoplifting, pocket picking, purse-snatching, thefts from motor vehicles, thefts of motor vehicle parts and accessories, and bicycle thefts, etc., in which no use of force, violence, or fraud occurs. In the UCR Program, this crime category does not include embezzlement, "con" games, forgery, and worthless checks. Motor vehicle theft is also excluded from this category inasmuch as it is a separate Crime Index offense.

Motor Vehicle Theft

Defined as the theft or attempted theft of a motor vehicle, this offense category includes the stealing of automobiles, trucks, buses, motorcycles, motor scooters, snowmobiles, etc. The definition excludes the taking of a motor vehicle for temporary use by those persons having lawful access.

Nevada UCR

Definitions / Explanations

Arson

Arson is defined by the Uniform Crime Reporting Program as any willful or malicious burning or attempt to burn, with or without intent to defraud, a dwelling house, public building, a motor vehicle or aircraft, personal property of another, etc. Only fires determined through investigation to have been willfully or maliciously set are classified as arsons. Fires of suspicious or unknown origins are excluded.

Population Estimates

State, county and incorporated city population estimates are prepared and reviewed prior to the end of each calendar year for certification by the governor by March 1. The Nevada Department of Taxation and Nevada State Demographer, Bureau of Business and Economic Research, College of Business Administration, University of Nevada, Reno, prepares these estimates.

Crime Rates

Crime rates involve the number of Index Crimes per unit of population, usually per 100,000 persons. Because Nevada has such a low population, a rate per 1,000 persons is used to reflect a more realistic volume. No attempt is made to incorporate transient populations or other factors that contribute to the ratio and types of crime in given areas. Any effort to make comparisons of crime rates between areas should be tempered by these population and environmental variables.

Crime rates are one of the most meaningful statistical elements. Computation of crime rates per 1,000 population is achieved by dividing the community's population by 1,000, then dividing the number of offenses in each class by that number. The answer is the number of offenses per 1,000 population and is the crime rate for that particular offense. In Table 2, the County Total Crime Rate is computed after subtracting the population figure for all non-reporting agencies for the current month.

The index offense "Aggravated Assault" is an item of special interest to users of Nevada's UCR report. In Tables 1 & 3, where Nevada and National crime rates are compared, "simple assaults" are subtracted from the total of all assaults following FBI UCR rules, thus allowing for direct comparison. However, total assaults (simple and aggravated) are also presented in the Nevada report. This is because the Nevada UCR staff believes this figure is an important indicator of risk for citizens and it presents a more balanced picture of this portion of the crime index to law enforcement personnel.

The Federal Bureau of Investigation, Uniform Crime Reporting Section, publishes national rates.

Clearance Rates

The percentage of crimes cleared is obtained by dividing the number of offenses cleared by the number of offenses known. This number is then multiplied by 100.

Nevada--Statewide Summary--UCR Index Crimes

NOVEMBER 2002

Offense	Crimes	#	%	Crimes	#	%	November Crimes 2001	November Cleared 2001	% November Cleared 2001	NV Rate / 1,000 (Proj) *	2001 NV Rate / 1,000	2000 Ntl. Rate / 1,000
	this Month	Cleared this Month	Cleared this Month	this YTD	Cleared this YTD	Cleared this YTD						
Murder	13	7	54	170	98	58	22	10	45	0.09	0.07	0.55
Rape	75	17	23	864	318	37	87	26	30	0.43	0.44	0.32
Robbery	488	89	18	4,599	933	20	410	71	17	2.39	2.31	1.45
Assault *	649	287	44	7,062	3,427	49	372	182	49	3.07	2.51	3.24
Burglary	1,534	374	24	17,310	4,051	23	1,524	398	26	8.57	8.91	7.28
Larceny	3,370	937	28	43,198	10,916	25	3,737	1,046	28	21.81	22.43	24.75
MV Theft	1,466	199	14	15,784	2,345	15	1,139	122	11	7.11	6.69	4.14
Arson	66	13	20	595	94	16	47	10	21	0.26	0.30	0.37
Total	7,661	1,923	25	89,582	22,182	25	7,338	1,865	25	43.72	43.65	42.10

* The projected Crime Rate for Assaults is computed after subtracting Simple Assaults from the total for all Assaults following FBI guidelines. Therefore, this rate may be compared directly to the National Rate. See Table 3 and the "Footnotes/Exceptions page for further information.

Nevada UCR - - Monthly Crime/ Clearance Summary - - All Crimes

Contributing Agency	Est. Pop	Murder		Rape		Robbery		Assault		Burglary		Larceny		MV Theft		Arson		Total Crimes	Crime Rate	Clearances	Clearance Rate
November 2002																					
Carson County																					
Carson SO	54,171	1	1	0	0	1	0	74	38	30	5	102	12	15	2	3	0	226	4.17	58	25.7%
County Total	54,171	1	1	0	0	1	0	74	38	30	5	102	12	15	2	3	0	226	4.17	58	25.7%
Churchill County																					
Churchill SO	16,766	0	0	3	0	0	0	28	27	3	1	7	2	2	2	0	0	43	2.56	32	74.4%
Fallon PD	8,162	0	0	0	0	0	0	24	16	4	0	30	7	1	1	0	0	59	7.23	24	40.7%
County Total	24,928	0	0	3	0	0	0	52	43	7	1	37	9	3	3	0	0	102	4.09	56	54.9%
Clark County																					
Boulder PD	14,760	0	0	0	0	1	0	11	11	12	1	13	0	1	1	0	0	38	2.57	13	34.2%
Clark Co. Schools PD*	267,697	0	0	0	0	3	1	72	47	13	0	51	10	6	1	1	0	146	0.55	59	40.4%
Henderson	196,780	2	0	3	4	19	7	161	95	106	18	236	67	108	7	12	5	647	3.29	203	31.4%
LV Metro PD	1,134,478	7	4	42	6	361	49	1,756	626	955	278	1,376	462	1,039	137	12	0	5,548	4.89	1,562	28.2%
LV Fire Dept*	506,111															8	2	8	0.02	2	25.0%
Mesquite	11,940	0	0	0	0	0	0	16	12	2	0	20	7	3	3	0	0	41	3.43	22	53.7%
North Las Vegas PD	127,897	2	1	6	0	34	5	197	107	121	16	241	56	113	11	9	0	723	5.65	196	27.1%
UNLV PD*	24,500	0	0	0	0	0	0	1	1	10	0	17	0	10	1	2	0	40	1.63	2	5.0%
County Total	1,485,855	11	5	51	10	418	62	2,214	899	1,219	313	1,954	602	1,280	161	44	7	7,191	4.84	2,059	28.6%
Douglas County																					
Douglas SO	43,450	0	0	0	0	2	1	24	21	17	2	58	14	5	4	2	1	108	2.49	43	39.8%
County Total	43,450	0	0	0	0	2	1	24	21	17	2	58	14	5	4	2	1	108	2.49	43	39.8%

*Population figure not included in county total
Table 2

Nevada UCR - - Monthly Crime/ Clearance Summary - - All Crimes

Contributing Agency	Est. Pop	Murder		Rape		Robbery		Assault		Burglary		Larceny		MV Theft		Arson		Total Crimes	Crime Rate	Clearances	Clearance Rate
November 2002																					
Elko County																					
Elko SO	22,795	0	0	1	0	0	0	2	2	11	0	10	1	1	1	0	0	25	1.10	4	16.0%
Carlin PD	2,166	0	0	0	0	0	0	0	0	1	0	2	1	0	0	0	0	3	1.39	1	33.3%
Elko PD	17,093	0	0	1	0	0	0	17	6	13	2	29	6	0	0	0	0	60	3.51	14	23.3%
Wendover PD	4,614	0	0	0	0	1	1	3	3	3	0	10	5	1	1	0	0	18	3.90	10	55.6%
County Total	46,668	0	0	2	0	1	1	22	11	28	2	51	13	2	2	0	0	106	2.27	29	27.4%
Esmeralda County																					
Esmeralda SO	1,038	0	0	0	0	0	0	1	1	0	0	0	0	0	0	0	0	1	0.96	1	100.0%
County Total	1,038	0	0	0	0	0	0	1	1	0	0	0	0	0	0	0	0	1	0.96	1	100.0%
Eureka County																					
Eureka SO	1,506	0	0	0	0	0	0	0	0	0	0	1	0	1	1	0	0	2	1.33	1	50.0%
County Total	1,506	0	0	0	0	0	0	0	0	0	0	1	0	1	1	0	0	2	1.33	1	50.0%
Humboldt County																					
Humboldt SO	9,163	0	0	0	0	0	0	7	3	2	0	5	2	1	1	0	0	15	1.64	6	40.0%
Winnemucca PD	7,001	0	0	0	0	0	0	8	8	2	1	10	4	2	0	0	0	22	3.14	13	59.1%
County Total	16,164	0	0	0	0	0	0	15	11	4	1	15	6	3	1	0	0	37	2.29	19	51.4%

*Population figure not included in county total
Table 2

Nevada UCR - - Monthly Crime/ Clearance Summary - - All Crimes

Contributing Agency	Est. Pop	Murder	Rape	Robbery	Assault	Burglary	Larceny	MV Theft	Arson	Total Crimes	Crime Rate	Clearances	Clearance Rate
										November 2002			
Lander County													
Lander SO	5,761	0 0	0 0	0 0	3 2	1 0	1 0	1 0	0 0	6	1.04	2	33.3%
County Total	5,761	0 0	0 0	0 0	3 2	1 0	1 0	1 0	0 0	6	1.04	2	33.3%
Lincoln County													
Lincoln SO	3,861	0 0	0 0	0 0	5 2	2 2	2 0	0 0	0 0	9	2.33	4	44.4%
County Total	3,861	0 0	0 0	0 0	5 2	2 2	2 0	0 0	0 0	9	2.33	4	44.4%
Lyon County													
Lyon SO	34,440	0 0	2 1	0 0	40 37	13 1	32 9	4 2	2 2	93	2.70	52	55.9%
Yerington PD	2,889	0 0	0 0	0 0	1 0	0 0	1 1	0 0	0 0	2	0.69	1	50.0%
County Total	37,329	0 0	2 1	0 0	41 37	13 1	33 10	4 2	2 2	95	2.54	53	55.8%
Mineral County													
Mineral SO	4,743	0 0	0 0	1 1	1 1	1 0	1 0	0 0	1 1	5	1.05	3	60.0%
County Total	4,743	0 0	0 0	1 1	1 1	1 0	1 0	0 0	1 1	5	1.05	3	60.0%
Nye County													
Nye SO	34,384	0 0	0 0	1 1	60 60	22 16	37 20	6 4	2 1	128	3.72	102	79.7%
County Total	34,384	0 0	0 0	1 1	60 60	22 16	37 20	6 4	2 1	128	3.72	102	79.7%

*Population figure not included in county total
Table 2

Nevada UCR - - Monthly Crime/ Clearance Summary - - All Crimes

Contributing Agency	Est. Pop	Murder	Rape	Robbery	Assault	Burglary	Larceny	MV Theft	Arson	Total Crimes	Crime Rate	Clearances	Clearance Rate
Pershing County										November 2002			
Pershing SO	4,729	0 0	0 0	0 0	2 0	1 0	4 0	0 0	0 0	7	1.48	0	0.0%
Lovelock PD	2,144	0 0	0 0	0 0	2 2	1 1	4 1	0 0	0 0	7	3.26	4	57.1%
County Total	6,873	0 0	0 0	0 0	4 2	2 1	8 1	0 0	0 0	14	2.04	4	28.6%
Storey County													
Storey	3,714	0 0	0 0	0 0	3 1	0 0	2 0	0 0	0 0	5	1.35	1	20.0%
County Total	3,714	0 0	0 0	0 0	3 1	0 0	2 0	0 0	0 0	5	1.35	1	20.0%
Washoe County													
Washoe SO	94,634	0 0	0 0	4 2	60 38	27 6	74 11	20 4	2 0	187	1.98	61	32.6%
Reno PD	186,883	1 1	11 4	52 18	359 194	112 9	797 198	92 10	9 1	1,433	7.67	435	30.4%
Sparks PD	71,753	0 0	4 2	7 3	116 116	43 14	148 31	34 5	0 0	352	4.91	171	48.6%
UNR PD*	15,000	0 0	1 0	0 0	2 0	2 0	20 0	0 0	0 0	25	1.67	0	0.0%
Washoe Co Schl PD*	57,592	0 0	1 0	1 0	2 2	3 0	20 8	0 0	1 0	28	0.49	10	35.7%
TMCC PD*	12,311	0 0	0 0	0 0	0 0	0 0	2 0	0 0	0 0	2	0.16	0	0.0%
County Total	353,270	1 1	17 6	64 23	539 350	187 29	1,061 248	146 19	12 1	2,027	5.74	677	33.4%
White Pine County													
White Pine SO	8,783	0 0	0 0	0 0	10 6	1 1	7 2	0 0	0 0	18	2.05	9	50.0%
County Total	8,783	0 0	0 0	0 0	10 6	1 1	7 2	0 0	0 0	18	2.05	9	50.0%
Grand Total	2,132,498	13 7	75 17	488 89	3,068 1,485	1,534 374	3,370 937	1,466 199	66 13	10,080	4.73	3,121	31.0%

*Population figure not included in county total
Table 2

Nevada UCR - - Monthly Crimes/Clearances Summary - - Index Crimes

NOVEMBER 2002

	Est. Pop	Murder		Rape		Robbery		Assault		Burglary		Larceny		MV Theft		Arson		Total Crimes	Crime Rate	Total Clear	Clearance Rate
Statewide Totals																					
(Crimes/Clearances)	2,132,498	13	7	75	17	488	89	649	287	1534	374	3370	937	1466	199	66	13	7661	3.59	1923	25.10

Nevada (Projected 2002) vs National (2000) Index Crime Rates

(per 1,000 population)

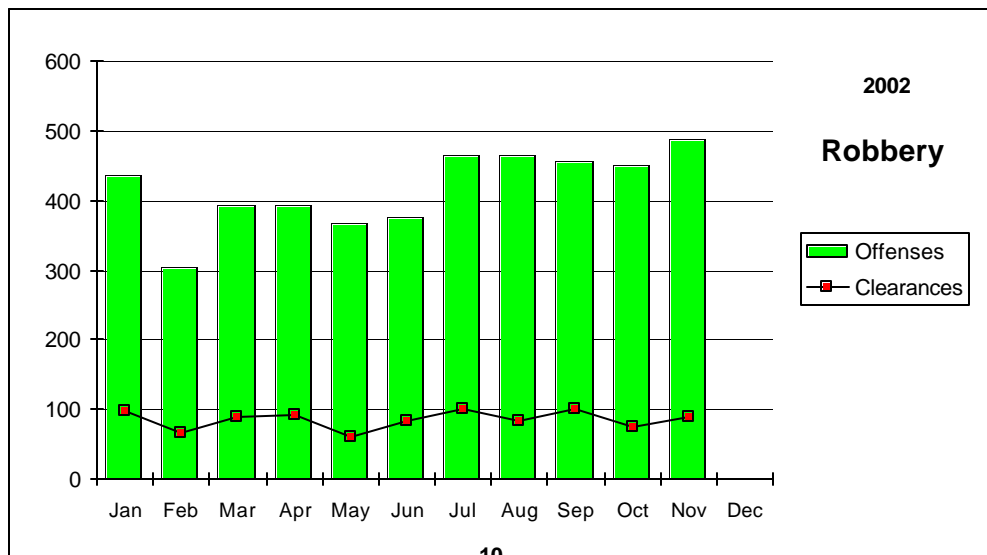
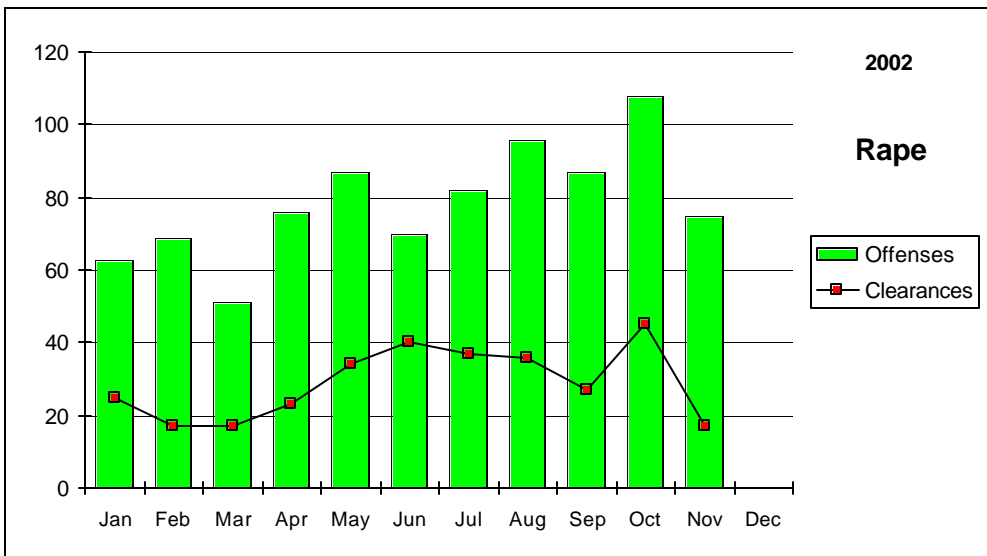
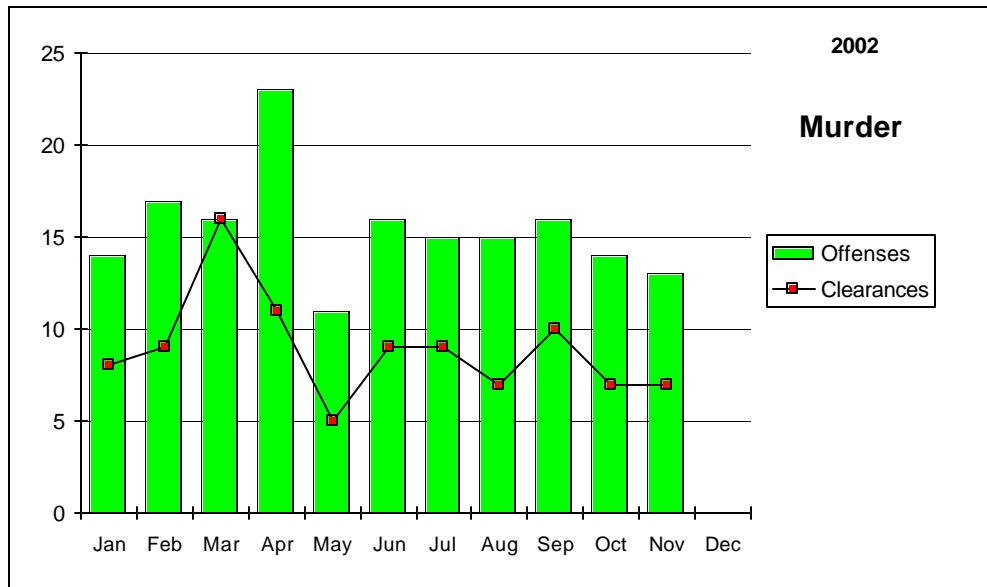
	Murder	Rape	Robbery	Assault	Burglary	Larceny	MV Theft	Arson	Crime Rate
Nevada	0.09	0.44	2.35	3.61	8.86	22.10	8.07	0.30	45.83
National	0.55	0.32	1.45	3.24	7.28	24.75	4.14	0.37	42.10

Nevada (Projected 2002) vs National (2000) Crime Clearance Rates

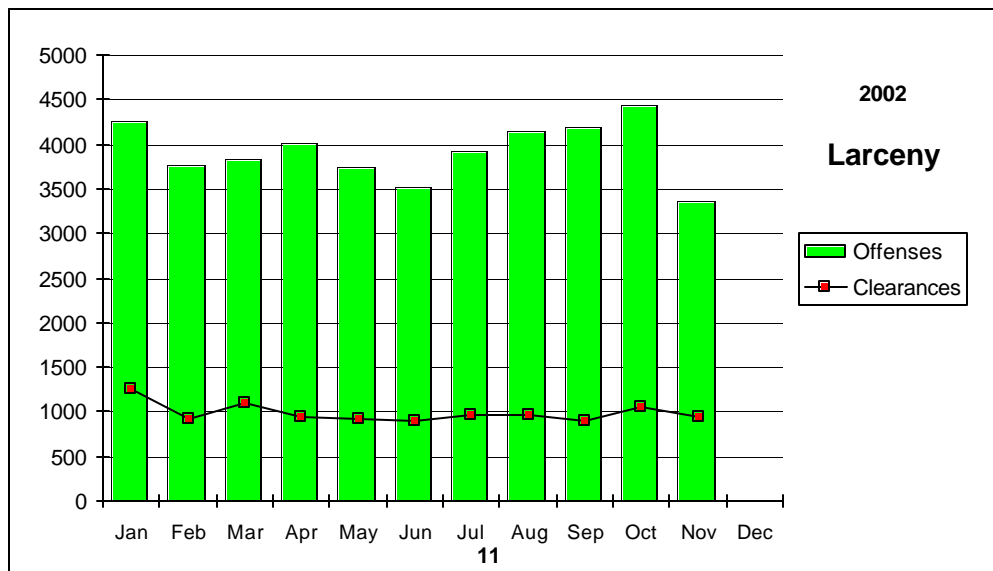
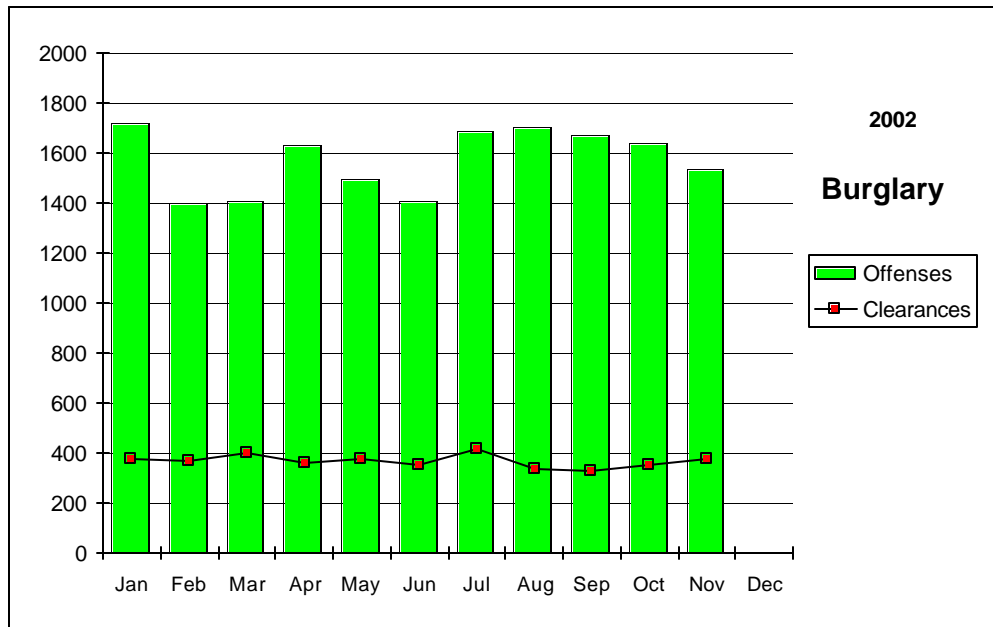
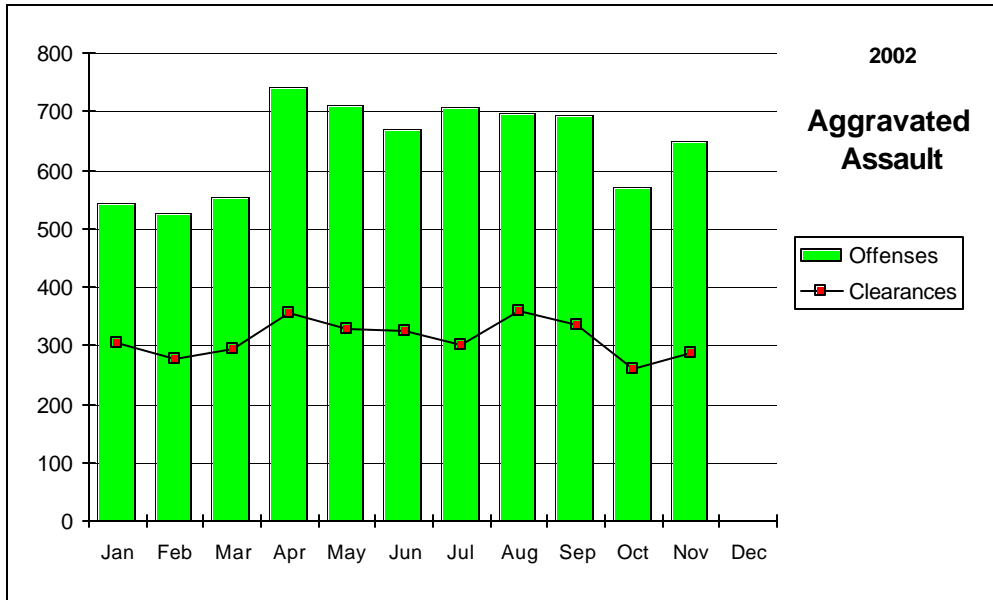
(by Percent)

	Murder	Rape	Robbery	Assault	Burglary	Larceny	MV Theft	Arson	Clear Rate
Nevada	57.65	36.81	20.29	48.53	23.40	25.27	14.86	15.80	24.73
National	63.10	46.90	25.70	56.90	13.40	18.20	14.10	16.00	20.50

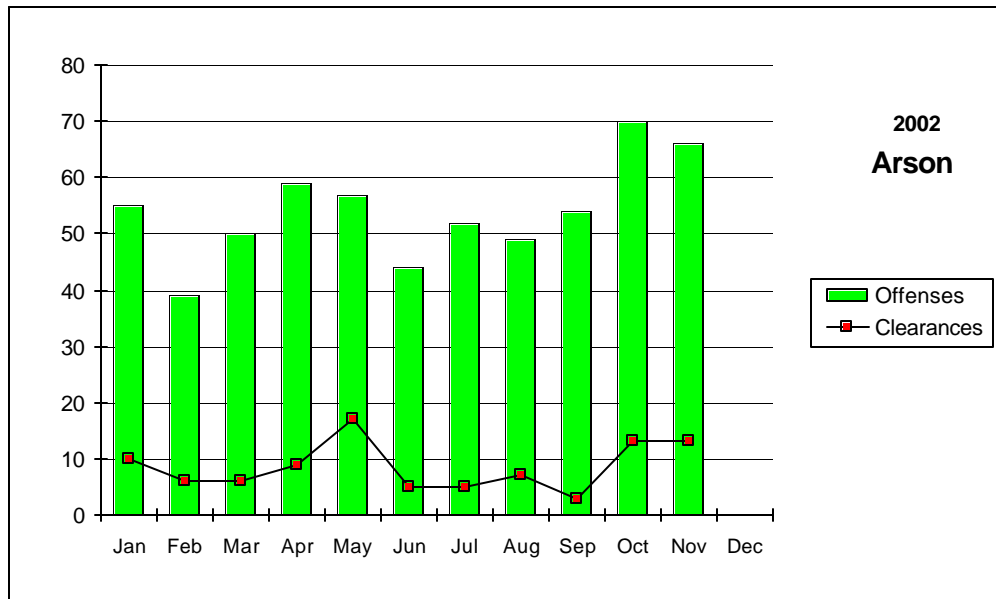
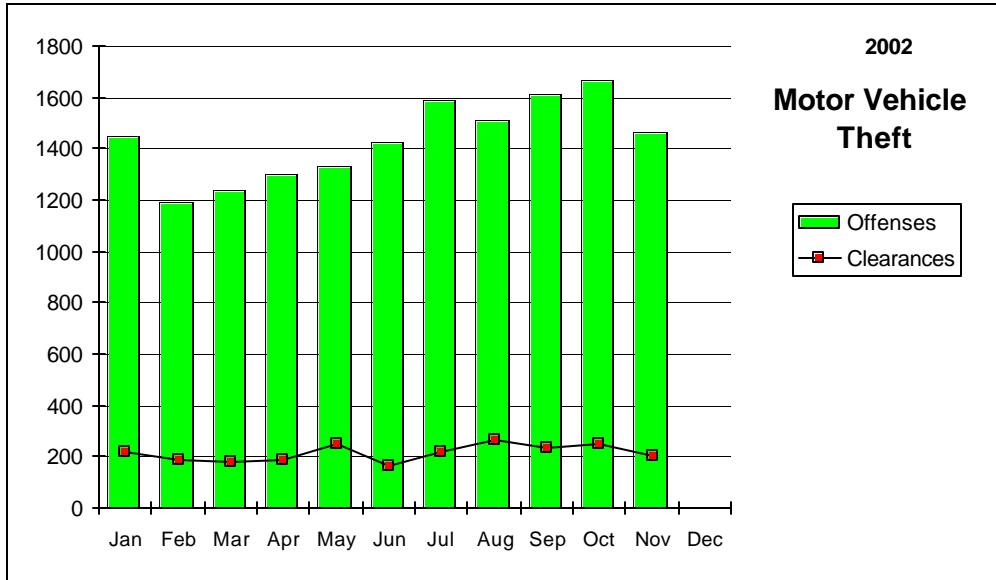
Nevada--Graphic Summary--UCR



Nevada--Graphic Summary--UCR



Nevada--Graphic Summary--UCR



Nevada--Murder--Incidence Level Variation--UCR

November 2002

Agency	November 2002 Offenses	November 2002 Cleared	YTD Offenses	2002 YTD Cleared	November 2001 Offenses	November 2001 Cleared	YTD Offenses	2001 YTD Cleared
Boulder	0	0	0	0	0	0	0	0
Carlin PD	0	0	0	0	0	0	0	0
Carson SO	1	1	1	1	0	0	0	0
Churchill SO	0	0	0	0	0	0	-1	0
Clark Co Schl PD	0	0	0	0	0	0	0	0
Douglas SO	0	0	1	1	0	0	0	0
Elko PD	0	0	1	0	0	0	0	0
Elko SO	0	0	1	1	0	0	2	1
Esmeralda SO	0	0	0	0	0	0	0	0
Eureka SO	0	0	0	0	0	0	0	0
Fallon PD	0	0	0	0	0	0	0	0
Henderson PD	2	0	5	4	0	0	9	7
Humboldt SO	0	0	0	0	0	0	0	0
Lander SO	0	0	0	0	0	0	0	0
Lincoln SO	0	0	0	0	0	0	0	0
Lovelock PD	0	0	0	0	0	0	0	0
LV Fire Dept	0	0	0	0	0	0	0	0
LV Metro	7	4	126	70	4	4	125	87
Lyon SO	0	0	0	0	0	0	1	1
Mesquite PD	0	0	0	0	0	0	0	0
Mineral SO	0	0	1	1	0	0	1	1
NLVPD	2	1	19	5	0	1	20	7
Nye SO	0	0	2	1	0	0	1	1
Pershing SO	0	0	0	0	0	0	1	1
Reno PD	1	1	9	8	0	1	7	6
Sparks PD	0	0	2	5	0	0	3	1
Storey SO	0	0	0	0	0	0	0	0
TMCC PD	0	0	0	0	0	0	0	0
UNLV PD	0	0	0	0	0	0	0	0
UNR PD	0	0	0	0	0	0	0	0
Washoe SO	0	0	1	0	0	0	2	1
Washoe Co Schl PD	0	0	0	0	0	0	0	0
Wendover PD	0	0	1	1	0	0	0	0
White Pine SO	0	0	0	0	0	0	1	1
Winnemucca PD	0	0	0	0	0	0	1	1
Yerington PD	0	0	0	0	0	0	0	0
TOTALS	13	7	170	98	4	6	173	116

Nevada--Rape--Incidence Level Variation--UCR

November 2002

Agency	November 2002 Offenses	November 2002 Cleared	YTD Offenses	2002 YTD Cleared	November 2001 Offenses	November 2001 Cleared	YTD Offenses	2001 YTD Cleared
Boulder	0	0	0	0	0	0	4	4
Carlin PD	0	0	0	0	0	0	0	0
Carson SO	0	0	29	6	0	0	28	3
Churchill SO	3	0	19	11	2	0	25	18
Clark Co Schl PD	0	0	0	0	0	0	0	0
Douglas SO	0	0	0	0	0	0	0	0
Elko PD	1	0	4	3	0	0	3	2
Elko SO	1	0	6	0	1	0	4	1
Esmeralda SO	0	0	0	0	0	0	0	0
Eureka SO	0	0	0	0	0	0	0	0
Fallon PD	0	0	2	1	0	1	0	1
Henderson PD	3	4	94	36	7	4	92	41
Humboldt SO	0	0	0	0	0	0	3	1
Lander SO	0	0	0	0	0	0	4	1
Lincoln SO	0	0	0	0	0	0	0	0
Lovelock PD	0	0	2	1	0	0	1	0
LV Fire Dept	0	0	0	0	0	0	0	0
LV Metro	42	6	458	153	22	12	425	152
Lyon SO	2	1	8	2	1	0	11	3
Mesquite PD	0	0	0	0	0	0	0	0
Mineral SO	0	0	1	1	0	0	5	3
NLVPD	6	0	48	22	4	3	45	24
Nye SO	0	0	0	0	0	0	0	0
Pershing SO	0	0	3	1	0	0	2	1
Reno PD	11	4	123	20	2	0	93	22
Sparks PD	4	2	49	53	6	4	49	30
Storey SO	0	0	1	1	0	0	0	0
TMCC PD	0	0	0	0	0	0	0	0
UNLV PD	0	0	2	0	1	0	3	2
UNR PD	1	0	3	0	0	0	0	0
Washoe SO	0	0	6	2	0	0	28	12
Washoe Co Schl PD	1	0	1	0	0	0	0	0
Wendover PD	0	0	2	2	0	0	2	1
White Pine SO	0	0	1	1	0	0	2	2
Winnemucca PD	0	0	2	2	0	0	5	3
Yerington PD	0	0	0	0	0	0	0	0
TOTALS	75	17	864	318	46	24	834	327

Nevada--Robbery--Incidence Level Variation--UCR

November 2002

Agency	November 2002 Offenses	November 2002 Cleared	YTD Offenses	2002 YTD Cleared	November 2001 Offenses	November 2001 Cleared	YTD Offenses	2001 YTD Cleared
Boulder	1	0	3	1	0	0	3	3
Carlin PD	0	0	1	0	0	0	1	1
Carson SO	1	0	27	11	3	2	31	14
Churchill SO	0	0	1	0	0	0	0	0
Clark Co Schl PD	3	1	19	7	2	1	19	5
Douglas SO	2	1	11	7	2	2	13	7
Elko PD	0	0	5	0	1	2	8	3
Elko SO	0	0	3	2	0	0	1	1
Esmeralda SO	0	0	0	0	0	0	0	0
Eureka SO	0	0	0	0	1	0	1	0
Fallon PD	0	0	4	1	0	1	3	3
Henderson PD	19	7	173	46	12	5	175	41
Humboldt SO	0	0	0	0	1	0	1	0
Lander SO	0	0	1	0	0	0	0	0
Lincoln SO	0	0	1	0	0	0	0	0
Lovelock PD	0	0	0	0	0	0	0	0
LV Fire Dept	0	0	0	0	0	0	0	0
LV Metro	361	49	3404	612	392	87	3297	561
Lyon SO	0	0	1	0	2	2	7	2
Mesquite PD	0	0	3	1	0	0	5	4
Mineral SO	1	1	2	2	0	0	1	0
NLVPD	34	5	407	70	43	6	375	70
Nye SO	1	1	15	9	1	0	5	4
Pershing SO	0	0	1	0	0	0	0	0
Reno PD	52	18	404	113	38	10	366	96
Sparks PD	7	3	87	41	13	5	79	33
Storey SO	0	0	0	0	0	0	0	0
TMCC PD	0	0	0	0	0	0	0	0
UNLV PD	0	0	4	1	2	1	7	3
UNR PD	0	0	0	0	0	0	0	0
Washoe SO	4	2	15	7	0	0	21	7
Washoe Co Schl PD	1	0	2	0	0	0	0	0
Wendover PD	1	1	2	1	0	0	2	2
White Pine SO	0	0	2	1	0	0	0	0
Winnemucca PD	0	0	1	0	0	0	0	0
Yerington PD	0	0	0	0	0	0	0	0
TOTALS	488	89	4599	933	513	124	4421	860

Nevada--Aggravated Assault--Incidence Level Variation--UCR

November 2002

Agency	November	November	2002 YTD		November	November	2001 YTD	
	2002 Offenses	2002 Cleared	Offenses	Cleared	2001 Offenses	2001 Cleared	Offenses	Cleared
Boulder	5	5	52	40	0	1	53	40
Carlin PD	0	0	9	7	0	0	8	3
Carson SO	30	17	216	112	19	7	220	109
Churchill SO	3	7	38	34	1	0	28	17
Clark Co SchI PD	1	1	29	22	7	4	40	22
Douglas SO	5	3	42	25	5	4	42	30
Elko PD	3	0	21	9	6	3	28	13
Elko SO	1	1	19	12	3	2	26	9
Esmeralda SO	0	0	1	1	0	0	4	4
Eureka SO	0	0	5	2	0	0	14	7
Fallon PD	1	1	14	8	2	1	12	6
Henderson PD	10	6	127	106	16	15	204	120
Humboldt SO	5	3	51	32	1	0	41	31
Lander SO	1	0	32	16	2	2	33	13
Lincoln SO	1	0	3	1	0	0	6	5
Lovelock PD	0	0	4	3	1	0	10	8
LV Fire Dept	0	0	0	0	0	0	0	0
LV Metro	408	131	4208	1690	292	141	2979	1172
Lyon SO	6	6	58	55	2	2	63	61
Mesquite PD	2	1	8	7	1	1	10	8
Mineral SO	0	0	3	3	0	0	11	9
NLVPD	57	30	723	392	69	35	780	385
Nye SO	12	12	105	93	2	2	74	67
Pershing SO	0	0	9	7	0	0	20	5
Reno PD	52	36	861	456	60	29	586	240
Sparks PD	17	15	179	168	17	13	180	134
Storey SO	1	0	26	10	2	1	32	23
TMCC PD	0	0	0	0	0	0	0	0
UNLV PD	0	0	6	5	2	1	6	5
UNR PD	0	0	2	2	1	0	5	0
Washoe SO	22	8	153	64	20	9	146	74
Washoe Co SchI PD	2	2	7	7	1	1	10	11
Wendover PD	0	0	10	8	0	0	5	5
White Pine SO	3	2	24	20	1	1	27	21
Winnemucca PD	0	0	8	6	3	3	11	11
Yerington PD	1	0	9	4	0	0	3	2
TOTALS	649	287	7062	3427	536	278	5717	2670

Nevada--All Assaults--Incidence Level Variation--UCR

November 2002

Agency	November	November	2002 YTD		November	November	2001 YTD	
	2002 Offenses	2002 Cleared	2002 YTD Offenses	2002 YTD Cleared	2001 Offenses	2001 Cleared	2001 YTD Offenses	2001 YTD Cleared
Boulder	11	11	149	56	1	2	149	91
Carlin PD	0	0	17	14	2	1	16	9
Carson SO	74	38	836	451	69	34	768	394
Churchill SO	28	27	221	177	7	5	213	159
Clark Co Schl PD	72	47	782	479	102	49	639	314
Douglas SO	24	21	421	330	32	31	441	383
Elko PD	17	6	226	124	30	14	285	192
Elko SO	2	2	85	58	5	4	63	26
Esmeralda SO	1	1	4	4	0	0	5	5
Eureka SO	0	0	10	4	1	1	18	11
Fallon PD	24	16	201	118	23	17	199	125
Henderson PD	161	95	1971	1497	180	118	2097	1464
Humboldt SO	7	3	58	36	1	0	49	34
Lander SO	3	2	51	25	6	5	71	43
Lincoln SO	5	2	23	14	1	0	25	11
Lovelock PD	2	2	53	51	10	5	54	42
LV Fire Dept	0	0	0	0	0	0	0	0
LV Metro	1756	626	21412	9020	1578	723	18378	8360
Lyon SO	40	37	423	412	21	20	349	338
Mesquite PD	16	12	239	172	9	9	119	110
Mineral SO	1	1	29	29	0	0	56	40
NLVPD	197	107	2541	1474	201	117	2655	1406
Nye SO	60	60	616	571	51	51	580	573
Pershing SO	2	0	26	14	0	0	46	19
Reno PD	359	194	3802	1900	329	152	3346	1543
Sparks PD	116	116	1241	1122	123	113	1351	1122
Storey SO	3	1	28	11	5	2	38	26
TMCC PD	0	0	4	0	0	0	1	1
UNLV PD	1	1	20	17	2	1	37	29
UNR PD	2	0	15	10	2	0	50	13
Washoe SO	60	38	793	517	77	40	814	528
Washoe Co Schl PD	2	2	183	173	14	14	236	234
Wendover PD	3	3	48	36	5	5	66	57
White Pine SO	10	6	80	62	8	6	75	56
Winnemucca PD	8	8	90	82	6	6	102	100
Yerington PD	1	0	11	5	0	0	3	2
TOTALS	3068	1485	36709	19065	2901	1545	33394	17860

Nevada--Burglary--Incidence Level Variation--UCR

November 2002

Agency	November 2002 Offenses	November 2002 Cleared	YTD Offenses	2002 YTD Cleared	November 2001 Offenses	November 2001 Cleared	YTD Offenses	2001 YTD Cleared
Boulder	12	1	82	11	10	10	154	67
Carlin PD	1	0	12	0	0	0	3	1
Carson SO	30	5	363	55	37	3	344	38
Churchill SO	3	1	55	18	6	2	50	14
Clark Co Schl PD	13	0	262	37	29	3	316	49
Douglas SO	17	2	186	42	11	2	174	53
Elko PD	13	2	138	31	9	3	120	34
Elko SO	11	0	121	21	9	0	98	9
Esmeralda SO	0	0	2	1	2	1	4	1
Eureka SO	0	0	3	0	0	0	5	1
Fallon PD	4	0	48	6	2	0	48	7
Henderson PD	106	18	1350	198	113	20	1271	217
Humboldt SO	2	0	38	7	1	1	24	4
Lander SO	1	0	31	4	0	0	24	3
Lincoln SO	2	2	14	5	0	0	9	1
Lovelock PD	1	1	22	15	4	1	35	19
LV Fire Dept	0	0	0	0	0	0	0	0
LV Metro	955	278	10170	2841	945	245	9323	2771
Lyon SO	13	1	142	23	11	2	162	32
Mesquite PD	2	0	16	9	3	1	28	17
Mineral SO	1	0	20	4	4	0	41	8
NLVPD	121	16	1354	126	126	19	1214	120
Nye SO	22	16	371	190	22	11	355	216
Pershing SO	1	0	18	0	1	0	14	2
Reno PD	112	9	1198	126	125	13	1346	186
Sparks PD	43	14	620	188	57	18	535	162
Storey SO	0	0	10	2	0	0	13	0
TMCC PD	0	0	7	0	1	0	8	0
UNLV PD	10	0	79	3	7	0	68	3
UNR PD	2	0	32	0	3	0	51	3
Washoe SO	27	6	377	37	30	1	310	33
Washoe Co Schl PD	3	0	11	1	0	0	10	1
Wendover PD	3	0	29	9	3	1	23	5
White Pine SO	1	1	29	2	2	0	25	1
Winnemucca PD	2	1	63	17	5	1	35	6
Yerington PD	0	0	37	22	2	1	27	12
TOTALS	1534	374	17310	4051	1580	359	16267	4096

Nevada--Larceny--Incidence Level Variation--UCR

November 2002

Agency	November 2002 Offenses	November 2002 Cleared	YTD Offenses	2002 YTD Cleared	November 2001 Offenses	November 2001 Cleared	YTD Offenses	2001 YTD Cleared
Boulder	13	0	136	14	10	10	118	58
Carlin PD	2	1	49	7	10	8	47	12
Carson SO	102	12	1135	143	111	10	1127	118
Churchill SO	7	2	140	28	6	4	127	29
Clark Co Schi PD	51	10	654	79	83	12	662	83
Douglas SO	58	14	599	186	45	10	543	163
Elko PD	29	6	388	71	41	5	470	55
Elko SO	10	1	104	16	11	1	109	9
Esmeralda SO	0	0	2	0	0	0	0	0
Eureka SO	1	0	14	3	2	0	12	2
Fallon PD	30	7	392	59	36	8	328	70
Henderson PD	236	67	2418	570	187	43	2608	571
Humboldt SO	5	2	56	14	4	0	45	10
Lander SO	1	0	48	3	4	0	62	10
Lincoln SO	2	0	21	1	2	1	20	1
Lovelock PD	4	1	34	21	3	1	33	20
LV Fire Dept	0	0	0	0	0	0	0	0
LV Metro	1376	462	21871	6344	1850	611	20536	6320
Lyon SO	32	9	343	69	41	6	507	70
Mesquite PD	20	7	149	75	22	8	95	42
Mineral SO	1	0	18	6	3	0	47	5
NLVPD	241	56	2817	633	249	64	2535	631
Nye SO	37	20	537	281	31	17	398	265
Pershing SO	4	0	59	11	4	1	49	13
Reno PD	797	198	7136	1323	735	151	6714	1353
Sparks PD	148	31	2205	630	206	48	2230	588
Storey SO	2	0	32	3	3	0	34	5
TMCC PD	2	0	14	0	1	0	16	0
UNLV PD	17	0	307	13	34	0	300	17
UNR PD	20	0	136	4	13	0	108	0
Washoe SO	74	11	847	154	86	11	820	201
Washoe Co Schi PD	20	8	137	44	2	2	41	21
Wendover PD	10	5	125	30	5	1	104	24
White Pine SO	7	2	110	13	10	1	121	30
Winnemucca PD	10	4	130	43	10	3	119	54
Yerington PD	1	1	35	25	4	1	36	13
TOTALS	3370	937	43198	10916	3864	1038	41121	10863

Nevada--MV Theft--Incidence Level Variation--UCR

November 2002

Agency	November 2002 Offenses	November 2002 Cleared	YTD Offenses	2001 YTD Cleared	November 2001 Offenses	November 2001 Cleared	YTD Offenses	2001 YTD Cleared
Boulder	1	1	24	14	2	2	23	6
Carlin PD	0	0	5	4	3	3	8	5
Carson SO	15	2	121	18	17	2	103	8
Churchill SO	2	2	25	14	1	1	11	4
Clark Co Schl PD	6	1	46	3	6	1	38	4
Douglas SO	5	4	55	43	5	5	44	34
Elko PD	0	0	25	8	2	1	35	6
Elko SO	1	1	16	11	6	1	24	6
Esmeralda SO	0	0	1	1	0	0	0	0
Eureka SO	1	1	2	2	0	0	1	0
Fallon PD	1	1	22	10	1	0	21	5
Henderson PD	108	7	1035	72	88	5	834	93
Humboldt SO	1	1	12	8	0	0	4	2
Lander SO	1	0	9	1	0	0	1	1
Lincoln SO	0	0	8	4	0	0	3	3
Lovelock PD	0	0	3	3	0	0	3	1
LV Fire Dept	0	0	0	0	0	0	0	0
LV Metro	1039	137	11215	1706	1010	130	9572	1161
Lyon SO	4	2	43	16	4	1	38	12
Mesquite PD	3	3	37	19	4	0	28	2
Mineral SO	0	0	2	1	1	0	3	2
NLVPD	113	11	1409	108	117	4	1166	80
Nye SO	6	4	67	44	4	3	26	19
Pershing SO	0	0	3	0	0	0	7	5
Reno PD	92	10	1014	90	113	13	827	84
Sparks PD	34	5	289	99	13	6	257	91
Storey SO	0	0	5	3	1	0	5	0
TMCC PD	0	0	1	0	0	0	0	0
UNLV PD	10	1	65	4	6	0	34	2
UNR PD	0	0	5	0	2	1	4	1
Washoe SO	20	4	173	26	11	6	148	49
Washoe Co Schl PD	0	0	2	1	0	0	1	0
Wendover PD	1	1	13	6	1	1	5	2
White Pine SO	0	0	7	0	0	0	5	2
Winnemucca PD	2	0	22	5	0	0	17	7
Yerington PD	0	0	3	1	0	0	2	0
TOTALS	1466	199	15784	2345	1418	186	13298	1697

Nevada--Arson--Incidence Level Variation--UCR

November 2002

Agency	November 2002 Offenses	November 2002 Cleared	YTD Offenses	2002 YTD Cleared	November 2001 Offenses	November 2001 Cleared	YTD Offenses	2001 YTD Cleared
Boulder	0	0	3	1	0	0	7	5
Carlin PD	0	0	0	0	0	0	0	0
Carson SO	3	0	17	2	4	1	19	7
Churchill SO	0	0	2	1	0	0	2	1
Clark Co Schl PD	1	0	56	20	7	2	63	16
Douglas SO	2	1	6	4	0	0	0	0
Elko PD	0	0	9	2	1	0	6	2
Elko SO	0	0	1	0	0	0	3	2
Esmeralda SO	0	0	0	0	0	0	0	0
Eureka SO	0	0	1	0	0	0	0	0
Fallon PD	0	0	0	0	0	0	0	0
Henderson PD	12	5	51	14	0	0	30	12
Humboldt SO	0	0	0	0	0	0	1	0
Lander SO	0	0	0	0	0	0	0	0
Lincoln SO	0	0	0	0	0	0	0	0
Lovelock PD	0	0	0	0	0	0	0	0
LV Fire Dept	8	2	132	13	6	0	122	16
LV Metro	12	0	146	0	14	0	129	0
Lyon SO	2	2	5	3	0	0	1	1
Mesquite PD	0	0	0	0	0	0	0	0
Mineral SO	1	1	4	2	0	0	4	2
NLVPD	9	0	62	5	4	0	37	3
Nye SO	2	1	14	8	1	0	7	3
Pershing SO	0	0	0	0	0	0	0	0
Reno PD	9	1	61	10	0	0	41	6
Sparks PD	0	0	0	0	0	0	0	0
Storey SO	0	0	0	0	0	0	0	0
TMCC PD	0	0	0	0	0	0	0	0
UNLV PD	2	0	5	0	0	0	1	0
UNR PD	0	0	1	1	0	0	3	1
Washoe SO	2	0	7	2	2	0	6	0
Washoe CO Scl PD	1	0	5	2	0	0	4	3
Wendover PD	0	0	2	0	2	1	9	4
White Pine SO	0	0	3	2	0	0	4	4
Winnemucca PD	0	0	2	2	0	0	5	1
Yerington PD	0	0	0	0	0	0	0	0
TOTALS	66	13	595	94	41	4	504	89

Nevada--Hate Crimes--UCR

NOVEMBER 2002

AGENCY	OFFENSE	LOCATION	BIAS	VICTIM TYPE / NUMBER	OFFENDER RACE / NUMBER
Reno PD	Destruction/Damage/Vandalism	Residence/Home	Anti-Homosexual	Individual/1	Unknown
Reno PD	Simple Assault	Parking Lot/Garage	Anti-Black	Individual/1	White/1
Las Vegas Metro PD	Destruction/Damage/Vandalism	Church/Synagogue/Temple	Anti-Other Religion	Religious Org.	Unknown
Las Vegas Metro PD	Intimidation	Residence/Home	Anti-Asian/Pacific Islander	Individual/1	White/2
UNR PD	Intimidation	School/College	Anti-Female Homosexual	Individual/1	Unknown

Stolen/Recovered Property Report

November 2002

Property Type	Boulder PD	Carlin PD	Carson SO	Churchill SO	Clark Co SchI PD	Douglas SO	Elko PD	Elko SO	Esmeralda SO
Currency									
Stolen	\$439	\$0	\$6,075	\$1,623	\$227	\$3,564	\$2,853	\$45	\$0
Recovered	\$0	\$0	\$0	\$0	\$0	\$749	\$0	\$0	\$0
% Recovered	0.0%	0.0%	0.0%	0.0%	0.0%	21.0%	0.0%	0.0%	0.0%
Jewelry									
Stolen	\$450	\$0	\$21,646	\$0	\$810	\$4,025	\$1,400	\$2,000	\$0
Recovered	\$0	\$0	\$0	\$0	\$0	\$350	\$0	\$0	\$0
% Recovered	0.0%	0.0%	0.0%	0.0%	0.0%	8.7%	0.0%	0.0%	0.0%
Clothing									
Stolen	\$0	\$0	\$685	\$0	\$100	\$1,546	\$105	\$0	\$0
Recovered	\$0	\$0	\$0	\$0	\$0	\$375	\$0	\$0	\$0
% Recovered	0.0%	0.0%	0.0%	0.0%	0.0%	24.3%	0.0%	0.0%	0.0%
Motor Vehicle									
Stolen	\$30,000	\$0	\$894,607	\$5,500	\$71,850	\$59,175	\$0	\$1,000	\$0
Recovered	\$30,000	\$0	\$43,900	\$5,500	\$52,450	\$21,175	\$0	\$0	\$0
% Recovered	100.0%	0.0%	4.9%	100.0%	73.0%	35.8%	0.0%	0.0%	0.0%
Office Equipment									
Stolen	\$0	\$0	\$799	\$0	\$8,060	\$0	\$1,130	\$0	\$0
Recovered	\$0	\$0	\$0	\$0	\$1,800	\$0	\$200	\$0	\$0
% Recovered	0.0%	0.0%	0.0%	0.0%	22.3%	0.0%	17.7%	0.0%	0.0%
TV, VCR, Camera, Etc.									
Stolen	\$0	\$0	\$9,332	\$0	\$8,340	\$6,064	\$935	\$569	\$0
Recovered	\$0	\$0	\$0	\$0	\$0	\$0	\$125	\$400	\$0
% Recovered	0.0%	0.0%	0.0%	0.0%	0.0%	0.0%	13.4%	70.3%	0.0%
Firearm									
Stolen	\$0	\$150	\$0	\$0	\$0	\$800	\$300	\$3,200	\$0
Recovered	\$0	\$150	\$0	\$0	\$0	\$0	\$0	\$250	\$0
% Recovered	0.0%	100.0%	0.0%	0.0%	0.0%	0.0%	0.0%	7.8%	0.0%
Household Goods									
Stolen	\$0	\$0	\$400	\$0	\$0	\$500	\$0	\$5,166	\$0
Recovered	\$0	\$0	\$0	\$0	\$0	\$0	\$0	\$0	\$0
% Recovered	0.0%	0.0%	0.0%	0.0%	0.0%	0.0%	0.0%	0.0%	0.0%
Consumable Goods									
Stolen	\$0	\$0	\$4	\$270	\$29	\$538	\$393	\$50	\$0
Recovered	\$0	\$0	\$0	\$0	\$0	\$475	\$299	\$0	\$0
% Recovered	0.0%	0.0%	0.0%	0.0%	0.0%	88.3%	76.1%	0.0%	0.0%
Livestock									
Stolen	\$0	\$95	\$0	\$100	\$0	\$0	\$0	\$0	\$0
Recovered	\$0	\$0	\$0	\$100	\$0	\$0	\$0	\$0	\$0
% Recovered	0.0%	0.0%	0.0%	100.0%	0.0%	0.0%	0.0%	0.0%	0.0%
Misc.									
Stolen	\$67,662	\$0	\$40,738	\$919	\$48,951	\$15,883	\$8,611	\$24,697	\$0
Recovered	\$108,506	\$0	\$0	\$0	\$0	\$912	\$359	\$600	\$0
% Recovered	160.4%	0.0%	0.0%	0.0%	0.0%	5.7%	4.2%	2.4%	0.0%
TOTALS									
Stolen	\$98,551	\$245	\$974,286	\$8,412	\$138,367	\$92,095	\$15,727	\$36,727	\$0
Recovered	\$138,506	\$150	\$43,900	\$5,600	\$54,250	\$24,036	\$983	\$1,250	\$0
% Recovered	140.5%	61.2%	4.5%	66.6%	39.2%	26.1%	6.3%	3.4%	0.0%

Stolen/Recovered Property Report

November 2002

Property Type	Eureka SO	Fallon PD	Henderson PD	Humboldt SO	Lander SO	Las Vegas Metro	Lincoln SO	Lovelock PD	Lyon SO
Currency									
Stolen	\$0	\$870	\$50,749	\$2,407	\$0	\$2,069,116	\$45	\$82	\$1,970
Recovered	\$0	\$290	\$14,806	\$0	\$0	\$6,644	\$45	\$0	\$100
% Recovered	0.0%	33.3%	29.2%	0.0%	0.0%	0.3%	100.0%	0.0%	5.1%
Jewelry									
Stolen	\$0	\$575	\$138,771	\$0	\$0	\$1,850,309	\$0	\$0	\$6,945
Recovered	\$0	\$0	\$2,985	\$0	\$0	\$48,450	\$0	\$0	\$0
% Recovered	0.0%	0.0%	2.2%	0.0%	0.0%	2.6%	0.0%	0.0%	0.0%
Clothing									
Stolen	\$0	\$0	\$5,998	\$0	\$0	\$233,531	\$0	\$6,125	\$862
Recovered	\$0	\$0	\$2,750	\$0	\$0	\$19,006	\$0	\$0	\$5
% Recovered	0.0%	0.0%	45.8%	0.0%	0.0%	8.1%	0.0%	0.0%	0.6%
Motor Vehicle									
Stolen	\$2,000	\$2,000	\$1,305,206	\$3,300	\$1	\$4,933,378	\$1,500	\$0	\$11,400
Recovered	\$2,000	\$2,000	\$1,132,022	\$3,000	\$0	\$1,999,269	\$1,500	\$0	\$13,000
% Recovered	100.0%	100.0%	86.7%	90.9%	0.0%	40.5%	100.0%	0.0%	114.0%
Office Equipment									
Stolen	\$0	\$400	\$59,732	\$0	\$0	\$308,943	\$0	\$0	\$0
Recovered	\$0	\$0	\$20	\$0	\$0	\$8,519	\$0	\$0	\$0
% Recovered	0.0%	0.0%	0.0%	0.0%	0.0%	2.8%	0.0%	0.0%	0.0%
TV, VCR, Camera, Etc.									
Stolen	\$0	\$425	\$264,119	\$500	\$0	\$652,742	\$0	\$0	\$1,944
Recovered	\$0	\$0	\$805	\$0	\$0	\$15,321	\$0	\$0	\$569
% Recovered	0.0%	0.0%	0.3%	0.0%	0.0%	2.3%	0.0%	0.0%	29.3%
Firearm									
Stolen	\$0	\$200	\$1,100	\$350	\$0	\$67,572	\$0	\$0	\$500
Recovered	\$0	\$0	\$1,750	\$0	\$0	\$1,305	\$0	\$0	\$0
% Recovered	0.0%	0.0%	159.1%	0.0%	0.0%	1.9%	0.0%	0.0%	0.0%
Household Goods									
Stolen	\$0	\$0	\$3,859	\$0	\$0	\$139,588	\$1	\$0	\$2,400
Recovered	\$0	\$0	\$0	\$0	\$0	\$1,669	\$1	\$0	\$0
% Recovered	0.0%	0.0%	0.0%	0.0%	0.0%	1.2%	100.0%	0.0%	0.0%
Consumable Goods									
Stolen	\$0	\$19	\$10,790	\$420	\$50	\$21,133	\$0	\$0	\$898
Recovered	\$0	\$0	\$331	\$50	\$0	\$6,350	\$0	\$0	\$0
% Recovered	0.0%	0.0%	3.1%	11.9%	0.0%	30.0%	0.0%	0.0%	0.0%
Livestock									
Stolen	\$0	\$0	\$0	\$0	\$0	\$200	\$0	\$0	\$0
Recovered	\$0	\$0	\$0	\$0	\$0	\$0	\$0	\$0	\$600
% Recovered	0.0%	0.0%	0.0%	0.0%	0.0%	0.0%	0.0%	0.0%	0.0%
Misc.									
Stolen	\$177	\$2,306	\$192,549	\$30,030	\$600	\$2,511,537	\$170	\$700	\$24,759
Recovered	\$0	\$170	\$7,217	\$0	\$0	\$37,496	\$0	\$110	\$13,782
% Recovered	0.0%	7.4%	3.7%	0.0%	0.0%	1.5%	0.0%	15.7%	55.7%
TOTALS									
Stolen	\$2,177	\$6,795	\$2,032,873	\$37,007	\$651	\$12,788,049	\$1,716	\$6,907	\$51,678
Recovered	\$2,000	\$2,460	\$1,162,686	\$3,050	\$0	\$2,144,029	\$1,546	\$110	\$28,056
% Recovered	91.9%	36.2%	57.2%	8.2%	0.0%	16.8%	90.1%	1.6%	54.3%

Stolen/Recovered Property Report

November 2002

Property Type	Mesquite PD	Mineral SO	NLVPD	Nye SO	Pershing SO	Reno PD	Sparks PD	Storey SO	TMCC PD	UNLV PD
Currency										
Stolen	\$2,400	\$2,000	\$37,196	\$300	\$0	\$31,087	\$7,573	\$0	\$79	\$855
Recovered	\$0	\$2,000	\$988	\$0	\$0	\$311	\$23	\$0	\$0	\$0
% Recovered	0.0%	100.0%	2.7%	0.0%	0.0%	1.0%	0.3%	0.0%	0.0%	0.0%
Jewelry										
Stolen	\$0	\$0	\$117,406	\$0	\$0	\$75,080	\$9,410	\$0	\$0	\$1,430
Recovered	\$0	\$0	\$111	\$0	\$0	\$680	\$5,665	\$0	\$0	\$0
% Recovered	0.0%	0.0%	0.1%	0.0%	0.0%	0.9%	60.2%	0.0%	0.0%	0.0%
Clothing										
Stolen	\$0	\$0	\$12,334	\$250	\$0	\$15,470	\$3,792	\$0	\$0	\$2,090
Recovered	\$0	\$0	\$243	\$0	\$0	\$1,222	\$239	\$0	\$0	\$0
% Recovered	0.0%	0.0%	2.0%	0.0%	0.0%	7.9%	6.3%	0.0%	0.0%	0.0%
Motor Vehicle										
Stolen	\$3,000	\$0	\$862,250	\$40,700	\$0	\$464,599	\$233,110	\$0	\$0	\$54,900
Recovered	\$3,000	\$0	\$846,395	\$35,000	\$0	\$459,779	\$173,900	\$0	\$0	\$42,000
% Recovered	100.0%	0.0%	98.2%	86.0%	0.0%	99.0%	74.6%	0.0%	0.0%	76.5%
Office Equipment										
Stolen	\$30	\$0	\$3,536	\$250	\$0	\$35,493	\$4,630	\$0	\$0	\$0
Recovered	\$0	\$0	\$10	\$50	\$0	\$1,327	\$0	\$0	\$0	\$0
% Recovered	0.0%	0.0%	0.3%	20.0%	0.0%	3.7%	0.0%	0.0%	0.0%	0.0%
TV, VCR, Camera, Etc.										
Stolen	\$0	\$0	\$123,025	\$2,500	\$817	\$71,675	\$35,462	\$518	\$2,371	\$8,600
Recovered	\$0	\$0	\$3,026	\$1,000	\$0	\$1,809	\$4,032	\$0	\$110	\$0
% Recovered	0.0%	0.0%	2.5%	40.0%	0.0%	2.5%	11.4%	0.0%	4.6%	0.0%
Firearm										
Stolen	\$0	\$0	\$3,775	\$1,500	\$0	\$12,233	\$4,000	\$0	\$0	\$0
Recovered	\$0	\$0	\$300	\$500	\$0	\$450	\$19,450	\$0	\$0	\$0
% Recovered	0.0%	0.0%	7.9%	33.3%	0.0%	3.7%	486.3%	0.0%	0.0%	0.0%
Household Goods										
Stolen	\$0	\$0	\$9,192	\$450	\$0	\$5,347	\$84,102	\$0	\$0	\$0
Recovered	\$0	\$0	\$512	\$200	\$0	\$42	\$471	\$0	\$0	\$0
% Recovered	0.0%	0.0%	5.6%	44.4%	0.0%	0.8%	0.6%	0.0%	0.0%	0.0%
Consumable Goods										
Stolen	\$0	\$0	\$1,957	\$0	\$30	\$2,420	\$570	\$0	\$0	\$0
Recovered	\$0	\$0	\$937	\$0	\$0	\$490	\$78	\$0	\$0	\$0
% Recovered	0.0%	0.0%	47.9%	0.0%	0.0%	20.2%	13.7%	0.0%	0.0%	0.0%
Livestock										
Stolen	\$0	\$0	\$0	\$0	\$0	\$0	\$0	\$0	\$0	\$0
Recovered	\$0	\$0	\$0	\$0	\$0	\$0	\$0	\$0	\$0	\$0
% Recovered	0.0%	0.0%	0.0%	0.0%	0.0%	0.0%	0.0%	0.0%	0.0%	0.0%
Misc.										
Stolen	\$1,287	\$150	\$161,867	\$11,311	\$495	\$308,400	\$16,110	\$0	\$391	\$7,105
Recovered	\$27	\$0	\$1,722	\$6,284	\$0	\$8,918	\$1,490	\$0	\$0	\$0
% Recovered	2.1%	0.0%	1.1%	55.6%	0.0%	2.9%	9.2%	0.0%	0.0%	0.0%
TOTALS										
Stolen	\$6,717	\$2,150	\$1,332,538	\$57,261	\$1,342	\$1,021,804	\$398,759	\$518	\$2,841	\$74,980
Recovered	\$3,027	\$2,000	\$854,244	\$43,034	\$0	\$475,028	\$205,348	\$0	\$110	\$42,000
% Recovered	45.1%	93.0%	64.1%	75.2%	0.0%	46.5%	51.5%	0.0%	3.9%	56.0%

Stolen/Recovered Property Report

November 2002

Property Type	UNR PD	Washoe SO	Washoe Co Schl PD	Wendover PD	White Pine SO	Winnemucca PD	Yerington PD	Total By Property
Currency								
Stolen	\$471	\$5,611	\$240	\$91	\$130	\$1,065	\$0	\$2,229,163
Recovered	\$0	\$0	\$0	\$0	\$0	\$380	\$0	\$26,336
% Recovered	0.0%	0.0%	0.0%	0.0%	0.0%	35.7%	0.0%	1.2%
Jewelry								
Stolen	\$0	\$37,213	\$400	\$0	\$0	\$0	\$0	\$2,267,870
Recovered	\$0	\$750	\$0	\$0	\$0	\$0	\$0	\$58,991
% Recovered	0.0%	2.0%	0.0%	0.0%	0.0%	0.0%	0.0%	2.6%
Clothing								
Stolen	\$40	\$5,618	\$449	\$0	\$0	\$25	\$0	\$289,020
Recovered	\$0	\$0	\$259	\$0	\$0	\$25	\$0	\$24,124
% Recovered	0.0%	0.0%	57.7%	0.0%	0.0%	100.0%	0.0%	8.3%
Motor Vehicle								
Stolen	\$0	\$284,059	\$0	\$10,000	\$0	\$27,000	\$0	\$9,300,535
Recovered	\$0	\$188,500	\$0	\$10,000	\$0	\$27,000	\$0	\$5,091,390
% Recovered	0.0%	66.4%	0.0%	100.0%	0.0%	100.0%	0.0%	54.7%
Office Equipment								
Stolen	\$0	\$2,580	\$824	\$0	\$0	\$0	\$0	\$426,407
Recovered	\$0	\$0	\$0	\$0	\$0	\$0	\$0	\$11,926
% Recovered	0.0%	0.0%	0.0%	0.0%	0.0%	0.0%	0.0%	2.8%
TV, VCR, Camera, Etc.								
Stolen	\$6,915	\$12,126	\$630	\$829	\$0	\$0	\$0	\$1,210,438
Recovered	\$0	\$0	\$0	\$0	\$0	\$0	\$0	\$27,197
% Recovered	0.0%	0.0%	0.0%	0.0%	0.0%	0.0%	0.0%	2.2%
Firearm								
Stolen	\$0	\$1,921	\$0	\$1,150	\$0	\$0	\$0	\$98,751
Recovered	\$0	\$0	\$0	\$0	\$0	\$0	\$0	\$24,155
% Recovered	0.0%	0.0%	0.0%	0.0%	0.0%	0.0%	0.0%	24.5%
Household Goods								
Stolen	\$0	\$8,195	\$0	\$0	\$0	\$0	\$0	\$259,200
Recovered	\$0	\$0	\$0	\$0	\$0	\$0	\$0	\$2,895
% Recovered	0.0%	0.0%	0.0%	0.0%	0.0%	0.0%	0.0%	1.1%
Consumable Goods								
Stolen	\$0	\$705	\$0	\$40	\$66	\$0	\$0	\$40,382
Recovered	\$0	\$42	\$0	\$20	\$36	\$0	\$0	\$9,108
% Recovered	0.0%	6.0%	0.0%	50.0%	54.5%	0.0%	0.0%	22.6%
Livestock								
Stolen	\$0	\$0	\$0	\$0	\$0	\$0	\$0	\$395
Recovered	\$0	\$0	\$0	\$0	\$0	\$0	\$0	\$700
% Recovered	0.0%	0.0%	0.0%	0.0%	0.0%	0.0%	0.0%	177.2%
Misc.								
Stolen	\$3,290	\$61,847	\$1,349	\$215	\$374	\$2,957	\$0	\$3,547,437
Recovered	\$0	\$0	\$549	\$53	\$0	\$217	\$0	\$188,412
% Recovered	0.0%	0.0%	40.7%	0.0%	0.0%	7.3%	0.0%	5.3%
TOTALS								
Stolen	\$10,716	\$419,875	\$3,892	\$12,325	\$570	\$31,047	\$0	\$19,669,598
Recovered	\$0	\$189,292	\$808	\$10,073	\$36	\$27,622	\$0	\$5,465,234
% Recovered	0.0%	45.1%	20.8%	81.7%	6.3%	89.0%	0.0%	27.8%

Nevada--Assaults on Officers by Agency--UCR

November 2002

Agency	November 2002				November 2001			
	Offenses	November 2002 Cleared	2002 YTD Offenses	2002 YTD Cleared	Offenses	November 2001 Cleared	2001 YTD Offenses	2001 YTD Cleared
Boulder	0	0	0	0	0	0	2	2
Carlin PD	0	0	3	3	0	0	2	2
Carson SO	0	0	9	8	4	4	16	16
Churchill SO	4	4	7	7	1	1	4	4
ClrkSchIDst PD	0	0	0	0	0	0	0	0
Douglas SO	0	0	5	5	0	0	4	4
Elko PD	0	0	4	4	0	0	0	0
Elko SO	0	0	0	0	0	0	0	0
Esmeralda SO	0	0	0	0	0	0	0	0
Eureka SO	0	0	0	0	0	0	0	0
Fallon PD	0	0	0	0	0	0	3	3
Henderson PD	3	3	27	27	2	2	32	32
Highway Patrol	1	1	19	19	3	3	18	18
Humboldt SO	0	0	3	3	0	0	0	0
Lander SO	0	0	0	0	0	0	0	0
Lincoln SO	0	0	0	0	0	0	0	0
Lovelock PD	0	0	0	0	0	0	0	0
LV Fire Dept	0	0	0	0	0	0	0	0
LV Metro	23	23	275	275	17	17	244	244
Lyon SO	2	2	7	7	1	1	7	7
Mesquite PD	0	0	0	0	0	0	0	0
Mineral SO	0	0	3	3	0	0	0	0
NV Div Investigations	0	0	0	0	0	0	0	0
NLVPD	8	8	69	69	2	2	38	37
Nye SO	1	1	14	14	1	1	5	5
Pershing SO	0	0	0	0	0	0	0	0
Reno PD	1	1	5	5	0	0	9	9
Sparks PD	0	0	4	4	0	0	7	7
Storey SO	0	0	0	0	0	0	0	0
TMCC PD	0	0	0	0	0	0	0	0
UNLV PD	1	1	4	4	1	1	10	9
UNR PD	0	0	0	0	0	0	0	0
Washoe SO	0	0	14	12	1	1	10	9
Washoe Co SchI PD	0	0	3	3	0	0	1	1
Wendover PD	0	0	1	1	0	0	2	2
White Pine SO	0	0	1	1	0	0	1	1
Winnemucca PD	0	0	3	3	0	0	6	6
Yerington PD	0	0	0	0	0	0	0	0
TOTALS	44	44	480	477	33	33	421	418

Nevada -- Assaults by Agency/Weapon/Assignment -- UCR

NOVEMBER 2002

Table 16

Agency	Total Assaults	Number Cleared	Firearm	Knife / Cutting Device	Other Danger. Weapon	Hands, Fists, Feet, Etc.	2-Officer Vehicle	1-Officer Vehicle- Alone	1-Officer Vehicle- Assisted	Det./Spec. Assign. - Alone	Det./Spec. Assign. - Assisted	Other- Alone	Other- Assisted
Boulder City PD	0	0	0	0	0	0	0	0	0	0	0	0	0
Carlin PD	0	0	0	0	0	0	0	0	0	0	0	0	0
Carson City SO	0	0	0	0	0	0	0	0	0	0	0	0	0
Churchill Co SO	4	4	0	0	0	4	0	0	0	0	0	0	4
Clark School Dist PD	0	0	0	0	0	0	0	0	0	0	0	0	0
Douglas Co SO	0	0	0	0	0	0	0	0	0	0	0	0	0
Elko PD	0	0	0	0	0	0	0	0	0	0	0	0	0
Elko Co SO	0	0	0	0	0	0	0	0	0	0	0	0	0
Esmeralda Co SO	0	0	0	0	0	0	0	0	0	0	0	0	0
Eureka Co SO	0	0	0	0	0	0	0	0	0	0	0	0	0
Fallon PD	0	0	0	0	0	0	0	0	0	0	0	0	0
Henderson PD	3	3	0	0	0	3	2	0	0	0	0	0	1
NV Highway Patrol	1	1	0	0	0	1	0	0	1	0	0	0	0
Humboldt Co SO	0	0	0	0	0	0	0	0	0	0	0	0	0
Lander Co SO	0	0	0	0	0	0	0	0	0	0	0	0	0
Lincoln Co SO	0	0	0	0	0	0	0	0	0	0	0	0	0
Lovelock PD	0	0	0	0	0	0	0	0	0	0	0	0	0
Las Vegas Fire Dept	0	0	0	0	0	0	0	0	0	0	0	0	0
Las Vegas Metro PD	23	23	0	0	3	20	11	4	3	1	1	2	1
Lyon Co SO	2	2	0	0	0	2	0	0	2	0	0	0	0
Mesquite PD	0	0	0	0	0	0	0	0	0	0	0	0	0
Mineral Co SO	0	0	0	0	0	0	0	0	0	0	0	0	0
NV Div of Investigations	0	0	0	0	0	0	0	0	0	0	0	0	0
North Las Vegas PD	8	8	0	0	1	7	5	1	2	0	0	0	0
Nye Co SO	1	1	0	0	0	1	0	0	1	0	0	0	0
Pershing Co SO	0	0	0	0	0	0	0	0	0	0	0	0	0
Reno PD	1	1	0	0	0	1	0	1	0	0	0	0	0
Sparks PD	0	0	0	0	0	0	0	0	0	0	0	0	0
Storey Co SO	0	0	0	0	0	0	0	0	0	0	0	0	0
TMCC PD	0	0	0	0	0	0	0	0	0	0	0	0	0
UNLV PD	1	1	0	0	0	1	0	0	1	0	0	0	0
UNR PD	0	0	0	0	0	0	0	0	0	0	0	0	0
Washoe Co SO	0	0	0	0	0	0	0	0	0	0	0	0	0
Washoe Co School PD	0	0	0	0	0	0	0	0	0	0	0	0	0
West Wendover PD	0	0	0	0	0	0	0	0	0	0	0	0	0
White Pine Co SO	0	0	0	0	0	0	0	0	0	0	0	0	0
Winnemucca PD	0	0	0	0	0	0	0	0	0	0	0	0	0
Yerington PD	0	0	0	0	0	0	0	0	0	0	0	0	0
TOTALS	44	44	0	0	4	40	18	6	10	1	1	2	6

28

Nevada -- Officer Assaults by Activity/Weapon/Assignment -- UCR

NOVEMBER 2002

Table 17

ACTIVITY TYPE	Total Assaults	Number Cleared	Firearm	Knife / Cutting Device	Other Danger. Weapon	Hands, Fists, Feet, Etc.	2-Officer Vehicle	1-Officer Vehicle- Alone	1-Officer Vehicle- Assisted	Det./Spec. Assign.- Alone	Det./Spec. Assign.- Assisted	Other- Alone	Other- Assisted
DOMESTIC / OTHER DISTURBANCE	13	13	0	0	1	12	8	3	1	0	0	0	1
BURGLARY IN PROGRESS	0	0	0	0	0	0	0	0	0	0	0	0	0
ROBBERY IN PROGRESS	0	0	0	0	0	0	0	0	0	0	0	0	0
ATTEMPTING OTHER ARREST	0	0	0	0	0	0	0	0	0	0	0	0	0
CIVIL DISORDER	0	0	0	0	0	0	0	0	0	0	0	0	0
HANDLING PRISONER	10	10	0	0	0	10	0	2	2	0	0	1	5
INVEST. SUSP. PERSONS / CIRCUM.	6	6	0	0	0	6	5	0	1	0	0	0	0
AMBUSH-NO WARNING	1	1	0	0	0	1	0	0	1	0	0	0	0
MENTALLY DERANGED	0	0	0	0	0	0	0	0	0	0	0	0	0
TRAFFIC PURSUITS / STOPS	6	6	0	0	2	4	4	0	2	0	0	0	0
ALL OTHER	8	8	0	0	1	7	1	1	3	1	1	1	0
TOTALS	44	44	0	0	4	40	18	6	10	1	1	2	6

29

Nevada--Assaults with Injury/without Injury--UCR

NOVEMBER 2002

Agency	Total Assaults by weapon		Firearm		Cutting Instruments		Other Dangerous weapons		Hands, Fists, Feet, Etc.	
	With personal injury	Without personal injury	With personal injury	Without personal injury	With personal injury	Without personal injury	With personal injury	Without personal injury	With personal injury	Without personal injury
Boulder City PD	0	0	0	0	0	0	0	0	0	0
Carlin PD	0	0	0	0	0	0	0	0	0	0
Carson City SO	0	0	0	0	0	0	0	0	0	0
Churchill Co SO	4	2	2	0	0	0	0	0	2	2
Clark Co Schl Dist PD	0	0	0	0	0	0	0	0	0	0
Douglas Co SO	0	0	0	0	0	0	0	0	0	0
Elko Co SO	0	0	0	0	0	0	0	0	0	0
Elko PD	0	0	0	0	0	0	0	0	0	0
Esmeralda Co SO	0	0	0	0	0	0	0	0	0	0
Eureka Co SO	0	0	0	0	0	0	0	0	0	0
Fallon PD	0	0	0	0	0	0	0	0	0	0
Henderson PD	3	3	0	0	0	0	0	0	3	0
NV Highway Patrol	1	0	1	0	0	0	0	0	0	1
Humboldt Co SO	0	0	0	0	0	0	0	0	0	0
Lander Co SO	0	0	0	0	0	0	0	0	0	0
Las Vegas Metro PD	23	0	23	0	0	0	0	3	0	20
Lincoln Co SO	0	0	0	0	0	0	0	0	0	0
Lovelock PD	0	0	0	0	0	0	0	0	0	0
Lyon Co SO	2	0	2	0	0	0	0	0	0	2
Mesquite PD	0	0	0	0	0	0	0	0	0	0
Mineral Co SO	0	0	0	0	0	0	0	0	0	0
NV Div Investigations	0	0	0	0	0	0	0	0	0	0
North Las Vegas PD	8	1	7	0	0	0	0	1	1	6
Nye Co SO	1	0	1	0	0	0	0	0	0	1
Pershing Co SO	0	0	0	0	0	0	0	0	0	0
Reno PD	1	0	1	0	0	0	0	0	0	1
Sparks PD	0	0	0	0	0	0	0	0	0	0
Storey Co SO	0	0	0	0	0	0	0	0	0	0
TMCC PD	0	0	0	0	0	0	0	0	0	0
UNLV PD	1	1	0	0	0	0	0	0	1	0
UNR PD	0	0	0	0	0	0	0	0	0	0
Washoe Co SO	0	0	0	0	0	0	0	0	0	0
Washoe Co School Dist.	0	0	0	0	0	0	0	0	0	0
West Wendover PD	0	0	0	0	0	0	0	0	0	0
White Pine Co SO	0	0	0	0	0	0	0	0	0	0
Winnemucca PD	0	0	0	0	0	0	0	0	0	0
Yerington PD	0	0	0	0	0	0	0	0	0	0
Totals	44	7	37	0	0	0	0	4	7	33

Nevada--Time of Assaults on Officers--UCR

November 2002

Agency	2:00 AM	4:00 AM	6:00 AM	8:00 AM	10:00 AM	12:00 AM	12:01- 2:00 PM	2:00- 4:00 PM	4:00- 6:00 PM	6:00- 8:00 PM	10:00 PM	10:00- 12:00 PM
Boulder City PD	0	0	0	0	0	0	0	0	0	0	0	0
Carlin PD	0	0	0	0	0	0	0	0	0	0	0	0
Carson City SO	0	0	0	0	0	0	0	0	0	0	0	0
Churchill Co SO	0	0	0	0	0	0	0	0	0	4	0	0
Clark Co Schl Dist PD	0	0	0	0	0	0	0	0	0	0	0	0
Douglas Co SO	0	0	0	0	0	0	0	0	0	0	0	0
Elko Co SO	0	0	0	0	0	0	0	0	0	0	0	0
Elko PD	0	0	0	0	0	0	0	0	0	0	0	0
Esmeralda Co SO	0	0	0	0	0	0	0	0	0	0	0	0
Eureka Co SO	0	0	0	0	0	0	0	0	0	0	0	0
Fallon PD	0	0	0	0	0	0	0	0	0	0	0	0
Henderson PD	0	0	1	2	0	0	0	0	0	0	0	0
Highway Patrol	0	0	0	0	0	0	1	0	0	0	0	0
Humbolt Co SO	0	0	0	0	0	0	0	0	0	0	0	0
Lander Co SO	0	0	0	0	0	0	0	0	0	0	0	0
Las Vegas Metro PD	3	0	2	0	5	0	0	5	1	1	2	4
Lincoln Co SO	0	0	0	0	0	0	0	0	0	0	0	0
Lovelock PD	0	0	0	0	0	0	0	0	0	0	0	0
Lyon Co SO	0	0	0	0	1	0	0	0	0	1	0	0
Mesquite PD	0	0	0	0	0	0	0	0	0	0	0	0
Mineral Co SO	0	0	0	0	0	0	0	0	0	0	0	0
NV Div Investigations	0	0	0	0	0	0	0	0	0	0	0	0
North LV PD	2	0	0	0	2	0	0	0	1	0	0	3
Nye Co SO	1	0	0	0	0	0	0	0	0	0	0	0
Pershing Co SO	0	0	0	0	0	0	0	0	0	0	0	0
Reno PD	0	1	0	0	0	0	0	0	0	0	0	0
Sparks PD	0	0	0	0	0	0	0	0	0	0	0	0
Storey Co SO	0	0	0	0	0	0	0	0	0	0	0	0
TMCC PD	0	0	0	0	0	0	0	0	0	0	0	0
UNLV PD	1	0	0	0	0	0	0	0	0	0	0	0
UNR PD	0	0	0	0	0	0	0	0	0	0	0	0
Washoe Co SO	0	0	0	0	0	0	0	0	0	0	0	0
Washoe Co Schl PD	0	0	0	0	0	0	0	0	0	0	0	0
West Wendover PD	0	0	0	0	0	0	0	0	0	0	0	0
White Pine Co SO	0	0	0	0	0	0	0	0	0	0	0	0
Winnemucca PD	0	0	0	0	0	0	0	0	0	0	0	0
Yerington PD	0	0	0	0	0	0	0	0	0	0	0	0
Totals	7	1	3	2	8	0	1	5	2	6	2	7

Nevada -- Highway Patrol DUI Arrests -- UCR

November 2002

		10- 13-										25- 30- 35- 40- 45- 50- 55- 60-										Age		Total	
		<10	12	14	15	16	17	18	19	20	21	22	23	24	29	34	39	44	49	54	59	64	>64		Unknown
Carson City	M																		1						1
	F																								0
Churchill	M																								0
	F																								0
Clark	M																								0
	F																								0
Douglas	M																								0
	F																								0
Elko	M													1	2	1	1			1					6
	F																1								1
Esmeralda	M															1	2								3
	F																								0
Eureka	M																								0
	F																								0
Humboldt	M																								0
	F																								0
Lander	M														1		1			1					3
	F																					1			1
Lincoln	M																								0
	F																								0
Lyon	M																								0
	F																								0
Mineral	M																	1							1
	F																1								1
Nye	M																								0
	F																								0
Pershing	M																								0
	F																								0
Storey	M																								0
	F																								0
Washoe	M	1						2		3	1	2	2	2	1	5	1	4		1	2		2	29	
	F						1		1				2	2	2	1		1						10	
White Pine	M																1					1		2	
	F																							0	
Unknown	M						1	2		2	4	3	2	12	8	5	9	8	4	4	6	3	1	74	
County*	F							1						2		4	4	2						13	
Total		1	0	0	0	0	0	1	6	0	6	5	5	4	19	14	18	21	16	6	7	9	4	3	145

*Due to error in reporting

Nevada -- Highway Patrol Drug Arrests -- UCR

November 2002

		10- 13-										25- 30- 35- 40- 45- 50- 55- 60-										Age		Total	
		<10	12	14	15	16	17	18	19	20	21	22	23	24	29	34	39	44	49	54	59	64	>64		Unknown
Carson City	M																								0
	F																								0
Churchill	M																								0
	F																								0
Clark	M																								0
	F																								0
Douglas	M																								0
	F																								0
Elko	M																								0
	F																								0
Esmeralda	M											1					2								3
	F									1															1
Eureka	M																								0
	F																								0
Humboldt	M																								0
	F																								0
Lander	M																								0
	F																								0
Lincoln	M																								0
	F																								0
Lyon	M																								0
	F																								0
Mineral	M																								0
	F																								0
Nye	M																								0
	F																								0
Pershing	M																								0
	F																								0
Storey	M																								0
	F																								0
Washoe	M						1	2				1		6	1	1	1	1							14
	F					1								2	1										4
White Pine	M													1											1
	F																								0
Unknown	M							1						6											7
County*	F														1		1								2
Total		0	0	0	0	1	0	1	3	0	1	0	2	0	15	3	1	4	1	0	0	0	0	0	32

*Due to error in reporting

Nevada -- Division Of Investigations Arrests for Narcotics Violations

November 2002

																					Total	W	B	A	I											
		10-11	12	13-14	15	16	17	18	19	20	21	22	23	24	25-26	29-30	31-32	33-34	35-36	37-38	39-40	41-42	43-44	45-46	47-48	49-50	51-52	53-54	55-56	57-58	59-60	61-62	63-64	>64		
SALES/MANUFACTURING VIOLATIONS																																				
Opium or cocaine and their derivatives (morphine, heroin, codeine)	M											1			2																				3	
	F																																			0
Marijuana	M																																			0
	F																																			0
Synthetic narcotics- Manufactured narcotics that can cause true drug addiction (demerol, meth)	M					1		1					1		2	2	1		3																11	
	F																																			0
Other dangerous, non-narcotic, drugs (barbituates, benzderine)	M																								1										1	
	F																																			0
Sub-Total	M	0	0	0	0	0	1	0	1	0	0	1	1	0	4	2	1	0	4	0	0	0	0	0	0	0	0	0	0	0	0	0	0	0	15	
	F	0	0	0	0	0	0	0	0	0	0	0	0	0	0	0	0	0	0	0	0	0	0	0	0	0	0	0	0	0	0	0	0	0	0	
POSSESSION VIOLATIONS																																				
Opium or cocaine and their derivatives (morphine, heroin, codeine)	M																																		0	
	F																																			0
Marijuana	M																																			0
	F																																			0
Synthetic narcotics- Manufactured narcotics that can cause true drug addiction (demerol, meth)	M				1		1	1	1	1					1	7		2	2																17	
	F						1											2																		3
Other dangerous, non-narcotic, drugs (barbituates, benzderine)	M																																			0
	F																																			0
Sub-Total	M	0	0	0	0	1	0	0	1	1	1	1	0	0	1	7	0	2	2	0	0	0	0	0	0	0	0	0	0	0	0	0	0	0	17	
	F	0	0	0	0	0	0	1	0	0	0	0	0	0	0	0	0	2	0	0	0	0	0	0	0	0	0	0	0	0	0	0	0	0	3	
Total		0	0	0	0	1	1	1	2	1	1	2	1	0	5	9	1	4	6	0	0	0	0	0	0	0	0	0	0	0	0	0	0	0	35	
																																			34	
																																				1
																																				0
																																				0

Nevada UCR
*Footnotes / Exceptions

November 2002

Table 1

--Nevada figures are annualized projections.

--"Assault" does not include simple assaults to allow direct comparison between the Nevada rate and the National rate for this Index offense. See Table 8 for a count of all assaults.

Table 2

--The LV Fire Department reports "Arson" offenses for the City of Las Vegas. The population figure for this agency represents jurisdiction and is not added to the county total. Similarly, the School District Police Departments in Clark and Washoe Counties are not added to county population estimates as they represent persons served (student enrollment plus staff.)

--Assault data in this table includes ALL assaults (aggravated and simple) reported for the current month.

--County crime rates are calculated following subtraction of populations of jurisdictions failing to report.

Table 3

-- In the "Nevada vs National Index Crime and Clearance Rates" sections, the "Assaults" numbers do not include simple assaults following FBI guidelines. Therefore, they may be compared directly to National rates.

-- National crime rate figures are the latest available for comparative use (2000). Nevada figures are annualized projections.

Table 13

--At various times, property values recovered will exceed values stolen for the current reporting period.

General Notes:

■ The following agency(ies) was unable to submit reports for this month: All agencies reported.

-- Any late reports not submitted in time for this publication will be incorporated in to the year-to-date totals in subsequent reports.