

Disclaimer: The following information is preliminary and cannot be certified until it is published in the annual report, Crime and Justice in Nevada that will be available after July 1, 2003.

UNIFORM CRIME REPORTING PROGRAM
UCR STATISTICAL DATA VERIFICATION FORM

As an agency administrator or designee for the _____, I have
(Name of Agency)
reviewed the UCR monthly statistics for **August 2002** which includes all UCR data submitted
year to date. Based upon my or my designee's review and validation of same, I find that:

All data contained in the report for my agency is accurate and complete and may be
released and made part of UCR publications for future distribution to the public and other
interested UCR data subscribers.

Data contained in the report is inaccurate or incomplete and may not be published or
released at this time. (If this choice is selected, please provide the reason in the space
provided below.)

Reason: _____

The corrected data will be supplied to the UCR Program by: _____.
(Date)

This document must be signed and mailed to the Uniform Crime Reporting Program, 808 W.
Nye Lane, Carson City, Nevada 89703 or faxed to (775) 687-1843 by **May 20, 2003**.

Signature of Agency Administrator (or designee)

Name/Title of Agency Administrator (print or type)

Agency's Name/Location

Date

Department of Public Safety
Nevada Highway Patrol
Records and Identification Bureau

Monthly Report



AUGUST

2002

**Richard Kirkland, Director
Department of Public Safety**

**Colonel David Hosmer, Chief
Nevada Highway Patrol**

**Daryl Riersgard, Manager
Records and Identification Bureau**

Tenna Herman, Management Analyst I

**Prepared by:
Records and Identification Bureau
Uniform Crime Reporting
808 W. Nye Lane
Carson City, Nevada 89703
(775) 687-1600**

Nevada UCR Definitions / Explanations

Uniform Crime Reporting Program

The UCR program is a nationwide, cooperative, statistical effort by over 17,000 city, county and state law enforcement agencies that voluntarily report data on crimes brought to their attention. Law enforcement agencies active in the national program represent 95% of the total population of the United States. While the program's primary objective is to generate a reliable set of crime statistics for use in law enforcement administration, operation and management, its data has over the years become one of the country's leading social indicators.

In Nevada, 36 agencies are currently reporting UCR data to the statewide program representing nearly 99% of its population. Rather than submitting directly to the FBI, local agencies must submit crime data to the state UCR Repository, which compiles, analyzes and submits copies of the reports to the FBI. The Nevada UCR Program prides itself on its responsiveness to local contributing agencies that previously received limited feedback for their efforts. The Nevada program is also responsible for producing and distributing periodic reports of the information contained in its database. As its database has grown, the program's utility has become even more apparent.

Eight offenses serve as an index for gauging fluctuations in overall volumes and rates of crime. Known collectively as the " Crime Index, " these offenses include *the violent crimes of murder, rape, robbery and assault and the property crimes of burglary, larceny, motor vehicle theft and arson*. These offenses were selected as a grouped measuring device because they represent the most common crime problems. They are all serious crimes; either by their very nature or due to the volume and frequency with which they occur.

Index Crimes Definitions

Murder and Non-negligent Manslaughter

Murder and non negligent manslaughter, as defined in the Uniform Crime Reporting Program, is the willful (non-negligent) killing of a human being by another.

The classification of this offense, as for all other Crime Index offenses, is based solely on police investigation as opposed to the determination of a court, medical examiner, coroner, jury or other judicial entity. Not included in the count for this offense classification are deaths caused by negligence, suicide or accident, justifiable homicides and attempts to murder or assaults to murder. These are scored as aggravated assaults.

Nevada UCR Definitions / Explanations

Forcible Rape

Forcible rape, as defined in the program, is the carnal knowledge of a female forcibly and against her will. Assaults or attempts to commit rape by force or threat of force are also included; however, statutory rape (without force) and other sex offenses are excluded.

Robbery

Robbery is the taking or attempting to take anything of value from the care, custody or control of a person or persons by force or threat of force or violence and/or by putting the victim in fear.

Aggravated Assault

Aggravated assault is an unlawful attack by one person upon another for the purpose of inflicting severe or aggravated bodily injury. This type of assault is usually accompanied by the use of a weapon or by means likely to produce death or great bodily harm. Attempts are included since it is not necessary that an injury result when a gun, knife or other weapon is used which could and probably would result in serious personal injury if the crime were successfully completed

Burglary

The Uniform Crime Reporting Program defines burglary as the unlawful entry of a structure to commit a felony or theft. The use of force to gain entry is not required to classify an offense as burglary. Burglary in this program is categorized into three sub classifications: forcible entry, unlawful entry where no force is used and attempted forcible entry.

Larceny-Theft

Larceny-theft is the unlawful taking, carrying, leading, or riding away of property from the possession or constructive possession of another. It includes crimes such as shoplifting, pocket picking, purse-snatching, thefts from motor vehicles, thefts of motor vehicle parts and accessories, and bicycle thefts, etc., in which no use of force, violence, or fraud occurs. In the UCR Program, this crime category does not include embezzlement, "con" games, forgery, and worthless checks. Motor vehicle theft is also excluded from this category inasmuch as it is a separate Crime Index offense.

Motor Vehicle Theft

Defined as the theft or attempted theft of a motor vehicle, this offense category includes the stealing of automobiles, trucks, buses, motorcycles, motor scooters, snowmobiles, etc. The definition excludes the taking of a motor vehicle for temporary use by those persons having lawful access.

Nevada UCR Definitions / Explanations

Arson

Arson is defined by the Uniform Crime Reporting Program as any willful or malicious burning or attempt to burn, with or without intent to defraud, a dwelling house, public building, a motor vehicle or aircraft, personal property of another, etc. Only fires determined through investigation to have been willfully or maliciously set are classified as arsons. Fires of suspicious or unknown origins are excluded.

Population Estimates

State, county and incorporated city population estimates are prepared and reviewed prior to the end of each calendar year for certification by the governor by March 1. The Nevada Department of Taxation and Nevada State Demographer, Bureau of Business and Economic Research, College of Business Administration, University of Nevada, Reno, prepares these estimates.

Crime Rates

Crime rates involve the number of Index Crimes per unit of population, usually per 100,000 persons. Because Nevada has such a low population, a rate per 1,000 persons is used to reflect a more realistic volume. No attempt is made to incorporate transient populations or other factors that contribute to the ratio and types of crime in given areas. Any effort to make comparisons of crime rates between areas should be tempered by these population and environmental variables.

Crime rates are one of the most meaningful statistical elements. Computation of crime rates per 1,000 population is achieved by dividing the community's population by 1,000, then dividing the number of offenses in each class by that number. The answer is the number of offenses per 1,000 population and is the crime rate for that particular offense. In Table 2, the County Total Crime Rate is computed after subtracting the population figure for all non-reporting agencies for the current month.

The index offense "Aggravated Assault" is an item of special interest to users of Nevada's UCR report. In Tables 1 & 3, where Nevada and National crime rates are compared, "simple assaults" are subtracted from the total of all assaults following FBI UCR rules, thus allowing for direct comparison. However, total assaults (simple and aggravated) are also presented in the Nevada report. This is because the Nevada UCR staff believes this figure is an important indicator of risk for citizens and it presents a more balanced picture of this portion of the crime index to law enforcement personnel.

The Federal Bureau of Investigation, Uniform Crime Reporting Section, publishes national rates.

Clearance Rates

The percentage of crimes cleared is obtained by dividing the number of offenses cleared by the number of offenses known. This number is then multiplied by 100.

Nevada--Statewide Summary--UCR Index Crimes

AUGUST 2002

Offense	Crimes this Month	# Cleared this Month	% Cleared this Month	Crimes this YTD	# Cleared this YTD	% Cleared this YTD	August Crimes 2001	August Cleared 2001	% August Cleared 2001	NV Rate / 1,000 (Proj) *	2001 NV Rate / 1,000	2000 Ntl. Rate / 1,000
Murder	15	7	47	127	74	58	22	10	45	0.09	0.07	0.55
Rape	96	36	38	592	229	39	87	26	30	0.43	0.44	0.32
Robbery	464	84	18	3,202	670	21	410	71	17	2.39	2.31	1.45
Assault *	696	360	52	5,149	2,546	49	372	182	49	3.07	2.51	3.24
Burglary	1,703	338	20	12,463	2,996	24	1,524	398	26	8.57	8.91	7.28
Larceny	4,153	969	23	31,196	8,007	26	3,737	1,046	28	21.81	22.43	24.75
MV Theft	1,509	262	17	11,039	1,663	15	1,139	122	11	7.11	6.69	4.14
Arson	49	7	14	405	65	16	47	10	21	0.26	0.30	0.37
Total	8,685	2,063	24	64,173	16,250	25	7,338	1,865	25	43.72	43.65	42.10

* The projected Crime Rate for Assaults is computed after subtracting Simple Assaults from the total for all Assaults following FBI guidelines. Therefore, this rate may be compared directly to the National Rate. See Table 3 and the "Footnotes/Exceptions page for further information.

Nevada UCR - - Monthly Crime/ Clearance Summary - - All Crimes

Contributing Agency	Est. Pop	Murder		Rape		Robbery		Assault		Burglary		Larceny		MV Theft		Arson		Total Crimes	Crime Rate	Clearances	Clearance Rate
Carson County																		August 2002			
Carson SO	54,171	0	0	3	2	1	1	70	36	37	5	90	8	11	3	1	0	213	3.93	55	25.8%
County Total	54,171	0	0	3	2	1	1	70	36	37	5	90	8	11	3	1	0	213	3.93	55	25.8%
Churchill County																					
Churchill SO	16,766	0	0	1	1	1	0	20	17	7	5	15	3	2	1	0	0	46	2.74	27	58.7%
Fallon PD	8,162	0	0	0	0	2	0	20	11	5	0	40	7	5	1	0	0	72	8.82	19	26.4%
County Total	24,928	0	0	1	1	3	0	40	28	12	5	55	10	7	2	0	0	118	4.73	46	39.0%
Clark County																					
Boulder PD	14,760	0	0	0	0	0	0	5	1	13	2	12	3	2	2	0	0	32	2.17	8	25.0%
Clark Co. Schools PD*	267,697	0	0	0	0	1	0	9	5	5	1	27	0	0	0	5	0	47	0.18	6	12.8%
Henderson	196,780	0	0	16	5	16	3	176	133	155	21	230	56	77	6	10	2	680	3.46	226	33.2%
LV Metro PD	1,134,478	11	6	48	13	343	50	2,124	936	1,021	222	2,165	576	1,116	214	7	0	6,835	6.02	2,017	29.5%
LV Fire Dept*	506,111															12	1	12	0.02	1	8.3%
Mesquite	11,940	0	0	0	0	1	1	19	19	1	2	8	5	2	1	0	0	31	2.60	28	90.3%
North Las Vegas PD	127,897	3	1	2	2	41	11	260	149	128	6	270	59	133	7	6	2	843	6.59	237	28.1%
UNLV PD*	24,500	0	0	1	0	0	0	3	3	3	0	26	0	8	0	0	0	41	1.67	3	7.3%
County Total	1,485,855	14	7	67	20	402	65	2,596	1,246	1,326	254	2,738	699	1,338	230	40	5	8,521	5.73	2,526	29.6%
Douglas County																					
Douglas SO	43,450	0	0	0	0	0	0	44	32	12	1	51	17	3	2	0	0	110	2.53	52	47.3%
County Total	43,450	0	0	0	0	0	0	44	32	12	1	51	17	3	2	0	0	110	2.53	52	47.3%

*Population figure not included in county total
Table 2

Nevada UCR - - Monthly Crime/ Clearance Summary - - All Crimes

Contributing Agency	Est. Pop	Murder		Rape		Robbery		Assault		Burglary		Larceny		MV Theft		Arson		Total Crimes	Crime Rate	Clearances	Clearance Rate
August 2002																					
Elko County																					
Elko SO	22,795	0	0	0	0	0	0	4	3	13	2	6	0	1	2	0	0	24	1.05	7	29.2%
Carlin PD	2,166	0	0	0	0	0	0	0	0	1	0	4	0	1	0	0	0	6	2.77	0	0.0%
Elko PD	17,093	0	0	0	0	0	0	17	7	13	2	38	3	2	0	0	0	70	4.10	12	17.1%
Wendover PD	4,614	0	0	0	0	0	0	4	4	4	4	18	2	2	1	1	0	29	6.29	11	37.9%
County Total	46,668	0	0	0	0	0	0	25	14	31	8	66	5	6	3	1	0	129	2.76	30	23.3%
Esmeralda County																					
Esmeralda SO	1,038	0	0	0	0	0	0	1	1	0	0	0	0	0	0	0	0	1	0.96	1	100.0%
County Total	1,038	0	0	0	0	0	0	1	1	0	0	0	0	0	0	0	0	1	0.96	1	100.0%
Eureka County																					
Eureka SO	1,506	0	0	0	0	0	0	1	0	0	0	1	0	0	0	0	0	2	1.33	0	0.0%
County Total	1,506	0	0	0	0	0	0	1	0	0	0	1	0	0	0	0	0	2	1.33	0	0.0%
Humboldt County																					
Humboldt SO	9,163	0	0	0	0	0	0	6	3	6	0	6	2	2	1	0	0	20	2.18	6	30.0%
Winnemucca PD	7,001	0	0	0	0	0	0	8	7	7	1	17	5	4	2	0	0	36	5.14	15	41.7%
County Total	16,164	0	0	0	0	0	0	14	10	13	1	23	7	6	3	0	0	56	3.46	21	37.5%

*Population figure not included in county total
Table 2

Nevada UCR - - Monthly Crime/ Clearance Summary - - All Crimes

Contributing Agency	Est. Pop	Murder		Rape		Robbery		Assault		Burglary		Larceny		MV Theft		Arson		Total Crimes	Crime Rate	Clearances	Clearance Rate
August 2002																					
Lander County																					
Lander SO	5,761	0	0	0	0	1	0	12	8	13	2	8	0	2	0	0	0	36	6.25	10	27.8%
County Total	5,761	0	0	0	0	1	0	12	8	13	2	8	0	2	0	0	0	36	6.25	10	27.8%
Lincoln County																					
Lincoln SO	3,861	0	0	0	0	1	0	3	3	0	0	1	0	1	0	0	0	6	1.55	3	50.0%
County Total	3,861	0	0	0	0	1	0	3	3	0	0	1	0	1	0	0	0	6	1.55	3	50.0%
Lyon County																					
Lyon SO	34,440	0	0	1	0	0	0	47	44	19	3	28	3	6	0	0	0	101	2.93	50	49.5%
Yerington PD	2,889	0	0	0	0	0	0	1	2	2	6	7	5	0	0	0	0	10	3.46	13	130.0%
County Total	37,329	0	0	1	0	0	0	48	46	21	9	35	8	6	0	0	0	111	2.97	63	56.8%
Mineral County																					
Mineral SO	4,743	0	0	0	0	0	0	3	3	1	0	0	0	1	0	1	0	6	1.27	3	50.0%
County Total	4,743	0	0	0	0	0	0	3	3	1	0	0	0	1	0	1	0	6	1.27	3	50.0%
Nye County																					
Nye SO	34,384	0	0	0	0	2	1	55	55	41	20	63	31	3	2	1	1	165	4.80	110	66.7%
County Total	34,384	0	0	0	0	2	1	55	55	41	20	63	31	3	2	1	1	165	4.80	110	66.7%

*Population figure not included in county total
Table 2

Nevada UCR - - Monthly Crime/ Clearance Summary - - All Crimes

Contributing Agency	Est. Pop	Murder		Rape		Robbery		Assault		Burglary		Larceny		MV Theft		Arson		Total Crimes	Crime Rate	Clearances	Clearance Rate
August 2002																					
Pershing County																					
Pershing SO	4,729	0	0	0	0	0	0	3	3	0	0	7	1	0	0	0	0	10	2.11	4	40.0%
Lovelock PD	2,144	0	0	0	0	0	0	4	6	1	2	3	2	0	0	0	0	8	3.73	10	125.0%
County Total	6,873	0	0	0	0	0	0	7	9	1	2	10	3	0	0	0	0	18	2.62	14	77.8%
Storey County																					
Storey	3,714	0	0	0	0	0	0	2	1	0	0	7	0	0	0	0	0	9	2.42	1	11.1%
County Total	3,714	0	0	0	0	0	0	2	1	0	0	7	0	0	0	0	0	9	2.42	1	11.1%
Washoe County																					
Washoe SO	94,634	1	0	2	1	1	0	76	52	32	1	76	7	7	5	0	0	195	2.06	66	33.8%
Reno PD	186,883	0	0	11	4	45	12	405	196	114	14	661	121	83	6	5	1	1,324	7.08	354	26.7%
Sparks PD	71,753	0	0	10	7	8	5	148	141	43	16	226	52	32	6	0	0	467	6.51	227	48.6%
UNR PD*	15,000	0	0	0	0	0	0	1	1	3	0	17	0	1	0	0	0	22	1.47	1	4.5%
Washoe Co Schl PD*	57,592	0	0	0	0	0	0	7	3	0	0	5	0	0	0	0	0	12	0.21	3	25.0%
TMCC PD*	12,311	0	0	0	0	0	0	0	0	0	0	2	0	1	0	0	0	3	0.24	0	0.0%
County Total	353,270	1	0	23	12	54	17	637	393	192	31	987	180	124	17	5	1	2,023	5.73	651	32.2%
White Pine County																					
White Pine SO	8,783	0	0	1	1	0	0	10	9	3	0	18	1	1	0	0	0	33	3.76	11	33.3%
County Total	8,783	0	0	1	1	0	0	10	9	3	0	18	1	1	0	0	0	33	3.76	11	33.3%
Grand Total	2,132,498	15	7	96	36	464	84	3,568	1,894	1,703	338	4,153	969	1,509	262	49	7	11,557	5.42	3,597	31.1%

*Population figure not included in county total
Table 2

Nevada UCR - - Monthly Crimes/Clearances Summary - - Index Crimes

AUGUST 2002

	Est. Pop	Murder		Rape		Robbery		Assault		Burglary		Larceny		MV Theft		Arson		Total Crimes	Crime Rate	Total Clear	Clearance Rate
Statewide Totals																					
(Crimes/Clearances)	2,132,498	15	7	96	36	464	84	696	360	1703	338	4153	969	1509	262	49	7	8685	4.07	2063	23.75

Nevada (Projected 2002) vs National (2000) Index Crime Rates

(per 1,000 population)

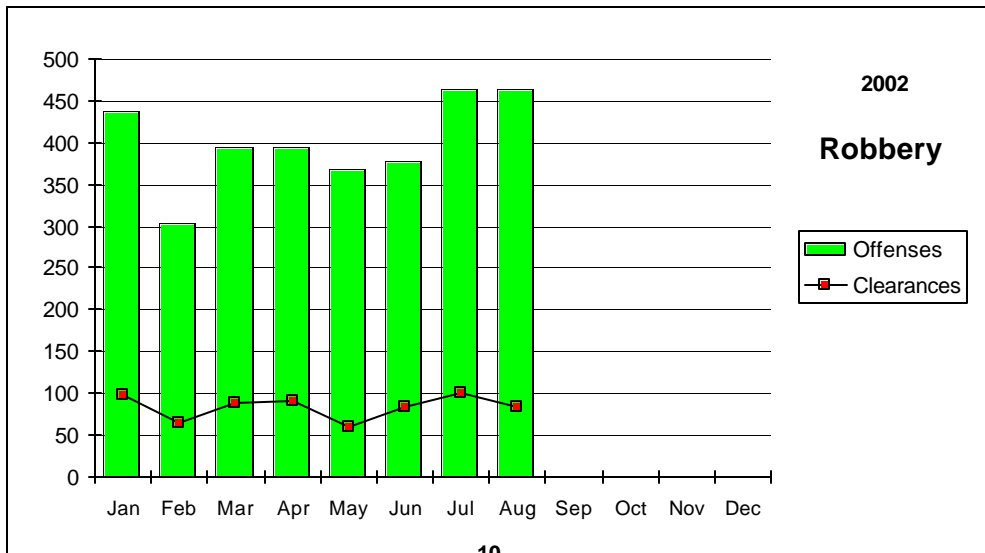
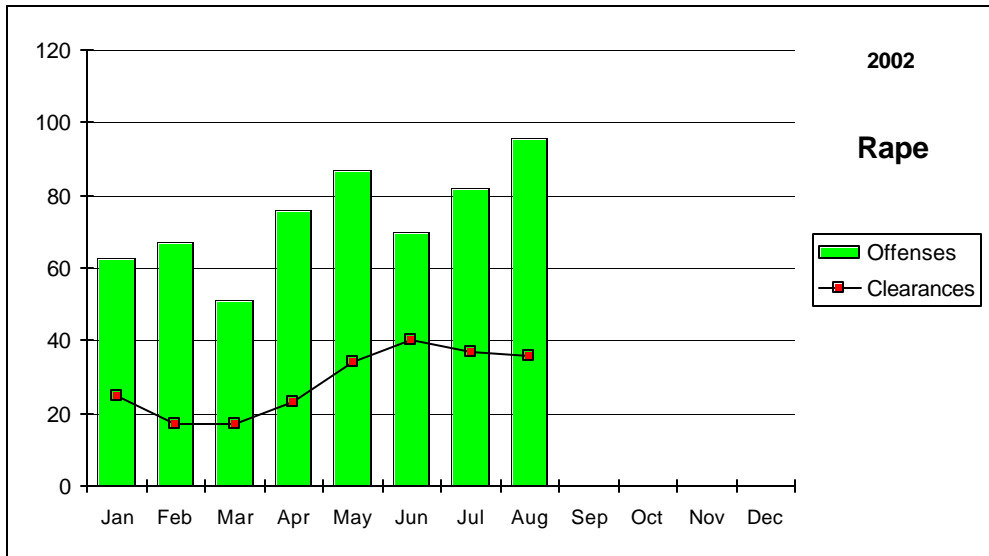
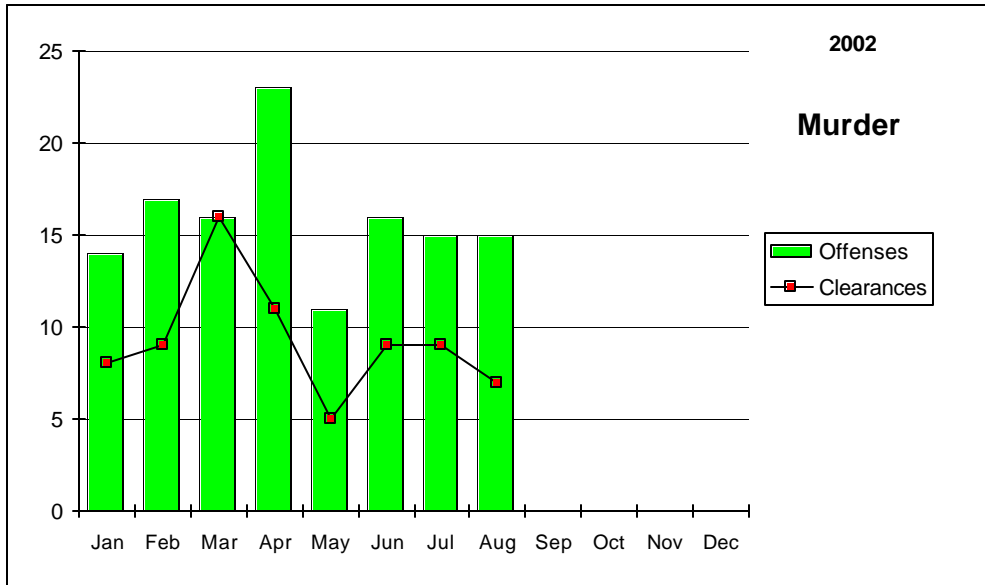
	Murder	Rape	Robbery	Assault	Burglary	Larceny	MV Theft	Arson	Crime Rate
Nevada	0.09	0.42	2.25	3.62	8.77	21.94	7.76	0.28	45.14
National	0.55	0.32	1.45	3.24	7.28	24.75	4.14	0.37	42.10

Nevada (Projected 2002) vs National (2000) Crime Clearance Rates

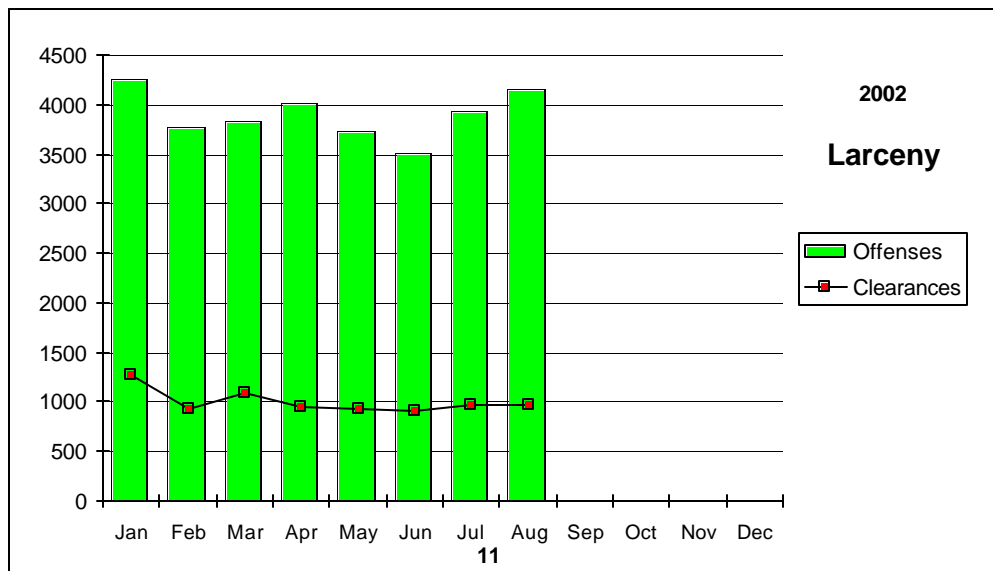
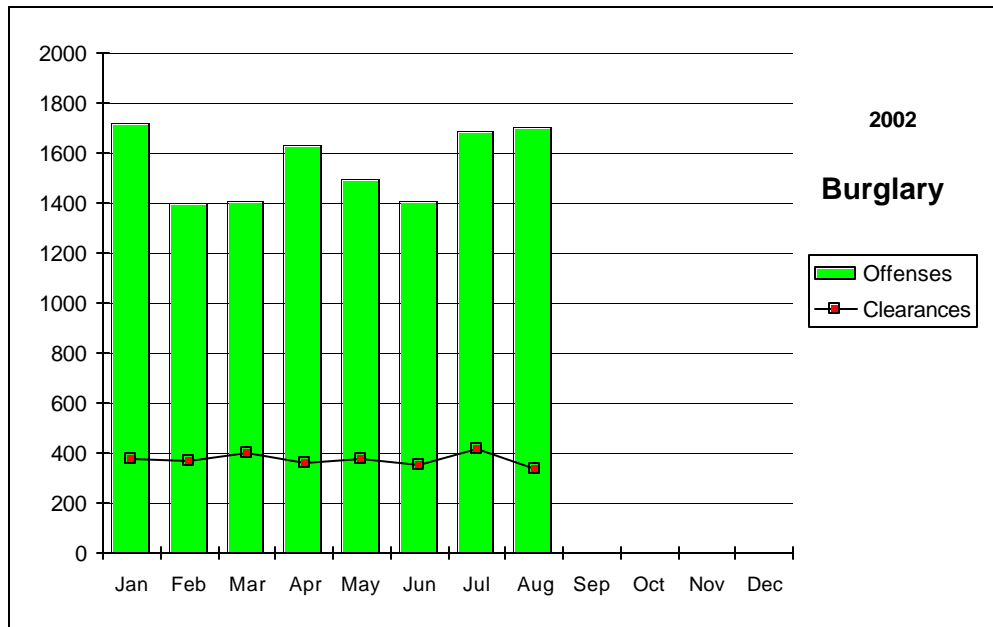
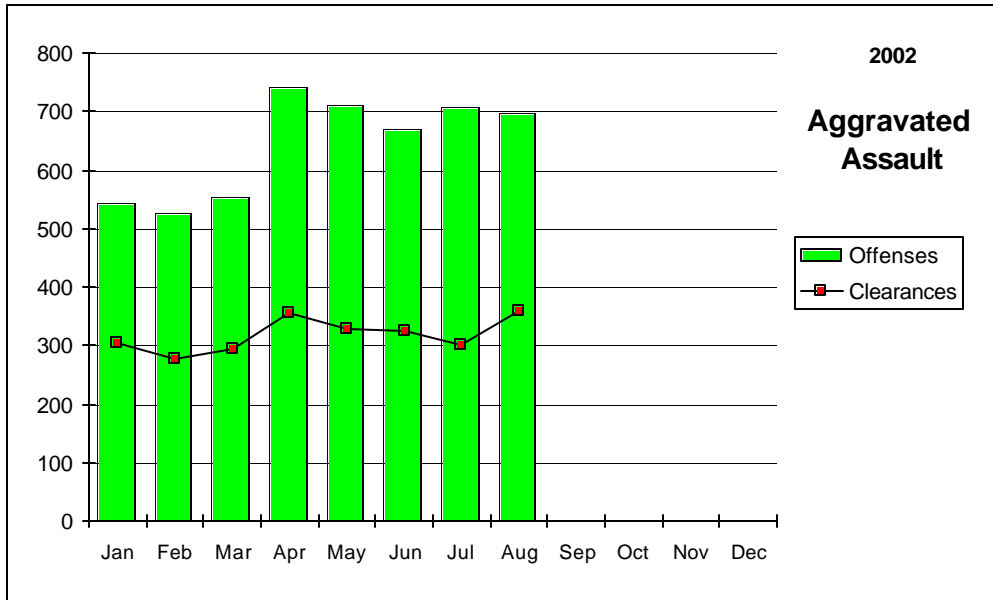
(by Percent)

	Murder	Rape	Robbery	Assault	Burglary	Larceny	MV Theft	Arson	Clear Rate
Nevada	58.27	38.68	20.92	49.45	24.04	25.67	15.06	16.05	25.57
National	63.10	46.90	25.70	56.90	13.40	18.20	14.10	16.00	20.50

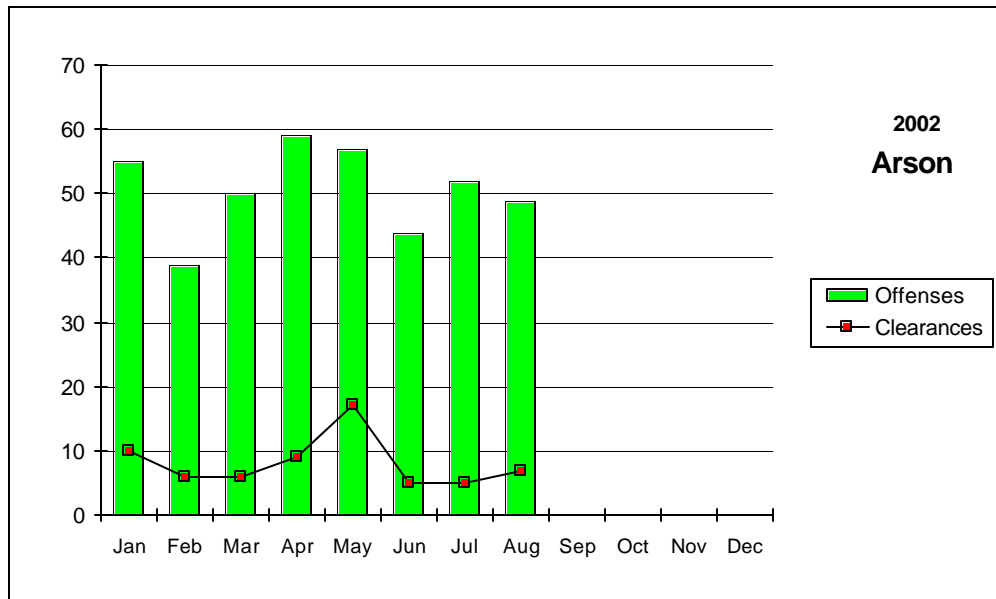
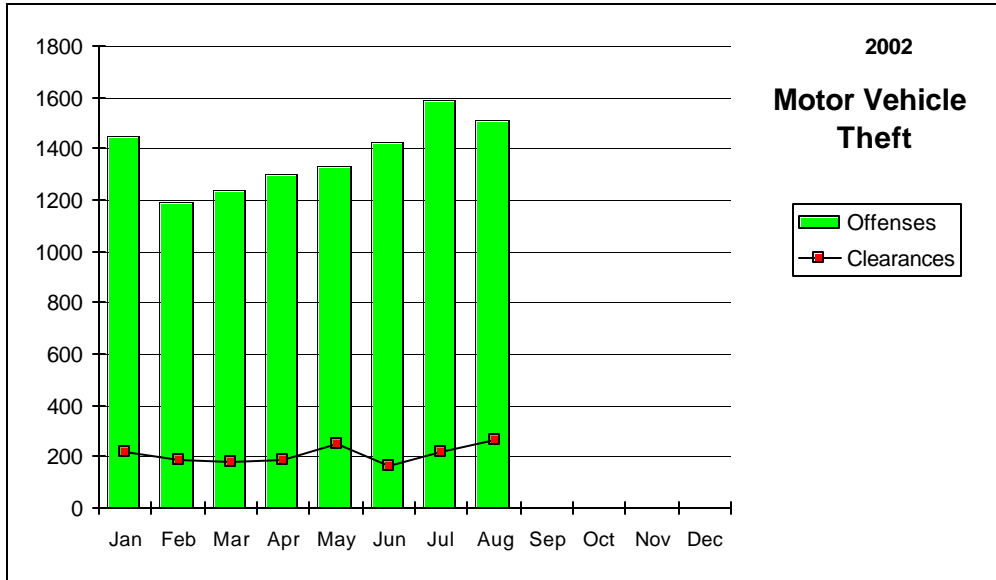
Nevada--Graphic Summary--UCR



Nevada--Graphic Summary--UCR



Nevada--Graphic Summary--UCR



Nevada--Murder--Incidence Level Variation--UCR

August 2002

Agency	August 2002 Offenses	August 2002 Cleared	YTD Offenses	2002 YTD Cleared	August 2001 Offenses	August 2001 Cleared	YTD Offenses	2001 YTD Cleared
Boulder	0	0	0	0	0	0	0	0
Carlin PD	0	0	0	0	0	0	0	0
Carson SO	0	0	0	0	0	0	0	0
Churchill SO	0	0	0	0	0	0	-1	0
Clark Co Schl PD	0	0	0	0	0	0	0	0
Douglas SO	0	0	1	1	0	0	0	0
Elko PD	0	0	0	0	0	0	0	0
Elko SO	0	0	1	1	0	0	1	0
Esmeralda SO	0	0	0	0	0	0	0	0
Eureka SO	0	0	0	0	0	0	0	0
Fallon PD	0	0	0	0	0	0	0	0
Henderson PD	0	0	2	3	1	1	7	4
Humboldt SO	0	0	0	0	0	0	0	0
Lander SO	0	0	0	0	0	0	0	0
Lincoln SO	0	0	0	0	0	0	0	0
Lovelock PD	0	0	0	0	0	0	0	0
LV Fire Dept	0	0	0	0	0	0	0	0
LV Metro	11	6	95	51	8	10	99	69
Lyon SO	0	0	0	0	1	1	1	1
Mesquite PD	0	0	0	0	0	0	0	0
Mineral SO	0	0	1	1	0	0	1	1
NLVPD	3	1	14	3	4	1	19	6
Nye SO	0	0	2	1	1	1	1	1
Pershing SO	0	0	0	0	0	0	1	1
Reno PD	0	0	7	7	2	2	6	5
Sparks PD	0	0	2	5	0	0	1	1
Storey SO	0	0	0	0	0	0	0	0
TMCC PD	0	0	0	0	0	0	0	0
UNLV PD	0	0	0	0	0	0	0	0
UNR PD	0	0	0	0	0	0	0	0
Washoe SO	1	0	1	0	0	0	2	1
Washoe Co Schl PD	0	0	0	0	0	0	0	0
Wendover PD	0	0	1	1	0	0	0	0
White Pine SO	0	0	0	0	0	0	0	0
Winnemucca PD	0	0	0	0	0	0	1	1
Yerington PD	0	0	0	0	0	0	0	0
TOTALS	15	7	127	74	17	16	139	91

Nevada--Rape--Incidence Level Variation--UCR

August 2002

Agency	August 2002 Offenses	August 2002 Cleared	YTD Offenses	2002 YTD Cleared	August 2001 Offenses	August 2001 Cleared	YTD Offenses	2001 YTD Cleared
Boulder	0	0	0	0	0	0	4	4
Carlin PD	0	0	0	0	0	0	0	0
Carson SO	3	2	29	6	2	0	26	3
Churchill SO	1	1	12	10	3	2	18	10
Clark Co Schl PD	0	0	0	0	0	0	0	0
Douglas SO	0	0	0	0	0	0	0	0
Elko PD	0	0	2	2	0	0	3	0
Elko SO	0	0	4	0	2	1	3	1
Esmeralda SO	0	0	0	0	0	0	0	0
Eureka SO	0	0	0	0	0	0	0	0
Fallon PD	0	0	1	1	0	0	0	0
Henderson PD	16	5	69	22	5	2	66	31
Humboldt SO	0	0	0	0	0	0	3	1
Lander SO	0	0	0	0	0	0	2	1
Lincoln SO	0	0	0	0	0	0	0	0
Lovelock PD	0	0	2	1	0	0	1	0
LV Fire Dept	0	0	0	0	0	0	0	0
LV Metro	48	13	295	112	34	12	355	128
Lyon SO	1	0	5	1	1	1	7	3
Mesquite PD	0	0	0	0	0	0	0	0
Mineral SO	0	0	1	1	0	0	3	3
NLVPD	2	2	30	16	6	3	33	19
Nye SO	0	0	0	0	0	0	0	0
Pershing SO	0	0	2	1	0	0	2	1
Reno PD	11	4	90	12	5	2	89	19
Sparks PD	10	7	37	37	6	3	34	22
Storey SO	0	0	1	1	0	0	0	0
TMCC PD	0	0	0	0	0	0	0	0
UNLV PD	1	0	2	0	0	0	1	1
UNR PD	0	0	0	0	0	0	0	0
Washoe SO	2	1	6	2	2	1	24	10
Washoe Co Schl PD	0	0	0	0	0	0	0	0
Wendover PD	0	0	2	2	0	0	1	1
White Pine SO	1	1	1	1	0	0	1	1
Winnemucca PD	0	0	1	1	2	0	4	2
Yerington PD	0	0	0	0	0	0	0	0
TOTALS	96	36	592	229	68	27	680	261

Nevada--Robbery--Incidence Level Variation--UCR

August 2002

Agency	August 2002 Offenses	August 2002 Cleared	YTD Offenses	2002 YTD Cleared	August 2001 Offenses	August 2001 Cleared	YTD Offenses	2001 YTD Cleared
Boulder	0	0	2	1	0	0	3	3
Carlin PD	0	0	0	0	1	1	1	1
Carson SO	1	1	19	10	4	1	23	10
Churchill SO	1	0	1	0	0	0	0	0
Clark Co Schl PD	1	0	12	5	0	0	11	3
Douglas SO	0	0	6	4	0	0	6	4
Elko PD	0	0	5	0	0	0	2	0
Elko SO	0	0	3	2	0	0	1	1
Esmeralda SO	0	0	0	0	0	0	0	0
Eureka SO	0	0	0	0	0	0	0	0
Fallon PD	2	0	4	0	0	0	2	1
Henderson PD	16	3	122	25	19	3	132	33
Humboldt SO	0	0	0	0	0	0	0	0
Lander SO	1	0	1	0	0	0	0	0
Lincoln SO	1	0	1	0	0	0	0	0
Lovelock PD	0	0	0	0	0	0	0	0
LV Fire Dept	0	0	0	0	0	0	0	0
LV Metro	343	50	2332	442	300	50	2263	357
Lyon SO	0	0	1	0	1	0	4	0
Mesquite PD	1	1	1	1	1	0	4	2
Mineral SO	0	0	1	1	0	0	0	0
NLVPD	41	11	306	57	21	4	257	48
Nye SO	2	1	13	7	0	0	3	3
Pershing SO	0	0	1	0	0	0	0	0
Reno PD	45	12	284	77	30	8	241	67
Sparks PD	8	5	70	33	4	5	53	23
Storey SO	0	0	0	0	0	0	0	0
TMCC PD	0	0	0	0	0	0	0	0
UNLV PD	0	0	4	1	0	0	4	2
UNR PD	0	0	0	0	0	0	0	0
Washoe SO	1	0	8	3	2	0	15	7
Washoe Co Schl PD	0	0	1	0	0	0	0	0
Wendover PD	0	0	1	0	0	0	1	1
White Pine SO	0	0	2	1	0	0	0	0
Winnemucca PD	0	0	1	0	0	0	0	0
Yerington PD	0	0	0	0	0	0	0	0
TOTALS	464	84	3202	670	383	72	3026	566

Nevada--Aggravated Assault--Incidence Level Variation--UCR

August 2002

Agency	August 2002 Offenses	August 2002 Cleared	2002 YTD Offenses	2002 YTD Cleared	Agusut 2001 Offenses	August 2001 Cleared	2001 YTD Offenses	2001 YTD Cleared
Boulder	2	1	43	31	3	3	40	30
Carlin PD	0	0	5	3	0	0	4	2
Carson SO	10	4	124	57	17	9	147	76
Churchill SO	5	5	23	22	2	2	18	12
Clark Co SchI PD	1	0	25	18	0	0	26	11
Douglas SO	7	3	28	17	6	3	31	22
Elko PD	0	0	14	5	1	1	20	10
Elko SO	0	0	14	7	2	1	20	4
Esmeralda SO	0	0	1	1	0	0	4	4
Eureka SO	1	0	5	2	7	3	11	7
Fallon PD	2	2	9	6	2	1	8	5
Henderson PD	11	7	96	87	20	13	144	70
Humboldt SO	6	3	38	22	0	0	29	23
Lander SO	6	8	28	16	1	0	25	4
Lincoln SO	0	0	1	0	2	1	6	5
Lovelock PD	1	1	3	2	4	4	8	7
LV Fire Dept	0	0	0	0	0	0	0	0
LV Metro	395	172	3029	1261	301	95	2002	765
Lyon SO	10	8	41	38	4	3	49	47
Mesquite PD	2	2	5	5	0	0	8	6
Mineral SO	0	0	3	3	0	0	6	6
NLVPD	88	48	553	302	55	27	542	266
Nye SO	13	13	77	64	7	7	58	56
Pershing SO	1	0	7	6	0	0	15	3
Reno PD	86	42	676	363	73	28	363	144
Sparks PD	25	26	136	122	25	17	129	95
Storey SO	2	1	18	8	7	5	26	20
TMCC PD	0	0	0	0	0	0	0	0
UNLV PD	0	0	3	2	0	0	4	4
UNR PD	0	0	2	2	0	0	3	0
Washoe SO	16	9	106	44	9	7	97	52
Washoe Co SchI PD	0	0	3	3	0	0	8	9
Wendover PD	0	0	8	6	1	1	5	5
White Pine SO	4	3	12	11	2	2	19	13
Winnemucca PD	1	1	6	6	1	1	7	7
Yerington PD	1	1	7	4	0	0	2	2
TOTALS	696	360	5149	2546	552	234	3884	1792

Nevada--All Assaults--Incidence Level Variation--UCR

August 2002

Agency	August 2002 Offenses	August 2002 Cleared	2002 YTD Offenses	2002 YTD Cleared	August 2001 Offenses	August 2001 Cleared	2001 YTD Offenses	2001 YTD Cleared
Boulder	5	1	126	35	6	6	99	62
Carlin PD	0	0	13	10	2	1	10	7
Carson SO	70	36	605	326	70	43	534	286
Churchill SO	20	17	143	116	18	12	156	120
Clark Co SchI PD	9	5	508	301	7	2	486	229
Douglas SO	44	32	337	268	41	34	328	281
Elko PD	17	7	168	90	33	23	219	149
Elko SO	4	3	66	41	8	4	44	12
Esmeralda SO	1	1	3	3	0	0	5	5
Eureka SO	1	0	10	4	8	4	14	10
Fallon PD	20	11	134	82	20	11	139	83
Henderson PD	176	133	1441	1138	167	124	1545	1072
Humboldt SO	6	3	39	23	0	0	37	26
Lander SO	12	8	43	22	1	0	54	28
Lincoln SO	3	3	16	11	4	1	15	8
Lovelock PD	4	6	42	40	5	4	33	23
LV Fire Dept	0	0	0	0	0	0	0	0
LV Metro	2124	936	15481	6667	1749	744	13387	6105
Lyon SO	47	44	305	299	30	28	265	256
Mesquite PD	19	19	170	121	7	8	83	80
Mineral SO	3	3	24	24	1	1	37	27
NLVPD	260	149	1895	1120	250	156	1921	1019
Nye SO	55	55	455	409	43	43	412	410
Pershing SO	3	3	20	13	3	3	34	12
Reno PD	405	196	2743	1411	321	142	2322	1084
Sparks PD	148	141	922	816	138	119	981	794
Storey SO	2	1	18	8	7	5	28	22
TMCC PD	0	0	2	0	0	0	1	1
UNLV PD	3	3	13	11	5	4	27	22
UNR PD	1	1	8	7	1	0	42	13
Washoe SO	76	52	583	399	90	46	579	402
Washoe Co SchI PD	7	3	179	169	5	5	156	154
Wendover PD	4	4	34	25	5	4	55	49
White Pine SO	10	9	49	41	9	8	58	41
Winnemucca PD	8	7	67	63	14	14	77	76
Yerington PD	1	2	9	5	0	0	2	2
TOTALS	3568	1894	26671	14118	3068	1599	24185	12970

Nevada--Burglary--Incidence Level Variation--UCR

August 2002

Agency	August 2002 Offenses	August 2002 Cleared	YTD Offenses	2002 YTD Cleared	August 2001 Offenses	August 2001 Cleared	YTD Offenses	2001 YTD Cleared
Boulder	13	2	51	8	14	0	110	35
Carlin PD	1	0	8	0	0	0	2	1
Carson SO	37	5	267	36	28	1	258	28
Churchill SO	7	5	44	11	3	0	31	9
Clark Co Schl PD	5	1	211	27	31	6	220	33
Douglas SO	12	1	139	31	14	7	128	38
Elko PD	13	2	98	24	15	5	78	19
Elko SO	13	2	84	18	12	0	76	7
Esmeralda SO	0	0	2	1	0	0	1	0
Eureka SO	0	0	0	0	1	1	5	1
Fallon PD	5	0	36	5	6	0	38	5
Henderson PD	155	21	995	150	119	21	920	165
Humboldt SO	6	0	32	5	0	0	17	2
Lander SO	13	2	26	4	3	2	13	3
Lincoln SO	0	0	7	1	0	0	6	0
Lovelock PD	1	2	14	13	5	2	25	12
LV Fire Dept	0	0	0	0	0	0	0	0
LV Metro	1021	222	7241	2117	1031	224	6481	1950
Lyon SO	19	3	105	18	15	3	122	27
Mesquite PD	1	2	11	7	2	2	18	10
Mineral SO	1	0	17	3	6	2	30	5
NLVPD	128	6	961	83	73	8	835	76
Nye SO	41	20	280	134	36	23	287	176
Pershing SO	0	0	9	0	1	0	10	1
Reno PD	114	14	879	96	110	10	1011	154
Sparks PD	43	16	453	129	58	22	369	116
Storey SO	0	0	8	1	0	0	10	0
TMCC PD	0	0	5	0	1	0	4	0
UNLV PD	3	0	48	3	9	2	51	3
UNR PD	3	0	17	0	9	0	36	2
Washoe SO	32	1	282	29	32	2	222	27
Washoe Co Schl PD	0	0	3	0	1	0	10	1
Wendover PD	4	4	21	8	4	2	14	4
White Pine SO	3	0	24	1	2	0	18	1
Winnemucca PD	7	1	51	12	2	0	22	5
Yerington PD	2	6	34	21	1	1	19	11
TOTALS	1703	338	12463	2996	1644	346	11497	2927

Nevada--Larceny--Incidence Level Variation--UCR

August 2002

Agency	August 2002 Offenses	August 2002 Cleared	YTD Offenses	2002 YTD Cleared	August 2001 Offense	August 2001 Cleared	YTD Offenses	2001 YTD Cleared
Boulder	12	3	94	11	7	5	92	35
Carlin PD	4	0	32	6	5	1	34	2
Carson SO	90	8	815	93	127	14	778	87
Churchill SO	15	3	113	26	13	0	89	19
Clark Co Schi PD	27	0	455	50	26	0	449	46
Douglas SO	51	17	433	136	42	11	390	126
Elko PD	38	3	293	52	49	6	325	42
Elko SO	6	0	67	10	18	1	64	5
Esmeralda SO	0	0	2	0	0	0	0	0
Eureka SO	1	0	9	2	2	1	8	2
Fallon PD	40	7	270	41	34	10	234	49
Henderson PD	230	56	1711	427	236	66	2020	437
Humboldt SO	6	2	45	12	2	0	33	10
Lander SO	8	0	43	3	10	2	46	7
Lincoln SO	1	0	14	1	2	0	14	0
Lovelock PD	3	2	21	12	0	0	23	14
LV Fire Dept	0	0	0	0	0	0	0	0
LV Metro	2165	576	15927	4742	1919	517	15100	4677
Lyon SO	28	3	246	51	48	5	367	54
Mesquite PD	8	5	94	51	9	3	46	24
Mineral SO	0	0	16	6	3	1	41	5
NLVPD	270	59	2034	460	217	53	1821	458
Nye SO	63	31	404	212	42	29	280	186
Pershing SO	7	1	42	8	5	1	36	9
Reno PD	661	121	5006	861	590	95	4687	986
Sparks PD	226	52	1703	502	207	52	1589	426
Storey SO	7	0	26	2	2	0	27	5
TMCC PD	2	0	11	0	1	0	15	0
UNLV PD	26	0	211	12	18	3	183	14
UNR PD	17	0	72	4	8	0	84	0
Washoe SO	76	7	620	109	102	7	572	164
Washoe Co Schi PD	5	0	68	29	1	0	35	15
Wendover PD	18	2	97	20	12	3	77	20
White Pine SO	18	1	81	9	8	3	89	26
Winnemucca PD	17	5	92	28	10	5	85	42
Yerington PD	7	5	29	19	3	3	18	12
TOTALS	4153	969	31196	8007	3778	897	29751	8004

Nevada--MV Theft--Incidence Level Variation--UCR

August 2002

Agency	August 2002 Offenses	August 2002 Cleared	YTD Offenses	2001 YTD Cleared	August 2001 Offenses	August 2001 Cleared	YTD Offenses	2001 YTD Cleared
Boulder	2	2	13	5	1	1	17	1
Carlin PD	1	0	5	4	1	0	3	1
Carson SO	11	3	87	12	10	0	64	4
Churchill SO	2	1	21	11	2	0	8	3
Clark Co Schl PD	0	0	32	2	0	0	24	2
Douglas SO	3	2	46	35	5	4	29	22
Elko PD	2	0	21	7	2	0	21	4
Elko SO	1	2	13	9	1	1	15	4
Esmeralda SO	0	0	0	0	0	0	0	0
Eureka SO	0	0	0	0	0	0	1	0
Fallon PD	5	1	16	6	2	0	14	4
Henderson PD	77	6	697	54	79	10	525	72
Humboldt SO	2	1	6	2	1	0	3	1
Lander SO	2	0	6	0	0	0	1	1
Lincoln SO	1	0	6	3	1	0	3	3
Lovelock PD	0	0	3	3	1	0	2	1
LV Fire Dept	0	0	0	0	0	0	0	0
LV Metro	1116	214	7845	1216	888	152	6617	741
Lyon SO	6	0	30	10	3	2	21	7
Mesquite PD	2	1	29	13	2	0	12	1
Mineral SO	1	0	1	0	0	0	2	2
NLVPD	133	7	1012	71	82	7	819	64
Nye SO	3	2	50	31	3	2	17	12
Pershing SO	0	0	2	0	0	1	5	5
Reno PD	83	6	710	65	77	9	549	52
Sparks PD	32	6	197	72	37	13	176	66
Storey SO	0	0	6	3	0	0	4	0
TMCC PD	1	0	1	0	0	0	0	0
UNLV PD	8	0	22	1	2	0	19	2
UNR PD	1	0	3	0	0	0	1	0
Washoe SO	7	5	121	18	19	9	111	39
Washoe Co Schl PD	0	0	0	0	0	0	1	0
Wendover PD	2	1	12	5	0	0	3	1
White Pine SO	1	0	4	0	0	0	3	2
Winnemucca PD	4	2	19	4	1	1	15	7
Yerington PD	0	0	3	1	2	0	2	0
TOTALS	1509	262	11039	1663	1222	212	9107	1124

Nevada--Arson--Incidence Level Variation--UCR

August 2002

Agency	August 2002 Offenses	August 2002 Cleared	YTD Offenses	2002 YTD Cleared	August 2001 Offenses	August 2001 Cleared	YTD Offenses	2001 YTD Cleared
Boulder	0	0	3	1	0	0	6	5
Carlin PD	0	0	0	0	0	0	0	0
Carson SO	1	0	9	2	4	1	10	4
Churchill SO	0	0	1	1	0	0	1	1
Clark Co Schl PD	5	0	42	16	4	0	49	13
Douglas SO	0	0	3	3	0	0	0	0
Elko PD	0	0	7	2	0	0	4	2
Elko SO	0	0	1	0	0	0	2	1
Esmeralda SO	0	0	0	0	0	0	0	0
Eureka SO	0	0	1	0	0	0	0	0
Fallon PD	0	0	0	0	0	0	0	0
Henderson PD	10	2	29	6	2	1	22	6
Humboldt SO	0	0	0	0	0	0	0	0
Lander SO	0	0	0	0	0	0	0	0
Lincoln SO	0	0	0	0	0	0	0	0
Lovelock PD	0	0	0	0	0	0	0	0
LV Fire Dept	12	1	107	9	16	2	81	16
LV Metro	7	0	110	0	6	0	96	0
Lyon SO	0	0	2	1	1	1	1	1
Mesquite PD	0	0	0	0	0	0	0	0
Mineral SO	1	0	2	1	0	0	2	0
NLVPD	6	2	40	5	0	0	27	2
Nye SO	1	1	7	4	1	0	6	3
Pershing SO	0	0	0	0	0	0	0	0
Reno PD	5	1	29	7	2	0	37	6
Sparks PD	0	0	0	0	0	0	0	0
Storey SO	0	0	0	0	0	0	0	0
TMCC PD	0	0	0	0	0	0	0	0
UNLV PD	0	0	2	0	0	0	1	0
UNR PD	0	0	1	1	1	1	3	1
Washoe SO	0	0	3	2	0	0	4	0
Washoe CO Scl PD	0	0	2	2	0	0	4	3
Wendover PD	1	0	2	0	0	0	5	2
White Pine SO	0	0	1	1	1	1	4	4
Winnemucca PD	0	0	1	1	3	1	4	1
Yerington PD	0	0	0	0	0	0	0	0
TOTALS	49	7	405	65	41	8	369	71

Nevada--Hate Crimes--UCR

AUGUST 2002

AGENCY	OFFENSE	LOCATION	BIAS	VICTIM TYPE / NUMBER	OFFENDER RACE / NUMBER
Reno PD	Intimidation	Residence/Home	Anti-Hispanic	Individual/2	White/1
North Las Vegas PD	Aggravated Assault	Other/Unknown	Anti-White	Individual/1	Black/2
Las Vegas Metro PD	Intimidation	Parking Lot/Garage	Anti-Black	Individual/1	Asian/Pacific Islander/4
Las Vegas Metro PD	Robbery	Grocery/Supermarket	Anti-Multi-Racial	Individual/1	White/1
Las Vegas Metro PD	Destruction/Damage/Vandalism	Residence/Home	Anti-Black	Individual/1	Unknown
Las Vegas Metro PD	Intimidation	Restaurant	Anti-Black	Individual/1	White/1
Las Vegas Metro PD	Aggravated Assault	Restaurant	Anti-Other Ethnicity	Individual/3	White/1
Las Vegas Metro PD	Aggravated Assault	Bar/Night Club	Anti-Black	Individual/1	White/1
Las Vegas Metro PD	Simple Assault	Service/Gas Station	Anti-Asian/Pacific Islander	Individual/1	White/1

Stolen/Recovered Property Report

August 2002

Property Type	Boulder PD	Carlin PD	Carson SO	Churchill SO	Clark Co SchI PD	Douglas SO	Elko PD	Elko SO	Esmeralda SO
Currency									
Stolen	\$3,600	\$180	\$2,868	\$1,600	\$12	\$5,839	\$8,716	\$1,607	\$0
Recovered	\$2,300	\$180	\$0	\$0	\$0	\$1,118	\$0	\$0	\$0
% Recovered	63.9%	100.0%	0.0%	0.0%	0.0%	19.1%	0.0%	0.0%	0.0%
Jewelry									
Stolen	\$10,085	\$0	\$17,362	\$4,600	\$0	\$10,645	\$750	\$1,200	\$0
Recovered	\$0	\$0	\$0	\$4,600	\$0	\$28	\$0	\$0	\$0
% Recovered	0.0%	0.0%	0.0%	100.0%	0.0%	0.3%	0.0%	0.0%	0.0%
Clothing									
Stolen	\$0	\$0	\$842	\$15	\$90	\$1,822	\$2,646	\$72	\$0
Recovered	\$0	\$0	\$0	\$0	\$0	\$96	\$0	\$72	\$0
% Recovered	0.0%	0.0%	0.0%	0.0%	0.0%	5.3%	0.0%	100.0%	0.0%
Motor Vehicle									
Stolen	\$33,350	\$9,000	\$69,560	\$38,000	\$0	\$56,000	\$28,500	\$17,000	\$0
Recovered	\$33,350	\$9,000	\$37,500	\$38,000	\$0	\$32,000	\$28,500	\$17,000	\$0
% Recovered	100.0%	100.0%	53.9%	100.0%	0.0%	57.1%	100.0%	100.0%	0.0%
Office Equipment									
Stolen	\$0	\$0	\$1,200	\$0	\$2,799	\$0	\$930	\$60	\$0
Recovered	\$0	\$0	\$0	\$0	\$0	\$0	\$0	\$60	\$0
% Recovered	0.0%	0.0%	0.0%	0.0%	0.0%	0.0%	0.0%	100.0%	0.0%
TV, VCR, Camera, Etc.									
Stolen	\$128	\$0	\$14,284	\$760	\$39,940	\$4,445	\$3,264	\$125	\$0
Recovered	\$0	\$0	\$0	\$0	\$250	\$125	\$630	\$0	\$0
% Recovered	0.0%	0.0%	0.0%	0.0%	0.6%	2.8%	19.3%	0.0%	0.0%
Firearm									
Stolen	\$0	\$0	\$0	\$0	\$0	\$1,500	\$1,040	\$400	\$0
Recovered	\$0	\$0	\$0	\$0	\$0	\$0	\$100	\$0	\$0
% Recovered	0.0%	0.0%	0.0%	0.0%	0.0%	0.0%	9.6%	0.0%	0.0%
Household Goods									
Stolen	\$0	\$0	\$280	\$450	\$0	\$0	\$1,641	\$1,010	\$0
Recovered	\$0	\$0	\$0	\$0	\$0	\$0	\$0	\$10	\$0
% Recovered	0.0%	0.0%	0.0%	0.0%	0.0%	0.0%	0.0%	1.0%	0.0%
Consumable Goods									
Stolen	\$0	\$33	\$194	\$11,682	\$0	\$1,106	\$154	\$10	\$0
Recovered	\$0	\$0	\$124	\$1	\$0	\$245	\$15	\$0	\$0
% Recovered	0.0%	0.0%	63.9%	0.0%	0.0%	22.2%	9.7%	0.0%	0.0%
Livestock									
Stolen	\$0	\$0	\$38	\$2,045	\$0	\$0	\$0	\$0	\$0
Recovered	\$0	\$0	\$0	\$2,045	\$0	\$0	\$0	\$0	\$0
% Recovered	0.0%	0.0%	0.0%	100.0%	0.0%	0.0%	0.0%	0.0%	0.0%
Misc.									
Stolen	\$158	\$180	\$55,167	\$3,850	\$14,403	\$17,745	\$1,937	\$3,740	\$0
Recovered	\$2,327	\$120	\$2,000	\$50	\$0	\$1,624	\$119	\$0	\$0
% Recovered	1470.2%	66.7%	3.6%	1.3%	0.0%	9.2%	6.1%	0.0%	0.0%
TOTALS									
Stolen	\$47,321	\$9,393	\$161,795	\$63,002	\$57,244	\$99,102	\$49,578	\$25,224	\$0
Recovered	\$37,977	\$9,300	\$39,624	\$44,696	\$250	\$35,236	\$29,364	\$17,142	\$0
% Recovered	80.3%	99.0%	24.5%	70.9%	0.4%	35.6%	59.2%	68.0%	0.0%

Stolen/Recovered Property Report

August 2002

Property Type	Eureka SO	Fallon PD	Henderson PD	Humboldt SO	Lander SO	Las Vegas Metro	Lincoln SO	Lovelock PD	Lyon SO
Currency									
Stolen	\$0	\$613	\$68,193	\$8,350	\$941	\$748,115	\$626	\$480	\$460
Recovered	\$0	\$601	\$97	\$0	\$140	\$739	\$25	\$0	\$0
% Recovered	0.0%	98.0%	0.1%	0.0%	14.9%	0.1%	4.0%	0.0%	0.0%
Jewelry									
Stolen	\$0	\$0	\$210,523	\$0	\$400	\$1,208,513	\$1	\$0	\$25,246
Recovered	\$0	\$0	\$3,190	\$0	\$0	\$975	\$0	\$0	\$0
% Recovered	0.0%	0.0%	1.5%	0.0%	0.0%	0.1%	0.0%	0.0%	0.0%
Clothing									
Stolen	\$0	\$0	\$6,616	\$369	\$380	\$252,700	\$0	\$0	\$240
Recovered	\$0	\$0	\$3,031	\$0	\$0	\$15,796	\$0	\$0	\$0
% Recovered	0.0%	0.0%	45.8%	0.0%	0.0%	6.3%	0.0%	0.0%	0.0%
Motor Vehicle									
Stolen	\$0	\$11,900	\$953,988	\$10,500	\$10,700	\$4,909,645	\$0	\$0	\$11,050
Recovered	\$0	\$10,000	\$794,865	\$10,000	\$4,700	\$1,503,900	\$0	\$0	\$0
% Recovered	0.0%	84.0%	83.3%	95.2%	43.9%	30.6%	0.0%	0.0%	0.0%
Office Equipment									
Stolen	\$0	\$0	\$28,647	\$0	\$0	\$415,952	\$0	\$0	\$0
Recovered	\$0	\$0	\$390	\$0	\$0	\$701	\$0	\$0	\$0
% Recovered	0.0%	0.0%	1.4%	0.0%	0.0%	0.2%	0.0%	0.0%	0.0%
TV, VCR, Camera, Etc.									
Stolen	\$0	\$0	\$74,982	\$560	\$911	\$632,654	\$82	\$0	\$3,185
Recovered	\$0	\$0	\$810	\$0	\$320	\$9,257	\$82	\$0	\$85
% Recovered	0.0%	0.0%	1.1%	0.0%	35.1%	1.5%	100.0%	0.0%	2.7%
Firearm									
Stolen	\$0	\$0	\$2,971	\$470	\$2,050	\$43,326	\$0	\$0	\$0
Recovered	\$0	\$0	\$1,600	\$0	\$0	\$0	\$0	\$0	\$0
% Recovered	0.0%	0.0%	53.9%	0.0%	0.0%	0.0%	0.0%	0.0%	0.0%
Household Goods									
Stolen	\$0	\$0	\$48,481	\$686	\$16,415	\$178,579	\$5	\$0	\$4,318
Recovered	\$0	\$0	\$2,076	\$0	\$1,025	\$2,879	\$5	\$0	\$0
% Recovered	0.0%	0.0%	4.3%	0.0%	6.2%	1.6%	100.0%	0.0%	0.0%
Consumable Goods									
Stolen	\$0	\$0	\$3,578	\$86	\$10	\$49,913	\$3	\$0	\$382
Recovered	\$0	\$0	\$92,180	\$0	\$0	\$7,045	\$0	\$0	\$19
% Recovered	0.0%	0.0%	2576.3%	0.0%	0.0%	14.1%	0.0%	0.0%	5.0%
Livestock									
Stolen	\$0	\$0	\$0	\$0	\$0	\$517	\$0	\$0	\$0
Recovered	\$0	\$0	\$0	\$0	\$0	\$0	\$0	\$0	\$0
% Recovered	0.0%	0.0%	0.0%	0.0%	0.0%	0.0%	0.0%	0.0%	0.0%
Misc.									
Stolen	\$83	\$9,908	\$171,827	\$5,443	\$24,721	\$1,948,703	\$21	\$200	\$52,904
Recovered	\$0	\$3,402	\$25,479	\$0	\$8,355	\$100,359	\$20	\$31	\$1,103
% Recovered	0.0%	34.3%	14.8%	0.0%	33.8%	5.2%	95.2%	15.5%	2.1%
TOTALS									
Stolen	\$83	\$22,421	\$1,569,806	\$26,464	\$56,528	\$10,388,617	\$738	\$680	\$97,785
Recovered	\$0	\$14,003	\$923,718	\$10,000	\$14,540	\$1,641,651	\$132	\$31	\$1,207
% Recovered	0.0%	62.5%	58.8%	37.8%	25.7%	15.8%	17.9%	4.6%	1.2%

Stolen/Recovered Property Report

August 2002

Property Type	Mesquite PD	Mineral SO	NLVPD	Nye SO	Pershing SO	Reno PD	Sparks PD	Storey SO	TMCC PD	UNLV PD
Currency										
Stolen	\$3,850	\$0	\$65,214	\$0	\$0	\$73,979	\$18,797	\$680	\$0	\$113
Recovered	\$0	\$0	\$4,654	\$0	\$0	\$5	\$36	\$0	\$0	\$0
% Recovered	0.0%	0.0%	7.1%	0.0%	0.0%	0.0%	0.2%	0.0%	0.0%	0.0%
Jewelry										
Stolen	\$0	\$0	\$64,849	\$5,400	\$0	\$101,646	\$36,565	\$0	\$0	\$6
Recovered	\$0	\$0	\$40	\$1,250	\$0	\$79	\$2,559	\$0	\$0	\$0
% Recovered	0.0%	0.0%	0.1%	23.1%	0.0%	0.1%	7.0%	0.0%	0.0%	0.0%
Clothing										
Stolen	\$0	\$0	\$6,329	\$500	\$0	\$20,296	\$2,183	\$0	\$0	\$265
Recovered	\$0	\$0	\$196	\$0	\$0	\$2,446	\$758	\$0	\$0	\$0
% Recovered	0.0%	0.0%	3.1%	0.0%	0.0%	12.1%	34.7%	0.0%	0.0%	0.0%
Motor Vehicle										
Stolen	\$5,000	\$0	\$950,490	\$16,050	\$0	\$497,465	\$254,000	\$0	\$7,000	\$45,500
Recovered	\$5,000	\$0	\$667,822	\$14,050	\$0	\$397,432	\$140,700	\$0	\$7,000	\$10,000
% Recovered	100.0%	0.0%	70.3%	87.5%	0.0%	79.9%	55.4%	0.0%	100.0%	22.0%
Office Equipment										
Stolen	\$0	\$0	\$32	\$450	\$0	\$57,721	\$23,145	\$0	\$0	\$0
Recovered	\$0	\$0	\$4	\$150	\$0	\$4,160	\$0	\$0	\$0	\$0
% Recovered	0.0%	0.0%	12.5%	33.3%	0.0%	7.2%	0.0%	0.0%	0.0%	0.0%
TV, VCR, Camera, Etc.										
Stolen	\$0	\$1,625	\$110,199	\$3,500	\$0	\$80,925	\$72,399	\$0	\$110	\$4,376
Recovered	\$0	\$0	\$2,217	\$2,500	\$0	\$722	\$4,205	\$0	\$0	\$0
% Recovered	0.0%	0.0%	2.0%	71.4%	0.0%	0.9%	5.8%	0.0%	0.0%	0.0%
Firearm										
Stolen	\$0	\$0	\$9,553	\$4,800	\$0	\$12,523	\$2,225	\$0	\$0	\$0
Recovered	\$0	\$0	\$0	\$1,900	\$0	\$500	\$0	\$0	\$0	\$0
% Recovered	0.0%	0.0%	0.0%	39.6%	0.0%	4.0%	0.0%	0.0%	0.0%	0.0%
Household Goods										
Stolen	\$0	\$0	\$1,486	\$2,050	\$0	\$8,951	\$28,303	\$0	\$0	\$0
Recovered	\$0	\$0	\$396	\$1,450	\$0	\$130	\$209	\$0	\$0	\$0
% Recovered	0.0%	0.0%	26.6%	70.7%	0.0%	1.5%	0.7%	0.0%	0.0%	0.0%
Consumable Goods										
Stolen	\$0	\$0	\$6,449	\$0	\$8	\$1,812	\$1,639	\$0	\$0	\$128
Recovered	\$0	\$0	\$4,964	\$0	\$0	\$690	\$479	\$0	\$0	\$0
% Recovered	0.0%	0.0%	77.0%	0.0%	0.0%	38.1%	29.2%	0.0%	0.0%	0.0%
Livestock										
Stolen	\$0	\$0	\$10,000	\$0	\$0	\$0	\$0	\$0	\$0	\$0
Recovered	\$0	\$0	\$0	\$0	\$0	\$0	\$0	\$0	\$0	\$0
% Recovered	0.0%	0.0%	0.0%	0.0%	0.0%	0.0%	0.0%	0.0%	0.0%	0.0%
Misc.										
Stolen	\$0	\$0	\$332,476	\$12,816	\$865	\$185,555	\$28,599	\$7,250	\$50	\$4,274
Recovered	\$150	\$0	\$3,176	\$6,524	\$0	\$14,081	\$10,028	\$800	\$0	\$0
% Recovered	0.0%	0.0%	1.0%	50.9%	0.0%	7.6%	35.1%	11.0%	0.0%	0.0%
TOTALS										
Stolen	\$8,850	\$1,625	\$1,557,077	\$45,566	\$873	\$1,040,873	\$467,855	\$7,930	\$7,160	\$54,662
Recovered	\$5,150	\$0	\$683,469	\$27,824	\$0	\$420,245	\$158,974	\$800	\$7,000	\$10,000
% Recovered	58.2%	0.0%	43.9%	61.1%	0.0%	40.4%	34.0%	10.1%	97.8%	18.3%

Stolen/Recovered Property Report

August 2002

Property Type	UNR PD	Washoe SO	Washoe Co Schl PD	Wendover PD	White Pine SO	Winnemucca PD	Yerington PD	Total By Property
Currency								
Stolen	\$50	\$7,249	\$0	\$1,880	\$1,832	\$1,356	\$0	\$1,027,199
Recovered	\$0	\$0	\$0	\$0	\$1,415	\$0	\$0	\$11,310
% Recovered	0.0%	0.0%	0.0%	0.0%	77.2%	0.0%	0.0%	1.1%
Jewelry								
Stolen	\$0	\$7,792	\$0	\$2,315	\$0	\$280	\$0	\$1,708,178
Recovered	\$0	\$0	\$0	\$0	\$0	\$280	\$0	\$13,001
% Recovered	0.0%	0.0%	0.0%	0.0%	0.0%	100.0%	0.0%	0.8%
Clothing								
Stolen	\$0	\$5,281	\$0	\$0	\$0	\$0	\$20	\$300,666
Recovered	\$0	\$0	\$0	\$0	\$0	\$0	\$0	\$22,395
% Recovered	0.0%	0.0%	0.0%	0.0%	0.0%	0.0%	0.0%	7.4%
Motor Vehicle								
Stolen	\$5,000	\$49,800	\$0	\$26,000	\$150	\$16,960	\$0	\$8,032,608
Recovered	\$5,000	\$16,400	\$0	\$26,000	\$0	\$16,160	\$0	\$3,824,379
% Recovered	100.0%	32.9%	0.0%	100.0%	0.0%	95.3%	0.0%	47.6%
Office Equipment								
Stolen	\$55	\$21,380	\$0	\$5,814	\$0	\$0	\$0	\$558,185
Recovered	\$0	\$0	\$0	\$100	\$0	\$0	\$0	\$5,565
% Recovered	0.0%	0.0%	0.0%	1.7%	0.0%	0.0%	0.0%	1.0%
TV, VCR, Camera, Etc.								
Stolen	\$1,040	\$22,767	\$900	\$1,200	\$2,553	\$1,500	\$0	\$1,078,414
Recovered	\$0	\$0	\$0	\$600	\$0	\$0	\$0	\$21,803
% Recovered	0.0%	0.0%	0.0%	50.0%	0.0%	0.0%	0.0%	2.0%
Firearm								
Stolen	\$0	\$2,895	\$0	\$0	\$300	\$0	\$0	\$84,053
Recovered	\$0	\$0	\$0	\$0	\$0	\$0	\$0	\$4,100
% Recovered	0.0%	0.0%	0.0%	0.0%	0.0%	0.0%	0.0%	4.9%
Household Goods								
Stolen	\$0	\$11,900	\$0	\$510	\$17	\$5,001	\$28	\$310,111
Recovered	\$0	\$0	\$0	\$260	\$17	\$0	\$0	\$8,457
% Recovered	0.0%	0.0%	0.0%	51.0%	100.0%	0.0%	0.0%	2.7%
Consumable Goods								
Stolen	\$0	\$1,481	\$0	\$31	\$107	\$189	\$60	\$79,054
Recovered	\$0	\$337	\$0	\$0	\$4	\$0	\$0	\$106,103
% Recovered	0.0%	22.8%	0.0%	0.0%	3.8%	0.0%	0.0%	134.2%
Livestock								
Stolen	\$0	\$0	\$0	\$0	\$0	\$0	\$0	\$12,600
Recovered	\$0	\$0	\$0	\$0	\$0	\$0	\$0	\$2,045
% Recovered	0.0%	0.0%	0.0%	0.0%	0.0%	0.0%	0.0%	16.2%
Misc.								
Stolen	\$6,125	\$111,514	\$3,406	\$14,037	\$1,910	\$4,963	\$128	\$3,024,958
Recovered	\$0	\$33	\$0	\$1,991	\$200	\$113	\$0	\$182,086
% Recovered	0.0%	0.0%	0.0%	0.0%	10.5%	2.3%	0.0%	6.0%
TOTALS								
Stolen	\$12,270	\$242,059	\$4,306	\$51,787	\$6,868	\$30,249	\$236	\$16,216,027
Recovered	\$5,000	\$16,770	\$0	\$28,951	\$1,635	\$16,553	\$0	\$4,201,242
% Recovered	40.7%	6.9%	0.0%	55.9%	23.8%	54.7%	0.0%	25.9%

Nevada--Assaults on Officers by Agency--UCR

August 2002

Agency	August 2002 Offenses	August 2002 Cleared	2002 YTD Offenses	2002 YTD Cleared	August 2001 Offenses	August 2001 Cleared	2001 YTD Offenses	2001 YTD Cleared
Boulder	0	0	0	0	0	0	2	2
Carlin PD	0	0	3	3	0	0	1	1
Carson SO	0	0	9	8	3	3	12	12
Churchill SO	1	1	2	2	0	0	1	1
ClrkSchIDst PD	0	0	0	0	0	0	0	0
Douglas SO	0	0	5	5	0	0	4	4
Elko PD	1	1	3	3	0	0	0	0
Elko SO	0	0	0	0	0	0	0	0
Esmeralda SO	0	0	0	0	0	0	0	0
Eureka SO	0	0	0	0	0	0	0	0
Fallon PD	0	0	0	0	0	0	3	3
Henderson PD	0	0	22	22	2	2	26	26
Highway Patrol	2	2	17	17	3	3	14	14
Humboldt SO	0	0	3	3	0	0	0	0
Lander SO	0	0	0	0	0	0	0	0
Lincoln SO	0	0	0	0	0	0	0	0
Lovelock PD	0	0	0	0	0	0	0	0
LV Fire Dept	0	0	0	0	0	0	0	0
LV Metro	28	28	182	182	18	18	170	170
Lyon SO	0	0	4	4	0	0	6	6
Mesquite PD	0	0	0	0	0	0	0	0
Mineral SO	0	0	3	3	0	0	0	0
NV Div Investigations	0	0	0	0	0	0	0	0
NLVPD	12	12	53	53	5	5	27	26
Nye SO	3	3	9	9	1	1	4	4
Pershing SO	0	0	0	0	0	0	0	0
Reno PD	1	1	1	1	0	0	9	9
Sparks PD	0	0	3	3	0	0	7	7
Storey SO	0	0	0	0	0	0	0	0
TMCC PD	0	0	0	0	0	0	0	0
UNLV PD	0	0	1	1	2	2	7	6
UNR PD	0	0	0	0	0	0	0	0
Washoe SO	0	0	13	11	0	0	7	7
Washoe Co SchI PD	0	0	3	3	0	0	1	1
Wendover PD	1	1	1	1	0	0	2	2
White Pine SO	0	0	0	0	0	0	1	1
Winnemucca PD	0	0	3	3	2	2	6	6
Yerington PD	0	0	0	0	0	0	0	0
TOTALS	49	49	340	337	36	36	310	308

Nevada -- Assaults by Agency/Weapon/Assignment -- UCR

AUGUST 2002

Table 16

Agency	Total Assaults	Number Cleared	Firearm	Knife / Cutting Device	Other Danger. Weapon	Hands, Fists, Feet, Etc.	2-Officer Vehicle	1-Officer Vehicle- Alone	1-Officer Vehicle- Assisted	Det./Spec. Assign. - Alone	Det./Spec. Assign. - Assisted	Other- Alone	Other- Assisted
Boulder City PD	0	0	0	0	0	0	0	0	0	0	0	0	0
Carlin PD	0	0	0	0	0	0	0	0	0	0	0	0	0
Carson City SO	0	0	0	0	0	0	0	0	0	0	0	0	0
Churchill Co SO	1	1	0	0	0	1	0	0	0	0	0	0	1
Clark School Dist PD	0	0	0	0	0	0	0	0	0	0	0	0	0
Douglas Co SO	0	0	0	0	0	0	0	0	0	0	0	0	0
Elko PD	1	1	0	0	0	1	0	0	1	0	0	0	0
Elko Co SO	0	0	0	0	0	0	0	0	0	0	0	0	0
Esmeralda Co SO	0	0	0	0	0	0	0	0	0	0	0	0	0
Eureka Co SO	0	0	0	0	0	0	0	0	0	0	0	0	0
Fallon PD	0	0	0	0	0	0	0	0	0	0	0	0	0
Henderson PD	0	0	0	0	0	0	0	0	0	0	0	0	0
NV Highway Patrol	2	2	0	0	2	0	0	1	1	0	0	0	0
Humboldt Co SO	0	0	0	0	0	0	0	0	0	0	0	0	0
Lander Co SO	0	0	0	0	0	0	0	0	0	0	0	0	0
Lincoln Co SO	0	0	0	0	0	0	0	0	0	0	0	0	0
Lovelock PD	0	0	0	0	0	0	0	0	0	0	0	0	0
Las Vegas Fire Dept	0	0	0	0	0	0	0	0	0	0	0	0	0
Las Vegas Metro PD	28	28	2	1	1	24	10	3	4	0	0	2	9
Lyon Co SO	0	0	0	0	0	0	0	0	0	0	0	0	0
Mesquite PD	0	0	0	0	0	0	0	0	0	0	0	0	0
Mineral Co SO	0	0	0	0	0	0	0	0	0	0	0	0	0
NV Div of Investigations	0	0	0	0	0	0	0	0	0	0	0	0	0
North Las Vegas PD	12	12	2	0	1	9	6	3	2	0	0	1	0
Nye Co SO	3	3	0	0	0	3	0	1	2	0	0	0	0
Pershing Co SO	0	0	0	0	0	0	0	0	0	0	0	0	0
Reno PD	1	1	0	0	1	0	0	0	0	0	1	0	0
Sparks PD	0	0	0	0	0	0	0	0	0	0	0	0	0
Storey Co SO	0	0	0	0	0	0	0	0	0	0	0	0	0
TMCC PD	0	0	0	0	0	0	0	0	0	0	0	0	0
UNLV PD	0	0	0	0	0	0	0	0	0	0	0	0	0
UNR PD	0	0	0	0	0	0	0	0	0	0	0	0	0
Washoe Co SO	0	0	0	0	0	0	0	0	0	0	0	0	0
Washoe Co School PD	0	0	0	0	0	0	0	0	0	0	0	0	0
West Wendover PD	1	1	0	0	0	1	0	0	1	0	0	0	0
White Pine Co SO	0	0	0	0	0	0	0	0	0	0	0	0	0
Winnemucca PD	0	0	0	0	0	0	0	0	0	0	0	0	0
Yerington PD	0	0	0	0	0	0	0	0	0	0	0	0	0
TOTALS	49	49	4	1	5	39	16	8	11	0	1	3	10

28

Nevada -- Officer Assaults by Activity/Weapon/Assignment -- UCR

AUGUST 2002

Table 17

29

ACTIVITY TYPE	Total Assaults	Number Cleared	Firearm	Knife / Cutting Device	Other Danger. Weapon	Hands, Fists, Feet, Etc.	2-Officer Vehicle	1-Officer Vehicle-Alone	1-Officer Vehicle-Assisted	Det./Spec. Assign.-Alone	Det./Spec. Assign.-Assisted	Other-Alone	Other-Assisted
DOMESTIC / OTHER DISTURBANCE	21	21	2	1	2	16	3	4	7	0	0	1	6
BURGLARY IN PROGRESS	0	0	0	0	0	0	0	0	0	0	0	0	0
ROBBERY IN PROGRESS	0	0	0	0	0	0	0	0	0	0	0	0	0
ATTEMPTING OTHER ARREST	0	0	0	0	0	0	0	0	0	0	0	0	0
CIVIL DISORDER	0	0	0	0	0	0	0	0	0	0	0	0	0
HANDLING PRISONER	10	10	0	0	1	9	2	1	2	0	0	1	4
INVEST. SUSP. PERSONS / CIRCUM.	1	1	0	0	1	0	0	1	0	0	0	0	0
AMBUSH-NO WARNING	0	0	0	0	0	0	0	0	0	0	0	0	0
MENTALLY DERANGED	2	2	0	0	0	2	2	0	0	0	0	0	0
TRAFFIC PURSUITS / STOPS	6	6	0	0	0	6	4	2	0	0	0	0	0
ALL OTHER	9	9	2	0	1	6	5	0	2	0	1	1	0
TOTALS	49	49	4	1	5	39	16	8	11	0	1	3	10

Nevada--Assaults with Injury/without Injury--UCR

AUGUST 2002

Agency	Total Assaults by weapon		Firearm		Cutting Instruments		Other Dangerous weapons		Hands, Fists, Feet, Etc.		
	With personal injury	Without personal injury	With personal injury	Without personal injury	With personal injury	Without personal injury	With personal injury	Without personal injury	With personal injury	Without personal injury	
Boulder City PD	0	0	0	0	0	0	0	0	0	0	
Carlin PD	0	0	0	0	0	0	0	0	0	0	
Carson City SO	0	0	0	0	0	0	0	0	0	0	
Churchill Co SO	1	0	1	0	0	0	0	0	0	1	
Clark Co Schl Dist PD	0	0	0	0	0	0	0	0	0	0	
Douglas Co SO	0	0	0	0	0	0	0	0	0	0	
Elko Co SO	0	0	0	0	0	0	0	0	0	0	
Elko PD	1	0	1	0	1	0	0	0	0	0	
Esmeralda Co SO	0	0	0	0	0	0	0	0	0	0	
Eureka Co SO	0	0	0	0	0	0	0	0	0	0	
Fallon PD	0	0	0	0	0	0	0	0	0	0	
Henderson PD	0	0	0	0	0	0	0	0	0	0	
NV Highway Patrol	2	2	0	0	0	0	0	0	2	0	
Humboldt Co SO	0	0	0	0	0	0	0	0	0	0	
Lander Co SO	0	0	0	0	0	0	0	0	0	0	
Las Vegas Metro PD	28	2	26	1	1	0	1	0	1	23	
Lincoln Co SO	0	0	0	0	0	0	0	0	0	0	
Lovelock PD	0	0	0	0	0	0	0	0	0	0	
Lyon Co SO	0	0	0	0	0	0	0	0	0	0	
Mesquite PD	0	0	0	0	0	0	0	0	0	0	
Mineral Co SO	0	0	0	0	0	0	0	0	0	0	
NV Div Investigations	0	0	0	0	0	0	0	0	0	0	
North Las Vegas PD	12	5	7	1	1	0	0	1	0	3	
Nye Co SO	3	0	3	0	0	0	0	0	0	3	
Pershing Co SO	0	0	0	0	0	0	0	0	0	0	
Reno PD	1	0	1	0	0	0	0	1	0	0	
Sparks PD	0	0	0	0	0	0	0	0	0	0	
Storey Co SO	0	0	0	0	0	0	0	0	0	0	
TMCC PD	0	0	0	0	0	0	0	0	0	0	
UNLV PD	0	0	0	0	0	0	0	0	0	0	
UNR PD	0	0	0	0	0	0	0	0	0	0	
Washoe Co SO	0	0	0	0	0	0	0	0	0	0	
Washoe Co School Dist.	0	0	0	0	0	0	0	0	0	0	
West Wendover PD	1	0	1	0	0	0	0	0	0	1	
White Pine Co SO	0	0	0	0	0	0	0	0	0	0	
Winnemucca PD	0	0	0	0	0	0	0	0	0	0	
Yerington PD	0	0	0	0	0	0	0	0	0	0	
Totals	49	9	40	2	3	0	1	1	2	6	34

Nevada--Time of Assaults on Officers--UCR

August 2002

Agency	2:00 AM	4:00 AM	6:00 AM	8:00 AM	10:00 AM	12:00 AM	12:01- 2:00 PM	2:00- 4:00 PM	4:00- 6:00 PM	6:00- 8:00 PM	10:00 PM	10:00- 12:00 PM
Boulder City PD	0	0	0	0	0	0	0	0	0	0	0	0
Carlin PD	0	0	0	0	0	0	0	0	0	0	0	0
Carson City SO	0	0	0	0	0	0	0	0	0	0	0	0
Churchill Co SO	0	1	0	0	0	0	0	0	0	0	0	0
Clark Co Schl Dist PD	0	0	0	0	0	0	0	0	0	0	0	0
Douglas Co SO	0	0	0	0	0	0	0	0	0	0	0	0
Elko Co SO	0	0	0	0	0	0	0	0	0	0	0	0
Elko PD	0	0	0	0	0	0	0	0	0	0	0	1
Esmeralda Co SO	0	0	0	0	0	0	0	0	0	0	0	0
Eureka Co SO	0	0	0	0	0	0	0	0	0	0	0	0
Fallon PD	0	0	0	0	0	0	0	0	0	0	0	0
Henderson PD	0	0	0	0	0	0	0	0	0	0	0	0
Highway Patrol	0	0	0	0	0	0	2	0	0	0	0	0
Humbolt Co SO	0	0	0	0	0	0	0	0	0	0	0	0
Lander Co SO	0	0	0	0	0	0	0	0	0	0	0	0
Las Vegas Metro PD	4	3	1	3	8	1	0	3	1	0	2	2
Lincoln Co SO	0	0	0	0	0	0	0	0	0	0	0	0
Lovelock PD	0	0	0	0	0	0	0	0	0	0	0	0
Lyon Co SO	0	0	0	0	0	0	0	0	0	0	0	0
Mesquite PD	0	0	0	0	0	0	0	0	0	0	0	0
Mineral Co SO	0	0	0	0	0	0	0	0	0	0	0	0
NV Div Investigations	0	0	0	0	0	0	0	0	0	0	0	0
North LV PD	2	0	1	0	0	0	0	0	2	4	0	3
Nye Co SO	1	0	0	0	0	0	0	0	0	2	0	0
Pershing Co SO	0	0	0	0	0	0	0	0	0	0	0	0
Reno PD	0	0	0	0	0	0	0	0	0	1	0	0
Sparks PD	0	0	0	0	0	0	0	0	0	0	0	0
Storey Co SO	0	0	0	0	0	0	0	0	0	0	0	0
TMCC PD	0	0	0	0	0	0	0	0	0	0	0	0
UNLV PD	0	0	0	0	0	0	0	0	0	0	0	0
UNR PD	0	0	0	0	0	0	0	0	0	0	0	0
Washoe Co SO	0	0	0	0	0	0	0	0	0	0	0	0
Washoe Co Schl PD	0	0	0	0	0	0	0	0	0	0	0	0
West Wendover PD	0	0	0	0	1	0	0	0	0	0	0	0
White Pine Co SO	0	0	0	0	0	0	0	0	0	0	0	0
Winnemucca PD	0	0	0	0	0	0	0	0	0	0	0	0
Yerington PD	0	0	0	0	0	0	0	0	0	0	0	0
Totals	7	4	2	3	9	1	2	3	3	7	2	6

Nevada -- Highway Patrol Drug Arrests -- UCR

AUGUST 2002

		Age																			Total											
		10-12		13-16		17-18		19-20		21-22		23-24		25-29		30-34		35-39		40-44		45-49		50-54		55-59		60-64		>64		Unknown
Carson City	M															3																3
	F																															
Churchill	M																															0
	F																															0
Clark	M				1				1			1	1	2	4	3	2	2												3	20	
	F														2			2													4	
Douglas	M																														0	
	F																														0	
Elko	M																														0	
	F																1														1	
Esmeralda	M																														0	
	F																														0	
Eureka	M																														0	
	F																														0	
Humboldt	M																														0	
	F																														0	
Lander	M						1																								1	
	F																	2													2	
Lincoln	M																														0	
	F																														0	
Lyon	M																														0	
	F																														0	
Mineral	M																														0	
	F																														0	
Nye	M																														0	
	F																														0	
Pershing	M																														0	
	F																														0	
Storey	M																	1													1	
	F																														0	
Washoe	M							2		5	1		3	7	3	1		2	1									1		26		
	F															1														1		
White Pine	M															1															1	
	F																														0	
Unknown County*	M									1				5	1	1	2						1								11	
	F																														0	
Total		0	0	0	1	0	1	0	3	0	6	2	1	5	21	7	9	7	2	1	1	1	0	0	0	0	4	0	71			

Nevada -- Division Of Investigations

Arrests for Narcotics Violations

AUGUST 2002

		10- 13-										25- 30- 35- 40- 45- 50- 55- 60-										Total	W	B	A	I																						
		<10	12	14	15	16	17	18	19	20	21	22	23	24	29	34	39	44	49	54	59						64	>64																				
SALES/MANUFACTURING VIOLATIONS																																																
Opium or cocaine and their derivatives (morphine, heroin, codeine)	M															1								1	1																							
	F																								0																							
Marijuana	M																								0																							
	F																								0																							
Synthetic narcotics- Manufactured narcotics that can cause true drug addiction (demerol, meth)	M															1	1		1						3	3																						
	F																		1						1	1																						
Other dangerous, non-narcotic, drugs (barbituates, benzderine)	M																								0																							
	F																								0																							
Sub-Total	M	0	0	0	0	0	0	0	0	0	0	0	0	0	0	1	2	0	1	0	0	0	0	4	4	0	0	0																				
	F	0	0	0	0	0	0	0	0	0	0	0	0	0	0	0	0	0	1	0	0	0	0	1	1	0	0	0																				
POSSESSION VIOLATIONS																																																
Opium or cocaine and their derivatives (morphine, heroin, codeine)	M																								0																							
	F																								0																							
Marijuana	M								1	1					1	1								4	4																							
	F																1							1			1																					
Synthetic narcotics- Manufactured narcotics that can cause true drug addiction (demerol, meth)	M									1					1	1	1	1	1					6	6																							
	F										1				1			1						3	3																							
Other dangerous, non-narcotic, drugs (barbituates, benzderine)	M							1					1		1									3	3																							
	F																1							1			1																					
Sub-Total	M	0	0	0	0	0	0	1	0	1	1	1	1	0	3	1	2	1	1	0	0	0	0	13	13	0	0	0																				
	F	0	0	0	0	0	0	0	0	0	0	1	0	0	1	0	2	1	0	0	0	0	0	5	3	2	0	0																				
Total		0	0	0	0	0	0	1	0	1	1	2	1	0	4	2	6	2	3	0	0	0	0	23	21	2	0	0																				

Nevada UCR
*Footnotes / Exceptions

August 2002

Table 1

--Nevada figures are annualized projections.

--"Assault" does not include simple assaults to allow direct comparison between the Nevada rate and the National rate for this Index offense. See Table 8 for a count of all assaults.

Table 2

--The LV Fire Department reports "Arson" offenses for the City of Las Vegas. The population figure for this agency represents jurisdiction and is not added to the county total. Similarly, the School District Police Departments in Clark and Washoe Counties are not added to county population estimates as they represent persons served (student enrollment plus staff.)

--Assault data in this table includes ALL assaults (aggravated and simple) reported for the current month.

--County crime rates are calculated following subtraction of populations of jurisdictions failing to report.

Table 3

-- In the "Nevada vs National Index Crime and Clearance Rates" sections, the "Assaults" numbers do not include simple assaults following FBI guidelines. Therefore, they may be compared directly to National rates.

-- National crime rate figures are the latest available for comparative use (2000). Nevada figures are annualized projections.

Table 13

--At various times, property values recovered will exceed values stolen for the current reporting period.

General Notes:

■ The following agency(ies) was unable to submit reports for this month: All agencies reported.

-- Any late reports not submitted in time for this publication will be incorporated in to the year-to-date totals in subsequent reports.