



UNIFORM CRIME REPORTING PROGRAM
UCR STATISTICAL DATA VERIFICATION FORM

As an agency administrator or designee for the _____, I have
(Name of Agency)
reviewed the UCR monthly statistics for **December 2010** which includes all UCR data submitted year to date. Based upon my or my designee's review and validation of same, I find that:

All data contained in the report for my agency is accurate and complete and may be released and made part of UCR publications for future distribution to the public and other interested UCR data subscribers.

Data contained in the report is inaccurate or incomplete and may not be published or released at this time. (If this choice is selected, please provide the reason in the space provided below.)

Reason: _____

The corrected data will be supplied to the UCR Program by: _____.
(Date)

This document must be signed and mailed to the Uniform Crime Reporting Program, 333 W. Nye Lane Ste 100, Carson City, Nevada 89706 or faxed to (775) 684-6268 by **April 28, 2011**.

Signature of Agency Administrator (or designee)

Name/Title of Agency Administrator (print or type)

Agency's Name/Location

Date



Monthly Report



**December
2010**



Disclaimer: The following information is preliminary and cannot be certified until it is published in the annual report, *Crime in Nevada*, which will be available after July 1, 2011.



**Jearld Hafen, Director
Department of Public Safety**

**Pat Conmay, Division Chief
Records and Identification Bureau**

**Nicole Davis, Administrative Assistant IV
Sherri Sharp, Administrative Assistant II**

**Prepared by:
Records and Identification Bureau
Uniform Crime Reporting
333 W. Nye Lane Ste 100
Carson City, Nevada 89706
(775) 684-6262**



Nevada UCR Definitions / Explanations

Uniform Crime Reporting Program

The UCR program is a nationwide, cooperative, statistical effort by over 17,000 cities, county and state law enforcement agencies that voluntarily report data on crimes brought to their attention. Law enforcement agencies active in the national program represent 95% of the total population of the United States. While the program's primary objective is to generate a reliable set of crime statistics for use in law enforcement administration, operation and management, its data has over the years become one of the country's leading social indicators.

In Nevada, 40 agencies are currently reporting UCR data to the statewide program representing nearly 99% of its population. Rather than submitting directly to the FBI, local agencies must submit crime data to the state UCR Repository, which compiles, analyzes and submits copies of the reports to the FBI. The Nevada UCR Program prides itself on its responsiveness to local contributing agencies that previously received limited feedback for their efforts. The Nevada program is also responsible for producing and distributing periodic reports of the information contained in its database. As its database has grown, the program's utility has become even more apparent.

Eight offenses serve as an index for gauging fluctuations in overall volumes and rates of crime. Known collectively as the " Crime Index, " these offenses include *the violent crimes of murder, rape, robbery and assault and the property crimes of burglary, larceny, motor vehicle theft and arson*. These offenses were selected as a grouped measuring device because they represent the most common crime problems. They are all serious crimes; either by their very nature or due to the volume and frequency with which they occur.

Index Crimes Definitions

Murder and Non-negligent Manslaughter

Murder and non negligent manslaughter, as defined in the Uniform Crime Reporting Program, is the willful (non-negligent) killing of a human being by another.

The classification of this offense, as for all other Crime Index offenses, is based solely on police investigation as opposed to the determination of a court, medical examiner, coroner, jury or other judicial entity. Not included in the count for this offense classification are deaths caused by negligence, suicide or accident, justifiable homicides and attempts to murder or assaults to murder. These are scored as aggravated assaults.

Nevada UCR Definitions / Explanations

Forcible Rape

Forcible rape, as defined in the program, is the carnal knowledge of a female forcibly and against her will. Assaults or attempts to commit rape by force or threat of force are also included; however, statutory rape (without force) and other sex offenses are excluded.

Robbery

Robbery is the taking or attempting to take anything of value from the care, custody or control of a person or persons by force or threat of force or violence and/or by putting the victim in fear.

Aggravated Assault

Aggravated assault is an unlawful attack by one person upon another for the purpose of inflicting severe or aggravated bodily injury. This type of assault is usually accompanied by the use of a weapon or by means likely to produce death or great bodily harm. Attempts are included since it is not necessary that an injury result when a gun, knife or other weapon is used which could and probably would result in serious personal injury if the crime were successfully completed

Burglary

The Uniform Crime Reporting Program defines burglary as the unlawful entry of a structure to commit a felony or theft. The use of force to gain entry is not required to classify an offense as burglary. Burglary in this program is categorized into three sub classifications: forcible entry, unlawful entry where no force is used and attempted forcible entry.

Larceny-Theft

Larceny-theft is the unlawful taking, carrying, leading, or riding away of property from the possession or constructive possession of another. It includes crimes such as shoplifting, pocket picking, purse-snatching, thefts from motor vehicles, thefts of motor vehicle parts and accessories, and bicycle thefts, etc., in which no use of force, violence, or fraud occurs. In the UCR Program, this crime category does not include embezzlement, "con" games, forgery, and worthless checks. Motor vehicle theft is also excluded from this category inasmuch as it is a separate Crime Index offense.

Motor Vehicle Theft

Defined as the theft or attempted theft of a motor vehicle, this offense category includes the stealing of automobiles, trucks, buses, motorcycles, motor scooters, snowmobiles, etc. The definition excludes the taking of a motor vehicle for temporary use by those persons having lawful access.

Nevada UCR Definitions / Explanations

Arson

Arson is defined by the Uniform Crime Reporting Program as any willful or malicious burning or attempt to burn, with or without intent to defraud, a dwelling house, public building, a motor vehicle or aircraft, personal property of another, etc. Only fires determined through investigation to have been willfully or maliciously set are classified as arsons. Fires of suspicious or unknown origins are excluded.

Population Estimates

State, county and incorporated city population estimates are prepared and reviewed prior to the end of each calendar year for certification by the governor by March 1. The Nevada Department of Taxation and Nevada State Demographer, Bureau of Business and Economic Research, College of Business Administration, University of Nevada, Reno, prepares these estimates.

Crime Rates

Crime rates involve the number of Index Crimes per unit of population, usually per 100,000 persons. Because Nevada has such a low population, a rate per 1,000 persons is used to reflect a more realistic volume. No attempt is made to incorporate transient populations or other factors that contribute to the ratio and types of crime in given areas. Any effort to make comparisons of crime rates between areas should be tempered by these population and environmental variables.

Crime rates are one of the most meaningful statistical elements. Computation of crime rates per 1,000 population is achieved by dividing the community's population by 1,000, then dividing the number of offenses in each class by that number. The answer is the number of offenses per 1,000 population and is the crime rate for that particular offense. In Table 2, the County Total Crime Rate is computed after subtracting the population figure for all non-reporting agencies for the current month.

The index offense "Aggravated Assault" is an item of special interest to users of Nevada's UCR report. In Tables 1 & 3, where Nevada and National crime rates are compared, "simple assaults" are subtracted from the total of all assaults following FBI UCR rules, thus allowing for direct comparison. However, total assaults (simple and aggravated) are also presented in the Nevada report. This is because the Nevada UCR staff believes this figure is an important indicator of risk for citizens and it presents a more balanced picture of this portion of the crime index to law enforcement personnel.

The Federal Bureau of Investigation, Uniform Crime Reporting Section, publishes national rates.

Clearance Rates

The percentage of crimes cleared is obtained by dividing the number of offenses cleared by the number of offenses known. This number is then multiplied by 100.

**Nevada--Statewide Summary--UCR
Index Crimes**

December 2010

Offense	Crimes this Month	# Cleared this Month	% Cleared this Month	Crimes this YTD	# Cleared this YTD	% Cleared this YTD	December Crimes 2009	December Cleared 2009	% December Cleared 2009	2009 NV Rate / 1,000 (Proj) *	2008 NV Rate / 1,000	2008 Natl. Rate / 1,000
Murder	11	10	91	161	132	82	14	14	100	0.06	0.09	0.05
Rape	57	14	25	951	228	24	67	12	18	0.35	0.41	0.29
Robbery	362	78	22	5,254	1,492	28	464	128	28	1.94	2.39	1.45
Assault *	689	340	49	11,646	5,913	51	872	449	51	4.31	4.11	2.75
Burglary	1,760	141	8	21,959	2,223	10	1,921	175	9	8.12	8.94	7.31
Larceny	3,242	767	24	41,615	12,463	30	3,749	1,339	36	15.40	18.34	21.67
MV Theft	776	53	7	10,078	838	8	809	64	8	3.73	5.88	3.15
Arson	27	3	11	448	94	21	38	3	8	0.17	0.24	0.24
Total	6,924	1,406	20	92,112	23,383	25	7,934	2,184	28	34.08	40.40	36.91

* The projected Crime Rate for Assaults is computed after subtracting Simple Assaults from the total for all Assaults following FBI guidelines. Therefore, this rate may be compared directly to the National Rate. See Table 3 and the "Footnotes/Exceptions page for further information.

Nevada UCR - - Monthly Crime/ Clearance Summary - - All Crimes

Contributing Agency	Est. Pop	Murder		Rape		Robbery		Assault		Burglary		Larceny		MV Theft		Arson		Total Crimes	Crime Rate	Clearances	Clearance Rate
Carson County																		December 2010			
Carson SO	57,723	0	0	0	0	1	0	60	39	26	3	68	24	5	0	0	0	160	2.77	66	41.3%
County Total	57,723	0	0	0	0	1	0	60	39	26	3	68	24	5	0	0	0	160	2.77	66	41.3%
Churchill County																					
Churchill SO	18,738	0	0	0	0	0	0	8	9	5	1	10	5	2	0	0	0	25	1.33	15	60.0%
Fallon PD	8,452	0	0	0	0	2	1	24	14	4	0	27	4	1	0	0	0	58	6.86	19	32.8%
County Total	27,190	0	0	0	0	2	1	32	23	9	1	37	9	3	0	0	0	83	3.05	34	41.0%
Clark County																					
Boulder PD	15,863	0	0	0	0	0	0	7	7	7	0	3	1	1	0	0	0	18	1.13	8	44.4%
Clark Co. Schools PD*	313,600	0	0	1	0	2	2	54	41	12	6	57	16	2	1	1	0	129	0.41	66	51.2%
Henderson	260,161	0	1	4	1	13	3	212	149	132	17	317	114	47	3	0	0	725	2.79	288	39.7%
LV Metro PD	1,449,036	9	6	46	8	308	55	2,358	1,017	1,283	65	1,940	334	638	33	11	0	6,593	4.55	1,518	23.0%
LV Fire Dept*																8	1	8	N/A	1	12.5%
Mesquite	18,787	0	1	0	0	0	1	11	8	5	0	12	4	3	1	0	0	31	1.65	15	48.4%
North Las Vegas PD	210,472	0	0	0	0	0	0	0	0	0	0	0	0	0	0	0	0	0	0.00	0	0.0%
Taxicab Authority		0	0	0	0	0	0	8	1	0	0	29	0	0	0	0	0	37	0.00	1	2.7%
UNLV PD*	30,850	0	0	0	0	0	0	4	2	0	0	7	0	4	0	0	0	15	0.49	2	13.3%
County Total	1,954,319	9	8	51	9	323	61	2,654	1,225	1,439	88	2,365	469	695	38	20	1	7,556	3.87	1,899	25.1%
Douglas County																					
Douglas SO	52,386	0	0	-1	0	0	0	50	31	8	1	52	25	2	1	3	1	114	2.18	59	51.8%
County Total	52,386	0	0	-1	0	0	0	50	31	8	1	52	25	2	1	3	1	114	2.18	59	51.8%

*Population figure not included in county total
Table 2

Nevada UCR - - Monthly Crime/ Clearance Summary - - All Crimes

Contributing Agency	Est. Pop	Murder		Rape		Robbery		Assault		Burglary		Larceny		MV Theft		Arson		Total Crimes	Crime Rate	Clearances	Clearance Rate
Elko County																		December 2010			
Elko SO	23,004	0	0	1	0	0	0	2	2	2	0	0	0	0	3	0	0	5	0.22	5	100.0%
Carlin PD	2,281	0	0	0	0	0	0	0	0	0	0	0	0	0	0	0	0	0	0.00	0	0.0%
Elko PD	18,183	0	0	0	0	1	0	32	18	10	1	20	6	1	0	0	0	64	3.52	25	39.1%
WestWendover PD	4,871	0	0	1	0	0	0	5	2	2	2	4	1	0	0	0	0	12	2.46	5	41.7%
County Total	48,339	0	0	2	0	1	0	39	22	14	3	24	7	1	3	0	0	81	1.68	35	43.2%
Esmeralda County																					
Esmeralda SO	1,262	0	0	0	0	0	0	0	0	0	0	0	0	0	0	0	0	0	0.00	0	0.0%
County Total	1,262	0	0	0	0	0	0	0	0	0	0	0	0	0	0	0	0	0	0.00	0	0.0%
Eureka County																					
Eureka SO	1,460	0	0	0	0	0	0	0	0	0	0	1	1	0	0	0	0	1	0.68	1	100.0%
County Total	1,460	0	0	0	0	0	0	0	0	0	0	1	1	0	0	0	0	1	0.68	1	100.0%
Humboldt County																					
Humboldt SO	10,108	0	0	0	0	0	0	3	3	0	0	1	0	0	0	0	0	4	0.40	3	75.0%
Winnemucca PD	7,643	0	0	0	0	1	1	5	5	1	1	4	2	1	0	0	0	12	1.57	9	
County Total	17,751	0	0	0	0	1	1	8	8	1	1	5	2	1	0	0	0	16	0.90	12	75.0%

*Population figure not included in county total
Table 2

6
Assault data includes ALL assaults (aggravated and simple).

Nevada UCR - - Monthly Crime/ Clearance Summary - - All Crimes

Contributing Agency	Est. Pop	Murder		Rape		Robbery		Assault		Burglary		Larceny		MV Theft		Arson		Total Crimes	Crime Rate	Clearances	Clearance Rate
Lander County																		December 2010			
Lander SO	5,655	0	0	0	0	0	0	5	5	7	6	0	0	1	1	0	0	13	2.30	12	92.3%
County Total	5,655	0	0	0	0	0	0	5	5	7	6	0	0	1	1	0	0	13	2.30	12	92.3%
Lincoln County																					
Lincoln SO	3,987	0	0	0	0	0	0	1	3	0	0	5	2	0	0	0	0	6	1.50	5	83.3%
County Total	3,987	0	0	0	0	0	0	1	3	0	0	5	2	0	0	0	0	6	1.50	5	83.3%
Lyon County																					
Lyon SO	50,774	0	0	0	0	2	0	42	42	27	2	29	9	0	0	0	0	100	1.97	53	53.0%
Yerington PD	3,257	0	0	0	0	0	0	2	0	0	0	1	0	0	0	0	0	3	0.92	0	0.0%
County Total	54,031	0	0	0	0	2	0	44	42	27	2	30	9	0	0	0	0	103	1.91	53	51.5%
Mineral County																					
Mineral SO	4,399	0	0	0	0	0	0	1	1	0	0	1	0	0	0	0	0	2	0.45	1	50.0%
County Total	4,399	0	0	0	0	0	0	1	1	0	0	1	0	0	0	0	0	2	0.45	1	50.0%
Nye County																					
Nye SO	44,795	0	0	0	0	4	9	45	28	18	1	46	8	2	0	0	0	115	2.57	46	40.0%
County Total	44,795	0	0	0	0	4	9	45	28	18	1	46	8	2	0	0	0	115	2.57	46	40.0%

*Population figure not included in county total
Table 2

Nevada UCR - - Monthly Crime/ Clearance Summary - - All Crimes

Contributing Agency	Est. Pop	Murder		Rape		Robbery		Assault		Burglary		Larceny		MV Theft		Arson		Total Crimes	Crime Rate	Clearances	Clearance Rate
Pershing County																		December 2010			
Pershing SO	4,528	0	0	0	0	0	0	2	2	2	0	1	1	0	0	0	0	5	1.10	3	60.0%
Lovelock PD	2,427	0	0	0	0	0	0	0	0	0	0	0	0	0	0	0	0	0	0.00	0	0.0%
County Total	6,955	0	0	0	0	0	0	2	2	2	0	1	1	0	0	0	0	5	0.72	3	60.0%
Storey County																					
Storey	4,110	0	0	0	0	0	0	3	0	0	3	1	0	1	0	0	0	5	1.22	3	60.0%
County Total	4,110	0	0	0	0	0	0	3	0	0	3	1	0	1	0	0	0	5	1.22	3	60.0%
Washoe County																					
Washoe SO	106,868	0	0	2	2	0	0	50	38	24	4	47	8	2	0	1	0	126	1.18	52	41.3%
Reno PD	214,371	1	1	1	2	20	3	267	132	121	6	386	139	48	6	0	0	844	3.94	289	34.2%
Sparks PD	87,846	0	0	2	1	8	3	106	67	58	22	140	51	15	4	0	0	329	3.75	148	45.0%
UNR PD*	16,671	0	0	0	0	0	0	0	0	3	0	9	0	0	0	0	0	12	0.72	0	0.0%
Washoe Co Schl PD*	68,366	0	0	0	0	0	0	0	0	0	0	18	11	0	0	3	1	21	0.31	12	57.1%
TMCC PD*	15,260	0	0	0	0	0	0	0	0	0	0	3	0	0	0	0	0	3	0.20	0	0.0%
County Total	409,085	1	1	5	5	28	6	423	237	206	32	603	209	65	10	4	1	1,335	3.26	501	37.5%
White Pine County																					
White Pine SO	9,542	1	1	0	0	0	0	8	6	3	0	3	1	0	0	0	0	15	1.57	8	53.3%
County Total	9,542	1	1	0	0	0	0	8	6	3	0	3	1	0	0	0	0	15	1.57	8	53.3%
Grand Total	2,702,989	11	10	57	14	362	78	3,375	1,672	1,760	141	3,242	767	776	53	27	3	9,610	3.56	2,738	28.5%

*Population figure not included in county total
Table 2

Nevada UCR - - Monthly Crimes/Clearances Summary - - Index Crimes
December 2010

Est. Pop	Murder		Rape		Robbery		*Assault		Burglary		Larceny		MV Theft		Arson		Total Crimes	Crime Rate	Total Clear	Clearance Rate	
Statewide Totals																					
(Crimes/Clearances)	2,702,989	11	10	57	14	362	78	689	340	1760	141	3242	767	776	53	27	3	6924	2.56	1406	20.31

Nevada (Projected 2010) vs National (2008) Index Crime Rates

(per 1,000 population)

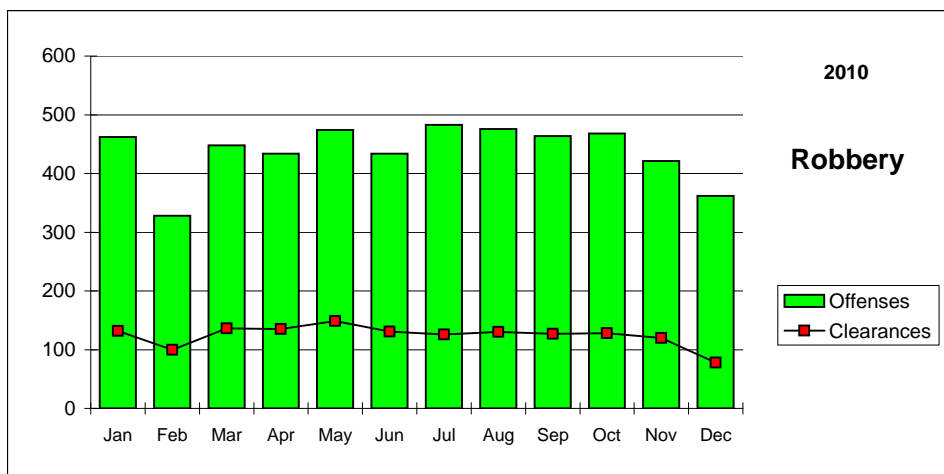
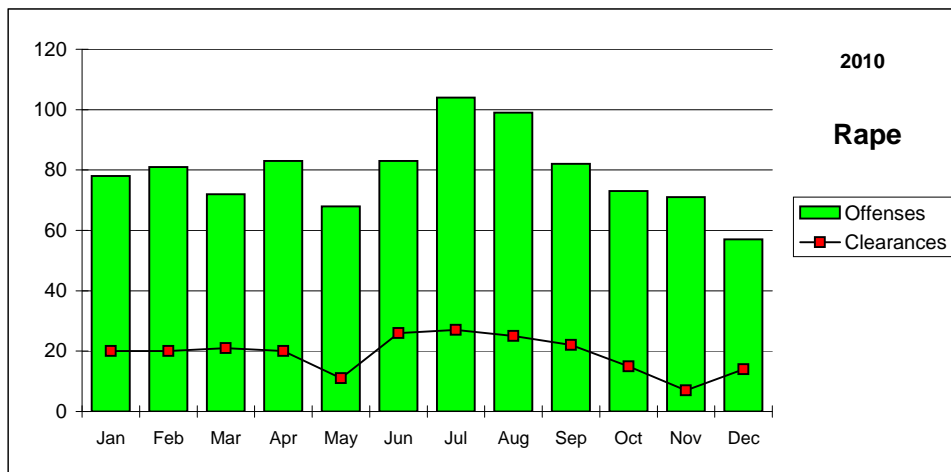
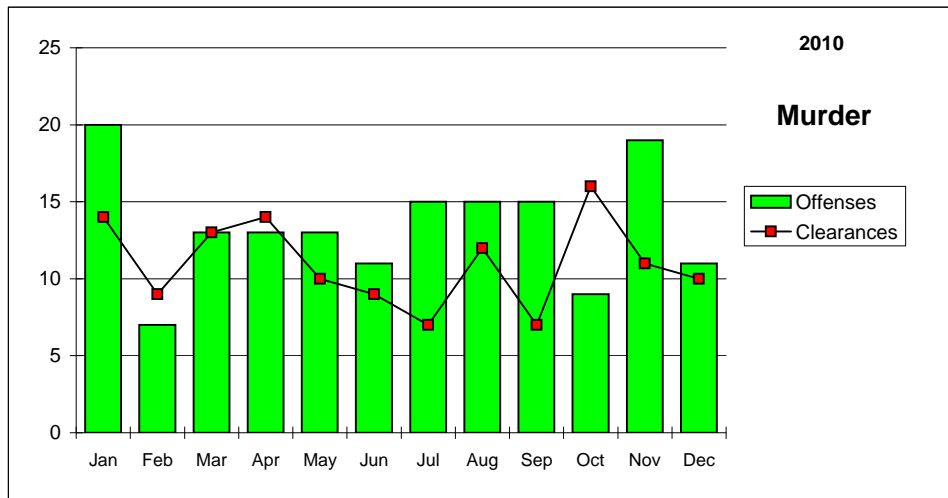
	Murder	Rape	Robbery	Assault	Burglary	Larceny	MV Theft	**Arson	Crime Rate
Nevada	0.06	0.35	1.94	4.31	8.12	15.40	3.73	0.17	34.08
National	0.05	0.29	1.45	2.75	7.31	21.67	3.15	0.24	36.91

Nevada (Projected 2010) vs National (2008) Crime Clearance Rates

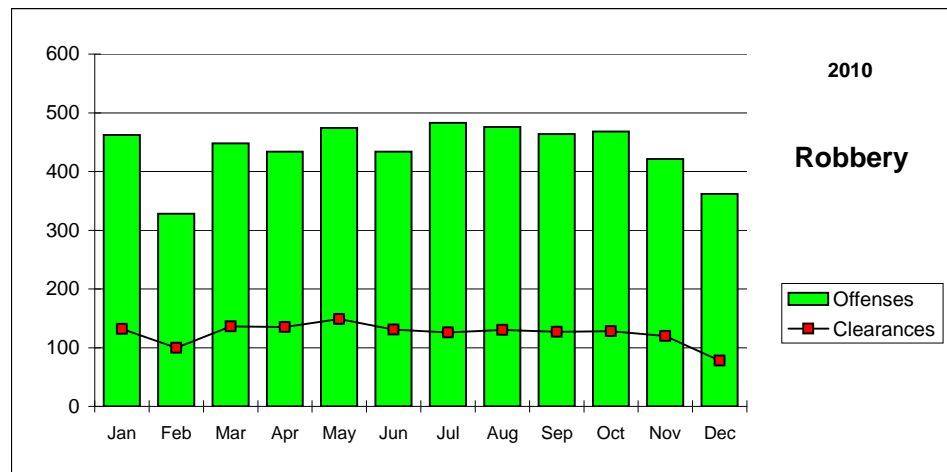
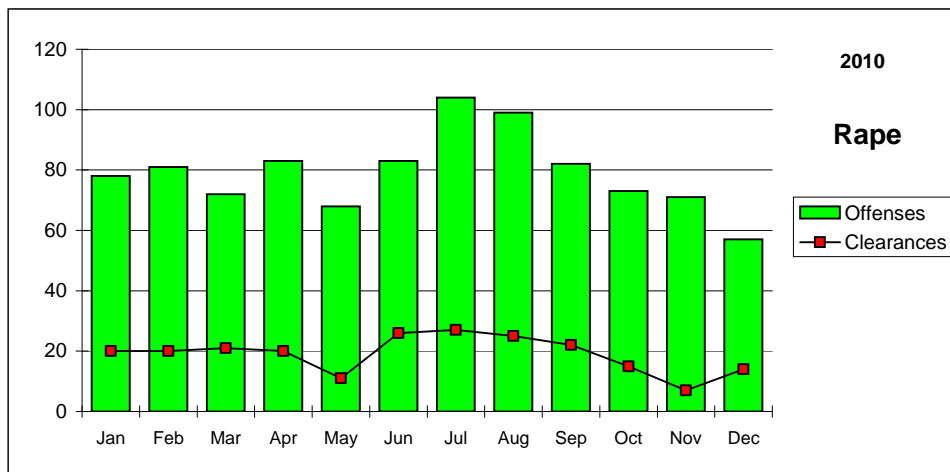
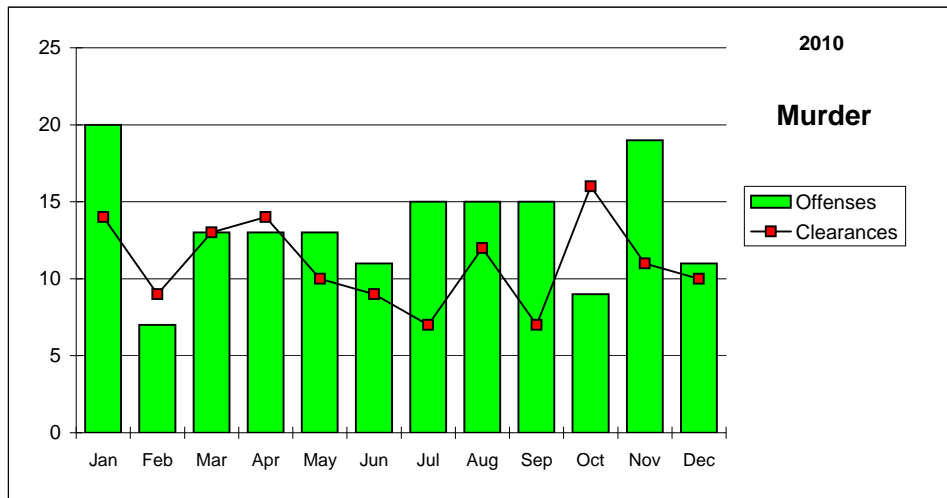
(by Percent)

	Murder	Rape	Robbery	Assault	Burglary	Larceny	MV Theft	Arson	Clear Rate
Nevada	82.0	24.0	28.4	50.8	10.1	29.9	8.3	21.0	20.3
National	63.6	40.4	26.8	54.9	12.5	19.9	12.0	17.8	31.0

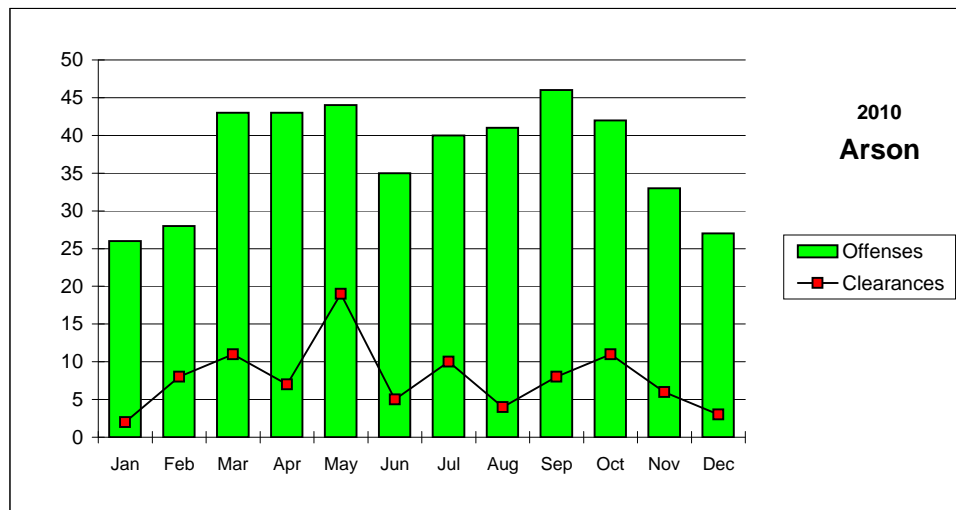
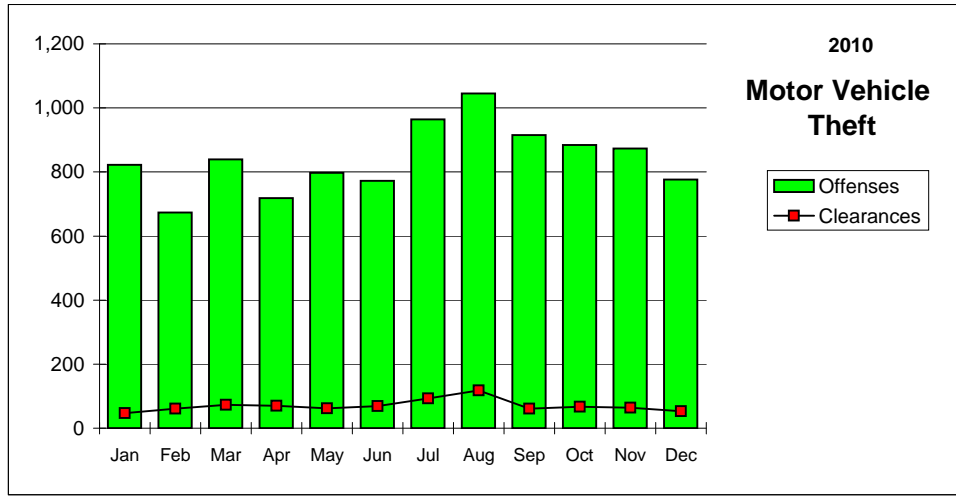
Nevada--Graphic Summary--UCR



Nevada--Graphic Summary--UCR



Nevada--Graphic Summary--UCR



Nevada--Murder--Incidence Level Variation--UCR

December 2010

Agency	December 2010 Offenses	December 2010 Cleared	2010 YTD Offenses	2010 YTD Cleared	December 2009 Offenses	December 2009 Cleared	2009 YTD Offenses	2009 YTD Cleared
Boulder	0	0	0	0	0	0	1	0
Carlin PD	0	0	0	0	0	0	0	0
Carson SO	0	0	0	0	0	0	0	0
Churchill SO	0	0	1	1	0	0	0	0
Clark Co Schl PD	0	0	0	0	0	0	0	0
Douglas SO	0	0	0	1	0	0	1	1
Elko PD	0	0	0	0	0	0	0	0
Elko SO	0	0	0	0	0	0	0	0
Esmeralda SO	0	0	0	0	0	0	0	0
Eureka SO	0	0	0	0	0	0	0	0
Fallon PD	0	0	0	0	0	0	0	0
Henderson PD	0	1	8	7	0	0	4	4
Humboldt SO	0	0	1	1	0	0	0	0
Lander SO	0	0	0	0	0	0	0	0
Lincoln SO	0	0	0	0	0	0	0	2
Lovelock PD	0	0	0	0	0	0	0	0
LV Fire Dept	0	0	0	0	0	0	0	0
LV Metro	9	6	111	87	10	11	122	95
Lyon SO	0	0	2	2	0	0	0	0
Mesquite PD	0	1	0	1	0	0	0	0
Mineral SO	0	0	0	0	0	0	0	0
NLVPD	0	0	15	9	1	1	17	11
Nye SO	0	0	4	3	0	0	2	2
Pershing SO	0	0	0	0	0	0	0	0
Reno PD	1	1	9	10	1	1	10	9
Sparks PD	0	0	8	6	1	0	5	5
Storey SO	0	0	0	0	0	0	1	1
Taxicab Authority	0	0	0	0	0	0	0	0
TMCC PD	0	0	0	0	0	0	0	0
UNLV PD	0	0	0	0	0	0	0	0
UNR PD	0	0	0	0	0	0	0	0
Washoe SO	0	0	1	3	0	0	5	4
Washoe Co Schl PD	0	0	0	0	0	0	0	0
Wendover PD	0	0	0	0	0	0	0	0
White Pine SO	1	1	1	1	1	1	1	1
Winnemucca PD	0	0	0	0	0	0	1	1
Yerington PD	0	0	0	0	0	0	0	0
TOTALS	11	10	161	132	14	14	170	136

Nevada--Rape--Incidence Level Variation--UCR

December 2010

Agency	December 2010 Offenses	December 2010 Cleared	2010 YTD Offenses	2010 YTD Cleared	December 2009 Offenses	December 2009 Cleared	2009 YTD Offenses	2009 YTD Cleared
Boulder	0	0	1	0	0	0	0	0
Carlin PD	0	0	0	0	0	0	1	1
Carson SO	0	0	1	0	0	0	1	0
Churchill SO	0	0	6	6	0	0	5	2
Clark Co Schl PD	1	0	2	0	0	0	4	0
Douglas SO	-1	0	3	2	1	1	10	2
Elko PD	0	0	14	3	0	0	18	0
Elko SO	1	0	1	1	0	0	7	2
Esmeralda SO	0	0	0	0	0	0	0	0
Eureka SO	0	0	0	0	0	0	1	1
Fallon PD	0	0	2	0	0	0	1	0
Henderson PD	4	1	35	27	7	3	56	36
Humboldt SO	0	0	0	0	0	0	0	0
Lander SO	0	0	11	11	0	0	8	5
Lincoln SO	0	0	0	0	0	0	0	0
Lovelock PD	0	0	1	0	0	0	1	0
LV Fire Dept	0	0	0	0	0	0	0	0
LV Metro	46	8	652	108	46	4	698	128
Lyon SO	0	0	3	2	0	0	2	2
Mesquite PD	0	0	1	0	0	0	0	1
Mineral SO	0	0	0	0	0	0	0	0
NLVPD	0	0	77	15	2	3	51	24
Nye SO	0	0	15	4	1	0	11	9
Pershing SO	0	0	7	2	0	0	3	0
Reno PD	1	2	46	19	4	0	84	13
Sparks PD	2	1	35	23	3	1	40	20
Storey SO	0	0	0	0	0	0	0	0
Taxicab Authority	0	0	0	0	0	0	0	0
TMCC PD	0	0	0	0	0	0	0	0
UNLV PD	0	0	0	0	0	0	1	0
UNR PD	0	0	0	0	0	0	0	0
Washoe SO	2	2	23	5	0	0	0	0
Washoe Co Schl PD	0	0	0	0	0	0	0	0
Wendover PD	1	0	8	0	3	0	9	0
White Pine SO	0	0	7	0	0	0	1	1
Winnemucca PD	0	0	0	0	0	0	1	0
Yerington PD	0	0	0	0	0	0	0	0
TOTALS	57	14	951	228	67	12	1,014	247

Nevada--Robbery--Incidence Level Variation--UCR

December 2010

Agency	December	December	2010	2010	December	December	2009	2009
	2010	2010	YTD	YTD	2009	2009	YTD	YTD
	Offenses	Cleared	Offenses	Cleared	Offenses	Cleared	Offenses	Cleared
Boulder	0	0	1	1	0	0	2	0
Carlin PD	0	0	0	0	0	0	0	0
Carson SO	1	0	20	9	3	2	26	17
Churchill SO	0	0	1	1	0	0	0	0
Clark Co Schl PD	2	2	37	20	2	0	44	24
Douglas SO	0	0	4	2	0	0	9	3
Elko PD	1	0	12	6	1	0	10	4
Elko SO	0	0	0	0	0	0	2	0
Esmeralda SO	0	0	0	0	0	0	0	0
Eureka SO	0	0	0	0	0	0	0	0
Fallon PD	2	1	8	2	0	0	3	1
Henderson PD	13	3	189	80	15	3	257	83
Humboldt SO	0	0	0	0	0	0	1	1
Lander SO	0	0	0	0	0	0	0	0
Lincoln SO	0	0	0	0	0	0	0	0
Lovelock PD	0	0	0	0	0	0	0	0
LV Fire Dept	0	0	0	0	0	0	0	0
LV Metro	308	55	4,003	1,081	346	94	4,495	1,181
Lyon SO	2	0	11	4	0	0	5	2
Mesquite PD	0	1	7	5	1	1	8	6
Mineral SO	0	0	0	0	0	0	0	0
NLVPD	0	0	411	110	51	12	587	158
Nye SO	4	9	39	28	4	2	48	26
Pershing SO	0	0	0	0	0	0	0	0
Reno PD	20	3	385	100	32	12	409	142
Sparks PD	8	3	103	37	5	1	112	43
Storey SO	0	0	0	0	0	0	1	0
Taxicab Authority	0	0	0	0	0	0	3	3
TMCC PD	0	0	0	0	0	0	1	0
UNLV PD	0	0	6	0	1	0	2	0
UNR PD	0	0	0	0	0	0	0	0
Washoe SO	0	0	11	3	1	1	11	3
Washoe Co Schl PD	0	0	0	0	0	0	1	1
Wendover PD	0	0	3	1	2	0	5	0
White Pine SO	0	0	1	1	0	0	1	1
Winnemucca PD	1	1	2	1	0	0	2	1
Yerington PD	0	0	0	0	0	0	0	0
TOTALS	362	78	5,254	1,492	464	128	6,045	1,700

Nevada--Aggravated Assault--Incidence Level Variation--UCR

December 2010

Agency	December 2010 Offenses	December 2010 Cleared	2010 YTD Offenses	2010 YTD Cleared	December 2009 Offenses	December 2009 Cleared	2009 YTD Offenses	2009 YTD Cleared
Boulder	0	0	12	10	1	1	11	6
Carlin PD	0	0	6	5	1	1	10	10
Carson SO	14	13	141	114	10	7	153	93
Churchill SO	0	1	31	27	0	0	18	15
Clark Co Schl PD	4	4	39	30	2	1	30	18
Douglas SO	2	1	54	37	5	6	87	56
Elko PD	5	3	48	31	4	1	60	32
Elko SO	2	2	11	10	1	1	16	9
Esmeralda SO	0	0	2	2	0	0	4	3
Eureka SO	0	0	8	5	0	0	8	8
Fallon PD	1	0	19	16	0	0	25	16
Henderson PD	13	11	311	228	21	14	295	198
Humboldt SO	3	3	49	42	5	5	50	47
Lander SO	1	1	32	30	0	0	15	12
Lincoln SO	0	2	7	5	0	0	2	2
Lovelock PD	0	0	13	10	1	1	7	4
LV Fire Dept	0	0	0	0	0	0	0	0
LV Metro	533	230	7,886	3,527	587	273	7,735	3,608
Lyon SO	3	3	79	70	11	10	104	96
Mesquite PD	1	1	21	20	0	0	4	2
Mineral SO	1	1	22	22	0	0	32	32
NLVPD	0	0	1,335	783	113	71	1,013	650
Nye SO	22	13	276	135	14	3	124	83
Pershing SO	2	2	18	8	1	1	17	12
Reno PD	51	27	728	416	54	27	971	476
Sparks PD	16	9	211	132	14	10	242	144
Storey SO	0	0	5	2	0	0	5	4
Taxicab Authority	0	0	2	2	0	0	1	1
TMCC PD	0	0	0	0	0	0	1	1
UNLV PD	0	0	4	3	0	0	4	3
UNR PD	0	0	10	8	0	0	0	0
Washoe SO	13	13	197	150	20	13	251	169
Washoe Co Schl PD	0	0	4	4	1	1	6	5
Wendover PD	1	0	8	4	0	0	15	2
White Pine SO	0	0	24	16	1	1	11	9
Winnemucca PD	0	0	10	9	1	1	24	18
Yerington PD	1	0	23	0	4	0	14	0
TOTALS	689	340	11,646	5,913	872	449	11,365	5,844

Nevada--All Assaults--Incidence Level Variation--UCR

December 2010

Agency	December 2010 Offenses	December 2010 Cleared	2010 YTD Offenses	2010 YTD Cleared	December 2009 Offenses	December 2009 Cleared	2009 YTD Offenses	2009 YTD Cleared
Boulder	7	7	105	89	2	2	87	59
Carlin PD	0	0	27	25	4	4	40	38
Carson SO	60	39	737	464	68	41	759	435
Churchill SO	8	9	160	143	7	5	139	136
Clark Co Schl PD	54	41	687	450	53	27	756	434
Douglas SO	50	31	616	420	49	45	591	436
Elko PD	32	18	336	169	28	19	412	226
Elko SO	2	2	25	23	4	3	32	18
Esmeralda SO	0	0	4	4	0	0	6	5
Eureka SO	0	0	10	7	0	0	11	9
Fallon PD	24	14	248	185	19	16	240	176
Henderson PD	212	149	2,824	2,149	201	144	2,885	1,944
Humboldt SO	3	3	56	47	7	7	58	55
Lander SO	5	5	166	152	10	6	118	100
Lincoln SO	1	3	45	30	6	2	42	32
Lovelock PD	0	0	36	29	1	1	48	40
LV Fire Dept	0	0	0	0	0	0	0	0
LV Metro	2,358	1,017	31,847	14,843	2,369	1,134	30,552	14,381
Lyon SO	42	42	556	525	43	40	567	530
Mesquite PD	11	8	176	144	18	16	167	149
Mineral SO	1	1	37	37	1	1	52	52
NLVPD	0	0	2,911	1,765	287	200	3,372	2,248
Nye SO	45	28	729	411	38	14	685	576
Pershing SO	2	2	22	9	1	1	24	14
Reno PD	267	132	3,415	1,944	331	178	4,420	2,226
Sparks PD	106	67	1,332	851	98	64	1,463	856
Storey SO	3	0	33	15	1	1	45	29
Taxicab Authority	8	1	56	45	3	2	83	37
TMCC PD	0	0	2	1	0	0	2	1
UNLV PD	4	2	44	28	2	2	28	21
UNR PD	0	0	15	11	0	0	0	0
Washoe SO	50	38	778	592	46	33	753	573
Washoe Co Schl PD	0	0	28	27	4	4	37	36
Wendover PD	5	2	127	53	10	3	140	55
White Pine SO	8	6	83	55	8	6	39	31
Winnemucca PD	5	5	96	95	13	13	135	124
Yerington PD	2	0	53	0	5	0	42	0
TOTALS	3,375	1,672	48,422	25,837	3,737	2,034	48,830	26,082

Nevada--Burglary--Incidence Level Variation--UCR

December 2010

Agency	December 2010	December 2010	2010	2010	December	December	2009	2009
	Offenses	Cleared	YTD	YTD	2009	2009	YTD	YTD
			Offenses	Cleared	Offenses	Cleared	Offenses	Cleared
Boulder	7	0	49	8	3	0	50	5
Carlin PD	0	0	14	6	1	0	17	13
Carson SO	26	3	281	68	22	4	268	61
Churchill SO	5	1	88	22	4	0	46	22
Clark Co Schl PD	12	6	166	52	17	5	180	41
Douglas SO	8	1	176	29	9	0	176	24
Elko PD	10	1	219	23	27	4	181	22
Elko SO	2	0	27	11	0	0	79	11
Esmeralda SO	0	0	1	0	0	0	0	0
Eureka SO	0	0	6	0	1	1	13	2
Fallon PD	4	0	54	7	2	2	64	18
Henderson PD	132	17	1,280	199	116	11	1,411	310
Humboldt SO	0	0	20	5	0	0	18	6
Lander SO	7	6	47	27	5	1	75	29
Lincoln SO	0	0	4	4	0	1	4	4
Lovelock PD	0	0	19	17	5	1	23	15
LV Fire Dept	0	0	0	0	0	0	0	0
LV Metro	1,283	65	13,824	842	1,242	85	13,512	923
Lyon SO	27	2	210	33	5	0	177	35
Mesquite PD	5	0	47	6	0	1	50	11
Mineral SO	0	0	18	9	3	1	14	5
NLVPD	0	0	1,953	157	166	12	1,913	175
Nye SO	18	1	468	56	53	1	321	43
Pershing SO	2	0	18	7	3	0	15	4
Reno PD	121	6	1,638	230	121	14	1,848	260
Sparks PD	58	22	699	271	78	26	850	285
Storey SO	0	3	17	6	3	0	19	2
Taxicab Authority	0	0	3	2	0	0	8	6
TMCC PD	0	0	3	0	1	0	12	1
UNLV PD	0	0	50	4	1	0	30	1
UNR PD	3	0	31	3	0	0	0	0
Washoe SO	24	4	386	83	20	4	445	86
Washoe Co Schl PD	0	0	5	3	1	1	17	3
Wendover PD	2	2	37	10	3	0	57	10
White Pine SO	3	0	50	11	3	0	37	0
Winnemucca PD	1	1	29	12	2	0	52	17
Yerington PD	0	0	22	0	4	0	47	0
TOTALS	1,760	141	21,959	2,223	1,921	175	22,029	2,450

Nevada--Larceny--Incidence Level Variation--UCR

December 2010

Agency	December 2010 Offenses	December 2010 Cleared	2010 YTD Offenses	2010 YTD Cleared	December 2009 Offenses	December 2009 Cleared	2009 YTD Offenses	2009 YTD Cleared
Boulder	3	1	53	7	5	1	61	8
Carlin PD	0	0	16	6	2	1	13	9
Carson SO	68	24	768	229	58	25	797	314
Churchill SO	10	5	92	34	6	1	113	38
Clark Co Schl PD	57	16	749	149	54	7	794	131
Douglas SO	52	25	605	120	31	11	500	106
Elko PD	20	6	431	68	24	6	435	68
Elko SO	0	0	18	15	4	3	98	20
Esmeralda SO	0	0	0	0	0	0	2	2
Eureka SO	1	1	11	3	1	0	10	0
Fallon PD	27	4	256	57	18	3	268	72
Henderson PD	317	114	3,406	1,138	337	152	3,141	997
Humboldt SO	1	0	27	5	1	1	17	4
Lander SO	0	0	40	20	5	2	66	35
Lincoln SO	5	2	34	11	2	0	38	8
Lovelock PD	0	0	33	24	2	2	34	24
LV Fire Dept	0	0	0	0	0	0	0	0
LV Metro	1,940	334	22,231	7,014	2,158	832	25,229	7,934
Lyon SO	29	9	439	175	25	10	399	142
Mesquite PD	12	4	189	79	15	9	177	66
Mineral SO	1	0	11	5	1	1	10	4
NLVPD	0	0	2,757	648	255	69	3,436	829
Nye SO	46	8	653	98	46	11	500	148
Pershing SO	1	1	28	4	0	1	22	6
Reno PD	386	139	5,101	1,458	446	117	6,209	1,533
Sparks PD	140	51	1,829	669	135	50	2,007	689
Storey SO	1	0	30	0	3	0	42	0
Taxicab Authority	29	0	441	166	34	7	449	122
TMCC PD	3	0	27	2	0	0	13	0
UNLV PD	7	0	181	12	17	1	151	11
UNR PD	9	0	169	11	0	0	0	0
Washoe SO	47	8	596	129	40	7	801	99
Washoe Co Schl PD	18	11	148	57	8	4	138	46
Wendover PD	4	1	80	10	4	0	88	14
White Pine SO	3	1	77	12	3	1	73	17
Winnemucca PD	4	2	81	28	9	4	93	46
Yerington PD	1	0	8	0	0	0	12	0
TOTALS	3,242	767	41,615	12,463	3,749	1,339	46,236	13,542

Nevada--MV Theft--Incidence Level Variation--UCR

December 2010

Agency	December 2010 Offenses	December 2010 Cleared	2010 YTD Offenses	2010 YTD Cleared	December 2009 Offenses	December 2009 Cleared	2009 YTD Offenses	2009 YTD Cleared
Boulder	1	0	18	0	0	0	8	0
Carlin PD	0	0	0	0	0	0	10	5
Carson SO	5	0	84	25	13	1	86	28
Churchill SO	2	0	33	4	1	1	15	6
Clark Co Schl PD	2	1	19	3	1	0	35	5
Douglas SO	2	1	37	8	3	0	30	4
Elko PD	1	0	48	5	2	1	49	3
Elko SO	0	3	4	10	3	3	24	11
Esmeralda SO	0	0	0	0	0	0	0	0
Eureka SO	0	0	1	0	0	0	2	1
Fallon PD	1	0	4	1	0	0	8	5
Henderson PD	47	3	510	22	43	2	619	25
Humboldt SO	0	0	6	5	1	1	6	2
Lander SO	1	1	8	7	1	1	18	14
Lincoln SO	0	0	1	0	0	1	9	4
Lovelock PD	0	0	4	1	0	0	1	1
LV Fire Dept	0	0	0	0	0	0	0	0
LV Metro	638	33	7164	446	567	37	8927	536
Lyon SO	0	0	58	19	5	0	58	20
Mesquite PD	3	1	18	1	1	0	16	4
Mineral SO	0	0	2	0	0	0	6	3
NLVPD	0	0	789	46	78	4	1166	68
Nye SO	2	0	134	24	8	0	96	13
Pershing SO	0	0	3	1	0	0	1	0
Reno PD	48	6	729	99	53	8	753	87
Sparks PD	15	4	233	44	16	3	248	53
Storey SO	1	0	3	1	0	0	3	1
Taxicab Authority	0	0	0	0	0	0	0	1
TMCC PD	0	0	0	0	0	0	0	0
UNLV PD	4	0	18	0	0	0	18	1
UNR PD	0	0	8	0	0	0	0	0
Washoe SO	2	0	115	61	11	1	122	19
Washoe Co Schl PD	0	0	2	1	0	0	3	1
Wendover PD	0	0	3	0	2	0	7	0
White Pine SO	0	0	9	3	0	0	7	1
Winnemucca PD	1	0	12	1	0	0	16	1
Yerington PD	0	0	1	0	0	0	0	0
TOTALS	776	53	10078	838	809	64	12367	923

Nevada--Arson--Incidence Level Variation--UCR

December 2010

Agency	December 2010 Offenses	December 2010 Cleared	2010 YTD Offenses	2010 YTD Cleared	December 2009 Offenses	December 2009 Cleared	2009 YTD Offenses	2009 YTD Cleared
Boulder	0	0	2	1	0	0	2	1
Carlin PD	0	0	1	1	0	0	0	0
Carson SO	0	0	3	0	2	0	12	3
Churchill SO	0	0	2	2	0	0	2	1
Clark Co Schl PD	1	0	34	9	3	2	32	17
Douglas SO	3	1	8	3	1	0	6	2
Elko PD	0	0	4	0	0	0	4	0
Elko SO	0	0	1	0	0	0	1	0
Esmeralda SO	0	0	1	1	0	0	0	0
Eureka SO	0	0	0	0	0	0	0	0
Fallon PD	0	0	2	0	0	0	1	1
Henderson PD	0	0	43	8	4	0	72	11
Humboldt SO	0	0	0	0	0	0	1	0
Lander SO	0	0	0	0	0	0	0	0
Lincoln SO	0	0	0	0	1	0	18	8
Lovelock PD	0	0	0	0	0	0	0	0
LV Fire Dept	8	1	85	10	6	0	78	7
LV Metro	11	0	155	0	12	0	193	0
Lyon SO	0	0	5	5	1	1	3	2
Mesquite PD	0	0	0	0	1	0	1	0
Mineral SO	0	0	0	0	0	0	1	1
NLVPD	0	0	17	11	1	0	20	4
Nye SO	0	0	11	4	1	0	8	3
Pershing SO	0	0	0	0	0	0	0	0
Reno PD	0	0	28	9	4	0	33	2
Sparks PD	0	0	17	13	1	0	24	7
Storey SO	0	0	2	1	0	0	0	0
Taxicab Authority	0	0	0	0	0	0	0	0
TMCC PD	0	0	0	0	0	0	0	0
UNLV PD	0	0	1	0	0	0	1	0
UNR PD	0	0	0	0	0	0	0	0
Washoe SO	1	0	8	4	0	0	2	0
Washoe CO Schl PD	3	1	12	9	0	0	8	0
Wendover PD	0	0	1	0	0	0	3	0
White Pine SO	0	0	4	2	0	0	2	1
Winnemucca PD	0	0	1	1	0	0	1	0
Yerington PD	0	0	0	0	0	0	0	0
TOTALS	27	3	448	94	38	3	529	71

State of Nevada

Hate Crimes Reports for December 2010

#	Agency	Date of Incident	UCR Offense	Location	Bias Motivation	Victim Type and Number	Offender Race and Number
1	LAS VEGAS METRO PD	12/5/2010	AGGRAVATED ASSAULT	HIGHWAY/ROAD/ALLEY/STREET	ANTI-HISPANIC	INDIVIDUAL-01	BLACK-06
2	LAS VEGAS METRO PD	12/7/2010	SIMPLE ASSAULT	HIGHWAY/ROAD/ALLEY/STREET	ANTI-MALE HOMOSEXUAL	INDIVIDUAL-01	BLACK-01
3	LAS VEGAS METRO PD	12/24/2010	DESTRUCTION/DAMAGE/VANDALISM	HIGHWAY/ROAD/ALLEY/STREET	ANTI-JEWISH	OTHER-01	UNKNOWN-00
4	LAS VEGAS METRO PD	12/30/2010	DESTRUCTION/DAMAGE/VANDALISM	HIGHWAY/ROAD/ALLEY/STREET	ANTI-JEWISH	OTHER-01	UNKNOWN-00
5	FALLON PD	12/13/2010	SIMPLE ASSAULT	SCHOOL/COLLEGE	ANTI-BLACK	INDIVIDUAL-01	WHITE-01

Stolen/Recovered Property Report

December 2010

Property Type	Boulder PD	Carlin PD	Carson SO	Churchill SO	Clark Co Schl PD	Douglas SO	Elko PD	Elko SO	Esmeralda SO
Currency									
Stolen	\$1,000	\$0	\$6,883	\$151,600	\$21,360	(\$12,948)	\$1,857	\$40	\$0
Recovered	\$0	\$0	\$98	\$0	\$0	\$0	\$0	\$0	\$0
% Recovered	0.0%	0.0%	1.4%	0.0%	0.0%	0.0%	0.0%	0.0%	0.0%
Jewelry									
Stolen	\$1,900	\$0	\$59,856	\$12,500	\$1,830	\$2,878	\$0	\$0	\$0
Recovered	\$0	\$0	\$1,813	\$0	\$0	\$0	\$0	\$0	\$0
% Recovered	0.0%	0.0%	3.0%	0.0%	0.0%	0.0%	0.0%	0.0%	0.0%
Clothing									
Stolen	\$0	\$0	\$1,089	\$0	\$275	\$3,552	\$2,000	\$0	\$0
Recovered	\$0	\$0	\$713	\$0	\$40	\$206	\$0	\$0	\$0
% Recovered	0.0%	0.0%	65.5%	0.0%	14.5%	5.8%	0.0%	0.0%	0.0%
Motor Vehicle									
Stolen	\$500	\$0	\$20,300	\$69,612	\$0	\$5,100	\$5,000	\$0	\$0
Recovered	\$0	\$0	\$13,801	\$11,000	\$0	\$25,000	\$5,000	\$0	\$0
% Recovered	0.0%	0.0%	68.0%	15.8%	0.0%	490.2%	100.0%	0.0%	0.0%
Office Equipment									
Stolen	\$0	\$0	\$2,930	\$0	\$20,940	\$0	\$0	\$0	\$0
Recovered	\$0	\$0	\$10	\$0	\$1,358	\$0	\$0	\$0	\$0
% Recovered	0.0%	0.0%	0.3%	0.0%	6.5%	0.0%	0.0%	0.0%	0.0%
TV, VCR, Camera, Etc.									
Stolen	\$218	\$0	\$3,730	\$2,017	\$80	\$3,520	\$4,635	\$0	\$0
Recovered	\$0	\$0	\$0	\$0	\$0	\$0	\$488	\$0	\$0
% Recovered	0.0%	0.0%	0.0%	0.0%	0.0%	0.0%	10.5%	0.0%	0.0%
Firearm									
Stolen	\$0	\$0	\$500	\$1,150	\$0	\$0	\$0	\$0	\$0
Recovered	\$0	\$0	\$0	\$600	\$0	\$0	\$0	\$0	\$0
% Recovered	0.0%	0.0%	0.0%	52.2%	0.0%	0.0%	0.0%	0.0%	0.0%
Household Goods									
Stolen	\$0	\$0	\$508	\$0	\$0	\$8,450	\$55	\$0	\$0
Recovered	\$0	\$0	\$0	\$0	\$0	\$0	\$0	\$0	\$0
% Recovered	0.0%	0.0%	0.0%	0.0%	0.0%	0.0%	0.0%	0.0%	0.0%
Consumable Goods									
Stolen	\$17	\$0	\$76	\$57	\$3	\$1,275	\$107	\$0	\$0
Recovered	\$0	\$0	\$30	\$18	\$0	\$154	\$42	\$0	\$0
% Recovered	0.0%	0.0%	39.5%	31.6%	0.0%	12.1%	39.3%	0.0%	0.0%
Livestock									
Stolen	\$0	\$0	\$0	\$0	\$0	\$0	\$0	\$0	\$0
Recovered	\$0	\$0	\$0	\$0	\$0	\$0	\$0	\$0	\$0
% Recovered	0.0%	0.0%	0.0%	0.0%	0.0%	0.0%	0.0%	0.0%	0.0%
Misc.									
Stolen	\$251,550	\$0	\$50,036	\$4,820	\$29,759	\$54,611	\$98,403	\$50	\$0
Recovered	\$0	\$0	\$2,655	\$0	\$3,969	\$2,469	\$17,342	\$0	\$0
% Recovered	0.0%	0.0%	5.3%	0.0%	13.3%	4.5%	17.6%	0.0%	0.0%
TOTALS									
Stolen	\$255,185	\$0	\$145,908	\$241,756	\$74,247	\$66,438	\$112,057	\$90	\$0
Recovered	\$0	\$0	\$19,120	\$11,618	\$5,367	\$27,829	\$22,872	\$0	\$0
% Recovered	0.0%	0.0%	13.1%	4.8%	7.2%	41.9%	20.4%	0.0%	0.0%

Stolen/Recovered Property Report

December 2010

Property Type	Eureka SO	Fallon PD	Henderson PD	Humboldt SO	Lander SO	Las Vegas Metro	Lincoln SO	Lovelock PD	Lyon SO
Currency									
Stolen	\$0	\$160	\$163,250	\$0	\$0	\$2,841,799	\$0	\$0	\$111,533
Recovered	\$0	\$0	\$736	\$0	\$0	\$8,995	\$0	\$0	\$0
% Recovered	0.0%	0.0%	0.5%	0.0%	0.0%	0.3%	0.0%	0.0%	0.0%
Jewelry									
Stolen	\$0	\$0	\$206,389	\$0	\$100	\$2,107,568	\$0	\$0	\$52,050
Recovered	\$0	\$0	\$16,747	\$0	\$0	\$26,782	\$0	\$0	\$5,425
% Recovered	0.0%	0.0%	8.1%	0.0%	0.0%	1.3%	0.0%	0.0%	10.4%
Clothing									
Stolen	\$0	\$230	\$41,833	\$0	\$0	\$415,577	\$0	\$0	\$216
Recovered	\$0	\$0	\$8,913	\$0	\$0	\$36,421	\$0	\$0	\$216
% Recovered	0.0%	0.0%	21.3%	0.0%	0.0%	8.8%	0.0%	0.0%	100.0%
Motor Vehicle									
Stolen	\$0	\$0	\$353,955	\$0	\$1,000	\$791,641	\$0	\$0	\$30,000
Recovered	\$0	\$0	\$232,050	\$0	\$1,000	\$660,762	\$0	\$0	\$29,500
% Recovered	0.0%	0.0%	65.6%	0.0%	100.0%	83.5%	0.0%	0.0%	98.3%
Office Equipment									
Stolen	\$0	\$0	\$66,635	\$0	\$0	\$577,213	\$0	\$0	\$900
Recovered	\$0	\$0	\$3,020	\$0	\$0	\$28,308	\$0	\$0	\$0
% Recovered	0.0%	0.0%	4.5%	0.0%	0.0%	4.9%	0.0%	0.0%	0.0%
TV, VCR, Camera, Etc.									
Stolen	\$0	\$270	\$112,794	\$1,000	\$0	\$920,016	\$0	\$0	\$6,659
Recovered	\$0	\$0	\$9,198	\$0	\$0	\$27,347	\$0	\$0	\$30
% Recovered	0.0%	0.0%	8.2%	0.0%	0.0%	3.0%	0.0%	0.0%	0.5%
Firearm									
Stolen	\$0	\$0	\$8,242	\$0	\$3,100	\$107,849	\$0	\$0	\$12,370
Recovered	\$0	\$0	\$2,999	\$0	\$2,650	\$1,836	\$0	\$0	\$0
% Recovered	0.0%	0.0%	36.4%	0.0%	85.5%	1.7%	0.0%	0.0%	0.0%
Household Goods									
Stolen	\$0	\$195	\$59,746	\$0	\$0	\$336,860	\$0	\$0	\$1,123
Recovered	\$0	\$0	\$424	\$0	\$0	\$6,135	\$0	\$0	\$78
% Recovered	0.0%	0.0%	0.7%	0.0%	0.0%	1.8%	0.0%	0.0%	6.9%
Consumable Goods									
Stolen	\$30	\$57	\$2,620	\$0	\$4	\$103,239	\$0	\$0	\$649
Recovered	\$0	\$0	\$1,150	\$0	\$0	\$15,789	\$0	\$0	\$143
% Recovered	0.0%	0.0%	43.9%	0.0%	0.0%	15.3%	0.0%	0.0%	22.0%
Livestock									
Stolen	\$0	\$0	\$119	\$0	\$0	\$10,000	\$0	\$0	\$0
Recovered	\$0	\$0	\$0	\$0	\$0	\$10,000	\$0	\$0	\$0
% Recovered	0.0%	0.0%	0.0%	0.0%	0.0%	100.0%	0.0%	0.0%	0.0%
Misc.									
Stolen	\$0	\$4,568	\$170,910	\$0	\$78	\$1,706,036	\$404	\$0	\$6,422
Recovered	\$0	\$449	\$33,636	\$0	\$30	\$64,545	\$0	\$0	\$450
% Recovered	0.0%	9.8%	19.7%	0.0%	38.5%	3.8%	0.0%	0.0%	7.0%
TOTALS									
Stolen	\$30	\$5,480	\$1,186,493	\$1,000	\$4,282	\$9,917,798	\$404	\$0	\$221,922
Recovered	\$0	\$449	\$308,873	\$0	\$3,680	\$886,920	\$0	\$0	\$35,842
% Recovered	0.0%	8.2%	26.0%	0.0%	85.9%	8.9%	0.0%	0.0%	16.2%

Stolen/Recovered Property Report

December 2010

Property Type	Mesquite PD	Mineral SO	NLVPD	Nye SO	Pershing SO	Reno PD	Sparks PD	Storey SO	Taxicab	TMCC PD
Currency										
Stolen	\$75	\$100	\$0	\$7,541	\$0	\$74,116	\$28,600	\$0	\$714	\$0
Recovered	\$0	\$0	\$0	\$5,171	\$0	\$0	\$1	\$0	\$0	\$0
% Recovered	0.0%	0.0%	0.0%	68.6%	0.0%	0.0%	0.0%	0.0%	0.0%	0.0%
Jewelry										
Stolen	\$650	\$0	\$0	\$6,762	\$0	\$80,730	\$42,928	\$0	\$0	\$0
Recovered	\$0	\$0	\$0	\$1,562	\$0	\$1,212	\$2,390	\$0	\$0	\$0
% Recovered	0.0%	0.0%	0.0%	23.1%	0.0%	1.5%	5.6%	0.0%	0.0%	0.0%
Clothing										
Stolen	\$74	\$0	\$0	\$355	\$0	\$29,534	\$12,920	\$0	\$5,300	\$0
Recovered	\$74	\$0	\$0	\$25	\$0	\$4,640	\$1,608	\$0	\$0	\$0
% Recovered	100.0%	0.0%	0.0%	7.0%	0.0%	15.7%	12.4%	0.0%	0.0%	0.0%
Motor Vehicle										
Stolen	\$3,500	\$0	\$0	\$22,200	\$0	\$254,346	\$82,300	\$2,500	\$0	\$0
Recovered	\$0	\$0	\$0	\$22,200	\$0	\$163,843	\$97,700	\$2,500	\$0	\$0
% Recovered	0.0%	0.0%	0.0%	100.0%	0.0%	64.4%	118.7%	100.0%	0.0%	0.0%
Office Equipment										
Stolen	\$400	\$0	\$0	\$3,869	\$0	\$50,903	\$16,007	\$0	\$0	\$0
Recovered	\$0	\$0	\$0	\$1,600	\$0	\$0	\$202	\$0	\$0	\$0
% Recovered	0.0%	0.0%	0.0%	41.4%	0.0%	0.0%	1.3%	0.0%	0.0%	0.0%
TV, VCR, Camera, Etc.										
Stolen	\$900	\$0	\$0	\$4,923	\$0	\$63,560	\$30,471	\$0	\$1,629	\$0
Recovered	\$0	\$0	\$0	\$0	\$0	\$479	\$5,434	\$0	\$0	\$0
% Recovered	0.0%	0.0%	0.0%	0.0%	0.0%	0.8%	17.8%	0.0%	0.0%	0.0%
Firearm										
Stolen	\$0	\$0	\$0	\$1,458	\$0	\$7,115	\$33,380	\$0	\$0	\$0
Recovered	\$0	\$0	\$0	\$250	\$0	\$0	\$0	\$0	\$0	\$0
% Recovered	0.0%	0.0%	0.0%	17.1%	0.0%	0.0%	0.0%	0.0%	0.0%	0.0%
Household Goods										
Stolen	\$0	\$0	\$0	\$33,099	\$0	\$18,039	\$75,968	\$0	\$0	\$0
Recovered	\$75	\$0	\$0	\$31	\$0	\$186	\$3,891	\$0	\$0	\$0
% Recovered	0.0%	0.0%	0.0%	0.1%	0.0%	1.0%	5.1%	0.0%	0.0%	0.0%
Consumable Goods										
Stolen	\$12	\$0	\$0	\$541	\$0	\$3,899	\$3,193	\$0	\$0	\$0
Recovered	\$0	\$0	\$0	\$96	\$0	\$972	\$1,042	\$0	\$0	\$0
% Recovered	0.0%	0.0%	0.0%	17.7%	0.0%	24.9%	32.6%	0.0%	0.0%	0.0%
Livestock										
Stolen	\$0	\$0	\$0	\$0	\$0	\$0	\$0	\$0	\$0	\$0
Recovered	\$0	\$0	\$0	\$0	\$0	\$0	\$0	\$0	\$0	\$0
% Recovered	0.0%	0.0%	0.0%	0.0%	0.0%	0.0%	0.0%	0.0%	0.0%	0.0%
Misc.										
Stolen	\$4,060	\$0	\$0	\$37,067	\$0	\$206,124	\$58,598	\$5,000	\$350	\$1,400
Recovered	\$34	\$0	\$0	\$0	\$0	\$20,382	\$14,368	\$0	\$0	\$0
% Recovered	0.8%	0.0%	0.0%	0.0%	0.0%	9.9%	24.5%	0.0%	0.0%	0.0%
TOTALS										
Stolen	\$9,671	\$100	\$0	\$117,815	\$0	\$788,366	\$384,365	\$7,500	\$7,993	\$1,400
Recovered	\$183	\$0	\$0	\$30,935	\$0	\$191,714	\$126,636	\$2,500	\$0	\$0
% Recovered	1.9%	0.0%	0.0%	26.3%	0.0%	24.3%	32.9%	33.3%	0.0%	0.0%

Stolen/Recovered Property Report

December 2010

Property Type	UNLV PD	UNR PD	Washoe SO	Washoe Co Schl PD	Wendover PD	White Pine SO	Winnemucca PD	Yerington PD	Total By Property
Currency									
Stolen	\$5	\$160	\$10,674	\$115	\$2,110	\$990	\$2,340	\$2,000	\$3,416,074
Recovered	\$0	\$0	\$0	\$0	\$2,100	\$0	\$0	\$0	\$17,101
% Recovered	0.0%	0.0%	0.0%	0.0%	99.5%	0.0%	0.0%	0.0%	0.5%
Jewelry									
Stolen	\$0	\$0	\$21,244	\$0	\$0	\$0	\$0	\$3,000	\$2,600,385
Recovered	\$0	\$0	\$0	\$0	\$0	\$0	\$0	\$0	\$55,931
% Recovered	0.0%	0.0%	0.0%	0.0%	0.0%	0.0%	0.0%	0.0%	2.2%
Clothing									
Stolen	\$0	\$0	\$1,610	\$0	\$0	\$30	\$0	\$0	\$514,595
Recovered	\$0	\$0	\$0	\$0	\$0	\$30	\$0	\$0	\$52,886
% Recovered	0.0%	0.0%	0.0%	0.0%	0.0%	100.0%	0.0%	0.0%	10.3%
Motor Vehicle									
Stolen	\$8,000	\$0	\$15,125	\$0	\$0	\$0	\$9,000	\$0	\$1,674,079
Recovered	\$9,400	\$0	\$17,000	\$0	\$0	\$0	\$0	\$0	\$1,290,756
% Recovered	117.5%	0.0%	112.4%	0.0%	0.0%	0.0%	0.0%	0.0%	77.1%
Office Equipment									
Stolen	\$0	\$15,938	\$3,596	\$3,694	\$0	\$0	\$0	\$0	\$763,025
Recovered	\$0	\$0	\$0	\$0	\$0	\$0	\$0	\$0	\$34,498
% Recovered	0.0%	0.0%	0.0%	0.0%	0.0%	0.0%	0.0%	0.0%	4.5%
TV, VCR, Camera, Etc.									
Stolen	\$3,320	\$0	\$27,554	\$2,673	\$278	\$276	\$1,000	\$0	\$1,191,523
Recovered	\$0	\$0	\$0	\$1,560	\$0	\$0	\$0	\$0	\$44,536
% Recovered	0.0%	0.0%	0.0%	58.4%	0.0%	0.0%	0.0%	0.0%	3.7%
Firearm									
Stolen	\$0	\$0	\$3,050	\$0	\$0	\$0	\$0	\$0	\$178,214
Recovered	\$0	\$0	\$150	\$0	\$0	\$0	\$0	\$0	\$8,485
% Recovered	0.0%	0.0%	4.9%	0.0%	0.0%	0.0%	0.0%	0.0%	4.8%
Household Goods									
Stolen	\$0	\$0	\$500	\$576	\$0	\$0	\$0	\$0	\$535,119
Recovered	\$0	\$0	\$0	\$400	\$0	\$0	\$0	\$0	\$11,220
% Recovered	0.0%	0.0%	0.0%	69.4%	0.0%	0.0%	0.0%	0.0%	2.1%
Consumable Goods									
Stolen	\$0	\$0	\$98	\$8	\$0	\$0	\$38	\$0	\$115,923
Recovered	\$0	\$0	\$0	\$8	\$0	\$0	\$38	\$0	\$19,482
% Recovered	0.0%	0.0%	0.0%	100.0%	0.0%	0.0%	100.0%	0.0%	16.8%
Livestock									
Stolen	\$0	\$0	\$0	\$0	\$0	\$0	\$0	\$0	\$10,119
Recovered	\$0	\$0	\$0	\$0	\$0	\$0	\$0	\$0	\$10,000
% Recovered	0.0%	0.0%	0.0%	0.0%	0.0%	0.0%	0.0%	0.0%	98.8%
Misc.									
Stolen	\$530	\$5,460	\$25,681	\$0	\$831	\$1,550	\$145	\$0	\$2,724,443
Recovered	\$1,215	\$0	\$200	\$0	\$104	\$0	\$0	\$0	\$161,848
% Recovered	229.2%	0.0%	0.8%	0.0%	0.0%	0.0%	0.0%	0.0%	5.9%
TOTALS									
Stolen	\$11,855	\$21,558	\$109,132	\$7,066	\$3,219	\$2,846	\$12,523	\$5,000	\$13,723,499
Recovered	\$10,615	\$0	\$17,350	\$1,968	\$2,204	\$30	\$38	\$0	\$1,706,743
% Recovered	89.5%	0.0%	15.9%	27.9%	68.5%	1.1%	0.3%	0.0%	12.4%

Nevada--Assaults on Officers by Agency--UCR

December 2010

Agency	December 2010 Offenses	December 2010 Cleared	2010 YTD Offenses	2010 YTD Cleared	December 2009 Offenses	December 2009 Cleared	2009 YTD Offenses	2009 YTD Cleared
Boulder	0	0	0	0	0	0	0	0
Carlin PD	0	0	5	4	0	0	1	0
Carson SO	1	1	16	16	0	0	15	15
Churchill SO	1	1	3	3	0	0	2	1
ClrkSchIDst PD	3	3	31	31	0	0	24	24
Douglas SO	1	1	10	10	1	1	11	10
Elko PD	0	0	12	9	0	0	15	14
Elko SO	0	0	0	0	0	0	0	0
Esmeralda SO	0	0	0	0	0	0	0	0
Eureka SO	0	0	0	0	0	0	0	0
Fallon PD	0	0	0	0	0	0	1	0
Henderson PD	2	2	44	43	1	1	28	25
Highway Patrol	1	0	6	0	0	0	18	18
Humboldt SO	0	0	0	0	0	0	0	0
Lander SO	0	0	0	0	0	0	0	0
Lincoln SO	0	0	0	0	0	0	3	3
Lovelock PD	0	0	0	0	0	0	0	0
LV Fire Dept	0	0	0	0	0	0	0	0
LV Metro	6	6	105	104	26	26	345	340
Lyon SO	2	2	13	11	2	2	10	10
Mesquite PD	0	0	1	1	0	0	2	2
Mineral SO	0	0	0	0	0	0	1	1
NV Div Investigations	0	0	0	0	0	0	0	0
NLVPD	0	0	95	88	11	11	102	100
Nye SO	2	2	37	36	0	0	9	4
Pershing SO	0	0	0	0	0	0	0	0
Reno PD	3	3	47	47	1	1	36	35
Sparks PD	1	1	16	8	0	0	17	0
Storey SO	0	0	2	2	0	0	2	1
Taxicab Authority	0	0	4	4	0	0	0	0
TMCC PD	0	0	0	0	0	0	0	0
UNLV PD	0	0	5	5	0	0	4	4
UNR PD	0	0	1	1	0	0	0	0
Washoe SO	0	0	0	0	0	0	13	0
Washoe Co Schl PD	0	0	0	0	0	0	0	0
Wendover PD	1	0	3	2	0	0	0	0
White Pine SO	1	0	2	1	1	0	0	0
Winnemucca PD	0	0	0	0	0	0	3	3
Yerington PD	0	0	0	0	0	0	0	0
TOTALS	25	22	458	426	43	42	662	610

Nevada -- Assaults by Agency/Weapon/Assignment -- UCR

December 2010

Agency	Total Assaults	Number Cleared	Firearm	Knife / Cutting Device	Other Danger. Weapon	Hands, Fists, Feet, Etc.	2-Officer Vehicle	1-Officer Vehicle- Alone	1-Officer Vehicle- Assisted	Det./Spec. Assign. - Alone	Det./Spec. Assign. - Assisted	Other- Alone	Other- Assisted
Boulder City PD	0	0	0	0	0	0	0	0	0	0	0	0	0
Carlin PD	0	0	0	0	0	0	0	0	0	0	0	0	0
Carson City SO	1	1	0	0	0	1	1	0	0	0	0	0	0
Churchill Co SO	1	1	0	0	0	1	0	0	1	0	0	0	0
Clark School Dist PD	3	3	0	0	0	3	0	1	0	0	0	0	2
Douglas Co SO	1	1	0	0	0	1	0	0	1	0	0	0	0
Elko PD	0	0	0	0	0	0	0	0	0	0	0	0	0
Elko Co SO	0	0	0	0	0	0	0	0	0	0	0	0	0
Esmeralda Co SO	0	0	0	0	0	0	0	0	0	0	0	0	0
Eureka Co SO	0	0	0	0	0	0	0	0	0	0	0	0	0
Fallon PD	0	0	0	0	0	0	0	0	0	0	0	0	0
Henderson PD	2	2	1	0	0	1	0	2	0	0	0	0	0
NV Highway Patrol	1	0	0	0	0	1	0	0	1	0	0	0	0
Humboldt Co SO	0	0	0	0	0	0	0	0	0	0	0	0	0
Lander Co SO	0	0	0	0	0	0	0	0	0	0	0	0	0
Lincoln Co SO	0	0	0	0	0	0	0	0	0	0	0	0	0
Lovelock PD	0	0	0	0	0	0	0	0	0	0	0	0	0
Las Vegas Fire Dept	0	0	0	0	0	0	0	0	0	0	0	0	0
Las Vegas Metro PD	6	6	0	2	2	2	1	3	1	0	1	0	0
Lyon Co SO	2	2	0	0	0	2	0	0	2	0	0	0	0
Mesquite PD	0	0	0	0	0	0	0	0	0	0	0	0	0
Mineral Co SO	0	0	0	0	0	0	0	0	0	0	0	0	0
NV Div of Investigations	0	0	0	0	0	0	0	0	0	0	0	0	0
North Las Vegas PD	0	0	0	0	0	0	0	0	0	0	0	0	0
Nye Co SO	2	2	0	0	0	2	0	1	1	0	0	0	0
Pershing Co SO	0	0	0	0	0	0	0	0	0	0	0	0	0
Reno PD	3	3	0	0	0	3	2	1	0	0	0	0	0
Sparks PD	1	1	0	0	0	1	0	0	1	0	0	0	0
Storey Co SO	0	0	0	0	0	0	0	0	0	0	0	0	0
Taxi Authority	0	0	0	0	0	0	0	0	0	0	0	0	0
TMCC PD	0	0	0	0	0	0	0	0	0	0	0	0	0
UNLV PD	0	0	0	0	0	0	0	0	0	0	0	0	0
UNR PD	0	0	0	0	0	0	0	0	0	0	0	0	0
Washoe Co SO	0	0	0	0	0	0	0	0	0	0	0	0	0
Washoe Co School PD	0	0	0	0	0	0	0	0	0	0	0	0	0
West Westwendover PD	1	0	0	0	0	1	0	0	1	0	0	0	0
White Pine Co SO	1	0	0	0	0	1	0	0	1	0	0	0	0
Winnemucca PD	0	0	0	0	0	0	0	0	0	0	0	0	0
Yerington PD	0	0	0	0	0	0	0	0	0	0	0	0	0
TOTALS	25	22	1	2	2	20	4	8	10	0	1	0	2

Nevada -- Officer Assaults by Activity/Weapon/Assignment -- UCR

December 2010

ACTIVITY TYPE	Total Assaults	Number Cleared	Firearm	Knife / Cutting Device	Other Danger. Weapon	Hands, Fists, Feet, Etc.	2-Officer Vehicle	1-Officer Vehicle- Alone	1-Officer Vehicle- Assisted	Det./Spec. Assign.-Alone	Det./Spec. Assign.- Assisted	Other- Alone	Other- Assisted
DOMESTIC / OTHER DISTURBANCE	15	15	1	1	0	13	3	4	6	0	0	0	2
BURGLARY IN PROGRESS	1	1	0	0	0	1	1	0	0	0	0	0	0
ROBBERY IN PROGRESS	0	0	0	0	0	0	0	0	0	0	0	0	0
ATTEMPTING OTHER ARREST	2	2	0	0	0	2	0	1	1	0	0	0	0
CIVIL DISORDER	0	0	0	0	0	0	0	0	0	0	0	0	0
HANDLING PRISONER	3	0	0	0	0	3	0	0	3	0	0	0	0
INVEST. SUSP. PERSONS / CIRCUM.	0	0	0	0	0	0	0	0	0	0	0	0	0
AMBUSH-NO WARNING	0	0	0	0	0	0	0	0	0	0	0	0	0
MENTALLY DERANGED	0	0	0	0	0	0	0	0	0	0	0	0	0
TRAFFIC PURSUITS / STOPS	3	3	0	0	2	1	0	3	0	0	0	0	0
ALL OTHER	1	1	0	1	0	0	0	0	0	0	1	0	0
TOTALS	25	22	1	2	2	20	4	8	10	0	1	0	2

Nevada--Assaults with Injury/without Injury--UCR

December 2010

Agency	Total Assaults by weapon	Firearm		Knife or Other Cutting Instruments		Other Dangerous weapons		Hands, Fists, Feet, Etc.	
		With personal injury	Without personal injury	With personal injury	Without personal injury	With personal injury	Without personal injury	With personal injury	Without personal injury
Boulder City PD	0	0	0	0	0	0	0	0	0
Carlin PD	0	0	0	0	0	0	0	0	0
Carson City SO	1	0	1	0	0	0	0	0	1
Churchill Co SO	1	0	1	0	0	0	0	0	1
Clark Co Schl Dist PD	3	0	3	0	0	0	0	0	3
Douglas Co SO	1	0	1	0	0	0	0	0	1
Elko Co SO	0	0	0	0	0	0	0	0	0
Elko PD	0	0	0	0	0	0	0	0	0
Esmeralda Co SO	0	0	0	0	0	0	0	0	0
Eureka Co SO	0	0	0	0	0	0	0	0	0
Fallon PD	0	0	0	0	0	0	0	0	0
Henderson PD	2	0	2	0	1	0	0	0	1
NV Highway Patrol	1	1	0	0	0	0	0	1	0
Humboldt Co SO	0	0	0	0	0	0	0	0	0
Lander Co SO	0	0	0	0	0	0	0	0	0
Las Vegas Metro PD	6	2	4	0	0	0	2	2	0
Lincoln Co SO	0	0	0	0	0	0	0	0	0
Lovelock PD	0	0	0	0	0	0	0	0	0
Lyon Co SO	2	0	2	0	0	0	0	0	2
Mesquite PD	0	0	0	0	0	0	0	0	0
Mineral Co SO	0	0	0	0	0	0	0	0	0
NV Div Investigations	0	0	0	0	0	0	0	0	0
North Las Vegas PD	0	0	0	0	0	0	0	0	0
Nye Co SO	2	0	2	0	0	0	0	0	2
Pershing Co SO	0	0	0	0	0	0	0	0	0
Reno PD	3	0	3	0	0	0	0	0	3
Sparks PD	1	0	1	0	0	0	0	0	1
Storey Co SO	0	0	0	0	0	0	0	0	0
Taxicab Authority	0	0	0	0	0	0	0	0	0
TMCC PD	0	0	0	0	0	0	0	0	0
UNLV PD	0	0	0	0	0	0	0	0	0
UNR PD	0	0	0	0	0	0	0	0	0
Washoe Co SO	0	0	0	0	0	0	0	0	0
Washoe Co School Dist.	0	0	0	0	0	0	0	0	0
West Wendover PD	1	0	1	0	0	0	0	0	1
White Pine Co SO	1	0	1	0	0	0	0	0	1
Winnemucca PD	0	0	0	0	0	0	0	0	0
Yerington PD	0	0	0	0	0	0	0	0	0
Totals	25	3	22	0	1	0	2	2	17

Nevada--Time of Assaults on Officers--UCR

December 2010

Agency	12:01-2:00	2:00-4:00	4:00-6:00	6:00-8:00	8:00-10:00	10:00-12:00	12:01-2:00	2:00-4:00	4:00-6:00	6:00-8:00	8:00-10:00	10:00-12:00
	AM	AM	AM	AM	AM	AM	PM	PM	PM	PM	PM	PM
Boulder City PD	0	0	0	0	0	0	0	0	0	0	0	0
Carlin PD	0	0	0	0	0	0	0	0	0	0	0	0
Carson City SO	0	0	0	0	0	0	0	0	0	1	0	0
Churchill Co SO	0	0	0	0	0	0	0	1	0	0	0	0
Clark Co Schl Dist PD	0	0	0	0	0	1	1	1	0	0	0	0
Douglas Co SO	0	0	0	0	0	0	0	1	0	0	0	0
Elko Co SO	0	0	0	0	0	0	0	0	0	0	0	0
Elko PD	0	0	0	0	0	0	0	0	0	0	0	0
Esmeralda Co SO	0	0	0	0	0	0	0	0	0	0	0	0
Eureka Co SO	0	0	0	0	0	0	0	0	0	0	0	0
Fallon PD	0	0	0	0	0	0	0	0	0	0	0	0
Henderson PD	1	0	0	0	0	0	0	1	0	0	0	0
Highway Patrol	0	0	0	0	0	1	0	0	0	0	0	0
Humboldt Co SO	0	0	0	0	0	0	0	0	0	0	0	0
Lander Co SO	0	0	0	0	0	0	0	0	0	0	0	0
Las Vegas Metro PD	0	0	1	0	0	0	0	2	1	0	1	1
Lincoln Co SO	0	0	0	0	0	0	0	0	0	0	0	0
Lovelock PD	0	0	0	0	0	0	0	0	0	0	0	0
Lyon Co SO	0	0	0	0	0	0	0	0	0	2	0	0
Mesquite PD	0	0	0	0	0	0	0	0	0	0	0	0
Mineral Co SO	0	0	0	0	0	0	0	0	0	0	0	0
NV Div Investigations	0	0	0	0	0	0	0	0	0	0	0	0
North LV PD	0	0	0	0	0	0	0	0	0	0	0	0
Nye Co SO	0	0	0	0	0	0	0	0	1	1	0	0
Pershing Co SO	0	0	0	0	0	0	0	0	0	0	0	0
Reno PD	0	0	0	0	1	0	0	0	1	0	0	1
Sparks PD	0	0	0	0	0	0	0	1	0	0	0	0
Storey Co SO	0	0	0	0	0	0	0	0	0	0	0	0
Taxicab Authority	0	0	0	0	0	0	0	0	0	0	0	0
TMCC PD	0	0	0	0	0	0	0	0	0	0	0	0
UNLV PD	0	0	0	0	0	0	0	0	0	0	0	0
UNR PD	0	0	0	0	0	0	0	0	0	0	0	0
Washoe Co SO	0	0	0	0	0	0	0	0	0	0	0	0
Washoe Co Schl PD	0	0	0	0	0	0	0	0	0	0	0	0
West Wendover PD	0	0	0	1	0	0	0	0	0	0	0	0
White Pine Co SO	1	0	0	0	0	0	0	0	0	0	0	0
Winnemucca PD	0	0	0	0	0	0	0	0	0	0	0	0
Yerington PD	0	0	0	0	0	0	0	0	0	0	0	0
Totals	2	0	1	1	1	2	1	7	3	4	1	2

Nevada -- Division Of Investigations

Arrests for Narcotics Violations

December 2010

		10- 13-																			Total	W	B	A	I										
		<10	12	14	15	16	17	18	19	20	21	22	23	24	25- 29	30- 34	35- 39	40- 44	45- 49	50- 54	55- 59	60- 64	>64	Total	W	B	A	I							
SALES/MANUFACTURING VIOLATIONS																																			
Opium or cocaine and their derivatives (morphine, heroin codeine)	M																									0									
	F																									0									
Marijuana	M	1							1							1					3	3													
	F																									1	1								
Synthetic narcotics- Manufactured narcotics that can cause true drug addiction (demerol, meth)	M																									0									
	F																									0									
Other dangerous, non-narcotic, drugs (barbituates, benzderine)	M															1	1					2	2												
	F															1		1					2	2											
Sub-Total	M	0	0	0	0	0	0	0	1	0	0	0	0	0	1	1	1	0	0	1	0	0	0	0	5	5	0	0	0						
	F	0	0	0	0	0	0	0	0	0	0	0	0	0	1	1	0	0	1	0	0	0	0	0	3	3	0	0	0						
POSSESSION VIOLATIONS																																			
Opium or cocaine and their derivatives (morphine, heroin codeine)	M																		1	1															
	F																									0									
Marijuana	M	1							1	1	2	1									6	5	1												
	F																									1	2					1	4	4	
Synthetic narcotics- Manufactured narcotics that can cause true drug addiction (demerol, meth)	M																									0									
	F																									0									
Other dangerous, non-narcotic, drugs (barbituates, benzderine)	M																		1	1															
	F																		1	1															
Sub-Total	M	0	0	0	0	0	1	0	0	0	1	1	2	0	0	1	2	0	0	0	0	0	0	8	7	1	0	0							
	F	0	0	0	0	0	0	0	0	0	1	0	0	2	0	1	0	1	0	0	0	0	0	5	5	0	0	0							
Total		0	0	0	0	0	1	0	1	0	2	1	2	4	2	3	2	2	1	0	0	0	0	21	20	1	0	0							

AGE, RACE AND SEX OF PERSONS CHARGED

18 Years of Age and over

December 2010

CLASSIFICATION OF OFFENSES	SEX	18	19	20	21	22	23	24	25-29	30-34	35-39	40-44	45-49	50-54	55-59	60-64	over 65	Total Over 18	RACE				
																			White	Black	American Indian or Alaskan Native	Asian or Pacific Islander	
Murder and Nonnegligent Manslaughter	01a	Male	1	2				1	1	5	3							13					
		Female										1						1	10	2		2	
Manslaughter by Negligence	01b	Male								1								1	1				
		Female																0	1				
Forcible Rape	02	Male	2				1		2	1		2		2				10	8	2			
		Female																0					
Robbery	03	Male	5	9	3	9	4	2	5	18	12	7	4	4				82					
		Female	1	2	1		5	1	1	1		1						13	43	51		1	
Aggravated Assault (Return A-4a-d)	04	Male	7	8	1	9	5	10	10	34	33	29	21	17	22	8	6	4	224				
		Female	1	2	4	2	7	3	4	13	6	6	5	8	6	1	1	1	70	203	76	4	11
Burglary--Breaking or Entering	05	Male	13	6	5	6	3	8	8	24	19	10	10	9	5	1	2	129					
		Female	1		1	2	3	3		9	4	7	4	4	1	1		40	139	26	2	2	
Larceny--Theft (except Motor Vehicle Theft)	06	Male	30	24	20	21	19	12	15	71	43	51	50	47	27	19	12	7	468				
		Female	44	20	11	19	10	16	13	64	48	25	27	27	21	13	2	6	366	616	185	13	20
Motor Vehicle Theft	07	Male	2	6	3	1	2			6	2	6	4					32					
		Female			1			1	1	2	1	2						8	31	6	2	1	
Other Assaults (Return A-4e)	08	Male	10	17	26	24	30	27	22	147	99	110	76	56	42	20	10	11	727				
		Female	18	7	9	16	14	18	19	63	43	23	29	21	23	12	3	4	322	752	237	11	49
Arson	09	Male		1			1				1							3					
		Female																0	3				
Forgery & Counterfeiting	10	Male	1	1		2		2		9	8	4	10		1	2		1	41				
		Female	1	1				1		9	6	1	4		1			24	48	15		2	
Fraud	11	Male	3	3	2	1	2	2	3	9	12	8	11	5	6	4	2		70				
		Female	1	2	2	2	4		1	13	9	5	3	3	4		1	50	78	35	3	4	
Embezzlement	12	Male	1	4	3	1				4	4	2	2	1				22					
		Female	1		1	2	1		2	4	1	2	2	2	2			20	30	11		1	
Stolen Property; Buying, Receiving, Possessing	13	Male	3	7	3	1	2	1	1	13	11	10	5	7	2			66					
		Female			1	2	1		1	3	5	1	1					15	65	14	2		
Vandalism	14	Male	9	11	6	5	6	8	6	20	12	5	8	9	1	2	1	1	110				
		Female	2	1		1				1	2			1				8	89	22	4	3	
Weapons; Carrying, Possessing, etc.	15	Male	8	4	8	4	2	4	3	29	14	9	2	7	2	2		100					
		Female	1			1		1		1	3							8	78	28		2	
Prostitution and Commercialized Vice	16	Male	1	2	2	3	2	4	1	12	6	11	7	5	3	2	3		64				
		Female	12	23	23	20	23	12	15	46	28	12	21	11	5	1	1	253	169	133	1	14	
Sex Offenses (except Forcible Rape and Prostitution)	17	Male	7	4	3	3	3	5	2	10	8	8	12	12	10	3	2	4	96				
		Female						1	1	1								4	81	16	1	2	
Drug Abuse Violations	18	Male	51	64	59	53	45	50	49	176	109	77	70	54	48	14	6	0	925				
		Female	9	8	8	15	6	6	11	33	34	18	13	15	4	1	0	0	181	762	310	8	26
(1) Sale/Manufacturing Subtotal	180	Male	4	9	10	10	12	12	6	30	20	20	6	7	7	1	1	0	155				
		Female	2	2	0	4	2	1	0	3	7	2	3	1	0	1	0	0	28	119	58	2	4
Opium or Cocaine and Their Derivatives (Morphine, Heroin, Codeine)	a	Male		1	2	3	4	4	2	10	7	6	1	1	3		1	45					
		Female	1			1				1	3		1					7	31	20	1		
Marijuana	b	Male	2	2	4	5	3	4	3	8	8	7	2	3	2			53					
		Female	1			1	1	1		1	2							7	26	30	1	3	
Synthetic Narcotics--Manufactured Narcotics Which Can Cause True Drug Addiction (Demerol, Methadon)	c	Male	1	1	3	2	2	2		9	3	3	3	1	2	1		33					
		Female								1	2	2		1				6	36	3			
Other Dangerous Non-Narcotic Drugs (Barbiturates, Benzadrine)	d	Male	1	5	1		3	2	1	3	2	4		2				24					
		Female		2		2	1					2				1		8	26	5		1	

CLASSIFICATION OF OFFENSES		SEX																Total Over 18	RACE				
			18	19	20	21	22	23	24	25-29	30-34	35-39	40-44	45-49	50-54	55-59	60-64		over 65	White	Black	American Indian or Alaskan Native	Asian or Pacific Islander
		Male	47	55	49	43	33	38	43	146	89	57	64	47	41	13	5	0	770				
(2) Possession - Subtotal	185	Female	7	6	8	11	4	5	11	30	27	16	10	14	4	0	0	0	153	643	252	6	22
Opium or Cocaine and Their Derivatives (Morphine, Heroin, Codeine)	e	Male	1	5		5	2	5	8	23	6	3	11	9	14	2			94				
		Female	1		2	3	1	1	1	3	4		3	1					20	68	45	1	
Marijuana	f	Male	43	43	42	30	24	29	32	97	57	30	24	20	17	9	4		501				
		Female	5	5	3	4	3	2	5	14	8	6	3	5					63	376	170	4	14
Synthetic Narcotics-Manufactured Narcotics Which Can Cause True Drug Addiction (Demerol, Methadon)	g	Male	1	5	4	4	4	2	2	17	19	18	24	16	8	1			125				
		Female	1	1	1	2		2	2	10	10	6	3	5	3				46	143	20	1	7
Other Dangerous Non-Narcotic Drugs (Barbiturates, Benzedrine)	h	Male	2	2	3	4	3	2	1	9	7	6	5	2	2	1	1		50				
		Female			2	2				3	3	5	4	1	3	1			24	56	17		1
Gambling Total	19	Male	0	1	1	0	0	0	0	0	0	0	0	0	0	0	0	0	2				
Bookmaking (Horses and Sports Book)	a	Female	0	0	0	0	0	0	0	0	0	0	0	0	0	0	0	0	0	2	0	0	0
		Male																	0				
Numbers and Lottery	b	Female																	0				
		Male		1	1														2				
All Other Gambling	c	Female																	0	2			
Offenses Against Family and Children	20	Male	3	4	3	3	3	1	1	9	5	7	5	2	1	3		2	52				
		Female	1			2		1	1	8	4	4	3	2					26	56	16	4	2
Driving Under the Influence	21	Male	14	21	19	48	18	28	26	134	114	101	73	65	42	18	11	797					
		Female	1	6	7	11	9	8	11	47	33	29	28	19	18	6	7	4	244	874	123	12	32
Liquor Laws	22	Male	46	44	46	10	8	4	1	21	15	24	20	30	28	12	6	3	318				
		Female	13	20	15	4				3	3	3	9	6	4	1	1		82	307	71	12	10
		Male			2	1				1	3	2	2	2		1	1		15				
Drunkenness	23	Female					1	1				1							3	17		1	
		Male	3		5	7	8	6	4	15	11	7	6	10	12	6	1	2	103				
Disorderly Conduct	24	Female	2		1		1		1	6	1	2	3						17	89	22	7	2
		Male	2	3			1			4	3	2	8	7	7	3	2	1	43				
Vagrancy	25	Female	5	6	11		1			1		1	1	1					27	41	27	1	1
All Other Offenses (except Traffic) Total	26	Male	86	89	89	111	104	88	75	449	311	244	285	287	221	120	71	32	2662				
		Female	19	43	44	62	56	62	58	184	121	91	106	54	33	13	6	4	956	2556	938	49	75
		Male																	0				
Suspicion	27	Female																	0				
GRAND TOTAL			438	476	449	484	409	397	374	1730	1214	967	955	812	629	313	167	99	9913	7148	2366	137	262

AGE, SEX, AND RACE OF PERSONS CHARGED

December 2010

18 Years of age and under

(Count all Offences even if the Arrest is based on only one charge)

CLASSIFICATION OF OFFENSES	SEX	AGE						Total Under 18	RACE					
		Under 10	10-12	13-14	15	16	17		White	Black	American Indian or Alaskan Native	Asian or Pacific Islander		
Murder and Nonnegligent Manslaughter	01a	Male					1	1						
		Female						0	1					
Manslaughter by Negligence	01b	Male						0						
		Female						0						
Forcible Rape	02	Male		1				1						
		Female						0	1					
Robbery	03	Male			3	7	2	12						
		Female		2		1		3	6	9				
Aggravated Assault (Return A-4a-d)	04	Male	1	2	6	7	8	24						
		Female		1	2	3	4	10	29	4	1			
Burglary--Breaking or Entering	05	Male	2	5	4	4	6	21						
		Female		4	1	2	1	8	26	2	1			
Larceny--Theft (except Motor Vehicle Theft)	06	Male	1	15	27	36	45	37	161					
		Female		15	33	46	32	41	167	236	67	7	18	
Motor Vehicle Theft	07	Male			2	5	2	4	13					
		Female					1	1	2	9	6			
Other Assaults (Return A-4e)	08	Male	2	14	23	21	29	25	114					
		Female		10	19	15	23	15	82	146	42	2	6	
Arson	09	Male				1		1						
		Female						0	1					
Forgery & Counterfeiting	10	Male						0						
		Female						0						
Fraud	11	Male				3		3						
		Female						0	3					
Embezzlement	12	Male						0						
		Female						0						
Stolen Property; Buying, Receiving, Possessing	13	Male			1	2	2	3	8					
		Female		1	3	2	2	1	9	13	4			
Vandalism	14	Male		13	34	22	20	20	109					
		Female		2	2			4	96	7	3	7		
Weapons; Carrying, Possessing, etc.	15	Male		1	10	2	3	1	17					
		Female				1		1	14	1	1	2		
Prostitution and Commercialized Vice	16	Male						0						
		Female					1	1	2	1	1			
Sex Offenses (except Forcible Rape and Prostitution)	17	Male			2			2						
		Female		1				1	1	2				
Drug Abuse Violations	18	Male	0	8	28	34	37	45	152					
Grand Total		Female	0	2	10	4	6	5	27	140	35	0	4	
(1) Sale/Manufacturing Subtotal	180	Male	0	1	8	5	9	6	29					
		Female	0	0	1	1	3	0	5	28	5	0	1	
Opium or Cocaine and Their Derivatives (Morphine, Heroin, Codeine)	a	Male			1				1					
		Female							0		1			
Marijuana	b	Male		1	5	2	7	3	18					
		Female		1	1	1	1	3	3	17	3		1	
Synthetic Narcotics--Manufactured Narcotics Which Cause True Drug Addiction (Dem)	c	Male							0					
		Female							0					
Other Dangerous Non-Narcotic Drugs (Barbiturates, Benzadrine)	d	Male			2	3	2	3	10					
		Female					2	2	2	11	1			
(2) Possession - Subtotal	185	Male	0	7	20	29	28	39	123					
		Female	0	2	9	3	3	5	22	112	30	0	3	
Opium or Cocaine and Their Derivatives (Morphine, Heroin, Codeine)	e	Male			1	2		2	5					
		Female							0	4	1			
Marijuana	f	Male		7	18	23	27	33	108					
		Female		2	8	2	2	5	19	98	26		3	
Synthetic Narcotics--Manufactured Narcotics Which Cause True Drug Addiction (Dem)	g	Male				2	1	3	6					
		Female			1		1	2	2	6	2			
Other Dangerous Non-Narcotic Drugs (Barbiturates, Benzadrine)	h	Male			1	2		1	4					
		Female				1		1	4	4	1			

CLASSIFICATION OF OFFENSES	SEX	Under 10	10-12	13-14	15	16	17	Total Under 18	RACE				
									White	Black	American Indian or Alaskan Native	Asian or Pacific Islander	
Gambling Total	19	Male	0	0	0	0	0	0	0	0	0	0	0
		Female	0	0	0	0	0	0	0	0	0	0	0
Bookmaking (Horses and Sports Book)	a	Male						0					
		Female						0					
Numbers and Lottery	b	Male						0					
		Female						0					
All Other Gambling	c	Male						0					
		Female						0					
Offenses Against Family and Children	20	Male			1	1	1	3	3	1			
		Female			1			1					
Driving Under the Influence	21	Male					2	2					
		Female				3	3	3	5				
Liquor Laws	22	Male	1	7	9	20	25	62	86	12			6
		Female		7	13	16	6	42					
Drunkenness	23	Male					2	2					
		Female			1	1		2	4				
Disorderly Conduct	24	Male	1	12	15	6	19	53	54	30	1		3
		Female		8	10	10	7	35					
Vagrancy	25	Male						0					
		Female						0					
All Other Offenses (except Traffic) Total	26	Male	2	6	43	40	64	53	208	224	49	1	3
		Female	1	3	17	16	17	15	69				
Suspicion	27	Male						0					
		Female						0					
Curfew and Loitering Law Violatic	28	Male	2	18	16	15	19	70					
		Female	2	7	8	8	9	34	78	23			3
Runaway	29	Male	1	9	5	8	3	26					
		Female	1	6	10	14	6	37	47	15			1
GRAND TOTAL			8	105	342	352	416	381	1604	1224	310	17	53



Nevada UCR *Footnotes / Exceptions

December 2010

Table 1

--Nevada figures are annualized projections.

--"Assault" does not include simple assaults to allow direct comparison between the Nevada rate and the National rate for this Index offense. See Table 8 for a count of all assaults.

Table 2

--The LV Fire Department reports "Arson" offenses for the City of Las Vegas. The population figure for this agency represents jurisdiction and is not added to the county total. Similarly, the School District Police Departments in Clark and Washoe Counties are not added to county population estimates as they represent persons served (student enrollment plus staff.)

--Assault data in this table includes ALL assaults (aggravated and simple) reported for the current month.

--County crime rates are calculated following subtraction of populations of jurisdictions failing to report.

Table 3

-- In the "Nevada vs National Index Crime and Clearance Rates" sections, the "Assaults" numbers do not include simple assaults following FBI guidelines. Therefore, they may be compared directly to National rates.

-- National crime rate figures are the latest available for comparative use (2005). Nevada figures are annualized projections.

Table 13

--At various times, property values recovered will exceed values stolen for the current reporting period.

General Notes:

The following agencies were unable to submit reports for this month:

Lovelock Police Department
North Las Vegas Police Department

-- Any late reports not submitted in time for this publication will be incorporated in to the year-to-date totals in subsequent reports.