



**UNIFORM CRIME REPORTING PROGRAM**  
**UCR STATISTICAL DATA VERIFICATION FORM**

As an agency administrator or designee for the \_\_\_\_\_, I have  
(Name of Agency)  
reviewed the UCR monthly statistics for **October 2007** which includes all UCR data submitted  
year to date. Based upon my or my designee's review and validation of same, I find that:

All data contained in the report for my agency is accurate and complete and may be  
released and made part of UCR publications for future distribution to the public and other  
interested UCR data subscribers.

Data contained in the report is inaccurate or incomplete and may not be published or  
released at this time. (If this choice is selected, please provide the reason in the space  
provided below.)

Reason: \_\_\_\_\_  
\_\_\_\_\_  
\_\_\_\_\_

**The corrected data will be supplied to the UCR Program by: \_\_\_\_\_.**  
**(Date )**

This document must be signed and mailed to the Uniform Crime Reporting Program, 333 W.  
Nye Lane Suite 100, Carson City, Nevada 89706 or faxed to (775) 684-6268 by **March 26,**  
**2008.**

\_\_\_\_\_  
**Signature of Agency Administrator (or designee)**

\_\_\_\_\_  
**Name/Title of Agency Administrator (print or type)**

\_\_\_\_\_  
**Agency's Name/Location**

\_\_\_\_\_  
**Date**



**Disclaimer: The following information is preliminary and cannot be certified until it is published in the annual report, Crime and Justice in Nevada, which will be available after July 1, 2008.**



# Monthly Report



**October  
2007**



**Jearld L. Hafen, Director  
Department of Public Safety**

**Capt Philip K. O'Neill, Division Chief  
Records and Identification Bureau**

**Josh Porter, Statistician II  
Pam Sebring, Administrative Assistant IV  
Sherri Sharp, Administrative Assistant II**

**Prepared by:  
Records and Identification Bureau  
Uniform Crime Reporting  
333 W. Nye Lane Ste 100  
Carson City, Nevada 89706  
(775) 684-6262**



# Nevada UCR Definitions / Explanations

---

## Uniform Crime Reporting Program

The UCR program is a nationwide, cooperative, statistical effort by over 17,000 city, county and state law enforcement agencies that voluntarily report data on crimes brought to their attention. Law enforcement agencies active in the national program represent 95% of the total population of the United States. While the program's primary objective is to generate a reliable set of crime statistics for use in law enforcement administration, operation and management, its data has over the years become one of the country's leading social indicators.

In Nevada, 39 agencies are currently reporting UCR data to the statewide program representing nearly 99% of its population. Rather than submitting directly to the FBI, local agencies must submit crime data to the state UCR Repository, which compiles, analyzes and submits copies of the reports to the FBI. The Nevada UCR Program prides itself on its responsiveness to local contributing agencies that previously received limited feedback for their efforts. The Nevada program is also responsible for producing and distributing periodic reports of the information contained in its database. As its database has grown, the program's utility has become even more apparent.

Eight offenses serve as an index for gauging fluctuations in overall volumes and rates of crime. Known collectively as the " Crime Index, " these offenses include *the violent crimes of murder, rape, robbery and assault and the property crimes of burglary, larceny, motor vehicle theft and arson*. These offenses were selected as a grouped measuring device because they represent the most common crime problems. They are all serious crimes; either by their very nature or due to the volume and frequency with which they occur.

## Index Crimes Definitions

### Murder and Non-negligent Manslaughter

Murder and non negligent manslaughter, as defined in the Uniform Crime Reporting Program, is the willful (non-negligent) killing of a human being by another.

The classification of this offense, as for all other Crime Index offenses, is based solely on police investigation as opposed to the determination of a court, medical examiner, coroner, jury or other judicial entity. Not included in the count for this offense classification are deaths caused by negligence, suicide or accident, justifiable homicides and attempts to murder or assaults to murder. These are scored as aggravated assaults.

# Nevada UCR Definitions / Explanations

---

## **Forcible Rape**

Forcible rape, as defined in the program, is the carnal knowledge of a female forcibly and against her will. Assaults or attempts to commit rape by force or threat of force are also included; however, statutory rape (without force) and other sex offenses are excluded.

## **Robbery**

Robbery is the taking or attempting to take anything of value from the care, custody or control of a person or persons by force or threat of force or violence and/or by putting the victim in fear.

## **Aggravated Assault**

Aggravated assault is an unlawful attack by one person upon another for the purpose of inflicting severe or aggravated bodily injury. This type of assault is usually accompanied by the use of a weapon or by means likely to produce death or great bodily harm. Attempts are included since it is not necessary that an injury result when a gun, knife or other weapon is used which could and probably would result in serious personal injury if the crime were successfully completed

## **Burglary**

The Uniform Crime Reporting Program defines burglary as the unlawful entry of a structure to commit a felony or theft. The use of force to gain entry is not required to classify an offense as burglary. Burglary in this program is categorized into three sub classifications: forcible entry, unlawful entry where no force is used and attempted forcible entry.

## **Larceny-Theft**

Larceny-theft is the unlawful taking, carrying, leading, or riding away of property from the possession or constructive possession of another. It includes crimes such as shoplifting, pocket picking, purse-snatching, thefts from motor vehicles, thefts of motor vehicle parts and accessories, and bicycle thefts, etc., in which no use of force, violence, or fraud occurs. In the UCR Program, this crime category does not include embezzlement, "con" games, forgery, and worthless checks. Motor vehicle theft is also excluded from this category inasmuch as it is a separate Crime Index offense.

## **Motor Vehicle Theft**

Defined as the theft or attempted theft of a motor vehicle, this offense category includes the stealing of automobiles, trucks, buses, motorcycles, motor scooters, snowmobiles, etc. The definition excludes the taking of a motor vehicle for temporary use by those persons having lawful access.

# Nevada UCR

## Definitions / Explanations

---

### Arson

Arson is defined by the Uniform Crime Reporting Program as any willful or malicious burning or attempt to burn, with or without intent to defraud, a dwelling house, public building, a motor vehicle or aircraft, personal property of another, etc. Only fires determined through investigation to have been willfully or maliciously set are classified as arsons. Fires of suspicious or unknown origins are excluded.

### Population Estimates

State, county and incorporated city population estimates are prepared and reviewed prior to the end of each calendar year for certification by the governor by March 1. The Nevada Department of Taxation and Nevada State Demographer, Bureau of Business and Economic Research, College of Business Administration, University of Nevada, Reno, prepares these estimates.

### Crime Rates

Crime rates involve the number of Index Crimes per unit of population, usually per 100,000 persons. Because Nevada has such a low population, a rate per 1,000 persons is used to reflect a more realistic volume. No attempt is made to incorporate transient populations or other factors that contribute to the ratio and types of crime in given areas. Any effort to make comparisons of crime rates between areas should be tempered by these population and environmental variables.

Crime rates are one of the most meaningful statistical elements. Computation of crime rates per 1,000 population is achieved by dividing the community's population by 1,000, then dividing the number of offenses in each class by that number. The answer is the number of offenses per 1,000 population and is the crime rate for that particular offense. In Table 2, the County Total Crime Rate is computed after subtracting the population figure for all non-reporting agencies for the current month.

The index offense "Aggravated Assault" is an item of special interest to users of Nevada's UCR report. In Tables 1 & 3, where Nevada and National crime rates are compared, "simple assaults" are subtracted from the total of all assaults following FBI UCR rules, thus allowing for direct comparison. However, total assaults (simple and aggravated) are also presented in the Nevada report. This is because the Nevada UCR staff believes this figure is an important indicator of risk for citizens and it presents a more balanced picture of this portion of the crime index to law enforcement personnel.

The Federal Bureau of Investigation, Uniform Crime Reporting Section, publishes national rates.

### Clearance Rates

The percentage of crimes cleared is obtained by dividing the number of offenses cleared by the number of offenses known. This number is then multiplied by 100.

## Nevada--Statewide Summary--UCR Index Crimes

### October 2007

Offense	Crimes this Month	# Cleared this Month	% Cleared this Month	Crimes this YTD	# Cleared this YTD	% Cleared this YTD	September Crimes 2006	September Cleared 2006	% September Cleared 2006	2007 NV Rate / 1,000 (Proj) *	2006 NV Rate / 1,000	2006 Natl. Rate / 1,000
Murder	11	7	64	164	119	73	32	13	41	0.07	0.08	0.06
Rape	110	16	15	917	196	21	89	24	27	0.37	0.36	0.32
Robbery	591	137	23	5,707	1,291	23	605	104	17	2.34	2.25	1.41
Assault *	819	385	47	9,442	4,317	46	905	387	43	3.94	4.04	2.91
Burglary	2,234	185	8	20,713	1,862	9	2,125	252	12	8.45	9.85	7.27
Larceny	4,075	780	19	41,925	8,004	19	4,211	843	20	17.31	19.95	22.86
MV Theft	1,937	151	8	19,242	1,874	10	2,168	175	8	7.92	9.04	4.17
Arson	44	1	2	538	80	15	61	9	15	0.23	0.32	0.27
<b>Total</b>	<b>9,821</b>	<b>1,662</b>	<b>17</b>	<b>98,648</b>	<b>17,743</b>	<b>18</b>	<b>10,196</b>	<b>1,807</b>	<b>18</b>	<b>40.63</b>	<b>45.90</b>	<b>39.27</b>

\* The projected Crime Rate for Assaults is computed after subtracting Simple Assaults from the total for all Assaults following FBI guidelines. Therefore, this rate may be compared directly to the National Rate. See Table 3 and the "Footnotes/Exceptions page for further information.

## Nevada UCR - - Monthly Crime/ Clearance Summary - - All Crimes

Contributing Agency	Est. Pop	Murder		Rape		Robbery		Assault		Burglary		Larceny		MV Theft		Arson		Total Crimes	Crime Rate	Clearances	Clearance Rate
<b>October 2007</b>																					
<b>Carson County</b>																					
Carson SO	57,701	0	0	1	1	2	0	63	35	22	3	53	15	12	3	0	0	153	2.65	57	37.3%
County Total	57,701	0	0	1	1	2	0	63	35	22	3	53	15	12	3	0	0	153	2.65	57	37.3%
<b>Churchill County</b>																					
Churchill SO	19,072	0	0	0	0	0	0	18	17	5	2	10	5	2	1	0	0	35	1.84	25	71.4%
Fallon PD	8,299	0	0	1	1	1	0	11	10	5	2	34	8	1	1	0	0	53	6.39	22	41.5%
County Total	27,371	0	0	1	1	1	0	29	27	10	4	44	13	3	2	0	0	88	3.22	47	53.4%
<b>Clark County</b>																					
Boulder PD	15,478	0	0	0	0	0	0	2	1	8	0	6	0	0	0	0	0	16	1.03	1	6.3%
Clark Co. Sci	313,606	0	0	0	0	0	0	0	0	0	0	0	0	0	0	0	0	0	0.00	0	0.0%
Henderson	251,321	1	0	5	1	27	8	260	181	140	26	271	67	161	5	10	0	875	3.48	288	32.9%
LV Metro PD	1,391,866	8	4	77	7	432	79	2,628	1,106	1,470	78	2,223	346	1,386	110	22	0	8,246	5.92	1,730	21.0%
LV Fire Dept*																4	0	4	N/A	0	0.0%
Mesquite	17,656	0	0	0	0	0	0	20	18	4	0	29	10	3	0	0	0	56	3.17	28	50.0%
North Las Ve	198,516	0	0	7	1	63	18	277	161	206	17	300	97	213	8	0	0	1,066	5.37	302	28.3%
Taxicab Authority		0	0	0	0	2	2	7	3	0	0	8	2	0	0	0	0	17	0.00	7	41.2%
UNLV PD*	30,223	0	0	0	0	0	0	4	2	13	3	35	1	10	0	0	0	62	2.05	6	9.7%
County Total	1,874,837	9	4	89	9	524	107	3,198	1,472	1,841	124	2,872	523	1,773	123	36	0	10,342	5.52	2,362	22.8%
<b>Douglas County</b>																					
Douglas SO	51,770	0	0	2	0	3	1	54	19	15	0	42	5	7	0	1	0	124	2.40	25	20.2%
County Total	51,770	0	0	2	0	3	1	54	19	15	0	42	5	7	0	1	0	124	2.40	25	20.2%

\*Population figure not included in county total  
Table 2

5  
Assault data includes ALL assaults (aggravated and simple).

## Nevada UCR - - Monthly Crime/ Clearance Summary - - All Crimes

Contributing Agency	Est. Pop	Murder		Rape		Robbery		Assault		Burglary		Larceny		MV Theft		Arson		Total Crimes	Crime Rate	Clearances	Clearance Rate
<b>Elko County</b>																		<b>October 2007</b>			
Elko SO	23,004	0	0	0	0	0	0	0	0	0	0	0	0	0	0	0	0	0	0.00	0	0.0%
Carlin PD	2,281	0	0	0	0	0	0	0	0	0	0	0	0	0	0	0	0	0	0.00	0	0.0%
Elko PD	18,183	0	0	2	0	0	0	33	10	5	2	27	0	8	2	0	0	75	4.12	14	18.7%
WestWendov	4,871	1	1	0	0	0	0	8	8	1	0	6	1	0	0	0	0	16	3.28	10	62.5%
<b>County Total</b>	<b>48,339</b>	<b>1</b>	<b>1</b>	<b>2</b>	<b>0</b>	<b>0</b>	<b>0</b>	<b>41</b>	<b>18</b>	<b>6</b>	<b>2</b>	<b>33</b>	<b>1</b>	<b>8</b>	<b>2</b>	<b>0</b>	<b>0</b>	<b>91</b>	<b>1.88</b>	<b>24</b>	<b>26.4%</b>
<b>Esmeralda County</b>																					
Esmeralda S	1,262	0	0	0	0	0	0	0	0	0	0	0	0	0	0	0	0	0	0.00	0	0.0%
<b>County Total</b>	<b>1,262</b>	<b>0</b>	<b>0</b>	<b>0</b>	<b>0</b>	<b>0</b>	<b>0</b>	<b>0</b>	<b>0</b>	<b>0</b>	<b>0</b>	<b>0</b>	<b>0</b>	<b>0</b>	<b>0</b>	<b>0</b>	<b>0</b>	<b>0</b>	<b>0.00</b>	<b>0</b>	<b>0.0%</b>
<b>Eureka County</b>																					
Eureka SO	1,460	0	0	0	0	0	0	3	2	1	0	0	0	0	0	0	0	4	2.74	2	50.0%
<b>County Total</b>	<b>1,460</b>	<b>0</b>	<b>0</b>	<b>0</b>	<b>0</b>	<b>0</b>	<b>0</b>	<b>3</b>	<b>2</b>	<b>1</b>	<b>0</b>	<b>0</b>	<b>0</b>	<b>0</b>	<b>0</b>	<b>0</b>	<b>0</b>	<b>4</b>	<b>2.74</b>	<b>2</b>	<b>50.0%</b>
<b>Humboldt County</b>																					
Humboldt SO	10,108	0	0	0	0	0	0	0	0	0	0	0	0	0	0	0	0	0	0.00	0	0.0%
Winnemucca	7,643	0	0	0	0	0	0	10	6	0	0	2	0	1	0	0	0	13	1.70	6	
<b>County Total</b>	<b>17,751</b>	<b>0</b>	<b>0</b>	<b>0</b>	<b>0</b>	<b>0</b>	<b>0</b>	<b>10</b>	<b>6</b>	<b>0</b>	<b>0</b>	<b>2</b>	<b>0</b>	<b>1</b>	<b>0</b>	<b>0</b>	<b>0</b>	<b>13</b>	<b>0.73</b>	<b>6</b>	<b>46.2%</b>

\*Population figure not included in county total  
Table 2

## Nevada UCR - - Monthly Crime/ Clearance Summary - - All Crimes

Contributing Agency	Est. Pop	Murder		Rape		Robbery		Assault		Burglary		Larceny		MV Theft		Arson		Total Crimes	Crime Rate	Clearances	Clearance Rate
<b>October 2007</b>																					
<b>Lander County</b>																					
Lander SO	5,655	0	0	0	0	0	0	10	8	3	1	1	1	0	0	0	0	14	2.48	10	71.4%
County Total	5,655	0	0	0	0	0	0	10	8	3	1	1	1	0	0	0	0	14	2.48	10	71.4%
<b>Lincoln County</b>																					
Lincoln SO	3,987	0	0	0	0	0	0	1	0	0	0	2	0	4	0	0	0	7	1.76	0	0.0%
County Total	3,987	0	0	0	0	0	0	1	0	0	0	2	0	4	0	0	0	7	1.76	0	0.0%
<b>Lyon County</b>																					
Lyon SO	50,774	0	0	1	1	1	0	42	21	13	3	34	5	4	2	0	0	95	1.87	32	33.7%
Yerington PD	3,257	0	0	0	0	0	0	2	3	2	2	2	2	0	0	0	0	6	1.84	7	116.7%
County Total	54,031	0	0	1	1	1	0	44	24	15	5	36	7	4	2	0	0	101	1.87	39	38.6%
<b>Mineral County</b>																					
Mineral SO	4,399	0	0	1	1	0	0	0	0	6	1	2	2	0	0	0	0	9	2.05	4	44.4%
County Total	4,399	0	0	1	1	0	0	0	0	6	1	2	2	0	0	0	0	9	2.05	4	44.4%
<b>Nye County</b>																					
Nye SO	44,795	0	0	1	1	2	2	58	57	22	4	49	19	12	3	1	0	145	3.24	86	59.3%
County Total	44,795	0	0	1	1	2	2	58	57	22	4	49	19	12	3	1	0	145	3.24	86	59.3%

\*Population figure not included in county total  
Table 2

7  
Assault data includes ALL assaults (aggravated and simple).

## Nevada UCR - - Monthly Crime/ Clearance Summary - - All Crimes

Contributing Agency	Est. Pop	Murder		Rape		Robbery		Assault		Burglary		Larceny		MV Theft		Arson		Total Crimes	Crime Rate	Clearances	Clearance Rate
<b>Pershing County</b>																		<b>October 2007</b>			
Pershing SO	4,528	0	0	0	0	0	0	5	2	3	3	1	1	0	0	0	0	9	1.99	6	66.7%
Lovelock PD	2,427	0	0	0	0	0	0	0	0	0	0	0	0	0	0	0	0	0	0.00	0	0.0%
<b>County Total</b>	<b>6,955</b>	<b>0</b>	<b>0</b>	<b>0</b>	<b>0</b>	<b>0</b>	<b>0</b>	<b>5</b>	<b>2</b>	<b>3</b>	<b>3</b>	<b>1</b>	<b>1</b>	<b>0</b>	<b>0</b>	<b>0</b>	<b>0</b>	<b>9</b>	<b>1.29</b>	<b>6</b>	<b>66.7%</b>
<b>Storey County</b>																					
Storey	4,110	0	0	0	0	0	0	0	0	0	0	0	0	0	0	0	0	0	0.00	0	0.0%
<b>County Total</b>	<b>4,110</b>	<b>0</b>	<b>0</b>	<b>0</b>	<b>0</b>	<b>0</b>	<b>0</b>	<b>0</b>	<b>0</b>	<b>0</b>	<b>0</b>	<b>0</b>	<b>0</b>	<b>0</b>	<b>0</b>	<b>0</b>	<b>0</b>	<b>0</b>	<b>0.00</b>	<b>0</b>	<b>0.0%</b>
<b>Washoe County</b>																					
Washoe SO	106,868	0	0	0	0	1	1	56	33	58	9	93	13	19	0	0	0	227	2.12	56	24.7%
Reno PD	214,371	1	2	7	0	47	18	375	165	159	12	627	122	67	13	2	0	1,285	5.99	332	25.8%
Sparks PD	87,846	0	0	5	2	10	8	114	63	64	17	193	55	25	3	1	0	412	4.69	148	35.9%
UNR PD*	16,671	0	0	0	0	0	0	1	1	3	0	16	0	1	0	0	0	21	1.26	1	4.8%
Washoe Co S	68,366	0	0	0	0	0	0	1	1	0	0	5	3	0	0	2	0	8	0.12	4	50.0%
TMCC PD*	14,161	0	0	0	0	0	0	0	0	4	0	0	0	0	0	0	0	4	0.28	0	0.0%
<b>County Total</b>	<b>409,085</b>	<b>1</b>	<b>2</b>	<b>12</b>	<b>2</b>	<b>58</b>	<b>27</b>	<b>547</b>	<b>263</b>	<b>288</b>	<b>38</b>	<b>934</b>	<b>193</b>	<b>112</b>	<b>16</b>	<b>5</b>	<b>0</b>	<b>1,957</b>	<b>4.78</b>	<b>541</b>	<b>27.6%</b>
<b>White Pine County</b>																					
White Pine S	9,542	0	0	0	0	0	0	1	1	2	0	4	0	1	0	1	1	9	0.94	2	22.2%
<b>County Total</b>	<b>9,542</b>	<b>0</b>	<b>0</b>	<b>0</b>	<b>0</b>	<b>0</b>	<b>0</b>	<b>1</b>	<b>1</b>	<b>2</b>	<b>0</b>	<b>4</b>	<b>0</b>	<b>1</b>	<b>0</b>	<b>1</b>	<b>1</b>	<b>9</b>	<b>0.94</b>	<b>2</b>	<b>22.2%</b>
<b>Grand T</b>	<b>2,623,050</b>	<b>11</b>	<b>7</b>	<b>110</b>	<b>16</b>	<b>591</b>	<b>137</b>	<b>4,064</b>	<b>1,934</b>	<b>2,234</b>	<b>185</b>	<b>4,075</b>	<b>780</b>	<b>1,937</b>	<b>151</b>	<b>44</b>	<b>1</b>	<b>13,066</b>	<b>4.98</b>	<b>3,211</b>	<b>24.6%</b>

\*Population figure not included in county total  
Table 2

8  
Assault data includes ALL assaults (aggravated and simple).

# Nevada UCR - - Monthly Crimes/Clearances Summary - - Index Crimes

October 2007

Est. Pop	Murder		Rape		Robbery		Assault		Burglary		Larceny		MV Theft		Arson		Total Crimes	Crime Rate	Total Clear	Clearance Rate	
<b>Statewide Totals</b>																					
<b>(Crimes/Clearances)</b>	2,623,050	11	7	110	16	591	137	819	385	2234	185	4075	780	1937	151	44	1	9821	3.74	1662	16.92

## Nevada (Projected 2007) vs National (2006) Index Crime Rates

(per 1,000 population)

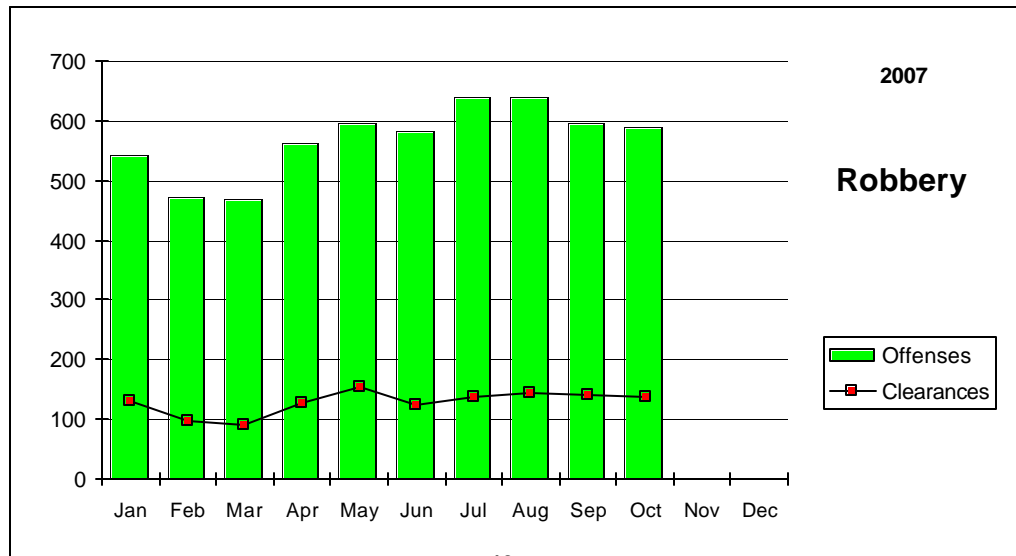
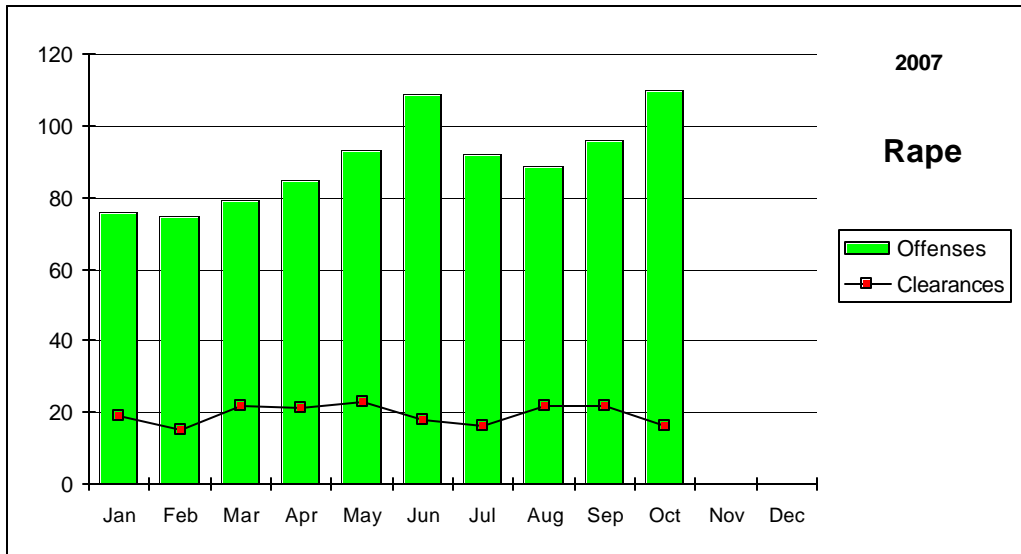
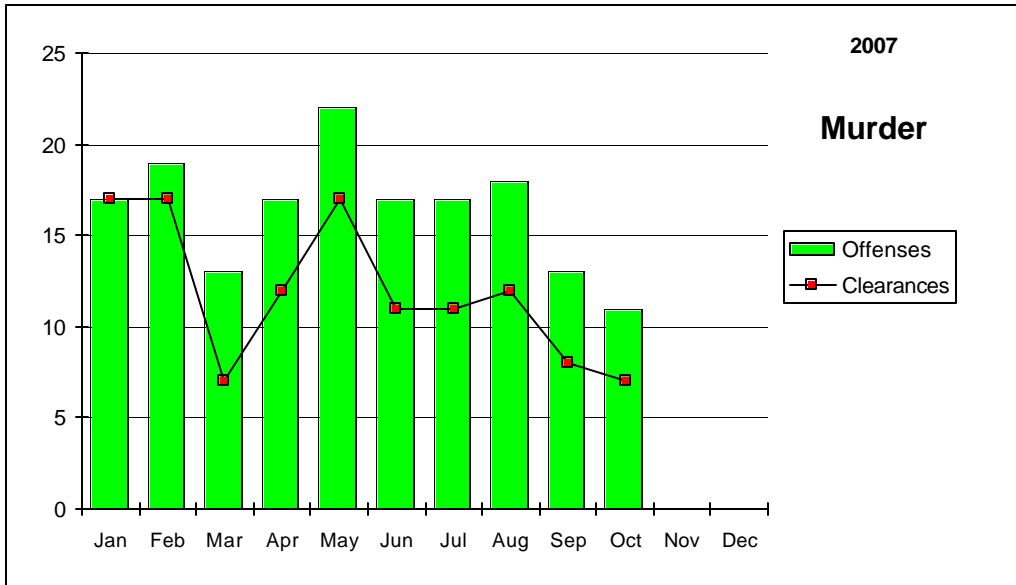
	Murder	Rape	Robbery	Assault	Burglary	Larceny	MV Theft	Arson	Crime Rate
<b>Nevada</b>	0.08	0.42	2.61	4.32	9.48	19.18	8.80	0.25	45.13
<b>National</b>	0.06	0.31	1.49	2.88	7.29	22.07	3.98	0.27	38.27

## Nevada (Projected 2007) vs National (2006) Crime Clearance Rates

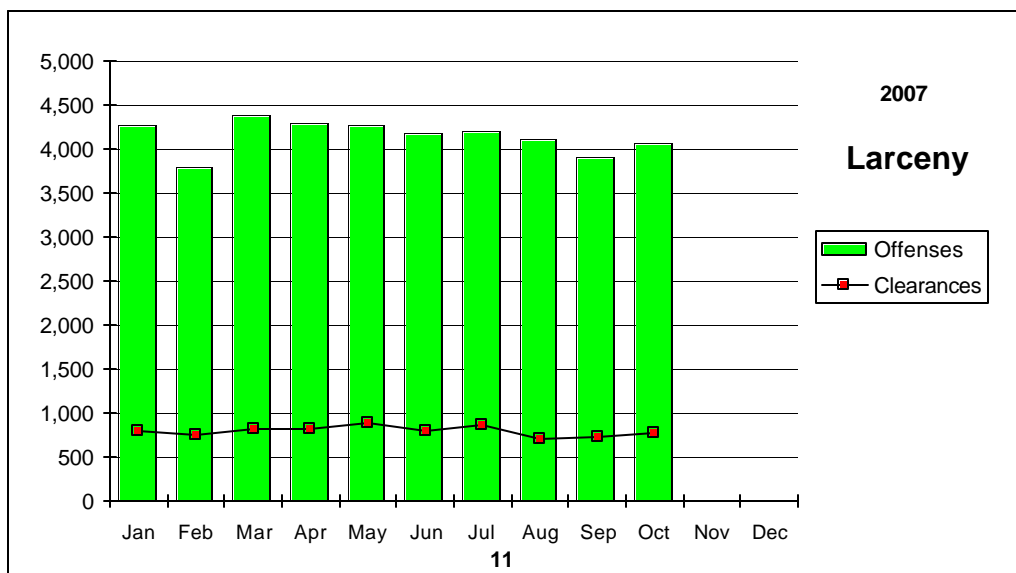
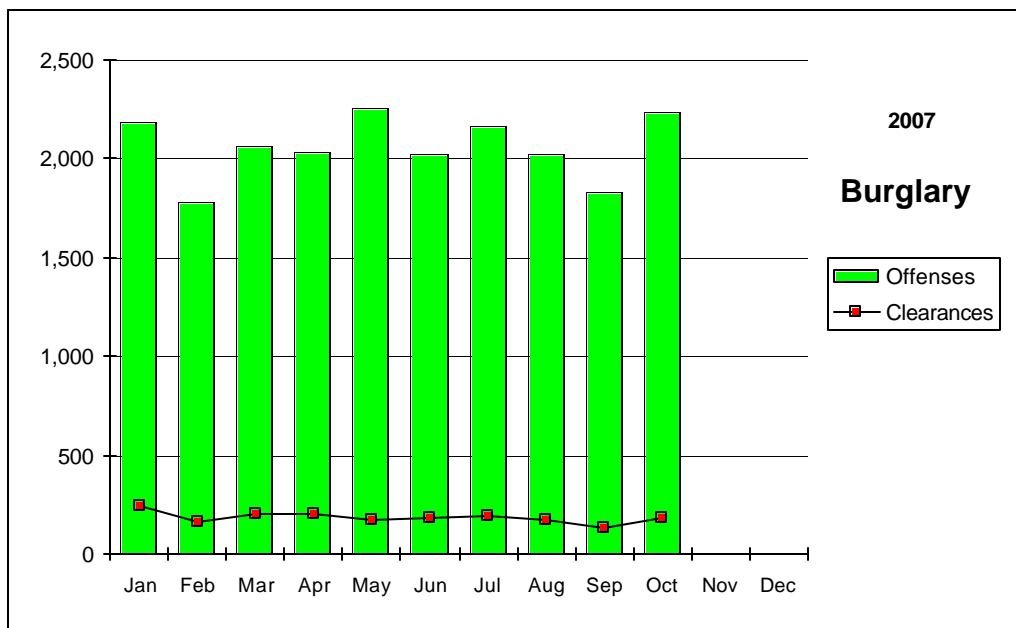
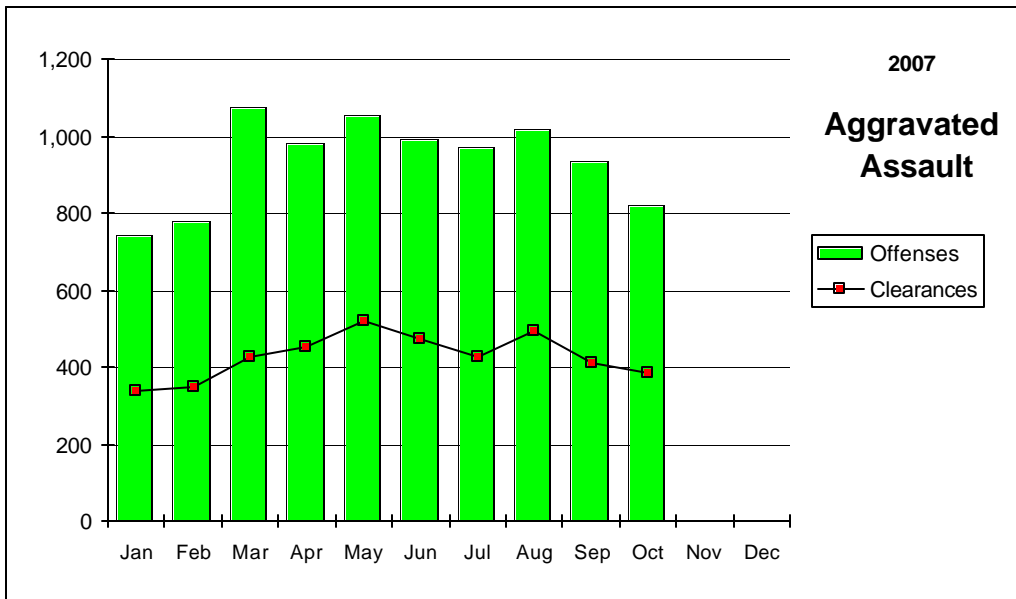
(by Percent)

	Murder	Rape	Robbery	Assault	Burglary	Larceny	MV Theft	Arson	Clear Rate
<b>Nevada</b>	72.6	21.4	22.6	45.7	9.0	19.1	9.7	14.9	14.9
<b>National</b>	60.7	40.9	25.2	54.0	12.6	17.4	12.6	18.0	19.3

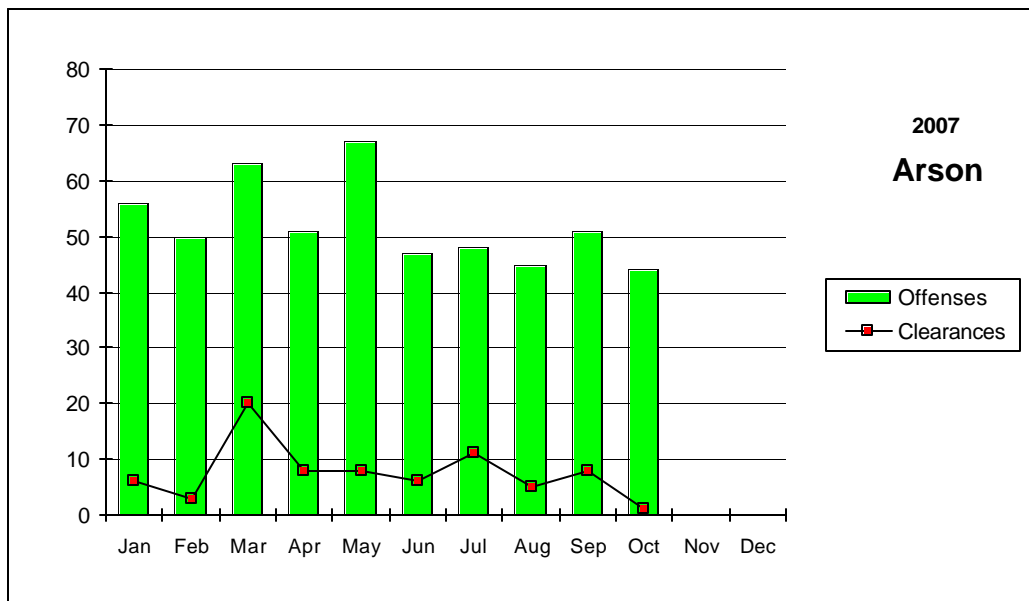
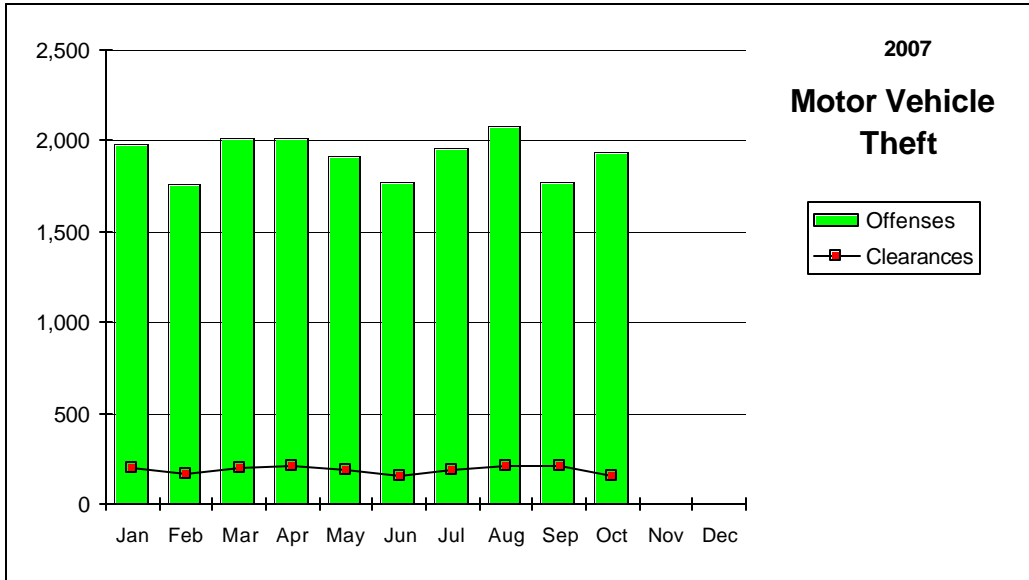
# Nevada--Graphic Summary--UCR



# Nevada--Graphic Summary--UCR



# Nevada--Graphic Summary--UCR



## Nevada--Murder--Incidence Level Variation--UCR

### October 2007

Agency	October 2007 Offenses	October 2007 Cleared	2007 YTD Offenses	2007 YTD Cleared	October 2006 Offenses	October 2006 Cleared	2006 YTD Offenses	2006 YTD Cleared
Boulder	0	0	1	1	0	0	1	0
Carlin PD	0	0	0	0	0	0	0	0
Carson SO	0	0	1	2	1	0	3	1
Churchill SO	0	0	1	1	0	0	0	0
Clark Co Schl PD	0	0	0	0	0	0	0	0
Douglas SO	0	0	0	1	0	0	1	0
Elko PD	0	0	0	0	0	0	0	0
Elko SO	0	0	3	3	1	0	1	0
Esmeralda SO	0	0	0	0	0	0	0	0
Eureka SO	0	0	0	0	0	0	0	0
Fallon PD	0	0	0	0	0	0	0	0
Henderson PD	1	0	9	7	0	0	5	1
Humboldt SO	0	0	1	1	0	0	0	0
Lander SO	0	0	1	1	0	0	0	0
Lincoln SO	0	0	0	0	0	0	0	0
Lovelock PD	0	0	0	0	0	0	0	0
LV Fire Dept	0	0	0	0	0	0	0	0
LV Metro	8	4	101	74	16	10	129	90
Lyon SO	0	0	2	2	0	0	1	1
Mesquite PD	0	0	0	0	0	0	1	1
Mineral SO	0	0	0	0	0	0	0	0
NLVPD	0	0	20	6	1	1	17	8
Nye SO	0	0	2	2	0	0	2	3
Pershing SO	0	0	0	0	0	0	1	1
Reno PD	1	2	14	11	13	2	20	9
Sparks PD	0	0	4	4	0	0	3	4
Storey SO	0	0	0	0	0	0	0	0
Taxicab Authority	0	0	0	0	0	0	0	0
TMCC PD	0	0	0	0	0	0	0	0
UNLV PD	0	0	0	0	0	0	0	0
UNR PD	0	0	0	0	0	0	0	0
Washoe SO	0	0	2	1	0	0	4	0
Washoe Co Schl PD	0	0	0	0	0	0	0	0
Wendover PD	1	1	2	2	0	0	1	1
White Pine SO	0	0	0	0	0	0	0	0
Winnemucca PD	0	0	0	0	0	0	1	1
Yerington PD	0	0	0	0	0	0	0	0
<b>TOTALS</b>	<b>11</b>	<b>7</b>	<b>164</b>	<b>119</b>	<b>32</b>	<b>13</b>	<b>191</b>	<b>121</b>

## Nevada--Rape--Incidence Level Variation-UCR

### October 2007

Agency	October 2007 Offenses	October 2007 Cleared	2007 YTD Offenses	2007 YTD Cleared	October 2006 Offenses	October 2006 Cleared	2006 YTD Offenses	2006 YTD Cleared
Boulder	0	0	0	0	0	0	2	1
Carlin PD	0	0	2	0	0	0	0	0
Carson SO	1	1	5	2	0	0	2	0
Churchill SO	0	0	7	4	1	1	9	15
Clark Co Schl PD	0	0	4	0	1	0	3	0
Douglas SO	2	0	4	3	3	2	20	14
Elko PD	2	0	11	2	1	0	7	2
Elko SO	0	0	5	1	1	1	5	1
Esmeralda SO	0	0	0	0	0	0	0	0
Eureka SO	0	0	0	0	0	0	1	0
Fallon PD	1	1	3	1	0	0	0	0
Henderson PD	5	1	54	19	0	5	59	34
Humboldt SO	0	0	0	0	0	0	0	0
Lander SO	0	0	18	13	1	0	9	8
Lincoln SO	0	0	0	0	0	0	0	0
Lovelock PD	0	0	1	0	0	0	0	2
LV Fire Dept	0	0	0	0	0	0	0	0
LV Metro	77	7	609	84	60	8	602	100
Lyon SO	1	1	3	1	0	0	4	2
Mesquite PD	0	0	1	2	0	0	1	1
Mineral SO	1	1	6	5	0	0	1	1
NLVPD	7	1	45	9	4	1	45	18
Nye SO	1	1	16	15	2	1	9	7
Pershing SO	0	0	9	5	2	0	7	0
Reno PD	7	0	75	13	9	3	84	16
Sparks PD	5	2	30	11	3	1	36	12
Storey SO	0	0	3	1	0	0	0	0
Taxicab Authority	0	0	0	0	0	0	0	0
TMCC PD	0	0	0	0	0	0	0	0
UNLV PD	0	0	1	1	0	0	0	0
UNR PD	0	0	1	0	0	0	1	0
Washoe SO	0	0	0	0	0	0	0	0
Washoe Co Schl PD	0	0	0	0	0	0	0	0
Wendover PD	0	0	0	0	0	0	2	1
White Pine SO	0	0	1	1	1	1	4	2
Winnemucca PD	0	0	3	3	0	0	2	1
Yerington PD	0	0	0	0	0	0	0	0
<b>TOTALS</b>	<b>110</b>	<b>16</b>	<b>917</b>	<b>196</b>	<b>89</b>	<b>24</b>	<b>915</b>	<b>238</b>

## Nevada--Robbery--Incidence Level Variation--UCR

### October 2007

Agency	October 2007 Offenses	October 2007 Cleared	2007 YTD Offenses	2007 YTD Cleared	October 2006 Offenses	October 2006 Cleared	2006 YTD Offenses	2006 YTD Cleared
Boulder	0	0	2	1	0	0	3	1
Carlin PD	0	0	0	0	0	0	0	0
Carson SO	2	0	20	12	1	0	18	11
Churchill SO	0	0	2	2	0	0	0	0
Clark Co Schl PD	0	0	31	22	4	3	40	16
Douglas SO	3	1	4	1	0	0	1	0
Elko PD	0	0	6	2	0	0	7	2
Elko SO	0	0	1	1	0	0	0	0
Esmeralda SO	0	0	0	0	0	0	0	0
Eureka SO	0	0	1	0	0	0	0	0
Fallon PD	1	0	2	0	0	0	3	1
Henderson PD	27	8	187	58	20	0	192	32
Humboldt SO	0	0	1	1	0	0	1	1
Lander SO	0	0	1	0	1	0	2	0
Lincoln SO	0	0	0	0	0	0	0	0
Lovelock PD	0	0	0	0	0	0	0	0
LV Fire Dept	0	0	0	0	0	0	0	0
LV Metro	432	79	4,329	885	466	75	4,427	714
Lyon SO	1	0	8	0	1	0	5	2
Mesquite PD	0	0	2	0	0	0	2	1
Mineral SO	0	0	0	0	0	0	0	0
NLVPD	63	18	522	102	59	10	479	74
Nye SO	2	2	17	9	2	0	10	5
Pershing SO	0	0	0	0	0	0	0	0
Reno PD	47	18	425	134	34	13	445	123
Sparks PD	10	8	110	53	10	3	99	33
Storey SO	0	0	0	0	0	0	0	0
Taxicab Authority	2	2	16	3	1	0	40	40
TMCC PD	0	0	0	0	0	0	0	0
UNLV PD	0	0	0	0	1	0	1	0
UNR PD	0	0	3	0	0	0	0	0
Washoe SO	1	1	11	3	5	0	20	5
Washoe Co Schl PD	0	0	0	0	0	0	2	2
Wendover PD	0	0	2	1	0	0	2	1
White Pine SO	0	0	1	0	0	0	1	1
Winnemucca PD	0	0	3	1	0	0	3	2
Yerington PD	0	0	0	0	0	0	0	0
<b>TOTALS</b>	<b>591</b>	<b>137</b>	<b>5,707</b>	<b>1,291</b>	<b>605</b>	<b>104</b>	<b>5,803</b>	<b>1,067</b>

# Nevada--Aggravated Assault--Incidence Level Variation--UCR

## October 2007

Agency	October 2007 Offenses	October 2007 Cleared	2007 YTD Offenses	2007 YTD Cleared	October 2006 Offenses	October 2006 Cleared	2006 YTD Offenses	2006 YTD Cleared
Boulder	0	0	12	6	1	1	9	7
Carlin PD	0	0	17	16	5	2	27	22
Carson SO	10	5	149	94	19	8	142	90
Churchill SO	2	1	29	20	4	5	37	35
Clark Co Schl PD	0	0	57	28	5	1	44	20
Douglas SO	3	1	49	23	3	1	49	26
Elko PD	1	0	23	10	2	2	28	13
Elko SO	0	0	5	1	1	1	12	11
Esmeralda SO	0	0	1	1	0	0	3	3
Eureka SO	2	1	6	5	0	0	5	4
Fallon PD	0	0	17	14	3	4	12	11
Henderson PD	28	21	253	152	27	13	243	143
Humboldt SO	0	0	48	47	2	1	42	40
Lander SO	2	2	14	10	6	4	18	16
Lincoln SO	0	0	1	1	0	0	3	3
Lovelock PD	0	0	4	3	0	0	7	5
LV Fire Dept	0	0	0	0	0	0	0	0
LV Metro	594	249	6,520	2,675	606	220	5,735	1,883
Lyon SO	1	0	49	36	5	2	62	41
Mesquite PD	1	1	13	13	3	3	20	16
Mineral SO	0	0	8	8	0	0	6	6
NLVPD	71	50	906	432	73	45	824	383
Nye SO	9	9	64	56	10	10	91	79
Pershing SO	3	1	26	15	4	2	53	35
Reno PD	67	27	720	368	73	37	710	347
Sparks PD	6	6	159	105	13	9	187	129
Storey SO	0	0	12	6	0	0	0	0
Taxicab Authority	7	3	68	47	12	1	86	20
TMCC PD	0	0	0	0	0	0	0	0
UNLV PD	2	1	6	4	1	1	3	1
UNR PD	0	0	2	0	0	0	5	3
Washoe SO	7	4	170	92	19	6	144	80
Washoe Co Schl PD	0	0	6	5	3	3	10	10
Wendover PD	1	1	4	3	1	1	8	7
White Pine SO	0	0	7	6	3	3	22	20
Winnemucca PD	2	2	17	15	1	1	10	9
Yerington PD	0	0	0	0	0	0	0	0
<b>TOTALS</b>	<b>819</b>	<b>385</b>	<b>9,442</b>	<b>4,317</b>	<b>905</b>	<b>387</b>	<b>8,657</b>	<b>3,518</b>

**Nevada--All Assaults--Incidence Level Variation--UCR**

**October 2007**

Agency	October 2007 Offenses	October 2007 Cleared	2007 YTD Offenses	2007 YTD Cleared	October 2006 Offenses	October 2006 Cleared	2006 YTD Offenses	2006 YTD Cleared
Boulder	2	1	25	12	2	1	27	18
Carlin PD	0	0	20	19	5	2	28	22
Carson SO	63	35	704	361	82	41	710	358
Churchill SO	18	17	190	146	18	13	205	182
Clark Co Schl PD	0	0	656	390	106	59	636	343
Douglas SO	54	19	617	257	45	25	530	401
Elko PD	33	10	310	142	30	14	296	178
Elko SO	0	0	72	29	5	4	93	66
Esmeralda SO	0	0	2	2	0	0	5	5
Eureka SO	3	2	12	10	0	0	8	6
Fallon PD	11	10	219	172	23	17	175	127
Henderson PD	260	181	2,542	1,754	244	152	2,376	1,479
Humboldt SO	0	0	58	57	3	1	50	47
Lander SO	10	8	90	76	12	8	96	80
Lincoln SO	1	0	20	17	0	1	18	27
Lovelock PD	0	0	28	22	2	1	51	49
LV Fire Dept	0	0	0	0	0	0	0	0
LV Metro	2,628	1,106	25,434	10,721	2,448	1,047	22,987	7,752
Lyon SO	42	21	481	273	53	14	483	254
Mesquite PD	20	18	205	153	24	22	193	172
Mineral SO	0	0	44	41	2	2	53	53
NLVPD	277	161	3,191	1,695	285	169	2,914	1,551
Nye SO	58	57	549	517	60	60	586	567
Pershing SO	5	2	33	19	5	2	60	38
Reno PD	375	165	4,303	2,257	422	226	4,130	2,162
Sparks PD	114	63	1,241	893	98	79	1,179	779
Storey SO	0	0	32	20	6	3	37	22
Taxicab Authority	7	3	72	47	12	1	89	20
TMCC PD	0	0	3	3	1	0	3	1
UNLV PD	4	2	32	21	4	2	30	15
UNR PD	1	1	20	10	0	0	5	3
Washoe SO	56	33	865	541	90	50	843	468
Washoe Co Schl PD	1	1	8	7	9	8	74	73
Wendover PD	8	8	71	63	4	3	76	77
White Pine SO	1	1	41	29	5	5	80	72
Winnemucca PD	10	6	100	87	14	12	69	60
Yerington PD	2	3	35	38	1	3	28	29
<b>TOTALS</b>	<b>4,064</b>	<b>1,934</b>	<b>42,325</b>	<b>20,901</b>	<b>4,120</b>	<b>2,047</b>	<b>39,223</b>	<b>17,556</b>

## Nevada--Burglary--Incidence Level Variation--UCR

### October 2007

Agency	October 2007 Offenses	October 2007 Cleared	2007 YTD Offenses	2007 YTD Cleared	October 2006 Offenses	October 2006 Cleared	2006 YTD Offenses	2006 YTD Cleared
Boulder	8	0	70	5	9	1	87	9
Carlin PD	0	0	8	1	1	0	18	3
Carson SO	22	3	245	48	13	13	240	65
Churchill SO	5	2	104	33	8	0	90	27
Clark Co Schl PD	0	0	151	26	16	2	205	32
Douglas SO	15	0	178	23	10	0	181	44
Elko PD	5	2	77	13	8	1	122	20
Elko SO	0	0	46	4	3	1	81	14
Esmeralda SO	0	0	1	1	0	0	1	1
Eureka SO	1	0	9	4	0	0	7	1
Fallon PD	5	2	40	15	8	0	46	10
Henderson PD	140	26	1,486	240	172	35	1,323	189
Humboldt SO	0	0	23	8	1	0	10	4
Lander SO	3	1	41	11	1	1	37	27
Lincoln SO	0	0	4	0	1	1	6	6
Lovelock PD	0	0	10	7	2	2	15	14
LV Fire Dept	0	0	0	0	0	0	0	0
LV Metro	1,470	78	12,720	735	1,236	118	12,433	752
Lyon SO	13	3	196	19	22	1	172	28
Mesquite PD	4	0	30	7	1	1	10	4
Mineral SO	6	1	12	3	2	0	21	6
NLVPD	206	17	1,980	128	209	13	2,075	137
Nye SO	22	4	298	39	32	6	219	36
Pershing SO	3	3	19	6	3	1	35	6
Reno PD	159	12	1,549	145	207	19	1,693	140
Sparks PD	64	17	694	206	84	25	721	196
Storey SO	0	0	17	2	1	0	14	3
Taxicab Authority	0	0	2	0	0	0	0	0
TMCC PD	4	0	15	1	0	0	3	0
UNLV PD	13	3	53	4	9	0	56	2
UNR PD	3	0	21	2	5	0	12	1
Washoe SO	58	9	448	66	46	5	464	43
Washoe Co Schl PD	0	0	6	3	2	2	23	4
Wendover PD	1	0	27	6	3	1	43	12
White Pine SO	2	0	71	7	3	0	50	7
Winnemucca PD	0	0	27	9	5	1	30	18
Yerington PD	2	2	35	35	2	2	25	22
<b>TOTALS</b>	<b>2,234</b>	<b>185</b>	<b>20,713</b>	<b>1,862</b>	<b>2,125</b>	<b>252</b>	<b>20,568</b>	<b>1,883</b>

## Nevada--Larceny--Incidence Level Variation--UCR

### October 2007

Agency	October 2007 Offenses	October 2007 Cleared	2007 YTD Offenses	2007 YTD Cleared	October 2006 Offense	October 2006 Cleared	2006 YTD Offenses	2006 YTD Cleared
Boulder	6	0	68	7	12	1	109	8
Carlin PD	0	0	5	0	0	0	9	2
Carson SO	53	15	594	123	60	15	669	152
Churchill SO	10	5	121	33	21	2	124	41
Clark Co Schl PD	0	0	728	109	118	18	723	104
Douglas SO	42	5	586	85	46	11	619	113
Elko PD	27	0	339	27	36	0	372	32
Elko SO	0	0	42	3	4	0	81	10
Esmeralda SO	0	0	2	0	1	0	5	4
Eureka SO	0	0	12	3	0	0	8	1
Fallon PD	34	8	263	54	33	6	276	46
Henderson PD	271	67	2,794	720	284	45	3,017	476
Humboldt SO	0	0	24	7	3	1	28	12
Lander SO	1	1	48	20	4	2	47	29
Lincoln SO	2	0	19	4	5	0	24	5
Lovelock PD	0	0	10	8	2	0	15	10
LV Fire Dept	0	0	0	0	0	0	0	0
LV Metro	2,223	346	22,980	4,059	2,187	473	22,170	4,242
Lyon SO	34	5	398	66	49	4	366	59
Mesquite PD	29	10	322	87	21	7	226	63
Mineral SO	2	2	11	2	1	0	15	3
NLVPD	300	97	3,007	538	322	40	2,850	427
Nye SO	49	19	421	143	34	16	378	120
Pershing SO	1	1	19	1	2	2	19	6
Reno PD	627	122	5,511	1,204	599	144	5,775	1,214
Sparks PD	193	55	2,047	495	176	34	1,718	244
Storey SO	0	0	30	2	4	0	35	3
Taxicab Authority	8	2	80	5	52	1	364	12
TMCC PD	0	0	6	0	0	0	11	0
UNLV PD	35	1	233	8	22	1	205	13
UNR PD	16	0	110	2	16	0	127	3
Washoe SO	93	13	794	100	65	8	683	62
Washoe Co Schl PD	5	3	109	33	6	2	138	41
Wendover PD	6	1	81	21	9	3	120	28
White Pine SO	4	0	40	7	8	2	96	30
Winnemucca PD	2	0	58	15	6	5	56	18
Yerington PD	2	2	13	13	3	0	11	6
<b>TOTALS</b>	<b>4,075</b>	<b>780</b>	<b>41,925</b>	<b>8,004</b>	<b>4,211</b>	<b>843</b>	<b>41,489</b>	<b>7,639</b>

## Nevada--MV Theft--Incidence Level Variation--UCR

### October 2007

Agency	October 2007 Offenses	October 2007 Cleared	2007 YTD Offenses	2007 YTD Cleared	October 2006 Offenses	October 2006 Cleared	2006 YTD Offenses	2006 YTD Cleared
Boulder	0	0	9	0	1	0	21	1
Carlin PD	0	0	0	0	0	0	5	1
Carson SO	12	3	72	21	13	4	102	32
Churchill SO	2	1	10	7	0	0	14	5
Clark Co Schl PD	0	0	41	17	3	1	42	11
Douglas SO	7	0	44	7	5	1	56	35
Elko PD	8	2	39	9	4	0	48	6
Elko SO	0	0	11	3	0	0	16	2
Esmeralda SO	0	0	0	0	0	0	1	1
Eureka SO	0	0	2	2	1	0	4	1
Fallon PD	1	1	16	4	1	0	24	8
Henderson PD	161	5	1,093	44	96	3	1,249	35
Humboldt SO	0	0	3	2	0	0	4	3
Lander SO	0	0	4	2	0	0	6	6
Lincoln SO	4	0	10	1	1	1	8	5
Lovelock PD	0	0	1	0	0	0	2	1
LV Fire Dept	0	0	0	0	0	0	0	0
LV Metro	1,386	110	14,255	1,369	1,524	119	16,667	1,518
Lyon SO	4	2	62	16	10	3	70	30
Mesquite PD	3	0	35	8	2	0	49	12
Mineral SO	0	0	4	1	0	0	4	2
NLVPD	213	8	1,890	78	269	11	2,205	91
Nye SO	12	3	132	32	8	3	148	65
Pershing SO	0	0	0	0	0	0	2	1
Reno PD	67	13	920	146	158	10	1,364	164
Sparks PD	25	3	291	50	45	7	378	67
Storey SO	0	0	5	0	0	0	2	0
Taxicab Authority	0	0	1	0	0	0	11	0
TMCC PD	0	0	0	0	0	0	0	0
UNLV PD	10	0	57	6	3	0	35	2
UNR PD	1	0	4	0	2	0	11	0
Washoe SO	19	0	210	41	18	9	184	47
Washoe Co Schl PD	0	0	0	0	0	0	0	0
Wendover PD	0	0	6	5	2	2	16	13
White Pine SO	1	0	6	2	2	1	25	11
Winnemucca PD	1	0	9	1	0	0	12	4
Yerington PD	0	0	0	0	0	0	0	0
<b>TOTALS</b>	<b>1,937</b>	<b>151</b>	<b>19,242</b>	<b>1,874</b>	<b>2,168</b>	<b>175</b>	<b>22,785</b>	<b>2,180</b>

## Nevada--Arson--Incidence Level Variation--UCR

### October 2007

Agency	October 2007 Offenses	October 2007 Cleared	2007 YTD Offenses	2007 YTD Cleared	October 2006 Offenses	October 2006 Cleared	2006 YTD Offenses	2006 YTD Cleared
Boulder	0	0	3	1	0	0	3	0
Carlin PD	0	0	1	1	0	0	0	0
Carson SO	0	0	20	11	2	1	8	4
Churchill SO	0	0	10	5	0	0	2	2
Clark Co Schl PD	0	0	44	8	1	0	68	22
Douglas SO	1	0	10	1	0	0	6	4
Elko PD	0	0	1	0	0	0	8	1
Elko SO	0	0	0	0	2	1	3	1
Esmeralda SO	0	0	2	1	0	0	0	0
Eureka SO	0	0	1	1	0	0	0	0
Fallon PD	0	0	6	1	0	0	0	0
Henderson PD	10	0	58	16	6	0	73	13
Humboldt SO	0	0	2	0	0	0	1	1
Lander SO	0	0	0	0	0	0	0	0
Lincoln SO	0	0	0	0	0	0	1	2
Lovelock PD	0	0	0	0	0	0	0	0
LV Fire Dept	4	0	56	9	8	0	67	10
LV Metro	22	0	211	0	25	0	272	34
Lyon SO	0	0	8	3	3	2	16	4
Mesquite PD	0	0	0	0	0	0	0	0
Mineral SO	0	0	0	0	0	0	1	1
NLVPD	0	0	30	5	6	2	52	8
Nye SO	1	0	18	5	2	1	29	22
Pershing SO	0	0	0	0	0	0	0	0
Reno PD	2	0	16	4	2	0	33	3
Sparks PD	1	0	19	4	1	1	18	5
Storey SO	0	0	1	0	0	0	0	0
Taxicab Authority	0	0	0	0	0	0	0	0
TMCC PD	0	0	0	0	0	0	0	0
UNLV PD	0	0	2	0	0	0	1	0
UNR PD	0	0	1	0	0	0	0	0
Washoe SO	0	0	3	0	0	0	9	1
Washoe CO Schl	2	0	12	3	2	0	17	2
Wendover PD	0	0	1	0	0	0	3	2
White Pine SO	1	1	1	1	0	0	1	0
Winnemucca PD	0	0	1	0	1	1	7	6
Yerington PD	0	0	0	0	0	0	0	0
<b>TOTALS</b>	<b>44</b>	<b>1</b>	<b>538</b>	<b>80</b>	<b>61</b>	<b>9</b>	<b>699</b>	<b>148</b>

## State of Nevada

### Hate Crimes Reports for October 2007

#	Agency	Date of Incident	UCR Offense	Location	Bias Motivation	Victim Type and Number	Offender Race and Number
1	Las Vegas Metro	10/2/2007	AGGRAVATED ASSAULT	HIGHWAY/ROAD	ANTI-OTHER RELIGION	INDIVIDUAL-01	WHITE-01
2	Las Vegas Metro	10/2/2007	DESTRUCTION/DAMAGE	RESIDENCE/HOME	ANTI-JEWISH	INDIVIDUAL-01	UNKNOWN-00
3	Las Vegas Metro	10/11/2007	SIMPLE ASSAULT	HIGHWAY/ROAD	ANTI-BLACK	INDIVIDUAL-01	WHITE-01
4	Las Vegas Metro	10/22/2007	INTIMIDATION	RESIDENCE/HOME	ANTI-JEWISH	INDIVIDUAL-01	WHITE-01

# Stolen/Recovered Property Report

## October 2007

Property Type	Boulder PD	Carlin PD	Carson SO	Churchill SO	Clark Co Schl PD	Douglas SO	Elko PD	Elko SO	Esmeralda SO
<b>Currency</b>									
Stolen	\$617	\$0	\$6,632	\$2,830	\$0	\$15,716	\$2,850	\$0	\$0
Recovered	\$0	\$0	\$0	\$0	\$0	\$500	\$0	\$0	\$0
% Recovered	0.0%	0.0%	0.0%	0.0%	0.0%	3.2%	0.0%	0.0%	0.0%
<b>Jewelry</b>									
Stolen	\$7,400	\$0	\$23,117	\$0	\$0	\$3,590	\$1,695	\$0	\$0
Recovered	\$0	\$0	\$40	\$0	\$0	\$40	\$0	\$0	\$0
% Recovered	0.0%	0.0%	0.2%	0.0%	0.0%	1.1%	0.0%	0.0%	0.0%
<b>Clothing</b>									
Stolen	\$0	\$0	\$3,553	\$0	\$0	\$248	\$245	\$0	\$0
Recovered	\$0	\$0	\$300	\$0	\$0	\$38	\$155	\$0	\$0
% Recovered	0.0%	0.0%	8.4%	0.0%	0.0%	15.3%	63.3%	0.0%	0.0%
<b>Motor Vehicle</b>									
Stolen	\$0	\$0	\$158,876	\$30,000	\$0	\$56,490	\$57,300	\$0	\$0
Recovered	\$0	\$0	\$123,600	\$17,500	\$0	\$34,500	\$43,000	\$0	\$0
% Recovered	0.0%	0.0%	77.8%	58.3%	0.0%	61.1%	75.0%	0.0%	0.0%
<b>Office Equipment</b>									
Stolen	\$0	\$0	\$6,500	\$0	\$0	\$0	\$1,515	\$0	\$0
Recovered	\$0	\$0	\$0	\$0	\$0	\$0	\$0	\$0	\$0
% Recovered	0.0%	0.0%	0.0%	0.0%	0.0%	0.0%	0.0%	0.0%	0.0%
<b>TV, VCR, Camera, Etc.</b>									
Stolen	\$1,800	\$0	\$7,724	\$0	\$0	\$4,170	\$2,899	\$0	\$0
Recovered	\$0	\$0	\$100	\$0	\$0	\$1,565	\$0	\$0	\$0
% Recovered	0.0%	0.0%	1.3%	0.0%	0.0%	37.5%	0.0%	0.0%	0.0%
<b>Firearm</b>									
Stolen	\$1,500	\$0	\$1,150	\$1,300	\$0	\$0	\$1,225	\$0	\$0
Recovered	\$0	\$0	\$0	\$0	\$0	\$600	\$0	\$0	\$0
% Recovered	0.0%	0.0%	0.0%	0.0%	0.0%	0.0%	0.0%	0.0%	0.0%
<b>Household Goods</b>									
Stolen	\$0	\$0	\$0	\$1,169	\$0	\$1,131	\$0	\$0	\$0
Recovered	\$0	\$0	\$0	\$50	\$0	\$531	\$50	\$0	\$0
% Recovered	0.0%	0.0%	0.0%	4.3%	0.0%	46.9%	0.0%	0.0%	0.0%
<b>Consumable Goods</b>									
Stolen	\$0	\$0	\$106	\$50	\$0	\$238	\$0	\$0	\$0
Recovered	\$0	\$0	\$106	\$0	\$0	\$101	\$0	\$0	\$0
% Recovered	0.0%	0.0%	100.0%	0.0%	0.0%	42.4%	0.0%	0.0%	0.0%
<b>Livestock</b>									
Stolen	\$0	\$0	\$0	\$0	\$0	\$0	\$0	\$0	\$0
Recovered	\$0	\$0	\$0	\$0	\$0	\$0	\$0	\$0	\$0
% Recovered	0.0%	0.0%	0.0%	0.0%	0.0%	0.0%	0.0%	0.0%	0.0%
<b>Misc.</b>									
Stolen	\$35,261	\$0	\$38,734	\$6,575	\$0	\$49,706	\$10,259	\$0	\$0
Recovered	\$0	\$0	\$889	\$960	\$0	\$485	\$2,280	\$0	\$0
% Recovered	0.0%	0.0%	2.3%	14.6%	0.0%	1.0%	22.2%	0.0%	0.0%
<b>TOTALS</b>									
Stolen	\$46,578	\$0	\$246,392	\$41,924	\$0	\$131,289	\$77,988	\$0	\$0
Recovered	\$0	\$0	\$125,035	\$18,510	\$0	\$38,360	\$45,485	\$0	\$0
% Recovered	0.0%	0.0%	50.7%	44.2%	0.0%	29.2%	58.3%	0.0%	0.0%

# Stolen/Recovered Property Report

## October

Property Type	Eureka SO	Fallon PD	Henderson PD	Humboldt SO	Lander SO	Las Vegas Metro	Lincoln SO	Lovelock PD	Lyon SO
<b>Currency</b>									
Stolen	\$0	\$1,177	\$97,896	\$0	\$1,014	\$5,604,058	\$50	\$0	\$4,442
Recovered	\$0	\$0	\$103	\$0	\$0	\$2,048	\$0	\$0	\$0
% Recovered	0.0%	0.0%	0.1%	0.0%	0.0%	0.0%	0.0%	0.0%	0.0%
<b>Jewelry</b>									
Stolen	\$0	\$500	\$696,789	\$0	\$0	\$2,231,965	\$0	\$0	\$7,035
Recovered	\$0	\$0	\$25,257	\$0	\$0	\$2,984	\$0	\$0	\$0
% Recovered	0.0%	0.0%	3.6%	0.0%	0.0%	0.1%	0.0%	0.0%	0.0%
<b>Clothing</b>									
Stolen	\$0	\$415	\$33,882	\$0	\$0	\$358,935	\$0	\$0	\$0
Recovered	\$0	\$335	\$1,835	\$0	\$0	\$23,602	\$0	\$0	\$0
% Recovered	0.0%	80.7%	5.4%	0.0%	0.0%	6.6%	0.0%	0.0%	0.0%
<b>Motor Vehicle</b>									
Stolen	\$0	\$10,000	\$1,629,173	\$0	\$7,000	\$3,107,437	\$43,307	\$0	\$10,550
Recovered	\$0	\$10,000	\$1,354,285	\$0	\$7,000	\$2,054,313	\$30,907	\$0	\$1,800
% Recovered	0.0%	100.0%	83.1%	0.0%	100.0%	66.1%	71.4%	0.0%	17.1%
<b>Office Equipment</b>									
Stolen	\$0	\$0	\$11,769	\$0	\$0	\$834,002	\$0	\$0	\$0
Recovered	\$0	\$0	\$105	\$0	\$0	\$9,874	\$0	\$0	\$0
% Recovered	0.0%	0.0%	0.9%	0.0%	0.0%	1.2%	0.0%	0.0%	0.0%
<b>TV, VCR, Camera, Etc.</b>									
Stolen	\$0	\$539	\$132,068	\$0	\$0	\$1,220,697	\$0	\$0	\$7,485
Recovered	\$0	\$0	\$4,499	\$0	\$0	\$10,789	\$0	\$0	\$0
% Recovered	0.0%	0.0%	3.4%	0.0%	0.0%	0.9%	0.0%	0.0%	0.0%
<b>Firearm</b>									
Stolen	\$0	\$0	\$60,915	\$0	\$0	\$91,064	\$0	\$0	\$0
Recovered	\$0	\$0	(\$300)	\$0	\$0	\$15,430	\$0	\$0	\$0
% Recovered	0.0%	0.0%	-0.5%	0.0%	0.0%	16.9%	0.0%	0.0%	0.0%
<b>Household Goods</b>									
Stolen	\$0	\$0	\$46,749	\$0	\$0	\$218,484	\$0	\$0	\$655
Recovered	\$0	\$0	\$3,337	\$0	\$0	\$2,307	\$0	\$0	\$0
% Recovered	0.0%	0.0%	7.1%	0.0%	0.0%	1.1%	0.0%	0.0%	0.0%
<b>Consumable Goods</b>									
Stolen	\$0	\$250	\$5,064	\$0	\$10	\$69,237	\$0	\$0	\$227
Recovered	\$0	\$0	\$1,825	\$0	\$10	\$9,917	\$0	\$0	\$135
% Recovered	0.0%	0.0%	36.0%	0.0%	100.0%	14.3%	0.0%	0.0%	59.5%
<b>Livestock</b>									
Stolen	\$0	\$0	\$2,100	\$0	\$0	\$0	\$0	\$0	\$0
Recovered	\$0	\$0	\$0	\$0	\$0	\$0	\$0	\$0	\$0
% Recovered	0.0%	0.0%	0.0%	0.0%	0.0%	0.0%	0.0%	0.0%	0.0%
<b>Misc.</b>									
Stolen	\$0	\$2,885	\$456,130	\$0	\$0	\$1,924,623	\$9,920	\$0	\$17,550
Recovered	\$0	\$441	\$110,149	\$0	\$0	\$31,250	\$0	\$0	\$371
% Recovered	0.0%	15.3%	24.1%	0.0%	0.0%	1.6%	0.0%	0.0%	2.1%
<b>TOTALS</b>									
Stolen	\$0	\$15,766	\$3,172,535	\$0	\$8,024	\$15,660,502	\$53,277	\$0	\$47,944
Recovered	\$0	\$10,776	\$1,501,095	\$0	\$7,010	\$2,162,514	\$30,907	\$0	\$2,306
% Recovered	0.0%	68.3%	47.3%	0.0%	87.4%	13.8%	58.0%	0.0%	4.8%

# Stolen/Recovered Property Report

## October 2007

Property Type	Mesquite PD	Mineral SO	NLVPD	Nye SO	Pershing SO	Reno PD	Sparks PD	Storey SO	Taxicab	TMCC PD
<b>Currency</b>										
Stolen	\$505	\$4,429	\$124,805	\$30,270	\$0	\$88,033	\$10,549	\$0	\$990	\$743
Recovered	\$0	\$0	\$0	\$140	\$0	\$7,171	\$60	\$0	\$0	\$0
% Recovered	0.0%	0.0%	0.0%	0.5%	0.0%	8.1%	0.6%	0.0%	0.0%	0.0%
<b>Jewelry</b>										
Stolen	\$0	\$0	\$294,056	\$250	\$0	\$198,504	\$56,012	\$0	\$5,000	\$0
Recovered	\$0	\$0	\$305	\$0	\$0	\$5,666	\$891	\$0	\$0	\$0
% Recovered	0.0%	0.0%	0.1%	0.0%	0.0%	2.9%	1.6%	0.0%	0.0%	0.0%
<b>Clothing</b>										
Stolen	\$0	\$0	\$14,047	\$110	\$0	\$19,107	\$11,486	\$0	\$0	\$0
Recovered	\$0	\$0	\$1,338	\$35	\$0	\$3,807	\$3,709	\$0	\$0	\$0
% Recovered	0.0%	0.0%	9.5%	31.8%	0.0%	19.9%	32.3%	0.0%	0.0%	0.0%
<b>Motor Vehicle</b>										
Stolen	\$8,500	\$0	\$1,861,307	\$80,000	\$0	\$532,907	\$230,000	\$0	\$0	\$0
Recovered	\$0	\$0	\$1,475,865	\$22,000	\$0	\$407,621	\$169,500	\$0	\$0	\$0
% Recovered	0.0%	0.0%	79.3%	27.5%	0.0%	76.5%	73.7%	0.0%	0.0%	0.0%
<b>Office Equipment</b>										
Stolen	\$0	\$0	\$0	\$500	\$0	\$110,496	\$18,488	\$0	\$0	\$2,161
Recovered	\$0	\$0	\$0	\$0	\$0	\$1,985	\$0	\$0	\$0	\$0
% Recovered	0.0%	0.0%	0.0%	0.0%	0.0%	1.8%	0.0%	0.0%	0.0%	0.0%
<b>TV, VCR, Camera, Etc.</b>										
Stolen	\$0	\$250	\$281,872	\$3,184	\$0	\$78,705	\$59,066	\$0	\$1,800	\$0
Recovered	\$0	\$250	\$2,437	\$14	\$0	\$628	\$1,644	\$0	\$0	\$0
% Recovered	0.0%	100.0%	0.9%	0.4%	0.0%	0.8%	2.8%	0.0%	0.0%	0.0%
<b>Firearm</b>										
Stolen	\$492	\$0	\$6,760	\$9,569	\$0	\$11,202	\$5,841	\$0	\$0	\$0
Recovered	\$0	\$0	\$500	\$69	\$0	\$800	\$543	\$0	\$0	\$0
% Recovered	0.0%	0.0%	7.4%	0.7%	0.0%	7.1%	9.3%	0.0%	0.0%	0.0%
<b>Household Goods</b>										
Stolen	\$1,050	\$0	\$65,862	\$3,000	\$0	\$5,642	\$85,507	\$0	\$0	\$0
Recovered	\$0	\$0	\$2,700	\$0	\$0	\$279	\$4,787	\$0	\$0	\$0
% Recovered	0.0%	0.0%	4.1%	0.0%	0.0%	4.9%	5.6%	0.0%	0.0%	0.0%
<b>Consumable Goods</b>										
Stolen	\$61	\$0	\$5,370	\$351	\$0	\$4,149	\$3,237	\$0	\$0	\$0
Recovered	\$61	\$0	\$1,528	\$48	\$0	\$790	\$665	\$0	\$0	\$0
% Recovered	100.0%	0.0%	28.5%	13.7%	0.0%	19.0%	20.5%	0.0%	0.0%	0.0%
<b>Livestock</b>										
Stolen	\$0	\$0	\$0	\$0	\$0	\$500	\$0	\$0	\$0	\$0
Recovered	\$0	\$0	\$0	\$0	\$0	\$0	\$0	\$0	\$0	\$0
% Recovered	0.0%	0.0%	0.0%	0.0%	0.0%	0.0%	0.0%	0.0%	0.0%	0.0%
<b>Misc.</b>										
Stolen	\$8,302	\$0	\$2,893,311	\$43,904	\$0	\$171,829	\$31,493	\$0	\$130	\$500
Recovered	\$1,144	\$0	\$6,201	\$1,803	\$0	\$14,692	\$1,451	\$0	\$0	\$0
% Recovered	13.8%	0.0%	0.2%	4.1%	0.0%	8.6%	4.6%	0.0%	0.0%	0.0%
<b>TOTALS</b>										
Stolen	\$18,910	\$4,679	\$5,547,390	\$171,138	\$0	\$1,221,074	\$511,679	\$0	\$7,920	\$3,404
Recovered	\$1,205	\$250	\$1,490,874	\$24,109	\$0	\$443,439	\$183,250	\$0	\$0	\$0
% Recovered	6.4%	5.3%	26.9%	14.1%	0.0%	36.3%	35.8%	0.0%	0.0%	0.0%

# Stolen/Recovered Property Report

## October

Property Type	UNLV PD	UNR PD	Washoe SO	Washoe Co Schl PD	Wendover PD	White Pine SO	Winnemucca PD	Yerington PD	Total By Property
<b>Currency</b>									
Stolen	\$195	\$120	\$15,903	\$50	\$750	\$30	\$50	\$0	\$6,014,704
Recovered	\$0	\$0	\$0	\$0	\$0	\$0	\$0	\$0	\$10,022
% Recovered	0.0%	0.0%	0.0%	0.0%	0.0%	0.0%	0.0%	0.0%	0.2%
<b>Jewelry</b>									
Stolen	\$5,792	\$0	\$60,315	\$0	\$4,100	\$0	\$0	\$0	\$3,596,120
Recovered	\$0	\$0	\$0	\$0	\$0	\$0	\$0	\$0	\$35,183
% Recovered	0.0%	0.0%	0.0%	0.0%	0.0%	0.0%	0.0%	0.0%	1.0%
<b>Clothing</b>									
Stolen	\$701	\$0	\$4,322	\$0	\$730	\$0	\$0	\$0	\$447,781
Recovered	\$110	\$0	\$0	\$0	\$0	\$0	\$0	\$0	\$35,264
% Recovered	15.7%	0.0%	0.0%	0.0%	0.0%	0.0%	0.0%	0.0%	7.9%
<b>Motor Vehicle</b>									
Stolen	\$37,400	\$30,000	\$179,201	\$0	\$0	\$4,000	\$400	\$0	\$8,073,848
Recovered	\$22,775	\$30,000	\$69,002	\$0	\$0	\$0	\$400	\$0	\$5,874,068
% Recovered	60.9%	100.0%	38.5%	0.0%	0.0%	0.0%	100.0%	0.0%	72.8%
<b>Office Equipment</b>									
Stolen	\$0	\$700	\$15,567	\$99	\$0	\$0	\$0	\$0	\$1,001,797
Recovered	\$0	\$0	\$0	\$99	\$0	\$0	\$0	\$0	\$12,063
% Recovered	0.0%	0.0%	0.0%	100.0%	0.0%	0.0%	0.0%	0.0%	1.2%
<b>TV, VCR, Camera, Etc.</b>									
Stolen	\$29,053	\$6,510	\$22,429	\$200	\$1,562	\$350	\$0	\$0	\$1,862,363
Recovered	\$2,500	\$500	\$0	\$0	\$0	\$0	\$0	\$0	\$24,926
% Recovered	8.6%	7.7%	0.0%	0.0%	0.0%	0.0%	0.0%	0.0%	1.3%
<b>Firearm</b>									
Stolen	\$0	\$0	\$21,541	\$0	\$0	\$0	\$0	\$0	\$212,559
Recovered	\$0	\$0	\$0	\$0	\$0	\$0	\$0	\$0	\$17,642
% Recovered	0.0%	0.0%	0.0%	0.0%	0.0%	0.0%	0.0%	0.0%	8.3%
<b>Household Goods</b>									
Stolen	\$0	\$0	\$5,770	\$0	\$20	\$0	\$0	\$0	\$435,039
Recovered	\$0	\$0	\$0	\$0	\$0	\$0	\$0	\$0	\$14,041
% Recovered	0.0%	0.0%	0.0%	0.0%	0.0%	0.0%	0.0%	0.0%	3.2%
<b>Consumable Goods</b>									
Stolen	\$40	\$0	\$152	\$0	\$9	\$400	\$12	\$0	\$88,963
Recovered	\$0	\$0	\$5	\$0	\$4	\$0	\$12	\$0	\$15,207
% Recovered	0.0%	0.0%	3.3%	0.0%	44.4%	0.0%	100.0%	0.0%	17.1%
<b>Livestock</b>									
Stolen	\$0	\$0	\$0	\$0	\$0	\$0	\$0	\$0	\$2,600
Recovered	\$0	\$0	\$0	\$0	\$0	\$0	\$0	\$0	\$0
% Recovered	0.0%	0.0%	0.0%	0.0%	0.0%	0.0%	0.0%	0.0%	0.0%
<b>Misc.</b>									
Stolen	\$3,174	\$2,280	\$89,150	\$1,572	\$170	\$1,970	\$0	\$2,896	\$5,802,324
Recovered	\$174	\$30	\$399	\$0	\$0	\$0	\$0	\$0	\$172,719
% Recovered	5.5%	1.3%	0.4%	0.0%	0.0%	0.0%	0.0%	0.0%	3.0%
<b>TOTALS</b>									
Stolen	\$76,355	\$39,610	\$414,350	\$1,921	\$7,341	\$6,750	\$462	\$2,896	\$27,538,098
Recovered	\$25,559	\$30,530	\$69,406	\$99	\$4	\$0	\$412	\$0	\$6,211,135
% Recovered	33.5%	77.1%	16.8%	5.2%	0.1%	0.0%	89.2%	0.0%	22.6%

## Nevada--Assaults on Officers by Agency--UCR

### October 2007

Agency	October 2007 Offenses	October 2007 Cleared	2007 YTD Offenses	2007 YTD Cleared	October 2006 Offenses	October 2006 Cleared	2006 YTD Offenses	2006 YTD Cleared
Boulder	0	0	0	0	0	0	0	0
Carlin PD	0	0	1	0	0	0	1	0
Carson SO	1	1	19	19	4	4	10	9
Churchill SO	2	2	6	6	0	0	12	11
ClrkSchIDst PD	0	0	9	9	0	0	10	9
Douglas SO	0	0	16	15	0	0	7	7
Elko PD	1	1	10	9	0	0	7	4
Elko SO	0	0	0	0	0	0	0	0
Esmeralda SO	0	0	0	0	0	0	0	0
Eureka SO	0	0	0	0	0	0	2	2
Fallon PD	0	0	1	1	0	0	1	1
Henderson PD	1	1	21	21	2	2	9	7
Highway Patrol	2	2	17	17	5	5	35	32
Humboldt SO	0	0	1	1	0	0	0	0
Lander SO	0	0	0	0	0	0	0	0
Lincoln SO	0	0	0	0	0	0	0	0
Lovelock PD	0	0	0	0	0	0	0	0
LV Fire Dept	0	0	0	0	0	0	0	0
LV Metro	23	23	292	275	36	36	340	325
Lyon SO	0	0	4	4	3	2	11	10
Mesquite PD	0	0	0	0	0	0	0	0
Mineral SO	0	0	4	4	0	0	0	0
NV Div Investigations	0	0	0	0	0	0	0	0
NLVPD	4	4	43	41	5	5	28	26
Nye SO	2	0	11	2	0	0	10	5
Pershing SO	0	0	0	0	0	0	0	0
Reno PD	3	0	36	25	1	1	17	17
Sparks PD	0	0	12	12	1	1	8	7
Storey SO	0	0	0	0	0	0	0	0
Taxicab Authority	0	0	0	0	0	0	0	0
TMCC PD	0	0	0	0	0	0	0	0
UNLV PD	0	0	2	2	0	0	0	0
UNR PD	0	0	4	4	0	0	0	0
Washoe SO	0	0	0	0	0	0	0	0
Washoe Co Schl PD	0	0	2	2	0	0	0	0
Wendover PD	0	0	2	2	0	0	4	4
White Pine SO	0	0	1	1	0	0	2	1
Winnemucca PD	0	0	1	1	0	0	2	2
Yerington PD	0	0	0	0	0	0	0	0
<b>TOTALS</b>	<b>39</b>	<b>34</b>	<b>515</b>	<b>473</b>	<b>57</b>	<b>56</b>	<b>516</b>	<b>479</b>

# Nevada -- Assaults by Agency/Weapon/Assignment -- UCR

## October 2007

Table 16

Agency	Total Assaults	Number Cleared	Firearm	Knife / Cutting Device	Other Danger. Weapon	Hands, Fists, Feet, Etc.	2-Officer Vehicle	1-Officer Vehicle-Alone	1-Officer Vehicle-Assisted	Det./Spec. Assign. - Alone	Det./Spec. Assign. - Assisted	Other-Alone	Other-Assisted
Boulder City PD	0	0	0	0	0	0	0	0	0	0	0	0	0
Carlin PD	0	0	0	0	0	0	0	0	0	0	0	0	0
Carson City SO	1	1	0	0	0	1	0	0	1	0	0	0	0
Churchill Co SO	2	2	0	0	0	2	0	0	0	0	0	0	2
Clark School Dist PD	0	0	0	0	0	0	0	0	0	0	0	0	0
Douglas Co SO	0	0	0	0	0	0	0	0	0	0	0	0	0
Elko PD	1	1	0	0	0	1	0	0	1	0	0	0	0
Elko Co SO	0	0	0	0	0	0	0	0	0	0	0	0	0
Esmeralda Co SO	0	0	0	0	0	0	0	0	0	0	0	0	0
Eureka Co SO	0	0	0	0	0	0	0	0	0	0	0	0	0
Fallon PD	0	0	0	0	0	0	0	0	0	0	0	0	0
Henderson PD	1	1	0	0	0	1	0	0	0	0	0	0	1
NV Highway Patrol	2	2	0	0	0	2	0	2	0	0	0	0	0
Humboldt Co SO	0	0	0	0	0	0	0	0	0	0	0	0	0
Lander Co SO	0	0	0	0	0	0	0	0	0	0	0	0	0
Lincoln Co SO	0	0	0	0	0	0	0	0	0	0	0	0	0
Lovelock PD	0	0	0	0	0	0	0	0	0	0	0	0	0
Las Vegas Fire Dept	0	0	0	0	0	0	0	0	0	0	0	0	0
Las Vegas Metro PD	23	23	0	0	6	17	15	3	4	0	1	0	0
Lyon Co SO	0	0	0	0	0	0	0	0	0	0	0	0	0
Mesquite PD	0	0	0	0	0	0	0	0	0	0	0	0	0
Mineral Co SO	0	0	0	0	0	0	0	0	0	0	0	0	0
NV Div of Investigations	0	0	0	0	0	0	0	0	0	0	0	0	0
North Las Vegas PD	4	4	0	1	1	2	0	1	1	0	0	0	2
Nye Co SO	2	0	0	1	1	0	2	0	0	0	0	0	0
Pershing Co SO	0	0	0	0	0	0	0	0	0	0	0	0	0
Reno PD	3	0	0	0	2	1	2	1	0	0	0	0	0
Sparks PD	0	0	0	0	0	0	0	0	0	0	0	0	0
Storey Co SO	0	0	0	0	0	0	0	0	0	0	0	0	0
Taxi Authority	0	0	0	0	0	0	0	0	0	0	0	0	0
TMCC PD	0	0	0	0	0	0	0	0	0	0	0	0	0
UNLV PD	0	0	0	0	0	0	0	0	0	0	0	0	0
UNR PD	0	0	0	0	0	0	0	0	0	0	0	0	0
Washoe Co SO	0	0	0	0	0	0	0	0	0	0	0	0	0
Washoe Co School PD	0	0	0	0	0	0	0	0	0	0	0	0	0
West Westwendover PD	0	0	0	0	0	0	0	0	0	0	0	0	0
White Pine Co SO	0	0	0	0	0	0	0	0	0	0	0	0	0
Winnemucca PD	0	0	0	0	0	0	0	0	0	0	0	0	0
Yerington PD	0	0	0	0	0	0	0	0	0	0	0	0	0
<b>TOTALS</b>	<b>39</b>	<b>34</b>	<b>0</b>	<b>2</b>	<b>10</b>	<b>27</b>	<b>19</b>	<b>7</b>	<b>7</b>	<b>0</b>	<b>1</b>	<b>0</b>	<b>5</b>

28

## Nevada -- Officer Assaults by Activity/Weapon/Assignment -- UCR

### October 2007

Table 17

ACTIVITY TYPE	Total Assaults	Number Cleared	Firearm	Knife / Cutting Device	Other Danger. Weapon	Hands, Fists, Feet, Etc.	2-Officer Vehicle	1-Officer Vehicle- Alone	1-Officer Vehicle- Assisted	Det./Spec. Assign.- Alone	Det./Spec. Assign.- Assisted	Other- Alone	Other- Assisted
DOMESTIC / OTHER DISTURBANCE	17	13	0	1	2	14	13	2	1	0	1	0	0
BURGLARY IN PROGRESS	0	0	0	0	0	0	0	0	0	0	0	0	0
ROBBERY IN PROGRESS	1	0	0	0	1	0	1	0	0	0	0	0	0
ATTEMPTING OTHER ARREST	1	1	0	0	0	1	0	0	1	0	0	0	0
CIVIL DISORDER	0	0	0	0	0	0	0	0	0	0	0	0	0
HANDLING PRISONER	4	4	0	0	0	4	0	0	2	0	0	0	2
INVEST. SUSP. PERSONS / CIRCUM.	5	5	0	0	2	3	4	0	1	0	0	0	0
AMBUSH-NO WARNING	0	0	0	0	0	0	0	0	0	0	0	0	0
MENTALLY DERANGED	1	1	0	0	0	1	0	0	0	0	0	0	1
TRAFFIC PURSUITS / STOPS	6	6	0	0	2	4	1	5	0	0	0	0	0
ALL OTHER	4	4	0	1	3	0	0	0	2	0	0	0	2
<b>TOTALS</b>	<b>39</b>	<b>34</b>	<b>0</b>	<b>2</b>	<b>10</b>	<b>27</b>	<b>19</b>	<b>7</b>	<b>7</b>	<b>0</b>	<b>1</b>	<b>0</b>	<b>5</b>

29

## Nevada--Assaults with Injury/without Injury--UCR

**October 2007**

Agency	Total Assaults by weapon	Firearm		Cutting Instruments		Other Dangerous weapons		Hands, Fists, Feet, Etc.			
		With personal injury	Without personal injury	With personal injury	Without personal injury	With personal injury	Without personal injury	With personal injury	Without personal injury		
Boulder City PD	0	0	0	0	0	0	0	0	0		
Carlin PD	0	0	0	0	0	0	0	0	0		
Carson City SO	1	0	1	0	0	0	0	0	1		
Churchill Co SO	2	2	0	0	0	0	0	2	0		
Clark Co Schl Dist PD	0	0	0	0	0	0	0	0	0		
Douglas Co SO	0	0	0	0	0	0	0	0	0		
Elko Co SO	0	0	0	0	0	0	0	0	0		
Elko PD	1	0	1	0	0	0	0	0	1		
Esmeralda Co SO	0	0	0	0	0	0	0	0	0		
Eureka Co SO	0	0	0	0	0	0	0	0	0		
Fallon PD	0	0	0	0	0	0	0	0	0		
Henderson PD	1	0	1	0	0	0	0	0	1		
NV Highway Patrol	2	0	2	0	0	0	0	0	2		
Humboldt Co SO	0	0	0	0	0	0	0	0	0		
Lander Co SO	0	0	0	0	0	0	0	0	0		
Las Vegas Metro PD	23	4	19	0	0	0	0	1	5	3	14
Lincoln Co SO	0	0	0	0	0	0	0	0	0	0	0
Lovelock PD	0	0	0	0	0	0	0	0	0	0	0
Lyon Co SO	0	0	0	0	0	0	0	0	0	0	0
Mesquite PD	0	0	0	0	0	0	0	0	0	0	0
Mineral Co SO	0	0	0	0	0	0	0	0	0	0	0
NV Div Investigations	0	0	0	0	0	0	0	0	0	0	0
North Las Vegas PD	4	1	3	0	0	0	1	0	1	1	1
Nye Co SO	2	0	2	0	0	0	1	0	1	0	0
Pershing Co SO	0	0	0	0	0	0	0	0	0	0	0
Reno PD	3	1	2	0	0	0	0	1	1	0	1
Sparks PD	0	0	0	0	0	0	0	0	0	0	0
Storey Co SO	0	0	0	0	0	0	0	0	0	0	0
Taxicab Authority	0	0	0	0	0	0	0	0	0	0	0
TMCC PD	0	0	0	0	0	0	0	0	0	0	0
UNLV PD	0	0	0	0	0	0	0	0	0	0	0
UNR PD	0	0	0	0	0	0	0	0	0	0	0
Washoe Co SO	0	0	0	0	0	0	0	0	0	0	0
Washoe Co School Dist.	0	0	0	0	0	0	0	0	0	0	0
West Wendover PD	0	0	0	0	0	0	0	0	0	0	0
White Pine Co SO	0	0	0	0	0	0	0	0	0	0	0
Winnemucca PD	0	0	0	0	0	0	0	0	0	0	0
Yerington PD	0	0	0	0	0	0	0	0	0	0	0
<b>Totals</b>	<b>39</b>	<b>8</b>	<b>31</b>	<b>0</b>	<b>0</b>	<b>0</b>	<b>2</b>	<b>2</b>	<b>8</b>	<b>6</b>	<b>21</b>

## Nevada--Time of Assaults on Officers--UCR

### October 2007

Agency	12:01- 2:00 AM	2:00- 4:00 AM	4:00- 6:00 AM	6:00- 8:00 AM	8:00- 10:00 AM	10:00- 12:00 AM	12:01- 2:00 PM	2:00- 4:00 PM	4:00- 6:00 PM	6:00- 8:00 PM	8:00- 10:00 PM	10:00- 12:00 PM
Boulder City PD	0	0	0	0	0	0	0	0	0	0	0	0
Carlin PD	0	0	0	0	0	0	0	0	0	0	0	0
Carson City SO	0	0	0	0	0	0	0	0	0	1	0	0
Churchill Co SO	0	0	0	0	0	0	0	0	0	0	0	2
Clark Co Schl Dist PD	0	0	0	0	0	0	0	0	0	0	0	0
Douglas Co SO	0	0	0	0	0	0	0	0	0	0	0	0
Elko Co SO	0	0	0	0	0	0	0	0	0	0	0	0
Elko PD	0	1	0	0	0	0	0	0	0	0	0	0
Esmeralda Co SO	0	0	0	0	0	0	0	0	0	0	0	0
Eureka Co SO	0	0	0	0	0	0	0	0	0	0	0	0
Fallon PD	0	0	0	0	0	0	0	0	0	0	0	0
Henderson PD	0	1	0	0	0	0	0	0	0	0	0	0
Highway Patrol	1	0	1	0	0	0	0	0	0	0	0	0
Humboldt Co SO	0	0	0	0	0	0	0	0	0	0	0	0
Lander Co SO	0	0	0	0	0	0	0	0	0	0	0	0
Las Vegas Metro PD	1	2	3	0	0	0	0	3	4	2	2	6
Lincoln Co SO	0	0	0	0	0	0	0	0	0	0	0	0
Lovelock PD	0	0	0	0	0	0	0	0	0	0	0	0
Lyon Co SO	0	0	0	0	0	0	0	0	0	0	0	0
Mesquite PD	0	0	0	0	0	0	0	0	0	0	0	0
Mineral Co SO	0	0	0	0	0	0	0	0	0	0	0	0
NV Div Investigations	0	0	0	0	0	0	0	0	0	0	0	0
North LV PD	1	0	0	0	1	0	0	0	0	0	2	0
Nye Co SO	0	0	0	0	0	0	0	0	1	0	0	1
Pershing Co SO	0	0	0	0	0	0	0	0	0	0	0	0
Reno PD	0	0	0	0	0	0	1	0	1	0	1	0
Sparks PD	0	0	0	0	0	0	0	0	0	0	0	0
Storey Co SO	0	0	0	0	0	0	0	0	0	0	0	0
Taxicab Authority	0	0	0	0	0	0	0	0	0	0	0	0
TMCC PD	0	0	0	0	0	0	0	0	0	0	0	0
UNLV PD	0	0	0	0	0	0	0	0	0	0	0	0
UNR PD	0	0	0	0	0	0	0	0	0	0	0	0
Washoe Co SO	0	0	0	0	0	0	0	0	0	0	0	0
Washoe Co Schl PD	0	0	0	0	0	0	0	0	0	0	0	0
West Wendover PD	0	0	0	0	0	0	0	0	0	0	0	0
White Pine Co SO	0	0	0	0	0	0	0	0	0	0	0	0
Winnemucca PD	0	0	0	0	0	0	0	0	0	0	0	0
Yerington PD	0	0	0	0	0	0	0	0	0	0	0	0
Totals	3	4	4	0	1	0	1	3	6	3	5	9

# Nevada -- Division Of Investigations

## Arrests for Narcotics Violations

October 2007

		10-	13-											23	25-	30-	35-	40-	45-	50-	55-	60-	Total	W	B	A	I																								
		<10	12	14	15	16	17	18	19	20	21	22	24	29	34	39	44	49	54	59	64	>64																													
<b>SALES/MANUFACTURING VIOLATIONS</b>																																																			
Opium or cocaine and their derivatives (morphine, heroin codeine)	M																								0																										
	F																								0																										
Marijuana	M																											1																							
	F																																																	1	
Synthetic narcotics- Manufactured narcotics that can cause true drug addiction (demerol, meth)	M																																																		
	F																																																		
Other dangerous, non-narcotic, drugs (barbituates, benzderine)	M																																																		
	F																																																		3
Sub-Total	M	0	0	0	0	0	0	0	0	0	0	0	0	0	1	3	0	0	0	0	0	0	0	4	0	0	0	0																							
	F	0	0	0	0	0	0	0	0	0	0	0	0	0	0	0	0	0	0	0	0	0	0	0	4	0	0	0																							
<b>POSSESSION VIOLATIONS</b>																																																			
Opium or cocaine and their derivatives (morphine, heroin codeine)	M																								0																										
	F																								0																										
Marijuana	M																											1									1			1											
	F																																																		5
Synthetic narcotics- Manufactured narcotics that can cause true drug addiction (demerol, meth)	M																																																		
	F																																																		
Other dangerous, non-narcotic, drugs (barbituates, benzderine)	M																																1	1			1						1	5							
	F																																			1	1	1						1	4	9					
Sub-Total	M	0	0	0	0	0	0	0	0	0	0	1	2	0	0	1	1	2	0	1	1	0	9	0	0	0	0																								
	F	0	0	0	0	0	0	0	0	0	0	0	0	3	1	1	0	1	0	0	0	0	6	15	0	0	0																								
<b>Total</b>		0	0	0	0	0	0	0	0	0	0	1	2	3	2	5	1	3	0	1	1	0	19	19	0	0	0	0																							

AGE, RACE AND SEX OF PERSONS CHARGED

18 Years of Age and over

October 2007

CLASSIFICATION OF OFFENSES	SEX															Total Over 18	RACE						
		18	19	20	21	22	23	24	25-29	30-34	35-39	40-44	45-49	50-54	55-59		60-64	over 65	White	Black	American Indian or Alaskan Native	Asian or Pacific Islander	
Murder and Nonnegligent Manslaughter	01a	Male		3		2			1	1	1	1							9				
		Female		1															1	8	1		1
Manslaughter by Negligence	01b	Male																	0				
		Female																	0				
Forcible Rape	02	Male							3		3	4		1					12				
		Female																	0	9	2		1
Robbery	03	Male	13	15	9	8	9	4	2	15	10	10	7	1	3	3			109				
		Female	1	1	1	2	1	1	1		3	1		1					13	67	52		3
Aggravated Assault (Return A-4a-d)	04	Male	8	8	11	9	4	11	8	43	27	21	23	16	5	6	4	2	206				
		Female	2	5	1		1	2	8	11	6	7	6	1				2	52	183	69	1	5
Burglary--Breaking or Entering	05	Male	17	18	7	7	8	6	6	28	19	16	14	7	10	2			165				
		Female		3	3	1	2	2		11	9	6	9	4					50	153	56	1	5
Larceny--Theft (except Motor Vehicle Theft)	06	Male	26	35	16	21	16	24	25	59	48	58	43	48	24	10	5	1	459				
		Female	21	17	14	18	9	11	3	21	23	39	27	23	12	3	1	1	243	528	152	10	19
Motor Vehicle Theft	07	Male	6	13	7	9	8	4	3	33	9	14	4	4	1			1	116				
		Female			4	1	1			2	9	7	3						27	115	24		4
Other Assaults (Return A-4e)	08	Male	18	34	31	31	37	36	35	173	124	135	108	96	42	27	9	14	950				
		Female	21	9	12	16	14	12	9	62	51	39	32	32	16	6	4		335	975	271	8	31
Arson	09	Male		1			5	2		11	14	6	13	6	5	2	1		66				
		Female					1													6			
Forgery & Counterfeiting	10	Male	1						1	7	9	6	10	1					37	77	22		4
		Female																					
Fraud	11	Male	3	5	6	2	2	4	2	14	27	15	27	13	6	6	3	1	136				
		Female	4	3	5	4	1	3	1	16	6	12	14	8	2	1	3		83	167	36	1	15
Embezzlement	12	Male	2	2	1	2	1			3	1	3	2	2	1				18				
		Female		3	1	1		3	1	2	7	2	2	1	2	1			26	32	6	1	5
Stolen Property; Buying, Receiving, Possessing	13	Male	2	4	4	3	6	6	5	16	22	11	5	5			1		90				
		Female		3		2		2	2	6	3	4	2						24	89	20		5
Vandalism	14	Male	12	8	9	7	3	4	7	16	8	11	5	12	3		1		106				
		Female	1						1	4	3	1	2	4	1				17	107	15		1
Weapons; Carrying, Possessing, etc.	15	Male	12	4	6	4	7	10	6	26	20	17	10	5	4	4	2		137				
		Female			1				1	2	1	3							8	100	38	6	1
Prostitution and Commercialized Vice	16	Male	2		2	5	3	3	21	25	16	21	10	6	4	2	1	1	122				
		Female	14	19	23	27	21	20	13	59	24	22	25	11	3	2			283	336	51	1	17
Sex Offenses (except Forcible Rape and Prostitution)	17	Male	4	3	4	2	3	2	1	14	11	16	14	15	11	3	6	5	114				
		Female								1	1			1	2				5	92	23		4
Drug Abuse Violations	18	Male	34	57	59	43	57	45	41	178	110	90	75	53	30	10	4	3	889				
		Female	4	12	8	6	8	11	12	26	24	17	26	26	5	4	1	0	190	715	341	6	17
(1) Sale/Manufacturing	180	Male	4	15	6	9	14	9	6	44	31	15	17	6	8	3	0	1	188				
Subtotal		Female	0	3	1	1	1	3	2	5	5	2	5	6	1	0	0	0	35	134	82	4	3
Opium or Cocaine and Their Derivatives (Morphine, Heroin, Codeine)	a	Male	1	5	2	2	10	3	1	14	13	4	5	2	2	2			66				
		Female		2			1			2	1	1	3		1				11	31	46		
Marijuana	b	Male	3	8	3	2	2	4	2	17	4	3	4		2			1	55				
		Female		1			2			2									5	37	21		2
Synthetic Narcotics--Manufactured Narcotics Which Cause True Drug Addiction (Demerol, Methadone)	c	Male		1		2	1	2	1	4	5	2	4	1	2				25				
		Female			1	1		1		1	1	1	2	2					10	30	4	1	
Other Dangerous Non-Narcotic Drugs (Barbiturates, Benzadrine)	d	Male		1	1	3	1		2	9	9	6	4	3	2	1			42				
		Female						2	2	2	1								9	36	11	3	1

CLASSIFICATION OF OFFENSES	SEX																Total Over 18	RACE				
		18	19	20	21	22	23	24	25-29	30-34	35-39	40-44	45-49	50-54	55-59	60-64		over 65	White	Black	American Indian or Alaskan Native	Asian or Pacific Islander
(2) Possession - Subtotal	185	Male 30	42	53	34	43	36	35	134	79	75	58	47	22	7	4	2	701	581	259	2	14
Opium or Cocaine and Their Derivatives (Morphine, Heroin, Codeine)	e	Male 1	7	6	5	3	6	1	15	6	10	11	9	6	1	1		88	69	46		2
Marijuana	f	Male 24	27	39	22	32	23	27	91	50	35	20	18	6	2	2		418	296	181	1	7
Synthetic Narcotics-Manufactured Narcotics Which Cause True Drug Addiction (Demerol, Methadone)	g	Male 5	2	5	4	6	5	6	19	19	22	17	17	8	3		1	139				
Other Dangerous Non-Narcotic Drugs (Barbiturates, Benzedrine)	h	Male 1	1			2	1	3	2	3	3	6	2	1				25	62	19		
Gambling Total	19	Male 1	0	0	0	0	0	0	0	0	0	0	0	0	0	0	0	0	1	0	0	0
Bookmaking (Horses and Sports Book)	a	Male																0				
Numbers and Lottery	b	Female																0				
All Other Gambling	c	Male 1																1				
Offenses Against Family and Children	20	Male 11	8	5	4	4	4	2	4	9	12	7	7	4	1			82	117	15	3	4
Driving Under the Influence	21	Male 15	5	21	44	42	42	47	178	132	102	82	89	61	37	15	8	920	1028	78	16	33
Liquor Laws	22	Male 64	59	57	22	6	5	4	40	22	23	52	45	42	14	12	4	471	461	70	23	5
Drunkenness	23	Male 17	12	18	2	1	1	4	5	5	4	9	5	4	1			88				
Disorderly Conduct	24	Male 3	2	4	4	5	2	5	19	17	20	9	17	17	3	6	1	134	3			
Vagrancy	25	Male 1	1	1	2	1			4	2	4	2	4	2			1	25	125	27	3	3
All Other Offenses (except Traffic) Total	26	Male 6	3	6	2	6	1	3	20	28	19	34	38	31	30	12	6	245	242	42	7	2
Suspicion	27	Male 8	6	8			1	2	4	6	2	3	2	4		2		48				
GRAND TOTAL		Male 92	115	94	111	118	104	93	534	380	422	468	350	222	105	45	22	3275	3041	1187	40	88
		Female 23	36	40	62	63	46	61	193	129	134	126	90	54	18	3	3	1081				
		Male																0				
		Female																0				
		476	540	503	504	489	440	448	1932	1419	1384	1354	1093	656	308	143	80	11769	8777	2598	127	273

Uniform Crime Reporting  
Records & Identification Bureau  
Department of Public Safety  
808 west Nye Lane  
Carson City NV 89703

**AGE, SEX, AND RACE OF PERSONS CHARGED**

**October 2007**

**18 Years of age and under**

(Count all Offences even if the Arrest is based on only one charge)

CLASSIFICATION OF OFFENSES	SEX	AGE							Total Under 18	RACE			
		Under 10	10-12	13-14	15	16	17	18		White	Black	American Indian or Alaskan Native	Asian or Pacific Islander
Murder and Nonnegligent Manslaughter	01a	Male				1		1	2				
		Female							0		2		
Manslaughter by Negligence	01b	Male							0				
		Female							0				
Forcible Rape	02	Male			1	1			2				
		Female							0	1	1		
Robbery	03	Male			2	2	8	9	21				
		Female		1	1	2	1		5	13	13		
Aggravated Assault (Return A-4a-d)	04	Male		2	3	3	4	8	20				
		Female			2	1		1	4	14	8		2
Burglary--Breaking or Entering	05	Male		2	11	9	21	9	52				
		Female		4	6	3	1	5	19	53	17	1	
Larceny--Theft (except Motor Vehicle Theft)	06	Male	3	13	24	29	32	28	129				
		Female		7	29	18	24	18	96	163	57	1	3
Motor Vehicle Theft	07	Male						10	10				
		Female				1	1	1	3	6	6	1	
Other Assaults (Return A-4e)	08	Male	2	15	27	10	10	16	80				
		Female			15	14	9	9	47	97	28		2
Arson	09	Male	2						2				
		Female							0	2			
Forgery & Counterfeiting	10	Male					1		1				
		Female			1				1	1	1		
Fraud	11	Male						1	1				
		Female							0		1		
Embezzlement	12	Male					1	1	2				
		Female					2	1	3	4		1	
Stolen Property; Buying, Receiving, Possessing	13	Male			2	3	4	1	10				
		Female			1	1	1		3	9	4		
Vandalism	14	Male	2	13	12	15	8	19	69				
		Female		1	4			1	6	65	7	1	2
Weapons; Carrying, Possessing, etc.	15	Male			6	4	3	5	18				
		Female				1			1	13	5	1	
Prostitution and Commercialized Vice	16	Male							0				
		Female							0				
Sex Offenses (except Forcible Rape and Prostitution)	17	Male	1	1	1	2	2		7				
		Female							0	5	1	1	
Drug Abuse Violations		Male	2	1	7	14	18	36	78				
Grand Total	18	Female	0	0	3	6	6	12	27	86	17	1	1
(1) Sale/Manufacturing Subtotal	180	Male	1	0	1	6	2	4	14				
		Female	0	0	2	3	3	3	11	21	4	0	0
Opium or Cocaine and Their Derivatives (Morphine, Heroin, Codeine)	a	Male							0				
		Female						1	1		1		
Marijuana	b	Male	1		1	3	1	2	8				
		Female			1	1	2	1	5	10	3		
Synthetic Narcotics-Manufactured Narc Cause True Drug Addiction (Der	c	Male							0				
		Female				1			1	1			
Other Dangerous Non-Narcotic Drugs (Barbiturates, Benzadrine	d	Male				3	1	2	6				
		Female			1	1	1	1	4	10			
(2) Possession - Subtotal	185	Male	1	1	6	8	16	32	64				
		Female	0	0	1	3	3	9	16	65	13	1	1
Opium or Cocaine and Their Derivatives (Morphine, Heroin, Codeine)	e	Male						1	1				
		Female							0		1		
Marijuana	f	Male	1		6	6	15	27	55				
		Female				2	3	9	14	56	11	1	1
Synthetic Narcotics-Manufactured Narc Cause True Drug Addiction (Der	g	Male					1		1		5		
		Female				1			1				
Other Dangerous Non-Narcotic Drugs (Barbiturates, Benzadrine	h	Male		1		2			1	4			
		Female			1				1	4	1		

CLASSIFICATION OF OFFENSES		SEX	Under						Total Under 18	RACE			
			10	10-12	13-14	15	16	17		White	Black	American Indian or Alaskan Native	Asian or Pacific Islander
Gambling Total	19	Male	0	0	1	0	0	0	1				
		Female	0	0	0	0	0	0	0	1	0	0	0
Bookmaking (Horses and Sports Book)	a	Male							0				
		Female							0				
Numbers and Lottery	b	Male							0				
		Female							0				
All Other Gambling	c	Male			1				1				
		Female							0	1			
Offenses Against Family and Children	20	Male		1			2	1	4				
		Female				2	1		3	7			
Driving Under the Influence	21	Male			1		3	6	10				
		Female					1		1	9		2	
Liquor Laws	22	Male			7	19	26	46	98				
		Female			8	7	14	25	54	134	12	4	2
Drunkenness	23	Male			1				2				
		Female						1	1	3			
Disorderly Conduct	24	Male	1	2	10	1	2		16				
		Female		4	3	3	3		13	24	5		
Vagrancy	25	Male					1	1	2				
		Female				1			1	2	1		
All Other Offenses (except Traffic) Total	26	Male	1	17	47	33	43	50	191				
		Female		6	28	22	26	20	102	246	34	4	9
Suspicion	27	Male							0				
		Female							0				
Curfew and Loitering Law Violati	28	Male	1	2	21	24	42	52	142				
		Female	1	2	25	16	13	19	76	183	33		2
Runaway	29	Male		5	18	12	13	9	57				
		Female	1	1	20	25	19	16	82	122	10	2	5
GRAND TOTAL			17	100	348	305	368	437	1575	1263	263	20	28

Uniform Crime Reporting  
Records & Identification Bureau  
Department of Public Safety  
808 West Nye Lane  
Carson City NV 89703



## Nevada UCR \*Footnotes / Exceptions

---

### October 2007

---

#### Table 1

--Nevada figures are annualized projections.

--"Assault" does not include simple assaults to allow direct comparison between the Nevada rate and the National rate for this Index offense. See Table 8 for a count of all assaults.

#### Table 2

--The LV Fire Department reports "Arson" offenses for the City of Las Vegas. The population figure for this agency represents jurisdiction and is not added to the county total. Similarly, the School District Police Departments in Clark and Washoe Counties are not added to county population estimates as they represent persons served (student enrollment plus staff.)

--Assault data in this table includes ALL assaults (aggravated and simple) reported for the current month.

--County crime rates are calculated following subtraction of populations of jurisdictions failing to report.

#### Table 3

-- In the "Nevada vs National Index Crime and Clearance Rates" sections, the "Assaults" numbers do not include simple assaults following FBI guidelines. Therefore, they may be compared directly to National rates.

-- National crime rate figures are the latest available for comparative use (2005). Nevada figures are annualized projections.

#### Table 13

--At various times, property values recovered will exceed values stolen for the current reporting period.

#### **General Notes:**

- The following agencies was unable to submit reports for this month:

- Carlin Police Department
- Clark County School District Police Department
- Elko County Sheriff Office
- Humboldt County Police Department
- Lovelock Police Department
- Storey County Sheriff

-- Any late reports not submitted in time for this publication will be incorporated in to the year-to-date totals in subsequent reports.