



UNIFORM CRIME REPORTING PROGRAM
UCR STATISTICAL DATA VERIFICATION FORM

As an agency administrator or designee for the _____, I have
(Name of Agency)
reviewed the UCR monthly statistics for **September 2007** which includes all UCR data submitted year to date. Based upon my or my designee's review and validation of same, I find that:

All data contained in the report for my agency is accurate and complete and may be released and made part of UCR publications for future distribution to the public and other interested UCR data subscribers.

Data contained in the report is inaccurate or incomplete and may not be published or released at this time. (If this choice is selected, please provide the reason in the space provided below.)

Reason: _____

The corrected data will be supplied to the UCR Program by: _____.
(Date)

This document must be signed and mailed to the Uniform Crime Reporting Program, 808 W. Nye Lane, Carson City, Nevada 89703 or faxed to (775) 684-6266 by **February 29th , 2008.**

Signature of Agency Administrator (or designee)

Name/Title of Agency Administrator (print or type)

Agency's Name/Location

Date



Disclaimer: The following information is preliminary and cannot be certified until it is published in the annual report, Crime and Justice in Nevada, which will be available after July 1, 2008.



Monthly Report



**September
2007**



**Phil Galeoto, Director
Department of Public Safety**

**Capt Philip K. O'Neill, Division Chief
Records and Identification Bureau**

**Josh Porter, Statistician II
Pam Sebring, Administrative Assistant IV
Sherri Sharp, Administrative Assistant II**

**Prepared by:
Records and Identification Bureau
Uniform Crime Reporting
333 W. Nye Lane Ste 100
Carson City, Nevada 89706
(775) 684-6262**

Nevada--Statewide Summary--UCR Index Crimes

September 2007

Offense	Crimes this Month	# Cleared this Month	% Cleared this Month	Crimes this YTD	# Cleared this YTD	% Cleared this YTD	September Crimes 2006	September Cleared 2006	% September Cleared 2006	2007 NV Rate / 1,000 (Proj) *	2006 NV Rate / 1,000	2006 Natl. Rate / 1,000
Murder	13	8	62	153	112	73	24	15	63	0.08	0.08	0.06
Rape	96	22	23	807	180	22	85	14	16	0.41	0.36	0.32
Robbery	595	140	24	5,116	1,154	23	590	117	20	2.60	2.25	1.41
Assault *	933	409	44	8,623	3,932	46	942	411	44	4.38	4.04	2.91
Burglary	1,835	127	7	18,479	1,677	9	2,055	159	8	9.39	9.85	7.27
Larceny	3,915	736	19	37,835	7,218	19	4,061	690	17	19.23	19.95	22.86
MV Theft	1,771	207	12	17,307	1,724	10	1,883	181	10	8.80	9.04	4.17
Arson	51	8	16	492	79	16	67	16	24	0.25	0.32	0.27
Total	9,209	1,657	18	88,812	16,076	18	9,707	1,603	17	45.14	45.90	39.27

* The projected Crime Rate for Assaults is computed after subtracting Simple Assaults from the total for all Assaults following FBI guidelines. Therefore, this rate may be compared directly to the National Rate. See Table 3 and the "Footnotes/Exceptions page for further information.

Nevada UCR - - Monthly Crime/ Clearance Summary - - All Crimes

Contributing Agency	Est. Pop	Murder		Rape		Robbery		Assault		Burglary		Larceny		MV Theft		Arson		Total Crimes	Crime Rate	Clearances	Clearance Rate
Carson County																		September 2007			
Carson SO	57,701	0	0	0	0	1	0	49	24	17	3	56	13	6	2	0	0	129	2.24	42	32.6%
County Total	57,701	0	0	0	0	1	0	49	24	17	3	56	13	6	2	0	0	129	2.24	42	32.6%
Churchill County																					
Churchill SO	19,072	0	0	0	1	0	0	28	17	11	0	15	3	0	0	1	2	55	2.88	23	41.8%
Fallon PD	8,299	0	0	0	0	0	0	26	16	3	1	34	6	3	1	0	0	66	7.95	24	36.4%
County Total	27,371	0	0	0	1	0	0	54	33	14	1	49	9	3	1	1	2	121	4.42	47	38.8%
Clark County																					
Boulder PD	15,478	0	0	0	0	0	0	2	1	6	0	4	0	2	0	0	0	14	0.90	1	7.1%
Clark Co. Schools	313,606	0	0	0	0	8	5	92	55	16	0	86	18	6	3	2	1	210	0.67	82	39.0%
Henderson	251,321	3	0	7	0	18	5	270	196	155	14	277	72	120	5	7	1	857	3.41	293	34.2%
LV Metro PD	1,391,866	5	3	64	8	451	97	2,674	1,020	1,144	46	2,149	342	1,327	163	18	0	7,832	5.63	1,679	21.4%
LV Fire Dept*																8	2	8	N/A	2	25.0%
Mesquite	17,656	0	0	0	0	0	0	18	18	1	0	27	10	3	2	0	0	49	2.78	30	61.2%
North Las Vegas F	198,516	0	0	2	1	53	15	323	185	166	6	273	48	146	9	4	0	967	4.87	264	27.3%
Taxicab Authority		0	0	0	0	2	0	8	7	1	0	11	0	0	0	0	0	22	0.00	7	31.8%
UNLV PD*	30,223	0	0	1	1	0	0	5	2	4	0	36	0	12	0	0	0	58	1.92	3	5.2%
County Total	1,874,837	8	3	74	10	532	122	3,392	1,484	1,493	66	2,863	490	1,616	182	39	4	10,017	5.34	2,361	23.6%
Douglas County																					
Douglas SO	51,770	0	0	0	0	0	0	62	21	14	2	43	7	4	0	1	0	124	2.40	30	24.2%
County Total	51,770	0	0	0	0	0	0	62	21	14	2	43	7	4	0	1	0	124	2.40	30	24.2%

*Population figure not included in county total
Table 2

5
Assault data includes ALL assaults (aggravated and simple).

Nevada UCR - - Monthly Crime/ Clearance Summary - - All Crimes

Contributing Agency	Est. Pop	Murder		Rape		Robbery		Assault		Burglary		Larceny		MV Theft		Arson		Total Crimes	Crime Rate	Clearances	Clearance Rate
September 2007																					
Elko County																					
Elko SO	23,004	0	0	0	0	0	0	0	0	0	0	0	0	0	0	0	0	0	0.00	0	0.0%
Carlin PD	2,281	0	0	0	0	0	0	0	0	0	0	0	0	0	0	0	0	0	0.00	0	0.0%
Elko PD	18,183	0	0	2	1	0	0	25	16	9	3	31	1	5	0	0	0	72	3.96	21	29.2%
WestWendover PD	4,871	0	0	0	0	0	0	11	10	3	3	8	2	1	1	0	0	23	4.72	16	69.6%
County Total	48,339	0	0	2	1	0	0	36	26	12	6	39	3	6	1	0	0	95	1.97	37	38.9%
Esmeralda County																					
Esmeralda SO	1,262	0	0	0	0	0	0	0	0	0	0	0	0	0	0	1	0	1	0.79	0	0.0%
County Total	1,262	0	0	0	0	0	0	0	0	0	0	0	0	0	0	1	0	1	0.79	0	0.0%
Eureka County																					
Eureka SO	1,460	0	0	0	0	0	0	2	2	2	2	2	1	0	0	0	0	6	4.11	5	83.3%
County Total	1,460	0	0	0	0	0	0	2	2	2	2	2	1	0	0	0	0	6	4.11	5	83.3%
Humboldt County																					
Humboldt SO	10,108	1	1	0	0	0	0	9	9	3	0	5	2	0	0	2	0	20	1.98	12	60.0%
Winnemucca PD	7,643	0	0	0	0	0	0	12	11	0	0	7	1	0	0	0	0	19	2.49	12	
County Total	17,751	1	1	0	0	0	0	21	20	3	0	12	3	0	0	2	0	39	2.20	24	61.5%

*Population figure not included in county total
Table 2

6
Assault data includes ALL assaults (aggravated and simple).

Nevada UCR - - Monthly Crime/ Clearance Summary - - All Crimes

Contributing Agency	Est. Pop	Murder		Rape		Robbery		Assault		Burglary		Larceny		MV Theft		Arson		Total Crimes	Crime Rate	Clearances	Clearance Rate
Lander County																		September 2007			
Lander SO	5,655	0	0	6	5	0	0	11	6	2	1	7	2	0	0	0	0	26	4.60	14	53.8%
County Total	5,655	0	0	6	5	0	0	11	6	2	1	7	2	0	0	0	0	26	4.60	14	53.8%
Lincoln County																					
Lincoln SO	3,987	0	0	0	0	0	0	0	1	3	0	5	0	0	0	0	0	8	2.01	1	12.5%
County Total	3,987	0	0	0	0	0	0	0	1	3	0	5	0	0	0	0	0	8	2.01	1	12.5%
Lyon County																					
Lyon SO	50,774	0	0	0	0	0	0	54	31	19	4	33	6	3	2	4	2	113	2.23	45	39.8%
Yerington PD	3,257	0	0	0	0	0	0	3	4	2	3	1	2	0	0	0	0	6	1.84	9	150.0%
County Total	54,031	0	0	0	0	0	0	57	35	21	7	34	8	3	2	4	2	119	2.20	54	45.4%
Mineral County																					
Mineral SO	4,399	0	0	1	1	0	0	5	4	2	1	1	0	1	0	0	0	10	2.27	6	60.0%
County Total	4,399	0	0	1	1	0	0	5	4	2	1	1	0	1	0	0	0	10	2.27	6	60.0%
Nye County																					
Nye SO	44,795	0	0	2	2	2	1	54	49	24	5	26	10	3	1	0	0	111	2.48	68	61.3%
County Total	44,795	0	0	2	2	2	1	54	49	24	5	26	10	3	1	0	0	111	2.48	68	61.3%

*Population figure not included in county total
Table 2

7
Assault data includes ALL assaults (aggravated and simple).

Nevada UCR - - Monthly Crime/ Clearance Summary - - All Crimes

Contributing Agency	Est. Pop	Murder		Rape		Robbery		Assault		Burglary		Larceny		MV Theft		Arson		Total Crimes	Crime Rate	Clearances	Clearance Rate
Pershing County																		September 2007			
Pershing SO	4,528	0	0	1	0	0	0	3	3	2	0	3	0	0	0	0	0	9	1.99	3	33.3%
Lovelock PD	2,427	0	0	0	0	0	0	0	0	0	0	0	0	0	0	0	0	0	0.00	0	0.0%
County Total	6,955	0	0	1	0	0	0	3	3	2	0	3	0	0	0	0	0	9	1.29	3	33.3%
Storey County																					
Storey	4,110	0	0	0	0	0	0	0	0	0	0	0	0	0	0	0	0	0	0.00	0	0.0%
County Total	4,110	0	0	0	0	0	0	0	0	0	0	0	0	0	0	0	0	0	0.00	0	0.0%
Washoe County																					
Washoe SO	106,868	0	0	0	0	2	1	103	64	31	8	63	10	17	1	1	0	217	2.03	84	38.7%
Reno PD	214,371	3	3	7	1	42	10	428	229	142	11	524	129	96	13	1	0	1,243	5.80	396	31.9%
Sparks PD	87,846	1	1	3	1	15	6	122	106	48	13	170	51	16	4	1	0	376	4.28	182	48.4%
UNR PD*	16,671	0	0	0	0	1	0	8	1	1	0	13	0	0	0	0	0	23	1.38	1	4.3%
Washoe Co Schl P	68,366	0	0	0	0	0	0	0	0	0	0	0	0	0	0	0	0	0	0.00	0	0.0%
TMCC PD*	14,161	0	0	0	0	0	0	0	0	1	0	1	0	0	0	0	0	2	0.14	0	0.0%
County Total	409,085	4	4	10	2	60	17	661	400	223	32	771	190	129	18	3	0	1,861	4.55	663	35.6%
White Pine County																					
White Pine SO	9,542	0	0	0	0	0	0	1	1	3	1	4	0	0	0	0	0	8	0.84	2	25.0%
County Total	9,542	0	0	0	0	0	0	1	1	3	1	4	0	0	0	0	0	8	0.84	2	25.0%
Grand Total	2,623,050	13	8	96	22	595	140	4,408	2,109	1,835	127	3,915	736	1,771	207	51	8	12,684	4.84	3,357	26.5%

*Population figure not included in county total
Table 2

8
Assault data includes ALL assaults (aggravated and simple).

Nevada UCR - - Monthly Crimes/Clearances Summary - - Index Crimes

September 2007

Est. Pop	Murder		Rape		Robbery		Assault		Burglary		Larceny		MV Theft		Arson		Total Crimes	Crime Rate	Total Clear	Clearance Rate	
Statewide Totals																					
(Crimes/Clearances)	2,623,050	13	8	96	22	595	140	933	409	1835	127	3915	736	1771	207	51	8	9209	3.51	1657	17.99

Nevada (Projected 2007) vs National (2006) Index Crime Rates

(per 1,000 population)

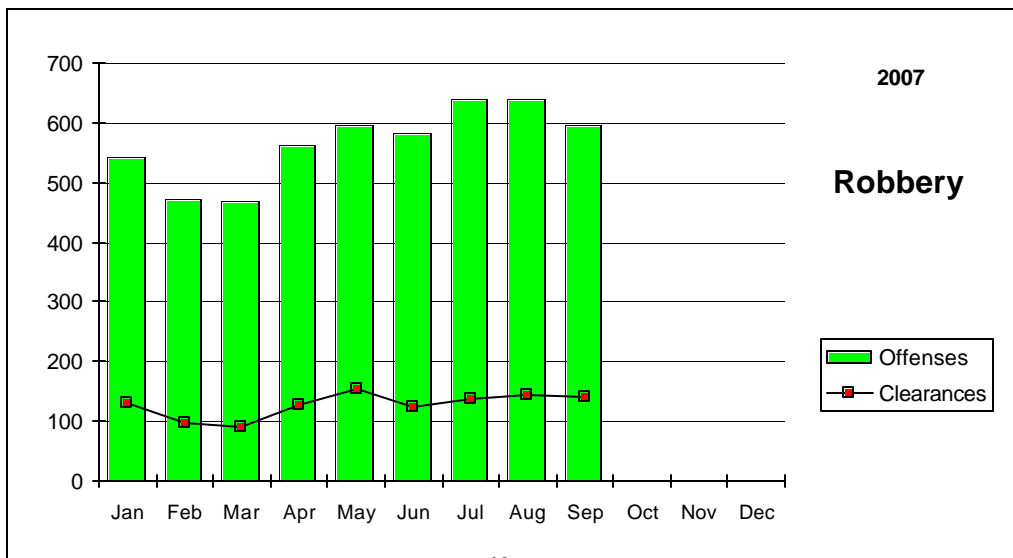
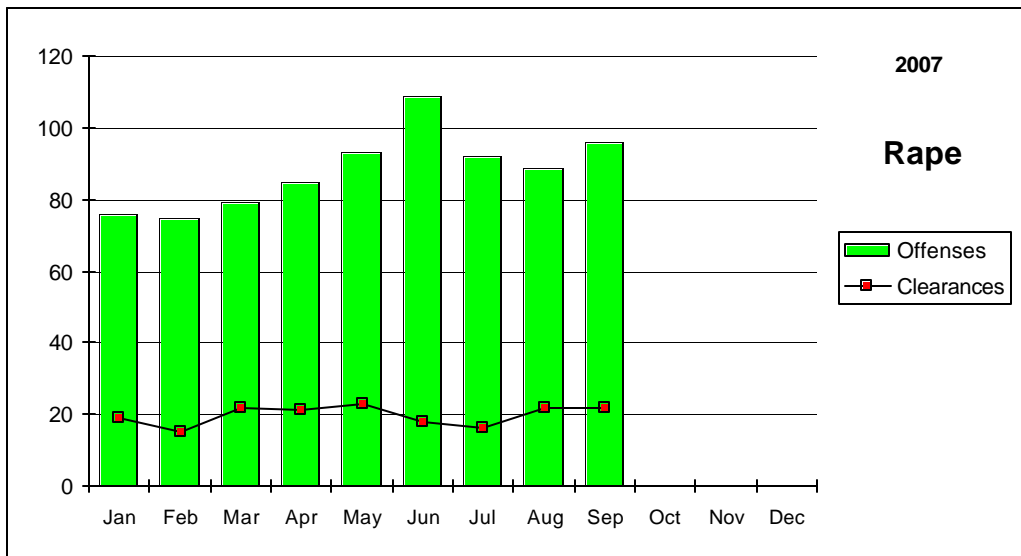
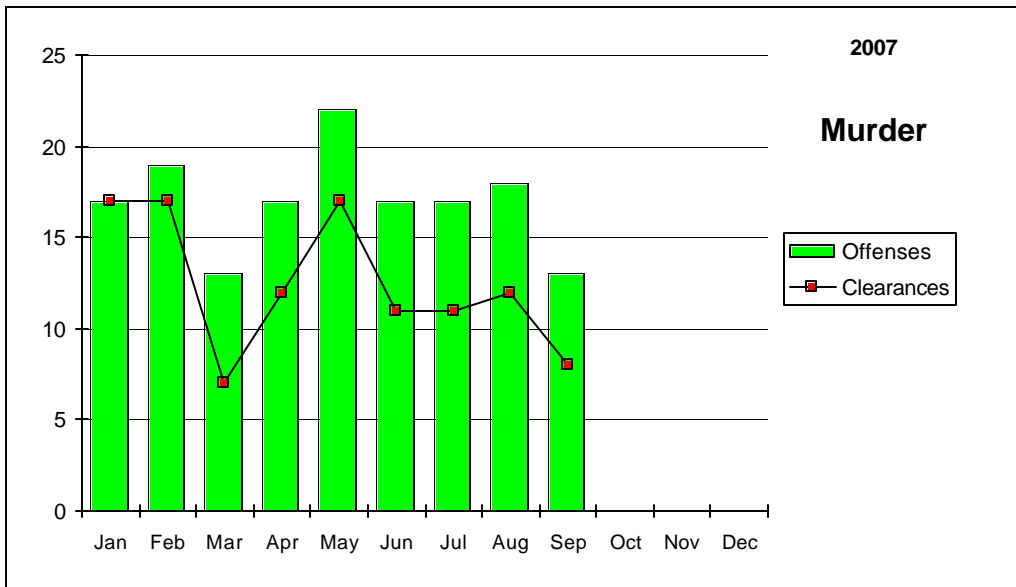
	Murder	Rape	Robbery	Assault	Burglary	Larceny	MV Theft	Arson	Crime Rate
Nevada	0.08	0.41	2.60	4.38	9.39	19.23	8.80	0.25	45.14
National	0.06	0.31	1.49	2.88	7.29	22.07	3.98	0.27	38.27

Nevada (Projected 2007) vs National (2006) Crime Clearance Rates

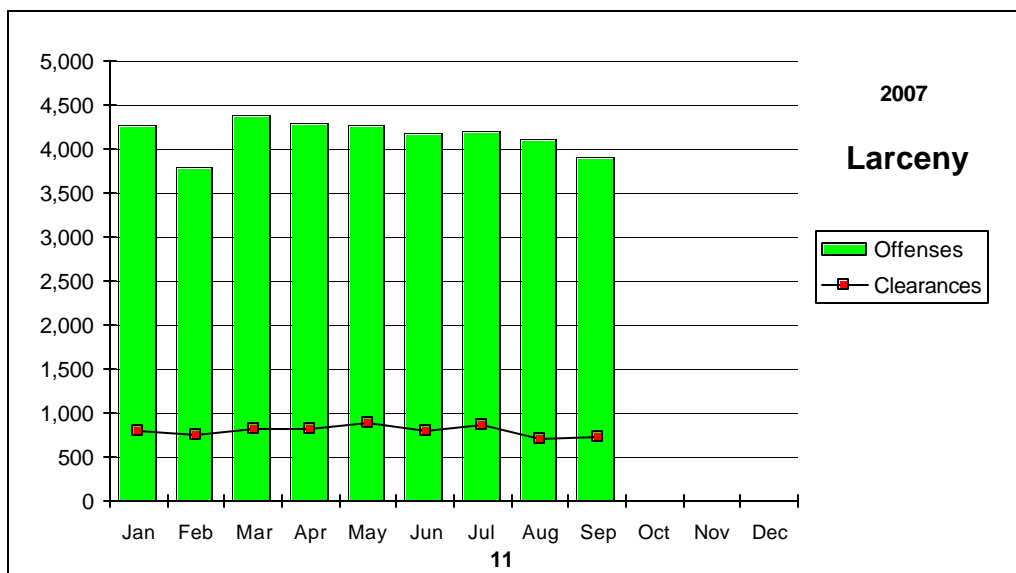
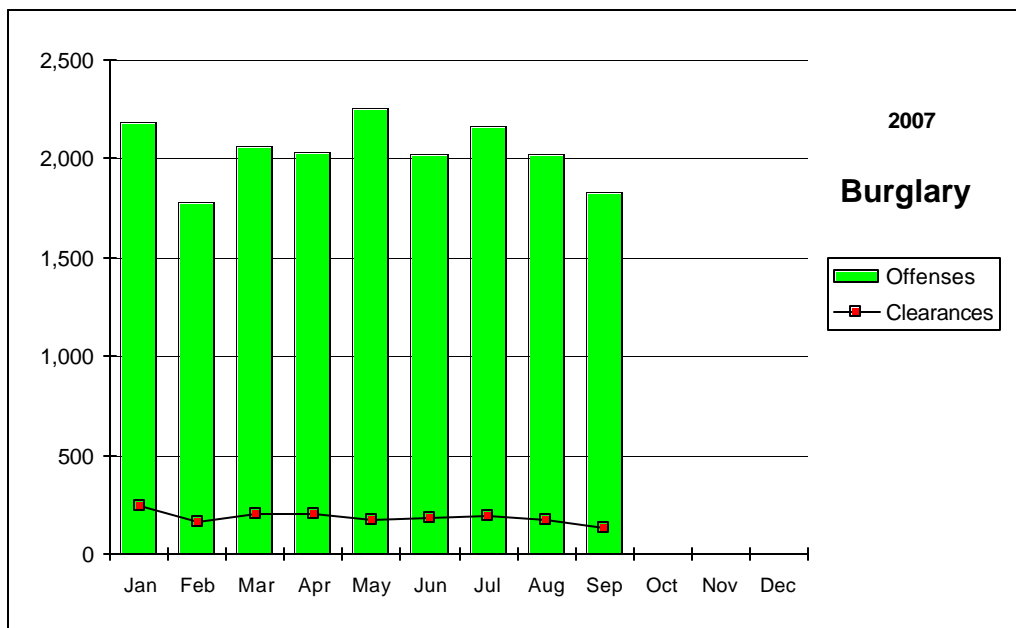
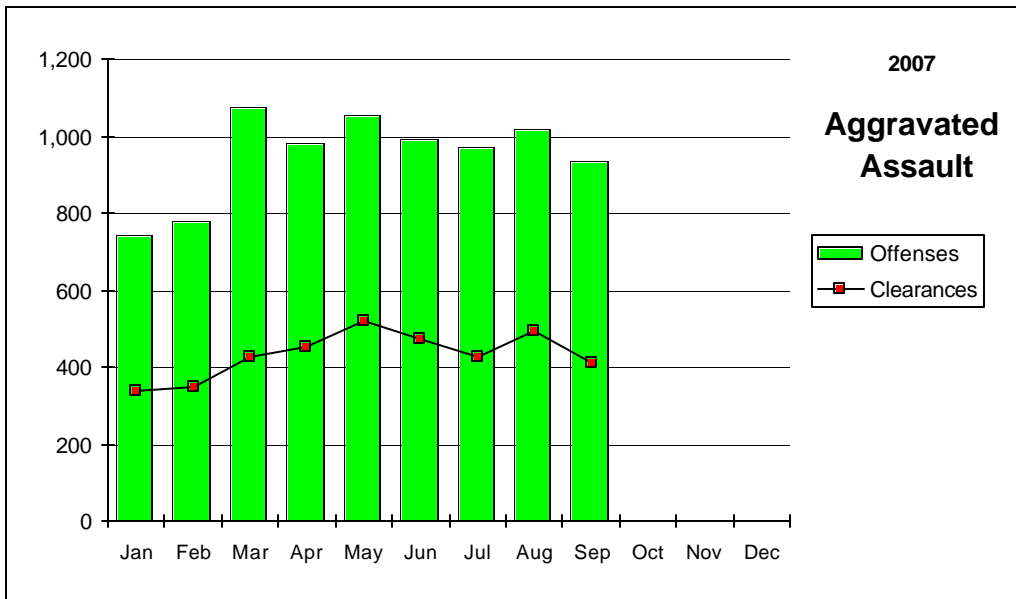
(by Percent)

	Murder	Rape	Robbery	Assault	Burglary	Larceny	MV Theft	Arson	Clear Rate
Nevada	73.2	22.3	22.6	45.6	9.1	19.1	10.0	16.1	16.1
National	60.7	40.9	25.2	54.0	12.6	17.4	12.6	18.0	19.3

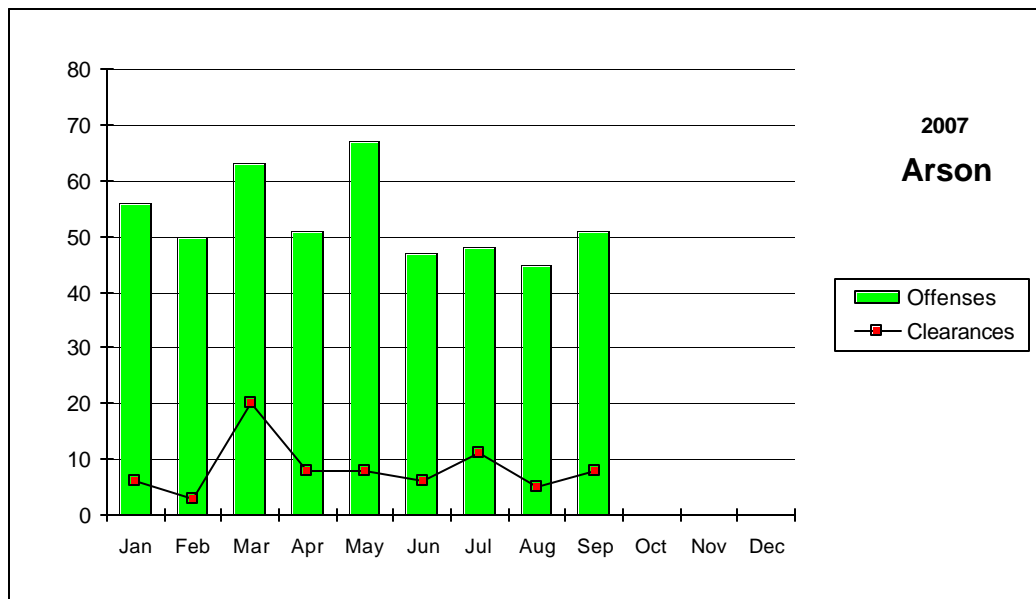
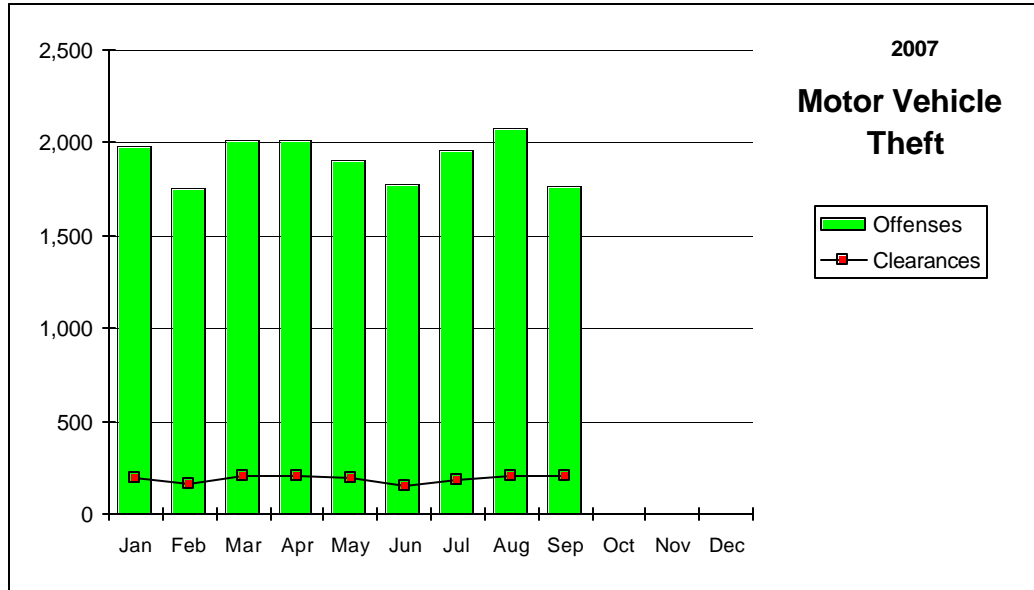
Nevada--Graphic Summary--UCR



Nevada--Graphic Summary--UCR



Nevada--Graphic Summary--UCR



Nevada--Murder--Incidence Level Variation--UCR

September 2007

Agency	September 2007 Offenses	September 2007 Cleared	2007 YTD Offenses	2007 YTD Cleared	September 2006 Offenses	September 2006 Cleared	2006 YTD Offenses	2006 YTD Cleared
Boulder	0	0	1	1	1	0	1	0
Carlin PD	0	0	0	0	0	0	0	0
Carson SO	0	0	1	2	0	0	2	1
Churchill SO	0	0	1	1	0	0	0	0
Clark Co Schl PD	0	0	0	0	0	0	0	0
Douglas SO	0	0	0	1	1	0	1	0
Elko PD	0	0	0	0	0	0	0	0
Elko SO	0	0	3	3	0	0	0	0
Esmeralda SO	0	0	0	0	0	0	0	0
Eureka SO	0	0	0	0	0	0	0	0
Fallon PD	0	0	0	0	0	0	0	0
Henderson PD	3	0	8	7	0	0	5	1
Humboldt SO	1	1	1	1	0	0	0	0
Lander SO	0	0	1	1	0	0	0	0
Lincoln SO	0	0	0	0	0	0	0	0
Lovelock PD	0	0	0	0	0	0	0	0
LV Fire Dept	0	0	0	0	0	0	0	0
LV Metro	5	3	93	70	18	10	113	80
Lyon SO	0	0	2	2	0	0	1	1
Mesquite PD	0	0	0	0	0	0	1	1
Mineral SO	0	0	0	0	0	0	0	0
NLVPD	0	0	20	6	2	2	16	7
Nye SO	0	0	2	2	0	0	2	3
Pershing SO	0	0	0	0	0	0	1	1
Reno PD	3	3	13	9	1	1	7	7
Sparks PD	1	1	4	4	1	2	3	4
Storey SO	0	0	0	0	0	0	0	0
Taxicab Authority	0	0	0	0	0	0	0	0
TMCC PD	0	0	0	0	0	0	0	0
UNLV PD	0	0	0	0	0	0	0	0
UNR PD	0	0	0	0	0	0	0	0
Washoe SO	0	0	2	1	0	0	4	0
Washoe Co Schl PD	0	0	0	0	0	0	0	0
Wendover PD	0	0	1	1	0	0	1	1
White Pine SO	0	0	0	0	0	0	0	0
Winnemucca PD	0	0	0	0	0	0	1	1
Yerington PD	0	0	0	0	0	0	0	0
TOTALS	13	8	153	112	24	15	159	108

Nevada--Rape--Incidence Level Variation-UCR

September 2007

Agency	September 2007 Offenses	September 2007 Cleared	2007 YTD Offenses	2007 YTD Cleared	September 2006 Offenses	September 2006 Cleared	2006 YTD Offenses	2006 YTD Cleared
Boulder	0	0	0	0	0	0	2	1
Carlin PD	0	0	2	0	0	0	0	0
Carson SO	0	0	4	1	2	0	2	0
Churchill SO	0	1	7	4	2	2	8	14
Clark Co Schl PD	0	0	4	0	0	0	2	0
Douglas SO	0	0	2	3	2	2	17	12
Elko PD	2	1	9	2	0	0	6	2
Elko SO	0	0	5	1	0	0	4	0
Esmeralda SO	0	0	0	0	0	0	0	0
Eureka SO	0	0	0	0	0	0	1	0
Fallon PD	0	0	2	0	0	0	0	0
Henderson PD	7	0	49	18	7	0	59	29
Humboldt SO	0	0	0	0	0	0	0	0
Lander SO	6	5	18	13	0	0	8	8
Lincoln SO	0	0	0	0	0	0	0	0
Lovelock PD	0	0	1	0	0	0	0	2
LV Fire Dept	0	0	0	0	0	0	0	0
LV Metro	64	8	532	77	58	5	542	92
Lyon SO	0	0	2	0	0	0	4	2
Mesquite PD	0	0	1	2	0	0	1	1
Mineral SO	1	1	5	4	0	0	1	1
NLVPD	2	1	38	8	4	1	41	17
Nye SO	2	2	15	14	2	1	7	6
Pershing SO	1	0	9	5	0	0	5	0
Reno PD	7	1	68	13	3	2	75	13
Sparks PD	3	1	25	9	1	0	33	11
Storey SO	0	0	3	1	0	0	0	0
Taxicab Authority	0	0	0	0	0	0	0	0
TMCC PD	0	0	0	0	0	0	0	0
UNLV PD	1	1	1	1	0	0	0	0
UNR PD	0	0	1	0	0	0	1	0
Washoe SO	0	0	0	0	0	0	0	0
Washoe Co Schl PD	0	0	0	0	0	0	0	0
Wendover PD	0	0	0	0	2	1	2	1
White Pine SO	0	0	1	1	2	0	3	1
Winnemucca PD	0	0	3	3	0	0	2	1
Yerington PD	0	0	0	0	0	0	0	0
TOTALS	96	22	807	180	85	14	826	214

Nevada--Robbery--Incidence Level Variation--UCR

September 2007

Agency	September 2007 Offenses	September 2007 Cleared	2007 YTD Offenses	2007 YTD Cleared	September 2006 Offenses	September 2006 Cleared	2006 YTD Offenses	2006 YTD Cleared
Boulder	0	0	2	1	1	0	3	1
Carlin PD	0	0	0	0	0	0	0	0
Carson SO	1	0	18	12	0	0	17	11
Churchill SO	0	0	2	2	0	0	0	0
Clark Co Schl PD	8	5	31	22	6	2	36	13
Douglas SO	0	0	1	0	0	0	1	0
Elko PD	0	0	6	2	1	0	7	2
Elko SO	0	0	1	1	0	0	0	0
Esmeralda SO	0	0	0	0	0	0	0	0
Eureka SO	0	0	1	0	0	0	0	0
Fallon PD	0	0	1	0	0	0	3	1
Henderson PD	18	5	160	50	20	4	172	32
Humboldt SO	0	0	1	1	0	0	1	1
Lander SO	0	0	1	0	0	0	1	0
Lincoln SO	0	0	0	0	0	0	0	0
Lovelock PD	0	0	0	0	0	0	0	0
LV Fire Dept	0	0	0	0	0	0	0	0
LV Metro	451	97	3,897	806	439	87	3,961	639
Lyon SO	0	0	7	0	0	0	4	2
Mesquite PD	0	0	2	0	1	0	2	1
Mineral SO	0	0	0	0	0	0	0	0
NLVPD	53	15	459	84	47	7	420	64
Nye SO	2	1	15	7	0	0	8	5
Pershing SO	0	0	0	0	0	0	0	0
Reno PD	42	10	378	116	57	15	411	110
Sparks PD	15	6	100	45	10	1	89	30
Storey SO	0	0	0	0	0	0	0	0
Taxicab Authority	2	0	14	1	5	0	36	36
TMCC PD	0	0	0	0	0	0	0	0
UNLV PD	0	0	0	0	0	0	0	0
UNR PD	1	0	3	0	0	0	0	0
Washoe SO	2	1	10	2	1	0	15	5
Washoe Co Schl PD	0	0	0	0	1	1	2	2
Wendover PD	0	0	2	1	0	0	2	1
White Pine SO	0	0	1	0	0	0	1	1
Winnemucca PD	0	0	3	1	1	0	3	2
Yerington PD	0	0	0	0	0	0	0	0
TOTALS	595	140	5,116	1,154	590	117	5,195	959

Nevada--Aggravated Assault--Incidence Level Variation--UCR

September 2007

Agency	September 2007 Offenses	September 2007 Cleared	2007 YTD Offenses	2007 YTD Cleared	September 2006 Offenses	September 2006 Cleared	2006 YTD Offenses	2006 YTD Cleared
Boulder	0	0	12	6	3	3	8	6
Carlin PD	0	0	17	16	1	0	22	20
Carson SO	8	8	139	89	20	12	123	82
Churchill SO	6	2	27	19	3	4	33	30
Clark Co Schl PD	10	6	57	28	6	4	39	19
Douglas SO	5	0	46	22	3	6	46	25
Elko PD	0	1	22	10	2	0	26	11
Elko SO	0	0	5	1	0	0	11	10
Esmeralda SO	0	0	1	1	2	2	3	3
Eureka SO	2	2	4	4	1	1	5	4
Fallon PD	1	1	17	14	4	2	9	7
Henderson PD	19	13	225	131	17	5	216	130
Humboldt SO	9	9	48	47	3	3	40	39
Lander SO	2	1	12	8	5	4	12	12
Lincoln SO	0	1	1	1	0	0	3	3
Lovelock PD	0	0	4	3	1	1	7	5
LV Fire Dept	0	0	0	0	0	0	0	0
LV Metro	642	246	5,926	2,426	639	237	5,129	1,663
Lyon SO	6	4	48	36	10	7	57	39
Mesquite PD	1	1	12	12	3	2	17	13
Mineral SO	1	1	8	8	0	0	6	6
NLVPD	100	48	835	382	86	39	751	338
Nye SO	6	6	55	47	6	6	81	69
Pershing SO	3	3	23	14	8	5	49	33
Reno PD	69	34	653	341	71	37	637	310
Sparks PD	12	6	153	99	17	14	174	120
Storey SO	0	0	12	6	0	0	0	0
Taxicab Authority	8	7	61	44	12	3	74	19
TMCC PD	0	0	0	0	0	0	0	0
UNLV PD	2	1	4	3	1	0	2	0
UNR PD	2	0	2	0	1	1	5	3
Washoe SO	15	4	163	88	12	9	125	74
Washoe Co Schl PD	0	0	6	5	1	1	7	7
Wendover PD	1	1	3	2	1	1	7	6
White Pine SO	1	1	7	6	3	2	19	17
Winnemucca PD	2	2	15	13	0	0	9	8
Yerington PD	0	0	0	0	0	0	0	0
TOTALS	933	409	8,623	3,932	942	411	7,752	3,131

Nevada--All Assaults--Incidence Level Variation--UCR

September 2007

Agency	September 2007 Offenses	September 2007 Cleared	2007 YTD Offenses	2007 YTD Cleared	September 2006 Offenses	September 2006 Cleared	2006 YTD Offenses	2006 YTD Cleared
Boulder	2	1	23	11	5	5	25	17
Carlin PD	0	0	20	19	1	0	23	20
Carson SO	49	24	641	326	86	43	628	317
Churchill SO	28	17	172	129	29	27	187	169
Clark Co Schl PD	92	55	656	390	79	49	530	284
Douglas SO	62	21	563	238	39	23	485	376
Elko PD	25	16	277	132	24	19	266	164
Elko SO	0	0	72	29	14	8	88	62
Esmeralda SO	0	0	2	2	2	2	5	5
Eureka SO	2	2	9	8	1	1	8	6
Fallon PD	26	16	208	162	19	13	152	110
Henderson PD	270	196	2,282	1,573	238	131	2,132	1,327
Humboldt SO	9	9	58	57	5	5	47	46
Lander SO	11	6	80	68	12	9	84	72
Lincoln SO	0	1	19	17	2	0	18	26
Lovelock PD	0	0	28	22	5	5	49	48
LV Fire Dept	0	0	0	0	0	0	0	0
LV Metro	2,674	1,020	22,806	9,615	2,409	967	20,539	6,705
Lyon SO	54	31	439	252	60	21	430	240
Mesquite PD	18	18	185	135	12	11	169	150
Mineral SO	5	4	44	41	5	5	51	51
NLVPD	323	185	2,914	1,534	339	200	2,629	1,382
Nye SO	54	49	491	460	60	60	526	507
Pershing SO	3	3	28	17	8	5	55	36
Reno PD	428	229	3,928	2,092	371	206	3,708	1,936
Sparks PD	122	106	1,127	830	111	87	1,081	700
Storey SO	0	0	32	20	6	4	31	19
Taxicab Authority	8	7	65	44	12	3	77	19
TMCC PD	0	0	3	3	0	0	2	1
UNLV PD	5	2	28	20	6	4	26	13
UNR PD	8	1	19	9	1	1	5	3
Washoe SO	103	64	809	508	94	44	753	418
Washoe Co Schl PD	0	0	7	6	6	6	65	65
Wendover PD	11	10	63	55	22	20	72	74
White Pine SO	1	1	40	28	5	4	75	67
Winnemucca PD	12	11	90	81	3	3	55	48
Yerington PD	3	4	33	35	4	4	27	26
TOTALS	4,408	2,109	38,261	18,968	4,095	1,995	35,103	15,509

Nevada--Burglary--Incidence Level Variation--UCR

September 2007

Agency	September 2007 Offenses	September 2007 Cleared	2007 YTD Offenses	2007 YTD Cleared	September 2006 Offenses	September 2006 Cleared	2006 YTD Offenses	2006 YTD Cleared
Boulder	6	0	62	5	7	0	78	8
Carlin PD	0	0	8	1	1	0	17	3
Carson SO	17	3	223	45	25	6	227	52
Churchill SO	11	0	99	31	6	1	82	27
Clark Co Schl PD	16	0	151	26	23	4	189	30
Douglas SO	14	2	163	23	8	3	171	44
Elko PD	9	3	72	11	10	2	114	19
Elko SO	0	0	46	4	7	2	78	13
Esmeralda SO	0	0	1	1	0	0	1	1
Eureka SO	2	2	8	4	0	0	7	1
Fallon PD	3	1	35	13	4	0	38	10
Henderson PD	155	14	1,346	214	148	21	1,151	154
Humboldt SO	3	0	23	8	0	0	9	4
Lander SO	2	1	38	10	1	1	36	26
Lincoln SO	3	0	4	0	0	1	5	5
Lovelock PD	0	0	10	7	2	3	13	12
LV Fire Dept	0	0	0	0	0	0	0	0
LV Metro	1,144	46	11,250	657	1,276	65	11,197	634
Lyon SO	19	4	183	16	15	0	150	27
Mesquite PD	1	0	26	7	1	0	9	3
Mineral SO	2	1	6	2	2	2	19	6
NLVPD	166	6	1,774	111	188	13	1,866	124
Nye SO	24	5	276	35	21	3	187	30
Pershing SO	2	0	16	3	6	2	32	5
Reno PD	142	11	1,390	133	167	15	1,486	121
Sparks PD	48	13	630	189	65	8	637	171
Storey SO	0	0	17	2	1	0	13	3
Taxicab Authority	1	0	2	0	0	0	0	0
TMCC PD	1	0	11	1	0	0	3	0
UNLV PD	4	0	40	1	8	0	47	2
UNR PD	1	0	18	2	1	0	7	1
Washoe SO	31	8	390	57	51	2	418	38
Washoe Co Schl PD	0	0	6	3	3	1	21	2
Wendover PD	3	3	26	6	1	0	40	11
White Pine SO	3	1	69	7	1	0	47	7
Winnemucca PD	0	0	27	9	1	1	25	17
Yerington PD	2	3	33	33	5	3	23	20
TOTALS	1,835	127	18,479	1,677	2,055	159	18,443	1,631

Nevada--Larceny--Incidence Level Variation--UCR

September 2007

Agency	September	September	2007 YTD	2007 YTD	September	September	2006 YTD	2006 YTD
	2007	2007			2006	2006		
	Offenses	Cleared	Offenses	Cleared	Offense	Cleared	Offenses	Cleared
Boulder	4	0	62	7	11	0	97	7
Carlin PD	0	0	5	0	1	0	9	2
Carson SO	56	13	541	108	75	16	609	137
Churchill SO	15	3	111	28	16	5	103	39
Clark Co Schl PD	86	18	728	109	62	8	605	86
Douglas SO	43	7	544	80	55	6	573	102
Elko PD	31	1	312	27	29	3	336	32
Elko SO	0	0	42	3	12	1	77	10
Esmeralda SO	0	0	2	0	0	0	4	4
Eureka SO	2	1	12	3	0	0	8	1
Fallon PD	34	6	229	46	27	4	243	40
Henderson PD	277	72	2,523	653	238	43	2,733	431
Humboldt SO	5	2	24	7	0	0	25	11
Lander SO	7	2	47	19	2	2	43	27
Lincoln SO	5	0	17	4	2	1	19	5
Lovelock PD	0	0	10	8	1	1	13	10
LV Fire Dept	0	0	0	0	0	0	0	0
LV Metro	2,149	342	20,757	3,713	2,122	370	19,983	3,769
Lyon SO	33	6	364	61	33	1	317	55
Mesquite PD	27	10	290	76	21	7	205	56
Mineral SO	1	0	9	0	1	0	14	3
NLVPD	273	48	2,707	441	290	50	2,528	387
Nye SO	26	10	372	124	40	15	344	104
Pershing SO	3	0	18	0	6	2	17	4
Reno PD	524	129	4,884	1,082	615	112	5,176	1,070
Sparks PD	170	51	1,854	440	196	22	1,542	210
Storey SO	0	0	30	2	1	0	31	3
Taxicab Authority	11	0	72	3	34	0	312	11
TMCC PD	1	0	6	0	1	0	11	0
UNLV PD	36	0	198	7	37	0	183	12
UNR PD	13	0	94	2	18	1	111	3
Washoe SO	63	10	701	87	71	6	618	54
Washoe Co Schl PD	0	0	92	25	18	5	132	39
Wendover PD	8	2	75	20	11	3	111	25
White Pine SO	4	0	36	7	6	3	88	28
Winnemucca PD	7	1	56	15	6	1	50	13
Yerington PD	1	2	11	11	3	2	8	6
TOTALS	3,915	736	37,835	7,218	4,061	690	37,278	6,796

Nevada--MV Theft--Incidence Level Variation--UCR

September 2007

Agency	September 2007				September 2006			
	Offenses	September 2007 Cleared	2007 YTD Offenses	2007 YTD Cleared	Offenses	September 2006 Cleared	2006 YTD Offenses	2006 YTD Cleared
Boulder	2	0	9	0	1	0	20	1
Carlin PD	0	0	0	0	2	0	5	1
Carson SO	6	2	60	18	11	2	89	28
Churchill SO	0	0	8	6	1	0	14	5
Clark Co Schl PD	6	3	41	17	2	0	39	10
Douglas SO	4	0	37	7	3	3	51	34
Elko PD	5	0	31	7	4	0	44	6
Elko SO	0	0	11	3	1	0	16	2
Esmeralda SO	0	0	0	0	0	0	1	1
Eureka SO	0	0	2	2	1	0	3	1
Fallon PD	3	1	15	3	0	0	23	8
Henderson PD	120	5	932	39	113	2	1,153	32
Humboldt SO	0	0	3	2	0	0	4	3
Lander SO	0	0	4	2	0	0	6	6
Lincoln SO	0	0	6	1	0	0	7	4
Lovelock PD	0	0	1	0	0	0	2	1
LV Fire Dept	0	0	0	0	0	0	0	0
LV Metro	1,327	163	12,869	1,259	1,352	138	15,143	1,399
Lyon SO	3	2	58	14	9	2	60	27
Mesquite PD	3	2	34	9	0	0	47	12
Mineral SO	1	0	4	1	0	0	4	2
NLVPD	146	9	1,677	70	164	8	1,936	80
Nye SO	3	1	120	29	13	4	140	62
Pershing SO	0	0	0	0	1	0	2	1
Reno PD	96	13	853	133	134	17	1,206	154
Sparks PD	16	4	266	47	43	3	333	60
Storey SO	0	0	5	0	0	0	2	0
Taxicab Authority	0	0	1	0	1	0	11	0
TMCC PD	0	0	0	0	0	0	0	0
UNLV PD	12	0	47	6	2	0	32	2
UNR PD	0	0	3	0	0	0	9	0
Washoe SO	17	1	191	41	22	1	166	38
Washoe Co Schl PD	0	0	0	0	0	0	0	0
Wendover PD	1	1	6	5	1	1	14	11
White Pine SO	0	0	5	2	1	0	23	10
Winnemucca PD	0	0	8	1	1	0	12	4
Yerington PD	0	0	0	0	0	0	0	0
TOTALS	1,771	207	17,307	1,724	1,883	181	20,617	2,005

Nevada--Arson--Incidence Level Variation--UCR

September 2007

Agency	September 2007 Offenses	September 2007 Cleared	2007 YTD Offenses	2007 YTD Cleared	September 2006 Offenses	September 2006 Cleared	2006 YTD Offenses	2006 YTD Cleared
Boulder	0	0	3	1	0	0	3	0
Carlin PD	0	0	1	1	0	0	0	0
Carson SO	0	0	20	11	0	0	6	3
Churchill SO	1	2	10	5	1	1	2	2
Clark Co Schl PD	2	1	44	8	9	5	67	22
Douglas SO	1	0	9	1	0	0	6	4
Elko PD	0	0	1	0	0	0	8	1
Elko SO	0	0	0	0	0	0	1	0
Esmeralda SO	1	0	2	1	0	0	0	0
Eureka SO	0	0	1	1	0	0	0	0
Fallon PD	0	0	6	1	0	0	0	0
Henderson PD	7	1	48	16	10	5	67	13
Humboldt SO	2	0	2	0	0	0	1	1
Lander SO	0	0	0	0	0	0	0	0
Lincoln SO	0	0	0	0	1	0	1	2
Lovelock PD	0	0	0	0	0	0	0	0
LV Fire Dept	8	2	52	9	6	2	59	10
LV Metro	18	0	189	0	23	0	247	34
Lyon SO	4	2	8	3	3	1	13	2
Mesquite PD	0	0	0	0	0	0	0	0
Mineral SO	0	0	0	0	0	0	1	1
NLVPD	4	0	30	5	4	0	46	6
Nye SO	0	0	17	5	1	0	27	21
Pershing SO	0	0	0	0	0	0	0	0
Reno PD	1	0	14	4	1	0	31	3
Sparks PD	1	0	18	4	3	0	17	4
Storey SO	0	0	1	0	0	0	0	0
Taxicab Authority	0	0	0	0	0	0	0	0
TMCC PD	0	0	0	0	0	0	0	0
UNLV PD	0	0	2	0	0	0	1	0
UNR PD	0	0	1	0	0	0	0	0
Washoe SO	1	0	3	0	1	0	9	1
Washoe CO Schl PD	0	0	8	3	1	0	15	2
Wendover PD	0	0	1	0	1	1	3	2
White Pine SO	0	0	0	0	1	0	1	0
Winnemucca PD	0	0	1	0	1	1	6	5
Yerington PD	0	0	0	0	0	0	0	0
TOTALS	51	8	492	79	67	16	638	139

State of Nevada

Hate Crimes Reports for September 2007

#	Agency	Date of Incident	UCR Offense	Location	Bias Motivation	Victim Type and Number	Offender Race and Number
1	NYE COUNTY SO	9/24/2007	DESTRUCTION/DAMAGE	CHURCH	ANTI-MORMON	RELIGIOUS ORG-1	UNKNOWN-00
2	LAS VEGAS METRO	9/9/2007	SIMPLE ASSAULT	CONV STORE	ANTI MALE HOMOSEX	INDIVIDUAL-1	WHITE-01
3	LAS VEGAS METRO	9/14/2007	DESTRUCTION/DAMAGE	RESIDENCE/HOME	ANTI-JEWISH	INDIVIDUAL-1	UNKNOWN-00
4	LAS VEGAS METRO	9/24/2007	AGGRAVATED ASSAULT	HIGHWAY/ROAD	ANTI-BLACK	INDIVIDUAL-1	WHITE/HISP-06
5	LAS VEGAS METRO	9/24/2007	SIMPLE ASSAULT	HIGHWAY/ROAD	ANTI-HISPANIC	INDIVIDUAL-2	BLACK-01
6	LAS VEGAS METRO	9/2/2007	AGGRAVATED ASSAULT	HIGHWAY/ROAD	ANTI-ISLAMIC	INDIVIDUAL-1	WHITE/HISP-01
7	RENO PD	9/6/2007	ROBBERY	OTHER	ANTI MALE HOMOSEX	INDIVIDUAL-1	WHITE-01

Stolen/Recovered Property Report

September 2007

Property Type	Boulder PD	Carlin PD	Carson SO	Churchill SO	Clark Co Schl PD	Douglas SO	Elko PD	Elko SO	Esmeralda SO
Currency									
Stolen	\$1,410	\$0	\$5,664	\$286	\$2,417	\$1,550	\$5,405	\$0	\$0
Recovered	\$0	\$0	\$0	\$0	\$0	\$0	\$0	\$0	\$0
% Recovered	0.0%	0.0%	0.0%	0.0%	0.0%	0.0%	0.0%	0.0%	0.0%
Jewelry									
Stolen	\$0	\$0	\$11,024	\$0	\$3,530	\$6,180	\$624	\$0	\$0
Recovered	\$0	\$0	\$80	\$0	\$0	\$0	\$0	\$0	\$0
% Recovered	0.0%	0.0%	0.7%	0.0%	0.0%	0.0%	0.0%	0.0%	0.0%
Clothing									
Stolen	\$0	\$0	\$1,000	\$130	\$455	\$5,918	\$317	\$0	\$0
Recovered	\$0	\$0	\$1,000	\$0	\$0	\$72	\$0	\$0	\$0
% Recovered	0.0%	0.0%	100.0%	0.0%	0.0%	1.2%	0.0%	0.0%	0.0%
Motor Vehicle									
Stolen	\$16,260	\$0	\$29,000	\$0	\$24,600	\$6,000	\$60,640	\$0	\$0
Recovered	\$0	\$0	\$25,000	\$0	\$3,600	\$2,500	\$87,000	\$0	\$0
% Recovered	0.0%	0.0%	86.2%	0.0%	14.6%	41.7%	143.5%	0.0%	0.0%
Office Equipment									
Stolen	\$2,400	\$0	\$6,955	\$0	\$5,355	\$25	\$1,100	\$0	\$0
Recovered	\$1,000	\$0	\$400	\$0	\$0	\$0	\$0	\$0	\$0
% Recovered	41.7%	0.0%	5.8%	0.0%	0.0%	0.0%	0.0%	0.0%	0.0%
TV, VCR, Camera, Etc.									
Stolen	\$0	\$0	\$3,997	\$1,100	\$3,424	\$6,815	\$198	\$0	\$0
Recovered	\$0	\$0	\$1,997	\$0	\$0	\$0	\$0	\$0	\$0
% Recovered	0.0%	0.0%	50.0%	0.0%	0.0%	0.0%	0.0%	0.0%	0.0%
Firearm									
Stolen	\$0	\$0	\$1,600	\$1,900	\$0	\$350	\$1,650	\$0	\$0
Recovered	\$0	\$0	\$0	\$400	\$0	\$0	\$0	\$0	\$0
% Recovered	0.0%	0.0%	0.0%	21.1%	0.0%	0.0%	0.0%	0.0%	0.0%
Household Goods									
Stolen	\$0	\$0	\$0	\$2,500	\$0	\$9,939	\$0	\$0	\$0
Recovered	\$0	\$0	\$0	\$0	\$0	\$0	\$0	\$0	\$0
% Recovered	0.0%	0.0%	0.0%	0.0%	0.0%	0.0%	0.0%	0.0%	0.0%
Consumable Goods									
Stolen	\$0	\$0	\$140	\$664	\$35	\$353	\$269	\$0	\$0
Recovered	\$0	\$0	\$59	\$75	\$0	\$101	\$0	\$0	\$0
% Recovered	0.0%	0.0%	42.1%	11.3%	0.0%	28.6%	0.0%	0.0%	0.0%
Livestock									
Stolen	\$0	\$0	\$0	\$0	\$0	\$0	\$0	\$0	\$0
Recovered	\$0	\$0	\$0	\$0	\$0	\$0	\$0	\$0	\$0
% Recovered	0.0%	0.0%	0.0%	0.0%	0.0%	0.0%	0.0%	0.0%	0.0%
Misc.									
Stolen	\$31,895	\$0	\$23,449	\$7,333	\$20,544	\$43,799	\$14,361	\$0	\$0
Recovered	\$8,200	\$0	\$234	\$325	\$500	\$5,224	\$9,900	\$0	\$0
% Recovered	25.7%	0.0%	1.0%	4.4%	2.4%	11.9%	68.9%	0.0%	0.0%
TOTALS									
Stolen	\$51,965	\$0	\$82,829	\$13,913	\$60,360	\$80,929	\$84,564	\$0	\$0
Recovered	\$9,200	\$0	\$28,770	\$800	\$4,100	\$7,897	\$96,900	\$0	\$0
% Recovered	17.7%	0.0%	34.7%	5.8%	6.8%	9.8%	114.6%	0.0%	0.0%

Stolen/Recovered Property Report

September

Property Type	Eureka SO	Fallon PD	Henderson PD	Humboldt SO	Lander SO	Las Vegas Metro	Lincoln SO	Lovelock PD	Lyon SO
Currency									
Stolen	\$0	\$430	\$42,125	\$4,742	\$500	\$1,209,393	\$1,132	\$0	\$4,150
Recovered	\$0	\$0	\$380	\$4,482	\$395	\$6,701	\$0	\$0	\$673
% Recovered	0.0%	0.0%	0.9%	94.5%	79.0%	0.6%	0.0%	0.0%	16.2%
Jewelry									
Stolen	\$0	\$200	\$450,750	\$0	\$0	\$2,505,781	\$130	\$0	\$11,735
Recovered	\$0	\$0	\$894	\$0	\$0	\$93,958	\$0	\$0	\$0
% Recovered	0.0%	0.0%	0.2%	0.0%	0.0%	3.7%	0.0%	0.0%	0.0%
Clothing									
Stolen	\$0	\$0	\$56,331	\$0	\$250	\$384,988	\$0	\$0	\$0
Recovered	\$0	\$0	\$2,081	\$0	\$0	\$27,051	\$0	\$0	\$0
% Recovered	0.0%	0.0%	3.7%	0.0%	0.0%	7.0%	0.0%	0.0%	0.0%
Motor Vehicle									
Stolen	\$0	\$14,500	\$1,496,670	\$0	\$0	\$3,321,467	\$0	\$0	\$18,700
Recovered	\$0	\$14,500	\$1,290,400	\$0	\$0	\$2,579,075	\$0	\$0	\$18,700
% Recovered	0.0%	100.0%	86.2%	0.0%	0.0%	77.6%	0.0%	0.0%	100.0%
Office Equipment									
Stolen	\$0	\$0	\$24,886	\$0	\$0	\$845,462	\$0	\$0	\$0
Recovered	\$0	\$0	\$0	\$0	\$0	\$3,941	\$0	\$0	\$0
% Recovered	0.0%	0.0%	0.0%	0.0%	0.0%	0.5%	0.0%	0.0%	0.0%
TV, VCR, Camera, Etc.									
Stolen	\$0	\$1,068	\$188,775	\$0	\$400	\$1,244,909	\$0	\$0	\$1,560
Recovered	\$0	\$168	\$5,508	\$0	\$0	\$99,206	\$0	\$0	\$0
% Recovered	0.0%	15.7%	2.9%	0.0%	0.0%	8.0%	0.0%	0.0%	0.0%
Firearm									
Stolen	\$0	\$0	\$17,527	\$0	\$596	\$72,819	\$739	\$0	\$2,000
Recovered	\$0	\$0	\$1,810	\$0	\$0	\$15,689	\$0	\$0	\$200
% Recovered	0.0%	0.0%	10.3%	0.0%	0.0%	21.5%	0.0%	0.0%	10.0%
Household Goods									
Stolen	\$0	\$0	\$69,555	\$20	\$0	\$247,769	\$420	\$0	\$3,800
Recovered	\$0	\$0	\$5,700	\$0	\$0	\$2,271	\$20	\$0	\$0
% Recovered	0.0%	0.0%	8.2%	0.0%	0.0%	0.9%	4.8%	0.0%	0.0%
Consumable Goods									
Stolen	\$2	\$11	\$5,928	\$210	\$0	\$162,698	\$0	\$0	\$325
Recovered	\$2	\$0	\$1,371	\$0	\$0	\$13,745	\$0	\$0	\$25
% Recovered	100.0%	0.0%	23.1%	0.0%	0.0%	8.4%	0.0%	0.0%	7.7%
Livestock									
Stolen	\$0	\$0	\$900	\$0	\$0	\$0	\$0	\$0	\$0
Recovered	\$0	\$0	\$900	\$0	\$0	\$0	\$0	\$0	\$0
% Recovered	0.0%	0.0%	100.0%	0.0%	0.0%	0.0%	0.0%	0.0%	0.0%
Misc.									
Stolen	\$9,816	\$6,042	\$325,733	\$1,950	\$6,702	\$2,087,426	\$13,646	\$0	\$28,364
Recovered	\$8	\$650	\$8,554	\$0	\$1,500	\$174,204	\$0	\$0	\$25,048
% Recovered	0.1%	10.8%	2.6%	0.0%	22.4%	8.3%	0.0%	0.0%	88.3%
TOTALS									
Stolen	\$9,818	\$22,251	\$2,679,180	\$6,922	\$8,448	\$12,082,712	\$16,067	\$0	\$70,634
Recovered	\$10	\$15,318	\$1,317,598	\$4,482	\$1,895	\$3,015,841	\$20	\$0	\$44,646
% Recovered	0.1%	68.8%	49.2%	64.8%	22.4%	25.0%	0.1%	0.0%	63.2%

Stolen/Recovered Property Report

September 2007

Property Type	Mesquite PD	Mineral SO	NLVPD	Nye SO	Pershing SO	Reno PD	Sparks PD	Storey SO	Taxicab	TMCC PD
Currency										
Stolen	\$1,615	\$150	\$56,679	\$6,154	\$300	\$71,822	\$25,171	\$0	\$1,465	\$0
Recovered	\$0	\$0	\$0	\$200	\$0	\$0	\$7	\$0	\$0	\$0
% Recovered	0.0%	0.0%	0.0%	3.2%	0.0%	0.0%	0.0%	0.0%	0.0%	0.0%
Jewelry										
Stolen	\$0	\$0	\$210,208	\$6,360	\$0	\$202,387	\$33,956	\$0	\$0	\$0
Recovered	\$0	\$0	\$0	\$6,360	\$0	\$8,125	\$2,068	\$0	\$0	\$0
% Recovered	0.0%	0.0%	0.0%	100.0%	0.0%	4.0%	6.1%	0.0%	0.0%	0.0%
Clothing										
Stolen	\$0	\$0	\$29,263	\$0	\$140	\$21,130	\$5,232	\$0	\$0	\$0
Recovered	\$0	\$0	\$2,668	\$0	\$0	\$4,162	\$1,704	\$0	\$0	\$0
% Recovered	0.0%	0.0%	9.1%	0.0%	0.0%	19.7%	32.6%	0.0%	0.0%	0.0%
Motor Vehicle										
Stolen	(\$18,500)	\$0	\$1,488,928	\$16,000	\$0	\$603,270	\$134,950	\$0	\$0	\$0
Recovered	\$1,500	\$0	\$1,317,996	\$4,000	\$0	\$344,149	\$169,147	\$0	\$0	\$0
% Recovered	-8.1%	0.0%	88.5%	25.0%	0.0%	57.0%	125.3%	0.0%	0.0%	0.0%
Office Equipment										
Stolen	\$0	\$0	\$770	\$29,448	\$0	\$59,878	\$21,467	\$0	\$0	\$0
Recovered	\$0	\$0	\$0	\$0	\$0	\$2,298	\$0	\$0	\$0	\$0
% Recovered	0.0%	0.0%	0.0%	0.0%	0.0%	3.8%	0.0%	0.0%	0.0%	0.0%
TV, VCR, Camera, Etc.										
Stolen	\$470	\$0	\$167,323	\$0	\$900	\$78,024	\$43,582	\$0	\$6,410	\$990
Recovered	\$350	\$0	\$1,908	\$0	\$0	\$2,785	\$1,982	\$0	\$0	\$0
% Recovered	74.5%	0.0%	1.1%	0.0%	0.0%	3.6%	4.5%	0.0%	0.0%	0.0%
Firearm										
Stolen	\$450	\$0	\$13,111	\$1,850	\$0	\$12,289	\$14,049	\$0	\$0	\$0
Recovered	\$0	\$0	\$0	\$0	\$0	\$2,000	\$2,327	\$0	\$0	\$0
% Recovered	0.0%	0.0%	0.0%	0.0%	0.0%	16.3%	16.6%	0.0%	0.0%	0.0%
Household Goods										
Stolen	\$825	\$0	\$30,289	\$22,047	\$0	\$9,941	\$52,596	\$0	\$0	\$0
Recovered	\$0	\$0	\$24	\$0	\$0	\$116	\$2,737	\$0	\$0	\$0
% Recovered	0.0%	0.0%	0.1%	0.0%	0.0%	1.2%	5.2%	0.0%	0.0%	0.0%
Consumable Goods										
Stolen	\$0	\$28	\$4,030	\$139	\$0	\$2,219	\$1,101	\$0	\$0	\$0
Recovered	\$0	\$0	\$445	\$9	\$0	\$847	\$249	\$0	\$0	\$0
% Recovered	0.0%	0.0%	11.0%	6.5%	0.0%	38.2%	22.6%	0.0%	0.0%	0.0%
Livestock										
Stolen	\$0	\$0	\$600	\$35	\$0	\$250	\$0	\$0	\$0	\$0
Recovered	\$0	\$0	\$0	\$0	\$0	\$0	\$0	\$0	\$0	\$0
% Recovered	0.0%	0.0%	0.0%	0.0%	0.0%	0.0%	0.0%	0.0%	0.0%	0.0%
Misc.										
Stolen	\$10,447	\$0	\$322,085	\$24,063	\$1,910	\$516,013	\$39,401	\$0	\$2,000	\$0
Recovered	\$2,245	\$0	\$2,582	\$1,079	\$2,099	\$3,177	\$8,839	\$0	\$0	\$0
% Recovered	21.5%	0.0%	0.8%	4.5%	109.9%	0.6%	22.4%	0.0%	0.0%	0.0%
TOTALS										
Stolen	(\$4,693)	\$178	\$2,323,286	\$106,096	\$3,250	\$1,577,223	\$371,505	\$0	\$9,875	\$990
Recovered	\$4,095	\$0	\$1,325,623	\$11,648	\$2,099	\$367,659	\$189,060	\$0	\$0	\$0
% Recovered	-87.3%	0.0%	57.1%	11.0%	64.6%	23.3%	50.9%	0.0%	0.0%	0.0%

Stolen/Recovered Property Report

September

Property Type	UNLV PD	UNR PD	Washoe SO	Washoe Co Schl PD	Wendover PD	White Pine SO	Winnemucca PD	Yerington PD	Total By Property
Currency									
Stolen	\$832	\$425	\$3,870	\$0	\$6,033	\$245	\$250	\$0	\$1,454,215
Recovered	\$0	\$0	\$0	\$0	\$5,573	\$0	\$0	\$0	\$18,411
% Recovered	0.0%	0.0%	0.0%	0.0%	92.4%	0.0%	0.0%	0.0%	1.3%
Jewelry									
Stolen	\$15,500	\$0	\$38,850	\$0	\$0	\$0	\$7	\$0	\$3,497,222
Recovered	\$0	\$0	\$0	\$0	\$0	\$0	\$7	\$0	\$111,492
% Recovered	0.0%	0.0%	0.0%	0.0%	0.0%	0.0%	100.0%	0.0%	3.2%
Clothing									
Stolen	\$753	\$300	\$0	\$0	\$250	\$0	\$983	\$0	\$507,440
Recovered	\$0	\$0	\$0	\$0	\$0	\$0	\$50	\$0	\$38,788
% Recovered	0.0%	0.0%	0.0%	0.0%	0.0%	0.0%	5.1%	0.0%	7.6%
Motor Vehicle									
Stolen	\$59,702	\$0	\$244,001	\$0	\$10,000	\$0	\$0	\$0	\$7,526,188
Recovered	\$11,500	\$0	\$48,401	\$0	\$10,000	\$0	\$0	\$0	\$5,927,468
% Recovered	19.3%	0.0%	19.8%	0.0%	100.0%	0.0%	0.0%	0.0%	78.8%
Office Equipment									
Stolen	\$0	\$0	\$35,460	\$0	\$250	\$0	\$0	\$0	\$1,033,456
Recovered	\$0	\$0	\$0	\$0	\$250	\$0	\$0	\$0	\$7,889
% Recovered	0.0%	0.0%	0.0%	0.0%	100.0%	0.0%	0.0%	0.0%	0.8%
TV, VCR, Camera, Etc.									
Stolen	\$20,647	\$0	\$11,305	\$0	\$650	\$1,500	\$100	\$0	\$1,784,147
Recovered	\$0	\$0	\$600	\$0	\$650	\$0	\$100	\$0	\$115,254
% Recovered	0.0%	0.0%	5.3%	0.0%	100.0%	0.0%	100.0%	0.0%	6.5%
Firearm									
Stolen	\$0	\$0	\$11,869	\$0	\$450	\$600	\$0	\$0	\$153,849
Recovered	\$0	\$0	\$0	\$0	\$450	\$0	\$0	\$0	\$22,876
% Recovered	0.0%	0.0%	0.0%	0.0%	100.0%	0.0%	0.0%	0.0%	14.9%
Household Goods									
Stolen	\$0	\$0	\$2,470	\$0	\$0	\$0	\$150	\$0	\$452,321
Recovered	\$0	\$0	\$0	\$0	\$0	\$0	\$0	\$0	\$10,868
% Recovered	0.0%	0.0%	0.0%	0.0%	0.0%	0.0%	0.0%	0.0%	2.4%
Consumable Goods									
Stolen	\$4	\$0	\$180	\$0	\$263	\$102	\$37	\$0	\$178,738
Recovered	\$0	\$0	\$0	\$0	\$0	\$0	\$0	\$0	\$16,928
% Recovered	0.0%	0.0%	0.0%	0.0%	0.0%	0.0%	0.0%	0.0%	9.5%
Livestock									
Stolen	\$0	\$0	\$0	\$0	\$0	\$0	\$0	\$0	\$1,785
Recovered	\$0	\$0	\$0	\$0	\$0	\$0	\$0	\$0	\$900
% Recovered	0.0%	0.0%	0.0%	0.0%	0.0%	0.0%	0.0%	0.0%	50.4%
Misc.									
Stolen	\$5,048	\$8,961	\$101,044	\$0	\$930	\$0	\$550	\$200	\$3,653,712
Recovered	\$500	\$3,371	\$2,906	\$0	\$400	\$0	\$50	\$0	\$261,595
% Recovered	9.9%	37.6%	2.9%	0.0%	0.0%	0.0%	9.1%	0.0%	7.2%
TOTALS									
Stolen	\$102,486	\$9,686	\$449,049	\$0	\$18,826	\$2,447	\$2,077	\$200	\$20,243,073
Recovered	\$12,000	\$3,371	\$51,907	\$0	\$17,323	\$0	\$207	\$0	\$6,532,469
% Recovered	11.7%	34.8%	11.6%	0.0%	92.0%	0.0%	10.0%	0.0%	32.3%

Nevada--Assaults on Officers by Agency--UCR

September 2007

Agency	September 2007 Offenses	September 2007 Cleared	2007 YTD Offenses	2007 YTD Cleared	September 2006 Offenses	September 2006 Cleared	2006 YTD Offenses	2006 YTD Cleared
Boulder	0	0	0	0	0	0	0	0
Carlin PD	0	0	1	0	0	0	1	0
Carson SO	0	0	14	14	1	1	6	5
Churchill SO	0	0	4	4	3	3	12	11
ClrkSchlDst PD	0	0	9	9	0	0	10	9
Douglas SO	1	1	16	15	0	0	7	7
Elko PD	0	0	9	8	0	0	7	4
Elko SO	0	0	0	0	0	0	0	0
Esmeralda SO	0	0	0	0	0	0	0	0
Eureka SO	0	0	0	0	0	0	2	2
Fallon PD	0	0	1	1	0	0	1	1
Henderson PD	4	4	20	20	2	2	7	5
Highway Patrol	2	2	15	15	5	5	29	27
Humboldt SO	0	0	1	1	0	0	0	0
Lander SO	0	0	0	0	0	0	0	0
Lincoln SO	0	0	0	0	0	0	0	0
Lovelock PD	0	0	0	0	0	0	0	0
LV Fire Dept	0	0	0	0	0	0	0	0
LV Metro	22	22	269	252	33	31	304	289
Lyon SO	0	0	4	4	0	0	8	8
Mesquite PD	0	0	0	0	0	0	0	0
Mineral SO	2	2	4	4	0	0	0	0
NV Div Investigations	0	0	0	0	0	0	0	0
NLVPD	2	2	39	37	5	5	23	21
Nye SO	0	0	9	2	2	2	10	5
Pershing SO	0	0	0	0	0	0	0	0
Reno PD	7	0	33	25	5	5	16	16
Sparks PD	0	0	12	12	2	2	7	6
Storey SO	0	0	0	0	0	0	0	0
Taxicab Authority	0	0	0	0	0	0	0	0
TMCC PD	0	0	0	0	0	0	0	0
UNLV PD	0	0	2	2	0	0	0	0
UNR PD	0	0	4	4	0	0	0	0
Washoe SO	0	0	0	0	0	0	0	0
Washoe Co Schl PD	0	0	2	2	0	0	0	0
Wendover PD	0	0	2	2	0	0	4	4
White Pine SO	0	0	1	1	1	1	2	1
Winnemucca PD	0	0	1	1	0	0	2	2
Yerington PD	0	0	0	0	0	0	0	0
TOTALS	40	33	472	435	59	57	458	423

Nevada -- Assaults by Agency/Weapon/Assignment -- UCR

September 2007

Table 16

Agency	Total Assaults	Number Cleared	Firearm	Knife / Cutting Device	Other Danger. Weapon	Hands, Fists, Feet, Etc.	2-Officer Vehicle	1-Officer Vehicle- Alone	1-Officer Vehicle- Assisted	Det./Spec. Assign. - Alone	Det./Spec. Assign. - Assisted	Other- Alone	Other- Assisted
Boulder City PD	0	0	0	0	0	0	0	0	0	0	0	0	0
Carlin PD	0	0	0	0	0	0	0	0	0	0	0	0	0
Carson City SO	0	0	0	0	0	0	0	0	0	0	0	0	0
Churchill Co SO	0	0	0	0	0	0	0	0	0	0	0	0	0
Clark School Dist PD	0	0	0	0	0	0	0	0	0	0	0	0	0
Douglas Co SO	1	1	0	0	0	1	0	1	0	0	0	0	0
Elko PD	0	0	0	0	0	0	0	0	0	0	0	0	0
Elko Co SO	0	0	0	0	0	0	0	0	0	0	0	0	0
Esmeralda Co SO	0	0	0	0	0	0	0	0	0	0	0	0	0
Eureka Co SO	0	0	0	0	0	0	0	0	0	0	0	0	0
Fallon PD	0	0	0	0	0	0	0	0	0	0	0	0	0
Henderson PD	4	4	0	0	0	4	4	0	0	0	0	0	0
NV Highway Patrol	2	2	0	0	0	2	0	2	0	0	0	0	0
Humboldt Co SO	0	0	0	0	0	0	0	0	0	0	0	0	0
Lander Co SO	0	0	0	0	0	0	0	0	0	0	0	0	0
Lincoln Co SO	0	0	0	0	0	0	0	0	0	0	0	0	0
Lovelock PD	0	0	0	0	0	0	0	0	0	0	0	0	0
Las Vegas Fire Dept	0	0	0	0	0	0	0	0	0	0	0	0	0
Las Vegas Metro PD	22	22	1	0	2	19	13	7	0	1	0	1	0
Lyon Co SO	0	0	0	0	0	0	0	0	0	0	0	0	0
Mesquite PD	0	0	0	0	0	0	0	0	0	0	0	0	0
Mineral Co SO	2	2	0	0	0	2	0	0	2	0	0	0	0
NV Div of Investigations	0	0	0	0	0	0	0	0	0	0	0	0	0
North Las Vegas PD	2	2	0	0	0	2	0	1	1	0	0	0	0
Nye Co SO	0	0	0	0	0	0	0	0	0	0	0	0	0
Pershing Co SO	0	0	0	0	0	0	0	0	0	0	0	0	0
Reno PD	7	0	0	0	1	6	7	0	0	0	0	0	0
Sparks PD	0	0	0	0	0	0	0	0	0	0	0	0	0
Storey Co SO	0	0	0	0	0	0	0	0	0	0	0	0	0
Taxi Authority	0	0	0	0	0	0	0	0	0	0	0	0	0
TMCC PD	0	0	0	0	0	0	0	0	0	0	0	0	0
UNLV PD	0	0	0	0	0	0	0	0	0	0	0	0	0
UNR PD	0	0	0	0	0	0	0	0	0	0	0	0	0
Washoe Co SO	0	0	0	0	0	0	0	0	0	0	0	0	0
Washoe Co School PD	0	0	0	0	0	0	0	0	0	0	0	0	0
West Wendover PD	0	0	0	0	0	0	0	0	0	0	0	0	0
White Pine Co SO	0	0	0	0	0	0	0	0	0	0	0	0	0
Winnemucca PD	0	0	0	0	0	0	0	0	0	0	0	0	0
Yerington PD	0	0	0	0	0	0	0	0	0	0	0	0	0
TOTALS	40	33	1	0	3	36	24	11	3	1	0	1	0

28

Nevada -- Officer Assaults by Activity/Weapon/Assignment -- UCR

September 2007

Table 17

ACTIVITY TYPE	Total Assaults	Number Cleared	Firearm	Knife / Cutting Device	Other Danger. Weapon	Hands, Fists, Feet, Etc.	2-Officer Vehicle	1-Officer Vehicle- Alone	1-Officer Vehicle- Assisted	Det./Spec. Assign.- Alone	Det./Spec. Assign.- Assisted	Other- Alone	Other- Assisted
DOMESTIC / OTHER DISTURBANCE	17	14	0	0	6	11	8	3	6	0	0	0	0
BURGLARY IN PROGRESS	4	4	2	0	0	2	4	0	0	0	0	0	0
ROBBERY IN PROGRESS	0	0	0	0	0	0	0	0	0	0	0	0	0
ATTEMPTING OTHER ARREST	4	4	0	0	2	2	0	3	1	0	0	0	0
CIVIL DISORDER	0	0	0	0	0	0	0	0	0	0	0	0	0
HANDLING PRISONER	3	3	0	0	0	3	0	0	2	0	0	0	1
INVEST. SUSP. PERSONS / CIRCUM.	3	3	0	0	1	2	1	1	0	0	0	0	1
AMBUSH-NO WARNING	0	0	0	0	0	0	0	0	0	0	0	0	0
MENTALLY DERANGED	2	2	0	0	1	1	0	0	2	0	0	0	0
TRAFFIC PURSUITS / STOPS	16	16	0	0	5	11	10	5	1	0	0	0	0
ALL OTHER	3	3	0	0	0	3	2	1	0	0	0	0	0
TOTALS	52	49	2	0	15	35	25	13	12	0	0	0	2

29

Nevada--Assaults with Injury/without Injury--UCR

September 2007

Agency	Total Assaults by weapon	Firearm		Cutting Instruments		Other Dangerous weapons		Hands, Fists, Feet, Etc.			
		With personal injury	Without personal injury	With personal injury	Without personal injury	With personal injury	Without personal injury	With personal injury	Without personal injury		
Boulder City PD	0	0	0	0	0	0	0	0	0		
Carlin PD	0	0	0	0	0	0	0	0	0		
Carson City SO	0	0	0	0	0	0	0	0	0		
Churchill Co SO	0	0	0	0	0	0	0	0	0		
Clark Co Schl Dist PD	0	0	0	0	0	0	0	0	0		
Douglas Co SO	1	1	0	0	0	0	0	0	0		
Elko Co SO	0	0	0	0	0	0	0	0	0		
Elko PD	0	0	0	0	0	0	0	0	0		
Esmeralda Co SO	0	0	0	0	0	0	0	0	0		
Eureka Co SO	0	0	0	0	0	0	0	0	0		
Fallon PD	0	0	0	0	0	0	0	0	0		
Henderson PD	4	3	1	0	0	0	0	0	0		
NV Highway Patrol	2	0	2	0	0	0	0	0	0		
Humboldt Co SO	0	0	0	0	0	0	0	0	0		
Lander Co SO	0	0	0	0	0	0	0	0	0		
Las Vegas Metro PD	22	15	7	0	1	0	0	1	1		
Lincoln Co SO	0	0	0	0	0	0	0	0	0		
Lovelock PD	0	0	0	0	0	0	0	0	0		
Lyon Co SO	0	0	0	0	0	0	0	0	0		
Mesquite PD	0	0	0	0	0	0	0	0	0		
Mineral Co SO	2	0	2	0	0	0	0	0	0		
NV Div Investigations	0	0	0	0	0	0	0	0	0		
North Las Vegas PD	2	0	2	0	0	0	0	0	0		
Nye Co SO	0	0	0	0	0	0	0	0	0		
Pershing Co SO	0	0	0	0	0	0	0	0	0		
Reno PD	7	0	7	0	0	0	1	0	6		
Sparks PD	0	0	0	0	0	0	0	0	0		
Storey Co SO	0	0	0	0	0	0	0	0	0		
Taxicab Authority	0	0	0	0	0	0	0	0	0		
TMCC PD	0	0	0	0	0	0	0	0	0		
UNLV PD	0	0	0	0	0	0	0	0	0		
UNR PD	0	0	0	0	0	0	0	0	0		
Washoe Co SO	0	0	0	0	0	0	0	0	0		
Washoe Co School Dist.	0	0	0	0	0	0	0	0	0		
West Wendover PD	0	0	0	0	0	0	0	0	0		
White Pine Co SO	0	0	0	0	0	0	0	0	0		
Winnemucca PD	0	0	0	0	0	0	0	0	0		
Yerington PD	0	0	0	0	0	0	0	0	0		
Totals	40	19	21	0	1	0	1	1	7	18	12

Nevada--Time of Assaults on Officers--UCR

September 2007

Agency	12:01- 2:00 AM	2:00- 4:00 AM	4:00- 6:00 AM	6:00- 8:00 AM	8:00- 10:00 AM	10:00- 12:00 AM	12:01- 2:00 PM	2:00- 4:00 PM	4:00- 6:00 PM	6:00- 8:00 PM	8:00- 10:00 PM	10:00- 12:00 PM
Boulder City PD	0	0	0	0	0	0	0	0	0	0	0	0
Carlin PD	0	0	0	0	0	0	0	0	0	0	0	0
Carson City SO	0	0	0	0	0	0	0	0	0	0	0	0
Churchill Co SO	0	0	0	0	0	0	0	0	0	0	0	0
Clark Co Schl Dist PD	0	0	0	0	0	0	0	0	0	0	0	0
Douglas Co SO	0	0	0	0	0	0	1	0	0	0	0	0
Elko Co SO	0	0	0	0	0	0	0	0	0	0	0	0
Elko PD	0	0	0	0	0	0	0	0	0	0	0	0
Esmeralda Co SO	0	0	0	0	0	0	0	0	0	0	0	0
Eureka Co SO	0	0	0	0	0	0	0	0	0	0	0	0
Fallon PD	0	0	0	0	0	0	0	0	0	0	0	0
Henderson PD	1	0	0	0	0	0	0	0	0	3	0	0
Highway Patrol	1	0	0	0	0	0	1	0	0	0	0	0
Humboldt Co SO	0	0	0	0	0	0	0	0	0	0	0	0
Lander Co SO	0	0	0	0	0	0	0	0	0	0	0	0
Las Vegas Metro PD	0	3	0	5	2	3	1	1	0	0	4	3
Lincoln Co SO	0	0	0	0	0	0	0	0	0	0	0	0
Lovelock PD	0	0	0	0	0	0	0	0	0	0	0	0
Lyon Co SO	0	0	0	0	0	0	0	0	0	0	0	0
Mesquite PD	0	0	0	0	0	0	0	0	0	0	0	0
Mineral Co SO	0	0	0	0	0	0	0	1	0	0	1	0
NV Div Investigations	0	0	0	0	0	0	0	0	0	0	0	0
North LV PD	0	0	0	0	0	0	0	2	0	0	0	0
Nye Co SO	0	0	0	0	0	0	0	0	0	0	0	0
Pershing Co SO	0	0	0	0	0	0	0	0	0	0	0	0
Reno PD	1	0	3	0	0	0	0	0	2	1	0	0
Sparks PD	0	0	0	0	0	0	0	0	0	0	0	0
Storey Co SO	0	0	0	0	0	0	0	0	0	0	0	0
Taxicab Authority	0	0	0	0	0	0	0	0	0	0	0	0
TMCC PD	0	0	0	0	0	0	0	0	0	0	0	0
UNLV PD	0	0	0	0	0	0	0	0	0	0	0	0
UNR PD	0	0	0	0	0	0	0	0	0	0	0	0
Washoe Co SO	0	0	0	0	0	0	0	0	0	0	0	0
Washoe Co Schl PD	0	0	0	0	0	0	0	0	0	0	0	0
West Wendover PD	0	0	0	0	0	0	0	0	0	0	0	0
White Pine Co SO	0	0	0	0	0	0	0	0	0	0	0	0
Winnemucca PD	0	0	0	0	0	0	0	0	0	0	0	0
Yerington PD	0	0	0	0	0	0	0	0	0	0	0	0
Totals	3	3	3	5	2	3	3	4	2	4	5	3

AGE, RACE AND SEX OF PERSONS CHARGED

18 Years of Age and over

September 2007

CLASSIFICATION OF OFFENSES	SEX																Total Over 18	RACE					
		18	19	20	21	22	23	24	25-29	30-34	35-39	40-44	45-49	50-54	55-59	60-64		over 65	White	Black	American Indian or Alaskan Native	Asian or Pacific Islander	
Murder and Nonnegligent Manslaughter	01a	Male	1	1	1			1	1	1	2	1		1		1			11				
		Female																	0	9	2		
Manslaughter by Negligence	01b	Male																	0				
		Female																	0				
Forcible Rape	02	Male	1	1	3	1	1				4	5	2	2					20				
		Female																	0	19			1
Robbery	03	Male	8	7	5	6	8	8	1	20	12	11	13	6	2		1		108				
		Female	2		2		1			1	1	3	1	1					12	68	50	1	2
Aggravated Assault (Return A-4a-d)	04	Male	7	10	13	9	6	7	9	47	36	22	22	19	10	5	2	1	225				
		Female	1	4	3	1		3	1	13	6	8	6	4	5	1			56	197	80	2	2
Burglary--Breaking or Entering	05	Male	9	10	4	9	7	5	2	21	15	22	9	7	6	4	2		132				
		Female	4	1		3		1		6	5	2	1	3	1		1	2	30	129	22	7	3
Larceny--Theft (except Motor Vehicle Theft)	06	Male	26	21	24	18	16	19	26	69	44	56	69	50	21	8	5	3	475				
		Female	11	16	9	11	9	15	6	37	25	21	21	19	10		3	2	215	548	120	4	18
Motor Vehicle Theft	07	Male	3	4	3	9	3	6	3	23	20	11	13	5	1				104				
		Female	1	1	1	1			1	7	3	4	2						20	96	22		6
Other Assaults (Return A-4e)	08	Male	24	37	24	38	37	46	39	192	144	139	123	98	57	20	17	11	1046				
		Female	12	18	15	9	23	17	20	74	46	53	39	39	13	3	4	6	391	1077	287	14	59
Arson	09	Male				1					1	1	1	1					4	7	1		
		Female									1	1	1	1					4				
Forgery & Counterfeiting	10	Male	1	1	1	1	2	4	7	12	11	12	6	2	3	1	1		65				
		Female	2	1	1	1	3	1	1	3	7	9	3	1		1			33	64	28	1	7
Fraud	11	Male	2	3	3	2	2	9	2	20	13	8	19	10	7	3	2	1	106				
		Female	3	4	1	2	1	1	1	11	9	5	5	7	3	2	1	1	56	127	25		10
Embezzlement	12	Male	1	1	1	2				2	3	2	2	1	1				16	27	1		4
Stolen Property; Buying, Receiving, Possessing	13	Male	3	1	1	4	5	5	4	23	15	7	8	11	7	1		3	98				
		Female	1	1	2	1	2	1	1	3	3	1	1	1				1	14	98	12	1	1
Vandalism	14	Male	14	8	11	5	8	3	5	16	5	10	2	8	4	3	1	1	104				
		Female				1	4	2	1	1	3	5	2	1					20	104	16	1	3
Weapons; Carrying, Possessing, etc.	15	Male	8	9	13	8	5	4	10	24	19	18	14	10	7	6	2	1	158				
		Female	1		2			2		6	1	1	2	3	2				20	131	41	1	5
Prostitution and Commercialized Vice	16	Male	4		3	2	4	5	6	32	21	12	19	15	7	3	4	2	139				
		Female	23	22	22	32	25	22	8	42	30	27	21	14	2	2	1	1	294	238	163	6	26
Sex Offenses (except Forcible Rape and Prostitution)	17	Male	7	2	2	5	3	3	2	13	8	11	14	17	15	6	3	3	114				
		Female		2		1	1			1		1	1	2					9	102	17	2	2
Drug Abuse Violations	18	Male	41	54	58	59	54	65	45	174	119	110	101	42	32	22	7	0	983				
		Female	7	9	10	15	10	8	9	34	27	29	15	15	11	0	1	0	200	786	368	6	22
(1) Sale/Manufacturing	180	Male	11	11	12	13	11	13	6	49	25	23	26	12	2	6	2	0	222				
Subtotal		Female	0	3	2	6	3	2	1	6	3	7	1	3	3	0	0	0	40	174	81	3	4
Opium or Cocaine and Their Derivatives (Morphine, Heroin, Codeine)	a	Male	2	3	4	5	4	7	1	15	12	13	12	5		2	1		86				
		Female		1	1	2	1	1		2		2		1					11	61	33		3
Marijuana	b	Male	5	3	3	2	3	3	1	12	6	3	1			1			43				
		Female		1	1	4	1					2							8	21	28	1	1
Synthetic Narcotics--Manufactured Narcotics Which Cause True Drug Addiction (Demerol, Methadone)	c	Male	2	1	1	2	2	2	1	11	4	3	8	4	2	2	1		46				
		Female									1	1			2				4	44	6		
Other Dangerous Non-Narcotic Drugs (Barbiturates, Benzadrine)	d	Male	2	4	4	4	2	1	3	11	3	4	5	3		1			47				
		Female		2			1	1	1	4	2	2	1	2	1				17	48	14	2	

CLASSIFICATION OF OFFENSES	SEX																	Total Over 18	RACE				
		18	19	20	21	22	23	24	25-29	30-34	35-39	40-44	45-49	50-54	55-59	60-64	over 65		White	Black	American Indian or Alaskan Native	Asian or Pacific Islander	
(2) Possession - Subtotal	185	Male	30	43	46	46	43	52	39	125	94	87	75	30	30	16	5	0	761	612	287	3	18
Opium or Cocaine and Their Derivatives (Morphine, Heroin, Codeine)	e	Female	7	6	8	9	7	6	8	28	24	22	14	12	8	0	1	0	160	64	64	1	
Marijuana	f	Male	1	3	1	4	7	6	5	18	13	15	13	5	7	6	2		106				
Synthetic Narcotics-Manufactured Narcotics Which Cause True Drug Addiction (Demerol, Methadone)	g	Female	2	2	5	4	4	4	4	4	3	4	2	2					23				
Other Dangerous Non-Narcotic Drugs (Barbiturates, Benzedrine)	h	Male	28	32	31	29	25	34	29	72	49	29	33	15	9	4	1		420	299	176	1	8
		Female	4	2	10	5	7	8	1	26	24	33	21	8	9	2	1		158				
Gambling Total	19	Male	2	1	2	2	1	2	5	9	7	3	7	5					46	172	24	1	7
Bookmaking (Horses and Sports Book)	a	Female	6	4	8	4	4	4	9	8	10	8	2	5	4	1			77	77	23		3
Numbers and Lottery	b	Male	1	1	1	1	1	3	2	4	2	2	7	2					27				
		Female	0	3	0	0	0	0	0	1	0	0	0	0	0	0	0	0	4				
All Other Gambling	c	Male	0	0	0	0	0	0	0	0	0	0	0	0	0	0	0	0	0	2	0	0	2
Offenses Against Family and Children	20	Female																	0				
Driving Under the Influence	21	Male	11	7	9	6	6	3	2	13	16	9	12	6	1	1			102	146	17	1	6
Liquor Laws	22	Female	5	2	3		3	3	3	9	12	12	8	5	2			1	68				
Drunkenness	23	Male	19	29	23	22	43	46	50	195	125	136	95	90	71	30	19	11	1004	1082	88	16	26
Disorderly Conduct	24	Female	1	6	4	11	8	10	3	39	31	16	25	31	12	4	5	3	209	602	71	21	23
Vagrancy	25	Male	79	82	66	18	9	5	5	48	30	38	69	70	59	22	7	4	611				
All Other Offenses (except Traffic) Total	26	Female	21	14	24	4	6	1	2	3	3	8	10	6	1	2		1	106	6			
Suspicion	27	Male					1		2	1		1			1			6					
GRAND TOTAL		Female	5	4	6	4	5	10	7	25	14	13	14	26	12	4	7	3	159				
		Male	3	2		1	1	2	3	4	2	5	5	1	5		1		35	163	26	2	3
		Female	5	1	1	4	2	2	3	16	21	25	36	54	36	17	7	3	233				
		Male	1	4	5	1		1	3	2	2	3	1	10	3	1			37	226	39	3	2
		Female	97	113	99	122	136	123	114	514	421	415	489	414	288	109	48	37	3539	3227	1335	44	108
		Male	22	50	35	61	78	44	49	207	138	152	133	112	67	18	3	7	1176				
		Female																	0				
		Male																	0				
		Female																	0				
		Male	490	567	516	512	540	513	455	2009	1476	1460	1456	1242	785	302	155	109	12587	9281	2831	133	341

Uniform Crime Reporting
Records & Identification Bureau
Department of Public Safety
808 west Nye Lane
Carson City NV 89703

CLASSIFICATION OF OFFENSES									RACE			
									White	Black	American Indian or Alaskan Native	Asian or Pacific Islander
SEX	Under 10	10-12	13-14	15	16	17	Total Under 18					
Gambling Total 19	Male	0	0	0	0	0	0	0	0	0	0	0
	Female	0	0	0	0	0	0	0	0	0	0	0
Bookmaking (Horses and Sports Book) a	Male							0				
	Female							0				
Numbers and Lottery b	Male							0				
	Female							0				
All Other Gambling c	Male							0				
	Female							0				
Offenses Against Family and Children 20	Male		2	1			1	4				
	Female			1	1	1	2	5	9			
Driving Under the Influence 21	Male					1	4	5				
	Female				1	2	3	8				
Liquor Laws 22	Male			1	16	24	63	104				
	Female		1	11	9	12	28	61	141	2	2	20
Drunkenness 23	Male				1	2	1	4				
	Female			2	2	1	1	4	7	1		
Disorderly Conduct 24	Male		14	18	16	23	13	84				
	Female	1	1	7	14	10	5	38	61	57		4
Vagrancy 25	Male							0				
	Female							0				
All Other Offenses (except Traffic) Total 26	Male	1	2	24	25	53	44	149				
	Female		4	14	13	7	15	53	165	30	1	6
Suspicion 27	Male				1			1				
	Female							0	1			
Curfew and Loitering Law Violati 28	Male		5	39	33	49	72	198				
	Female		1	17	13	28	38	97	208	73	2	12
Runaway 29	Male			9	11	21	7	48				
	Female		3	16	17	9	14	59	97	7	3	
GRAND TOTAL		12	70	347	329	410	523	1691	1257	360	13	59

Uniform Crime Reporting
Records & Identification Bureau
Department of Public Safety
808 West Nye Lane
Carson City NV 89703



Nevada UCR *Footnotes / Exceptions

September 2007

Table 1

--Nevada figures are annualized projections.

--"Assault" does not include simple assaults to allow direct comparison between the Nevada rate and the National rate for this Index offense. See Table 8 for a count of all assaults.

Table 2

--The LV Fire Department reports "Arson" offenses for the City of Las Vegas. The population figure for this agency represents jurisdiction and is not added to the county total. Similarly, the School District Police Departments in Clark and Washoe Counties are not added to county population estimates as they represent persons served (student enrollment plus staff.)

--Assault data in this table includes ALL assaults (aggravated and simple) reported for the current month.

--County crime rates are calculated following subtraction of populations of jurisdictions failing to report.

Table 3

-- In the "Nevada vs National Index Crime and Clearance Rates" sections, the "Assaults" numbers do not include simple assaults following FBI guidelines. Therefore, they may be compared directly to National rates.

-- National crime rate figures are the latest available for comparative use (2005). Nevada figures are annualized projections.

Table 13

--At various times, property values recovered will exceed values stolen for the current reporting period.

General Notes:

- The following agencies was unable to submit reports for this month:

- Carlin Police Department
- Elko County Sheriff Office
- Lovelock Police Department
- Storey County Sheriff
- Washoe County School Police Department

-- Any late reports not submitted in time for this publication will be incorporated in to the year-to-date totals in subsequent reports.