



UNIFORM CRIME REPORTING PROGRAM
UCR STATISTICAL DATA VERIFICATION FORM

As an agency administrator or designee for the _____, I have
(Name of Agency)
reviewed the UCR monthly statistics for **December 2006** which includes all UCR data submitted year to date. Based upon my or my designee's review and validation of same, I find that:

All data contained in the report for my agency is accurate and complete and may be released and made part of UCR publications for future distribution to the public and other interested UCR data subscribers.

Data contained in the report is inaccurate or incomplete and may not be published or released at this time. (If this choice is selected, please provide the reason in the space provided below.)

Reason: _____

The corrected data will be supplied to the UCR Program by: _____.
(Date)

This document must be signed and mailed to the Uniform Crime Reporting Program, 808 W. Nye Lane, Carson City, Nevada 89703 or faxed to (775) 684-6266 by **April 9, 2007**.

Signature of Agency Administrator (or designee)

Name/Title of Agency Administrator (print or type)

Agency's Name/Location

Date



Disclaimer: The following information is preliminary and cannot be certified until it is published in the annual report, Crime and Justice in Nevada, which will be available after July 1, 2007.



Monthly Report



**December
2006**



**Phil Galeoto, Director
Department of Public Safety**

**Capt Philip K. O'Neill, Division Chief
Records and Identification Bureau**

**Josh Porter, Statistician II
Pam Sebring, Administrative Assistant IV
Sherri Sharp, Administrative Assistant II**

**Prepared by:
Records and Identification Bureau
Uniform Crime Reporting
808 W. Nye Lane
Carson City, Nevada 89703
(775) 684-6262**



Nevada UCR Definitions / Explanations

Uniform Crime Reporting Program

The UCR program is a nationwide, cooperative, statistical effort by over 17,000 city, county and state law enforcement agencies that voluntarily report data on crimes brought to their attention. Law enforcement agencies active in the national program represent 95% of the total population of the United States. While the program's primary objective is to generate a reliable set of crime statistics for use in law enforcement administration, operation and management, its data has over the years become one of the country's leading social indicators.

In Nevada, 39 agencies are currently reporting UCR data to the statewide program representing nearly 99% of its population. Rather than submitting directly to the FBI, local agencies must submit crime data to the state UCR Repository, which compiles, analyzes and submits copies of the reports to the FBI. The Nevada UCR Program prides itself on its responsiveness to local contributing agencies that previously received limited feedback for their efforts. The Nevada program is also responsible for producing and distributing periodic reports of the information contained in its database. As its database has grown, the program's utility has become even more apparent.

Eight offenses serve as an index for gauging fluctuations in overall volumes and rates of crime. Known collectively as the " Crime Index, " these offenses include *the violent crimes of murder, rape, robbery and assault and the property crimes of burglary, larceny, motor vehicle theft and arson*. These offenses were selected as a grouped measuring device because they represent the most common crime problems. They are all serious crimes; either by their very nature or due to the volume and frequency with which they occur.

Index Crimes Definitions

Murder and Non-negligent Manslaughter

Murder and non negligent manslaughter, as defined in the Uniform Crime Reporting Program, is the willful (non-negligent) killing of a human being by another.

The classification of this offense, as for all other Crime Index offenses, is based solely on police investigation as opposed to the determination of a court, medical examiner, coroner, jury or other judicial entity. Not included in the count for this offense classification are deaths caused by negligence, suicide or accident, justifiable homicides and attempts to murder or assaults to murder. These are scored as aggravated assaults.



Nevada UCR Definitions / Explanations

Forcible Rape

Forcible rape, as defined in the program, is the carnal knowledge of a female forcibly and against her will. Assaults or attempts to commit rape by force or threat of force are also included; however, statutory rape (without force) and other sex offenses are excluded.

Robbery

Robbery is the taking or attempting to take anything of value from the care, custody or control of a person or persons by force or threat of force or violence and/or by putting the victim in fear.

Aggravated Assault

Aggravated assault is an unlawful attack by one person upon another for the purpose of inflicting severe or aggravated bodily injury. This type of assault is usually accompanied by the use of a weapon or by means likely to produce death or great bodily harm. Attempts are included since it is not necessary that an injury result when a gun, knife or other weapon is used which could and probably would result in serious personal injury if the crime were successfully completed

Burglary

The Uniform Crime Reporting Program defines burglary as the unlawful entry of a structure to commit a felony or theft. The use of force to gain entry is not required to classify an offense as burglary. Burglary in this program is categorized into three sub classifications: forcible entry, unlawful entry where no force is used and attempted forcible entry.

Larceny-Theft

Larceny-theft is the unlawful taking, carrying, leading, or riding away of property from the possession or constructive possession of another. It includes crimes such as shoplifting, pocket picking, purse-snatching, thefts from motor vehicles, thefts of motor vehicle parts and accessories, and bicycle thefts, etc., in which no use of force, violence, or fraud occurs. In the UCR Program, this crime category does not include embezzlement, "con" games, forgery, and worthless checks. Motor vehicle theft is also excluded from this category inasmuch as it is a separate Crime Index offense.

Motor Vehicle Theft

Defined as the theft or attempted theft of a motor vehicle, this offense category includes the stealing of automobiles, trucks, buses, motorcycles, motor scooters, snowmobiles, etc. The definition excludes the taking of a motor vehicle for temporary use by those persons having lawful access.



Nevada UCR Definitions / Explanations

Arson

Arson is defined by the Uniform Crime Reporting Program as any willful or malicious burning or attempt to burn, with or without intent to defraud, a dwelling house, public building, a motor vehicle or aircraft, personal property of another, etc. Only fires determined through investigation to have been willfully or maliciously set are classified as arsons. Fires of suspicious or unknown origins are excluded.

Population Estimates

State, county and incorporated city population estimates are prepared and reviewed prior to the end of each calendar year for certification by the governor by March 1. The Nevada Department of Taxation and Nevada State Demographer, Bureau of Business and Economic Research, College of Business Administration, University of Nevada, Reno, prepares these estimates.

Crime Rates

Crime rates involve the number of Index Crimes per unit of population, usually per 100,000 persons. Because Nevada has such a low population, a rate per 1,000 persons is used to reflect a more realistic volume. No attempt is made to incorporate transient populations or other factors that contribute to the ratio and types of crime in given areas. Any effort to make comparisons of crime rates between areas should be tempered by these population and environmental variables.

Crime rates are one of the most meaningful statistical elements. Computation of crime rates per 1,000 population is achieved by dividing the community's population by 1,000, then dividing the number of offenses in each class by that number. The answer is the number of offenses per 1,000 population and is the crime rate for that particular offense. In Table 2, the County Total Crime Rate is computed after subtracting the population figure for all non-reporting agencies for the current month.

The index offense "Aggravated Assault" is an item of special interest to users of Nevada's UCR report. In Tables 1 & 3, where Nevada and National crime rates are compared, "simple assaults" are subtracted from the total of all assaults following FBI UCR rules, thus allowing for direct comparison. However, total assaults (simple and aggravated) are also presented in the Nevada report. This is because the Nevada UCR staff believes this figure is an important indicator of risk for citizens and it presents a more balanced picture of this portion of the crime index to law enforcement personnel.

The Federal Bureau of Investigation, Uniform Crime Reporting Section, publishes national rates.

Clearance Rates

The percentage of crimes cleared is obtained by dividing the number of offenses cleared by the number of offenses known. This number is then multiplied by 100.

Nevada--Statewide Summary--UCR Index Crimes

December 2006

Offense	Crimes this Month	# Cleared this Month	% Cleared this Month	Crimes this YTD	# Cleared this YTD	% Cleared this YTD	December Crimes 2005	December Cleared 2005	% December Cleared 2005	2006 NV Rate / 1,000 (Proj) *	2006 NV Rate / 1,000	2005 Natl. Rate / 1,000
Murder	17	11	65	229	155	68	23	13	57	0.09	0.08	0.06
Rape	69	20	29	1,084	272	25	62	16	26	0.43	0.42	0.32
Robbery	592	126	21	7,026	1,270	18	527	82	16	2.79	2.14	1.41
Assault *	760	303	40	10,200	4,145	41	712	242	34	4.05	3.63	2.91
Burglary	2,166	189	9	24,815	2,286	9	2,014	363	18	9.85	10.07	7.27
Larceny	4,392	933	21	50,244	9,405	19	4,381	888	20	19.95	22.83	22.86
MV Theft	2,102	188	9	26,962	2,572	10	2,499	280	11	10.70	9.86	4.17
Arson	61	7	11	801	164	20	68	5	7	0.32	0.30	0.27
Total	10,159	1,777	17	121,361	20,269	17	10,286	1,889	18	48.18	49.33	39.27

* The projected Crime Rate for Assaults is computed after subtracting Simple Assaults from the total for all Assaults following FBI guidelines. Therefore, this rate may be compared directly to the National Rate. See Table 3 and the "Footnotes/Exceptions page for further information.

Nevada UCR - - Monthly Crime/ Clearance Summary - - All Crimes

Contributing Agency	Est. Pop	Murder		Rape		Robbery		Assault		Burglary		Larceny		MV Theft		Arson		Total Crimes	Crime Rate	Clearances	Clearance Rate
Carson County																		December 2006			
Carson SO	57,104	0	0	0	0	2	1	53	27	21	2	82	15	17	7	1	0	176	3.08	52	29.5%
County Total	57,104	0	0	0	0	2	1	53	27	21	2	82	15	17	7	1	0	176	3.08	52	29.5%
Churchill County																					
Churchill SO	18,246	0	0	0	0	0	0	17	14	22	13	22	7	6	0	0	0	67	3.67	34	50.7%
Fallon PD	8,339	0	0	0	0	1	0	24	13	10	3	46	3	1	1	0	0	82	9.83	20	24.4%
County Total	26,585	0	0	0	0	1	0	41	27	32	16	68	10	7	1	0	0	149	5.60	54	36.2%
Clark County																					
Boulder PD	15,203	0	0	0	0	2	0	6	6	6	2	9	0	2	0	0	0	25	1.64	8	32.0%
Clark Co. Schools P	312,995	0	0	0	0	2	1	55	39	21	6	55	11	0	0	5	2	138	0.44	59	42.8%
Henderson	241,134	2	0	2	3	19	3	237	149	154	26	309	60	115	5	6	1	844	3.50	247	29.3%
LV Metro PD	1,505,401	11	8	48	13	453	93	2,191	870	1,294	52	2,339	500	1,494	120	28	0	7,858	5.22	1,656	21.1%
LV Fire Dept*																10	1	10	N/A	1	10.0%
Mesquite	16,423	0	0	0	0	1	1	27	23	1	0	41	9	4	0	0	0	74	4.51	33	44.6%
North Las Vegas PE	18,219	2	0	4	0	53	10	293	142	209	16	298	58	209	13	2	2	1,070	58.73	241	22.5%
Taxicab Authority		0	0	0	0	0	0	1	0	0	0	27	2	0	0	0	0	28	0.00	2	7.1%
UNLV PD*	26,345	0	0	0	0	0	0	2	0	4	0	15	1	2	0	0	0	23	0.87	1	4.3%
County Total	1,796,380	15	8	54	16	530	108	2,812	1,229	1,689	102	3,093	641	1,826	138	51	6	10,070	5.61	2,248	22.3%
Douglas County																					
Douglas SO	50,108	0	0	2	0	1	1	43	27	12	1	65	11	2	1	1	0	126	2.51	41	32.5%
County Total	50,108	0	0	2	0	1	1	43	27	12	1	65	11	2	1	1	0	126	2.51	41	32.5%

*Population figure not included in county total
Table 2

Nevada UCR - - Monthly Crime/ Clearance Summary - - All Crimes

Contributing Agency	Est. Pop	Murder		Rape		Robbery		Assault		Burglary		Larceny		MV Theft		Arson		Total Crimes	Crime Rate	Clearances	Clearance Rate
December 2006																					
Elko County																					
Elko SO	22,627	0	0	0	0	0	0	7	3	2	0	3	1	1	1	0	0	13	0.57	5	38.5%
Carlin PD	2,261	0	0	0	0	0	0	1	1	0	0	0	0	0	0	0	0	1	0.44	1	100.0%
Elko PD	17,850	0	0	0	0	1	1	27	16	7	1	27	5	3	0	0	0	65	3.64	23	35.4%
WestWendover PD	4,848	0	0	0	0	2	1	9	9	1	1	8	2	0	0	0	0	20	4.13	13	65.0%
County Total	47,586	0	0	0	0	3	2	44	29	10	2	38	8	4	1	0	0	99	2.08	42	42.4%
Esmeralda County																					
Esmeralda SO	1,276	0	0	0	0	0	0	0	0	0	0	0	0	0	0	0	0	0	0.00	0	0.0%
County Total	1,276	0	0	0	0	0	0	0	0	0	0	0	0	0	0	0	0	0	0.00	0	0.0%
Eureka County																					
Eureka SO	1,485	0	0	0	0	0	0	0	0	1	0	1	0	0	0	0	0	2	1.35	0	0.0%
County Total	1,485	0	0	0	0	0	0	0	0	1	0	1	0	0	0	0	0	2	1.35	0	0.0%
Humboldt County																					
Humboldt SO	9,892	0	0	0	0	1	0	5	5	2	2	2	2	1	1	0	0	11	1.11	10	90.9%
Winnemucca PD	7,401	0	0	0	0	0	0	9	9	0	0	4	0	2	1	1	0	16	2.16	10	
County Total	17,293	0	0	0	0	1	0	14	14	2	2	6	2	3	2	1	0	27	1.56	20	74.1%

*Population figure not included in county total
Table 2

6
Assault data includes ALL assaults (aggravated and simple).

Nevada UCR - - Monthly Crime/ Clearance Summary - - All Crimes

Contributing Agency	Est. Pop	Murder		Rape		Robbery		Assault		Burglary		Larceny		MV Theft		Arson		Total Crimes	Crime Rate	Clearances	Clearance Rate
Lander County																		December 2006			
Lander SO	5,509	0	0	1	1	0	0	13	10	6	2	5	2	0	0	0	0	25	4.54	15	60.0%
County Total	5,509	0	0	1	1	0	0	13	10	6	2	5	2	0	0	0	0	25	4.54	15	60.0%
Lincoln County																					
Lincoln SO	3,886	0	0	0	0	0	0	2	0	0	0	1	0	0	0	1	0	4	1.03	0	0.0%
County Total	3,886	0	0	0	0	0	0	2	0	0	0	1	0	0	0	1	0	4	1.03	0	0.0%
Lyon County																					
Lyon SO	45,880	0	0	1	0	0	0	56	29	16	0	37	8	3	1	0	0	113	2.46	38	33.6%
Yerington PD	2,980	0	0	0	0	0	0	7	11	1	6	0	1	0	0	0	0	8	2.68	18	225.0%
County Total	48,860	0	0	1	0	0	0	63	40	17	6	37	9	3	1	0	0	121	2.48	56	46.3%
Mineral County																					
Mineral SO	4,629	0	0	0	0	0	0	4	4	1	0	0	0	0	0	0	0	5	1.08	4	80.0%
County Total	4,629	0	0	0	0	0	0	4	4	1	0	0	0	0	0	0	0	5	1.08	4	80.0%
Nye County																					
Nye SO	41,302	0	0	0	0	0	0	46	43	21	0	49	18	27	7	0	0	143	3.46	68	47.6%
County Total	41,302	0	0	0	0	0	0	46	43	21	0	49	18	27	7	0	0	143	3.46	68	47.6%

*Population figure not included in county total
Table 2

Nevada UCR - - Monthly Crime/ Clearance Summary - - All Crimes

Contributing Agency	Est. Pop	Murder		Rape		Robbery		Assault		Burglary		Larceny		MV Theft		Arson		Total Crimes	Crime Rate	Clearances	Clearance Rate
Pershing County																		December 2006			
Pershing SO	4,373	0	0	0	0	0	0	11	9	1	0	2	1	0	0	0	0	14	3.20	10	71.4%
Lovelock PD	2,363	0	0	0	0	0	0	2	2	1	0	3	1	0	0	0	0	6	2.54	3	50.0%
County Total	6,736	0	0	0	0	0	0	13	11	2	0	5	2	0	0	0	0	20	2.97	13	65.0%
Storey County																					
Storey	4,012	0	0	0	0	0	0	0	0	0	0	0	0	0	0	0	0	0	0.00	0	0.0%
County Total	4,012	0	0	0	0	0	0	0	0	0	0	0	0	0	0	0	0	0	0.00	0	0.0%
Washoe County																					
Washoe SO	101,491	0	1	0	0	2	1	65	42	55	7	91	11	18	4	1	0	232	2.29	66	28.4%
Reno PD	206,735	1	1	6	0	38	9	365	195	194	22	621	150	147	21	2	0	1,374	6.65	398	29.0%
Sparks PD	85,618	0	0	3	3	14	4	95	69	93	26	192	45	47	5	1	0	445	5.20	152	34.2%
UNR PD*	16,671	0	0	2	0	0	0	2	1	1	0	18	0	1	0	0	0	24	1.44	1	4.2%
Washoe Co Schl PD	65,000	0	0	0	0	0	0	3	2	0	0	13	8	0	0	1	1	17	0.26	11	64.7%
TMCC PD*	13,563	0	0	0	0	0	0	0	0	0	0	2	0	0	0	1	0	3	0.22	0	0.0%
County Total	393,844	1	2	11	3	54	14	530	309	343	55	937	214	213	30	6	1	2,095	5.32	628	30.0%
White Pine County																					
White Pine SO	9,275	1	1	0	0	0	0	10	4	9	1	5	1	0	0	0	0	25	2.70	7	28.0%
County Total	9,275	1	1	0	0	0	0	10	4	9	1	5	1	0	0	0	0	25	2.70	7	28.0%
Grand Total	2,515,870	17	11	69	20	592	126	3,688	1,774	2,166	189	4,392	933	2,102	188	61	7	13,087	5.20	3,248	24.8%

*Population figure not included in county total
Table 2

Nevada UCR - - Monthly Crimes/Clearances Summary - - Index Crimes

December 2006

Est. Pop	Murder		Rape		Robbery		Assault		Burglary		Larceny		MV Theft		Arson		Total Crimes	Crime Rate	Total Clear	Clearance Rate	
Statewide Totals																					
(Crimes/Clearances)	2,518,870	17	11	69	20	592	126	760	303	2166	189	4392	933	2102	188	61	7	10159	4.03	1777	17.49

Nevada (Projected 2006) vs National (2005) Index Crime Rates

(per 1,000 population)

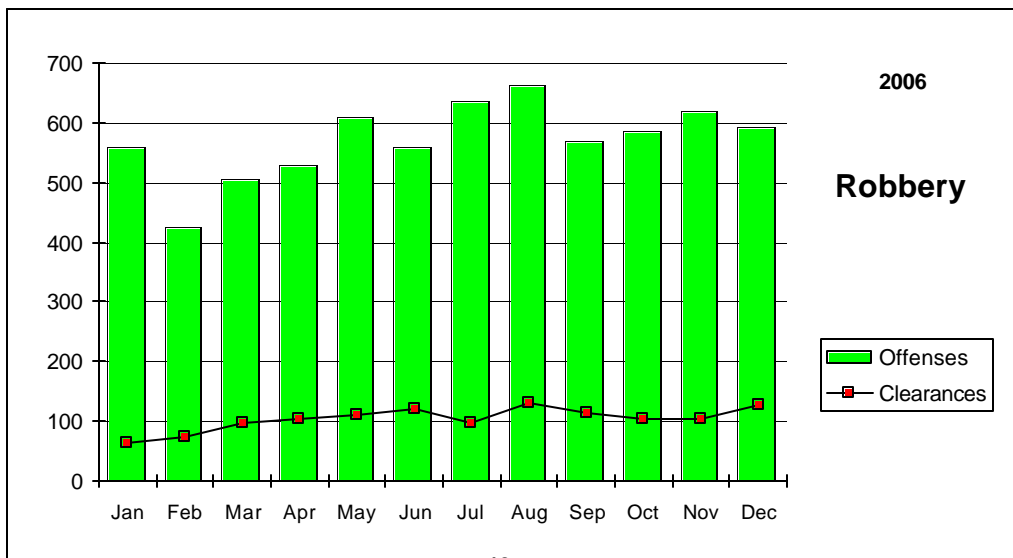
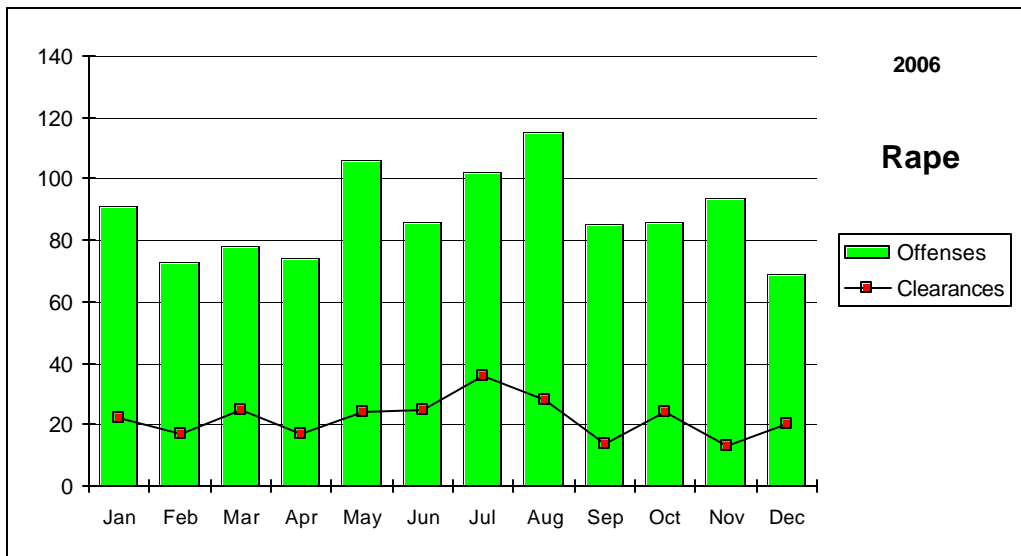
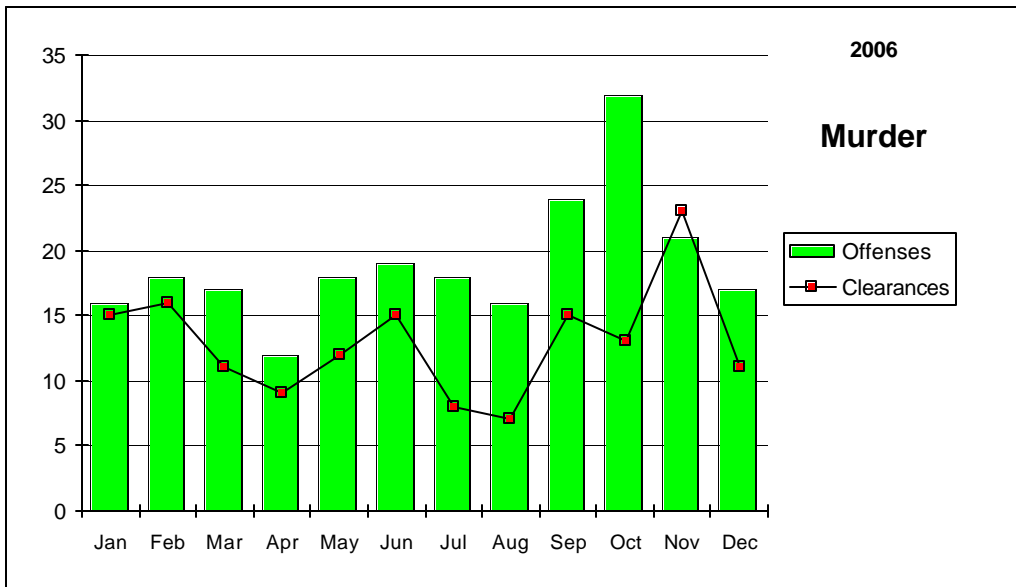
	Murder	Rape	Robbery	Assault	Burglary	Larceny	MV Theft	Arson	Crime Rate
Nevada	0.09	0.43	2.79	4.05	9.85	19.95	10.70	0.32	48.18
National	0.06	0.32	1.41	2.91	7.27	22.86	4.17	0.27	39.27

Nevada (Projected 2006) vs National (2005) Crime Clearance Rates

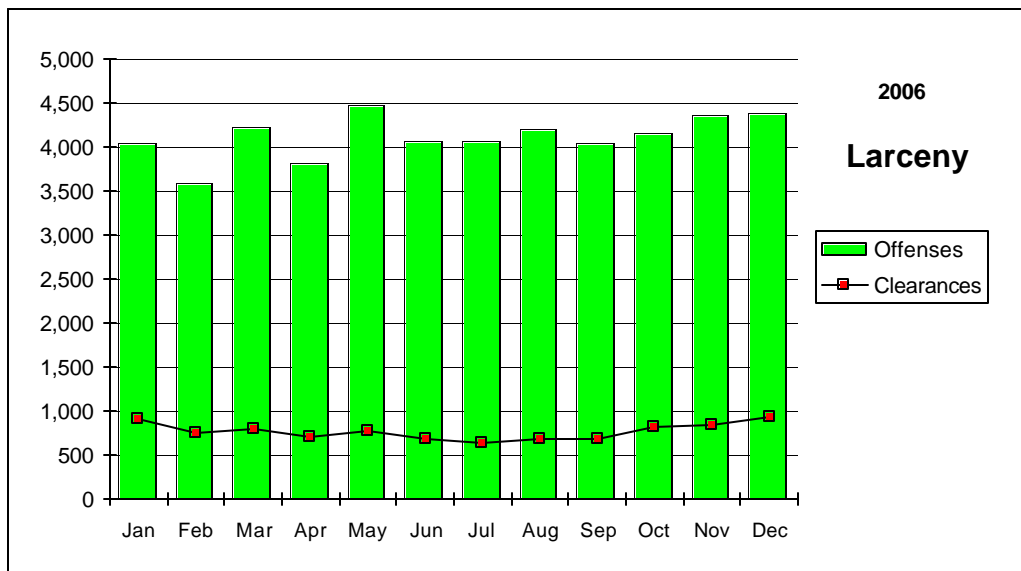
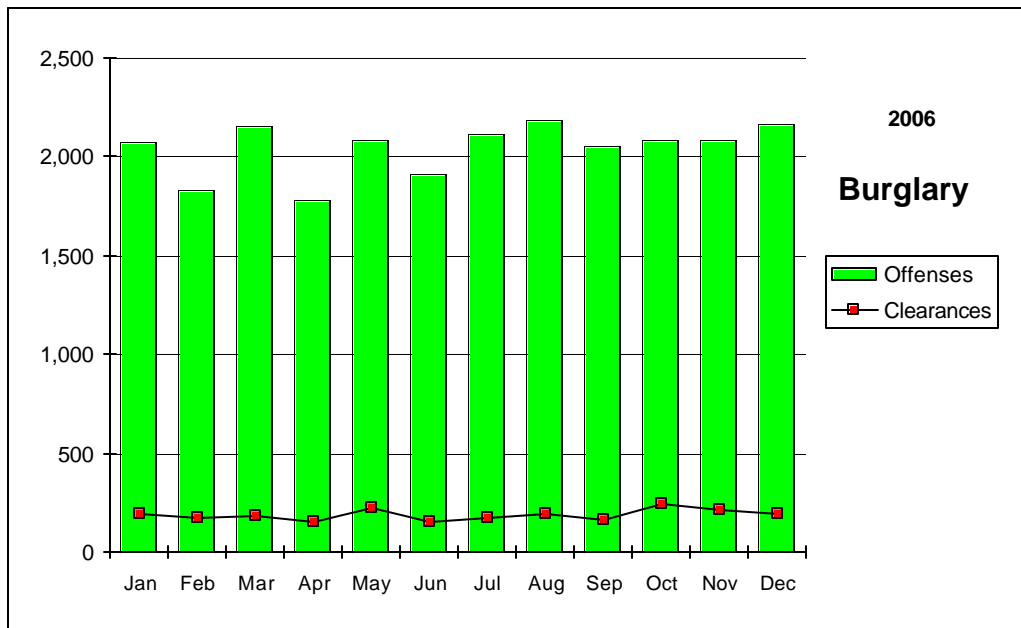
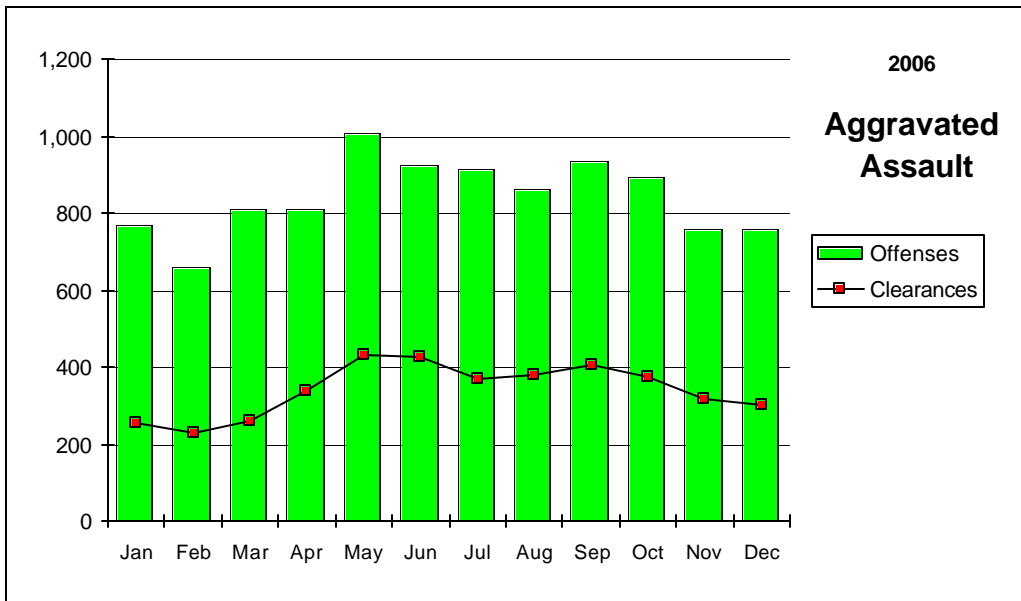
(by Percent)

	Murder	Rape	Robbery	Assault	Burglary	Larceny	MV Theft	Arson	Clear Rate
Nevada	67.7	25.1	18.1	40.6	9.2	18.7	9.5	20.5	21.2
National	62.1	41.3	25.4	55.2	12.7	18.0	13.0	17.9	19.7

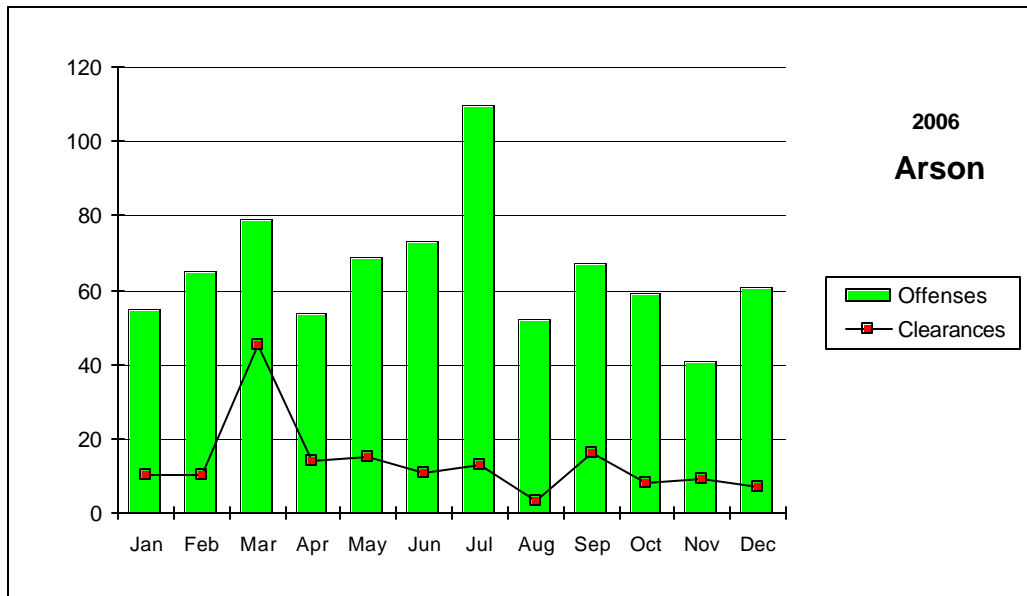
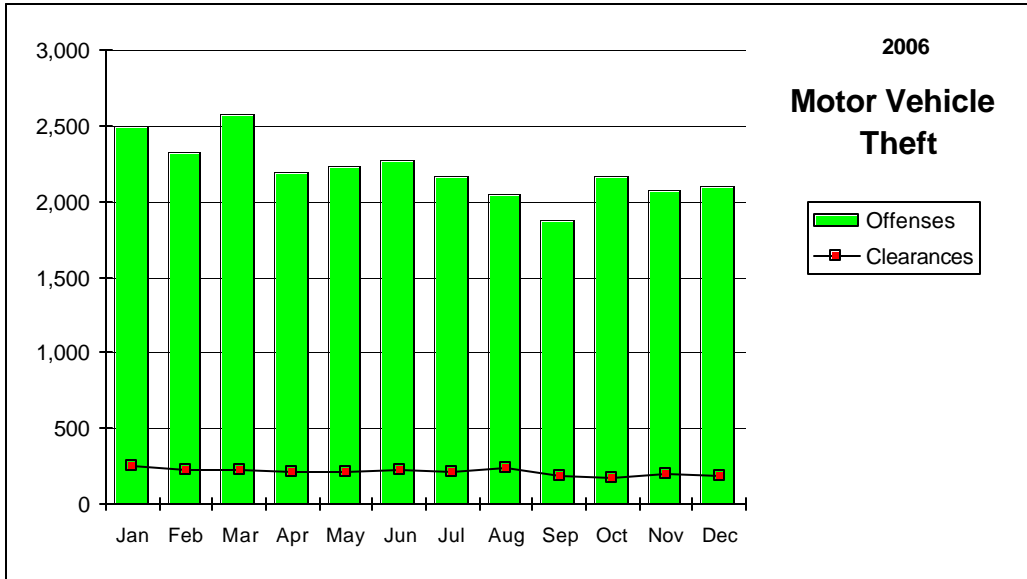
Nevada--Graphic Summary--UCR



Nevada--Graphic Summary--UCR



Nevada--Graphic Summary--UCR



Nevada--Murder--Incidence Level Variation--UCR

December 2006								
Agency	December 2006 Offenses	December 2006 Cleared	YTD Offenses	2006 YTD Cleared	December 2005 Offenses	December 2005 Cleared	YTD Offenses	2005 YTD Cleared
Boulder	0	0	1	0	0	0	1	1
Carlin PD	0	0	0	0	0	0	0	0
Carson SO	0	0	3	1	0	0	2	3
Churchill SO	0	0	1	1	0	0	1	1
Clark Co Schl PD	0	0	0	0	0	0	0	0
Douglas SO	0	0	2	1	0	0	1	1
Elko PD	0	0	0	0	1	1	1	1
Elko SO	0	0	1	0	1	1	1	1
Esmeralda SO	0	0	0	0	0	0	0	0
Eureka SO	0	0	0	0	0	0	0	0
Fallon PD	0	0	0	0	0	0	2	2
Henderson PD	2	0	7	1	0	0	11	6
Humboldt SO	0	0	0	0	0	0	0	0
Lander SO	0	0	0	0	0	0	0	0
Lincoln SO	0	0	0	0	0	0	0	0
Lovelock PD	0	0	0	0	0	0	0	0
LV Fire Dept	0	0	0	0	0	0	0	0
LV Metro	11	8	153	104	12	6	148	109
Lyon SO	0	0	1	1	0	0	1	1
Mesquite PD	0	0	1	1	0	0	0	0
Mineral SO	0	0	0	0	0	0	0	0
NLVPD	2	0	22	8	4	0	20	6
Nye SO	0	0	3	4	1	1	4	4
Pershing SO	0	0	1	1	0	0	0	0
Reno PD	1	1	23	24	2	2	9	9
Sparks PD	0	0	3	4	1	0	5	3
Storey SO	0	0	0	0	0	0	0	0
Taxicab Authority	0	0	0	0	0	0	0	0
TMCC PD	0	0	0	0	0	0	0	0
UNLV PD	0	0	0	0	0	0	0	0
UNR PD	0	0	0	0	0	0	0	0
Washoe SO	0	1	4	1	1	2	1	2
Washoe Co Schl PD	0	0	0	0	0	0	0	0
Wendover PD	0	0	1	1	0	0	0	0
White Pine SO	1	1	1	1	0	0	1	0
Winnemucca PD	0	0	1	1	0	0	1	1
Yerington PD	0	0	0	0	0	0	0	0
TOTALS	17	11	229	155	23	13	210	151

Nevada--Rape--Incidence Level Variation-UCR

December 2006

Agency	December	December	2006 YTD	2006 YTD	December	December	2005 YTD	2005 YTD
	2006	2006			2005	2005		
	Offenses	Cleared	Offenses	Cleared	Offenses	Cleared	Offenses	Cleared
Boulder	0	0	2	1	0	0	2	0
Carlin PD	0	0	0	0	0	0	1	0
Carson SO	0	0	2	1	-1	0	2	0
Churchill SO	0	0	9	15	0	0	11	19
Clark Co Schl PD	0	0	3	0	0	0	5	0
Douglas SO	2	0	24	14	1	0	23	13
Elko PD	0	0	7	2	1	0	16	5
Elko SO	0	0	6	2	0	0	6	4
Esmeralda SO	0	0	0	0	0	0	0	0
Eureka SO	0	0	1	0	0	0	0	0
Fallon PD	0	0	0	0	0	0	0	0
Henderson PD	2	3	63	38	5	1	40	10
Humboldt SO	0	0	0	0	0	0	0	0
Lander SO	1	1	11	9	1	1	10	2
Lincoln SO	0	0	0	0	0	0	1	0
Lovelock PD	0	0	0	2	1	0	2	0
LV Fire Dept	0	0	0	0	0	0	0	0
LV Metro	48	13	718	118	40	10	616	104
Lyon SO	1	0	5	2	1	1	10	3
Mesquite PD	0	0	2	1	0	0	1	1
Mineral SO	0	0	1	1	0	0	1	1
NLVPD	4	0	57	20	2	0	56	21
Nye SO	0	0	9	7	2	2	12	10
Pershing SO	0	0	10	0	0	0	7	4
Reno PD	6	0	100	17	7	0	110	20
Sparks PD	3	3	40	17	0	0	56	26
Storey SO	0	0	0	0	0	0	0	0
Taxicab Authority	0	0	0	0	0	0	0	0
TMCC PD	0	0	0	0	0	0	0	0
UNLV PD	0	0	0	0	0	0	3	1
UNR PD	2	0	6	1	1	0	8	3
Washoe SO	0	0	0	0	0	0	2	0
Washoe Co Schl PD	0	0	0	0	0	0	0	0
Wendover PD	0	0	2	1	1	1	8	8
White Pine SO	0	0	4	2	0	0	3	1
Winnemucca PD	0	0	2	1	0	0	2	1
Yerington PD	0	0	0	0	0	0	1	3
TOTALS	69	20	1,084	272	62	16	1,015	260

Nevada--Robbery--Incidence Level Variation--UCR

December 2006

Agency	December 2006 Offenses	December 2006 Cleared	YTD Offenses	2006 YTD Cleared	December 2005 Offenses	December 2005 Cleared	YTD Offenses	2005 YTD Cleared
Boulder	2	0	5	1	0	0	2	1
Carlin PD	0	0	0	0	0	0	0	0
Carson SO	2	1	22	13	1	1	27	13
Churchill SO	0	0	0	0	0	0	1	1
Clark Co Schl PD	2	1	47	19	7	2	27	5
Douglas SO	1	1	2	1	1	1	17	8
Elko PD	1	1	8	3	0	0	7	3
Elko SO	0	0	0	0	0	0	4	3
Esmeralda SO	0	0	0	0	0	0	0	0
Eureka SO	0	0	0	0	0	0	0	0
Fallon PD	1	0	4	1	0	0	4	3
Henderson PD	19	3	237	44	14	4	133	29
Humboldt SO	1	0	2	1	0	0	1	1
Lander SO	0	0	2	0	0	0	3	1
Lincoln SO	0	0	0	0	0	0	0	0
Lovelock PD	0	0	0	0	0	0	0	0
LV Fire Dept	0	0	0	0	0	0	0	0
LV Metro	453	93	5,381	883	387	43	3,494	510
Lyon SO	0	0	5	2	0	0	8	3
Mesquite PD	1	1	3	2	0	0	4	3
Mineral SO	0	0	0	0	0	0	0	0
NLVPD	53	10	584	93	48	5	408	81
Nye SO	0	0	10	5	2	1	9	4
Pershing SO	0	0	0	0	0	0	1	1
Reno PD	38	9	523	139	52	18	421	125
Sparks PD	14	4	124	43	14	7	96	42
Storey SO	0	0	0	0	0	0	0	0
Taxicab Authority	0	0	34	7	0	0	0	0
TMCC PD	0	0	0	0	0	0	0	0
UNLV PD	0	0	1	0	0	0	4	1
UNR PD	0	0	0	0	0	0	3	1
Washoe SO	2	1	22	6	0	0	14	5
Washoe Co Schl PD	0	0	2	2	0	0	5	1
Wendover PD	2	1	4	2	1	0	5	3
White Pine SO	0	0	1	1	0	0	1	0
Winnemucca PD	0	0	3	2	0	0	4	2
Yerington PD	0	0	0	0	0	0	0	0
TOTALS	592	126	7,026	1,270	527	82	4,703	850

Nevada--Aggravated Assault--Incidence Level Variation--UCR

December 2006

Agency	December 2006 Offenses	December 2006 Cleared	YTD Offense s	2006 YTD Cleared	December 2005 Offenses	December 2005 Cleared	YTD Offense s	2005 YTD Cleared
Boulder	1	1	11	9	1	1	14	11
Carlin PD	1	1	31	25	0	0	22	12
Carson SO	8	8	169	108	12	6	263	136
Churchill SO	4	2	42	39	5	7	38	40
Clark Co Schl PD	6	4	60	29	3	2	59	35
Douglas SO	6	5	59	35	2	1	43	25
Elko PD	2	2	32	15	1	0	12	5
Elko SO	0	0	12	11	1	1	19	11
Esmeralda SO	0	0	3	3	0	0	2	1
Eureka SO	0	0	5	4	0	0	4	1
Fallon PD	0	1	14	13	5	5	21	12
Henderson PD	17	10	283	170	20	7	250	140
Humboldt SO	5	5	49	47	1	1	53	48
Lander SO	3	3	30	26	1	1	9	7
Lincoln SO	1	0	4	3	0	0	3	3
Lovelock PD	0	0	8	6	0	0	8	8
LV Fire Dept	0	0	0	0	0	0	0	0
LV Metro	503	166	6,680	2,195	461	83	5,275	1,584
Lyon SO	5	4	74	50	3	2	95	88
Mesquite PD	2	3	25	21	2	2	23	19
Mineral SO	0	0	6	6	1	1	7	7
NLVPD	90	43	1,032	467	66	40	872	461
Nye SO	7	5	103	89	2	2	85	80
Pershing SO	7	6	62	42	5	1	43	20
Reno PD	56	17	832	405	73	42	979	458
Sparks PD	14	6	213	143	19	16	202	140
Storey SO	0	0	0	0	0	0	0	0
Taxicab Authority	1	0	92	23	4	3	49	24
TMCC PD	0	0	0	0	0	0	0	0
UNLV PD	1	0	5	1	0	0	6	3
UNR PD	1	1	26	11	2	2	10	7
Washoe SO	8	5	173	95	17	11	188	94
Washoe Co Schl PD	0	0	10	10	0	0	9	4
Wendover PD	1	1	10	9	2	2	21	20
White Pine SO	10	4	33	25	2	2	27	24
Winnemucca PD	0	0	12	10	1	1	15	14
Yerington PD	0	0	0	0	0	0	1	1
TOTALS	760	303	10,200	4,145	712	242	8,727	3,543

Nevada--All Assaults--Incidence Level Variation--UCR

December 2006

Agency	December 2006 Offenses	December 2006 Cleared	2006 YTD Offenses	2006 YTD Cleared	December 2005 Offenses	December 2005 Cleared	2005 YTD Offenses	2005 YTD Cleared
Boulder	6	6	36	26	5	2	44	24
Carlin PD	1	1	34	27	0	0	32	21
Carson SO	53	27	840	426	60	28	797	447
Churchill SO	17	14	228	209	22	22	256	248
Clark Co Schl PD	55	39	799	439	66	40	901	503
Douglas SO	43	27	605	446	39	28	634	471
Elko PD	27	16	351	206	42	24	284	137
Elko SO	7	3	112	78	11	9	139	91
Esmeralda SO	0	0	5	5	0	0	11	10
Eureka SO	0	0	8	6	1	0	20	14
Fallon PD	24	13	218	151	20	24	274	203
Henderson PD	237	149	2,820	1,767	167	102	2,414	1,390
Humboldt SO	5	5	57	54	2	2	65	60
Lander SO	13	10	123	102	5	5	92	49
Lincoln SO	2	0	21	27	2	2	28	22
Lovelock PD	2	2	59	58	4	3	49	48
LV Fire Dept	0	0	0	0	0	0	0	0
LV Metro	2,191	870	27,368	9,453	1,956	359	24,481	8,031
Lyon SO	56	29	598	310	52	51	617	590
Mesquite PD	27	23	228	201	19	19	188	178
Mineral SO	4	4	62	62	5	5	49	42
NLVPD	293	142	3,492	1,830	257	151	3,331	1,981
Nye SO	46	43	685	662	33	31	543	521
Pershing SO	11	9	74	48	5	1	58	27
Reno PD	365	195	4,850	2,544	416	214	4,618	2,428
Sparks PD	95	69	1,372	906	121	79	1,393	891
Storey SO	0	0	31	19	2	0	36	12
Taxicab Authority	1	0	95	23	5	3	51	24
TMCC PD	0	0	3	1	0	0	1	0
UNLV PD	2	0	36	16	1	1	24	12
UNR PD	2	1	35	13	2	2	22	10
Washoe SO	65	42	984	548	81	48	1,032	577
Washoe Co Schl PD	3	2	77	75	16	16	85	48
Wendover PD	9	9	89	90	5	5	93	85
White Pine SO	10	4	97	83	9	8	122	114
Winnemucca PD	9	9	94	82	5	5	95	90
Yerington PD	7	11	41	41	6	3	58	57
TOTALS	3,688	1,774	46,627	21,034	3,442	1,292	42,937	19,456

Nevada--Burglary--Incidence Level Variation--UCR

December 2006

Agency	December 2006 Offenses	December 2006 Cleared	YTD Offenses	2006 YTD Cleared	December 2005 Offenses	December 2005 Cleared	YTD Offenses	2005 YTD Cleared
Boulder	6	2	106	11	4	0	124	17
Carlin PD	0	0	18	3	5	1	33	6
Carson SO	21	2	291	76	26	8	386	100
Churchill SO	22	13	118	44	7	1	106	43
Clark Co SchI PD	21	6	255	43	19	3	270	50
Douglas SO	12	1	207	46	35	4	259	51
Elko PD	7	1	135	23	9	0	118	21
Elko SO	2	0	87	15	8	0	103	7
Esmeralda SO	0	0	1	1	0	0	2	0
Eureka SO	1	0	9	2	1	0	7	1
Fallon PD	10	3	62	15	6	2	61	12
Henderson PD	154	26	1,600	257	124	7	1,556	165
Humboldt SO	2	2	13	6	3	1	20	13
Lander SO	6	2	43	29	4	0	52	7
Lincoln SO	0	0	8	6	0	1	16	7
Lovelock PD	1	0	17	14	0	1	18	9
LV Fire Dept	0	0	0	0	0	0	0	0
LV Metro	1,294	52	14,913	868	1,215	256	14,368	3,391
Lyon SO	16	0	207	28	22	4	243	36
Mesquite PD	1	0	15	4	1	0	18	5
Mineral SO	1	0	23	7	0	0	37	5
NLVPD	209	16	2,523	171	158	19	1,866	145
Nye SO	21	0	270	51	25	3	257	78
Pershing SO	1	0	36	6	0	0	32	11
Reno PD	194	22	2,105	176	183	12	1,916	179
Sparks PD	93	26	893	241	75	27	740	235
Storey SO	0	0	13	3	0	0	14	1
Taxicab Authority	0	0	0	0	0	0	1	0
TMCC PD	0	0	3	0	1	0	11	1
UNLV PD	4	0	64	2	5	0	80	4
UNR PD	1	0	14	1	0	0	29	5
Washoe SO	55	7	566	56	65	9	488	53
Washoe Co SchI PD	0	0	23	4	2	0	44	8
Wendover PD	1	1	49	16	3	0	51	14
White Pine SO	9	1	61	9	4	2	64	20
Winnemucca PD	0	0	32	19	2	1	41	18
Yerington PD	1	6	35	33	2	1	27	20
TOTALS	2,166	189	24,815	2,286	2,014	363	23,458	4,738

Nevada--Larceny--Incidence Level Variation--UCR

December 2006

Agency	December 2006 Offenses	December 2006 Cleared	2006 YTD Offenses	2006 YTD Cleared	December 2005 Offense	December 2005 Cleared	2005 YTD Offenses	2005 YTD Cleared
Boulder	9	0	126	9	14	1	138	6
Carlin PD	0	0	9	2	2	0	24	2
Carson SO	82	15	819	179	60	16	948	260
Churchill SO	22	7	155	56	8	4	151	68
Clark Co Schl PD	55	11	888	132	72	9	829	122
Douglas SO	65	11	740	132	65	23	785	226
Elko PD	27	5	422	40	31	4	438	44
Elko SO	3	1	87	11	13	1	105	5
Esmeralda SO	0	0	5	4	1	0	4	0
Eureka SO	1	0	12	2	0	0	7	3
Fallon PD	46	3	347	53	32	5	453	99
Henderson PD	309	60	3,614	598	333	114	3,645	843
Humboldt SO	2	2	30	14	2	0	44	17
Lander SO	5	2	54	31	5	7	81	19
Lincoln SO	1	0	29	5	3	1	22	5
Lovelock PD	3	1	20	13	4	5	29	21
LV Fire Dept	0	0	0	0	0	0	0	0
LV Metro	2,339	500	26,815	5,184	2,252	367	27,695	6,016
Lyon SO	37	8	444	76	44	18	523	98
Mesquite PD	41	9	290	79	23	10	287	70
Mineral SO	0	0	18	4	2	0	21	2
NLVPD	298	58	3,456	527	293	37	3,249	623
Nye SO	49	18	476	155	61	22	720	301
Pershing SO	2	1	26	10	1	1	44	7
Reno PD	621	150	7,061	1,504	656	165	7,547	1,849
Sparks PD	192	45	2,104	312	198	44	2,045	439
Storey SO	0	0	31	3	6	0	52	2
Taxicab Authority	27	2	414	15	56	3	287	13
TMCC PD	2	0	13	0	1	0	12	0
UNLV PD	15	1	246	15	17	3	229	16
UNR PD	18	0	166	4	11	0	150	5
Washoe SO	91	11	846	83	68	7	744	77
Washoe Co Schl PD	13	8	160	54	22	10	274	57
Wendover PD	8	2	133	33	14	5	155	50
White Pine SO	5	1	111	34	5	2	124	31
Winnemucca PD	4	0	63	19	5	3	99	45
Yerington PD	0	1	14	13	1	1	23	16
TOTALS	4,392	933	50,244	9,405	4,381	888	51,983	11,457

Nevada--MV Theft--Incidence Level Variation--UCR

December 2006

Agency	December 2006				December 2005			
	2006 Offenses	December 2006 Cleared	2006 YTD Offenses	2006 YTD Cleared	2005 Offenses	December 2005 Cleared	2005 YTD Offenses	2005 YTD Cleared
Boulder	2	0	23	1	2	0	47	0
Carlin PD	0	0	5	1	0	0	1	4
Carson SO	17	7	137	46	7	2	115	37
Churchill SO	6	0	22	8	2	0	29	14
Clark Co Schl PD	0	0	45	11	9	4	52	10
Douglas SO	2	1	61	37	9	8	65	48
Elko PD	3	0	52	6	10	0	41	1
Elko SO	1	1	18	3	6	4	28	11
Esmeralda SO	0	0	1	1	0	0	1	1
Eureka SO	0	0	4	1	0	0	0	0
Fallon PD	1	1	26	10	6	0	29	7
Henderson PD	115	5	1,460	43	147	4	1,453	54
Humboldt SO	1	1	6	5	0	0	6	4
Lander SO	0	0	7	6	0	0	4	1
Lincoln SO	0	0	9	5	0	0	6	4
Lovelock PD	0	0	3	2	0	0	4	3
LV Fire Dept	0	0	0	0	0	0	0	0
LV Metro	1,494	120	19,677	1,777	1,781	198	19,950	2,041
Lyon SO	3	1	77	31	5	4	75	22
Mesquite PD	4	0	55	13	8	0	53	6
Mineral SO	0	0	5	2	2	0	7	1
NLVPD	209	13	2,638	112	214	7	2,466	119
Nye SO	27	7	190	81	13	9	151	101
Pershing SO	0	0	2	1	0	0	4	2
Reno PD	147	21	1,631	199	185	19	1,526	190
Sparks PD	47	5	455	80	47	8	450	105
Storey SO	0	0	2	0	1	0	8	1
Taxicab Authority	0	0	11	0	1	1	9	1
TMCC PD	0	0	0	0	0	0	0	0
UNLV PD	2	0	44	2	5	0	33	3
UNR PD	1	0	13	1	2	0	8	0
Washoe SO	18	4	219	52	32	11	250	46
Washoe Co Schl PD	0	0	1	1	0	0	2	0
Wendover PD	0	0	18	15	0	0	16	11
White Pine SO	0	0	30	13	3	0	19	10
Winnemucca PD	2	1	15	6	2	1	24	11
Yerington PD	0	0	0	0	0	0	2	2
TOTALS	2,102	188	26,962	2,572	2,499	280	26,934	2,871

Nevada--Arson--Incidence Level Variation--UCR

December 2006

Agency	December	December	2006		December	December	2005	
	2006	2006	2006 YTD	2006	2005	2005	2005 YTD	2005
	Offenses	Cleared	Offenses	YTD	Offenses	Cleared	Offenses	YTD
Boulder	0	0	3	0	0	0	2	0
Carlin PD	0	0	0	0	0	0	0	0
Carson SO	1	0	11	5	0	0	19	4
Churchill SO	0	0	3	3	0	0	3	1
Clark Co Schl PD	5	2	76	24	3	1	55	10
Douglas SO	1	0	8	4	1	1	5	2
Elko PD	0	0	8	1	1	0	8	1
Elko SO	0	0	3	1	0	0	1	0
Esmeralda SO	0	0	0	0	0	0	0	0
Eureka SO	0	0	0	0	0	0	0	0
Fallon PD	0	0	0	0	0	0	0	0
Henderson PD	6	1	88	16	7	0	98	31
Humboldt SO	0	0	1	1	0	0	2	1
Lander SO	0	0	0	0	0	0	0	0
Lincoln SO	1	0	2	2	0	0	1	1
Lovelock PD	0	0	0	0	0	0	0	0
LV Fire Dept	10	1	82	14	8	1	109	21
LV Metro	28	0	311	34	44	1	340	1
Lyon SO	0	0	17	4	1	1	7	4
Mesquite PD	0	0	0	0	0	0	0	0
Mineral SO	0	0	1	1	0	0	2	1
NLVPD	2	2	58	10	2	0	42	2
Nye SO	0	0	29	22	0	0	27	15
Pershing SO	0	0	0	0	0	0	0	0
Reno PD	2	0	37	3	0	0	14	8
Sparks PD	1	0	20	6	1	0	8	5
Storey SO	0	0	0	0	0	0	0	0
Taxicab Authority	0	0	0	0	0	0	0	0
TMCC PD	1	0	1	0	0	0	0	0
UNLV PD	0	0	1	0	0	0	2	0
UNR PD	0	0	0	0	0	0	4	1
Washoe SO	1	0	11	2	0	0	8	4
Washoe CO Scl PD	1	1	18	3	0	0	13	0
Wendover PD	0	0	3	2	0	0	7	5
White Pine SO	0	0	1	0	0	0	0	0
Winnemucca PD	1	0	8	6	0	0	0	0
Yerington PD	0	0	0	0	0	0	0	0
TOTALS	61	7	801	164	68	5	777	118

State of Nevada

Hate Crimes Reports for December 2006

#	Agency	ORI	Incident #	Date of Incident	UCR Offense	Location	Bias Motivation	Victim Type and Number	Offender Race and Number
1	LVMPD	NV0020100	612012414	12/1/2006	11-Destruction/Damage	20-Residence/Home	21-Anti-Jewisj	Individual-01	Unknown-00
2	LVMPD	NV0020100	612052422	12/5/2006	11-Destruction/Damage	20-Residence/Home	15-Anti-Multi-Racial Grp	Individual-02	White-02
3	LVMPD	NV0020100	612142244	12/14/2006	04-Aggravated Assault	13-Highway/Road	11-Anti-White	Individual-01	Black-02
4	LVMPD	NV0020100	612241139	12/24/2006	11-Destruction/Damage	20-Residence/Home	12-Anti-Black	Individual-01	Unknown-00
5	LVMPD	NV0020100	612251226	12/25/2006	10-Intimidation	04-Church/Synagoge	21-Anti-Jewish	Religious Org-01	Unknown-00
6	LVMPD	NV0020100	612261253	12/26/2006	11-Destruction/Damage	20-Residence/Home	21-Anti-Jewish	Individual-01	Unknown-00

Stolen/Recovered Property Report

December 2006

Property Type	Boulder PD	Carlin PD	Carson SO	Churchill SO	Clark Co Schl PD	Douglas SO	Elko PD	Elko SO	Esmeralda SO
Currency									
Stolen	\$4,307	\$0	\$61,505	\$735	\$975	\$4,286	\$3,375	\$0	\$0
Recovered	\$397	\$0	\$0	\$0	\$0	\$0	\$0	\$0	\$0
% Recovered	9.2%	0.0%	0.0%	0.0%	0.0%	0.0%	0.0%	0.0%	0.0%
Jewelry									
Stolen	\$0	\$0	\$19,896	\$40	\$0	\$418	\$14,000	\$0	\$0
Recovered	\$0	\$0	\$6,951	\$0	\$0	\$165	\$0	\$0	\$0
% Recovered	0.0%	0.0%	34.9%	0.0%	0.0%	39.5%	0.0%	0.0%	0.0%
Clothing									
Stolen	\$60	\$0	\$2,947	\$0	\$590	\$1,047	\$350	\$0	\$0
Recovered	\$0	\$0	\$337	\$0	\$0	\$7	\$0	\$0	\$0
% Recovered	0.0%	0.0%	11.4%	0.0%	0.0%	0.7%	0.0%	0.0%	0.0%
Motor Vehicle									
Stolen	\$8,100	\$0	\$153,626	\$29,250	\$0	\$22,000	\$48,601	\$5,500	\$0
Recovered	\$3,100	\$0	\$47,301	\$500	\$0	\$22,000	\$24,101	\$0	\$0
% Recovered	38.3%	0.0%	30.8%	1.7%	0.0%	100.0%	49.6%	0.0%	0.0%
Office Equipment									
Stolen	\$0	\$0	\$4,869	\$2,350	\$16,055	\$1,627	\$2,190	\$0	\$0
Recovered	\$0	\$0	\$89	\$0	\$0	\$97	\$0	\$0	\$0
% Recovered	0.0%	0.0%	1.8%	0.0%	0.0%	6.0%	0.0%	0.0%	0.0%
TV, VCR, Camera, Etc.									
Stolen	\$0	\$0	\$9,312	\$2,060	\$11,063	\$10,790	\$4,000	\$0	\$0
Recovered	\$0	\$0	\$0	\$0	\$0	\$2,300	\$4,000	\$0	\$0
% Recovered	0.0%	0.0%	0.0%	0.0%	0.0%	21.3%	100.0%	0.0%	0.0%
Firearm									
Stolen	\$0	\$0	\$3,150	\$580	\$0	\$1,180	\$0	\$0	\$0
Recovered	\$0	\$0	\$150	\$435	\$0	\$0	\$0	\$0	\$0
% Recovered	0.0%	0.0%	4.8%	75.0%	0.0%	0.0%	0.0%	0.0%	0.0%
Household Goods									
Stolen	\$0	\$0	\$0	\$0	\$150	\$0	\$155	\$0	\$0
Recovered	\$0	\$0	\$0	\$0	\$0	\$0	\$40	\$0	\$0
% Recovered	0.0%	0.0%	0.0%	0.0%	0.0%	0.0%	25.8%	0.0%	0.0%
Consumable Goods									
Stolen	\$0	\$0	\$55	\$633	\$2	\$1,308	\$83	\$15	\$0
Recovered	\$0	\$0	\$28	\$0	\$0	\$245	\$15	\$15	\$0
% Recovered	0.0%	0.0%	50.9%	0.0%	0.0%	18.7%	18.1%	100.0%	0.0%
Livestock									
Stolen	\$0	\$0	\$0	\$0	\$0	\$0	\$0	\$0	\$0
Recovered	\$0	\$0	\$0	\$0	\$0	\$0	\$0	\$0	\$0
% Recovered	0.0%	0.0%	0.0%	0.0%	0.0%	0.0%	0.0%	0.0%	0.0%
Misc.									
Stolen	\$3,345	\$0	\$21,462	\$10,875	\$54,151	\$34,048	\$5,311	\$0	\$0
Recovered	\$40	\$0	\$1,818	\$990	\$285	\$6,063	\$1,207	\$0	\$0
% Recovered	1.2%	0.0%	8.5%	9.1%	0.5%	17.8%	22.7%	0.0%	0.0%
TOTALS									
Stolen	\$15,812	\$0	\$276,822	\$46,523	\$82,986	\$76,704	\$78,065	\$5,515	\$0
Recovered	\$3,537	\$0	\$56,674	\$1,925	\$285	\$30,877	\$29,363	\$15	\$0
% Recovered	22.4%	0.0%	20.5%	4.1%	0.3%	40.3%	37.6%	0.3%	0.0%

Stolen/Recovered Property Report

December

Property Type	Eureka SO	Fallon PD	Henderson PD	Humboldt SO	Lander SO	Las Vegas Metro	Lincoln SO	Lovelock PD	Lyon SO
Currency									
Stolen	\$0	\$1,908	\$55,422	\$693	\$949	\$1,606,001	\$0	\$0	\$1,749
Recovered	\$0	\$0	\$29	\$0	\$0	\$5,369	\$0	\$0	\$0
% Recovered	0.0%	0.0%	0.1%	0.0%	0.0%	0.3%	0.0%	0.0%	0.0%
Jewelry									
Stolen	\$0	\$30	\$987,178	\$300	\$0	\$1,904,554	\$0	\$0	\$217
Recovered	\$0	\$0	\$6,211	\$300	\$0	\$23,770	\$0	\$0	\$0
% Recovered	0.0%	0.0%	0.6%	100.0%	0.0%	1.2%	0.0%	0.0%	0.0%
Clothing									
Stolen	\$0	\$453	\$39,856	\$0	\$0	\$436,347	\$0	\$0	\$172
Recovered	\$0	\$348	\$3,906	\$0	\$0	\$22,461	\$0	\$0	\$0
% Recovered	0.0%	76.8%	9.8%	0.0%	0.0%	5.1%	0.0%	0.0%	0.0%
Motor Vehicle									
Stolen	\$0	\$19,090	\$2,404,520	\$0	\$500	\$2,841,424	\$0	\$0	\$87,850
Recovered	\$0	\$19,090	\$1,698,780	\$0	\$0	\$1,033,681	\$0	\$0	\$86,800
% Recovered	0.0%	100.0%	70.6%	0.0%	0.0%	36.4%	0.0%	0.0%	98.8%
Office Equipment									
Stolen	\$0	\$0	\$71,710	\$0	\$0	\$686,667	\$0	\$0	\$3,928
Recovered	\$0	\$0	\$119	\$0	\$0	\$18,612	\$0	\$0	\$0
% Recovered	0.0%	0.0%	0.2%	0.0%	0.0%	2.7%	0.0%	0.0%	0.0%
TV, VCR, Camera, Etc.									
Stolen	\$0	\$870	\$131,718	\$0	\$600	\$921,866	\$0	\$0	\$115,660
Recovered	\$0	\$0	\$3,159	\$0	\$200	\$9,077	\$0	\$0	\$46
% Recovered	0.0%	0.0%	2.4%	0.0%	33.3%	1.0%	0.0%	0.0%	0.0%
Firearm									
Stolen	\$0	\$395	\$21,952	\$0	\$0	\$61,609	\$0	\$0	\$4,700
Recovered	\$0	\$0	\$200	\$0	\$0	\$2,322	\$0	\$0	\$3,830
% Recovered	0.0%	0.0%	0.9%	0.0%	0.0%	3.8%	0.0%	0.0%	81.5%
Household Goods									
Stolen	\$0	\$0	\$54,002	\$75	\$0	\$201,882	\$0	\$0	\$0
Recovered	\$0	\$0	\$0	\$0	\$0	\$1,410	\$0	\$0	\$0
% Recovered	0.0%	0.0%	0.0%	0.0%	0.0%	0.7%	0.0%	0.0%	0.0%
Consumable Goods									
Stolen	\$10	\$4	\$1,297	\$0	\$0	\$19,013	\$0	\$0	\$525
Recovered	\$0	\$2	\$355	\$0	\$0	\$2,076	\$0	\$0	\$94
% Recovered	0.0%	50.0%	27.4%	0.0%	0.0%	10.9%	0.0%	0.0%	17.9%
Livestock									
Stolen	\$0	\$0	\$0	\$0	\$0	\$1,250	\$0	\$0	\$0
Recovered	\$0	\$0	\$0	\$0	\$0	\$0	\$0	\$0	\$0
% Recovered	0.0%	0.0%	0.0%	0.0%	0.0%	0.0%	0.0%	0.0%	0.0%
Misc.									
Stolen	\$0	\$5,872	\$450,278	\$85	\$650	\$2,903,160	\$1,000	\$1,086	\$31,726
Recovered	\$0	\$237	\$4,738	\$0	\$0	\$41,074	\$0	\$0	\$168
% Recovered	0.0%	4.0%	1.1%	0.0%	0.0%	1.4%	0.0%	0.0%	0.5%
TOTALS									
Stolen	\$10	\$28,622	\$4,217,933	\$1,153	\$2,699	\$11,583,773	\$1,000	\$1,086	\$246,528
Recovered	\$0	\$19,677	\$1,717,497	\$300	\$200	\$1,159,852	\$0	\$0	\$90,938
% Recovered	0.0%	68.7%	40.7%	26.0%	7.4%	10.0%	0.0%	0.0%	36.9%

Stolen/Recovered Property Report

December 2006

Property Type	Mesquite PD	Mineral SO	NLVPD	Nye SO	Pershing SO	Reno PD	Sparks PD	Storey SO	Taxicab	TMCC PD
Currency										
Stolen	\$1,323	\$0	\$148,131	\$370	\$0	\$90,258	\$774,861	\$0	\$595	\$35
Recovered	\$441	\$0	\$1,845	\$0	\$0	\$1,488	\$1	\$0	\$0	\$0
% Recovered	33.3%	0.0%	1.2%	0.0%	0.0%	1.6%	0.0%	0.0%	0.0%	0.0%
Jewelry										
Stolen	\$1,500	\$0	\$206,732	\$6,881	\$0	\$202,337	\$47,051	\$0	\$0	\$20
Recovered	\$0	\$0	\$2,045	\$21	\$0	\$1,598	\$21,304	\$0	\$0	\$0
% Recovered	0.0%	0.0%	1.0%	0.3%	0.0%	0.8%	45.3%	0.0%	0.0%	0.0%
Clothing										
Stolen	\$1,014	\$0	\$26,361	\$0	\$0	\$19,839	\$12,578	\$0	\$50	\$20
Recovered	\$14	\$0	\$970	\$0	\$0	\$4,360	\$1,888	\$0	\$0	\$0
% Recovered	1.4%	0.0%	3.7%	0.0%	0.0%	22.0%	15.0%	0.0%	0.0%	0.0%
Motor Vehicle										
Stolen	\$22,300	\$0	\$2,529,683	\$19,663	\$0	\$919,083	\$404,025	\$0	\$0	\$0
Recovered	\$9,300	\$0	\$2,104,401	\$0	\$0	\$811,305	\$358,350	\$0	\$0	\$0
% Recovered	41.7%	0.0%	83.2%	0.0%	0.0%	88.3%	88.7%	0.0%	0.0%	0.0%
Office Equipment										
Stolen	\$105	\$0	\$0	\$7,431	\$0	\$56,797	\$23,026	\$0	\$0	\$0
Recovered	\$0	\$0	\$0	\$0	\$0	\$106	\$60	\$0	\$0	\$0
% Recovered	0.0%	0.0%	0.0%	0.0%	0.0%	0.2%	0.3%	0.0%	0.0%	0.0%
TV, VCR, Camera, Etc.										
Stolen	\$3,150	\$0	\$252,506	\$6,030	\$0	\$116,431	\$64,846	\$0	\$549	\$0
Recovered	\$3,150	\$0	\$6,751	\$0	\$0	\$325	\$2,804	\$0	\$0	\$0
% Recovered	100.0%	0.0%	2.7%	0.0%	0.0%	0.3%	4.3%	0.0%	0.0%	0.0%
Firearm										
Stolen	\$650	\$0	\$8,880	\$1,025	\$0	\$8,015	\$4,794	\$0	\$0	\$0
Recovered	\$0	\$0	\$500	\$0	\$0	\$0	\$0	\$0	\$0	\$0
% Recovered	0.0%	0.0%	5.6%	0.0%	0.0%	0.0%	0.0%	0.0%	0.0%	0.0%
Household Goods										
Stolen	\$0	\$0	\$81,936	\$1,846	\$0	\$16,034	\$105,503	\$0	\$0	\$0
Recovered	\$0	\$0	\$0	\$0	\$0	\$155	\$1,209	\$0	\$0	\$0
% Recovered	0.0%	0.0%	0.0%	0.0%	0.0%	1.0%	1.1%	0.0%	0.0%	0.0%
Consumable Goods										
Stolen	\$27	\$0	\$4,939	\$89	\$0	\$6,897	\$2,735	\$0	\$0	\$0
Recovered	\$0	\$0	\$524	\$89	\$0	\$687	\$252	\$0	\$0	\$0
% Recovered	0.0%	0.0%	10.6%	100.0%	0.0%	10.0%	9.2%	0.0%	0.0%	0.0%
Livestock										
Stolen	\$0	\$0	\$0	\$0	\$0	\$100	\$0	\$0	\$0	\$0
Recovered	\$0	\$0	\$0	\$0	\$0	\$0	\$0	\$0	\$0	\$0
% Recovered	0.0%	0.0%	0.0%	0.0%	0.0%	0.0%	0.0%	0.0%	0.0%	0.0%
Misc.										
Stolen	\$35,540	\$0	\$585,569	\$48,610	\$300	\$252,275	\$190,894	\$0	\$25	\$172
Recovered	\$175	\$0	\$3,195	\$4,789	\$0	\$6,842	\$10,619	\$0	\$0	\$0
% Recovered	0.5%	0.0%	0.5%	9.9%	0.0%	2.7%	5.6%	0.0%	0.0%	0.0%
TOTALS										
Stolen	\$65,609	\$0	\$3,844,737	\$91,945	\$300	\$1,688,066	#####	\$0	\$1,219	\$247
Recovered	\$13,080	\$0	\$2,120,231	\$4,899	\$0	\$826,866	\$396,487	\$0	\$0	\$0
% Recovered	19.9%	0.0%	55.1%	5.3%	0.0%	49.0%	24.3%	0.0%	0.0%	0.0%

Stolen/Recovered Property Report

December

Property Type	UNLV PD	UNR PD	Washoe SO	Washoe Co Schl PD	Wendover PD	White Pine SO	Winnemucca PD	Yerington PD	Total By Property
Currency									
Stolen	\$445	\$3,100	\$37,570	\$45	\$1,160	\$187	\$0	\$0	\$2,799,985
Recovered	\$0	\$0	\$0	\$0	\$0	\$0	\$0	\$0	\$9,570
% Recovered	0.0%	0.0%	0.0%	0.0%	0.0%	0.0%	0.0%	0.0%	0.3%
Jewelry									
Stolen	\$1,580	\$0	\$132,502	\$0	\$200	\$0	\$4,098	\$0	\$3,529,534
Recovered	\$0	\$0	\$44,200	\$0	\$200	\$0	\$0	\$0	\$106,765
% Recovered	0.0%	0.0%	33.4%	0.0%	100.0%	0.0%	0.0%	0.0%	3.0%
Clothing									
Stolen	\$1,030	\$450	\$1,395	\$0	\$0	\$0	\$0	\$0	\$544,559
Recovered	\$0	\$0	\$15	\$0	\$0	\$0	\$0	\$0	\$34,306
% Recovered	0.0%	0.0%	1.1%	0.0%	0.0%	0.0%	0.0%	0.0%	6.3%
Motor Vehicle									
Stolen	\$14,800	\$5,000	\$168,846	\$0	\$5,000	\$0	\$3,200	\$0	\$9,712,061
Recovered	\$0	\$5,000	\$59,546	\$0	\$5,000	\$0	\$3,200	\$0	\$6,291,455
% Recovered	0.0%	100.0%	35.3%	0.0%	100.0%	0.0%	100.0%	0.0%	64.8%
Office Equipment									
Stolen	\$0	\$2,280	\$17,381	\$0	\$0	\$0	\$0	\$0	\$896,416
Recovered	\$0	\$0	\$1,500	\$0	\$0	\$0	\$0	\$0	\$20,583
% Recovered	0.0%	0.0%	8.6%	0.0%	0.0%	0.0%	0.0%	0.0%	2.3%
TV, VCR, Camera, Etc.									
Stolen	\$26,365	\$4,060	\$18,894	\$2,840	\$1,650	\$1,140	\$0	\$0	\$1,706,400
Recovered	\$0	\$0	\$910	\$1,240	\$0	\$0	\$0	\$0	\$33,962
% Recovered	0.0%	0.0%	4.8%	43.7%	0.0%	0.0%	0.0%	0.0%	2.0%
Firearm									
Stolen	\$0	\$0	\$4,980	\$0	\$0	\$300	\$0	\$0	\$122,210
Recovered	\$0	\$0	\$0	\$0	\$0	\$0	\$0	\$0	\$7,437
% Recovered	0.0%	0.0%	0.0%	0.0%	0.0%	0.0%	0.0%	0.0%	6.1%
Household Goods									
Stolen	\$0	\$0	\$20,520	\$0	\$0	\$400	\$0	\$0	\$482,503
Recovered	\$0	\$0	\$0	\$0	\$0	\$0	\$0	\$0	\$2,814
% Recovered	0.0%	0.0%	0.0%	0.0%	0.0%	0.0%	0.0%	0.0%	0.6%
Consumable Goods									
Stolen	\$0	\$0	\$725	\$0	\$22	\$700	\$0	\$0	\$39,079
Recovered	\$0	\$0	\$5	\$0	\$22	\$0	\$0	\$0	\$4,409
% Recovered	0.0%	0.0%	0.7%	0.0%	100.0%	0.0%	0.0%	0.0%	11.3%
Livestock									
Stolen	\$0	\$0	\$0	\$0	\$0	\$0	\$0	\$0	\$1,350
Recovered	\$0	\$0	\$0	\$0	\$0	\$0	\$0	\$0	\$0
% Recovered	0.0%	0.0%	0.0%	0.0%	0.0%	0.0%	0.0%	0.0%	0.0%
Misc.									
Stolen	\$2,195	\$6,751	\$210,679	\$950	\$220	\$4,615	\$250	\$501	\$4,862,595
Recovered	\$75	\$0	\$9,883	\$350	\$0	\$0	\$0	\$0	\$92,548
% Recovered	3.4%	0.0%	4.7%	36.8%	0.0%	0.0%	0.0%	0.0%	1.9%
TOTALS									
Stolen	\$46,415	\$21,641	\$613,492	\$3,835	\$8,252	\$7,342	\$7,548	\$501	\$24,696,693
Recovered	\$75	\$5,000	\$116,059	\$1,590	\$5,222	\$0	\$3,200	\$0	\$6,603,849
% Recovered	0.2%	23.1%	18.9%	41.5%	63.3%	0.0%	42.4%	0.0%	26.7%

Nevada--Assaults on Officers by Agency--UCR

December 2006

Agency	December 2006 Offenses	December 2006 Cleared	2006 YTD Offenses	2006 YTD Cleared	December 2005 Offenses	December 2005 Cleared	2005 YTD Offenses	2005 YTD Cleared
Boulder	0	0	0	0	0	0	5	5
Carlin PD	0	0	1	0	0	0	2	2
Carson SO	2	2	12	11	1	0	7	6
Churchill SO	0	0	12	11	1	1	4	4
ClrkSchIDst PD	0	0	10	9	0	0	0	0
Douglas SO	0	0	7	7	3	3	10	10
Elko PD	1	1	9	5	1	1	5	4
Elko SO	0	0	0	0	0	0	0	0
Esmeralda SO	0	0	0	0	0	0	0	0
Eureka SO	0	0	2	2	0	0	0	0
Fallon PD	1	1	2	2	0	0	0	0
Henderson PD	0	0	10	8	2	2	36	36
Highway Patrol	5	5	41	39	2	2	25	20
Humboldt SO	0	0	0	0	0	0	0	0
Lander SO	0	0	0	0	0	0	0	0
Lincoln SO	0	0	0	0	0	0	0	0
Lovelock PD	0	0	0	0	0	0	0	0
LV Fire Dept	0	0	0	0	0	0	0	0
LV Metro	31	31	397	381	35	28	296	280
Lyon SO	1	1	13	11	1	1	13	13
Mesquite PD	0	0	0	0	0	0	0	0
Mineral SO	0	0	0	0	0	0	0	0
NV Div Investigations	0	0	0	0	0	0	0	0
NLVPD	11	11	42	40	5	5	46	45
Nye SO	0	0	11	6	0	0	2	2
Pershing SO	0	0	0	0	0	0	0	0
Reno PD	2	2	19	19	6	6	20	20
Sparks PD	3	3	11	10	1	1	2	2
Storey SO	0	0	0	0	0	0	0	0
Taxicab Authority	0	0	0	0	0	0	0	0
TMCC PD	0	0	0	0	0	0	0	0
UNLV PD	0	0	1	1	0	0	1	1
UNR PD	0	0	0	0	0	0	1	1
Washoe SO	0	0	0	0	0	0	0	0
Washoe Co Schl PD	0	0	0	0	0	0	0	0
Wendover PD	1	1	6	5	2	2	7	7
White Pine SO	2	2	4	3	0	0	5	5
Winnemucca PD	0	0	2	2	0	0	2	2
Yerington PD	0	0	0	0	0	0	0	0
TOTALS	60	60	612	572	60	52	489	465

Nevada -- Assaults by Agency/Weapon/Assignment -- UCR

December 2006

Table 16

Agency	Total Assaults	Number Cleared	Firearm	Knife / Cutting Device	Other Danger. Weapon	Hands, Fists, Feet, Etc.	2-Officer Vehicle	1-Officer Vehicle-Alone	1-Officer Vehicle-Assisted	Det./Spec. Assign. - Alone	Det./Spec. Assign. - Assisted	Other-Alone	Other-Assisted
Boulder City PD	0	0	0	0	0	0	0	0	0	0	0	0	0
Carlin PD	0	0	0	0	0	0	0	0	0	0	0	0	0
Carson City SO	2	2	0	0	1	1	1	1	0	0	0	0	0
Churchill Co SO	0	0	0	0	0	0	0	0	0	0	0	0	0
Clark School Dist PD	0	0	0	0	0	0	0	0	0	0	0	0	0
Douglas Co SO	0	0	0	0	0	0	0	0	0	0	0	0	0
Elko PD	1	1	0	1	0	0	0	1	0	0	0	0	0
Elko Co SO	0	0	0	0	0	0	0	0	0	0	0	0	0
Esmeralda Co SO	0	0	0	0	0	0	0	0	0	0	0	0	0
Eureka Co SO	0	0	0	0	0	0	0	0	0	0	0	0	0
Fallon PD	1	1	0	0	0	1	0	0	1	0	0	0	0
Henderson PD	0	0	0	0	0	0	0	0	0	0	0	0	0
NV Highway Patrol	5	5	0	0	0	5	2	1	2	0	0	0	0
Humboldt Co SO	0	0	0	0	0	0	0	0	0	0	0	0	0
Lander Co SO	0	0	0	0	0	0	0	0	0	0	0	0	0
Lincoln Co SO	0	0	0	0	0	0	0	0	0	0	0	0	0
Lovelock PD	0	0	0	0	0	0	0	0	0	0	0	0	0
Las Vegas Fire Dept	0	0	0	0	0	0	0	0	0	0	0	0	0
Las Vegas Metro PD	31	31	0	0	3	28	22	3	2	0	4	0	0
Lyon Co SO	1	1	0	0	0	1	0	0	1	0	0	0	0
Mesquite PD	0	0	0	0	0	0	0	0	0	0	0	0	0
Mineral Co SO	0	0	0	0	0	0	0	0	0	0	0	0	0
NV Div of Investigations	0	0	0	0	0	0	0	0	0	0	0	0	0
North Las Vegas PD	11	11	1	0	0	10	6	1	1	0	0	0	3
Nye Co SO	0	0	0	0	0	0	0	0	0	0	0	0	0
Pershing Co SO	0	0	0	0	0	0	0	0	0	0	0	0	0
Reno PD	2	2	0	0	0	2	1	0	1	0	0	0	0
Sparks PD	3	3	0	0	0	3	0	1	2	0	0	0	0
Storey Co SO	0	0	0	0	0	0	0	0	0	0	0	0	0
Taxi Authority	0	0	0	0	0	0	0	0	0	0	0	0	0
TMCC PD	0	0	0	0	0	0	0	0	0	0	0	0	0
UNLV PD	0	0	0	0	0	0	0	0	0	0	0	0	0
UNR PD	0	0	0	0	0	0	0	0	0	0	0	0	0
Washoe Co SO	0	0	0	0	0	0	0	0	0	0	0	0	0
Washoe Co School PD	0	0	0	0	0	0	0	0	0	0	0	0	0
West Wendover PD	1	1	0	0	0	1	0	1	0	0	0	0	0
White Pine Co SO	2	2	0	0	0	2	0	2	0	0	0	0	0
Winnemucca PD	0	0	0	0	0	0	0	0	0	0	0	0	0
Yerington PD	0	0	0	0	0	0	0	0	0	0	0	0	0
TOTALS	60	60	1	1	4	54	32	11	10	0	4	0	3

28

Nevada -- Officer Assaults by Activity/Weapon/Assignment -- UCR

December 2006

Table 17

ACTIVITY TYPE	Total Assaults	Number Cleared	Firearm	Knife / Cutting Device	Other Danger. Weapon	Hands, Fists, Feet, Etc.	2-Officer Vehicle	1-Officer Vehicle- Alone	1-Officer Vehicle- Assisted	Det./Spec. Assign.- Alone	Det./Spec. Assign.- Assisted	Other- Alone	Other- Assisted
DOMESTIC / OTHER DISTURBANCE	22	22	1	0	1	20	14	3	5	0	0	0	0
BURGLARY IN PROGRESS	0	0	0	0	0	0	0	0	0	0	0	0	0
ROBBERY IN PROGRESS	0	0	0	0	0	0	0	0	0	0	0	0	0
ATTEMPTING OTHER ARREST	4	4	0	0	0	4	0	2	0	0	2	0	0
CIVIL DISORDER	0	0	0	0	0	0	0	0	0	0	0	0	0
HANDLING PRISONER	8	8	0	0	0	8	3	1	2	0	0	0	2
INVEST. SUSP. PERSONS / CIRCUM.	3	3	0	0	0	3	3	0	0	0	0	0	0
AMBUSH-NO WARNING	0	0	0	0	0	0	0	0	0	0	0	0	0
MENTALLY DERANGED	0	0	0	0	0	0	0	0	0	0	0	0	0
TRAFFIC PURSUITS / STOPS	18	18	0	0	3	15	11	4	2	0	0	0	1
ALL OTHER	5	5	0	1	0	4	1	1	1	0	2	0	0
TOTALS	60	60	1	1	4	54	32	11	10	0	4	0	3

29

Nevada--Assaults with Injury/without Injury--UCR

December 2006

Agency	Total Assaults by weapon		Firearm		Cutting Instruments		Other Dangerous weapons		Hands, Fists, Feet, Etc.		
	With personal injury	Without personal injury	With personal injury	Without personal injury	With personal injury	Without personal injury	With personal injury	Without personal injury	With personal injury	Without personal injury	
Boulder City PD	0	0	0	0	0	0	0	0	0	0	
Carlin PD	0	0	0	0	0	0	0	0	0	0	
Carson City SO	2	0	2	0	0	0	0	1	0	1	
Churchill Co SO	0	0	0	0	0	0	0	0	0	0	
Clark Co Schl Dist PD	0	0	0	0	0	0	0	0	0	0	
Douglas Co SO	0	0	0	0	0	0	0	0	0	0	
Elko Co SO	0	0	0	0	0	0	0	0	0	0	
Elko PD	1	0	1	0	0	1	0	0	0	0	
Esmeralda Co SO	0	0	0	0	0	0	0	0	0	0	
Eureka Co SO	0	0	0	0	0	0	0	0	0	0	
Fallon PD	1	0	1	0	0	0	0	0	0	1	
Henderson PD	0	0	0	0	0	0	0	0	0	0	
NV Highway Patrol	5	0	5	0	0	0	0	0	0	5	
Humboldt Co SO	0	0	0	0	0	0	0	0	0	0	
Lander Co SO	0	0	0	0	0	0	0	0	0	0	
Las Vegas Metro PD	31	23	8	0	0	0	2	1	21	7	
Lincoln Co SO	0	0	0	0	0	0	0	0	0	0	
Lovelock PD	0	0	0	0	0	0	0	0	0	0	
Lyon Co SO	1	0	1	0	0	0	0	0	0	1	
Mesquite PD	0	0	0	0	0	0	0	0	0	0	
Mineral Co SO	0	0	0	0	0	0	0	0	0	0	
NV Div Investigations	0	0	0	0	0	0	0	0	0	0	
North Las Vegas PD	11	0	11	0	1	0	0	0	0	10	
Nye Co SO	0	0	0	0	0	0	0	0	0	0	
Pershing Co SO	0	0	0	0	0	0	0	0	0	0	
Reno PD	2	1	1	0	0	0	0	0	1	1	
Sparks PD	3	0	3	0	0	0	0	0	0	3	
Storey Co SO	0	0	0	0	0	0	0	0	0	0	
Taxicab Authority	0	0	0	0	0	0	0	0	0	0	
TMCC PD	0	0	0	0	0	0	0	0	0	0	
UNLV PD	0	0	0	0	0	0	0	0	0	0	
UNR PD	0	0	0	0	0	0	0	0	0	0	
Washoe Co SO	0	0	0	0	0	0	0	0	0	0	
Washoe Co School Dist.	0	0	0	0	0	0	0	0	0	0	
West Wendover PD	1	0	1	0	0	0	0	0	0	1	
White Pine Co SO	2	0	2	0	0	0	0	0	0	2	
Winnemucca PD	0	0	0	0	0	0	0	0	0	0	
Yerington PD	0	0	0	0	0	0	0	0	0	0	
Totals	60	24	36	0	1	0	1	2	2	22	32

Nevada--Time of Assaults on Officers--UCR

December 2006

Agency	2:00 AM	4:00 AM	6:00 AM	8:00 AM	10:00 AM	12:00 AM	12:01-2:00 PM	2:00-4:00 PM	4:00-6:00 PM	6:00-8:00 PM	10:00 PM	10:00-12:00 PM
Boulder City PD	0	0	0	0	0	0	0	0	0	0	0	0
Carlin PD	0	0	0	0	0	0	0	0	0	0	0	0
Carson City SO	0	0	0	0	0	0	0	0	0	0	1	1
Churchill Co SO	0	0	0	0	0	0	0	0	0	0	0	0
Clark Co Schl Dist PD	0	0	0	0	0	0	0	0	0	0	0	0
Douglas Co SO	0	0	0	0	0	0	0	0	0	0	0	0
Elko Co SO	0	0	0	0	0	0	0	0	0	0	0	0
Elko PD	1	0	0	0	0	0	0	0	0	0	0	0
Esmeralda Co SO	0	0	0	0	0	0	0	0	0	0	0	0
Eureka Co SO	0	0	0	0	0	0	0	0	0	0	0	0
Fallon PD	0	0	0	0	1	0	0	0	0	0	0	0
Henderson PD	0	0	0	0	0	0	0	0	0	0	0	0
Highway Patrol	0	0	0	0	0	0	0	2	1	0	2	0
Humboldt Co SO	0	0	0	0	0	0	0	0	0	0	0	0
Lander Co SO	0	0	0	0	0	0	0	0	0	0	0	0
Las Vegas Metro PD	2	2	2	2	0	4	0	3	4	2	1	9
Lincoln Co SO	0	0	0	0	0	0	0	0	0	0	0	0
Lovelock PD	0	0	0	0	0	0	0	0	0	0	0	0
Lyon Co SO	0	0	0	0	0	0	0	0	0	1	0	0
Mesquite PD	0	0	0	0	0	0	0	0	0	0	0	0
Mineral Co SO	0	0	0	0	0	0	0	0	0	0	0	0
NV Div Investigations	0	0	0	0	0	0	0	0	0	0	0	0
North LV PD	0	0	1	1	0	0	2	0	4	2	0	1
Nye Co SO	0	0	0	0	0	0	0	0	0	0	0	0
Pershing Co SO	0	0	0	0	0	0	0	0	0	0	0	0
Reno PD	0	1	0	0	0	0	0	0	0	0	0	1
Sparks PD	0	0	0	0	0	0	0	2	0	0	0	1
Storey Co SO	0	0	0	0	0	0	0	0	0	0	0	0
Taxicab Authority	0	0	0	0	0	0	0	0	0	0	0	0
TMCC PD	0	0	0	0	0	0	0	0	0	0	0	0
UNLV PD	0	0	0	0	0	0	0	0	0	0	0	0
UNR PD	0	0	0	0	0	0	0	0	0	0	0	0
Washoe Co SO	0	0	0	0	0	0	0	0	0	0	0	0
Washoe Co Schl PD	0	0	0	0	0	0	0	0	0	0	0	0
West Wendover PD	0	0	0	0	1	0	0	0	0	0	0	0
White Pine Co SO	1	0	0	0	0	0	0	0	1	0	0	0
Winnemucca PD	0	0	0	0	0	0	0	0	0	0	0	0
Yerington PD	0	0	0	0	0	0	0	0	0	0	0	0
Totals	4	3	3	3	2	4	2	7	10	5	4	13

Nevada -- Division Of Investigations

Arrests for Narcotics Violations

Dec 2006

		10-	13-											23	25-	30-	35-	40-	45-	50-	55-	60-	>64	Total	W	B	A	I						
		<10	12	14	15	16	17	18	19	20	21	22	24	29	34	39	44	49	54	59	64													
SALES/MANUFACTURING VIOLATIONS																																		
Opium or cocaine and their derivatives (morphine, heroin, codeine)	M																				1					1	2							
	F																								0	1	1							
Marijuana	M																				1					1								
	F																								1	2								
Synthetic narcotics- Manufactured narcotics that can cause true drug addiction (demerol, meth)	M																								1	1	2							
	F																								1	1	1	2	1					
Other dangerous, non-narcotic, drugs (barbituates, benzderine)	M																				1	1	2	2					6					
	F																								1	1	1	3	8	1				
Sub-Total	M	0	0	0	0	0	0	1	1	1	0	0	2	2	0	1	0	1	1	1	0	0	11	0	0	0	0							
	F	0	0	0	0	0	0	0	0	0	0	1	1	2	0	0	0	1	0	0	0	0	5	13	2	1	0							
POSSESSION VIOLATIONS																																		
Opium or cocaine and their derivatives (morphine, heroin, codeine)	M																				1					1								
	F																								0	1								
Marijuana	M																								1									
	F																				1	2												
Synthetic narcotics- Manufactured narcotics that can cause true drug addiction (demerol, meth)	M																																	
	F																																	
Other dangerous, non-narcotic, drugs (barbituates, benzderine)	M																				1	2	1	1	5									
	F																								2	2	9							
Sub-Total	M	0	0	0	0	0	0	1	1	0	0	0	0	0	2	2	1	0	0	0	0	7	0	0	0	0								
	F	0	0	0	0	0	0	0	0	0	0	0	0	1	2	0	2	0	0	0	0	5	11	1	0	0								
Total		0	0	0	0	0	0	1	2	2	0	1	3	4	1	5	2	5	1	1	0	0	28	24	3	1	0							

AGE, RACE AND SEX OF PERSONS CHARGED

18 Years of Age and over

December 2006

CLASSIFICATION OF OFFENSES	SEX															Total Over 18	RACE						
		18	19	20	21	22	23	24	25-29	30-34	35-39	40-44	45-49	50-54	55-59		60-64	over 65	White	Black	American Indian or Alaskan Native	Asian or Pacific Islander	
Murder and Nonnegligent Manslaughter	01a	Male							1	2	1	2						1	7				
		Female																	0	6	1		
Manslaughter by Negligence	01b	Male								1								1	2				
		Female																	0	1	1		
Forcible Rape	02	Male	1		1			1		4		2	4	1	2			1	17				
		Female																	0	14	2	1	
Robbery	03	Male	8	11	4	1	8	1	8	21	10	16	12	4	4		1		109				
		Female		2	3	1				3	1	4		2					16	67	54	3	1
Aggravated Assault (Return A-4a-d)	04	Male	4	5	6	9	5	3	7	37	19	12	14	11	9	2	3	3	149				
		Female	2	2	1	1		2	2	6	7	5	1	3	3				35	123	54	6	1
Burglary--Breaking or Entering	05	Male	8	8	4	3	7	11	4	19	13	10	11	13	2	4			117				
		Female	1	1		1	1	4	4	5	5	8	4	2		1			37	128	24	1	1
Larceny--Theft (except Motor Vehicle Theft)	06	Male	33	26	21	23	19	18	17	77	64	64	66	47	24	6	8	4	517				
		Female	18	15	16	10	12	10	11	50	33	46	25	16	9	3	3	1	278	583	166	18	28
Motor Vehicle Theft	07	Male	5	7	6	7	6	6	4	22	23	8	14	4	2	1		1	116				
		Female	3	1		2	2	1		8	5	2	2	2					28	107	32	1	4
Other Assaults (Return A-4e)	08	Male	24	40	30	36	33	50	43	188	158	134	119	85	45	24	9	7	1025				
		Female	13	14	16	17	12	15	11	67	57	44	45	30	18	6	1	2	368	1022	306	19	46
Arson	09	Male										1							1	1	1		
		Female	1																1				
Forgery & Counterfeiting	10	Male			2	2	2	1		12	3	7	7	3	3		1		43				
		Female			2	1	2	4	1	4	8	5	2	1					30	54	13	1	5
Fraud	11	Male	4	4	5	3	4	4	3	9	27	19	17	21	9	2	3	1	135				
		Female			2	6	3	3	8	13	7	12	15	17	5		1	1	93	178	37		13
Embezzlement	12	Male	1	1	1	2	1			6	4	2	4	1	1				24				
		Female	1	1	6	2		2	1	5	4	3		4					29	40	10		3
Stolen Property; Buying, Receiving, Possessing	13	Male	4	3	8	6	5	4	2	26	11	17	9	13	1	2		1	112				
		Female	1			1	2			3	4	3	3		2				19	112	18		1
Vandalism	14	Male	11	4	3	2	2		5	9	5	8	2	4	5	2		1	63				
		Female	1	1		1	3			4		1	1	2		2			16	62	14		3
Weapons; Carrying, Possessing, etc.	15	Male	13	14	6	10	9	7	11	26	19	14	5	5	3	3		1	146				
		Female	1	1		1				2		1		1	1				8	104	44	1	5
Prostitution and Commercialized Vice	16	Male	1	1	3	3	3		3	14	10	7	14	5	7	3		2	76				
		Female	14	34	15	24	29	21	17	73	33	24	24	15	7	4			334	240	138	5	27
Sex Offenses (except Forcible Rape and Prostitution)	17	Male	2	1		3		3	2	9	5	4	10	13	4	3	2	1	62				
		Female				1					1		1						3	56	7		2
Drug Abuse Violations Grand Total	18	Male	50	55	50	45	45	48	25	174	114	83	67	64	33	12	0	6	871				
		Female	12	12	2	7	10	12	9	43	18	17	25	11	7	1	0	0	186	745	284	5	24
(1) Sale/Manufacturing Subtotal	180	Male	7	11	6	7	6	11	11	37	23	12	8	17	13	1	0	2	172				
		Female	2	0	0	2	2	1	1	14	4	5	6	4	1	0	0	0	42	151	58	0	5
Opium or Cocaine and Their Derivatives (Morphine, Heroin, Codeine)	a	Male	4	5	3	2	5	1	2	17	9	6	2	8	8				72				
		Female	1			1				1	4	2		4	2				15	63	22		2
Marijuana	b	Male	2	5	2	4		2	4	6	4	1	4		2	1			37				
		Female				1				5				1					7	20	23		1
Synthetic Narcotics--Manufactured Narcotics Which Can Cause True Drug Addiction (Demerol, Methadone)	c	Male				1	3	2	6	2	2	2	4	2				2	26				
		Female				1				1		2	1	2					7	30	3		
Other Dangerous Non-Narcotic Drugs (Barbiturates, Benzedrine)	d	Male	1	1	1	1		5	3	8	8	3		5	1				37				
		Female	1			1	1			4	2	3	1						13	38	10		2

CLASSIFICATION OF OFFENSES		SEX															Total Over 18	RACE					
			18	19	20	21	22	23	24	25-29	30-34	35-39	40-44	45-49	50-54	55-59		60-64	over 65	White	Black	American Indian or Alaskan Native	Asian or Pacific Islander
(2) Possession - Subtotal	185	Male	43	44	44	38	39	37	14	137	91	71	59	47	20	11	0	4	699				
		Female	10	12	2	5	8	11	8	29	14	12	19	7	6	1	0	0	144	594	226	5	19
Opium or Cocaine and Their Derivatives (Morphine, Heroin, Codeine)	e	Male	4	2	5	6	7	1	4	22	12	21	15	15	3	5		1	123				
		Female	1			2	1	2	4	7	4	2	4	4	1				32	91	60		4
Marijuana	f	Male	36	39	34	23	26	30	10	76	44	30	20	13	10	3		1	395				
		Female	8	7	2	3	5	7	2	14	3	3	5	1	3				63	294	152	3	9
Synthetic Narcotics-Manufactured Narcotics Which Can Cause True Drug Addiction (Demerol, Methadone)	g	Male	3	3	2	7	5	5		39	34	19	23	18	7	3		2	170				
		Female	1	5			2	2		8	5	6	10	2	2	1			44	194	13	2	6
Other Dangerous Non-Narcotic Drugs (Barbiturates, Benzedrine)	h	Male			3	2	1	1		1	1	1	1	1					11				
		Female							2		2	1							5	15	1		
Gambling Total	19	Male	0	4	2	0	0	0	0	0	0	0	1	0	0	0	0	0	7				
		Female	0	6	3	0	0	0	0	0	0	0	0	0	0	0	0	0	9	13	3	0	0
Bookmaking (Horses and Sports Book)	a	Male																	0				
		Female																	0				
Numbers and Lottery	b	Male																	0				
		Female																	0				
All Other Gambling	c	Male		4	2							1							7				
		Female		6	3														9	13	3		
Offenses Against Family and Children	20	Male	4	6	3	2	5	2	2	11	11	10	3	5	5	1	2	1	73				
		Female	2	1	1	1	1	4	2	9	4	5	2	3	3	1			39	98	8	3	3
Driving Under the Influence	21	Male	14	27	25	34	43	39	46	130	109	101	103	79	57	30	13	14	864				
		Female	4	3	1	16	13	10	10	29	32	36	28	16	16	5	2	5	226	967	71	21	31
Liquor Laws	22	Male	42	36	38	5	9	6	9	26	25	28	35	39	30	10	10	3	351				
		Female	8	8	18	2		1	2	3	3	3	13	5	7	1	1		75	333	68	18	6
Drunkenness	23	Male	1			1				1			2						5				
		Female											1						1	4		2	
Disorderly Conduct	24	Male		5	4	11	5	8	5	34	13	16	15	5	8	5	4	1	139				
		Female		3		1	1	2	1	4	2	2	4	2		1			23	129	27	2	4
Vagrancy	25	Male	3		2	2	5			3	5	6	9	14	19	16	4	1	94				
		Female					1				4		2	1	2		1		11	79	24	1	1
All Other Offenses (except Traffic) Total	26	Male	80	104	108	122	129	108	112	545	416	433	514	406	221	88	35	34	3455				
		Female	39	57	58	87	63	77	74	223	145	142	112	96	35	16	3	3	1230	3274	1278	59	73
Suspicion	27	Male																	0				
		Female																	0				
GRAND TOTAL			432	525	477	513	500	490	465	1962	1439	1370	1371	1077	604	246	104	100	11675	8540	2685	167	282

AGE, SEX, AND RACE OF PERSONS CHARGED

December 2006

18 Years of age and under

(Count all Offences even if the Arrest is based on only one charge)

CLASSIFICATION OF OFFENSES	SEX	AGE							Total Under 18	RACE				
		Under 10	10-12	13-14	15	16	17	White		Black	American Indian or Alaskan Native	Asian or Pacific Islander		
Murder and Nonnegligent Manslaughter	01a	Male					1		1					
		Female						0		1				
Manslaughter by Negligence	01b	Male							0					
		Female							0					
Forcible Rape	02	Male		1			1		2					
		Female							0	2				
Robbery	03	Male			4	2	9	5	20					
		Female							0	13	7			
Aggravated Assault (Return A-4a-d)	04	Male			3	6	1	4	14					
		Female		1	2	1			4	11	5	1	1	
Burglary--Breaking or Entering	05	Male		2	8	5	6	7	28					
		Female			4	3	1	1	9	19	16	1	1	
Larceny--Theft (except Motor Vehicle Theft)	06	Male	1	14	47	31	37	37	167					
		Female	1	8	28	30	22	23	112	210	60		9	
Motor Vehicle Theft	07	Male	2		2	3	5	2	14					
		Female			1				1	11	3		1	
Other Assaults (Return A-4e)	08	Male	2	12	32	15	13	15	89					
		Female		4	18	5	9	6	42	103	21	5	2	
Arson	09	Male	1	9	12	5	7	4	38					
		Female	1		6	3	2		12	28	22			
Forgery & Counterfeiting	10	Male							0					
		Female						1	1		1			
Fraud	11	Male			1		1	2	4					
		Female				2		1	3	6	1			
Embezzlement	12	Male							3					
		Female						1	1	3	1			
Stolen Property; Buying, Receiving, Possessing	13	Male		1	3	4	5	7	20					
		Female				1			1	14	6	1		
Vandalism	14	Male	3	18	23	17	13	9	83					
		Female		18	5	1	1		25	84	20	1	3	
Weapons; Carrying, Possessing, etc.	15	Male	1	4	10	4	11	9	39					
		Female							0	28	10		1	
Prostitution and Commercialized Vice	16	Male							0					
		Female				1			1		1			
Sex Offenses (except Forcible Rape and Prostitution)	17	Male		1	9	1	1	1	13					
		Female							0	13				
Drug Abuse Violations		Male	0	3	8	17	19	30	77					
Grand Total	18	Female	0	1	6	7	10	3	27	82	18	2	2	
(1) Sale/Manufacturing Subtotal	180	Male	0	2	2	1	3	5	13					
		Female	0	0	3	1	3	1	8	17	3	0	1	
Opium or Cocaine and Their Derivatives (Morphine, Heroin, Codeine)	a	Male							1	1				
		Female							0	1				
Marijuana	b	Male		1	2	1	2	4	10					
		Female			2	1	2	1	6	13	3			
Synthetic Narcotics-Manufactured Narc Cause True Drug Addiction (Der	c	Male		1			1		2					
		Female					1		1	2			1	
Other Dangerous Non-Narcotic Drugs (Barbiturates, Benzadrine	d	Male							0					
		Female			1				1	1				
(2) Possession - Subtotal	185	Male	0	1	6	16	16	25	64					
		Female	0	1	3	6	7	2	19	65	15	2	1	
Opium or Cocaine and Their Derivatives (Morphine, Heroin, Codeine)	e	Male							3	3				
		Female							0	1	2			
Marijuana	f	Male		1	5	13	16	21	56					
		Female		1	3	5	7	1	17	58	12	2	1	
Synthetic Narcotics-Manufactured Narc Cause True Drug Addiction (Der	g	Male				1			1	1	1			
		Female				1			1	1	1			
Other Dangerous Non-Narcotic Drugs (Barbiturates, Benzadrine	h	Male			1	2			1	4				
		Female							1	1	5			

CLASSIFICATION OF OFFENSES		SEX	Under						Total Under 18	RACE			
			10	10-12	13-14	15	16	17		White	Black	American Indian or Alaskan Native	Asian or Pacific Islander
Gambling Total	19	Male	0	0	0	1	0	0	1				
		Female	0	0	0	1	1	1	3	2	2	0	0
Bookmaking (Horses and Sports Book)	a	Male							0				
		Female							0				
Numbers and Lottery	b	Male							0				
		Female							0				
All Other Gambling	c	Male				1			1				
		Female				1	1	1	3	2	2		
Offenses Against Family and Children	20	Male		4			1		5				
		Female			1		1	1	3	8			
Driving Under the Influence	21	Male	1			1	1	2	5				
		Female				1			1	5		1	
Liquor Laws	22	Male	2	1	16	15	29	26	89				
		Female			7	4	12	10	33	109	6	5	2
Drunkenness	23	Male			1	3	2		6				
		Female			2	2		1	5	11			
Disorderly Conduct	24	Male		6	17	6	8	8	45				
		Female		2	5	3	5	3	18	40	19	2	2
Vagrancy	25	Male							0				
		Female							0				
All Other Offenses (except Traffic) Total	26	Male	3	21	45	46	38	43	196				
		Female		5	28	23	14	15	85	239	31	8	3
Suspicion	27	Male			1	1		1	3				
		Female							0	3			
Curfew and Loitering Law Violati	28	Male	1	3	17	25	18	22	86				
		Female		1	16	16	15	12	60	131	13	1	1
Runaway	29	Male		3	7	8	12	6	36				
		Female		3	9	21	16	15	64	87	8	2	3
GRAND TOTAL			19	146	404	341	348	337	1595	1262	272	30	31



Nevada UCR Footnotes / Exceptions

December 2006

Table 1

--Nevada figures are annualized projections.

--"Assault" does not include simple assaults to allow direct comparison between the Nevada rate and the National rate for this Index offense. See Table 8 for a count of all assaults.

Table 2

--The LV Fire Department reports "Arson" offenses for the City of Las Vegas. The population figure for this agency represents jurisdiction and is not added to the county total. Similarly, the School District Police Departments in Clark and Washoe Counties are not added to county population estimates as they represent persons served (student enrollment plus staff.)

--Assault data in this table includes ALL assaults (aggravated and simple) reported for the current month.

--County crime rates are calculated following subtraction of populations of jurisdictions failing to report.

Table 3

-- In the "Nevada vs National Index Crime and Clearance Rates" sections, the "Assaults" numbers do not include simple assaults following FBI guidelines. Therefore, they may be compared directly to National rates.

-- National crime rate figures are the latest available for comparative use (2005). Nevada figures are annualized projections.

Table 13

--At various times, property values recovered will exceed values stolen for the current reporting period.

General Notes:

- The following agency did not submit a report for this month:

Storey County Sheriff Office

-- Any late reports not submitted in time for this publication will be incorporated in to the year-to-date totals in subsequent reports.