



UNIFORM CRIME REPORTING PROGRAM
UCR STATISTICAL DATA VERIFICATION FORM

As an agency administrator or designee for the _____, I have
(Name of Agency)
reviewed the UCR monthly statistics for **November 2006** which includes all UCR data submitted year to date. Based upon my or my designee's review and validation of same, I find that:

All data contained in the report for my agency is accurate and complete and may be released and made part of UCR publications for future distribution to the public and other interested UCR data subscribers.

Data contained in the report is inaccurate or incomplete and may not be published or released at this time. (If this choice is selected, please provide the reason in the space provided below.)

Reason: _____

The corrected data will be supplied to the UCR Program by: _____.
(Date)

This document must be signed and mailed to the Uniform Crime Reporting Program, 808 W. Nye Lane, Carson City, Nevada 89703 or faxed to (775) 684-6266 by **March 30, 2007**.

Signature of Agency Administrator (or designee)

Name/Title of Agency Administrator (print or type)

Agency's Name/Location

Date



Disclaimer: The following information is preliminary and cannot be certified until it is published in the annual report, Crime and Justice in Nevada, which will be available after July 1, 2007.



Monthly Report



**November
2006**



**Phil Galeoto, Director
Department of Public Safety**

**Capt Philip K. O'Neill, Division Chief
Records and Identification Bureau**

**Josh Porter, Statistician II
Pam Sebring, Administrative Assistant IV
Sherri Sharp, Administrative Assistant II**

**Prepared by:
Records and Identification Bureau
Uniform Crime Reporting
808 W. Nye Lane
Carson City, Nevada 89703
(775) 684-6262**



Nevada UCR Definitions / Explanations

Uniform Crime Reporting Program

The UCR program is a nationwide, cooperative, statistical effort by over 17,000 city, county and state law enforcement agencies that voluntarily report data on crimes brought to their attention. Law enforcement agencies active in the national program represent 95% of the total population of the United States. While the program's primary objective is to generate a reliable set of crime statistics for use in law enforcement administration, operation and management, its data has over the years become one of the country's leading social indicators.

In Nevada, 39 agencies are currently reporting UCR data to the statewide program representing nearly 99% of its population. Rather than submitting directly to the FBI, local agencies must submit crime data to the state UCR Repository, which compiles, analyzes and submits copies of the reports to the FBI. The Nevada UCR Program prides itself on its responsiveness to local contributing agencies that previously received limited feedback for their efforts. The Nevada program is also responsible for producing and distributing periodic reports of the information contained in its database. As its database has grown, the program's utility has become even more apparent.

Eight offenses serve as an index for gauging fluctuations in overall volumes and rates of crime. Known collectively as the " Crime Index, " these offenses include *the violent crimes of murder, rape, robbery and assault and the property crimes of burglary, larceny, motor vehicle theft and arson*. These offenses were selected as a grouped measuring device because they represent the most common crime problems. They are all serious crimes; either by their very nature or due to the volume and frequency with which they occur.

Index Crimes Definitions

Murder and Non-negligent Manslaughter

Murder and non negligent manslaughter, as defined in the Uniform Crime Reporting Program, is the willful (non-negligent) killing of a human being by another.

The classification of this offense, as for all other Crime Index offenses, is based solely on police investigation as opposed to the determination of a court, medical examiner, coroner, jury or other judicial entity. Not included in the count for this offense classification are deaths caused by negligence, suicide or accident, justifiable homicides and attempts to murder or assaults to murder. These are scored as aggravated assaults.



Nevada UCR Definitions / Explanations

Forcible Rape

Forcible rape, as defined in the program, is the carnal knowledge of a female forcibly and against her will. Assaults or attempts to commit rape by force or threat of force are also included; however, statutory rape (without force) and other sex offenses are excluded.

Robbery

Robbery is the taking or attempting to take anything of value from the care, custody or control of a person or persons by force or threat of force or violence and/or by putting the victim in fear.

Aggravated Assault

Aggravated assault is an unlawful attack by one person upon another for the purpose of inflicting severe or aggravated bodily injury. This type of assault is usually accompanied by the use of a weapon or by means likely to produce death or great bodily harm. Attempts are included since it is not necessary that an injury result when a gun, knife or other weapon is used which could and probably would result in serious personal injury if the crime were successfully completed

Burglary

The Uniform Crime Reporting Program defines burglary as the unlawful entry of a structure to commit a felony or theft. The use of force to gain entry is not required to classify an offense as burglary. Burglary in this program is categorized into three sub classifications: forcible entry, unlawful entry where no force is used and attempted forcible entry.

Larceny-Theft

Larceny-theft is the unlawful taking, carrying, leading, or riding away of property from the possession or constructive possession of another. It includes crimes such as shoplifting, pocket picking, purse-snatching, thefts from motor vehicles, thefts of motor vehicle parts and accessories, and bicycle thefts, etc., in which no use of force, violence, or fraud occurs. In the UCR Program, this crime category does not include embezzlement, "con" games, forgery, and worthless checks. Motor vehicle theft is also excluded from this category inasmuch as it is a separate Crime Index offense.

Motor Vehicle Theft

Defined as the theft or attempted theft of a motor vehicle, this offense category includes the stealing of automobiles, trucks, buses, motorcycles, motor scooters, snowmobiles, etc. The definition excludes the taking of a motor vehicle for temporary use by those persons having lawful access.



Nevada UCR Definitions / Explanations

Arson

Arson is defined by the Uniform Crime Reporting Program as any willful or malicious burning or attempt to burn, with or without intent to defraud, a dwelling house, public building, a motor vehicle or aircraft, personal property of another, etc. Only fires determined through investigation to have been willfully or maliciously set are classified as arsons. Fires of suspicious or unknown origins are excluded.

Population Estimates

State, county and incorporated city population estimates are prepared and reviewed prior to the end of each calendar year for certification by the governor by March 1. The Nevada Department of Taxation and Nevada State Demographer, Bureau of Business and Economic Research, College of Business Administration, University of Nevada, Reno, prepares these estimates.

Crime Rates

Crime rates involve the number of Index Crimes per unit of population, usually per 100,000 persons. Because Nevada has such a low population, a rate per 1,000 persons is used to reflect a more realistic volume. No attempt is made to incorporate transient populations or other factors that contribute to the ratio and types of crime in given areas. Any effort to make comparisons of crime rates between areas should be tempered by these population and environmental variables.

Crime rates are one of the most meaningful statistical elements. Computation of crime rates per 1,000 population is achieved by dividing the community's population by 1,000, then dividing the number of offenses in each class by that number. The answer is the number of offenses per 1,000 population and is the crime rate for that particular offense. In Table 2, the County Total Crime Rate is computed after subtracting the population figure for all non-reporting agencies for the current month.

The index offense "Aggravated Assault" is an item of special interest to users of Nevada's UCR report. In Tables 1 & 3, where Nevada and National crime rates are compared, "simple assaults" are subtracted from the total of all assaults following FBI UCR rules, thus allowing for direct comparison. However, total assaults (simple and aggravated) are also presented in the Nevada report. This is because the Nevada UCR staff believes this figure is an important indicator of risk for citizens and it presents a more balanced picture of this portion of the crime index to law enforcement personnel.

The Federal Bureau of Investigation, Uniform Crime Reporting Section, publishes national rates.

Clearance Rates

The percentage of crimes cleared is obtained by dividing the number of offenses cleared by the number of offenses known. This number is then multiplied by 100.

Nevada--Statewide Summary--UCR Index Crimes

November 2006

Offense	Crimes this Month	# Cleared this Month	% Cleared this Month	Crimes this YTD	# Cleared this YTD	% Cleared this YTD	November Crimes 2005	November Cleared 2005	% November Cleared 2005	2006 NV Rate / 1,000 (Proj) *	2006 NV Rate / 1,000	2005 Natl. Rate / 1,000
Murder	21	23	110	212	144	68	15	10	67	0.09	0.08	0.06
Rape	94	13	14	1,010	252	25	80	16	20	0.44	0.42	0.32
Robbery	620	105	17	6,288	1,118	18	437	59	14	2.72	2.14	1.41
Assault *	760	316	42	9,428	3,834	41	731	284	39	4.08	3.63	2.91
Burglary	2,082	214	10	22,639	2,094	9	1,994	379	19	9.80	10.07	7.27
Larceny	4,362	830	19	45,838	8,464	18	4,485	895	20	19.85	22.83	22.86
MV Theft	2,075	203	10	24,860	2,382	10	2,620	243	9	10.77	9.86	4.17
Arson	41	9	22	740	157	21	66	9	14	0.32	0.30	0.27
Total	10,055	1,713	17	111,015	18,445	17	10,428	1,895	18	48.08	49.33	39.27

* The projected Crime Rate for Assaults is computed after subtracting Simple Assaults from the total for all Assaults following FBI guidelines. Therefore, this rate may be compared directly to the National Rate. See Table 3 and the "Footnotes/Exceptions page for further information.

Nevada UCR - - Monthly Crime/ Clearance Summary - - All Crimes

Contributing Agency	Est. Pop	Murder		Rape		Robbery		Assault		Burglary		Larceny		MV Theft		Arson		Total Crimes	Crime Rate	Clearances	Clearance Rate
Carson County																		November 2006			
Carson SO	57,104	0	0	0	1	2	1	77	41	30	9	68	12	18	7	2	1	197	3.45	72	36.5%
County Total	57,104	0	0	0	1	2	1	77	41	30	9	68	12	18	7	2	1	197	3.45	72	36.5%
Churchill County																					
Churchill SO	18,246	1	1	0	0	0	0	6	13	6	4	9	8	2	3	1	1	25	1.37	30	120.0%
Fallon PD	8,339	0	0	0	0	0	0	19	11	6	2	25	4	1	1	0	0	51	6.12	18	35.3%
County Total	26,585	1	1	0	0	0	0	25	24	12	6	34	12	3	4	1	1	76	2.86	48	63.2%
Clark County																					
Boulder PD	15,203	0	0	0	0	0	0	3	2	13	0	8	1	0	0	0	0	24	1.58	3	12.5%
Clark Co. Schools P	312,995	0	0	0	0	5	2	108	57	29	5	110	17	3	0	3	0	258	0.82	81	31.4%
Henderson	241,134	0	0	2	1	5	4	207	139	123	42	288	62	96	3	9	2	730	3.03	253	34.7%
LV Metro PD	1,505,401	13	6	68	5	501	76	2,190	831	1,186	64	2,306	442	1,516	139	11	0	7,791	5.18	1,563	20.1%
LV Fire Dept*																5	3	5	N/A	3	60.0%
Mesquite	16,423	0	0	1	0	0	0	8	6	4	0	23	7	2	1	0	0	38	2.31	14	36.8%
North Las Vegas PE	18,219	3	0	8	2	52	9	285	137	239	18	308	42	224	8	4	0	1,123	61.64	216	19.2%
Taxicab Authority		0	0	0	0	3	0	5	3	0	0	23	1	0	0	0	0	31	0.00	4	12.9%
UNLV PD*	26,345	0	0	0	0	1	0	3	1	4	0	26	1	7	0	0	0	41	1.56	2	4.9%
County Total	1,796,380	16	6	79	8	567	91	2,809	1,176	1,598	129	3,092	573	1,848	151	32	5	10,041	5.59	2,139	21.3%
Douglas County																					
Douglas SO	50,108	1	1	2	0	0	0	32	18	14	1	56	8	3	1	1	0	109	2.18	29	26.6%
County Total	50,108	1	1	2	0	0	0	32	18	14	1	56	8	3	1	1	0	109	2.18	29	26.6%

*Population figure not included in county total
Table 2

Nevada UCR - - Monthly Crime/ Clearance Summary - - All Crimes

Contributing Agency	Est. Pop	Murder		Rape		Robbery		Assault		Burglary		Larceny		MV Theft		Arson		Total Crimes	Crime Rate	Clearances	Clearance Rate
Elko County																		November 2006			
Elko SO	22,627	0	0	1	1	0	0	12	9	4	1	3	0	1	0	0	0	21	0.93	11	52.4%
Carlin PD	2,261	0	0	0	0	0	0	5	4	0	0	0	0	0	0	0	0	5	2.21	4	80.0%
Elko PD	17,850	0	0	0	0	0	0	28	12	6	2	23	3	1	0	0	0	58	3.25	17	29.3%
WestWendover PD	4,848	0	0	0	0	0	0	4	4	5	3	5	3	2	2	0	0	16	3.30	12	75.0%
County Total	47,586	0	0	1	1	0	0	49	29	15	6	31	6	4	2	0	0	100	2.10	44	44.0%
Esmeralda County																					
Esmeralda SO	1,276	0	0	0	0	0	0	0	0	0	0	0	0	0	0	0	0	0	0.00	0	0.0%
County Total	1,276	0	0	0	0	0	0	0	0	0	0	0	0	0	0	0	0	0	0.00	0	0.0%
Eureka County																					
Eureka SO	1,485	0	0	0	0	0	0	0	0	1	1	3	1	0	0	0	0	4	2.69	2	50.0%
County Total	1,485	0	0	0	0	0	0	0	0	1	1	3	1	0	0	0	0	4	2.69	2	50.0%
Humboldt County																					
Humboldt SO	9,892	0	0	0	0	0	0	2	2	1	0	0	0	1	1	0	0	4	0.40	3	75.0%
Winnemucca PD	7,401	0	0	0	0	0	0	16	13	2	1	3	1	1	1	0	0	22	2.97	16	
County Total	17,293	0	0	0	0	0	0	18	15	3	1	3	1	2	2	0	0	26	1.50	19	73.1%

*Population figure not included in county total
Table 2

6
Assault data includes ALL assaults (aggravated and simple).

Nevada UCR - - Monthly Crime/ Clearance Summary - - All Crimes

Contributing Agency	Est. Pop	Murder		Rape		Robbery		Assault		Burglary		Larceny		MV Theft		Arson		Total Crimes	Crime Rate	Clearances	Clearance Rate
Lander County																		November 2006			
Lander SO	5,509	0	0	1	0	0	0	14	12	0	0	2	0	1	0	0	0	18	3.27	12	66.7%
County Total	5,509	0	0	1	0	0	0	14	12	0	0	2	0	1	0	0	0	18	3.27	12	66.7%
Lincoln County																					
Lincoln SO	3,886	0	0	0	0	0	0	1	0	2	0	4	0	1	0	0	0	8	2.06	0	0.0%
County Total	3,886	0	0	0	0	0	0	1	0	2	0	4	0	1	0	0	0	8	2.06	0	0.0%
Lyon County																					
Lyon SO	45,880	0	0	0	0	0	0	59	27	19	0	41	9	4	0	1	0	124	2.70	36	29.0%
Yerington PD	2,980	0	0	0	0	0	0	6	1	9	5	3	6	0	0	0	0	18	6.04	12	66.7%
County Total	48,860	0	0	0	0	0	0	65	28	28	5	44	15	4	0	1	0	142	2.91	48	33.8%
Mineral County																					
Mineral SO	4,629	0	0	0	0	0	0	5	5	1	1	3	1	1	0	0	0	10	2.16	7	70.0%
County Total	4,629	0	0	0	0	0	0	5	5	1	1	3	1	1	0	0	0	10	2.16	7	70.0%
Nye County																					
Nye SO	41,302	1	1	0	0	0	0	53	52	30	15	49	17	15	9	0	0	148	3.58	94	63.5%
County Total	41,302	1	1	0	0	0	0	53	52	30	15	49	17	15	9	0	0	148	3.58	94	63.5%

*Population figure not included in county total
Table 2

Nevada UCR - - Monthly Crime/ Clearance Summary - - All Crimes

Contributing Agency	Est. Pop	Murder		Rape		Robbery		Assault		Burglary		Larceny		MV Theft		Arson		Total Crimes	Crime Rate	Clearances	Clearance Rate
Pershing County																		November 2006			
Pershing SO	4,373	0	0	0	0	0	0	0	0	0	0	0	0	0	0	0	0	0	0.00	0	0.0%
Lovelock PD	2,363	0	0	0	0	0	0	6	7	1	0	2	2	1	1	0	0	10	4.23	10	100.0%
County Total	6,736	0	0	0	0	0	0	6	7	1	0	2	2	1	1	0	0	10	1.48	10	100.0%
Storey County																					
Storey	4,012	0	0	0	0	0	0	0	0	0	0	0	0	0	0	0	0	0	0.00	0	0.0%
County Total	4,012	0	0	0	0	0	0	0	0	0	0	0	0	0	0	0	0	0	0.00	0	0.0%
Washoe County																					
Washoe SO	101,491	0	0	0	0	0	0	76	38	47	6	72	10	17	1	1	1	213	2.10	56	26.3%
Reno PD	206,735	2	14	10	1	40	7	355	187	218	14	665	140	120	14	2	0	1,412	6.83	377	26.7%
Sparks PD	85,618	0	0	1	2	11	6	98	58	79	19	194	23	30	8	1	1	414	4.84	117	28.3%
UNR PD*	16,671	0	0	0	0	0	0	1	0	1	0	21	1	1	0	0	0	24	1.44	1	4.2%
Washoe Co Schl PD	65,000	0	0	0	0	0	0	0	0	0	0	9	5	1	1	0	0	10	0.15	6	60.0%
TMCC PD*	13,563	0	0	0	0	0	0	0	0	0	0	0	0	0	0	0	0	0	0.00	0	0.0%
County Total	393,844	2	14	11	3	51	13	530	283	345	39	961	179	169	24	4	2	2,073	5.26	557	26.9%
White Pine County																					
White Pine SO	9,275	0	0	0	0	0	0	7	7	2	1	10	3	5	2	0	0	24	2.59	13	54.2%
County Total	9,275	0	0	0	0	0	0	7	7	2	1	10	3	5	2	0	0	24	2.59	13	54.2%
Grand Total	2,515,870	21	23	94	13	620	105	3,691	1,697	2,082	214	4,362	830	2,075	203	41	9	12,986	5.16	3,094	23.8%

*Population figure not included in county total
Table 2

Nevada UCR - - Monthly Crimes/Clearances Summary - - Index Crimes

November 2006

Est. Pop	Murder		Rape		Robbery		Assault		Burglary		Larceny		MV Theft		Arson		Total Crimes	Crime Rate	Total Clear	Clearance Rate	
Statewide Totals																					
(Crimes/Clearances)	2,518,870	21	23	94	13	620	105	760	316	2082	214	4362	830	2075	203	41	9	10055	3.99	1713	17.04

Nevada (Projected 2006) vs National (2005) Index Crime Rates

(per 1,000 population)

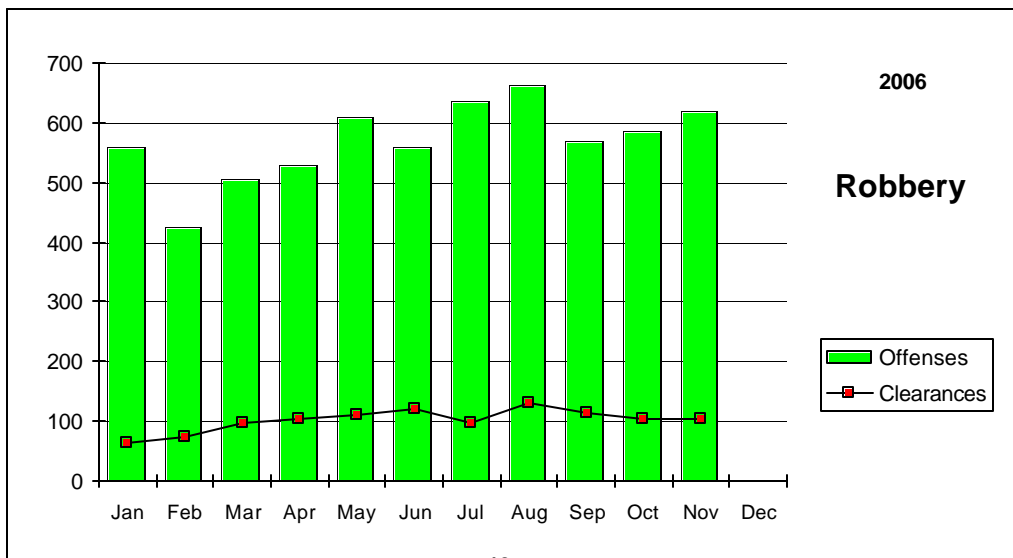
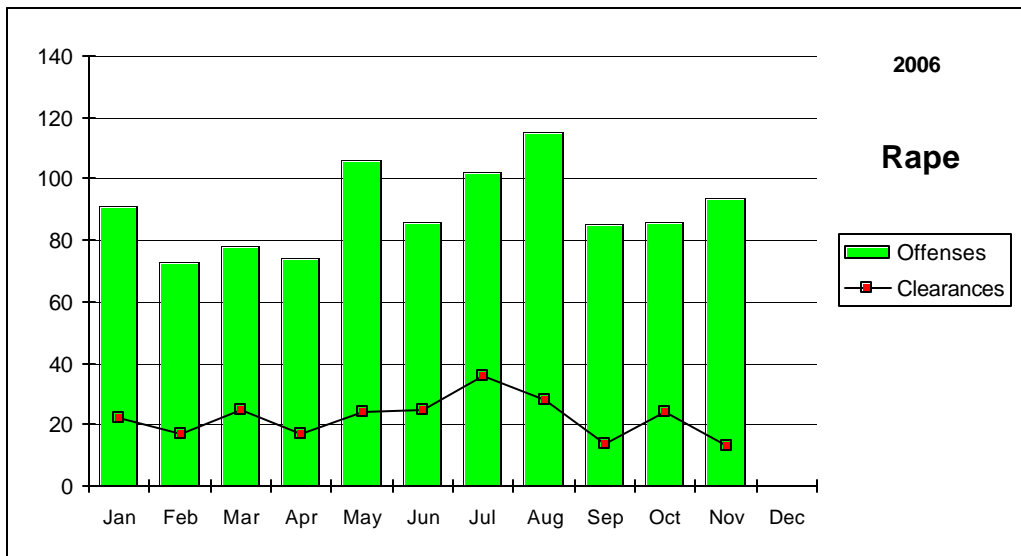
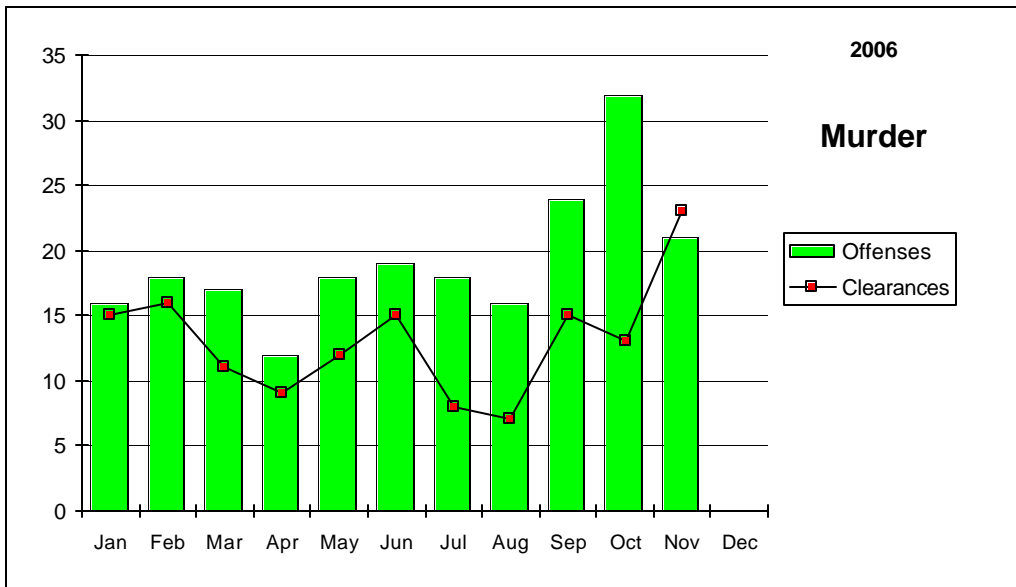
	Murder	Rape	Robbery	Assault	Burglary	Larceny	MV Theft	Arson	Crime Rate
Nevada	0.09	0.44	2.72	4.08	9.80	19.85	10.77	0.32	48.08
National	0.06	0.32	1.41	2.91	7.27	22.86	4.17	0.27	39.27

Nevada (Projected 2006) vs National (2005) Crime Clearance Rates

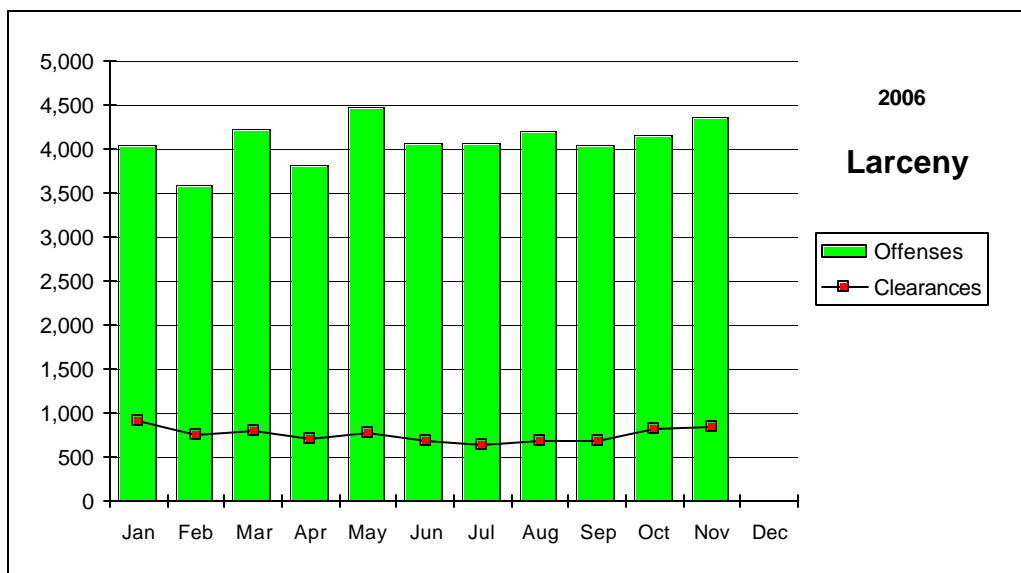
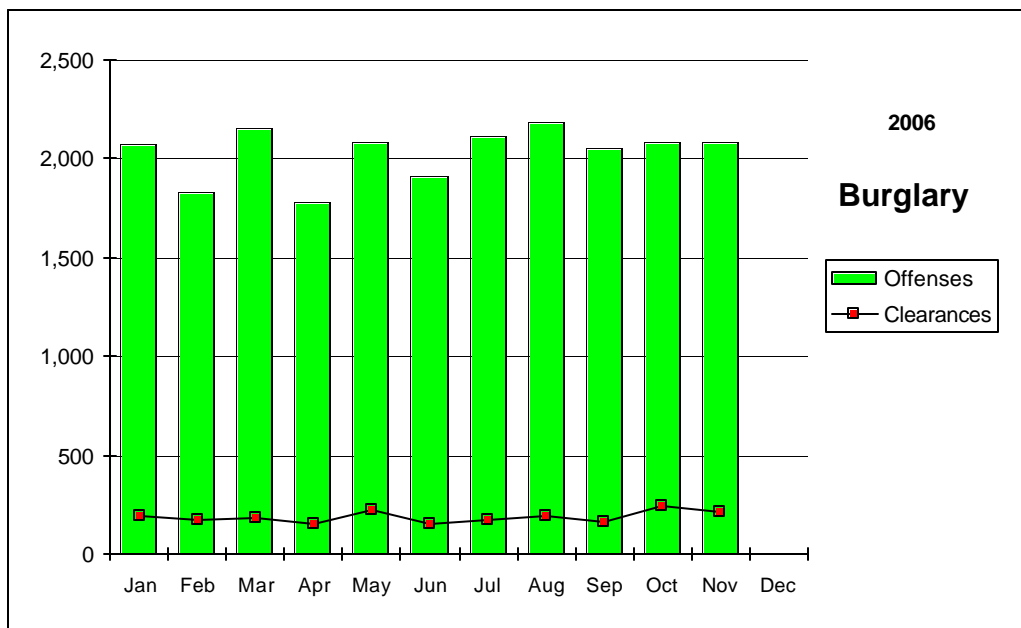
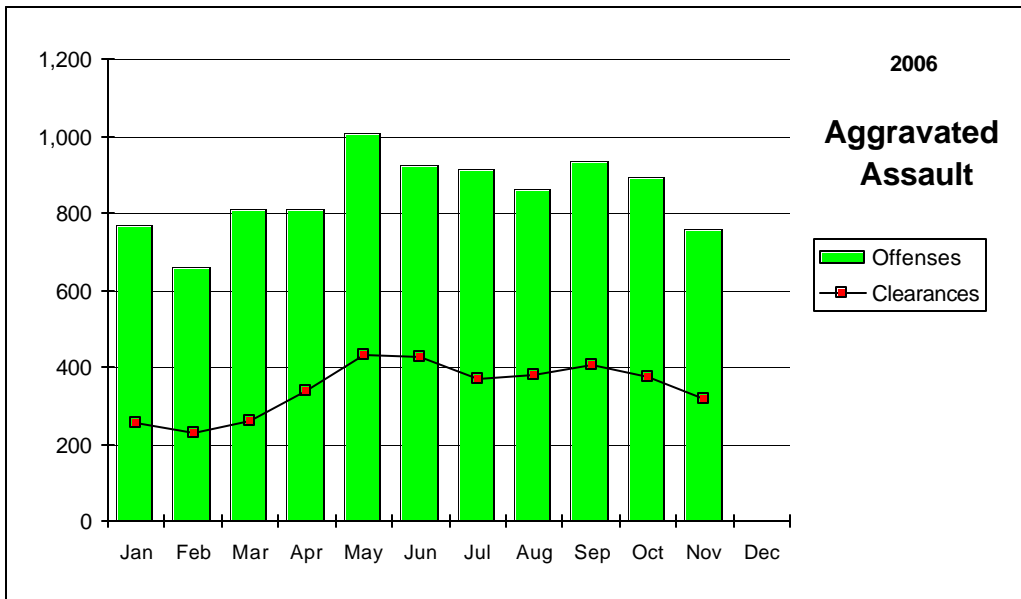
(by Percent)

	Murder	Rape	Robbery	Assault	Burglary	Larceny	MV Theft	Arson	Clear Rate
Nevada	67.9	25.0	17.8	40.7	9.2	18.5	9.6	21.2	21.2
National	62.1	41.3	25.4	55.2	12.7	18.0	13.0	17.9	19.7

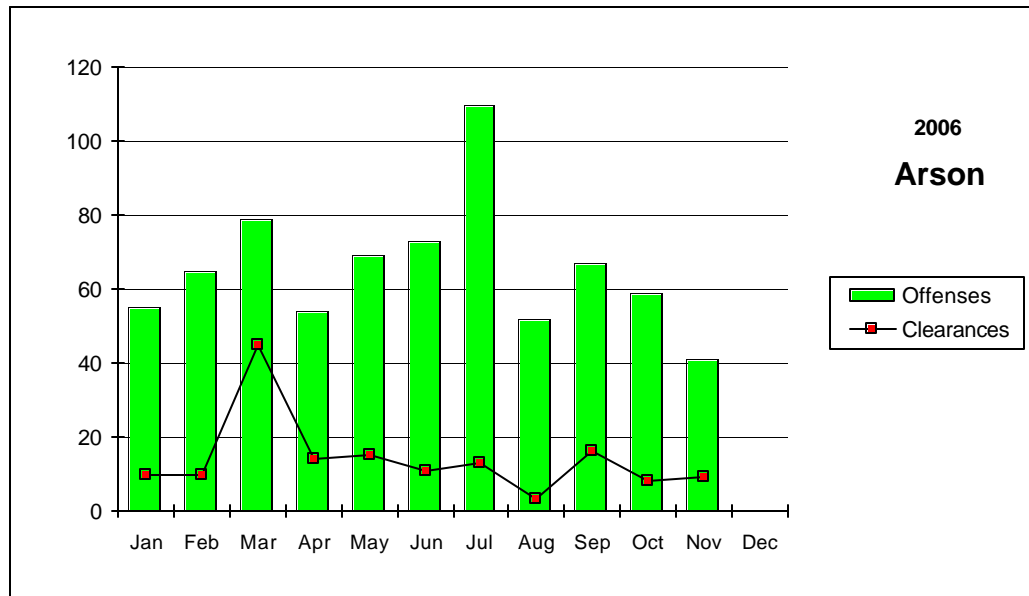
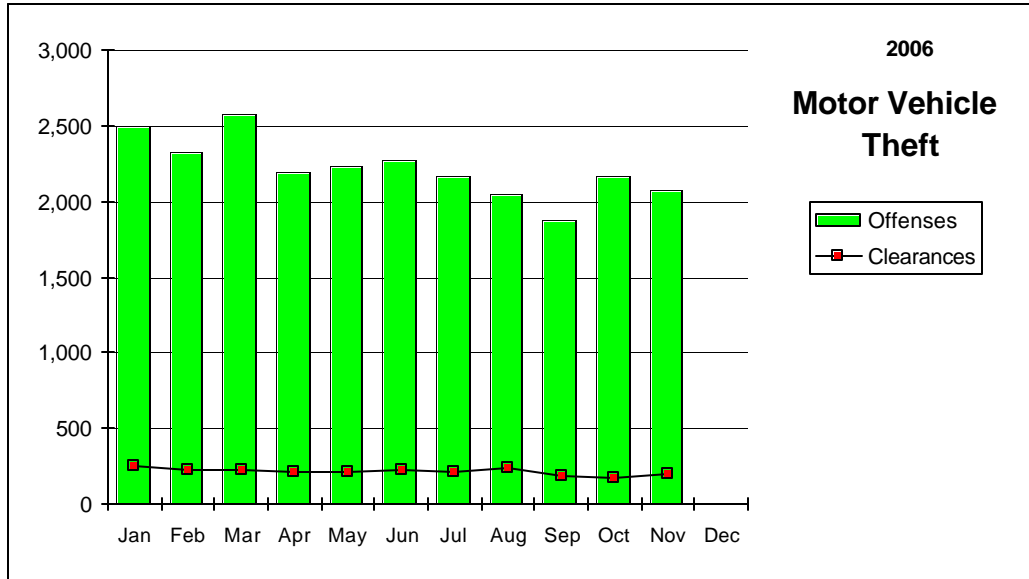
Nevada--Graphic Summary--UCR



Nevada--Graphic Summary--UCR



Nevada--Graphic Summary--UCR



Nevada--Murder--Incidence Level Variation--UCR

November 2006

Agency	November 2006 Offenses	November 2006 Cleared	YTD Offense s	2006 YTD Cleared	November 2005 Offenses	November 2005 Cleared	YTD Offense s	2005 YTD Cleared
Boulder	0	0	1	0	0	0	1	1
Carlin PD	0	0	0	0	0	0	0	0
Carson SO	0	0	3	1	0	0	2	3
Churchill SO	1	1	1	1	0	0	1	1
Clark Co Schl PD	0	0	0	0	0	0	0	0
Douglas SO	1	1	2	1	0	0	1	1
Elko PD	0	0	0	0	0	0	0	0
Elko SO	0	0	1	0	0	0	0	0
Esmeralda SO	0	0	0	0	0	0	0	0
Eureka SO	0	0	0	0	0	0	0	0
Fallon PD	0	0	0	0	0	0	2	2
Henderson PD	0	0	5	1	1	1	11	6
Humboldt SO	0	0	0	0	0	0	0	0
Lander SO	0	0	0	0	0	0	0	0
Lincoln SO	0	0	0	0	0	0	0	0
Lovelock PD	0	0	0	0	0	0	0	0
LV Fire Dept	0	0	0	0	0	0	0	0
LV Metro	13	6	142	96	13	7	136	103
Lyon SO	0	0	1	1	0	0	1	1
Mesquite PD	0	0	1	1	0	0	0	0
Mineral SO	0	0	0	0	0	0	0	0
NLVPD	3	0	20	8	0	0	16	6
Nye SO	1	1	3	4	0	0	3	3
Pershing SO	0	0	1	1	0	0	0	0
Reno PD	2	14	22	23	1	2	7	7
Sparks PD	0	0	3	4	0	0	4	3
Storey SO	0	0	0	0	0	0	0	0
Taxicab Authority	0	0	0	0	0	0	0	0
TMCC PD	0	0	0	0	0	0	0	0
UNLV PD	0	0	0	0	0	0	0	0
UNR PD	0	0	0	0	0	0	0	0
Washoe SO	0	0	4	0	0	0	0	0
Washoe Co Schl PD	0	0	0	0	0	0	0	0
Wendover PD	0	0	1	1	0	0	0	0
White Pine SO	0	0	0	0	0	0	1	0
Winnemucca PD	0	0	1	1	0	0	1	1
Yerington PD	0	0	0	0	0	0	0	0
TOTALS	21	23	212	144	15	10	187	138

Nevada--Rape--Incidence Level Variation-UCR

November 2006

Agency	November 2006 Offenses	November 2006 Cleared	2006 YTD Offenses	2006 YTD Cleared	November 2005 Offenses	November 2005 Cleared	2005 YTD Offenses	2005 YTD Cleared
Boulder	0	0	2	1	0	0	2	0
Carlin PD	0	0	0	0	0	0	1	0
Carson SO	0	1	2	1	1	0	3	0
Churchill SO	0	0	9	15	0	2	11	19
Clark Co Schl PD	0	0	3	0	0	0	5	0
Douglas SO	2	0	22	14	0	0	22	13
Elko PD	0	0	7	2	0	0	15	5
Elko SO	1	1	6	2	0	0	6	4
Esmeralda SO	0	0	0	0	0	0	0	0
Eureka SO	0	0	1	0	0	0	0	0
Fallon PD	0	0	0	0	0	0	0	0
Henderson PD	2	1	61	35	2	0	35	9
Humboldt SO	0	0	0	0	0	0	0	0
Lander SO	1	0	10	8	1	0	9	1
Lincoln SO	0	0	0	0	0	0	1	0
Lovelock PD	0	0	0	2	0	0	1	0
LV Fire Dept	0	0	0	0	0	0	0	0
LV Metro	68	5	670	105	42	4	576	94
Lyon SO	0	0	4	2	1	0	9	2
Mesquite PD	1	0	2	1	0	0	1	1
Mineral SO	0	0	1	1	0	0	1	1
NLVPD	8	2	53	20	7	2	54	21
Nye SO	0	0	9	7	1	0	10	8
Pershing SO	0	0	5	0	2	0	7	4
Reno PD	10	1	94	17	8	1	103	20
Sparks PD	1	2	37	14	11	4	56	26
Storey SO	0	0	0	0	0	0	0	0
Taxicab Authority	0	0	0	0	0	0	0	0
TMCC PD	0	0	0	0	0	0	0	0
UNLV PD	0	0	0	0	0	0	3	1
UNR PD	0	0	4	1	3	2	7	3
Washoe SO	0	0	0	0	0	0	2	0
Washoe Co Schl PD	0	0	0	0	0	0	0	0
Wendover PD	0	0	2	1	0	0	7	7
White Pine SO	0	0	4	2	0	0	3	1
Winnemucca PD	0	0	2	1	1	1	2	1
Yerington PD	0	0	0	0	0	0	1	3
TOTALS	94	13	1,010	252	80	16	953	244

Nevada--Robbery--Incidence Level Variation--UCR

November 2006

Agency	November 2006 Offenses	November 2006 Cleared	YTD Offenses	2006 YTD Cleared	November 2005 Offenses	November 2005 Cleared	YTD Offenses	2005 YTD Cleared
Boulder	0	0	3	1	1	0	2	1
Carlin PD	0	0	0	0	0	0	0	0
Carson SO	2	1	20	12	0	0	26	12
Churchill SO	0	0	0	0	0	0	1	1
Clark Co Schl PD	5	2	45	18	5	1	20	3
Douglas SO	0	0	1	0	1	1	16	7
Elko PD	0	0	7	2	0	0	7	3
Elko SO	0	0	0	0	0	0	4	3
Esmeralda SO	0	0	0	0	0	0	0	0
Eureka SO	0	0	0	0	0	0	0	0
Fallon PD	0	0	3	1	0	0	4	3
Henderson PD	5	4	72	15	11	2	119	25
Humboldt SO	0	0	1	1	0	0	1	1
Lander SO	0	0	2	0	1	0	3	1
Lincoln SO	0	0	0	0	0	0	0	0
Lovelock PD	0	0	0	0	0	0	0	0
LV Fire Dept	0	0	0	0	0	0	0	0
LV Metro	501	76	4,928	790	327	36	3,107	467
Lyon SO	0	0	5	2	0	0	8	3
Mesquite PD	0	0	2	1	0	0	4	3
Mineral SO	0	0	0	0	0	0	0	0
NLVPD	52	9	531	83	30	2	360	76
Nye SO	0	0	10	5	0	0	7	3
Pershing SO	0	0	0	0	0	0	1	1
Reno PD	40	7	485	130	44	7	369	107
Sparks PD	11	6	110	39	11	7	82	35
Storey SO	0	0	0	0	0	0	0	0
Taxicab Authority	3	0	34	7	4	2	0	0
TMCC PD	0	0	0	0	0	0	0	0
UNLV PD	1	0	1	0	0	0	4	1
UNR PD	0	0	0	0	0	0	3	1
Washoe SO	0	0	20	5	2	1	14	5
Washoe Co Schl PD	0	0	2	2	0	0	5	1
Wendover PD	0	0	2	1	0	0	4	3
White Pine SO	0	0	1	1	0	0	1	0
Winnemucca PD	0	0	3	2	0	0	4	2
Yerington PD	0	0	0	0	0	0	0	0
TOTALS	620	105	6,288	1,118	437	59	4,176	768

Nevada--Aggravated Assault--Incidence Level Variation--UCR

November 2006

Agency	November 2006 Offenses	November 2006 Cleared	YTD Offenses	2006 YTD Cleared	November 2005 Offenses	November 2005 Cleared	YTD Offenses	2005 YTD Cleared
Boulder	1	1	10	8	1	1	13	10
Carlin PD	3	2	30	24	3	2	22	12
Carson SO	19	10	161	100	17	16	251	130
Churchill SO	1	2	38	37	5	6	33	33
Clark Co Schl PD	10	5	54	25	8	1	56	33
Douglas SO	4	4	53	30	3	2	41	24
Elko PD	2	0	30	13	1	1	11	5
Elko SO	0	0	12	11	1	0	18	10
Esmeralda SO	0	0	3	3	0	0	2	1
Eureka SO	0	0	5	4	0	0	4	1
Fallon PD	2	1	14	12	2	0	16	7
Henderson PD	23	17	268	160	25	11	230	133
Humboldt SO	2	2	44	42	4	4	52	47
Lander SO	9	7	27	23	1	0	8	6
Lincoln SO	0	0	3	3	0	0	3	3
Lovelock PD	1	1	8	6	1	1	8	8
LV Fire Dept	0	0	0	0	0	0	0	0
LV Metro	442	146	6,177	2,029	487	137	4,814	1,501
Lyon SO	7	5	69	46	11	11	92	86
Mesquite PD	3	2	23	18	3	3	21	17
Mineral SO	0	0	6	6	0	0	6	6
NLVPD	118	41	942	424	46	25	806	421
Nye SO	5	5	96	84	2	2	83	78
Pershing SO	0	0	41	28	3	4	38	19
Reno PD	66	41	776	388	69	37	906	416
Sparks PD	12	8	199	137	15	9	183	124
Storey SO	0	0	0	0	0	0	0	0
Taxicab Authority	5	3	91	23	8	1	45	21
TMCC PD	0	0	0	0	0	0	0	0
UNLV PD	0	0	4	1	1	1	6	3
UNR PD	0	0	25	10	1	1	8	5
Washoe SO	21	10	165	90	11	6	171	83
Washoe Co Schl PD	0	0	10	10	0	0	9	4
Wendover PD	1	1	9	8	1	1	19	18
White Pine SO	1	1	23	21	1	1	25	22
Winnemucca PD	2	1	12	10	0	0	14	13
Yerington PD	0	0	0	0	0	0	1	1
TOTALS	760	316	9,428	3,834	731	284	8,015	3,301

Nevada--All Assaults--Incidence Level Variation--UCR

November 2006

Agency	November 2006 Offenses	November 2006 Cleared	2006 YTD Offenses	2006 YTD Cleared	November 2005 Offenses	November 2005 Cleared	2005 YTD Offenses	2005 YTD Cleared
Boulder	3	2	30	20	3	2	39	22
Carlin PD	5	4	33	26	3	2	32	21
Carson SO	77	41	787	399	76	46	737	419
Churchill SO	6	13	211	195	23	27	234	226
Clark Co Schl PD	108	57	744	400	92	26	835	463
Douglas SO	32	18	562	419	40	28	595	443
Elko PD	28	12	324	190	19	13	242	113
Elko SO	12	9	105	75	9	6	128	82
Esmeralda SO	0	0	5	5	1	1	11	10
Eureka SO	0	0	8	6	2	2	19	14
Fallon PD	19	11	194	138	23	12	254	179
Henderson PD	207	139	2,582	1,616	192	105	2,247	1,288
Humboldt SO	2	2	52	49	5	5	63	58
Lander SO	14	12	110	92	12	6	87	44
Lincoln SO	1	0	19	27	1	1	26	20
Lovelock PD	6	7	57	56	6	5	45	45
LV Fire Dept	0	0	0	0	0	0	0	0
LV Metro	2,190	831	25,177	8,583	1,889	550	22,525	7,672
Lyon SO	59	27	542	281	35	34	565	539
Mesquite PD	8	6	201	178	14	13	169	159
Mineral SO	5	5	58	58	4	4	44	37
NLVPD	285	137	3,199	1,688	210	135	3,074	1,830
Nye SO	53	52	639	619	34	32	510	490
Pershing SO	0	0	47	31	4	4	53	26
Reno PD	355	187	4,485	2,349	401	212	4,202	2,214
Sparks PD	98	58	1,277	837	108	70	1,272	812
Storey SO	0	0	31	19	5	2	34	12
Taxicab Authority	5	3	94	23	9	1	46	21
TMCC PD	0	0	3	1	0	0	1	0
UNLV PD	3	1	34	16	2	2	23	11
UNR PD	1	0	33	12	3	2	20	8
Washoe SO	76	38	919	506	80	46	951	529
Washoe Co Schl PD	0	0	74	73	12	12	69	32
Wendover PD	4	4	80	81	4	4	88	80
White Pine SO	7	7	87	79	9	8	113	106
Winnemucca PD	16	13	85	73	3	2	90	85
Yerington PD	6	1	34	30	9	11	52	54
TOTALS	3,691	1,697	42,922	19,250	3,342	1,431	39,495	18,164

Nevada--Burglary--Incidence Level Variation--UCR

November 2006

Agency	November 2006 Offenses	November 2006 Cleared	YTD Offenses	2006 YTD Cleared	November 2005 Offenses	November 2005 Cleared	YTD Offenses	2005 YTD Cleared
Boulder	13	0	100	9	8	0	120	17
Carlin PD	0	0	18	3	1	0	28	5
Carson SO	30	9	270	74	34	12	360	92
Churchill SO	6	4	96	31	5	8	99	42
Clark Co SchI PD	29	5	234	37	42	4	251	47
Douglas SO	14	1	195	45	29	3	224	47
Elko PD	6	2	128	22	9	1	109	21
Elko SO	4	1	85	15	7	1	95	7
Esmeralda SO	0	0	1	1	0	0	2	0
Eureka SO	1	1	8	2	3	0	6	1
Fallon PD	6	2	52	12	7	2	55	10
Henderson PD	123	42	1,445	231	129	12	1,432	158
Humboldt SO	1	0	11	4	3	3	17	12
Lander SO	0	0	37	27	2	0	48	7
Lincoln SO	2	0	8	6	0	0	16	6
Lovelock PD	1	0	16	14	4	3	18	8
LV Fire Dept	0	0	0	0	0	0	0	0
LV Metro	1,186	64	13,619	816	1,155	263	13,153	3,135
Lyon SO	19	0	191	28	15	5	221	32
Mesquite PD	4	0	14	4	1	0	17	5
Mineral SO	1	1	22	7	0	0	37	5
NLVPD	239	18	2,314	155	199	7	1,708	126
Nye SO	30	15	249	51	39	16	232	75
Pershing SO	0	0	26	3	4	1	32	11
Reno PD	218	14	1,911	154	154	13	1,733	167
Sparks PD	79	19	800	215	69	15	665	208
Storey SO	0	0	13	3	1	0	14	1
Taxicab Authority	0	0	0	0	1	0	1	0
TMCC PD	0	0	3	0	3	1	10	1
UNLV PD	4	0	60	2	6	1	75	4
UNR PD	1	0	13	1	2	0	29	5
Washoe SO	47	6	511	49	42	4	423	44
Washoe Co SchI PD	0	0	23	4	5	1	42	8
Wendover PD	5	3	48	15	4	1	48	14
White Pine SO	2	1	52	8	7	1	60	18
Winnemucca PD	2	1	32	19	4	1	39	17
Yerington PD	9	5	34	27	0	0	25	19
TOTALS	2,082	214	22,639	2,094	1,994	379	21,444	4,375

Nevada--Larceny--Incidence Level Variation--UCR

November 2006

Agency	November 2006 Offenses	November 2006 Cleared	2006 YTD Offenses	2006 YTD Cleared	November 2005 Offense	November 2005 Cleared	2005 YTD Offenses	2005 YTD Cleared
Boulder	8	1	117	9	11	0	124	5
Carlin PD	0	0	9	2	2	0	22	2
Carson SO	68	12	737	164	91	24	888	244
Churchill SO	9	8	133	49	13	8	143	64
Clark Co Schl PD	110	17	833	121	87	6	757	113
Douglas SO	56	8	675	121	54	11	720	203
Elko PD	23	3	395	35	27	4	407	40
Elko SO	3	0	84	10	9	0	92	4
Esmeralda SO	0	0	5	4	0	0	3	0
Eureka SO	3	1	11	2	0	0	7	3
Fallon PD	25	4	301	50	56	12	421	94
Henderson PD	288	62	3,304	537	308	52	3,312	729
Humboldt SO	0	0	28	12	2	2	42	17
Lander SO	2	0	49	29	3	2	76	12
Lincoln SO	4	0	28	5	3	1	19	4
Lovelock PD	2	2	17	12	0	0	25	16
LV Fire Dept	0	0	0	0	0	0	0	0
LV Metro	2,306	442	24,476	4,684	2,337	491	25,443	5,649
Lyon SO	41	9	407	68	35	12	479	80
Mesquite PD	23	7	249	70	24	3	264	60
Mineral SO	3	1	18	4	1	0	19	2
NLVPD	308	42	3,158	469	296	41	2,956	586
Nye SO	49	17	427	137	59	27	659	279
Pershing SO	0	0	11	2	3	1	43	6
Reno PD	665	140	6,440	1,354	635	143	6,891	1,684
Sparks PD	194	23	1,912	267	173	29	1,847	395
Storey SO	0	0	31	3	5	0	46	2
Taxicab Authority	23	1	387	13	90	1	231	10
TMCC PD	0	0	11	0	3	0	11	0
UNLV PD	26	1	231	14	13	0	212	13
UNR PD	21	1	148	4	12	0	139	5
Washoe SO	72	10	755	72	67	13	676	70
Washoe Co Schl PD	9	5	147	46	26	6	252	47
Wendover PD	5	3	125	31	19	2	141	45
White Pine SO	10	3	106	33	15	1	119	29
Winnemucca PD	3	1	59	19	6	3	94	42
Yerington PD	3	6	14	12	0	0	22	15
TOTALS	4,362	830	45,838	8,464	4,485	895	47,602	10,569

Nevada--MV Theft--Incidence Level Variation--UCR

November 2006

Agency	November 2006				November 2005			
	November 2006 Offenses	November 2006 Cleared	2006 YTD Offenses	2006 YTD Cleared	November 2005 Offenses	November 2005 Cleared	2005 YTD Offenses	2005 YTD Cleared
Boulder	0	0	21	1	4	0	45	0
Carlin PD	0	0	5	1	0	0	1	4
Carson SO	18	7	120	39	9	6	108	35
Churchill SO	2	3	16	8	4	3	27	14
Clark Co Schl PD	3	0	45	11	6	0	43	6
Douglas SO	3	1	59	36	8	6	56	40
Elko PD	1	0	49	6	0	0	31	1
Elko SO	1	0	17	2	1	0	22	7
Esmeralda SO	0	0	1	1	0	0	1	1
Eureka SO	0	0	4	1	0	0	0	0
Fallon PD	1	1	25	9	2	0	23	7
Henderson PD	96	3	1,346	36	143	2	1,306	50
Humboldt SO	1	1	5	4	1	0	6	4
Lander SO	1	0	7	6	0	0	4	1
Lincoln SO	1	0	9	5	-1	0	6	4
Lovelock PD	1	1	3	2	0	0	4	3
LV Fire Dept	0	0	0	0	0	0	0	0
LV Metro	1,516	139	18,183	1,657	1,922	170	18,169	1,843
Lyon SO	4	0	74	30	6	1	70	18
Mesquite PD	2	1	51	13	5	0	45	6
Mineral SO	1	0	5	2	1	0	5	1
NLVPD	224	8	2,429	99	249	9	2,252	112
Nye SO	15	9	163	74	12	7	138	92
Pershing SO	0	0	1	1	0	0	4	2
Reno PD	120	14	1,484	178	171	20	1,341	171
Sparks PD	30	8	408	75	44	8	403	97
Storey SO	0	0	2	0	2	1	7	1
Taxicab Authority	0	0	11	0	4	4	8	1
TMCC PD	0	0	0	0	0	0	0	0
UNLV PD	7	0	42	2	6	0	28	3
UNR PD	1	0	12	1	1	0	6	0
Washoe SO	17	1	201	48	12	2	218	35
Washoe Co Schl PD	1	1	1	1	1	0	2	0
Wendover PD	2	2	18	15	0	0	16	11
White Pine SO	5	2	30	13	2	2	16	10
Winnemucca PD	1	1	13	5	3	0	22	10
Yerington PD	0	0	0	0	2	2	2	2
TOTALS	2,075	203	24,860	2,382	2,620	243	24,435	2,592

Nevada--Arson--Incidence Level Variation--UCR

November 2006

Agency	November	November	2006		November	November	2005	
	2006	2006	2006 YTD	2006	2005	2005	2005 YTD	2005
	Offenses	Cleared	Offenses	Cleared	Offenses	Cleared	Offenses	Cleared
Boulder	0	0	3	0	0	0	2	0
Carlin PD	0	0	0	0	0	0	0	0
Carson SO	2	1	10	5	1	0	19	4
Churchill SO	1	1	3	3	0	0	3	1
Clark Co Schl PD	3	0	71	22	10	1	52	9
Douglas SO	1	0	7	4	0	0	4	1
Elko PD	0	0	8	1	0	0	7	1
Elko SO	0	0	3	1	1	0	1	0
Esmeralda SO	0	0	0	0	0	0	0	0
Eureka SO	0	0	0	0	0	0	0	0
Fallon PD	0	0	0	0	0	0	0	0
Henderson PD	9	2	82	15	5	2	91	31
Humboldt SO	0	0	1	1	0	0	2	1
Lander SO	0	0	0	0	0	0	0	0
Lincoln SO	0	0	1	2	0	0	1	1
Lovelock PD	0	0	0	0	0	0	0	0
LV Fire Dept	5	3	72	13	8	2	101	20
LV Metro	11	0	283	34	29	0	296	0
Lyon SO	1	0	17	4	0	0	6	3
Mesquite PD	0	0	0	0	0	0	0	0
Mineral SO	0	0	1	1	0	0	2	1
NLVPD	4	0	56	8	6	0	40	2
Nye SO	0	0	29	22	3	2	16	9
Pershing SO	0	0	0	0	0	0	0	0
Reno PD	2	0	35	3	1	1	48	4
Sparks PD	1	1	19	6	0	0	6	6
Storey SO	0	0	0	0	0	0	1	0
Taxicab Authority	0	0	0	0	0	0	0	0
TMCC PD	0	0	0	0	0	0	0	0
UNLV PD	0	0	1	0	0	0	2	1
UNR PD	0	0	0	0	0	0	0	0
Washoe SO	1	1	10	2	2	1	5	1
Washoe CO Scl PD	0	0	17	2	0	0	16	0
Wendover PD	0	0	3	2	0	0	1	0
White Pine SO	0	0	1	0	0	0	1	1
Winnemucca PD	0	0	7	6	0	0	1	1
Yerington PD	0	0	0	0	0	0	0	0
TOTALS	41	9	740	157	66	9	724	98

State of Nevada

Hate Crimes Reports for November 2006

#	Agency	ORI	Incident #	Date of Incident	UCR Offense	Location	Bias Motivation	Victim Type and Number	Offender Race and Number
1	LVMPD	NV0020100	061104-1431	11/4/2006	11-Destruction/Damage	20-Residence/Home	25-Anti-Other Religion	Individual-1	Unknown-00
2	LVMPD	NV0020100	061106-2990	11/6/2006	09-Simple Assault	20-Residence/Home	32-Anti-Hispanic	Individual-1	White-01
3	LVMPD	NV0020100	061110-0138	11/10/2006	04-Aggravated Assault	13-Highway/Road	33-Anti-Other Ethnicity	Individual-1	White-04
4	LVMPD	NV0020100	061110-1634	11/10/2006	11-Destruction/Damage	20-Residence/Home	41-Anti-Male Homosexual	Individual-3	Unknown-00
5	LVMPD	NV0020100	061111-2988	11/11/2006	03-Robbery	12-Grocery/Supermarket	11-Anti-White	Individual-6	Hispanic-02
6	LVMPD	NV0020100	061112-0746	11/12/2006	06-Larceny/Theft	20-Residence/Home	15-Anti-Pakistani	Individual-1	Unknown-00
7	LVMPD	NV0020100	061115-1353	11/15/2006	09-Simple Assault	20-Residence/Home	32-Anti-Hispanic	Individual-1	Black-3
8	LVMPD	NV0020100	061119-2131	11/19/2006	11-Destruction/Damage	20-Residence/Home	21-Anti-Jewish	Individual-1	Unknown-00
9	LVMPD	NV0020100	061119-2308	11/19/2006	11-Destruction/Damage	20-Residence/Home	21-Anti-Jewish	Individual-1	Unknown-00
10	LVMPD	NV0020100	061126-2776	11/26/2006	10-Intimidation	03-Bar/Nightclub	12-Anti-Black	Individual-1	White-1
11	LVMPD	NV0020100	061127-2225	11/27/2006	11-Destruction/Damage	22-School/College	12-Anti-Black	Business-1	Unknown-00
12	LVMPD	NV0020100	061128-2695	11/28/2006	10-Intimidation	25-Other/text messages	41-Anti-Male Homosexual	Individual-1	Unknown-01
13	WCSD	NV0161000	62696	11/9/2006	11-Destruction/Damage	22-School/College	15-Anti-Multi-Racial	Other-1	Unknown-00

Stolen/Recovered Property Report

November 2006

Property Type	Boulder PD	Carlin PD	Carson SO	Churchill SO	Clark Co Schi PD	Douglas SO	Elko PD	Elko SO	Esmeralda SO
Currency									
Stolen	\$400	\$0	\$13,826	\$396	\$10,365	\$15,251	\$1,100	\$50	\$0
Recovered	\$0	\$0	\$40	\$0	\$0	\$0	\$0	\$0	\$0
% Recovered	0.0%	0.0%	0.3%	0.0%	0.0%	0.0%	0.0%	0.0%	0.0%
Jewelry									
Stolen	\$1,839	\$0	\$7,015	\$0	\$1,150	\$195	\$0	\$4,700	\$0
Recovered	\$0	\$0	\$0	\$0	\$0	\$0	\$0	\$0	\$0
% Recovered	0.0%	0.0%	0.0%	0.0%	0.0%	0.0%	0.0%	0.0%	0.0%
Clothing									
Stolen	\$200	\$0	\$1,125	\$0	\$20	\$2,773	\$627	\$0	\$0
Recovered	\$0	\$0	\$0	\$0	\$0	\$159	\$390	\$0	\$0
% Recovered	0.0%	0.0%	0.0%	0.0%	0.0%	5.7%	62.2%	0.0%	0.0%
Motor Vehicle									
Stolen	\$0	\$0	\$178,680	\$9,500	\$32,000	\$77,000	\$500	\$1,000	\$0
Recovered	\$0	\$0	\$90,500	\$14,800	\$0	\$77,000	\$500	\$1,000	\$0
% Recovered	0.0%	0.0%	50.6%	155.8%	0.0%	100.0%	100.0%	100.0%	0.0%
Office Equipment									
Stolen	\$0	\$0	\$1,858	\$500	\$10,064	\$1,500	\$200	\$0	\$0
Recovered	\$0	\$0	\$0	\$0	\$0	\$0	\$0	\$0	\$0
% Recovered	0.0%	0.0%	0.0%	0.0%	0.0%	0.0%	0.0%	0.0%	0.0%
TV, VCR, Camera, Etc.									
Stolen	\$0	\$0	\$7,730	\$0	\$10,145	\$13,873	\$2,060	\$7,578	\$0
Recovered	\$0	\$0	\$954	\$0	\$150	\$735	\$500	\$6,684	\$0
% Recovered	0.0%	0.0%	12.3%	0.0%	1.5%	5.3%	24.3%	88.2%	0.0%
Firearm									
Stolen	\$600	\$0	\$3,850	\$3,635	\$0	\$0	\$0	\$0	\$0
Recovered	\$600	\$0	\$0	\$210	\$0	\$0	\$175	\$0	\$0
% Recovered	100.0%	0.0%	0.0%	5.8%	0.0%	0.0%	0.0%	0.0%	0.0%
Household Goods									
Stolen	\$0	\$0	\$4,070	\$0	\$5,400	\$544	\$105	\$0	\$0
Recovered	\$0	\$0	\$0	\$0	\$0	\$10	\$155	\$0	\$0
% Recovered	0.0%	0.0%	0.0%	0.0%	0.0%	1.8%	147.6%	0.0%	0.0%
Consumable Goods									
Stolen	\$0	\$0	\$31	\$10	\$26	\$152	\$1,288	\$48	\$0
Recovered	\$0	\$0	\$15	\$10	\$0	\$86	\$0	\$0	\$0
% Recovered	0.0%	0.0%	48.4%	100.0%	0.0%	56.6%	0.0%	0.0%	0.0%
Livestock									
Stolen	\$0	\$0	\$0	\$0	\$0	\$0	\$0	\$0	\$0
Recovered	\$0	\$0	\$0	\$0	\$0	\$0	\$0	\$0	\$0
% Recovered	0.0%	0.0%	0.0%	0.0%	0.0%	0.0%	0.0%	0.0%	0.0%
Misc.									
Stolen	\$25,780	\$0	\$523,711	\$4,498	\$83,689	\$18,002	\$7,064	\$650	\$0
Recovered	\$1,050	\$0	\$502,284	\$1,150	\$400	\$709	\$707	\$0	\$0
% Recovered	4.1%	0.0%	95.9%	25.6%	0.5%	3.9%	10.0%	0.0%	0.0%
TOTALS									
Stolen	\$28,819	\$0	\$741,896	\$18,539	\$152,859	\$129,290	\$12,944	\$14,026	\$0
Recovered	\$1,650	\$0	\$593,793	\$16,170	\$550	\$78,699	\$2,427	\$7,684	\$0
% Recovered	5.7%	0.0%	80.0%	87.2%	0.4%	60.9%	18.8%	54.8%	0.0%

Stolen/Recovered Property Report

November

Property Type	Eureka SO	Fallon PD	Henderson PD	Humboldt SO	Lander SO	Las Vegas Metro	Lincoln SO	Lovelock PD	Lyon SO
Currency									
Stolen	\$0	\$176	\$36,627	\$0	\$0	\$1,468,575	\$500	\$250	\$2,713
Recovered	\$0	\$0	\$0	\$0	\$0	\$2,870	\$0	\$0	\$300
% Recovered	0.0%	0.0%	0.0%	0.0%	0.0%	0.2%	0.0%	0.0%	11.1%
Jewelry									
Stolen	\$0	\$0	\$161,901	\$0	\$0	\$1,667,792	\$0	\$0	\$6,861
Recovered	\$0	\$0	\$1,278	\$0	\$0	\$15,963	\$0	\$0	\$0
% Recovered	0.0%	0.0%	0.8%	0.0%	0.0%	1.0%	0.0%	0.0%	0.0%
Clothing									
Stolen	\$0	\$64	\$20,640	\$0	\$0	\$770,916	\$0	\$0	\$600
Recovered	\$0	\$0	\$6,274	\$0	\$0	\$22,684	\$0	\$0	\$100
% Recovered	0.0%	0.0%	30.4%	0.0%	0.0%	2.9%	0.0%	0.0%	16.6%
Motor Vehicle									
Stolen	\$0	\$20,000	\$1,208,389	\$500	\$5,000	\$2,634,060	\$0	\$3,000	\$14,650
Recovered	\$0	\$1,000	\$921,751	\$500	\$0	\$1,227,972	\$0	\$1,500	\$10,350
% Recovered	0.0%	5.0%	76.3%	100.0%	0.0%	46.6%	0.0%	50.0%	70.6%
Office Equipment									
Stolen	\$0	\$0	\$54,158	\$0	\$0	\$952,757	\$0	\$0	\$280
Recovered	\$0	\$0	\$0	\$0	\$0	\$5,405	\$0	\$0	\$0
% Recovered	0.0%	0.0%	0.0%	0.0%	0.0%	0.6%	0.0%	0.0%	0.0%
TV, VCR, Camera, Etc.									
Stolen	\$0	\$300	\$152,837	\$0	\$100	\$840,709	\$0	\$0	\$15,732
Recovered	\$0	\$0	\$1,454	\$0	\$0	\$9,086	\$0	\$0	\$4,120
% Recovered	0.0%	0.0%	1.0%	0.0%	0.0%	1.1%	0.0%	0.0%	26.2%
Firearm									
Stolen	\$0	\$0	\$12,170	\$250	\$0	\$71,076	\$0	\$0	\$2,350
Recovered	\$0	\$0	\$630	\$0	\$0	\$995	\$0	\$0	\$3,140
% Recovered	0.0%	0.0%	5.2%	0.0%	0.0%	1.4%	0.0%	0.0%	133.6%
Household Goods									
Stolen	\$0	\$0	\$31,120	\$0	\$0	\$323,032	\$0	\$0	\$1,230
Recovered	\$0	\$0	\$50	\$0	\$0	\$252	\$0	\$0	\$0
% Recovered	0.0%	0.0%	0.2%	0.0%	0.0%	0.1%	0.0%	0.0%	0.0%
Consumable Goods									
Stolen	\$0	\$114	\$7,828	\$0	\$0	\$31,852	\$0	\$495	\$55
Recovered	\$0	\$0	\$1,950	\$0	\$0	\$2,939	\$0	\$0	\$35
% Recovered	0.0%	0.0%	24.9%	0.0%	0.0%	9.2%	0.0%	0.0%	63.0%
Livestock									
Stolen	\$0	\$0	\$0	\$0	\$0	\$620	\$0	\$0	\$0
Recovered	\$0	\$0	\$0	\$0	\$0	\$0	\$0	\$0	\$0
% Recovered	0.0%	0.0%	0.0%	0.0%	0.0%	0.0%	0.0%	0.0%	0.0%
Misc.									
Stolen	\$10,125	\$10,970	\$345,732	\$0	\$0	\$2,734,489	\$615	\$798	\$35,912
Recovered	\$100	\$515	\$129,934	\$0	\$0	\$121,613	\$50	\$0	\$530
% Recovered	1.0%	4.7%	37.6%	0.0%	0.0%	4.4%	8.1%	0.0%	1.5%
TOTALS									
Stolen	\$10,125	\$31,624	\$2,031,402	\$750	\$5,100	\$11,495,878	\$1,115	\$4,543	\$80,382
Recovered	\$100	\$1,515	\$1,063,321	\$500	\$0	\$1,409,779	\$50	\$1,500	\$18,574
% Recovered	1.0%	4.8%	52.3%	66.7%	0.0%	12.3%	4.5%	33.0%	23.1%

Stolen/Recovered Property Report

November 2006

Property Type	Mesquite PD	Mineral SO	NLVPD	Nye SO	Pershing SO	Reno PD	Sparks PD	Storey SO	Taxicab	TMCC PD
Currency										
Stolen	\$24,879	\$0	\$94,300	\$41,972	\$0	\$64,223	\$19,363	\$0	\$2,195	\$0
Recovered	\$0	\$0	\$2	\$32	\$0	\$76	\$111	\$0	\$0	\$0
% Recovered	0.0%	0.0%	0.0%	0.1%	0.0%	0.1%	0.6%	0.0%	0.0%	0.0%
Jewelry										
Stolen	\$33,000	\$0	\$172,850	\$1,470	\$0	\$124,515	\$52,709	\$0	\$1,000	\$0
Recovered	\$0	\$0	\$797	\$0	\$0	\$1,854	\$303	\$0	\$0	\$0
% Recovered	0.0%	0.0%	0.5%	0.0%	0.0%	1.5%	0.6%	0.0%	0.0%	0.0%
Clothing										
Stolen	\$1	\$0	\$31,482	\$1,050	\$0	\$17,684	\$9,691	\$0	\$50	\$0
Recovered	\$0	\$0	\$594	\$0	\$0	\$7,371	\$328	\$0	\$0	\$0
% Recovered	0.0%	0.0%	1.9%	0.0%	0.0%	41.7%	3.4%	0.0%	0.0%	0.0%
Motor Vehicle										
Stolen	\$33,000	\$0	\$2,943,166	\$100,000	\$0	\$739,542	\$319,432	\$0	\$0	\$0
Recovered	\$39,000	\$0	\$2,187,205	\$0	\$0	\$734,737	\$221,940	\$0	\$0	\$0
% Recovered	118.2%	0.0%	74.3%	0.0%	0.0%	99.4%	69.5%	0.0%	0.0%	0.0%
Office Equipment										
Stolen	\$0	\$0	\$4,450	\$10,700	\$0	\$86,482	\$24,287	\$0	\$0	\$0
Recovered	\$0	\$0	\$0	\$0	\$0	\$600	\$440	\$0	\$0	\$0
% Recovered	0.0%	0.0%	0.0%	0.0%	0.0%	0.7%	1.8%	0.0%	0.0%	0.0%
TV, VCR, Camera, Etc.										
Stolen	\$300	\$0	\$248,117	\$3,544	\$0	\$136,734	\$64,859	\$0	\$500	\$0
Recovered	\$0	\$0	\$5,334	\$0	\$0	\$2,089	\$1,178	\$0	\$0	\$0
% Recovered	0.0%	0.0%	2.1%	0.0%	0.0%	1.5%	1.8%	0.0%	0.0%	0.0%
Firearm										
Stolen	\$0	\$2,250	\$13,978	\$1,250	\$0	\$6,399	\$6,945	\$0	\$0	\$0
Recovered	\$0	\$2,250	\$2,500	\$0	\$0	\$0	\$170	\$0	\$0	\$0
% Recovered	0.0%	100.0%	17.9%	0.0%	0.0%	0.0%	2.4%	0.0%	0.0%	0.0%
Household Goods										
Stolen	\$0	\$0	\$65,280	\$90	\$0	\$23,141	\$70,467	\$0	\$0	\$0
Recovered	\$0	\$0	\$732	\$0	\$0	\$95	\$13	\$0	\$0	\$0
% Recovered	0.0%	0.0%	1.1%	0.0%	0.0%	0.4%	0.0%	0.0%	0.0%	0.0%
Consumable Goods										
Stolen	\$350	\$27	\$3,682	\$242	\$0	\$2,322	\$3,338	\$0	\$0	\$0
Recovered	\$0	\$0	\$528	\$242	\$0	\$253	\$161	\$0	\$0	\$0
% Recovered	0.0%	0.0%	14.3%	100.0%	0.0%	10.9%	4.8%	0.0%	0.0%	0.0%
Livestock										
Stolen	\$0	\$0	\$900	\$0	\$0	\$0	\$0	\$0	\$0	\$0
Recovered	\$0	\$0	\$0	\$0	\$0	\$0	\$0	\$0	\$0	\$0
% Recovered	0.0%	0.0%	0.0%	0.0%	0.0%	0.0%	0.0%	0.0%	0.0%	0.0%
Misc.										
Stolen	\$8,927	\$279	\$240,233	\$16,378	\$0	\$375,665	\$107,281	\$0	\$100	\$0
Recovered	\$0	\$79	\$5,536	\$1,973	\$0	\$22,220	\$35,677	\$0	\$0	\$0
% Recovered	0.0%	28.3%	2.3%	12.0%	0.0%	5.9%	33.3%	0.0%	0.0%	0.0%
TOTALS										
Stolen	\$100,457	\$2,556	\$3,818,438	\$176,696	\$0	\$1,576,707	\$678,372	\$0	\$3,845	\$0
Recovered	\$39,000	\$2,329	\$2,203,228	\$2,247	\$0	\$769,295	\$260,321	\$0	\$0	\$0
% Recovered	38.8%	91.1%	57.7%	1.3%	0.0%	48.8%	38.4%	0.0%	0.0%	0.0%

Stolen/Recovered Property Report

November

Property Type	UNLV PD	UNR PD	Washoe SO	Washoe Co Schl PD	Wendover PD	White Pine SO	Winnemucca PD	Yerington PD	Total By Property
Currency									
Stolen	\$1,557	\$6,400	\$20,075	\$156	\$867	\$40	\$560	\$4	\$1,826,820
Recovered	\$0	\$20	\$0	\$56	\$317	\$0	\$0	\$0	\$3,824
% Recovered	0.0%	0.3%	0.0%	35.9%	36.6%	0.0%	0.0%	0.0%	0.2%
Jewelry									
Stolen	\$9,990	\$0	\$40,436	\$0	\$500	\$0	\$0	\$0	\$2,287,923
Recovered	\$4,650	\$0	\$13,500	\$0	\$0	\$0	\$0	\$0	\$38,345
% Recovered	46.5%	0.0%	33.4%	0.0%	0.0%	0.0%	0.0%	0.0%	1.7%
Clothing									
Stolen	\$1,558	\$0	\$3,955	\$0	\$0	\$0	\$0	\$0	\$862,436
Recovered	\$0	\$0	\$60	\$0	\$0	\$0	\$0	\$0	\$37,960
% Recovered	0.0%	0.0%	1.5%	0.0%	0.0%	0.0%	0.0%	0.0%	4.4%
Motor Vehicle									
Stolen	\$69,516	\$5,000	\$131,635	\$0	\$25,000	\$41,500	\$1,800	\$0	\$8,593,870
Recovered	\$2,000	\$0	\$42,700	\$0	\$25,000	\$31,500	\$0	\$0	\$5,630,955
% Recovered	2.9%	0.0%	32.4%	0.0%	100.0%	75.9%	0.0%	0.0%	65.5%
Office Equipment									
Stolen	\$0	\$3,999	\$14,941	\$140	\$400	\$1,225	\$0	\$0	\$1,167,941
Recovered	\$0	\$0	\$0	\$0	\$0	\$0	\$0	\$0	\$6,445
% Recovered	0.0%	0.0%	0.0%	0.0%	0.0%	0.0%	0.0%	0.0%	0.6%
TV, VCR, Camera, Etc.									
Stolen	\$15,806	\$830	\$24,506	\$1,150	\$1,220	\$310	\$1,000	\$0	\$1,549,940
Recovered	\$0	\$0	\$80	\$900	\$500	\$250	\$0	\$0	\$34,014
% Recovered	0.0%	0.0%	0.3%	78.3%	41.0%	80.6%	0.0%	0.0%	2.2%
Firearm									
Stolen	\$0	\$0	\$4,300	\$0	\$0	\$400	\$400	\$1,000	\$130,853
Recovered	\$0	\$0	\$0	\$0	\$0	\$0	\$0	\$0	\$10,670
% Recovered	0.0%	0.0%	0.0%	0.0%	0.0%	0.0%	0.0%	0.0%	8.2%
Household Goods									
Stolen	\$0	\$0	\$55	\$0	\$0	\$0	\$400	\$0	\$524,934
Recovered	\$0	\$0	\$0	\$0	\$0	\$0	\$0	\$0	\$1,307
% Recovered	0.0%	0.0%	0.0%	0.0%	0.0%	0.0%	0.0%	0.0%	0.2%
Consumable Goods									
Stolen	\$0	\$0	\$904	\$0	\$22,426	\$68	\$0	\$0	\$75,258
Recovered	\$0	\$0	\$0	\$0	\$1	\$30	\$0	\$0	\$6,250
% Recovered	0.0%	0.0%	0.0%	0.0%	0.0%	43.8%	0.0%	0.0%	8.3%
Livestock									
Stolen	\$0	\$0	\$0	\$0	\$0	\$0	\$0	\$0	\$1,520
Recovered	\$0	\$0	\$0	\$0	\$0	\$0	\$0	\$0	\$0
% Recovered	0.0%	0.0%	0.0%	0.0%	0.0%	0.0%	0.0%	0.0%	0.0%
Misc.									
Stolen	\$3,649	\$24,620	\$88,934	\$587	\$80	\$484	\$7	\$2,425	\$4,671,684
Recovered	\$0	\$50	\$1,055	\$0	\$0	\$14	\$0	\$0	\$825,646
% Recovered	0.0%	0.2%	1.2%	0.0%	0.0%	2.9%	0.0%	0.0%	17.7%
TOTALS									
Stolen	\$102,076	\$40,849	\$329,741	\$2,033	\$50,493	\$44,027	\$4,167	\$3,429	\$21,693,179
Recovered	\$6,650	\$70	\$57,395	\$956	\$25,818	\$31,794	\$0	\$0	\$6,595,415
% Recovered	6.5%	0.2%	17.4%	47.0%	51.1%	72.2%	0.0%	0.0%	30.4%

Nevada--Assaults on Officers by Agency--UCR

November 2006

Agency	November 2006 Offenses	November 2006 Cleared	2006 YTD Offenses	2006 YTD Cleared	November 2005 Offenses	November 2005 Cleared	2005 YTD Offenses	2005 YTD Cleared
Boulder	0	0	0	0	0	0	5	5
Carlin PD	0	0	1	0	0	0	2	2
Carson SO	0	0	10	9	0	0	6	6
Churchill SO	0	0	12	11	0	0	3	3
ClrkSchIDst PD	0	0	10	9	0	0	0	0
Douglas SO	0	0	7	7	0	0	7	7
Elko PD	1	0	8	4	0	0	4	3
Elko SO	0	0	0	0	0	0	0	0
Esmeralda SO	0	0	0	0	0	0	0	0
Eureka SO	0	0	2	2	0	0	0	0
Fallon PD	0	0	1	1	0	0	0	0
Henderson PD	1	1	10	8	6	6	34	34
Highway Patrol	2	2	36	34	3	3	23	18
Humboldt SO	0	0	0	0	0	0	0	0
Lander SO	0	0	0	0	0	0	0	0
Lincoln SO	0	0	0	0	0	0	0	0
Lovelock PD	0	0	0	0	0	0	0	0
LV Fire Dept	0	0	0	0	0	0	0	0
LV Metro	26	25	366	350	21	17	261	252
Lyon SO	1	0	12	10	0	0	12	12
Mesquite PD	0	0	0	0	0	0	0	0
Mineral SO	0	0	0	0	0	0	0	0
NV Div Investigations	0	0	0	0	0	0	0	0
NLVPD	3	3	31	29	2	2	41	40
Nye SO	1	1	11	6	0	0	2	2
Pershing SO	0	0	0	0	0	0	0	0
Reno PD	0	0	17	17	0	0	14	14
Sparks PD	0	0	8	7	0	0	1	1
Storey SO	0	0	0	0	0	0	0	0
Taxicab Authority	0	0	0	0	0	0	0	0
TMCC PD	0	0	0	0	0	0	0	0
UNLV PD	1	1	1	1	0	0	1	1
UNR PD	0	0	0	0	0	0	1	1
Washoe SO	0	0	0	0	0	0	0	0
Washoe Co Schl PD	0	0	0	0	0	0	0	0
Wendover PD	1	0	5	4	0	0	5	5
White Pine SO	0	0	2	1	0	0	5	5
Winnemucca PD	0	0	2	2	0	0	2	2
Yerington PD	0	0	0	0	0	0	0	0
TOTALS	37	33	552	512	32	28	429	413

Nevada -- Assaults by Agency/Weapon/Assignment -- UCR

November 2006

Table 16

Agency	Total Assaults	Number Cleared	Firearm	Knife / Cutting Device	Other Danger. Weapon	Hands, Fists, Feet, Etc.	2-Officer Vehicle	1-Officer Vehicle- Alone	1-Officer Vehicle- Assisted	Det./Spec. Assign. - Alone	Det./Spec. Assign. - Assisted	Other- Alone	Other- Assisted
Boulder City PD	0	0	0	0	0	0	0	0	0	0	0	0	0
Carlin PD	0	0	0	0	0	0	0	0	0	0	0	0	0
Carson City SO	0	0	0	0	0	0	0	0	0	0	0	0	0
Churchill Co SO	0	0	0	0	0	0	0	0	0	0	0	0	0
Clark School Dist PD	0	0	0	0	0	0	0	0	0	0	0	0	0
Douglas Co SO	0	0	0	0	0	0	0	0	0	0	0	0	0
Elko PD	1	0	0	0	0	1	0	0	1	0	0	0	0
Elko Co SO	0	0	0	0	0	0	0	0	0	0	0	0	0
Esmeralda Co SO	0	0	0	0	0	0	0	0	0	0	0	0	0
Eureka Co SO	0	0	0	0	0	0	0	0	0	0	0	0	0
Fallon PD	0	0	0	0	0	0	0	0	0	0	0	0	0
Henderson PD	1	1	0	0	1	0	1	0	0	0	0	0	0
NV Highway Patrol	2	2	0	0	2	0	0	0	0	0	0	0	0
Humboldt Co SO	0	0	0	0	0	0	0	0	0	0	0	0	0
Lander Co SO	0	0	0	0	0	0	0	0	0	0	0	0	0
Lincoln Co SO	0	0	0	0	0	0	0	0	0	0	0	0	0
Lovelock PD	0	0	0	0	0	0	0	0	0	0	0	0	0
Las Vegas Fire Dept	0	0	0	0	0	0	0	0	0	0	0	0	0
Las Vegas Metro PD	26	25	0	1	2	23	17	4	5	0	0	0	0
Lyon Co SO	1	0	0	0	0	1	0	1	0	0	0	0	0
Mesquite PD	0	0	0	0	0	0	0	0	0	0	0	0	0
Mineral Co SO	0	0	0	0	0	0	0	0	0	0	0	0	0
NV Div of Investigations	0	0	0	0	0	0	0	0	0	0	0	0	0
North Las Vegas PD	3	3	0	0	0	3	1	0	1	0	0	1	0
Nye Co SO	1	1	0	1	0	0	0	0	1	0	0	0	0
Pershing Co SO	0	0	0	0	0	0	0	0	0	0	0	0	0
Reno PD	0	0	0	0	0	0	0	0	0	0	0	0	0
Sparks PD	0	0	0	0	0	0	0	0	0	0	0	0	0
Storey Co SO	0	0	0	0	0	0	0	0	0	0	0	0	0
Taxi Authority	0	0	0	0	0	0	0	0	0	0	0	0	0
TMCC PD	0	0	0	0	0	0	0	0	0	0	0	0	0
UNLV PD	1	1	0	0	0	1	0	0	0	0	1	0	0
UNR PD	0	0	0	0	0	0	0	0	0	0	0	0	0
Washoe Co SO	0	0	0	0	0	0	0	0	0	0	0	0	0
Washoe Co School PD	0	0	0	0	0	0	0	0	0	0	0	0	0
West Wendover PD	1	0	0	0	1	0	0	1	0	0	0	0	0
White Pine Co SO	0	0	0	0	0	0	0	0	0	0	0	0	0
Winnemucca PD	0	0	0	0	0	0	0	0	0	0	0	0	0
Yerington PD	0	0	0	0	0	0	0	0	0	0	0	0	0
TOTALS	37	33	0	2	6	29	19	6	8	0	1	1	0

28

Nevada -- Officer Assaults by Activity/Weapon/Assignment -- UCR

November 2006

Table 17

ACTIVITY TYPE	Total Assaults	Number Cleared	Firearm	Knife / Cutting Device	Other Danger. Weapon	Hands, Fists, Feet, Etc.	2-Officer Vehicle	1-Officer Vehicle-Alone	1-Officer Vehicle-Assisted	Det./Spec. Assign.-Alone	Det./Spec. Assign.-Assisted	Other-Alone	Other-Assisted
DOMESTIC / OTHER DISTURBANCE	24	21	0	1	0	23	15	2	6	0	1	0	0
BURGLARY IN PROGRESS	0	0	0	0	0	0	0	0	0	0	0	0	0
ROBBERY IN PROGRESS	0	0	0	0	0	0	0	0	0	0	0	0	0
ATTEMPTING OTHER ARREST	2	2	0	1	0	1	1	0	1	0	0	0	0
CIVIL DISORDER	0	0	0	0	0	0	0	0	0	0	0	0	0
HANDLING PRISONER	1	0	0	0	1	0	0	1	0	0	0	0	0
INVEST. SUSP. PERSONS / CIRCUM.	3	3	0	0	1	2	2	0	0	0	0	1	0
AMBUSH-NO WARNING	0	0	0	0	0	0	0	0	0	0	0	0	0
MENTALLY DERANGED	0	0	0	0	0	0	0	0	0	0	0	0	0
TRAFFIC PURSUITS / STOPS	7	7	0	0	4	3	1	3	1	0	0	0	0
ALL OTHER	0	0	0	0	0	0	0	0	0	0	0	0	0
TOTALS	37	33	0	2	6	29	19	6	8	0	1	1	0

29

Nevada--Time of Assaults on Officers--UCR

November 2006

Agency	2:00 AM	4:00 AM	6:00 AM	8:00 AM	10:00 AM	12:00 AM	12:01-2:00 PM	2:00-4:00 PM	4:00-6:00 PM	6:00-8:00 PM	10:00 PM	10:00-12:00 PM
Boulder City PD	0	0	0	0	0	0	0	0	0	0	0	0
Carlin PD	0	0	0	0	0	0	0	0	0	0	0	0
Carson City SO	0	0	0	0	0	0	0	0	0	0	0	0
Churchill Co SO	0	0	0	0	0	0	0	0	0	0	0	0
Clark Co Schl Dist PD	0	0	0	0	0	0	0	0	0	0	0	0
Douglas Co SO	0	0	0	0	0	0	0	0	0	0	0	0
Elko Co SO	0	0	0	0	0	0	0	0	0	0	0	0
Elko PD	0	1	0	0	0	0	0	0	0	0	0	0
Esmeralda Co SO	0	0	0	0	0	0	0	0	0	0	0	0
Eureka Co SO	0	0	0	0	0	0	0	0	0	0	0	0
Fallon PD	0	0	0	0	0	0	0	0	0	0	0	0
Henderson PD	0	0	0	0	0	0	0	1	0	0	0	0
Highway Patrol	0	0	0	0	0	0	1	0	1	0	0	0
Humboldt Co SO	0	0	0	0	0	0	0	0	0	0	0	0
Lander Co SO	0	0	0	0	0	0	0	0	0	0	0	0
Las Vegas Metro PD	1	0	1	1	4	0	0	1	3	3	4	8
Lincoln Co SO	0	0	0	0	0	0	0	0	0	0	0	0
Lovelock PD	0	0	0	0	0	0	0	0	0	0	0	0
Lyon Co SO	0	0	0	0	0	0	0	0	0	1	0	0
Mesquite PD	0	0	0	0	0	0	0	0	0	0	0	0
Mineral Co SO	0	0	0	0	0	0	0	0	0	0	0	0
NV Div Investigations	0	0	0	0	0	0	0	0	0	0	0	0
North LV PD	1	0	0	0	0	0	0	1	0	1	0	0
Nye Co SO	0	0	0	0	0	0	0	0	0	0	0	1
Pershing Co SO	0	0	0	0	0	0	0	0	0	0	0	0
Reno PD	0	0	0	0	0	0	0	0	0	0	0	0
Sparks PD	0	0	0	0	0	0	0	0	0	0	0	0
Storey Co SO	0	0	0	0	0	0	0	0	0	0	0	0
Taxicab Authority	0	0	0	0	0	0	0	0	0	0	0	0
TMCC PD	0	0	0	0	0	0	0	0	0	0	0	0
UNLV PD	0	0	0	0	0	0	0	0	0	0	1	0
UNR PD	0	0	0	0	0	0	0	0	0	0	0	0
Washoe Co SO	0	0	0	0	0	0	0	0	0	0	0	0
Washoe Co Schl PD	0	0	0	0	0	0	0	0	0	0	0	0
West Wendover PD	0	0	0	0	0	0	0	0	0	1	0	0
White Pine Co SO	0	0	0	0	0	0	0	0	0	0	0	0
Winnemucca PD	0	0	0	0	0	0	0	0	0	0	0	0
Yerington PD	0	0	0	0	0	0	0	0	0	0	0	0
Totals	2	1	1	1	4	0	1	3	4	6	5	9

Nevada -- Division Of Investigations

Arrests for Narcotics Violations

NOVEMBER 2006

		10-	13-																			Total	W	B	A	I																																															
		<10	12	14	15	16	17	18	19	20	21	22	23	24	25-	29	30-	34	35-	39	40-	44	45-	49	50-	54	55-	59	60-	>64	Total	W	B	A	I																																						
SALES/MANUFACTURING VIOLATIONS																																																																									
Opium or cocaine and their derivatives (morphine, heroin, codeine)	M																																			0																																					
	F																																			0																																					
Marijuana	M																																			1																																					
	F																																			0																																					
Synthetic narcotics- Manufactured narcotics that can cause true drug addiction (demerol, meth)	M																																			0																																					
	F																																			0																																					
Other dangerous, non-narcotic, drugs (barbituates, benzderine)	M																																			1	1								5	2	3	1																									
	F																																												1	1																											
Sub-Total	M	0	0	0	0	0	0	0	0	0	1	1	0	5	2	4	1	0	0	0	0	0	0	0	0	0	0	0	0	0	14	0	0	0	0	0																																					
	F	0	0	0	0	0	0	0	0	0	0	0	0	0	1	1	0	0	0	0	0	0	0	0	0	0	0	0	0	2	16	0	0	0	0	0																																					
POSSESSION VIOLATIONS																																																																									
Opium or cocaine and their derivatives (morphine, heroin, codeine)	M																																			1																																					
	F																																			0																																					
Marijuana	M																																			1								1	2																												
	F																																													1																											
Synthetic narcotics- Manufactured narcotics that can cause true drug addiction (demerol, meth)	M																																			0																																					
	F																																			0																																					
Other dangerous, non-narcotic, drugs (barbituates, benzderine)	M																																														1																										
	F																																							1						1	1	1				1																					
Sub-Total	M	0	0	0	0	0	0	0	1	0	0	0	1	2	1	1	0	0	0	0	0	0	0	0	0	0	0	0	6	0	0	0	0	0	0																																						
	F	0	0	0	0	0	0	1	0	0	0	0	0	2	1	1	0	1	0	0	0	0	0	0	0	0	0	6	12	0	0	0	0	0																																							
Total		0	0	0	0	0	0	1	1	0	1	1	1	9	5	7	1	1	0	0	0	0	0	0	0	0	28	28	0	0	0	0	0																																								

AGE, RACE AND SEX OF PERSONS CHARGED

18 Years of Age and over

November 2006

CLASSIFICATION OF OFFENSES	SEX															Total Over 18	RACE							
		18	19	20	21	22	23	24	25-29	30-34	35-39	40-44	45-49	50-54	55-59		60-64	over 65	White	Black	American Indian or Alaskan Native	Asian or Pacific Islander		
Murder and Nonnegligent Manlaughter	01a	Male	1		1				1	3		1	1				2	10						
		Female							1			2					3	9	4					
Manlaughter by Negligence	01b	Male								1					1		2							
		Female															0	2						
Forcible Rape	02	Male		1		1		1		2	1	1	1	1			10							
		Female															0	7	2		1			
Robbery	03	Male	14	5	8	5	9	2	3	20	12	9	7	7	1	1		103						
		Female	2	1	1	1	1	2		6	3	2		1	1		21	64	59		1			
Aggravated Assault (Return A-4a-d)	04	Male	4	8	8	4	7	3	6	39	18	23	20	8	7	4	2	2	163					
		Female		2				1	2	10	4	7	4		3	4		38	144	47	6	4		
Burglary--Breaking or Entering	05	Male	11	8	5	3	12	4	8	25	13	11	18	11	2			131	1					
		Female		6		2	2	1	5	5	5	3	5	4	2		1	42	142	29	1			
Larceny--Theft (except Motor Vehicle Theft)	06	Male	27	23	16	13	19	14	17	59	52	57	60	55	24	4	4	3	447					
		Female	10	11	9	8	8	9	13	38	32	20	34	23	15	11	2	2	245	529	136	5	22	
Motor Vehicle Theft	07	Male	8	8	5	7	8	6	7	21	20	10	7	8	3	2		2	122					
		Female	1	5	2	3	2		2	10	4	2	4	1			1	37	119	33	2	5		
Other Assaults (Return A-4e)	08	Male	30	26	33	33	42	38	32	182	134	115	129	95	46	25	8	8	976					
		Female	7	10	11	18	13	11	22	54	62	33	40	24	7	7	2	4	325	925	328	9	39	
Arson	09	Male	1							1		2						4						
		Female	1															1	3	2				
Forgery & Counterfeiting	10	Male	2		1	1		3	2	5	20	14	11	8	3	2	1	73						
		Female	1			3	2		1	12	4	6	8	3	1			41	77	27		10		
Fraud	11	Male	1	5	3	7	7	6	8	16	21	17	22	13	6	5	2	2	141					
		Female	1	2	1	2	1	1		15	12	6	7	5	4	2	1		60	156	32	1	12	
Embezzlement	12	Male	2	3	1	2			1	2	3	2		2				18						
		Female	1	1	1		3	2		6	3	4	6			1		28	41	5				
Stolen Property; Buying, Receiving, Possessing	13	Male	12	8	10	4			5	21	12	7	11	6	1	1	1	1	100					
		Female	2	2	1	2	1	1	1	7	6	1	5	1	2			31	100	28		3		
Vandalism	14	Male	11	6	3	4	5	3	4	15	6	8	11	10	2	1	1	1	91					
		Female			1					1		2	1	1				6	87	8	1	1		
Weapons; Carrying, Possessing, etc.	15	Male	14	10	11	6	6	10	9	25	18	16	13	7	4	1	1	151						
		Female	1			1	1		1	5	3	2	1			1		16	114	47		6		
Prostitution and Commercialized Vice	16	Male		1	1	1	3	1		9	5	8	6	4	3	3	2	1	48					
		Female	20	46	26	38	40	20	16	61	42	23	25	13	8	2		1	381	204	194	2	29	
Sex Offenses (except Forcible Rape and Prostitution)	17	Male	2	2	1	2			2	2	16	14	7	14	9	8	6	1	2	88				
		Female								1			3	1	1			6	70	21		3		
Drug Abuse Violations Grand Total	18	Male	42	65	45	39	48	41	38	177	105	90	83	66	30	19	3	3	894					
		Female	12	4	8	3	9	7	10	25	33	32	22	19	7	2	0	0	193	749	314	7	17	
(1) Sale/Manufacturing Subtotal	180	Male	4	10	4	7	9	7	6	42	31	15	16	13	4	0	0	1	169					
		Female	1	1	1	0	0	3	1	4	8	2	4	9	0	0	0	0	34	131	67	1	3	
Opium or Cocaine and Their Derivatives (Morphine, Heroin, Codeine)	a	Male	1	1	3		3	3	4	19	13	5	2	6				1	61					
		Female	1					1	1	1	4	1	2	6					17	37	40		1	
Marijuana	b	Male	3	4	1	5	2	1	1	10	6	2	5	3	3				46					
		Female								1			1	1					3	26	22		1	
Synthetic Narcotics--Manufactured Narcotics Which Cause True Drug Addiction (Demerol, Methadone)	c	Male		1		1	1	1		5	5	5	3	3	1				26					
		Female						1		2									3	26	2		1	
Other Dangerous Non-Narcotic Drugs (Barbiturates, Benzedrine)	d	Male		4		1	3	2	1	8	7	3	6	1					36					
		Female		1	1			1			4	1	1	2					11	42	3	1		

CLASSIFICATION OF OFFENSES		SEX																		RACE			
			18	19	20	21	22	23	24	25-29	30-34	35-39	40-44	45-49	50-54	55-59	60-64	over 65	Total Over 18	White	Black	American Indian or Alaskan Native	Asian or Pacific Islander
(2) Possession - Subtotal	185	Male	38	55	41	32	39	34	32	135	74	75	67	53	26	19	3	2	725	618	247	6	14
		Female	11	3	7	3	9	4	9	21	25	30	18	10	7	2	0	0	159				
Opium or Cocaine and Their Derivatives (Morphine, Heroin, Codeine)	e	Male	2	3	6	2	3	1	2	16	6	14	21	13	5	6	1	1	102				
		Female	1		1				1	4	4	10	3	3	3	1			31	77	51	5	
Marijuana	f	Male	30	43	30	21	27	21	22	86	36	33	20	18	11	9	2	1	410				
		Female	8	1	6	2	8	4	6	10	10	7	6	3	1				72	308	161	1	13
Synthetic Narcotics-Manufactured Narcotics Which Cause True Drug Addiction (Demerol, Methad)	g	Male	4	9	5	7	8	11	8	26	29	27	25	22	8	4			193				
		Female	2	2		1	1		2	6	8	13	7	4	2	1			49	208	33		1
Other Dangerous Non-Narcotic Drugs (Barbiturates, Benzedrine)	h	Male	2			2	1	1		7	3	1	1		2				20				
		Female								1	3		2		1				7	25	2		
Gambling Total	19	Male	2	4	0	0	0	0	0	0	0	0	0	0	1	0	0	0	7				
		Female	1	4	2	1	0	0	0	0	0	0	0	0	0	0	0	0	8	5	7	0	3
Bookmaking (Horses and Sports Book)	a	Male																	0				
		Female																	0				
Numbers and Lottery	b	Male																	0				
		Female																	0				
All Other Gambling	c	Male	2	4											1				7				
		Female	1	4	2	1													8	5	7		3
Offenses Against Family and Children	20	Male	6	7	4	2	3	3	2	12	10	12	16	3	8	3	2		93				
		Female	2	1			1	2		11	6	10	7	1	2				43	119	14		3
Driving Under the Influence	21	Male	14	12	21	27	19	32	32	121	97	81	78	58	48	19	14	11	684				
		Female	4	1	3	5	9	10	6	29	25	24	28	17	18	9	3	1	192	765	61	21	29
Liquor Laws	22	Male	39	39	34	10	12	7	11	34	25	39	55	44	48	21	14	6	438				
		Female	8	13	8	2	2		2	8	6	6	12		6	3			76	398	88	23	5
Drunkenness	23	Male					1	1					1				1		4				
		Female				1		1						1					3	6		1	
Disorderly Conduct	24	Male	6		4	1	5	3	4	17	17	18	17	26	8	2	2		130				
		Female	1	1	1	1	1	1	2	2	1	3	2	3	2			1	22	125	23	2	2
Vagrancy	25	Male	3	3	2		1	2	4	14	10	15	12	27	19	12	4	2	130				
		Female						3		3	3	2	2	1	3	1		2	20	95	48	5	2
All Other Offenses (except Traffic) Total	26	Male	93	113	141	132	135	115	104	557	464	474	515	430	238	123	45	29	3708				
		Female	47	51	60	73	59	64	70	257	153	142	174	88	32	16	6	10	1302	3407	1433	64	106
Suspicion	27	Male																	0				
		Female																	0				
GRAND TOTAL			465	518	494	467	497	433	453	1958	1488	1366	1498	1108	625	314	123	99	11906	8463	2990	150	303

AGE, SEX, AND RACE OF PERSONS CHARGED

November 2006

18 Years of age and under

(Count all Offences even if the Arrest is based on only one charge)

CLASSIFICATION OF OFFENSES	SEX	AGE							Total Under 18	RACE				
		Under 10	10-12	13-14	15	16	17	18		White	Black	American Indian or Alaskan Native	Asian or Pacific Islander	
Murder and Nonnegligent Manslaughter	01a	Male				1			1					
		Female							0	1				
Manslaughter by Negligence	01b	Male							0					
		Female							0					
Forcible Rape	02	Male			1			1	2					
		Female							0	2				
Robbery	03	Male			3	3	5	9	20					
		Female					1	1	11	9			1	
Aggravated Assault (Return A-4a-d)	04	Male	1		6	3	5	5	20					
		Female		1	1	4	2		8	18	10			
Burglary--Breaking or Entering	05	Male	2	7	27	17	15	11	79					
		Female			4				4	49	30	1	3	
Larceny--Theft (except Motor Vehicle Theft)	06	Male	1	13	39	28	32	31	144					
		Female		5	20	9	15	11	60	150	46	3	5	
Motor Vehicle Theft	07	Male			1	3		2	6					
		Female			1	1		1	3	5	3	1		
Other Assaults (Return A-4e)	08	Male	1	11	20	15	17	21	85					
		Female	1	5	17	12	9	19	63	128	20			
Arson	09	Male		14	21	9	3	2	49					
		Female		2	5	4	2	2	15	29	32		3	
Forgery & Counterfeiting	10	Male			1		1		2					1
		Female							0	1				
Fraud	11	Male			1				1					
		Female			1			1	2	1	1		1	
Embezzlement	12	Male						1	1					
		Female					1	1	2	3				
Stolen Property; Buying, Receiving, Possessing	13	Male			5	4	6	5	20					
		Female						1	1	14	7			
Vandalism	14	Male	2	17	31	25	24	12	111					
		Female		7	6	1		3	17	113	11	1	3	
Weapons; Carrying, Possessing, etc.	15	Male	1	2	11	7	8	8	37					
		Female		1	2		1	1	5	37	3		2	
Prostitution and Commercialized Vice	16	Male							0					
		Female					1		1	1				
Sex Offenses (except Forcible Rape and Prostitution)	17	Male			3	2	3		8					
		Female							0	8				
Drug Abuse Violations		Male	0	3	21	26	34	36	120					
Grand Total	18	Female	0	2	7	4	7	4	24	114	19	4	7	
(1) Sale/Manufacturing Subtotal	180	Male	0	0	4	2	4	10	20					
		Female	0	0	2	3	1	0	6	25	0	1	0	
Opium or Cocaine and Their Derivatives (Morphine, Heroin, Codeine)	a	Male							0					
		Female							0					
Marijuana	b	Male			4	2	2	7	15					
		Female				3			3	17		1		
Synthetic Narcotics-Manufactured Narc Cause True Drug Addiction (Der	c	Male					1	1	2					
		Female							0	2				
Other Dangerous Non-Narcotic Drugs (Barbiturates, Benzadrine	d	Male					1	2	3					
		Female			2		1		3	6				
(2) Possession - Subtotal	185	Male	0	3	17	24	30	26	100					
		Female	0	2	5	1	6	4	18	89	19	3	7	
Opium or Cocaine and Their Derivatives (Morphine, Heroin, Codeine)	e	Male				1	2	2	5					
		Female					1		1	4	2			
Marijuana	f	Male		3	16	22	25	22	88					
		Female		2	5	1	2	2	12	74	16	3	7	
Synthetic Narcotics-Manufactured Narc Cause True Drug Addiction (Der	g	Male			1		2	2	5					
		Female					1	2	3	7	1			
Other Dangerous Non-Narcotic Drugs (Barbiturates, Benzadrine	h	Male				1	1		2					
		Female					2		2	4				

CLASSIFICATION OF OFFENSES									RACE			
									White	Black	American Indian or Alaskan Native	Asian or Pacific Islander
SEX	Under 10	10-12	13-14	15	16	17	Total Under 18					
Gambling Total 19	Male	0	0	0	0	0	1	1				
	Female	0	0	0	0	0	0	0	1	0	0	0
Bookmaking (Horses and Sports Book) a	Male							0				
	Female							0				
Numbers and Lottery b	Male							0				
	Female							0				
All Other Gambling c	Male						1	1				
	Female							0	1			
Offenses Against Family and Children 20	Male			1	1		3	5				
	Female			2	1	1	1	5	10			
Driving Under the Influence 21	Male						1	6				
	Female							0	6			1
Liquor Laws 22	Male			14	26	31	38	109				
	Female	1	1	2	8	8	8	28	124	5	4	4
Drunkenness 23	Male							0				
	Female			1	1	1	1	4	4			
Disorderly Conduct 24	Male		7	17	16	14	5	59				
	Female		3	13	6	4	3	29	44	41		3
Vagrancy 25	Male							0				
	Female							0				
All Other Offenses (except Traffic) Total 26	Male	3	19	59	41	50	51	223				
	Female		1	27	12	30	14	84	265	38		4
Suspicion 27	Male			1	1		1	3				
	Female							0	3			
Curfew and Loitering Law Violati 28	Male	1	3	17	27	29	43	120				
	Female		1	20	20	17	21	79	165	30	1	3
Runaway 29	Male		2	7	12	26	10	57				
	Female		5	21	11	18	17	72	112	6	3	7
GRAND TOTAL		14	132	457	361	422	411	1797	1419	311	18	48



Nevada UCR Footnotes / Exceptions

November 2006

Table 1

--Nevada figures are annualized projections.

--"Assault" does not include simple assaults to allow direct comparison between the Nevada rate and the National rate for this Index offense. See Table 8 for a count of all assaults.

Table 2

--The LV Fire Department reports "Arson" offenses for the City of Las Vegas. The population figure for this agency represents jurisdiction and is not added to the county total. Similarly, the School District Police Departments in Clark and Washoe Counties are not added to county population estimates as they represent persons served (student enrollment plus staff.)

--Assault data in this table includes ALL assaults (aggravated and simple) reported for the current month.

--County crime rates are calculated following subtraction of populations of jurisdictions failing to report.

Table 3

-- In the "Nevada vs National Index Crime and Clearance Rates" sections, the "Assaults" numbers do not include simple assaults following FBI guidelines. Therefore, they may be compared directly to National rates.

-- National crime rate figures are the latest available for comparative use (2005). Nevada figures are annualized projections.

Table 13

--At various times, property values recovered will exceed values stolen for the current reporting period.

General Notes:

n The following agencies did not submit reports for this month:

Pershing County Sheriff
Story County Sheriff

-- Any late reports not submitted in time for this publication will be incorporated in to the year-to-date totals in subsequent reports.