



UNIFORM CRIME REPORTING PROGRAM
UCR STATISTICAL DATA VERIFICATION FORM

As an agency administrator or designee for the _____, I have
(Name of Agency)
reviewed the UCR monthly statistics for **October 2006** which includes all UCR data submitted
year to date. Based upon my or my designee's review and validation of same, I find that:

All data contained in the report for my agency is accurate and complete and may be
released and made part of UCR publications for future distribution to the public and other
interested UCR data subscribers.

Data contained in the report is inaccurate or incomplete and may not be published or
released at this time. (If this choice is selected, please provide the reason in the space
provided below.)

Reason: _____

The corrected data will be supplied to the UCR Program by: _____.
(Date)

This document must be signed and mailed to the Uniform Crime Reporting Program, 808 W.
Nye Lane, Carson City, Nevada 89703 or faxed to (775) 684-6266 by **March 19, 2007**.

Signature of Agency Administrator (or designee)

Name/Title of Agency Administrator (print or type)

Agency's Name/Location

Date

Disclaimer: The following information is preliminary and cannot be certified until it is published in the annual report, Crime and Justice in Nevada, which will be available after July 1, 2007.



Monthly Report



**October
2006**



**Phil Galeoto, Director
Department of Public Safety**

**Capt Philip K. O'Neill, Division Chief
Records and Identification Bureau**

**Josh Porter, Statistician II
Pam Sebring, Administrative Assistant IV
Sherri Sharp, Administrative Assistant II**

**Prepared by:
Records and Identification Bureau
Uniform Crime Reporting
808 W. Nye Lane
Carson City, Nevada 89703
(775) 684-6262**



Nevada UCR Definitions / Explanations

Uniform Crime Reporting Program

The UCR program is a nationwide, cooperative, statistical effort by over 17,000 city, county and state law enforcement agencies that voluntarily report data on crimes brought to their attention. Law enforcement agencies active in the national program represent 95% of the total population of the United States. While the program's primary objective is to generate a reliable set of crime statistics for use in law enforcement administration, operation and management, its data has over the years become one of the country's leading social indicators.

In Nevada, 39 agencies are currently reporting UCR data to the statewide program representing nearly 99% of its population. Rather than submitting directly to the FBI, local agencies must submit crime data to the state UCR Repository, which compiles, analyzes and submits copies of the reports to the FBI. The Nevada UCR Program prides itself on its responsiveness to local contributing agencies that previously received limited feedback for their efforts. The Nevada program is also responsible for producing and distributing periodic reports of the information contained in its database. As its database has grown, the program's utility has become even more apparent.

Eight offenses serve as an index for gauging fluctuations in overall volumes and rates of crime. Known collectively as the " Crime Index, " these offenses include *the violent crimes of murder, rape, robbery and assault and the property crimes of burglary, larceny, motor vehicle theft and arson*. These offenses were selected as a grouped measuring device because they represent the most common crime problems. They are all serious crimes; either by their very nature or due to the volume and frequency with which they occur.

Index Crimes Definitions

Murder and Non-negligent Manslaughter

Murder and non negligent manslaughter, as defined in the Uniform Crime Reporting Program, is the willful (non-negligent) killing of a human being by another.

The classification of this offense, as for all other Crime Index offenses, is based solely on police investigation as opposed to the determination of a court, medical examiner, coroner, jury or other judicial entity. Not included in the count for this offense classification are deaths caused by negligence, suicide or accident, justifiable homicides and attempts to murder or assaults to murder. These are scored as aggravated assaults.

Nevada UCR Definitions / Explanations

Forcible Rape

Forcible rape, as defined in the program, is the carnal knowledge of a female forcibly and against her will. Assaults or attempts to commit rape by force or threat of force are also included; however, statutory rape (without force) and other sex offenses are excluded.

Robbery

Robbery is the taking or attempting to take anything of value from the care, custody or control of a person or persons by force or threat of force or violence and/or by putting the victim in fear.

Aggravated Assault

Aggravated assault is an unlawful attack by one person upon another for the purpose of inflicting severe or aggravated bodily injury. This type of assault is usually accompanied by the use of a weapon or by means likely to produce death or great bodily harm. Attempts are included since it is not necessary that an injury result when a gun, knife or other weapon is used which could and probably would result in serious personal injury if the crime were successfully completed

Burglary

The Uniform Crime Reporting Program defines burglary as the unlawful entry of a structure to commit a felony or theft. The use of force to gain entry is not required to classify an offense as burglary. Burglary in this program is categorized into three sub classifications: forcible entry, unlawful entry where no force is used and attempted forcible entry.

Larceny-Theft

Larceny-theft is the unlawful taking, carrying, leading, or riding away of property from the possession or constructive possession of another. It includes crimes such as shoplifting, pocket picking, purse-snatching, thefts from motor vehicles, thefts of motor vehicle parts and accessories, and bicycle thefts, etc., in which no use of force, violence, or fraud occurs. In the UCR Program, this crime category does not include embezzlement, "con" games, forgery, and worthless checks. Motor vehicle theft is also excluded from this category inasmuch as it is a separate Crime Index offense.

Motor Vehicle Theft

Defined as the theft or attempted theft of a motor vehicle, this offense category includes the stealing of automobiles, trucks, buses, motorcycles, motor scooters, snowmobiles, etc. The definition excludes the taking of a motor vehicle for temporary use by those persons having lawful access.

Nevada UCR

Definitions / Explanations

Arson

Arson is defined by the Uniform Crime Reporting Program as any willful or malicious burning or attempt to burn, with or without intent to defraud, a dwelling house, public building, a motor vehicle or aircraft, personal property of another, etc. Only fires determined through investigation to have been willfully or maliciously set are classified as arsons. Fires of suspicious or unknown origins are excluded.

Population Estimates

State, county and incorporated city population estimates are prepared and reviewed prior to the end of each calendar year for certification by the governor by March 1. The Nevada Department of Taxation and Nevada State Demographer, Bureau of Business and Economic Research, College of Business Administration, University of Nevada, Reno, prepares these estimates.

Crime Rates

Crime rates involve the number of Index Crimes per unit of population, usually per 100,000 persons. Because Nevada has such a low population, a rate per 1,000 persons is used to reflect a more realistic volume. No attempt is made to incorporate transient populations or other factors that contribute to the ratio and types of crime in given areas. Any effort to make comparisons of crime rates between areas should be tempered by these population and environmental variables.

Crime rates are one of the most meaningful statistical elements. Computation of crime rates per 1,000 population is achieved by dividing the community's population by 1,000, then dividing the number of offenses in each class by that number. The answer is the number of offenses per 1,000 population and is the crime rate for that particular offense. In Table 2, the County Total Crime Rate is computed after subtracting the population figure for all non-reporting agencies for the current month.

The index offense "Aggravated Assault" is an item of special interest to users of Nevada's UCR report. In Tables 1 & 3, where Nevada and National crime rates are compared, "simple assaults" are subtracted from the total of all assaults following FBI UCR rules, thus allowing for direct comparison. However, total assaults (simple and aggravated) are also presented in the Nevada report. This is because the Nevada UCR staff believes this figure is an important indicator of risk for citizens and it presents a more balanced picture of this portion of the crime index to law enforcement personnel.

The Federal Bureau of Investigation, Uniform Crime Reporting Section, publishes national rates.

Clearance Rates

The percentage of crimes cleared is obtained by dividing the number of offenses cleared by the number of offenses known. This number is then multiplied by 100.

Nevada--Statewide Summary--UCR Index Crimes

October 2006

Offense	Crimes this Month	# Cleared this Month	% Cleared this Month	Crimes this YTD	# Cleared this YTD	% Cleared this YTD	September Crimes 2005	September Cleared 2005	% September Cleared 2005	2006 NV Rate / 1,000 (Proj) *	2006 NV Rate / 1,000	2005 Natl. Rate / 1,000
Murder	32	13	41	191	121	63	14	11	79	0.09	0.08	0.06
Rape	86	24	28	914	238	26	87	23	26	0.44	0.42	0.32
Robbery	585	104	18	5,666	1,013	18	405	58	14	2.70	2.14	1.41
Assault *	893	376	42	8,658	3,508	41	797	339	43	4.12	3.63	2.91
Burglary	2,085	243	12	20,522	1,872	9	2,006	339	17	9.78	10.07	7.27
Larceny	4,169	824	20	41,440	7,618	18	4,276	876	20	19.74	22.83	22.86
MV Theft	2,161	172	8	22,777	2,176	10	2,376	210	9	10.85	9.86	4.17
Arson	59	8	14	697	147	21	73	9	12	0.33	0.30	0.27
Total	10,070	1,764	18	100,865	16,693	17	10,034	1,865	19	48.05	49.33	39.27

* The projected Crime Rate for Assaults is computed after subtracting Simple Assaults from the total for all Assaults following FBI guidelines. Therefore, this rate may be compared directly to the National Rate. See Table 3 and the "Footnotes/Exceptions page for further information.

Nevada UCR - - Monthly Crime/ Clearance Summary - - All Crimes

Contributing Agency	Est. Pop	Murder		Rape		Robbery		Assault		Burglary		Larceny		MV Theft		Arson		Total Crimes	Crime Rate	Clearances	Clearance Rate
Carson County																		October 2006			
Carson SO	57,104	1	0	0	0	1	0	82	41	13	13	60	15	13	4	2	1	172	3.01	74	43.0%
County Total	57,104	1	0	0	0	1	0	82	41	13	13	60	15	13	4	2	1	172	3.01	74	43.0%
Churchill County																					
Churchill SO	18,246	0	0	1	1	0	0	18	13	7	0	21	2	0	0	0	0	47	2.58	16	34.0%
Fallon PD	8,339	0	0	0	0	0	0	23	17	8	0	33	6	1	0	0	0	65	7.79	23	35.4%
County Total	26,585	0	0	1	1	0	0	41	30	15	0	54	8	1	0	0	0	112	4.21	39	34.8%
Clark County																					
Boulder PD	15,203	0	0	0	0	0	0	2	1	9	1	12	1	1	0	0	0	24	1.58	3	12.5%
Clark Co. Sc	312,995	0	0	1	0	4	3	106	59	16	2	118	18	3	1	1	0	249	0.80	83	33.3%
Henderson	241,134	0	0	0	5	3	0	244	150	171	35	284	44	96	3	6	0	804	3.33	237	29.5%
LV Metro PD	1,505,401	16	10	60	8	466	75	2,448	1,047	1,236	118	2,187	473	1,524	119	25	0	7,962	5.29	1,850	23.2%
LV Fire Dept*																8	0	8	N/A	0	0.0%
Mesquite	16,423	0	0	0	0	0	0	24	22	1	1	21	7	2	0	0	0	48	2.92	30	62.5%
North Las Vegas	18,219	1	1	4	1	59	10	285	169	209	13	322	40	269	11	6	2	1,155	63.40	247	21.4%
Taxicab Authority		0	0	0	0	1	0	12	1	0	0	52	1	0	0	0	0	65	0.00	2	3.1%
UNLV PD*	26,345	0	0	0	0	0	0	5	2	9	0	22	1	3	0	0	0	39	1.48	3	7.7%
County Total	1,796,380	17	11	65	14	533	88	3,126	1,451	1,651	170	3,018	585	1,898	134	46	2	10,354	5.76	2,455	23.7%
Douglas County																					
Douglas SO	50,108	0	0	3	2	0	0	45	25	10	0	46	11	5	1	0	0	109	2.18	39	35.8%
County Total	50,108	0	0	3	2	0	0	45	25	10	0	46	11	5	1	0	0	109	2.18	39	35.8%

*Population figure not included in county total
Table 2

5
Assault data includes ALL assaults (aggravated and simple).

Nevada UCR - - Monthly Crime/ Clearance Summary - - All Crimes

Contributing Agency	Est. Pop	Murder		Rape		Robbery		Assault		Burglary		Larceny		MV Theft		Arson		Total Crimes	Crime Rate	Clearances	Clearance Rate
Elko County																		October 2006			
Elko SO	22,627	1	0	1	1	0	0	5	4	3	1	4	0	0	0	2	1	16	0.71	7	43.8%
Carlin PD	2,261	0	0	0	0	0	0	5	2	1	0	0	0	0	0	0	0	6	2.65	2	33.3%
Elko PD	17,850	0	0	1	0	0	0	30	14	8	1	36	0	4	0	0	0	79	4.43	15	19.0%
WestWendover	4,848	0	0	0	0	0	0	4	3	3	1	9	3	2	2	0	0	18	3.71	9	50.0%
County Total	47,586	1	0	2	1	0	0	44	23	15	3	49	3	6	2	2	1	119	2.50	33	27.7%
Esmeralda County																					
Esmeralda SO	1,276	0	0	0	0	0	0	0	0	0	0	1	0	0	0	0	0	1	0.78	0	0.0%
County Total	1,276	0	0	0	0	0	0	0	0	0	0	1	0	0	0	0	0	1	0.78	0	0.0%
Eureka County																					
Eureka SO	1,485	0	0	0	0	0	0	0	0	0	0	0	0	1	0	0	0	1	0.67	0	0.0%
County Total	1,485	0	0	0	0	0	0	0	0	0	0	0	0	1	0	0	0	1	0.67	0	0.0%
Humboldt County																					
Humboldt SO	9,892	0	0	0	0	0	0	3	1	1	0	3	1	0	0	0	0	7	0.71	2	28.6%
Winnemucca	7,401	0	0	0	0	0	0	14	12	5	1	6	5	0	0	1	1	26	3.51	19	
County Total	17,293	0	0	0	0	0	0	17	13	6	1	9	6	0	0	1	1	33	1.91	21	63.6%

*Population figure not included in county total
Table 2

6
Assault data includes ALL assaults (aggravated and simple).

Nevada UCR - - Monthly Crime/ Clearance Summary - - All Crimes

Contributing Agency	Est. Pop	Murder		Rape		Robbery		Assault		Burglary		Larceny		MV Theft		Arson		Total Crimes	Crime Rate	Clearances	Clearance Rate
October 2006																					
Lander County																					
Lander SO	5,509	0	0	1	0	1	0	12	8	1	1	4	2	0	0	0	0	19	3.45	11	57.9%
County Total	5,509	0	0	1	0	1	0	12	8	1	1	4	2	0	0	0	0	19	3.45	11	57.9%
Lincoln County																					
Lincoln SO	3,886	0	0	0	0	0	0	0	1	1	1	5	0	1	1	0	0	7	1.80	3	42.9%
County Total	3,886	0	0	0	0	0	0	0	1	1	1	5	0	1	1	0	0	7	1.80	3	42.9%
Lyon County																					
Lyon SO	45,880	0	0	0	0	1	0	53	14	22	1	49	4	10	3	3	2	138	3.01	24	17.4%
Yerington PI	2,980	0	0	0	0	0	0	1	3	2	2	3	0	0	0	0	0	6	2.01	5	83.3%
County Total	48,860	0	0	0	0	1	0	54	17	24	3	52	4	10	3	3	2	144	2.95	29	20.1%
Mineral County																					
Mineral SO	4,629	0	0	0	0	0	0	2	2	2	0	1	0	0	0	0	0	5	1.08	2	40.0%
County Total	4,629	0	0	0	0	0	0	2	2	2	0	1	0	0	0	0	0	5	1.08	2	40.0%
Nye County																					
Nye SO	41,302	0	0	0	0	0	0	0	0	0	0	0	0	0	0	0	0	0	0.00	0	0.0%
County Total	41,302	0	0	0	0	0	0	0	0	0	0	0	0	0	0	0	0	0	0.00	0	0.0%

*Population figure not included in county total
Table 2

7
Assault data includes ALL assaults (aggravated and simple).

Nevada UCR - - Monthly Crime/ Clearance Summary - - All Crimes

Contributing Agency	Est. Pop	Murder		Rape		Robbery		Assault		Burglary		Larceny		MV Theft		Arson		Total Crimes	Crime Rate	Clearances	Clearance Rate
Pershing County																		October 2006			
Pershing SO	4,373	0	0	0	0	0	0	0	0	0	0	0	0	0	0	0	0	0	0.00	0	0.0%
Lovelock PD	2,363	0	0	0	0	0	0	0	0	0	0	0	0	0	0	0	0	0	0.00	0	0.0%
County Total	6,736	0	0	0	0	0	0	0	0	0	0	0	0	0	0	0	0	0	0.00	0	0.0%
Storey County																					
Storey	4,012	0	0	0	0	0	0	0	0	0	0	0	0	0	0	0	0	0	0.00	0	0.0%
County Total	4,012	0	0	0	0	0	0	0	0	0	0	0	0	0	0	0	0	0	0.00	0	0.0%
Washoe County																					
Washoe SO	101,491	0	0	0	0	5	0	90	50	46	5	65	8	18	9	0	0	224	2.21	72	32.1%
Reno PD	206,735	13	2	9	3	34	13	422	226	207	19	599	144	158	10	2	0	1,444	6.98	417	28.9%
Sparks PD	85,618	0	0	3	1	10	3	98	79	84	25	176	34	45	7	1	1	417	4.87	150	36.0%
UNR PD*	16,671	0	0	1	1	0	0	1	1	5	0	16	0	3	0	0	0	26	1.56	2	7.7%
Washoe Co :	65,000	0	0	0	0	0	0	9	8	2	2	6	2	0	0	2	0	19	0.29	12	63.2%
TMCC PD*	13,563	0	0	0	0	0	0	1	0	0	0	0	0	0	0	0	0	1	0.07	0	0.0%
County Total	393,844	13	2	13	5	49	16	621	364	344	51	862	188	224	26	5	1	2,131	5.41	653	30.6%
White Pine County																					
White Pine S	9,275	0	0	1	1	0	0	5	5	3	0	8	2	2	1	0	0	19	2.05	9	47.4%
County Total	9,275	0	0	1	1	0	0	5	5	3	0	8	2	2	1	0	0	19	2.05	9	47.4%
Grand Total	2,515,870	32	13	86	24	585	104	4,049	1,980	2,085	243	4,169	824	2,161	172	59	8	13,226	5.26	3,368	25.5%

*Population figure not included in county total
Table 2

8
Assault data includes ALL assaults (aggravated and simple).

Nevada UCR - - **Monthly Crimes/Clearances Summary** - - Index Crimes

October 2006

Est. Pop	Murder		Rape		Robbery		Assault		Burglary		Larceny		MV Theft		Arson		Total Crimes	Crime Rate	Total Clear	Clearance Rate	
Statewide Totals																					
(Crimes/Clearances)	2,518,870	32	13	86	24	585	104	893	376	2085	243	4169	824	2161	172	59	8	10070	4.00	1764	17.52

Nevada (Projected 2006) vs National (2005) Index Crime Rates

(per 1,000 population)

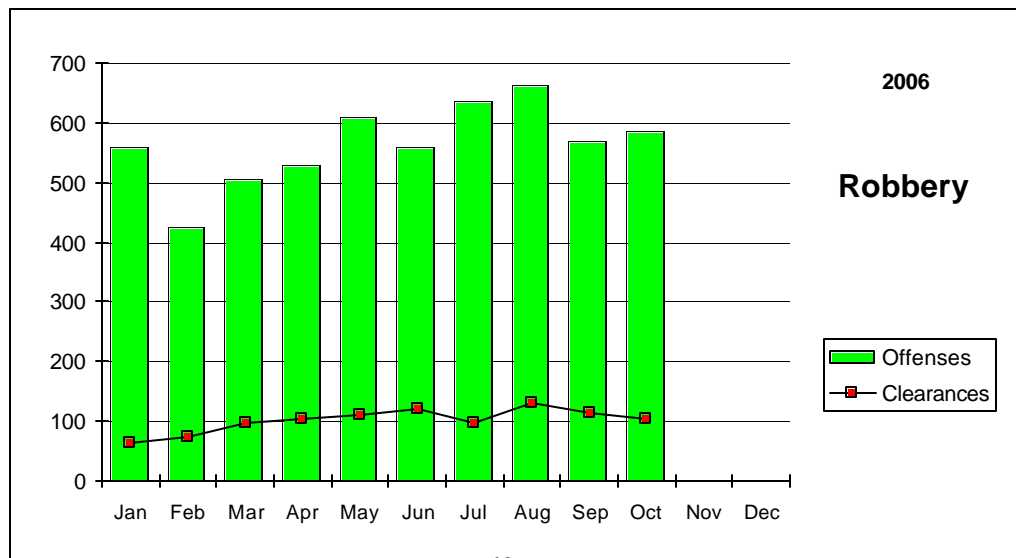
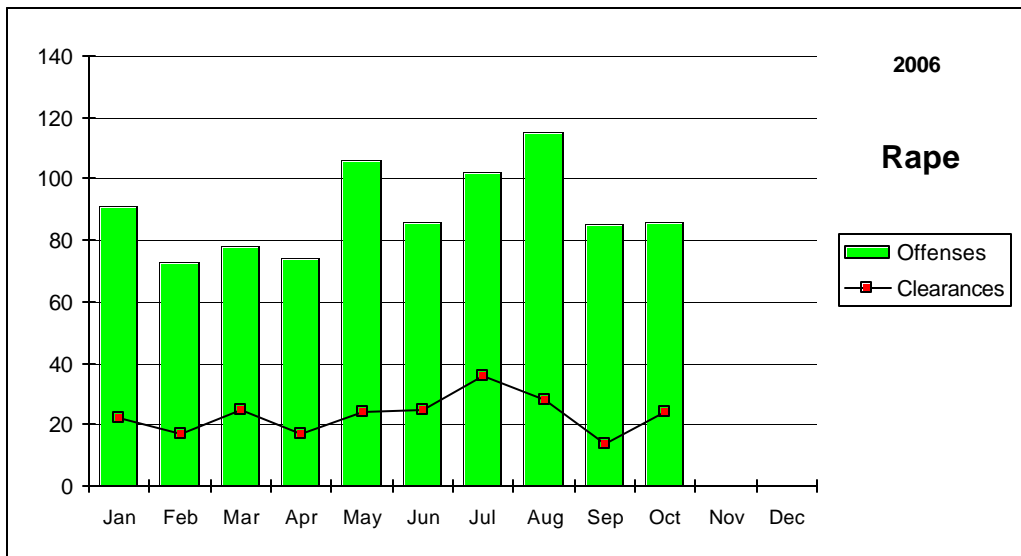
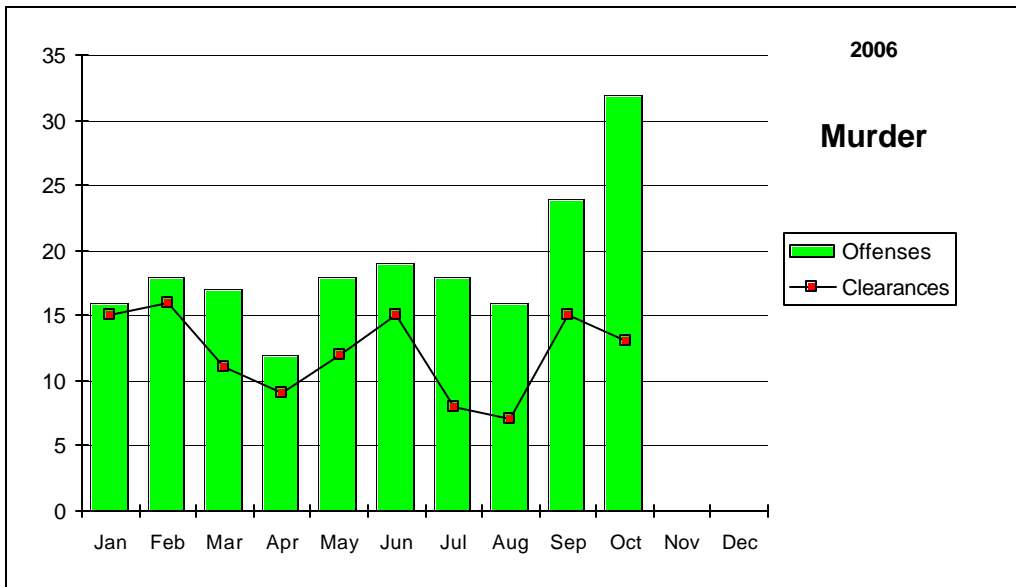
	Murder	Rape	Robbery	Assault	Burglary	Larceny	MV Theft	Arson	Crime Rate
Nevada	0.09	0.44	2.70	4.12	9.78	19.74	10.85	0.33	48.05
National	0.06	0.32	1.41	2.91	7.27	22.86	4.17	0.27	39.27

Nevada (Projected 2006) vs National (2005) Crime Clearance Rates

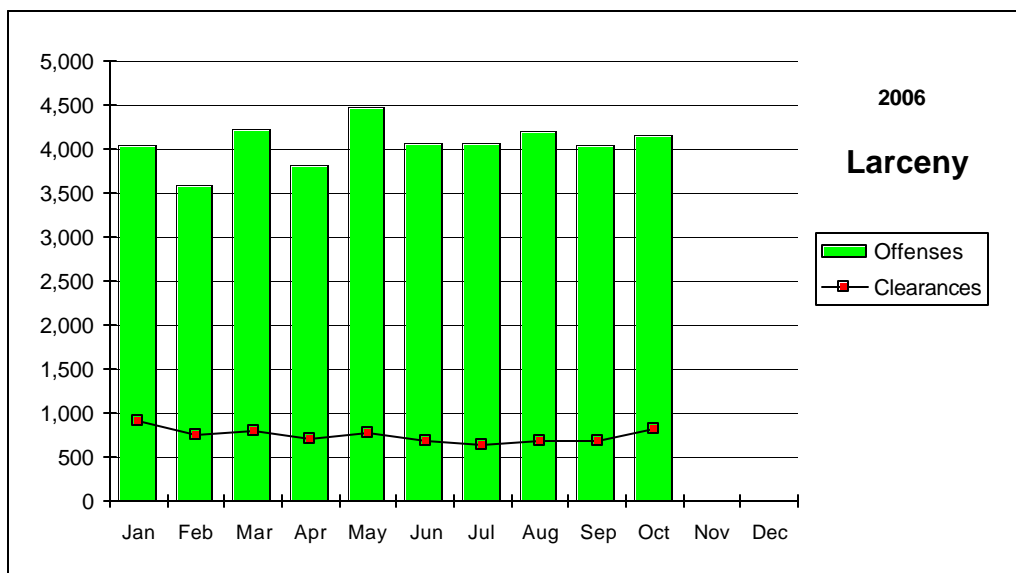
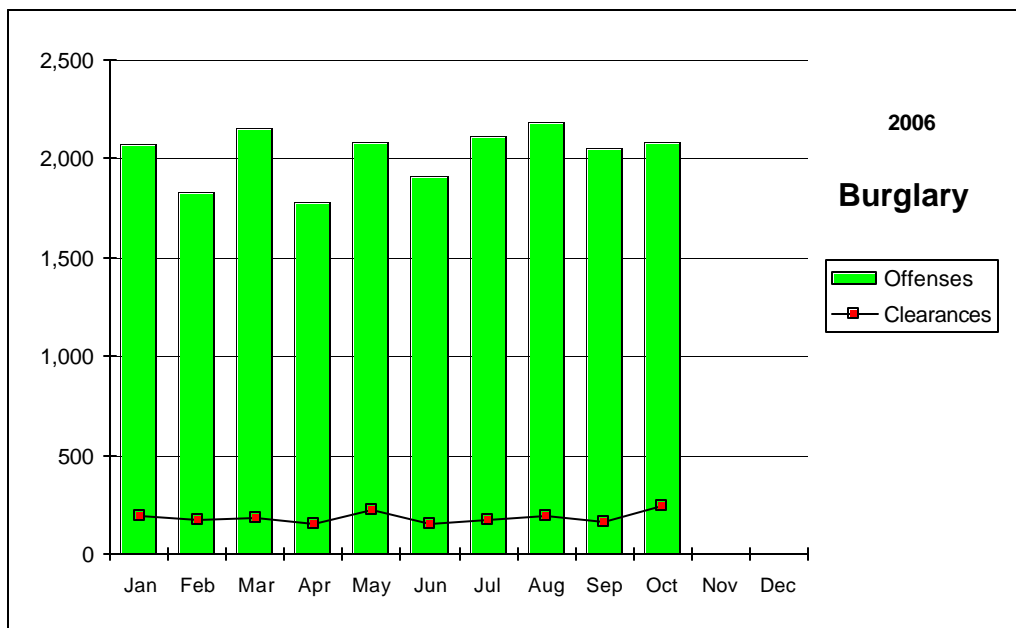
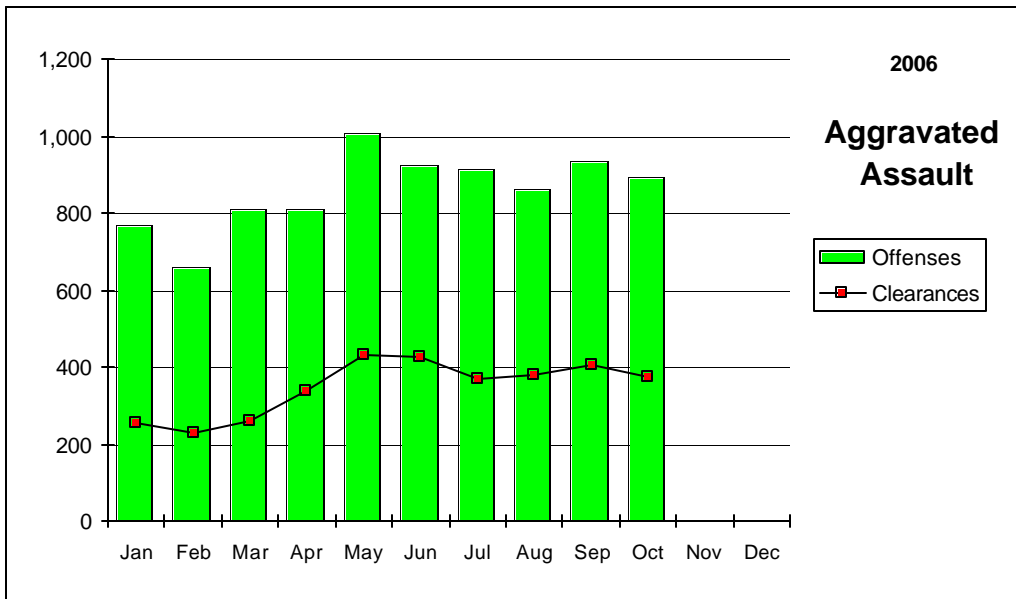
(by Percent)

	Murder	Rape	Robbery	Assault	Burglary	Larceny	MV Theft	Arson	Clear Rate
Nevada	63.4	26.0	17.9	40.5	9.1	18.4	9.6	21.1	21.8
National	62.1	41.3	25.4	55.2	12.7	18.0	13.0	17.9	19.7

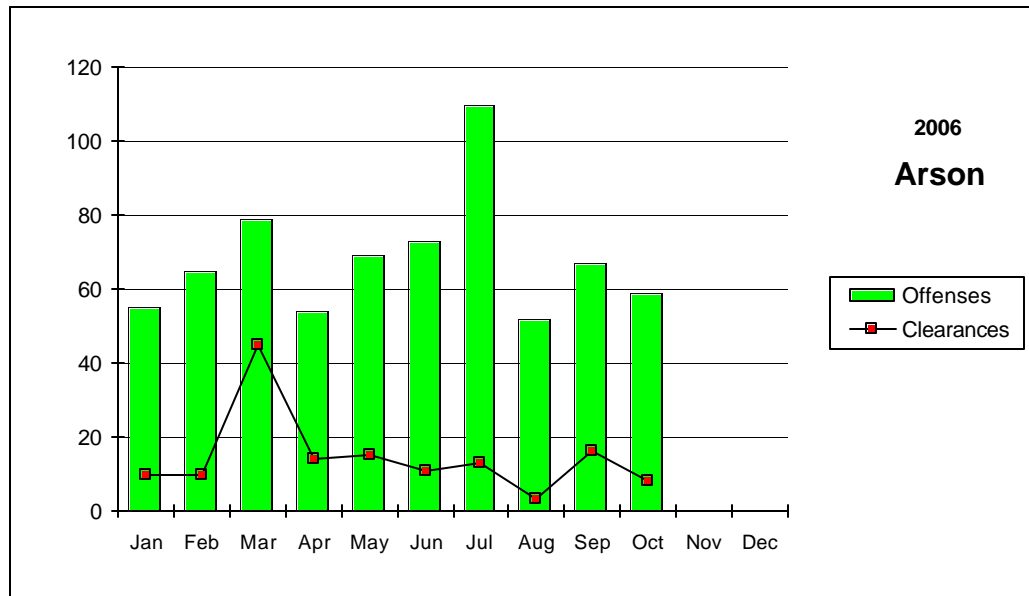
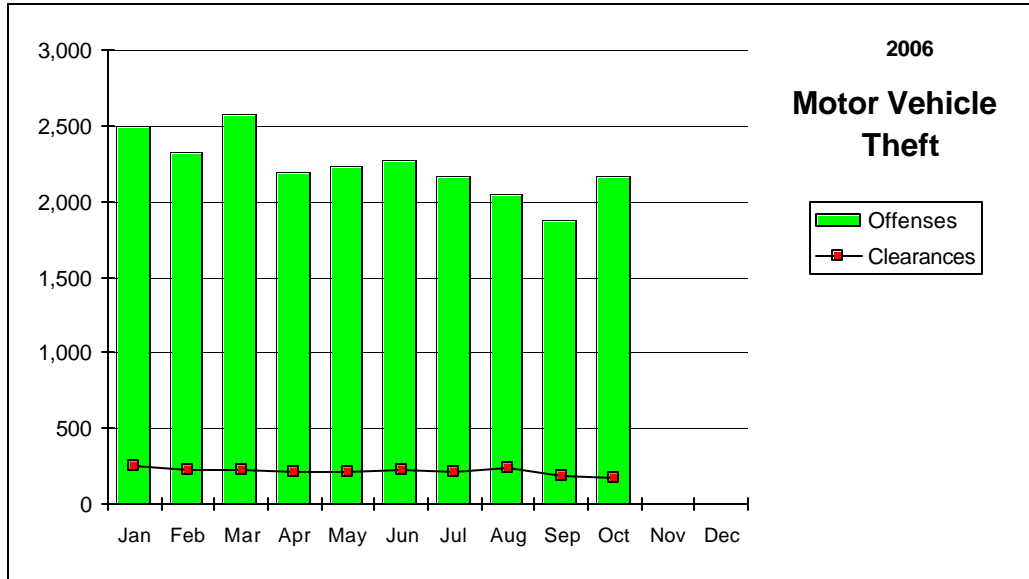
Nevada--Graphic Summary--UCR



Nevada--Graphic Summary--UCR



Nevada--Graphic Summary--UCR



Nevada--Murder--Incidence Level Variation--UCR

October 2006

Agency	October 2006 Offenses	October 2006 Cleared	YTD Offense s	2006 YTD Cleared	October 2005 Offenses	October 2005 Cleared	YTD Offense s	2005 YTD Cleared
Boulder	0	0	1	0	0	0	1	1
Carlin PD	0	0	0	0	0	0	0	0
Carson SO	1	0	3	1	1	1	2	3
Churchill SO	0	0	0	0	0	0	1	1
Clark Co Schl PD	0	0	0	0	0	0	0	0
Douglas SO	0	0	1	0	0	0	1	1
Elko PD	0	0	0	0	0	0	0	0
Elko SO	1	0	1	0	0	0	0	0
Esmeralda SO	0	0	0	0	0	0	0	0
Eureka SO	0	0	0	0	0	0	0	0
Fallon PD	0	0	0	0	0	0	2	2
Henderson PD	0	0	5	1	1	0	10	5
Humboldt SO	0	0	0	0	0	0	0	0
Lander SO	0	0	0	0	0	0	0	0
Lincoln SO	0	0	0	0	0	0	0	0
Lovelock PD	0	0	0	0	0	0	0	0
LV Fire Dept	0	0	0	0	0	0	0	0
LV Metro	16	10	129	90	7	7	123	96
Lyon SO	0	0	1	1	0	0	1	1
Mesquite PD	0	0	1	1	0	0	0	0
Mineral SO	0	0	0	0	0	0	0	0
NLVPD	1	1	17	8	2	0	16	6
Nye SO	0	0	2	3	0	0	3	3
Pershing SO	0	0	1	1	0	0	0	0
Reno PD	13	2	20	9	2	2	6	5
Sparks PD	0	0	3	4	1	1	4	3
Storey SO	0	0	0	0	0	0	0	0
Taxicab Authority	0	0	0	0	0	0	0	0
TMCC PD	0	0	0	0	0	0	0	0
UNLV PD	0	0	0	0	0	0	0	0
UNR PD	0	0	0	0	0	0	0	0
Washoe SO	0	0	4	0	0	0	0	0
Washoe Co Schl PD	0	0	0	0	0	0	0	0
Wendover PD	0	0	1	1	0	0	0	0
White Pine SO	0	0	0	0	0	0	1	0
Winnemucca PD	0	0	1	1	0	0	1	1
Yerington PD	0	0	0	0	0	0	0	0
TOTALS	32	13	191	121	14	11	172	128

Nevada--Rape--Incidence Level Variation-UCR

October 2006

Agency	October 2006 Offenses	October 2006 Cleared	2006 YTD Offenses	2006 YTD Cleared	October 2005 Offenses	October 2005 Cleared	2005 YTD Offenses	2005 YTD Cleared
Boulder	0	0	2	1	0	0	2	0
Carlin PD	0	0	0	0	0	0	1	0
Carson SO	0	0	2	0	2	0	2	0
Churchill SO	1	1	9	15	1	1	11	17
Clark Co Schl PD	1	0	3	0	0	0	5	0
Douglas SO	3	2	20	14	3	4	22	13
Elko PD	1	0	7	2	0	0	15	5
Elko SO	1	1	5	1	0	0	6	4
Esmeralda SO	0	0	0	0	0	0	0	0
Eureka SO	0	0	1	0	0	0	0	0
Fallon PD	0	0	0	0	0	0	0	0
Henderson PD	0	5	59	34	1	0	33	9
Humboldt SO	0	0	0	0	0	0	0	0
Lander SO	1	0	9	8	2	0	8	1
Lincoln SO	0	0	0	0	0	0	1	0
Lovelock PD	0	0	0	2	0	0	1	0
LV Fire Dept	0	0	0	0	0	0	0	0
LV Metro	60	8	602	100	59	9	534	90
Lyon SO	0	0	4	2	1	0	8	2
Mesquite PD	0	0	1	1	0	0	1	1
Mineral SO	0	0	1	1	0	0	1	1
NLVPD	4	1	45	18	4	3	47	19
Nye SO	0	0	7	6	1	1	9	8
Pershing SO	0	0	5	0	0	0	5	4
Reno PD	9	3	84	16	8	3	95	19
Sparks PD	3	1	36	12	5	2	45	22
Storey SO	0	0	0	0	0	0	0	0
Taxicab Authority	0	0	0	0	0	0	0	0
TMCC PD	0	0	0	0	0	0	0	0
UNLV PD	0	0	0	0	0	0	3	1
UNR PD	1	1	4	1	0	0	4	1
Washoe SO	0	0	0	0	0	0	2	0
Washoe Co Schl PD	0	0	0	0	0	0	0	0
Wendover PD	0	0	2	1	0	0	7	7
White Pine SO	1	1	4	2	0	0	3	1
Winnemucca PD	0	0	2	1	0	0	1	0
Yerington PD	0	0	0	0	0	0	1	3
TOTALS	86	24	914	238	87	23	873	228

Nevada--Robbery--Incidence Level Variation--UCR

October 2006

Agency	October 2006 Offenses	October 2006 Cleared	YTD Offenses	2006 YTD Cleared	October 2005 Offenses	October 2005 Cleared	YTD Offenses	2005 YTD Cleared
Boulder	0	0	3	1	0	0	1	1
Carlin PD	0	0	0	0	0	0	0	0
Carson SO	1	0	18	11	3	1	26	12
Churchill SO	0	0	0	0	1	1	1	1
Clark Co Schl PD	4	3	40	16	1	0	15	2
Douglas SO	0	0	1	0	1	0	15	6
Elko PD	0	0	7	2	0	0	7	3
Elko SO	0	0	0	0	0	0	4	3
Esmeralda SO	0	0	0	0	0	0	0	0
Eureka SO	0	0	0	0	0	0	0	0
Fallon PD	0	0	3	1	0	0	4	3
Henderson PD	3	0	67	11	14	1	108	23
Humboldt SO	0	0	1	1	0	0	1	1
Lander SO	1	0	2	0	0	0	2	1
Lincoln SO	0	0	0	0	0	0	0	0
Lovelock PD	0	0	0	0	0	0	0	0
LV Fire Dept	0	0	0	0	0	0	0	0
LV Metro	466	75	4,427	714	296	34	2,780	431
Lyon SO	1	0	5	2	0	0	8	3
Mesquite PD	0	0	2	1	0	0	4	3
Mineral SO	0	0	0	0	0	0	0	0
NLVPD	59	10	479	74	39	8	330	74
Nye SO	0	0	8	5	1	0	7	3
Pershing SO	0	0	0	0	0	0	1	1
Reno PD	34	13	445	123	34	9	325	100
Sparks PD	10	3	99	33	8	2	71	28
Storey SO	0	0	0	0	0	0	0	0
Taxicab Authority	1	0	31	7	0	0	0	0
TMCC PD	0	0	0	0	0	0	0	0
UNLV PD	0	0	0	0	1	1	4	1
UNR PD	0	0	0	0	1	0	3	1
Washoe SO	5	0	20	5	2	1	12	4
Washoe Co Schl PD	0	0	2	2	2	0	5	1
Wendover PD	0	0	2	1	0	0	4	3
White Pine SO	0	0	1	1	1	0	1	0
Winnemucca PD	0	0	3	2	0	0	4	2
Yerington PD	0	0	0	0	0	0	0	0
TOTALS	585	104	5,666	1,013	405	58	3,743	711

Nevada--Aggravated Assault--Incidence Level Variation--UCR

October 2006

Agency	October 2006 Offenses	October 2006 Cleared	YTD Offense s	2006 YTD Cleared	October 2005 Offenses	October 2005 Cleared	YTD Offense s	2005 YTD Cleared
Boulder	1	1	9	7	0	0	12	9
Carlin PD	5	2	27	22	3	2	19	10
Carson SO	19	8	142	90	41	18	234	114
Churchill SO	4	5	37	35	2	4	28	27
Clark Co Schl PD	5	1	44	20	11	4	48	32
Douglas SO	3	1	49	26	3	1	38	22
Elko PD	2	2	28	13	0	0	10	4
Elko SO	1	1	12	11	1	1	17	10
Esmeralda SO	0	0	3	3	0	0	2	1
Eureka SO	0	0	5	4	0	0	4	1
Fallon PD	3	4	12	11	2	0	14	7
Henderson PD	27	13	245	143	25	15	205	122
Humboldt SO	2	1	42	40	3	3	48	43
Lander SO	6	4	18	16	0	0	7	6
Lincoln SO	0	0	3	3	0	0	3	3
Lovelock PD	0	0	7	5	0	1	7	7
LV Fire Dept	0	0	0	0	0	0	0	0
LV Metro	606	220	5,735	1,883	476	163	4,327	1,364
Lyon SO	5	2	62	41	10	10	81	75
Mesquite PD	3	3	20	16	2	1	18	14
Mineral SO	0	0	6	6	1	1	6	6
NLVPD	73	45	824	383	78	44	760	396
Nye SO	0	0	81	69	7	7	81	76
Pershing SO	0	0	41	28	4	1	35	15
Reno PD	73	37	710	347	82	32	837	379
Sparks PD	13	9	187	129	21	14	168	115
Storey SO	0	0	0	0	0	0	0	0
Taxicab Authority	12	1	86	20	8	7	37	20
TMCC PD	0	0	0	0	0	0	0	0
UNLV PD	2	1	4	1	1	1	5	2
UNR PD	1	1	25	10	0	0	7	4
Washoe SO	19	6	144	80	10	5	160	77
Washoe Co Schl PD	3	3	10	10	2	0	9	4
Wendover PD	1	1	8	7	1	1	18	17
White Pine SO	3	3	22	20	1	1	24	21
Winnemucca PD	1	1	10	9	2	2	14	13
Yerington PD	0	0	0	0	0	0	1	1
TOTALS	893	376	8,658	3,508	797	339	7,284	3,017

Nevada--All Assaults--Incidence Level Variation--UCR

October 2006

Agency	October 2006 Offenses	October 2006 Cleared	2006 YTD Offenses	2006 YTD Cleared	October 2005 Offenses	October 2005 Cleared	2005 YTD Offenses	2005 YTD Cleared
Boulder	2	1	27	18	2	0	36	20
Carlin PD	5	2	28	22	3	2	29	19
Carson SO	82	41	710	358	82	36	661	373
Churchill SO	18	13	205	182	11	14	211	199
Clark Co Schl PD	106	59	636	343	111	47	743	437
Douglas SO	45	25	530	401	59	33	555	415
Elko PD	30	14	296	178	22	14	223	100
Elko SO	5	4	93	66	14	9	119	76
Esmeralda SO	0	0	5	5	1	1	10	9
Eureka SO	0	0	8	6	0	0	17	12
Fallon PD	23	17	175	127	24	10	231	167
Henderson PD	244	150	2,375	1,477	211	116	2,055	1,183
Humboldt SO	3	1	50	47	4	6	58	53
Lander SO	12	8	96	80	11	9	75	38
Lincoln SO	0	1	18	27	3	4	25	19
Lovelock PD	0	0	49	48	2	5	39	40
LV Fire Dept	0	0	0	0	0	0	0	0
LV Metro	2,448	1,047	22,987	7,752	1,978	553	20,636	7,122
Lyon SO	53	14	483	254	61	59	530	505
Mesquite PD	24	22	193	172	19	17	155	146
Mineral SO	2	2	53	53	5	5	40	33
NLVPD	285	169	2,914	1,551	266	172	2,864	1,695
Nye SO	0	0	526	507	52	50	476	458
Pershing SO	0	0	47	31	6	1	49	22
Reno PD	422	226	4,130	2,162	382	207	3,801	2,002
Sparks PD	98	79	1,179	779	149	93	1,164	742
Storey SO	0	0	31	19	2	1	29	10
Taxicab Authority	12	1	89	20	8	7	37	20
TMCC PD	1	0	3	1	0	0	1	0
UNLV PD	5	2	31	15	3	2	21	9
UNR PD	1	1	32	12	1	0	17	6
Washoe SO	90	50	843	468	98	76	871	483
Washoe Co Schl PD	9	8	74	73	6	0	57	20
Wendover PD	4	3	76	77	8	8	84	76
White Pine SO	5	5	80	72	6	6	104	98
Winnemucca PD	14	12	69	60	11	11	87	83
Yerington PD	1	3	28	29	0	0	43	43
TOTALS	4,049	1,980	39,169	17,492	3,621	1,574	36,153	16,733

Nevada--Burglary--Incidence Level Variation--UCR

October 2006

Agency	October 2006 Offenses	October 2006 Cleared	YTD Offenses	2006 YTD Cleared	October 2005 Offenses	October 2005 Cleared	YTD Offenses	2005 YTD Cleared
Boulder	9	1	87	9	11	2	112	17
Carlin PD	1	0	18	3	1	0	27	5
Carson SO	13	13	240	65	36	7	326	80
Churchill SO	7	0	89	27	7	0	94	34
Clark Co SchI PD	16	2	205	32	36	9	209	43
Douglas SO	10	0	181	44	21	5	195	44
Elko PD	8	1	122	20	16	2	100	20
Elko SO	3	1	81	14	15	0	88	6
Esmeralda SO	0	0	1	1	0	0	2	0
Eureka SO	0	0	7	1	0	0	3	1
Fallon PD	8	0	46	10	6	1	48	8
Henderson PD	171	35	1,322	189	134	9	1,303	146
Humboldt SO	1	0	10	4	2	2	14	9
Lander SO	1	1	37	27	3	0	46	7
Lincoln SO	1	1	6	6	3	0	16	6
Lovelock PD	0	0	13	12	1	2	14	5
LV Fire Dept	0	0	0	0	0	0	0	0
LV Metro	1,236	118	12,433	752	1,179	249	11,998	2,872
Lyon SO	22	1	172	28	24	0	206	27
Mesquite PD	1	1	10	4	1	0	16	5
Mineral SO	2	0	21	6	2	0	37	5
NLVPD	209	13	2,075	137	177	12	1,509	119
Nye SO	0	0	187	30	29	8	193	59
Pershing SO	0	0	26	3	0	2	28	10
Reno PD	207	19	1,693	140	156	6	1,579	154
Sparks PD	84	25	721	196	69	14	596	193
Storey SO	0	0	13	3	3	0	13	1
Taxicab Authority	0	0	0	0	0	0	0	0
TMCC PD	0	0	3	0	2	0	7	0
UNLV PD	9	0	56	2	10	0	69	3
UNR PD	5	0	12	1	0	0	27	5
Washoe SO	46	5	464	43	38	4	381	40
Washoe Co SchI PD	2	2	23	4	5	0	37	7
Wendover PD	3	1	43	12	7	0	44	13
White Pine SO	3	0	50	7	8	2	53	17
Winnemucca PD	5	1	30	18	4	3	35	16
Yerington PD	2	2	25	22	0	0	25	19
TOTALS	2,085	243	20,522	1,872	2,006	339	19,450	3,996

Nevada--Larceny--Incidence Level Variation--UCR

October 2006

Agency	October 2006 Offenses	October 2006 Cleared	2006 YTD Offenses	2006 YTD Cleared	October 2005 Offense	October 2005 Cleared	2005 YTD Offenses	2005 YTD Cleared
Boulder	12	1	109	8	12	1	113	5
Carlin PD	0	0	9	2	2	0	20	2
Carson SO	60	15	669	152	89	21	797	220
Churchill SO	21	2	124	41	4	2	130	56
Clark Co Schl PD	118	18	723	104	82	12	670	107
Douglas SO	46	11	619	113	57	16	666	192
Elko PD	36	0	372	32	26	4	380	36
Elko SO	4	0	81	10	9	1	83	4
Esmeralda SO	1	0	5	4	0	0	3	0
Eureka SO	0	0	8	1	1	0	7	3
Fallon PD	33	6	276	46	45	6	365	82
Henderson PD	284	44	3,016	475	239	71	3,004	677
Humboldt SO	3	1	28	12	1	1	40	15
Lander SO	4	2	47	29	10	0	73	10
Lincoln SO	5	0	24	5	2	0	16	3
Lovelock PD	0	0	13	10	3	3	25	16
LV Fire Dept	0	0	0	0	0	0	0	0
LV Metro	2,187	473	22,170	4,242	2,146	450	23,106	5,158
Lyon SO	49	4	366	59	48	10	444	68
Mesquite PD	21	7	226	63	26	9	240	57
Mineral SO	1	0	15	3	2	0	18	2
NLVPD	322	40	2,850	427	287	47	2,660	545
Nye SO	0	0	344	104	54	17	600	252
Pershing SO	0	0	11	2	2	0	40	5
Reno PD	599	144	5,775	1,214	709	139	6,256	1,541
Sparks PD	176	34	1,718	244	172	32	1,674	366
Storey SO	0	0	31	3	7	1	41	2
Taxicab Authority	52	1	364	12	62	5	141	9
TMCC PD	0	0	11	0	3	0	8	0
UNLV PD	22	1	205	13	25	2	199	13
UNR PD	16	0	127	3	15	0	127	5
Washoe SO	65	8	683	62	64	5	609	57
Washoe Co Schl PD	6	2	138	41	29	0	226	41
Wendover PD	9	3	120	28	20	6	122	43
White Pine SO	8	2	96	30	14	7	104	28
Winnemucca PD	6	5	56	18	9	8	88	39
Yerington PD	3	0	11	6	0	0	22	15
TOTALS	4,169	824	41,440	7,618	4,276	876	43,117	9,674

Nevada--MV Theft--Incidence Level Variation--UCR

October 2006

Agency	October	October	2006 YTD	2006 YTD	October	October	2005 YTD	2005 YTD
	2006 Offenses	2006 Cleared	Offenses	Cleared	2005 Offenses	2005 Cleared	Offenses	Cleared
Boulder	1	0	21	1	2	0	41	0
Carlin PD	0	0	5	1	1	1	1	4
Carson SO	13	4	102	32	14	5	99	29
Churchill SO	0	0	14	5	0	1	23	11
Clark Co Schl PD	3	1	42	11	2	0	37	6
Douglas SO	5	1	56	35	3	3	48	34
Elko PD	4	0	48	6	4	0	31	1
Elko SO	0	0	16	2	0	0	21	7
Esmeralda SO	0	0	1	1	0	0	1	1
Eureka SO	1	0	4	1	0	0	0	0
Fallon PD	1	0	24	8	1	1	21	7
Henderson PD	96	3	1,250	33	123	1	1,163	48
Humboldt SO	0	0	4	3	0	0	5	4
Lander SO	0	0	6	6	1	1	4	1
Lincoln SO	1	1	8	5	1	0	7	4
Lovelock PD	0	0	2	1	0	0	4	3
LV Fire Dept	0	0	0	0	0	0	0	0
LV Metro	1,524	119	16,667	1,518	1,722	140	16,247	1,673
Lyon SO	10	3	70	30	7	0	64	17
Mesquite PD	2	0	49	12	9	2	40	6
Mineral SO	0	0	4	2	1	0	4	1
NLVPD	269	11	2,205	91	204	7	2,003	103
Nye SO	0	0	140	62	10	9	126	85
Pershing SO	0	0	1	1	0	0	4	2
Reno PD	158	10	1,364	164	187	21	1,170	151
Sparks PD	45	7	378	67	51	9	359	89
Storey SO	0	0	2	0	0	0	5	0
Taxicab Authority	0	0	11	0	1	0	4	0
TMCC PD	0	0	0	0	0	0	0	0
UNLV PD	3	0	35	2	2	2	22	3
UNR PD	3	0	11	1	0	0	5	0
Washoe SO	18	9	184	47	23	2	206	33
Washoe Co Schl PD	0	0	0	0	0	0	1	0
Wendover PD	2	2	16	13	4	3	16	11
White Pine SO	2	1	25	11	0	0	14	8
Winnemucca PD	0	0	12	4	3	2	19	10
Yerington PD	0	0	0	0	0	0	0	0
TOTALS	2,161	172	22,777	2,176	2,376	210	21,815	2,352

Nevada--Arson--Incidence Level Variation--UCR

October 2006

Agency	October 2006	October 2006	2006 YTD		October 2005	October 2005	2005 YTD	
	Offenses	Cleared	Offenses	Cleared	Offenses	Cleared	Offenses	Cleared
Boulder	0	0	3	0	0	0	2	0
Carlin PD	0	0	0	0	0	0	0	0
Carson SO	2	1	8	4	1	0	18	4
Churchill SO	0	0	2	2	1	0	3	1
Clark Co Schl PD	1	0	68	22	2	0	42	8
Douglas SO	0	0	6	4	0	0	4	1
Elko PD	0	0	8	1	0	0	7	1
Elko SO	2	1	3	1	0	0	0	0
Esmeralda SO	0	0	0	0	0	0	0	0
Eureka SO	0	0	0	0	0	0	0	0
Fallon PD	0	0	0	0	0	0	0	0
Henderson PD	6	0	73	13	12	3	86	29
Humboldt SO	0	0	1	1	0	0	2	1
Lander SO	0	0	0	0	0	0	0	0
Lincoln SO	0	0	1	2	1	1	1	1
Lovelock PD	0	0	0	0	0	0	0	0
LV Fire Dept	8	0	67	10	14	0	93	18
LV Metro	25	0	272	34	22	0	267	0
Lyon SO	3	2	16	4	1	0	6	3
Mesquite PD	0	0	0	0	0	0	0	0
Mineral SO	0	0	1	1	0	0	2	1
NLVPD	6	2	52	8	4	0	34	2
Nye SO	0	0	27	21	5	2	16	9
Pershing SO	0	0	0	0	0	0	0	0
Reno PD	2	0	33	3	3	1	45	4
Sparks PD	1	1	18	5	1	0	6	6
Storey SO	0	0	0	0	0	0	1	0
Taxicab Authority	0	0	0	0	0	0	0	0
TMCC PD	0	0	0	0	0	0	0	0
UNLV PD	0	0	1	0	2	0	1	1
UNR PD	0	0	0	0	0	0	0	0
Washoe SO	0	0	9	1	1	1	3	1
Washoe CO Scl PD	2	0	17	2	2	0	14	0
Wendover PD	0	0	3	2	1	1	1	0
White Pine SO	0	0	1	0	0	0	1	1
Winnemucca PD	1	1	7	6	0	0	1	1
Yerington PD	0	0	0	0	0	0	0	0
TOTALS	59	8	697	147	73	9	656	93

State of Nevada

Hate Crimes Reports for October 2006

#	Agency	ORI	Incident #	Date of Incident	UCR Offense	Location	Bias Motivation	Victim Type and Number	Offender Race and Number
1	LVMPD	NV0020100	061001-2408	10/10/2006	11-Destruction/Damage	20-Home/Residence	12-Anti-Black	Individual-1	Unknown-00
2	LVMPD	NV0020101	061004-2692	10/10/2006	04-Aggravated Assault	13-Highway/Alley	32-Anti-Hispanic	Individual-1	Black-01
3	LVMPD	NV0020102	061006-0925	10/6/2006	10-Intimidation	21-Restraurant	12-Anti-Black	Individual-1	White-01
4	LVMPD	NV0020103	061008-3022	10/7/2006	10-Intimidation	25-Other/Cell Phone	41-Anti-Homosexual	Individual-1	White-04
5	LVMPD	NV0020105	061014-2586	10/14/2006	11-Destruction/Damage	04-Church/Synagogue	22-Anti-Catholic	Business-1	White-03
6	LVMPD	NV0020106	061017-2236	10/17/2006	10-Intimidation	20-Residence/Home	12-Anti-Black	Individual-2	White-01
7	LVMPD	NV0020107	061019-2379	10/19/2006	19-Simple Assault	05-Commercial building	12-Anti-Black	Individual-1	White-01
8	LVMPD	NV0020108	061019-3564	10/19/2006	09-Simple Assault	13-Highway/Alley	41-Anti-Homosexual	Individual-1	White-01
9	LVMPD	NV0020109	061020-2094	10/20/2006	10-Intimidation	20-Residence/Home	12-Anti-Black	Individual-1	White-04
10	LVMPD	NV0020110	061021-0906	10/21/2006	09-Simple Assault	13-Highway/Alley	32-Anti-Hispanic	Individual-1	White-03
11	LVMPD	NV0020111	061031-2349	10/31/2006	11-Destruction/Damage	20-Residence/Home	12-Anti-Black	Individual-1	Unknown-00
12	NLVDPD	NV0020201	06-27367	10/19/2006	09-Simple Assault	13-Highway/Alley	32-Anti-Hispanic	Individual-1	Black-08
13	RENO	NV0160100	60044072	10/28/2006	09-Simple Assault	18-Parking Lot/Garage	42-Anti-Female Homosexual	Individual-1	Black-01

Stolen/Recovered Property Report

October 2006

Property Type	Boulder PD	Carlin PD	Carson SO	Churchill SO	Clark Co Schl PD	Douglas SO	Elko PD	Elko SO	Esmeralda SO
Currency									
Stolen	\$102,964	\$0	\$2,955	\$1,872	\$1,760	\$4,451	\$1,120	\$0	\$0
Recovered	\$0	\$0	\$0	\$22	\$0	\$1,500	\$0	\$0	\$0
% Recovered	0.0%	0.0%	0.0%	1.2%	0.0%	33.7%	0.0%	0.0%	0.0%
Jewelry									
Stolen	\$20,000	\$0	\$10,959	\$2,700	\$20	\$35,315	\$1,000	\$0	\$0
Recovered	\$10,000	\$0	\$0	\$2,600	\$0	\$25,350	\$0	\$0	\$0
% Recovered	50.0%	0.0%	0.0%	96.3%	0.0%	71.8%	0.0%	0.0%	0.0%
Clothing									
Stolen	\$20	\$0	\$3,089	\$429	\$205	\$1,772	\$430	\$0	\$0
Recovered	\$0	\$0	\$2,019	\$70	\$0	\$823	\$0	\$0	\$0
% Recovered	0.0%	0.0%	65.4%	16.3%	0.0%	46.4%	0.0%	0.0%	0.0%
Motor Vehicle									
Stolen	\$3,000	\$0	\$166,250	\$13,485	\$5,000	\$49,750	\$58,500	\$0	\$0
Recovered	\$0	\$0	\$105,000	\$9,285	\$0	\$49,750	\$35,000	\$0	\$0
% Recovered	0.0%	0.0%	63.2%	68.9%	0.0%	100.0%	59.8%	0.0%	0.0%
Office Equipment									
Stolen	\$0	\$0	\$3,768	\$3,400	\$9,472	\$3,200	\$7,620	\$0	\$0
Recovered	\$0	\$0	\$1,200	\$0	\$1,028	\$0	\$6,070	\$0	\$0
% Recovered	0.0%	0.0%	31.8%	0.0%	10.9%	0.0%	79.7%	0.0%	0.0%
TV, VCR, Camera, Etc.									
Stolen	\$0	\$0	\$10,216	\$1,349	\$15,960	\$17,269	\$5,170	\$0	\$0
Recovered	\$0	\$0	\$700	\$0	\$700	\$1,069	\$0	\$0	\$0
% Recovered	0.0%	0.0%	6.9%	0.0%	4.4%	6.2%	0.0%	0.0%	0.0%
Firearm									
Stolen	\$0	\$0	\$0	\$3,876	\$0	\$1,300	\$1,029	\$0	\$0
Recovered	\$0	\$0	\$0	\$2,876	\$0	\$750	\$0	\$0	\$0
% Recovered	0.0%	0.0%	0.0%	74.2%	0.0%	57.7%	0.0%	0.0%	0.0%
Household Goods									
Stolen	\$580	\$0	\$50	\$0	\$250	\$0	\$740	\$0	\$0
Recovered	\$10	\$0	\$0	\$0	\$0	\$0	\$0	\$0	\$0
% Recovered	1.7%	0.0%	0.0%	0.0%	0.0%	0.0%	0.0%	0.0%	0.0%
Consumable Goods									
Stolen	\$0	\$0	\$269	\$1,291	\$96	\$435	\$2,106	\$22	\$0
Recovered	\$0	\$0	\$252	\$3	\$0	\$226	\$1,967	\$0	\$0
% Recovered	0.0%	0.0%	93.7%	0.2%	0.0%	52.0%	93.4%	0.0%	0.0%
Livestock									
Stolen	\$0	\$0	\$0	\$0	\$0	\$0	\$0	\$0	\$0
Recovered	\$0	\$0	\$0	\$0	\$0	\$0	\$0	\$0	\$0
% Recovered	0.0%	0.0%	0.0%	0.0%	0.0%	0.0%	0.0%	0.0%	0.0%
Misc.									
Stolen	\$11,205	\$0	\$29,362	\$18,076	\$49,986	\$68,646	\$44,680	\$126	\$100
Recovered	\$5,035	\$0	\$672	\$8,265	\$0	\$452	\$40,620	\$0	\$0
% Recovered	44.9%	0.0%	2.3%	45.7%	0.0%	0.7%	90.9%	0.0%	0.0%
TOTALS									
Stolen	\$137,769	\$0	\$226,918	\$46,478	\$82,749	\$182,138	\$122,395	\$148	\$100
Recovered	\$15,045	\$0	\$109,843	\$23,121	\$1,728	\$79,920	\$83,657	\$0	\$0
% Recovered	10.9%	0.0%	48.4%	49.7%	2.1%	43.9%	68.4%	0.0%	0.0%

Stolen/Recovered Property Report

October

Property Type	Eureka SO	Fallon PD	Henderson PD	Humboldt SO	Lander SO	Las Vegas Metro	Lincoln SO	Lovelock PD	Lyon SO
Currency									
Stolen	\$0	\$15	\$75,093	\$550	\$4,993	\$1,117,666	\$743	\$0	\$9,247
Recovered	\$0	\$0	\$116	\$550	\$0	\$2,400	\$52	\$0	\$15
% Recovered	0.0%	0.0%	0.2%	100.0%	0.0%	0.2%	7.0%	0.0%	0.2%
Jewelry									
Stolen	\$0	\$4,070	\$418,275	\$0	\$0	\$1,946,529	\$0	\$0	\$28,729
Recovered	\$0	\$0	\$4,950	\$0	\$0	\$5,023	\$0	\$0	\$5,300
% Recovered	0.0%	0.0%	1.2%	0.0%	0.0%	0.3%	0.0%	0.0%	18.4%
Clothing									
Stolen	\$0	\$0	\$48,714	\$0	\$0	\$265,687	\$0	\$0	\$150
Recovered	\$0	\$0	\$2,950	\$0	\$0	\$23,541	\$0	\$0	\$0
% Recovered	0.0%	0.0%	6.1%	0.0%	0.0%	8.9%	0.0%	0.0%	0.0%
Motor Vehicle									
Stolen	\$2,000	\$1,000	\$1,369,737	\$0	\$0	\$3,266,892	\$30,000	\$0	\$57,000
Recovered	\$0	\$0	\$1,275,298	\$0	\$0	\$1,208,007	\$30,000	\$0	\$16,900
% Recovered	0.0%	0.0%	93.1%	0.0%	0.0%	37.0%	100.0%	0.0%	29.6%
Office Equipment									
Stolen	\$0	\$150	\$93,161	\$0	\$0	\$525,927	\$0	\$0	\$500
Recovered	\$0	\$150	\$2,052	\$0	\$0	\$4,697	\$0	\$0	\$0
% Recovered	0.0%	100.0%	2.2%	0.0%	0.0%	0.9%	0.0%	0.0%	0.0%
TV, VCR, Camera, Etc.									
Stolen	\$0	\$2,354	\$149,693	\$100	\$0	\$1,058,350	\$150	\$0	\$8,855
Recovered	\$0	\$0	\$5,618	\$0	\$0	\$17,721	\$0	\$0	\$899
% Recovered	0.0%	0.0%	3.8%	0.0%	0.0%	1.7%	0.0%	0.0%	10.2%
Firearm									
Stolen	\$0	\$500	\$56,754	\$0	\$0	\$90,822	\$0	\$0	\$750
Recovered	\$0	\$0	\$300	\$0	\$0	\$1,650	\$0	\$0	\$550
% Recovered	0.0%	0.0%	0.5%	0.0%	0.0%	1.8%	0.0%	0.0%	73.3%
Household Goods									
Stolen	\$0	\$300	\$92,758	\$0	\$273	\$192,928	\$0	\$0	\$4,546
Recovered	\$0	\$0	\$89	\$0	\$0	\$412	\$0	\$0	\$66
% Recovered	0.0%	0.0%	0.1%	0.0%	0.0%	0.2%	0.0%	0.0%	1.5%
Consumable Goods									
Stolen	\$0	\$71	\$14,628	\$15	\$0	\$142,340	\$0	\$0	\$558
Recovered	\$0	\$0	\$12,894	\$0	\$0	\$3,133	\$0	\$0	\$79
% Recovered	0.0%	0.0%	88.1%	0.0%	0.0%	2.2%	0.0%	0.0%	14.2%
Livestock									
Stolen	\$0	\$0	\$0	\$0	\$0	\$600	\$0	\$0	\$100
Recovered	\$0	\$0	\$0	\$0	\$0	\$0	\$0	\$0	\$0
% Recovered	0.0%	0.0%	0.0%	0.0%	0.0%	0.0%	0.0%	0.0%	0.0%
Misc.									
Stolen	\$0	\$9,645	\$512,277	\$600	\$450	\$3,673,392	\$15	\$0	\$32,631
Recovered	\$0	\$0	\$23,465	\$0	\$0	\$27,994	\$0	\$0	\$5,750
% Recovered	0.0%	0.0%	4.6%	0.0%	0.0%	0.8%	0.0%	0.0%	17.6%
TOTALS									
Stolen	\$2,000	\$18,105	\$2,831,090	\$1,265	\$5,716	\$12,281,133	\$30,908	\$0	\$143,065
Recovered	\$0	\$150	\$1,327,732	\$550	\$0	\$1,294,578	\$30,052	\$0	\$29,559
% Recovered	0.0%	0.8%	46.9%	43.5%	0.0%	10.5%	97.2%	0.0%	20.7%

Stolen/Recovered Property Report

October 2006

Property Type	Mesquite PD	Mineral SO	NLVPD	Nye SO	Pershing SO	Reno PD	Sparks PD	Storey SO	Taxicab	TMCC PD
Currency										
Stolen	\$2,013	\$560	\$174,850	\$0	\$0	\$41,102	\$11,864	\$0	\$996	\$0
Recovered	\$0	\$0	\$732	\$0	\$0	\$412	\$893	\$0	\$0	\$0
% Recovered	0.0%	0.0%	0.4%	0.0%	0.0%	1.0%	7.5%	0.0%	0.0%	0.0%
Jewelry										
Stolen	\$0	\$0	\$164,969	\$0	\$0	\$92,321	\$63,672	\$0	\$0	\$0
Recovered	\$0	\$0	\$252	\$0	\$0	\$1,338	\$15,696	\$0	\$0	\$0
% Recovered	0.0%	0.0%	0.2%	0.0%	0.0%	1.4%	24.7%	0.0%	0.0%	0.0%
Clothing										
Stolen	\$22	\$0	\$24,085	\$0	\$0	\$12,909	\$13,862	\$0	\$50	\$0
Recovered	\$22	\$0	\$712	\$0	\$0	\$3,192	\$352	\$0	\$0	\$0
% Recovered	100.0%	0.0%	3.0%	0.0%	0.0%	24.7%	2.5%	0.0%	0.0%	0.0%
Motor Vehicle										
Stolen	\$9,000	\$0	\$3,035,386	\$0	\$0	\$925,399	\$517,470	\$0	\$0	\$0
Recovered	\$9,000	\$0	\$2,552,997	\$0	\$0	\$639,216	\$532,370	\$0	\$0	\$0
% Recovered	100.0%	0.0%	84.1%	0.0%	0.0%	69.1%	102.9%	0.0%	0.0%	0.0%
Office Equipment										
Stolen	\$100	\$0	\$326	\$0	\$0	\$66,784	\$18,503	\$0	\$0	\$0
Recovered	\$0	\$0	\$26	\$0	\$0	\$1,800	\$0	\$0	\$0	\$0
% Recovered	0.0%	0.0%	8.0%	0.0%	0.0%	2.7%	0.0%	0.0%	0.0%	0.0%
TV, VCR, Camera, Etc.										
Stolen	\$0	\$0	\$285,375	\$0	\$0	\$91,745	\$40,973	\$0	\$15,262	\$0
Recovered	\$0	\$0	\$8,792	\$0	\$0	\$1,140	\$866	\$0	\$0	\$0
% Recovered	0.0%	0.0%	3.1%	0.0%	0.0%	1.2%	2.1%	0.0%	0.0%	0.0%
Firearm										
Stolen	\$2,065	\$0	\$16,370	\$0	\$0	\$10,016	\$3,395	\$0	\$0	\$0
Recovered	\$0	\$0	\$0	\$0	\$0	\$0	\$235	\$0	\$0	\$0
% Recovered	0.0%	0.0%	0.0%	0.0%	0.0%	0.0%	6.9%	0.0%	0.0%	0.0%
Household Goods										
Stolen	\$0	\$0	\$28,981	\$0	\$0	\$11,539	\$67,521	\$0	\$0	\$0
Recovered	\$0	\$0	\$0	\$0	\$0	\$0	\$5,294	\$0	\$0	\$0
% Recovered	0.0%	0.0%	0.0%	0.0%	0.0%	0.0%	7.8%	0.0%	0.0%	0.0%
Consumable Goods										
Stolen	\$0	\$0	\$4,197	\$0	\$0	\$2,707	\$4,073	\$0	\$0	\$0
Recovered	\$0	\$0	\$683	\$0	\$0	\$1,341	\$657	\$0	\$0	\$0
% Recovered	0.0%	0.0%	16.3%	0.0%	0.0%	49.5%	16.1%	0.0%	0.0%	0.0%
Livestock										
Stolen	\$0	\$0	\$0	\$0	\$0	\$0	\$2,500	\$0	\$0	\$0
Recovered	\$0	\$0	\$0	\$0	\$0	\$0	\$0	\$0	\$0	\$0
% Recovered	0.0%	0.0%	0.0%	0.0%	0.0%	0.0%	0.0%	0.0%	0.0%	0.0%
Misc.										
Stolen	\$4,832	\$2,880	\$262,130	\$0	\$0	\$331,157	\$40,107	\$0	\$500	\$0
Recovered	\$274	\$0	\$3,068	\$0	\$0	\$19,357	\$14,335	\$0	\$0	\$0
% Recovered	5.7%	0.0%	1.2%	0.0%	0.0%	5.8%	35.7%	0.0%	0.0%	0.0%
TOTALS										
Stolen	\$18,032	\$3,440	\$3,996,669	\$0	\$0	\$1,585,679	\$783,940	\$0	\$16,808	\$0
Recovered	\$9,296	\$0	\$2,567,262	\$0	\$0	\$667,796	\$570,698	\$0	\$0	\$0
% Recovered	51.6%	0.0%	64.2%	0.0%	0.0%	42.1%	72.8%	0.0%	0.0%	0.0%

Stolen/Recovered Property Report

October

Property Type	UNLV PD	UNR PD	Washoe SO	Washoe Co Schl PD	Wendover PD	White Pine SO	Winnemucca PD	Yerington PD	Total By Property
Currency									
Stolen	\$3,671	\$2,969	\$6,386	\$0	\$1,600	\$10,330	\$16,754	\$85	\$1,596,609
Recovered	\$0	\$0	\$0	\$0	\$0	\$0	\$0	\$0	\$6,692
% Recovered	0.0%	0.0%	0.0%	0.0%	0.0%	0.0%	0.0%	0.0%	0.4%
Jewelry									
Stolen	\$6,000	\$250	\$82,455	\$0	\$0	\$0	\$600	\$0	\$2,877,864
Recovered	\$0	\$0	\$0	\$0	\$0	\$0	\$0	\$0	\$70,509
% Recovered	0.0%	0.0%	0.0%	0.0%	0.0%	0.0%	0.0%	0.0%	2.5%
Clothing									
Stolen	\$215	\$0	\$8,945	\$0	\$625	\$0	\$0	\$0	\$381,209
Recovered	\$0	\$0	\$0	\$0	\$0	\$0	\$0	\$0	\$33,681
% Recovered	0.0%	0.0%	0.0%	0.0%	0.0%	0.0%	0.0%	0.0%	8.8%
Motor Vehicle									
Stolen	\$21,200	\$23,000	\$86,800	\$0	\$4,500	\$45,000	\$0	\$0	\$9,690,369
Recovered	\$0	\$23,000	\$79,150	\$0	\$4,500	\$5,000	\$0	\$0	\$6,574,473
% Recovered	0.0%	100.0%	91.2%	0.0%	100.0%	11.1%	0.0%	0.0%	67.8%
Office Equipment									
Stolen	\$0	\$4,050	\$8,840	\$0	\$0	\$0	\$0	\$1,000	\$746,801
Recovered	\$0	\$2,050	\$0	\$0	\$0	\$0	\$0	\$0	\$19,073
% Recovered	0.0%	50.6%	0.0%	0.0%	0.0%	0.0%	0.0%	0.0%	2.6%
TV, VCR, Camera, Etc.									
Stolen	\$29,661	\$259	\$22,053	\$1,480	\$900	\$355	\$670	\$0	\$1,758,199
Recovered	\$0	\$0	\$0	\$350	\$0	\$0	\$0	\$0	\$37,855
% Recovered	0.0%	0.0%	0.0%	23.6%	0.0%	0.0%	0.0%	0.0%	2.2%
Firearm									
Stolen	\$0	\$0	\$3,050	\$0	\$0	\$0	\$2,150	\$0	\$192,077
Recovered	\$0	\$0	\$0	\$0	\$0	\$0	\$0	\$0	\$6,361
% Recovered	0.0%	0.0%	0.0%	0.0%	0.0%	0.0%	0.0%	0.0%	3.3%
Household Goods									
Stolen	\$0	\$0	\$20,650	\$0	\$0	\$0	\$0	\$0	\$421,116
Recovered	\$0	\$0	\$0	\$0	\$0	\$0	\$0	\$0	\$5,871
% Recovered	0.0%	0.0%	0.0%	0.0%	0.0%	0.0%	0.0%	0.0%	1.4%
Consumable Goods									
Stolen	\$115	\$0	\$320	\$0	\$82	\$12	\$51	\$0	\$173,388
Recovered	\$0	\$0	\$53	\$0	\$72	\$12	\$38	\$0	\$21,411
% Recovered	0.0%	0.0%	16.6%	0.0%	87.8%	100.0%	74.5%	0.0%	12.3%
Livestock									
Stolen	\$0	\$0	\$0	\$0	\$0	\$0	\$350	\$0	\$3,550
Recovered	\$0	\$0	\$0	\$0	\$0	\$0	\$350	\$0	\$350
% Recovered	0.0%	0.0%	0.0%	0.0%	0.0%	0.0%	100.0%	0.0%	9.9%
Misc.									
Stolen	\$1,538	\$6,486	\$99,960	\$4,177	\$630	\$4,506	\$145	\$644	\$5,210,883
Recovered	\$0	\$0	\$26,165	\$24	\$0	\$150	\$0	\$0	\$175,626
% Recovered	0.0%	0.0%	26.2%	0.6%	0.0%	3.3%	0.0%	0.0%	3.4%
TOTALS									
Stolen	\$62,400	\$37,014	\$339,459	\$5,657	\$8,337	\$60,203	\$20,720	\$1,729	\$23,052,065
Recovered	\$0	\$25,050	\$105,368	\$374	\$4,572	\$5,162	\$388	\$709	\$6,951,902
% Recovered	0.0%	67.7%	31.0%	6.6%	54.8%	8.6%	1.9%	0.0%	30.2%

Nevada--Assaults on Officers by Agency--UCR

October 2006

Agency	October 2006 Offenses	October 2006 Cleared	2006 YTD Offenses	2006 YTD Cleared	October 2005 Offenses	October 2005 Cleared	2005 YTD Offenses	2005 YTD Cleared
Boulder	0	0	0	0	0	0	5	5
Carlin PD	0	0	1	0	0	0	2	2
Carson SO	4	4	10	9	1	1	6	6
Churchill SO	0	0	12	11	0	0	3	3
ClrkSchIDst PD	0	0	10	9	0	0	0	0
Douglas SO	0	0	7	7	0	0	7	7
Elko PD	0	0	7	4	0	0	4	3
Elko SO	0	0	0	0	0	0	0	0
Esmeralda SO	0	0	0	0	0	0	0	0
Eureka SO	0	0	2	2	0	0	0	0
Fallon PD	0	0	1	1	0	0	0	0
Henderson PD	2	2	9	7	2	2	28	28
Highway Patrol	5	5	34	32	2	2	20	15
Humboldt SO	0	0	0	0	0	0	0	0
Lander SO	0	0	0	0	0	0	0	0
Lincoln SO	0	0	0	0	0	0	0	0
Lovelock PD	0	0	0	0	0	0	0	0
LV Fire Dept	0	0	0	0	0	0	0	0
LV Metro	36	36	340	325	35	33	240	235
Lyon SO	3	2	11	10	3	3	12	12
Mesquite PD	0	0	0	0	0	0	0	0
Mineral SO	0	0	0	0	0	0	0	0
NV Div Investigations	0	0	0	0	0	0	0	0
NLVPD	5	5	28	26	7	7	39	38
Nye SO	0	0	10	5	0	0	2	2
Pershing SO	0	0	0	0	0	0	0	0
Reno PD	1	1	17	17	1	1	14	14
Sparks PD	1	1	8	7	0	0	1	1
Storey SO	0	0	0	0	0	0	0	0
Taxicab Authority	0	0	0	0	0	0	0	0
TMCC PD	0	0	0	0	0	0	0	0
UNLV PD	0	0	0	0	0	0	1	1
UNR PD	0	0	0	0	0	0	1	1
Washoe SO	0	0	0	0	0	0	0	0
Washoe Co Schl PD	0	0	0	0	0	0	0	0
Wendover PD	0	0	4	4	1	1	5	5
White Pine SO	0	0	2	1	0	0	5	5
Winnemucca PD	0	0	2	2	0	0	2	2
Yerington PD	0	0	0	0	0	0	0	0
TOTALS	57	56	515	479	52	50	397	385

Nevada -- Assaults by Agency/Weapon/Assignment -- UCR

October 2006

Table 16

Agency	Total Assaults	Number Cleared	Firearm	Knife / Cutting Device	Other Danger. Weapon	Hands, Fists, Feet, Etc.	2-Officer Vehicle	1-Officer Vehicle- Alone	1-Officer Vehicle- Assisted	Det./Spec. Assign. - Alone	Det./Spec. Assign. - Assisted	Other- Alone	Other- Assisted
Boulder City PD	0	0	0	0	0	0	0	0	0	0	0	0	0
Carlin PD	0	0	0	0	0	0	0	0	0	0	0	0	0
Carson City SO	4	4	0	0	1	3	0	1	3	0	0	0	0
Churchill Co SO	0	0	0	0	0	0	0	0	0	0	0	0	0
Clark School Dist PD	0	0	0	0	0	0	0	0	0	0	0	0	0
Douglas Co SO	0	0	0	0	0	0	0	0	0	0	0	0	0
Elko PD	0	0	0	0	0	0	0	0	0	0	0	0	0
Elko Co SO	0	0	0	0	0	0	0	0	0	0	0	0	0
Esmeralda Co SO	0	0	0	0	0	0	0	0	0	0	0	0	0
Eureka Co SO	0	0	0	0	0	0	0	0	0	0	0	0	0
Fallon PD	0	0	0	0	0	0	0	0	0	0	0	0	0
Henderson PD	2	2	0	0	0	2	2	0	0	0	0	0	0
NV Highway Patrol	5	5	1	0	2	2	0	2	3	0	0	0	0
Humboldt Co SO	0	0	0	0	0	0	0	0	0	0	0	0	0
Lander Co SO	0	0	0	0	0	0	0	0	0	0	0	0	0
Lincoln Co SO	0	0	0	0	0	0	0	0	0	0	0	0	0
Lovelock PD	0	0	0	0	0	0	0	0	0	0	0	0	0
Las Vegas Fire Dept	0	0	0	0	0	0	0	0	0	0	0	0	0
Las Vegas Metro PD	36	36	0	1	5	30	23	2	3	2	5	1	0
Lyon Co SO	3	2	0	0	0	3	0	0	3	0	0	0	0
Mesquite PD	0	0	0	0	0	0	0	0	0	0	0	0	0
Mineral Co SO	0	0	0	0	0	0	0	0	0	0	0	0	0
NV Div of Investigations	0	0	0	0	0	0	0	0	0	0	0	0	0
North Las Vegas PD	5	5	0	0	3	2	2	0	2	0	1	0	0
Nye Co SO	0	0	0	0	0	0	0	0	0	0	0	0	0
Pershing Co SO	0	0	0	0	0	0	0	0	0	0	0	0	0
Reno PD	1	1	0	0	0	1	1	0	0	0	0	0	0
Sparks PD	1	1	0	0	0	1	0	1	0	0	0	0	0
Storey Co SO	0	0	0	0	0	0	0	0	0	0	0	0	0
Taxi Authority	0	0	0	0	0	0	0	0	0	0	0	0	0
TMCC PD	0	0	0	0	0	0	0	0	0	0	0	0	0
UNLV PD	0	0	0	0	0	0	0	0	0	0	0	0	0
UNR PD	0	0	0	0	0	0	0	0	0	0	0	0	0
Washoe Co SO	0	0	0	0	0	0	0	0	0	0	0	0	0
Washoe Co School PD	0	0	0	0	0	0	0	0	0	0	0	0	0
West Wendover PD	0	0	0	0	0	0	0	0	0	0	0	0	0
White Pine Co SO	0	0	0	0	0	0	0	0	0	0	0	0	0
Winnemucca PD	0	0	0	0	0	0	0	0	0	0	0	0	0
Yerington PD	0	0	0	0	0	0	0	0	0	0	0	0	0
TOTALS	57	56	1	1	11	44	28	6	14	2	6	1	0

28

Nevada -- Officer Assaults by Activity/Weapon/Assignment -- UCR

October 2006

Table 17

ACTIVITY TYPE	Total Assaults	Number Cleared	Firearm	Knife / Cutting Device	Other Danger. Weapon	Hands, Fists, Feet, Etc.	2-Officer Vehicle	1-Officer Vehicle-Alone	1-Officer Vehicle-Assisted	Det./Spec. Assign.-Alone	Det./Spec. Assign.-Assisted	Other-Alone	Other-Assisted
DOMESTIC / OTHER DISTURBANCE	19	19	0	0	1	18	16	2	1	0	0	0	0
BURGLARY IN PROGRESS	0	0	0	0	0	0	0	0	0	0	0	0	0
ROBBERY IN PROGRESS	0	0	0	0	0	0	0	0	0	0	0	0	0
ATTEMPTING OTHER ARREST	6	5	1	0	1	4	0	2	4	0	0	0	0
CIVIL DISORDER	0	0	0	0	0	0	0	0	0	0	0	0	0
HANDLING PRISONER	4	4	0	0	0	4	3	0	1	0	0	0	0
INVEST. SUSP. PERSONS / CIRCUM.	3	3	0	0	0	3	3	0	0	0	0	0	0
AMBUSH-NO WARNING	0	0	0	0	0	0	0	0	0	0	0	0	0
MENTALLY DERANGED	0	0	0	0	0	0	0	0	0	0	0	0	0
TRAFFIC PURSUITS / STOPS	13	13	0	0	8	5	6	2	4	0	1	0	0
ALL OTHER	12	12	0	1	1	10	0	0	4	2	5	1	0
TOTALS	57	56	1	1	11	44	28	6	14	2	6	1	0

29

Nevada--Assaults with Injury/without Injury--UCR

October 2006

Agency	Total Assaults by weapon	Total Assaults		Firearm		Cutting Instruments		Other Dangerous weapons		Hands, Fists, Feet, Etc.	
		With personal injury	Without personal injury	With personal injury	Without personal injury	With personal injury	Without personal injury	With personal injury	Without personal injury	With personal injury	Without personal injury
Boulder City PD	0	0	0	0	0	0	0	0	0	0	0
Carlin PD	0	0	0	0	0	0	0	0	0	0	0
Carson City SO	4	0	4	0	0	0	0	0	1	0	3
Churchill Co SO	0	0	0	0	0	0	0	0	0	0	0
Clark Co Schl Dist PD	0	0	0	0	0	0	0	0	0	0	0
Douglas Co SO	0	0	0	0	0	0	0	0	0	0	0
Elko Co SO	0	0	0	0	0	0	0	0	0	0	0
Elko PD	0	0	0	0	0	0	0	0	0	0	0
Esmeralda Co SO	0	0	0	0	0	0	0	0	0	0	0
Eureka Co SO	0	0	0	0	0	0	0	0	0	0	0
Fallon PD	0	0	0	0	0	0	0	0	0	0	0
Henderson PD	2	1	1	0	0	0	0	0	0	1	1
NV Highway Patrol	5	1	4	1	0	0	0	0	2	0	2
Humboldt Co SO	0	0	0	0	0	0	0	0	0	0	0
Lander Co SO	0	0	0	0	0	0	0	0	0	0	0
Las Vegas Metro PD	36	27	9	0	0	0	1	4	1	23	7
Lincoln Co SO	0	0	0	0	0	0	0	0	0	0	0
Lovelock PD	0	0	0	0	0	0	0	0	0	0	0
Lyon Co SO	3	0	3	0	0	0	0	0	0	0	3
Mesquite PD	0	0	0	0	0	0	0	0	0	0	0
Mineral Co SO	0	0	0	0	0	0	0	0	0	0	0
NV Div Investigations	0	0	0	0	0	0	0	0	0	0	0
North Las Vegas PD	5	1	4	0	0	0	0	0	4	1	0
Nye Co SO	0	0	0	0	0	0	0	0	0	0	0
Pershing Co SO	0	0	0	0	0	0	0	0	0	0	0
Reno PD	1	0	1	0	0	0	0	0	0	0	1
Sparks PD	1	0	1	0	0	0	0	0	0	0	1
Storey Co SO	0	0	0	0	0	0	0	0	0	0	0
Taxicab Authority	0	0	0	0	0	0	0	0	0	0	0
TMCC PD	0	0	0	0	0	0	0	0	0	0	0
UNLV PD	0	0	0	0	0	0	0	0	0	0	0
UNR PD	0	0	0	0	0	0	0	0	0	0	0
Washoe Co SO	0	0	0	0	0	0	0	0	0	0	0
Washoe Co School Dist.	0	0	0	0	0	0	0	0	0	0	0
West Wendover PD	0	0	0	0	0	0	0	0	0	0	0
White Pine Co SO	0	0	0	0	0	0	0	0	0	0	0
Winnemucca PD	0	0	0	0	0	0	0	0	0	0	0
Yerington PD	0	0	0	0	0	0	0	0	0	0	0
Totals	57	30	27	1	0	0	1	4	8	25	18

Nevada--Time of Assaults on Officers--UCR

October 2006

Agency	2:00 AM	4:00 AM	6:00 AM	8:00 AM	10:00 AM	12:00 AM	12:01-2:00 PM	2:00-4:00 PM	4:00-6:00 PM	6:00-8:00 PM	10:00 PM	10:00-12:00 PM
Boulder City PD	0	0	0	0	0	0	0	0	0	0	0	0
Carlin PD	0	0	0	0	0	0	0	0	0	0	0	0
Carson City SO	0	0	0	1	0	0	0	0	0	1	0	2
Churchill Co SO	0	0	0	0	0	0	0	0	0	0	0	0
Clark Co Schl Dist PD	0	0	0	0	0	0	0	0	0	0	0	0
Douglas Co SO	0	0	0	0	0	0	0	0	0	0	0	0
Elko Co SO	0	0	0	0	0	0	0	0	0	0	0	0
Elko PD	0	0	0	0	0	0	0	0	0	0	0	0
Esmeralda Co SO	0	0	0	0	0	0	0	0	0	0	0	0
Eureka Co SO	0	0	0	0	0	0	0	0	0	0	0	0
Fallon PD	0	0	0	0	0	0	0	0	0	0	0	0
Henderson PD	0	0	0	0	0	0	0	0	0	0	1	1
Highway Patrol	1	1	0	0	0	0	0	2	0	1	0	0
Humboldt Co SO	0	0	0	0	0	0	0	0	0	0	0	0
Lander Co SO	0	0	0	0	0	0	0	0	0	0	0	0
Las Vegas Metro PD	1	5	3	3	1	1	3	0	1	9	8	1
Lincoln Co SO	0	0	0	0	0	0	0	0	0	0	0	0
Lovelock PD	0	0	0	0	0	0	0	0	0	0	0	0
Lyon Co SO	0	0	0	0	0	1	1	0	0	0	1	0
Mesquite PD	0	0	0	0	0	0	0	0	0	0	0	0
Mineral Co SO	0	0	0	0	0	0	0	0	0	0	0	0
NV Div Investigations	0	0	0	0	0	0	0	0	0	0	0	0
North LV PD	2	0	0	1	0	0	0	0	0	1	0	1
Nye Co SO	0	0	0	0	0	0	0	0	0	0	0	0
Pershing Co SO	0	0	0	0	0	0	0	0	0	0	0	0
Reno PD	0	0	0	0	0	0	0	0	1	0	0	0
Sparks PD	1	0	0	0	0	0	0	0	0	0	0	0
Storey Co SO	0	0	0	0	0	0	0	0	0	0	0	0
Taxicab Authority	0	0	0	0	0	0	0	0	0	0	0	0
TMCC PD	0	0	0	0	0	0	0	0	0	0	0	0
UNLV PD	0	0	0	0	0	0	0	0	0	0	0	0
UNR PD	0	0	0	0	0	0	0	0	0	0	0	0
Washoe Co SO	0	0	0	0	0	0	0	0	0	0	0	0
Washoe Co Schl PD	0	0	0	0	0	0	0	0	0	0	0	0
West Wendover PD	0	0	0	0	0	0	0	0	0	0	0	0
White Pine Co SO	0	0	0	0	0	0	0	0	0	0	0	0
Winnemucca PD	0	0	0	0	0	0	0	0	0	0	0	0
Yerington PD	0	0	0	0	0	0	0	0	0	0	0	0
Totals	5	6	3	5	1	2	4	2	2	12	10	5

Nevada -- Division Of Investigations

Arrests for Narcotics Violations

OCTOBER 2006

		10-	13-																			Total	W	B	A	I																		
		<10	12	14	15	16	17	18	19	20	21	22	23	24	25-	29	30-	34	35-	39	40-	44	45-	49	50-	54	55-	59	60-	>64	Total	W	B	A	I									
SALES/MANUFACTURING VIOLATIONS																																												
Opium or cocaine and their derivatives (morphine, heroin, codeine)	M																							1	1					2					0					2				
Marijuana	M												1	1					1					3																				
	F												1					1					2					5																
Synthetic narcotics- Manufactured narcotics that can cause true drug addiction (demerol, meth)	M																																											
	F																																											
Other dangerous, non-narcotic, drugs (barbituates, benzderine)	M							1						1	1	1	2	1					7																					
	F												1	1					2					9																				
Sub-Total	M	0	0	0	0	0	0	1	0	0	0	0	2	2	1	2	3	1	0	0	0	0	0	0	0	0	0	0	0	12	0	0	0	0										
	F	0	0	0	0	0	0	0	0	0	0	1	0	1	0	1	1	0	0	0	0	0	0	0	0	0	0	0	4	16	0	0	0	0										
POSSESSION VIOLATIONS																																												
Opium or cocaine and their derivatives (morphine, heroin, codeine)	M																																											
	F																																											
Marijuana	M							1						1					1					4																				
	F							1						2					3					6					1															
Synthetic narcotics- Manufactured narcotics that can cause true drug addiction (demerol, meth)	M																																											
	F																																											
Other dangerous, non-narcotic, drugs (barbituates, benzderine)	M												3					1					4																					
	F												1					1					5																					
Sub-Total	M	0	0	0	0	0	0	1	0	0	1	0	0	4	0	0	2	0	0	0	0	0	0	0	0	0	0	0	8	0	0	0	0											
	F	0	0	0	0	0	0	1	0	0	0	0	0	2	1	0	0	0	0	0	0	0	0	0	0	0	0	4	11	0	0	0	1											
Total		0	0	0	0	0	0	3	0	0	1	1	2	9	2	3	6	1	0	0	0	0	0	0	0	0	0	28	27	0	0	0	1											

AGE, RACE AND SEX OF PERSONS CHARGED

18 Years of Age and over

October 2006

CLASSIFICATION OF OFFENSES	SEX															Total Over 18	RACE						
		18	19	20	21	22	23	24	25-29	30-34	35-39	40-44	45-49	50-54	55-59		60-64	over 65	White	Black	American Indian or Alaskan Native	Asian or Pacific Islander	
Murder and Nonnegligent Manlaughter	01a	Male		2				1	1	4	4	1	2	2			1	18					
		Female									1						1	14	5				
Manlaughter by Negligence	01b	Male															0						
		Female															0						
Forcible Rape	02	Male		3		1		1	1	4		1	1		1		14						
		Female															0	6	6	1	1		
Robbery	03	Male	14	6	13	5	3	11	7	16	15	6	13	4		1	114						
		Female		3	2					3	1	1					10	60	61	2	1		
Aggravated Assault (Return A-4a-d)	04	Male	11	6	4	3	8	7	11	25	23	24	25	11	9	4	2	173					
		Female	1				2	1	2	13	3	6	8	3	2	2	43	155	48	7	6		
Burglary--Breaking or Entering	05	Male	14	17	12	8	5	4	10	20	19	16	10	13	4	1	153						
		Female	2		2	1	1	1	2	5	5	6	9	1	1		36	144	35	3	7		
Larceny--Theft (except Motor Vehicle Theft)	06	Male	27	19	17	25	22	23	9	58	46	63	62	46	22	7	3	452					
		Female	13	15	15	9	10	9	9	36	24	29	11	16	7	2	2	208	492	138	8	22	
Motor Vehicle Theft	07	Male	12	5	4	10	4	6	5	18	17	16	11	4	1	1	114						
		Female	1		1			1	1	10	1	3	3				21	103	28	3	1		
Other Assaults (Return A-4e)	08	Male	22	39	33	51	42	48	44	193	169	168	107	102	52	26	10	14	1120				
		Female	10	15	16	21	13	22	16	84	52	42	53	48	11	4	2	3	412	1111	373	14	34
Arson	09	Male	1				1				1			1				4					
		Female																1	4	1			
Forgery & Counterfeiting	10	Male	1		2	1	3	1	3	5	5	5	3	4	4			37					
		Female	1			1	2			5	3	2		3	1		1	19	32	15	1	8	
Fraud	11	Male	1	3	4	7	13	6	4	24	35	24	20	21	11	4	1	2	180				
		Female	2	5	2	2	3	3	21	7	16	5	8	4	3	3		84	188	62	4	10	
Embezzlement	12	Male	1	1			2	1	1	2	1	3						12					
		Female	1	2	1		3		1	2	4	4	2	1	2	1		24	27	7		2	
Stolen Property; Buying, Receiving, Possessing	13	Male	5	3	4	5	6	6	6	27	20	13	9	7	4	2	3	120					
		Female	1	3		2	1	1	5	3	5	1	1					23	102	36	1	4	
Vandalism	14	Male	17	5	3	4	3	3	4	15	5	10	8	8	3	1		89					
		Female	2	2						3	1	2	3	3			1	2	19	87	13	4	4
Weapons; Carrying, Possessing, etc.	15	Male	15	19	10	15	6	6	15	29	17	23	12	8	5	1	1	1	183				
		Female	2	1	1	1	1				2	4	1					12	136	53	3	3	
Prostitution and Commercialized Vice	16	Male	1	4	6	2	7	2	3	17	15	12	9	7	7	3	1	2	98				
		Female	32	35	43	34	32	34	29	76	28	22	29	21	3	4		422	274	208	2	36	
Sex Offenses (except Forcible Rape and Prostitution)	17	Male	3	1	2	3	3	4	4	8	13	7	8	10	6	7	4	3	86	1			
		Female							1	3	1	1	1	2	2	1		12	81	12	1	3	
Drug Abuse Violations Grand Total	18	Male	48	57	51	53	41	32	42	150	119	98	96	60	36	14	5	2	904				
		Female	10	10	12	9	8	9	7	32	18	34	29	17	4	0	0	0	199	734	341	2	26
(1) Sale/Manufacturing Subtotal	180	Male	11	12	11	14	7	8	6	38	25	26	21	13	4	3	1	1	201				
		Female	3	3	0	1	2	2	0	6	3	6	4	4	0	0	0	0	34	143	88	1	3
Opium or Cocaine and Their Derivatives (Morphine, Heroin, Codeine)	a	Male	4	6	3	1	3	2	4	16	14	13	7	4	2	3	1	1	84				
		Female	1	2		1	1			2	1	3	2	1				14	36	61		1	
Marijuana	b	Male	3	4	4	4	2		2	13	6	3	1	4				46					
		Female		1			1			2		2		1				7	28	25			
Synthetic Narcotics--Manufactured Narcotics Which Cause True Drug Addiction (Demerol, Methadone)	c	Male	1			3		5		5	1	5	6	1	2			29					
		Female	1				1			2				1				5	32			2	
Other Dangerous Non-Narcotic Drugs (Barbiturates, Benzedrine)	d	Male	3	2	4	6	2	1		4	4	5	7	4				42					
		Female	1				1			2	1	2	1					8	47	2	1		

CLASSIFICATION OF OFFENSES

		SEX																Total Over 18	RACE				
			18	19	20	21	22	23	24	25-29	30-34	35-39	40-44	45-49	50-54	55-59	60-64		over 65	White	Black	American Indian or Alaskan Native	Asian or Pacific Islander
(2) Possession - Subtotal	185	Male	37	45	40	39	34	24	36	112	94	72	75	47	32	11	4	1	703	591	253	1	23
		Female	7	7	12	8	6	7	7	26	15	28	25	13	4	0	0	0	165				
Opium or Cocaine and Their Derivatives (Morphine, Heroin, Codeine)	e	Male	6	6	4	8	1	3	6	14	15	28	21	16	15	5		1	149				
		Female	1	1				1	2	3	3	7	8	4	3				33	98	82	1	1
Marijuana	f	Male	26	35	26	23	21	17	21	65	29	20	30	11	9	2	3		338				
		Female	5	5	9	6	2	4	1	13	5	12	7	4	1				74	266	137		9
Synthetic Narcotics-Manufactured Narcotics Which Cause True Drug Addiction (Demerol, Methad)	g	Male	5	2	9	6	12	4	9	29	46	22	23	20	8	4	1		200				
		Female	1	1	2	1	4	2	4	9	6	8	9	5					52	210	30		12
Other Dangerous Non-Narcotic Drugs (Barbiturates, Benzedrine)	h	Male		2	1	2				4	4	2	1						16				
		Female			1	1				1	1	1	1						6	17	4		1
Gambling Total	19	Male	1	0	0	0	0	0	0	0	0	0	0	0	0	0	0	0	1				
		Female	3	2	5	0	0	0	0	0	0	0	0	0	0	0	0	0	10	8	3	0	0
Bookmaking (Horses and Sports Book)	a	Male																	0				
		Female																	0				
Numbers and Lottery	b	Male																	0				
		Female																	0				
All Other Gambling	c	Male	1																1				
		Female	3	2	5														10	8	3		
Offenses Against Family and Children	20	Male	7	6	3	4	2	3		15	8	8	9	4	1	1	1		72				
		Female	3	5	1	1	4	5	2	8	7	4	1	2	2				45	100	10		7
Driving Under the Influence	21	Male	16	16	23	43	31	33	29	160	99	92	74	67	60	25	14	6	788				
		Female	2		7	10	10	5	7	36	26	22	21	18	14	8	3	3	192	892	58	14	15
Liquor Laws	22	Male	48	58	47	7	13	7	8	39	35	42	60	51	32	11	10	4	472				
		Female	17	11	15	4	3		1	8	3	7	3	7	2	1		2	84	436	91	20	9
Drunkenness	23	Male		1					1				1					1	5				
		Female				1	1						1						3	6		2	
Disorderly Conduct	24	Male	3	4	2	5	4	10	9	11	14	15	16	23	10	2		1	129				
		Female			1	3	2		1	5	3	1	4	4	2	2			28	123	27	4	3
Vagrancy	25	Male		1	2	2	2	4	5	10	8	16	21	29	12	10	5	1	128				
		Female			2	2	1	1	1	5	2	2		7	2	3			25	101	42	4	6
All Other Offenses (except Traffic) Total	26	Male	97	112	114	141	140	112	115	559	461	484	520	437	281	105	59	32	3769				
		Female	26	60	50	70	59	48	59	206	123	162	149	86	49	12	6	5	1170	3449	1337	59	93
Suspicion	27	Male																0					
		Female																	0				
GRAND TOTAL			486	553	539	564	516	471	480	1975	1466	1524	1429	1170	669	269	135	92	12338	8866	3010	159	301

Department of Motor Vehicles and Public Safety
 808 west Nye Lane
 Carson City NV 89703

Uniform Crime Reporting

AGE, SEX, AND RACE OF PERSONS CHARGED

October 2006

18 Years of age and under

(Count all Offences even if the Arrest is based on only one charge)

CLASSIFICATION OF OFFENSES	SEX	AGE							Total Under 18	RACE				
		Under 10	10-12	13-14	15	16	17	White		Black	American Indian or Alaskan Native	Asian or Pacific Islander		
Murder and Nonnegligent Manslaughter	01a	Male							0					
		Female							0					
Manslaughter by Negligence	01b	Male							0					
		Female							0					
Forcible Rape	02	Male						2	2					
		Female							0	2				
Robbery	03	Male		1	1	2	6	7	17					
		Female			1				1	5	13			
Aggravated Assault (Return A-4a-d)	04	Male		2	5	4	4	3	18					
		Female		2			1		3	16	5			
Burglary--Breaking or Entering	05	Male		1	7	9	10	10	37					
		Female			5		1		6	28	12			2
Larceny--Theft (except Motor Vehicle Theft)	06	Male	1	17	43	28	22	30	141					
		Female	1	10	27	19	15	19	91	168	58			6
Motor Vehicle Theft	07	Male			1		1	1	3					
		Female				2	1	1	4	7				
Other Assaults (Return A-4e)	08	Male	4	11	28	27	11	23	104					
		Female		3	14	7	8	7	39	104	38			1
Arson	09	Male	1	16	18	7	12	1	55					
		Female		6	3	5	1		15	33	34			3
Forgery & Counterfeiting	10	Male				2			2					
		Female							0		2			
Fraud	11	Male			4	1		1	6					
		Female				1			1	6	1			
Embezzlement	12	Male							0					
		Female							0					
Stolen Property; Buying, Receiving, Possessing	13	Male		2	2	1	4	2	11					
		Female		1	3	1	2		7	13	5			
Vandalism	14	Male	1	5	26	15	15	14	76					
		Female		3	3	2	1	1	10	72	8	3		3
Weapons; Carrying, Possessing, etc.	15	Male	2	7	8	6	10	5	38					
		Female			1	1	1	1	4	35	4			3
Prostitution and Commercialized Vice	16	Male							0					
		Female						1	1		1			
Sex Offenses (except Forcible Rape and Prostitution)	17	Male		5	5			1	11					
		Female							0	10	1			
Drug Abuse Violations		Male	0	3	25	19	22	29	98					
Grand Total	18	Female	0	1	7	3	11	6	28	108	15	0		3
(1) Sale/Manufacturing Subtotal	180	Male	0	1	6	2	7	5	21					
		Female	0	0	0	1	4	0	5	22	4	0		0
Opium or Cocaine and Their Derivatives (Morphine, Heroin, Codeine)	a	Male					1	1	2					
		Female					1		1	1	2			
Marijuana	b	Male			6	1	5	4	16					
		Female					2		2	16	2			
Synthetic Narcotics-Manufactured Narc Cause True Drug Addiction (Der	c	Male							0					
		Female					1		1	1				
Other Dangerous Non-Narcotic Drugs (Barbiturates, Benzadrine	d	Male		1		1	1		3					
		Female				1			1	4				
(2) Possession - Subtotal	185	Male	0	2	19	17	15	24	77					
		Female	0	1	7	2	7	6	23	86	11	0		3
Opium or Cocaine and Their Derivatives (Morphine, Heroin, Codeine)	e	Male			1				2					
		Female					1		1	3				
Marijuana	f	Male		2	17	16	12	23	70					
		Female		1	7	2	6	5	21	79	11			1
Synthetic Narcotics-Manufactured Narc Cause True Drug Addiction (Der	g	Male			1	1	1	1	4					
		Female						1	1	3				2
Other Dangerous Non-Narcotic Drugs (Barbiturates, Benzadrine	h	Male					1		1					
		Female							0	1				

CLASSIFICATION OF OFFENSES									RACE			
									White	Black	American Indian or Alaskan Native	Asian or Pacific Islander
SEX	Under 10	10-12	13-14	15	16	17	Total Under 18					
Gambling Total 19	Male	0	0	0	0	0	0	0	0	0	0	0
	Female	0	0	0	0	0	0	0	0	0	0	0
Bookmaking (Horses and Sports Book) a	Male							0				
	Female							0				
Numbers and Lottery b	Male							0				
	Female							0				
All Other Gambling c	Male							0				
	Female							0				
Offenses Against Family and Children 20	Male							0				
	Female				1	1		2	2			
Driving Under the Influence 21	Male						6	8				
	Female			1	4	10	7	22	29	1		
Liquor Laws 22	Male			11	13	30	37	91				
	Female			3	11	16	17	47	116	16	5	1
Drunkenness 23	Male			1	1	4	6	12				
	Female				3	1	3	7	19			
Disorderly Conduct 24	Male	1	9	37	10	14	4	75				
	Female		7	9	7	7	4	34	67	41		1
Vagrancy 25	Male							0				
	Female							0				
All Other Offenses (except Traffic) Total 26	Male	2	15	44	55	57	66	239				
	Female		1	18	24	24	6	73	248	49	8	7
Suspicion 27	Male				1	1		2				
	Female				1			1	3			
Curfew and Loitering Law Violati 28	Male	1	5	17	24	27	42	116				
	Female		5	14	14	18	15	66	152	25	1	3
Runaway 29	Male		2	11	16	15	3	47				
	Female		3	19	13	16	16	67	100	9	2	3
GRAND TOTAL		14	143	422	360	402	397	1738	1343	338	19	36

Department of Motor Vehicles and Public Safety
808 West Nye Lane
Carson City NV 89703

Uniform Crime Reporting

Date

Disposition of Juveniles

TOTAL

1. Handled within Department and released.
2. Referred to Juvenile court.
3. Referred to welfare agency.
4. Released to other police agency.
5. Referred to criminal or adult court.



Nevada UCR Footnotes / Exceptions

October 2006

Table 1

--Nevada figures are annualized projections.

--"Assault" does not include simple assaults to allow direct comparison between the Nevada rate and the National rate for this Index offense. See Table 8 for a count of all assaults.

Table 2

--The LV Fire Department reports "Arson" offenses for the City of Las Vegas. The population figure for this agency represents jurisdiction and is not added to the county total. Similarly, the School District Police Departments in Clark and Washoe Counties are not added to county population estimates as they represent persons served (student enrollment plus staff.)

--Assault data in this table includes ALL assaults (aggravated and simple) reported for the current month.

--County crime rates are calculated following subtraction of populations of jurisdictions failing to report.

Table 3

-- In the "Nevada vs National Index Crime and Clearance Rates" sections, the "Assaults" numbers do not include simple assaults following FBI guidelines. Therefore, they may be compared directly to National rates.

-- National crime rate figures are the latest available for comparative use (2005). Nevada figures are annualized projections.

Table 13

--At various times, property values recovered will exceed values stolen for the current reporting period.

General Notes:

■ The following agencies did not submit reports for this month:

Lovelock Police Department
Nye County Sheriff
Pershing County Sheriff
Story County Sheriff

-- Any late reports not submitted in time for this publication will be incorporated in to the year-to-date totals in subsequent reports.