

UNIFORM CRIME REPORTING PROGRAM
UCR STATISTICAL DATA VERIFICATION FORM

As an agency administrator or designee for the _____, I have
(Name of Agency)
reviewed the UCR monthly statistics for **September 2006** which includes all UCR data
submitted year to date. Based upon my or my designee's review and validation of same, I find
that:

All data contained in the report for my agency is accurate and complete and may be
released and made part of UCR publications for future distribution to the public and other
interested UCR data subscribers.

Data contained in the report is inaccurate or incomplete and may not be published or
released at this time. (If this choice is selected, please provide the reason in the space
provided below.)

Reason: _____

The corrected data will be supplied to the UCR Program by: _____.
(Date)

This document must be signed and mailed to the Uniform Crime Reporting Program, 808 W.
Nye Lane, Carson City, Nevada 89703 or faxed to (775) 684-6266 by **March 12, 2007**.

Signature of Agency Administrator (or designee)

Name/Title of Agency Administrator (print or type)

Agency's Name/Location

Date

Disclaimer: The following information is preliminary and cannot be certified until it is published in the annual report, Crime and Justice in Nevada, which will be available after July 1, 2007.

Department of Public Safety
Records and Identification Bureau

Monthly Report



**September
2006**

**Phil Galeoto, Director
Department of Public Safety**

**Capt Philip K. O'Neill, Division Chief
Records and Identification Bureau**

**Josh Porter, Statistician II
Pam Sebring, Administrative Assistant IV
Sherri Sharp, Administrative Assistant II**

**Prepared by:
Records and Identification Bureau
Uniform Crime Reporting
808 W. Nye Lane
Carson City, Nevada 89703
(775) 684-6262**

Nevada UCR Definitions / Explanations

Uniform Crime Reporting Program

The UCR program is a nationwide, cooperative, statistical effort by over 17,000 city, county and state law enforcement agencies that voluntarily report data on crimes brought to their attention. Law enforcement agencies active in the national program represent 95% of the total population of the United States. While the program's primary objective is to generate a reliable set of crime statistics for use in law enforcement administration, operation and management, its data has over the years become one of the country's leading social indicators.

In Nevada, 39 agencies are currently reporting UCR data to the statewide program representing nearly 99% of its population. Rather than submitting directly to the FBI, local agencies must submit crime data to the state UCR Repository, which compiles, analyzes and submits copies of the reports to the FBI. The Nevada UCR Program prides itself on its responsiveness to local contributing agencies that previously received limited feedback for their efforts. The Nevada program is also responsible for producing and distributing periodic reports of the information contained in its database. As its database has grown, the program's utility has become even more apparent.

Eight offenses serve as an index for gauging fluctuations in overall volumes and rates of crime. Known collectively as the " Crime Index, " these offenses include *the violent crimes of murder, rape, robbery and assault and the property crimes of burglary, larceny, motor vehicle theft and arson*. These offenses were selected as a grouped measuring device because they represent the most common crime problems. They are all serious crimes; either by their very nature or due to the volume and frequency with which they occur.

Index Crimes Definitions

Murder and Non-negligent Manslaughter

Murder and non negligent manslaughter, as defined in the Uniform Crime Reporting Program, is the willful (non-negligent) killing of a human being by another.

The classification of this offense, as for all other Crime Index offenses, is based solely on police investigation as opposed to the determination of a court, medical examiner, coroner, jury or other judicial entity. Not included in the count for this offense classification are deaths caused by negligence, suicide or accident, justifiable homicides and attempts to murder or assaults to murder. These are scored as aggravated assaults.

Nevada UCR Definitions / Explanations

Forcible Rape

Forcible rape, as defined in the program, is the carnal knowledge of a female forcibly and against her will. Assaults or attempts to commit rape by force or threat of force are also included; however, statutory rape (without force) and other sex offenses are excluded.

Robbery

Robbery is the taking or attempting to take anything of value from the care, custody or control of a person or persons by force or threat of force or violence and/or by putting the victim in fear.

Aggravated Assault

Aggravated assault is an unlawful attack by one person upon another for the purpose of inflicting severe or aggravated bodily injury. This type of assault is usually accompanied by the use of a weapon or by means likely to produce death or great bodily harm. Attempts are included since it is not necessary that an injury result when a gun, knife or other weapon is used which could and probably would result in serious personal injury if the crime were successfully completed

Burglary

The Uniform Crime Reporting Program defines burglary as the unlawful entry of a structure to commit a felony or theft. The use of force to gain entry is not required to classify an offense as burglary. Burglary in this program is categorized into three sub classifications: forcible entry, unlawful entry where no force is used and attempted forcible entry.

Larceny-Theft

Larceny-theft is the unlawful taking, carrying, leading, or riding away of property from the possession or constructive possession of another. It includes crimes such as shoplifting, pocket picking, purse-snatching, thefts from motor vehicles, thefts of motor vehicle parts and accessories, and bicycle thefts, etc., in which no use of force, violence, or fraud occurs. In the UCR Program, this crime category does not include embezzlement, "con" games, forgery, and worthless checks. Motor vehicle theft is also excluded from this category inasmuch as it is a separate Crime Index offense.

Motor Vehicle Theft

Defined as the theft or attempted theft of a motor vehicle, this offense category includes the stealing of automobiles, trucks, buses, motorcycles, motor scooters, snowmobiles, etc. The definition excludes the taking of a motor vehicle for temporary use by those persons having lawful access.

Nevada UCR Definitions / Explanations

Arson

Arson is defined by the Uniform Crime Reporting Program as any willful or malicious burning or attempt to burn, with or without intent to defraud, a dwelling house, public building, a motor vehicle or aircraft, personal property of another, etc. Only fires determined through investigation to have been willfully or maliciously set are classified as arsons. Fires of suspicious or unknown origins are excluded.

Population Estimates

State, county and incorporated city population estimates are prepared and reviewed prior to the end of each calendar year for certification by the governor by March 1. The Nevada Department of Taxation and Nevada State Demographer, Bureau of Business and Economic Research, College of Business Administration, University of Nevada, Reno, prepares these estimates.

Crime Rates

Crime rates involve the number of Index Crimes per unit of population, usually per 100,000 persons. Because Nevada has such a low population, a rate per 1,000 persons is used to reflect a more realistic volume. No attempt is made to incorporate transient populations or other factors that contribute to the ratio and types of crime in given areas. Any effort to make comparisons of crime rates between areas should be tempered by these population and environmental variables.

Crime rates are one of the most meaningful statistical elements. Computation of crime rates per 1,000 population is achieved by dividing the community's population by 1,000, then dividing the number of offenses in each class by that number. The answer is the number of offenses per 1,000 population and is the crime rate for that particular offense. In Table 2, the County Total Crime Rate is computed after subtracting the population figure for all non-reporting agencies for the current month.

The index offense "Aggravated Assault" is an item of special interest to users of Nevada's UCR report. In Tables 1 & 3, where Nevada and National crime rates are compared, "simple assaults" are subtracted from the total of all assaults following FBI UCR rules, thus allowing for direct comparison. However, total assaults (simple and aggravated) are also presented in the Nevada report. This is because the Nevada UCR staff believes this figure is an important indicator of risk for citizens and it presents a more balanced picture of this portion of the crime index to law enforcement personnel.

The Federal Bureau of Investigation, Uniform Crime Reporting Section, publishes national rates.

Clearance Rates

The percentage of crimes cleared is obtained by dividing the number of offenses cleared by the number of offenses known. This number is then multiplied by 100.

Nevada--Statewide Summary--UCR Index Crimes

September 2006

Offense	Crimes this Month	# Cleared this Month	% Cleared this Month	Crimes this YTD	# Cleared this YTD	% Cleared this YTD	September Crimes 2005	September Cleared 2005	% September Cleared 2005	2006 NV Rate / 1,000 (Proj) *	2005 NV Rate / 1,000	2005 Natl. Rate / 1,000
Murder	24	15	63	159	108	68	15	12	80	0.08	0.08	0.06
Rape	85	14	16	828	214	26	79	20	25	0.44	0.40	0.32
Robbery	570	113	20	5,081	909	18	411	72	18	2.69	1.87	1.41
Assault *	936	406	43	7,765	3,132	40	910	415	46	4.11	3.46	2.91
Burglary	2,050	157	8	18,438	1,629	9	1,939	395	20	9.76	9.31	7.27
Larceny	4,055	688	17	37,271	6,794	18	4,263	889	21	19.73	20.64	22.86
MV Theft	1,882	181	10	20,616	2,004	10	2,377	250	11	10.91	10.69	4.17
Arson	67	16	24	638	139	22	68	9	13	0.34	0.31	0.27
Total	9,669	1,590	16	90,796	14,929	16	10,062	2,062	20	48.06	46.77	39.27

* The projected Crime Rate for Assaults is computed after subtracting Simple Assaults from the total for all Assaults following FBI guidelines. Therefore, this rate may be compared directly to the National Rate. See Table 3 and the "Footnotes/Exceptions page for further information.

Nevada UCR - - Monthly Crime/ Clearance Summary - - All Crimes

Contributing Agency	Est. Pop	Murder		Rape		Robbery		Assault		Burglary		Larceny		MV Theft		Arson		Total Crimes	Crime Rate	Clearances	Clearance Rate
Carson County																		September 2006			
Carson SO	57,104	0	0	2	0	0	0	86	43	25	6	75	16	11	2	0	0	199	3.48	67	33.7%
County Total	57,104	0	0	2	0	0	0	86	43	25	6	75	16	11	2	0	0	199	3.48	67	33.7%
Churchill County																					
Churchill SO	18,246	0	0	2	2	0	0	29	27	7	1	16	5	1	0	1	1	56	3.07	36	64.3%
Fallon PD	8,339	0	0	0	0	0	0	19	13	4	0	27	4	0	0	0	0	50	6.00	17	34.0%
County Total	26,585	0	0	2	2	0	0	48	40	11	1	43	9	1	0	1	1	106	3.99	53	50.0%
Clark County																					
Boulder PD	15,203	1	0	0	0	1	0	5	5	7	0	11	0	1	0	0	0	26	1.71	5	19.2%
Clark Co. Sc	312,995	0	0	0	0	6	2	79	49	23	4	62	8	2	0	9	5	181	0.58	68	37.6%
Henderson	241,134	0	0	7	0	0	0	236	130	148	21	238	43	113	2	10	5	752	3.12	201	26.7%
LV Metro PD	1,505,401	18	10	58	5	439	87	2,409	967	1,276	65	2,122	370	1,352	138	23	0	7,697	5.11	1,642	21.3%
LV Fire Dept*																6	2	6	N/A	2	33.3%
Mesquite	16,423	0	0	0	0	1	0	12	11	1	0	21	7	0	0	0	0	35	2.13	18	51.4%
North Las Vegas	18,219	2	2	4	1	47	7	339	200	188	13	290	50	164	8	4	0	1,038	56.97	281	27.1%
Taxicab Authority		0	0	0	0	5	0	12	3	0	0	34	0	1	0	0	0	52	0.00	3	5.8%
UNLV PD*	26,345	0	0	0	0	0	0	6	4	8	0	37	0	2	0	0	0	53	2.01	4	7.5%
County Total	1,796,380	21	12	69	6	499	96	3,098	1,369	1,651	103	2,815	478	1,635	148	52	12	9,840	5.48	2,224	22.6%
Douglas County																					
Douglas SO	50,108	1	0	2	2	0	0	39	23	8	3	55	6	3	3	0	0	108	2.16	37	34.3%
County Total	50,108	1	0	2	2	0	0	39	23	8	3	55	6	3	3	0	0	108	2.16	37	34.3%

*Population figure not included in county total
Table 2

5
Assault data includes ALL assaults (aggravated and simple).

Nevada UCR - - Monthly Crime/ Clearance Summary - - All Crimes

Contributing Agency	Est. Pop	Murder		Rape		Robbery		Assault		Burglary		Larceny		MV Theft		Arson		Total Crimes	Crime Rate	Clearances	Clearance Rate
Elko County																		September 2006			
Elko SO	22,627	0	0	0	0	0	0	14	8	7	2	12	1	1	0	0	0	34	1.50	11	32.4%
Carlin PD	2,261	0	0	0	0	0	0	1	0	1	0	1	0	2	0	0	0	5	2.21	0	0.0%
Elko PD	17,850	0	0	0	0	1	0	24	19	10	2	29	3	4	0	0	0	68	3.81	24	35.3%
WestWendover	4,848	0	0	2	1	0	0	22	20	1	0	11	3	1	1	1	1	38	7.84	26	68.4%
County Total	47,586	0	0	2	1	1	0	61	47	19	4	53	7	8	1	1	1	145	3.05	61	42.1%
Esmeralda County																					
Esmeralda SO	1,276	0	0	0	0	0	0	2	2	0	0	0	0	0	0	0	0	2	1.57	2	100.0%
County Total	1,276	0	0	0	0	0	0	2	2	0	0	0	0	0	0	0	0	2	1.57	2	100.0%
Eureka County																					
Eureka SO	1,485	0	0	0	0	0	0	1	1	0	0	0	0	1	0	0	0	2	1.35	1	50.0%
County Total	1,485	0	0	0	0	0	0	1	1	0	0	0	0	1	0	0	0	2	1.35	1	50.0%
Humboldt County																					
Humboldt SO	9,892	0	0	0	0	0	0	5	5	0	0	0	0	0	0	0	0	5	0.51	5	100.0%
Winnemucca	7,401	0	0	0	0	1	0	3	3	1	1	6	1	1	0	1	1	13	1.76	6	
County Total	17,293	0	0	0	0	1	0	8	8	1	1	6	1	1	0	1	1	18	1.04	11	61.1%

*Population figure not included in county total
Table 2

6
Assault data includes ALL assaults (aggravated and simple).

Nevada UCR - - Monthly Crime/ Clearance Summary - - All Crimes

Contributing Agency	Est. Pop	Murder		Rape		Robbery		Assault		Burglary		Larceny		MV Theft		Arson		Total Crimes	Crime Rate	Clearances	Clearance Rate
September 2006																					
Lander County																					
Lander SO	5,509	0	0	0	0	0	0	12	9	1	1	2	2	0	0	0	0	15	2.72	12	80.0%
County Total	5,509	0	0	0	0	0	0	12	9	1	1	2	2	0	0	0	0	15	2.72	12	80.0%
Lincoln County																					
Lincoln SO	3,886	0	0	0	0	0	0	2	0	0	1	2	1	0	0	1	0	5	1.29	2	40.0%
County Total	3,886	0	0	0	0	0	0	2	0	0	1	2	1	0	0	1	0	5	1.29	2	40.0%
Lyon County																					
Lyon SO	45,880	0	0	0	0	0	0	60	21	15	0	33	1	9	2	3	1	120	2.62	25	20.8%
Yerington PI	2,980	0	0	0	0	0	0	4	4	5	3	3	2	0	0	0	0	12	4.03	9	75.0%
County Total	48,860	0	0	0	0	0	0	64	25	20	3	36	3	9	2	3	1	132	2.70	34	25.8%
Mineral County																					
Mineral SO	4,629	0	0	0	0	0	0	5	5	2	2	1	0	0	0	0	0	8	1.73	7	87.5%
County Total	4,629	0	0	0	0	0	0	5	5	2	2	1	0	0	0	0	0	8	1.73	7	87.5%
Nye County																					
Nye SO	41,302	0	0	2	1	0	0	60	60	21	3	40	15	13	4	1	0	137	3.32	83	60.6%
County Total	41,302	0	0	2	1	0	0	60	60	21	3	40	15	13	4	1	0	137	3.32	83	60.6%

*Population figure not included in county total
Table 2

7
Assault data includes ALL assaults (aggravated and simple).

Nevada UCR - - Monthly Crime/ Clearance Summary - - All Crimes

Contributing Agency	Est. Pop	Murder		Rape		Robbery		Assault		Burglary		Larceny		MV Theft		Arson		Total Crimes	Crime Rate	Clearances	Clearance Rate
Pershing County																		September 2006			
Pershing SO	4,373	0	0	0	0	0	0	0	0	0	0	0	0	0	0	0	0	0	0.00	0	0.0%
Lovelock PD	2,363	0	0	0	0	0	0	5	5	2	3	1	1	0	0	0	0	8	3.39	9	112.5%
County Total	6,736	0	0	0	0	0	0	5	5	2	3	1	1	0	0	0	0	8	1.19	9	112.5%
Storey County																					
Storey	4,012	0	0	0	0	0	0	6	4	1	0	1	0	0	0	0	0	8	1.99	4	50.0%
County Total	4,012	0	0	0	0	0	0	6	4	1	0	1	0	0	0	0	0	8	1.99	4	50.0%
Washoe County																					
Washoe SO	101,491	0	0	0	0	1	0	94	44	51	2	71	6	22	1	1	0	240	2.36	53	22.1%
Reno PD	206,735	1	1	3	2	57	15	371	206	167	15	615	112	134	17	1	0	1,349	6.53	368	27.3%
Sparks PD	85,618	1	2	1	0	10	1	111	87	65	8	196	22	43	3	3	0	430	5.02	123	28.6%
UNR PD*	16,671	0	0	0	0	0	0	3	1	1	0	18	1	0	0	0	0	22	1.32	2	9.1%
Washoe Co :	65,000	0	0	0	0	1	1	6	6	3	1	18	5	0	0	1	0	29	0.45	13	44.8%
TMCC PD*	13,563	0	0	0	0	0	0	0	0	0	0	1	0	0	0	0	0	1	0.07	0	0.0%
County Total	393,844	2	3	4	2	69	17	585	344	287	26	919	146	199	21	6	0	2,071	5.26	559	27.0%
White Pine County																					
White Pine S	9,275	0	0	2	0	0	0	5	4	1	0	6	3	1	0	1	0	16	1.73	7	43.8%
County Total	9,275	0	0	2	0	0	0	5	4	1	0	6	3	1	0	1	0	16	1.73	7	43.8%
Grand Total	2,515,870	24	15	85	14	570	113	4,087	1,989	2,050	157	4,055	688	1,882	181	67	16	12,820	5.10	3,173	24.8%

*Population figure not included in county total
Table 2

Nevada UCR - - Monthly Crimes/Clearances Summary - - Index Crimes

September 2006

Est. Pop	Murder		Rape		Robbery		Assault		Burglary		Larceny		MV Theft		Arson		Total Crimes	Crime Rate	Total Clear	Clearance Rate	
Statewide Totals																					
(Crimes/Clearances)	2,518,870	24	15	85	14	570	113	936	406	2050	157	4055	688	1882	181	67	16	9669	3.84	1590	16.44

Nevada (Projected 2006) vs National (2005) Index Crime Rates

(per 1,000 population)

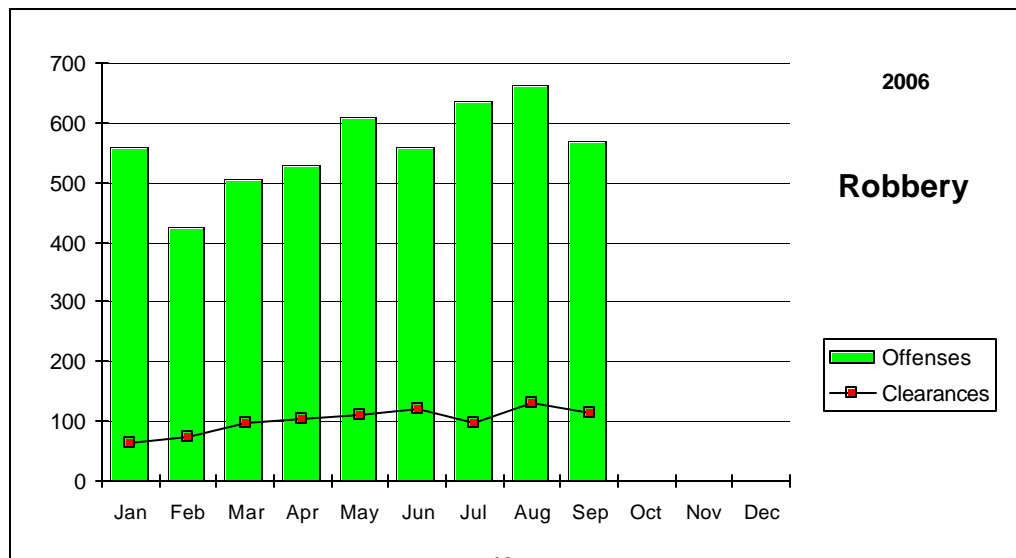
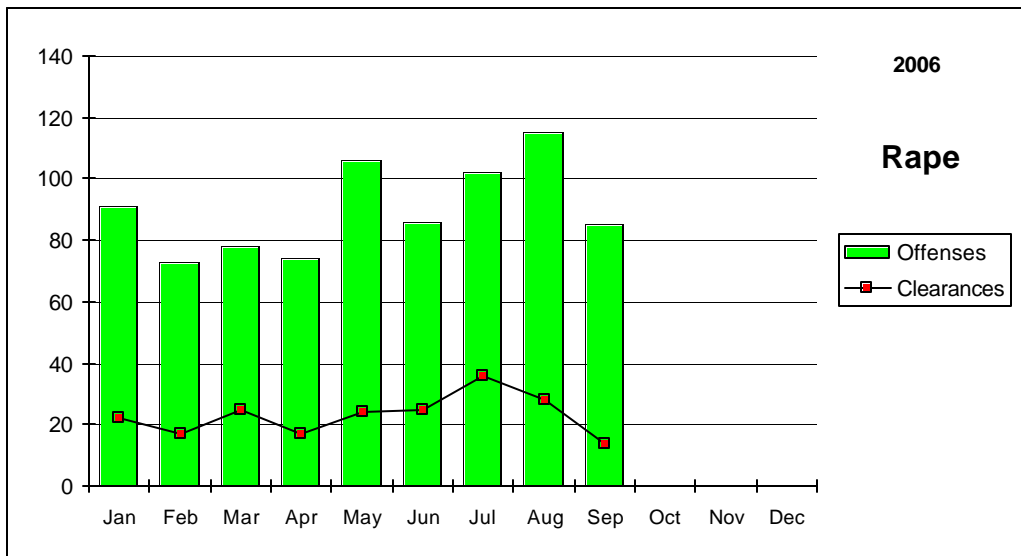
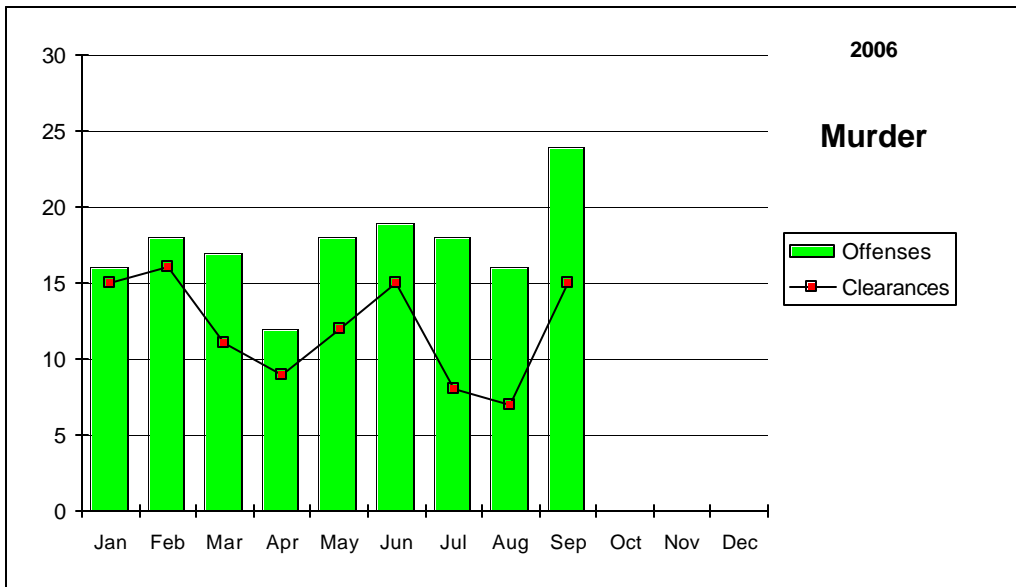
	Murder	Rape	Robbery	Assault	Burglary	Larceny	MV Theft	Arson	Crime Rate
Nevada	0.08	0.44	2.69	4.11	9.76	19.73	10.91	0.34	48.06
National	0.06	0.32	1.41	2.91	7.27	22.86	4.17	0.27	39.27

Nevada (Projected 2006) vs National (2005) Crime Clearance Rates

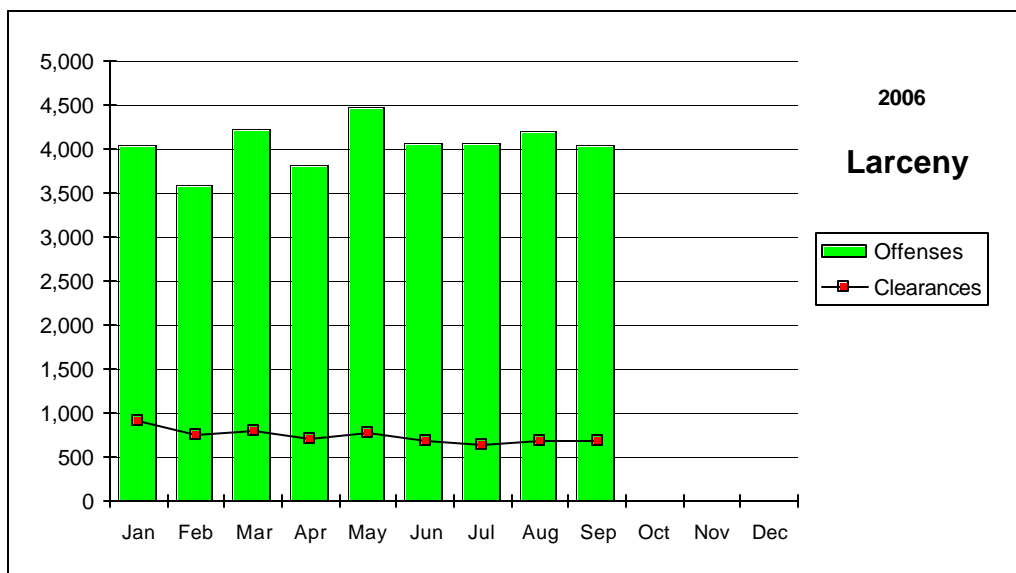
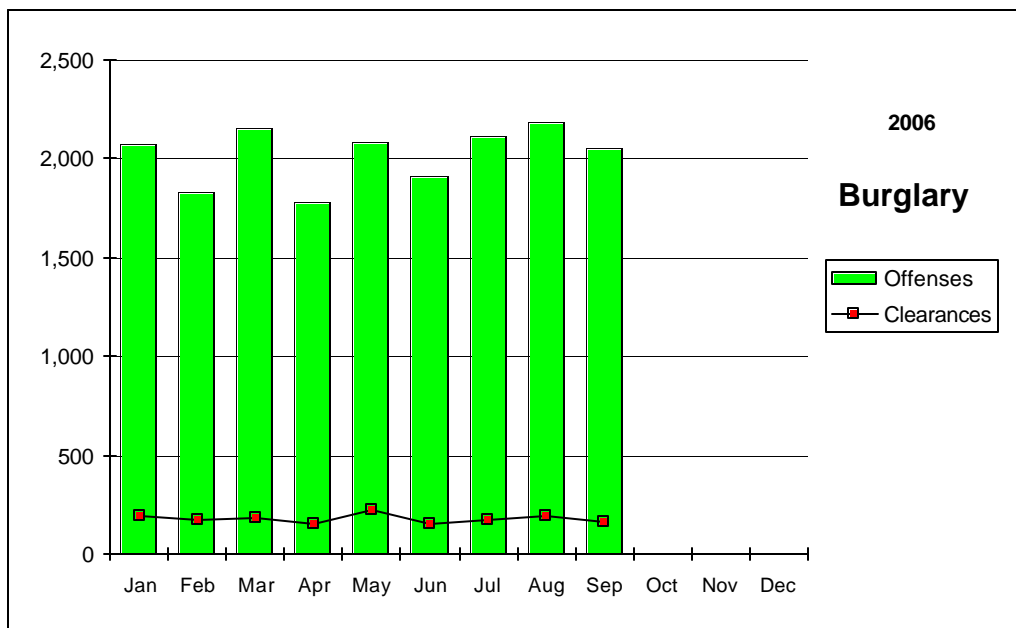
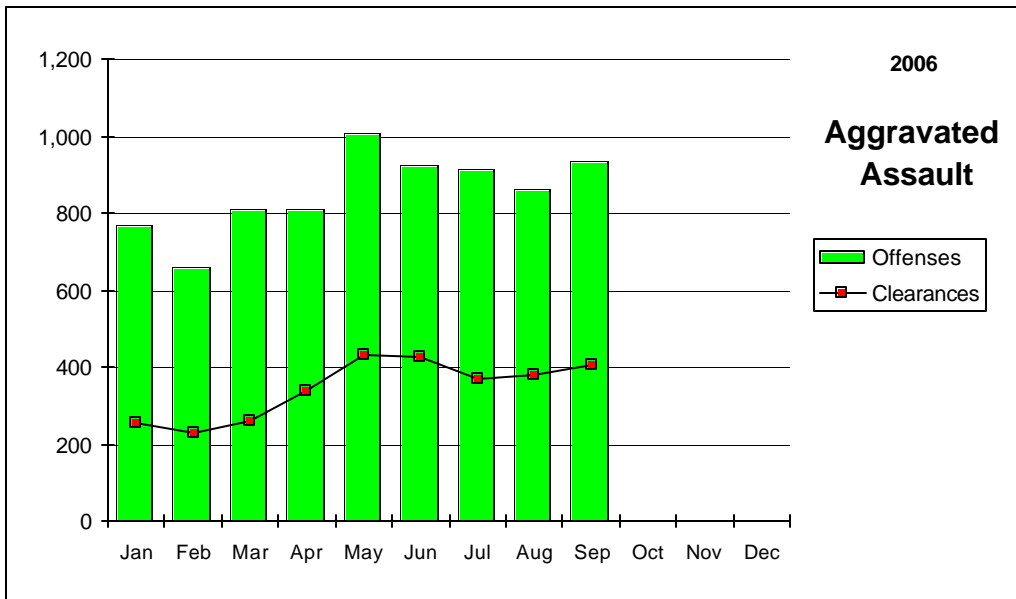
(by Percent)

	Murder	Rape	Robbery	Assault	Burglary	Larceny	MV Theft	Arson	Clear Rate
Nevada	67.9	25.8	17.9	40.3	8.8	18.2	9.7	21.8	21.5
National	62.1	41.3	25.4	55.2	12.7	18.0	13.0	17.9	19.7

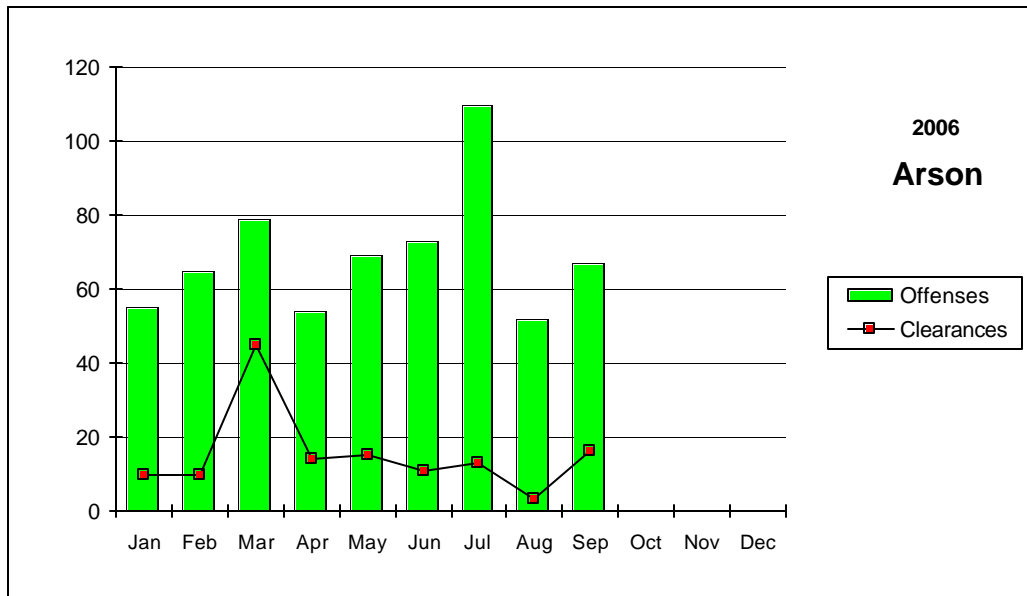
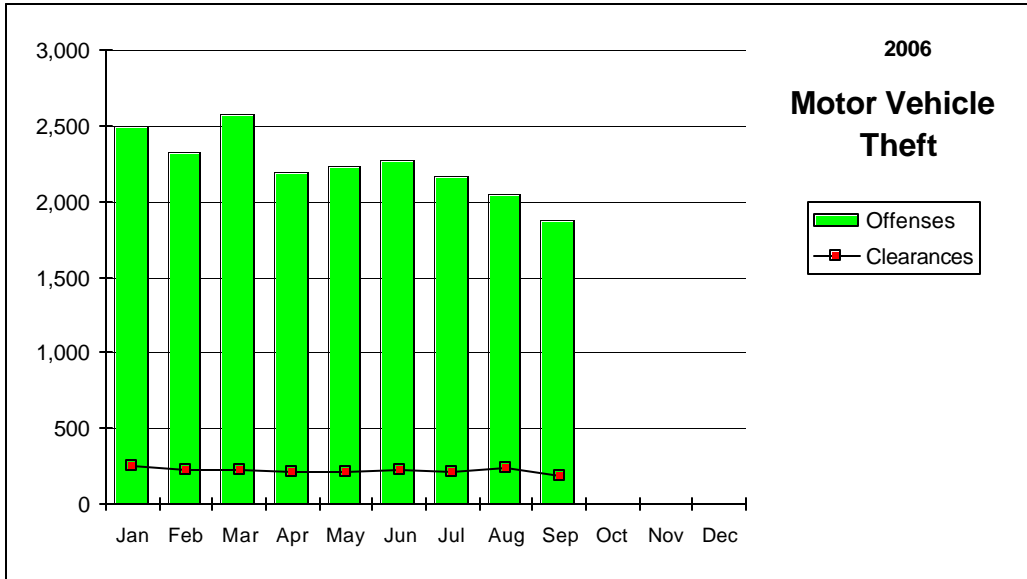
Nevada--Graphic Summary--UCR



Nevada--Graphic Summary--UCR



Nevada--Graphic Summary--UCR



Nevada--Murder--Incidence Level Variation--UCR

September 2006

Agency	September 2006 Offenses	September 2006 Cleared	YTD Offenses	2006 YTD Cleared	September 2005 Offenses	September 2005 Cleared	YTD Offenses	2005 YTD Cleared
Boulder	1	0	1	0	0	0	1	1
Carlin PD	0	0	0	0	0	0	0	0
Carson SO	0	0	2	1	0	1	1	2
Churchill SO	0	0	0	0	0	0	1	1
Clark Co Schl PD	0	0	0	0	0	0	0	0
Douglas SO	1	0	1	0	0	0	1	1
Elko PD	0	0	0	0	1	0	0	0
Elko SO	0	0	0	0	0	0	0	0
Esmeralda SO	0	0	0	0	0	0	0	0
Eureka SO	0	0	0	0	0	0	0	0
Fallon PD	0	0	0	0	0	0	2	2
Henderson PD	0	0	5	1	1	1	9	5
Humboldt SO	0	0	0	0	0	0	0	0
Lander SO	0	0	0	0	0	0	0	0
Lincoln SO	0	0	0	0	0	0	0	0
Lovelock PD	0	0	0	0	0	0	0	0
LV Fire Dept	0	0	0	0	0	0	0	0
LV Metro	18	10	113	80	13	10	116	89
Lyon SO	0	0	1	1	0	0	1	1
Mesquite PD	0	0	1	1	0	0	0	0
Mineral SO	0	0	0	0	0	0	0	0
NLVPD	2	2	16	7	0	0	14	6
Nye SO	0	0	2	3	0	0	3	3
Pershing SO	0	0	1	1	0	0	0	0
Reno PD	1	1	7	7	0	0	4	3
Sparks PD	1	2	3	4	0	0	3	2
Storey SO	0	0	0	0	0	0	0	0
Taxicab Authority	0	0	0	0	0	0	0	0
TMCC PD	0	0	0	0	0	0	0	0
UNLV PD	0	0	0	0	0	0	0	0
UNR PD	0	0	0	0	0	0	0	0
Washoe SO	0	0	4	0	0	0	0	0
Washoe Co Schl PD	0	0	0	0	0	0	0	0
Wendover PD	0	0	1	1	0	0	0	0
White Pine SO	0	0	0	0	0	0	1	0
Winnemucca PD	0	0	1	1	0	0	1	1
Yerington PD	0	0	0	0	0	0	0	0
TOTALS	24	15	159	108	15	12	158	117

Nevada--Rape--Incidence Level Variation--UCR

September 2006

Agency	September 2006	September 2006	2006 YTD		September 2005	September 2005	2005 YTD	
	Offenses	Cleared	Offenses	Cleared	Offenses	Cleared	Offenses	Cleared
Boulder	0	0	2	1	0	0	2	0
Carlin PD	0	0	0	0	0	0	1	0
Carson SO	2	0	2	0	0	0	0	0
Churchill SO	2	2	8	14	3	1	10	16
Clark Co Schl PD	0	0	2	0	0	0	5	0
Douglas SO	2	2	17	12	1	0	19	9
Elko PD	0	0	6	2	0	1	15	5
Elko SO	0	0	4	0	0	0	6	4
Esmeralda SO	0	0	0	0	0	0	0	0
Eureka SO	0	0	1	0	0	0	0	0
Fallon PD	0	0	0	0	0	0	0	0
Henderson PD	7	0	59	29	5	2	32	9
Humboldt SO	0	0	0	0	0	0	0	0
Lander SO	0	0	8	8	0	1	6	1
Lincoln SO	0	0	0	0	0	0	1	0
Lovelock PD	0	0	0	2	0	0	1	0
LV Fire Dept	0	0	0	0	0	0	0	0
LV Metro	58	5	542	92	46	10	475	81
Lyon SO	0	0	4	2	1	0	7	2
Mesquite PD	0	0	1	1	0	0	1	1
Mineral SO	0	0	1	1	0	0	1	1
NLVPD	4	1	41	17	4	2	43	16
Nye SO	2	1	7	6	1	0	8	7
Pershing SO	0	0	5	0	1	0	5	4
Reno PD	3	2	75	13	9	0	87	16
Sparks PD	1	0	33	11	7	3	40	20
Storey SO	0	0	0	0	0	0	0	0
Taxicab Authority	0	0	0	0	0	0	0	0
TMCC PD	0	0	0	0	0	0	0	0
UNLV PD	0	0	0	0	0	0	3	1
UNR PD	0	0	3	0	0	0	4	1
Washoe SO	0	0	0	0	0	0	2	0
Washoe Co Schl PD	0	0	0	0	0	0	0	0
Wendover PD	2	1	2	1	0	0	7	7
White Pine SO	2	0	3	1	0	0	3	1
Winnemucca PD	0	0	2	1	1	0	1	0
Yerington PD	0	0	0	0	0	0	1	3
TOTALS	85	14	828	214	79	20	786	205

Nevada--Robbery--Incidence Level Variation--UCR

September 2006

Agency	September 2006 Offenses	September 2006 Cleared	YTD Offenses	2006 YTD Cleared	September 2005 Offenses	September 2005 Cleared	YTD Offenses	2005 YTD Cleared
Boulder	1	0	3	1	0	0	1	1
Carlin PD	0	0	0	0	0	0	0	0
Carson SO	0	0	17	11	4	2	23	11
Churchill SO	0	0	0	0	0	0	0	0
Clark Co Schl PD	6	2	36	13	1	0	14	2
Douglas SO	0	0	1	0	2	0	14	6
Elko PD	1	0	7	2	0	0	7	3
Elko SO	0	0	0	0	0	0	4	3
Esmeralda SO	0	0	0	0	0	0	0	0
Eureka SO	0	0	0	0	0	0	0	0
Fallon PD	0	0	3	1	0	1	4	3
Henderson PD	0	0	64	11	15	1	94	22
Humboldt SO	0	0	1	1	0	0	1	1
Lander SO	0	0	1	0	1	1	2	1
Lincoln SO	0	0	0	0	0	0	0	0
Lovelock PD	0	0	0	0	0	0	0	0
LV Fire Dept	0	0	0	0	0	0	0	0
LV Metro	439	87	3,961	639	305	45	2,484	397
Lyon SO	0	0	4	2	1	0	8	3
Mesquite PD	1	0	2	1	0	0	4	3
Mineral SO	0	0	0	0	0	0	0	0
NLVPD	47	7	420	64	37	8	291	66
Nye SO	0	0	8	5	2	1	6	3
Pershing SO	0	0	0	0	0	0	1	1
Reno PD	57	15	411	110	32	10	291	91
Sparks PD	10	1	89	30	8	1	63	26
Storey SO	0	0	0	0	0	0	0	0
Taxicab Authority	5	0	30	7	0	0	0	0
TMCC PD	0	0	0	0	0	0	0	0
UNLV PD	0	0	0	0	0	0	3	0
UNR PD	0	0	0	0	0	0	2	1
Washoe SO	1	0	15	5	1	0	10	3
Washoe Co Schl PD	1	1	2	2	0	0	3	1
Wendover PD	0	0	2	1	2	2	4	3
White Pine SO	0	0	1	1	0	0	0	0
Winnemucca PD	1	0	3	2	0	0	4	2
Yerington PD	0	0	0	0	0	0	0	0
TOTALS	570	113	5,081	909	411	72	3,338	653

Nevada--Aggravated Assault--Incidence Level Variation--UCR

September 2006

Agency	September 2006 Offenses	September 2006 Cleared	YTD Offense s	2006 YTD Cleared	September 2005 Offenses	September 2005 Cleared	YTD Offense s	2005 YTD Cleared
Boulder	3	3	8	6	2	1	12	9
Carlin PD	1	0	22	20	1	1	16	8
Carson SO	20	12	123	82	28	7	193	96
Churchill SO	3	4	33	30	4	2	26	23
Clark Co Schl PD	6	4	39	19	4	2	37	28
Douglas SO	3	6	46	25	3	3	35	21
Elko PD	2	0	26	11	1	1	10	4
Elko SO	0	0	11	10	1	1	16	9
Esmeralda SO	2	2	3	3	0	0	2	1
Eureka SO	1	1	5	4	0	0	4	1
Fallon PD	4	2	9	7	2	1	12	7
Henderson PD	17	5	218	130	30	15	180	107
Humboldt SO	3	3	40	39	8	8	45	40
Lander SO	5	4	12	12	0	0	7	6
Lincoln SO	0	0	3	3	0	0	3	3
Lovelock PD	1	1	7	5	1	0	7	6
LV Fire Dept	0	0	0	0	0	0	0	0
LV Metro	639	237	5,129	1,663	532	220	3,851	1,201
Lyon SO	10	7	57	39	9	9	71	65
Mesquite PD	3	2	17	13	0	0	16	13
Mineral SO	0	0	6	6	0	0	5	5
NLVPD	86	39	751	338	105	47	682	352
Nye SO	6	6	81	69	6	6	74	69
Pershing SO	0	0	41	28	3	1	31	14
Reno PD	71	37	637	310	110	54	755	347
Sparks PD	17	14	174	120	23	13	147	101
Storey SO	0	0	0	0	0	0	0	0
Taxicab Authority	12	3	74	19	5	3	29	13
TMCC PD	0	0	0	0	0	0	0	0
UNLV PD	1	0	2	0	2	1	4	1
UNR PD	3	1	24	9	1	0	7	4
Washoe SO	12	9	125	74	20	10	150	72
Washoe Co Schl PD	1	1	7	7	0	0	7	4
Wendover PD	1	1	7	6	4	4	17	16
White Pine SO	3	2	19	17	5	5	23	20
Winnemucca PD	0	0	9	8	0	0	12	11
Yerington PD	0	0	0	0	0	0	1	1
TOTALS	936	406	7,765	3,132	910	415	6,487	2,678

Nevada--All Assaults--Incidence Level Variation--UCR

September 2006

Agency	September 2006 Offenses	September 2006 Cleared	2006 YTD Offenses	2006 YTD Cleared	September 2005 Offenses	September 2005 Cleared	2005 YTD Offenses	2005 YTD Cleared
Boulder	5	5	25	17	4	3	34	20
Carlin PD	1	0	23	20	1	1	26	17
Carson SO	86	43	628	317	64	29	579	337
Churchill SO	29	27	187	169	22	14	200	185
Clark Co Schl PD	79	49	530	284	103	57	632	390
Douglas SO	39	23	485	376	43	36	496	382
Elko PD	24	19	266	164	36	12	201	86
Elko SO	14	8	88	62	13	8	105	67
Esmeralda SO	2	2	5	5	0	0	9	8
Eureka SO	1	1	8	6	1	1	17	12
Fallon PD	19	13	152	110	25	14	207	157
Henderson PD	236	130	2,131	1,327	213	120	1,844	1,067
Humboldt SO	5	5	47	46	8	8	54	47
Lander SO	12	9	84	72	7	5	64	29
Lincoln SO	2	0	18	26	4	0	22	15
Lovelock PD	5	5	49	48	4	1	37	35
LV Fire Dept	0	0	0	0	0	0	0	0
LV Metro	2,409	967	20,539	6,705	2,023	989	18,658	6,569
Lyon SO	60	21	430	240	46	44	469	446
Mesquite PD	12	11	169	150	4	6	136	129
Mineral SO	5	5	51	51	4	4	35	28
NLVPD	339	200	2,629	1,382	321	169	2,598	1,523
Nye SO	60	60	526	507	57	53	424	408
Pershing SO	0	0	47	31	6	3	43	21
Reno PD	371	206	3,708	1,936	424	226	3,419	1,795
Sparks PD	111	87	1,081	700	118	93	1,015	649
Storey SO	6	4	31	19	5	2	27	9
Taxicab Authority	12	3	77	19	5	3	29	13
TMCC PD	0	0	2	1	1	0	1	0
UNLV PD	6	4	26	13	4	1	18	7
UNR PD	3	1	31	11	5	0	16	6
Washoe SO	94	44	753	418	102	59	773	407
Washoe Co Schl PD	6	6	65	65	9	0	51	20
Wendover PD	22	20	72	74	14	14	76	68
White Pine SO	5	4	75	67	15	14	98	92
Winnemucca PD	3	3	55	48	5	5	76	72
Yerington PD	4	4	27	26	3	2	43	43
TOTALS	4,087	1,989	35,120	15,512	3,719	1,996	32,532	15,159

Nevada--Burglary--Incidence Level Variation--UCR

September 2006

Agency	September 2006 Offenses	September 2006 Cleared	YTD Offenses	2006 YTD Cleared	September 2005 Offenses	September 2005 Cleared	YTD Offenses	2005 YTD Cleared
Boulder	7	0	78	8	5	1	101	15
Carlin PD	1	0	17	3	6	0	26	5
Carson SO	25	6	227	52	30	7	290	73
Churchill SO	7	1	83	27	12	2	87	34
Clark Co Schl PD	23	4	189	30	18	2	173	34
Douglas SO	8	3	171	44	21	5	174	39
Elko PD	10	2	114	19	6	1	84	18
Elko SO	7	2	78	13	13	1	73	6
Esmeralda SO	0	0	1	1	0	0	2	0
Eureka SO	0	0	7	1	1	0	3	1
Fallon PD	4	0	38	10	4	1	42	7
Henderson PD	148	21	1,151	154	135	8	1,169	137
Humboldt SO	0	0	9	4	0	0	12	7
Lander SO	1	1	36	26	2	2	43	7
Lincoln SO	0	1	5	5	1	2	13	6
Lovelock PD	2	3	13	12	1	0	13	3
LV Fire Dept	0	0	0	0	0	0	0	0
LV Metro	1,276	65	11,197	634	1,236	287	10,819	2,623
Lyon SO	15	0	150	27	9	1	182	27
Mesquite PD	1	0	9	3	1	0	15	5
Mineral SO	2	2	19	6	0	0	35	5
NLVPD	188	13	1,866	124	121	17	1,332	107
Nye SO	21	3	187	30	21	9	164	51
Pershing SO	0	0	26	3	3	1	28	8
Reno PD	167	15	1,486	121	163	11	1,423	148
Sparks PD	65	8	637	171	69	20	527	179
Storey SO	1	0	13	3	1	0	10	1
Taxicab Authority	0	0	0	0	0	0	0	0
TMCC PD	0	0	3	0	1	0	5	0
UNLV PD	8	0	47	2	7	1	59	3
UNR PD	1	0	7	1	2	0	27	5
Washoe SO	51	2	418	38	28	4	343	36
Washoe Co Schl PD	3	1	21	2	6	1	32	7
Wendover PD	1	0	40	11	5	3	37	13
White Pine SO	1	0	47	7	4	1	45	15
Winnemucca PD	1	1	25	17	3	2	31	13
Yerington PD	5	3	23	20	4	5	25	19
TOTALS	2,050	157	18,438	1,629	1,939	395	17,444	3,657

Nevada--Larceny--Incidence Level Variation--UCR

September 2006

Agency	September 2006	September 2006	2006 YTD		September 2005	September 2005	2005 YTD	
	Offenses	Cleared	Offenses	Cleared	Offense	Cleared	Offenses	Cleared
Boulder	11	0	97	7	13	0	101	4
Carlin PD	1	0	9	2	5	0	18	2
Carson SO	75	16	609	137	103	27	708	199
Churchill SO	16	5	103	39	19	9	126	54
Clark Co Schl PD	62	8	605	86	84	8	588	95
Douglas SO	55	6	573	102	69	17	609	176
Elko PD	29	3	336	32	29	4	354	32
Elko SO	12	1	77	10	11	1	74	3
Esmeralda SO	0	0	4	4	0	0	3	0
Eureka SO	0	0	8	1	1	1	6	3
Fallon PD	27	4	243	40	30	4	320	76
Henderson PD	238	43	2,732	431	311	66	2,765	606
Humboldt SO	0	0	25	11	1	0	39	14
Lander SO	2	2	43	27	12	5	63	10
Lincoln SO	2	1	19	5	2	0	14	3
Lovelock PD	1	1	13	10	3	1	22	13
LV Fire Dept	0	0	0	0	0	0	0	0
LV Metro	2,122	370	19,983	3,769	2,198	447	20,960	4,708
Lyon SO	33	1	317	55	43	8	396	58
Mesquite PD	21	7	205	56	20	2	214	48
Mineral SO	1	0	14	3	1	1	16	2
NLVPD	290	50	2,528	387	269	55	2,373	498
Nye SO	40	15	344	104	47	19	546	235
Pershing SO	0	0	11	2	6	2	38	5
Reno PD	615	112	5,176	1,070	599	160	5,547	1,402
Sparks PD	196	22	1,542	210	160	31	1,502	334
Storey SO	1	0	31	3	6	0	34	1
Taxicab Authority	34	0	312	11	23	1	79	4
TMCC PD	1	0	11	0	1	0	5	0
UNLV PD	37	0	183	12	30	5	174	11
UNR PD	18	1	111	3	18	0	112	5
Washoe SO	71	6	618	54	83	9	545	52
Washoe Co Schl PD	18	5	132	39	31	0	197	41
Wendover PD	11	3	111	25	12	1	102	37
White Pine SO	6	3	88	28	13	2	90	21
Winnemucca PD	6	1	50	13	9	2	79	31
Yerington PD	3	2	8	6	1	1	22	15
TOTALS	4,055	688	37,271	6,794	4,263	889	38,841	8,798

Nevada--MV Theft--Incidence Level Variation--UCR

September 2006

Agency	September 2006				September 2005			
	September 2006 Offenses	September 2006 Cleared	2006 YTD Offenses	2006 YTD Cleared	September 2005 Offenses	September 2005 Cleared	2005 YTD Offenses	2005 YTD Cleared
Boulder	1	0	20	1	0	0	39	0
Carlin PD	2	0	5	1	0	0	0	3
Carson SO	11	2	89	28	9	2	85	24
Churchill SO	1	0	14	5	5	2	23	10
Clark Co Schl PD	2	0	39	10	7	0	35	6
Douglas SO	3	3	51	34	8	7	45	31
Elko PD	4	0	44	6	2	0	27	1
Elko SO	1	0	16	2	3	1	21	7
Esmeralda SO	0	0	1	1	0	0	1	1
Eureka SO	1	0	3	1	0	0	0	0
Fallon PD	0	0	23	8	6	1	20	6
Henderson PD	113	2	1,154	30	137	5	1,040	47
Humboldt SO	0	0	4	3	0	0	5	4
Lander SO	0	0	6	6	0	0	3	0
Lincoln SO	0	0	7	4	0	0	6	4
Lovelock PD	0	0	2	1	1	0	4	3
LV Fire Dept	0	0	0	0	0	0	0	0
LV Metro	1,352	138	15,143	1,399	1,726	174	14,525	1,533
Lyon SO	9	2	60	27	5	1	57	17
Mesquite PD	0	0	47	12	2	0	31	4
Mineral SO	0	0	4	2	0	0	3	1
NLVPD	164	8	1,936	80	223	11	1,799	96
Nye SO	13	4	140	62	19	14	116	76
Pershing SO	0	0	1	1	1	0	4	2
Reno PD	134	17	1,206	154	148	11	983	130
Sparks PD	43	3	333	60	38	12	308	80
Storey SO	0	0	2	0	0	0	5	0
Taxicab Authority	1	0	11	0	3	2	3	0
TMCC PD	0	0	0	0	0	0	0	0
UNLV PD	2	0	32	2	5	0	20	1
UNR PD	0	0	8	1	1	0	5	0
Washoe SO	22	1	166	38	22	2	183	31
Washoe Co Schl PD	0	0	0	0	0	0	1	0
Wendover PD	1	1	14	11	1	1	12	8
White Pine SO	1	0	23	10	3	2	14	8
Winnemucca PD	1	0	12	4	2	2	16	8
Yerington PD	0	0	0	0	0	0	0	0
TOTALS	1,882	181	20,616	2,004	2,377	250	19,439	2,142

Nevada--Arson--Incidence Level Variation--UCR

September 2006

Agency	September	September	2006		September	September	2005	
	2006	2006	2006 YTD	2006	2005	2005	2005 YTD	2005
	Offenses	Cleared	Offenses	Cleared	Offenses	Cleared	Offenses	Cleared
Boulder	0	0	3	0	0	0	2	0
Carlin PD	0	0	0	0	0	0	0	0
Carson SO	0	0	6	3	2	0	17	4
Churchill SO	1	1	2	2	0	0	2	1
Clark Co Schl PD	9	5	67	22	8	1	40	8
Douglas SO	0	0	6	4	1	0	4	1
Elko PD	0	0	8	1	2	0	7	1
Elko SO	0	0	1	0	0	0	0	0
Esmeralda SO	0	0	0	0	0	0	0	0
Eureka SO	0	0	0	0	0	0	0	0
Fallon PD	0	0	0	0	0	0	0	0
Henderson PD	10	5	67	13	5	0	74	26
Humboldt SO	0	0	1	1	1	0	2	1
Lander SO	0	0	0	0	0	0	0	0
Lincoln SO	1	0	1	2	0	0	0	0
Lovelock PD	0	0	0	0	0	0	0	0
LV Fire Dept	6	2	59	10	5	1	79	18
LV Metro	23	0	247	34	33	0	245	0
Lyon SO	3	1	13	2	0	0	5	3
Mesquite PD	0	0	0	0	0	0	0	0
Mineral SO	0	0	1	1	0	0	2	1
NLVPD	4	0	46	6	2	1	30	2
Nye SO	1	0	27	21	3	2	16	9
Pershing SO	0	0	0	0	0	0	0	0
Reno PD	1	0	31	3	2	1	39	2
Sparks PD	3	0	17	4	1	0	6	6
Storey SO	0	0	0	0	0	0	1	0
Taxicab Authority	0	0	0	0	0	0	0	0
TMCC PD	0	0	0	0	0	0	0	0
UNLV PD	0	0	1	0	0	0	1	1
UNR PD	0	0	0	0	0	0	0	0
Washoe SO	1	0	9	1	0	0	3	1
Washoe CO Scl PD	1	0	15	2	0	0	10	0
Wendover PD	1	1	3	2	3	3	1	0
White Pine SO	1	0	1	0	0	0	1	1
Winnemucca PD	1	1	6	5	0	0	1	1
Yerington PD	0	0	0	0	0	0	0	0
TOTALS	67	16	638	139	68	9	588	87

State of Nevada

Hate Crimes Reports for September 2006

#	Agency	ORI	Incident #	Date of Incident	UCR Offense	Location	Bias Motivation	Victim Type and Number	Offender Race and Number
1	WCSO	NV0160000	610468	9/11/2006	11-Destruction/Damage	20-Residence/Home	32-Anti-Hispanic	Individual-1	White-1
2	LVMPD	NV0020100	609011775	9/1/2006	09-Simple Assault	06-Construction Site	12-Anti-Black	Individual-1	White-1
3	LVMPD	NV0020100	609031211	9/3/2006	09-Simple Assault	03-Bar/Night Club	41-Anti-Male Homosexual	Individual-1	White/Hispanic-2
4	LVMPD	NV0020100	609091991	9/9/2006	09-Simple Assault	01-Air/Bus/train Term	11-Anti-White	Individual-1	Black-1
5	LVMPD	NV0020100	606100082	9/10/2006	09-Simple Assault	03-Bar/Night Club	12-Anti-Black	Individual-1	White-2
6	LVMPD	NV0020100	609161996	9/16/2006	10-Intimidation	20-Residence/Home	21-Anti-Jewish	Individual-1	White-1
7	LVMPD	NV0020100	609180603	9/18/2006	04-Aggravated Assault	13-Highway/Road	12-Anti-Black	Individual-1	White-2/Hispanic-1
8	LVMPD	NV0020100	609212633	9/21/2006	03-Robbery	13-Highway/Road	32-Anti-Hispanic	Individual-1	White-1
9	LVMPD	NV0020100	609253025	9/25/2006	04-Aggravated Assault	20-Residence/Home	12-Anti-Black	Individual-1	White-2
10	LVMPD	NV0020100	609261430	9/26/2006	09-Simple Assault	14-Hotel/Motel	32-Anti-Hispanic	Individual-1	White-1
11	LVMPD	NV0020100	609261894	9/26/2006	04-Aggravated Assault	13-Highway/Road	11-Anti-White	Individual-1	Black-2
12	LVMPD	NV0020100	609272615	9/27/2006	09-Simple Assault	20-Residence/Home	12-Anti-Black	Individual-1	White-2
13	LVMPD	NV0020100	609281632	9/28/2006	10-Intimidation	20-Residence/Home	12-Anti-Black	Individual-1	White-2
14	LVMPD	NV0020100	609292891	9/29/2006	09-Simple Assault	25-Other	41-Anti-Male Homosexual	Individual-1	White-1
15	Reno	NV 0160100	60010468	9/11/2006	11-Destruction/Damage	20-Residence/Home	32-Anti-Hispanic	Individual-1	White-1
16	WINN	NV0070100	60695	9/2/2006	10-Intimidation	02-Bank/Savings & Loan	32-Anti-Hispanic	Individual-1	White-1

Stolen/Recovered Property Report

September 2006

Property Type	Boulder PD	Carlin PD	Carson SO	Churchill SO	Clark Co Schl PD	Douglas SO	Elko PD	Elko SO	Esmeralda SO
Currency									
Stolen	\$319	\$0	\$4,495	\$4,925	\$1,383	\$4,044	\$2,052	\$200	\$0
Recovered	\$0	\$0	\$600	\$100	\$0	\$0	\$0	\$0	\$0
% Recovered	0.0%	0.0%	13.3%	2.0%	0.0%	0.0%	0.0%	0.0%	0.0%
Jewelry									
Stolen	\$0	\$0	\$15,676	\$0	\$0	\$7,870	\$0	\$300	\$0
Recovered	\$0	\$0	\$0	\$0	\$0	\$0	\$0	\$0	\$0
% Recovered	0.0%	0.0%	0.0%	0.0%	0.0%	0.0%	0.0%	0.0%	0.0%
Clothing									
Stolen	\$0	\$0	\$1,619	\$0	\$625	\$1,570	\$0	\$0	\$0
Recovered	\$0	\$0	\$725	\$0	\$0	\$95	\$0	\$0	\$0
% Recovered	0.0%	0.0%	44.8%	0.0%	0.0%	6.1%	0.0%	0.0%	0.0%
Motor Vehicle									
Stolen	\$5,000	\$1,475	\$38,749	\$4,500	\$10,000	\$12,600	\$83,750	\$10,000	\$0
Recovered	\$5,000	\$0	\$7,600	\$0	\$0	\$12,000	\$82,250	\$10,000	\$0
% Recovered	100.0%	0.0%	19.6%	0.0%	0.0%	95.2%	98.2%	100.0%	0.0%
Office Equipment									
Stolen	\$0	\$0	\$3,790	\$0	\$13,823	\$860	\$0	\$0	\$0
Recovered	\$0	\$0	\$0	\$0	\$0	\$200	\$0	\$0	\$0
% Recovered	0.0%	0.0%	0.0%	0.0%	0.0%	23.3%	0.0%	0.0%	0.0%
TV, VCR, Camera, Etc.									
Stolen	\$0	\$0	\$7,352	\$0	\$4,074	\$13,533	\$28	\$299	\$0
Recovered	\$0	\$0	\$0	\$0	\$349	\$0	\$0	\$0	\$0
% Recovered	0.0%	0.0%	0.0%	0.0%	8.6%	0.0%	0.0%	0.0%	0.0%
Firearm									
Stolen	\$1,200	\$0	\$1,740	\$230	\$0	\$3,100	\$0	\$1,100	\$0
Recovered	\$0	\$0	\$630	\$0	\$0	\$0	\$0	\$0	\$0
% Recovered	0.0%	0.0%	36.2%	0.0%	0.0%	0.0%	0.0%	0.0%	0.0%
Household Goods									
Stolen	\$250	\$0	\$110	\$0	\$0	\$250	\$0	\$0	\$0
Recovered	\$0	\$0	\$0	\$0	\$0	\$0	\$0	\$0	\$0
% Recovered	0.0%	0.0%	0.0%	0.0%	0.0%	0.0%	0.0%	0.0%	0.0%
Consumable Goods									
Stolen	\$160	\$0	\$70	\$2,441	\$0	\$217	\$217	\$978	\$0
Recovered	\$150	\$0	\$70	\$0	\$0	\$20	\$0	\$0	\$0
% Recovered	93.8%	0.0%	100.0%	0.0%	0.0%	9.2%	0.0%	0.0%	0.0%
Livestock									
Stolen	\$0	\$0	\$196	\$0	\$0	\$0	\$0	\$1,750	\$0
Recovered	\$0	\$0	\$0	\$0	\$0	\$0	\$0	\$0	\$0
% Recovered	0.0%	0.0%	0.0%	0.0%	0.0%	0.0%	0.0%	0.0%	0.0%
Misc.									
Stolen	\$29,231	\$40,050	\$41,529	\$16,249	\$59,945	\$14,051	\$5,796	\$6,212	\$0
Recovered	\$7,670	\$0	\$1,305	\$5,375	\$700	\$930	\$200	\$100	\$0
% Recovered	26.2%	0.0%	3.1%	33.1%	1.2%	6.6%	3.5%	1.6%	0.0%
TOTALS									
Stolen	\$36,160	\$41,525	\$115,326	\$28,345	\$89,850	\$58,095	\$91,843	\$20,839	\$0
Recovered	\$12,820	\$0	\$10,930	\$5,475	\$1,049	\$13,245	\$82,450	\$10,100	\$0
% Recovered	35.5%	0.0%	9.5%	19.3%	1.2%	22.8%	89.8%	48.5%	0.0%

Stolen/Recovered Property Report

September

Property Type	Eureka SO	Fallon PD	Henderson PD	Humboldt SO	Lander SO	Las Vegas Metro	Lincoln SO	Lovelock PD	Lyon SO
Currency									
Stolen	\$0	\$540	\$107,550	\$0	\$0	\$2,021,291	\$500	\$0	\$11,401
Recovered	\$0	\$0	\$6,442	\$0	\$0	\$20,084	\$0	\$0	\$0
% Recovered	0.0%	0.0%	6.0%	0.0%	0.0%	1.0%	0.0%	0.0%	0.0%
Jewelry									
Stolen	\$0	\$0	\$524,150	\$0	\$0	\$1,861,323	\$0	\$0	\$1,960
Recovered	\$0	\$0	\$434	\$0	\$0	\$2,613	\$0	\$0	\$0
% Recovered	0.0%	0.0%	0.1%	0.0%	0.0%	0.1%	0.0%	0.0%	0.0%
Clothing									
Stolen	\$0	\$0	\$16,065	\$0	\$0	\$371,344	\$390	\$0	\$0
Recovered	\$0	\$0	\$2,792	\$0	\$0	\$15,782	\$230	\$0	\$0
% Recovered	0.0%	0.0%	17.4%	0.0%	0.0%	4.2%	59.0%	0.0%	0.0%
Motor Vehicle									
Stolen	\$7,500	\$0	\$1,605,731	\$0	\$0	\$2,235,558	\$0	\$0	\$47,456
Recovered	\$0	\$0	\$1,506,201	\$0	\$0	\$440,045	\$0	\$0	\$19,600
% Recovered	0.0%	0.0%	93.8%	0.0%	0.0%	19.7%	0.0%	0.0%	41.3%
Office Equipment									
Stolen	\$0	\$100	\$61,241	\$0	\$0	\$569,201	\$0	\$0	\$15
Recovered	\$0	\$0	\$10	\$0	\$0	\$8,685	\$0	\$0	\$15
% Recovered	0.0%	0.0%	0.0%	0.0%	0.0%	1.5%	0.0%	0.0%	100.0%
TV, VCR, Camera, Etc.									
Stolen	\$0	\$1,285	\$116,378	\$0	\$0	\$810,623	\$100	\$0	\$9,468
Recovered	\$0	\$0	\$7,796	\$0	\$0	\$8,252	\$100	\$0	\$140
% Recovered	0.0%	0.0%	6.7%	0.0%	0.0%	1.0%	100.0%	0.0%	1.5%
Firearm									
Stolen	\$0	\$0	\$12,900	\$0	\$0	\$62,571	\$900	\$0	\$8,666
Recovered	\$0	\$0	\$3,400	\$0	\$0	\$1,400	\$0	\$0	\$0
% Recovered	0.0%	0.0%	26.4%	0.0%	0.0%	2.2%	0.0%	0.0%	0.0%
Household Goods									
Stolen	\$0	\$20	\$34,454	\$0	\$0	\$152,663	\$30	\$0	\$18,520
Recovered	\$200	\$0	\$0	\$0	\$0	\$414	\$30	\$0	\$1,170
% Recovered	0.0%	0.0%	0.0%	0.0%	0.0%	0.3%	100.0%	0.0%	6.3%
Consumable Goods									
Stolen	\$0	\$0	\$3,675	\$0	\$3	\$75,401	\$0	\$16	\$823
Recovered	\$0	\$0	\$304	\$0	\$0	\$4,041	\$0	\$12	\$5
% Recovered	0.0%	0.0%	8.3%	0.0%	0.0%	5.4%	0.0%	75.0%	0.7%
Livestock									
Stolen	\$0	\$0	\$0	\$0	\$0	\$350	\$0	\$0	\$0
Recovered	\$0	\$0	\$0	\$0	\$0	\$0	\$0	\$0	\$0
% Recovered	0.0%	0.0%	0.0%	0.0%	0.0%	0.0%	0.0%	0.0%	0.0%
Misc.									
Stolen	\$0	\$2,346	\$481,802	\$0	\$200	\$4,170,441	\$806	\$5	\$18,407
Recovered	\$0	\$500	\$118,010	\$0	\$0	\$29,793	\$535	\$0	\$1,170
% Recovered	0.0%	21.3%	24.5%	0.0%	0.0%	0.7%	66.4%	0.0%	6.4%
TOTALS									
Stolen	\$7,500	\$4,291	\$2,963,946	\$0	\$203	\$12,330,766	\$2,726	\$21	\$116,717
Recovered	\$200	\$500	\$1,645,389	\$0	\$0	\$531,109	\$895	\$12	\$22,100
% Recovered	2.7%	11.7%	55.5%	0.0%	0.0%	4.3%	32.8%	57.1%	18.9%

Stolen/Recovered Property Report

September 2006

Property Type	Mesquite PD	Mineral SO	NLVDPD	Nye SO	Pershing SO	Reno PD	Sparks PD	Storey SO	Taxicab	TMCC PD
Currency										
Stolen	\$0	\$290	\$91,561	\$21,496	\$0	\$76,649	\$36,902	\$0	\$2,248	\$0
Recovered	\$0	\$0	\$30	\$2,560	\$0	\$1,084	\$0	\$0	\$0	\$0
% Recovered	0.0%	0.0%	0.0%	11.9%	0.0%	1.4%	0.0%	0.0%	0.0%	0.0%
Jewelry										
Stolen	\$1,000	\$0	\$193,625	\$3,475	\$0	\$345,094	\$108,825	\$0	\$0	\$0
Recovered	\$400	\$0	\$5,425	\$1,800	\$0	\$1,181	\$15,762	\$0	\$0	\$0
% Recovered	40.0%	0.0%	2.8%	51.8%	0.0%	0.3%	14.5%	0.0%	0.0%	0.0%
Clothing										
Stolen	\$300	\$0	\$25,510	\$0	\$0	\$37,598	\$1,283	\$0	\$50	\$0
Recovered	\$0	\$0	\$413	\$0	\$0	\$3,923	\$123	\$0	\$0	\$0
% Recovered	0.0%	0.0%	1.6%	0.0%	0.0%	10.4%	9.6%	0.0%	0.0%	0.0%
Motor Vehicle										
Stolen	\$0	\$0	\$1,562,362	\$53,450	\$0	\$789,131	\$382,778	\$0	\$12,000	\$0
Recovered	\$0	\$0	\$1,543,647	\$0	\$0	\$671,494	\$255,058	\$0	\$0	\$0
% Recovered	0.0%	0.0%	98.8%	0.0%	0.0%	85.1%	66.6%	0.0%	0.0%	0.0%
Office Equipment										
Stolen	\$0	\$0	\$6,906	\$1,650	\$0	\$42,536	\$16,672	\$0	\$0	\$0
Recovered	\$0	\$0	\$0	\$0	\$0	\$300	\$45	\$0	\$0	\$0
% Recovered	0.0%	0.0%	0.0%	0.0%	0.0%	0.7%	0.3%	0.0%	0.0%	0.0%
TV, VCR, Camera, Etc.										
Stolen	\$2,146	\$0	\$239,653	\$348	\$0	\$109,223	\$59,695	\$0	\$4,940	\$0
Recovered	\$0	\$0	\$8,796	\$48	\$0	\$800	\$410	\$0	\$0	\$0
% Recovered	0.0%	0.0%	3.7%	13.8%	0.0%	0.7%	0.7%	0.0%	0.0%	0.0%
Firearm										
Stolen	\$0	\$0	\$9,779	\$1,500	\$0	\$13,292	\$4,745	\$0	\$0	\$0
Recovered	\$0	\$0	\$0	\$600	\$0	\$0	\$0	\$0	\$0	\$0
% Recovered	0.0%	0.0%	0.0%	40.0%	0.0%	0.0%	0.0%	0.0%	0.0%	0.0%
Household Goods										
Stolen	\$0	\$0	\$22,033	\$11,633	\$0	\$17,115	\$45,835	\$0	\$0	\$0
Recovered	\$0	\$0	\$1,558	\$0	\$0	\$465	\$2,714	\$0	\$0	\$0
% Recovered	0.0%	0.0%	7.1%	0.0%	0.0%	2.7%	5.9%	0.0%	0.0%	0.0%
Consumable Goods										
Stolen	\$0	\$0	\$118,165	\$29	\$0	\$698	\$1,233	\$0	\$0	\$0
Recovered	\$0	\$0	\$1,720	\$0	\$0	\$463	\$34	\$0	\$0	\$0
% Recovered	0.0%	0.0%	1.5%	0.0%	0.0%	66.3%	2.8%	0.0%	0.0%	0.0%
Livestock										
Stolen	\$0	\$0	\$600	\$0	\$0	\$0	\$0	\$0	\$0	\$0
Recovered	\$0	\$0	\$0	\$0	\$0	\$0	\$0	\$0	\$0	\$0
% Recovered	0.0%	0.0%	0.0%	0.0%	0.0%	0.0%	0.0%	0.0%	0.0%	0.0%
Misc.										
Stolen	\$12,617	\$0	\$787,237	\$33,583	\$0	\$274,779	\$112,719	\$2,144	\$650	\$368
Recovered	\$20	\$0	\$70,186	\$10,040	\$0	\$16,358	\$26,007	\$2,144	\$0	\$0
% Recovered	0.2%	0.0%	8.9%	29.9%	0.0%	6.0%	23.1%	100.0%	0.0%	0.0%
TOTALS										
Stolen	\$16,063	\$290	\$3,057,431	\$127,164	\$0	\$1,706,115	\$770,687	\$2,144	\$19,888	\$368
Recovered	\$420	\$0	\$1,631,775	\$15,048	\$0	\$696,068	\$300,153	\$2,144	\$0	\$0
% Recovered	2.6%	0.0%	53.4%	11.8%	0.0%	40.8%	38.9%	100.0%	0.0%	0.0%

Stolen/Recovered Property Report

September

Property Type	UNLV PD	UNR PD	Washoe SO	Washoe Co Schl PD	Wendover PD	White Pine SO	Winnemucca PD	Yerington PD	Total By Property
Currency									
Stolen	\$1,127	\$0	\$11,761	\$539	\$700	\$22	\$1,250	\$0	\$2,403,245
Recovered	\$0	\$0	\$0	\$0	\$200	\$22	\$0	\$0	\$31,122
% Recovered	0.0%	0.0%	0.0%	0.0%	28.6%	100.0%	0.0%	0.0%	1.3%
Jewelry									
Stolen	\$38,650	\$0	\$106,770	\$0	\$1,400	\$0	\$0	\$0	\$3,210,118
Recovered	\$0	\$0	\$0	\$0	\$0	\$0	\$0	\$0	\$27,615
% Recovered	0.0%	0.0%	0.0%	0.0%	0.0%	0.0%	0.0%	0.0%	0.9%
Clothing									
Stolen	\$55	\$0	\$630	\$0	\$520	\$0	\$0	\$0	\$457,559
Recovered	\$0	\$0	\$0	\$0	\$0	\$0	\$0	\$0	\$24,083
% Recovered	0.0%	0.0%	0.0%	0.0%	0.0%	0.0%	0.0%	0.0%	5.3%
Motor Vehicle									
Stolen	\$44,426	\$0	\$145,810	\$0	\$6,000	\$800	\$2,675	\$0	\$7,061,751
Recovered	\$0	\$0	\$122,135	\$0	\$6,000	\$0	\$0	\$0	\$4,681,030
% Recovered	0.0%	0.0%	83.8%	0.0%	100.0%	0.0%	0.0%	0.0%	66.3%
Office Equipment									
Stolen	\$0	\$7,471	\$19,835	\$35,871	\$0	\$0	\$0	\$0	\$779,971
Recovered	\$0	\$2,000	\$150	\$13,591	\$0	\$0	\$0	\$0	\$24,996
% Recovered	0.0%	26.8%	0.8%	37.9%	0.0%	0.0%	0.0%	0.0%	3.2%
TV, VCR, Camera, Etc.									
Stolen	\$18,324	\$1,345	\$115,604	\$2,036	\$2,390	\$700	\$0	\$0	\$1,519,544
Recovered	\$0	\$0	\$0	\$0	\$0	\$0	\$0	\$0	\$26,691
% Recovered	0.0%	0.0%	0.0%	0.0%	0.0%	0.0%	0.0%	0.0%	1.8%
Firearm									
Stolen	\$0	\$0	\$4,100	\$0	\$0	\$250	\$250	\$0	\$126,323
Recovered	\$0	\$0	\$0	\$0	\$0	\$0	\$0	\$0	\$6,030
% Recovered	0.0%	0.0%	0.0%	0.0%	0.0%	0.0%	0.0%	0.0%	4.8%
Household Goods									
Stolen	\$0	\$0	\$15,071	\$0	\$0	\$0	\$0	\$0	\$317,984
Recovered	\$0	\$0	\$0	\$0	\$0	\$0	\$0	\$0	\$6,551
% Recovered	0.0%	0.0%	0.0%	0.0%	0.0%	0.0%	0.0%	0.0%	2.1%
Consumable Goods									
Stolen	\$17	\$0	\$30,289	\$0	\$14	\$32	\$0	\$0	\$234,478
Recovered	\$0	\$0	\$30,000	\$0	\$14	\$2	\$0	\$0	\$36,835
% Recovered	0.0%	0.0%	99.0%	0.0%	100.0%	5.0%	0.0%	0.0%	15.7%
Livestock									
Stolen	\$0	\$0	\$0	\$0	\$0	\$0	\$0	\$0	\$2,896
Recovered	\$0	\$0	\$0	\$0	\$0	\$0	\$0	\$0	\$0
% Recovered	0.0%	0.0%	0.0%	0.0%	0.0%	0.0%	0.0%	0.0%	0.0%
Misc.									
Stolen	\$11,210	\$7,671	\$258,849	\$4,075	\$352	\$0	\$660	\$1,910	\$6,395,894
Recovered	\$0	\$0	\$17,281	\$657	\$2	\$0	\$0	\$0	\$308,983
% Recovered	0.0%	0.0%	6.7%	16.1%	0.0%	0.0%	0.0%	0.0%	4.8%
TOTALS									
Stolen	\$113,809	\$16,487	\$708,719	\$42,521	\$11,376	\$1,804	\$4,835	\$1,910	\$22,509,763
Recovered	\$0	\$2,000	\$169,566	\$14,248	\$6,216	\$23	\$0	\$0	\$5,173,936
% Recovered	0.0%	12.1%	23.9%	33.5%	54.6%	1.3%	0.0%	0.0%	23.0%

Nevada--Assaults on Officers by Agency--UCR

September 2006

Agency	September 2006 Offenses	September 2006 Cleared	2006 YTD Offenses	2006 YTD Cleared	September 2005 Offenses	September 2005 Cleared	2005 YTD Offenses	2005 YTD Cleared
Boulder	0	0	0	0	3	3	5	5
Carlin PD	0	0	1	0	0	0	2	2
Carson SO	1	1	6	5	1	1	5	5
Churchill SO	3	3	12	11	0	0	3	3
ClrkSchIDst PD	0	0	10	9	0	0	0	0
Douglas SO	0	0	7	7	1	1	7	7
Elko PD	0	0	7	4	0	0	4	3
Elko SO	0	0	0	0	0	0	0	0
Esmeralda SO	0	0	0	0	0	0	0	0
Eureka SO	0	0	2	2	0	0	0	0
Fallon PD	0	0	1	1	0	0	0	0
Henderson PD	2	2	7	5	1	1	26	26
Highway Patrol	5	5	29	27	3	2	18	13
Humboldt SO	0	0	0	0	0	0	0	0
Lander SO	0	0	0	0	0	0	0	0
Lincoln SO	0	0	0	0	0	0	0	0
Lovelock PD	0	0	0	0	0	0	0	0
LV Fire Dept	0	0	0	0	0	0	0	0
LV Metro	33	31	304	289	32	32	205	202
Lyon SO	0	0	8	8	1	1	9	9
Mesquite PD	0	0	0	0	0	0	0	0
Mineral SO	0	0	0	0	0	0	0	0
NV Div Investigations	0	0	0	0	0	0	0	0
NLVPD	5	5	23	21	7	7	32	31
Nye SO	2	2	10	5	0	0	2	2
Pershing SO	0	0	0	0	0	0	0	0
Reno PD	5	5	16	16	1	1	13	13
Sparks PD	2	2	7	6	0	0	1	1
Storey SO	0	0	0	0	0	0	0	0
Taxicab Authority	0	0	0	0	0	0	0	0
TMCC PD	0	0	0	0	0	0	0	0
UNLV PD	0	0	0	0	0	0	1	1
UNR PD	0	0	0	0	0	0	1	1
Washoe SO	0	0	0	0	0	0	0	0
Washoe Co Schl PD	0	0	0	0	0	0	0	0
Wendover PD	0	0	4	4	0	0	4	4
White Pine SO	1	1	2	1	5	5	5	5
Winnemucca PD	0	0	2	2	0	0	2	2
Yerington PD	0	0	0	0	0	0	0	0
TOTALS	59	57	458	423	55	54	345	335

Nevada -- Assaults by Agency/Weapon/Assignment -- UCR

September 2006

Table 16

Agency	Total Assaults	Number Cleared	Firearm	Knife / Cutting Device	Other Danger. Weapon	Hands, Fists, Feet, Etc.	2-Officer Vehicle	1-Officer Vehicle- Alone	1-Officer Vehicle- Assisted	Det./Spec. Assign. - Alone	Det./Spec. Assign. - Assisted	Other- Alone	Other- Assisted
Boulder City PD	0	0	0	0	0	0	0	0	0	0	0	0	0
Carlin PD	0	0	0	0	0	0	0	0	0	0	0	0	0
Carson City SO	1	1	0	0	0	1	1	0	0	0	0	0	0
Churchill Co SO	3	3	3	0	0	0	0	0	0	0	0	0	3
Clark School Dist PD	0	0	0	0	0	0	0	0	0	0	0	0	0
Douglas Co SO	0	0	0	0	0	0	0	0	0	0	0	0	0
Elko PD	0	0	0	0	0	0	0	0	0	0	0	0	0
Elko Co SO	0	0	0	0	0	0	0	0	0	0	0	0	0
Esmeralda Co SO	0	0	0	0	0	0	0	0	0	0	0	0	0
Eureka Co SO	0	0	0	0	0	0	0	0	0	0	0	0	0
Fallon PD	0	0	0	0	0	0	0	0	0	0	0	0	0
Henderson PD	2	2	0	0	0	2	0	0	0	0	0	2	0
NV Highway Patrol	5	5	0	0	0	5	1	4	0	0	0	0	0
Humboldt Co SO	0	0	0	0	0	0	0	0	0	0	0	0	0
Lander Co SO	0	0	0	0	0	0	0	0	0	0	0	0	0
Lincoln Co SO	0	0	0	0	0	0	0	0	0	0	0	0	0
Lovelock PD	0	0	0	0	0	0	0	0	0	0	0	0	0
Las Vegas Fire Dept	0	0	0	0	0	0	0	0	0	0	0	0	0
Las Vegas Metro PD	33	31	3	2	3	25	22	4	5	0	2	0	0
Lyon Co SO	0	0	0	0	0	0	0	0	0	0	0	0	0
Mesquite PD	0	0	0	0	0	0	0	0	0	0	0	0	0
Mineral Co SO	0	0	0	0	0	0	0	0	0	0	0	0	0
NV Div of Investigations	0	0	0	0	0	0	0	0	0	0	0	0	0
North Las Vegas PD	5	5	0	0	1	4	2	1	1	0	0	1	0
Nye Co SO	2	2	0	0	0	2	0	2	0	0	0	0	0
Pershing Co SO	0	0	0	0	0	0	0	0	0	0	0	0	0
Reno PD	5	5	0	0	0	5	3	1	1	0	0	0	0
Sparks PD	2	2	0	0	0	2	0	2	0	0	0	0	0
Storey Co SO	0	0	0	0	0	0	0	0	0	0	0	0	0
Taxi Authority	0	0	0	0	0	0	0	0	0	0	0	0	0
TMCC PD	0	0	0	0	0	0	0	0	0	0	0	0	0
UNLV PD	0	0	0	0	0	0	0	0	0	0	0	0	0
UNR PD	0	0	0	0	0	0	0	0	0	0	0	0	0
Washoe Co SO	0	0	0	0	0	0	0	0	0	0	0	0	0
Washoe Co School PD	0	0	0	0	0	0	0	0	0	0	0	0	0
West Wendover PD	0	0	0	0	0	0	0	0	0	0	0	0	0
White Pine Co SO	1	1	0	0	0	1	0	0	1	0	0	0	0
Winnemucca PD	0	0	0	0	0	0	0	0	0	0	0	0	0
Yerington PD	0	0	0	0	0	0	0	0	0	0	0	0	0
TOTALS	59	57	6	2	4	47	29	14	8	0	2	3	3

28

Nevada -- Officer Assaults by Activity/Weapon/Assignment -- UCR

September 2006

Table 17

ACTIVITY TYPE	Total Assaults	Number Cleared	Firearm	Knife / Cutting Device	Other Danger. Weapon	Hands, Fists, Feet, Etc.	2-Officer Vehicle	1-Officer Vehicle- Alone	1-Officer Vehicle- Assisted	Det./Spec. Assign.- Alone	Det./Spec. Assign.- Assisted	Other- Alone	Other- Assisted
DOMESTIC / OTHER DISTURBANCE	26	26	0	2	2	22	20	1	4	0	1	0	0
BURGLARY IN PROGRESS	0	0	0	0	0	0	0	0	0	0	0	0	0
ROBBERY IN PROGRESS	1	1	0	0	0	1	1	0	0	0	0	0	0
ATTEMPTING OTHER ARREST	5	5	0	0	0	5	0	4	0	0	0	1	0
CIVIL DISORDER	4	4	3	0	0	1	0	0	1	0	0	0	3
HANDLING PRISONER	5	5	0	0	0	5	2	1	1	0	0	1	0
INVEST. SUSP. PERSONS / CIRCUM.	3	3	1	0	0	2	2	1	0	0	0	0	0
AMBUSH-NO WARNING	2	0	2	0	0	0	0	0	2	0	0	0	0
MENTALLY DERANGED	0	0	0	0	0	0	0	0	0	0	0	0	0
TRAFFIC PURSUITS / STOPS	9	9	0	0	1	8	3	6	0	0	0	0	0
ALL OTHER	4	4	0	0	1	3	1	1	0	0	1	1	0
TOTALS	59	57	6	2	4	47	29	14	8	0	2	3	3

29

Nevada--Assaults with Injury/without Injury--UCR

September 2006

Agency	Total Assaults by weapon		Firearm		Cutting Instruments		Other Dangerous weapons		Hands, Fists, Feet, Etc.		
	With personal injury	Without personal injury	With personal injury	Without personal injury	With personal injury	Without personal injury	With personal injury	Without personal injury	With personal injury	Without personal injury	
Boulder City PD	0	0	0	0	0	0	0	0	0	0	
Carlin PD	0	0	0	0	0	0	0	0	0	0	
Carson City SO	1	0	1	0	0	0	0	0	0	1	
Churchill Co SO	3	0	3	0	0	0	0	0	0	3	
Clark Co Schl Dist PD	0	0	0	0	0	0	0	0	0	0	
Douglas Co SO	0	0	0	0	0	0	0	0	0	0	
Elko Co SO	0	0	0	0	0	0	0	0	0	0	
Elko PD	0	0	0	0	0	0	0	0	0	0	
Esmeralda Co SO	0	0	0	0	0	0	0	0	0	0	
Eureka Co SO	0	0	0	0	0	0	0	0	0	0	
Fallon PD	0	0	0	0	0	0	0	0	0	0	
Henderson PD	2	1	1	0	0	0	0	0	1	1	
NV Highway Patrol	5	0	5	0	0	0	0	0	0	5	
Humboldt Co SO	0	0	0	0	0	0	0	0	0	0	
Lander Co SO	0	0	0	0	0	0	0	0	0	0	
Las Vegas Metro PD	33	24	9	1	2	0	2	1	2	22	3
Lincoln Co SO	0	0	0	0	0	0	0	0	0	0	
Lovelock PD	0	0	0	0	0	0	0	0	0	0	
Lyon Co SO	0	0	0	0	0	0	0	0	0	0	
Mesquite PD	0	0	0	0	0	0	0	0	0	0	
Mineral Co SO	0	0	0	0	0	0	0	0	0	0	
NV Div Investigations	0	0	0	0	0	0	0	0	0	0	
North Las Vegas PD	5	1	4	0	0	0	0	1	1	3	
Nye Co SO	2	1	1	0	0	0	0	0	1	1	
Pershing Co SO	0	0	0	0	0	0	0	0	0	0	
Reno PD	5	2	3	0	0	0	0	0	2	3	
Sparks PD	2	0	2	0	0	0	0	0	0	2	
Storey Co SO	0	0	0	0	0	0	0	0	0	0	
Taxicab Authority	0	0	0	0	0	0	0	0	0	0	
TMCC PD	0	0	0	0	0	0	0	0	0	0	
UNLV PD	0	0	0	0	0	0	0	0	0	0	
UNR PD	0	0	0	0	0	0	0	0	0	0	
Washoe Co SO	0	0	0	0	0	0	0	0	0	0	
Washoe Co School Dist.	0	0	0	0	0	0	0	0	0	0	
West Wendover PD	0	0	0	0	0	0	0	0	0	0	
White Pine Co SO	1	1	0	0	0	0	0	0	1	0	
Winnemucca PD	0	0	0	0	0	0	0	0	0	0	
Yerington PD	0	0	0	0	0	0	0	0	0	0	
Totals	59	30	29	1	2	0	2	1	3	28	22

Nevada--Time of Assaults on Officers--UCR

September 2006

Agency	2:00 AM	4:00 AM	6:00 AM	8:00 AM	10:00 AM	12:00 AM	12:01-2:00 PM	2:00-4:00 PM	4:00-6:00 PM	6:00-8:00 PM	10:00 PM	10:00-12:00 PM
Boulder City PD	0	0	0	0	0	0	0	0	0	0	0	0
Carlin PD	0	0	0	0	0	0	0	0	0	0	0	0
Carson City SO	0	0	0	0	0	0	0	0	0	0	1	0
Churchill Co SO	0	0	0	0	0	0	0	0	0	0	0	3
Clark Co Schl Dist PD	0	0	0	0	0	0	0	0	0	0	0	0
Douglas Co SO	0	0	0	0	0	0	0	0	0	0	0	0
Elko Co SO	0	0	0	0	0	0	0	0	0	0	0	0
Elko PD	0	0	0	0	0	0	0	0	0	0	0	0
Esmeralda Co SO	0	0	0	0	0	0	0	0	0	0	0	0
Eureka Co SO	0	0	0	0	0	0	0	0	0	0	0	0
Fallon PD	0	0	0	0	0	0	0	0	0	0	0	0
Henderson PD	0	0	0	0	0	0	0	1	0	0	0	1
Highway Patrol	0	2	0	1	1	0	1	0	0	0	0	0
Humboldt Co SO	0	0	0	0	0	0	0	0	0	0	0	0
Lander Co SO	0	0	0	0	0	0	0	0	0	0	0	0
Las Vegas Metro PD	5	1	0	1	3	1	2	3	1	8	3	5
Lincoln Co SO	0	0	0	0	0	0	0	0	0	0	0	0
Lovelock PD	0	0	0	0	0	0	0	0	0	0	0	0
Lyon Co SO	0	0	0	0	0	0	0	0	0	0	0	0
Mesquite PD	0	0	0	0	0	0	0	0	0	0	0	0
Mineral Co SO	0	0	0	0	0	0	0	0	0	0	0	0
NV Div Investigations	0	0	0	0	0	0	0	0	0	0	0	0
North LV PD	1	0	0	1	0	0	0	0	0	0	0	3
Nye Co SO	0	0	0	0	0	0	0	0	0	1	1	0
Pershing Co SO	0	0	0	0	0	0	0	0	0	0	0	0
Reno PD	0	0	0	0	2	0	0	0	0	0	1	2
Sparks PD	1	0	0	0	0	0	0	0	0	0	0	1
Storey Co SO	0	0	0	0	0	0	0	0	0	0	0	0
Taxicab Authority	0	0	0	0	0	0	0	0	0	0	0	0
TMCC PD	0	0	0	0	0	0	0	0	0	0	0	0
UNLV PD	0	0	0	0	0	0	0	0	0	0	0	0
UNR PD	0	0	0	0	0	0	0	0	0	0	0	0
Washoe Co SO	0	0	0	0	0	0	0	0	0	0	0	0
Washoe Co Schl PD	0	0	0	0	0	0	0	0	0	0	0	0
West Wendover PD	0	0	0	0	0	0	0	0	0	0	0	0
White Pine Co SO	0	0	0	0	0	0	0	0	0	0	1	0
Winnemucca PD	0	0	0	0	0	0	0	0	0	0	0	0
Yerington PD	0	0	0	0	0	0	0	0	0	0	0	0
Totals	7	3	0	3	6	1	3	4	1	9	7	15

Nevada -- Division Of Investigations

Arrests for Narcotics Violations

September 2006

		10-	13-											23	25-	30-	35-	40-	45-	50-	55-	60-	>64	Total	W	B	A	I																		
		<10	12	14	15	16	17	18	19	20	21	22	24	29	34	39	44	49	54	59	64																									
SALES/MANUFACTURING VIOLATIONS																																														
Opium or cocaine and their derivatives (morphine, heroin, codeine)	M																					1			1																					
	F																								0																					
Marijuana	M									1					2	1					1						5																			
	F																										0						5													
Synthetic narcotics- Manufactured narcotics that can cause true drug addiction (demerol, meth)	M																					1																								
	F																																													
Other dangerous, non-narcotic, drugs (barbituates, benzderine)	M									1	1	1	1	2	4	1	1	3	1						15																					
	F														2	1	1																													
Sub-Total	M	0	0	0	0	0	0	0	1	1	1	1	2	6	2	1	1	3	2	1	0	0	22	0	0	0	0																			
	F	0	0	0	0	0	0	0	0	0	0	0	0	0	2	0	1	0	0	0	0	0	3	24	0	1	0																			
POSSESSION VIOLATIONS																																														
Opium or cocaine and their derivatives (morphine, heroin, codeine)	M																								0																					
	F																								0																					
Marijuana	M															1																														
	F																																													
Synthetic narcotics- Manufactured narcotics that can cause true drug addiction (demerol, meth)	M																								0																					
	F																								0																					
Other dangerous, non-narcotic, drugs (barbituates, benzderine)	M					1	1					1					1						4																							
	F											1	1					1						3	6	1																				
Sub-Total	M	0	0	0	1	1	0	0	0	0	0	1	0	1	1	0	0	0	0	0	0	0	5	0	0	0	0																			
	F	0	0	0	0	0	0	0	0	0	0	1	1	0	0	1	0	0	0	0	0	0	3	7	1	0	0																			
Total		0	0	0	1	1	0	0	1	1	1	1	4	7	5	2	3	3	2	1	0	0	33	31	1	1	0																			

AGE, RACE AND SEX OF PERSONS CHARGED

18 Years of Age and over

September 2006

CLASSIFICATION OF OFFENSES	SEX	18	19	20	21	22	23	24	25-29	30-34	35-39	40-44	45-49	50-54	55-59	60-64	over 65	Total Over 18	RACE				
																			White	Black	American Indian or Alaskan Native	Asian or Pacific Islander	
																			Murder and Nonnegligent Manslaughter	01a	Male	2	2
		Female		1		1												2	12	9	1		
Manslaughter by Negligence	01b	Male																0					
		Female																0					
Forcible Rape	02	Male					1		2	2	2	2					1	10					
		Female									2	2						2	7	4	1		
Robbery	03	Male	12	11	2	8	3	7	6	22	14	7	5	3	1	1		102					
		Female		1		2	1	1		6	2							13	62	50		3	
Aggravated Assault (Return A-4a-d)	04	Male	9	9	9	6	3	14	8	34	24	18	20	11	1	4	3	197					
		Female	2		1	1		2	1	5	6	4	1	5	2		1	31	172	48	3	5	
Burglary--Breaking or Entering	05	Male	11	9	6	11	5	5	2	25	11	9	5	6	5	2		112					
		Female	4		2	2	1	1	1	6	5	3	4	2	2	1		34	117	27	2		
Larceny--Theft (except Motor Vehicle Theft)	06	Male	23	22	19	21	14	8	10	67	49	59	48	52	30	13	2	6	443				
		Female	9	7	7	7	6	9	8	41	33	17	26	10	8	2		1	191	477	138	5	14
Motor Vehicle Theft	07	Male	6	8	4	3	5	5	4	29	22	11	6	8	3	1		115					
		Female		1		1			1	8	1	2	4					17	104	28			
Other Assaults (Return A-4e)	08	Male	24	40	43	41	34	45	49	194	162	153	122	85	77	18	15	13	1115				
		Female	5	12	14	14	18	11	18	76	59	44	47	33	12	8	1	1	373	1064	351	25	48
Arson	09	Male									1	3						4					
		Female																0	4				
Forgery & Counterfeiting	10	Male	1	1	2	1	2	3	4	3	5	6	5		1			34					
		Female		1	2	1	2				4	2	1	4				17	34	15		2	
Fraud	11	Male	5	1	5	2	5	12	6	29	25	33	20	18	14	3	1	1	180				
		Female	2	2	5	4	1	4	4	15	10	15	15	3	4	3	3	1	91	210	48	1	12
Embezzlement	12	Male	2		1	1				3	1	3	2	1				15					
		Female	2		2		2			3	3	1	1		3	1		18	21	8		4	
Stolen Property; Buying, Receiving, Possessing	13	Male	5	6	5	5	4	3	8	18	15	17	10	4	5			105					
		Female	3	2	1	3		1	1	5	5	6		1				28	106	24	1	2	
Vandalism	14	Male	13	9	8	7	3	6	3	9	9	8	9	8	2			94					
		Female		1	2	1		2			3	3	2	1	1			16	88	20	1	1	
Weapons; Carrying, Possessing, etc.	15	Male	13	13	8	9	5	6	11	30	21	10	9	14	7	2	1	4	163				
		Female					2			2	3	2			1			10	136	31	2	3	
Prostitution and Commercialized Vice	16	Male		1	1	2	10	1	5	18	17	9	14	9	5			92					
		Female	11	23	36	36	29	23	16	39	34	36	18	24	9	3		337	232	174	5	18	
Sex Offenses (except Forcible Rape and Prostitution)	17	Male	1	5	3	3	1		3	12	11	12	7	16	7	8	2	1	92				
		Female	1	1					1	1	4		3	3				14	83	15	2	6	
Drug Abuse Violations	18	Male	39	42	40	46	48	43	44	162	115	100	100	59	26	16	2	1	883				
Grand Total	180	Female	16	7	8	12	10	5	9	38	34	26	32	23	6	1	0	227	752	327	12	19	
(1) Sale/Manufacturing Subtotal	180	Male	5	7	10	14	15	7	8	37	26	17	17	6	2	4	0	0	175				
		Female	4	0	1	4	0	1	3	8	3	5	6	4	2	0	0	0	41	129	83	2	2
Opium or Cocaine and Their Derivatives (Morphine, Heroin, Codeine)	a	Male	1	3	6	2	2	4	3	19	8	9	8	2	1			68					
		Female	2		1	2			2	4		2	3		1			17	35	50			
Marijuana	b	Male	2	2	3	3	5	3	3	8	7	5	3	1	1	2		48					
		Female			2		1		3	1	2	1		1				11	26	30	2	1	
Synthetic Narcotics--Manufactured Narcotics Which Cause True Drug Addiction (Demerol, Methadone)	c	Male	2	2		3	7		1	4	4	1	4	2				31					
		Female	2								1		1	2				6	34	3			
Other Dangerous Non-Narcotic Drugs (Barbiturates, Benzadrine)	d	Male			1	6	1		1	6	7	2	2	1				28					
		Female						1	1	1	1	1	2					7	34			1	

AGE, SEX, AND RACE OF PERSONS CHARGED

September 2006

18 Years of age and under

(Count all Offences even if the Arrest is based on only one charge)

CLASSIFICATION OF OFFENSES	SEX	AGE							Total Under 18	RACE				
		Under 10	10-12	13-14	15	16	17	18		White	Black	American Indian or Alaskan Native	Asian or Pacific Islander	
Murder and Nonnegligent Manslaughter	01a	Male							0					
		Female							0					
Manslaughter by Negligence	01b	Male							0					
		Female							0					
Forcible Rape	02	Male						1	1					
		Female							0	1				
Robbery	03	Male		1	5	3	4	5	18					
		Female						1	1	5	12	2		
Aggravated Assault (Return A-4a-d)	04	Male	2	3	6	1	4	6	22					
		Female					3		3	17	7			1
Burglary--Breaking or Entering	05	Male		2	6	4	5	15	32					
		Female			1		1		2	21	11	1		1
Larceny--Theft (except Motor Vehicle Theft)	06	Male	2	5	25	21	21	21	95					
		Female	1	6	7	10	18	17	59	115	28	2		9
Motor Vehicle Theft	07	Male			1	7		7	15					
		Female				1		1	2	11	4	1		1
Other Assaults (Return A-4e)	08	Male	3	13	31	16	23	19	105					
		Female	2	4	25	18	14	9	72	134	39	3		1
Arson	09	Male	1	10	16	8	7	4	46					
		Female	1		7	3	2	1	14	40	18			2
Forgery & Counterfeiting	10	Male							0					
		Female							0					
Fraud	11	Male				1	2		3					
		Female						5	5	6	1			1
Embezzlement	12	Male							5					
		Female							0	2	2			1
Stolen Property; Buying, Receiving, Possessing	13	Male			2	3		4	9					
		Female					4	2	6	10	5			
Vandalism	14	Male	1	4	18	14	5	8	50					
		Female		4	1		2	2	9	51	6	1		1
Weapons; Carrying, Possessing, etc.	15	Male	3	4	8	11	16	13	55					
		Female			1	2	1		4	48	10	1		
Prostitution and Commercialized Vice	16	Male							0					
		Female							0					
Sex Offenses (except Forcible Rape and Prostitution)	17	Male		1	2	1	2	1	7					
		Female				1			1	6	2			
Drug Abuse Violations		Male	1	0	19	23	31	27	101					
Grand Total	18	Female	0	1	4	2	6	6	19	95	19	1		5
(1) Sale/Manufacturing Subtotal	180	Male	0	0	1	2	5	2	10					
		Female	0	0	0	2	0	0	2	10	2	0		0
Opium or Cocaine and Their Derivatives (Morphine, Heroin, Codeine)	a	Male							0					
		Female							0					
Marijuana	b	Male			1		4	1	6					
		Female				1			1	5	2			
Synthetic Narcotics-Manufactured Narc Cause True Drug Addiction (Der	c	Male				1			1					
		Female				1			1	2				
Other Dangerous Non-Narcotic Drugs (Barbiturates, Benzadrine	d	Male				1	1	1	3					
		Female							0	3				
(2) Possession - Subtotal	185	Male	1	0	18	21	26	25	91					
		Female	0	1	4	0	6	6	17	85	17	1		5
Opium or Cocaine and Their Derivatives (Morphine, Heroin, Codeine)	e	Male				1	2		3					
		Female							0	1	1			1
Marijuana	f	Male	1		16	18	19	22	76					
		Female		1	2		6	4	13	68	16	1		4
Synthetic Narcotics-Manufactured Narc Cause True Drug Addiction (Der	g	Male			1	1	1	2	5					
		Female			1			1	2	7				
Other Dangerous Non-Narcotic Drugs (Barbiturates, Benzadrine	h	Male			1	1	4	1	7					
		Female			1			1	2	9				

CLASSIFICATION OF OFFENSES													
	SEX												
	Male	0	0	0	0	0	0	0	0				
Gambling Total	19	Female	0	0	0	0	0	0	0	0	0	0	0
Bookmaking (Horses and Sports Book)	a	Male							0				
		Female							0				
Numbers and Lottery	b	Male							0				
		Female							0				
All Other Gambling	c	Male							0				
		Female							0				
Offenses Against Family and Children	20	Male		2		2			4				
		Female				1		1	2	4	2		
Driving Under the Influence	21	Male					1	4	5				
		Female					1		1	6			
Liquor Laws	22	Male			9	16	24	42	91				
		Female			5	3	10	13	31	112	5	3	2
Drunkenness	23	Male			1	1		2	4				
		Female			1	1	1	1	4	7		1	
Disorderly Conduct	24	Male	1	5	25	17	11	5	64				
		Female		5	22	5	7	3	42	57	47		2
Vagrancy	25	Male					1		1				
		Female							0	1			
All Other Offenses (except Traffic) Total	26	Male	2	14	38	54	48	44	200				
		Female	2	2	11	19	18	18	70	229	35	3	2
Suspicion	27	Male					1		1				
		Female			3				3	4			
Curfew and Loitering Law Violati	28	Male		8	20	19	39	61	147	1			
		Female		1	20	25	32	27	105	197	35	4	15
Runaway	29	Male		4	8	10	11	8	41				
		Female	1	2	22	17	25	13	80	108	10	2	1
GRAND TOTAL			23	101	370	340	401	422	1657	1288	298	25	45

Department of Motor Vehicles and Public Safety
808 West Nye Lane
Carson City NV 89703

Uniform Crime Reporting

Date

Disposition of Juveniles

TOTAL

1. Handled within Department and released.
2. Referred to Juvenile court.
3. Referred to welfare agency.
4. Released to other police agency.
5. Referred to criminal or adult court.

Nevada UCR
*Footnotes / Exceptions

September 2006

Table 1

--Nevada figures are annualized projections.

--"Assault" does not include simple assaults to allow direct comparison between the Nevada rate and the National rate for this Index offense. See Table 8 for a count of all assaults.

Table 2

--The LV Fire Department reports "Arson" offenses for the City of Las Vegas. The population figure for this agency represents jurisdiction and is not added to the county total. Similarly, the School District Police Departments in Clark and Washoe Counties are not added to county population estimates as they represent persons served (student enrollment plus staff.)

--Assault data in this table includes ALL assaults (aggravated and simple) reported for the current month.

--County crime rates are calculated following subtraction of populations of jurisdictions failing to report.

Table 3

-- In the "Nevada vs National Index Crime and Clearance Rates" sections, the "Assaults" numbers do not include simple assaults following FBI guidelines. Therefore, they may be compared directly to National rates.

-- National crime rate figures are the latest available for comparative use (2005). Nevada figures are annualized projections.

Table 13

--At various times, property values recovered will exceed values stolen for the current reporting period.

General Notes:

- The following agency was unable to submit reports for this month:

Pershing County Sheriff

-- Any late reports not submitted in time for this publication will be incorporated in to the year-to-date totals in subsequent reports.